

Biotic and abiotic factors affecting distributions of megafauna in diffuse flow on andesite and basalt along the Eastern Lau Spreading Center, Tonga

Elizabeth L. Podowski¹, Shufen Ma^{3,4}, George W. Luther III³, Denice Wardrop², Charles R. Fisher^{1,*}

¹Biology Department and ²Geography Department, Pennsylvania State University, University Park, Pennsylvania 16802, USA
³College of Marine and Earth Studies, University of Delaware, Lewes, Delaware 19958, USA

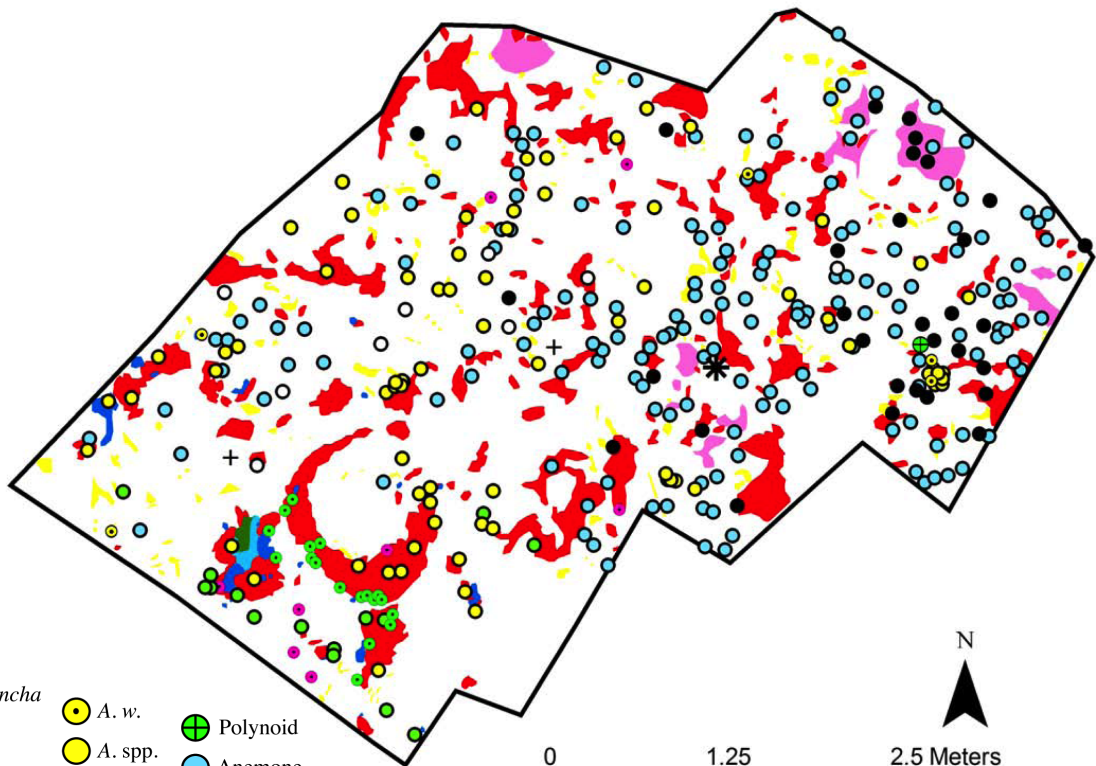
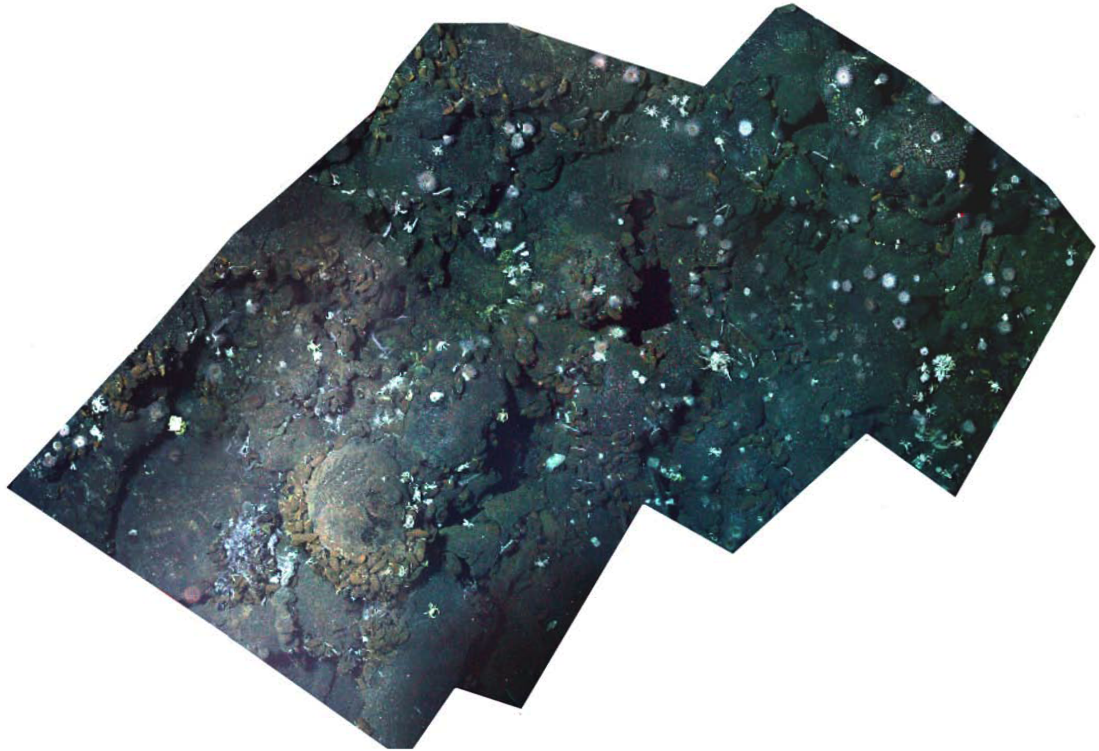
⁴Present address: Department of Earth and Planetary Sciences, University of California, Berkeley, California 94720, USA



















*Email: cfisher@psu.edu

Marine Ecology Progress Series 418:25–45 (2010)

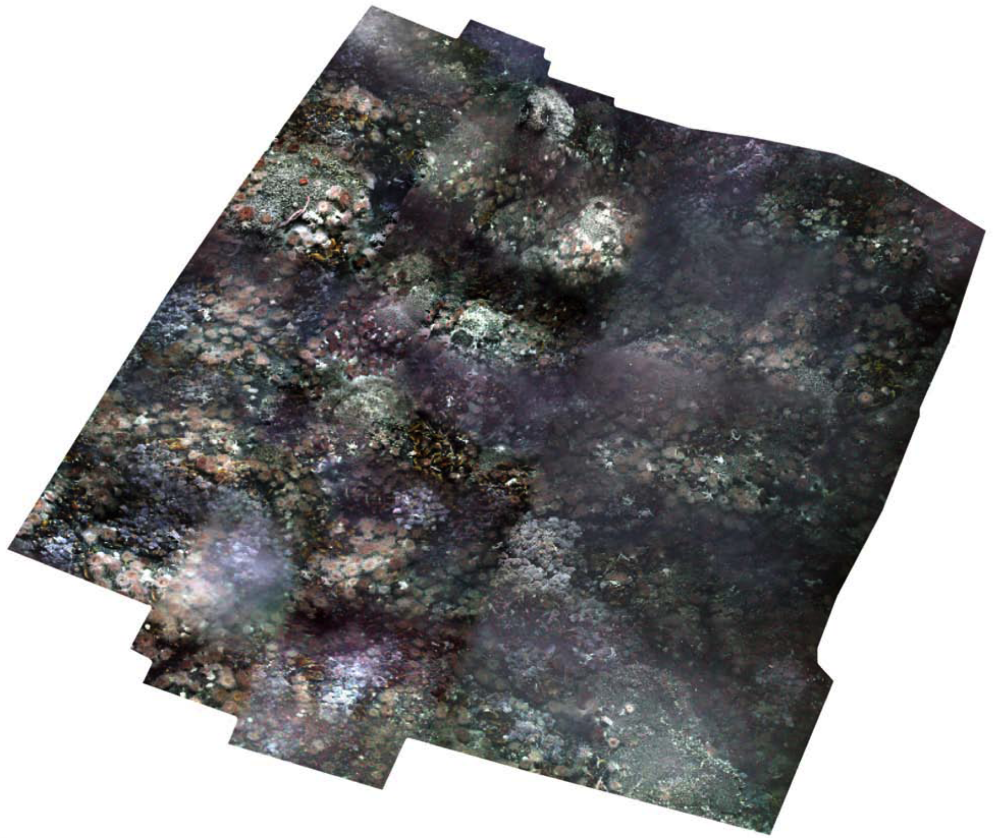
Supplement. Mosaics and digitized faunal distributions for assessment sites, KM1, TC1, TC2, ABE1, ABE 2 and TM1 (for KM2 see Fig. 2). Aggregated fauna: *I. n.*: *Ifremeria nautili*, *B. b.*: *Bathymodiolus brevior*, WH: white, DK: dark, WHDK: white-dark mix. Solitary faunal species: *T. m.*: *Thermobiotes mytilogeiton*, *T. sp.*: *Thermarces* sp., *C. h.*: *Chiridota hydrothermica*, *A. spp.*: *Austinograea* spp., *A. a.*: *Austinograea alayseae*, *A. w.*: *Austinograea williamsi*, *M. l.*: *Munidopsis lauensis*, *P. h.*: *Paralomis hirtella*, *A.k.*: *Alvinocaris komaii*, Os: 'other' shrimp, *E. d.*: *Eosipho desbruyeresi*

KM1



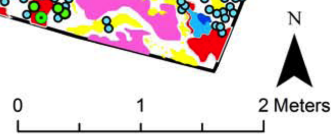
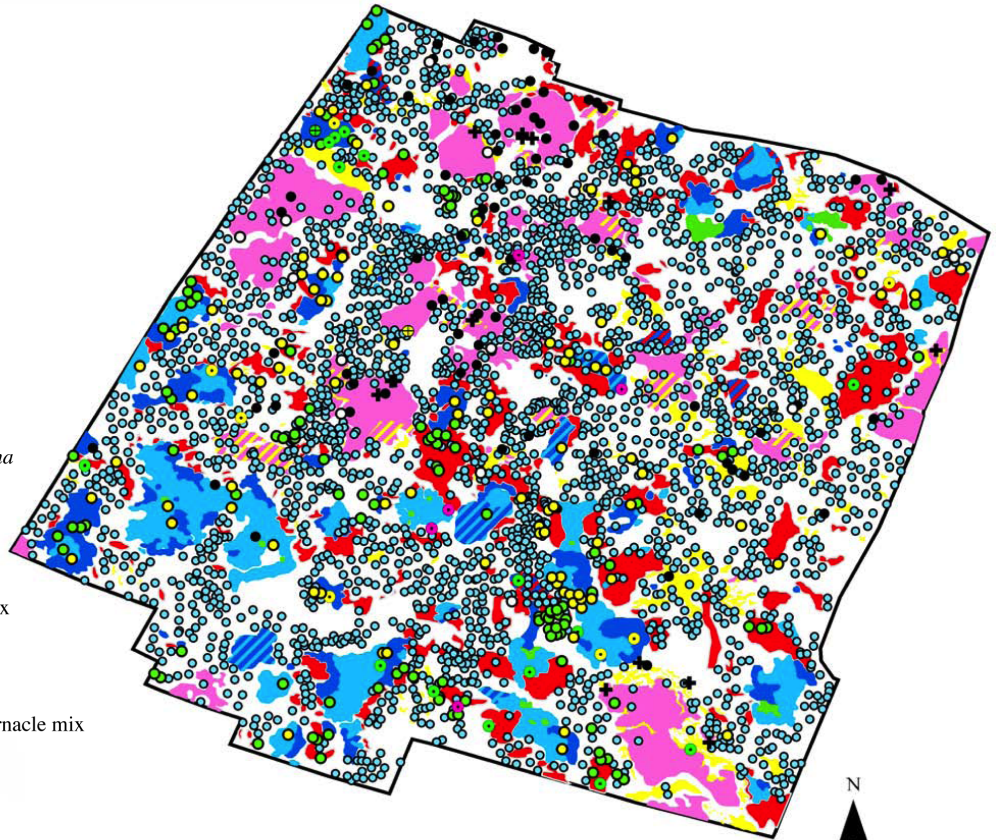
- | | | |
|---|--|---|
|  DK <i>Alviniconcha</i> |  <i>A. w.</i> |  Polynoid |
|  <i>I. n.</i> |  <i>A. spp.</i> |  Anemone |
|  WH <i>I. n.</i> |  <i>M. l.</i> |  <i>C. h.</i> |
|  <i>I. n.</i> & <i>B. b.</i> mix |  <i>P. h.</i> |  <i>T. sp.</i> |
|  <i>B. b.</i> |  <i>A. k.</i> | |
|  Zoanthids |  Os | |
|  Barnacles |  <i>E. d.</i> | |

TC1

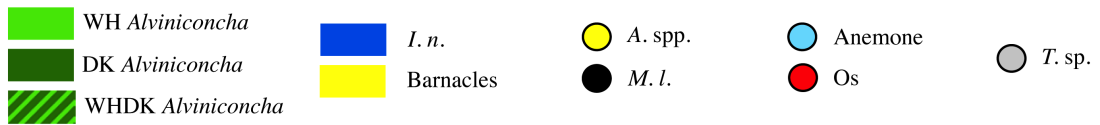
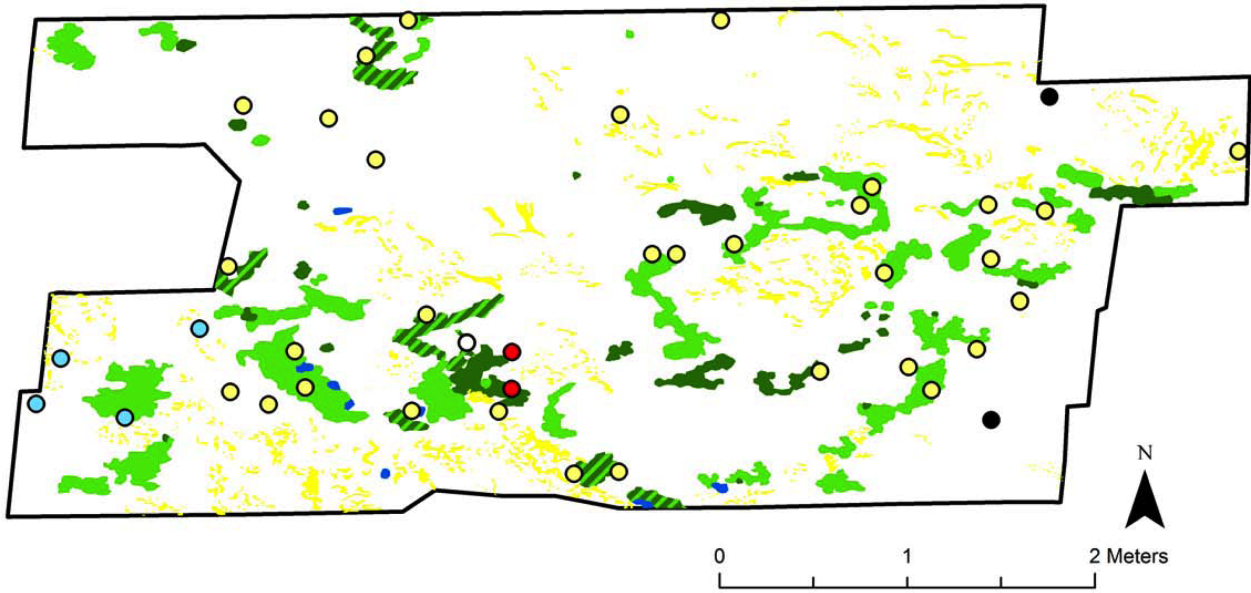


- ⊕ *A. a.*
- *A. w.*
- *A. spp.*
- *M. l.*
- *A. k.*
- Os
- ⊕ Sb
- *E. d.*
- ⊕ Polynoid
- Anemone
- *C. h.*

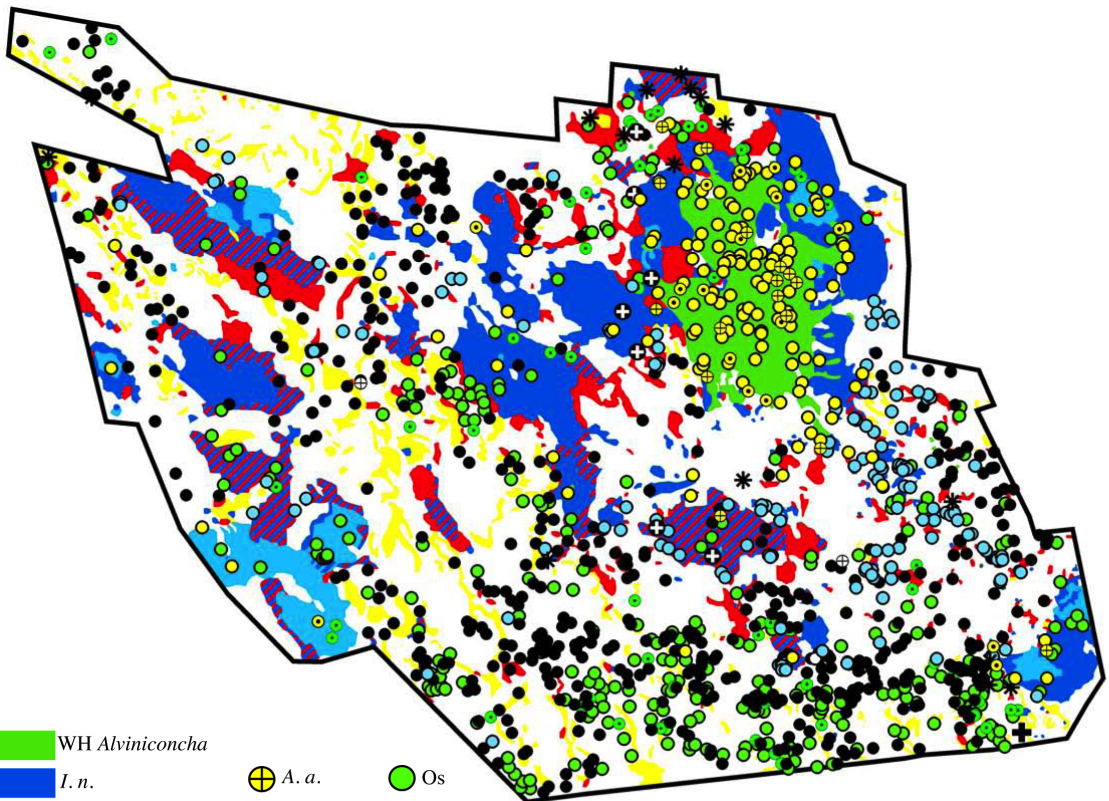
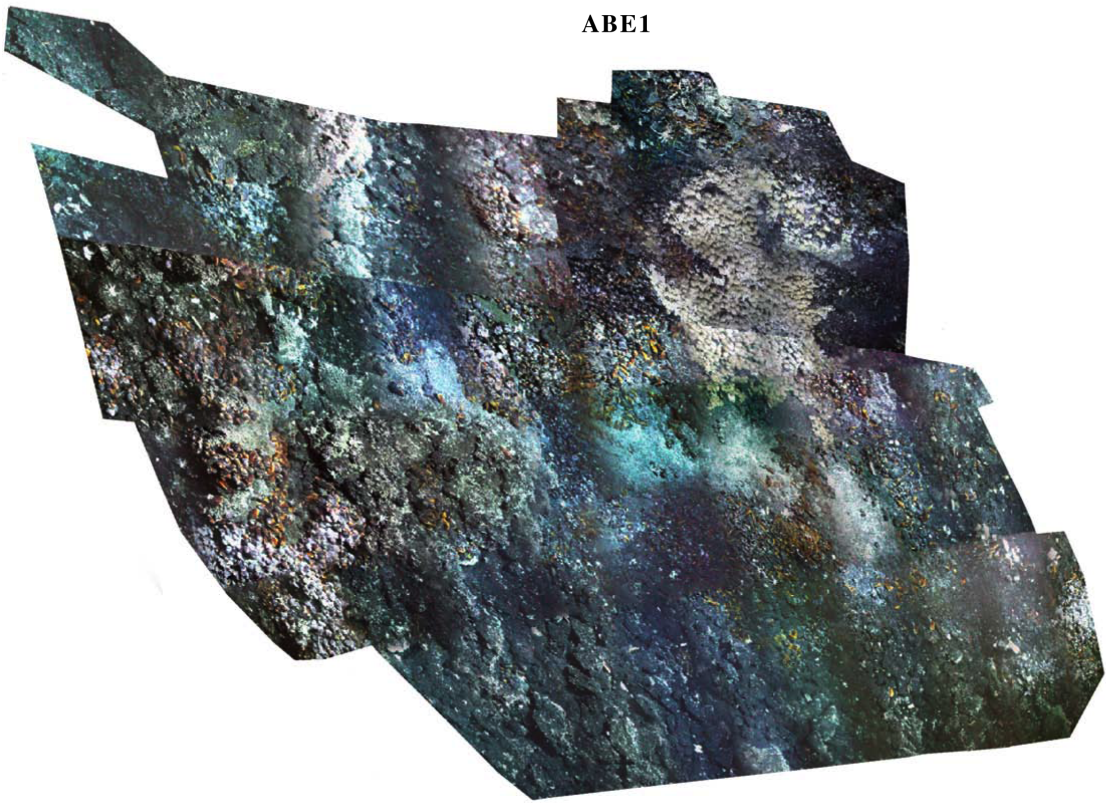
- WH *Alviniconcha*
- *I. n.*
- WH *I. n.*
- WHDK *I. n.*
- *I. n.* & *B. b.* mix
- *B. b.*
- Zoanths
- Zoantheid & barnacle mix
- Barnacles



TC2



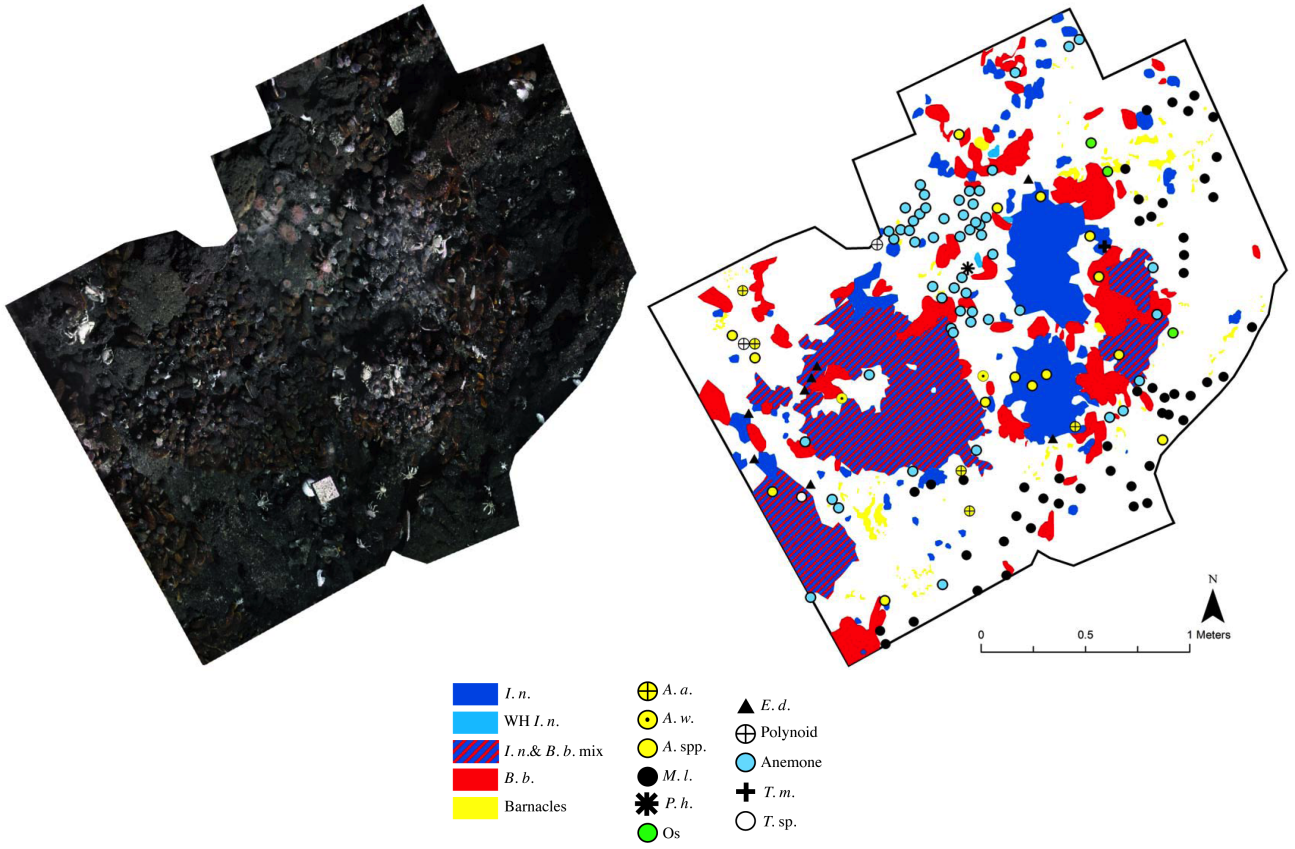
ABE1



- | | | |
|---------------------------------|----------------|---------------|
| WH <i>Alviniconcha</i> | <i>A. a.</i> | <i>Os</i> |
| <i>I. n.</i> | <i>A. w.</i> | <i>E. d.</i> |
| WH <i>I. n.</i> | <i>A. spp.</i> | <i>P. sp.</i> |
| WHDK <i>I. n.</i> mix | <i>M. l.</i> | Polynoid |
| <i>I. n.</i> & <i>B. b.</i> mix | <i>P. h.</i> | <i>T. m.</i> |
| <i>B. b.</i> | <i>A. k.</i> | <i>T. sp.</i> |
| Barnacles | | |



ABE2



TM1

