

The following supplement accompanies the article

Reproductive biology, embryo and early larval morphology, and development rates of krill (*Euphausia lamelligera* and *Euphausia distinguenda*), endemic to the Eastern Tropical Pacific

Israel Ambriz-Arreola*, Jaime Gómez-Gutiérrez, María del Carmen Franco-Gordo, Eva R. Kozak

*Corresponding author: rayamaris@gmail.com

Sexuality and Early Development in Aquatic Organisms 1:143–161 (2015)

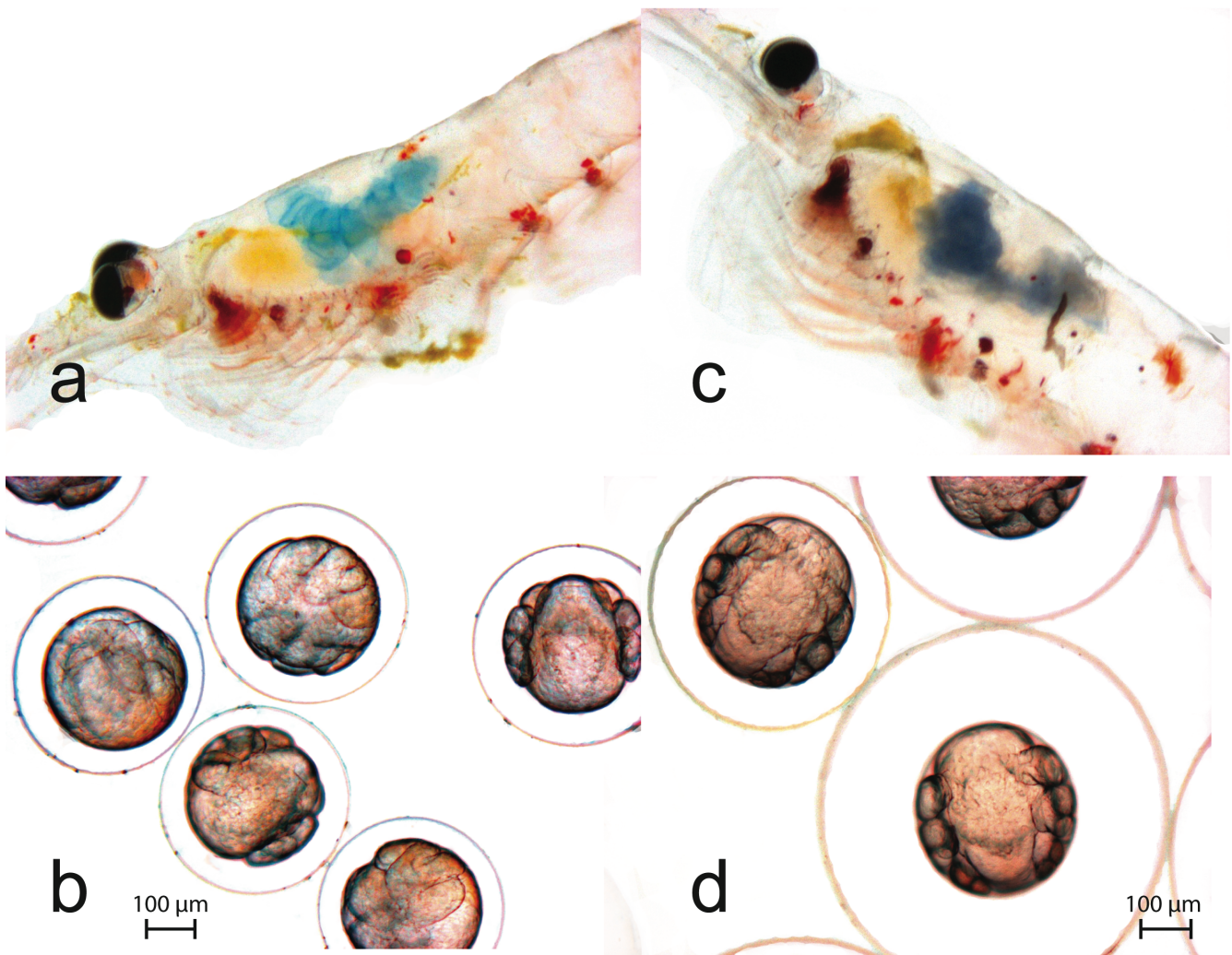


Figure S1. Blue colored gonad of gravid females and intraspecific variability (of the same brood) on chorion and embryo diameters, and perivitelline space of a, b) *Euphausia lamelligera* and c, d) *Euphausia distinguenda*

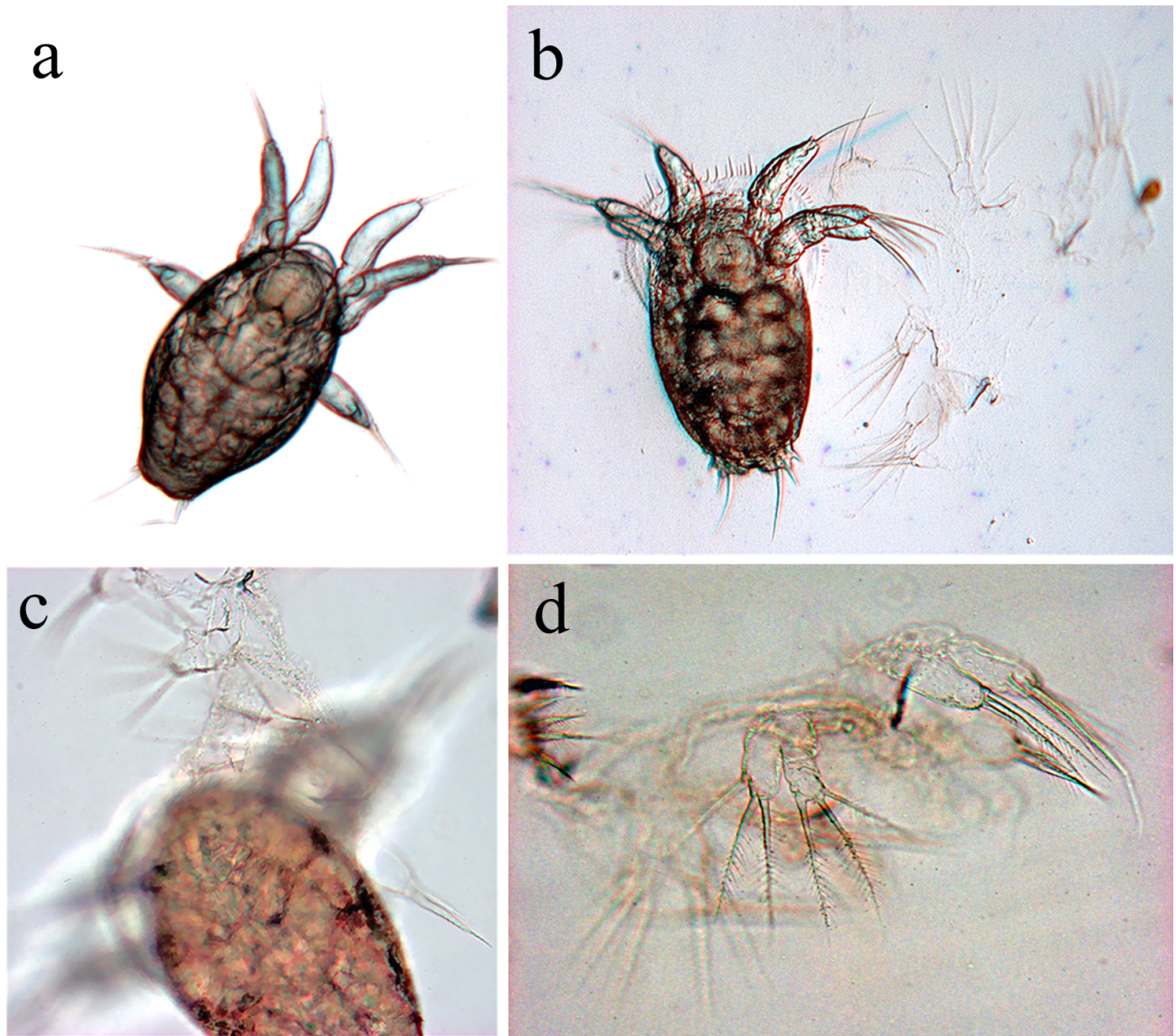


Figure S2. Digital photographs showing the molting process from pseudometanauplius (PMN) to metanauplius (MN) larval stages of *Euphausia lamelligera*. **a**) PMN stage in intermolt period (resting phase) just before molting process, **b**, **c**) MN stage during molting process, and **d**) discarded exuviae after molting process