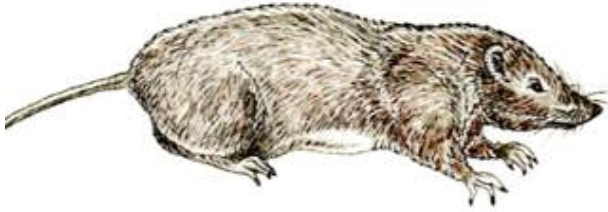


Iowa Range

northern third of Iowa

Bibliography

Iowa Department of Natural Resources. 2001.
Biodiversity of Iowa: Aquatic Habitats CD-ROM.



pygmy shrew

Sorex hoyi

Kingdom: Animalia
Division/Phylum: Chordata - vertebrates
Class: Mammalia
Order: Insectivora
Family: Soricidae

Features

The adult pygmy shrew is three to 3 1/2 inches long, including the tail. It has a black-brown body, tiny black eyes, and a long, pointed nose. The belly is a lighter shade than the back.

Natural History

The pygmy shrew lives in woods and adjacent grassy areas. It requires fallen or rotting logs or forest floor litter to be a part of the habitat. It eats insect larvae, spiders, beetles, and ants. It is active year round. It releases a musky odor when disturbed. It is the smallest mammal by weight. It is believed that this shrew produces more than one litter per year.

Habitats

bottomland forests

Iowa Status

uncommon; native