



Spring 2017 Free Events

Free of charge. Some programs may have nominal fees for non-members.

Plant Shop Opening

Thursday, April 13, 9am – 4pm daily



Houseplant Revival & Repotting Workshop

Tuesday, April 11, 1 – 3pm

Delaware Valley Regional Daffodil Show

Saturday, April 15, 1:30pm – 4pm
Sunday, April 16, 9am – 3:30pm

Easter Sunrise Service

Sunday, April 16, 6:30am

Tree Discovery Walk

Sunday, April 23, 2pm

Free Events continued on page 4

Forever Jenkins Endowment Campaign

Endow An Acre – Take A Stake

The Arboretum has successfully grown a modest initial endowment of \$250,000 to approximately \$12.5 million today, which is 63% of our goal to raise \$20 million by 2020! The endowment is currently funding less than half of the Arboretum's operating budget. Since the Arboretum does not charge admission, it must rely on private donations for most of the balance of its operating budget. We need everyone's help to grow the green all the way to the pond and beyond!

Please consider joining others in endowing an acre, helping to grow the green, and preserving the Jenkins Miracle for generations to come! Call Janet Bauman at 610-647-8870 X152 to find out the many ways that you could become an important part of our miracle.

Growing Deeper Roots to Assure Perennial Growth

Why do we need to grow our endowment? The Arboretum's fundamental challenge is to expand its endowment in order to sustainably secure the

continued on page 10

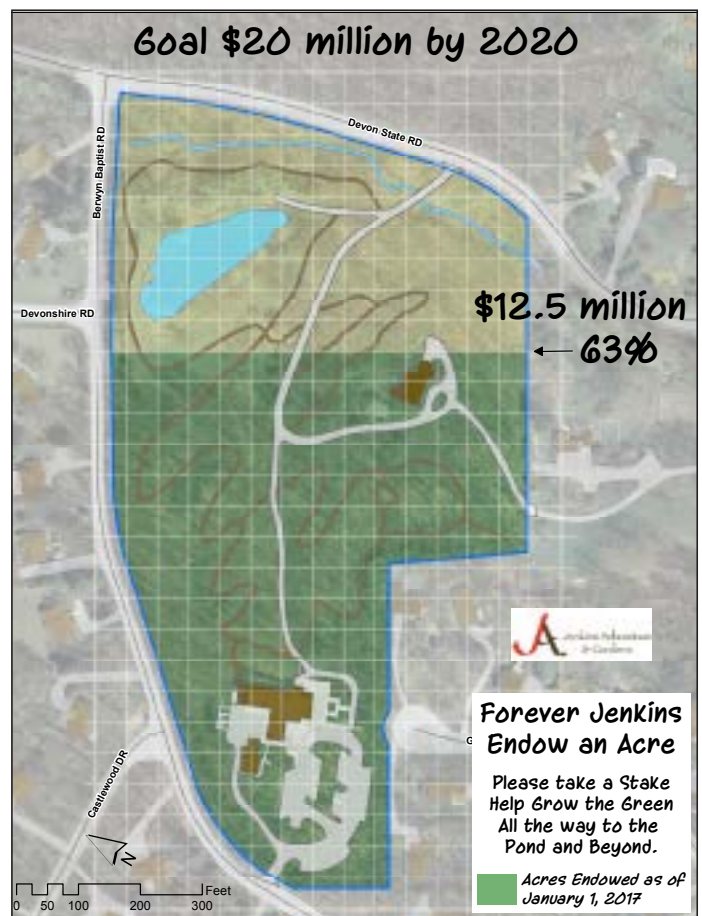


Table of Contents

Spring 2017 Free Events	1
Letter from the Executive Director	3
Support Jenkins and Leave a Legacy	5
Educational Programs	
Plant Shop Opening	6
Houseplant Revival and Repotting Workshop	6
Annual Delaware Valley Regional Daffodil Show	6
Easter Sunrise Service	6
Tree Discovery Walk	7
Vintage & Weird Gardening Tools	7
VFARS Annual Public Plant Sale	7
VFARS Rhododendron and Azalea Flower Show	8
Delaware Valley Iris Society Events	8
Delaware Valley Daylily Society Public Plant Sale & Auction	8
News	
Forever Jenkins Endowment Campaign	1
2016 Green Ribbon Native Plants®	9
The Big Picture: Long Range Planning	10
Special Behind The Scenes Golf Cart Tours for Members	11
Eagle Scout Partnerships	11
Preserving Plant Genetics - A Collaborative Effort	12
A Walk in the Woods	12
Membership & Gifts in 2016	14
2016 Annual Report	19
Save the Date: Spring Blooms, June 3, 2017	20

Board of Directors

Perc Moser
President

Edmond Morse
Vice-President

Cole Vastine
Treasurer

Marjorie Epps Kennedy
Secretary

Harold E. Sweetman, Ph.D.
Executive Director

Katherine Bennett
Diana M. Calligan
Peter H. Cordray
John W. Fischer
Sharon Harris
Howard Holden

Rev. Dr. George Hollingshead
Gretchen Kiernan
Susan LeBoutillier
Jack Linvill
Ted Patterson
Angela M. Scully
Lisa Boehne Tobias
Roger M. Whiteman, Esq.
Sally Wood

Frederick C. Fletcher II, Esq.
Emeritus

Marilyn O. Sifford
Emerita

Margaret H. Wolcott
Emerita

John Otto Haas
Honorary



Please make sure we have your current email for notification of special member events. If you unsubscribed, contact Janice to find out how to re-subscribe: janice@jenkinsarboretum.org

Contributions to this newsletter were made by:

Writers: Dr. Harold Sweetman, Janet Bauman, Summer Sugg, Steve Wright

Editors: Janet Bauman & Janice Legg

© Copyright 2017, Jenkins Arboretum & Gardens

Design: Howell Partners LLC

From the Executive Director



Dear Members and Jenkins Friends,

Jenkins Arboretum & Gardens recently finished celebrating the 40th anniversary milestone. We are now looking ahead to the next several decades with strategic and long-range planning. The Board of Directors, staff and volunteers have been actively engaged in thoughtful retreats, sharing many successes and exciting ideas for the future. We invite you later in this newsletter to share your thoughts with us by responding to two questions:

What do you love about Jenkins and want to remain unchanged?

What changes would you want to see at Jenkins?

Jenkins will always have the gardens as its primary focus. The annual Green Ribbon Native Plant® awards announced in this newsletter are highly recommended for planting in home gardens. The rich diversity of plants in the gardens at Jenkins, nurtured through the horticultural labors of dedicated staff and volunteers, allow rich and varied visitor experiences. Open 365 days a year, Jenkins is welcoming and truly “Gardens for All Seasons.” While botanicals receive much attention, it is also important to note that it is people who energize a public garden when they come to events to learn and share their special knowledge. This energy is amplified many times by the various organizations who partner with Jenkins. Too many to list here, many appear throughout this newsletter as community organizations, plant societies, garden clubs and businesses.

Congratulations and thank you to all who support the Forever Jenkins Endowment Campaign- Endow an Acre. With your help, we are now nearly two-thirds of the way to our goal of establishing a permanent endowment. The Arboretum is honored that you, our friends and supporters, consider its mission a priority and a vital part of the community. Jenkins Arboretum & Gardens is truly beginning to flourish from its modest beginnings thanks to its loyal supporters, such as our “True Green” members of 5, 10, 15, and 20 or more years.

Ongoing support is vital to the Arboretum’s success. With your continued help through special gifts and bequests, we can grow the endowment to \$20 million in the next few years. The Jenkins Arboretum Legacy Society is also a great opportunity to leave a legacy and worthy of consideration in estate planning.

We invite you to come visit the gardens as often as you can, bring your family and friends and share in the special intimacy of being in this lovely, natural, and tranquil setting.

On behalf of the Board of Directors, staff, and volunteers, I wish to express a sincere thank you for your dedicated past support of the Arboretum and I look forward to your continued partnership in the future.

Very truly yours,



Harold E. Sweetman, Ph.D.

Executive Director



Spring 2017 Free Events

Vintage & Weird Gardening Tools

Tuesday, April 25, 7pm

Valley Forge Chapter of the American Rhododendron Society Annual Public Plant Sale

Saturday, May 6, 9am - 3pm

Sunday, May 7, 11am - 3pm

For information on the Opening Night Party see page 7.

Rhododendron & Azalea Flower Show Valley Forge & Greater Philadelphia Chapters of the American Rhododendron Society

Sunday, May 14, 1-5pm

Delaware Valley Iris Society Iris Flower Show

Sunday, May 21, 12 Noon – 4pm

Delaware Valley Iris Society Japanese Iris Flower Show

Saturday, June 17, 12 Noon – 4pm

Delaware Valley Iris Society Public Plant Sale

Saturday, July 15, 10am - 1pm

Delaware Valley Daylily Society Annual Public Plant Sale & Auction

Saturday, August 26, 9am –Noon,
Auction: 1-2pm

Jenkins Arboretum & Gardens Staff

Harold Sweetman
Executive Director

Janet Bauman
Director of Development

Janice Legg
Arboretum Administrator

Steven Wright
Director of Horticulture
Curator of Plant Collections

Maggie Knapp
Head Horticulturist

Summer Sugg
Hamilton Educational Fellow

John Cassels
Hamilton Educational Fellow

Nancy Cosmos
Digital Mapping Assistant

Helen Standen
Greenhouse and Nursery Manager

Lisa Boehne Tobias, *Receptionist*
Sharon Torello, *Receptionist*

Connie Vegso, *Receptionist*
Heather Fitzgerald, *Receptionist*



www.facebook.com/pages/Jenkins-Arboretum/137756889585122

Jenkins Arboretum & Gardens Volunteers

Stacy Antoniadis
Katherine Bennett

Dee Bilotta
Nancy Cosmos

Alice Doering
Heather Fitzgerald

Chris Frederick
Judi Garst

Leonard Gottesman
John Otto Haas

Ruth Hathaway
Michele Hawk

Mary Ellen & Tom Heisey
Elaine Hershman

George Hollingshead
Nancy & Rick Holmes

Sally L. Kerns
Gretchen Kiernan

Carol Klauss
Douglas Klieger

Cheryl Leibold
Linda Lipschutz

Linda Mason
Hope Marshall

Jeri Deyo McCue
Nicole Michaud

Charlene Millheim
Frances Pane

Leila Peck
Doris Petty

Tracy Rogusky
Arthur Silverberg

Loretta Spadafora
Helen Standen

Dede Strumpf
Mindy Taylor

Fulvio & Milena Trosini
Vicky Todd

Regina Wagner
Bonnie Witmer

Sally Wood

Our Mission Statement

Jenkins' mission is to preserve natural tranquil woodlands for community enjoyment, to showcase native plants and a world class collection of rhododendrons and azaleas, and to promote environmental horticulture through learning, research and conservation.

The Vision of H. Lawrence Jenkins

As defined by the will of H. Lawrence Jenkins, Jenkins Arboretum is to be developed as a public park, arboretum and wildlife sanctuary for the use of the public and responsible organizations engaged in the study of arboriculture, horticulture and wildlife, for educational and scientific purposes.

Support Jenkins and Leave a Legacy

The Jenkins Arboretum Legacy Society membership offers each committed donor the opportunity to be recognized and appreciated for philanthropy during his/her lifetime. It is a gift that keeps on giving and generations to come will be the beneficiaries of the vision and generosity of Legacy Society members. We urge you as members of Jenkins Arboretum & Gardens, who have enjoyed its serenity and beauty over the years, to think about the value of a long term gift to assure the future of the Arboretum. The Jenkins Arboretum Legacy Society offers you the vehicle to make this happen. Please consider joining.



What will your legacy be?

Founding Members

Mr. H. Lawrence Jenkins*
Kathleen Coll*
Louisa P. Browning*

Endowment Named Funds

Margaret Fawcett Fund
Fund In honor of Barbara & Hans Handschuh
Barbara Edsall Ludwig Fund
Dorrance H. Hamilton Educational Fellowship Fund
Winifred Alcorn Fund
Patricia J. Boehne, Ph.D. Fund
H. Lawrence Jenkins Fund
Kathleen Coll Fund
Wenner and Cynthia Smith Fund
Bill and Jane Denk Fund
Gayla McCluskey and David Humphrey Fund
Fund in memory of Ruth W. Williams*

Legacy Members

Cheryl Avery
David Alcorn
Dr. Barbara Bates*
Katherine & Pete Bennett
Edward G. Boehne
Patricia J. Boehne, Ph.D.*
Frank Brouse
Ruth G. Butterfield*
Aldys Davis
Jane Denk* and William Denk*
Marilyn H. Falls*
Margaret Fawcett*
Nancy & John Fischer
Ann & Charles Fletcher
Janet F. & John Otto Haas
Judith Hamblen
Dorrance H. Hamilton
Phil & Karla Herr
Roberta & George Hollingshead
Dorothy E. Hons*
Bitsy Hood* & Louis Hood*
Myrna Jakobowski
Barbara E. Ludwig*

Dr. Evamarie Malsch
Gayla McCluskey & Robert Humphrey
Charlene & Frank Millheim
Victoria Mowrer
Monika & Tim Panger
Leila & Bob Peck
Libby Pethick*
Mr. & Mrs. John N. Reardon
Noma Ann Roberts
Marilyn O. Sifford & Robert J. Butera
Marta Simons* & Bruce M. Simons
Christine & Robert Smetana
Ellie & Brad Smith
Wenner Smith* & Cynthia Smith*
Christine & Harold Sweetman
Lisa & Andrew Tobias
Milena & Fulvio Trosini
Nancy Tuleikis*
M.J. & Roger Whiteman
Peggy Wolcott
*Deceased

The Board of Directors has approved named funds in endowment with a minimum gift of \$25,000. Named funds will be documented in the Annual Report each year. Anyone can contribute any amount to an already established named fund.

Spring 2017 Educational Programs & Events

The spring line-up features a selection of classes, workshops, and lectures that will help you learn about horticulture, sustainable gardening and more. There are lots of practical ideas you can take home and implement in your own garden. Take a look at the offerings and sign up today! **Please call or visit our website for a registration form.**

Plant Shop Opening

Thursday, April 13, 9am – 4pm daily

Houseplant Revival and Repotting Workshop

April 11, 1-3 pm

Hands-on workshop led by Arboretum horticulture staff and greenhouse volunteers



Back by popular demand, the Arboretum's staff and volunteers are once again offering this workshop to help give new life to some of your dusty old houseplants. We can prune, clean, and re-pot with fresh soil mix (yes, we can do orchids). We can even give them a shot of fertilizer to get them going. The Arboretum will supply the soil,

fertilizer, and expertise, but we ask that participants bring their own containers. So bring your houseplants to the Arboretum for a spring pick-me-up.

Note: In most cases, the containers the plants are currently in will work fine, but if they need to be bumped into a larger container, you will need to supply that container.

\$5 per repot (members receive one free repot). No pre-registration required.

Annual Delaware Valley Regional Daffodil Show

Saturday, April 15, 1:30 - 4 pm

Sunday, April 16, 9 am - 4 pm

Presented by the Delaware Valley Daffodil Society
The Annual Delaware Valley Regional Daffodil Show, approved by The American Daffodil Society, will be held on Saturday, April 15

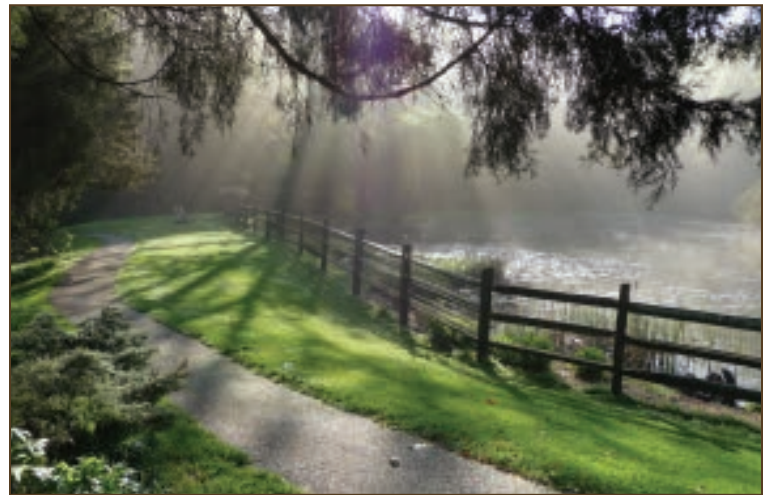


& Sunday, April 16, in the Sweetman Lecture Room in the John J. Willaman Education Center. If you love springtime

and daffodils, this is an opportunity to see many cultivars available in the marketplace, learn more about the 13 different daffodil divisions, daffodil culture, resistance to pests in the garden, naturalizing, landscape planting, and what constitutes a good garden flower or an excellent show flower. There will be an educational exhibit to further expand your knowledge. Members of DVDS will be available to help answer any questions you may have about growing daffodils.

For more information, visit The American Daffodil Society on the web at www.daffodilusa.org.

Free of charge. All are welcome. No pre-registration required.



Easter Sunrise Service

Sunday, April 16, 6:30 am

Led by Trinity Presbyterian Church, Berwyn, PA

Trinity Presbyterian welcomes all to celebrate Easter morning, rain or shine, surrounded by the beauty of nature at Jenkins Arboretum & Gardens. Sunrise service will begin at 6:30 am on the hillside above the pond. Bring comfortable shoes and something to sit on. In the event of rain, the service will be indoors, looking out over the tree canopy deck into the gardens. Refreshments will be served in the John J. Willaman Education Center following the service.

Free of charge. All are welcome. No pre-registration required.

Tree Discovery Walk

Sunday, April 23, 2:00pm

Led by Steve Shreiner, ISA Board Certified Master Arborist and owner of Shreiner Tree Care.

Last fall, the Arboretum decided to revive the Tree Discovery Guides that had been sitting dormant for the past several years. These guides and corresponding map became outdated as certain trees died or were damaged and removed, but the content within them is so interesting and valuable, that visitors should have access to them regardless of a few missing trees.

In recognition of reestablishing the Tree Discovery Guides, we invite you to go on a tree discovery walk with Steve Shreiner. Steve has provided arborist services at the Arboretum for over 30 years and there are few people who know this woodland like he does. Steve will share some tips for identification, point out some of the more remarkable specimens, and even recount some of the stories and lore attached to some of these trees.

Free of Charge. All are welcome.

Vintage & Weird Gardening Tools

Tuesday, April 25, 2017, 7pm

Sponsored jointly by The Radnor Historical Society and Jenkins Arboretum & Gardens



Dr. Harold Sweetman, Executive Director of Jenkins, will give a lecture and demonstration about unusual and vintage gardening tools that will both entertain and inform.

There will also be a display

and discussion of his own collection of unusual, useless and downright hilarious tools which were marketed over many decades in the guise of making gardening easier. If you have a weird gardening tool, bring it along, share your discovery, and you may even win our special award!

Prior to the lecture you are welcome to enjoy the beautiful grounds and walking trails of the Arboretum!

Refreshments, including wine and snacks, will be served following the presentation.

Free of charge. All are welcome. Pre-registration is encouraged.



Valley Forge Chapter of the American Rhododendron Society Annual Public Plant Sale

Opening Night Party and Preview Plant Sale: Friday, May 5, 6:00 – 9:00pm

To purchase tickets please contact VFARS: www.valleyforgears.org or fill out and mail the RSVP form on page 18.

Public Plant Sale: Sat. May 6 9:00am – 3:00pm and Sun. May 7, 11:00am – 3:00pm

Presented by the Valley Forge Chapter of the American Rhododendron Society

A not-to-be-missed annual event, this is one of the largest public garden plant sales in the area. Offered will be plants ideally suited for area gardens, including rhododendrons, azaleas, and companion plants not readily available elsewhere.

Thousands of native perennials, wildflowers, ferns, and slow-growing conifers, as well as donated plants from Society members' gardens will be for sale.

We offer great prices, terrific plant selections, AND your gardening questions will be answered by our knowledgeable horticultural staff and expert gardeners. Jenkins members may pick up their complimentary thank you plants during the sale.

For more information on the public plant sale, or to request specific plants, call Chris Smetana at 610-688-5249.

Saturday & Sunday Plant Sale is free of charge. All are welcome.



Rhododendron and Azalea Flower Show

Sunday, May 14, 1-5 pm

Presented by the Valley Forge and Greater Philadelphia Chapters of the American Rhododendron Society



Do not miss your chance to see this gorgeous flower show highlighting many of the rhododendron and azalea species and varieties that can be grown in Southeastern Pennsylvania. Members of the Valley Forge and Greater

Philadelphia Chapters of the American Rhododendron Society will submit hundreds of rhododendron flowers (trusses) and azalea sprays for this competitive show, making for a stunningly beautiful and highly educational display in the John J. Willaman Education Center at Jenkins Arboretum. For more information, visit the Valley Forge Chapter of the American Rhododendron Society online at www.valleyforgears.org

Free of charge, no pre-registration required.

Delaware Valley Iris Society Events

Iris Show: Sunday, May 21, 12-4 pm

Japanese Iris Show: Saturday, June 17, 12-4 pm

Iris Sale: Saturday, July 15, 10 am-1 pm

The Delaware Valley Iris Society (DVIS) will be having several events at the Arboretum again this year. There will be two shows with both stalks of colorful irises and flower arrangements containing irises on display. The first show will be on Sunday, May 21. All types of irises may be there, but the majority will be Tall Bearded irises.

The second show will be on June 17 and will feature Japanese Irises as well as other types of irises.

We welcome anyone who is interested to come and exhibit at these shows. You need not be a member of either DVIS



or Jenkins in order to do so, and there is no charge for entering. You do not have to preregister in order to exhibit. Anyone interested in exhibiting should plan on arriving at 8 am.

Both shows will be open to the public between 12 and 4 pm. Photography is encouraged! There will be knowledgeable members on hand to answer any iris questions that you might have.

There will be a sale of all types of iris plants and rhizomes at the Arboretum on Saturday, July 15, from 10:00 to 1:00. Please come early for best selection!

If you are interested in any of these events, please check the DVIS website (www.dvis-ais.org) or contact Vince Lewonski at vince@dvis-ais.org.

Delaware Valley Daylily Society Annual Public Plant Sale & Auction

Saturday, August 26, 9am - noon, Auction: 1-2pm

The Delaware Valley Daylily Society (DVDS) will have its annual plant sale and auction here at Jenkins. There will

be an extensive variety of daylily cultivars, grown by members of DVDS. Members will be available to answer your questions and help you decide which varieties are best for you. This sale will feature daylily cultivars in red, pink, purple, yellow, orange, and white. Some special cultivars in unusual forms, including spiders and double blooms will also be available.

Daylilies are easy to grow and worth considering as a spectacular addition to any garden. Please check the website for more information:

www.delawarevalleydaylily.org.

Like them on Facebook: [DelawareValleyDaylilySociety](https://www.facebook.com/DelawareValleyDaylilySociety).

Free of charge. All are welcome. Rain or shine.

No pre-registration required.



2017 Green Ribbon Native Plants®

Hubricht's Bluestar (*Amsonia hubrichtii*)

This beautiful clump-forming herbaceous perennial has many noteworthy characteristics making it an excellent



choice as a Green Ribbon Native Plant®. It is a member of the Dogbane plant family or Apocynaceae. One trait expressed by members of this family is a milky/latex sap. Due to this, *A. hubrichtii* is not preferred by deer. It is known for its elegant powdery blue star shaped flowers which grow in clusters at the ends of the stems. These delicate flowers make an appearance

in late spring around April and last until the end of May, sometimes even longer. The foliage is another notable characteristic. The thin, filamentous leaves grow along the stem in an alternate fashion. They are a beautiful green during the growing season and turn to a stunning yellow during the fall. This foliage can bring nice texture and color to any garden.

Native to south-central United States, *Amsonia hubrichtii* can grow to about 3 feet tall and spreads 2-3 feet at maturity. This plant is ideal for many different garden situations and is very low maintenance. It performs best in well drained, rich soil but can tolerate a wide range of conditions. *A. hubrichtii* produces the best fall color in full sun, however, blooms may persist longer if given some afternoon shade. It is also notable that *Amsonia* is the preferred nectar source for Mourning Cloaks and other early butterflies. Sometimes the plant may grow too tall and flop over. In order to prevent this, it is recommended that you cut back the stems about 1/3 after it's finished blooming.

Rose Mallow (*Hibiscus moscheutos*)

The common rose mallow or swamp mallow is an upright shrub-like herbaceous perennial that is commonly found



in moist areas such as marshes or lake shores. *H. moscheutos* is a member of the Mallow family or Malvaceae. This plant is unique because you can bring those showy tropical

looking hibiscus flowers to the garden. The flowers are typically large, beautiful, and funnel shaped with five separate petals. Interestingly the stamens and stigma are fused into one structure called

a column. Petals are normally white, pink, red, or some variation in between. *H. moscheutos* flowers are normally darker towards the middle and can become quite large and showy reaching anywhere from 8 to 10 inches. Though an individual flower may only last a short period of time, the plant itself continues to bloom through late summer into fall. The rose mallow can bring quite the accent to any garden and it is recommended to plant a group of three or more for a visually appealing effect.

This plant is native to the eastern and southern parts of North America and can be grown in hardiness zones 5-10. The rose mallow can grow rather tall, reaching anywhere from 5 to 7 feet in a single growing season. Since it is capable of growing so much it may need to be staked for support. The optimal growth conditions for *H. moscheutos* are full sun and moist soils rich in organic matter but, it can tolerate lower quality soils even those containing salt. It will grow very well in these conditions as long as the soil is not allowed to dry out. If this plant is being grown in colder regions, one should consider mulching during the winter to protect the roots from frost. Also it is recommended to prune in the early spring for a bushier growth form. Japanese beetles have been known to cause damage to the foliage of this plant if left unmanaged.

Forever Jenkins Endowment Campaign

continued from cover

future of the gardens. Jenkins Arboretum & Gardens does all of these things to assure perennial growth. We invite you to become a partner in our growth by supporting our Endowment Campaign, which:

- Preserves a garden sanctuary and living museum, 48 acres of Chester County’s rapidly disappearing natural terrain
- Showcases unique botanical collections of the area’s native landscape and plantings, primarily of the heath family (Ericaceae) including rhododendrons, azaleas, mountain laurels, pieris, blueberries, and many others
- Promotes environmental stewardship and serves as a model for the community in sustainable environmental practices
- Fulfills the vision of H. Lawrence Jenkins to honor his wife, Elisabeth, and to celebrate her life by making their woodlands into an outdoor showcase and fresh air classroom for public enjoyment and education.
- Educates the public on the advantages of using native plants in the landscape to promote biodiversity in gardens

What part of Jenkins’ Mission is most important to you?

This donation amount	ENDOWS this much
\$500,000	1 acre
\$250,000	.5 acre
\$125,000	.25 acre
\$50,000	4,000 sq. ft.
\$25,000	2,000 sq. ft.
\$15,000	1,225 sq. ft.
\$10,000	800 sq. ft.
\$5,000	400 sq. ft.
\$2,500	200 sq. ft.
\$1,500	120 sq. ft.
\$750	60 sq. ft.
\$500	40 sq. ft.
\$250	20 sq. ft.
\$100	8 sq. ft.

Join others in endowing an acre and help us reach our goal of \$20 million – 37% left to go!

The Big Picture: Long Range Planning

The Long Range Planning Committee of the Jenkins Board is busy looking forward to the next 50 years and how we (this includes YOU) would like to see Jenkins Arboretum & Gardens develop over that period of time.

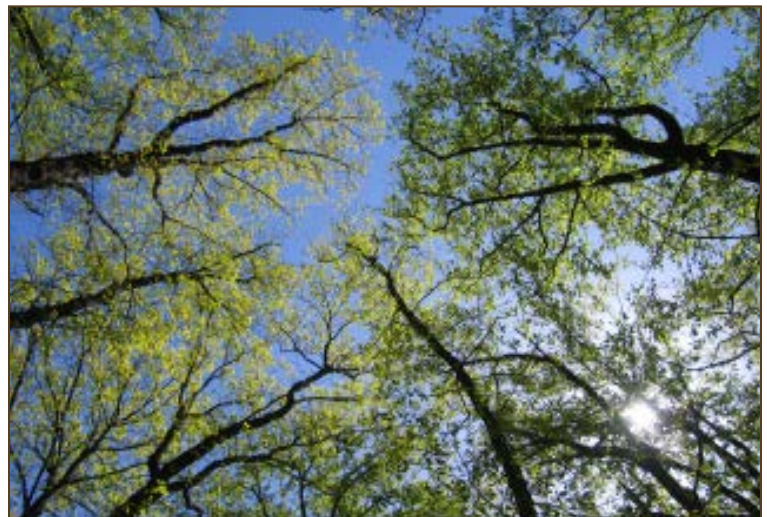
The volunteers and staff have participated in focus groups under the direction of two Board members and we would love to have input from ALL of our members as well. To that end, we pose two important questions:

1. What do you love about Jenkins and want to remain unchanged?
2. What changes would you want to see at Jenkins?

Your thoughts on the matter are very important to us in helping to plan the future. We sincerely hope that you will take part in this planning opportunity by giving us your thoughts on these two questions. Please email your responses to [LRPSurvey@jenkinsarboretum.org](mailto:LRPsurvey@jenkinsarboretum.org) or send by regular mail to:

Sharon Harris
 c/o Jenkins Arboretum & Gardens
 631 Berwyn Baptist Road
 Devon, PA 19333

Thank you!



Special Behind The Scenes Golf Cart Tours of Jenkins Arboretum & Gardens

New Member Benefit!

Thanks to the generosity of one of our Board members, Jenkins now has a six passenger electric golf cart, and we are able to offer guided tours by trained docents as a special thank you member benefit. The tours will take you down to the pond and will include “behind the scenes” areas of the Arboretum property, not normally open to the public, such as the gardens around the Jenkins House and the Browning House. Tour guests will be able to see the apiary and the new plantings leading to the Conservation Woodlands.



Our goal is to assist people who find the garden topography a challenge so that all people may enjoy the special delights that Jenkins has to offer.

Members of Jenkins may ride free of charge with a suggested voluntary donation for non-member guests or extended family. Members may bring guests for a tour with the hope that they, too, will become Arboretum members. If guests become members, the tour will be complimentary for all! If available, non-members may also make reservations for golf cart tours by making a donation.

People on golf cart tours will receive much valuable information and education about the gardens and the plants, as well as about Jenkins’ mission. This is a wonderful opportunity to become more familiar with the gardens you love and to introduce new friends to the special features of the Arboretum.

Tours will be scheduled by reservation by calling 610-647-8870 x154 or by emailing webinfo@jenkinsarboretum.org.

Eagle Scout Partnerships



Joey Ibarra (fourth from left), of the Devon 50 Scout Troop, led a group of more than 20 fellow scouts to accomplish the first of two Eagle Scout projects completed at the Arboretum last fall. He created a log-lined trail through a 1-acre tract of Conservation Woodlands on the Browning Hillside. The two main goals of the project were to reduce the large amount of woody debris through the woods and create an aesthetically appealing and easily walkable path. As the logs and branches that edge the trail rot away, we will continue to add more in the hope that someday the area may be open to the public, but until then, it remains a maintenance trail for staff access.



Brent Sudall (third from left) led a group from the Great Valley Troop 106 the very next weekend. Brent and crew sweated through one of the most oppressively hot and humid days of the year, but persevered to complete the final planting of a floodplain restoration effort that has finally come to a conclusion after more than five years of work. We could not have been more proud of this accomplishment or more appreciative for all of Brent’s hard work. This is another area that may, in time, be open for public viewing. Until that time though, we’ll watch it grow and will continue to look for more partnership opportunities.

Preserving Plant Genetics - A Collaborative Effort

As the Arboretum's plant collections continue to mature and space becomes more limited, it is important that we now narrow our focus. For rhododendrons and evergreen azaleas, an effort is made to collect only the very best hybrids or collections from particular hybridizers. Specifically, these include the large leafed rhododendrons created by John Doppel and the evergreen azaleas created by Joe Klimavicz. When it comes to native, deciduous azaleas though, it isn't quite as straightforward.

One of the greatest benefits of participating in American Public Gardens Association's Plant Collections Network (PCN) is that it encourages you to think strategically about your curatorial practices, and collaborate with other like-



R. colemanii (Red Hills Azalea)



R. austrinum (Florida Azalea)

minded organizations to ensure that plant genetics are being preserved. As we begin to focus on genetics, the provenance, or location from which the seed used to grow the plants was collected, becomes very important. Understanding this, we have had two exciting opportunities to add large numbers of known-provenance deciduous native azaleas to our collection.

The first was through a very generous gift of nearly 100 known-provenance native azaleas from our friends at Mt. Cuba Center. In total, there were 9 different species and 17 different accessions. These included some pretty exciting specimens such as a shiny-leaved selection of *R.*

arborescens (sweet azalea); a larger-than-normal flowering selection of *R. colemanii* (Red Hills azalea), a species only recently discovered; and the very late-blooming *R. arborescens* var. *Georgiana* which blooms in July alongside *R. prunifolium* (plumleaf azalea). The donation also included 4 different accessions of flame azalea, *R. austrinum* which are now planted under the pine trees near the pond. With 17 seed-grown flame azaleas, it will be interesting to see the genetic variation which can lead to variations in growth form and even flower color. Yes, even though they are the same species, and even though flame azaleas are typically orange, some could end up



R. vaseyi (Pinkshell Azalea)

being nearly yellow and some could end up being nearly red.

The second opportunity came from a seed collecting trip to the Southeastern U.S. by Executive Director, Harold Sweetman. Harold accompanied Tom Clark from Polly Hill Arboretum who was in search of the rare Pinkshell Azalea (*R. vaseyi*) for a research study. Of

course, no good plantsman can venture into the woods in search of one thing and not end up with some others. Harold brought back 23 total accessions of 9 different species. The Arboretum's staff grew the plants on a light rack until they were ready to be pricked out and potted up. Now, there are hundreds of azaleas being grown on for planting throughout the garden. Of course, ever thankful for the gifts we are given, we also shared several of these plants with Mt. Cuba.

The gardens just keep getting better and better and we hope you will look for these new additions next spring.

A Walk in the Woods

November 5, 2016 was, by all accounts a beautiful fall day. The air was fresh, the sun was shining, and the leaves were putting on a colorful show. It could not have been a more perfect day for our annual stroll through the 10-acre tract of Conservation Woodlands on what we call the “Browning Hillside”. These 10 acres are part of nearly 30 acres of conserved woodlands owned by the Arboretum, but are the only ones reasonably accessible. In the past, this walk was restricted to the Board of Directors as we continue to evaluate these areas and discuss the potential that exists within them. With the restructuring of our membership benefits however, this year we extended the invitation as a thank you to our Patron, Sustaining, and Circle of Friends members, which includes any member that joined at the \$250 level or higher.



What may have seemed to be a simple walk in the woods turned out to be much more as participants were treated with surprise refreshments and stops along the way. The first stop was the apiary where we sampled this year’s honey harvest and discussed the Arboretum’s efforts to improve the ecological value of the surrounding 1-acre piece of property. This area, which had previously been mowed grass, has been planted with a diverse mix of 60 species of trees and shrubs and thousands of the most highly pollinator-friendly perennials. Walking through this area, we stopped to look at some of the more significant specimens and ended up at a clearing, and our first beverage. To tie into the theme of bees and honey, participants were surprised with the first of three kinds of mead (honey wine) they would sample along the way. The first was a dry, slightly sweet wine made entirely with honey. It was a first for some of our guests – what fun!

From there we made our way into the woods. The first section, which is within the deer fence, was easily walkable, as this past fall, a member of the local Boy Scout troop completed his Eagle Scout project by creating a log-lined trail through that section of woods. All agreed, it made navigating much easier and it was an attractive way to create the woodland path. Then, guests went outside the fence for a completely different experience. As with most of the natural areas in our region, deer have decimated the understory leaving only larger trees and some invasives such as stilt grass. These larger trees are spectacular and include many old specimens, mainly red oaks and tulip poplars. We sauntered through the trees and came upon an old quarry that had long been abandoned. Long enough ago that 3’ diameter tulip poplars now grow from its sides. We found the old road to the quarry and once again, had a sip of mead - this time, it was a sweeter selection more like what you might expect from a drink made with honey. Then it was down the hill with a great view of the steep, rocky hillside across Devon State Road. The light was perfect and the beech trees were glowing in full autumn glory. What a sight! Walking back to the Arboretum, we stopped to admire the Arboretum’s restoration efforts along Devon State Road, where 50 invasive trees and shrubs, mostly Norway maple, were removed and replanted with suitable native species.

The tour concluded just below the Jenkins House with a third sip of mead - this time, a sweet combination of honey and grape wine. It was here that we all parted ways. Some visited the Jenkins House, while others took advantage of the beautiful day and strolled through the rest of the gardens. It was wonderful to thank so many members and friends, old and new, for joining us and as it was the first activity we’ve done like this, I think we can say it was quite a success. We look forward to many more.



Thank You, Thank You

Membership & Gifts in 2016

We extend our sincere gratitude to our donors and a special thank you and recognition to our True Green long-term supporters.

True Green Symbol Key:

- ★ – 20 plus years
- – 15 plus years
- – 10 plus years
- ✦ – 5 plus years

Over \$10,000

- The Arcadia Foundation ✦
- The Armstrong Foundation
- Katherine & Pete Bennett ●
- The CHG Charitable Trust
- Thomas S. Wall & Scott A. Conking ●
- Nancy & John Fischer ✦
- The Hamilton Family Foundation ★
- Ms. Sharon Harris ■
- Phil & Karla Herr ★
- Mr. & Mrs. John Linvill ✦
- Otto Haas Charitable Trust II ■
- Ruth W. & A. Morris Williams ■
- Mrs. Robert Wolcott ★



\$5,000-\$9,999

- The Allerton Foundation
- Valley Forge Chapter of the American Rhododendron Society ●
- Ms. Helen H. Ford ●
- Dr. Janice Gordon ■
- The Huston Foundation ■
- Marion Kukula ●
- Lawrence Saunders Fund ✦
- Shreiner Tree Care ■
- Mrs. Sally Wood ★

\$2,500 - \$4,999

- Mr. & Mrs. Frederick C. Fletcher II, Esq. ■
- Mrs. Nancy G. Harris
- Eva Jackson ★
- Tim & Monika Panger ■
- Spionkop Charitable Trust ✦
- Nancy G. King Tuleikis Charitable Remainder Trust
- Mr. & Mrs. Roger M. Whiteman, Esq. ★

\$1000 - \$2499

- Mr. David Alcorn ★
- Barbacane, Thornton & Company LLP
- Bonnie Marcus & Mike Bennett ●
- Mrs. Dierdre Bilotta
- Mrs. Jean G. Bodine
- Brandywine Realty Trust
- John Buhl ✦
- The Chanticleer Foundation
- Crocodile Enterprises Inc
- Karen & Ed D'Alba ■
- Delaware Valley Iris Society ●
- Eadeh Enterprises
- Jim & Kay Gately ■
- Howard Holden ✦
- Mrs. Annabelle P. Irely ★
- Ms. Pamela Joy Jensen ✦
- LeBeau Landscapes LLC
- Susan LeBoutillier
- Julie B. Leisenring ★
- Evamarie Malsch ●
- Victoria B. Mars & David R. Spina ■
- Mr. & Mrs. Paul Mecray, III ✦
- Charlene & Frank Millheim ●
- Mr. & Mrs. Percival B. Moser ★
- Mrs. Sally M. Novello ●
- Mrs. Wendy Paul ✦
- Mrs. Pauline Raughley ■
- Mr. & Mrs. Michael Rhoads ●
- Mrs. Noma Ann Roberts ■
- Ms. Betsy Schumacker ★
- Mr. & Mrs. William Schwarze ●
- Mr. & Mrs. Robert J. Smetana ●
- Ardyth & Frank Sobyak ■
- Dr. & Mrs. Harold Sweetman ★
- Thayer Corporation
- The Pennsylvania Trust Co
- Urban Engineers, Inc
- Cole & Carla Vastine ✦
- Ms. Lois Veale ■
- The H.O. West Foundation
- Woodlynde School

\$500 - \$999

- Aqua Pennsylvania, Inc.
- Mr. & Mrs. Pierce Archer ■
- Mrs. Cheryl A. Avery ■
- Berwyn Garden Club ✦
- John & Eve Bogle ✦
- Ms. Rebecca Bradbeer ■
- Karen & Doug Brown ■
- The Bryn Mawr Presbyterian Church
- Marilyn Sifford & Bob Butera ■
- Mr. & Mrs. Richard J. Ciamacca
- Ms. Barbara R. Cobb ●
- Community Garden Club at Wayne ★
- Mr. & Mrs. Gene Cordes ✦
- Elizabeth A. Correia ★
- Mrs. Aldys Davis ★
- Delaware Valley Daffodil Society ■
- Delaware Valley Daylily Society
- Mr. & Mrs. Don Detwiler ✦
- Angela Scully & George Elser ●

Epps Plumbing & Heating, Inc

- Ann & Charlie Fletcher ✦
- Mrs. Anne Clark Godfrey ✦
- Mr. & Mrs. Donald C. Graham
- Jack & Laura Gregg ●
- Ronald & Elizabeth Harmon ✦
- Dr. Ian Harris
- Mary Ellen & Tom Heisey ✦
- Mr. & Mrs. Steve Henning
- Dr. Linda Himmelberger ●
- Reverend & Mrs. George Hollingshead ■
- Mr. James R. Holt, Jr.
- Mr. & Mrs. Edward Kennedy ■
- Mrs. Gretchen Kiernan ✦
- Lincoln Financial Advisors Corp
- Donald & Patricia Littlewood ✦
- Janietta & Patrick Lusk
- Jane C. MacElree ✦
- Mr. & Mrs. Duane S. Malm ★
- Miller Worley Foundation
- Mrs. Anne T. Moore ●
- Mr. & Mrs. Peter Moscufo
- National Veterinary Associates
- James Dobner & Helen Negus ●
- Frances Pane ■
- Dr. & Mrs. Robert Priem ■
- Rare Plant Grp Garden Club of America ✦
- Riley Riper Hollin & Colagregco
- Ms. Debbie Hughes Roberts ■
- Dr. Philmore Robertson, Jr. ●
- Ms. Suzanne Roth ✦
- Mr. George Rubin
- Ellie H. Smith ■
- Rosalie Phipps & Craig Stock
- Lisa & Andrew Tobias ✦
- Milena & Fulvio Trosini ✦
- The Weeders Garden Club ★
- Bonnie & Phil Witmer
- Dr. Elizabeth McGee Wood ★
- Woodlea Garden Club ★
- Dr. George Yu

\$250 - \$499

- Dr. Terry Allen
- Amring Pharmaceuticals
- Dr. & Mrs. Dean A. Arvan ■
- Ms. Carolyn Bahl
- Ms. Julie Blank
- Carol Jerdan & Edward Boehne ★
- Mr. & Mrs. James P. Brazel ■
- Mrs. Virginia C. Brookins ■
- Mrs. Laura L.T. Bullitt
- Mr. McBee Butcher
- Diana & Tim Calligan ■
- Mr. & Mrs. Laurence Carolan ●
- Jeffrey & Edith Chapman ■
- Nancy Cosmos ✦
- Valerie W. Craig
- Mr. & Mrs. Robert H. Craven, Jr. ✦
- Daughters of the British Empire of PA
- De Lage Landen Financial Services
- Del. Valley Ornithological Club

- Devon Liberty
- Mr. Larry DeYoung & Dr. Joyce DeYoung ●
- Mr. & Mrs. Albert Doering ●
- Miss Debbie Dooling
- Ms. Janet Dreher ✦
- Easttown Library
- Mrs. Helen Elkins ✦
- Daniel Levine & Heather Fitzgerald ✦
- Four Counties Garden Club ★
- The Garden Club of Philadelphia ■
- Gerrity Agency, Inc.
- Glen Valley Garden Club ★
- Len & Eve Gottesman ✦
- The Greater Philadelphia Chapter of the American Rhododendron Society ■
- Mr. Francis R. Grebe ★
- Nancy & Bob Greenwood ★
- Mr. and Mrs. Julian Guzman ✦
- The Hardy Plant Society
- Dr. Michele Hawk ■
- Lynne Heckler ■
- Herb Society of America
- Dr. & Mrs. Colin Hingley ●
- Heidi & James Hole
- Mr. & Mrs. Frederick B. Holmes, Jr. ■
- Gayla McCluskey & David Humphrey ✦
- Dr. Ronald A. Javitch
- Mrs. Caroline R. Kemmerer ■
- Peter & Mary Kreek ■
- Land-Water Stewardship Panel
- Dr. Joan E. Lynaugh ●
- Main Line Health/Bryn Mawr Hospital
- Main Line Unitarian Church
- Master Gardener's of Delaware Cty
- Tom & Linda McCarthy ●
- Mrs. Mary McElroy ★
- Ms. Leslie Anne Miller & Mr. Richard Worley
- Modus Operandi
- Martha Morse ●
- Mr. & Mrs. Edmond H. Morse ■
- Multi-cultural Academy Charter School
- Murphy Charitable Foundation
- Vijay Narayanan & Sushma Rajagopalan ■
- Mr. & Mrs. Lathrop B. Nelson ■
- Ms. Helen T. Ockenden ✦
- Ms. Brenda J. Oliphant ●
- Mr. & Mrs. Paul W. Olson ●
- Mr. & Mrs. Michael Park ★
- Ted & Anne Patterson ✦
- Mr. & Mrs. William H. Pentz ✦
- Mr. & Mrs. Leland Perry ✦
- Mr. F. Laurence Pethick ●
- Mrs. Doris Petty ✦
- Phila Society of Botanical Illustrators ■
- The Planters
- Mr. & Mrs. Herbert Reichert ●
- Cackie Rogers ✦
- Ron & Carole Rubley ●
- Mrs. Jane Ruffin ●
- Ms. Lisa M. Schellinger
- Seed & Weed Garden Club ✦
- Bruce & Laura Shook ●

Bill & Cathy Siple ■
 Mr. & Mrs. Sherwood H.
 Spadafora ★
 Mr. & Mrs. C. Stewart W. Spahr ●
 Mr. & Mrs. Donald Strumpf ●
 Mr. & Mrs. William Thomsen †
 Victoria Todd †
 Mrs. Blanche Levitt Torphy
 Ms. Irene Uzinskas
 Mr. & Mrs. Richard Veith ★
 Villanova Garden Club †
 Mr. George K. Wallace †
 Mrs. Penelope P. Watkins ●
 Mrs. W.E. Zabel, Jr.
 Sandra Crow & David Zopf ■



\$100 - \$249

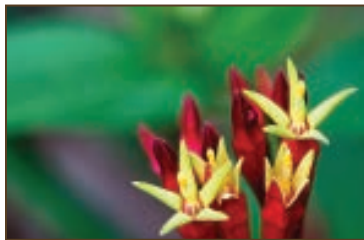
A.C. Johns and Associates †
 Jeanette & Chris Alwine
 Dr. & Mrs. Marvin Andersen ■
 Mr. Doug Balfour
 Rick Ray & Liz Ball ■
 Mr. & Mrs. Robert R. Bankhead
 John Barbis
 Jane Barrow
 Debbie & Douglas Bellew †
 Dave & Shawn Bellwoar †
 Ms. Phyllis Belzak
 Mr. & Mrs. Lawrence H. Berger †
 Karel & Betty F. Bernady ●
 Ms. Liza Jane Bernard
 Joe & Joyce Berry
 David Poll, MD &
 Rebecca Bien
 Bindy ■
 Jonathan & Toni Black ●
 Mr. & Mrs. Don K. Black †
 Barb Blynn †
 Botanical Society of Western
 Pennsylvania
 Mrs. Marcha Botje ■
 Mrs. Teresa Boyle ●
 Mr. & Mrs. Roger Brace ■
 Mr. & Mrs. Craig Brady ●
 Mr. & Mrs. William Braun †
 Cricket Brien
 Mrs. Joan B. Bromley ■
 Mrs. Maria F. Brooks †
 Thacher & Lloyd Brown
 Meredith & Richard Brunel †
 Mr. & Mrs. Henry Bryans ■
 Mr. & Mrs. Thomas C. Buechle ●
 Mr. Robert B. Camp †
 Mr. & Mrs. Jack Campbell ★
 Mrs. Jenny Rose Carey ■
 Dr. John T. Carpenter ●
 Lauriston & Valerie Castleman †
 David & Nancy Charkes ●
 Ms. Debra Charlesworth ●
 Mrs. Rosemary Chen ■
 Steven & Carol Ann Cherry ●
 Ken & Debbie Chiarello ●
 Ms. Valerie Chuse
 Ed Berg & Deborah Clark ●

Miss Rosemary Clark ■
 Mr. & Mrs. Isaac H. Clothier, IV ■
 Ms. Mary B. Coe †
 Mr. & Mrs. William Coffey ●
 Mary Ann Collett ●
 Mr. & Mrs. William L. Conrad ■
 Mr. & Mrs. Harold P. Craig, III ●
 Courtney & Jack Crosby ●
 John Dale
 Mr. Marc Davidson †
 Dr. Richard Davies ●
 Ms. Christine DeBonis
 Richard & Cathy Decker ■
 Mr. Bill DeHaven ●
 Paula & C. Frederick Delong †
 Mr. Vincent DiBella ■
 Ms. Marcia Dickerson ■
 Middy Dorrance †
 Mr. & Mrs. Jack Edson ●
 Mrs. Miriam LeB Epps †
 William & Anne Ewing
 Donald & Sally Firth ●
 Mr. Daniel Fischer
 Virginia Fitzpatrick †
 Mr. & Mrs. Joseph Flood ●
 Ms. Christine Frederick ■
 Dr. & Mrs. Erich Freimuth ●
 Ruth & Klaus Fuelleborn ■
 Ms. June Fulton †
 Mr. & Mrs. Harry C. Garber ★
 The Gardeners ●
 Ms. Judi Garst †
 Mrs. Barbara Geltosky †
 Susan Gerrity
 Ruth H. Gibson †
 Dr. Frances M. Gill
 Mrs. Jane P. Godshalk †
 Ms. Allison Goodwin
 Mrs. Robert Greeney
 Mr. & Mrs. Bud Gressman ●
 Ms. Elizabeth Grigg ★
 Mr. & Mrs. Martin E. Grossman †
 Mr. & Mrs. John M. Guinan ■
 Julia & Alan Hair †
 Mrs. Margy Hamilton
 Mr. Kenneth R. Hamm ★
 Mr. & Mrs. Paul Hartmann ■
 Ms. Linda Fowler Hartnett †
 Mrs. John S. C. Harvey, III ●
 Sharon Downs & Janet Helms ■
 Ms. Nancy Hemberger
 Mr. & Mrs. Richard A.
 Henderson †
 Mrs. Joan Henderson
 Ms. C. Ashton Hergenhan
 Bennett & Pedie Hill ■
 Mrs. Anne Hillegass †
 Tony & Lynn Hitschler †
 Ms. Sally D. Hoey
 Jeanne & Robert Honish
 Mr. & Mrs. William Prentiss
 Howe, IV ■
 Kathy Howell
 Kerry Hughes
 Mrs. Nancy Hustis
 Ikebana International
 Mr. Edward B. Ingersoll ★
 Ed Ruby & Kathleen Jackson ●
 Mr. & Mrs. Richard Jaffe ●
 Mrs. Myrna Jakobowski †
 Mrs. JoAnne Johns ■
 Thomas & Ella Johnson
 The Johnson Company

Leslie Wright Jones ■
 Junior League of Phila. Inc. Garden
 Club ■
 Mr. & Mrs. Warren Kampf
 Ms. Glenna LaSalle Keene ■
 Mrs. Cathy Keim ■
 Anne Kellett ●
 Mr. & Mrs. James J. Kelly †
 Ms. Patricia Kerr
 John O. Senior &
 Nancy Kimmons ★
 Mr. Ray Klaus &
 Mrs. Carol Klaus †
 Maggie & Jeffrey Knapp ★
 Laura Koster
 Mr. & Mrs. Stephen Kozicki ■
 Mr. & Mrs. Richard Kreamer ■
 Dr. Evelyn S. Kritchevsky ■
 Ms. Lorán Kundra
 William Kunze
 Mrs. Margaret Laganelli
 Joyce & David Laubach ■
 Mr. & Mrs. Bob Lawler ■
 Ms. Susan Lea
 Janice Legg ■
 Mr. & Dr. Stefan Levie ■
 Mr. and Mrs. Howard H. Lewis
 Thomas H. Lewis †
 Dr. Ronald Lipkowitz ●
 Nancy Loane
 Ms. Eileen Longacre †
 Mr. & Mrs. John A. Lord †
 Mr. Frank Luca
 Lynn Mander ■
 Dr. & Mrs. W. Steven Mark †
 Bill & Esperanza Marshall ●
 Mrs. Susan Marshall
 Mr. & Mrs. William G. Matthews ■
 Ms. Mary Mayer †
 Mr. & Mrs. Robert McCabe ★
 Ms. Mary McCracken ●
 Mr. & Mrs. Joseph McFalls ★
 Mrs. William McLean †
 Mrs. Barbara McNally
 Pamela Merriman
 Mrs. Judy Mileto
 Dr. & Mrs. Stanley J. Miller ●
 Marjorie L. & Arthur P. Miller †
 Mrs. Nancy Lee Miller ★
 Mr. & Mrs. Thorley Mills, Jr. ●
 Mrs. Howard G. Minckler ●
 Ellen & Douglas Moeller †
 Ms. Penny Moldofsky
 Mr. Steve Mostardi †
 Frank X. & Rose Mary Murphy
 Mr. & Mrs. Gary Murphy †
 Susan H. Murphy
 Alan & Rosemary Neary †
 The New York Botanical Garden
 Mr. William S. Newlin, Jr. ★
 Mr. & Mrs. Joseph Nigro ■
 Gillian Norris-Szanto &
 Jeffrey P. Szanto ■
 Gerald & Kathleen O'Dell †
 Ms. Maris Ogg
 Old Eagle Garden Club †
 Andy Jones & Judith Olsen
 Barb & Bob Omrod
 John & Lee Paylor
 PECO
 The Pennsylvania Horticultural
 Society †
 Mrs. Phyllis Pfister ■

Mr. & Mrs. Lucian B. Platt ■
 Ms. Joann Polise
 Ms. Jane Pompetti
 Raymond & Elizabeth Poppert ■
 Dr. Richard Arlen Price †
 Mr. & Mrs. John Pritts ●
 Virginia F. Pusey †
 Mr. & Mrs. Joseph Pyle ■
 Radley Run Garden Club
 Mr. & Mrs. John N. Reardon ●
 Richard & Gail Reber
 Mr. Nicolas Renon
 Mrs. Alex Revell
 Dr. Olive J. Rich ●
 Max & Sally Richter ■
 Minney & Ted Robb ■
 Mrs. Linda Roccas
 Drs. Bryan Ruda &
 Natalie De Barros
 Mrs. Margaret Anne Rue ●
 Lloyd & Sandra Russow
 Sam Browns Wholesale
 Nursery Inc
 Mr. Gerald Satlow ■
 Mr. Phillip H. Schearer ■
 Carolin Schellhorn
 John Schmidhauser &
 Marilyn Schneider ●
 Dr. & Mrs. H. Ralph
 Schumacher ★
 Ms. Adrienne Schure
 Kathy Fisher &
 Mordecai Schwartz †
 Theresa A. Seiverd †
 Mrs. Alice M. Sharp †
 Mrs. Marcia Shearer ■
 John Wellenbach & Ann Sholly ■
 Ms. Edith A. Shooster
 Andy Smith ●
 Mr. John F. Smith, III
 Ms. Tina Smith
 Pat & Brian Smith
 Mimi Snyder †
 Mr. & Mrs. John C. Snyder †
 Mr. Ken Snyder
 Mr. Al Sommar
 Mrs. Julia D. Spahr ●
 Dr. Peter Sparks &
 Dr. Margaret Holley ■
 Mr. & Mrs. Barry R Spiegel ★
 Marilyn & William Sprague
 Claudia & David Steckel ★
 Karen Steenhoudt &
 Phillip Dell Orco
 Mrs. Elizabeth Stevens ■
 Mr. & Mrs. David Stitely
 Mr. & Mrs. Matthew Strickler
 Amy Szwajkoski †
 Mary W. Talbot †
 Bill Bailey & Melinda Taylor ■
 Ms. Cheryl Taylor
 Mr. Kenneth Tenley
 The Yoga Group
 Robert & Barbara Tiffany ■
 Ms. Elizabeth Townsend
 Trinity Presbyterian Church ■
 Mr. & Mrs. Alden Tucker ●
 Robert Leonetti &
 Martha Turner, MD ■
 United Church of Christ
 at Valley Forge
 Ms. Connie Vegso
 Dr. & Mrs. R. Lee Vogel ●

Michael & Susan Wachter ★
 Minna Walsh & Steve Wood ●
 Frank & Ada Warner ●
 Ken Butera &
 Karol Wasylshyn, Psy.D. †
 Wayne Woods Garden Club ●
 Shirley Ann Weaver †
 Mr. Richard Webb †
 Dr. & Mrs. Joseph Weinstock ■
 John Wenderoth &
 Annette Hearing ■
 Mr. Edward Westerman
 Carla E. Westerman Trust
 Ms. Mary Westervelt ●
 Ms. Cynthia White
 Mrs. Elaine Whitman †
 Mr. & Mrs. Drake Williams, Jr. ■
 Mr. & Mrs. Thomas Williams ■
 Mrs. Penelope P. Wilson †
 Mrs. Barbara T. Winter ●
 Carol Wolfington †
 Kurt & Chris Wolter †
 Mr. & Mrs. Alan Woodbury ●
 Steve & Mary Wright †
 Lois & Murph Wysocki
 Mr. G. Kurt Zeisler †
 Mrs. Josephine Zelov
 M. Sinclair Adams Ziesing



Regular

Mr. Glenn Abello
 Lois Adams ★
 Mr. & Mrs. John B. Adams ★
 Mr. & Mrs. Theodore C. Aepli ■
 Mrs. Susan Aggarwal
 Mr. & Mrs. John C.T. Alexander ■
 Mr. & Mrs. Page Allinson ★
 Mr. & Mrs. Vincent Arena, Sr. ■
 Mrs. Carol LaVon Arms ●
 Mrs. Richard Armstrong
 Mrs. Barbara Arning
 Gilbert & Susan Ashley †
 Dr. Hugo Geerts &
 Mrs. Michele Asselman ■
 Ms. Kristina L. Austlid ●
 Mrs. Janine Avis
 Susan Ayres †
 Mr. & Mrs. Walter P. Babich ★
 Ms. Sylva Baker
 Dr. & Mrs. Sam Barnett
 Jane A. Barth
 Mr. Richard Bauman
 Ms. Janet Bauman ■
 Mr. & Mrs. George R. Bennyhoff †
 Dr. Richard Berman
 Dr. Rob Bierregaard
 Mr. Hank Bisbee †
 Dr. Marion Blank ●
 Nancy Bleakley
 Reverend Robert K. Bohm
 Mr. John Borneman
 Karl Brachwitz
 Susan Bradley
 Dr. Bruce Braverman †

Ms. Susan Brede †
 Nancy E. Breitling †
 Ruth Mooney & James Brennan †
 Ms. Kathy Bright
 Dr. Klara & Mr. Terry Britt †
 Ms. Jeannette Brockman
 Carlene Brod
 Mr. Dylan Broderick
 Ms. Joan Brodhead
 Renate & Dale Brookins
 Michael & Lois Brooks †
 Mr. Geoffrey Brooks
 Brouse Nursery ★
 Mr. Robert C. Brown
 Ms. Joyce Serwalt Brown
 Mr. Robert Bruner
 Mr. & Mrs. William Bryant ★
 Joe & Louise Buchmann ■
 Dr. Glenn & Rev. Diane Burkland
 John Roxby & Felice Burstein †
 Ms. Roberta Burzynski
 Ms. Marybeth Bynon
 Ms. Amy Calhoun
 Mrs. Susan S. Carney ●
 Don & Eleanor Carroll ●
 Dr. John S. Carson ●
 Mrs. Pat Carson ★
 Mrs. Louise Carter ★
 Ms. Christine Casey
 John & Diana Cassels
 Mr. & Mrs. Thomas Chapin †
 Suzanne & Adam Ciongoli
 Ms. Linda Clark †
 Ms. Patricia Clark †
 Ms. Nicola Clarke
 Mindy Clearfield †
 Club of Little Gardens
 of Malvern ■
 Mr. Lloyd Cole
 William Comfort †
 Conlin's Copy Center ●
 Mr. and Mrs. Craig Conover
 Conscious Creations
 Mr. & Mrs. Terry Cook ■
 Mrs. Marjory Dewitt Cooper †
 Stephen & Sandra Cooper ■
 Ms. Gladys Corrodi
 Mr. Charles Crawford
 Mr. Kevin Cronin
 Mr. Richard Crosley
 Dr. & Mrs. Paul Cryan
 Ms. Mary Anne D'Agostino
 Mrs. Donna Daly
 Dr. & Mrs. James Dannenberg †
 Mrs. Ruth N. Davis †
 Dr. Christine DeBouck †
 Deer Run Daylily Gardens †
 Mr. Fred Dell Angelo ●
 Mr. & Mrs. F. William Dennis ●
 Mrs. Lynne d'Entremont
 Ms. Diana DePaul
 Bonnie Dettore
 Ms. Anna Louise Detweiler †
 Mr. & Mrs. Jeff DeVuono
 Ms. Mary DiAddezio †
 Ronnie Dimino
 Ms. Amy L. Dinning ●
 Judith Distel
 Mr. Wayne Dixon
 Mr. Christopher E. Dougherty
 Lee & Bill Drinkwater
 Mark & Mary Lou Driver
 Mr. & Mrs. Joseph Ducceschi

Carol Dutil
 Mrs. Sue Dwyer
 Mr. Stephen L. Eberly ■
 Mr. & Mrs. John E. Edinger ●
 Mr. David E. Edwards ●
 Mrs. Peggy Egerton ■
 Ms. Tara Brennan Eisenhower
 Dr. Barbara Elliot †
 Robert Friebe & Judith Ellis †
 Ms. Susan Engard
 Alan & Ellen Epps ■
 Barbara & David Erskine
 Ms. Eleanor Erskine ●
 Ms. M.G. Ewing †
 Ms. Debra Falkenberg
 Alice Fisher
 Dr. Forrest Fisher ★
 Mrs. Pearl Fong ●
 Ms. Carin Ford
 Dodi Fordham ■
 Betsy & Howard Friend †
 Ms. Janice Frohner
 Mr. George Funk †
 Christine Gaeto
 Helen Gallagher †
 Janet Gambardella †
 Ms. Stephanie Gamber
 Paul & Claudia Gard †
 Mrs. Jane Gardner
 Mr. Sylvan Garfinkle ●
 Estelle Brand & Rob Gerritsen
 Donna Gervais
 Thomas L. & Ellen C. Gilbert ●
 Mr. Edward Gilhool ■
 Ms. Mary Gilman
 Marilyn & Mike Gilpin
 Stephen Green & Michael Godley
 Ms. Susan Gold †
 Claire Goldenberg †
 Mr. & Mrs. Edward Goldstein
 Ms. Deirdre Gordon
 Mr. & Mrs. Allen L. Greenough ■
 Mr. & Mrs. Andrew Grossman †
 Mr. Antonio Guerra
 Ms. Dalya Guris
 Mrs. Caryn Haag †
 Ms. Gwynne Hagee †
 Mr. William F. Hahn ■
 Elaine Halberstadt
 Marcia Hamilton
 Mr. & Mrs. Albert Hampson ★
 Ms. Jeanne P. Hancock †
 Ms. Elizabeth Haney
 Mr. Wick Hannan
 Mrs. Pamela Harrison
 Cindy Harrity †
 Mrs. Janet T. Harvey †
 Ms. Ruth Hathaway
 Mrs. Deborah Havrilla
 Mr. Harry Hayman, III
 Mr. & Mrs. Peter Heaton ★
 Ms. Charlotte Hedlund
 Dan & Pam Heering
 Virginia & Steve Hendrickson †
 Mrs. Ann Hermans †
 Mrs. Elaine Hershman
 Ms. Holly Heyser
 Mrs. Eleanor Huff &
 Mr. Thomas Hickey ●
 Mr. Peter Hickman
 Hilda & Ros Hicks
 Nancy Higgins †
 Mrs. Donna Hilborn

Mrs. Ellin Hlebig †
 Mrs. Linda Hoade †
 Mrs. Barbara Holt ■
 Ms. Tracy Horter
 Margery Howe
 Mr. & Mrs. Joseph F. Huber ■
 Mrs. Ana Hudson
 Mr. Jason Huffner
 Grace & Tom Hughes †
 Dean & Joan Hurst ●
 Ms. Laura Hutelmeyer
 Dr. David Inman
 Ms. Donna Inners
 Bridget W. Irons ●
 Ms. Marsha Irvin
 Ms. Karen D. Janney
 Sally Jarvis †
 Ms. Barbara L. Jones ●
 Mr. Jose Juico †
 Dorothea Kane
 Lucy Karlsson
 Dr. Frederic H. Kauffman †
 Valerie Kitchen & Richard Keenan
 Mrs. Grace Keffer †
 Mr. Will Keller ■
 Ms. Barbara Kelly
 Beth L. Kempf †
 Dr. & Mrs. Keith Kennedy
 Ms. Suzanne Keraten
 Mrs. Sally L. Kerns
 Mr. Greg Kleiber
 Doug Kligahm & Sarah Ahmann ●
 Mr. Howard R. Kline ★
 Estelle Kluff
 Ms. Janice Knepper ■
 Ms. Faith Kortrey †
 Ms. Marie Lambeck †
 Mr. & Mrs. Richard B. Lander ■
 Mrs. Patricia R. Lander †
 Ms. Carol Landi
 Paul Macdonald & Lucille Larkin
 Mr. & Mrs. Jack F. Latu †
 Ms. Victoria Laubach †
 Louise Ledwith
 Dr. Dennis P. Leeper †
 Ms. Joanne LeGar
 Mrs. Frances Legg ■
 Mr. Ronald Lerch
 Ms. Judith Lerch
 Ginny Levy
 Ms. Judith Lewis
 Ms. Lynne Rubin LeWitt
 Lori Lighton
 Mrs. George J. Lincoln ■
 Linda's Country Cleaners
 Ms. Linda Lipschutz †
 Mrs. Linda Litwin †
 Amanda G. Lofink †
 Mrs. Maureen Lok †
 Carolyn Luskin
 Dr. Jayne Lytle †
 The MacKenzies
 Maria MacWilliams & Mark Chiu
 Joe & Laura Mager
 Mr. Karl Malessa ●
 Fred & Joyce Malott †
 Mrs. Lois Mamourian †
 Mr. & Mrs. Ronald Marburger ■
 Dr. Carolyn Marchitell
 Mr. & Mrs. Norbert Markert †
 Mr. & Mrs. Alvan Markle, IV ■
 Mr. Mark D. Marotta
 Ms. Jean Marshall

Mr. & Mrs. Ted Mason ■
 Mr. & Mrs. Regan C. Matus ■
 Ms. Elizabeth McAleer +
 Elizabeth & Dennis McAndrews
 Jim & Jeri McCue +
 Mrs. Joyce A. McCullough ■
 Ms. Barbara McDonald
 Ms. Brooke McInnes
 Ms. Sandra L. McLean ●
 Mr. & Mrs. David B. McMullin
 Pamela P. McMullin ■
 Mrs. Missy McQuiston +
 Ms. Holly Merker
 Amy Miller +
 Harvey & Pat Miller +
 Ms. Beverly C. Miller
 Stephanie Miller +
 Michael Martin Mills ■
 Ms. Linda Mills +
 Mr. & Mrs. George F. Mohr ●
 Ms. Judy Moneta
 Ms. Jane Moore +
 Mr. & Mrs. Tucker Moorshead ■
 Page Morahan
 Mr. Bill Morehouse
 Ms. Deborah Morley
 Nancy Gray Morris +
 Mr. Chris Moyer ■
 Mrs. Carol Ann Moyer
 Mr. Michael Mudry ●
 Mr. & Mrs. Gerard P. Mullane +
 Mr. Peter Murphy, IV ■
 Barbara Murray
 Mr. & Mrs. Frank Murray, Jr ■
 Jorie & Kerwin Nailor +
 Ms. Lori Naser
 Drs. John & Lynne Neefe ●
 Ms. Gail Neiman
 Ms. Pamela Nelson ★
 Harold & Diane Newell ■
 Ms. Laurie Nishimura &
 Mr. Robert Price ●
 Mr. & Mrs. Roberto Nogales +
 Mr. & Mrs. Brian Noll
 Mrs. Susan Norris +
 Norristown Garden Club +
 Northeast Native Perennials
 Mrs. Pamela Oakes
 Octoraro Farm ■
 Charles Odenweller +
 Mr. & Mrs. Clement O'Donnell
 Mr. Russel Oister
 Mr. James Oswald +
 Mr. & Mrs. Paul Paluba +
 Ms. Ceilia Paolantonio
 Amy & Joe Parente
 Connie Partridge
 Mrs. Meredith Patterson
 Mrs. Elise Payne +
 Mr. & Mrs. Gardiner P. Pearson +
 Dr. & Mrs. Cliff H. Pemberton +
 Anne Peniazzer
 Ms. Lenore C. Perrott ■
 Mrs. Ruth Pinkham ■
 Mr. & Mrs. Eugene H. Poppel ●
 Kerstin Potter +
 Mrs. Laura Pratt
 Mr. & Mrs. Paul Prestia ■
 Mr. Timothy E. Price
 Patricia & John Putnam
 Mr. Gerald A. Quammen +
 Jerilynn Radcliffe
 Dr. Denise Ratterman

Mr. & Mrs. Hugh Ravenscroft ■
 Ms. Rebecca Rebalsky
 Elaine & Mark Reber
 Ms. Deborah Reeder
 Andrena Reese +
 Sabine Rehm ■
 Mr. Greg Reif
 Mr. Harry Richards ■
 Grace Richter
 Elizabeth Rigg
 Mr. & Mrs. William Ristey ●
 Lucretia Robbins +
 Robert & Kate Robinson
 Mr. & Mrs. George Roebas +
 Mr. & Mrs. Gil Rogers
 Mrs. Barbara Rogers
 Mrs. Tracy Rogusky
 Mr. & Mrs. Richard Rood ★
 Mrs. Karen Rubert
 Mr. & Mrs. James E. Rush +
 Mrs. Leslie D. Rush
 Ms. Molly B. Ruzicka
 Mrs. Vera Newmann Sachs
 Mr. & Mrs. Kenneth Saler ●
 Ms. Kathleen Salisbury
 Mr. & Ms. James H. Sanborn ●
 Mrs. Monique Sarkessian
 Janine Scaff
 Mrs. Carol H. Schmidt
 Bruce & Karen Schock
 Mr. Kurt Schuhl
 Mrs. Julie S. Schwartz +
 Ms. Mary Presley Schwinn
 Valerie K. Seeds
 Ms. F. Grace Seiple
 Robert & Nina Selsor ■
 Mr. William L. Serrill
 Con Shields & Peg Shields +
 Ms. Mary Shiffer +
 Mr. & Mrs. James R. Sholder ★
 Dr. Bambi & Jay Siegfried
 Dr. Susmita Sil
 Mr. & Mrs. Jack Siler
 Mrs. Ellen Simek +
 Mr. & Mrs. John A. Simkiss, Jr. ■
 Mary Beth Simmons
 Ms. Leslie Simon
 Fred Simpson +
 Ms. Anne W. Sims ★
 Stephen & Cynthia Sinclair ■
 Denise Sjoreen
 Heidi Blair Smith
 Mrs. Christine Smith
 Ms. Susan Smolens ■
 Ms. Pamela Smyth
 Mr. & Mrs. Michael Snyder ■
 Mrs. Rebecca Drury Sorlien
 Mr. & Mrs. Jack J. Sosiak ●
 Jonathan Mossman &
 Linda Spickler +
 Mrs. Julia Sponseller
 Dolores Sprague +
 Dr. & Mrs. Walter Stamper ●
 Helen & Craig Standen
 Mr. & Mrs. Don Standhardt ●
 Ms. Ellen M. Steele ●
 Mrs. Sandra Stefanic
 Mrs. Gloria Steinmeyer +
 Mrs. JoAnn Stephens
 Ms. Marian Stevens ●
 Mr. & Mrs. Graham Stewart +
 Patty Stormer
 Mary Stromquist

Mrs. Paula Struble
 Mrs. Barbara B. Supplee ■
 Ms. Carolyn Swatsler ■
 Mr. Chris Swisher
 Mrs. Mary Frances Szpila
 Mr. Frederick Tennille
 Herbert Thal ●
 Jocelyn Thayer ●
 Mr. Ronald Thoman ●
 Barbara Thomas
 Mr. & Mrs. Thomas F.
 Thomas, Jr. +
 Ms. Barbara Thomas ■
 Mr. & Mrs. Roger Thorne
 Jean Thorpe
 Chris Tidmore
 The Toates Family
 Mr. Lindsay Andrew Tobias +
 Susan Townend +
 Mrs. Francey Trenham
 Nancy Trexler +
 Mr. Bradley Trout
 Mr. Edward Tryon
 Turks Head Landscape Service ●
 Lee & William Urias +
 Mrs. Karen Vadner ■
 Martha Van Artsdalen
 Mrs. Linda VanHorn
 Dr. & Mrs. Jerry Vernick
 Ms. Helen Wagner
 Mrs. Anita Walker
 Ms. M.J. Wallace
 Mr. & Mrs. Donald Wanderer ■
 Elizabeth Ward
 Gail Warner-Lidondici
 Joan & Reid Warren ●
 Mr. & Mrs. Brian Warren ■
 Mary Jane Washburn
 Mr. & Mrs. Anthony Waterer, III
 John & Corinne Weaber +
 Mr. Samuel C. Webb
 David & Judith Weiner +
 Ms. Terry Welford ★
 Mrs. Patricia Wendel +
 Mr. John H. Wenzel +
 Susanne H. Werner
 Bruce & Alix West +
 Mr. Bill West
 Ellen Wheat +
 Ms. Jennifer Whip
 Dr. Leah Whipple
 Mr. & Mrs. Robert Wingerter
 Mr. Timothy Wisecarver ■
 Ken & Mara Wolfgang +
 Dr. Audrey V. Womack +
 Ms. Patricia Wood ■
 Nancy & Donald Wood +
 Mr. & Mrs. Allan Woolford ■
 Kim Wright +
 Mr. Ed Wuensch
 Ms. Marjorie Wuestner
 Ms. Jun Ye
 Mr. Brooke Yeager
 Shelley Young +
 Robert Hooper & Glenda Yu +
 Mrs. Mary Yurchenco ●
 Mrs. Angela Zager
 Ms. Carla J. Zambelli
 Mr. Len Zangwill
 Jean G. Zeien ■
 David & Nora Zullo

Matching Companies

Benevity Community Impact Fund
 GE Foundation
 GlaxoSmithKline Foundation
 Johnson & Johnson Family of
 Companies
 Merck Partnership of Giving
 Merck Foundation
 Pfizer Foundation Matching
 Gift Program
 TransUnion
 Vanguard Group Foundation
 Voya Foundation

Honorary Gifts

Katherine Bennett
 Diana Calligan
 Dorrance Hamilton
 Dr. Michele Hawk
 Tom & Mary Ellen Heisey
 George Hollingshead
 Barbara Schaefer
 Dr. Harold Sweetman
 William T. Walsh Family
 Kurt Zeisler



Memorial Gifts

Jenny Arvan
 Anne Bahl
 Patricia J. Boehne, Ph.D.
 Thomas Byrne
 Christopher Egolf
 Margaret Fawcett
 Joan Gunnells
 Chester Kukula
 Frank & Martha Kunze
 Jean Lebheart
 Nancy Logan
 Liz Moorhead
 Libby Pethick
 Fran Roughley
 Elaine Reber
 Caroline Shauger
 George Stanek
 Amanda White
 Ruth Williams

In Kind Gifts

Barbara Geltosky
 Peter & Mary Kreek
 Mary Powell Lewis
 Edward Madara
 Mrs. Stanley Miller
 Liz Moench
 Jane Ruffin
 Robin Thomas

2017 Green Ribbon Native Plants®

continued from page 9

Obedient Plant (*Physostegia virginiana*)

The Obedient Plant or False Dragonhead is a very fun plant that has some unique qualities. First of all, the Obedient Plant's common name comes from the flowers' unique pliable nature. The flower heads can be pushed along the axis of the stem and will remain wherever they are moved. This makes the plant very useful for cut flowers or flower arrangements. This plant is a rhizomatous perennial that is a member of the mint family or *Lamiaceae*. A common characteristic of this family is a square stem. The flowers are a pale lilac with a tubular shape and snapdragon appearance that grow on terminal spikes. The flower spikes bloom



from the bottom to top from late June to September. *P. virginiana* has sharply-toothed, lanceolate leaves arranged in an opposite manner. The square stems can reach up to 4 feet but may fall over if the soils are too rich or it is not receiving enough sun. Beware this plant can spread rather aggressively either by seed or rhizomes. To prevent this a gardener can pull up the undesired shallow roots to keep the plant tamed.

Obedient Plant lives in a wide variety of habitats from open meadows to stream banks. It is native to much of North America from Quebec to Florida and even west to New Mexico. This plant is great because it can tolerate moist soils with poor drainage or soils on the drier end of the spectrum. The nectar of this plant is desirable to many species of butterflies and even attracts hummingbirds. Overall, this is an excellent plant and can really give a show in late summer or early fall, especially is used in a rain garden.



2017 Annual Plant Sale held at Jenkins Arboretum & Gardens

Opening-Night Party & Preview Plant Sale (attendance by reservation only, see below): Fri., May 5, 6-8 pm

Public Plant Sale: Sat., May 6, 9 am-3 pm and Sun., May 7, 11 am-3 pm

Rain or Shine • Cash and Checks accepted (no credit cards)

Opening-Night Party and Preview Plant Sale RSVP

The deadline for party reservations is April 22 for \$5 coupon off plant purchases.

_____ persons at \$30.00 per person: Total: \$ _____

Name: _____ Address: _____

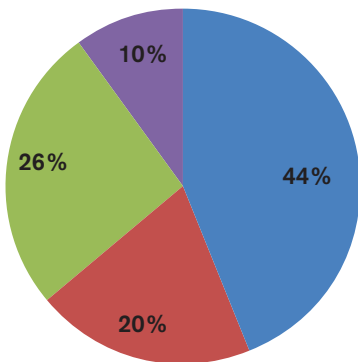
Send check, payable to **Valley Forge Chapter, American Rhododendron Society**, to P.O. Box 715, Southeastern, PA 19399. Reservations will be used in the drawing of door prizes Friday evening. Sale proceeds benefit horticultural, conservation, and educational efforts, including Jenkins Arboretum & Gardens.



2016 Annual Report: Statement of Financial Position

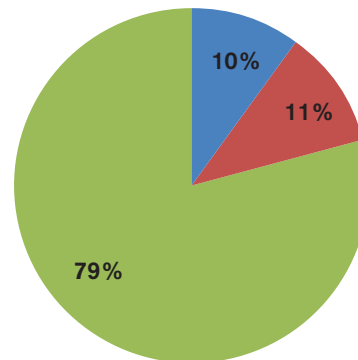
	2016	2015
Assets		
Current Assets		
Cash and cash equivalents	147,906	157,616
Contributions receivable	35,160	37,550
Total Current Assets	183,066	195,166
Non-Current Assets		
Contributions receivable	18,570	56,250
Investments: Marketable securities	11,909,294	10,563,852
Property, furniture and equipment	6,276,310	6,337,992
Total Non-Current Assets	18,204,174	16,958,094
Total Assets	\$18,387,240	\$17,153,260
Liabilities and Net Assets		
Current Liabilities		
Accounts payable	3,743	13,516
Accrued payroll and payroll taxes	4,738	3,910
Loan payable	12,124	-
Total Current Liabilities	20,605	17,426
Non-Current Liabilities		
Loan payable	36,124	-
Total Non-Current Liabilities	36,124	-
Total Liabilities	\$56,729	\$17,426
Net Assets		
Unrestricted	5,265,829	5,133,380
Unrestricted - Board Designated	124,256	58,371
Total Unrestricted	5,390,085	5,191,751
Temporarily restricted	101,137	126,114
Permanently restricted	12,839,289	11,817,969
Total Net Assets	\$18,330,511	\$17,135,834
Total Liabilities & Net Assets	\$18,387,240	\$17,153,260

Sources of Operating Funds

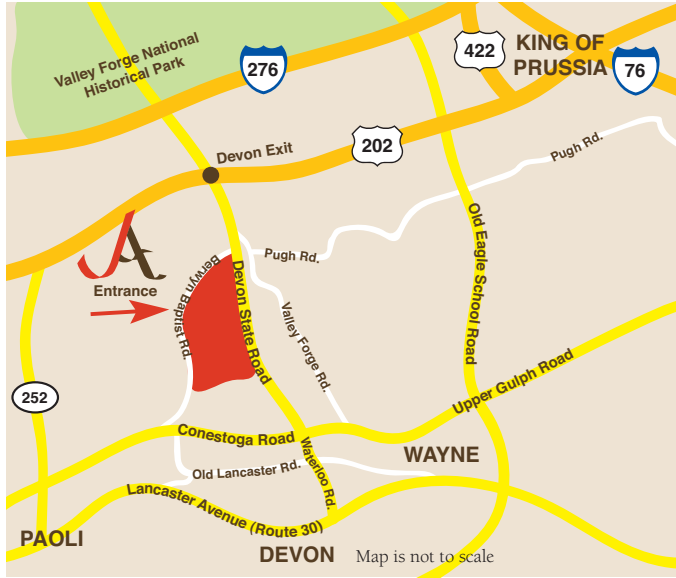


- \$272,776 - Contributions & Memberships
- \$203,707 - Plant Sales, Special Events & Other
- \$457,692 - Jenkins Arboretum Endowment
- \$109,466 - Temporarily Restricted Contributions & Grants
- \$1,043,641 Total**

Uses of Operating Funds



- \$107,272 - Management & Administration
- \$118,708 - Development
- \$833,680 - Horticulture & Educational Programs
- \$1,059,660 Total**



Jenkins Arboretum & Gardens is open daily from 8 a.m. to sunset, 7 days a week and 365 days a year. Admission is free.
John J. Willaman Education Center: 9 am-4 pm, daily.



Save the Date!

Join us on June 3 for our annual Spring Blooms party! Keep an eye on your mailbox for the invitation.

Thank you to our sponsors:

Barbacane Thornton
Brandywine Realty Trust
Eadeh Enterprises
Cordray Corporation
Crocodile Café - Kurt Linneman
1919 Investment Counsel - Monika Panger
Shreiner Tree Care - Steve Shreiner
Urban Engineers - Bill Thomsen
Pennsylvania Trust Company - Cole Vastine
Chanticleer - A Pleasure Garden

Katherine & Pete Bennett
Jack & Janet Campbell - Devon Liberty
Al & Alice Doering
John & Nancy Fischer
Susan Gerrity - Allstate Insurance

Karla & Phil Herr
Linda K. Himmelberger, DMD - Devon Dental
Roberta & George Hollingshead
Howell Partners
Marge & Ed Kennedy
LeBeau Gardens - Susan LeBoutillier
Julie Leisenring
Jack & Susie Linnvill
Dr. Evamarie Malsch
Perc & Sally Moser
Ted & Anne Patterson
Perfect Setting
George & Lorraine Rubin
Ellen & Bradford Smith
Christine & Harold Sweetman
Elizabeth McGee Wood
Sally Wood

Sponsors as of March 10, 2017.
Please contact us at janet@jenkinsarboretum.org or 610-647-8870 if you are interested in becoming a Spring Blooms sponsor.

