

Published with Open Access at **Journal BiNET**

Vol. 25, Issue 02: 2098-2106

**Journal of Bioscience and Agriculture Research**Journal Home: [www.journalbinet.com/jbar-journal.html](http://www.journalbinet.com/jbar-journal.html)

## Biology of the cucurbit fruit fly, *Bactrocera cucurbitae* (Coq) on host bottle gourd, *Lagenaria siceraria*

**Tahmina Akter and Md. Mahmudul Hasan Sohel**

Department of Entomology, Sher-e-Bangla Agricultural University, Dhaka-1207, Bangladesh.

✉ For any information: [tahmina\\_sauento@yahoo.com](mailto:tahmina_sauento@yahoo.com) (Akter, T)

Article received: 14.08.2020; Revised: 09.09.2020; First published online: 30 September 2020.

### ABSTRACT

We investigated the biology of the cucurbit fruit fly, *Bactrocera cucurbitae* (Coq) on bottle gourd, *Lagenaria siceraria*, using variety 'BARI-Lau 1'. The mean incubation period, larval (1<sup>st</sup>, 2<sup>nd</sup> and 3<sup>rd</sup> instars), pre-pupal, pupal and total developmental periods of *B. cucurbitae* were  $1.69 \pm 0.28$ , ( $1.72 \pm 0.33$ ,  $1.41 \pm 0.31$ ,  $2.31 \pm 0.51$ ),  $0.74 \pm 0.28$ ,  $9.2 \pm 0.78$  and  $36 \pm 1.69$  days, respectively. The mean adult longevity, with food and without food was  $14.1 \pm 1.28$  and  $5.0 \pm 0.81$  days, respectively. The lengths of all three larval instars were  $1.1 \pm 0.9$ ,  $3.03 \pm 0.95$  and  $6.42 \pm 0.90$  mm, and the widths were  $0.22 \pm 0.11$ ,  $1.12 \pm 0.01$  and  $2.13 \pm 0.20$  mm, respectively. The length and width of the pre-pupa and the pupa were  $5.86 \pm 0.48$ ,  $5.68 \pm 0.26$  mm and  $1.94 \pm 0.23$ ,  $2.39 \pm 0.20$  mm respectively. The length of male and female were  $6.61 \pm 0.59$  and  $8.28 \pm 0.52$  mm. The widths of males and females with wingspan were  $10.97 \pm 0.43$  and  $13.02 \pm 1.28$  mm respectively. The incidence of *B. cucurbitae* as maggot population in bottle gourd was higher in January during the study period from December 2018 to March 2019.

**Key Words:** Biology, Cucurbit fruit fly, *B. cucurbitae* and Bottle gourd.

**Cite Article:** Akter, T. and Sohel, M. M. H. (2020). Biology of the cucurbit fruit fly, *Bactrocera cucurbitae* (Coq) on host bottle gourd, *Lagenaria siceraria*. Journal of Bioscience and Agriculture Research, 25(02), 2098-2106.

**Crossref:** <https://doi.org/10.18801/jbar.250220.256>



Article distributed under terms of a Creative Common Attribution 4.0 International License.

### I. Introduction

Vegetables are accessible source of vitamins and minerals which are essential for maintaining sound health. Bangladesh has a serious deficiency in vegetables. The daily requirement of vegetables for a full grown person is 285 gm (Ramphall and Gill, 1990). But in Bangladesh, the percept consumption of vegetables is only 50 gm per day, which is the lowest among the countries of south and south East Asia (Rekhi, 1997). Cucurbitaceous vegetables play an important role to supplement this shortage during the lag period (Rashid, 1993). In Bangladesh, vegetables are grown in 2.63 percent of cultivable land (BBS, 2018). According to the Food and Agriculture Organization (FAO), Bangladesh holds the third position in the world for vegetable production (FAO, 2017).

Bangladesh produced 103 thousand tons of bottle gourds in the winter season and 77 thousand in the summer season of 2006-2007 (BBS, 2010). Bottle gourd is primarily a winter vegetable but now a

2098

days it is available also in summer. Now bottle gourd is grown round the year. Unfortunately, bottle gourds are infested by a number of insect pests, which are considered to be the significant obstacles for its economic production. Among them, cucurbit fruit fly and red pumpkin beetle are the major pests responsible for considerable damage of cucurbits (Butani and Jotwai, 1984).

The fruit fly, *Bactrocera cucurbitae* (Coq.) (Diptera: Tephritidae) is one of the most serious pests of cucurbits in Bangladesh (Alam, 1969; Akhtaruzzaman et al., 1999 and 2000). This pest is also known as melon fly and sometimes as a cucurbit fruit fly. The fruit fly attacks the ultimate economic part, i.e. fruits of the crop that alone can inflict yield loss in different cucurbitaceous vegetables ranging from 30-100% depending upon cucurbit species and the season (Dhillon et al., 2005). It also poses major a threat to global trade, since many countries have invoked restrictions to minimize the risk of establishment of exotic species. The damage caused by fruit fly is the most serious in melon and this may be up to 100 percent. Other cucurbitaceous fruits may also be infested upto 50 percent (Atwal, 1993). Yield losses due to fruit infestation vary from 19 to 70 percent in different cucurbits (Karim, 1995; Kabir et al., 1992). Shah et al. (1984) observed the symptom of infestation as the formation of brown resinous deposit on the attracted fruits. The female fly drums on the skins of young fruits by her oviposit and sometimes on the young leaves or stems of the host plants and make punctures for laying eggs (Chaudhary et al., 2007). Afterward, fruit juice oozes out which transforms into resinous brown deposit. After hatching in the fruit, the larvae feed into pulpy tissue and make tunnels in fruits and cause direct damage. They also damage the fruits indirectly by contaminating with frass and accelerated rotting of fruits by a pathogenic infection. Infested fruits if not rotten, become deformed and hardly which make it unfit for consumption. In Bangladesh where the production of vegetables is much below the requirements, the damage due to cucurbit fruit flies is undesirable. It is therefore, extremely important to devise means to reduce the extent of damage due to fruit flies without affecting the agroecosystem. Given the above facts, the main focus of this research work is lying in the following specific objectives: To study the different stages of cucurbits fruit fly, *B. cucurbitae* on host bottle gourd, *Lagenaria siceraria* which help to take an environmentally safe control measure in cucurbit crops.

## II. Materials and Methods

The investigation was being undertaken in the laboratory at the Department of Entomology, Sher-e-Bangladesh Agricultural University, Dhaka-1207 after fruiting of the bottle gourd in the experimental plot from December 2018 to March 2019, on the biology of the cucurbit fruit fly, *B. cucurbitae*. The details of the experiment including the rearing of the test insects are furnished below:

### Collection of eggs for the study of biology

The infested fruits of bottle gourd (Plate 01) just after egg deposited by cucurbit fruit fly collected from the field and marked egg deposited area on bottle gourd, then excavating the infested fruit below oviposition puncture from marked egg deposited area of bottle gourd and observed under a microscope for detected eggs of cucurbit fruit fly. After detection eggs were collected and transferred in the petridish (2 cm ht. × 10 cm dia.) for hatching and data were recorded. After hatching the newly hatched larvae were transferred in another Petri dishes containing pulp of the bottle gourd. At the time of intervals different instars of larva observed and data were recorded (Plate 02).

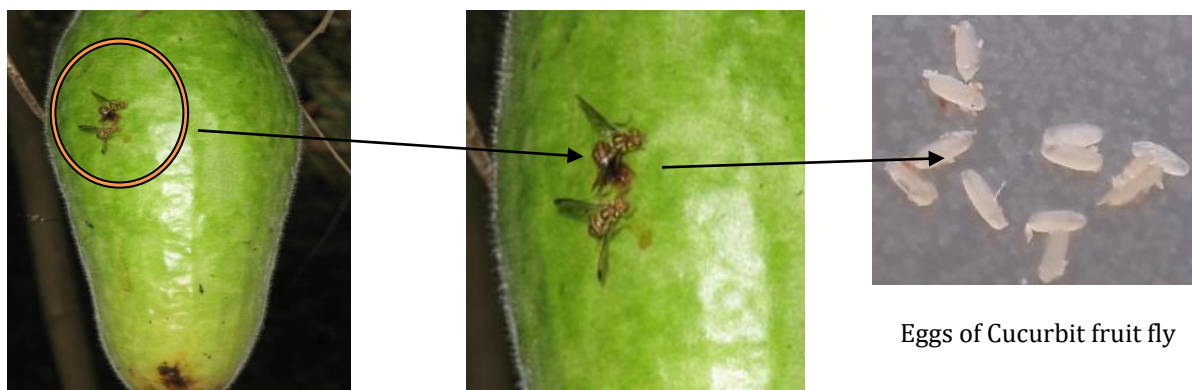
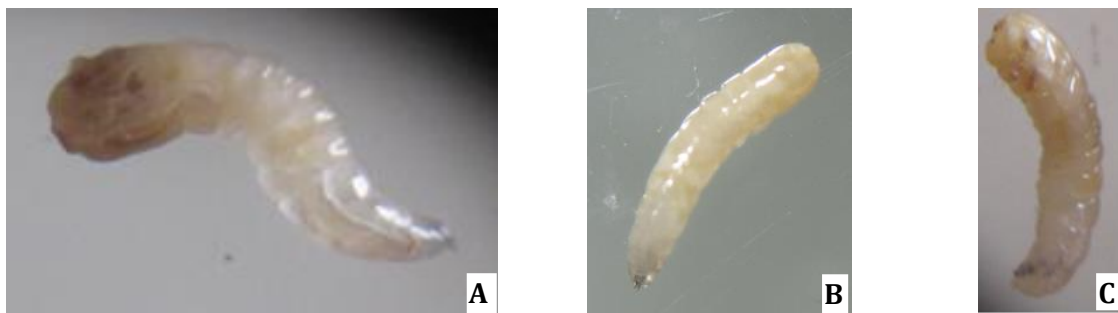


Plate 01. The infested fruits of bottle gourd (egg deposited by cucurbit fruit fly) in field



**Plate 02. Different larval instars of Cucurbit fruit fly, *B. cucurbitae* (A-1<sup>st</sup> instar, B- 2<sup>nd</sup> instar and C- 3<sup>rd</sup> instar)**

The morphological characteristics of the larvae/maggot and pupae were studied and recorded during the period of larval and pupal development, respectively. Different growth and development stages of cucurbit fruit fly such as incubation period, larval period, pupal period and adult longevity were recorded during the study. The incubation period was measured by the time interval between egg laying and larval hatching. The emerged adults of cucurbit fruit fly were kept in the rearing case with food (10% honey solution into watch glass) and without food till their death and the adult longevity were recorded. Total development period of both male and female were also recorded.

**Length and width of different stages of the insect:** The length and width of different stages of the insect were measured under a microscope and longer parts were measured with the help of slide calipers.

**Larval and pupal mortality:** The infested fruits of bottle gourd collected from the field kept in rearing case (1'×1'× 2'). Within the rearing case the infested fruits of bottle gourd were placed in a plastic tray. After ending of the larval period (when maggots come out from rotten fruit), the rotted fruits were removed. 50 maggots were kept in Petridis with soil and it replicated five times. After 5 days the soils were sieved to collect pupa and counted from each Petridis individually as well as larval mortality was recorded. For pupal mortality, 20 pupae were kept in a glass jar for adults emerged. After adults emerged data were recorded and determined pupal mortality. The incidence of cucurbit fruit fly: 10 (ten) infested fruits of bottle gourd were collected from the experimental field at the 5 days intervals. Numbers of maggots were counted from each infested fruits of bottle gourd. The incidence patterns of the cucurbit fruit fly as maggot population in bottle gourd were determined during the study period.

**Design of the experiment:** CRD (Completely randomized design) with 5 replications. Data were analyzed by MSTAT-C software for proper interpretation. Moreover, the graphical work was done using Microsoft Excel program.

### III. Results and Discussion

#### **Duration and morphometrics measurement of different life stages of the fruit fly, *Bactrocera cucurbitae* on Bottle gourd**

**Egg/oviposition period:** The egg hatching period was  $1.69 \pm 0.28$  and the data range was 1.0-2.0 (Table 01).

**Larvae/Maggot:** The larvae/Maggots were apodus. The matured maggots were cylindrical, pointed anteriorly or cephalic end blunt posteriorly. The larvae develop through three instars presented below:

**First instar:** The newly hatched maggot was white. Total  $1.72 \pm 0.33$  days required for first instar larvae (Table 01) and the data range was 1.4-2.0. The length and width of first instar maggot when reared on bottle gourd ranged from 0.49-0.65 mm and 0.20-0.25mm; mean value being  $1.1 \pm 0.9$  mm (Mean± S.D.) and  $0.22 \pm 0.11$ mm (Mean± S.D.) respectively.

**Second instar:** Total  $1.41 \pm 0.31$  days were required to complete second instar (Table 01). The length and width of second instar maggot when reared on bottle gourd data ranged from 3.0-4.0mm and 1.0-1.4mm; mean value being  $3.03 \pm 0.95$  mm (Mean  $\pm$  S.D.) and  $3.03 \pm 0.95$  mm (Mean  $\pm$  S.D.) respectively.

**Third instar:** Total  $2.31 \pm 0.51$  days were required to pass third instar maggot (Table 01). The maggot measured  $6.42 \pm 0.90$  mm in length and  $2.13 \pm 0.20$  mm in width when feeding on Bottle gourd fruit; the data range was 5.0-7.8 mm and 2.0-2.5 mm respectively (Table 02).

**Table 01. Duration of different life stages of Cucurbit fruit fly, *B. cucurbitae* on Bottle gourd**

Life stage	Duration in Days (Mean $\pm$ S.D.)	Data range
Egg period	$1.69 \pm 0.28$	1.0–2.0
Larval longevity		
1 <sup>st</sup> instar	$1.72 \pm 0.33$	1.4– 2.0
2 <sup>nd</sup> instar	$1.41 \pm 0.31$	1.0–2.0
3 <sup>rd</sup> instar	$2.31 \pm 0.51$	1.8– 2.7
Pre-pupal period	$0.74 \pm 0.28$	0.5–1.0
Pupal period	$9.2 \pm 0.78$	8.0–10
Adult longevity		
Without Food	$5.0 \pm 0.81$	4.0–6.0
With Food	$14.1 \pm 1.28$	12.0–15.0
Total developmental period (Egg to adult mortality)	$36 \pm 1.69$	33–37.7

**Pre-Pupal duration and morphometrics measurement:** 3<sup>rd</sup> instars of matured maggots try to leave the infested fruits and become quiescent before pupation. They become sluggish and stop feeding. At this stage the maggots contracted longitudinally and attained spiral form assuming pre-pupal stage. Total  $0.74 \pm 0.17$  days were required to pass pre-pupal period (Table 01). Length and width of the pre-pupa was varied from 5.3-6.7 mm and 1.7-2.5 mm; mean value being  $5.86 \pm 0.48$  mm (Mean  $\pm$  S.D.) and  $1.94 \pm 0.23$ mm (Mean  $\pm$  S.D.) respectively (Table 02).

**Pupal duration and morphometrics measurement:** Total  $9.2 \pm 0.78$  days were required to complete the pupal period (Table 01) and the data range was 8.0-10.0 mm. The pupa measured  $5.68 \pm 0.26$  mm (Mean  $\pm$  S.D.) in length and  $2.39 \pm 0.20$  mm (Mean  $\pm$  S.D.) in width; the data range was 5.2-6.0mm for length and 2.1-2.8 mm in width respectively (Table 02). Depending on temperature and the host, the pupal period may vary from 7 to 13 days (Hollingsworth et al., 1997). (Gupta and Verma, 1995) recorded that the pupal period varied from 7.7 to 9.4 days on bitter gourd, cucumber, and sponge gourd whereas (Koul and Bhagat, 1994); Khan et al., 1993 observed 6.5 to 21.8 days pupal duration on bottle gourd.

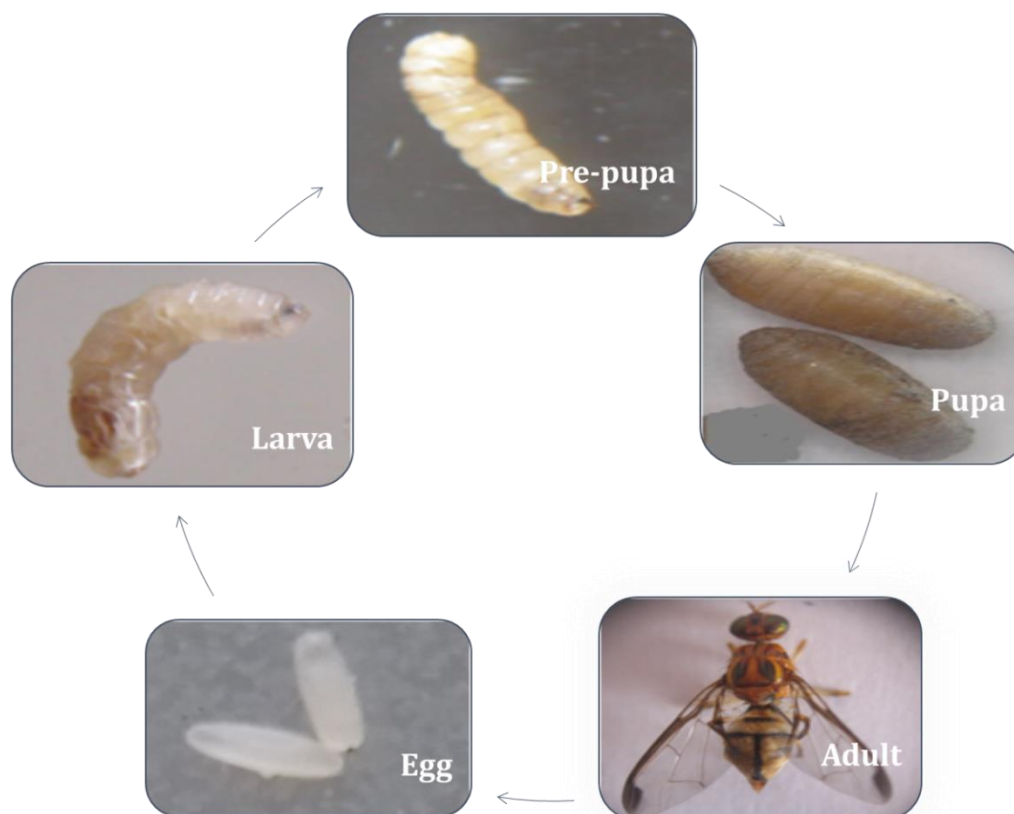
**Adult duration:** The adult longevity was  $5.0 \pm 0.81$  days (Mean  $\pm$  S.D.) in case of supplying food (10% honey solution) and the data range was 4.0-6.0 mm (Table 01) and when rearing without food the adult longevity was  $14.1 \pm 1.28$  (Mean  $\pm$  S.D.) days and the data range was 12.0-15.0 mm (Table 01).

**Morphometrics measurement of adult:** In adult male fruit fly abdomen was blunt, ovipositor became absent. They were also smaller in size than that of the females. When reared in bottle gourd, the length of male fruit fly was  $6.61 \pm 0.59$  mm (Mean  $\pm$  S.D.) and the data range was 5.8-7.5mm. The width of male with the wing span was  $10.97 \pm 0.43$  mm (Mean  $\pm$  S.D.) and the data range was 10.2-11.5 mm. (Table 02). In adult female fruit fly were easily detected by the presence of tapering abdomen extending into an ovipositor (Plate 03). They are comparatively larger than the males. The length and width with the wing expanse of the female adult were observed to vary from 11.5-15.0 mm; mean value being  $8.28 \pm 0.52$  mm (Mean  $\pm$  S.D.) and  $13.02 \pm 1.28$  (Mean  $\pm$  S.D.) respectively (Table 02).

The total development period (Egg to adult mortality) was  $36 \pm 1.69$  (Mean  $\pm$  S.D.) and the data range was 33.0 - 37.7mm (Table 01). The finding of the present study are in Corroboration with the earlier works of Lalla and Sinha (1959), Narayanan and Batta (1960), Patel (2007) and Laskar (2013). Minor deviations in Morphometrics may be attributed to the variations in host and environmental conditions.

**Table 02. Morphometrics measurement of different life stages of Cucurbit fruit fly, *B. cucurbitae* on Bottle gourd**

Life Stage	Size (mm)			
	Length (mm) (Mean± Std)	Data range	Width (mm) (Mean± Std)	Data range
Larval Instars				
1 <sup>st</sup> Instar	1.1± 0.9	1.0-1.2	0.22 ±0.11	0.20-0.25
2 <sup>nd</sup> Instar	3.03 ± 0.95	3.0-4.0	1.12 ± 0.01	1.0-1.4
3 <sup>rd</sup> Instar	6.42 ± 0.90	5.0-7.8	2.13 ± 0.20	2.0-2.5
Pre-pupal	5.86 ±0.48	5.3-6.7	1.94 ± 0.23	1.7-2.5
Pupal	5.68± 0.26	5.2-6.0	2.39±0.20	2.1-2.8
Adult			With wing span	
Male	6.61±0.59	5.8-7.5	10.97 ± 0.43	10.2-11.5
Female	8.28±0.52	8.0-9.0	13.02±1.28	11.5-15.0

**Plate 03. Life cycle of Cucurbit fruit fly (*B. cucurbitae*)**

**Larval mortality of Cucurbit fruit fly, *B. cucurbitae* during the study period:** During the larval development some natural mortality was found to observe. The larval mortality was mainly due to environmental factors and percent of larval mortality was ranged from 20 to 40% during the study period.

**Pupal mortality of Cucurbit fruit fly, *B. cucurbitae* during the study period:** Pupal mortality was recorded lower than the larval mortality (Figure 01). Most of the healthy pupa formed able to enclose into adult. However, a few numbers not able to enclose into adult which was occurred failure to emerge. Mortality of pupa was noted lower in bottle gourd which was ranged from 10 to 20% during the study period (Figure 01).

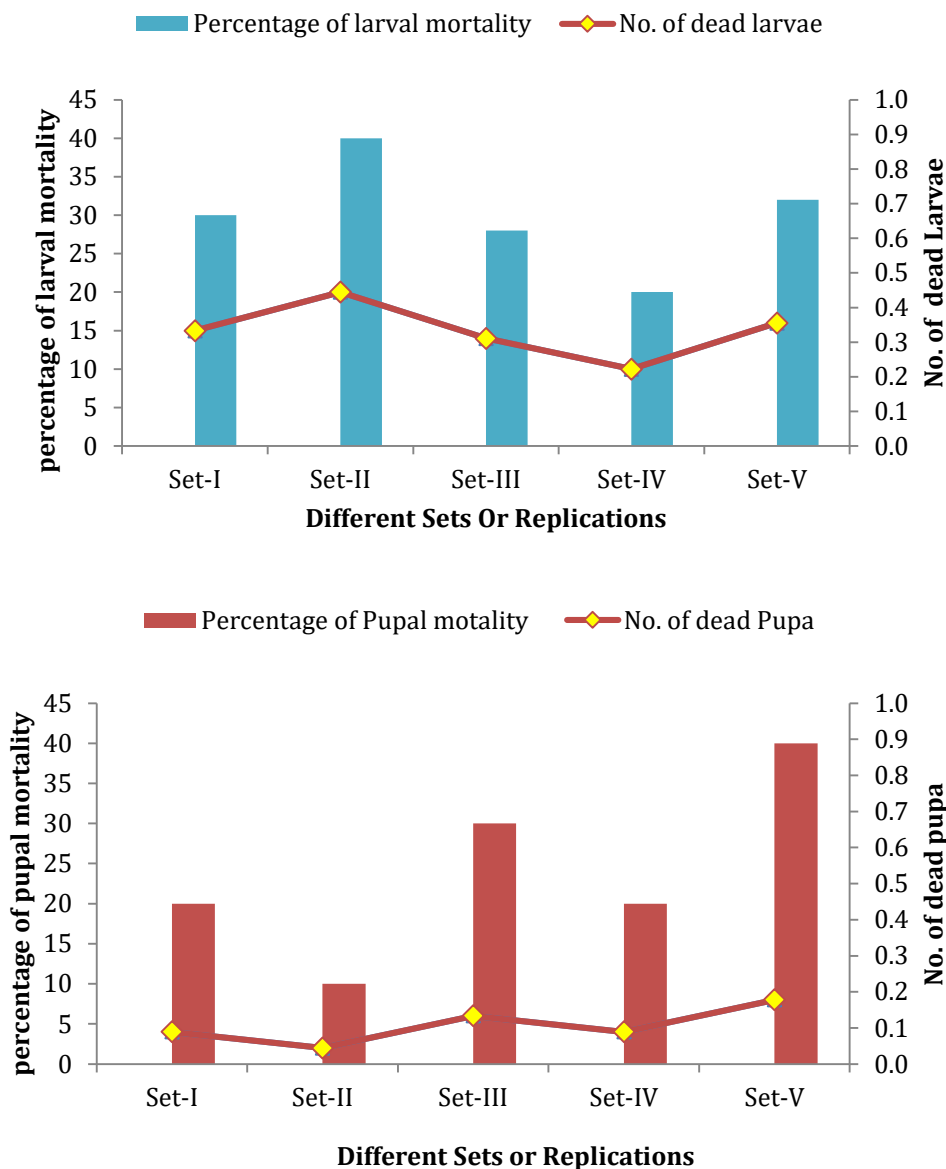


Figure 01. Larval and pupal mortality of *Bactrocera cucurbitae* during the study period

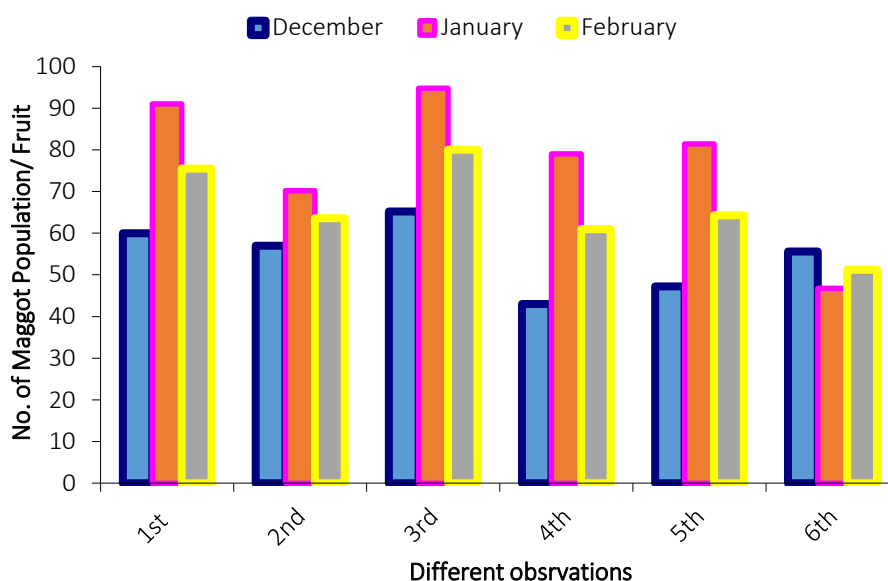
**Incidence of cucurbit fruit fly as maggot population in bottle gourd at the different month during the study period**

Cucurbit fruit fly, *B. cucurbitae* (Coq.), one of the most important pests of bottle gourd along with all members of family Cucurbitaceae occurred from of December 1<sup>st</sup> week to February last week during the study periods. Its infestation was recorded during first week of December and continued till the crop was finally harvested. High larval population (94.8 maggots/fruit) could be recorded from third observation (Each observation was done after 4- 5 days intervals) in January (Figure 02). Population of maggot was relatively low during the study period at the end of each month (December, January and February).

Among the different months, the highest maggot populations were observed from month of January, whereas the lowest maggot populations (43) were recorded from 4<sup>th</sup> observation in December. As a result, the order of incidence pattern of the cucurbit fruit fly as maggot population in bottle gourd at the different months during the study period in terms of number were January > February > December. However, population prevalence was of almost the same order as on each study month from different observations.

No such study was taken up from this region earlier. However, peak population of the pest had been reported to occur on bitter gourd from this region during summer followed by winter season (Banerji et al., 2005). Patnaik et al. (2004) showed that the peak population of the fly could be noted during

April-May, i.e., around 18<sup>th</sup> to 20<sup>th</sup> standard weeks on bitter gourd. Such infestation on little gourd could be recorded throughout the year starting from the month of February reaching peak during third week of March and with negligible infestation during December-January (Patel and Patel, 1996).



**Figure 02. Incidence pattern of cucurbit fruit fly as maggot population in bottle gourd at the different months during the study period**

#### IV. Conclusion

The cucurbit fruit fly, *Bactrocera cucurbitae* is one of the most serious insect pests of cucurbits vegetable. The fruit fly develops through egg, three instars, and pupa, pre-pupa and adult stages. The insect *B. cucurbitae* is more or less active throughout the study period but more active month of January. The present research work may be concluded that incidence of cucurbit fruit fly and infestation of bottle gourd by cucurbit fruit fly significantly varied among the months.

#### V. References

- [1]. Akhtaruzzaman, M., Alam, M. Z. and Sardar, M. A. (2000). Efficacy of different bait sprays for Suppressing fruit fly on cucumber. Bulletin of the Institute of the Tropical Agriculture, Kyushu University, 23, 15-26.
- [2]. Alam, M. Z. (1969). Insect pests of vegetables and their control in East Pakistan. ARI, Dacca Farm, Dacca- 1215, 144 p.
- [3]. Atwal, A. S. (1993). Agricultural Pests of India and South-East Asia. Plant Protection Department. Punjab Agricultural University, Ludhiana, India, pp. 251.
- [4]. Banerji, R. Sahoo, S. K. Das, S. K. and Jha, S. (2005). Studies on incidence of melon fly, *Bactrocera cucurbitae* (Coq.) in relation to weather parameters on bitter gourd in new alluvial zone of West Bengal. *J. of Entomol. Res.*, 29, 179-82.
- [5]. BBS (2018). Statistical Year Book of Bangladesh 2018. Bangladesh Bureau of Statistics (BBS). Planning Division, Ministry of Planning, Government of the People's Republic of Bangladesh, Dhaka, 148p
- [6]. BBS. (2010). Statistical Year Book of Bangladesh 2007. Bangladesh Bureau of Statistics (BBS). Planning Division, Ministry of Planning, Government of the People's Republic of Bangladesh, Dhaka, 154p
- [7]. Butani, D. K. and Jotwani, M. G. (1984). Insects in vegetables. Periodical Expert Book Agency. Vivek-vihar, Delhi, India, 69p.
- [8]. Chaudhary, F. K. and Patel, G. M. (2007). Biology of melon fly, *Bactrocera cucurbitae* (Coq.) on pumpkin. *Indian Journal of Entomology*, 69(2), 168-171.
- [9]. Dhillon, M. K., Naresh, J. S. and Sharma, N. K. (2005). Influence of physico-chemical traits of bitter gourd, *Momordica charantia* L. on larval density and resistance to melon fruit fly,

- Bactrocera cucurbitae* (Coquillett). Journal of Applied Entomology, 129, 393-399. <https://doi.org/10.1111/j.1439-0418.2005.00911.x>
- [10]. FAO (2017). Food Security and Agricultural Mitigation in Developing Countries: options for capturing Synergies. Rome Italy.
- [11]. Gupta, D. and Verma, A. K. (1995). Host specific demographic studies of the melon fruit fly, *Dacus cucurbitae* Coquillett (Diptera: Tephritidae). Journal of Insect Science, 8, 87-89.
- [12]. Hollingsworth, R., Vagalo, M. and Tsatsia, F. (1997). Biology of melon fly, with special reference to the Solomon Islands. In: Allwood AJ and Drew RAI editors. Management of fruit flies in the Pacific. *Proc. Australian Ind. Agric. Res.*, 76, 140-144.
- [13]. Kabir, S. M., Rahman, H. R. and Molla, M. A. S. (1992). Host plants of Dacinae fruit flies (Diptera: Tephritidae) of Bangladesh. *Bangladesh Journal of Entomology*, 1, 60-75.
- [14]. Karim, M. A. (1995). Management of insect pests of vegetables. In: M.L. Chandha, K. U. Ahmed, S. Shanmugasundaram and A. Quasem 1995. (eds.) vegetable crops
- [15]. Khan, L., Haq, M. U., Mohsin, A. U. and Inayat-Tullah, C. (1993). Biology and behavior of melon fruit fly, *Dacus cucurbitae* Coq. (Diptera: Tephritidae). Pakistan Journal of Zoology, 25, 203-208.
- [16]. Koul, V. K. and Bhagat, K. C. (1994). Biology of melon fruit fly, *Bactrocera (Dacus) cucurbitae* Coquillett (Diptera: Tephritidae) on bottle gourd. Pest Management and Economic Zoology, 2, 123-125.
- [17]. Lalla, B. S. and Sinha, S. N. (1959). On the biology of the melon fly, *Dacus cucurbitae* Coquillett (Diptera: Trypetidae). Science Culture, 25(2), 159-160.
- [18]. Laskar, N. (2013). Biology and biometrics of melon fruit fly, *Bactrocera cucurbitae* (Coq.) on bitter gourd, *Momordica charantia* L. and pumpkin, *Cucurbita pepo* L. Current Biotica, 7(1&2), 51-59
- [19]. Narayanan, E. S. and Batra, H. N. (1960). Fruit flies and Their Control Indian Council of Agricultural Research, New Delhi, p. 68.
- [20]. Patel, N. V. (2007). Biology of fruit fly *D. cucurbitae* Coq. on cucurbits and chemical on bittergourd. M.Sc. (Agri.) thesis submitted to the Gujarat Agricultural University, Sardarkrushinagar, pp-125.
- [21]. Patel, R. K. and Patel, C. B. (1996). Influence of weather parameters on incidence of fruit fly, *Dacus ciliatus* on little gourd. Indian Journal of Entomology, 58(3), 239-44.
- [22]. Patnaik, H. P. Sarangi, P. K. Mahapatra, P. (2004). Studies on the incidence of fruit flies and jassids on summer bitter gourd and their control. Orissa Journal of Horticulture, 32(2), 87-90.
- [23]. Ramphall and Gill, H. S. (1990). Demand and supply of vegetables and pulses in South Asia. In: Vegetable Research and Development in South Asia. S. shanmugasundaram (ed). Proe. Workshop held at Islamabad, Pakistan on 24-29 September, 1990. AVRDC Publication No: 90.331, AVRDC, Tainan, Taiwan.
- [24]. Rashid, M. (1993). Vegetables Science (Sabji Bighan) (in Bengali), Bangla Academy, Dhaka, pp. 33-254.
- [25]. Rekhi, S.S. (1997). Vegetable improvement and seed production. Key note paper presented in the National Seminar on March 3-4, at BARI, Joydebpur, Gazipur, Bangladesh.
- [26]. Shah, M. I., Batra, H. N. and Ranjhen, P. L. (1984). Notes on the biology of *Dacus* (Strumeta) *ferrugineus* Fab. and other fruit flies in the North-West Frontier Province. Indian Journal of Entomology, 10, 249-266.

#### HOW TO CITE THIS ARTICLE?

Crossref: <https://doi.org/10.18801/jbar.250220.256>

#### MLA

Akter, T. and Sohel, M. M. H. "Biology of the cucurbit fruit fly, *Bactrocera cucurbitae* (coq) on host bottle gourd, *Lagenaria siceraria*". Journal of Bioscience and Agriculture Research, 25(02), (2020): 2098-2106.

#### APA

Akter, T. and Sohel, M. M. H. (2020). Biology of the cucurbit fruit fly, *Bactrocera cucurbitae* (coq) on host bottle gourd, *Lagenaria siceraria*. Journal of Bioscience and Agriculture Research, 25(02), 2098-2106.



**Chicago**

Akter, T. and Sohel, M. M. H. "Biology of the cucurbit fruit fly, *Bactrocera cucurbitae* (coq) on host bottle gourd, *Lagenaria siceraria*". Journal of Bioscience and Agriculture Research, 25(02), (2020): 2098-2106.

**Harvard**

Akter, T. and Sohel, M. M. H. 2020. Biology of the cucurbit fruit fly, *Bactrocera cucurbitae* (coq) on host bottle gourd, *Lagenaria siceraria*. Journal of Bioscience and Agriculture Research, 25(02), pp. 2098-2106.

**Vancouver**

Akter, T and Sohel, MMH. Biology of the cucurbit fruit fly, *Bactrocera cucurbitae* (coq) on host bottle gourd, *Lagenaria siceraria*. Journal of Bioscience and Agriculture Research. 2020 September, 25(02): 2098-2106.

Access by Smart Phone

**Journal BiNET | Scientific Publication**

- ✓ Faster processing & peer review
- ✓ International editorial board
- ✓ 29 business days publication
- ✓ Greater audience readership
- ✓ Indexing & bibliographic integration
- ✓ Social sharing enabled

Submission email to [submit@journalbinet.com](mailto:submit@journalbinet.com)

[www.journalbinet.com/article-submission-form.html](http://www.journalbinet.com/article-submission-form.html)