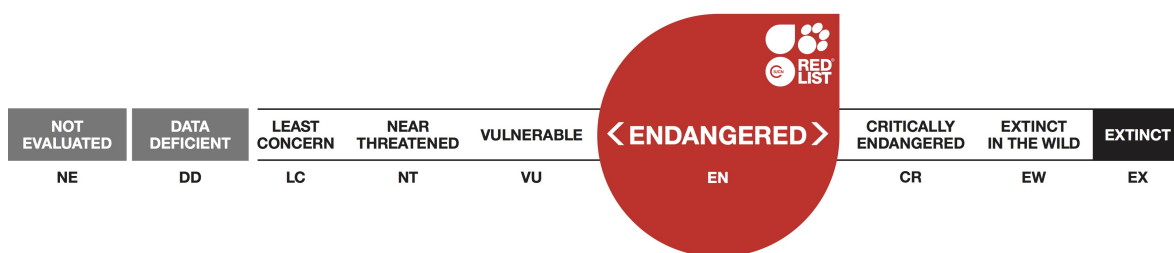


## *Darevskia clarkorum*, Clarks' Lizard

Assessment by: Boris Tuniyev, Natalia Ananjeva, Aram Agasyan, Nikolai Orlov,  
 and Sako Tuniyev



View on [www.iucnredlist.org](http://www.iucnredlist.org)

**Citation:** Boris Tuniyev, Natalia Ananjeva, Aram Agasyan, Nikolai Orlov, and Sako Tuniyev. 2009. *Darevskia clarkorum*. *The IUCN Red List of Threatened Species 2009*: e.T11117A3251827. <http://dx.doi.org/10.2305/IUCN.UK.2009.RLTS.T11117A3251827.en>

**Copyright:** © 2015 International Union for Conservation of Nature and Natural Resources

*Reproduction of this publication for educational or other non-commercial purposes is authorized without prior written permission from the copyright holder provided the source is fully acknowledged.*

*Reproduction of this publication for resale, reposting or other commercial purposes is prohibited without prior written permission from the copyright holder. For further details see [Terms of Use](#).*

*The IUCN Red List of Threatened Species™ is produced and managed by the [IUCN Global Species Programme](#), the [IUCN Species Survival Commission \(SSC\)](#) and [The IUCN Red List Partnership](#). The IUCN Red List Partners are: [BirdLife International](#); [Botanic Gardens Conservation International](#); [Conservation International](#); [Microsoft](#); [NatureServe](#); [Royal Botanic Gardens, Kew](#); [Sapienza University of Rome](#); [Texas A&M University](#); [Wildscreen](#); and [Zoological Society of London](#).*

*If you see any errors or have any questions or suggestions on what is shown in this document, please provide us with [feedback](#) so that we can correct or extend the information provided.*

## Taxonomy

Kingdom	Phylum	Class	Order	Family
Animalia	Chordata	Reptilia	Squamata	Lacertidae

**Taxon Name:** *Darevskia clarkorum* (Darevsky & Vedederja, 1977)

### Synonym(s):

- *Lacerta clarkorum*

### Common Name(s):

- English: Clarks' Lizard
- French: Lezard de Clarc

## Assessment Information

**Red List Category & Criteria:** Endangered B1ab(i,iii) [ver 3.1](#)

**Year Published:** 2009

**Date Assessed:** December 14, 2008

### Justification:

Listed as Endangered because its Extent of Occurrence is less than 5,000 km<sup>2</sup>, all individuals are in fewer than five locations, and there is continuing decline in the extent and quality of its habitat due to overgrazing.

### Previously Published Red List Assessments

1996 – Endangered (EN)

1994 – Rare (R)

## Geographic Range

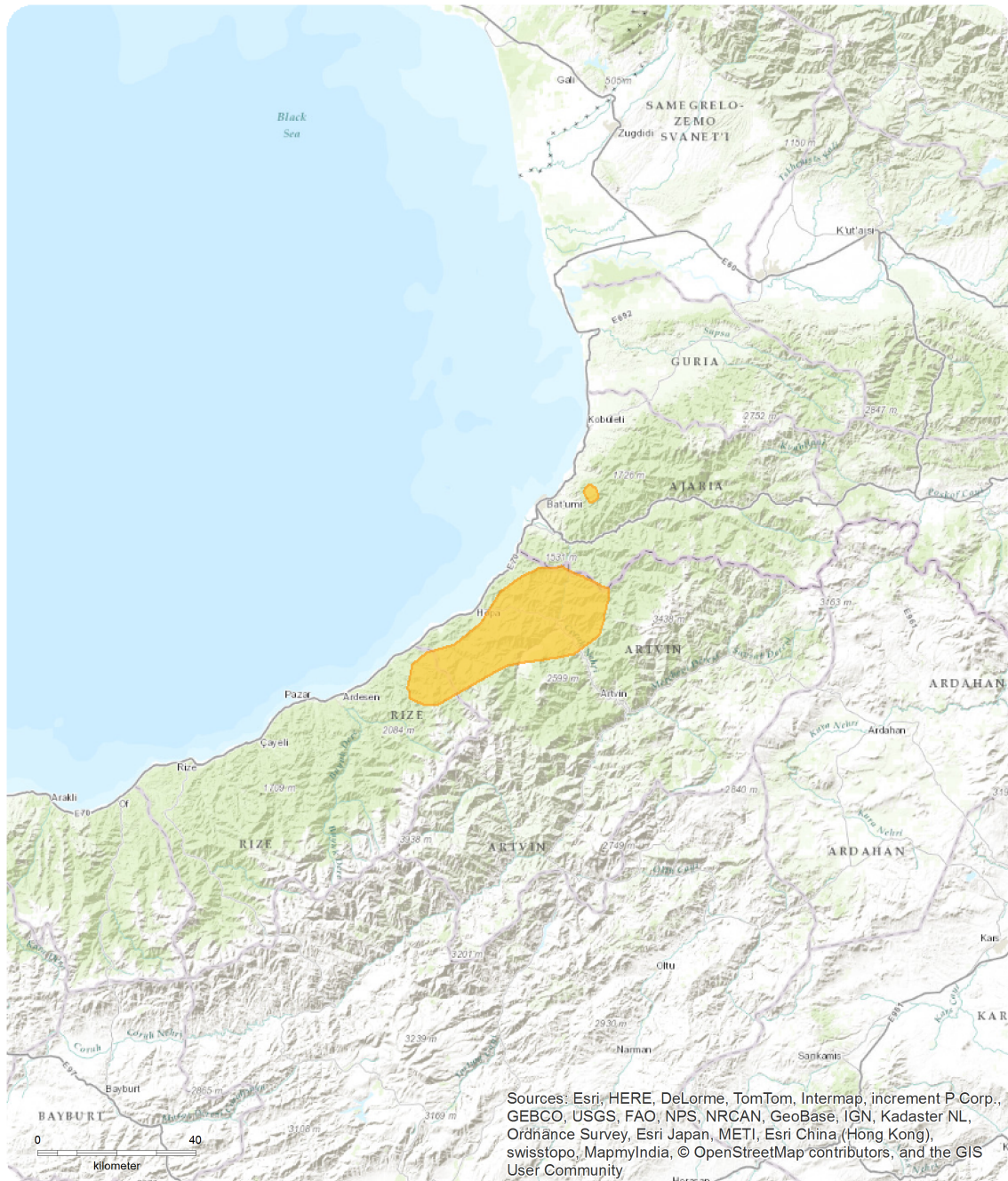
### Range Description:

This species is known from the Black Sea coastal region of Turkey (eastwards from Giresun Province to Hopa in Artvin Province) and Georgia (Adzharia), and is also present in Armenia (Baran and Atatur, 1998). The main distribution range of the species occupies the northern spurs of the East-Pontic mountains in the north-east of Turkey. A small isolated part of the distribution is within the western slopes of the mountain Mtirala in the vicinity of the town of Batumi in southwestern Ajaria (Georgia). It ranges from 1500 to 2200m asl.

### Country Occurrence:

**Native:** Georgia; Turkey

# Distribution Map

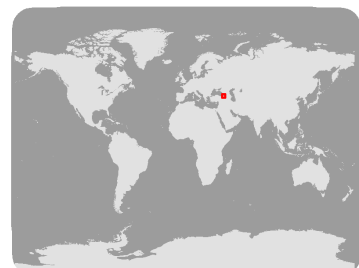


## *Darevskia clarkorum*

Range

■ Extant (resident)

Compiled by:  
IUCN (International Union for  
Conservation of Nature)



The boundaries and names shown and the designations used on this map do not imply any official endorsement, acceptance or opinion by IUCN.



## Population

This is a naturally very rare species.

**Current Population Trend:** Decreasing

## Habitat and Ecology (see Appendix for additional information)

Animals are found in damp and bushy areas close to streams, generally with large stones and rocks (Baran and Atatür, 1998). It can be encountered in mountains meadows with rocky outcrops, pine and talus slopes.

**Systems:** Terrestrial

## Threats (see Appendix for additional information)

This species is threatened by overgrazing of its habitat by domestic livestock (cattle and sheep).

## Conservation Actions (see Appendix for additional information)

This rare species is included into the Red Data Book of the USSR (1984) - category 3. It has been recorded from a protected area in Turkey, but it is not known if it is found within a protected area in Georgia. Further research is needed into the natural history, range and threats to this species. Habitat maintenance is needed in areas of overgrazing.

## Credits

**Assessor(s):** Boris Tuniyev, Natalia Ananjeva, Aram Agasyan, Nikolai Orlov, and Sako Tuniyev

**Reviewer(s):** Neil Cox and Helen Temple

## Bibliography

- Ananjeva, N. B., Borkin, L. Y., Darevsky, I. S. and Orlov, N. L. 1988. *Dictionary of animal names in five languages. Amphibians and Reptiles*. Russky Yazyk, Moscow.
- Ananjeva, N. B., Borkin, L. Y., Darevsky, I. S., Orlov, N. L. 1998. *Amphibii i presmykajushchiesya*. AFB, Moscow.
- Ananjeva, N. B., Orlov, N. L., Khalikov, R. G., Darevsky, I. S., Ryabov, S. A., Barabanov, A. V. 2004. *Atlas presmykajushchikhsya Severnoi Eurazii*. Zoologicheskij Institut RAN, Sanct-Petrburg.
- Bischoff, W. 1978. Beiträge zur Kenntnis der Echsen des Kaukasus. *Salamandra*: 178-202.
- Bischoff, W. 2000. Clarks Felseneidechse, *Lacerta clarkorum*, als Motiv auf türkischer Münze. *Elaphe*: 79-80.
- Darevsky, I. S. 1967. *Skal'nye yashcheritzi Kaukaza*. Nauka, Leningrad (Saint-Peterburg).
- Darevsky, I.S. and Vedmederja, W.I. 1977. A new species of Rock lizard, *Lacerta saxicola* Eversmann-Group from northeastern Turkey and adjoining regions of Adjaria. *Trudy Zool. Inst., 74, Gerp. Zborn, Leningrad*: 50-54.
- Franzen, M. 1991. Beobachtungen zur Phytophagen Ernährung von *Lacerta rudis* und *Lacerta clarkorum*. *Die Eidechse*: 22-23.
- Fu, J. and Murphy, R.W. 1997. Toward the phylogeny of caucasian rock lizards: implications from mitochondrial DNA gene sequences (Reptilia: Lacertidae). *Zoological Journal of the Linnean Society*: 463-477.
- IUCN. 2009. IUCN Red List of Threatened Species (ver. 2009.1). Available at: [www.iucnredlist.org](http://www.iucnredlist.org). (Accessed: 22 June 2009).
- Murphy, R.W., Fu, J., MacCulloch, R.D., Darevsky, I.S. and Kupriyanova, L.A. 2000. A fine line between sex and unisexuality: the phylogenetic constraints on parthenogenesis in lacertid lizards. *Zool. J. Linn. Soc.* 130: 527-549.
- Panner, T. 2001. Kurze Bemerkungen zur Haltung und Zucht von Clarks Felseidechse, *Darevskia clarkorum* (Darevsky & Vedmederja, 1977). *Die Eidechse*: 65-70.
- Schmidtler, J.F., Heckes, U., bischoff, W. and Franzen, M. 2002. Altitude-dependent character variation in rock lizards of the *Darevskia clarkorum* (Darevsky & Vedmederja 1977), *D. dryada* (Darevsky & Tuniyev 1997) complex: a case of climate parallel variation of pholidosis? (Reptilia: Squamata: Sauria: Lacertidae). *Faun. Abh. Mus. Tierk. Dresden*: 141-156.
- Sindaco, R. and Jeremčenko, V.K. 2008. *The Reptiles of the Western Palearctic. 1. Annotated Checklist and Distributional atlas of the turtles, crocodiles, amphisbaenians and lizards of Europe, North Africa, Middle East and Central Asia*. Edizioni Belvedere, Latina (Italy).
- Sindaco, R., Venchi, A., Carpaneto, G.M. and Bologna, M.A. 2000. The reptiles of Anatolia: a checklist and zoogeographical analysis. *Biogeographia* 21: 441-554.

## Citation

Boris Tuniyev, Natalia Ananjeva, Aram Agasyan, Nikolai Orlov, and Sako Tuniyev. 2009. *Darevskia clarkorum*. *The IUCN Red List of Threatened Species 2009*: e.T11117A3251827. <http://dx.doi.org/10.2305/IUCN.UK.2009.RLTS.T11117A3251827.en>

## Disclaimer

To make use of this information, please check the [Terms of Use](#).

## External Resources

For [Images and External Links to Additional Information](#), please see the Red List website.

# Appendix

## Habitats

(<http://www.iucnredlist.org/technical-documents/classification-schemes>)

Habitat	Season	Suitability	Major Importance?
1. Forest -> 1.4. Forest - Temperate	-	Marginal	-
0. Root -> 6. Rocky areas (eg. inland cliffs, mountain peaks)	-	Suitable	-
14. Artificial/Terrestrial -> 14.2. Artificial/Terrestrial - Pastureland	-	Suitable	-

## Threats

(<http://www.iucnredlist.org/technical-documents/classification-schemes>)

Threat	Timing	Scope	Severity	Impact Score
2. Agriculture & aquaculture -> 2.3. Livestock farming & ranching -> 2.3.2. Small-holder grazing, ranching or farming	Ongoing	-	-	-
	Stresses:	1. Ecosystem stresses -> 1.1. Ecosystem conversion 1. Ecosystem stresses -> 1.2. Ecosystem degradation		
2. Agriculture & aquaculture -> 2.3. Livestock farming & ranching -> 2.3.3. Agro-industry grazing, ranching or farming	Ongoing	-	-	-
	Stresses:	1. Ecosystem stresses -> 1.1. Ecosystem conversion 1. Ecosystem stresses -> 1.2. Ecosystem degradation		

## Conservation Actions in Place

(<http://www.iucnredlist.org/technical-documents/classification-schemes>)

Conservation Actions in Place
In-Place Land/Water Protection and Management
Conservation sites identified: Yes, over entire range

## Conservation Actions Needed

(<http://www.iucnredlist.org/technical-documents/classification-schemes>)

Conservation Actions Needed
1. Land/water protection -> 1.1. Site/area protection
2. Land/water management -> 2.1. Site/area management
5. Law & policy -> 5.1. Legislation -> 5.1.2. National level
5. Law & policy -> 5.1. Legislation -> 5.1.3. Sub-national level

<b>Conservation Actions Needed</b>
5. Law & policy -> 5.4. Compliance and enforcement -> 5.4.2. National level
5. Law & policy -> 5.4. Compliance and enforcement -> 5.4.3. Sub-national level

## Research Needed

(<http://www.iucnredlist.org/technical-documents/classification-schemes>)

<b>Research Needed</b>
1. Research -> 1.2. Population size, distribution & trends
1. Research -> 1.3. Life history & ecology
1. Research -> 1.5. Threats

## Additional Data Fields

<b>Distribution</b>
Lower elevation limit (m): 1500
Upper elevation limit (m): 2200
<b>Population</b>
Population severely fragmented: No



## The IUCN Red List Partnership



The IUCN Red List of Threatened Species™ is produced and managed by the [IUCN Global Species Programme](#), the [IUCN Species Survival Commission \(SSC\)](#) and [The IUCN Red List Partnership](#). The IUCN Red List Partners are: [BirdLife International](#); [Botanic Gardens Conservation International](#); [Conservation International](#); [Microsoft](#); [NatureServe](#); [Royal Botanic Gardens, Kew](#); [Sapienza University of Rome](#); [Texas A&M University](#); [Wildscreen](#); and [Zoological Society of London](#).