

Rågö past and present

The history of Rågö village probably starts with the population increases in the late 15th and early 16th centuries. The lack of agricultural land on the mainland brought people to the islands to break new ground. At the most, there were three farms in Rågö village. The islanders, like most archipelago dwellers, lived from raising livestock and fishing. For several centuries, the people of Rågö used the islands of Kalvö and Horsö for grazing and hay making.

There have been no permanent residents on Rågö for the past 50 years. However, the buildings in the small village are still largely intact, and the restaurant and youth hostel are open during the summer months.

On Rågö, there is an exhibition about past life in the Tjust archipelago, featuring boat builders and fishermen who lived and worked on the island. The boat yard, Tjust Allmogeåtar, restores and exhibits old boat types from Tjust. The annual Rågö Day with many activities is held in July every year.

Please note ...

... that within the nature reserve it is forbidden to:

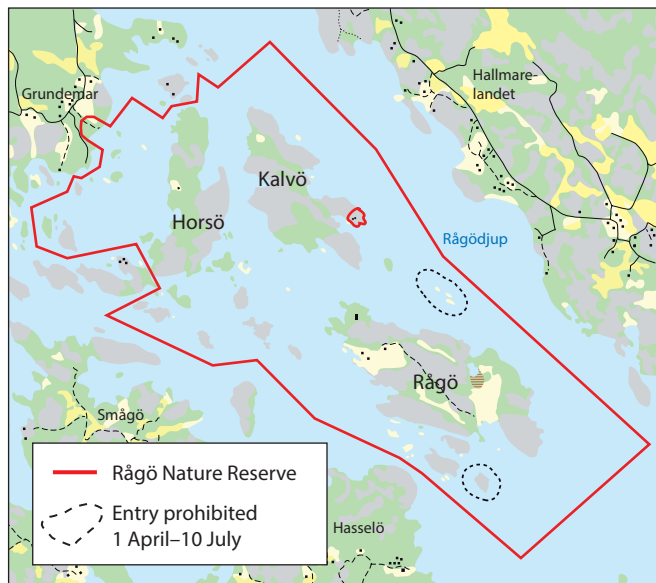
- § during the period 1 April–10 July, set foot upon or navigate through the bird conservation areas,
- § drive motor vehicles, except on existing roads,
- § park motor vehicles, caravans or trailers other than in designated places,
- § operate water scooters, hoovers or similar other than in the middle of the marked fairway nr 349,
- § water ski,
- § camp other than in designated places,
- § moor or anchor a boat for more than 48 hours in the same place,
- § fly or land low-flying airships,
- § cycle other than on designated roads or paths,
- § climb in nesting trees, go near birds of prey nests, lairs or burrows, or in any other way deliberately damage or disturb wildlife,
- § let dogs off leash or bring other untethered pets,
- § light fires other than in designated places or in own grills or camping stoves,
- § pick or damage mosses, lichens or tree fungi,
- § dig or pull up vascular plants,
- § damage or remove standing or dead trees, stumps, bark, branches, bushes or twigs.

Without permission from the County Administrative Board it is forbidden to:

- § collect insects in lethal traps.

Without consultation with the County Administrative Board it is forbidden to:

- § carry out investigations or research on animals, plants, grounds or water.



Find us: Rågö Nature Reserve is located in the Tjust archipelago, south of Loftahammar.
Coordinates, Rågö village harbour (RT90): X: 6415622, Y: 1554613.

Visit Rågö!

You can get to Rågö in your own boat or by ferry. During peak season ferries depart according to a fixed timetable. At other times ferries leave on demand.

The main island of Rågö has both a restaurant and youth hostel, run by the Hultberg family. The harbour has guest moorings with a dry privy.

For further information contact the Tourist Office in Loftahammar, tel. +46-(0)493-681 65, or the Hultberg family, tel. +46-(0)70-584 30 02.

Visit our website: www.rago.nu

Further information

Kalmar County Administrative Board
391 86 KALMAR, Sweden
+46-(0)10-223 80 00
www.lansstyrelsen.se/kalmar

Produced by: Naturcentrum AB and Kalmar County Administrative Board. Photos: Kalmar County Administrative Board.
2000 copies. Print: DanagårdLITHO AB, 2017

The area is part of the EU's ecological network of protected areas, Natura 2000.



Länsstyrelsen
Kalmar län
Administrative Board of Kalmar County

NATURE RESERVE IN THE COUNTY OF KALMAR



Welcome!

Rågö is an idyllic island in the Tjust archipelago.

Here, you can walk through deep pine forests to smooth rocks by the sea. The well-kept small village on Rågö, with hostel, restaurant and exhibitions, attracts many visitors.

The reserve also includes the islands of Horsö and Kalvö, as well as a myriad of bird-rich skerries and islets.

Island walks

On Rågö there are walking trails starting from the village harbour. The trails take you through verdant pastures and leafy groves to sun-warm rocks and flower-rich coastal meadows. From Näsudden, you can look out over the infinite horizon. If you want to swim, there are both rocks and a sandy shore.

On Horsö and Kalvö, you find open pine forests. The coastal pines are ancient and crooked. Inside the dense forest, the sound of the sea is dampened by soft moss carpets reminiscent of the vast forests in Småland.

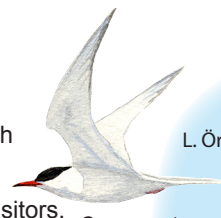


Rågö village

Archipelago herbs and birds

In the coastal meadows on Rågö, you can botanise among sea plantain, sea arrowgrass, marsh arrowgrass, brookweed and fairy flax. Reeds, sea club-rush and grey club-rush thrive in ungrazed areas; a sea of green, interspersed with the intense magenta of the purple loosestrife.

The archipelago also has a rich birdlife. Diving terns, elegant great crested grebes, and oystercatchers running around are a common sight. If you are lucky, you may spot an eagle soaring majestically in the sky. Look out for black woodpecker, wryneck and lesser spotted woodpecker in the pine forest.



Common tern
Sterna hirundo
Ill.: P. Elfman

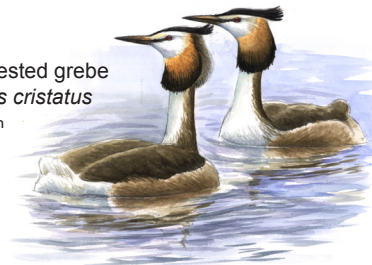


Sea plantain
Plantago maritima
Ill.: N. Forshed



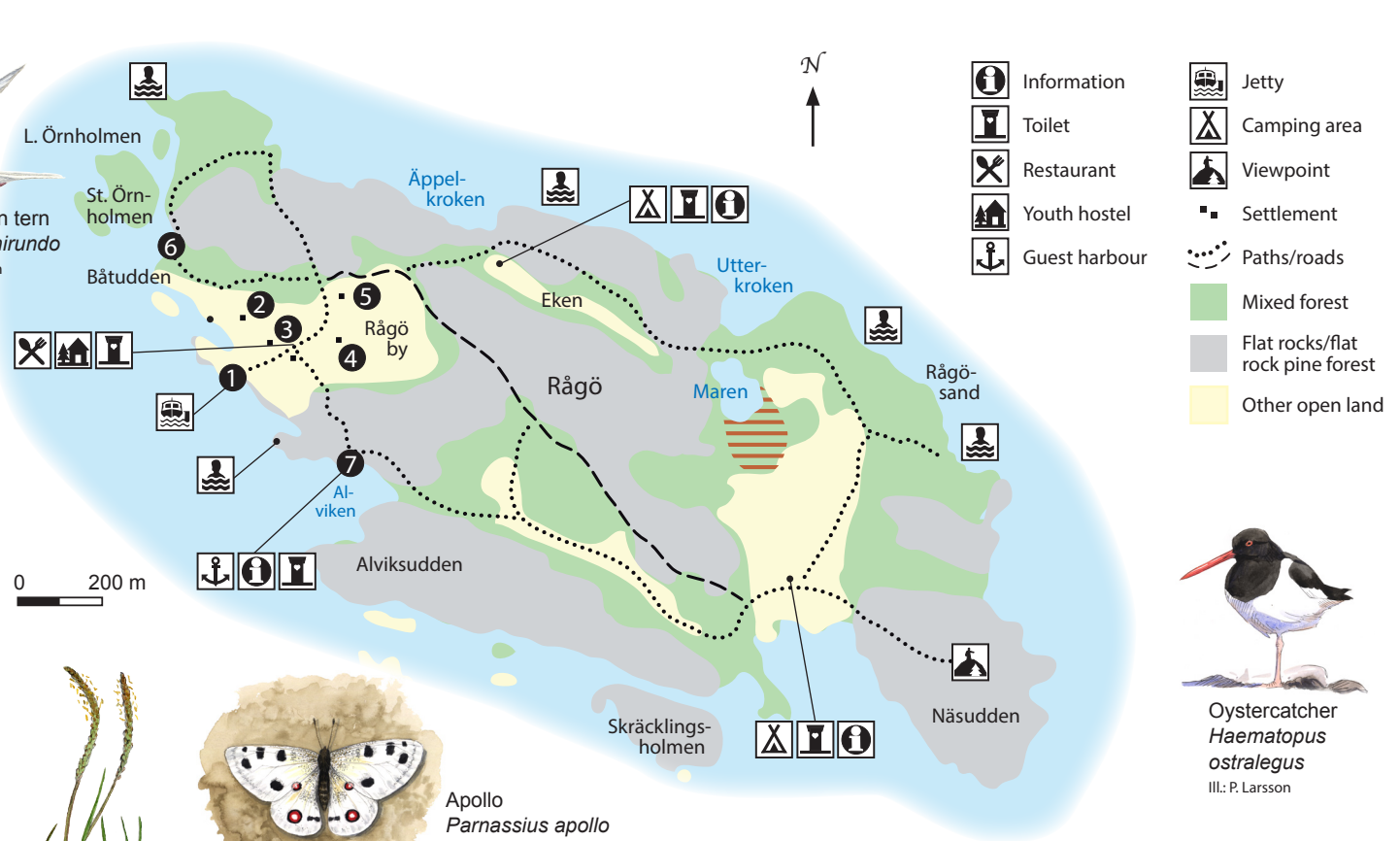
Apollo
Parnassius apollo
Ill.: P. Larsson

Great crested grebe
Podiceps cristatus
Ill.: P. Larsson



Horsö – a haven for flower and butterfly lovers

Horsö has a more lush and diverse vegetation than the other islands, due to the mineral-rich rock. Grazing animals also contribute to the diversity of herbs, which means that we can enjoy species such as cowslip and mountain everlasting. On sunny summer days, colourful butterflies flutter through the flowers. One of the rarer butterflies is the large and beautiful Apollo. The silver-spotted skipper, Niobe fritillary and different species of Zygaenidae moths also thrive in the pastures on Horsö.



Oystercatcher
Haematopus ostralegus
Ill.: P. Larsson

- 1 Rågö village harbour.** Unoccupied moorings can be used for short day visits. For overnight moorings, please use the guest harbour in Alviken. largest in the archipelago and gives you an idea of a once prosperous farm. It houses an exhibition about past life in the archipelago.
- 2 Janssonsgården.** The farm from the mid-19th century is named after Henrik Jansson, the last commercial fisherman on the island. Youth hostel accommodation. With five rooms, kitchen and glass veranda, this is the largest and youngest of the farms.
- 3 Rågö village restaurant.** Here, in mother Anna's house from 1848, you find everything from coffee and home-made cakes to scrumptious fish dishes with fish caught and smoked on the premises.
- 4 The barn** is one of the
- 5 Wilhelmssonska gården.** With five rooms, kitchen and glass veranda, this is the largest and youngest of the farms. Youth hostel accommodation.
- 6 Boat yard.** The association Tjust Allmogebåtar builds and restores new and old traditional boats from the Tjust archipelago.
- 7 Alviken guest harbour.** Waste bin and dry privy. Walking trails to the village. Free mooring for one night.