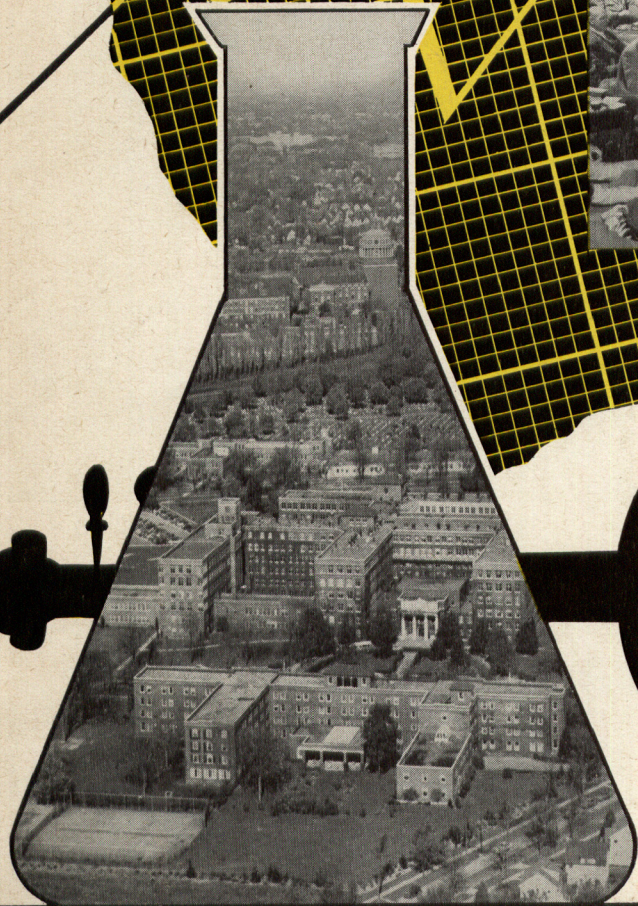


FEBRUARY-MARCH, 1950



ROCHESTER { ALUMNI ALUMNAE REVIEW

XI No. 3

ANNUAL REPORT
THE UNIVERSITY OF ROCHESTER
ALUMNI-ALUMNAE ANNUAL GIVING FUNDS



Mrs. Mabel Gleason Olney, 4-35
385 Hollywood Avenue
Rochester 7, New York



*"My
cigarette?
Camels,
of course!"*



WITH SMOKERS WHO KNOW...IT'S

CAMELS FOR MILDNESS!

Yes, *Camels* are SO MILD that in a coast-to-coast test of hundreds of men and women who smoked Camels—and *only* Camels—for 30 consecutive days, noted throat specialists, making weekly examinations, reported

NOT ONE SINGLE CASE OF THROAT IRRITATION due to smoking CAMELS!



The Rochester Alumni-Alumnae Review

DISTRIBUTED AMONG THE GRADUATES AND UNDER-GRADUATES OF THE UNIVERSITY OF ROCHESTER

VOL. XI, No. 3

Published bimonthly, in January, March, May, July and November by the University of Rochester for the Associated Alumni and the Alumnae Association. Business Office, 115 West Miller St., Newark, N. Y. Editorial Office, 15 Prince Street, Rochester 3, N. Y. Annual subscription: \$1.25; Single copy: \$.25. Co-editors: Charles F. Cole, '25, and Warren Phillips, '37; Business Manager: Peter J. Proceller Jr., '37. Asst. Business Manager: Robert Tucker, '40. Entered as Second Class Matter at the Post Office, Newark, New York.

February-March, 1950

Alumni, Alumnae Launch Centennial Fund Campaign

NINETEEN fifty is a big year for the University of Rochester. It is a year of multiple anniversaries—the University's 100th, the Women's College's 50th, the Medical School's 25th, and the beginning of a new quarter century for the Eastman School of Music.

The sights are raised for new accomplishments, and the Centennial Year Alumni-Alumnae Giving Funds drive has set its target high in celebration of this epochal stage in Rochester's great tradition.

The goal is \$50,000, or \$10,000 more than last year's highly successful campaign. The organization of group chairmen, class fund managers and hundreds of class agents is all set up, and the signal to go is the opening dinner for the workers on March 23 in Cutler Union.

Under a coordinating committee composed of representatives of all divisions of the University, each school and college will conduct its own drive for its specific objectives. The quotas are as follows:

Men's College Alumni Fund, \$35,000; Women's College Alumnae Fund, \$7,500; School of Medicine and Dentistry, \$5,000; Eastman School of Music, \$2,000; University School, \$500.

Franklin J. Enos, '20, has accepted the chairmanship of the 1950 Alumni Fund; Marie LeMay Woodams, '24, heads the Alumnae Fund; Dr. J. Fletcher McAmmond and Dr. Ruth Oakley are Medical School co-chairmen; Paul Relin, '30, and Ruth Zimmerman Steese, M.M. '33, Eastman School co-chairmen. The coordinating committee includes these and E. Willard Dennis, '10, president of the Associated Alumni, Margaret Neary Bakker, '13, Alumnae Association president, Dr. Jacob D. Goldstein, head of the Medical School graduate organization, Raymond J. Hasenauer, Sr., president of the Eastman School alumni group, and Harold Paddock, Graduate School.

Enos set an outstanding record in last year's fund drive



The Coordinating Committee of the 1950 Alumni-Alumnae Fund Campaign (from left): Ruth Zimmerman Steese, Paul Relin, Franklin J. Enos, Marie LeMay Woodams, Dr. J. Fletcher McAmmond.

as chairman of Group II in charge of class fund managers from 1920 through 1929. He is vice president in charge of production, and director of the R. T. French Company. For his Alumni Fund Committee he has chosen Dennis as chairman of Group I in charge of fund managers from 1889 through 1910; Swayne P. Goodenough, '13, Group II, 1911 through 1919; G. Alfred Sproat, '22, Group III, 1920 through 1929; Russell E. Craytor, Jr., '35, Group IV, 1930 through 1939, and John W. Tarbox, Group V, for 1940 through 1949.

Assisting Mrs. Woodams will be, in addition to Dr. Oakley, Jane Cameron, '29, chairman of the University Extension, and Lucille Bowen, '36, chairman of the Graduate School Alumnae.

Ruth Snider Crossland, '25, will serve as chairman for the Women's College class agents. Decade chairmen will be: 1902-09, Lucy Higbie Ross, '09; 1910-19, Beatrice R. Tripp, '10; 1920-29, Dorothy Lobbett Burdick, '24; 1930-39, Elinor Snyder Kappelman, '35, and 1940-49, Elizabeth Whitney Nicoll, '41. Violet Jackling Somers, '23,

will head the special gifts committee. Class meetings will be held between March 30 and April 14 in Cutler Union.

Mrs. Woodams was president of the Alumnae Association in 1947-48, and also served as general chairman of the Swimming Pool Fund campaign for the last two years, as well as working on numerous alumnae committees.

Group chairmen for the Eastman School are Henry Osborne, '28, for the classes from 1923 through 1929; Benjamin Scammell, '34, 1930 through 1934; Paul W. Allen, '39, 1935 through 1939; Marguerite Zoppoth, '44, 1940 through 1944; Janet De Groote, '45, 1945 through 1949. Thaddeus Jones, M.A. '42, is in charge of the Eastman School graduate department drive.

At an organizational meeting for the fund workers, Provost Donald W. Gilbert congratulated the alumni and

alumnae for their excellent performance in the 1949 campaign, stressing the vital importance to the University of additional funds thus provided in assuring the continuance of the "highest quality educational job possible." Although the University's financial condition is sound, additional income is necessary to meet rising educational costs and to maintain the University's program, he said.

Dr. Gilbert pointed out that scholarships have been increased this year in line with the necessary increase in tuition, and that the new scholarships will, when fully in effect, increase the University's annual budget for undergraduate scholarships in the College of Arts and Science to approximately \$180,000, a rise of 35 per cent. Every dollar given by graduates in the annual fund campaign is equivalent, he said, to the income on a \$25 endowment.

—R—

'Q' Club, Kaleidoscope, Water Ballet Attract Graduate Interest

Its plot is a deep secret, but this year's Quilting Club show at the Men's College will provide such sparkling gaiety and robust humor as to outshine all past performances and make the Centennial production one that will linger long in memory.

That's on the unflinching assurance of John Murphy, a star in last year's "Q" club show, and Don Marston, luminary of many a Stagers' production, who are co-directors this year.

The 1950 version of the Quilting Club's annual frolic, always a high point of the college year, will be unveiled to alumni and alumnae at a special first-night performance on Thursday evening, May 11, in Strong Auditorium. There will be a social get-together for the graduates in Todd Union, and the hilarious pre-curtain antics, a la "Hellzapoppin," which are by way of becoming a tradition on Alumni-Alumnae Night, will be even more side-splitting this time, the producers promise.

This year the Quilting Club will give a \$200 scholarship to the Alumni Fund to be awarded on opening night by the UR Scholarship Committee. The award will be given to the undergraduate man who, in the opinion of the committee, has contributed most to the Quilting Club and who maintains a good academic standing. The gift is part of the Jase Lawrence Memorial, established in tribute to one of the club's outstanding members, who was killed while in World War II military service.

Tickets will go on sale in April, and definite dates for obtaining advance tickets will be announced soon.

Scotch detectives pruned plaid trees in Scotland Yard, Big Ben boomed in the fog, and Cockney accents were the order of the day in "Copscotch", the 1950 Kaleidoscope given by the undergraduates of the College for Women on Friday and Saturday, March 10 and 11.

The Alumnae Association sponsored the opening night performance of the mystery-comedy which was laid alternately in Scotland Yard and the foggy streets of London. "Copscotch", written and produced entirely by undergraduates, was directed by Cenza Colefemina, '50, and written by Barbara Swan, '50. Jean Cutler, '50, was organizational director.

The annual Water Ballet presented by the Women's Athletic Association was to be held on Friday and Saturday, March 24 and 25, in the River Campus pool, with members of the Alumnae Association acting as sponsors of the Friday night performance. "Aquatennial", this year's production, was highlighted by a Centennial number in five parts, featuring the music and costumes of the five decades since 1900. "Swan Lake", the second half of the program, starred Elaine Kroha, '51, daughter of Neva Smy Kroha, '20, as the Swan Queen. Other alumnae daughters in the cast were Ann Bartlett, '51, daughter of Violet Jackling Somers, '23, and Constance Wendt, '52, daughter of Louise Gelli Wendt, '28. The proceeds from the affair were given to the Swimming Pool Fund. Hazel Wilbraham, '27, assistant professor of physical education, and Miss Merle Spurrier, associate professor of physical education, directed the undergraduates.

Major Musical Production to Highlight Centennial Convocation

An original score by Dr. Howard Hanson, world-famous composer—script by Dr. John R. Slater—played and sung by the 90-piece Eastman School Symphony Orchestra and the 200-voice Eastman School Chorus!

Those are features of a special production to be staged at the Centennial Alumni-Alumnae Convocation on June 10, described by its authors as a musical interpretation of dramatic events in the University's first century.

This major performance is only one of the events scheduled for the Convocation by the special committee headed by E. Willard Dennis, '10. Another highlight will be awards in person to a number of UR graduates who have won distinction in various fields of endeavor. A special committee, whose names will not be made public, is making a most careful selection of the alumni and alumnae to be thus honored.

The Convocation also will mark President Alan Valentine's last official address to Rochester graduates.

Preceding the program, a buffet supper will be served at which alumni and alumnae from all parts of the country returning for the occasion will be guests of the University. Arrangements for the supper are in charge of a "loaves and fishes" sub-committee headed by Ruth Tuthill Hoffmeister, '25, and Dr. Albert D. Kaiser, '09.

Because of limitations on seating capacity for the evening program and for the number of persons who can be served at supper, obviously attendance will have to be

kept within bounds. The committee plans to issue tickets to both the evening meeting and the supper in order of reservations, with an absolute deadline. All details will be furnished by special mailings to graduates well in advance of the event so that they may make their reservations in ample time, advises Ernest A. Paviour, '10, general Centennial chairman.

The date of the Centennial Convocation, as well as all Commencement events, has been advanced one week ahead of the original time. By selecting June 10, it was possible to obtain the fullest cooperation from the Eastman School of Music, which was essential because of the musical character of the special presentation.

In addition to those mentioned above, members of the hard-working Centennial Convocation Committee include Margaret Neary Bakker, '13; Helen Scott Wight, '28; Peter J. Prozeller, '37; Charles F. Cole, '25; James H. McGhee, '19; Janet E. Phillips, '40; Dr. Howard B. Slavin, '33; Lloyd F. Seebach, '48; Raymond J. Hasenauer, '29; Mrs. Marion Fry; James W. Gray, '25; Marion Booth Wiard, '24, and Willis T. Jensen, '27.

An equally alert committee is the Centennial Open House Committee led by Joseph C. Wilson, '31. His large organization is making elaborate plans for the week of November 6-11 when the entire Rochester community will have an opportunity to see the University in action, from art gallery and atomic energy to X-ray and zoology.

—R—

Ill Health Forces Resignation of Dr. Greene as Wells President

Dr. Richard L. Greene, '25, has resigned as president of Wells College, effective next July 1, because of ill health. He hopes to return ultimately to teaching.

Trustees of Wells accepted his resignation with "deep regret" on February 2, and granted him a leave of absence for the intervening period. In resigning, Dr. Greene said he was acting on the advice of his physician.

Chairman of the English Department at Rochester at the time of his election as Wells' ninth president in 1946, Dr. Greene had been a member of the Rochester faculty for 17 years, rising to a full professorship at the age of 33. He received his M.S. and Ph.D. degrees at Princeton, and in 1931-32, spent a year abroad as a research scholar of the American Council of Learned Societies, collecting the texts of medieval English carols. His definitive volume in that field, "The Early English Carols," was published in 1935 by the Clarendon Press, Oxford.

In accepting his resignation, the trustees of Wells College recorded their "deep appreciation of the services he has rendered the college," and added:

"President Greene has given brilliant and stimulating leadership in all activities of the college, social, academic, and spiritual. He has quickened in all who labored with him a vision of the future possibilities of higher education for women. His delightful personality has endeared him to everyone, and his companionship will be long remembered.

"He has been ably and graciously assisted by Mrs. Greene in furthering the welfare and happiness of the college and the community. They are loved and will be missed by all. It is the hope and prayer of all members of this committee and of all who know him that his convalescence may be speedy and complete."

Mrs. Greene is the former Eleanor Foulks Curtiss, also a member of the Class of 1925 at Rochester.

Paramount Newsreel Portrays UR Role in Developing X-Ray Movies

MANY Rochester graduates were among the millions of movie-goers who saw the Paramount newsreel story on X-ray motion pictures made at the UR School of Medicine and Dentistry, released in late January. The pictures were shown in theaters throughout the United States, Canada, South America, and in Europe.

Made in cooperation with the Radiology Department at the Medical School, the showing made motion picture history—it was the first time X-ray movies had been used in a newsreel. In the laboratory, X-ray equipment and motion picture camera are synchronized to record the movement of internal organs and structures. Actual X-ray films made in the Medical School laboratory were shown, together with shots showing the detailed operations incident to recording the movies.

The X-ray movie apparatus developed at the University is proving of steadily increasing value as a new tool for study and diagnosis and for medical teaching.

After three years of research, X-ray movies made with the camera in use at the Medical School were first demonstrated in December, 1948, before the Radiological Society of North America in San Francisco, and received

the society's Award of Merit. Since then, several hundred patients have been studied, and a number of technical improvements made in the equipment. The process is not new, but had formerly been restricted by the danger to the patient of prolonged exposure to X-rays. The Rochester camera permits a safe amount of radiations of X-rays.

Recently the camera has been used for the study and diagnosis of heart diseases, the first time, it is believed, that this type of diagnosis has been made by X-ray movies of humans. In view of new advances in heart surgery, particularly in "blue babies," it is hoped that the films may be of value in learning more about such diseases and their treatment. The X-ray movies in this work are made by injecting an opaque dye through the heart and its vessels so that the flow of blood can be visualized, with the possibility of showing up various heart ailments.

The successful development of X-ray movies at the Medical School resulted from the combined efforts of Dr. George H. Ramsey, head of the Radiology Department, Dr. James S. Watson, Jr., Dr. Theodore H. Steinhausen, Dr. John Thompson, and technicians Sydney Weinberg and Frank Dreisinger.

—R—

Alessandro Cited for Brilliant Record with Oklahoma Symphony

VICTOR Alessandro, Eastman School, '37, who has come to the fore as one of the leading native U. S. symphony conductors, was the subject of a recent full-page feature in *Newsweek*, which hailed him as the "Oklahoma State Symphony's brilliant young 34-year-old conductor."

The Oklahoma State Symphony, which Alessandro took over in 1938 when it was a WPA project, has become recognized as one of the nation's most enterprising aggregations, said *Newsweek*. In January, the orchestra began its 1950 radio season over the Mutual network with a 13-week series called "Music of the Twentieth Century." "This devotion to the cause of contemporary music springs almost entirely from the interest and efforts of Victor Alessandro," the magazine declared.

Born in Waco, Texas, the son of a bandmaster, Alessandro "never saw himself as anything else but a conductor, and followed his bent with studies at home and

abroad. Oklahoma was his first permanent post, and neither he nor the symphony has since appeared disposed to break off the happy relationship."

The University of Rochester gave recognition to Alessandro's achievements at the 1948 commencement, when it awarded him the honorary degree of Doctor of Music, the first distinguished alumnus of the Eastman School to be so honored. The citation noted that he won the Salzburg Fellowship in orchestral conducting in 1937, and added:

"Too many young conductors sit about patiently waiting for Dr. Koussevitsky and Maestro Toscanini to retire. Mr. Alessandro did not belong to the waiting group. Instead he accepted the infinitely harder challenge of developing a new orchestra and, with true pioneer spirit, welding it into the life of the community and the state, and laboring unceasingly until he had created an ensemble which has won the acclaim of visiting artists and critics."

President Valentine Honored for Work with Netherlands Mission

THE University of Rochester's significant part in community and world affairs was brought clearly into focus at the annual dinner of the Rochester Chamber of Commerce on January 16 when President Alan Valentine, guest of honor, was paid an international tribute for his work as chief of the Marshall Plan mission to the Netherlands in 1948-49.

Linked to the University's Centennial celebration, the occasion brought town and gown, national and international representatives together in what was generally hailed as one of the most impressive events in the Chamber's history. Scores of University faculty and administration members joined with Rochester's industrial, civic, and professional leaders to fill the Chamber's large banquet hall to capacity, a total of nearly 900 persons.

It also brought to Rochester Paul G. Hoffman, administrator of the Marshall Plan European aid program, and Dr. Eelco Van Kleffens, the Netherlands ambassador to the United States. Hoffman spoke in glowing terms of President Valentine's outstanding service to his country in taking on the important ECA leadership in the Hague, and Ambassador Van Kleffens expressed his country's gratitude "in the name of the 10 million people of the Netherlands."

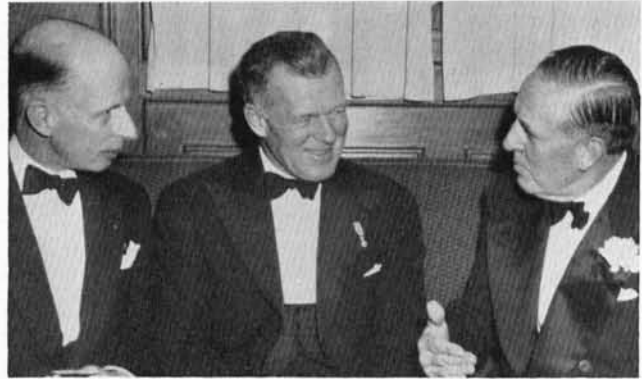
"Dr. Valentine," said the ambassador, "brought to his job certain magnificent qualities of the heart as well as the mind which endeared him to the people of the Netherlands and enabled him to do his job in a way to make the people of Rochester—and the United States—proud of him. My people knew their interests were in good hands as soon as they got to know him."

Ambassador Van Kleffens referred to the University's renown in his country and elsewhere in Europe, calling special attention to its reputation in the field of nuclear physics.

Mercer Brugler, '25, president of the Pfaudler Company, and president of the Chamber in 1949, and Milton E. Loomis, executive vicepresident of the Chamber, were mainly responsible for arranging the tribute to President Valentine and for bringing Hoffman and Ambassador Van Kleffens to Rochester for the dinner.

The University of Rochester early recognized Hoffman as an "industrial statesman" when in 1944 it conferred an honorary degree upon him, long before he was chosen as ECA administrator. Since then, more than a dozen universities have awarded him honorary degrees.

M. Herbert Eisenhart, president of the University's Board of Trustees, presided at the Chamber dinner. Brugler, in turning over his gavel to Lee McCanne, president of the Stromberg-Carlson Company, the Chamber's president for 1950, predicted that 1950 will be a good year for



Paul G. Hoffman (right) illustrates an anecdote in an after-dinner chat with Dr. Eelco Van Kleffens, Netherlands ambassador to the United States, and President Valentine.

business, "not so big in dollar volume as 1948, and not so big in unit volume as 1949, but nevertheless a good year" and one which should bring a return to "aggressive selling."

In the main address, Paul Hoffman said that contrary to the opinion of many Americans, ECA is not a relief agency taking money from the American taxpayers and sending it abroad mainly as a humanitarian gesture. In reality it is an instrument for maintaining Western civilization and American freedom, he declared.

"I cannot conceive of the maintenance of our freedoms if Western Europe goes down," he said. "It doesn't follow that atom bombs would fall immediately on New York, but it would be necessary for us to have a budget of 25 billions a year for armaments . . . and we would have to restore permanently all the war-time economic controls which wither the dynamism of our economy."

The Marshall Plan now is at the turning point, Hoffman asserted, noting that "the first half of the job is done; we now face the less costly in dollars but vastly more difficult job in terms of human adjustments of lifting Europe above the need of extraordinary outside assistance."

—R—

Prof. Frank Von der Lancken Dies

Remembered with esteem and affection by UR students of the years 1915-24, Prof. Frank Von der Lancken died on January 22 in Tulsa, Okla. He had been in ill health for several years, and was 78 at the time of his death.

Professor Von der Lancken taught art appreciation and the history of art at the University, and was widely known as an artist.



A typical session at the Human Rights Conference: Interested students listen to a discussion of "A Stable Economy in an Unstable World" by Dr. Edwin G. Nourse, noted economist (seated in wing chair at right) and Provost Donald W. Gilbert.

Human Rights Conference Attracts World Leaders to Campus

AN unqualified success that brought national attention to the University of Rochester, the Centennial Students' Conference on Human Rights held on February 10 and 11 brought to the campus many leaders of world opinion who made a memorable contribution to this major event in Rochester's 100-year observance.

Among those participating were Mrs. Franklin D. Roosevelt, chairman of the United Nations Commission on Human Rights; Dr. Ralph Bunche, United Nations mediator in Palestine; Dr. Edwin G. Nourse, formerly chairman of the President's Council of Economic Advisers and outstanding spokesman for the American private enterprise system; Lieut. Gen. Walter Bedell Smith, U. S. ambassador to Moscow from 1946 to 1949; Paul H. Gore-Booth, head of the British Information Services in the United States; Swami Nikhilananda, Hindu monk and interpreter of the new India republic; Patrick N. Malin, new director of the American Civil Liberties Union, and Prof. John N. Hazard of the Russian Institute of Columbia University.

As the part of the Centennial program directed particularly to them, it was a significant occasion for the University's students in all its schools and colleges. It also had community and national implications. News coverage received major play not only in Rochester papers and on the radio but also in the metropolitan press and elsewhere throughout the country. Said the *Rochester Democrat and Chronicle* in an editorial:

"The University Conference on Human Rights and the Lincoln Day observance sponsored by the City Club and the Rochester United Nations Association provide a total of community interest that will linger among the memorable events of our history."

The *Times-Union* called the conference a "fine occasion

on which the University of Rochester in general and those behind the Conference in particular deserve the congratulations of the entire community."

As Provost Donald W. Gilbert pointed out, a major purpose was to emphasize in the minds of the students their heritage of University history of which they are current beneficiaries. At this juncture in world affairs, he said, "nothing seems more important than recognition of the individual and his rights and responsibilities as a human being, as a citizen, and as a participant in the social and religious life of his time . . . This conference presents an opportunity at which, with the leadership of experts in their respective fields who have themselves made notable contributions, the students of the University will be able to explore the position of the individual in modern society in this country, in England, in Russia, in India, and elsewhere . . . to consider human rights and responsibilities in their social, political, economic, and religious aspects."

In informal discussion groups following the main sessions, students had full opportunity to question the distinguished guest speakers and to express their own opinions. The discussion periods were in the form of coffee hours in Todd Union and fraternity houses.

Space does not permit detailed reports in the *Review* on the viewpoints expressed by the 18 speakers and guest discussants, who covered a wide range of topics, including the Socialist experiment in Great Britain, social security in this country and England, new challenges to the American free enterprise system, health services for Americans, the idea of social justice in the Soviet Union, religion in a materialistic age, the state of civil liberties in America, and the meeting of East and West.

General Smith and Nikhilananda discussed the indi-

vidual and the state in Soviet Russia and in the new India, respectively, in a session in the Eastman Theatre on the evening of the opening day of the conference. Other sessions were held at the River Campus.

The nature and objectives of the conference were summed up by President Valentine as follows:

"When the University of Rochester was founded 100 years ago, our nation was attempting to live half-slave, half-free. That compromise with human rights failed, and the American dilemma of 1850 is now a problem involv-

ing all nations and all peoples.

"Human rights still rest on freedom of person and the dignity of the human spirit . . . This University has enjoyed a century of freedom to advance that concept. It enjoys today (as not all enjoy today) the freedom to discuss every aspect of human progress and human failure . . . As the University looks ahead to its second century, these are questions appropriate for discussion at this Centennial Conference, to the end that human rights may be appreciated, preserved, and expanded."

—R—

UR Physicists Discover New 'Rochester' Cosmic Ray Star

A NEW cosmic ray star, called the "Rochester star," discovered by three University of Rochester physicists, is one of the latest and most important developments in science's efforts to find the atom's secret, an endeavor to which the UR Physics Department has made major contributions.

The significance of the star, disclosed on photographic plates sent up by unmanned balloons to an altitude of nearly 20 miles, was the strong evidence it gave for the existence of a new atomic particle, the neutral meson, and proof that a single collision of a high energy alpha particle with a silver atom in the photographic emulsion results in the production of a large number of heavy mesons. Only a few isolated heavy mesons have been produced artificially in the cyclotrons at the River Campus and at Berkeley Radiation Laboratory.

News of the findings drew excited attention from nuclear scientists all over the world, and the press and radio both in this country and abroad gave it prominent play when the University made the announcement in January.

Waldemar Kaempffert, science editor of *The New York Times*, devoted nearly two columns to discussion of the Rochester cosmic ray research under Dr. Bernard Peters and Helmut Bradt. Morton F. Kaplon, a graduate student in physics, also played a prominent part in the neutral meson studies.

"The (Rochester) star is of first rate importance because of the 74 particles that left radiating tracks on a photographic plate after the collision (a helium nucleus with an energy of more than 10,000 billion electron volts had struck a silver atom in the emulsion) had occurred," Kaempffert wrote. "At least 50 were of charged mesons; the others were neutral mesons. It was the discovery of the neutral mesons that was of importance."

The meson is a mysterious short-lived particle which is knocked out of atoms by cosmic rays, he explained. The atom is held together by an unknown binding energy of some kind, which may be the meson. Dr. Robert E. Marshak, noted theoretical physicist at the University of Roch-



Morton F. Kaplon (left), graduate student, and Dr. Bernard Peters study photographs made from plates sent aloft nearly 20 miles in unmanned balloons. The plates revealed the new cosmic ray star, the "Rochester Star" and also gave strong evidence of the existence of a new atomic particle. Shown in foreground are the aluminum cylinder attached to the balloon and the boxes of photographic plates which it contained.

ester, was the first scientist to suggest that there are at least two kinds of mesons, the heavy, found in outer space, and the light, found at the earth's surface, the latter being decay products of heavy protons. Experiments have since confirmed Dr. Marshak's theory.

Dr. Robert E. Marshak Named Chairman of Physics Department; Teaching, Research Staff Strengthened



Dr. Robert E. Marshak

ALREADY one of the nation's main centers of nuclear physics research, the University of Rochester has taken new steps to solidify the wide reputation of its Physics Department.

A brilliant young scientist who at 33 years of age is internationally known for his work in theoretical physics, Dr. Robert E. Marshak has been named chairman of the department, effective April 1. A member of the faculty since 1939, when he began as an instructor, Dr. Marshak was promoted to full professor last year, one of the youngest members of the faculty ever to achieve that rank. He succeeds Dr. George B. Collins, chairman since 1946.

Dr. Collins has resigned as of March 31 to take charge of the large scale accelerator work at Brookhaven National Laboratory, including the new two and one-half billion-volt cosmotron. Brookhaven is operated by nine leading Eastern universities, including Rochester, Columbia, Cornell, Harvard, Yale, Princeton, MIT, Pennsylvania, and Johns Hopkins. Dr. Collins, a UR trustee at Brookhaven, will maintain a close association with the University's program.

Other steps taken by the University to strengthen its physics teaching program at the undergraduate and graduate level, and its research in that field, are as follows:

Appointment of Dr. Sidney W. Barnes as administrator of the 250,000,000-volt cyclotron project, with supervision over the operations of the huge atom smasher being carried on by the University in cooperation with the Office of Naval Research and the Atomic Energy Commission.

Promotion of Dr. Stanley N. Van Voorhis from associate professor to full professor of physics, with supervision over the 7,000,000-volt cyclotron project.

Plans for immediate construction of an addition to the cyclotron laboratory to provide urgently needed new research facilities for staff and graduate students.

Projected appointment of another top-rank experimental physicist to round out the teaching and research staff.

With its two cyclotrons and its cosmic ray and theoretical physics programs the UR Physics Department has made notable scientific contributions, especially in the fields of nuclear physics and elementary particle reactions.

A key man in the wartime atomic bomb development program at Los Alamos and elsewhere, on leave from the University from 1942 to 1946, Dr. Marshak has achieved scientific prominence for his research on mesons and other aspects of nuclear physics. He was chairman of the Federation of American Scientists in 1947-48, representing the organization at an international physics meeting in Paris in 1948. He was chairman of a Fact Finding Committee of Los Alamos Scientists, and in 1948, on invitation of Dr. J. Robert Oppenheimer, head of the Institute for Advanced Studies at Princeton, N. J., he served for three months in the Institute's School of Mathematics. Columbia University has appointed him visiting professor of physics for its 1950 summer session.

He won international scientific attention in 1947 as the first man to propose the theory that there are two types of mesons, light and heavy, which since has been confirmed by cyclotron and cosmic ray research at Rochester, Berkeley Radiation Laboratory, and elsewhere. As a graduate student at Cornell in 1938, he collaborated with famed Prof. Hans A. Bethe in working out the

theories of the processes by which stars generate heat. They were awarded the \$500 A. Cressy Morrison Prize in natural science for that research.

Dr. Barnes, a foremost authority on the design and construction of cyclotrons, has been on the UR faculty since 1934. He and Dr. Lee A. DuBridge directed the planning and construction of the 7,000,000-volt cyclotron in 1938, and Dr. Barnes has been in charge of plans and development of the 250,000,000-volt cyclotron, since its inception. The big Rochester cyclotron, largest put in operation since the war, is one of only two major high-energy cyclotrons now operating at full capacity. The other is at Berkeley. The \$2,000,000 Rochester project is financed mainly by the Office of Naval Research and the Atomic Energy Commission.

Dr. Barnes also was on leave from the University during the war, serving on the Manhattan Project from 1942-45 at Los Alamos, the University of California, and Oak Ridge.

Dr. Van Voorhis, a graduate of Case School of Applied Science in 1930, with a Ph.D. from Princeton in 1935, came to Rochester as a research associate in 1938. He, too, was on leave from 1942-46 to serve as a staff member in radar research at Massachusetts Institute of Technology, headed by Dr. DuBridge.

In planning its Physics Department reorganization, the University administration consulted with a number of the nation's leading scientists, among them Dr. Oppenheimer, Professor Bethe, and Dr. Isidore I. Rabi, head of the Physics Department at Columbia University.

—R—

Faculty Honors Dr. Edwin Fauver in Special Resolutions

AS coach, college physician, physical education head; as friend and counselor to generations of University of Rochester students, and as an educator who wielded a national influence for clean, wholesome college athletics, Dr. Edwin Fauver enjoyed esteem and affection such as come to few men.

Professor emeritus of hygiene and physical education, Dr. Fauver died in his sleep on December 17, 1949, in Sarasota, Fla., just as he was about to leave with Mrs. Fauver on a winter vacation cruise. News of his death came too late for more than a bulletin in the last issue of the *Review*. The following warm tribute was paid to him in resolutions adopted by the faculty of the College of Arts and Science:

College physician, head of the department of physical education and athletics, coach of football and baseball, and a member of the majority of major faculty committees for a period of 29 years, he made an outstanding contribution to the University of Rochester.

His fine sense of humor, informal friendly manner, and interest in individual student problems won the love and respect of undergraduates by the score who came to him for counsel or medical attention. A pioneer in the fields of health, physical education, and athletics, he was nationally known, honored, and respected for his many contributions to this area of education.

The College Physical Education Association elected Dr. Fauver as its president in the college year 1922-23. For outstanding contributions in the field of physical education, the American Physical Education Association named him as a "Fellow" in the society in 1936. He was a charter member of the American Student Health Association and was active in the Rochester Tuberculosis and Health Association for many years.

He was chiefly responsible for the formation of the New York State Small College Athletic Conference which adopted uniform rules of eligibility such as the one-year residence rule for transfer students and the freshman rule, barring first-year students from Varsity teams in all sports.

Dr. Fauver served for 24 years as president of the Rochester District Board of Approved Basketball Officials; for many years he was president of the Lewis Street Settlement Committee, and was instrumental in establishing the Allied Forces, an organization interested in teaching the facts about alcohol. He was on the board of elders of the Third Presbyterian Church and for many years served as chairman of its Religious Education Council.

Dr. Fauver was graduated from Oberlin College in 1899. As an undergraduate, he excelled in athletics, especially football and baseball. The year following his graduation from Oberlin, he served as coach, director of physical education, and instructor in history at Alma College in Michigan, returning to Oberlin to coach and teach. He entered the College of Physicians and Surgeons of Columbia University in 1905 and received his medical degree in 1909. He was professor of hygiene and physical education at Swarthmore College from 1909 to 1911 and served in a similar capacity at Princeton University from 1911 until 1916, when he came to the University of Rochester.

The present program of physical education and athletics, the outstanding facilities and equipment, and the athletic policy here at the University of Rochester are a tribute to Dr. Fauver as an administrator and physical educator. As so well expressed by one of his colleagues, "his humor, his courage, his steadfast loyalty to his ideals were some of the outstanding characteristics of this highly esteemed man who served the University with highest distinction for a period of 29 years."

'Golden R' Club Organized to Bring Student Athletes to UR

AN initial group of some 100 alumni has launched a new "Golden R Admission Program" to recruit students for the Men's College who combine good scholarship with athletic ability.

The plan has the complete support of the University administration, the coaches, the Admissions Office headed by Charles R. Dalton, the faculty, and the Alumni Board of Managers, all of whom have agreed to aid in every way possible to make it a success.

As announced at an organization dinner on February 8 in Todd Union, the purpose of the project is frankly to bolster Men's College teams in the various major inter-collegiate sports—football, basketball, baseball, track, swimming, and soccer.

This will be done within the University's long-standing athletic policy, which prohibits any subsidization of athletes in any guise. Emphasis will not be primarily on scholarship aid, but on finding youths who do not need help on their college finances but who can be interested in attending the UR Men's College as a place with a reputation for high quality educational policies, with excellent coaching and athletic facilities such as few colleges can boast. This does not by any means eliminate the possibility of scholarships for candidates who can meet the University's academic requirements, however.

Although the plan is beginning as a "grass roots" campaign by alumni in the Rochester area, it is hoped that eventually it will spread to other Rochester graduate groups all over the country. As a natural nucleus for the "Golden R Program," the organizing group consists of a large number of former Varsity lettermen, but all alumni interested in helping to build up the University's prestige on the playing fields and in college life as a whole are urged to join in the effort. Kits have been prepared for their guidance, and these and other details may be obtained from the Alumni Office, Todd Union.

The procedure was worked out by four keen young graduates who starred on the great UR teams under Dudley DeGroot—Dick Secrest, "Moose" Kramer and Bill Bruckel, all of the Class of '43, and Bill Sandow, '42, all exemplifying the combination of scholarship ability and athletic talent that is being sought. Charles L. Rumrill, '22, who conceived the "Golden R" project, and Swayne P. Goodenough, '13, were advisers on the plan as representatives of the Alumni Board of Managers.

The job will be a concerted selling campaign in which alumni will be on the lookout for good high school and preparatory material for the University, by attending school athletic contests in their area with the specific aim of locating likely candidates who can meet the college's scholastic standards, obtaining essential information about



"Golden R Club" leaders (from left): Bill Bruckel, Charles R. Dalton, director of admissions, Dick Secrest and "Moose" Kramer. Bruckel, Secrest and Kramer, all of '43, played on the outstanding Varsity football teams in 1941-42.

such boys and communicating with the Men's College Admissions Office. The latter will obtain additional information on the boy directly from his school to determine whether the prospect meets entrance standards. The Admissions Office will inform the Alumni Office of the results of this check, and the Alumni Office in turn will inform the alumnus who proposed the boy's name as a candidate for admission.

There is no lack of sales points on the University, as the prospectus points out: Superb facilities, both educational and athletic, faculty of the highest reputation of whom many are internationally known in their fields, outstanding coaching, a cosmopolitan student body from all parts of the United States, and many more.

Secrest and Rumrill summed it up this way:

"The 'Golden R Program' is frankly a project to build up our athletic teams so that Rochester can enjoy the same high reputation on the playing field that it does in all its other activities. We do not expect nor want to compete with the 'big time' football teams. All of us are strongly in favor of the UR's traditional athletic policy, but we are convinced that within that policy much can be done to attract to Rochester young men who are both good students and good athletes. We do not expect to lure future All-American players, but if we can add six or eight good players each year to the football squad, for example, it would make all the difference between mediocre teams and those which can win a majority of their games within our type of competition.

"The University's administration has done everything we can ask in the way of providing fine athletic facilities, equipment, and coaching. It's up to the alumni to help bring in students who will bring credit to our teams and to Rochester's academic standing, who will be proud to be known as Rochester students, and to whom we can point with pride as Rochester products."

REGIONAL ASSOCIATIONS

BUFFALO

On Sunday afternoon, January 22, the highly successful second annual Eastman Artists Concert was presented by the Buffalo Chapter at Kleinhans Music Hall. Raymond Fiutak, ESM, '43, clarinetist, J. Stanley King, ESM, '32, violist; Joy Detenbeck, ESM, '45, pianist; Squire Haskin, ESM, '35, pianist; Dorothy Cochran, '47, contralto, and Joseph Fortuna, ESM, '35, violinist, contributed their talents to a well-rounded and deeply satisfying program.

Special guests from Rochester included Dr. Isabel K. Wallace, '16, and Miss Ruth A. Merrill from the Arts College, and from Eastman School, Dean Flora Burton, Arthur Larson, registrar, and Raymond Hasenauer, ESM, '29, president of the Rochester Eastman alumni. The audience of more than 200 had an opportunity to meet artists and guests at a coffee hour after the program.

CHICAGO

January meeting of the Chicago Alumnae Chapter was held January 10 at the home of Barbara Larson Schiff, '44. Jean Ross, '47, presented a report of the Alumnae Council meetings she attended in Rochester in October. The group also discussed ways of interesting high school students in the University, the new courses being offered, and plans for the University's Centennial year. Plans for spring include a tea for high school seniors during spring vacation.

DETROIT

Alumnae met for luncheon January 21 at Devon Gables. Verna King Meng, '17, planned the meeting. Future plans include a picnic this summer and a tea for subfreshmen.

The group extends an invitation to any alumnae in the area who have not been contacted to write either to Doris Atanesian Foster, '46, 1014 Church St., or Helen McCord Chapman, 834 West Huron, both in Ann Arbor.

NEW YORK

Ernest D. Ward, '24, is the new president of the Rochester Alumni Association of Greater New York, succeeding Gilbert E. Ault, '18.

At the association's annual meeting, Macdonald G. Newcomb, '11, received the annual gold "R" key in token of his "winning his letter in life," and for his signal achievements in the field of banking. He began his banking career as cashier of the State Bank of Hilton in 1914, and became the bank's president in 1924. He subsequently joined the Federal Land Bank in Springfield, Mass., and was its executive vice-president until he took over his new

job as fiscal agent for all Federal Land Banks last March 1, with headquarters in New York City. The presentation was made by Jacob R. Cominsky, '20, vicepresident and treasurer of the Saturday Review of Literature.

Ward is now manager of advertising and public relations for Best Foods, Inc., New York City. He is a former newspaperman, and for many years was on the news staff of the *New York Evening Post*.

Provost Donald W. Gilbert, '21, Charles R. Dalton, '20, director of admissions, and Peter J. Prozeller, '37, executive secretary of the Associated Alumni, and incidentally a nephew of Macdonald Newcomb, spoke at the annual dinner.

A scholarship benefit bridge held December 3 netted a total of \$213 for the New York Chapter scholarship fund. The party, under the chairmanship of Blanche King Egner, '06, was held in the clubroom of Wanamaker's. Other committee members were Helen Poffenberger Wilkens, '35; Marion Lucius, '32; Halee Morris Baldwin, '44; Floris Lent, '43, and Jean Boleracki, '49.

On February 13, alumnae and alumni met for a dessert social at Midston House. Dr. John Romano, director of the University's psychiatric clinic, spoke on "Emotional Maturity."

Mildred Grant Gariss, '33, and Denise Hirshfield, '48, co-chairmen, planned the evening. Committee workers included Ruth Groves Garnish, '27; Gina Cole Schley, '42; Helen Poffenberger Wilkens, '35; Halee Morris Baldwin, '44; Jean Boleracki, '49; Kathryn Miller Kregg, '29, and Adele Smith May, '16.

Plans are being made for the spring luncheon and annual meeting at the Skipper Restaurant, 160 East 48th St. Helen Poffenberger Wilkens, chairman, has announced that the speaker will be Dr. Khalil Totah of the Arabic-American Foundation.

NEW ENGLAND

At the fall meeting of the New England Alumnae Chapter, at the home of Jeannette Berger Howlett, '30, new officers were chosen. Patricia O'Brien Finch, '43, is the new president and Celeste Schneider Saurwein, '14, will serve as secretary-treasurer.

Betsy Gillette Baker, '45, reported on the Alumnae Council meetings which she attended in Rochester in October. Patricia O'Brien Finch spoke and showed colored slides on her experiences in Japan. Plans were made for a luncheon meeting in February. Assisting the hostess with arrangements for the meeting was Mary Burns Grice, '35.

SCHENECTADY

As an aid in organizing an alumni group in the Schenectady area, an informal party to which all graduates were invited was held February 10 at the home of Albert Shapiro, '44. The committee that planned the party included Lois Anne Bennett, '49; Joan Scanlon Bolander, '47; Robert R. Currie, '48, and Albert Shapiro.

The November meeting of the Schenectady Alumnae Chapter was held at the home of D. A. Constantine McCarty, '46, with Jean Hall Drake, '40, as chairman. William Murphy of the English department of Union College spoke to the group on "Ten Books which Contributed Most to My Life."

Jay Riley Hunt, '47, was hostess to the chapter on December 19. Evelyn Meyers Currie, '45, planned the meeting. Members designed and made Christmas cards for a Schenectady children's home.

S. A. Hamilton of the Schenectady Civic Players spoke at the January meeting which was planned by Barbara Smith, '43. Barbara Taylor Creamer, '45, was hostess. Also in January, a very successful food sale was held under the chairmanship of Dorothy Constantine McCarty assisted by Ernestine Giles, '32.

This spring the group is planning a tea for subfreshmen with Betty Bebb Sager, '45, as chairman, and a musicale with Dorothy Pardi, '45, in charge.

—R—

Niagara Falls Alumni, Alumnae Hosts to Sub-Freshmen; Pattern for Model Meeting Available to Other Groups

High school juniors and seniors in Niagara Falls and vicinity were guests of University alumni and alumnae at a tea for sub-freshmen on January 16. Also among the guests were high school principals, vocational counselors, and class officers of various schools.

In charge of arrangements was Newcomb Prozeller, '39, chairman, assisted by Jean McNeil Sweeney, '42; Agnes McManus Farwell, '28; Aria Van Houton Bastian, '24, and O. Roland Fleming, '22, vice-president of the Buffalo Alumni Association.

Harmon S. Potter, admissions counselor at the College for Men, Dr. Isabel K. Wallace, vocational counselor for women, and Peter J. Prozeller, alumni secretary, represented the University. Earlier in the day Potter and Prozeller visited Niagara Falls High School, Bishop Duffy High School, and LaSalle High School to interview prospective students.

During the tea, Admissions Office personnel, as well as alumni and alumnae, met with students and their representatives to discuss the educational opportunities provided at Rochester. Colored slides of campus scenes were shown.

This was one of a series of alumni-alumnae teas in cooperation with the Admissions Office, for interesting outstanding prospective students in attending the University. A pattern for a model meeting has been drawn up by the University and is available to all alumni and alumnae in any part of the country who wish to take the initiative in organizing such an affair.



At the Niagara Falls tea (from left): Jean McNeil Sweeney, Dr. Isabel K. Wallace, Harmon S. Potter, '38; Newcomb Prozeller, '39, and Mary Lusk Bruce, '35.

—R—

Alumnae Past Presidents Group Meets

Nearly 40 past presidents of the Alumnae Association met in Cutler Union on February 27 to hear Dean Janet Howell Clark recount the significant incidents in the history of the first 50 years of growth of the College for Women. Mrs. C. Luther Fry, trustee of the University and honorary alumna, addressed the group, giving a glimpse of the future of the Women's College. Margaret Neary Bakker, '13, president of the Alumnae Association, presided at the dinner meeting. The Past Presidents Council acts as a sounding board of alumnae opinion and as a means of utilizing the experience of the former presidents.

HOW DID YOUR CLASS DO?

Annual Giving by Classes, College for Men, for Year Ending June 30, 1949

Class	Class Fund Manager	Amount		No. of Con-tributors tributing		Class	Class Fund Manager	Amount		No. of Con-tributors tributing	
		1949	1948	1949	1948			1949	1948		
'54		\$ 100.00	\$ 100.00	1	1	'23	Hoyt S. Armstrong	402.00	191.00	47	23
'81		100.00	100.00	1	1	'24	Warren Allen	455.00	168.00	42	21
'83		7.00	7.00	2	2	'25	Carl W. Lauterbach	1,101.50	1,171.70	64	56
'84		5.00	6.00	1	1	'26	Paul Ribstein	420.00	274.00	31	28
'85	*Ezra Sparlin	30.00	22.00	5	5	'27	John W. Thorne	379.00	385.00	41	31
'86		13.00	35.00	3	4	'28	Nicholas E. Brown	298.00	247.00	36	35
'88		3.00	—	1	0	'29	Hugo F. Teute, Jr.	392.00	196.00	52	26
'89	John B. Howe	275.00	130.00	5	6	'30	Norman M. Howden	347.50	351.00	49	38
'91	Smith Sheldon	215.00	65.00	3	3	'31	Peter J. Braal	561.00	275.00	57	37
'92	John S. Wright	100.00	55.00	6	5	'32	John Martin	388.00	249.00	39	32
'93		40.00	12.00	4	3	'33	Lewis Schauman	366.00	295.00	52	54
'94		39.00	45.00	6	5	'34	Frederick S. Miller, Jr.	398.50	228.50	59	37
'95	Joseph L. Humphrey	70.00	45.00	10	4	'35	Donald McConville	544.50	485.00	64	57
'96	Thurlow W. Buxton	28.00	27.00	5	5	'36	George Dick	443.50	233.00	69	40
'97	Albert Stearns	100.00	50.00	14	7	'37	Robert F. Weingartner	638.00	481.25	91	72
'98	Ralph Webster	218.00	415.00	12	14	'38	Nelson W. Spies	545.00	449.00	76	74
'99	Herbert S. Weet	400.00	197.00	25	18	'39	Frederick A. Nuessle	422.00	222.00	60	46
'00	Clinton R. Lyddon	145.00	103.00	8	10	'40	Frederick J. Martin, Robert Tucker	324.50	303.00	48	54
'01	Eugene Roeser	390.00	288.00	20	15	'41	John Buyck	307.00	231.00	55	45
'02	Ernest L. White	222.00	278.00	16	8	'42	James B. Terry	305.00	257.00	60	46
'03	Joseph R. Wilson	384.00	71.00	13	8	'43	Otto Loyer	344.00	268.50	69	54
'04		26.00	45.00	4	5	'44	G. Edwin Kindig	469.00	513.00	90	122
'05	Arthur L. Stewart	255.00	237.00	10	9	'45	Peter P. Togaalis	250.00	205.00	45	32
'06	Embry C. MacDowell	308.50	215.00	23	13	'46	Henry Gage	163.50	175.00	35	45
'07	George T. Sullivan	230.00	180.00	14	15	'47	Jack Dunlap	287.00	160.00	48	34
'08	Harold E. Akerly	220.00	268.00	22	23	'48	Donald Fisher	355.00	227.62	53	22
'09	Cornelius R. Wright	730.00	475.00	34	26	'49	Harry Nickles	353.00	—	118	—
'10	E. Willard Dennis	568.00	395.00	20	18						
'11	Macdonald G. Newcomb	787.00	377.50	33	29						
'12	C. Storrs Barrows	378.00	255.00	31	19						
'13	James M. Spinning	618.50	395.00	44	32						
'14	Richard Wellington	525.00	550.00	35	27						
'15	Fred A. Ratcliffe	191.00	280.00	16	14						
'16	Sidney C. Adsit	608.00	395.00	38	30						
'17	Howard Henderson	660.00	467.00	24	22						
'18	Leonard Henderson	534.00	338.00	43	36						
'19	David W. Moody, Paul Kreag	518.00	375.00	23	19						
'20	C. Shelton Sullivan	577.00	351.00	26	27						
'21	Basil Weston	373.50	405.00	27	15						
'22	Donald W. Saunders	833.00	758.00	30	43						

TOTAL ALUMNI GIVING

FROM THE CLASSES \$23,134.00 \$18,065.57 2208 1712 56

Special 3,765.00 3,543.80 4

Carried forward from 1948 Fund, Received after July 1, 1948 887.08

TOTAL 27,786.08 21,609.37

*Deceased †In Memoriam

‡Includes Insurance Premiums, Class of 1948 Gift Fund

1949 ALUMNI ANNUAL GIVING FUND CONTRIBUTORS

Fund Manager, Amount, Number of Givers and Per Cent Contributing Shown by Classes

Class 1854
\$100 1 100%
 †Henry Strong

Class 1881
\$100 1 50%
 James S. Watson

Class 1883
\$7 2 50%
 Rev. T. Vassar Caulkins
 George L. Munn

Class 1884
\$5 1 100%
 Dr. George A. Coe

1885—Ezra Sparlin*
\$30 5 100%
 Joseph H. Hill
 Hon. Adolph J. Rodenbeck
 *Ezra Sparlin
 George W. Stedman
 Dr. Charles D. Young

Class 1886
\$13 3 40%
 Prof. Lewis E. Akeley
 Rev. Mitchell Bronk
 William M. Northrup

Class 1888
\$3 1
 Prof. Warren S. Gordis

1889—John B. Howe
\$275 5 55%
 Kendall Castle
 †Harry B. Chase
 E. R. Gilmore
 John B. Howe
 Prof. Henry E. Lawrence
 George H. Parmele

1891—Smith Sheldon
\$215 3 60%
 Charles W. Butler
 Dr. Harold Pattison
 Smith Sheldon

1892—John S. Wright
\$100 6 55%
 Nelson T. Barrett
 Dr. George F. Bowerman
 Dr. Irving E. Harris
 Montgomery E. Leary
 J. B. Warren
 John S. Wright

Class 1893
\$40 4
 Hon. John Knight
 George R. Raynor
 Horace F. Taylor
 Dr. B. W. Valentine

Class 1894
\$39 6
 Rev. C. N. Bertels
 Irving N. Depuy
 †Harry Hooker
 Emil Landsberg
 Rev. Willard S. Richardson
 Rev. Rufus M. Traver
 Dr. Vallance A. Wickens

1895—Joseph L. Humphrey
\$70 10 63%
 Prof. Victor J. Chambers
 R. Andrew Hamilton
 Joseph Lee Humphrey
 *Judge W. C. Kohlmetz
 Robert E. Rogers
 Richard L. Saunders
 Judge Henry D. Shedd
 Rev. Arthur H. Simpson
 George W. VanIngen
 Norman G. VanVoorhis

1896—Thurlow W. Buxton
\$28 5 83%
 Rev. Carl F. W. Betz
 Thurlow W. Buxton
 George H. Leffler
 Rev. W. D. Robinson
 Arthur L. Vedder

1897—Albert H. Stearns
\$100 14 93%
 Arthur R. Anderson
 Curtis W. Barker
 *Rev. George A. Fairbank
 Rowland W. Grimmel
 Albert Gubelman
 William L. Hutchinson
 Herbert R. Lewis
 Alexander M. Lindsay, Jr.
 Hon. Clarence MacGregor
 Robert Salter
 Henry A. Smith
 Albert H. Stearns
 Dr. George M. Thompson
 R. A. Witherspoon

1898—Ralph P. Webster
\$218 12 85%
 William Betz
 Edward F. Davison
 Clinton M. Flint
 Dr. William F. Frasch
 Hon. James A. Hamilton
 Charles F. Hutchison
 Percival D. Oviatt
 Dr. William Perrin
 Lee J. Rowley
 Edwin O. Terrill
 Colonel Edward Vedder
 Ralph P. Webster

1899—Herbert S. Weet
\$400 25 156%
 Rev. Brewster Adams
 Charles E. Adams
 Calvin P. Bascom
 Don A. Cawthra
 Charles W. Coit
 Arthur W. Collard
 A. F. Dillman
 James E. Forbes
 Elton S. Galusha
 George C. Gordon
 Dr. C. N. Jameson
 W. Martin Jones
 Thomas Kirby
 Thomas P. McCarrick
 Harry R. Moulthrop
 Rev. Robert Pattison
 Nelson Sanford
 Arthur C. Simmons
 Charles C. Stone
 Dr. H. W. Taylor
 William Tompkins
 Fred K. Townsend
 Clark J. Twinn
 Dr. Herbert S. Weet
 Edwin O. Wilson

1900—Clinton Lyddon
\$145 8 75%
 Frank L. Buell
 Edwin W. Fiske
 Alfred P. Fletcher
 Clinton Lyddon
 Walter G. Parkes
 A. M. Stewart
 George W. Stone
 Fred Stuerwald
 Farley J. Withington

1901—Eugene Roeser
\$390 20 83%
 Dr. Herbert R. Brown
 Walter B. Clark
 Frederick W. Coit
 William P. Cross
 John E. DuBois
 Floyd Fairbanks
 Prin. Edward D. Hardy
 Charles A. Higbie
 Rev. S. Fraser Langford
 G. A. Lawrence
 Charles F. Macon
 Frederick Morse
 H. M. Ramsay

Eugene Roeser
 Dean Lee Simpson
 Rev. H. W. Vodra
 Prof. C. W. Watkeys
 Ray H. White
 Rev. John Whiteman
 R. E. Zachert

1902—Ernest L. White
\$222 16 64%
 Arthur D. Bragdon
 Donald Fred Bronson
 D. Walter Brown
 Bailey B. Burritt
 Herbert W. Davison
 Robert T. Duffy
 Edward F. Feely
 Joseph J. Glass
 Dr. Raymond D. Havens
 Dr. Charles W. Hennington
 C. A. Holmquist
 Oscar K. Johnson
 Arthur E. Kelly
 Manley G. Osterhoudt
 Arthur S. Whitbeck
 Ernest L. White

1903—Joseph R. Wilson
\$384 13 100%
 Robert J. Barker
 I. Brooks Clark
 Frederick S. Holbrook
 †Louis W. Howell
 Herbert A. Lotee
 Judge William F. Love
 George B. Marble
 Alfred Martens
 Clyde Franklin Mason
 Azariah B. Sias
 Prof. Harold S. Stewart
 Arthur R. Tucker
 Frederick Wiedman
 Joseph R. Wilson

Class 1904
\$26 4 44%
 George Fuller
 Prof. James H. Hanford
 Dr. W. Bruce Large
 William E. Smith

1905—Arthur L. Stewart
\$255 10 63%
 Louis J. Bailey
 Trafton M. Crandall
 Raymond C. Keople
 Avery M. Meech
 Edward E. Morris
 Arthur Raynsford
 Arthur L. Stewart
 Judge Marsh N. Taylor
 Frederick Weik
 Theodore A. Zornow

1906—Embry C. MacDowell
\$308.50 23 66%
 Harry W. Bosworth
 Col. Albert Bowen, Ret.
 E. Roy Bowerman
 Dr. Walter A. Calihan
 William C. Clark
 Nelson Corkhill
 Professor Edgar J. Fisher
 Leigh B. Hall
 Charles L. Harris
 William H. Higbie
 Carr G. Horn
 Harry J. Humpstone
 Prof. Howard W. Lyman
 Embry MacDowell
 Jacque L. Meyers
 Walter S. Meyers
 Charles P. Oliver
 Arthur Rathjen
 Robert O. Saunders
 William A. Searle
 Harry J. Simmelink
 Charles A. Simpson
 Martin F. Tiernan

1907—George Sullivan
\$230 14 69%
 Herman M. Cohn
 Benjamin Goldstein
 Ralph E. Harmon

Carl F. W. Kaelber
 Harry C. Michaels
 Dr. Alvah S. Miller
 Dr. George T. Palmer
 Floyd O. Reed
 Harold O. Stewart
 George T. Sullivan
 Earl W. Taylor
 Dr. Edgar G. Thomssen
 Edgar F. Van Buskirk
 Albert Vosburg

1908—Harold E. Akerly
\$220 22 91%
 Harold Akerly
 Arthur H. Allen
 Roy D. Anthony
 Prof. Ernest F. Barker
 Hiram L. Barker
 Dr. Harold deB. Barse
 Harry Bloom
 Edwin H. Brooks
 Walter H. Cassebeer
 Raymond B. Eddy
 Dr. John D. Fowler
 Arthur S. Hamilton
 Curtis D. Hart
 Lloyd R. Kneeland
 Charles D. Marsh
 Charles E. Meulendyke
 Samuel Porter
 Dean T. Pryor
 Prof. Norman H. Stewart
 Harry C. Taylor
 Maurice A. Wilder
 Rev. L. Foster Wood

1909—Cornelius R. Wright
\$730 34 103%
 Sydney Alling
 Carlton F. Bown
 Harvard Castle
 Kash R. Chase
 Harold Crafts
 Edgar M. Flint
 Lemuel H. Foote
 Raymond J. Fowler
 Prof. Albert W. Giles
 E. Harry Gilman
 William C. Hanford
 S. Park Harman
 Roy E. Hills
 A. Barton Holcombe
 Richard Hunt
 Abram Jones
 Dr. Albert D. Kaiser
 Dr. Jacob S. Kominz
 Julius L. Kuck
 Matthew Lawless
 Fred Maecherlein
 Harry A. May
 Frank H. McChesney
 Charles H. Miller
 Norman Nairn
 G. W. Ramaker
 Joseph J. Rosedale
 Edmund P. Schermerhorn
 Harry H. Servis
 Franklin H. Smith
 Raymond A. Taylor
 Walter L. Todd
 Fred E. Van Vechten
 Cornelius R. Wright

1910—E. Willard Dennis
\$568 20 95%
 Hiram W. Barnes
 William M. Bidwell
 Earl J. Bullis
 Francis E. Cassidy
 Edward W. Conklin
 Frank S. Dana
 E. Willard Dennis
 Harold L. Field
 Leopold Gucker
 Raymond J. Kirchmaier
 William H. Lewis
 Donald M. Lewis
 Raymond B. McKinney
 Ernest A. Paviour
 Benjamin A. Ramaker
 Ray Robinson
 Louis J. Summerhays
 George H. Taylor
 William R. Vallance

† In Memoriam

* Deceased

1911
Macdonald G. Newcomb
\$787 33 75%

George F. Abbott
Dr. Walter C. Allen
Dr. Hiram Amiral
William J. Clancy
Otto E. Curtis
Dr. Walter D. Edwards
Rev. Harvey W. Funk
Albert B. Helmkamp
Prof. Ralph W. Helmkamp
Raymond A. Lander
Dr. Ernest Little
Arthur M. Lowenthal
Dr. Donald J. MacPherson
Selden E. May
Dr. David R. Melen
Macdonald G. Newcomb
Judge James P. O'Connor
Frank Osborne
Charles M. Otis
Yale Parce
A. J. Parkin
Richard R. Powell
Thomas H. Remington
Oscar F. Schaefer
George G. Smith
Hamlet A. Smyth
George B. Snell
George W. Spaine
Edward W. Spry
Rev. Hugh W. Stewart
H. Carlisle Taylor
Kenneth C. Townson
Lester O. Wilder

1912—C. Storrs Barrows
\$378 31 107%

Samuel D. Adams
Wheeler D. Allen
C. Storrs Barrows
Rev. Albert Bretschneider
Allen M. Brewer
William D. Conklin
W. Ray Converse
Albert H. Covell
Dr. Harry M. Damon
Rev. Ernest E. Davis
Lewis S. Gannett
Harvey J. Hauck
Oscar L. Kaiser
Harry N. Kenyon
Kern F. Larkin
Dr. Willard R. Line
Henry E. Marks
H. Archibald Mason
Wayne B. Randall
Coy A. Riggs
Milton K. Robinson
Dr. Edward A. Rykenboer
Harold W. Sanford
William A. Schell
Arthur L. Schoen
Arthur See
Charles F. Starr
Charles R. Stephens
Maj. Gen. Albert W. Waldron
Don R. Weller
Edwin Wolcott

1913—James M. Spinning
\$618.50 44 96%

Dr. Harold Alling
William M. Anderson
Howard E. Bacon
Raymond N. Ball
Dr. Paul W. Beaven
H. Dwight Bliss
Harry W. Bloss
Milton E. Bond
John Carey
E. Dana Caulkins
F. Teal Cox
Clinton A. Down
Floyd W. Elliott
Joseph L. Ernst
Charles K. Eves
Leon J. Fish
Hamilton J. Foulds
Azal Gay
Ellis Gay
Swayne Goodenough
Roy H. Hendrickson
J. Jenner Hennessy
Julius C. Kaelber
Carlyle Kennell
Henry F. Kurtz
Bayne C. Leet
Harold Lorie
Willis P. Martin
Edmund W. Moore
Jay Moskowitz

Ernest B. Price
Leo P. Redding
E. Reed Shutt
Francis M. Skivington
Harold W. Soule
James M. Spinning
Dr. Arthur M. Stokes
Frederick Vossler
Franklin W. Wells
Floyd A. Wheeler
Wm. C. Wolgast
Ivan R. Wood
W. Bert Woodams
W. Raymond Yorkey

1914
Richard L. Wellington
\$525 35 88%

Homer G. Anderson
Fred B. Arentz
Dr. Avery Ashdown
Halton Bly
William W. Bouton
Bryant J. Brooks
J. Arthur Connors
Frederick J. Converse
Leo F. Dwyer
Raymond C. Fisher
Walter S. Forsyth
Carl Gilt
Louis Gottlieb
Colba F. Gucker
Clarence Heer
Walter J. Helmkamp
J. L. Hilton Jr.
N. David Hubbell
George F. Hutchison
Julius Kuhnert
Dr. Joseph A. Lazarus
Sidney P. LeBoutillier
*Howard LeRoy
Dr. Abraham Levy
Dr. Howard F. Lewis
George C. Ludolph
Alvin A. Miller
G. Kibby Munson
Dr. Ira M. Olsan
E. Potter Remington
Irvin J. Schoen
Harold S. Swarthout
Richard L. Wellington
Dr. MacNaughton Wilkinson

1915—Fred Ratcliffe
\$191 16 48%

Marion C. Barry
Robert F. Barry
C. Willard Burt
Frederick M. Chesbro
Charles F. Doyle
Leslie E. Freeman
Dr. Emanuel H. Giedt
Dr. Gordon H. Gliddon
Rev. Joseph Grossa
Edward A. Kotary
Clement G. Lanni
Fred Ratcliffe
Robert E. Ross
Rudolph L. Schmidt
Harold Shantz
Frederick Wolters

1916—Sidney Adsit
\$608 38 68%

Sidney C. Adsit
Earl Allen
Clare Anderson
Edwin J. Appel
Frederick W. Armbruster, Jr.
Walter R. Attridge
Joshua Bernhardt
Prof. Arthur G. Bills
Milton A. Block
John H. Clough
Edward S. Cross
Dr. Christopher D'Amanda
Kenneth H. Field
Nathaniel Gold
Isadore Goldstein
*Arthur J. Gosnell
Ezra Hale
Herman J. Halstrick
Charles H. Hawks, Jr.
Paul L. Hill
John A. Lanni
Dr. Martin B. Lehnen
Lawrence C. Lovejoy
Hugh T. McNair
Walter E. Miller
Charles R. Mowris
C. Harold Munson
Dr. Norman Pfaff
Willard Pryor

Walter J. Schiebel
Jacob Schoolar
J. Carl Schulz
Delno G. Sisson
Elmer K. Smith
Paul J. Smith
Dr. Herbert C. Soule
Osmond G. Wall
Herbert Williamson

1917—Howard Henderson
\$660 24 69%

Samuel Berger
Edwin D. Claudius
W. J. Conley
Howard J. Henderson
William F. Holmes
Earl C. Karker
Floyd S. Lear
Dr. Richard Leonardo
Dr. David Mendelson
Glenn C. Morrow
Ellsworth Nichols
Harvey F. Remington, Jr.
John W. Remington
Herman A. Sarachan
Roy R. Snyder
Dr. Roland P. Soule
R. Adm. James B. Sykes,
U.S.N.C.R.
Raymond L. Thompson
Mark A. Van Liew
Rodney L. Williams
Russell B. Williams
George W. Willis
Edwin H. Witney
Wilbur G. Woodams

1918—Leonard Henderson
\$534 43 88%

Dr. Carl Allen
Gilbert F. Ault
Sanford Baker
W. Howard Beach
Wendell E. Borncamp
H. Emmett Brown
Dr. Kenneth I. Brown
William E. Brown
L. Ring Coleman
Harold E. Cowles
*Charles Crouch
Ole N. De Weerd
Hugh S. Dewey
Verne G. Edgcumbe
David L. Ellerman
Ward L. Gerber
Charles L. Gillette
Harold F. Gosnell
Alfred P. Harmon
A. Gould Hatch
Henry W. Hays
Leonard H. Henderson
Frank K. Hummel
Alec G. Kinear
John J. Klein
Chen-Ping Ling
Hugh D. MacIntyre
Donald Marks
Fred E. McKelvey
Louis E. Meinhardt
Arthur A. Melville
Dr. F. Linwood Myers
Douglas A. Newcomb
Edward M. Ogden
Harold J. Peet
H. Dean Quinby
Harold W. Rauber
Dwight L. Riegel
Henry M. Rogers
Goodman A. Sarachan
Dr. Clarence C. Stoughton
Milton R. Whitmore
L. Wayne Woodard

1919—Paul S. Kreag
David W. Moody
\$518 23 92%

Col. Stephen E. Bullock
Bloss D. Chace
Dr. John Detto
Lyle K. Doane
Donald Harris
James A. Jackson
H. F. Jennings
Hon. Kenneth B. Keating
Paul S. Kreag
George W. McBride
James E. McGhee
J. Gerald McLean
Dr. Isadore Messinger
Garson Meyer
Elmer B. Milliman
David W. Moody

George D. Newton
William C. O'Keefe
Otto M. Ostendorf
Solomon Posner
James H. Snyder
Arthur J. Stevens
Leo D. Welch

1920—C. Shelton Sullivan
\$577 26 60%

William G. Arlidge
Monroe A. Blumenstiel
Bernard R. Brown
J. R. Cominsky
Otto W. Cook
Charles R. Dalton
F. J. D'Amanda
E. LaRue Ely
Franklin J. Enos
John T. Ferner
Herbert M. Gosnell
Arthur R. Hutchinson
M. Stuart Hyland
† Richard Long
C. Irving Lusink
Paul S. McFarland
Arthur Munson
Carlyle B. Newcomb
Dwight C. Paul
Robert Reilly
Dr. M. George Scheck
David L. Steidlitz
C. Shelton Sullivan
Wadsworth C. Sykes
Joseph H. Williams
Edward T. Winslow
Henry E. Wondergem

1921—Basil Weston
\$373.50 27 61%

Dorland J. Allen
John W. Baybutt
Dr. Henry Bloom
Michael V. Brindisi
William G. Easton
R. Reed George
Donald Wood Gilbert
Ralph W. Gosnell
William E. Hawley
Charles Hedley
Nathaniel C. Kendrick
Prof. Dwight E. Lee
J. R. Leonardo
Harold H. Levin
Paul A. McGhee
M. Hugh Merson
Frederick W. Orr
H. DeWitt Reed
George F. Rugar
James S. Schoff
H. Earl Spencer
Ellwood H. Snider
Earl A. Uebel
Dwight Vandevate
Basil Weston
William J. Youden
P. J. Alvin Zeller
† Donald J. Anthony
† Harold Glasser
† Max Levine
† Joseph Lipsky
† Thomas Marczynski
† Morgan Jack Rhees
† W. Edwin Van De Walle
† Douglas Wolters

1922—Donald W. Saunders
\$883 30 64%

Rev. Herbert N. Baird
John F. Bush, Jr.
J. Frederick Colson
Raiph A. Eckhardt
O. Roland Fleming
Marland Gale
Dr. Erwin L. Gienke
Frederick W. Haines
James D. Havens
Floyd F. Hovey
David F. Hummel
George H. James
Richard H. Kerbs
Victor E. Kimmel
Dr. Karl A. Kreag
C. John Kuhn
Dr. James M. Markin
Oscar Marth
Asa D. McBride
J. H. Miller
Richard J. Myers
Walter F. Mylacraine
Charles W. Potter
Dr. Raymond Reuter
Charles L. Rumrill

† In Memoriam

* Deceased

1949 ALUMNI ANNUAL GIVING FUND CONTRIBUTORS

Fund Manager, Amount, Number of Givers and Per Cent Contributing Shown by Classes

Donald W. Saunders
Walter L. Schneck
G. Alfred Sproat
Richard D. VandeCarr
Walter V. Wiard

1923—Hoyt Armstrong
\$402 47 63%

Ralph Allen
H. S. Armstrong
Nelson W. Barrett
Walter M. Bennett
Fred Bittner
Angelo Brindisi
Clayton H. Brown
William A. Burdick
Henry F. Burton
Harold K. Bushman
J. Leslie Chilson
R. B. De Mallie
Dr. William H. Dunn
J. Walter Dutton
Newell A. Ferris
Willard M. Green
Eaton Hammond
James Hunt
Clarence S. Justice
Rev. Harry J. Kreider
Dr. Shimo Kuitjian
George A. Lang
Dr. Louis L. Lapi
Comdr. Oscar E. Loeser, Jr.
*Louis Lovegrove
H. Leroy Miller
Dr. Saul Mores
Charles A. Morrison
Dr. Paul R. Noetling
Edward W. Olver
Thomas W. Oliver
Carl D. Ott
Lloyd C. Patchin
Edward M. Pickard
Kenneth B. Popp
Francis K. Remington
Dr. Clarence Shepard
Donald C. Silver
Sanford G. Slocum
Dr. William Sullivan
E-nest W. Veigel, Jr.
Lawrence J. Wagner
Raymond J. Walter
Elmer C. Walzer
George Weber, Jr.
Harlow B. Wheeler
Ira M. Wilder

1924—Warren W. Allen
\$455 42 76%

Warren W. Allen
Hervey Edward Bennett
R. Mervyn Briggs
Dr. William Wallace Dietz
Leo Herbert East
William H. Ewell
Walter W. Fischer
J. Feehan Fitzpatrick
Dr. Nathan Francis
Francis E. Green
G. Dwight Greenfield
Merlin L. Groff
C. Elihu Hedges
Arnold Heicklen
Richard D. Hickox
Elmer J. Hoare
C. Grandison Hoyt
Clarence M. Kasper
Dr. La Moyne Kelly
William M. Lauman
George E. Leffingwell
Harvey J. Lockwood
Dr. P. Frederic Metildi
George E. Milliman
Adrian J. O'Kane
Harry L. Rosenthal
Charles R. Salit
Anthony E. Septinelli
Louis Shnidman
Clarence J. Stady
John A. Sullivan
Dr. Paul K. Taylor
Dr. Wilbur G. Valentine
Edward W. Vick
E-nest D. Ward
Donald B. Warren
Alfred Weeks
Myron R. White
Dr. Isadore Wilinsky

Rudolph C. Wilson
Donald L. Wood
W. G. Zeeveld

1925—Carl W. Lauterbach
\$1,101.50 64 76%

Anonymous
Dr. Jacob Abramow
Phillip J. Barnes
Anthony J. Betten
Rev. Ralph P. Blatt
Mercer Brugler
Charles W. Burgess
John G. Callaghan
George S. Coburn
Charles F. Cole
Dr. Jerome Cowen
Laurence O. DeVoll
Daniel L. Dole
Merrill M. DuBois
Henry Elferink
Dr. Nathan Feldman
David Francis
Rufus E. Fulreader
Dr. R. A. Gallagher
Dr. Thomas Bond Garlick
William B. Gelb
Max Gideonse
E. Blakeney Gleason
James W. Gray
President Richard L. Greene
Edmund T. Grosselfinger
Charles H. Hagadorn, Jr.
Harris B. Hammond
Herbert R. Hanson
Arthur R. Herbert
Herbert Inch
Dr. John W. Jameson
Mitchell C. Jossem
Carl Lauterbach
Dr. George R. Lavine
Dr. Joseph Leone
Dr. Robert F. Lewis
J. Lloyd Lill
Carl W. Luther
Emmet E. Lynn
Albert H. Makin
Elliot A. Maynard
James A. McConnell
Ralph H. McCumber
Donald C. McIntyre
Henry McLarty
Benedict Miller
Maurice H. Nelson
Dr. George H. O'Kane
Dr. William J. O'Neil
Clifford Payne
Maurice B. Pendleton
E. William Place Jr.
Frank A. Saunders
William P. Schulz
John G. Shaw
John K. Shuster
C. Austin Smith
Harold H. Stone
Austin C. Tait
Walter T. Taylor
Dr. Glyndon G. Van Deusen
Frederic Wellington
Valentine H. Zahn

1926—Paul O. Ribstein
\$420 31 48%

Dr. Benjamin H. Balsler
John H. Berman
Harry W. Cleveland
LeRoy Brown Conklin
Glen E. Curtis
Alexander D. Dunbar
Clyde H. Erwin
Vincent Fagan
Henry F. Foote
R. M. Gordon
Kenneth C. Hausauer
Rufus Hedges
Charles W. Joyce
Dr. Rolf E. P. King
Ocran W. Lee
Philip M. Linfoot
Alfred T. Loeffler
Herbert Marth
William McQuat
Frederick Metzinger
Louis M. Nourse
F. John Powell
Herbert D. Rathbun
Paul O. Ribstein

Charles R. Rudolf
Bernard Sanow
David H. Shearer
Norman Stevenson
Harold E. Truscott
William Uhlen
Judge C. Robert Witmer

1927—John W. Thorne
\$379 41 59%

Dr. Harold V. Ackert
John S. Beecher
Roger P. Butterfield
Robert H. Cardew
Bernard H. Dollen
Justin J. Doyle
Paul Emerson
Ogden FitzSimons
Dr. Clifford D. Ford
William F. Frawley, Jr.
Dr. Fred J. Fumia
J. Howard Garnish
Dr. Orrin Greenberg
Dr. Karl William Gruppe
Jacques R. Hammond
Harry R. Henrickson
Earl Hilfiker
J. Lawrence Hill, Jr.
Elision G. Hillengas
Earl B. Hoch
Jacob Kokis
William J. Levine
Gerald A. Lux
Malcolm McBride
Stuart M. Menzies
G. Norman Miller
Dr. Edward J. Mores
Watson C. Patte
Dr. Alexander Petrilli
Milford H. Pratt
Dr. John Shannon
Eric D. Sitzenstatter
E. Payson Smith
Anastase Statius
Palmer H. Teller
John W. Thorne
W. Sydney Titus
Rev. George H. Tolley
Dr. Diran H. Tombouljan
Charles W. Upton
James S. Wishart

1928—Nicholas Brown
\$298 36 55%

Francis Abercrombie
Eugene G. Alhart
M. Selig Apperman
Wesley F. Ashman
Thomas Backus
Edward Rupert Becker
Nicholas Elmer Brown
Donald Robert Clark
Warren Walrath Collamer
Herbert Coombs
Garratt C. Crebbin
David Walter Densmore
Paul C. Durkee
Dr. Samuel Ehre
F. LeRoy Fennell
Kenneth C. Fisher
Dr. Gerard Joseph Grassi
Charles H. Green
Willis J. Henry
Willis Truman Jensen
Mark A. Kreag
Claude Kulp
Charles Tracy Lake
Edward P. Loeser
Rev. W. O. Macoskey
Lowell MacMillan
Dr. Gordon Meade
Hildreth G. Olney
Harold W. Pixley
Robert E. Platt
Dr. John L. Pulvino
Dr. A. J. Tattelbaum
Dr. Raymond L. Warn
W. Howard West
Roger Whitman
Dr. William M. Witherspoon

1929—Hugo F. Teute
\$392 52 58%

William M. Alling Jr.
Dr. Wesley Ashton
Prof. Max Astrachan

Clark Baker
Gerald R. Barrett
Robert Walter Biccum
P. Austin Bleyler
Dr. Earl P. Bowerman
Myer Braiman
George William Buchan
Elton John Burgett
John Deyo Chipp
Dr. Clark H. Dale
Harold Albert Decker
Dr. Raymond Warren DeSmit
Jacob B. DeWeerd
Herbert A. Eby
Dr. David Eichen
Philip Emerson
G. Robert Forney
Forest Alton Frasch
James Hamilton Galloway
Donald Greenwell
Dr. Horace J. Grover
Kenneth Oscar Hamlin
Dr. William Hale Havill
Melvin Leon Hazen
Wm. K. Heydweiller
George H. Hook
Earl John Howard
Oliver Hamilton Hutchinson
Kenneth Mullie Ingison
Matthew Anthony Jackson
Richard Carlisle Jackson
Roy Joseph Lingg
Charles John Metz
Lewis Michelsen
Louis J. Mitchell
Frank Eugene Munson
Dr. Felix Octaviano
Allen H. Ottman
Warren Pierson
David P. Richardson
Bernard Schneider
William A. Smith
Leo J. Tanghe
Hugo F. Teute
Roger P. Vickery
Ernest C. Whitbeck Jr.
Chester M. White
John J. Wilson Jr.
Frederick H. Zimmerman

1930—Norman Howden
\$347.50 49 58%

James K. Albright
Joseph T. Anderson
J. Willis Barrett
Isadore G. Berger
Charles W. Blackmon
William F. Bristol
Robert R. Burrage
Charles E. Cook
James W. Cook
Joseph S. Corsica
Dr. Matthew E. Fairbank
Leo F. Gilman
Dr. Alan M. Glover
Charles F. Gosnell
Samuel I. Grossfield
Paul R. Guggenheim
Allen Hawkins
Robert M. Hennessy
M. Justin Herman
Edward Hoehn Jr.
Norman Howden
Milton Jacobstein
Dr. Joseph J. Kaufman
Gilbert H. Kirby
Robert Knight
Dr. John Kraai
Kenneth G. Kugler
William Lister Lake
Elmer Francis Lalonde
Saul C. Lapidus
Gordon L. Matthews
Graham C. Mees
Gregg J. Merrell
Rev. Grant S. Miller
Robert S. Moll
Gifford P. Orwen
Gilbert J. Pedersen
Dr. Lucius L. Powell
Louis Rappaport
Charles L. Resler
Dr. Richard O. Roblin, Jr.
Miroslav Sichinsky
Angelo J. Syracuse
Rev. George E. Ulp
Donald N. Valkenburgh

Bert Van Horn
Dr. Fred H. Willkens
Leon H. Winans
Dr. Ralph Yeaw

1931—Peter J. Braal
\$561 57 66%

David M. Allyn
A. Ralph Barker
Dr. Karl Burton Benkwith
Byron Brady
Peter J. Braal
Henry E. Brayer
Joseph Buff
William J. Burbridge
Robert S. Burrows
Maurice Cameros
Dr. John Clair Chamberlin
Arthur B. Chappell, Jr.
George W. Coomber
Lawrence L. Culliano
John E. Deming
Robert E. DeRight
Herbert Dietz
Edgar E. Eckam
Carl Edgar Fisher
Keith C. Fowler
Dr. Michael J. Gerbasi
Dr. Andrew J. Giambrone
Wilbur L. Hanks
Jack Harrison
Edwin W. Hart
Dr. George P. Heckel
Dr. Alfred J. Henderson
Alan Hill
Harmon T. Hinchey
Lt. Comdr. Henry A. Imus
Dr. Brownell Jamison
Dr. Lewis A. Klein
Herbert A. Lauterbach
Ralph H. Lewis
Henry J. Martens
Dr. Gerald McGuire
Dr. C. Hamilton Mehrhof
Irving L. Mix
Dr. Robert Moehlman
George R. Morley
Robert G. Ocorr
Donald R. Phillips
Charles W. Pritchard
Joseph S. Rippey
Lloyd A. Schermerhorn
E. Willis Stratton
Dr. George M. Suter
Milton Tatelbaum
Ernest J. Underwood
Floyd S. Updyke
John G. Urbanik
Willard Wadt
Jack Weiner
Lot S. Wilder
Ellsworth J. Wilson
Joseph C. Wilson II
George A. Wishart
Robert J. Zimmerman

1932—John Martin
\$388 39 44%

Paul W. Aradine
Dr. Ralph A. Arnold
George B. Beam
John O. Benz
Louis Briskin
Chester F. Burmaster
James W. Collins
Ruben A. Dankoff
Dr. Charles W. Deane, III
Roy S. Demenint
Jerome E. Doyle
Edward W. Fisher, Jr.
Fred H. Gowen
Dr. Leigh S. Greenfield
J. Elwood Hart
Herbert Heesch
Allen L. King
C. B. King
Frank H. Lines
Howard E. Linscott
John Martin
Paul W. Matheis
Joseph E. Morrissey
Fred R. Myers
Cmdr. Carl Paul Jr.
Melbourne J. Porter
Dr. Max H. Presberg
Frazer D. Punnett
Julius Rock
George W. Sawdey
Emmett J. Schnepf
Arthur W. Schwartz
Norman H. Selke
Hervey J. St. Helens
Paul A. Stewart
Albert H. Thomas

Elvryn W. Thomas
Dr. Herbert Thompson
Knight Thornton

1933—Lewis Schauman
\$381 53 54%

Dr. George K. Anderson
Nicholas Ange
Wesley H. Bahler
Armin N. Bender
J. Nelson Bettner
Julius Bland
L. Gordon Booth
Donald Christie
Weld Conley
Mortimer Copeland
Eli H. Cross
Joseph DiFede
Robert DuBois
Wm. J. Eckert
Charles E. Erdle
J. Robert Fagan
Dr. Thomas R. Forbes
Richard Gardner
Dr. Charles Gay
Clyde M. Gridley
Martin T. Gullen
Charles Hendershott
Dr. Robert A. Hettig
Leland E. Hildreth
Ivan Hilfiker
Willard W. Holbrook
John S. Houseknecht
Arden Howland
Rev. R. Irving Howland
Hyman J. Kaplan
Allan Kappelman
Milton Karz
Harold A. Ketchum
Charles G. Kirby
Walter F. Koloseike
George Leader
George E. Leadley
Sanford H. Levy
G. Carroll Madden
Dr. Elias J. Margaretten
Dr. William J. Messinger
Dr. Robert Metzdorf
Howard B. Mouatt
Truman O. Murrell
Karl T. Naramore
Porter M. Ramsay
Dr. Francis C. Regan
Arnold Rubenfeld
Joseph Scarlett
Lewis E. Schauman
Theodore H. Solomon
Irving Steubing
John L. Tupper

1934—Frederick S. Miller
\$398.50 59 60%

George H. Alexander
Dr. Herman Alpert
A. Buell Arnold
Elton Atwater
William E. Beel
Homer J. Bliss
A. Bernard Blonsky
Grover C. Bradstreet
Dr. Lewis D. Conta
Philip E. Creighton
Dr. Whitney R. Cross
Milton F. Cummings
George H. Darling
Ward Clifton Davis
Edward William De Aoun
Anthony L. Dividio
Charles H. Foster
Richard J. Fox
Dr. Charles M. Furtherer
Robert Moore Harris
Alfred A. Hoffmann
John Christopher Kendall
Maurice F. King
Rev. Robert L. Kress
Dr. Karl F. Lagler
Henry S. Marshall
Lewis H. McGlashan
Karl H. Meng
Frederick S. Miller, Jr.
Francis Milligan
Roland C. Moore
Grantier L. Neville
Joseph L. Noble
Paul E. Norton
William R. Orwen, Jr.
Charles A. Phillips, Jr.
Moe Plaksin
Charles M. Reed
Edward R. Renshaw
Eli Rudin
Martin Salo
Charles B. Scammel

CENTURY CLUB

(Annual Givers of \$100 or more)

45—\$5,250

†Henry Strong, '54
James Watson, '81
Edward Gilmore, '89
John B. Howe, '89
Smith Sheldon, '91
Charles Hutchison, '93
George Gordon, '99
Eugene Roeser, '01
Raymond Havens, '02
William Love, '03
Frederick Wiedman, '03
Joseph R. Wilson, '03
Arthur Stewart, '05
Martin Tiernan, '06
Herman Cohn, '07
Matthew Lawless, '09
Cornelius Wright, '09
E. Willard Dennis, '10
Harold Field, '10
Ernest Paviour, '10
George Abbott, '11
Raymond Lander, '11
Macdonald Newcomb, '11
George Smith, '11
Raymond Ball, '13
Walter Helmkamp, '14
Arthur Gosnell, '16
John Lanni, '16
Edwin H. Whitney, '17
*Charles Crouch, '18
James McGhee, '19
Leo Welch, '19
Frank D'Amada, '20
Wadsworth Sykes, '20
James Schoff, '21
John W. Bush, '22
C. John Kuhn, '22
Charles L. Rumrill, '22
Donald Saunders, '22
E. Blakeney Gleason, '25
Vincent Fagan, '26
Rufus Hedges, '26
Joseph C. Wilson, '31
Knight Thornton, '32
Donald Grover, '35 M

†In Memoriam *Deceased

1949 ALUMNI ANNUAL GIVING FUND CONTRIBUTORS

Fund Manager, Amount, Number of Givers and Per Cent Contributing Shown by Classes

Robert F. Schneider
Lawrence Schooler
Benjamin T. Simmons
Dr. Pincus Sobie
Howard A. Sprout
Robert C. Stewart
Dr. Udell B. Stone
Dr. Charles T. Sullivan
Walter J. Suter
Kenneth L. Tanger
Louis J. Teall
Arthur P. Ticknor
Robert J. Trayhern
Morris C. Veit
Dr. Leonard Weisler
Richard U. Wilson
Dr. C. Russell Witherspoon, Jr.

1935
Donald E. McConville
\$544.50 64 56%

Arthur C. Austin
Howard W. Bartlett
James R. Benford
William P. Blackmon
Lyle A. Bliss
J. Francis Canny
M. Sherman Cotton
Russell E. Craytor Jr.
Dr. Peter P. Dale
Homer S. Davey
E. Paul Dean
Neil H. Duffy
John P. Erdle
Robert J. Exter
Joseph Farbo
Donald B. Fischer
Dr. John Paul Frazer
George B. Gardner
Henry E. Goebel
Dr. Robert B. Gordon
Tom Gorham
Dr. David S. Grice
David L. Gundry
Irving Guttenberg
Dr. James C. Hart
Howard H. Hennington
Neil J. Hickey
H. Orlo Hoadley
Eric B. Insley
Martin M. Josephs
Charles B. Kenyon
Elwin Kneale
George B. Lapham
Paul K. Lemassena
Lawrence F. Luescher
Dr. Charles A. Manuele
Kenneth P. McConnell
Donald McConville
Rev. William H. Merwin
Dr. Charles I. Miller
Millard J. Noonan
Mort Nusbaum
Dr. Abram Pinsky
Dr. Ronald E. Prindle
Dr. Ellis Ring
Dr. Anthony F. Rizzo
† Earl Rubens
Paul G. Schade
Alfred G. Scheible
Irving Senzel
Jacque E. Slone
Richard W. Snow
Raymond V. Spare
Dr. Howard A. Spindler
John A. Stahlbrodt
Charles W. Sutton
Lawrence E. Unger
Donald A. VanStone
Gordon L. Waasdorp
Frederick L. Warder
Robert F. Weller
Raymond J. White
Thomas B. White
Sherry K. Wood
Charles G. Zutes

1936—George Dick
\$443.50 69 49%

John H. Brinker, Jr.
Charles N. Clark
J. Fred Coake
Roger Coakley
Gordon A. Coleman
Dr. Saul Commins
Richard E. Contryman

Edward F. Conway
John W. Corris
Dr. Joseph B. Cramer
George C. Dick, Jr.
Dr. Richard O. Edgerton
Theodore F. Elliott
Frank Ferrari
John F. Flagg
John Q. Flint
Dr. Gilbert Forbes
Dr. Henry H. Forsyth, Jr.
Dean Freiday
Dr. Harold A. Friedman
Donald A. Gaudion
Lee Jay Geismar
Manuel M. Gitlin
Lowell H. Goodhue
George K. Green
Arthur W. Haas
Everett P. Hall
C. Watson Hamilton
Gordon C. Harris
Dr. Rupert A. Havill
Richard Henderson
Arthur Hermann
Rev. Alanson Higbie
W. Kenneth Hovey
Dr. Joseph L. Izzo
Robert M. Jacobs
Curtis L. Kaufelt
George J. Knapp
William F. Lacey
Robert W. Laing
Dr. Howard B. Leve
Ihor Levitsky
Walter Litten
Henry G. Lyon
Donald Macdonald
Mortimer H. Maier
Lewis S. Markham
Milton C. Matthews
Rev. James W. McBride
Stuart Meech
John B. Munson
Dr. W. B. Nixdorf
Herbert A. Norton
Henry J. Putnam
Lt. Col. C. J. Quilter
Wilfrid V. Robertson
Howard F. Rogers
Otto Schaefer
Willard C. Smith
Donald T. Street
Dr. W. George Swalbach
George J. Swarouth
Philip H. Tierney
Dr. Herbert L. Tindall, Jr.
J. Emmett Tune
Robert Walters
Dr. George C. Whitney, Jr.
Maurice A. Wilder, Jr.
Edward H. Yewer

1937—Robert Weingartner
\$638 91 67%

Robert V. Adair
Russel J. Anderson
George A. Bachers
John George Bantel
Donald R. Barber
Donald A. Barnes
Joseph E. Barnes
George F. Barr
Benjamin J. Beach
Dr. Robert J. Bloor
W. Stanley Bloss
Richard E. Border
Albert C. Bracker
Dr. Ivan W. Brown Jr.
Dr. Frederick E. Bryant, Jr.
Leonard C. Buyse
George R. Clark
John Clark
John H. Craft, Jr.
Charles T. Grandall
Myron W. Cucci
W. B. Daly
George S. Day
Darwin G. Erdle Jr.
Cameron Estes
Dr. Michael Ferraro
Dr. Arthur F. Fisher
Everett L. Gardner
John M. Gibbons
James S. Glasgow
Morton S. Goldstein
Robert J. Grabenstetter

Dr. John H. Grossman
Joseph T. Hochstein
Abe A. Hollander
Willard H. Janneck
Frank M. Jenner
Elmer Keller
Ralph A. Kelly
Jack Kerridge
Charles O. King
Donald J. Kridel
Noel H. Kuhrt
Richard S. Lee
Edward Leighton
Mortimer A. London
Robert Maher
John E. Mason
Alfred Maurer
William N. McCleary
Donald S. Meech
Garson Merimsky
Dr. Frederick Moll
William H. Moll
Domenic Morabito
Lowell E. Moss
Elmer W. Myers
William S. Nordburg, Jr.
Dr. Edward J. Palmer
Dr. Edward M. Parkin
Donald Pearlman
Col. Frank S. Perego
Harold C. Perry
James W. Phillips
Warren W. Phillips
Ralph E. Pike
Joseph B. Platt
Peter J. Prozeller, Jr.
Alexander Rakus
Dr. J. Shelton Reed
Charles D. Robeson
Eli Rock
Dr. Charles O. Sahler
Morris Schnidman
Elbert L. Scramton
Norman E. Siems
Leo F. Simpson Jr.
Paul Smith
Edward O. Stephany
Samuel Stratton
Leonard W. Swett
Frank B. Tracy
Arnold N. Vick
Charles Walker
James F. Walters
E. H. Walworth, Jr.
William Webb
Robert F. Weingartner
John Wiegel
Thomas E. Wood
John R. Woolford

1938—Nelson W. Spies
\$545 76 67%

Dr. John L. Alhart
Casper J. Aronson
Franklin O. Baer
Dr. Felix J. Balonek
Elmer E. Batzell
Raymond L. Beeler
William Beene, Jr.
Carl Behrnt
Harold E. Bush
William P. Buxton
Joseph L. Caliri
Scott Callister
Philetus M. Chamberlain
Chester C. Champion, Jr.
Joseph Christ
Edwin W. Cissel
Jay R. Clark
Leonard E. Coger
Dr. Maurice Dankoff
Robert E. Dickinson
William F. Dolke, III
Carl E. Eksten, Jr.
Harwood R. Ellis
Paul F. Fenton
Frank Foote
Louis J. Fortmiller
William B. Freer
Leo A. Geyer
Albert Gilbert
Edward R. Hendrickson
Thomas Hooker
Dr. William M. Jackson
Robert Kaley
Harold M. Kentner
Richard W. Kinney

Morton S. Kircher
John G. MacNaughton
W. C. MacQuown Jr.
William L. Maier
Lester V. Marsh
Charles K. McGurk
Paul H. Menig
Daniel W. Metzdorf
Coleman Meyerhoff
Kenneth R. Miller
F. W. Moffett Jr.
Hugh S. Mosher
Wilbur K. Neuman
Frederick J. Peiffer
Everett L. Perry
Karl Pilger
Matthew J. Pillard
Harmon S. Potter
Frederick I. Price
Angelo J. Rallo
Robert Rice
Dr. William W. Robertson
Wylie S. Robson
Frank Roney
C. Robert Schermerhorn
George H. Schreiner
Edgar M. Shantz
Dr. Fred Sherwood
Oscar Spiehler Jr.
Nelson W. Spies
Harold Steve
Albert Stoffel
Harmon V. Strong
Major Clyde T. Sutton, Jr.
Frank Taylor
Robert B. Taylor
Dr. Allan P. Turner
John R. Utz
Ross G. Weller
William R. Weller
Roy A. Wemett

1939—Fred Nuessle
\$422 60 52%

H. K. Arthur
Myron T. Bantrell
David Z. Beckler
Gordon D. Brady
Orson J. Britton
Dr. Hubert J. Cole
Dr. Robert W. Cordwell
Duane R. Crumb
Dr. Sheldon G. Edgerton
Dr. Victor R. Ellis
Walter D. Erskine
John C. Evans
Lynn Farnen
* Robert Fellows
Morton W. Finch
Max Geldin
Myron Green
Richard C. Hendrickson
Thomas G. Hildebrandt
Kenneth J. Hoesterey
Vere E. Howard
Robert M. Jackson
Robert O. Kahse
A. David Kaiser, Jr.
Donald Ketchum
Joseph Kline
Dr. Jacob Koomen, Jr.
G. Prescott Lane
Dean H. Lapp
Robert Larson
John T. Law
Raymond D. Lewis
Joseph W. McConnell, Jr.
Donald D. McGowan, Jr.
Lansing W. McDowell
William R. McEnroe
Peter G. Meade
Edward F. Mee
Allen F. Mock
C. Burton Newman
Herman C. Nowack, Jr.
Frederick A. Nuessle
Carroll W. Potter, Jr.
Newcomb Prozeller
G. Earl Rich
Edward S. Roat
Herbert Scheuer
Sherry C. Simmons
Walter C. Stugis
Donald J. Sullivan
Leo C. Summermatter
Raymond A. Taylor
Norman J. Timmons

† In Memoriam

* Deceased

Earl J. Van Lare
Robert L. Wells
H. Elwood White
Fred L. Witt
Walter Williams
Harvey A. Wolff
Howard A. Yatteau

1940—Robert Tucker
Dr. Frederick J. Martin
\$324.50 48 39%

L. Franklin Alderman
Dr. David W. Alling
Dr. Peter Brandetsas
Allen M. Brewer
Norman R. Cole
V. Ethan Davis
Howard A. DeLaney
Dr. Ray Dern
Dr. Frank P. DiMarsico
Richard M. Drake
Dr. Robert F. Edgerton
Warner P. Edson
John F. Fox
Robert E. Frazer
Harry Grace
Richard W. Gysel
Dr. Jack A. Hattstrom
William J. Hoot
Dr. Ralph H. Kellogg
David Kelsey
Hamilton H. Mabie
Alan H. Martin
Dr. Frederick J. Martin
Albert A. Mattera
James E. Minges
Edward J. Nagy
Louis C. Nosco
Richard C. Oglesby
Reginald Oliver
Norman Parkhill
Walter C. Paul
Robert F. Paviour
Robert Patterson
Charles C. Perry
Dr. Harry S. Phillips
Robert W. Schuler
A. Albert Shapiro
William T. Sherwood
J. Douglas Sinclair
Donald Smith
Harold J. Stiles, Jr.
Paul Suter
Sherwin H. Terry
Robert Tucker
John L. Wehle
J. Westcott Wright
Wilbur Wright
Raymond W. Yaw

1941—John A. Buyck
\$307 55 48%

Richard M. Bidwell
Kenneth Bloss
Guy Bondi
L. M. Brechbuhl
John Buyck
Dr. C. W. Caccamise Jr.
Emerson Chapin
Elmer M. Conway
Richard Conyne
Warren E. Craumer
Roger E. Drexel
Roger W. Erskine
Edward Flint Jr.
Ivin R. Forman
Dr. Thomas Frawley
Dr. A. John Frymark
Dr. John Richard Geary
William C. Greenwald
William B. Harison
Harry J. Hart
William Holmes
Michael A. Insalaco
William Junker
James Keighley
Donald E. Kern
Sumner P. Lapp
Dr. William H. Liesenbein
Nicholas Marchase
Thomas McCleary
Arthur Mirkin
George M. Mullen
Fred Newhall, Jr.
Wayne Norton
Victor H. Payne
John P. Powell
Robert L. Preston
Delwyn R. Rayson
Robert H. Riggs
William J. Schnacky
Benjamin Shimberg
Dr. William Smith
Richard W. Spears

Frederick W. Steul
David W. Stewart
Peter Stranges
Arthur W. Taff
Richard H. Tullis
Peter Valenti
F. Cameron Van Zile
Dr. Richard E. Walker
Willard A. West
Frederick J. Wolff, Jr.
Richard S. Woods
Frank A. Worner, Jr.
Charles R. Young

1942—James Terry
\$305 60 54%

Alexander D. Angelidis
Edmund J. Baas Jr.
Robert W. Barker
John P. Baumer
Alfred D. Becker
Donald R. Behrens
Dr. Floyd E. Bliven, Jr.
Dr. Franklin Brayer
William Bruckel
Charles F. Coit
Martin G. Cramer
George Darcy
Russell E. Davis
Douglas L. Emond
Robert S. Erickson
Harold Fleischer
William Ginkel
Charles N. Gleason
Robert William Gribben
Robert S. Gurney
Blair A. Hellebush
Donald Hodgman
Robert E. Hospes
Douglas F. Jones
Charles G. Kamin
Alvin D. Keene
Robert W. King
Wilbur Kirchgessner
John Lane
Dr. Lawrence W. Linderberry
Dr. William B. Mason
Roy E. Maurer
Robert M. Murphy
John M. Newell
John L. O'Brien
Robert F. O'Brien
Frank A. Okey
Keron O'Neil
Theodore H. Peck
Dr. Charles F. Post
Philip Price
Charles C. Ransom Jr.
Robert G. Rekers
Eugene F. Richner
Paul C. Rohver
William T. Rudman
Frederick F. Sabey II
Robert P. Smith
Malcolm D. Strong
James B. Terry
Howard S. Thomas Jr.
Dr. Victor P. Totah
Edward L. Valentine
H. Corbin Van Cott
David D. Van Horn
Robert Weinberg
John C. Wellington
Dr. Frederick D. Williams
Robert A. Woods
Richard G. Wyland

1943—Otto Layer, Jr.
\$344 69 68%

Captain Theodore J. Altier
Clarence E. Avery Jr.
Dr. D. S. Baldwin
Harry L. Barrett Jr.
Victor M. Becker
William E. Bleidner
Stuart B. Bolger
Frank C. Brautigan
Joseph S. Brennan
Severn P. Brown
Edward H. Clark
Richard N. Close
Robert W. Coyle
John E. Cranch
Richard E. Fang
John F. Faulkner
Donald A. Forsyth
John Forsyth
Francis E. Fox
Nelson Grabenstetter
Lawrence C. Harris
Warren C. Hennrich
Arthur M. Holtzman
Robert E. Howe
H. P. Kehrer

Francis M. Kelly Jr.
Dr. Robert E. Kennedy
Gordon Kester
Dr. John A. King
Richard Kramer
Warren Kunz
Dr. Herbert Lautz
Otto Layer
Dr. Robert J. McMahon
John C. Mairhuber
Walter H. May
Gerald D. Meyer
Elwyn M. Montfort
Thomas B. Mooney
John F. Murphy
Thomas C. Murray
W. Thomas Newman
Dr. Robert Pekarsky
Dr. Roy J. Philipp
Robert H. Plass
Johnson Potter
William W. Pratt
William J. Raab
George Rentoumis
Jack H. Rutz
Dr. Frank R. Schell
Robert J. Schier
Edward R. Schongalla
Richard B. Secrest
Eugene T. Skelly
Howard W. Smith
Rodney T. Swain
John W. Tarbox
Lt. Norman C. Thomas
George C. Trombetta
Douglas R. Vair
Mario Ventura
William E. Waller
Robert H. Weiser
William A. Wheeler
Harry Wiersdorfer
William Yates
Marshall E. Zinter
Arthur Zwierschke

1944—G. Edwin Kindig
\$469 90 59%

Mark E. Amdursky
Ralph Ameele
Howard E. Bacon
John E. Barber
David W. Bareis
James R. Beall
Charles A. Bergerson
Joseph M. Bonafede
Griffith Bowen
James G. Brandetsas
Phillip W. Braunle
William L. Brice
James W. Brown
Robert E. Brunner
Dr. William C. Caccamise
Daniel Campbell
William J. Carnahan Jr.
Robert B. Carson
Carlos A. Chapman, Jr.
John B. Cherry
Donald Clough
Dr. James Monroe Cole
Richard T. Cook
John S. Crowley
Donald N. Curtis
Patrick J. De Gillis
Peter J. Drago
William L. Engan
Stuart Ferguson
Leonard L. Filippone
Dr. Wallace Font
Dr. William B. Forsyth
Jacob Gair
Jacob Gaudino
William Gavett
J. Edward Gilda
Jerome J. Gillette
Alfred Ginkel
Robert C. Gray
Jack Grossman
Richard R. Haig
Dr. Frederick J. Halik
John W. Handy
Warren T. Heard
William C. Henion
Dr. John E. Horn
Dr. Henry W. Jann
John Keil
Jack W. Kennedy
Dr. John Kennell
G. Edwin Kindig
Dr. Donald R. Koerner
Richard F. Kruger
Edward Langhans
Cyril O. Langlois, Jr.
J. W. Leet
N. Eric Linhof

† Armin Livermore
Robert J. Lockhart
Jerold S. Marks
W. R. Mason
Edward L. Matthews
Gordon C. McCowan
Donald B. Miller
William George Moir
James J. Murphy
Donald E. Newham
William R. Nolan
Dr. Richard J. Nowak
Dean H. Parker
John G. Phillips
James Foster Rex
Mark R. Rosenzweig
George K. Schnable
John F. Schnacky
Irving Siller
John W. Simpson
Dr. F. Miles Skultety
Raymon E. Speth
Gardner Stacy, Jr.
William D. Stewart
C. William Tayler
Jack Tishkoff
Maurice L. Townsend
Arthur Underwood
Dr. James R. Vaughan, Jr.
Donald G. Warner
Frederick A. Wiedman
George M. Willis
William B. Wyman
Stanley Zolnier

1945—Peter Togailas
\$250 45 38%

John H. Barnard Jr.
James Beach
Walter C. Benzing
Vernon A. Breitenbach
Jerald Bullock
Eldridge S. Cole
John Robert Conway
John R. Corcoran
Ernest Crewdson
Homer R. Deffenbaugh
Richard F. Eissenberg
James K. Feely, Jr.
Alfred Feinman
Robert S. Filsinger
Dr. Wilbur L. Flesch
Allan Gates
Dr. Hyman Goldberg
Frank Gonzales
Dr. Marvin J. Hoffman
Charles H. Hoke
John K. Kintigh
Robert Koch
Ralph R. Lobene
Richard C. Mack
Anthony Malgieri
Edward A. Mason
Alexander L. Mazzia
Marcus W. Minkler
Dr. William L. Parry
Wallace L. Pensgen
Ralph Eyre Peterson
Lt. Eric H. Phinney
Harry J. Pinsky
James P. Rizzo
Dr. William F. Scherer
† Norbert C. Schulz
Walter P. Siegmund
Daniel E. Smith
Richard B. Smith
William F. Smith
Robert M. Stroman
Bernard S. Stukas
Harry Stultz Jr.
Peter Togailas
Hendrick Van Ness
Jack E. Weller

1946—Henry Gage
\$163.50 35 26%

Earl A. Abel
H. Curtis Barber
Howard Beatty
Robert M. Browne
Gorman L. D. Burnett
Earl S. Christman, Jr.
Robert E. Curtis
Thomas Dinsmore
Dr. Arthur H. Dube
Albert J. Elias
Gordon S. Fyfe
Henry H. Gage
Dwight E. Gardner
James T. Henderson
Frederick H. Hoffman
Floyd Inida
Robert R. Jones
John W. Krosse

† In Memoriam

1949 ALUMNI ANNUAL GIVING FUND CONTRIBUTORS

Fund Manager, Amount, Number of Givers and Per Cent Contributing Shown by Classes

Bruce M. Lansdale
Dr. J. D. McMahon
Robert A. Meyer
John E. Morris
Leonard E. Morrissey Jr.
Frederick C. Richner
Roy O. Ryan
Hugh F. Schaefer
Dr. Everett Schocket
James G. Sloman
David M. Smith
Lincoln D. Staughton
Dura W. Sweeney
Dr. James A. Sylvester
Dr. Russell M. Tilly Jr.
Daniel F. Young Jr.
Marshall Waingrow

1947—Jack Dunlap
\$287 48 24%

Francis J. Alberts
Paul M. Auman
Arthur G. Bailey
Joseph E. Bare, Jr.
Richard E. Carlson
Charles R. Daggs
Wilfred J. Dailey
Arthur E. Danese
Donald Diehl
Warren Duerr
Everett L. Dunbar
Jack Dunlap
Robert Eastman
Karl W. Engstrom
William F. Erbeling
Michael J. Esposito
Vincent Fantauzzo
Robert W. Forrester
A. R. Frackenpohl
Lawrence B. Friar
Richard Gardner
William Gay
Tadius J. Gut
Charles Harrington
George F. Harris
Warren M. Haussler
Robert E. Heilbrunn
Stephen Jones
Robert B. Kaman
Edward T. Kern
James Kinney
Peter R. Lyman
Joseph G. Mack
Charles F. Moreland Jr.
Donald S. Nash
George L. Packard
Nicholas T. Parente
John S. Phillipson
Robert P. Plosscowe
Martin S. Reider
John Richmond, Jr.
Karl F. Schoch
Edwin J. Spurgiesz
Herbert Strohson

Franklyn H. Taylor
David J. Werner
Cleo Weschke
Lawrence Young

1948—Donald Fisher
\$355 53 24%

Leonard Altimari
Burton G. Andreas
John Anderson
Jerome Edmund Baier
Graydon Bailey
*Glenn C. Bassett
*Neal S. Bellos
Paul M. Benham
*Curtis J. Berger
James W. Blumer
*Richard J. Bowllan
Robert L. Brent
Arthur Lloyd Bunn
William J. Conley, Jr.
*Robert D. Cowing
*William Coyne
Richard Gosner Creadick
Ames Churchin
*William L. Doerr
*Frank J. Dowd, Jr.
Robert Paul Fedder
Donald Castle Fisher
*George M. Gelsler, Jr.
Robert E. Ginna, Jr.
Peter Lyaal Gucker
David A. Haller, Jr.
Francis R. Hammill, Jr.
*George G. Hart
*Arnold Hebb, Jr.
Joseph D. Helwig
John Richard Hoff
Charles David Hollenbeck
John Denison Hopkins
Walton Livingston Howes
*Norman Levin
*Donald P. Lincoln
*Anthony Liotta
Weston S. McKane
Robert E. Moore
*Gene Moscarel
Robert J. Murphy
*Jack O'Neill
*Philip F. Peterson
*Robert Rosenthal
Donald Sand
*James Louis Stafford, Jr.
Vance B. VanAlstyne
*David Whalen
*George Edward Whitwell
Elliot Wineburg
Peter Michael Woodams
William W. Young
*Roger W. Zaenglein
*Insurance Policy Holders—
Class of '48 Gift Fund

1949—Harry Nickles
\$353 118 37%

Hugh S. Adams
Warren J. Altpeter
Joseph Bansavage, Jr.
Donald M. Barnard
William A. Beach
Leonard G. Bein
Clement O. Bossert
J. Richard Brady
John E. Brady
Paul H. Brainard
Robert H. Breuninger
Ralph J. Brown
Philip J. Buchiere
John W. Cannard
Vance J. Carpenter
Warren S. Clapp
Manuel Cohen
Pincus Cohen
Saul Z. Cohen
Harold J. Cole
Martyn F. Cominsky
Norman W. Conner
Edward William Corsetti
John J. DeVuyst
Thomas E. Doughty
James O. Dungan
Richard H. Eden
Paul J. Eisenheimer
Louis R. Epstein
Danial Fessenden
John Figueras, Jr.
Joseph W. Fisher
Charles H. Fitzmorris
Wallace Forman
Alfred J. Freeman
Jay Marc Friedman
James A. Fullerton
David R. Gair
Frank M. Gangarosa
Joseph Gastel
Robert T. Giuffrida
Dominic A. Grecni
Stanley A. Hamilton
John F. Hanrahan
Robert J. Heier
Robert J. Hoefler
Howard Hoesterey
Robert H. Hudson
Howard William Jennings
Nelson Howard Jorgensen
Robert Joseph Kanka
Joseph Thomas Kirdahy
Ronald Kraftschik
Bernard Kravetz
Harold J. Lee
Bruce Lemessurier
Austin R. Leve
Alvin L. Levin
Harold Levin
N. M. Lieberman
Paul W. Ludwig

James E. Maher, Jr.
Thomas H. McCarthy
Wilton J. McDonald
Martin E. Messenger
Norman Meyer
Kenneth F. Meyers
August Miale, Jr.
Robert L. Michel
Ronald A. Miller
John W. Mills
Theodore F. Morey
Paul J. Mutter
Perry H. Myers
Harry R. Nickles
Donald R. Nolan
Joseph W. O'Neill
John D. Parks
James W. Pelton
Joseph Phillips
Robert Pollard
Elliott Irving Pollock
Charlton I. Prince
Walter J. Randolph
Robert D. Reeves
Henry G. Reuter, Jr.
Major Edward M. Rex
Nathan Rickless
Robert G. Ritter
Myron Robins
John Rowe
Alvin E. Rubin
Howard S. Rupert
William B. J. Sabey
Daniel B. Sass
Bernard J. Schnackey
David Schreiber
Cecil E. Scott
Edward C. Seils, Jr.
Henry Shur
Robert J. Sinnott
Robert C. Smith
George R. Sutherland
Donald Terry
Donald E. Tuites
Sam P. Tummine- Robert E. Uehlin
Robert A. Wegman
Robert J. Weiss
Charles E. Wheten
Grosvenor S. Wich
Warren F. Williams
Roger Williamson
Paul K. Wittig
Herbert G. Wood
Paul M. Wootton
Thomas W. Young

Miscellaneous
\$22 3
Marshall Waingrow,
Graduate School
Charles E. Rowley,
University Extension School
Morey Wantman, Faculty

MEDICAL SCHOOL ALUMNI SCHOLARSHIP AND LOAN FUND

1929
\$250 11 70%

Dr. Jerome Cowen
Dr. Edith E. Emerson
Dr. Jacob D. Goldstein
Dr. Florence S. Hassett
Dr. A. R. Hillman
Dr. John W. Jameson
Dr. Joseph Leone
Dr. P. F. Metildi
Dr. John B. Polansky
Dr. Donald D. Posson
†Dr. Daran Stephens

1930
\$196 10 45%

Dr. Karl W. Gruppe
Dr. Paul M. Levin
Dr. Robert F. Lewis
Dr. Einar Lie
Dr. Claire Cutlin Manwell
Dr. Edward J. Manwell
Dr. Thomas R. Nichols
Dr. Luther W. F. Oehlbeck
Dr. John M. Scott
Dr. Helen Van Alstine

1931
\$176.50 11 33%

Dr. Gerard Grassi
Dr. Grace Loveland
Dr. J. Fletcher McAmmond
Dr. Philip J. Moorad
Dr. Edward B. Nugent
Dr. George Hunter O'Kane
Dr. John A. Shannon
Dr. Moses S. Shiling
Dr. Herbert F. VanEpps
Dr. Willard VanGraafeiland
Dr. Raymond L. Warn

1932
\$339.50 17 55%

Dr. Henry Brody
Dr. Donald V. Cooney
Dr. Samuel Ehre
Dr. Bernard S. Epstein
Dr. Paul A. Ferrara
Dr. Thomas B. Garlick
Dr. Louis A. Goldstein
Dr. Kenneth O. Hamlin
Dr. Donald R. Inslay
Dr. John A. Lichty, Jr.

Dr. Anthony J. Morreale
Dr. Joseph Kerry Newton
Dr. Walter C. Rogers
Dr. Lynn J. Seward
Dr. A. J. Tattelbaum
Dr. Clair E. Troutman
Dr. Robert I. Walter

1933
\$201 13 42%

Dr. Carl B. Alden
Dr. Rudolph Angell
Dr. Earl P. Bowerman
Dr. John J. Breivis
Dr. Peter Cohen
Dr. David Fertig
Dr. William H. Havill
Dr. John Kraai
Dr. Chester H. Lauterbach
Dr. Harold S. Payer
Dr. Alexander Petrilli
Dr. John R. Phillips
Dr. Abou D. Pollack

1934
\$302.50 21 50%
Dr. Sidney Beck

Karl Benkwith
Dr. Karl Benkwith
Dr. George D. Brown
Dr. George Dacks
Dr. Albert Dalton
Dr. Percival A. Duff
Dr. Forest Mansel Dunn
Dr. Allan A. Fisher
Dr. Harry S. Good
Dr. George Heckel
Dr. Albert C. Johnson
Dr. Lewis Arthur Klein
Dr. Michael J. Lepore
Dr. C. Hamilton Mehrhoff
Dr. Frank Meola
Dr. Lawrence J. Radice
Dr. George W. Suter
Dr. Philip Wasserman
Dr. John S. Wolff Jr.
Dr. Frank Wood
Dr. Ralph C. Yeaw

1935
\$302 18 50%
Dr. Donald W. Bover
Dr. Francis B. Carroll
Dr. James F. Conner

† In Memoriam

Dr. Norman Egel
 Dr. Matthew E. Fairbank
 Dr. Edson H. Fuller
 Dr. Michael J. Gerbasi
 Dr. Donald S. Grover
 Dr. Helen Bertha Hart
 Dr. Sidney Leibowitz
 Dr. Edward J. Levenson
 Dr. Gerald McGuire
 Dr. Gordon M. Meade
 Dr. Stanley B. Peters
 Dr. Barney Puglisi
 Dr. Paul E. Rekers
 Dr. Antoinette Rose Parry
 Dr. John R. Williams Jr.

\$223.50 **1936** **60%**
19

Dr. Ralph W. Alexander
 Dr. Achsa M. Bean
 Dr. Charles J. Bobeck
 Dr. Lynn R. Callin
 *Dr. William Connolly
 Dr. William L. Dorr
 Dr. Sidney Feyder
 Dr. Charles F. Gay
 Dr. Carl John Josephson
 Dr. Donald H. Kariher
 Dr. Chris P. Katsampes
 Dr. Charles H. Kosmaler
 Dr. S. Arthur Localio
 Dr. Edwin J. Medden
 Dr. Jane O'Neil
 Dr. Allen A. Parry
 Dr. Max Presburg
 Dr. Francis C. Regan
 Dr. Julius Rock
 Dr. Jean Watkeys

\$113 **1937** **41%**
12

Dr. Joseph K. Bradford
 Dr. Arthur S. Coriale
 Dr. Frederick C. Dennison
 Dr. Proctor P. Disbro
 Dr. Carl Goetsch
 Dr. Robert A. Heltig
 Dr. John A. Olivett
 Dr. George N. Pratt Jr.
 Dr. Monroe J. Romansky
 Dr. Marguerite A. Schafar
 Dr. William John Teufel
 Dr. Stanley W. Widger

\$208.50 **1938** **67%**
20

George K. Anderson
 Dr. Robert H. Cross
 Dr. Clarence E. Dungan
 Dr. George F. Emerson
 Dr. Dudley B. Fitz-Gerald
 Dr. Harvey B. Fitzgerald
 Dr. David S. Grice
 Dr. A. Gordon Ide
 Dr. Ralph F. Jacob
 Dr. Edward K. Kloos
 Dr. Charles I. Miller
 Dr. Frank M. Olrich
 Dr. Robert L. Piercy
 Dr. Jean C. Sabine
 Dr. Harry F. Smith
 Dr. Howard Spindler
 Dr. Edward A. Stern
 Dr. Raymond S. Szatkowski
 Dr. Thomas A. Weaver
 Dr. Philip M. Winslow

\$173 **1939** **58%**
19

Dr. Chester W. B-own
 Dr. Harold M. Clarke
 Dr. James E. Cross
 Dr. Sidney Eisenberg
 Dr. John P. Frazer
 Dr. Andrew J. Frishman
 Dr. Warren E. George
 Dr. Roger A. Harvey
 Dr. Rupert Havill
 Dr. Atlee B. Hendricks
 Dr. Joseph Izzo
 Dr. William A. Phillips
 Dr. Abram Pinsky
 Dr. Ernest W. Saward
 Dr. Mary Steichen
 Dr. William Stiles
 Dr. George C. Whitney
 Dr. Robert J. Willoughby
 Dr. Lawrence E. Young

\$202 **1940** **67%**
22

Dr. Angus M. Brooks
 Dr. Robert L. Corcoran
 Dr. Gilbert Forbes
 Dr. Richard C. Forman

Dr. Henry Forsyth
 Dr. Myron Franks
 Dr. Harold Friedman
 Dr. James P. B. Goodell
 Dr. Alexander Hatoff
 Dr. Robert W. Hurd
 Dr. L. W. Hutaff
 Dr. Howard Leve
 Dr. Robert J. McManus
 Dr. Roger G. Metcalf
 Dr. John Miale
 Dr. Frederic C. Moll
 Dr. Samuel P. Nixon
 Dr. Russell C. Norton
 Dr. S. S. Piacente
 Dr. James Pullman Jr.
 Dr. Albert C. Snell Jr.
 Dr. Arthur C. Stirling

\$104 **1941** **36%**
14

Dr. Robert G. Eisenhardt
 Dr. J. H. Grossman
 Dr. C. S. Hellijas
 Dr. Eleanor N. Humphrey
 Dr. Horace F. Husser
 Dr. Valeska Roziskey Klitgord
 Dr. Charles T. Mann
 Dr. Ruth Oakley
 Dr. Edward M. Parkin
 Dr. Frederick Sherwood
 Dr. Frank P. Smith
 Dr. Theodore Steinhausen
 Dr. Richard Williamson
 Dr. Richard R. Woods

\$163 **1942** **50%**
17

Dr. Elijah Adams
 Dr. James R. Allen
 Dr. William M. Asher
 Dr. Robert W. Cordwell
 Dr. Benedict V. Favata
 Dr. Charles G. Fraser
 Dr. Charles Gaylord
 Dr. Walter R. Kreutzman
 Dr. Ervin Arthur Maurer
 Dr. Oliver R. McCoy
 Dr. Paul Ronniger
 Dr. Albert P. Rowe
 Dr. Seth W. Smith
 Dr. Richard H. Steckel
 Dr. Margaret Sullivan
 Dr. Allan P. Turner
 Dr. Lloyd D. Tuttle

\$214 **1943** **49%**
35

Dr. Martin S. Barnes
 Dr. Raymond G. Benjamin
 Dr. William Boucher
 Dr. Robert A. Bruce
 Dr. John R. Carter
 Dr. S. Farnum Coffin, Jr.
 Dr. Sidney H. Cohen
 Dr. George A. Cohn
 Dr. Norman S. Cooper
 Dr. Janet E. Crawford
 Dr. Frank Di Marsico
 Dr. Robt. M. Dumm
 Dr. W. M. Edmonstone
 Dr. Leonard D. Fenningter
 Dr. John Richard Geary
 Dr. William W. Howe
 Dr. William M. Jackson
 Dr. Ralph H. Kellogg
 Dr. Thomas R. Kirk
 Dr. Warren Kunz
 Dr. Roland B. Laury
 Dr. Petter O. Lindstrom
 Dr. Theodore Glenn Martens
 Dr. Frederick J. Martin
 Dr. James K. Masson
 Dr. Frank W. McKee
 Dr. E. D. Palmer
 Dr. Harry S. Phillips
 Dr. Margaret L. Rathbun
 Dr. Chas. A. Rowe
 Dr. George Swalbach
 Dr. David C. Thurber
 Dr. Charles E. Weber
 Dr. Earl Witenberg
 Dr. Louis J. Zeldis

\$110.50 **1944** **50%**
21

Dr. Mary Jane Bird
 Dr. Franklin Brayer
 Dr. David R. Bryan
 Dr. Charles Caccamise
 Dr. Henry Toole Clark
 Dr. Patricia M. Clark
 Dr. William Lorin Clark
 Dr. Felix M. Cohen
 Dr. Robert W. Coon

Dr. John E. Edwards
 Dr. Dean Fisher
 Dr. Wallace Font
 Dr. Richard Fowler
 Dr. Thomas B. Lawley
 Dr. Lawrence Linderberry
 Dr. Charles F. Post
 Dr. William H. Smith
 Dr. Roger Terry
 Dr. Victor Totah
 Dr. H. B. Van Dusen
 Dr. Richard S. Wilson

\$95.50 **1945** **70%**
22

Dr. David S. Baldwin
 Dr. Muriel R. Benton
 Dr. Floyd Bliven Jr.
 Dr. Michael T. DiRoberto
 Dr. James R. Dineen
 Dr. Anne F. Emmel
 Dr. Lewis Hogg Jr.
 Dr. Howard Joos
 Dr. Charles Kennedy, II
 Dr. Jacob Koomen
 Dr. Herbert Lautz
 Dr. Dickinson Lippard
 Dr. Rudolph C. Matfield
 Dr. Marion E. McDowell
 Dr. Leon L. Miller
 Dr. Jay B. Moses
 Dr. Bernard R. Nebel
 Dr. Roy J. Philipp
 Dr. Menderson W. Phillips
 Dr. David I. Seibel
 Dr. Wellington B. Stewart
 Dr. Alvin Ureles

\$140.50 **1946** **50%**
24

Dr. William S. Abbey
 Dr. Walter H. Abelman
 Dr. Kelly M. Berkley
 Dr. Chauncey G. Bly
 Dr. Robert M. Browne
 Dr. James M. Cole
 Dr. John Colgan
 Dr. Frederick M. Curtiss
 Dr. Charles W. Field
 Dr. William B. Forsyth
 Dr. Dell M. Gray
 Dr. David R. Hawkins
 Dr. John Kennell
 Dr. John A. King
 Dr. Robert B. King
 Dr. Donald Koerner
 Dr. Mitchell S. Madison
 Dr. Norman L. Matthews
 Dr. Edward Taylor Mulligan
 Dr. Richard Nowak
 Dr. Edward S. Rendall
 Dr. Miles Skultety
 Dr. Charles R. Sullivan
 Dr. Eleanor A. Woodbury

\$96.50 **1947** **67%**
32

Dr. Roland F. Beers, Jr.
 Dr. Harvey Blanchet Jr.
 Dr. B. L. Brown
 Dr. Nathan Cedars
 Dr. Richard J. Collins
 Dr. R. G. Daniels
 Dr. Clement A. DeFelice
 Dr. Ray Dern
 Dr. Robert Ehinger
 Dr. Victor Emmel
 Dr. Wilbur L. Flesch
 Dr. Robert E. Gosselin
 Dr. L. Miller Harris
 Dr. Ralph W. Haswell
 Dr. John E. Horn
 Dr. Marylou Ingram
 Dr. John K. Irion
 Dr. David Kominz
 Dr. James V. Maloney, Jr.
 Dr. John S. McRoberts
 Dr. Roger F. Milnes
 Dr. Louise H. Ormond
 Dr. William L. Parry
 Dr. Edith Searles Porter
 Dr. Warren E. Porter
 Dr. Robert W. Saunderson, Jr.
 Dr. William F. Scherer
 Dr. Cornelius H. Sullivan
 Dr. Donald A. Sutherland
 Dr. William Thomas
 Dr. Robt. L. Tuttle
 Dr. George W. Yandell Jr.

\$43 **1948** **27%**
17

Dr. David W. Alling
 Dr. Edward W. Bird

Dr. James Stuart Browne
 Dr. Burton M. Cohen
 Dr. Alexander Earl Dodds
 Dr. Marvin Epstein
 Dr. Edward D. Fuoco
 Dr. Claude Merrill Hard
 Dr. Lucille McM. Heggeness
 Dr. Glenn Eugene Jones
 Dr. Antonio F. La Sorte
 Dr. Ralph Charles Monroe
 Dr. James F. Morris
 Dr. Charles S. Ness
 Dr. Charles M. Ross
 Dr. James L. Secrest
 Dr. James A. Sylvester

**EASTMAN ALUMNI
 SCHOLARSHIP FUND**

\$796.00 **133**

Paul W. Allen
 Dr. Claude M. Almand
 Richard Andrews
 Kenneth L. Ballenger
 Dr. Wayne Barlow
 Victor Bartulis
 Carl Baumbach
 David Berger
 William L. Bergsma
 Roger Boardman
 John Bollinger
 Wallis D. Braman
 Martin C. Burton
 William E. Butler
 William A. Campbell
 Clawson Y. Cannon, Jr.
 John Celentano
 Loren Christensen
 Dr. Leon Dallin
 E. Douglas Danfelt
 Richard Darrohn
 Howard O. Deming
 Eugene U. De Witte
 Eugene Dimond
 Thomas G. Donohue
 Sheldon W. Eschrich
 George A. Foster
 Kent Gannett
 Charles Gigante
 Harold Gleason
 Wallace Gray
 Paul S. Hangen Jr.
 Raymond J. Hasenauer
 H. Klyne Headley
 Charles Hedley
 Arthur W. Henderson
 Wendell Hoss
 Osborne L. Housel
 Frank Hruby, Jr.
 Dr. Robert L. Hull
 Charles F. Hutchison
 T. Scott Huston Jr.
 Clarence D. James
 Allen Jensen
 Homer Keller
 Dr. King Kellogg
 Kent Kennan
 Charles Kent
 Thomas H. Kerr
 Harry L. Kohler
 Anthony Kooiker
 Arthur J. Kufel
 Vitold Kuschleika
 Peter Labella Jr.
 G. Frank Lapham
 George E. Leedham
 Edward Leonard, Jr.
 Eric H. Lewis
 Donald Liddell
 Avery A. Lockner
 Charles A. Lutton
 Donald MacDonald
 Chester D. Mann Jr.
 Carl J. Mann Jr.
 Dr. Sigfred Matson
 Rev. James McBride
 Harold Meek
 William Merchant
 Stanley Mikulewicz
 Joshua M. Missal
 Robert W. Mols
 LeRoy Morlock
 Irving Nathanson
 Charles Nicholls
 Oliver Nixon
 Dr. Paul M. Oberg
 Robert Olson
 Henry F. Osborne
 Willis Page
 Theodore Peterson
 Dr. William Presser
 Alexander Reisman
 Marius Santucci
 C. Benjamin Scammell
 Wilder Schmalz
 Harold Schwab

* Deceased

Helen Marsh Rowe, Phyllis Cary Win Fannie R. Bigelow Awards

HELEN Marsh Rowe, '12, and Phyllis Cary, '50, North Tonawanda, were announced as winners of the Fannie R. Bigelow Memorial Awards at the fourth annual Susan B. Anthony Dinner, sponsored jointly by alumnae and undergraduates on Friday, February 10, in Cutler Union.

Dr. Eveline Burns, noted economist and professor at the New York School of Social Work of Columbia University, was guest of honor. In addressing the group, she paid tribute to the memory of Miss Anthony.

Highlight of the dinner was the presentation of the Bigelow Awards to an alumna and an undergraduate. In announcing the awards, Margaret Neary Bakker, '13, president of the Alumnae Association and first winner of the award, said:

"The undergraduate (Phyllis Cary) chosen by the Susan B. Anthony Committee with Dean Clark, ex-officio, has won the respect and esteem of the faculty, the administration and her fellow students. Her devotion to the college, her intelligent interest in student affairs and her unselfish participation in them have made her a leader among the undergraduates. A chemistry major, she is a Dean's List scholar and a member of Marsiens, senior honorary society. She has found time in her heavy academic program to make an outstanding contribution to campus activities 'because she believes in their value to the college community beyond their purely social worth.' She collaborated on the Student Activity Investigation, an extensive survey of student participation in campus activities, and presented her findings to the Alumnae Council this Fall. She was the originator and editor of the Traditions Book given to freshmen the summer before they enter college. She served as leader of the Freshman Class last year until its regular election of officers. She is president of Munro Dormitory and president of the Inter-dormitory Council."

"The alumna (Helen Marsh Rowe) chosen this year is one known always for her friendliness, enthusiasm and an apparently inexhaustible capacity for doing things. After graduation, she taught, later was married and has two sons and a daughter, all of whom served in the armed forces in World War II. When her older son started kin-



Margaret Neary Bakker (center) presents the Bigelow Tray to Helen Marsh Rowe, alumnae winner of the Bigelow Award, while Phyllis Cary, undergraduate winner, looks on.

dergarten she joined the Parent-Teacher Association of his school, believing parent interest is vital to teaching success. Later she became president of that PTA, president of the Rochester Parent-Teacher Association, and a member of the New York State Board PTA. She was state program chairman for a number of years for the summer sessions of PTA at Cornell. In 1947 she was elected president of the New York State Congress of Parents and Teachers, a position she still holds.

"In the meantime, she was president of our Alumnae Association, president of the Monroe County League of Women Voters, and president of the Rochester Branch of the American Association of University Women.

"Her most recent honor was her appointment on February 2 to the Board of Trustees of the Rochester Public Library."

The undergraduate committee chose Anne Stottler, '50, for honorable mention for the Bigelow Award. Anne, a senior from Drexel Hills, Pa., is president of the YWCA.

Judith Ogden Taylor, '13, headed the alumnae committee for the dinner. Other alumnae committee heads were Bessie Pettis West, '08; Alice Ramsay Hill, '36; Jane Maloney Maher, '41; Jean Conner Ferris, '47, and Beulah Fuller, '08. The undergraduate committee was under the direction of Marie Ostendorf, '50, daughter of Ruth Glidden Ostendorf, '18. Others on the committee were Jacqueline Prussing, '51; Barbara Johnson, '52, and Anne Woodams, '53, daughter of Marie LeMay Woodams, '24.

EASTMAN ALUMNI SCHOLARSHIP FUND (Concluded)

Vernon Sheffield
Clayton F. Shufelt
John J. Silber
Donald Smith
James E. Smith
Jerome C. Smith
Sterling D. Smith
Dr. Robert M. Stevenson
David L. Strickler
Glenn Swan
A. H. Truitt
Wallace Van Lier

Ingram P. Walters
Stephen Webster
Elliot M. Weisgarber
Karl E. Weiss
Prescott Whitney
William Whybrew
Robert H. Willoughby
Frederick Zeller
Mr. and Mrs. Bevington Blakeslee
Mr. and Mrs. Abram R. Boone
Mr. and Mrs. Claude Carlson
Mr. and Mrs. Frank A. Clement

Dr. and Mrs. Anthony Donato
Mr. and Mrs. Edward Easley
Mr. and Mrs. James B. Fisher
Mr. and Mrs. Carl Frank
Mr. and Mrs. Carroll C. Geiger
Mr. and Mrs. George F. Goslee
Mr. and Mrs. Herbert Harp
Mr. and Mrs. Donald Hayden
Mr. and Mrs. Harry M. Jacobson
Mr. and Mrs. Clifford Julstorn
Mr. and Mrs. Philip Kaufman
Mr. and Mrs. Jean C. Kohler

Mr. and Mrs. Clifford Marshall
Dr. and Mrs. Holon Mathews
Dr. and Mrs. Peter Mennin
Mr. and Mrs. Mitchell Miller
Mr. and Mrs. Ralph Moeller
Mr. and Mrs. Earl G. Mueller
Mr. and Mrs. William E. Nelson
Mr. and Mrs. Donald M. Pearson
Mr. and Mrs. James L. Pierce
Mr. and Mrs. Merrell Sherburn
Mr. and Mrs. Robert A. Yost

1949 ALUMNAE ANNUAL GIVING FUND CONTRIBUTORS

Fund Agent Amount, Number of Givers and Per Cent Contributing Shown by Classes

THE COLLEGE FOR WOMEN

1902—Miriam Seligman
\$20 2 67%

Mary Deland
*Miriam Seligman

1903—Eleanor Gleason
\$35 4 57%

Ruth Dennis Burritt
Eleanor Gleason
Evelyn O'Connor
†*Julia Seligman

1904—Mae Lawley Cole
\$66 12 93%

Miriam Bagley Carpenter
*Alice Colby
Mae Lawler Cole
Marie Louise Gallagan
*Emma Lotz Huff
Gertrude Minnie Jones
*Lulu Covey Keople
Eleanor L. Lattimore
Annie Rosenberg Lipsky
Lois A. Reed
Vera Chadsey Twichell
Ellen Gilman Vadas

1905—Helen Rogers Cross
\$32.50 7 64%

*Helen Rogers Cross
Mayme Smith Ederly
*Florence Levis Fisher
*Jane Crowe Maxfield
Gertrude Bancroft Miller
Lavantia Dimick Miller
*Alvalyn Woodward

1906—Ethel Kates
\$88 10 91%

Enid Morris Bates
*Lilian Crafts
*Blanche King Egner
*Charlotte Stone Hooley
*Ethel McKay Kates
*Helen Thomas Kates
Eleanor Lawless
Herma Harkness Shurtz
Clara Williams Stearns
*Leah McParlin Uebel

1907—Emaline Haap
\$25 7 100%

Effie H. Esson
*Emaline Haap
Amy Hardwick Howard
Ethel Rogers
Lucy Higbie Ross
*Florence Russell
*Bessie Pettis West

1908—Dorothy Dennis
\$111 22 116%

Edith Briggs Andrews
*Marian Salisbury Anthony
Sue Taylor Barker
Mary Lane Brewer
Francoise Klein Courtney
Grace Fowler Cropsey
Dorothy Dennis
*Clara Abbott Duncan
*Beulah E. Fuller
Alicia Morey Graham
*Jessie Olney Gurney
*Justine Tiffany Hickok
Ruth Galloway Marsh
Ruth T. Miller
Florence E. Mosher
*Marion D. Mosher
Grace Hall Pratt
Blanche Griffith Savage
*Lillian J. Stoneberg
*Ethel A. Turner
*Ollie Braggins Watkeys
*Ethel Bills Wickens

1909—Mary Moulthrop
\$55 11 85%

Laura Lawless Braisted
Sarah Rilling Corcoran
Frances Henderson Cross
Ruth Jennings Hodge

Isla Slocum Judson
Ruth Maddock
Grace B. McCartney
*Mary A. Moulthrop
*Edna L. Parker
*Esther Sheridan Smallwood
Frederica Warner

1910—Beatrice Tripp
\$202.50 23 88%

Maude A. Allan
Hazel Bascom Aprile
*Elizabeth Farber Barry
*Marion Taylor Bohacket
*Anna L. Colcord
*Katharine Bowen Gale
*Ruth Gilmore Hattersley
Ruth Goodwin
*Corabelle Palmer Hutchinson
Edith Jackson
*Frances Angevine Keefe
Edith M. Lauer
*Lucia Hewitt Lee
Frances Slayton Marble
Hazel Chapman Merriman
*Louise Munson Parkin
Ruth Henderson Peace
Olive F. Pye
Helen W. Richards
Frances Somers Riggs
Alice Challice Robinson
*Lois Turner
Beatrice Rapalje Tripp

1911
Myrtle Cheesman Keith
\$60 13 68%

*Margaret F. Barss
Julia Carman Barton
Ina Eldridge Beach
Marie Crahan Donnelly
*Jessie D. Holloway
Una Hutchinson
*Myrtle Cheesman Keith
Leila A. Martin
Marion MacLean Newhall
*Jennie Fenner Stolbrann
*Marian Maguire Sullivan
*Cora Warrant
Clarice Taylor Williams

1912—Marguerite Castle
\$108 18 62%

*Katharine Halsted Anderson
Martha Betz
*Florence E. Carman
*Marguerite Castle
*Agnes Thistlethwaite Gay
*Edna M. Haggith
Mabel Thomas Jefferson
Marian G. Laley
Adelaide Dodds Larkin
*Dora E. Neun
Edna Pardee
Blanche Corcoran Randall
*Helen Marsh Rowe
*Edith Barker Swigart
Zetta Doolittle Thatcher
Flossie V. Warren

1913—Madeline Madigan
\$100 21 53%

Margaret Neary Bakker
*Edna E. Bayer
*Ruth Brownell Brainerd
*Ruth Wooster Brown
*Carolyn M. Castle
*Edith Allen Haglund
*Alice Booth Holmes
*Carolyn Kintz
*Margaret Weaver Little
Eleanor Bliss Ludington
Madeline A. Madigan
Marguerite Uebel May
Edith Long Obdyke
Louise Haines Riggs
*Irene Larzelere Schouton
*Avadna Loomis Seward
*Alice M. Stevenson
*Judith Ogden Taylor
Lorna Carpenter White
*Elizabeth Dunbar Wright
*Bessie Schooler Yalowich

†Deceased

1914—Laura Battams Davis
\$90 18 47%

*Corrinne Kintz Blair
*Marjorie Hatch Creal
*Bertha Cudebec
Laura Battams Davis
*Muriel Day
Harriet E. Dorman
Ruth Surgenor Gallup
*Pamela Matthews Fields
*Ruth Becker Hanna
Henrietta Bancroft Henderson
*Emily G. Kingston
*E. Virginia Martin
*Mildred E. Murenberg
*Maude Lambert Peterson
*Eulalie A. Richardson
*Helen Hartung Robinson
*Julia L. Sauer
*Helen Seifert Wolgast

1915—Ruth Sargent Miller
\$99 20 97%

Josephine DelaLys Bassett
*Vina Biggart Bezant
*Ethel L. Bloomingdale
*Florence M. Broxholm
Helen Taylor Cannon
Hazel M. Clark
*Winifred Edwards Cleland
Jean Goldstein Cohen
Florence M. Farlow
*Wilhelmina Horn
Alice Collyer Hunnicutt
Doris Hawks Kennell
Rose Curtis Lapham
Ruth Sargent Miller
*Jeanette Kies Moore
*Althea Keys Perry
Isabel Griswold Schrader
*Mabel M. Truesdell
Mary Weaver
Norma Wood Wellington

1916
Mabel Hewlett Gianniny
\$107 19 61%

*Mary Edwards Bacon
Paula Ziegler Baucum
†*Catherine E. Combs
Katherine Smith Connell
Emma Collyer Donlon
*Mabel Hewlett Gianniny
Clara Hoffman Gilt
Charlotte Attridge Harmon
Charlotte Merz Keenan
Emily Cutler Kruger
Elizabeth Marsh
Adele Smith May
Amy Treman Milliman
*Elsie G. Neun
Julia Rogers
*Linda Schneider Thurston
*Isabel K. Wallace
*Susie Marie Williams
*Gladys White Wise

1917
Mabel Hager Ellsworth
\$289 26 79%

*Mildred Bowen Bodette
Pauline Claffey
Nan McGlennon Comstock
*Lorena M. Cooper
Christine DeZutter Covert
*Olive J. Crocker
Ruth McKie Cross
Sarah Rosenfield Ehrmann
*Mabel Hager Ellsworth
Helen Curtis Gilman
*Esther Hale Gosnell
*Josephine Booth Hale
Claire C. Hogan
Esther Olson Hyman
*Jessie Taylor Isles
*Johanna Ramsbeck Kall
*Rubie Bagney Morrison
Dorothy Owen Morrow
*Flora Crombie Pease
*Elberta Hudson Reeve
*Clara Bowen Sage
Jane K. Salter
Isabel Hollister Tuttle
*Sadie Rose Weilerstein

*Life Member

*Helen E. Weston
*Mildred D. Wilcox

1918—Ruth Gentles
\$300 31 66%

Jessie Woodams Barry
Lois Richmond Braggins
Muriel Handy Brown
*Dorothy W. Curtiss
*Esther Hurley deWeerd
Elsa Dossenbach Foulds
Ruth Gentles
*Ruth Otis Gillette
Elizabeth Grover
*Elizabeth Mullan Keil
G. Mildred Kennell
*Margaret C. Klem
Vera Katz Levy
Mabel Orman Lewis
*Dorothy Dobbin Loveland
Evelyn Crouch Menzie
Augusta B. McCoord
Mabel McCoord
*Florence DuFour McNair
*Gertrude Herdle Moore
Clara Harvie Morris
*Ruth Gliddon Ostendorf
*Alice M. Paddock
Inez Beatty Peelle
*Wilma Lord Perkins
*Ernestine Krieger Sasse
*Elizabeth Wagner Slater
*Norma Storey Spinning
*Marie Stone
Leslie Somers Watt
*Florence Wolff

1919—Thelma Sager Smith
\$168 37 75%

Helen Hunt Andrew
*Helen Lawrence Ashbery
*Mildred Benedict Bond
*Florence Lookup Butts
Edna DeNio Carter
Ruth Chamberlain
Ruth M. Christler
*Minerva Thistlethwaite Durfee
Jessie Guinan Eppinger
*Mary Foley
Elizabeth Filkins Gessler
Eleanor Garbutt Gilbert
*Helen K. Goosen
Lucia Gridley
*Beatrice Kaiser
*Margaret Lieber Kirsch
Mabel Ross Kulp
Esther Bentley LeMessurier
*Marion Henckell Levering
Mary White Macaulay
*Honora Miller
Pauline Moore
*Virginia Moscrip
*Dorothy Ovenburg
*Esther Henckell Ratcliffe
*Helen Roblin Roblin
*Otilie Graeper Rupert
*Aurelia Hillman Sanders
Pauline Bohan Seibold
Marion MacPherson Shenk
*Thelma Sager Smith
Alice Morse Snider
Della Allen Somers
*Katharine Van de Carr
*Florence R. Van Hoesen
*Lois M. Walker
Elizabeth Whalen

1920
Eleanor Gregg Kingston
\$144 29 51%

Elizabeth Gay Agnew
Bertha Kannevicher Arlidge
Nellie Matteson Bradley
Minnie Cleaver
*Helen Kennedy Crino
Emily Oemisch Dalton
Margaret Fraser
*Ethel French
Margaret Garbutt Glen
Gladys Tozier Greene
*Irene Hess
*Esther A. Horn
*Ida Thurston Kilgus
*Eleanor Gregg Kingston
Neva Smy Kroha

1949 ALUMNAE ANNUAL GIVING FUND CONTRIBUTORS

Fund Agent, Amount, Number of Givers and Per Cent Contributing Shown by Classes

Doris J. Lamoree
Ruth Rowland Lee
Faith Gillies Leffer
May Barnes Leuty
Emily Sauer Morford
Beatrice MacCargo Padelford
Jane Latimer Reitz
*Mildred Long Reitz
Alta Eastman Rizer
Sarah Saxton Slocum
*Helen Foulkes Sykes
*Emily Otto Trimby
Beulah Watkins
*Gladys Welch

1921

Edith Nusbickel Oviatt

\$171 28 54%

*Merle Kolb Alling
*Helen Upham Bartlett
Marie Hartung Binkley
Esther Callahan
Belmont Thompson Cook
Helen Smith Detwiler
*Eleanor Hicks Edwards
Pauline Fritz
Frieda A. Gillette
Paula Graeper Grant
Mabel Graham Green
*Ruth Hahn
*Lois Paddock Hicks
Thelma Benedict Hyland
Eleanor George Jennings
Ruth Kenyon
Helen Fuller Moshier
Constance Strassenburg O'Keefe
Edith Nusbickel Oviatt
Elizabeth Schleyer
Velnette Suckles
*Frances Barber Starr
*Marjory B. Storey
Irene VonBerge Suddard
Erminie L. Van Dyne
Mildred E. Walter
Hannah Spencer Welton
Helen Spinning Werner

1922—Olive Flint Cornwell

\$185 41 74%

Doris Gillette Anthony
Josephine Sherburne Bassage
Alice Egan Benjamin
Helen Alpiner Blumenstiel
Edith Sheldon Brayer
Edna Butterfield
Caroline Teresi Cerretani
Olive Flint Cornwell
Constance Pratt Dailey
Delora Hopkins Engert
Lois E. Fisher
Ruth Fisher
Catherine FitzGibbon
Mary Fillmore Gardner
Dorothy Griffith
*Sabra Twitchell Harris
Ruth Blaesii Hathorn
Cordelia E. Hewes
Sabra J. Hook
Charlotte Westcott Johnson
Cornelia Grenelle Kerslake
Ethel Brightman Klee
Minna Clifton Lee
*Clara Lee Lockwood
Roberta Peters McFarland
Mildred Brownell Mehlenbacker
*Margaret Tracey Noonan
Janette Parmele
Elessa Prien
Ruth Goldstein Samuels
Carrie Sanford Schulze
*Sara Sedita
Emma Kenning Shea
Eva Rudman Sherman
Stella Sherman Stolley
Mildred Smeed van de Walle
Ruth Loomis Wager
*Dorothy O. Widner
Elizabeth Esley Winchip
Roberta Jennings Winslow
Elizabeth Flagg Zabriskie

1923—Olga Graeper

\$184 33 58%

*Mae Lauterbach Bailey
Margaret Benedict Baker

*Elizabeth Kennedy Benedict
Frances Crombie Brouwer
Marjorie Swarts Brown
H. Marjorie Burnett
Marguerite Schieber Bushman
Beulah Brusie Compton
Bernice Adwen Crone
Frances Hahn Donovan
*Louise Olmsted Ewell
Mildred Hall Gleichauf
Olga Graeper
*Gladys VonDeben Hammond
Ethelynn Gillette Hazen
Carolyne Schiffrin Kaufman
Maude E. Kahler
Mary Alvord Mathewson
Juliet Schooler Levin
Loretta McCarty
Berenice Torpy Meckfessel
Avis Johnson Oehlbeck
Lois Patchen
Rowena King Price
Laura O'Neil Quinlairn
*Eva Weil Ripperger
Mariam Davis Rohl
Marjorie Mandeville Seward
Ruth Wentz Van Ostrand
Belle London Sherman
Violet Jackling Somers
Georgia Lougee Webster
Helen Kies Weston
Frances Greene Wilcox

1924

Dorothy Dumont Schumann

\$253 49 69%

Martha Spinning Ashton
Laura Hockins Bacon
Marion Clark Bailey
Adair Wellington Bartholomew
Margaret Jewell Bennett
Dorothy Lobbett Burdick
Dolores Kellogg Carver
Florence Bradstreet Cooksley
Hazel Kolb Cowles
Alice Kreag DeMallie
Catherine Smith Gibbons
Helen Berman Greenstone
Janice Harrington
Ruth Vanderpool Hubbard
Marjorie Easton Jennings
Eleanor Wilson Johnson
Alice Teute Justice
Adelaide Kaiser
Katherine Kerrigan
Margaret McCormack
Esther McGowan Low
Lillian Scott Miller
Florence Gunson Morse
Arloa K. Neuman
Elizabeth Holman Paddock
Eleanor Rand Place
Ruth Warren Porter
Luella Stacey Posey
Eunice Prien
*Emily L. Rowe
Helen Gosnell Sayres
Helen Middleton Schrieber
Dorothy DuMont Schumann
Marion Weaver Soule
*Katharine Barber Swift
Kate Hale Trahey
Elizabeth Turner
Rose Van Geyt
Phoebe Day Van Riper
Helen Westcott Watson
Margaret Weston
Rosemary White
Marian Booth Wiard
Doris Barnes Wignall
Lucille Rohr Williams
Vera B. Wilson
Marie LeMay Woodams
Rachel Payne Woolston
*Lydia M. Wuensch

1925

Florence Stein Rubens

\$254 53 59%

Gladys Adams
Charlotte Garland Alexander
Marian M. Allen
*Marjorie L. Bickford
Bernice Whitham Brugler
Mildred R. Burton

Mary Channell
Jean Masters Cole
Naomi Hull Carman
Ruth Snider Crossland
Elizabeth Cubley
*Marian Cummings
Edith E. Emerson
Margaret O'Shea Dalbridge
Marian Boddy Englert
Marion Fleck Fabry
Edna Fairman
Harriet Feary
Christine Filkins Jolley
Dorothy Edwards Fraser
Helen Fairman Freeland
Hazel M. Ganiard
Eleanor Foulkes Greene
*Dorothy Fillingham Greenfield
Lura Schanck Hanley
Ruth Tuthill Hoffmeister
Gertrude J. Howe
Jane Mutchler Jones
Virginia Mansfield Kuhn
Grace Green L'Esperance
Ida Watt Lynch
Dorothy Bissell Martin
Margaret O. Meier
Mary Louise O'Reilly
Ruth A. Page
Dorothy Brown Redding
Irma Briggs Rosseutscher
Florence Stein Rubens
Florence Schminke
Margot J. Schuetze
Mildred Scribner
Elsie M. Seward
Helen Frankenfeld Slater
*Pauline Meader Stalker
Marcella Statt
Irene Bush Steinbock
Marion Craig Steinman
*Marion Forristal Sweeney
Florence Fisher Van Slyke
Evelyn Forster Westburg
Leonora Granata Willett
Sally Wile Wissmann
Martha Pratt Wood

1926

Julia McMillen Goodwin

\$160 33 50%

Iris Elizabeth Almy
Julia E. Bishop
Cathorin W. Brown
Marjorie Brownell
Margaret Butterfield
Dorothy Houck Cox
Ruth Otis Denio
Merle Derrenbacher
Emma C. Donk
Dorothy Atkin Duckworth
Mildred Forster
Dorothy Burke Garbutt
Julia McMillen Goodwin
Lois Dildine Harrison
Lucretia Colby Hicks
Ruth Hollander Hill
Beulah Collins Keefe
Elizabeth Wolters Kennedy
Florence Kenyon
*Margaret E. Lang
Marjorie Sidam Lowden
Margaret Foley Madigan
Mabel Esley Matthews
Edna Hewes McMurry
Margaret Merrell
*Flora Miller
Berenice E. Milner
Sallie Metzgar Nagle
Barbara Haslip Robinson
Marion G. Roller
Dorothy Marples Seuffert
Ruth Beecher Wendt
Orrilla Wright

1927—Myrtice Splitt Mault

\$217.50 48 59%

Mabel E. Brockway
Marion Houlihan Brown
Helena Burke
Florence Freeman Collier
Bertha Taylor Crothers
Helen Higgins Davis
Edith Savage Durfee
Mary Fischer
Ruth Groves Garnish

Mildred Gleichauf Gordon
Clara Hamel
Irene Sergeant Hatfield
Helen Allen Hayes
Isabel C. Herdle
Jeannette Hoeffler
Ruth Asmus Howard
Jennie Jacques
Ruth Greene Linfoot
Myrtice Splitt Mault
Mary E. McCarthy
Mary Shedd Miller
Elizabeth Bitter Mitchell
Jessie Kelley Mitchell
Dorothy Abert Morsheimer
Helen Blackburne Power
Clara Husted Present
Annette O'Neil Reed
Elizabeth Roblin
Mary Meagher Schifferli
Jessie Geddes Silberstein
Elizabeth Broadbridge Sinclair
Caro FitzSimons Spencer
Elizabeth Genung Steadman
Frances Channing Steele
Jane Dye Stirling
Helen Tanger
Adelaide Treman Thomson
Ruth Latta Tomboulion
Vera Tweddell
Eva Haines Ulp
*Lucille Miller Van Delinder
Z. Martina Van Deusen
*Marion Maggs Vicinus
H. Janet Weir
Helen E. Whipple
Hazel Wilbraham
Evelyn Newman Wishart
Margaret Young

1928—Mary Ascroft McNall

\$175.50 48 61%

Rose Abramow
Dorothy Andrews
Inez D'Amada Barnell
Marjorie Koninsky Braiman
Virginia Whipple Brooke
Margaret Burdick Burroughs
Alice Purssell Campbell
Lois Chadsey
Marion Kellogg Christie
Antoinette Syracuse Deni
Adelaide Dorn
Ruth Schwolsky Dworski
Phyllis K. Efinger
Jessie Cook Estes
Henrietta Spencer Feeser
Helen Fremd
Mabel Teute Gardner
Agnes Geddes
Marie Mooney Green
*Marian B. Halstead
Alice Peck Hess
Esther H. Holyer
Kathryn Foulkes Jensen
Laura Kellogg
Justine Merrell King
Jessie Hoskam Kneisel
Alice Bark Knubel
Hazel Hilficker LaLonde
Alta Poze Lapidis
Mary Leader Lewis
Mabel McQuat Mann
Mary Ascroft McNall
Annette St. Helens Norris
Mary E. Oemisch
Marian H. Phillips
Dorothy Thayer Pullen
Rose Riwkin
Jessie Suckles
Adelyn Bareis Spitz-Nagel
Geraldyn Baker Storand
Jessie Tinsman
Elizabeth Remington Turpin
Elizabeth Harvey Waldock
Marian Gardner Warren
Louise Gelli Wendt
Helen Scott Wight
Cynthia Gay Wright

1929

Dorothea Michelsen deZafra

\$280 65 67%

Dorothy Forster Abercrombie
Kathryn McGonagle Alfred
Marion Phillips Armstrong

Beatrice Knapp Bassette
 Leona Cook Beck
 Eunice Betten
 Gertrude Wait Bisbee
 Marian Richardson Bleyler
 Hortense E. Cazeau
 Martha Jane Church
 Ruth Moore Clarke
 Jessie M. Cole
 Jean MacMicken Coleman
 Esther Corwin
 Catherine Weggate Dale
 Dorothea Michelsen deZafra
 Florence Sweetnam Dickson
 Pluma Babcock Emerson
 Mildred Worthington Falsioni
 Sarah Woodworth Gay
 Veronica Dollen Goeltz
 Mildred Messinger Goldstein
 Eva M. Gurnee
 Margaret Ball Hallock
 Margaret Easton Hamlin
 Dorothy Fox Heydweiller
 Lois Speares Howe
 Belle Janowsky
 Helen Phillips Johnson
 Evelyn Sheehan Kaul
 Mary Davison Koenig
 Kathryn Miller Kreag
 Elsie East Kyser
 Helen Trahan Lent
 Ruth Maxwell Loomis
 Eleanor Jenkinson Lucia
 Laurette Siebold Magin
 Barbara Culkun Martin
 Alice Morrissey McDiarmid
 Dorothy Wellington McIlroy
 Jean MacLeod
 Virginia Pierpont Miller
 Mary Page Norris
 Anna Stupkiewicz Okuniewicz
 Carmen Ogden Pedersen
 Marian Clarke Powell
 Ruth Haines Richardson
 Margaret Robson
 Elsie Lisser Reckowitz
 Gertrude Zisser Rosenthal
 Marion Leffler Stalker
 Teresa DiMiceli Sloan
 Helen Williams Stevenson
 Hilda Sullivan
 Esther Beckler Tattelbaum
 Helen Kathryn Tobin
 Beulah Stottle Travis
 Edythe Kraatz Tumulty
 Charlotte S. Van Alstine
 Anna Rose Victor
 Agnes Jordan Walter
 Marion C. Warner
 Lolita M. Wilcox
 Lorene Karlskind Zimmerman
 Margaret Hutchinson Zornow

1930—Helen Marks Marth
\$179 48 50%

Michaline Corsica Alaimo
 Loraine Kinney Alden
 Marian Barton
 Abrona Batz
 Ethel St. Clair Baumann
 Florence Reynolds Belknap
 Ruth Young Bentley
 Beatrice Boardman Bibby
 Helen E. Eberle
 Wilma Ehrlich
 Edith Fishbaugh
 Lois Clark Fontaine
 Miriam Fuhrman
 Nancy Bolton Foxton
 Mary Bott Greenfield
 Helen Sergeant Haas
 Lillian Samuelsohn Hersherberg
 Mabel A. Hicks
 Jeanette Wilbur Hitchman
 Jeanette Berger Howlett
 Elizabeth Thulin Hoelscher
 Amelia H. Hood
 Helen Taylor Howe
 Claire Imrie
 Dorothea Van Eenwyk Ingison
 Esther Newman Jenkins
 Frances Kersker
 Adeline Kaman Levine
 Katherine Love
 Helen Marks Marth
 Mary Williams McAmmond
 Dorothea Scheible McConnell
 Helen Geraghty McNally
 Kathryn O'Reilly O'Brien
 Josephine Raepfel
 Gertrude Jones Reber
 Lillian Hallam Remmel
 Margaret Vallance Ritchie
 Beatrice Poulton Rogers
 Harriet Roupp Rowe

Dorothee Kellner Schwartz
 Helma Girotzki Straub
 Irma L. Suess
 Helen Van Alstine
 Margaret Hitchcock Walker
 Helen Zorsch White
 True Wilson
 Mary Wintish

1931—Mildred Cramer
\$188 42 38%

Alberta Tupper Aradine
 Elizabeth Alling Atkin
 Marguerite Heydweiller
 Baumgartner
 Gretchen Eddy Beam
 Dorothy Champney
 Ella Elizabeth Clark
 Mildred Cramer
 Marian M. Day
 Marion Flaherty DeRight
 Patricia Dodge
 Ruth Harmon Fairbank
 Bertha Brewer Ferguson
 Mary Davidson Ferke
 Elma Gormel Garlock
 Ernestine Giles
 Alice Hendrickson Gustafson
 Ethel Gage Heckel
 Beulah Albiker Hilfiker
 Hildegard Petri Jamison
 Elizabeth Scheible Killip
 Edith Bork King
 Hannah Clara Kraus
 Jane Havill Mehrhof
 Geraldine Julian Mermagen
 Katherine LeFevre Miller
 Gladys Grattan Mahler
 Dorothy Mott
 Marie Freer Porter
 Florence Briggs Robin
 Miriam Rotkowitz Rudin
 Kathleen Brady Rudolf
 Mildred Hetzke Sidler
 Phyllis Smith
 Ruth Ries Smith
 Clara W. Spear
 Adelaide Steedman
 Helen Fuller Steenrod
 Ruth Mellor Stevens
 Onnalee Durkee Vaughn
 Anne Aab Weingart
 Muriel A. Wilson
 Phyllis Fulton Young

1932—Anna M. Rauber
\$217.50 42 51%

Doris Adkins
 Beth Manning Anderson
 Betty Rosenberg Berman
 Olga Petrie Burmaster
 Frieda M. Chapin
 Marjorie Williams Chapman
 Helen Cromwell Curtis
 Beulah Woods Deming
 Helen Dildine DeWolfe
 Ruth Doyle
 Jean Minges Duffield
 Edythe Farnham Ely
 Dorothy Brown Fattig
 Janet Brown Fisher
 Dorothy Ehrlich Fleig
 Virginia FitzSimmons Fox
 Jean Watkeys Gardner
 Mary Hart
 Isabel Harper Hawkins
 Dorothy Coffeen Hill
 Gertrude Henderson Horner
 Pearl Whited Howland
 Jean Gabel Jensen
 Grace C. Kimball
 Elizabeth Mears Lauchlan
 Lucille Baird Linscott
 Marian Lucius
 Dorothy Karr Markham
 Mary Kelly Matthies
 Dorothy Sheldon McLeon
 Bessie Posner Miller
 Adelaide Morrison
 Jane Dorn Mosher
 Marion Weston Neun
 Elizabeth Burr Nixon
 Anna Marie Rauber
 Helen Kurlansky Rukin
 Peggy Fisher Shultz
 Helen Bonner Taff
 Dorothy Bachers Tonkin
 Jane Viall
 Helen Wilson

1933—Dorothy Cripps Salo
\$134.50 36 43%

H. Virginia Allen
 Mary Heydwiller Benson

Lulah Vedder Boyce
 Jane Clapp Catalano
 Alice Brown Cesare
 Janet Champney
 Eleanor Long Corlett
 Ruth E. Cripps
 Grace DeSmit Dobbins
 Mary Fisher
 Margaret Goold Frey
 B. Jane Gordon
 Phyllis Holton Gardner
 Mildred Grant Gariss
 Adele Lefkowitz Herz
 Helen Hess
 Emma J. Hughes
 Muriel Foster Hulbert
 Leah Bennett King
 Anna Bullis Koch
 Jane Harper Larmon
 Jeannette Peterson Lathrop
 Marion Ludwig
 Marian LeFevre Manly
 Marian McCarthy
 Gladys Little McGuire
 Edna Muntz
 Lavern Loysen Nolan
 Lois Welker Poelma
 Marjorie Reichart
 Harriet B. Rippey
 Fredrika Morehouse Tandler
 Verona Schenck Tracy
 Ruth Coxford Wolfe
 Dorothy Cripps Salo
 Mildred Randall Stalker

1934—Molly B. Taylor
\$155 26 30%

Frances Clark Beard
 Helen R. Blank
 Dorothy Pearlman Bohm
 Sarah E. Caldwell
 Ruth E. Carroll
 Jean Holton Clarke
 Dorothy VanGraafeiland Connelly
 Ida Cramer
 Marjorie Freer
 Juanita Border Gardner
 Margaret J. Hamilton
 Grace Tuttle Hanks
 Eunice Vass Harris
 Enid Wight London
 Atelia Picciotti Melaville
 Bertha Milbrandt Marsh
 Lucile Einstein Muhlhausen
 Mary Boughton Nugent
 Harriet Decker Reynolds
 Frieda S. Robbins
 Ruth Sparr
 Molly B. Taylor
 Ethel M. Thiel
 Dorothy Tozier
 Marian Redfern Ulp
 Esther French Wilson

1935—Florence H. Jacobs
\$194.50 46 46%

Luella Marsh Babcock
 Roberta Wilder Brockway
 Marian Chamberlain Bruins
 Dorothy Schoenheit Chase
 Ruth Naditz Dankoff
 Mary Lay Davis
 Suzanne Bogorod Dworkin
 Cora Hochstein Feld
 Angelina Polsinelli Ferrari
 Catherine Forster
 Ruth Sitzenstatter Green
 Mary Burns Grice
 Lois Goehringer Hill
 Florence Jacobs
 Elinor Snyder Kappelman
 Bertha Kerstein
 Nancy Form King
 Edith Harman Lapi
 Claire Meyer Leopold
 Elizabeth Mangan
 Catherine Mann
 Monica Mason McConville
 Virginia Luehen Medden
 Helen Neilly Morgan
 Virginia Townsend Miller
 Harriett Naylor
 Mabel Gleason Olney
 Hannah Bargmeyer Pool
 Marion Berger Poze
 Virginia Pammenter Redfern
 Edith Mason Rice
 Ruth Yalowich Rosenberg
 Edna Baschnagel Schauman
 Dorothy Seaman
 Pauline Paulson Spare
 Kathryn Albrecht Smith
 Helen Holly Stiefel
 Marion Sullivan

Janet Surdam
 Helen MacDowell Sutterby
 Mildred Talluto
 Dorothy Hettig Waldeis
 Susan Glover Wantman
 Emily Cockett Warwick
 Chalice Ingelow Weiss
 Helen Poffenberger Wilkens

1936
Margaret Johnston Birrell
\$272 48 55%

Anne Piccarreto Allegro
 Irma Goldstein Angell
 Julia D. Bailey
 Margaret Bailey Benford
 Margaret Johnston Birrell
 Mary E. Cashman
 Mary Jane Winter Clark
 Sylvia Anas Commins
 Ruth Macomber Connor
 Mary Madden Conway
 Ruth Whipple Cross
 Myrtle White Dalgety
 Dorothy Owen Davis
 Marian Jones Dick
 Virginia Ester
 Helen Coopman Ewing
 Margaret Glynn Foster
 Elizabeth Collins Frisinger
 Marjorie Gilles
 Marion Ogilvie Hamilton
 Dorothy G. Harness
 Alice Ramsay Hill
 Grace Storaand James
 Anne E. Johanson
 Muriel L. Jones
 Wilma F. Kujawski
 Ruth Waugh Lloyd
 Suzanne Trimble Lovejoy
 Edith G. Lyon
 Frances Ensing Marks
 Helen J. Martin
 Rae Wyland McIntyre
 Jean Wallace Meyerhoff
 Ruth Esther Miller
 Barbara Ruth Olsan
 Ruth Seebach Parker
 Helen Sage Platt
 Marguerite Smith Robertson
 Helen Hewitt Servis
 Ruth Graves Stahlbrodt
 Stella Strzeziwilk
 Harriet Frank Tattelbaum
 Helen Hatch Taylor
 Betsy Conant Thacher
 Maime DiPasquale Turchetti
 Ellenmae Vieregiver
 Evelyn Hunter White
 Rhea Cook White

1937—Florence E. Lyddon
\$245 46 42%

Elizabeth Von Wiegen Anderson
 Susan Vogt Bender
 Shirley Cohn Brodows
 Dorothy B. Burton
 Mary Romig Clement
 Ann Snyder Corris
 Miriam Klönick Corris
 Doris Bohachet Cox
 Eleanor Collier Cray
 Eleanor Alexander Drake
 Elizabeth Winship Drisko
 Norval Kramer Dwyer
 Eleanor Bauernschmidt Franks
 Harriet Cross Gale
 Leona Edelstein Germanow
 Marya Fryczynska Grossman
 Eleanor Nicholson Humphrey
 Helen Quigley Kalwas
 Katherine Nowack Kentner
 Doris Fellows Kimball
 Mary Toomey Kinsella
 Eunice Mostkov Kroll
 Mary Sadden Lankes
 Gertrude Morley Lines
 Ruth Schlosburg Lowy
 Florence E. Lyddon
 Justine Lynes
 Helen Martin
 Kathleen M. Morrissey
 Ruth P. Oakley
 Janet Goeltz Platzer
 Jean Harding Porrato-Doria
 Ruth Goodman Rand
 Helen M. Shaddock
 Myra Mostkov Schwartz
 Sara Mosher Sheehan
 Elizabeth Galloway Smith
 Jane Stevens
 Eleanor Martin Van Cassele
 Mary Puffer Van Kestern
 Ruth M. Verway

1949 ALUMNAE ANNUAL GIVING FUND CONTRIBUTORS

Fund Agent, Amount, Number of Givers and Per Cent Contributing Shown by Classes

Charlotte Aldridge Villnow
Margaret Doerffel Wassdorp
Eva Wannemacher
Lois Bean Welke

1938

Jane Carhart O'Brien
\$167.50 38 42%

Josephine Hagstrom Agnew
Marjorie Mathes Ashe
Hazel S. Bastian
Louise Sweetnam Baxter
Helen Ancona Bergeson
Ione Hinman Buyse
Rosemary Cherry Carlson
Ruth Lunger Coakley
Eleanor Carson Davis
Josephine DeStefanis Doughty
Mary Dick
Sally Pike Farnum
Elizabeth Forquer
Mildred Ginther
Kathryn Parker Harvey
Shirley H. Houston
Jeanette Ewell Johnson
Ann S. Kelly
Betty Bullen Kendall
Jean Obdyke Kinney
Marjorie Knopf
Margaret Willers Mabie
Jean Griswold Mead
Shirley Duteemple Morabito
Jane Carhart O'Brien
Elsa Reith O'Brien
Jane Rambo Reed
Mabel Kysor Rugg
Jean Graves Scheible
Joann Guggenheimer Schreiner
Rosemary Seiler
Mary A. Sheehan
Ethel Klein Snapper
Jane Winchell Tellier
Ruth Charles Thompson
Margaret Graham Toeppler
Edith Chapman Wemett
Margaret Brunsson Whedon

1939—Norma Doell Miller
\$269 54 40%

Norma Brostedt Abbate
Kathryn Steele Abendschein
Ruth H. Asman
Ruth Levis Berner
Eleanor Simmons Brooks
Betty Worner Brown
Doris Paterson Burges
Betty Dennis Burt
Irene H. Clark
Lois Clark
Janet Alling Conway
Wilma Cooney
Jane Holland Cooper
Lois Swart Crauer
Clemence Stephens Curry
Lois E. Davison
Harriet Brodhead Dowdy
Rose Engelman
Dorothy Fergusson Foland
Onnolee House Fortmiller
Emily Clapp Gillispie
Jeanne Hanson Goodhue
Ruth C. Graves
Anne Schumacher Hammond
Eleanor Robertson Hammill
Josephine Sutton Harby
Bertha Peterson Harper
Faith Niles Hart
Jane Dibble Hildreth
Barbara Barnes Hopkins
Pollee Phipps Hruby
Katherine Polowy Kowba
Frances Roberta Ladd
Dorothy Brandhorst McManus
Eloine Miller McWilliams
Norma Doell Miller
Eleanor J. Moon
Lois F. A. Mueller
Dorothy Copeland Mullen
Bertha Stevens Pierce
Laura Dick Pinney
Margaret L. Rathbun
Ruth Jenks Rauscher
Florence Dunn Richardson
Elizabeth Pierce Schwab
Rosalie Scinta
Dorothy McHenry Searle

Ida Hinman Spies
Jane Wolcott Steinhausen
Margaret Sullivan
Eithel Davis Tripp
Margaret Hewins Waldo
Alice Hauser Ward
Eileen Welch

1940—Helen Gordon

\$226.50 50 50%

Eleanor Stewart Bloss
Catherine West Bryant
Nancy Billingham Countryman
Lillian Altman Courtheoux
Margaret Keller Daniel
Margaret Stebbins Farris
Jean Hamm Forman
Gertrude Robinson Fox
Helen Gordon
Eleanor Hammill
Phyllis Neidig Helfand
Margaret Darcy Heyer
Doris Erskine Hoot
Jean Livingston Horst
Margaret A. Howland
Winifred Courtney Hudak
Sallie Shafer Jackson
Phyllis Probst Johnson
Janet Webster Keyser
Marcella Neuman Kiger
Ruth Anderson Lauterbach
Elsa Lapp
Lois Milburn Lewis
Ruth McGregor
Lorraine Metzman
Martha Hulek Morlock
Ada May Rayton Neary
Ann Olson Neuman
Frances Stevenson Newberg
Pauline Parce Parks
Janet E. Phillips
Margaret McCarthy Pickett
Rachel Foulkes Playford
Ruth Blake Rear
Jeanne Brennan Sargeant
Dorothy Allen Sawyer
Bertha Field Schellberg
Anne Johnston Skivington
Lorraine O. Smith
Mary Sutton Smith
Helen Zimmerman Stewart
Esther Teller Swamer
Ruth Wilcox Ulrich
Lois Holly Van Auken
Verna Volz
Jean Lewis Wallace
Cornie Burton Wiggins
Marjorie Hall Winchell
Alveira Andrews Zelter

1941

Jean Rissberger Slaymaker
\$166 42 47%

Clara Bates Allen
Frances White Angevine
Constance Merwin Anthonson
Rosemary Wood Christ
Beatrice Corn Crawford
Hetty Barth Crapsey
Lorraine Hazen Crider
Elizabeth M. Fisher
Marjorie Van Ryne Fisher
Virginia Ward Forbush
Dorothy Neracker Gabel
Suzanne Sanney Good
Betty Anne Van Arsdale Hale
Ruth Harrington Harvey
Pamela Fahrer MacLeod
Jane Maloney Maher
Jane Marvin
Grace McCormack
Katherine Lapham McCrossen
Carol May McGregor
Doris Willey Milliman
Alice Stevenson Mohr
Fay Muxworthy Peck
Mary Kaczala Phelps
Janet Steve Prostko
Anita Rusk
Doris Lindsay Schauman
Ruth Schmidt
Rhoda Gardner Sherwood
Marjorie Mercure Sinclair
Helen Harper Skinner
Jean Rissberger Slaymaker
Emma Mueller Spielman

Alice Taylor Sutton
Mary Esmonde Kelly Taylor
Jean Prozeller Terry
Alice Hall Todd
Helen Shakeshaft Togailas
Jeanette Rausch Van Patton
Betty Jones Weingartner
Rita Weingartner Williams
Catherine Zaenglein

1942

Helen McDonald Wyland
\$187 56 51%

Elsie Siegl Ashenburg
Marie Vetter Baumer
Charlotte Willey Bergman
Vivian Cranch Burke
Virginia Cocoran Buyc
Elizabeth A. Corbett
Harriet A. Davis
Marlene Falkenheim
Dorothy Longyear Flaherty
Betty Sharpe Foertsch
Irene L. Follette
Winifred Martin Fowler
Verna Frasch
Jean Stewart Friar
Mary Garson Garner
Susan Gordon Goodrich
Barbara Carpenter Grace
Marjorie R. Graham
Betty Walrath Hamilton
Justine Furman Harris
Jean Lincoln Hart
Virginia Biret Herbrand
Janet Stone Holmes
Jane Elizabeth Hulek
Mary Lou Ingram
Gretchen Van Zandt Johnson
Harriet Gallup Jones
Nancy Colgan Kennedy
Jane Ladd
Adeline Sears LaPlante
Jane Beale Lee
Jean Adkins Lefferts
Mary Hawley McCaulley
Ruth Meyer McCleary
Doris Louise Miller
Helen Nyquist Monroe
Martha Powers Moody
Gertrude Scott Nicholson
Laura Baker Palmer
Helen Verian Powers
Catherine M. Quinn
Hortense Bassett Remein
Virginia Reuter
Barbara Stevens Robeson
Virginia Cole Schley
Doris Miller Schmitt
Miriam J. Senzel
Doris E. Smith
Phyllis Craft Smith
Jessie Church Spies
Alison Fry Stewart
Jean McNeill Sweeney
Lillian Parkin Vass
Jaunita Jane Warner
Helen McDonald Wyland
Mary Deffenbaugh Young

1943—Jane Schmitt

\$258 66 61%

Lenora Page Ade
Miriam Nelson Aldridge
Anne David Allen
Yolanda Izzo Barker
Jane Snyder Bogardus
Eleanor Page Bowen
Ellen M. Baist
Elinor Kaufman Baker
Mary Dawson Bausch
Margaret Raynsford Benedict
Doris Johns Cherry
Mary Cooper
Blossom Lackritz Cramer
Hannah Esterman Davies
Mathilde Weig Desmond
Ann Carlton Logan Dickinson
Virginia A. Dwyer
Betty Lasher Ewald
Patricia O'Brien Finch
Betsy Phillips Fisher
Mary Jane Flickenstein
Louise Blamire Fowler
Madeline Gabron
Peggy Lou Davis Gair

Claire Gale
Esther Cohen Germanow
Carol Mantinband Ginsburg
Jessie Dyott Godsey
Ruth L. Goodland
Elizabeth E. Hanna
Louise Heilbrunn
Ann Marie Hery
Helena Brewer Hilfiker
Gladys Greenwood Holtzman
Barbara Hopkins Jones
Catherine D. Jones
Helen Patricia Keefe
Beverly Marks Koval
Floris Lent
Gloria Licastro
Kathleen Maddams Mairhuber
Patricia Aeschliman McGreal
Arlene Lombard Mercurio
Muriel Bullinger Newcomb
Mildred Newhall
Elizabeth Whitney Nicholl
Marjorie Pfaudler
Martha Nichols Rakita
Norma Meyer Reckhow
Eleanor G. Rehili
Jane Gratz Schless
Jane Schmitt
Millicent Boyd Schongalla
Alice Bruce Smith
Barbara E. Smith
Elizabeth Christ Stevens
June Bleyler Terry
Bethune Pink Thomas
Helen Rose Towner
Marjorie Trosch
Betty Dathyn Walker
Nancy Pate Wallace
Margaret Kershner Weber
Janet Elam Weeden
Janice Aiken Whitcomb
Nellie M. Zukaitis

1944—Jean Dinse

\$237.50 59 64%

Sylvia D. Abramowitz
Marion Wert Ameerle
Madeleine Spitz August
Marjorie R. Baker
Agnes Blamer Boucher
Mary Harris Brayer
Lucille Butter Carroll
Jeanne Schlitzer Carson
Helen McCord Chapman
Winifred B. Christ
Marie Zimmerman Costich
Nancy Norris Crawford
Norma Crittenden
Jane Curtiss
Betty Dale
Robin Dennis
Jean Dinse
Ruth H. Donoghue
Anne Slater Dunlap
Betty Bostwick Evans
Barbara Jane Fisher
Doris Woehr Fitze
Betty Exner Flesch
Ruth Keene Forsyth
Mary Babcock Fyles
Betty Ann Giles
Ruth Burritt Greenbaum
Jane Richardson Groth
Kay May Guncheon
Margot Heilbrunn
Mary J. Hudson
Doris Greeno Jones
Dorothy Kuhnter
Therma Grunthal Lerner
Anita Manning Little
Marjorie Sullivan Lowenthal
Celestine Greenwell Malchof
Caroline Boller McKee
Winifred White Morrissey
Sally Murphy
Jane Robertson Petty
Margaret Gilligan Phillips
Jane E. Post
June Anderson Porubek
Dorothy M. Rathmann
Alice Reilly
Sally Ingalls Rohrdanz
Rose Marie Spierza
Stella Scardino
Katherine Carroll Shady
Mary Ellen Kirchner Smith
Betty Sieger

Agnes Lin Sze
Jane Taylor
Ruth Ballard Tilden
Marion Mahar Vaeth
Rosemary Warner
Betty Rosenthal Wile
Ruth Diller Woods

1945—Jean Hamilton
\$149 33 34%

Shirley Dunn Aroesty
Thais Levberg Ashkenas
Mary Kay Ault
Elizabeth Gillette Baker
Dorothy Barry
Betty Pearson Baybutt
Edith Beck
Jane Berggren Blizard
Virginia Sharp Carpenter
Ruth Hudak Chapin
Barbara Balcom Covert
Evelyn Meyers Currie
Ruth F. Darcy
Elizabeth Lockard Davis
Jean Anthony Tischer
Ruth Evelyn Hagger
Jean M. Hamilton
Mary Zingarella Hermans
Virginia Moffat Judd
Marjorie McGregor
Muriel Carrier Meyer
Alice Messinger
Margaret Ramsey Keck
Judith Rebasz
Eunice Lisson Robbins
Beatrice Fox Robenstein
Betty Bebb Sager
Gloria Perryman Shambroom
Jane Thompson
Edith Sumeriski Trybalski
Marion Devendorf Van Laak
Marion Kirch Young
Corrine Rosenkrantz Ziman

1946
Jean Hofferbert Marshall
\$218.50 47 47%

Agnes G. Adam
Betty Lou Widmer Adams
Jane Barhite
Barbara Bishop Bullock
Jean E. Burnham
Margaret Johnston Carlson
Marie Meisel Cedars
Esther Spencer Clark
June Wedell Dailey
Jane Taylor Duerr
Cecile Genhart Dutcher
Marilyn Gorin Feldman
Beverly E. Field
Doris Atanesian Foster
Hazel E. Fyfe
Emily Gilbert
Linda Deming Gosner
Mary Nixon Greenlees
Barbara L. Happold
Betty Moore Heckman
Mary Jane Izzo
Aita Jogi
Rosa Drake Julstrom
Fromel G. Katz
Evelyn Willey Keene
Janet Keller
Doris Hawks Kennell
Judith Taylor Lehmann
Shirley Parmington Madison
Jean Hofferbert Marshall
Dorothy Constantine McCarty
Dorothy Murphy Meade
Ruth Sobel Oppenheimer
Jean Phillips
Nada Blake Phillips
Marian Ragan
Phyllis Renckens
Joanne Bradford Sakrison
Lois Schramm
Sheila Smith
Thelma A. Smith
Doris MacRae Stone
Ina Skuse Thompson
Harriot N. Tucker
Eleanor Kirch Wabnitz
Marie Wegman

1947—Nancy Farnum
\$241.50 56 44%

June Gilbert Alexander
Jean Nichols Barber
Stephanie Henoch Barch
Nancy Bartlett
Martha Bolles
Margaret Bond
Elaine Burk
Jean Gibbin Burnett



Alumnae Fund Committee heads (from left): Violet Jackling Somers, '23, Special Gifts Committee chairman; Ruth Snider Crossland, '25, chairman of fund agents; Jane Cameron, '29, chairman of University-Extension alumnae, and Ruth Oakley, '37, M.D. '41, chairman of Medical School alumnae.

Dorothy M. Cochran
Nancy Levy Cohen
Marjorie Schreiber Combs
Jean Helmkamp Cripps
Mary Emily Dalton
Dorothy Anne Wallace Droser
Carol Farnum
Nancy Farnum
Jean Conner Ferris
Mary Jean Finnegan
Elaine Fischer
Shirley Gray
Margaret Kall Gugel
Julia Page Hafner
Pauline Hansen
Louise Hediger
Helen Aude Hightower
Doris Robinson Jones
Mary Jane Kaiser
Margaret Greene Kindig
Joan Lane
Elizabeth Krihak Lansdale
Elizabeth Larson
Catherine M. Linehan
Esther Levering MacMullen
Joan McLean Mahoney
Marion Comerford Mallory
Joyce Mann
Janice Miller
Ruth E. Miller
Joan Magovern Monaghan
Irene Nowak Nowak
Marjorie Stern Nussbaum
Marjorie J. Park
Polly Pierce Daniel
Susan Moore Pope
Jean Ellen Ross
Elizabeth M. Rowe
Emily Reynolds Saunderson
Carita Cushman Swanke
Barbara Winebrenner Shepard
Shirley Stein Sigel
Annette Ely Smith
Jeanne Davis Smith
Jane M. Stellwagen
Patricia Kelley Summers
Mildred Tausch
Marian Wolf

1948—Patricia Perry Mauro
\$263 58 42%

Margaret Brant Adams

Audrey Jane Altman
Chrisoula Aspridy
Bernice Selma Boyarsky
Esther Brotz
Catherine Bentley Browning
Alice Nemetz Castner
Evelyn Clark
Lois Cook
Kristin Gustavsen Cook
Elizabeth G. Costich
Nilva E. Couetts
Geraldine DeNering
Jane Dibble
Frances DeFresco DiRoberto
Gertrude Neill DuPlessis
Lillian Dyott
Betty French Engan
Nora North Fairman
Pauline Faulkner
Joan Fitzgerald
Evelyn Fleisher
Arlene Gage
Martha E. Gibbs
Vera Semanko Grant
Virginia Haggerty
Evelyn Hessler
Denise E. Hirshfield
Carol Hoehn
Shirley Woodams Hoesterey
Elizabeth Marvin Hudson
Jean Hunter
Marie Monfredo Inda
Mary-Anne Kennedy
Virginia M. King
Lety E. Kirch
Florence Kremer
Rose Velie Lanni
Jean Malcolm
Janet Markham
Patricia Perry Mauro
Ferol Montgomery
Suzanne Naruse
Constance Gordon Oriani
Edythe Parker
Mary Proctor
Marian Ingrao Pukish
Anna Roberts
Dorothy Rosenberg
Jean Parsons Ross
Jean Scardino
Joan Thurston
Irene Tillim

Helen D. Urbelis
Eleanor M. Vock
Carol Wenzel
Pauline Woods
Helen Yarosz

SPECIAL GIFTS
\$130 3

Buffalo Chapter
Augusta Laney Hoeing
Emma Sweet

1949
Ruth I. Weaver
**EASTMAN ALUMNAE
SCHOLARSHIP FUND**
Chairman, Elizabeth
Keenholts Crawford
\$514.75 97

1923
Belle Sernoffsky Gitelman

1924
Hazel Miles Hughes
Catharine Klem Martin
Florence A. Schoenegge

1925
Helen Wilson Ferris
Harriet Sauer Ott

1926
Frances DeWitt Babcock
Elizabeth Hazeltine Gibaud
Gladys Saunders Hall

1928
E'l'a Mason Ahearn
Dorothy Pund Allen
Jane Allen Gray
Edna McLaughlin
Thankful Spaulding
Elvera Wonderlich

1929
Jennie Cossett
Gladys Leventon
Grace Towsley

1930
Marie Keber Burbank
Marion Herriman

ALUMNAE FUND CONTRIBUTORS

Doris Dawson Patek

1931

Lorena E. Austin
Adelaide Hooker Marquand

1932

Beulah Johnson Engert
Dorothy Sutton Kirkham
Edith Rylander
Arline McKague Wagner

1933

Florence R. Borkey
Elizabeth Keenholts Crawford
Hazel Sampson Duncan
Helen Allen Forbes
Wilhelmina Poor
Arline Piper Putnam
Sue Palfi Ramsey

1934

Doris Wuensch Grygo
Rebecca F. Henslee
Jane Gillam Ticknor
Catherine Elizabeth Williams

1937

Barbara Kantzer
Katherine Aultz Keller
Gladys Rosseutscher

1938

Martha Barkema
Luella Howard
Ruth F. Lamoree
Adele Page Manson
Mignon Pesuit
Ruth Taylor Swan

1939

Emmett Lewis
Clara Moore
Roberta Schlosser
Gertrude Pierce Wolpert

1940

Helen J. King
Cecelia Richards Nelson
Eugenia Plewinski
Sally Simmons Williamson

1941

Frances Buxton
Dorothy Dahlberg Cordwell
Lorene Carpenter Field
Beatrice Greeno
Phyllis Hunter Harrison
Sylvia M. Muehling

1942

Elinore L. Barber
Barbara Krancher Barnes
Violet L. Fraser
Arline Hanke
Bonnie Tramp Moeller
Frances Newman
Mary Ellen Brooke O'Neil
Evelyn Goddard Watterson

1943

Louise H. Johnson
Inez L. Nease
Kathryn Finn Ward

1944

Charlotte Stuckel

1945

Lois Hathaway Amsbary
Joy Detenbeck
Shirley Mowry Reichenberg
Yolanda Giuffrida Sauciunac

1946

Jane Albright Thomson
Jean Birchall
Verna M. Brackinreed
Phyllis Edwards
Naomi Schaeffer Goodman
Evelyn Ficarra Gowey
Vera Barden Green
Doris Hardine
Mary Eli Mitchell
M. Elizabeth Townley

1947

Ella Vosburg Cripps
Lora Gahimer
Elizabeth Maloy
Georgia Stieler Murphy
Elizabeth Prokop
Adlyn Kremer Siller
Bernadine M. Thayer

1949

Carol Kahn Wasserman

UNIVERSITY EXTENSION

Emma M. O'Keefe

Chairman

\$417 **105**

1923

Rose E. Sutter

1924

E. Helen MacLachlan
Ethel M. Manchester
Maude I. West

1926

Ferna M. Hubbard
Nellie P. Michelsen
Ethel L. Newman
Mary Lutz Ordway
Bessie M. Walbridge

1927

Ethel May Dunn
Franc Abbey Ebray

1928

Irene G. Meyn
Bertha R. Owen
Irene Quinn
Grace Tanner
Dorothy Voss

1929

Marie A. Ball
Mabel Beach Banning
Caroline Hall Brown
Gertrude Frey Brown
Jane Cameron
Mary Caragher
Truby L. Henry
Hazel Johnson
Elizabeth Middaugh
Anna G. Schafer

1930

Ruth E. Dixon
Alta M. Fisher
Luella Hovey Gahn
Villa Hopkins
Irene Murphy
Ida Kurzrock

1931

Ida M. Campbell
Blanche Dick
Dorothea Kaiser Lortcher
Emma O'Keefe
Mary Quinn
Dora Myers Player
Florence Redding
Marion Hall Smith
Carrie Sonderman
Cora Weeks

1932

Helen C. Addicott
Emma DeLaney
Grace C. Fulford
Clara Leeper
Anna Morrow
Margaret Powell
Marian Smith
Mary E. Wright

1933

Julia Arnett
Bertha E. Cuyler

1934

Helen Corbett Ritz
Minnie A. Booth
Helen Cashman
Ethel M. Collier
Hazel Cox
Grace Line
Emily W. McKibbin
Helen Pettengill
Florence Clark Pitts
Lucille Reuschle
Helene Clark Robinson
Florence Metz Wuergens

1935

Lillian Trombley Brooks
Esther Dunn
Mildred Ehaney
Catherine M. Frank
Elsie Greffrath
Mildred L. Potter
Edna Schaich
Lorette C. Schefinger

1936

Clara G. Albert
Edith B. Colman
Nellie A. MacLane
Elizabeth Schwartz

Alumni-Alumnae Annual Giving 1949 Summary

(Where the donor is a matriculate of two schools, credit for his or her contribution has been given to both schools unless otherwise designated by the donor.)

Alumnae Fund	\$ 8,087.00
Alumni Fund	27,786.08
Medical School Alumni Scholarship and Loan Fund.....	3,203.17
Eastman School Alumni Scholarship Fund.....	1,145.25
	<hr/> \$40,221.50

*Analysis of gifts to the several alumni-alumnae giving funds by classes may be found on Page 13.

University Plays Prominent Role in Alumni Council Conference

Rochester had a prominent part in the District II conference of the American Alumni Council in Atlantic City in January.

Janet E. Phillips, '40, executive secretary of the Alumnae Association, was chairman of the conference, and also is chairman of District II, which includes colleges and universities from six North Atlantic states, the District of Columbia and the Province of Ontario. She is a member of the AAC's national Board of Directors.

Charles R. Dalton, '20, director of admissions of the discussed "The Role of Alumni in Admissions." Peter J. Prozeller, '37, executive secretary of the Associated Alumni, and Ann Bayer, executive secretary of the Eastman School Alumni Association also represented the UR at the session.

1937	1941
Esther Leah Averill Frieda B. Hanf Ruth Clark Huntington Regina K. Kennedy Frances M. Smith Clara G. Walker Madeline M. Weaver Jennie Evershed Zuck	Alma Haessig Amy Mayle Anne Forsay Mohan Regine Seidler
1938	1942
Alice L. Hanvey	Laura M. Brown Grace S. Boulton
1939	1943
Marjorie Bent Bald C. Lucille Carter Elizabeth Santee	Sophia W. Greffrath
1940	1944
Lina Bateman	Clotilda N. Ceresani
	1946
	Gertrude E. Mabee
	1947
	Margaret L. Geyer
	1949
	Marion L. Paduano

Court Team Wins 9, Loses 7; Alexander Scores 201 Points

SCRAPPY, spirited playing in the second half of the season, in which it lost only one of its seven games, gave the Varsity basketball team another winning season, with nine wins and seven defeats.

Returning to the court wars after mid-year exams, the Rochester team scored an unexpected victory over undefeated Rensselaer, and went on to defeat Alfred, Toronto, Hamilton, St. Lawrence and Clarkson, dropping only its game with Allegheny. Lou Alexander Jr., finished the season with 201 points in 16 games, making him the third man in UR basketball history to score more than 200 points in a single season.

Coach Lou Alexander's 19-year record now stands at 180 victories and 95 losses, with only three losing seasons. Ovarations were given at the final game with Clarkson to Co-captains Neil Alexander and Jim Lennox, and Bob Mohlar, who finished their college court careers with that game.

Against such towering court teams as Yale, Dartmouth, and Brown in the first part of the season, the Rivermen, averaging less than six feet per man, were unable to compete on even terms with the tall, experienced Ivy League outfits, but the contests were far from walkaways for the opponents. Other losses were to Oberlin in an overtime game, Alfred, and Buffalo. The Varsity won over RPI, Toronto, Case, Union, and Alfred.

Bob Mohlar, a first-year medical student who played on the Varsity for three seasons, developed into top form this year, and with young Lou Alexander as his running mate at forward, sparked the Rivermen's play. The coach's other son, Neil, was a standout performer at center. Lennox, Chuck Hogan, both set shot specialists, Jack Garnish, and Tom Sarro, also were strong factors in the team's rousing comeback in the latter half of the season.

Prospects for next year are highly encouraging, as a result of the showing of this year's freshman team, which won 10 games out of 12. A key man in the winning campaign of the frosh was Bob Place, of Pittsford, son of E. William Place, '25. Six feet, one inch tall and still growing, the 18-year-old cage player handled much of the rebound work for the yearlings. Other likely-looking youngsters are John (Doc) Hummel, center, B&L Science Scholarship winner from Blue Earth, Minn., who is nearly six feet three inches tall, and Bill Secor, who was the team's leading speed artist. Others are Joe Schliff, Pete Brandetas, Ken Burmeister and Henry Oskamp.

We'll Be Glad

TO HELP YOU . . .

We want to do more than the job of supplying the Homes, Farms, Business and Industrial concerns of this community with dependable, low-cost electric and gas service. We want to help all of them to get the greatest possible benefit from their use of our services. Please call on us for advice, assistance and co-operation.

ROCHESTER GAS & ELECTRIC

Always at Your Service



Kate Hale Trahey, '24, and Marian Booth Wiard, '24, discuss plans for the Alumnae Arbor Day celebration.

Varsity Swimmers Win 7 Meets, Lose 3 For Most Impressive Season in Decade

Its best season since it went undefeated in 1939 was chalked up by the Varsity swimming team this year under Coach "Speed" Speegle. The final tally: Seven wins and three defeats.

Sophomore freestyler Jim Pitts accumulated 114 points for the season, taking first place honors 18 times. Other top performers were George Austermann, senior captain, in the distance events, Bob Koch, in the sprints, and Dave Barge in the breast-stroke. Off the springboard, Don Spitz, a junior, and Ben Skalney, a senior, were reliable point-getters. A lion's share of the credits go to the UR relay team—Phil Reed, Warren Dillenbeck, Koch, and Pitts—which saved the day for Rochester on several occasions with down-to-the-wire finishes that had Rochester rooters on tenterhooks—not to mention Coach Speegle.

The relay team set a new UR pool record with a time of 3:48.6, two tenths of a second under the 1946 mark, in a second meet with Union, which Rochester won by the narrow squeak of 39-36. In the first Union engagement, Rochester won 41-34. Other victories were over Hamilton (twice), the University of Buffalo, and Niagara (twice). The Rivermen lost a heart-breaker to Oberlin, 37-38, and also came out on the short end against Colgate and RPI.

Alumnae Association To Greet Seniors At Memorial Art Gallery Reception

The Alumnae Association will play hostess to members of the graduating class of the College for Women at the traditional reception for senior women to be held in the Memorial Art Gallery on Tuesday evening, April 25. Betty McFadden Schulte, '49, chairman, has announced that an entertainment will be given by members of last year's graduating class to welcome the Class of 1950 into the Alumnae Association.

After the entertainment, alumnae and seniors will meet at a reception in the Fountain Court of the gallery. The officers of the Alumnae Association will form the receiving line.

Members of the Class of 1949 chosen to serve on the reception committee include Gertrude Ferguson Dunbar, program; Irmabeth Good, hostesses; Lynette Relyea, decorations, and Phyllis Kroemer, invitations.

DIRECT MAIL ADVERTISING
EFFECTIVELY PLANNED & PRODUCED

• CATALOGS



• BROCHURES

• PUBLICATIONS

LETTERPRESS • OFFSET

BAKER-BRITT CORPORATION

49 SOUTH AVENUE • ROCHESTER 4, N. Y.

Phone BAKER 4457

YOUR CLASSMATES

College for Men

1911

The Rev. Hugh W. Stewart has completed "ten good years as pastor of Chatham Baptist Church, Chatham, Ont." On February 1, he moved to Dunnville, Ont., to become pastor of the First Baptist Church there. He would like very much to have "some old Rochester friends" stop at Dunnville.

1919

Elmer B. Milliman, president of the Central Trust Company in Rochester was presenting awards to his employees at a dinner before Christmas when the tables were turned. The employees presented him with a diamond pin, with the citation, "Just for being a good guy".

1926

Alfred Thorpe Loeffler has been awarded a leave of absence from the Monsanto Chemical Co., in St. Louis, Missouri, to attend the Advanced Management Program at Harvard University Graduate School of Business Administration. Al has been general manager of Monsanto's New York branch office since January, 1939.

1929

Max Astrachan and his wife have written us of the birth of their first daughter, Judith Lee, last October 9. They have two sons, Gerald, age 12, and David, age 9. The Astrachan's are living at 204 E. Whiteman St., Yellow Springs, Ohio.

1930

William Lake has been named manager of the repair department of the Eastman Kodak Co. He has been employed by Kodak since his graduation from the University.

1931

The Herbert A. Lauterbach's have reported to us the birth of their second child, a daughter, Ellyn Ruth, born last September 3. Ellyn has an older brother, Peter.

1932

Dr. Ralph A. Arnold wrote recently that he is located at the School of Medicine, Department of Surgery, Duke University, Durham, N. C.

Mr. and Mrs. Knight Thornton have announced the birth of a daughter, Susan Rogers, on December 29, 1949.

1933

Ward R. Whipple, Rochester attorney, has

been appointed special examiner of Surrogate's Court. His assignment is to examine accounts filed by guardians in that court. Ward is chairman of the Naturalization Committee and a member of the Citizens' Information Committee of the Rochester Chamber of Commerce.

Robert Metzdorf, spending this year at Harvard University, has written an interesting letter concerning many UR alumni who visited him recently. "Adams Y-12 has become a house of call (if you'll pardon the expression) for Rochesterians visiting Harvard. It all started a week ago Friday when Ed Atwater popped in on me, after his interview at the Medical School. That evening, Don Marston called me to say he was in town, and was meeting Charley Adler at the station. They came out, and we bedded down both of them. Don left the next day, but Charley stayed until Tuesday, and was thoroughly indoctrinated in Harvardiana; he also saw the people he wanted to meet, and will probably be here next year.

"Phil Price arrived Monday, and he and Charley and I had dinner together that evening at the Faculty Club. Phil saw Houghton Library on Tuesday. On Friday Marston returned for his grad school interviews, and that evening he and Bud Cohen and I reminisced, after they had been to dinner with Betty and Al Levin. On Saturday Mary and Gordon Kester stopped by, and we had a fine visit. Gordie is on the *Providence Journal* and his wife is with the Brown publicity office.

"So when Marston left this morning I felt I had been your (i.e. Pete Prozeller) understudy for the last ten days. Score: six alumni and undergraduates, and gossip about a score of others nearby."

1934

Charles M. Reed has written that he gets together with Ben Simmons, Art Gale and Bill Grossman occasionally and "talk over days when we were in Rochester." Since his discharge from the Army in 1945, Charlie Reed has been working for American Republics Corp., an oil company, as a production geologist. In July '47, he married Ola Mae Boyd of Palestine, Tex., and in May, 1949, Charles M. Jr. was born.

John J. Reed is now in the Department of Social Science of Muhlenberg College, Allentown, Pa.

Mr. and Mrs. Louis J. Teall announced the birth of a daughter, Elizabeth Marie Teall, on January 12.

1935

Neil J. Hickey has recently been appointed Supervisor of Vocational Rehabilitation in the Rochester office of the New York State Education Department.

1936

Jack Corris has written to say that the "Corris menage is back in the East . . . After the war I was in Seattle for three and a half years as director of Vocational Rehabilitation and Education, for the V.A., for the four Northwest states and Alaska. In June, 1949, I was transferred back to Central Office in Washington, D. C. as special assistant for operations, Training Facilities Service, V.A. We make the contracts with all educational institutions for payments under the G.I. Bill and find the proper facilities for the rehabilitation of the disabled veterans, etc. The work is extremely interesting, and we are all very happy to be back in God's country, Horace Greeley, not withstanding.

"Ann (Snyder '37) and I have two boys, John, Jr., 7, and Stephen, 5, and have a very busy life. Both of us are taking graduate work and that, with the boys, accounts for our time.

"Please remember me to any of our old friends still there . . . Ann and I very much enjoy the *Review*."

The Corris family is living at 6610 Glen Carlyn Drive E., Falls Church, Va.

The Pfaudler Company has announced the promotion of Donald A. Gaudion to assistant to the president, in charge of sales and advertising. He has also been elected a director of the General American-Pfaudler Corporation. Don was formerly vice-president and director of the Kryptar Corp. of Rochester.

Edward Yewer last year was elected vice-president and member of the board of directors of the Ho Western Leather Co. in Milwaukee, Wis. The Yewers became the parents of a son, Edward Henry Jr., in December, 1948. They are residing in Hartland, Wis.

1937

Milton H. Joffe, his wife and two children, Richard, 5, and Carol Sue, 2, have moved to 636 Chestnut Ave., Richland, Wash. Milt writes that he is now doing animal physiology on the Hanford Works Project for the General Electric Company. He received his Ph.D. in physiology from Ohio State last June.

Dr. Edward M. Parkin has established a practice in pediatrics at the Grand View Clinic, La Crosse, Wis.

Sam Spagnola is now with the law department of the Prudential Insurance Co. of America in Los Angeles, Calif.

Jim Phillips took advantage of 90 days accumulated vacation and sailed at the end of September for Europe where he visited Germany, Belgium, Holland, England, France, Switzerland and Italy, arriving home aboard the *Ile de France* just in time

for Christmas. Jim has been in Washington for the past eight and a half years as a statistician in the Office of the Quartermaster General.

In the *Warren Phillips* household there are now three assistant editors of the *Review* in charge of tearing up proofs, mutilating photographs and decorating the wall paper with rubber cement. Linda Louise, born January 23, is being groomed for her responsibilities by Marlene, 8, and Tommy, 3.

1938

William F. Dolke has been appointed head of the Rochester district sales office of the vacuum equipment department of Eastman Kodak Company's Distillation Products Division.

Robert Kaley, residing in Kenmore, N. Y. is in his first year of dental school.

Mr. and Mrs. Harold Kentner of 213 Forgham Rd., Rochester announced the birth of a third daughter, Marianne Ruth, on January 3.

Vincent D. Trinker and *John M. Wilson* announced the opening of law offices on February 1, under the firm name of Wilson, Trinker and Gilbert, 1001-1004 Wilder Building, Rochester.

1939

Mr. and Mrs. Kenneth J. Hoesterey announced the birth of a son, Ronald Bruce, on January 19. Ronnie has an older brother Richard, 7.

Leo Summermatter and Miss Helen Baybutt, '39, were married on January 21. The Summermatters are living in Rochester.

1940

Mr. and Mrs. Richard Drake announced the birth of a daughter, Barbara Jean, born January 11.

Maj. Robert T. Hall has been transferred to Tyndall Air Force Base in Florida from Maxwell Air Force Base in Alabama, where he was a student at the Air Command and Staff School. He had served 35 months overseas in the Headquarters Command, U.S. Armed Forces, Europe, at Wiesbaden, Germany. The Halls have a son, Robert T. Hall III, age 4.

David Kelsey and his wife have moved from Chicago to Takoma Park, Md. near Washington. Dave is with the Agricultural Research Center of the U.S. Department of Agriculture, at Beltsville, Md., as an insecticide chemist.

1941

Mr. and Mrs. W. Robert Mann recently announced the birth of a son, Charles Mahlon, born December 12.

Bernard W. Fleckenstein's engagement

to Miss Marion L. Collins of Richfield Springs was announced recently.

Ruth Meyer McCleary, '42, and *Tom McCleary* have a new daughter, Kathie Ruth, born January 10.

Richard M. Bidwell received his Ph.D. in chemistry at Western Reserve University in February.

1942

Dr. Floyd E. Bliven Jr. and Miss Hester DuPuy Spencer have announced their engagement. They plan to be married this summer.

Charles Ransom is now with the history department of the University of Pennsylvania.

1944

"*Skeep*" *Langhans* writes that "Hawaii of course, is a lovely place, and the University is a fine one. My work in the theatre here keeps me on the move constantly, but I enjoy that sort of thing so much that it doesn't really seem like work. Very creative and exciting. Our first three productions (*The Male Animal*, *Street Scene* and *Six Characters in Search of an Author*) have been highly successful."

William Nolan, along with several other UR alumni, is with the history department of the University of Pennsylvania.

1945

Dr. David T. Fitzelle and Miss Nancy Bell Bickford were married in December, in Rochester. They are living in Oceanside, Calif. Dave is stationed at the Naval Hospital at Camp Pendleton.

Harry J. Pinsky and Miss Penny Vogel have announced their engagement and plan to be married in June. Harry is in his third year at the UR Medical School.

Peter Togailas and his wife, Helen Shakeshaft Togailas, '41, left New York by plane on January 10 for Bergen, Norway where they will stay about four months. From there they go to Stockholm, Sweden. Pete is being sent by Distillation Products to install new stills to be used in the processing of fish oils.

A recent interesting letter to the Alumni Office from Helen's mother said in part:

"They are being received with open arms by the Norwegians who all so far speak fine English. They received many gifts on arrival including bouquets of tulips from the Martens Co. at Bergen as well as one from an exchange student who attended the UR for a year, Einar Leversen. Small world after all.

"They are having a glimpse of daylight now, but lights are still on all day. Working hours 7:30 to 4:30 without lunch, then they have midday lunch and dinner from 7 to 9.

"When they want a bath they notify the office and it takes 20 minutes to heat the water and then when you are ready, the tub is all filled for you by the maid.

"Their breakfasts the first couple days were pickled herring, sardines, cheeses, sliced hard-boiled eggs, brown bread, milk and coffee. The last letter they were having ham, soft boiled eggs, strawberry jam, brown bread, and coffee. The weather is mild, no wind or snow, but last year they had between 9 and 10 feet of rain.

"They are having a wonderful experience."

Hendrick Charles Van Ness, now a graduate student at Yale, and Miss Virginia Lee Crider of Rochester announced their engagement in December.

1946

The Alumni Office recently heard from *Dr. Seymour Friedman*. He is now located at the Royal Victoria Hospital, Montreal.

Dr. Domenic Gabriel Iezzone and Miss Ruth Effie Lambert of Cleveland were married in Rochester in January. *Jack Conolly*, '48, was best man.

Robert and Ann Stroman have announced the birth of a son, Alan G. Stroman, born last September 29.

1947

Philip C. Fisher is doing graduate work at the University of Illinois. He is living at 408 W. Church Street, Champaign, Ill.

Vincent Fantauzzo and *Marjorie Bartold Fantauzzo* have a son, Peter William, born January 20.

Eugene A. Kurtz is in Paris where he is studying music composition at the Ecole Normale with Arthur Honegger, the eminent French composer.

1948

John W. Guyon and Miss Norma Elizabeth Schaller, also a UR graduate, were married in Rochester on December 10. They are living in Shaker Heights, Ohio.

The Rev. Theodore Krause recently moved to 205 W. Church Street, Evansville, Wis.

Leonard A. Liberman, now doing graduate work at the University, and Miss Eleanor Gleiner announced their engagement in January.

Harold P. Van Cott writes that "despite the obvious advantages of the South I really miss the U. of R. Graduate school is a tough grind, but I have gotten an instructorship and am doing some pretty interesting work on group dynamics which eases the academic dryness of much of the rest of my work. I hope to get my Ph.D. in psychology next year and then settle down in some 'ivy-covered' college (or tower)

Get Your 'T' Shirts for Tomorrow's Alumni—Send in Birth Notices Today

and do research and teach."

Pete Woodams, attending graduate school at Cornell, and Miss Marianne E. Braun of Rochester, plan to be married in June.

1949

David C. Harvey and his wife, now in Pasadena, Tex. have announced the birth of another son, Kenneth Scott, born last September 10.

Donald P. Beattie and Miss Joan Hofferbert of Rochester were married in February in Rochester.

R. Bruce Thompson Jr. and Miss Barbara Ann White were married in Rochester just after Christmas. Bruce is doing graduate work at Johns Hopkins University.

Donald Terry and Miss Elizabeth Stoll of Rochester were married January 5 in Rochester. The Terrys are now living in Niagara Falls where Don is a field scout executive with the Boy Scouts of America.

Among the many engagement and wedding announcements from '49ers are the following:

John B. Allington Jr. and Miss Mary Kathryn Healy, a Nazareth College graduate—engaged at Christmastime.

Vance J. Carpenter and Miss Geraldine Anne Casey of Rochester—to be married soon.

Michael Fedoryshyn and Miss Beverly Jean Rose, '50—engaged.

Jackson L. Fleckenstein and Miss Ann Dertinger, a graduate of Cazenovia Junior College—to be married.

Robert J. Hampton and Miss Marjorie Vaeth, graduate of Nazareth College—engaged.

Ronald A. Miller and Miss Clarice M. Carter—engaged.

John Neel and Miss Rosemary C. Walsh became engaged at the same time John's sister, Virginia Ann Neel, '50, and Richard Henry Skuse announced their engagement.

Harold S. Norris Jr. and Miss Patricia Costello to be married in June.

Thomas C. O'Brien and Miss Jean Barbara Vogt of Webster—to be married soon.

Robert Van Graafeiland and Miss Jean Holmes to be married in May.

Graduate School

Gordon Shillinglaw, who received his master's degree in '49, and Miss Barbara Cross, a teacher at Berkeley Institute, have announced their engagement. Gordon is a graduate student and teaching fellow in economics at Harvard University.

MEDICAL SCHOOL

M '39

Dr. and Mrs. Lawrence E. Young have a new member in their family, Anderson Briggs, born December 2. They have three other children, Beverly, Carolyn, and Marjorie.

M '41

Dr. Edward M. Parkin has established a practice in pediatrics at the Grand View Clinic, La Crosse, Wis.

M '47

Dr. James Allen Bush and Miss Sara Low Johnson of Concord, N. C. were married in Pelham Manor, N. Y., on January 6. Dr. Bush is an assistant resident at the Babies' Hospital in New York.

YOUR CLASSMATES Alumnae

1905

Florence Levis Fisher is spending the winter in Sarasota, Fla.

Alvalyn Woodward stopped briefly in Rochester in December on her way from Ann Arbor to New York to attend the meetings of the National Association for the Advancement of Science.

Our sympathy goes to *Gertrude Salisbury Craigie* on the recent death of her husband, Chester F. Craigie.

1906

Lilian Crafts is spending the winter with her sister Mabel Crafts in Jacksonville, Fla.

Blanche King Egner, who is living in Ridgewood, N. J., has been elected to the board of directors of the New York Chapter of the Alumnae Association.

W. BERT WOODAMS

Anthracite Bituminous
COKE FUEL OIL
THERMOSTATS

785 South Avenue
Monroe 4300



Everybody
Swing!

Swing to Beech-Nut...
Beech-Nut Gum!

Swing on down
and getcha some!

Swing to the taste
that lasts so long!

Swing to Beech-Nut...
come along!

Y' can't beat Beech-Nut Gum
for quality 'n' refreshment!
Swing to Beech-Nut...
Beech-Nut Gum!



1910

The class met at the Rochester AAUW Club House on December 29. Those attending were *Edith Jackson*, recently retired after a strenuous teaching career, *Alice Challice Robinson*, *Elizabeth Farber Barry*, *Frances Angevine Keef*, *Marion Taylor Bohacket*, *Hazel Bascom Aprile*, *Beatrice Tripp*, and *Katharine Bowen Gale*. The class hopes that many of the members will be in Rochester for Commencement week-end, June 10-12. Members wishing rooms for the weekend are asked to write to the secretary, *Katharine Bowen Gale*, 93 Bellevue Dr. Rochester.

1911

The class sends its sympathy to *Marian Maguire Sullivan*, whose husband, Leo J. Sullivan, died February 7.

1912

Thirteen members of the class met for luncheon at the home of *Marguerite Castle* December 31.

Florence Carman was in Rochester at Christmas for the first time in several years. She attended a Carman family reunion.

Lurana Round Wilson and her sister spent five weeks in Florida early this winter.

Cora Martin Winter now lives in Canora, Iowa. Her husband has retired and their three children are married.

Ruth Salter Ricard's daughter is married and living in Dallas, Tex.

1913

The daughters of three class members were married this fall and winter. *Alice Booth Holmes's* daughter, *Alice*, '48, was married to John Phillips, *Avadna Loomis Seward's* daughter, *Avadna*, became the bride of Eugene Cogwill, and *Louis Haines Rigg's* daughter, *Janet*, '50, was married to John Langdon.

Edna Bayer has been on leave this winter from the library of Benjamin Franklin High School in Rochester and is taking a South American cruise.

Irene Larzelere Schouton is spending the winter in St. Petersburg, Fla.

1914

Mildred Murenberg's engagement to Richard M. Freer of Rochester was announced on Thanksgiving Day.

1915

Josephine De le Lys Bassett will fly to Germany in April to visit her brother who is stationed in Rosenheim, just south of

1923

Marguerite Schleber Bushman is living on a farm near Honeoye Falls.

Helen McKenzie is now in Germany, with a formidable-looking series of letters and numbers after her name for an address. Class Secretary *Elizabeth Kennedy Benedict*, 171 Rutgers Street, Rochester, will be glad to pass on the address to any one Munich. She also plans to visit Switzerland, northern Italy, Holland and make a stop-over in London before she returns home.

Jean Goldstein Cohen is moving back to the East from Henderson, Nevada, to live near New York City.

interested.

1925

Bee Brugler was named president of the board of directors of the Rochester Traveler's Aid Society in December.

Marjorie Bickford's new address is 620 South Coronado St., Los Angeles 5, Calif. She is teaching at the David Seabury School of Centralist Psychology in Los Angeles and studying clinical psychology with Dr. Seabury.

Grace Murray, in company with *Catherine Sheehan*, '27, had a pleasant and busy vacation trip to New York City, where she listened in on the A.A.A.S. meetings and attended plays.

Mildred Burton recently helped train a group from the Rochester Oratorio Society in French diction.

1927

Caro FitzSimons Spencer is a training supervisor in the personnel department of Sibley, Lindsay and Curr Company in Rochester. Caro's field is fashions.

Helen Blackburne Power was recently elected chairman of Rochester A.A.U.W.

Clara Hamel has received her master's degree from the UR.

1928

Elizabeth Remington Turpin recently moved to Richmond, Va. She is living at 3504 Maplewood Ave.

Mary Ashcroft McNall is teaching English at Jefferson High School in Rochester after several years' leave of absence.

Marie Mooney Green's son, Thomas, has entered St. Andrew-on-Hudson, a Jesuit seminary.

1929

Margot Schuetze is doing special study in the field of human relations in industry for a year at Cornell's School of Industrial and Labor Relations.

1930

Dorothea Scheible Bootey was married on February 4 to Kenneth P. McConnell. The McConnells will be living in Texas, where Dorothea's husband will join the faculty of the University of Texas.

1933

Margaret Goold Brownlee was married on December 8 to LaVern C. Frey. Margaret writes that the Freys are enjoying their new home in North Tonawanda and that she enjoys being a housewife again.

Virginia Pierson Thornton has a daughter, Susan Rogers, born December 29.

1934

On January 15 *Dorothy Rousos* became Mrs. Dennis J. Livadas. Dennis is a graduate of Hamilton College and Columbia University Law School.

1935

Cora Hochstein was married to Nicholas Feld on December 27 at the home of the American consul general at Nairobi, Kenya, East Africa. Cora's husband has served with the U. S. State Department for ten years and is American consul at Dar-es-Salaam, East Africa.

1937

Helen Quigley Kalwas's son, William John, was a year old on January 15.

Katherine Nowak Kentner has a daughter, Marianne Ruth, born January 3.

1938

Mary Dick is studying art and Italian literature at the University of Rome. Mary says that she is learning her Italian fast because they speak no other language at the University.

Joann Guggenheimer Schreiner's father died recently. The class sends its sympathy.

1939

Wilma Cooney is teaching at Britton School at Greece, N. Y.

Anne Weaver has returned from a cruise on the SS. Queen of Bermuda. She visited Nassau and Bermuda. Anne is a librarian at the business library of Eastman Kodak.

Jean Simmons Brooke is now living at 411 Marshall Dell Ave., Dallas 11, Tex.

Dorothy Long left February 15 for Texas, where she is secretary to the manager of the new Texas branch of Eastman Kodak Company.

The Bob Jacksons (*Pat Palmer*) are living at 878 Ridgeway Ave., Rochester. Pat has two sons, Peter and Tommy.

Johnny Hammond announces the arrival of a baby brother, Hiram Mark, born July 22. Mark and Johnny are sons of *Anne Schumacher Hammond*.

Betty Worner Brown and her husband are moving to Westchester where Ev will be a sales representative for Distillation Products with metropolitan New York and New England as his territory. The Browns' new address is Orienta Point Apartments, Apt. 3-G, Mamaroneck, N. Y.

1940

Born January 19 was Hilaire Rowland Sargeant, daughter of *Jeanne Brennan Sargeant* in Fairfield, Conn.

Verna Volz writes a most interesting letter from Liberia, West Africa, where she is a "foreign secretary" with the YWCA. Verna writes that the country is full of strange contrasts. She says, "I find it difficult to believe a familiar Coca Cola sign in the midst of a native village; or a small child in a native village dressed in the suit nature gave him, surrounded by mud and thatched huts and primitive implements like his people have used for endless ages, but playing with an inflated rubber animal or a bright plastic fire truck!" The YWCA center, where Verna lives, is across the street from the executive mansion in Monrovia. Her address is Box 118, Monrovia, Liberia, West Africa.

Richard, '39, and *Jean Hall Drake*, have a daughter, Barbara Jean, born January 11 in Schenectady.

1941

Jane Sibley Auchincloss is the mother of three children, Stuart, Gordon, and Sibley Anne, yet finds time to work in a book and toy shop and to serve on the board of the Planned Parenthood Association, the Republican Club and on the book committee of the library in Norwalk, Conn.

Marge Van Ryne Fisher and Don have a new daughter, Susan Jane, born January 7.

Emma Mueller Spielman's daughter was born December 20.

Florence Blake Bauer and her husband are living in New York City where Florence is secretary to the president of the Emery Air Freight Corporation.

Sue Sanney Goode, Don, and their daughter, Sharon, 2, have a new home in Yellow Springs, Ohio. Sue is teaching at the Antioch Nursery School.

Marion Lee is now Mrs. Raymond D. Curran and is living in New York.

June Congdon O'Neill and her husband have two children, Roberta, 4 and Karen, 2. June is placement chairman in the Junior League of Bethlehem, Pa.

In addition to caring for Susan, 6, and Peter, 4, *Susan Wolters Van Arsdale* still finds time for her dancing. She teaches dancing, performs publicly, and participates in the local dramatics groups in Orangeburg, N. Y.

1942

The marriage of *Harriet Davis* to Dr. John Gordon Hamilton took place February 25. Harriet's husband is on the resident staff of Strong Memorial Hospital.

Ruth Meyer McCleary's daughter, Kathie Ruth, was born January 10.

James Arthur Brush, third child and second son of Alfred, '41, and *Toni Wiener Brush*, was born January 25 in Washington, D. C. The Brushes are living in Rockville, Md. while Al is working for the U.S. Geological Survey in Washington.

Jean Adkins Leferts has a son, James Lindner, born January 29.

June Baetzel is working for the "Y" in Mexico. Her address is Calle Articulo 123, 110, Mexico, D.S.

1943

Cynthia Gair, daughter of the Jack Gairs (*Peggy Lou Davis*), was born June 17, three days after Jack, '44, received his Ph.D. in geology from John Hopkins University. The Gairs are now living in Eugene, Ore., where Jack is an assistant professor in the Department of Geology and Geography at the University of Oregon. Their address is 1545 Agate St., Eugene, Ore.

Martha Nichols Rakita became the mother of a son, David, last August 11.

Diane Elizabeth, who was born in August, is the new daughter of *Betty Christ Stevens*.

Dorothy Levy Callant has a new daughter,

Patricia, born in November.

On December 16, Pamela Sue was born to Roy and *Ruth Wunder Philipp* in Iowa City, Iowa.

Sue Griswold Cotton and her husband Dick are living in Ithaca.

The class's deep sympathy goes to *Elaine Gleichauf Plummer* on the unexpected death of her husband, Norman, on November 24 in Minneapolis.

Jane Lacey Foulds is doing advertising work in New Orleans.

Jane Schmidt left for Cuba in the middle of February for a vacation.

Hannah Esterman Davies has a daughter, Lynn Marie, born January 25.

1944

Anita Manning became the bride of Frederick G. Little on November 26. Two of the bridesmaids were *Betty Dale* and *Katherine Carroll Shady*.

Winifred Christ was married December 8 to William Hines.

Christine Alison Chapman was born December 6 in Ann Arbor, Mich. to Carlos and *Helen McCord Chapman*.

On December 8, Tuck and *Marj Cook Faulkner* became the parents of Vicki Ann Faulkner.

Barbara Exter Hartz also has a new daughter.



BACK LOG CAMP

Sabael, N. Y.

ON INDIAN LAKE IN THE ADIRONDACKS

A summer camp for adults and families in the heart of a woodland wilderness. For the active there are guided trips by trail and boat, including longer expeditions to Mt. Marcy, or canoeing on the Raquette River. For the leisurely, rest and quiet amid congenial company.

For illustrated folder, address:

MRS. WALTER D. LAMBERT, Box 687, Canaan, Conn.

Peggy Peppercorn Hunt finds time to do editorial criticism for several New York professors, as well as taking care of her two small daughters.

1945

Betty Rowe's engagement to Clarence Noyer of Roseburg, Ore., has been announced. The wedding is planned for July.

1946

Announcement has been made of the engagement of *Dot Quigley* to Sam Ferrell of Amarillo, Tex. Dot is still with the Visiting Nurses' Association in Rochester.

Margaret Johnston was married February 4 to Walter Carlson in Manchester, N. H.

Peg Caves Johnston has a daughter, Jilaine Jo, born January 30. Peg's husband, Bill, was graduated from Syracuse University in August.

The class extends its sympathy to *Catherine Johnson Scutiere* on the death of her father in January.

Laurie Chapin has been working at the American Hospital in Paris for a year.

Ellen Summerhays Beach now has a son, Stephen Charles. Ellen and her family are living in Ann Arbor, Mich.

Cathy Mirabito has returned from the Ozarks where she served her internship with the Frontier Nursing Service.

Dot Taylor and *Lois Hitchcock* are head nurses at Strong Memorial. Dot is in pediatrics and Lois is in the medical ward.

Jane Barhite has submitted her thesis for her master's degree in social work at Columbia University and is working at the Monroe County Welfare Office in Rochester.

Shirley Parmington Madison's husband, Mitch, is out of the Navy and is now at the Mayo Clinic in Rochester, Minn.

Beverly Field is assistant buyer in cosmetics at G. Fox in Hartford.

Anne Meacham can be seen occasionally on TV as well as on the Broadway stage.

1947

Nancy Farnum's engagement to Dr. Joseph C. O'Dea of Avon was announced in December. The wedding is being planned for June.

Terry Levering was married February 18 to Capt. Robert MacMullin, USAAF.

Rosemarie Fay, after staying at home for a few months following her return from China, is now in France. Her address is Hdqs., U.S.S.A., U.S.A.C.A., A.P.O. 777, U.S. Army, c/o Postmaster, New York, New York.

Sue Naruse writes that she is working as night nurse at Good Samaritan hospital in Los Angeles and attending USC during the day, studying physics and organic chemistry.

Joan Ernst, Carolyn Whitney and *Pat Spencer* have finished their nursing course and are working at Strong Memorial Hospital.

1948

Announcement has been made of the engagement of *Alice Barnes* to John Evans.

Eleanore Neubert was married December 26 to Joseph Woodstock. Eleanore's husband is working for the Otis-McAllister Exporting Company in New York.

On December 23, *Pat Perry* was married to Steven A. Mauro, a member of the faculty of the Central School of Hampton Bays, L. I. Pat has been teaching at the Southampton Grade School, L. I.

Zippy Parry is studying medical social work at St. Louis University.

M. E. Stewart is doing graduate work in the education department of the University of Indiana.

Beth Bishop is back in Rochester, doing graduate work in English at the UR.

Dorothy Duncan was married to Roger Appleby in June at Grosse Point, Mich.

Ditty Faulkner is working in the office of the director of admissions at the River Campus.

1949

Recently engaged is *Shirley Stevens*. Her fiance is Edward Miller of Rochester.

On December 28, *Helen Converse* became Mrs. Robert A. Lewis. Bridesmaids were *Trudy Ferguson Dunbar, Mary Lou Keck,* and *Barry White*. The Lewises are living in Pensacola, Fla.

Annette Wilson is working for her master's degree at the University of Illinois.

Jane Mosbrugger is working for the Atomic Energy Commission in Rochester.

Iva Allen is working in the research laboratory at Kodak.

Nicky Nixon, home for Christmas, gave glowing reports about her teaching job in the Central Methodist School in Havana, Cuba.

Carolyn Neel Yaude and her husband, Walter are living in Corning, N. Y.

Chicky Frank and *Shirley Zelden* are now enrolled in a three month course at the New York School of Social Work.

Katie Johnson has returned from Boston to Rochester and is now a secretary at the S.P.C.C.

Judge William C. Kohlmetz, '95, member of Delta Upsilon, died February 9 in Rochester. After engaging in private law practice and serving as member of the Rochester Board of Education and Common Council, he was elected police justice in 1917. He later became judge of City Court and in 1928, was elected Monroe County Court judge, a position to which he was repeatedly reelected until his retirement recently.

Louis C. Lovegrove, '23, A.M., '24, died December 19 in Rochester.

Lee J. Rowley, '98, member of Psi Upsilon, died January 5. He was 74 years old. He had served for 44 years in the Rochester city treasurer's office, most of that time as cashier. Surviving are his wife, Jessie Woodruff Rowley; a son, Reed, and a daughter, Mrs. William P. Rupert.

Ezra M. Sparlin, '85, member of Delta Upsilon, died December 29 in Rochester. He was 89 years old. Insurance man, educator, and prominent Mason, he had long been active in alumni affairs and had recently served as fund agent in the annual fund campaigns.

After taking his A.M. from the UR in 1888, he received his Ph.D. from Wooster in 1903 and entered the teaching profession. He was principal of schools in Rochester and Lancaster, Pa. for 24 years, then entered the life insurance business in which he continued until retirement a year ago.

Samuel H. Weinstein, '18, member of Kappa Nu, was killed in an auto crash December 19. In advertising work since his graduation, he had been associated with the North East Electric Co. and the Consolidated Machine Tool Corp. until 1943 when he joined Charles L. Rumrill & Co. He was vice-president of the agency at the time of his death.

IN MEMORIAM

Dr. A. L. Benedict, '87, member of Delta Upsilon, died January 10 while on a professional call in Buffalo where he had been a physician for 55 years. He was 84 years old and had been in failing health for a year and a half.



*“Nothing is stronger than
public opinion. Given the
facts, nothing is wiser.”*

On Competition

Hatch a good idea and you hatch competitors.

It works this way—to take General Electric as an example:

In 1934, the automatic blanket was initially developed by General Electric. Today there are twelve other companies making electric blankets in competition with G. E.

In 1935, General Electric first demonstrated fluorescent lamps to a group of Navy officers. In 1938, the first fluorescent lamps were offered for sale. Today they are being manufactured by a number of companies.

The first turbine-electric drive for ships was proposed and designed by G-E engineers. Today four companies in this country build this type of ship-propulsion equipment.

After several years of laboratory development, General Electric began production and sale of the Disposall kitchen-waste unit in 1935. Today fourteen other companies are in this field.

The first practical x-ray tube, developed at General Electric years ago, is now a highly competitive business for seven manufacturers.

In 1926, a practical household refrigerator with a hermetically sealed unit was put on the market by General Electric. Today 34 companies are manufacturing household refrigerators with hermetically sealed mechanisms.

* * *

Research and engineering snowplow the way, not only for new public conveniences, but also for new companies, new jobs.

There are 20% more businesses today than there were immediately after the war.

Industry furnishes over 10,000,000 more jobs than ten years ago.

The average family owns more and better products of industry than ten years ago.

Any American company that plows back money into research and engineering development makes new business not only for itself, but for others.

The economy that does most to foster competition is the one that makes easiest the establishment and growth of business.

You can put your confidence in—

GENERAL  ELECTRIC

"If you want a Milder
cigarette that Satisfies
it's Chesterfield"

Gregory Peck

Starring in Darryl F. Zanuck's Production
"TWELVE O'CLOCK HIGH"
A 20th Century-Fox Picture



... and JASPER T. CARTER,
PROMINENT TOBACCO FARMER says -

"Chesterfield pays the top price to get
the very best mild, ripe tobacco.
Chesterfield has been my cigarette
for over 35 years."

Jasper T. Carter

BLANCH, N. C.



A *Always* **B** *Buy* **C** **CHESTERFIELD**

the Best cigarette for YOU to smoke