



**Subic Bay
International
Terminal Corporation.**

SBITC NAVIS 3.7:CONTAINER PRE-ADVISE CREATION

Subic Bay International Terminal Corporation: Container Pre-advise System



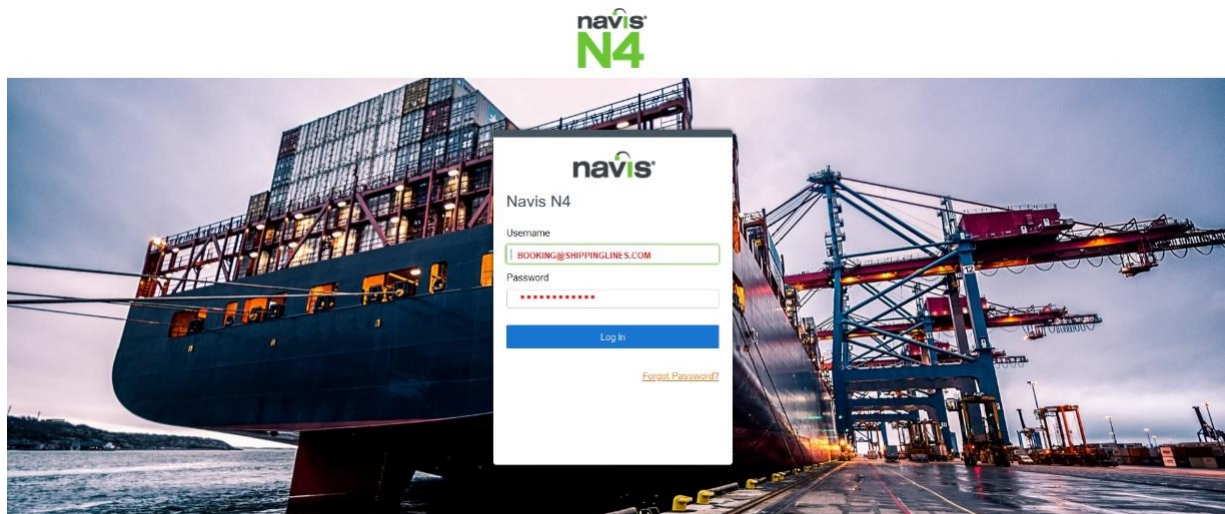
SBITC: PRE-ADVISE REQUIREMENTS

STEP 1: Access the SHIPPING LINE account using the link below.

- INTERNET EXPLORER
- MOZILLA FIREFOX
- GOOGLE CHROME
- SAFARI
- OPERA BROWSER

LINK: <http://webapp.n4aws.ictsi.net/apex/n4.zul>

STEP 2: Log-in using the provided account.



Copyright (c) 2020. Navis N4 3.7.3.10.328055

Welcome to SBITC Navis Sparcs V.3.7: PRE-ADVISE CREATION FOR EXPORT CONTAINERS



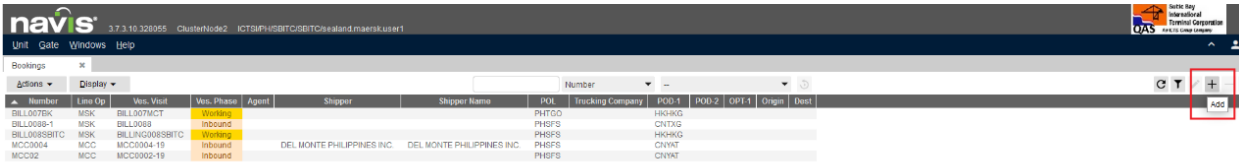
Copyright (c) 2020. Navis N4 3.7.3.10.328055

SBITC EXPORT BOOKING CREATION:

- Add EXPORT BOOKINGS
- Go to GATE > Dropdown “BOOKING”



- Click “+” ADD



Number	Line Op	Ves. Visit	Ves. Phase	Agent	Shipper	Shipper Name	POL	Trucking Company	POD-1	POD-2	ORP-1	Origin	Dest
BILL007BK	MSK	BILL007MCT	Working				PHTGD		HKGKGG				
BILL008B-1	MSK	BILL008B	Inbound				PHSFS		CNTXG				
BILL009SBTIC	MSK	BILL009SBTIC	Working				PHSFS		HKGKGG				
MCC0004	MCC	MCC0004-19	Inbound		DEL MONTE PHILIPPINES INC.	DEL MONTE PHILIPPINES INC.	PHSFS		CNVAT				
MCC002	MCC	MCC0002-19	Inbound				PHSFS		CNVAT				

STEP 1: Input EXPORT BOOKING details.

- Booking Number Confirmation – same as the EDO Booking Number
- Vessel Visit – intended vessel registry
- POD – container export transshipment port
- Line Operator
 - *** *Co-loaders will have **access** in the **booking creation under the vessel registry** if the required signed “CO-LOADING AGREEMENT” is submitted ****
- Freight Kind
- POL – Port of Loading of container
- Category – should be “EXPORT” for export container pre-advise
- SHIPPER – shipper name can be inputted under the export booking
- Origin – Cargo origin location (Please refer to attached UNLOCODE)

Add Booking

1 *Number: SAMPLE EDO

2 *Vessel Visit: MCC0001-19 (ALS JUPITER,MCC02,SB...)

3 *Port of Discharge: CNYTN (YANTIAN)

Optional POD-1: --

7 Shipper: AGX EXPRESS PHILIPPINES INC

Origin: --

Agent: --

Dispatch Reserved: --

Owned/Leased: --

Override Cutoff

Special Stow: --

Special Stow 3: --

Stow block: --

Hazards: Add Hazard

Stuffing Location: --

Latest Date: --

Notes: --

4 *Line Operator: MCC (MCC TRANSPORT PHILS.)

5 *Port of Load: PHSFS (SUBIC)

Second Port of Discharge: --

Trucking Company: --

Consignee: --

Destination: --

Client Ref.Number: --

6 *Freight Kind: FCL

Shipping Mode: --

Dray Status: --

Special Stow 2: --

Hold Partials

Prevent Type Substitution

Empty Pickup Location: --

Full Return Location: --

8 *Category: Export

Override cutoffs for rail containers

Booking Items

Qty	Tally Out	Tally In	Seq Nbr	ISO	Length	ISO group	Height	Is OOG	Commodity
No Data to display.									

0:0

Save X Cancel Help

Click "SAVE" to update the Booking. Saved Transactions can be Viewed on Export Booking.

STEP 2:

1. ADDING THE REQUIREMENT

- Select Booking Number and Right click then "EDIT"

navis 3.7.3.10.328055 ClusterNode2 ICTSI/PH/SBITC/SBITC/sealand.maersk.user1

Unit Gate Windows Help

Bookings x

Number	Line Op	Ves. Visit	Ves. Phase	Agent	Shipper	Shipper Name	POL	Trucking Company	POD-1	POD-2	OPT-1	Origin	Dest
BILL0079K	MSK	BILL007MCT	Working				PHGOO		HKHKG				
BILL0088-1	MSK	BILL0088	Inbound				PHSFS		CNTXG				
BILL0088SBITC	MSK	BILLING008SBITC	Working				PHSFS		HKHKG				
MALIG	MCC	MCC0002-19	Inbound				PHSFS		SGSIN				
MCC0004	MCC	MCC0004-19	Inbound		DEL MONTE PHILIPPINES INC.	DEL MONTE PHILIPPINES INC.	PHSFS		CNYAT				
MCC002	MCC	MCC0002-19	Inbound				PHSFS		CNYAT				
SAMPLE EDO	MSK	MCC0002-19	Inbound		AGX EXPRESS PHILIPPINES INC.	AGX EXPRESS PHILIPPINES INC.	PHSFS		CNYTN				
TEST	MCC	MCC0001-20	Inbound				PHSFS		KRKWY				

Right-click context menu for SAMPLE EDO:

- Edit
- + Add
- Delete
- Export SNX File
- Inspect Booking
- Record Service Event
- Update Holds/Permissions

Fill "REQUIRED FIELDS". Click "+"



Edit Booking SAMPLEBOOK

*Number: SAMPLE EDO *Line Operator: MSK (MAERSK LINE)
*Vessel Visit: MCC0002-19 (JACKSON BAY,MCC03,S ... *Port of Load: PHSFS (SUBIC)
*Port of Discharge: CNYTN (YANTIAN) Second Port of Discharge: --
Optional POD-1: -- Trucking Company: --
Shipper: AGX EXPRESS PHILIPPINES INC Consignee: --
Origin: -- Destination: --
Agent: -- Client Ref.Number: --
Dispatch Reserved: -- *Freight Kind: FCL
Owned/Leased: -- Shipping Mode: --
 Override Cutoff Dray Status: --
Special Stow: -- Special Stow 2: --
Special Stow 3: -- Hold Partials
Stow block: -- Prevent Type Substitution
Hazards: Add Hazard Empty Pickup Location: --
Stuffing Location: -- Full Return Location: --
Latest Date: -- *Category: Export
Notes: -- Override cutoffs for rail containers

Booking Items

Actions	Display	Qty	Tally Out	Tally In	Seq Nbr	ISO	Length	ISO group	Height	Is OOG	Commodity
No Data to display.											

0:0

Save Close Help

STEP 3:

2. NOMINATION OF EQUIPMENT (GENERAL PURPOSE / SPECIAL CONTAINERS)
 - Upon creation of Container Booking Requirement, the system will require the creator for the:
 - a. QUANTITY – nominated number of containers.
 - b. EQUIPMENT TYPE – iso type required of the client.

Note: LENGTH and HEIGHT will be auto-filled once above information are filled.

 - REEFER – will need to fill the TEMP REQ
 - TANKS – will need to fill the HAZ codes
 - OOG – will need to fill the:
 - Overlong BACK and FRONT or RIGHT and LEFT (for over width)
 - Over Height – for open top containers of for over height cargoes
 - c. GRADE – the required container class.
 - d. CONTAINER PREFIX RANGES – this is optional. But this will filter your containers based on the container PREFIX and Number ranger.

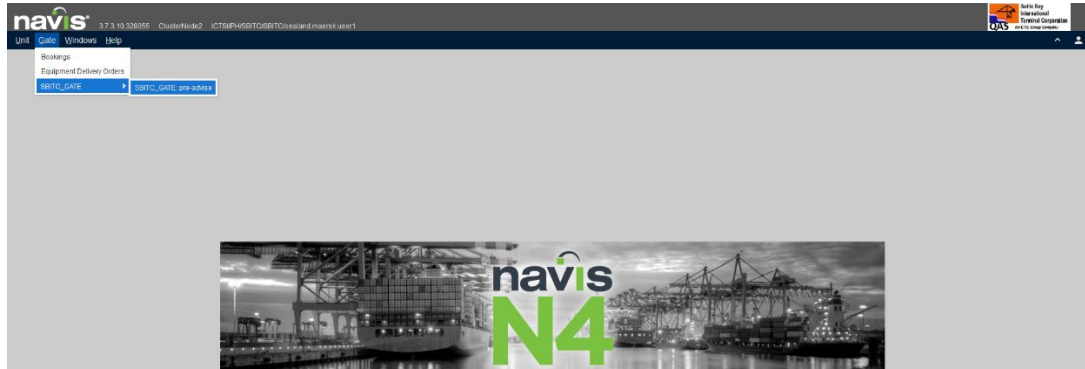
Click "SAVE" and close to update the Booking.

Qty	Tally Out	Tally In	Seq Nbr	ISO	Length	ISO group	Height	Is OOG	Commodity
2	0	0	4530	40	Refrigerated container	9'6"			

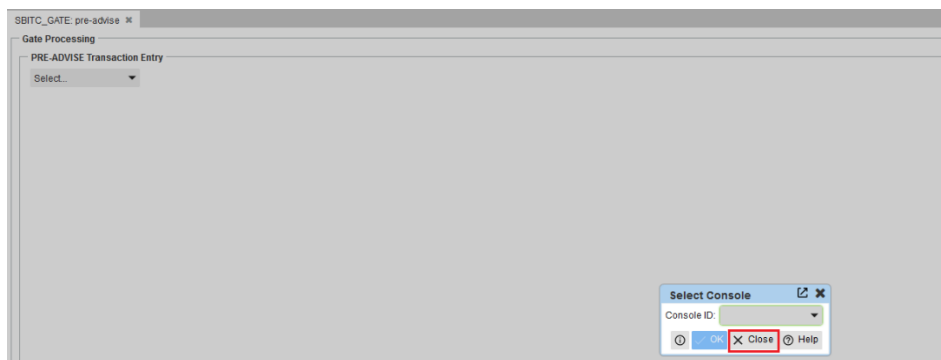
Click "CLOSE" if final charges are made and to complete the booking creation process.



SBITC CONTAINER PRE-ADVISE CREATION

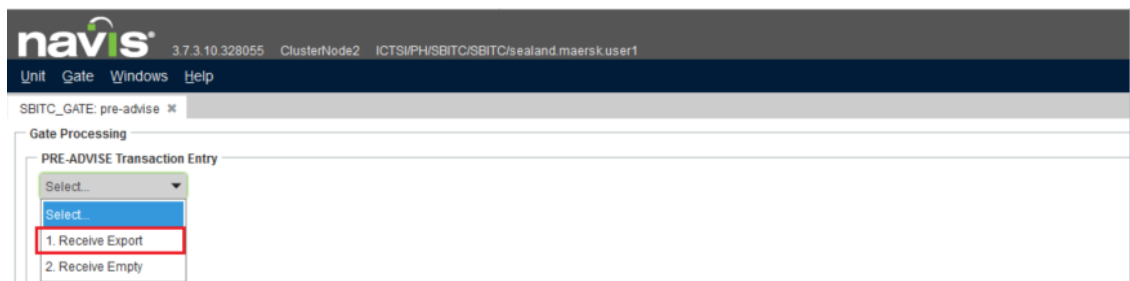


- Create PRE-ADVISE
- Go to GATE > Dropdown “SBITC_GATE: pre-advise”



Loading screen > click “CLOSE” to proceed.

RECEIVE EXPORT CONTAINER

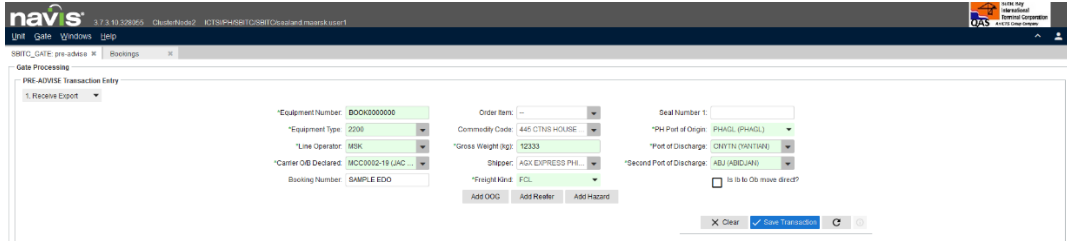


Fill up the necessary information for container pre-advise creation.

- Line Operator
- Booking Number
- Equipment Number
- Carrier O/B Declared
- Booking Number
- Commodity Code (see Annex A)
- Gross Weight in KG
- Shipper



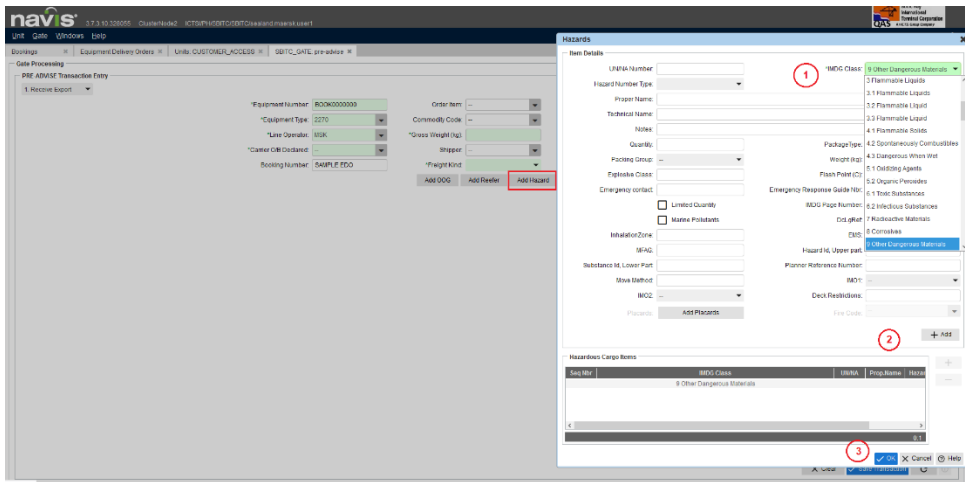
- Freight Kind
- Seal Number – requirement in FCL Container
- PH Port of Origin
- Port of Discharge – Transshipment Port
- Second Port of Discharge – Final Port of Discharge (see PDF File for UNLOC POD)



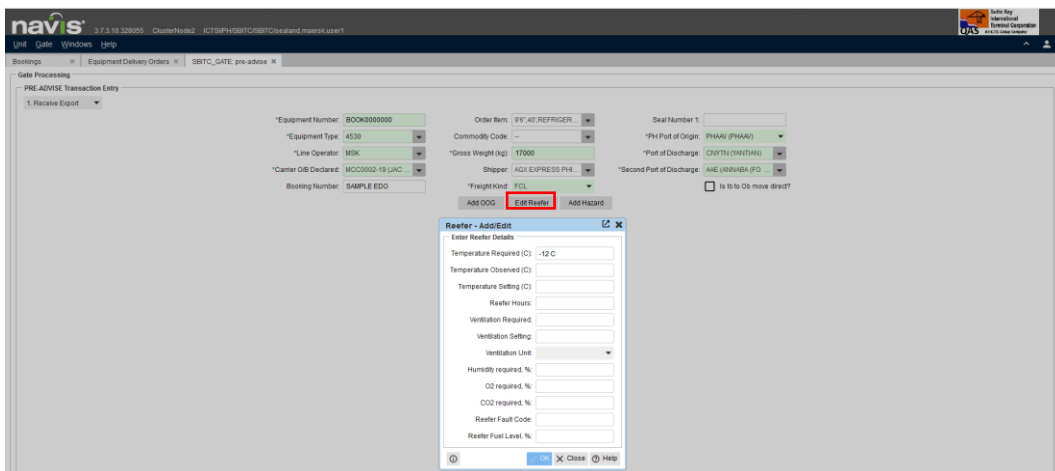
Click “SAVE” to complete the transaction.

Pre-advise Creation for Special Containers:

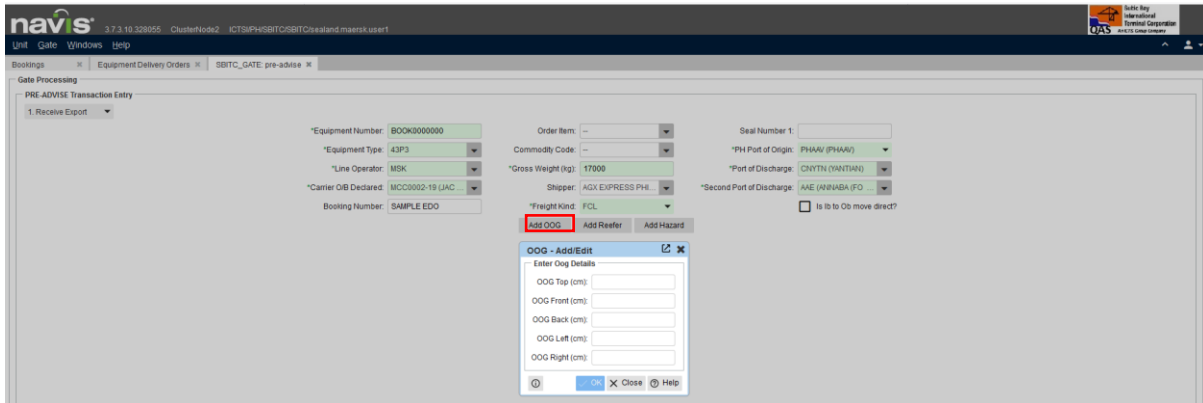
HAZARDOUS CONTAINERS



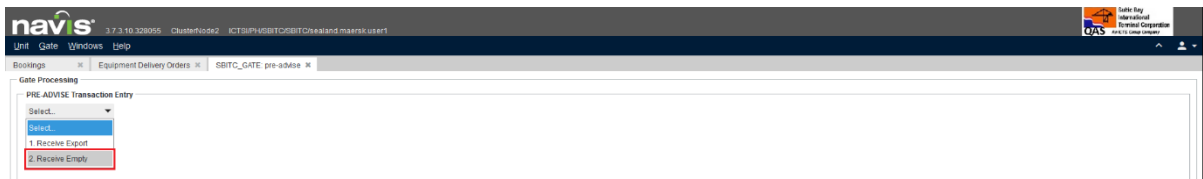
REEFER CONTAINERS



OOG (Out of Gauge) CONTAINERS

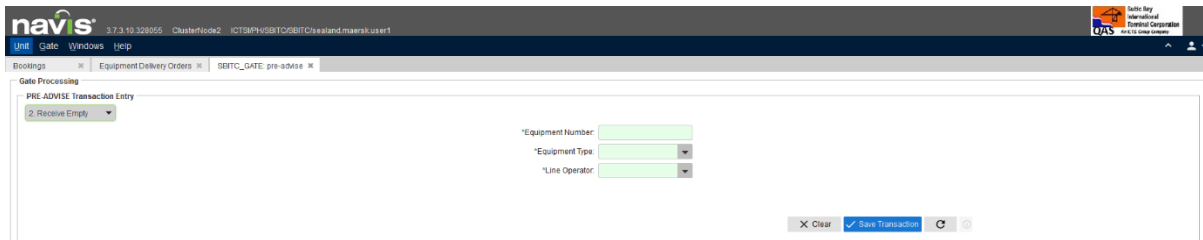


RECEIVE EMPTY CONTAINER



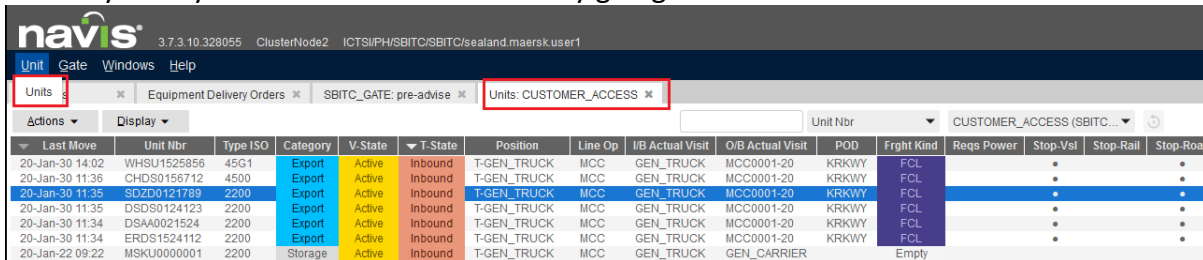
Fill up the necessary information for container pre-advise creation.

- Line Operator
- Equipment Number
- Equipment Type



Click **“SAVE”** to complete the transaction.

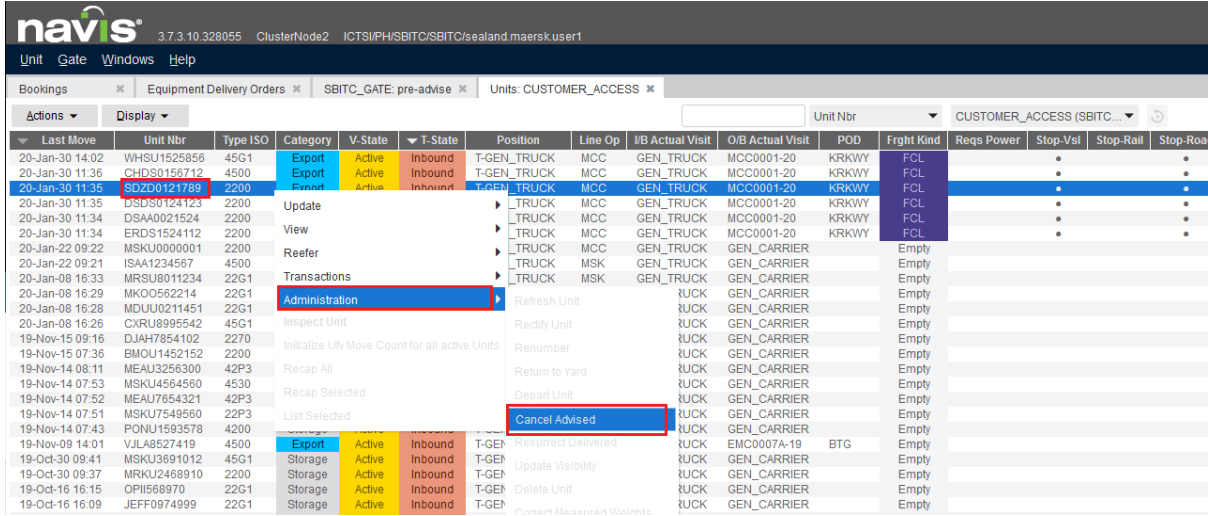
You may view your Pre-Advised Container by going to. **UNITS**



Last Move	Unit Nbr	Type ISO	Category	V-State	T-State	Position	Line Op	I/B Actual Visit	O/B Actual Visit	POD	Frght Kind	Reqs Power	Stop-Vst	Stop-Rail	Stop-Road
20-Jan-30 14:02	WHSU1525856	45G1	Export	Active	Inbound	T-GEN_TRUCK	MCC	GEN_TRUCK	MCC0001-20	KRKWY	FCL				
20-Jan-30 11:36	CHDS0156712	4500	Export	Active	Inbound	T-GEN_TRUCK	MCC	GEN_TRUCK	MCC0001-20	KRKWY	FCL				
20-Jan-30 11:35	SDZ00121769	2200	Export	Active	Inbound	T-GEN_TRUCK	MCC	GEN_TRUCK	MCC0001-20	KRKWY	FCL				
20-Jan-30 11:35	DSDS0124123	2200	Export	Active	Inbound	T-GEN_TRUCK	MCC	GEN_TRUCK	MCC0001-20	KRKWY	FCL				
20-Jan-30 11:34	DSAA0021524	2200	Export	Active	Inbound	T-GEN_TRUCK	MCC	GEN_TRUCK	MCC0001-20	KRKWY	FCL				
20-Jan-30 11:34	ERDS1524112	2200	Export	Active	Inbound	T-GEN_TRUCK	MCC	GEN_TRUCK	MCC0001-20	KRKWY	FCL				
20-Jan-22 09:22	MSKU0000001	2200	Storage	Active	Inbound	T-GEN_TRUCK	MCC	GEN_TRUCK	GEN_CARRIER		Empty				

CANCEL PRE-ADVISE CREATION:

Go to: UNITS > RIGHT CLICK CONTAINER > ADMINISTRATION > CANCEL ADVISED> click “YES”



Last Move	Unit Nbr	Type ISO	Category	V-State	T-State	Position	Line Op	I/B Actual Visit	O/B Actual Visit	POD	Frght Kind	Reqs Power	Stop-Vsl	Stop-Rail	Stop-Road
20-Jan-30 14:02	WHSU1525856	45G1	Export	Active	Inbound	T-GEN_TRUCK	MCC	GEN_TRUCK	MCC0001-20	KRKWY	FCL				
20-Jan-30 11:36	CHDS0153742	4500	Export	Active	Inbound	T-GEN_TRUCK	MCC	GEN_TRUCK	MCC0001-20	KRKWY	FCL				
20-Jan-30 11:35	SD280121789	2200	Export	Active	Inbound	T-GEN_TRUCK	MCC	GEN_TRUCK	MCC0001-20	KRKWY	FCL				
20-Jan-30 11:34	DSAA0021524	2200	Update			T-TRUCK	MCC	GEN_TRUCK	MCC0001-20	KRKWY	FCL				
20-Jan-30 11:34	ERDS1524112	2200	View			T-TRUCK	MCC	GEN_TRUCK	MCC0001-20	KRKWY	FCL				
20-Jan-22 09:22	MSKU0000001	2200	Reefer			T-TRUCK	MCC	GEN_TRUCK	GEN_CARRIER		Empty				
20-Jan-22 09:21	ISAA1234567	4500	Transactions			T-TRUCK	MSK	GEN_TRUCK	GEN_CARRIER		Empty				
20-Jan-08 16:33	MRSU8011234	22G1	Administration			T-TRUCK	MSK	GEN_TRUCK	GEN_CARRIER		Empty				
20-Jan-08 16:29	MKOU562214	22G1	Administration			T-TRUCK	MSK	GEN_TRUCK	GEN_CARRIER		Empty				
20-Jan-08 16:28	MDUU0211451	22G1	Administration			T-TRUCK	MSK	GEN_TRUCK	GEN_CARRIER		Empty				
20-Jan-08 16:26	CXRU8995542	45G1	Administration			T-TRUCK	MSK	GEN_TRUCK	GEN_CARRIER		Empty				
19-Nov-15 09:16	DJAH7854102	2270	Administration			T-TRUCK	MSK	GEN_TRUCK	GEN_CARRIER		Empty				
19-Nov-15 07:36	BMOU1452152	2200	Administration			T-TRUCK	MSK	GEN_TRUCK	GEN_CARRIER		Empty				
19-Nov-14 08:11	MEAU3256300	42P3	Administration			T-TRUCK	MSK	GEN_TRUCK	GEN_CARRIER		Empty				
19-Nov-14 07:53	MSKU4564560	4530	Administration			T-TRUCK	MSK	GEN_TRUCK	GEN_CARRIER		Empty				
19-Nov-14 07:52	MEAU7654321	42P3	Administration			T-TRUCK	MSK	GEN_TRUCK	GEN_CARRIER		Empty				
19-Nov-14 07:51	MSKU7549560	22P3	Administration			T-TRUCK	MSK	GEN_TRUCK	GEN_CARRIER		Empty				
19-Nov-14 07:43	PONU1593578	4200	Administration			T-TRUCK	MSK	GEN_TRUCK	GEN_CARRIER		Empty				
19-Nov-09 14:01	VJL9527419	4500	Administration			T-TRUCK	MSK	GEN_TRUCK	GEN_CARRIER		Empty				
19-Oct-30 09:41	MSKU3691012	45G1	Storage	Active	Inbound	T-GEN				BTG					
19-Oct-30 09:37	MRKU2468910	2200	Storage	Active	Inbound	T-GEN									
19-Oct-18 16:15	OPII568970	22G1	Storage	Active	Inbound	T-GEN									
19-Oct-16 16:09	JEFF0974999	22G1	Storage	Active	Inbound	T-GEN									

Pre-Advise - Common Errors

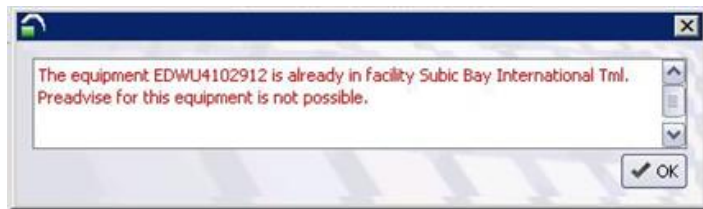
A. Equipment Unknown or Container Check Digit Validation Failed



SOLUTION:

- Register the Container by Providing/Entering the Correct Container Details.
- Double Check the Container Number and ISO/Equipment Type.

B. Equipment is already in Facility, Pre-Advise for the Equipment is not Possible



SOLUTION:

- Contact SBITC - Operations (SBITC-OPGates@sbitc.ph) for us to Validate if the Container is already In-Yard



C. If the User can't find the Assigned Vessel Visit/Consignee

SOLUTION:

- Contact SBITC - Operations (SBITC-OPDox@sbitc.ph) to Verify and Create/Register Vessel Visit/ Consignee

Proper Input of Container Number

- Do not use "-" or any Special Characters including SPACE Bar.

Wrong Input:

APHU727249-2

APHU 727249-2

APHU 7272492

Correct Input:

APHU7272492



ANNEX A: CARGO COMMODITY CODE



ITEM NO	COMMODITY CODE	COMMODITY DESCRIPTION
1	20FTR	20' FTR TRAILER
2	40FTR	40' FTR TRAILER
3	ABACA	ABACA PULP
4	ACARB	ACTIVATED CARBON
5	ACIDOIL	ACID OIL
6	ACRY	ACRYLEL
7	AJI	AJINOMOTO PRODUCTS
8	ALC	ALCOHOL
9	ALDEHYDE	ALDEHYDE
10	ANMLFEED	ANIMAL FEEDS
11	ANTRCT	ANTHRACITE
12	APLCS	APPLIANCES
13	APPLE	APPLE
14	ARGON	ARGON
15	ASBES	ASBESTOS
16	ASRTDCPRO	ASSORTED CHILLED PRODUCTS
17	ASRTDCURL	ASSORTED CURLS
18	ASRTDFOOD	ASSORTED FOODS
19	ASRTDMERC	ASSORTED MERCHANDISE
20	ASRTDPROD	ASSORTED PRODUCT
21	ASRTDSEAS	ASSORTED SEASHELLS
22	ASRTDSNAC	ASSORTED SNACKS
23	ASRTDTILE	ASSORTED TILES
24	ASRTDTIRE	ASSORTED TIRES
25	ATP	?ATP?
26	AUTOMBL	AUTOMOBILE
27	BACKHOE	BACKHOE
28	BAMBOO	BAMBOO
29	BANACHIP	BANANA CHIPS
30	BANASEEDLI	BANANA SEEDLING
31	BATTRY	BATTERY
32	BCABLE	BRACKET CABLES
33	BCYCL	BICYCLE
34	BEDD	BEDDINGS
35	BEER	BEER
36	BIGFRUIT	BIG FRUITS
37	BISCUIT	BISCUITS
38	BITUMEN	BITUMEN LIQUID PRODUCTS
39	BOOK	BOOKS



40	BOTHON	bottled honney
41	BRICK	BRICKS
42	BROKEGLAS	BROKEN GLASS
43	BRONZE	BRONZE
44	BSAN	BLACK SAND
45	BTIT	BOND TITE
46	BWATER	BOTTLED WATER
47	CALLET	CALLETS
48	CANGOOD	CANNED GOODS
49	CAO	Coconut Acidulated Oil
50	CAR	CAR
51	CART	CARTON
52	CASS	CASSAVA
53	CATA	CATALYST
54	CBAG	CEMENT BAGS
55	CBANA	CULTURED BANANA
56	CBEAN	COFFEE BEANS
57	CBO	CORRUGATED BOXES
58	CCAK	COPRA CAKE
59	CCHAR	CHEMICAL CHARCOAL
60	CCHARCO	CARBON CHARCOAL
61	CDIESL	CONTAMINATED DIESEL
62	CDIOXID	CARBON DIOXIDE
63	CEME	CEMENT
64	CERA	CERAMICS
65	CFERROC	CARBON FERROCHROME
66	CFIBE	COCO FIBER
67	CFLOUR	CASSAVA FLOUR
68	CGA	COMPRESS GAS
69	CGRIT	CORN GRITS
70	CHLO	CHLORINE
71	CHOC	CHOCOLATE
72	CHRO	CHROMITE
73	CMIL	COPRA MILL
74	COAL	COAL
75	COBR	COBRA
76	COCA	COCA-COLA PRODUCTS
77	COCOP	coconut products
78	COI	COCONUT OIL
79	COIL	COOKING OIL
80	COMP	COMPRESSOR
81	CONC	CONCENTRATES
82	CONSM	CONSTRUCTION MATERIALS
83	COOP	COOPER
84	COR	COPPER ORE
85	CORN	CORNSTARTH



86	CPart	Computer Parts
87	CPIN	CARRIBEAN PINE
88	CPOWE	CHAMP POWER
89	CPRODU	COCONUT PRODUCTS
90	CRAM	CROWN / RAM MATERIALS
91	CREA	CREAMER
92	CSCHARCO	COCONUT SHELL CHARCOAL
93	CSKI	CATTLE SKIN
94	CSLOIL	Contaminated Sludge Oil
95	CWATER	COLLERS WATERS
96	CYLI	CYLINDER
97	DBOX	DURA BOX
98	DBRAN	DECOART & OTHER BRANDS
99	DELMONTE	DEL MONTE PRODUCTS
100	DIESEL	DIESEL
101	DMA	DEFFECTIVE MACHINE
102	DMACHIN	DAMAGE MACHINE
103	DMANGO	DRIED MANGO
104	DPAPPL	DRIED PINEAPPLE
105	DPRS	DIAPERS
106	DRUM	DRUMS
107	DSPOT	DRIED SWEET POTATO
108	DTAILING	DECONTAMINATED TAILINGS
109	DTRGNT	DETERGENT
110	DUMMY	DUMMY COMMODITY
111	EBOTTLES	EMPTY BOTTLES
112	ECTR	EMPTY CONTAINER
113	ECYLDR	EMPTY CYLINDER
114	EDRINK	ENERGY DRINK
115	EEQ	ELECTRICAL EQUIPMENT
116	EGGS	EGGS
117	EHVAN	EMPTY HOG VAN
118	EISOTNK	EMPTY ISO TANK
119	ELE	?ELE?
120	ENERGN	ENERGEN
121	EPRODUC	EQ PRODUCT
122	ERFR	EMPTY REEFER
123	ESACK	EMPTY SACKS
124	ESHEL	EMPTY SHELL
125	ESTANK	EMPTY STAINLESS TANK
126	ETHA	ETHANOL
127	ETRAY	EGG TRAY
128	EUSED Oil	ENGINE USED OIL
129	EXPLSV	EXPLOSIVES
130	FACID	FATTY ACID OIL
131	FARMIN	FARMIN



132	FBAGS	FLEXIBAGS
133	FCATS	FILM CATALYST
134	FCULLETS	FLINT CULLETS
135	FEEDS	FEEDS
136	FGLASs	FIBER GLASS
137	FIESTA	FIESTA BRAND PRODUCTS
138	FIRECRACK	FIRE CRACKERS
139	FIREWD	FIRE WOOD
140	FLOORPLY	FLOORBASED PLYWOOD
141	FLOUR	FLOUR
142	FLOWER	FLOWERS
143	FLUMBER	FALCATA LUMBER
144	FMCHN	FLANGES MACHINE
145	FMILL	FEATHER MILL
146	FNICKEL	FERRO NICKEL
147	FOAM	FOAM
148	FOODSTAF	Food Staff
149	FORK	FORKLIFT
150	FPRO	FURNITURE PRODUCTS
151	FPROPROD	FROZEN PRODUCTS
152	FRESHBANA	FRESH BANANAS
153	FRESHCHIC	FRESH CHICKEN
154	FRESHPAPL	FRESH PINEAPPLE
155	FRESHPLNT	FRESH PLANT
156	FRESHVEG	FRESH VEGETABLES
157	FROZCHIC	FROZEN CHICKEN
158	FROZMEAT	FROZEN MEATS
159	FROZMNGO	FROZEN MANGOES
160	FROZOCT	FROZEN OCTOPUS
161	FROZPAS	FROZEN PASSION
162	FROZPRAWN	FROZEN PRAWNS
163	FRPWALL	FRP WALLS
164	FRTLZR	FERTILIZER
165	FRUCRNSYP	FRUCTOSE CORN SYRUP
166	FUELDSPNSR	FUEL DISPENSER
167	FUELWOODCHAR	FUEL WOOD CHARCOAL
168	FULPWALL	FULP WALL
169	FWINE	FIGHTER WINE
170	GAR	?GAR?
171	GEN	?GEN?
172	GENF	GENF
173	GENSET	GENERATOR SET
174	GIBUND	GALVANIZED IRON BUNDLE
175	GLULQD	GLUCOSE LIQUID
176	GLUMBE	GMELINA LUMBER
177	GLUSYRP	GLUCOSE SYRUP



178	GLYCRN	GLYCERINE
179	GMACHIN	GAMING MACHINE
180	GMERCH	GENERAL MERCHANDISE
181	GUMARB	GUM ARABIC NATURAL
182	GUYABANO	GUYABANO
183	HATCHEGGS	HATCHING EGGS
184	HAY	HAY
185	HCRAFT	HANDY CRAFTS
186	HEMAPWDR	HEMATITE POWDER
187	HEXYL CINNAMIC	HEXYL CINNAMIC
188	HMIL	HARD MILL
189	HORSHOE	HORSE SHOE
190	HOUEFFCT	HOUSEHOLD EFFECT
191	HPPIPING	HIGH PRESURE PIPING PLANT
192	HRDWITEM	HARDWARE ITEMS
193	HYDACID	HYDRAULIC ACID
194	ICECRM	ICE CREAM
195	INDSTARCH	INDUSTRIAL STARCH
196	INOCHEM	INORGANIC CHEMICAL
197	IRONSCRCP	IRON SCRAP
198	IRONSND	IRON SAND
199	JNKFOOD	JUNK FOODS
200	JUICES	JUICES
201	KALC	KALCOL
202	KNCKCART	KNOCKDOWN CARTONS
203	KOPIKO	KOPIKO
204	KRAFTBAG	KRAFTS BAGS
205	LANZO	LANZONES
206	LIME	LIMESTONE
207	LIVEHOG	LIVE HOG
208	LIVESTK	LIVESTOCK
209	LKKSPRD	LKKS PROD
210	LLUMBER	LAWAAN LUMBER
211	LMBR	LUMBER
212	LPGTNK	LPG TANK
213	LQDAMI	liquid amine
214	LQDBAG	LIQUID BAGS
215	LQDCCAR	LIQUID CALCIUM CARBONATE
216	LQDCHLR	LIQUID CHLORINE
217	LQDMLK	LIQUID MILK
218	LQDOQY	LIQUID OXYGEN
219	LQDSGR	liquid sugar
220	LQDWST	LIQUID WASTE
221	LSCRGO	LOOSE CARGO
222	LTHRLEAF	LEATHER LEAF
223	LUBEOIL	LUBE OIL



224	MATCH	MATCHES/POSPORO
225	MATSTEEL	MATERIALS FOR STEEL MAKING
226	MCHPART	MACHINE PARTS
227	METAL	METAL
228	METALCR	METAL CRATES
229	METALPA	METAL PALLETE
230	METHA	METHANOL
231	MGM	MANGIUM
232	MHGNYFIN	MAHOGANY FINISHED PRODUCT
233	MHGNYLMB	MAHOGANY LUMBER
234	MHGNYPLNT	mahogany planted species
235	MICROSI	MICRO SILICA
236	MILKBX	MILK BOX
237	MILLSCL	MILL SCALE
238	MIXFAT	MIXED FATTY
239	MIXFBR	MIXED FIBER FEEDS
240	MNGNSE	MANGANESE ORE
241	MNGOFRESH	MANGO FRESH
242	MNRLWTR	MINERAL WATER
243	MONGOBEAN	MONGO BEANS
244	MORINGALE	Moringa Leaves
245	MOTOR	MOTORCYCLES
246	MT	MT
247	MTY	MTY
248	NESCA	NESCAFE AND OTHER BRANDS
249	NIKEL	NIKEL
250	NITRO	NITROGEN
251	NSTLE	NESTLE PRODUCTS
252	NTVEPROD	NATIVE PRODUCTS
253	ORE	ORE
254	ORGCHEM	ORG CHEM
255	PALEGEM	PALETTE GEMILINA
256	PALMKRNL	PALM KERNEL
257	PALMOIL	PALM OIL
258	PAPERPRD	PAPER PRODUCTS
259	PAPERROLL	PAPER ROLL
260	PAPLPULP	PINEAPPLE PULP
261	PENOLQD	PENOL LIQUID
262	PEPSO	PEPSI-COLA PRODUCTS
263	PHARMAPRD	PHARMA PRODUCTS
264	PHILUPROD	PHILUSA PRODUCTS
265	PINAKRAT	PINAKURAT
266	PINETREE	PINE TREE
267	PIPES	PIPES
268	PKI	PKI RAW PRODUCTS
269	PLNBRD	PLAIN BOARD



270	PLNSHEET	PLAIN SHEETS
271	PLSTCPAL	PLASTIC PALLET
272	PLSTCRE	PLASTIC REISIN
273	PLSTCSC	PLASTIC SCRAPPED
274	PLSTCSETNK	PLASTIC SEPTIC TANK
275	PLSTCTYPE	PLASTIC TYPE
276	PLYBRD	PLYBOARD
277	PLYWD	PLYWOOD
278	PORKBEEF	PORK AND BEEF CARCASS
279	POTCHL	POTASSIUM CHLORATE
280	POTSUL	POTASSIUM SULFUR
281	POULEQ	POULTRY EQUIPMENT
282	POULME	POULTRY MEAL
283	PROMEAT	PROCESSED MEAT
284	PRSNLEFCT	PERSONAL EFFECTS
285	PUREGLY	PURIFIED GLYCERINE
286	PUSHCA	PUSH CART
287	PWDRMILK	POWDERED MILK
288	QCKPWDR	QUICKLIME POWDER
289	QRTS	QUARTS
290	RATTAN	RATTAN
291	RAWMAT	RAW MATERIALS
292	RAWRBR	RAW RUBBER
293	RBR	RUBBER
294	RBRBT	RUBBER BOOTS
295	RBRNDL	RUBBER SANDALS
296	REFRACMAT	REFRACTORY MATERIALS
297	REGULATR	REGULATOR
298	RFNDBLCOIL	REFINED BLEACH COCO OIL
299	RFNDGY	REFINED GLYCERINE
300	RICE	RICE
301	RICEGR	RICE GRAINS
302	RICHEMPRD	RI CHEMICAL PORODUCTS
303	RLDCOIL	ROLLED COIL
304	RLNCRGO	ROLLING CARGO
305	SALT	SALT
306	SAWDST	SAW DUST
307	SAWLMB	SAWN LUMBER
308	SCRBTLE	SCRAP BOTTLE
309	SCRCART	SCRAP CARTOON
310	SCRMET	SCRAP METAL
311	SCRPAPE	SCRAP PAPER
312	SCRRO	SCRAP ROOTS
313	SCRTOY	SCRAP TOYS
314	SCRTR	SCRAP TIRE
315	SEASHELL	SEA SHELL



316	SEAWEED	SEAWEEDES
317	SEAWGCVR	SEAWAGE COVER
318	SHAMPOO	SHAMPOO
319	SHARKOIL	SHARK OIL
320	SHELLPLTMAT	SHELL PLATE METAL
321	SHORTNG	SHORTENING
322	SILIMET	SILICON METAL
323	SILVORE	SILVER ORE
324	SOFTDRNK	Softdrinks
325	SOTANGHON	SOTANGHON
326	SOYBEAN	SOY BEAN MEAL
327	SOYSAUSE	SOY SAUCE
328	SPAREPRTS	SPARE PARTS
329	SPNTALUCATA	SPENT ALUMINUM CATALYST
330	SQUASH	SQUASH
331	STEELPAL	STEEL PALLETE
332	STEELTBLCHR	STEEL TABLES AND CHAIRS
333	STERALC	STERILE ALCOHOL
334	STUFTOY	STUFF TOYS
335	SUGAR	SUGAR
336	SULACID	SULFURIC ACID
337	SWTBANA	SWEETENED BANANA
338	SWTPAPA	SWEETENED PAPAYA
339	TANDUAYLIQ	TANDUAY LIQOUR
340	TELEQPMNT	TELECOM EQUIPMENT
341	TEST1	
342	THYLGAS	THYLENE GAS
343	TILE	TILES
344	TINCAN	TIN CAN
345	TIRE	TIRE
346	TISPAPER	TISSUE PAPER
347	TOBACCO	TOBACCO
348	TOMATO	TOMATO
349	TOOLEQUI	TOOLS EQUIPMENT
350	TRKTIRE	TRUCK TIRES
351	TRNSCARG	TRANS CARGO
352	UNKCHEM	UNKNOWN CHEMICALS
353	USEDMACH	USED MACHINE
354	USED OIL	USED OIL
355	USEDSPART	USED SPARE PARTS
356	USEDTRK	USED TRUCKS
357	VEGEOIL	VEGETABLE OIL
358	VINEGAR	VINEGAR
359	VINY	VINYL
360	VIRGINOIL	VIRGIN COCO OIL
361	VRSGOOD	VARIOUS GOODS



362	VRSMRCH	VARIOUS MERCHANDISE
363	WASHSND	WASHED SAND
364	WASTEASB	WASTE ASBESTOS
365	WASTEEXT	WATTLE EXTRACT
366	WASTELQD	WASTE LIQUID
367	WASTEMAT	WASTE MATERIAL
368	WASTEPROD	WASTE PRODUCT
369	WASTEPURI	WATER PURIFIER
370	WASTETRMNT	WATER TREATMENT
371	WHLCHR	WHEEL CHAIR
372	WINBOAR	WINDOW BOAR, CILL, SHELVING,LAM
373	WOODPLT	wood pallet
374	WOODPRD	WOOD PRODUCT
375	WOODPST	WOODEN POST
376	WOODSAW	WOOD SAW DUST PELLET
377	WOODTILE	WOOD TILE
378	WOODTOY	WOODEN TOYS
379	WSND	WASH SAND
380	YAKULT	YAKULT
381	ZESTO	ZESTO PRODUCTS



ANNEX B: FINAL PORT OF DISCHARGE LOCATION – 2ND PORT OF DISCHARGE

****See attached PDF File for 2nd Port of Discharge Country****