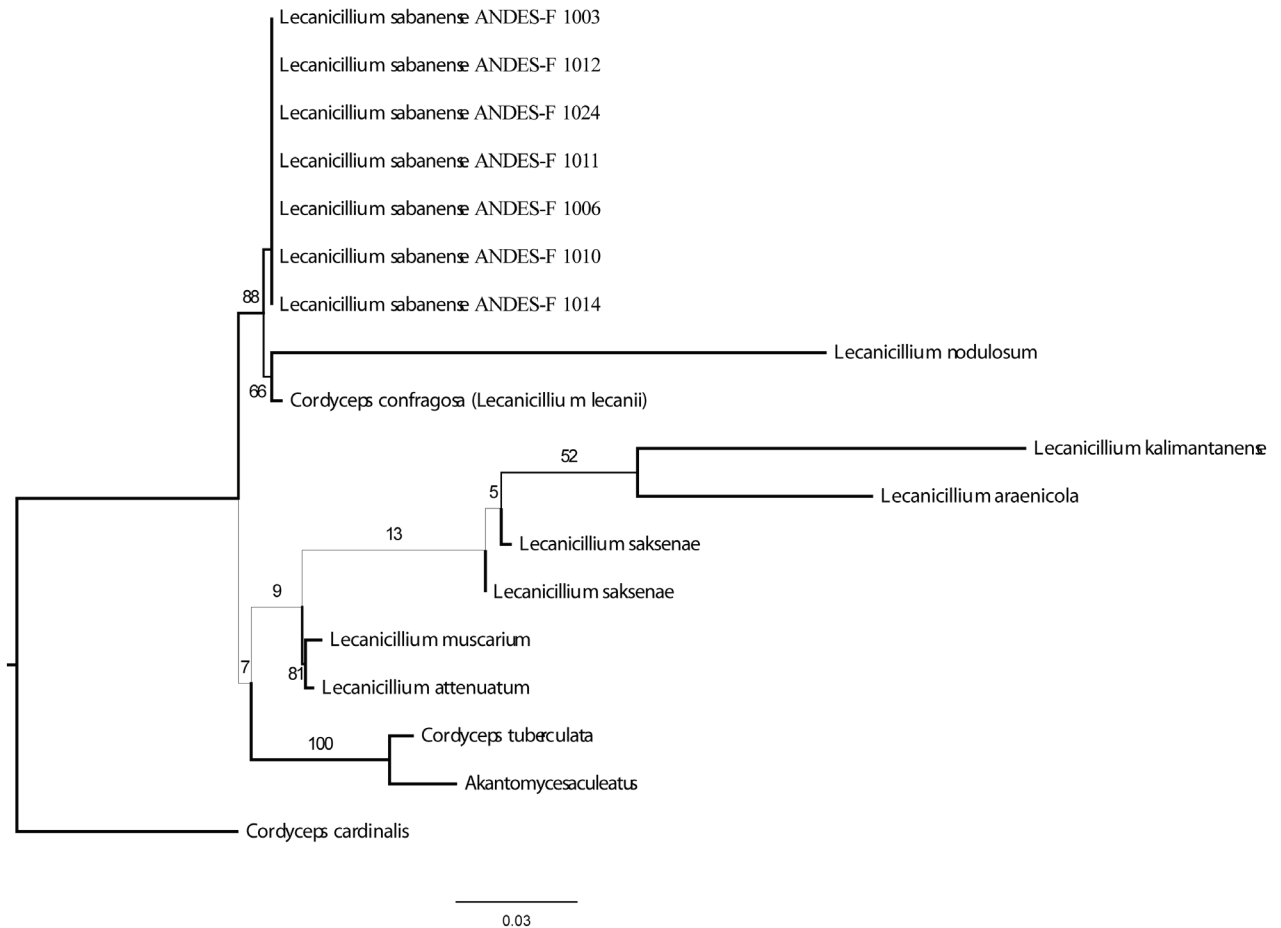
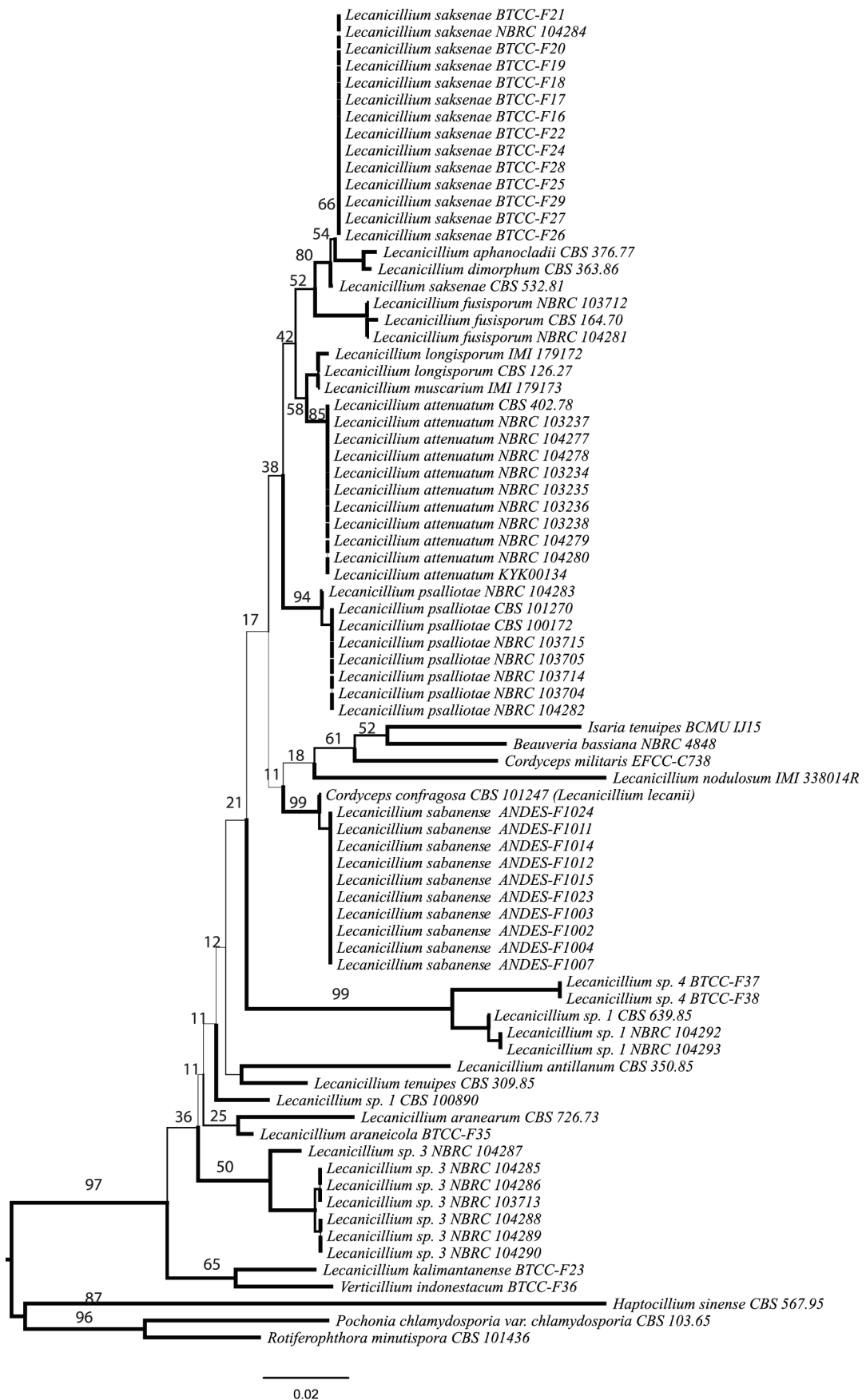


SUPPLEMENTARY FIGURE 1. Geolocation, concentration of particulate matter in the air, humidity, and precipitation of each sample site.



SUPPLEMENTARY FIGURE 2. Relationships inferred from Maximum Likelihood analysis of *Cordyceps* species with superficial stromata based on a combined data set of *ITS* and *TEF* gene regions, including *ITS* from *Lecanicillium nodulosum*, *Lecanicillium araneicola*, *Lecanicillium kalimantanense*, and *Lecanicillium saksenae*. Numbers above branches indicate Bootstrap support values from 1,000 replications. *Cordyceps cardinalis* was used as outgroup.



SUPPLEMENTARY FIGURE 3. Neighbor Joining analysis for the ITS region of *Lecanicillium* spp. included in Sukarno *et al.* (2009) as well as *Lecanicillium nodulosum* and *Lecanicillium sabanense*.