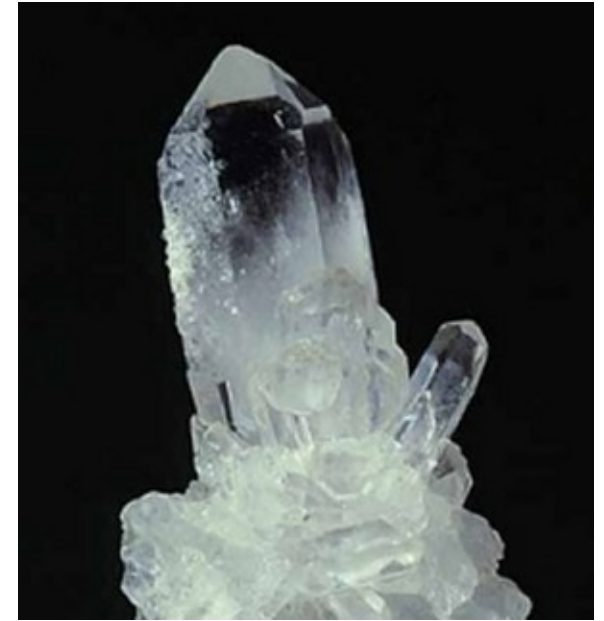


What is a fossil?

- A, B,C, or D



A



B



C



D

Definition of a fossil

A fossil is the preserved remains of the life of the past



Or traces of life that lived in the past = behavioural fossils



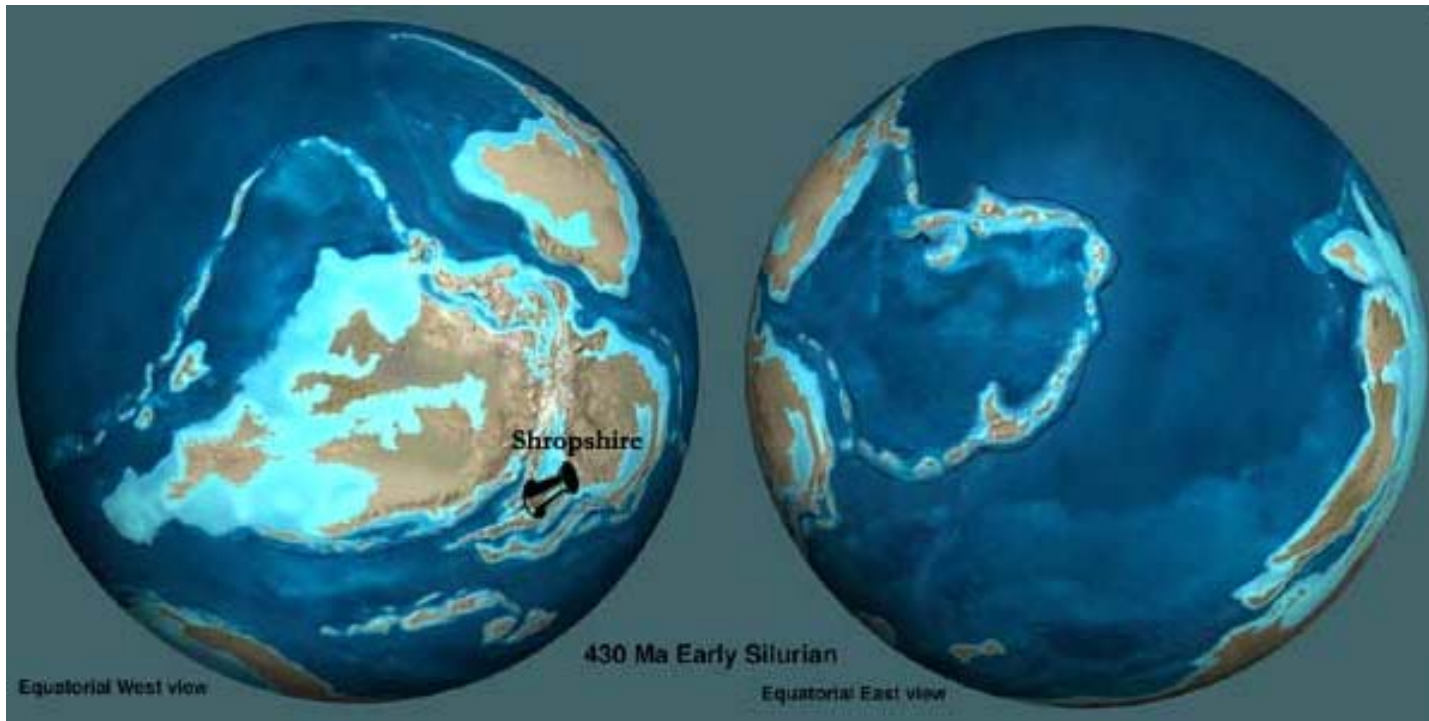
Fossils around us

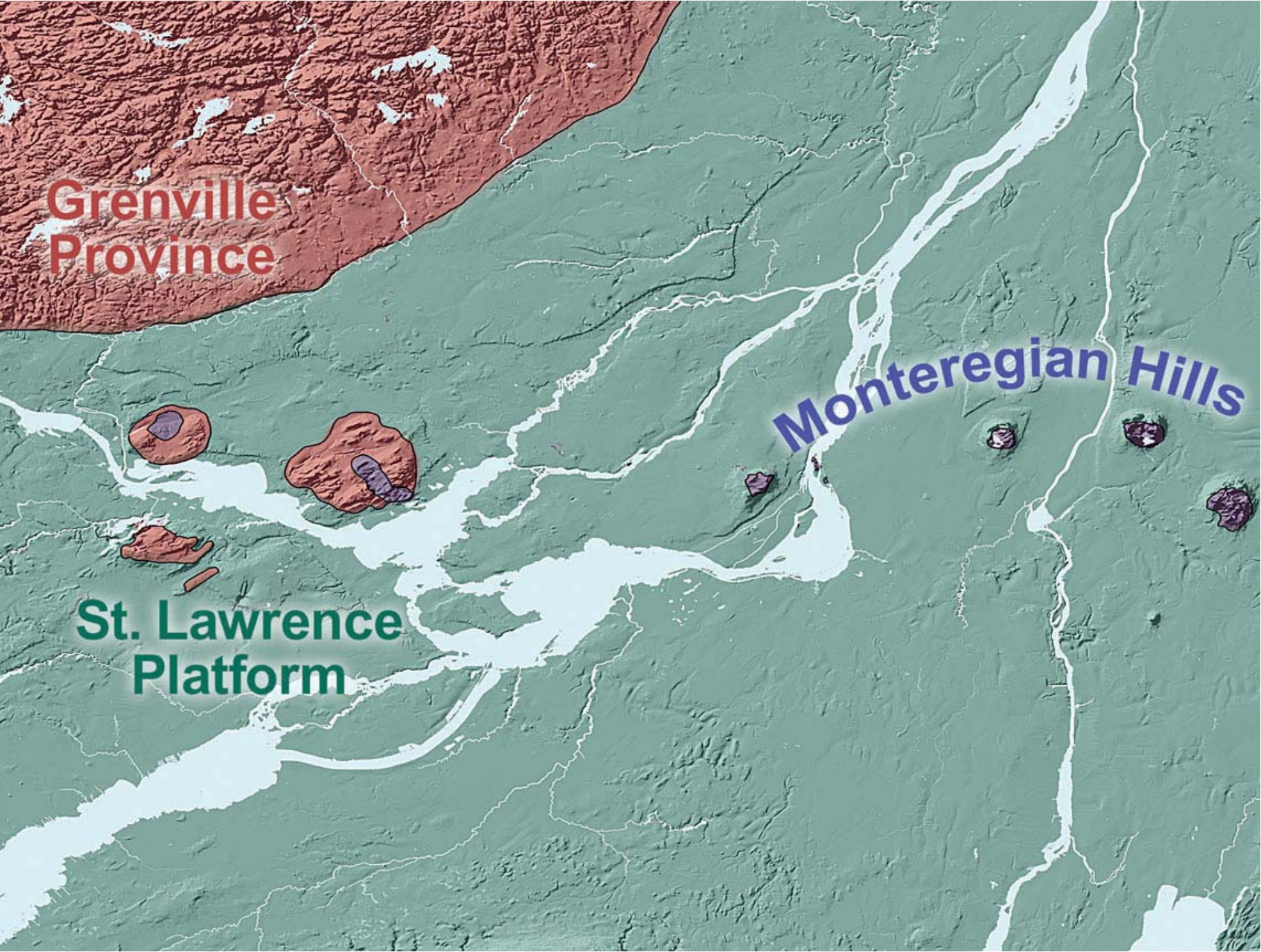


Fossils near us



Ordovician life 450 million years ago





**Grenville
Province**

Monteregian Hills

**St. Lawrence
Platform**

Reconstruction of Ordovician sea life

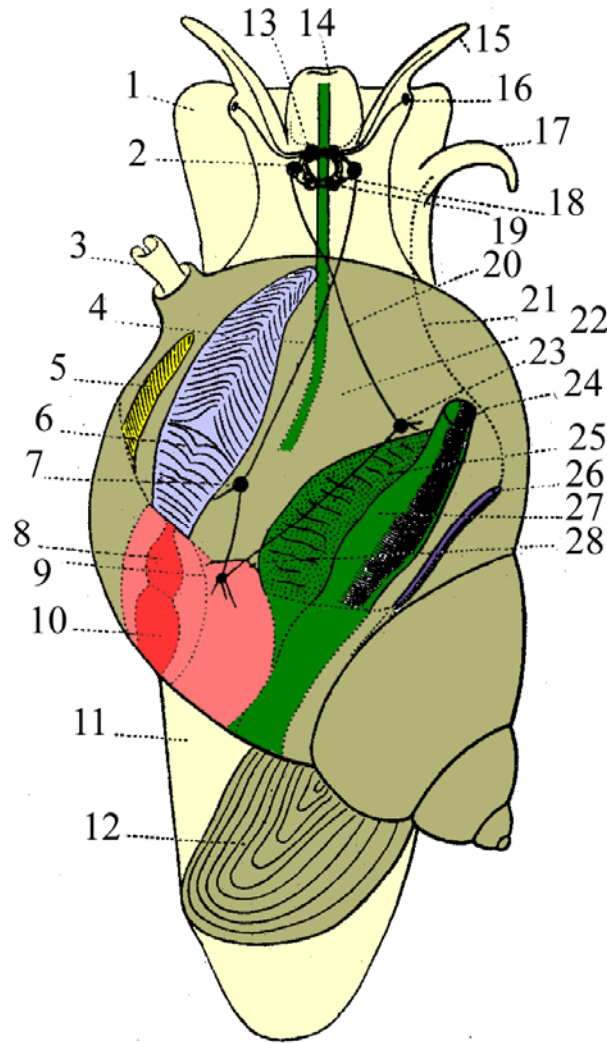


Gastropoda = stomach + foot



Gastropoda- snails and slugs

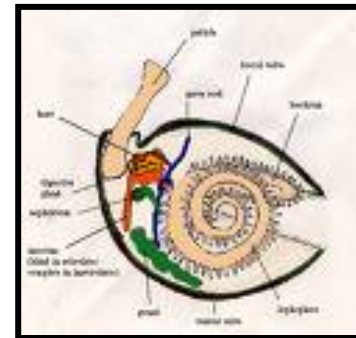
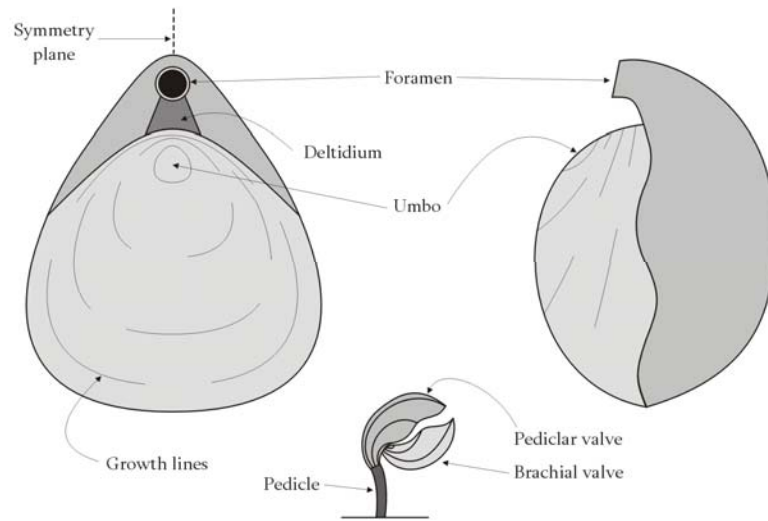
terrestrial or marine



Brachiopoda = arm + foot



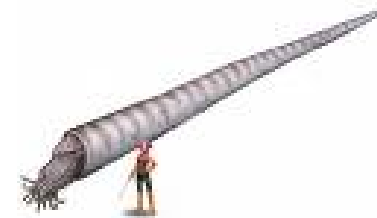
Brachiopods - modern forms



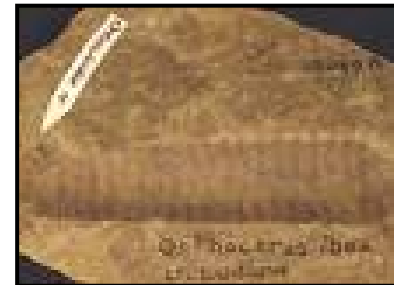
Cephalopoda = head + foot



Fossil cephalopods



Cameroeras



Coiled cephalopods

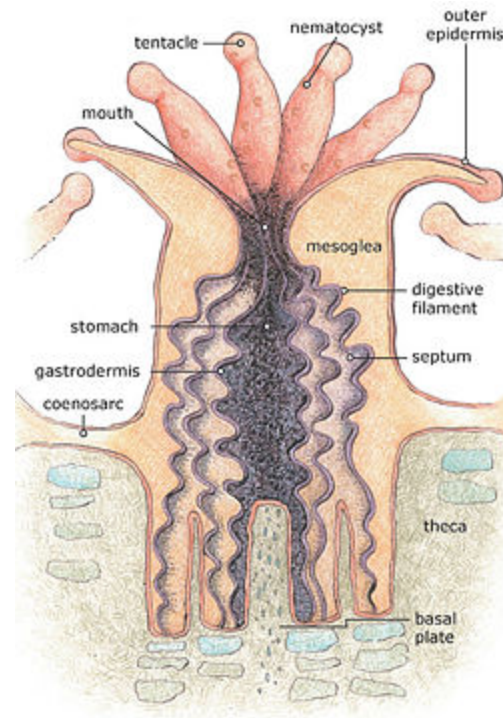


Ceolenterata = hollow + tissue

corals, comb jellies, jelly fish



The animal that builds coral

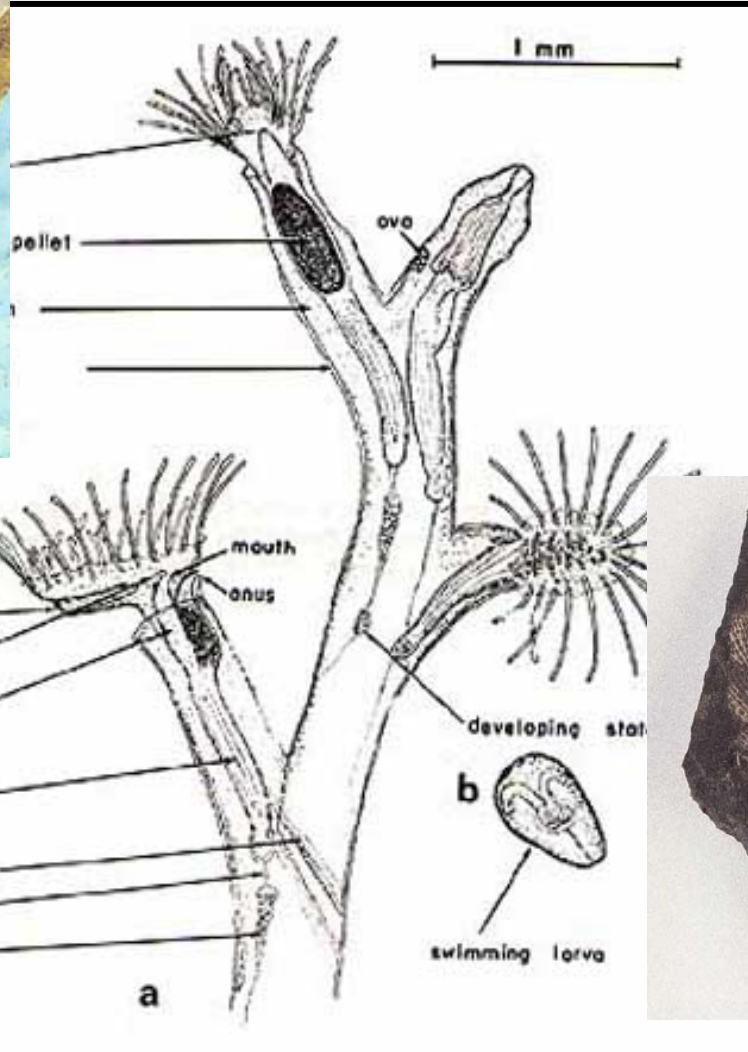


Bryozoans = moss + animal

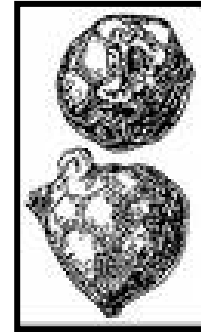
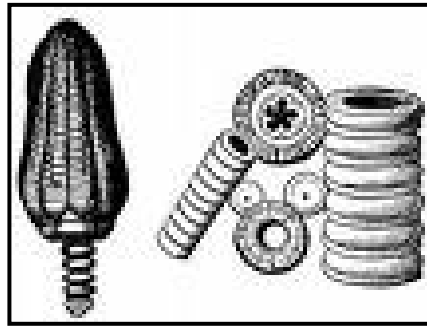
modern forms



Bryozoa fossil forms



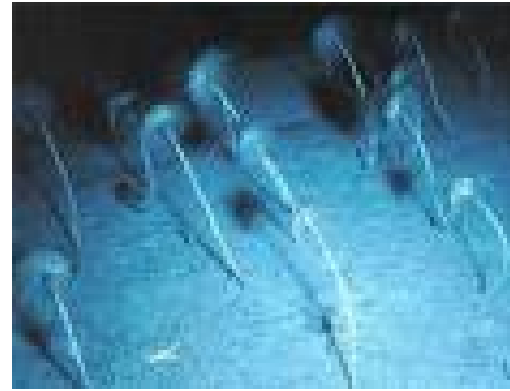
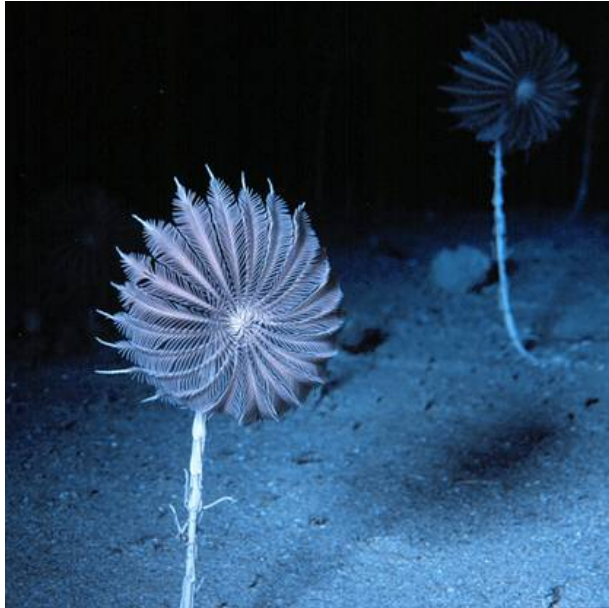
Crinoids and paracrinoids



Crinoids up close



Crinoidea = folded + form

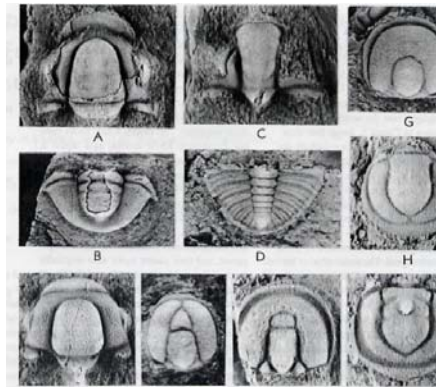


crinoidal limestone

from Carboniferous sea about 320 million years ago



Trilobita = 3 + lobe



Palmer et al *Geology* V12 Feb. 1984, p.93^J

Figure 2. Diagnostic Middle Cambrian trilobites from two boulders of Haymond Formation. J are mature holaspides unless otherwise indicated. A-F are index taxa from Boulder 1. A and Cranidium and pygidium of *Marjulia callosa* Walcott, -4 and -5. C and D: Intermediate holaspides and pygidium of *Bathyuriscus* sp., both -7. E: Cranidium of *Trymalaspis pristina* Robinson, -7. F: Early holaspide cephalon of *Ptychagnostus hybridus* (Broeggen), -20. G-J are index taxa from Boulder 4, all -7. G and H: Cephalon and pygidium of *Hypagnostus parvifrus* (Linnarsson). I and J: Cephalon and pygidium of *Peronopsis fallax* (Linnarsson).

Variety of trilobites



Ordovician fossils

in limestone = calcium carbonate
= life stone



The first fossils on land-

What are they?

Plant or animal?

