

1 Genomic epidemiology and longitudinal sampling of ward 2 wastewater environments and patients reveals complexity 3 of the transmission dynamics of *bla*_{KPC}-carbapenemase- 4 producing Enterobacterales in a hospital setting

5

6 1.1 Author names

7 Stoesser N^{a, b, #, *}, George R^{c, *}, Aiken Z^c, Phan HTT^d, Lipworth S^a, Wyllie DH^e, Quan TP^a, Mathers AJ^f,
8 De Maio N^g, Seale AC^h, Eyre DW^{a, b}, Vaughan A^a, Swann J^a, Peto TEA^{a, i}, Crook DW^{a, b, i}, Cawthorne J^c,
9 Dodgson A^c, Walker AS^{a, b, i}, and the TRACE Investigators' Group

10

11 *Contributed equally; NS drafted/submitted the manuscript contributing to the author order.

12

13 1.2 Affiliation(s)

14 ^a Nuffield Department of Medicine, University of Oxford, Oxford, United Kingdom

15 ^b NIHR Health Protection Research Unit in Healthcare Associated Infections and Antimicrobial
16 Resistance at University of Oxford in partnership with Public Health England, Oxford, United
17 Kingdom

18 ^c Manchester University NHS Foundation Trust, Manchester, United Kingdom

19 ^d University of Southampton, Southampton, United Kingdom

20 ^e United Kingdom Health Security Agency, United Kingdom

21 ^f University of Virginia, Charlottesville, United States of America

22 ^g EMBL-European Bioinformatics Institute, Cambridge, United Kingdom

23 ^h University of Warwick, Coventry, United Kingdom

24 ⁱ NIHR Oxford Biomedical Research Centre, Oxford University Hospitals NHS Foundation Trust, John
25 Radcliffe Hospital, Oxford, United Kingdom

26

27 1.3 Corresponding author and email address

28 Nicole Stoesser

29 e-mail: nicole.stoesser@ndm.ox.ac.uk

30

31 **1.4 Keywords**

32 Carbapenemase-producing Enterobacterales, genomic epidemiology, bla_{KPC}, wastewater sites,
33 healthcare-associated

34 **1.5 Repositories:**

35 Sequence data have been deposited in NCBI's GenBank (BioProject accessions: PRJNA768622 and
36 PRJNA514245).

37 **2. Abstract**

38 Healthcare-associated wastewater reservoirs and asymptomatic gastrointestinal patient colonisation
39 by carbapenemase-producing Enterobacterales (CPE) contribute to nosocomial CPE dissemination.
40 We systematically sampled wastewater sites (n=4488 sampling events; 349 sites) and patients
41 (n=1247) across six wards over 6-12 months in 2016 to better understand bla_{KPC}-associated CPE
42 (KPC-E) diversity within these niches and transmission potential in an endemic healthcare setting. Up
43 to five isolates in KPC-E-positive samples were sequenced (Illumina). Recombination-adjusted
44 phylogenies were used to define genetically related strains; assembly and mapping-based typing
45 approaches were used to characterise antimicrobial resistance genes, insertion sequences, and
46 Tn4401 types/target site sequences. The wider accessory genome was evaluated in a subset of the
47 largest clusters, and those crossing niches.

48

49 Wastewater site KPC-E-positivity was substantial (101/349 sites [28.9%] positive); 228/5,601 (4.1%)
50 patients cultured were CPE culture-positive over the same timeframe. At a genomic-level, 13 KPC-E
51 species and 109 strains were identified, and 24% of wastewater and 26% of patient KPC-E-positive
52 samples harboured ≥1 strain. Most diversity was explained by the individual niche, suggesting
53 localised factors are important in selection and spread. Tn4401+target site sequence diversity was
54 greater in wastewater sites (p<0.001), which might favour Tn4401-associated
55 transposition/evolution. Shower/bath and sluice/mop-associated sites were more likely to be KPC-E-
56 positive (Adjusted Odds Ratio [95% CI]: 2.69 [1.44-5.01], p=0.0019 and 2.60 [1.04-6.52], p=0.0410,
57 respectively). Different strains had different transmission and bla_{KPC} dissemination dynamics.

58

59 There may be substantial KPC-E colonisation of wastewater sites and patients in KPC-E-endemic
60 healthcare settings. Niche-specific factors (e.g. microbial interactions, selection pressure) likely
61 affect carbapenemase gene persistence and evolution, and different strains and mobile genetic
62 elements with different transmission dynamics influence carbapenemase gene dissemination; these
63 factors should be considered in surveillance and control strategies.

64 3. Impact statement

65 Antibiotic resistance is a major healthcare problem, and common infection-causing bacteria known
66 as Enterobacterales have developed resistance to one of the “last-line” antibiotic classes used for
67 treatment, namely carbapenems. Carbapenem resistance in Enterobacterales is largely caused by
68 the presence of carbapenemase enzymes, such as “KPC” (*Klebsiella pneumoniae* carbapenemase),
69 which has caused outbreaks of antibiotic-resistant healthcare-associated infection in the USA and
70 UK. Many infection-associated Enterobacterales species can also live asymptotically in the human
71 gut and environmental niches, such as hospital wastewater sites, which act as potential reservoirs
72 for the exchange of the gene encoding for KPC (*bla*_{KPC}). Diversity within and transmission between
73 these reservoirs remains poorly characterised. We therefore systematically and densely sampled
74 humans and wastewater sites (e.g. sink/shower drains, toilets etc.) on six wards in 2016-2017 and
75 sequenced 1646 isolates in a prospective study in a hospital affected by outbreaks of KPC-
76 Enterobacterales-associated infections. We found that 1 in 20 patients and nearly a third of all
77 wastewater sites were colonised with KPC-Enterobacterales. Samples frequently contained multiple
78 different KPC-positive species or strains at any given time, and different transmission patterns were
79 evident. This study has major implications for surveillance of carbapenem-resistant Enterobacterales
80 in hospitals, and for designing strategies to mitigate their spread.

81 4. Data summary

82 The authors confirm all sequencing data and available metadata has been provided in NCBI
83 BioProjects PRJNA768622 and PRJNA514245 and in supplementary dataset 2.

84

85 5. Introduction

86 Carbapenemase-producing Enterobacterales (CPE) are a global health threat¹, and commonly
87 associated with multi-drug resistance, rendering treatment of CPE infections difficult. Major
88 transmissible global carbapenemases include the metallo-beta-lactamases (*bla*_{NDM}, *bla*_{VIM}, *bla*_{IMP}),
89 some oxacillinases (*bla*_{OXA-48/48-like} variants), and the *Klebsiella pneumoniae* carbapenemase (KPC,
90 encoded by *bla*_{KPC})². Intra- and inter-species horizontal transfer of these genes is facilitated by
91 mobile genetic elements such as transposons and plasmids, resulting in rapid dissemination of
92 carbapenem resistance^{3,4}.

93

94 CPE have been isolated from human and animal gastrointestinal tracts, and from sewage, rivers and
95 sink drains⁵⁻⁷. Recent studies have highlighted that hospital wastewater sites may act as a CPE
96 reservoir⁵, but the diversity within these niches, genetic overlap with patient isolates and likely
97 directionality and rates of transmission remain to be elucidated. Studies evaluating the contribution
98 of patient-to-patient transmission as the sole explanatory factor explaining transmission have
99 generally been unable to robustly explain the majority of transmission events, suggesting that
100 patient, staff and/or environmental reservoirs remain insufficiently sampled to account for the

101 diversity observed⁸. Few studies have considered within-niche diversity of strains by sampling
102 multiple isolates per individual and/or site⁹⁻¹¹.

103

104 The Manchester University NHS Foundation Trust (MFT; Manchester, UK), has experienced on-going
105 transmission and patient acquisition of multi-species CPE, predominantly bla_{KPC}-positive
106 Enterobacterales (KPC-E), since 2009. Following a bla_{KPC-2}-ST216-*Escherichia coli* outbreak on two
107 cardiac wards in the Manchester Royal Infirmary (MRI; part of MFT) and subsequent ward closure
108 and plumbing infrastructure replacement, early environmental sampling after the ward reopened
109 suggested rapid re-colonisation of wastewater sites with KPC-E, likely from transfers of colonised
110 patients to the ward and ongoing evolution of new KPC-E strains in the environment¹². We therefore
111 undertook a prospective study systematically sampling all wastewater sites on six wards for 6-12
112 months alongside patient rectal screening/clinical sampling, and used an anonymised electronic
113 database to characterise patient admission, ward movement, sampling profiles and culture results.
114 Multiple colonies were isolated from KPC-E-positive samples to define within-niche diversity, and
115 whole genome sequencing (Illumina) of individual isolates was used to characterise this diversity and
116 consider modes of evolution and transmission.

117

118 6. Methods

119 *Study setting and epidemiological data*

120 MFT is a large, regional referral centre in northwest England, UK, managing >10,000 patients/year. In
121 response to the regional emergence of KPC-E¹³, the Trust implemented an extensive Infection
122 Prevention and Control (IPC) programme, consistent with UK CPE guidelines (published in 2014)¹⁴.
123 Despite this, in April 2015 there was a large bla_{KPC}-*E. coli* outbreak in the cardiac unit¹², leading to its
124 closure (September 2015-January 2016) and complete refurbishment, including plumbing
125 replacement. Subsequently systematic, prospective wastewater site sampling was undertaken
126 (described further below).

127

128 To evaluate patient-level microbiological and admissions data, MFT electronic bacteriology records
129 were linked, based on NHS numbers, to patient administration data, and anonymised. For this study,
130 we analysed anonymised patient data from 1st January 2016-31st December 2016 inclusive, and
131 included only those patients with exposure to any one of six wards within the three study units
132 (acute medicine, cardiology, geratology) during that time.

133

134 *Environmental sampling and laboratory processing*

135 All sink/drain/wastewater sites on six wards in three units were sampled: the cardiac unit (wards 3
136 [W3] and 4 [W4]); the geratology unit (wards 45 [W45] and 46 [W46]); and the acute medicine unit

137 (wards AM1 and AM2) (Table S1 shows sampling site designations). All wastewater sites on both W3
138 and W4 were sampled fortnightly on rotation from 8th January 2016-28th December 2016. W45,
139 W46, AM1, AM2 wastewater sites were similarly sampled fortnightly, but from 18th July 2016-31st
140 December 2016. Wastewater site types are described in the Supplementary methods.

141

142 Environmental sampling was carried out by aspirating ~20mls of wastewater from sink P-traps,
143 shower drains or toilets and performing enrichment-based culture (see Supplementary methods).
144 Multiplex, real-time, quantitative PCR (for *bla*_{NDM}, *bla*_{KPC}, *bla*_{OXA-48}¹²) was performed on broths
145 following incubation. 10µl of any *bla*_{KPC}-positive-broth were streaked onto CPE-selective agar plates
146 (Chromid CARBA) and re-incubated (aerobically, 37°C).

147

148 *Patient sampling and laboratory processing*

149 Routinely collected patient clinical samples for the diagnosis of infection were processed using
150 standard operating procedures in line with UK Standards¹⁵. In addition, a rectal CRE screening
151 programme was in place from 2014 in line with national guidance: This included routine screening of
152 high-risk patients (i.e. previously CRE-positive and/or a history of hospitalization abroad or in UK
153 hospital with a known CRE problem in the last 12 months) on admission and weekly; screening of all
154 patients on wards where CRE-positive patients were identified (either colonised or infected cases);
155 ward closure and twice weekly screening if more than two cases were identified on a ward until no
156 new cases were identified; isolation and/or cohorting of CRE-positive patients. Rectal swabs were
157 screened for CPE using the Cepheid Xpert Carba-R assay or an in-house multiplex PCR (identifying
158 *bla*_{KPC}, *bla*_{NDM}, and *bla*_{OXA-48}). Species identification of isolates was performed by MALDI-ToF (Bruker
159 Biotyper, Bruker MD); antimicrobial susceptibility testing was performed as per EUCAST guidelines¹⁶.
160 Enterobacterales isolates that had resistant or intermediate susceptibility to any carbapenem were
161 classified as a carbapenem-resistant Enterobacterales (CRE).

162

163 *Analyses of within-niche diversity*

164 To evaluate within-niche diversity in the environment and patients, up to five different CRE colonies
165 were individually sub-cultured; *bla*_{KPC}-positivity in sub-cultures was re-confirmed by PCR and species
166 identification performed by MALDI-ToF prior to storage in nutrient broth at -80°C.

167

168 *DNA extraction and isolate sequencing*

169 DNA was extracted from frozen sub-culture stocks with the QuickGene kit, as per the manufacturer's
170 instructions, with an additional mechanical lysis step post-chemical lysis (6m/s at 40secs x2 FastPrep,
171 MPBio). Isolates were sequenced on the Illumina HiSeq 4000 generating 150bp paired-end reads.

172

173 *Sequence data processing and analysis*

174 Sequencing reads were initially processed using an in-house pipeline¹⁷ (details in Supplementary
175 methods); species identification was performed with Kraken2 (default settings)¹⁸. If at least 50
176 sequenced isolates were of a single species, reads were mapped to species-specific references.
177 Variant calling and filtering was performed, and consensus fasta sequences of variant calls with
178 respect to the reference generated. Recombination-adjusted phylogenies by species were created
179 from core chromosomal single nucleotide variants (SNVs; padded to the length of the reference
180 genome prior to analysis) using IQtree¹⁹ (flags: -m GTR+G -blmin 0.00000001 -t PARS) and then
181 ClonalFrameML²⁰ (default parameters). A distance of ≤ 400 SNVs was used as a threshold to define
182 clusters based on previous work (threshold used similar to²¹; distribution of SNV distances within
183 clusters displayed in Fig.S2A-E for the most common species identified); indels were not considered
184 in our evaluation of relatedness. For detailed sub-strain analysis for *K. pneumoniae* strain 9 (see
185 Results), sub-strains were defined on the basis of accessory genome clusters characterised using
186 Panaroo (default parameters including --clean-mode strict²²) and clustered using the R heatmap
187 package.

188

189 Isolates were assembled using SPAdes (v3.6; default parameters)²³. Multi-locus sequence types were
190 derived using BLASTn and species-specific databases (<https://pubmlst.org>; Achtman 7-gene MLST for
191 *E. coli*). AMR genes were identified using ARIBA²⁴ with the CARD database²⁵ and insertion sequences
192 using ISFinder (<https://isfinder.biotoul.fr>). *bla*_{KPC} genes, Tn4401 transposon contexts and the 5-bp
193 target site sequences (TSSs) on either side of the Tn4401 transposon reflecting Tn4401 transposition
194 signatures were characterised using TETyper²⁶, a Tn4401b reference sequence, a 5bp flank length
195 and the default structural/SNV profiles. Arbitrary profile numbers were assigned based on the
196 presence of unique profiles of AMR genes, plasmid replicons, IS sequences (see Supplementary
197 dataset 1 for details of which AMR gene variants constitute a given AMR gene profile, and
198 Supplementary dataset 2 for details on plasmid replicon and IS combinations identified).

199

200 For the analysis of *K. pneumoniae* strain 9 (see Results), putative transmission networks were
201 inferred first using SCOTTI²⁷ (Supplementary methods), and then heuristically, linking isolates
202 identified as clusters on the basis of accessory component profiles and geographic/temporal overlap
203 (Supplementary methods).

204

205 *Statistical analyses and data visualisation*

206 Descriptive statistics were calculated in R v3.6.2 or STATA v16.1. To conduct permutational analyses
207 of variance, we used the *adonis* function (vegan R package, v2.5-7)²⁸ on a matrix of pairwise Gower
208 distances based on genetic features (i.e. composite of species-strain type, plasmid replicon profile,

209 AMR gene profile, IS profile, and Tn4401+flanking TSS profiles), which was calculated using the *daisy*
210 function (R cluster package). To evaluate the impact of unit location or environmental site type on
211 the odds of CPE positivity, we used logistic regression with robust standard errors clustered by
212 environmental site sampled (R rms package, v6.2-0)²⁹. Data visualisation was using the ggplot2³⁰ and
213 scatterpie³¹ (v.0.1.5) R packages, and BioRender (www.biorender.com).

214

215 *Data availability*

216 Sequence data have been deposited in NCBI's GenBank (BioProject accession PRJNA768622 and
217 PRJNA514245; accession numbers and metadata for successfully sequenced isolates are in
218 Supplementary dataset 2). We are not able to share the complete database of patient tests, results
219 and admissions episodes; dates for patient admission/sampling are given as month-year only. Of
220 note, labels represented in the figures/supplementary data are anonymised study-specific labels
221 that are not patient-identifiable.

222

223 **7. Results**

224 *Environmental sampling revealed high prevalence and clustering of wastewater site KPC-E* 225 *colonisation*

226 349 sites across the six study wards (i.e. three units) were sampled a total of 4,488 times (Fig.1):
227 101/349 (28.9%) sites and 319/4,488 (7.1%) sampling events were KPC-E-positive, with no difference
228 by unit (Fig.2, $p=0.908$), or over time. Adjusting for environmental site type and unit location,
229 shower/bath drain sites and sluices/sluice sinks/mop sinks were significantly more likely to be
230 positive for KPC-E than others (Adjusted Odds Ratio [AOR] (95% CI): 2.69 (1.44-5.01), $p=0.0019$ and
231 2.60 (1.04-6.52), $p=0.041$, respectively), and toilet water sampling less likely to be positive (AOR
232 (95% CI): 0.28 (0.10-0.78), $p=0.015$); there was no evidence of a unit-dependent difference (Table 1).
233 7/349 (2.0%) sites were persistently KPC-E positive (≥ 10 consecutive KPC-E-positive sampling
234 events); interestingly five of these were medicines/treatment room handwash basin drains (of eight
235 medicines/treatment room sinks in total) likely only accessible to healthcare staff (Table S1, Fig.S3).

236

237 *Approximately one in twenty-five patients was affected by carbapenemase-producing*
238 *Enterobacterales (CPE), with most cases reflecting rectal colonisation with KPC-producing K.*
239 *pneumoniae, E. coli or E. cloacae*

240 Of 2,529 Enterobacterales positive-samples (2,622 Enterobacterales isolates, 1,247 patients),
241 439/2,529 (17.4%) samples cultured at least one carbapenem-resistant Enterobacterales (CRE,
242 $n=478$ isolates in total) (Figs.1, S4). For 344/439 (78.4%) CRE-positive samples on which
243 carbapenemase PCR data were also available, all contained at least one known carbapenemase
244 gene, of which 303/344 (88.0%) were bla_{KPC} (Table S2, CRE therefore henceforth denoted as CPE for

245 simplification). CPEs were cultured from 228 patients (4.1% of all patients cultured, 18.2% of all
246 patients with an Enterobacterales-positive culture) during the study period (median=1, IQR: 1-2,
247 range: 1-17 CPE isolates/patient).

248

249 The majority of CPE-positive isolates came from rectal screens (n=387/478 [81.0%]); others came
250 from non-screening clinical specimens (91/478 [19.0%]) (Table S3). Most CPE-positive patients
251 (178/228 [78%]) were CPE-positive only on rectal screen, but 23/228 (10%) individuals were positive
252 only on clinical culture, and 27 (12%) on both. By routine laboratory species identification methods,
253 >20 species and eight genera were represented amongst CPEs, with *K. pneumoniae*, *E. coli* and *E.*
254 *cloacae* complex predominating (434/478 [90.8%]). Notably, the proportions of carbapenem-
255 resistant isolates within these top three carbapenem resistance-associated species varied
256 (n=284/593 [48%] vs 106/1,404 [8%] vs 44/110 [40%] respectively; Fisher's exact test, p<0.001,
257 Fig.S4).

258

259 The proportion of patient CPE-positive cultures was lower than that of environmental site samples,
260 typically ~3% (Fig. 3, bottom panel). Occasional peaks in prevalence were observed, consistent with
261 outbreaks (e.g. week 31, acute medicine unit). CPE prevalence amongst patient cultures on the
262 refurbished cardiology unit was 0% (97.5% CI: 0-0.02) for the first 10 weeks post-reopening,
263 although two utility room sink drains on were positive for KPC-E a day after W3 reopened to patient
264 admissions (11th January 2016) following closure and complete plumbing replacement over three
265 months; thereafter the unit was rapidly re-colonised (Fig.2).

266

267 *Structuring of diversity by patient and environmental niche, with most diversity explained by the*
268 *individual niche*

269 1,646 CPE isolates were successfully sequenced (1,275 environmental, 371 patient isolates; Fig.1,
270 Supplementary dataset 2), of which all contained bla_{KPC-2} as the carbapenem resistance variant, and
271 13 bla_{KPC-2}-Enterobacterales species were identified across patients and environmental reservoirs.
272 Amongst five species with ≥50 sequenced isolates which were evaluated at the strain-level, 109
273 unique strains were represented. Of the 109 strains, 61 (56%) were found only in the environment,
274 27 (24%) only in patients and 21 (19%) in both patients and the environment (Fig.4 for the major
275 species); the median strain cluster size was 5 isolates (range: 1-122), and the median number of
276 unique niches (i.e. unique patients or wastewater sites) affected by a strain was 2 (range: 1-23).

277

278 Amongst sequenced isolates, 100 plasmid replicon profiles, 754 IS profiles, 939 AMR gene profiles,
279 and 70 Tn4401/TSS types were identified (Supplementary dataset 2). A much greater proportion of
280 all identified Tn4401/TSS types was observed in the environment versus patients (66/70 [94%] of
281 types versus 12/70 [17%] respectively; Fisher's exact test, p<0.001), and all the isolates with >1 set of

282 TSSs were seen in environmental sites, consistent with these representing a more favourable niche
283 for Tn4401-associated transposition/evolution and dissemination.

284

285 For colonised niches (i.e. patient or environmental), using a metric of genomic diversity based on
286 strain, plasmid replicon profile, AMR gene profile, IS profile, and Tn4401+5bp TSS profiles, most
287 variance was explained by the specific individual site sampled ($R^2=50.5\%$; $p<0.001$), versus small but
288 significant contributions made by niche type (i.e. patient vs environmental niche; $R^2=5.6\%$; $p<0.001$)
289 and unit location ($R^2=2.8\%$; $p<0.001$).

290

291 For the fifteen scenarios where exactly the same strain, AMR gene profile, IS profile, plasmid profile
292 and Tn4401/TSS type were seen in patient and environmental niches (Fig.S5), and considering only
293 the event-pairs where the chromosomal SNP distances were within 5 SNPs of each other and there
294 was a change in sampling site, the temporal relationship of these supported: patient-to-environment
295 transmission in 13/29 (45%) events, environment-to-patient transmission in 2/29 (7%) events,
296 environment-to-environment transmission in 1/29 (3%) events, and patient-to-patient transmission
297 in 13/29 (45%) events (test of equality of proportions, $p<0.001$).

298

299 *Environmental and patient niches harbour diverse KPC-E within single samples and over time*

300 Environmental sites showed evidence of major strain-level diversity: from the 101/349 sites from
301 which bla_{KPC-2}-Enterobacterales isolates were successfully sequenced at any timepoint, 78/319
302 (24.4%) KPC-E-positive samples had >1 bla_{KPC-2}-Enterobacterales strain, namely 52/319 (16.3%) with
303 two strains, 16/319 (5.0%) with three, 9/319 (2.8%) with four and 1/319 (0.3%) with five strains
304 (Figs.5, S6). Over the study period, colonised environmental sites had a median of 3 (range: 1-17,
305 IQR: 2-5) bla_{KPC-2}-Enterobacterales strains. 49/101 sites (49%) were apparently colonised by a single
306 bla_{KPC-2}-Enterobacterales strain only, of which 38 were at single sampling-points, and 11 sites positive
307 with the same strain at ≥ 2 timepoints.

308

309 For patient samples, based on routine laboratory microbiology, evidence of mixed-species KPC-E
310 colonisation/infection was found in 35/439 (8%) samples from 26/228 (11%) patients; these were
311 mostly *E. coli*/*K. pneumoniae* mixtures (n=17 samples; maximum two species identified). To evaluate
312 within-patient diversity with genomic rather than species-level resolution, in a subset of 76 patients,
313 strains were sequenced successfully from at least one CPE-positive sample during the study period;
314 for 97 samples, multiple colonies were picked from single sample sub-cultures. In total 457
315 sequenced colonies from 97 samples were available for evaluation of within-patient diversity; 25/97
316 samples (25.7%) had more than one strain per sample, namely 17/97 samples (17.5%) with two
317 bla_{KPC-2}-Enterobacterales strains, 6/97 (6.2%) with three strains and 2/97 (2.0%) with four strains

318 (Figs.5, S6) - i.e. considerably more diversity identified than based on routine laboratory species
319 identification data (26% vs 8% samples; Fisher's exact test, $p < 0.001$).

320

321 For a subset of 14 patients and 53 wastewater sites where within-sample diversity was evaluated by
322 sequencing multiple isolates from individual samples and ≥ 2 longitudinal samples were positive,
323 longitudinal switches in bla_{KPC-2} -Enterobacterales species-strain composition was common, occurring
324 in 7/14 (50%) of patients and 41/53 (77%) wastewater sites (Figs.5, S6).

325

326 *Genomic analysis reveals distinct population biology for different bla_{KPC-2} -Enterobacterales strains*

327 To investigate different modes of bla_{KPC-2} dissemination, we characterised in detail several
328 sequenced KPC-E strain clusters, including the largest environmental-only cluster (*E. cloacae* strain
329 10 [n=122 isolates]), a large cluster involving patients and the environment (*K. pneumoniae* strain 9
330 [n=106 isolates], and a cluster in which signatures of Tn4401 transposition appeared highly frequent
331 (*K. pneumoniae* strain 11 [n=96 isolates]).

332

333 *Scenario 1: Dynamic changes in AMR gene, IS, plasmid replicon and Tn4401 profiles in E. cloacae*
334 *strain 10 in sink drain sites*

335 *E. cloacae* strain 10 (eclo10, ST32) appeared a site-restricted but persistent coloniser of three co-
336 located sink drains on a geratology ward (in a drug room clinical handwash basin drain [F45], utility
337 sink drain [F46], and a separate treatment room clinical handwash basin drain [F47]) over ~5 months
338 (18/Jul/2016-20/Dec/2016). At the core chromosomal level, strains appeared largely structured by
339 site, with 7 SNVs separating the majority of isolates in F45 from those in F47, and 14 SNVs those in
340 F46 from F45. Three isolates in F47 and one isolate in F46 clustered with the F45-associated isolates;
341 sampling dates suggest that these represented transmission events from F45 (Fig.6A). There was
342 evidence of rapid churn in AMR gene and IS content (111 and 36 different profiles respectively;
343 Fig.6Bi and 6Bii) in the relatively stable strain background, and almost all isolates in F47 had acquired
344 an additional set of IncHI2/HI2A replicons on a background of FIB/FII, consistent with plasmid
345 gain/loss (Fig.6C). Although the Tn4401 type and flanking sequences were largely identical (Tn4401a-
346 ATTGA-ATTGA in 105/122 (86%) isolates across sinks), there was evidence of unique additional
347 Tn4401 deletions occurring in multiple isolates at several distinct timepoints in the three sink sites
348 (Fig.6).

349

350 *Scenario 2: Rapid clonal patient-patient transmission of K. pneumoniae strain 9*

351 *K. pneumoniae* strain 9 (kpne9, ST252) was highly related (Fig.S7; maximum 6 SNVs across strain, 68
352 isolates with 0 SNVs between them), and spread amongst 21 patients across three wards on two
353 units (acute medicine AM1 and AM2 and geratology W46), with a dense outbreak in Aug 2016, most

354 consistent, at least initially, with direct/indirect patient-patient transmission (Fig.7). *bla_{KPC}* was
355 consistently nested in Tn4401-ATTGA-ATTGA, except for one isolate which acquired a Tn4401-
356 associated mutation (isolate: 2216698_14, C4620T), and another in which the right target site
357 sequence (TSS) could not be identified (isolate: 2035791_11). Amongst the 106 isolates there was
358 evidence of four transient plasmid replicon acquisitions on a background of the stable presence of a
359 set of IncFIB/IncFII replicons (Fig.S7). Transmission probabilities inferred by SCOTTI were weak (see
360 Supplementary material; Fig.S8), as seen in other studies⁸, but using accessory cluster profiling to
361 further discriminate amongst strains suggested that there were several discrete transmission
362 clusters (Fig.S9), with some individuals involved in several of these (i.e. harbouring multiple distinct
363 sub-lineages simultaneously, Fig.7). A single shower drain site was involved (A13), which was likely a
364 seeded bystander from affected patients, but may have contributed to transmission of sub-strain 3g
365 (Fig.7).

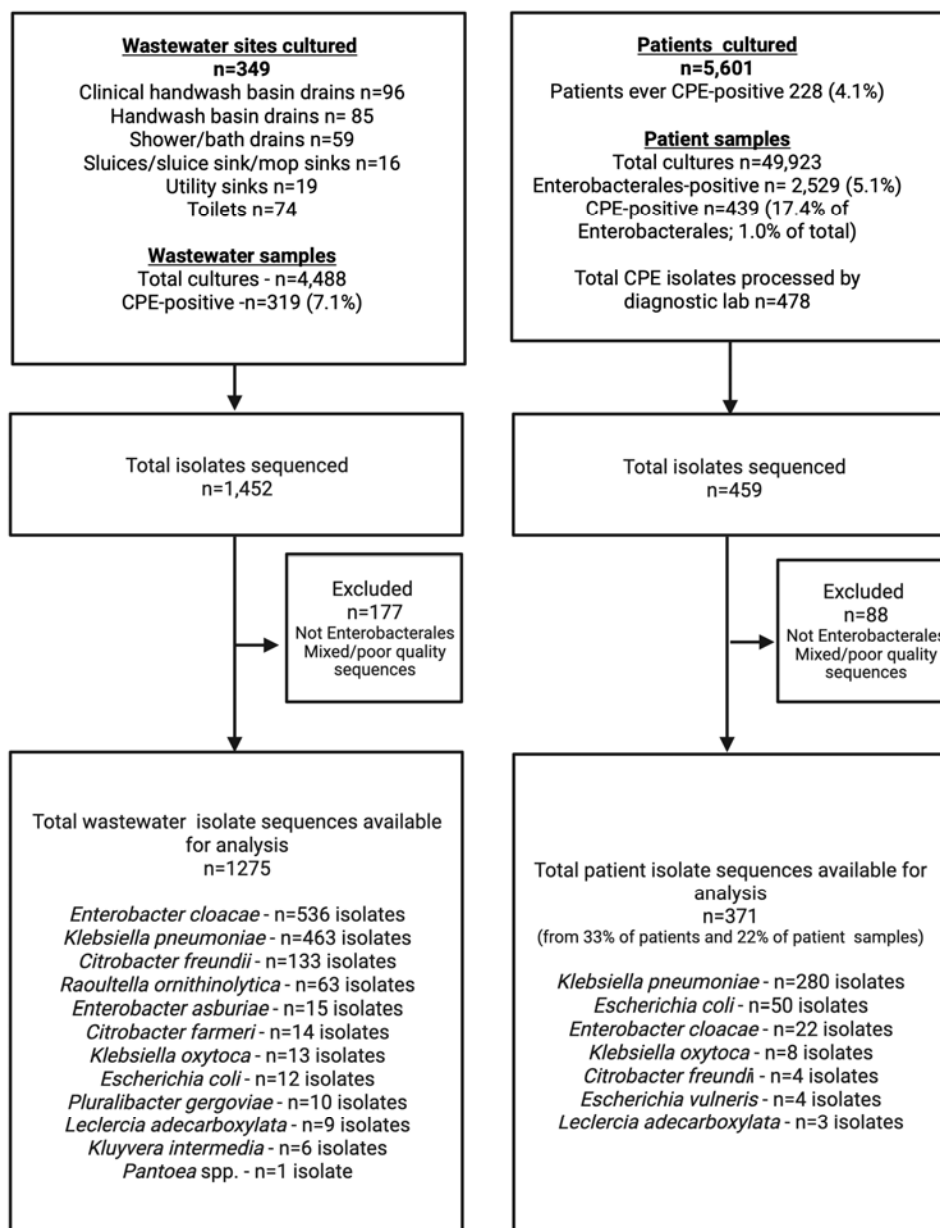
366

367 *Scenario 3: Cross-unit dissemination with evidence of significant Tn4401-associated bla_{KPC}*
368 *transposition in K. pneumoniae strain 11*

369 Given that Tn4401 transposition is associated with *bla_{KPC}* dissemination²¹, we also evaluated whether
370 the number of different Tn4401-TSS types was different across strains, noting that the observed
371 frequency of different Tn4401-TSS combinations was higher in *K. pneumoniae* strain 11 (kpne11,
372 ST11) than in other strains (Fig.S10). On further analysis, Kpne11 represented two sub-clusters,
373 separated by ~40SNVs (Fig.8, designated “cluster 1” and “cluster 2”; Fig.S11), both of which were
374 isolated from patients and wastewater sites across ward settings, including the cardiac unit after
375 plumbing replacement. Within both clusters of isolates there were ten different Tn4401a flanking
376 signatures observed, only one of which was seen in the other >1600 isolates sequenced in the study
377 (Tn4401a-1_ATTGA_ATTGA, the most common flanking signature observed overall), and therefore
378 most strongly consistent with the occurrence of an atypical and increased number of transposition
379 events within this *K. pneumoniae* strain. Although all isolates contained IncFIB and IncFII plasmid
380 replicons, evidence of plasmid gain/loss events as demonstrated by changes in plasmid replicon
381 profiles also appeared common (Fig.8 for cluster 1).

382 8. Figures and tables

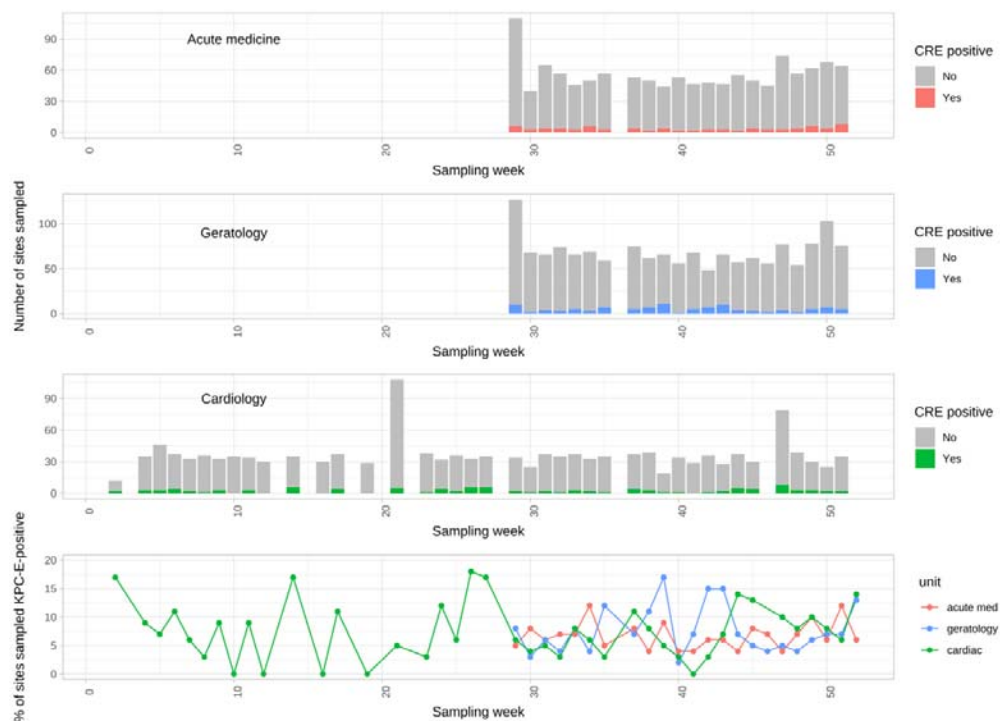
383 Figure 1. Sampling and sequencing flowchart for the study.



384

385 **Figure 2. bla_{KPC}-Enterobacterales (KPC-E)-positive environmental sites by week in 2016 and**
386 **hospital unit.** The number of environmental site samples performed and KPC-E-positive samples by
387 week of sampling, stratified by unit (top three panels), and the proportion of KPC-E-positive sites by
388 week of sampling, again stratified by unit (bottom panel).

389



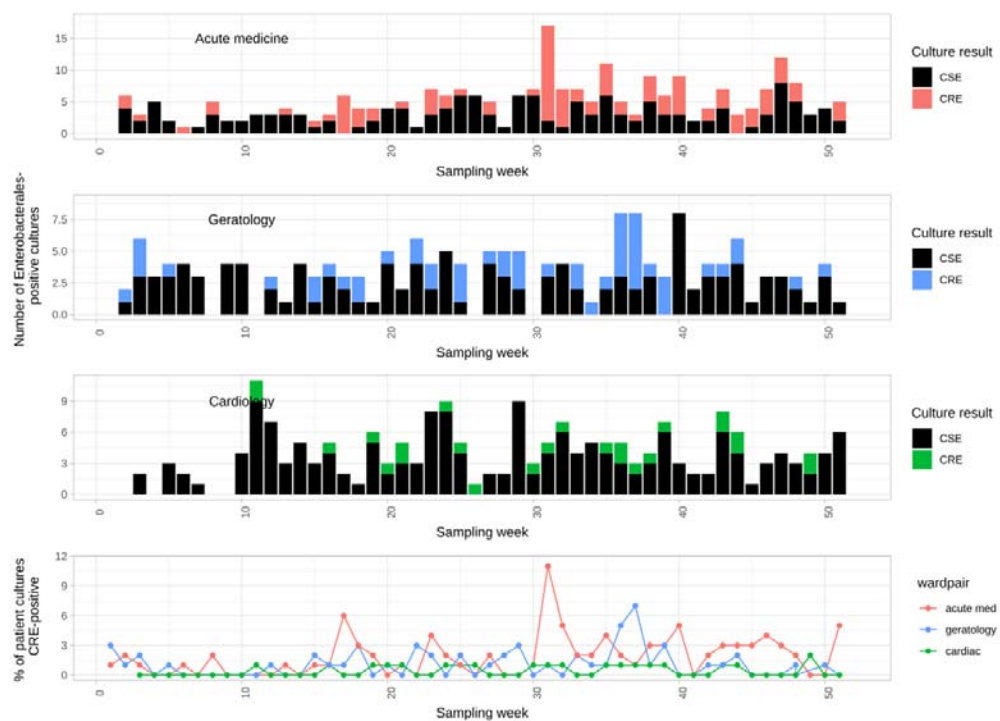
390

391

392 **Figure 3. Carbapenem-susceptible Enterobacterales (CSE) and carbapenem-resistant-**
393 **Enterobacterales (CRE) patient cultures by week in 2016 and hospital unit.** Top three panels show
394 counts of Enterobacterales culture-positive samples stratified by unit and carbapenem susceptibility;
395 bottom panel shows the proportion of all cultures taken that were CRE, again stratified by unit.

396

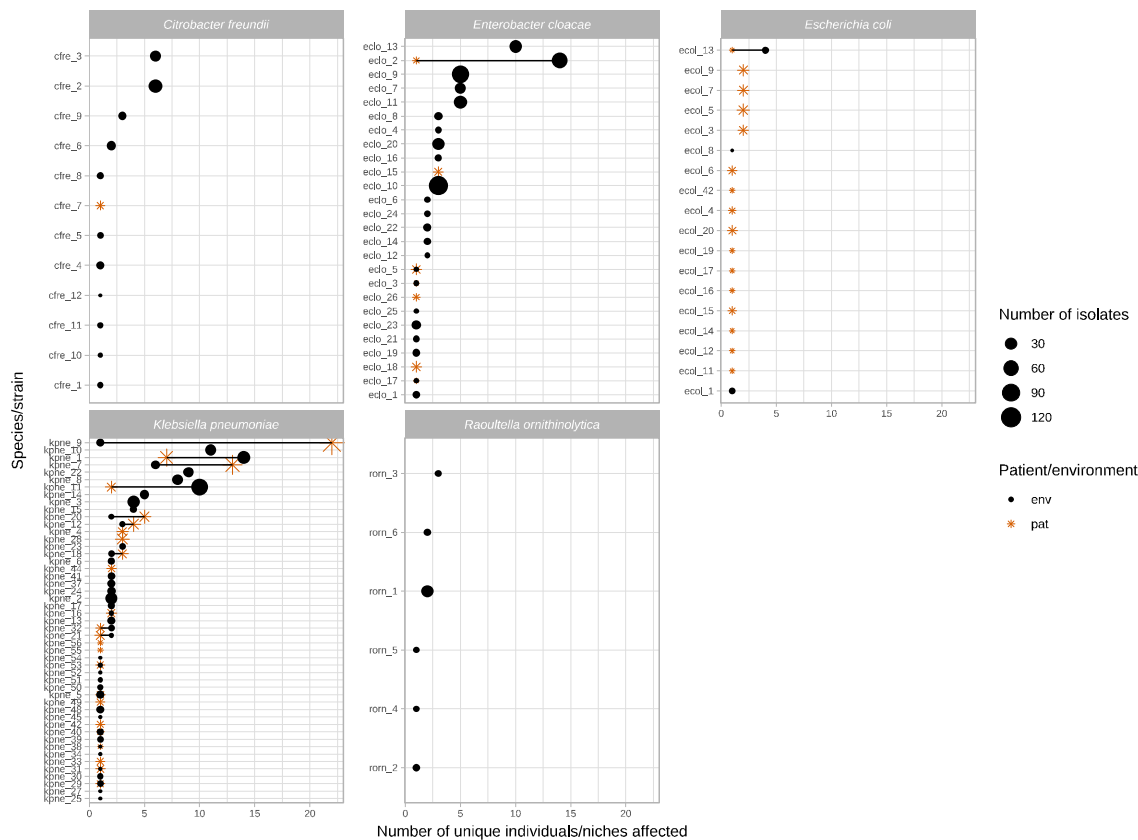
397



398

399 **Figure 4. Number of unique patient/environment niches colonised by common *bla*_{KPC-2}**
 400 **Enterobacterales species/strains and the total number of isolates for each cluster.** Includes
 401 species/strains if >50 isolates of a species were identified [see Methods]). Orange stars denote
 402 patient niches, black circles wastewater niches; larger shape size denotes a larger number of isolates
 403 sequenced. Strains observed in both niches are either overlapping shapes (same number of niches),
 404 or joined by a line (different numbers of niches).

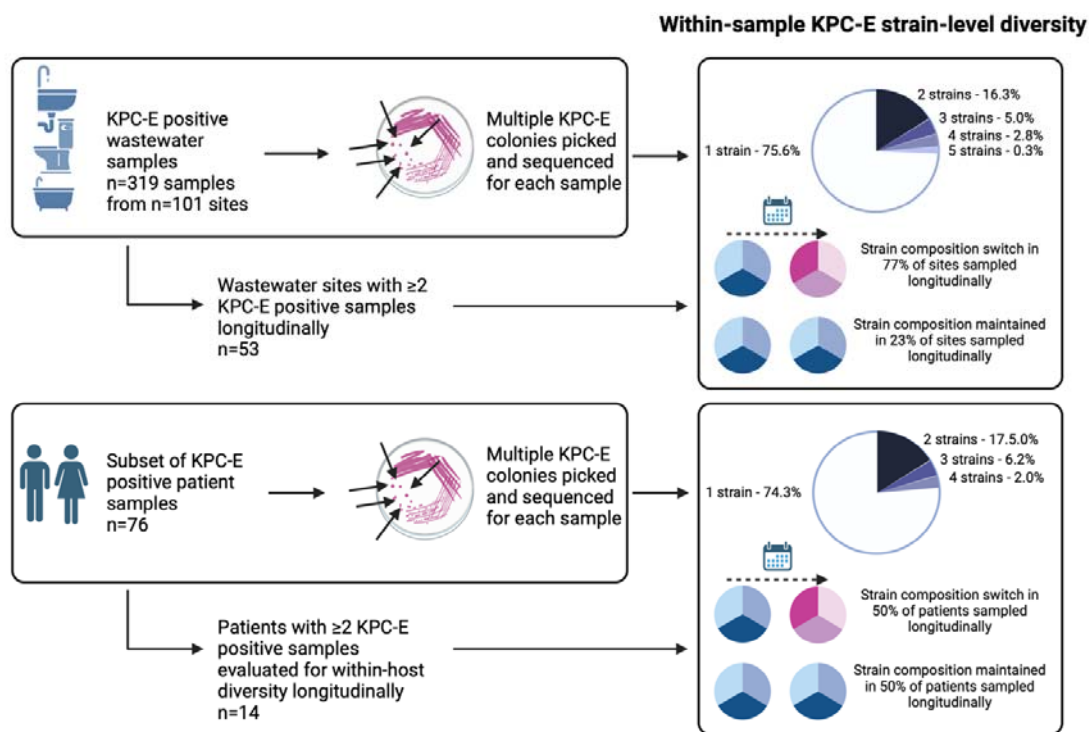
405



406

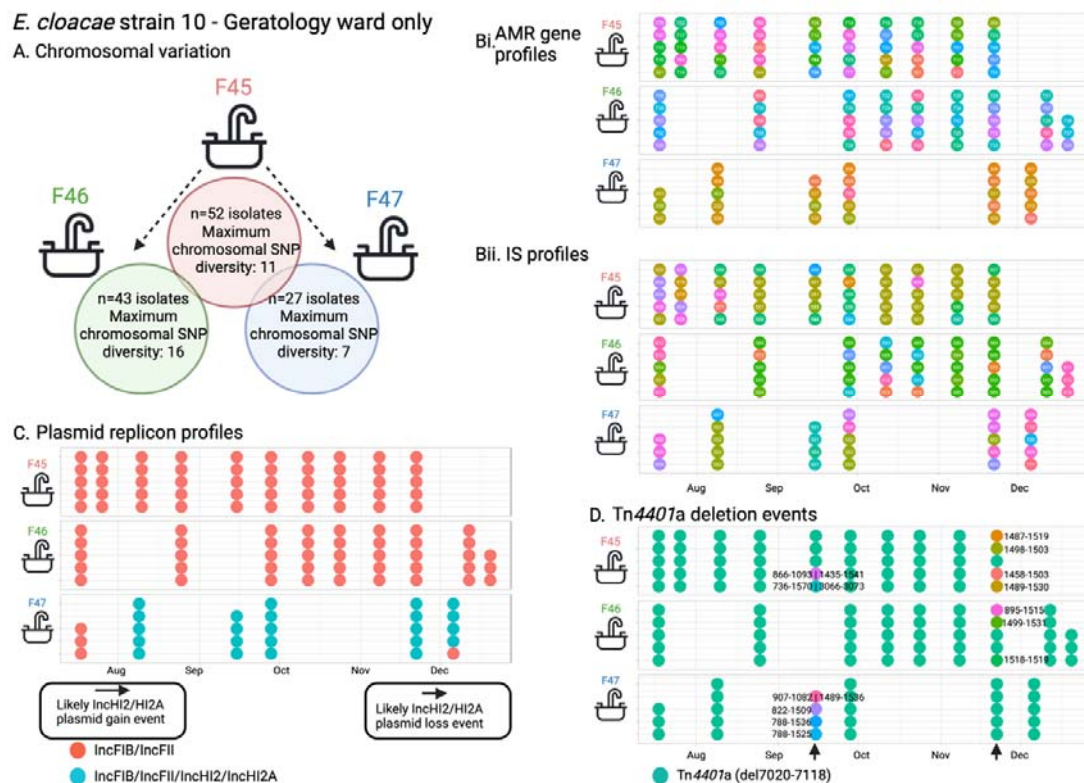
407 **Figure 5. Summary of within-niche and KPC-E sample diversity using genomics.**

408



409

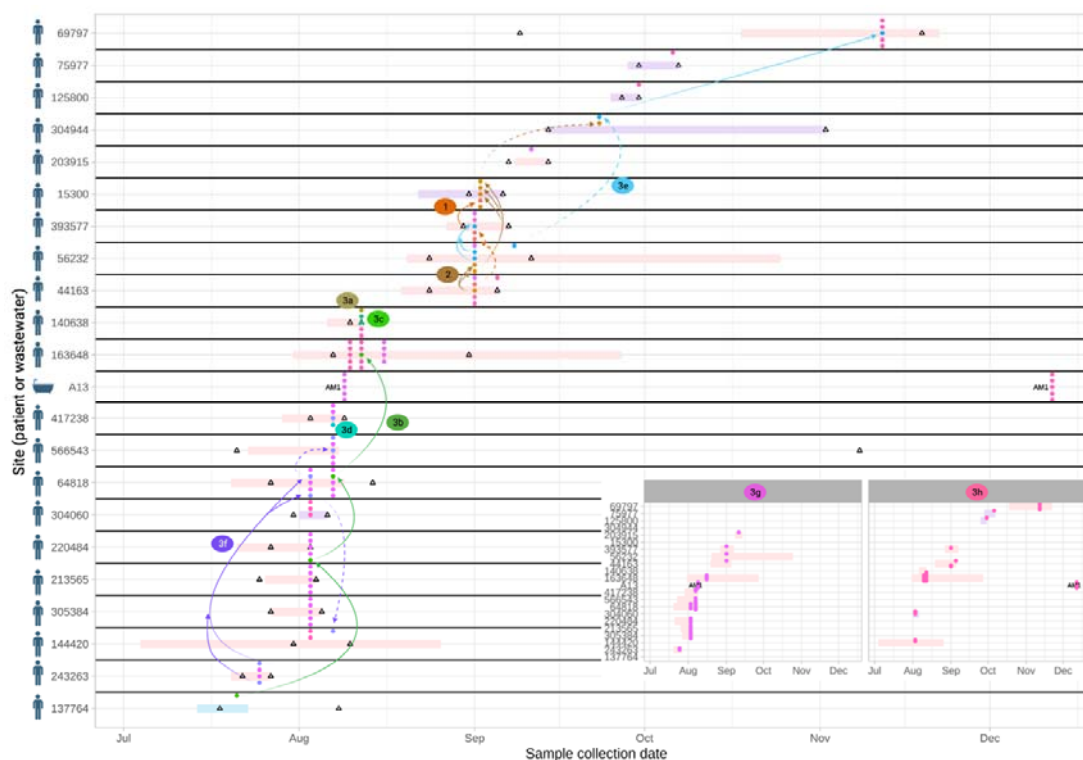
410 **Figure 6. *Enterobacter cloacae* strain 10 - features of population structure and transmission**
 411 **dynamics - niche restriction, persistence and genetic turnover.** Summaries of A) Chromosomal SNP
 412 distances for *E. cloacae* strain 10 across the three sites it colonised; Bi) AMR and Bii) IS profiles, C)
 413 plasmid replicon profiles, and D) deletions in Tn4401a in isolates with each sequenced isolate
 414 plotted as a dot reflecting within-sample diversity at given timepoints and longitudinally.
 415



416

417 **Figure 7. *Klebsiella pneumoniae* strain 9 - features of population structure and transmission**
418 **dynamics - rapid patient-patient transmission.** Putative transmission network for sub-lineages of *K.*
419 *pneumoniae* strain 9, defined by accessory genome clustering (clusters 1, 2, 3a-h). Horizontal bars
420 represent admission episodes to study wards for each patient (pale blue=W45, geratology; pale
421 pink=AM1, acute medicine; pale purple=AM2, acute medicine; A13 represents the only
422 environmental (shower) site involved). Empty black triangles denote CPE-negative rectal screens on
423 patients. Arrows denote possible transmission links (dashed arrows denote events that have no
424 geographic overlap or could be associated with two links based on negative screen, geographic
425 location and timing). For clarity, arrows are not drawn for clusters 3g and 3h, which affected the
426 most patients - these are shown in detail as an inset panel at the bottom right. In some cases
427 patients were colonised by other species-strains contemporaneously (not shown here).

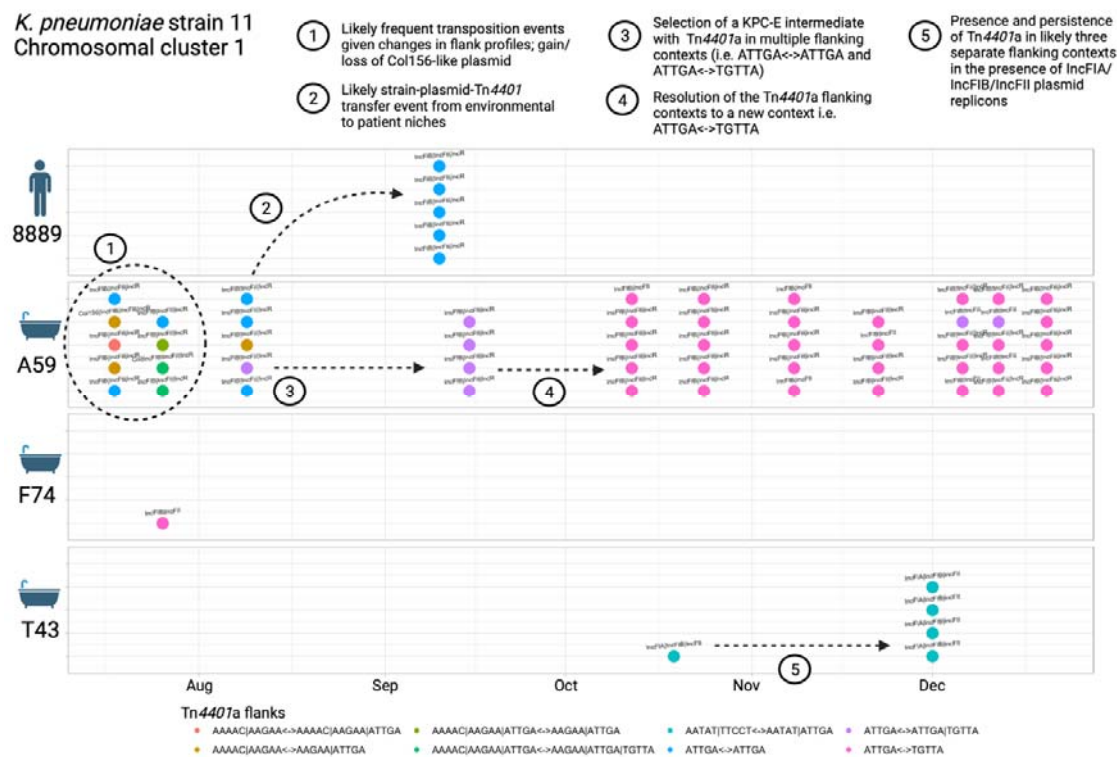
428



429

430

431 **Figure 8. *Klebsiella pneumoniae* strain 11 cluster - features of population structure and**
 432 **transmission dynamics – multiple Tn4401 transposition events.** Examples of possible
 433 transmission/genetic events are annotated on the figure. Each isolate sequenced is represented as a
 434 dot, with colour denoting the TSS profiles observed. Plasmid replicon profiles are annotated as text.
 435



436

437 **Table 1. Association of environmental site type and unit location with *bla*_{KPC}-Enterobacterales**
 438 **(KPC-E) positivity in environmental samples.** Outputs of a multivariable logistic regression model
 439 with robust standard errors clustered by environmental site type and unit location; no other
 440 variables were considered in the model. P-values <0.05 were considered significant and are
 441 highlighted in bold. No interactions with an interaction Wald p <0.05 were observed.

442

Environmental site	Number of sites	Number of sampling events KPC-E-positive (% of total sampling events)	Number of sampling events KPC-E-negative	OR (95% CI)	p
Environmental site type					
Clinical handwash basin drain	96	79 (5.9%)	1270	Reference	
Handwash basin drain	85	52 (4.6%)	1077	0.99 (0.51-1.93)	0.9735
Shower/bath drain	59	100 (19.2%)	421	2.69 (1.44-5.01)	0.0019
Sluice/sluice sink/mop sink	16	47 (17.9%)	215	2.60 (1.04-6.52)	0.0410
Toilet	74	5 (0.5%)	931	0.28 (0.10-0.78)	0.0152
Utility sink	19	36 (12.4%)	255	1.32 (0.47-3.68)	0.5965
Environmental site location					
Acute medicine unit	129	86 (6.6%)	1223	Reference	
Cardiac unit	76	111 (7.0%)	1453	1.07 (0.57-2.00)	0.8412
Geratology unit	144	122 (7.6%)	1493	0.88 (0.52-1.48)	0.6243

443 9. Discussion

444 This work highlights the substantial KPC-E diversity and flux that can occur in both human and
445 wastewater niches in healthcare settings over variable timeframes, in this case in relation to a large
446 bla_{KPC-2} -associated carbapenemase gene outbreak. KPC-E strains have features likely to make
447 generalising results regarding modes of transmission, evolution and gene sharing of bla_{KPC} amongst
448 these species very challenging. Although structuring at the strain-level was observed by niche and
449 species (Fig.4), likely transmissions occurred in a non-negligible manner in all directions from
450 patients to other patients and the environment, and from the environment to patients and other
451 environmental sites. Environmental niches and certain lineage contexts appeared to amplify bla_{KPC-2}
452 transposition events.

453

454 Although some environmental sites were persistently colonised with individual strains over months,
455 many appeared to be only transiently colonised. Sites particularly associated with KPC-E colonisation
456 included sluices, sluice sinks, mop sinks and shower/bath drains, supported by other studies⁵, and
457 consistent with these representing a major interface between human faeces and premise plumbing.
458 Toilets were less likely to be KPC-E-positive, perhaps because of regular flushing or particular
459 cleaning protocols; consistent with this, several studies have demonstrated that daily bleach
460 application decontaminated wastewater sites^{32, 33}.

461

462 Our study underscores the detailed and dense sampling effort required to understand within-sample
463 diversity and longitudinal flux, and highlights the difficulty in accurately tracking the dissemination of
464 AMR genes and strains across niches. This problem has also been demonstrated in other recent work
465 investigating bla_{OXA-48} , where only patient-based sampling was undertaken and most bla_{OXA-48} -
466 associated transmission events were non-delineated or only weakly supported by joint
467 phylogenetic/epidemiological inference⁸. Our study clearly shows that different species and lineages
468 represent different epidemiological risks and have their own behaviours, and a focus on single,
469 clonal strains as mediators of AMR gene transmission is irrelevant in this and potentially many other
470 settings where important AMR genes have become endemic.

471

472 The importance of evaluating asymptomatic carriage, characterising within-host diversity of strains,
473 considering rapid acquisition/loss of strains over short timeframes, and including environmental
474 sites in transmission networks has been partly demonstrated in previous studies investigating ESBL-
475 *E. coli*^{10, 34} and *Enterococcus* spp.³⁵, but generally these features are not jointly investigated because
476 doing so is highly resource-intensive, and there are no robust analysis methods for doing this to our
477 knowledge. However, without this effort, such as in studies which consider only single or infrequent
478 sampling timepoints, and do not investigate asymptomatic colonisation or consider within-site
479 diversity³⁶, our study highlights that relevant events may easily be missed.

480

481 There are several limitations to this work. CPE-sample capture for patients for this study was not
482 continuous, and we therefore only evaluated a subset of CPE-positive patients and samples using
483 genomics (33% and 22% respectively); we anticipate many transmission events were missed, but our
484 sampling already reveals the high complexity of *bla*_{KPC} transmission. We were not resourced to
485 perform long-read sequencing to enable plasmid sequence reconstruction, and plasmid replicon or
486 *bla*_{KPC}-contig profiling is relatively low-resolution and can be misleading²¹; we therefore avoided a
487 detailed plasmid analysis which would be important in quantifying horizontal *bla*_{KPC} transmission.
488 However, the diversity we observed in genetic contexts supporting *bla*_{KPC} was substantial, consistent
489 with high rates of HGT. A further limitation is the absence of metadata capturing relevant selection
490 pressures in each niche, including cleaning protocols for environmental reservoirs and drug
491 prescription/antimicrobial stewardship data for patients. We only investigated one healthcare
492 setting, but the same polyspecies, polyclonal phenomenon has been seen elsewhere and with other
493 carbapenemase genes^{4,8}. We focused only on Enterobacterales and may have missed wider HGT of
494 carbapenemase genes to other bacteria. In line with this, at least 23 *Pseudomonas* spp., five
495 *Stenotrophomonas maltophilia* and two *Acinetobacter* spp. that were PCR-positive for *bla*_{KPC} or
496 *bla*_{NDM} were inadvertently picked up on rectal screening. Our approaches to evaluating some of the
497 putative genetic changes and transmission events observed were heuristic and manual, partly
498 because the data were highly heterogeneous and complex. The study is now relatively historic, but
499 these types of polyspecies, polyclonal carbapenemase gene outbreaks associated with hospital
500 wastewater sites continue to be described and as such we believe the findings remain of interest.

501

502 Further optimisation of methods to evaluate multi-level genetic transmission and within-sample
503 diversity without individual colony-level characterisation is needed. Holistic approaches using fully
504 reconstructed chromosome/plasmid assemblies to quantify the diverse types of genomic
505 transmission (including clonal transmission, horizontal transfer at the gene, transposon and plasmid-
506 level) are also required to better understand what facilitates emergence, selection and persistence
507 of different lineages and genetic vectors of *bla*_{KPC}. This information will improve our understanding
508 of how to intervene to limit the transmission of drug-resistant Enterobacterales in healthcare
509 settings, and avoid incorrect inference.

510

511 **10. Author statements**

512 **10.1 Conflicts of interest**

513 DWE has received lecture fees from Gilead, outside the submitted work. The other authors declare
514 that there are no conflicts of interest.

515

516 **10.2 Funding information**

517 This study was funded by the National Institute for Health Research (NIHR) Health Protection
518 Research Unit in Healthcare Associated Infections and Antimicrobial Resistance (NIHR200915), a

519 partnership between the UK Health Security Agency (UKHSA) and the University of Oxford, and was
520 supported by the NIHR Oxford Biomedical Research Centre (BRC). The computational aspects of this
521 research were funded from the NIHR Oxford BRC with additional support from the Wellcome Trust
522 Core Award Grant Number 203141/Z/16/Z. The views expressed are those of the author(s) and not
523 necessarily those of the NHS, NIHR, UKHSA or the Department of Health and Social Care. For the
524 purpose of open access, the author has applied a Creative Commons Attribution (CC BY) licence to
525 any Author Accepted Manuscript version arising.

526

527 DWE is a Robertson Foundation Fellow and an NIHR Oxford Biomedical Research Centre Senior
528 Fellow. NS is an Oxford Martin Fellow. DWC, TEAP and ASW are NIHR Senior Investigators.

529

530 **10.3 Ethical approval**

531 This study was performed as part of a Trust board-approved and UK Health Security Agency
532 (formerly Public Health England) long-term outbreak response, and ethics approval was not required
533 under NHS governance arrangements; all analyses were undertaken using anonymised data. This
534 was reviewed and agreed by the Joint Research Office of the Oxford University Hospitals NHS
535 Foundation Trust and the University of Oxford (who oversee research governance, ethics and
536 assurance for our institution), and who deemed that neither sponsorship nor research ethics review
537 was required.

538

539 **10.4 Acknowledgements**

540 We are grateful to the microbiology staff and infection prevention and control teams at Manchester
541 University NHS Foundation Trust.

542

543 The Transmission of Carbapenemase-producing Enterobacteriaceae (TRACE) Investigators' Group is
544 made up of the following (listed alphabetically, includes several of the authors also listed by name in
545 the main author list): Zoie Aiken, Oluwafemi Akinremi, Aiysha Ali, Julie Cawthorne, Paul Cleary,
546 Derrick W. Crook, Valerie Decraene, Andrew Dodgson, Michel Doumith, Matthew J. Ellington, Ryan
547 George, John Grimshaw, Malcolm Guiver, Robert Hill, Katie L. Hopkins, Rachel Jones, Cheryl Lenney,
548 Amy J. Mathers, Ashley McEwan, Ginny Moore, Andrew Mumford, Mark Neilson, Sarah Neilson, Tim
549 E.A. Peto, Hang T.T. Phan, Mark Regan, Anna C. Seale, Nicole Stoesser, Jay Turner-Gardner, Vicky
550 Watts, A. Sarah Walker, Jimmy Walker, David H. Wyllie, William Welfare and Neil Woodford.

551

552 11. References

- 553 1. Munoz-Price LS, Poirel L, Bonomo RA et al. Clinical epidemiology of the global expansion of
554 *Klebsiella pneumoniae* carbapenemases. *Lancet Infect Dis* 2013; **13**: 785-96.
- 555 2. Logan LK, Weinstein RA. The Epidemiology of Carbapenem-Resistant Enterobacteriaceae:
556 The Impact and Evolution of a Global Menace. *J Infect Dis* 2017; **215**: S28-S36.
- 557 3. Nordmann P, Dortet L, Poirel L. Carbapenem resistance in Enterobacteriaceae: here is the
558 storm! *Trends Mol Med* 2012; **18**: 263-72.
- 559 4. Mathers AJ, Cox HL, Kitchel B et al. Molecular dissection of an outbreak of carbapenem-
560 resistant enterobacteriaceae reveals Intergenous KPC carbapenemase transmission through a
561 promiscuous plasmid. *MBio* 2011; **2**: e00204-11.
- 562 5. Kizny Gordon AE, Mathers AJ, Cheong EY et al. Is the hospital water environment a reservoir
563 for carbapenem-resistant organisms causing hospital-acquired infections? A systematic review of the
564 literature. *Clin Infect Dis* 2017.
- 565 6. Bleichenbacher S, Stevens MJA, Zurfluh K et al. Environmental dissemination of
566 carbapenemase-producing Enterobacteriaceae in rivers in Switzerland. *Environ Pollut* 2020; **265**.
- 567 7. Cahill N, O'Connor L, Mahon B et al. Hospital effluent: A reservoir for carbapenemase-
568 producing Enterobacteriales? *The Science of the total environment* 2019; **672**: 618-24.
- 569 8. León-Sampedro R, DelaFuente J, Díaz-Agero C et al. Pervasive transmission of a carbapenem
570 resistance plasmid in the gut microbiota of hospitalized patients. *Nat Microbiol* 2021; **6**: 606-16.
- 571 9. Weingarten RA, Johnson RC, Conlan S et al. Genomic Analysis of Hospital Plumbing Reveals
572 Diverse Reservoir of Bacterial Plasmids Conferring Carbapenem Resistance. *MBio* 2018; **9**.
- 573 10. Stoesser N, Sheppard AE, Moore CE et al. Extensive Within-Host Diversity in Fecally Carried
574 Extended-Spectrum-Beta-Lactamase-Producing *Escherichia coli* Isolates: Implications for
575 Transmission Analyses. *J Clin Microbiol* 2015; **53**: 2122-31.
- 576 11. Ludden C, Coll F, Gouliouris T et al. Defining nosocomial transmission of *Escherichia coli* and
577 antimicrobial resistance genes: a genomic surveillance study. *The Lancet Microbe* 2021; **2**: e472-e80.
- 578 12. Decraene V, Phan HTT, George R et al. A Large, Refractory Nosocomial Outbreak of *Klebsiella*
579 *pneumoniae* Carbapenemase-Producing *Escherichia coli* Demonstrates Carbapenemase Gene
580 Outbreaks Involving Sink Sites Require Novel Approaches to Infection Control. *Antimicrob Agents*
581 *Chemother* 2018; **62**.
- 582 13. England PH. Carbapenemase-producing Enterobacteriaceae: laboratory confirmed cases,
583 2003 to 2015. London: Public Health England, 2016.
- 584 14. England PH. Carbapenemase-producing Enterobacteriaceae: early detection, management
585 and control toolkit for acute trusts. 2014.

- 586 15. Investigations USfM.
- 587 16. Testing ECoAS. Breakpoint tables for interpretation of MICs and zone diameters. 2017.
- 588 17. Stoesser N, Sheppard AE, Peirano G et al. Genomic epidemiology of global *Klebsiella*
589 *pneumoniae* carbapenemase (KPC)-producing *Escherichia coli*. *Sci Rep* 2017; **7**: 5917.
- 590 18. Wood DE, Salzberg SL. Kraken: ultrafast metagenomic sequence classification using exact
591 alignments. *Genome Biol* 2014; **15**: R46.
- 592 19. Nguyen LT, Schmidt HA, von Haeseler A et al. IQ-TREE: a fast and effective stochastic
593 algorithm for estimating maximum-likelihood phylogenies. *Mol Biol Evol* 2015; **32**: 268-74.
- 594 20. Didelot X, Wilson DJ. ClonalFrameML: efficient inference of recombination in whole bacterial
595 genomes. *PLoS Comput Biol* 2015; **11**: e1004041.
- 596 21. Sheppard AE, Stoesser N, Wilson DJ et al. Nested Russian Doll-Like Genetic Mobility Drives
597 Rapid Dissemination of the Carbapenem Resistance Gene blaKPC. *Antimicrob Agents Chemother*
598 2016; **60**: 3767-78.
- 599 22. Tonkin-Hill G, MacAlasdair N, Ruis C et al. Producing polished prokaryotic pangenomes with
600 the Panaroo pipeline. *Genome Biol* 2020; **21**: 180.
- 601 23. Bankevich A, Nurk S, Antipov D et al. SPAdes: a new genome assembly algorithm and its
602 applications to single-cell sequencing. *J Comput Biol* 2012; **19**: 455-77.
- 603 24. Hunt M, Mather AE, Sánchez-Busó L et al. ARIBA: rapid antimicrobial resistance genotyping
604 directly from sequencing reads. *Microb Genom* 2017; **3**: e000131.
- 605 25. Jia B, Raphenya AR, Alcock B et al. CARD 2017: expansion and model-centric curation of the
606 comprehensive antibiotic resistance database. *Nucleic Acids Res* 2017; **45**: D566-D73.
- 607 26. Sheppard AE, Stoesser N, German-Mesner I et al. TETyper: a bioinformatic pipeline for
608 classifying variation and genetic contexts of transposable elements from short-read whole-genome
609 sequencing data. *Microb Genom* 2018; **4**.
- 610 27. De Maio N, Wu CH, Wilson DJ. SCOTTI: Efficient Reconstruction of Transmission within
611 Outbreaks with the Structured Coalescent. *PLoS Comput Biol* 2016; **12**: e1005130.
- 612 28. Oksanen JB, F.G.; Friendly, M.; Kindt, R.; Legendre, P.;, McGlinn DM, P.R.; O'Hara, R.B.;
613 Simpson, G.L.; Solymos, P.; Henry, M.; Stevens, H.,; Szoecs E.; Wagner H. *vegan: Community Ecology*
614 *Package*. 2020.
- 615 29. Harrell Jr FE. *rms: Regression Modeling Strategies*. 2021.
- 616 30. Wickham H. *ggplot2: Elegant Graphics for Data Analysis*. 2016.
- 617 31. Yu G. *scatterpie: Scatter Pie Plot*. 2020.

- 618 32. Valentin AS, Santos SD, Goube F et al. A prospective multicentre surveillance study to
619 investigate the risk associated with contaminated sinks in the intensive care unit. *Clin Microbiol*
620 *Infect* 2021; **27**: 1347.e9-.e14.
- 621 33. Heireman L, Hamerlinck H, Vandendriessche S et al. Toilet drain water as a potential source
622 of hospital room-to-room transmission of carbapenemase-producing *Klebsiella pneumoniae*. *The*
623 *Journal of hospital infection* 2020; **106**: 232-9.
- 624 34. Kantele A, Kuenzli E, Dunn SJ et al. Dynamics of intestinal multidrug-resistant bacteria
625 colonisation contracted by visitors to a high-endemic setting: a prospective, daily, real-time sampling
626 study. *The Lancet Microbe* 2021; **2**: e151-e8.
- 627 35. Gouliouris T, Coll F, Ludden C et al. Quantifying acquisition and transmission of *Enterococcus*
628 *faecium* using genomic surveillance. *Nat Microbiol* 2021; **6**: 103-11.
- 629 36. Qiao F, Wei L, Feng Y et al. Handwashing Sink Contamination and Carbapenem-resistant
630 *Klebsiella* Infection in the Intensive Care Unit: A Prospective Multicenter Study. *Clin Infect Dis* 2020;
631 **71**: S379-s85.
- 632