

Full Title: Deviation from Personalized Blood Pressure Targets Correlates with Worse Outcome after Successful Recanalization

Cover Title: Deviation From Personalized BP After EVT

Zhe Zhang, M.D.^{1,2}, Yuehua Pu, M.D.¹, Lei Yu, M.D.^{1,3}, Haiwei Bai, M.D.^{1,4}, Wanying Duan, M.D.¹, Xin Liu, M.D.¹, Jingyi Liu, M.D.¹, Lina Zheng, M.D., Ph.D.^{1,5}, Xiao Hu, Ph.D.², Xinyi Leng, M.D., Ph.D.⁵, Yuesong Pan, Ph.D.⁶, Nils H. Petersen, M.D.⁷, Liping Liu, M.D., Ph.D.^{1,6}

1 Neurocritical care unit, Department of Neurology, Beijing Tiantan Hospital, Capital Medical University, Beijing, China, 100070

2 Center for Data Science, Nell Hodgson Woodruff School of Nursing, Emory University, Atlanta, GA, 30322

3 Department of Neurology, Beijing Anzhen Hospital, Capital Medical University, Beijing, China, 100029

4 Department of Neurology, The Forth Hospital of Hebei Medical University, Shijiazhuang, China, 050011

5 Division of Neurology, Department of Medicine & Therapeutics, Chinese University of Hong Kong, Prince of Wales Hospital, Shatin, Hong Kong, 999077

6 China National Clinical Research Center for Neurological Diseases, Beijing Tiantan Hospital, Beijing, China, 100070

7 Department of Neurology, Divisions of Neurocritical Care and Stroke, Yale Medical School, New Haven, CT, 06510

Corresponding author: Liping Liu

Address: 119 W South Fourth Ring Rd, Beijing, China, 100070

Email: lipingsister@gmail.com

Total number of figures: 5

Total number of tables: 6

Key words: blood pressure; ischemic stroke; cerebral autoregulation; endovascular thrombectomy; individualized treatment.

Deviation from Personalized Blood Pressure Targets Correlates with Worse Outcome after Successful Recanalization

Abstract

Background

Personalized blood pressure (BP) management for acute ischemic stroke patients after successful recanalization lacks evidence. Our study aimed to investigate whether the deviation of BP from cerebral autoregulation (CA) limits, either in duration or burden, is associated with worse outcomes.

Methods

We prospectively enrolled patients with acute large anterior circulation artery occlusive stroke who had achieved successful recanalization (mTICI 2b-3). CA was determined by measuring mean velocity index (Mx) using transcranial Doppler sonography (TCD). We calculated the percent time and the burden (defined as the time-BP area) with BP outside the CA limits of each subject within 48 hours after recanalization. The outcomes included unfavorable functional outcome (mRS scored 3-6) at 90 days, early neurological deterioration (END), infarct volume growth at 7 days, and symptomatic intracranial hemorrhage (sICH) within 48 hours.

Results

A total of 91 patients were enrolled. Entire failure of autoregulation was found in 31.9% (29 / 91) of patients. The burden with BP outside the CA limits was associated with poor functional outcome at 90 days (aOR per 100 h·mmHg 1.29 [95% CI, 1.05 – 1.59] $P=0.018$). Both the percent time and the burden with BP out of the CA limits was correlated with END (aOR per 10% time 1.38 [95% CI, 1.05 – 1.83] $P=0.022$, aOR per 100h·mmHg 1.22 [95% CI, 1.01 – 1.48] $P=0.039$). The burden of BP that decreased below the CA lower limit was associated with infarct volume growth (adjusted β per 100 h·mmHg 5.47 [95% CI, 0.13 – 10.80] $P=0.045$). The percent time that BP exceeded the CA upper limit was associated with sICH (aOR per 10% time 1.45 [95% CI, 1.01 – 2.07] $P=0.043$).

Conclusions

Both the percent time and burden of BP that deviates from the autoregulation-preserved range correlate with worse outcomes after successful recanalization. Further randomized control trials are warranted to examine the effectiveness of autoregulation-guided BP targets.

Keywords: blood pressure; ischemic stroke; cerebral autoregulation; endovascular thrombectomy; individualized treatment.

Deviation from Personalized Blood Pressure Targets Correlates with Worse Outcome after Successful Recanalization

Endovascular thrombectomy (EVT) improves the prognosis of patients with ischemic stroke due to large-vessel intracranial occlusion with broadened time window [1–4]. However, after successful recanalization, the optimal blood pressure (BP) target is still unknown as several randomized trials (BP-TARGET, ENCHANTED2/MT, BEST-II) obtained neutral or even harmful results [5, 6]. Given the high variability in infarct size, location, and risk factors of stroke, a neurophysiological monitoring-based individualized BP management strategy might be an alternative option. Cerebral autoregulation (CA) refers to the capability of cerebral arteries to maintain cerebral blood flow constant within a range of systemic BP changes. It is reasonable to determine an acceptable BP range using CA evaluation in a variety of clinical settings such as traumatic brain injury and intraoperative monitoring [7]. Using near infrared spectroscopy (NIRS), Petersen *et al.* found that the percent time that BP exceeded the upper limits of CA, instead of a fixed target, was associated with unfavorable outcomes in patients who had undergone EVT [8]. Nevertheless, it is unclear whether the degree, in addition to the *duration*, of BP that deviates from CA limits (either above the upper limit or below the lower limit of autoregulation) after successful recanalization, affects outcomes.

In this study, we aimed to test the hypothesis that the *burden* of deviated BP within the first 48 hours after EVT was associated with unfavorable outcomes. The *burden* of deviated BP is defined as the area enclosed by the actual mean arterial pressure (MAP) curve and the upper and/or lower CA-impairment BP thresholds, to reflect the magnitude of BP deviation. Moreover, instead of NIRS that detects only a partial region around middle cerebral artery (MCA) - anterior cerebral artery (ACA) watershed, we used transcranial Doppler sonography (TCD) to assess the autoregulation of MCA which accounts for two-thirds of the cerebral blood supply.

Materials and Methods

Study design and subjects

This was a single-center, prospective, observational study. We screened patients who had undergone EVT with acute large artery occlusive stroke from a prospective cohort (*Registry for Critical Care of Acute Stroke in China*, registered in www.chictr.org.cn, identifier ChiCTR1900022154). Patients with large vascular occlusive (LVO) stroke in anterior circulation who had undergone EVT and achieved successful recanalization (modified treatment in cerebral infarction [mTICI] score 2b – 3), aging 18 – 85 years, and premorbid mRS score 0 – 2, were eligible to enroll. We excluded subjects with known any type of hemorrhagic transformation before CA monitoring, isolated ACA territory infarction, infarcts within vertebrobasilar artery territory, aorta dissection, severe internal medical comorbidities (including congestive heart failure, malignant arrhythmia, hepatic failure, and malignant tumors), enrolled in other clinical trials, subclavian artery stenosis, poor acoustic temporal window or cooperation to perform the CA monitoring. The management decisions, including the BP target, followed the current 2018 AHA/ASA and China Stroke Association guidelines [9, 10]. The Ethics Committee of Beijing Tiantan Hospital approved the study (KY2020-140-01). Written informed consent was obtained from the legally authorized representatives of all the subjects.

Procedures

Upper arm cuff BP measurement as routine care was performed at least every 2 hours for the first 48 hours after EVT. MAP (= [systolic BP – diastolic BP] / 3 + diastolic BP) of each individual was recorded. Within 48 hours after EVT, TCD-based CA monitoring was performed to identify the upper and lower limits of BP with autoregulatory function preserved (**Fig. 1A**). TIME_{above-range} and TIME_{below-range} were the percentage of cumulative time that the MAP respectively exceeded the upper limits and went below the lower limits in the first 48 hours. BURDEN_{above-range} and BURDEN_{below-range} were the area enclosed by the MAP curve above the upper limits, that below the lower CA limits and the corresponding time, respectively. TIME_{out-of-range} and BURDEN_{out-of-range} were the sum of the cumulative time and the area where MAP was out of the range, respectively (**Fig. 1B**). For patients with vasoparalysis (definition see below), BURDEN_{out-of-range} was the area between the MAP curve and the optimal MAP (MAP_{OPT}) in 48 hours (**Fig. S1B**).

Demographic and clinical data, including the National Institute Stroke Scale (NIHSS) score at admission to the hospital and the 7 days (or at discharge from the neurocritical care unit if less than 7 days), mRS scores at

90 ± 7 days were collected by investigators independent of the CA monitoring. We created Δ NIHSS (=NIHSS scores at 7 days – NIHSS scores at admission) to represent early neurological function changes.

All patients underwent CT angiography and perfusion imaging, or MRI scanning, at baseline and 24 to 48 hours after EVT procedure. A plain CT was performed at 7 days and at any time needed. Estimated by RAPID software (iSchemaView, California of USA), infarct core volume at baseline was the area with an apparent diffusion coefficient threshold of less than $620 \times 10^{-6} \text{ mm}^2/\text{s}$ on a diffusion-weighted MRI map, or a region with reduced cerebral blood flow less than 30% of that in normal tissue on a CT perfusion scan. A single rater, blind to clinical and CA data, reviewed CT performed 7 days after EVT and manually determined the infarct size. Infarct growth was the difference between the infarct volume at 7 days and the baseline. Based on the ECASS scale [11], hemorrhagic transformation was stratified into three groups: no hemorrhagic transformation (no HT), hemorrhagic infarction (HI), and parenchymal hematoma (PH). The definition of systemic intracranial hemorrhage (sICH) followed the Heidelberg Bleeding Classification [12].

TCD-based CA monitoring

Subjects underwent TCD monitoring (DWL, Compumedics DWL, Germany) of the bilateral middle cerebral artery (MCA) once or twice within the first 48 hours after EVT. After patients were lying in bed quietly, we placed two 2.5-MHz transducers fitted on a headband over the temporal window. The depth of insonation varied between 50 and 65mm to identify MCA blood flow. MCA flow velocity and arterial BP signals were recorded synchronously for 2 to 4.5 hours. CA was measured by mean velocity index (Mx) using ICM+ software (Cambridge University, UK) [13].

In computing Mx, the two signals were first filtered by a ten-second nonoverlapping average filter. Second, the Mx was computed as a continuous, moving Pearson's correlation coefficient between thirty consecutive time-averaged MAP values and corresponding MCA blood flow velocity. In this way, each Mx was monitored in a 300-second window. Mx approaches 1 if MCA blood flow passively follows the change of MAP, suggesting CA dysfunction. In contrast, Mx approaches 0 or is negative when CA capacity is preserved. We applied Mx = +0.4 as a cut-point for impaired CA [14]. MAP values were divided into groups of 5 mmHg and plotted against corresponding Mx indices. Then a characteristic U-shaped curve could be drawn. MAP declined below the LLA or exceeded the ULA when Mx increased to the threshold ≥ 0.4 (**Fig. 1A**). The nadir of the U-shaped curve was the MAP_{OPT} .

In this study, *vasoparalysis* was a situation where the U-shaped curve entirely exceeded the threshold of Mx = +0.4, indicating that vessels in MCA territory completely lost autoregulatory capacity (**Fig. S1A**).

Outcomes and hypothesis

The primary outcome was an unfavorable functional independence level (modified Rankin Scale [mRS] scored 3 – 6) at 90 days. The secondary outcomes were early neurological deterioration (END, the NIHSS score at 7 days increased at least 2 scores compared to baseline) [15], Δ NIHSS, infarct volume growth at 7 days compared to baseline, sICH within 48 hours after recanalization, and mRS score at 90 days.

Our hypothesis were as follows: a) the longer $\text{TIME}_{\text{out-of-range}}$ and the larger $\text{BURDEN}_{\text{out-of-range}}$ are associated with an increased risk of END, greater disability at 90 day (mRS score 3 – 6), and a higher Δ NIHSS value, b) the longer $\text{TIME}_{\text{above-range}}$ and the larger $\text{BURDEN}_{\text{above-range}}$ are associated with a higher risk of sICH within 48 hours, c) the longer $\text{TIME}_{\text{below-range}}$ and the larger $\text{BURDEN}_{\text{below-range}}$ are associated with greater infarct volume growth measured at 7 days.

To investigate whether vasoparalysis affects the outcomes, we perform a subgroup analysis by dividing the subjects into vasoparalysis and non-vasoparalysis groups and examining the hypothesis above.

Statistical methods

Statistical analyses were performed using StataMP 17.0 (Stata Corporation, Texas). Data were reported as mean ± standard deviation (SD) if they obeyed normal distribution or median (interquartile range [IQR]) if not. We used the Wilcoxon rank-sum test, χ^2 test, *t*-test, Fisher's exact test for comparing two unadjusted samples, Kruskal-Wallis test for more than two independent samples. We applied the Spearman correlation coefficient to examine the correlation between the two groups. Odds ratios (ORs) of dichotomous variables, and correlation coefficients (β) for continuous variables were estimated using a logistic and linear regression model, respectively. ORs and β values were adjusted for age, admission NIHSS score, time from symptom onset to reperfusion, admission MAP and the Alberta Stroke Program Early CT score (ASPECTS). *P* values < 0.05 were considered statistically significant.

Results

Subject characteristics

Between May 5, 2020, and Feb 21, 2022, a total of 200 patients were screened, and 120 TCD-based CA monitoring sessions were performed among the 91 enrolled subjects (**Fig. S2**). The CA monitoring began at 21.7 (*IQR* 14.1 – 35.4) hours after recanalization, with 3.2 ± 1.1 hours of artifact-free recording. The average number of BP measurements was 36.6 ± 8.2 , with average MAP 97 ± 10 mmHg. The median of $\text{TIME}_{\text{out-of-range}}$ and $\text{BURDEN}_{\text{out-of-range}}$ was 75.9% (*IQR* 40.4% - 99.1%) and 295.0 (*IQR* 133.5 - 488.1) h • mmHg, respectively. All the subjects successfully completed follow-up. More detailed characteristics are summarized in **Table 1**.

Outcomes

The median of ΔNIHSS was -3 (*IQR* -8 – 0). ΔNIHSS was associated with $\text{TIME}_{\text{out-of-range}}$ and $\text{BURDEN}_{\text{out-of-range}}$ ($P=0.010$, 0.016 , respectively) (**Fig. 2 A, B**). Linear regression model demonstrated a correlation between $\text{BURDEN}_{\text{out-of-range}}$ and ΔNIHSS (adjusted β per 100h • mmHg 0.51 [95% CI, 0.07 – 0.96] $P=0.024$) (**Table 3**). Sixteen (17.6%) subjects had END. Patients with END had longer $\text{TIME}_{\text{out-of-range}}$ (96.8% [*IQR* 84.5% – 100%] versus 67.3% [*IQR* 34.1% – 97.3%] $P=0.005$) and larger $\text{BURDEN}_{\text{out-of-range}}$ (447.6 [*IQR* 313.0 – 511.3] h•mmHg versus 247.9 [*IQR* 88.3 – 470.4] h•mmHg $P=0.012$). In multivariate Logistic regression model analysis, both $\text{TIME}_{\text{out-of-range}}$ and $\text{BURDEN}_{\text{out-of-range}}$ were noted as independent risk factors of END (aOR per 10% time 1.38 [95% CI, 1.05 – 1.83] $P=0.022$, aOR per 100h • mmHg 1.22 [95% CI, 1.01 – 1.48] $P=0.039$) (**Table 2**).

The median volume of infarct growth at 7 days was 20 (*IQR* 2-60) mL. The $\text{BURDEN}_{\text{below-range}}$ was associated with infarct volume growth ($P=0.039$). The correlation between $\text{TIME}_{\text{below-range}}$ and infarct progress at 7 days was trended in a similar direction but was not statistically significant ($P=0.058$) (**Fig. 2 C, D**). Linear regression model demonstrated that only the $\text{BURDEN}_{\text{below-range}}$ was associated with infarct growth (a β per 100 h•mmHg 5.47 [95% CI, 0.13 – 10.80] $P=0.045$), whereas the correlation between $\text{TIME}_{\text{below-range}}$ and infarct progress was not statistically significant (**Table 3**).

Thirty-five (38.5%) subjects had hemorrhagic transformation with various types (**Table 1**), and six of them were symptomatic. Patients with sICH had a higher $\text{TIME}_{\text{above-range}}$ and $\text{BURDEN}_{\text{above-range}}$ but with marginal significance (41.7% [*IQR* 20.7% – 75.7%] versus 11.6% [*IQR* 0 – 39.8%] $P=0.051$, 183.8 [*IQR* 38.3 – 450.9]h • mmHg versus 19.7 [*IQR* 0 – 165.0] h • mmHg $P=0.049$, respectively) (**Fig. 2 E, F**). In the adjusted analysis, only $\text{TIME}_{\text{above-range}}$ was associated with sICH (aOR per 10% time 1.45 [95% CI, 1.01 – 2.07] $P=0.043$) (**Table 2**).

Fifty-six (61.5%) subjects developed unfavorable functional outcome (mRS scored 3-6) at 90 days. Both $\text{TIME}_{\text{out-of-range}}$ and $\text{BURDEN}_{\text{out-of-range}}$ were higher in those with poor outcome (84.5% [*IQR* 56.5% – 100%] versus 62.3% [*IQR* 17.4% – 86.7%] $P=0.012$, 358.0 [*IQR* 193.9 – 541.1] h • mmHg versus 212.8 [*IQR* 29.7 – 358.5] h • mmHg $P=0.003$, respectively). In multivariate analysis, $\text{BURDEN}_{\text{out-of-range}}$ was associated with mRS score (a β per 100 h • mmHg 0.17 [95% CI 0.06 – 0.29] $P=0.004$), as well as poor functional outcome (aOR per 100 h • mmHg 1.29 [95% CI, 1.05 – 1.59] $P=0.018$) (**Fig. 3 A, B, Table 2 and 3**).

Vasoparalysis

Vasoparalysis was found in 31.9% (29 out of 91) subjects and accounted for 28.3% (34 out of 120) of the total TCD-based CA monitoring. Patients with vasoparalysis had higher ASPECTS scores than those without (median 9 [*IQR* 8 – 9] versus 7 [*IQR* 6 – 8], $P<0.001$). The differences in admission NIHSS scores and duration between reperfusion to monitoring were insignificant (**Supplementary Table 1**).

On the subgroup analysis, none of the TIME or BURDEN had statistically significant effect or correlation with the outcomes, although a marginal effect was found in $\text{BURDEN}_{\text{out-of-range}}$ among non-vasoparalysis subjects on END (aOR per 100 h • mmHg 1.45 [95% CI 0.99 – 2.11] $P=0.054$), and a marginal association was noticed in $\text{BURDEN}_{\text{out-of-range}}$ among those who had vasoparalysis with 90-day mRS score (a β per 100h•mmHg 0.20 [95% CI -0.01 – 0.42] $P=0.059$) (**Supplementary Table 2 and 3**).

Discussion

This study demonstrated that deviation of BP from a personalized, autoregulation-based target (either exceeding or decreasing below) after LVO stroke with successful recanalization was associated with an increased risk of infarct progression and hemorrhagic transformation, which further affected acute and long-term functional outcomes. This BP target can be identified by TCD-based CA monitoring after the thrombectomy procedure. If

blood pressure exceeds the upper limit or falls below the lower limit, it can cause hyper- or hypoperfusion. As TCD is widely used in inpatient care for stroke, our study suggests the potential benefits of personalized BP management with generalizability.

According to the randomized trials on mechanical revascularization, nearly half of patients who had undergone EVT had unfavorable outcomes [1]. Observational studies denoted that both high and low BP values at the acute stage were associated with increased early and late mortality [16]. To date, there are three randomized controlled trials (BP-TARGET, ENCHANTED2/MT, and BEST-II) to assess whether BP lowering treatment post successful recanalization could improve the prognosis. Intensive control of systolic BP to fixed targets <130mmHg or < 120mmHg failed to increase the odds toward favorable outcome (mRS score 0-2) at 90 days [5], or even demonstrated harm [6]. As previously stated, having a single, fixed target for blood pressure may not be appropriate for all patients due to differences in their history of hypertension and collateral circulation, which affects their cerebral perfusion needs. In addition to stratified ranges, other characteristics of BP, such as variability and trajectory, have attracted attention. Higher BP variability after successful recanalization was associated with worse long-term outcomes, especially in those with poor collateral compensation [17, 18]. Patients with high, moderate-to-high, and high-to-moderate systolic BP trajectories were more likely to have unfavorable outcomes [19]. We found that every 100 h·mmHg increase in the magnitude (described as the *burden* in this research) that BP deviated from CA limits had a 1.29-fold increase in the odds of a poor functional outcome at 90 days. Our result provides a possible explanation for the findings above. The changes or fluctuation in BP may lead to an increase in the burden of BP outside the CA-preserved range, which further causes poor long-term outcomes.

We found that both the time and the burden with BP out of CA range were associated with END. Further analysis suggested that this association might be owing to infarct volume growth and sICH, which were possibly caused by increased BURDEN_{below-range} and TIME_{above-range}, respectively. The burden below the lower CA limit was noticed to be related to infarct volume growth, suggesting that compared to the time, the magnitude of the BP reduction contributed more to worsening the cerebral perfusion less than 17 – 18ml/(100g · min), resulting in permanent ischemia [20]. As systemic BP drops below the lower limits of CA, deterioration in cerebral hypoperfusion would reduce microemboli clearance, and lead to infarct progression after successful recanalization [21, 22]. Thus, pressor therapy in progressive acute ischemic stroke might be warranted if the BP is below the lower limit of autoregulation.

In contrast, the relationship between sICH and BP above the upper limit was time-dependent. Upadhyaya *et al.* found in post-EVT patients ($n=103$), lower systolic BP (<130mmHg) was not associated with decreased risk of sICH, although as many as 69% of patients had shown evidence of blood-brain barrier (BBB) disruption [23]. Nevertheless, research based on larger cohorts and meta-analysis unlocked the connection between the sICH and higher systolic BP [24–26]. Apart from cerebral hemodynamic factors, mechanisms including post-ischemia inflammation also contribute to the pathogenesis of hemorrhagic transformation by altering BBB permeability [27]. Our findings and the literature suggested that the elevation in hydrostatic pressure driven by systemic BP might not simply follow a linear relationship with the amount or composition of efflux through BBB.

Our study first reported that after successful recanalization, cerebral vessels could be so severely injured that there was no such BP interval in which autoregulation was preserved. In this circumstance, cerebral blood flow is always pressure-passive. We use the old-fashioned but appropriate term *vasoparalysis* to describe this entire failure of autoregulation. We found that patients with vasoparalysis had higher ASPECTS scores before EVT, suggesting that the large infarct size may be responsible [28]. Accumulated acidic metabolites and adenosine in infarct tissue could dilate cerebral arterioles [29, 30], causing cerebral autoregulation failure. Meanwhile, the monitoring sessions which detected vasoparalysis were not closer to recanalization in time than those detected no vasoparalysis. This demonstrates that vasoparalysis may not recover quickly, at least in the short postoperative period (48 hours). In patients with vasoparalysis, BP management turns more difficult because of the increased risk of both hemorrhage and infarct progress. A possible solution to this dilemma is to bring BP as close to MAP_{OPT} as possible to minimize the BURDEN_{out-of-range}, since marginal (though statistically insignificant) correlation was revealed between BURDEN_{out-of-range} and 90-day mRS score in vasoparalysis subgroup (**supplementary Table 3**).

A key difference between ours and Petersen *et al.*'s work [8] is the CA evaluation methods. As mentioned above, NIRS might have difficulties in reflecting the whole-brain autoregulation by attaching probes on the forehead (around the MCA-ACA watershed) to measure changes in regional brain tissue oxygenation. Besides

its wide accessibility, the advantage of TCD which used in this study is the capability to evaluate the autoregulatory function responsible for up to two-thirds of the cerebral hemisphere. Because ischemic stroke is usually not a general but rather focal brain disease, expansion in the detectable area makes it more sensitive to identify impaired autoregulation. This explains why we discovered vasoparalysis in nearly one-third of the subjects, and the $\text{TIME}_{\text{out-of-range}}$ was much higher compared to Petersen *et al.*'s measurements (~35%).

Our study has several limitations. First, TCD, as a measure of CA, requires good temporal window and cooperation from patients. The prospect of extended duration monitoring raises theoretical concerns regarding potential mechanical compromise to cerebral structures and cerebrovasculature [31]. These shortcomings make continuous monitoring impossible. Second, low frequency, “spot” measurements of BP and CA made TIME and BURDEN calculation relatively inaccurate. Third, for the baseline NIHSS score, we used the one at admission rather than post-procedural or at the time of enrollment, making it unable to reflect the improvement from successful EVT. This situation arose because a substantial number of patients had received general anesthesia and/or intubation, resulting in challenges when conducting precise neurological assessments. Fourth, the study featured a moderate sample size, and while it yielded significant results for its primary and secondary outcomes, the subgroup analysis focused on vasoparalysis did not achieve statistical significance.

Conclusions

Our results show that after successful recanalization, the percent time and burden of BP outside the autoregulation-preserved range respectively correlate with short-term and long-term clinical outcomes. Infarct progress is associated with the magnitude of BP below the lower CA limit, whereas the relationship between sICH and BP above the upper limit is time-dependent. It is suggested that not only percent time, but also burden of BP out of CA-preserved range should be minimized. Further prospective, randomized control trials are warranted to examine the effectiveness of autoregulation-guided BP management strategy.

Acknowledgement

We thank engineers from Beijing Beike Digital Medical Technology Co., Ltd. for technical support and all the clinical and nursing staff in the Neurocritical Care Unit of Beijing Tiantan Hospital for assistance in this study.

Fundings

This study is sponsored by the National Natural Science Funds (81870913), National Key Research and Development Program for the Thirteenth Five-year Plan of the Ministry of Science and Technology (2016YFC1307301-DR), and China Scholarship Council (202008110069).

Disclosures: none.

References

1. Goyal M, Menon BK, van Zwam WH, Dippel DWJ, Mitchell PJ, Demchuk AM, et al. Endovascular thrombectomy after large-vessel ischaemic stroke: A meta-analysis of individual patient data from five randomised trials. *The Lancet*. 2016;387:1723–31. doi:10.1016/S0140-6736(16)00163-X.
2. Albers GW, Marks MP, Kemp S, Christensen S, Tsai JP, Ortega-Gutierrez S, et al. Thrombectomy for Stroke at 6 to 16 Hours with Selection by Perfusion Imaging. *N Engl J Med*. 2018;378:708–18. doi:10.1056/NEJMoa1713973.
3. Nogueira RG, Jadhav AP, Haussen DC, Bonafe A, Budzik RF, Bhuva P, et al. Thrombectomy 6 to 24 Hours after Stroke with a Mismatch between Deficit and Infarct. *N Engl J Med*. 2018;378:11–21. doi:10.1056/NEJMoa1706442.
4. Thomalla G, Simonsen CZ, Boutitie F, Andersen G, Berthezene Y, Cheng B, et al. MRI-Guided Thrombolysis

- for Stroke with Unknown Time of Onset. *N Engl J Med*. 2018;379:611–22. doi:10.1056/NEJMoa1804355.
5. Mazighi M, Richard S, Lapergue B, Sibon I, Gory B, Berge J, et al. Safety and efficacy of intensive blood pressure lowering after successful endovascular therapy in acute ischaemic stroke (BP-TARGET): A multicentre, open-label, randomised controlled trial. *The Lancet Neurology*. 2021;20:265–74. doi:10.1016/S1474-4422(20)30483-X.
 6. Yang P, Song L, Zhang Y, Zhang X, Chen X, Li Y, et al. Intensive blood pressure control after endovascular thrombectomy for acute ischaemic stroke (ENCHANTED2/MT): A multicentre, open-label, blinded-endpoint, randomised controlled trial. *Lancet*. 2022;400:1585–96. doi:10.1016/S0140-6736(22)01882-7.
 7. Czosnyka M, Hutchinson P, Smielewski P. Treatment targets based on autoregulation parameters in neurocritical care patients. *Current Opinion in Critical Care*. 2020;1. doi:10.1097/MCC.0000000000000704.
 8. Petersen NH, Silverman A, Strander SM, Kodali S, Wang A, Sansing LH, et al. Fixed Compared With Autoregulation-Oriented Blood Pressure Thresholds After Mechanical Thrombectomy for Ischemic Stroke. *Stroke*. 2020;51:914–21. doi:10.1161/STROKEAHA.119.026596.
 9. Powers WJ, Rabinstein AA, Ackerson T, Adeoye OM, Bambakidis NC, Becker K, et al. 2018 Guidelines for the Early Management of Patients With Acute Ischemic Stroke: A Guideline for Healthcare Professionals From the American Heart Association/American Stroke Association. *Stroke*. 2018;49:e46-e110. doi:10.1161/STR.0000000000000158.
 10. Liu L, Chen W, Zhou H, Duan W, Li S, Huo X, et al. Chinese Stroke Association guidelines for clinical management of cerebrovascular disorders: Executive summary and 2019 update of clinical management of ischaemic cerebrovascular diseases. *Stroke Vasc Neurol*. 2020;5:159–76. doi:10.1136/svn-2020-000378.
 11. Fiorelli M, Bastianello S, Kummer R von, del Zoppo GJ, Larrue V, Lesaffre E, et al. Hemorrhagic Transformation Within 36 Hours of a Cerebral Infarct. *Stroke*. 1999;30:2280–4. doi:10.1161/01.str.30.11.2280.
 12. Kummer R von, Broderick JP, Campbell BCV, Demchuk A, Goyal M, Hill MD, et al. The Heidelberg Bleeding Classification: Classification of Bleeding Events After Ischemic Stroke and Reperfusion Therapy. *Stroke*. 2015;46:2981–6. doi:10.1161/STROKEAHA.115.010049.
 13. Hori D, Nomura Y, Ono M, Joshi B, Mandal K, Cameron D, et al. Optimal blood pressure during cardiopulmonary bypass defined by cerebral autoregulation monitoring. *J Thorac Cardiovasc Surg*. 2017;154:1590-1598.e2. doi:10.1016/j.jtcvs.2017.04.091.
 14. Blaine Easley R, Kibler KK, Brady KM, Joshi B, Ono M, Brown C, Hogue CW. Continuous cerebrovascular reactivity monitoring and autoregulation monitoring identify similar lower limits of autoregulation in patients undergoing cardiopulmonary bypass. *Neurol Res*. 2013;35:344–54. doi:10.1179/1743132812Y.0000000145.
 15. Kwan J, Hand P. Early neurological deterioration in acute stroke: Clinical characteristics and impact on outcome. *QJM*. 2006;99:625–33. doi:10.1093/qjmed/hcl082.
 16. Vemmos KN, Tsvigoulis G, Spengos K, Zakopoulos N, Syntetos A, Manios E, et al. U-shaped relationship between mortality and admission blood pressure in patients with acute stroke. *J Intern Med*. 2004;255:257–65. doi:10.1046/j.1365-2796.2003.01291.x.
 17. Mistry EA, Mehta T, Mistry A, Arora N, Starosciak AK, La Los Rios Rosa F de, et al. Blood Pressure Variability and Neurologic Outcome After Endovascular Thrombectomy: A Secondary Analysis of the BEST Study. *Stroke*. 2020;51:511–8. doi:10.1161/JAHA.118.009378.
 18. Liu D, Nie X, Pan Y, Yan H, Pu Y, Wei Y, et al. Adverse Outcomes Associated With Higher Mean Blood Pressure and Greater Blood Pressure Variability Immediately After Successful Embolectomy in Those With Acute Ischemic Stroke, and the Influence of Pretreatment Collateral Circulation Status. *J Am Heart Assoc*. 2021;10:e019350. doi:10.1161/STROKEAHA.118.024147.
 19. Petersen NH, Kodali S, Meng C, Li F, Nguyen CK, Peshwe KU, et al. Blood Pressure Trajectory Groups and Outcome After Endovascular Thrombectomy: A Multicenter Study. *Stroke*. 2022;53:1216–25. doi:10.1161/STROKEAHA.121.034408.

20. Hossmann KA. Viability thresholds and the penumbra of focal ischemia. *Ann Neurol*. 1994;36:557–65. doi:10.1002/ana.410360404.
21. Caplan LR, Hennerici M. Impaired clearance of emboli (washout) is an important link between hypoperfusion, embolism, and ischemic stroke. *Arch Neurol*. 1998;55:1475–82. doi:10.1001/archneur.55.11.1475.
22. Kasner SE, Chimowitz MI, Lynn MJ, Howlett-Smith H, Stern BJ, Hertzberg VS, et al. Predictors of ischemic stroke in the territory of a symptomatic intracranial arterial stenosis. *Circulation*. 2006;113:555–63. doi:10.1161/CIRCULATIONAHA.105.578229.
23. Upadhyaya P, Mehta A, Luby M, Ansari S, Lynch JK, Hsia AW, et al. Good outcome associated with blood-brain barrier disruption and lower blood pressure after endovascular therapy. *J Stroke Cerebrovasc Dis*. 2023;32:106870. doi:10.1016/j.jstrokecerebrovasdis.2022.106870.
24. Anadani M, Orabi MY, Alawieh A, Goyal N, Alexandrov AV, Petersen N, et al. Blood Pressure and Outcome After Mechanical Thrombectomy With Successful Revascularization. *Stroke*. 2019;50:2448–54. doi:10.1161/STROKEAHA.118.024687.
25. Matusevicius M, Cooray C, Bottai M, Mazya M, Tsivgoulis G, Nunes AP, et al. Blood Pressure After Endovascular Thrombectomy: Modeling for Outcomes Based on Recanalization Status. *Stroke*. 2020;51:519–25. doi:10.1161/STROKEAHA.119.026914.
26. Katsanos AH, Malhotra K, Ahmed N, Seitidis G, Mistry EA, Mavridis D, et al. Blood Pressure After Endovascular Thrombectomy and Outcomes in Patients With Acute Ischemic Stroke: An Individual Patient Data Meta-analysis. *Neurology*. 2022;98:e291–e301. doi:10.1212/WNL.0000000000013049.
27. Bernardo-Castro S, Sousa JA, Brás A, Cecília C, Rodrigues B, Almendra L, et al. Pathophysiology of Blood-Brain Barrier Permeability Throughout the Different Stages of Ischemic Stroke and Its Implication on Hemorrhagic Transformation and Recovery. *Front Neurol*. 2020;11:594672. doi:10.1126/scisignal.aay5686.
28. Reinhard M, Rutsch S, Lambeck J, Wihler C, Czosnyka M, Weiller C, Hetzel A. Dynamic cerebral autoregulation associates with infarct size and outcome after ischemic stroke. *Acta Neurol Scand*. 2012;125:156–62. doi:10.1111/j.1600-0404.2011.01515.x.
29. Dabertrand F, Nelson MT, Brayden JE. Acidosis dilates brain parenchymal arterioles by conversion of calcium waves to sparks to activate BK channels. *Circ Res*. 2012;110:285–94. doi:10.1161/CIRCRESAHA.111.258145.
30. Soricelli A, Postiglione A, Cuocolo A, Chiara S de, Ruocco A, Brunetti A, et al. Effect of adenosine on cerebral blood flow as evaluated by single-photon emission computed tomography in normal subjects and in patients with occlusive carotid disease. A comparison with acetazolamide. *Stroke*. 1995;26:1572–6. doi:10.1161/01.STR.26.9.1572.
31. Shankar H, Pagel PS. Potential adverse ultrasound-related biological effects: A critical review. *Anesthesiology*. 2011;115:1109–24. doi:10.1097/ALN.0b013e31822fd1f1.
32. Manning LS, Rothwell PM, Potter JF, Robinson TG. Prognostic Significance of Short-Term Blood Pressure Variability in Acute Stroke: Systematic Review. *Stroke*. 2015;46:2482–90. doi:10.1161/STROKEAHA.115.010075.

Table 1. Patient characteristics

Total patients included	91
Age, yr, mean \pm SD	59.8 \pm 11.5
Male, n (%)	76 (83.5)
Clinical, laboratory, and imaging data at admission to the hospital	
Admission NIHSS, median (IQR)	13 (11 – 17)
Admission SBP mmHg, mean \pm SD	148 \pm 26
Admission DBP mmHg, mean \pm SD	86 \pm 18
Admission MAP, mmHg, mean \pm SD	107 \pm 20
Admission glucose, mmol/L, mean \pm SD	7.5 \pm 2.6
Left-sided infarct, n (%)	52 (57.1)
ASPECTS score, median (IQR)	8 (7 – 9)
Occlusion on angiography, n (%)	
ICA (C1 – 3)	29 (31.9)
ICA (C4 – 7)	13 (14.3)
MCA (M1 – M2)	49 (53.8)
Medical history, n (%)	
Hypertension	60 (65.9)
Coronary artery disease	20 (22.0)
Atrial fibrillation	25 (27.5)
Dislipidemia	23 (25.3)
Diabetes mellitus	26 (28.6)
Smoking	56 (61.5)
TIA or stroke	32 (35.2)
Stroke subtype, n (%)	
Large artery atherosclerotic	63 (69.2)
Cardioembolism	22 (24.2)
Others†	6 (6.6)
Recanalization treatment	
Intravenous tPA, n (%)	33 (36.3)
Stent retrieval attempts, median (IQR)	1 (0 – 2)
Time from symptom onset to reperfusion, min, median (IQR)	509 (350 – 780)
TICI 2b, n (%)	19 (20.9)
TICI 3, n (%)	72 (79.1)
Post-procedural blood pressure	
Number of measurements, mean \pm SD	36.6 \pm 8.2
SBP, mmHg, mean \pm SD	135 \pm 14
DBP, mmHg, mean \pm SD	77 \pm 10
MAP, mmHg, mean \pm SD	97 \pm 10
Coefficient of variation of SBP, mean \pm SD‡	10.8 \pm 2.7
Coefficient of variation of DBP, mean \pm SD‡	13.4 \pm 3.9
Coefficient of variation of MAP, mean \pm SD‡	10.9 \pm 3.1
TCD-based CA monitoring	
Time from reperfusion to CA monitoring initiation, min, median (IQR)	1304 (847 – 2127)
Dynamic parameters	
TIME _{out-of-range} , %, median (IQR)	75.9 (40.4 – 99.1)
BURDEN _{out-of-range} , mmHg·hr, median (IQR)	295.0 (133.5 – 488.1)
TIME _{above-range} , %, median (IQR)	13.5 (0 – 42.9)
BURDEN _{above-range} , mmHg·hr, median (IQR)	25.1 (0 – 182.7)
TIME _{below-range} , %, median (IQR)	37.4 (8.7 – 68.5)
BURDEN _{below-range} , mmHg·hr, median (IQR)	111.1 (13.8 – 305.4)
Hemorrhagic transformation, n (%)	
HI 1	8 (8.8)
HI 2	18 (19.8)

All rights reserved. No reuse allowed without permission.

PH 1	3 (3.3)
PH 2	6 (6.6)
sICH	6 (6.6)
END, n (%)	16 (17.6)
Infarct growth at 7 days, mL, median (IQR)	10 (2 – 60)
90-d mRS 3-6, n (%)	56 (61.5)

ASPECTS indicates Alberta Stroke Program Early CT Score; DBP, diastolic blood pressure; END, early neurological deterioration; HI, hemorrhagic infarction; ICA, internal carotid artery; IQR, interquartile range; MAP, mean arterial pressure; MCA, middle cerebral artery; mRS, modified Rankin Scale; TICI, Thrombolysis in Cerebral Infarction; NIHSS, National Institute of Health Stroke Scale; PH, parenchymal hematoma; SBP, systolic blood pressure; SD, standard deviation; sICH, symptomatic intracerebral hemorrhage; TIA, transient ischemic attack; tPA, tissue plasminogen activator.

† Including one subject with internal carotid artery dissection, and five cryptogenic.

‡ Coefficient of variation ($=SD_{BP} / \text{Mean}_{BP} \times 100$) represents the variability of blood pressure [32].

Table 2. Deviation of blood pressure from autoregulation limits with outcomes using Logistic regression model.

Variables	<i>OR</i>	95% CI	<i>P</i> value	a <i>OR</i> †	95% CI	<i>P</i> value
END						
Every 10% time increase in TIME _{out-of-range}	1.38	1.06 – 1.79	0.015*	1.38	1.05 – 1.83	0.022*
Every 100h·mmHg increase in BURDEN _{out-of-range}	1.22	1.02 – 1.46	0.027*	1.22	1.01 – 1.48	0.039*
sICH						
Every 10% increase in TIME _{above-range}	1.31	0.99 – 1.74	0.059	1.45	1.01 – 2.07	0.043*
Every 100h·mmHg increase in BURDEN _{above-range}	1.33	0.92 – 1.92	0.127	1.57	0.98 – 2.53	0.061
90-day functional outcome (mRS 3 – 6)						
Every 10% increase in TIME _{out-of-range}	1.17	1.03 – 1.33	0.016*	1.14	0.99 – 1.31	0.067
Every 100h·mmHg increase in BURDEN _{out-of-range}	1.37	1.11 – 1.68	0.003*	1.29	1.05 – 1.59	0.018*

†Adjusted for age, admission NIHSS score, time from symptom onset to reperfusion, admission MAP, and ASPECTS score.

**P*<0.05.

ASPECTS indicates Alberta Stroke Program Early CT Score; CI, confidential interval; END, early neurological deterioration; MAP, mean arterial pressure; mRS, modified Rankin Scale; NIHSS, National Institute of Health Stroke Scale; *OR*, odds ratio; sICH, symptomatic intracranial hemorrhage.

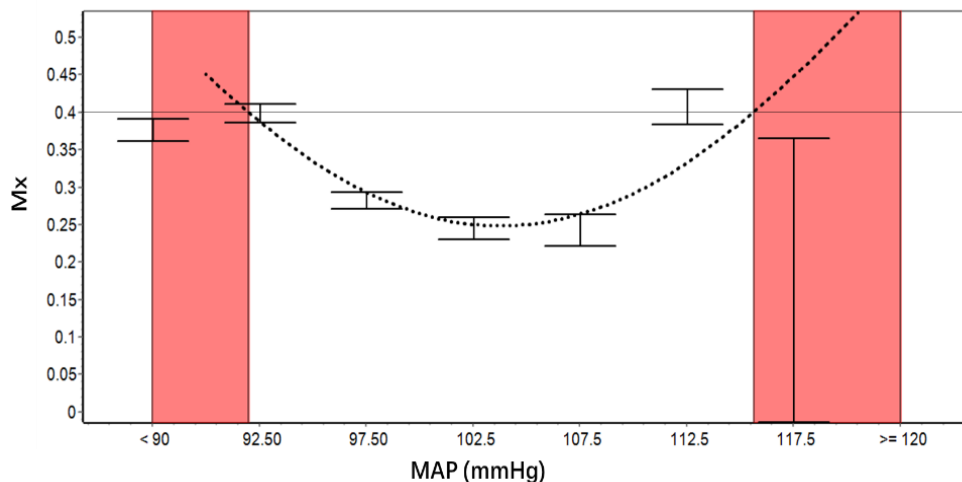
Table 3. Deviation of blood pressure from autoregulation limits with outcomes using a linear regression model.

Variables	β	95% CI	<i>P</i> value	$a\beta^\dagger$	95% CI	<i>P</i> value
ΔNIHSS at 7 days compared to admission						
Every 10% increase in TIME _{out-of-range}	0.44	0.08 – 0.80	0.018*	0.35	-0.02 – 0.72	0.067
Every 100h·mmHg increase in BURDEN _{out-of-range}	0.64	0.21 – 1.06	0.004*	0.51	0.07 – 0.96	0.024*
Infarct volume growth at 7 days compared to admission						
Every 10% time increase in TIME _{below-range}	3.97	-0.41 – 8.36	0.075	4.12	-0.42 – 8.67	0.075
Every 100h·mmHg increase in BURDEN _{below-range}	5.19	0.11 – 10.26	0.045*	5.47	0.13 – 10.80	0.045*
mRS scores at 90 days						
Every 10% increase in TIME _{out-of-range}	0.13	0.03 – 0.23	0.011*	0.09	-0.01 – 0.19	0.063
Every 100h·mmHg increase in BURDEN _{out-of-range}	0.21	0.09 – 0.32	<0.001*	0.17	0.06 – 0.29	0.004*

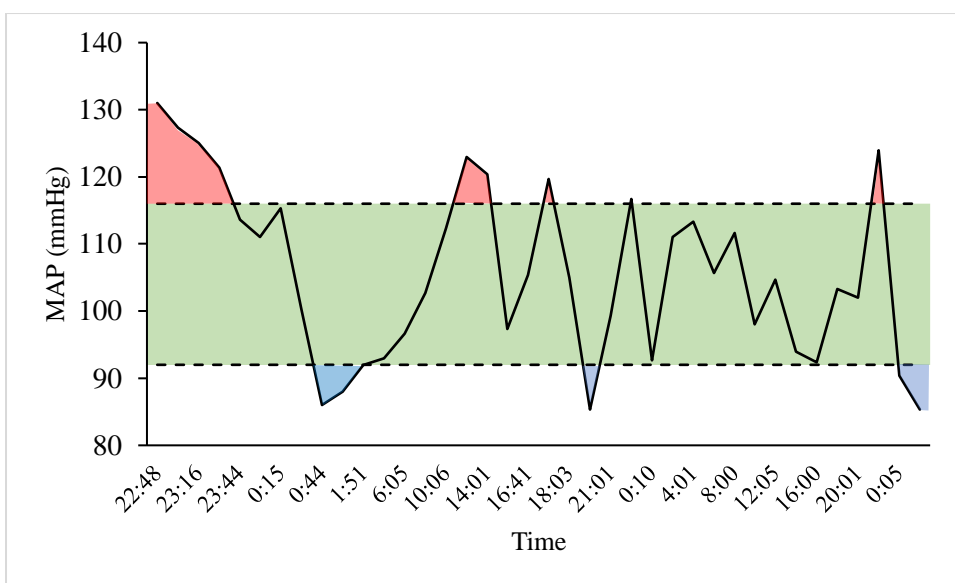
† Adjusted for age, admission NIHSS score, time from symptom onset to reperfusion, admission MAP, and ASPECTS score.

* $P < 0.05$.

ASPECTS indicates Alberta Stroke Program Early CT Score; CI, confidential interval; MAP, mean arterial pressure; mRS, modified Rankin Scale; NIHSS, National Institute of Health Stroke Scale.

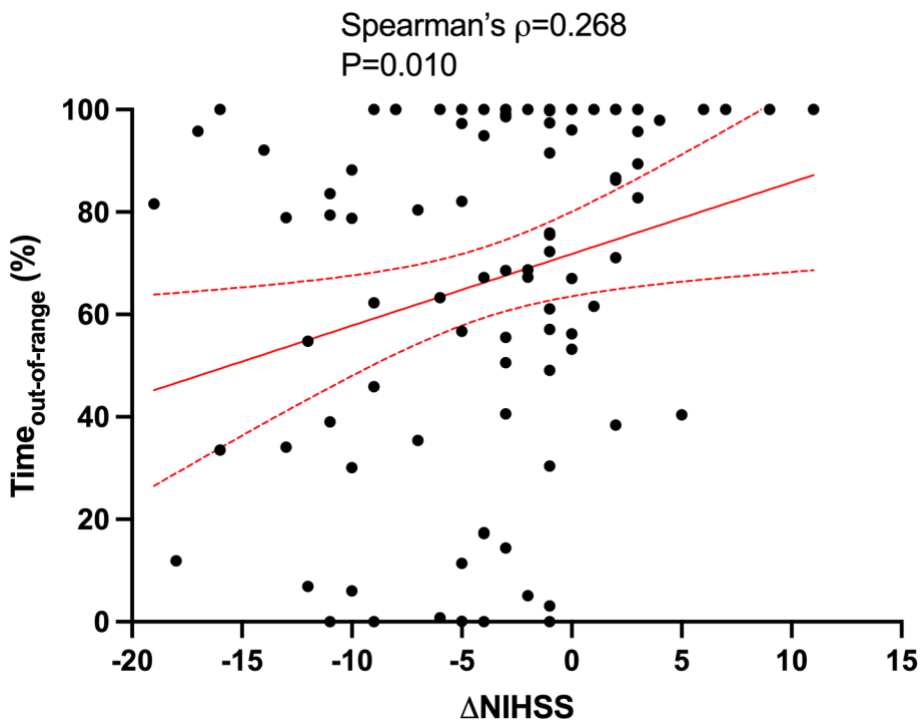


A.

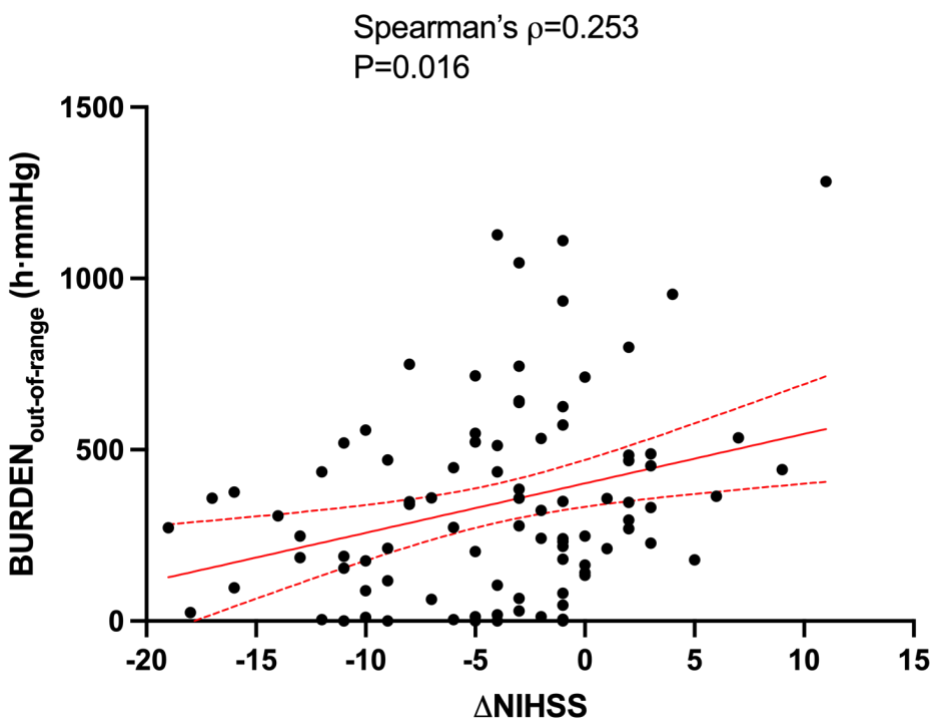


B.

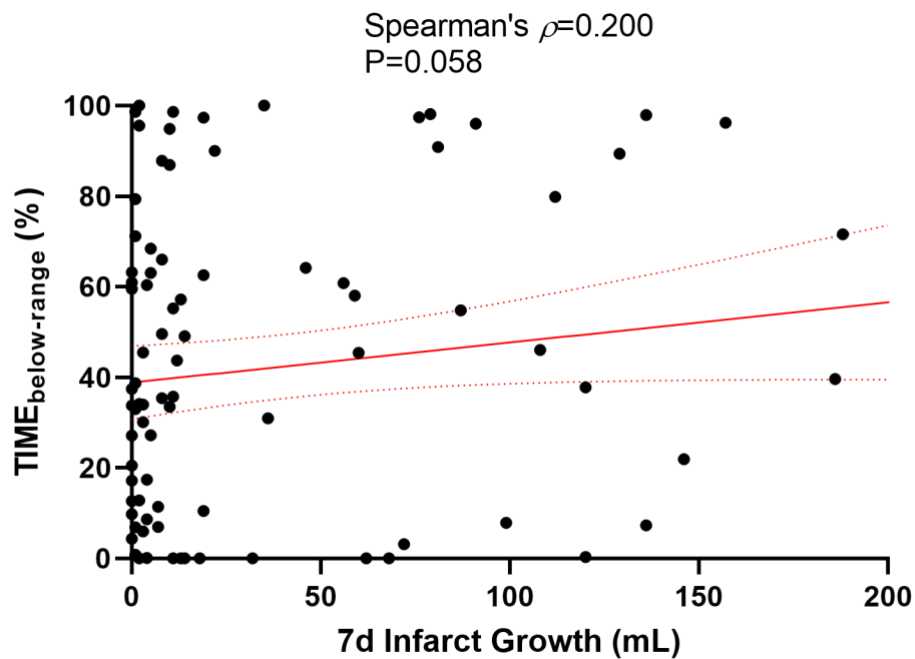
Fig. 1 (A) A U-shaped Mx-MAP curve could be drawn based on CA monitoring for a patient who had undergone EVT. After applying the $Mx=+0.4$ threshold, the two intersections of the curve and the threshold line (92 and 116 mmHg) were the upper and the lower limits of autoregulation, respectively. (B) MAP fluctuation of the same patient. The green area represented the MAP range in which CA was preserved. The red and blue area were $BURDEN_{above-range}$ and $BURDEN_{below-range}$, respectively. CA indicates cerebral autoregulation; EVT, endovascular therapy; MAP, mean arterial pressure; Mx, mean flow index.



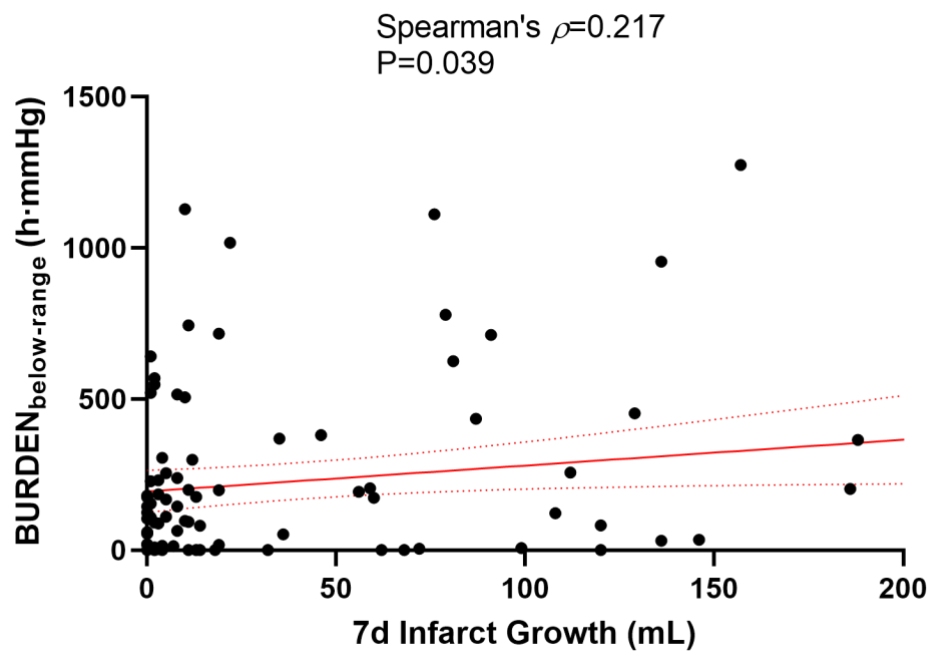
A.



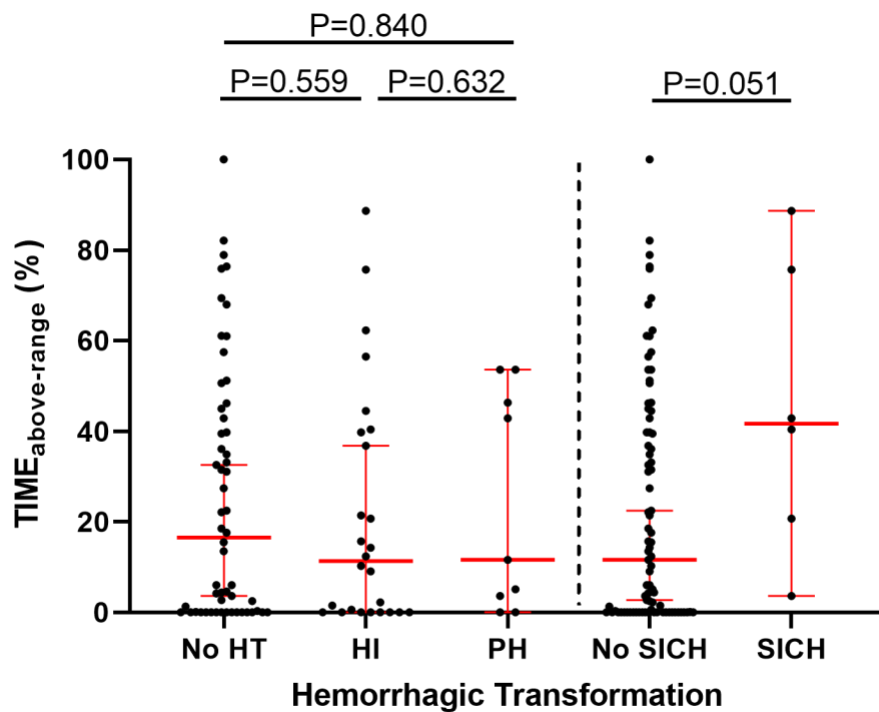
B.



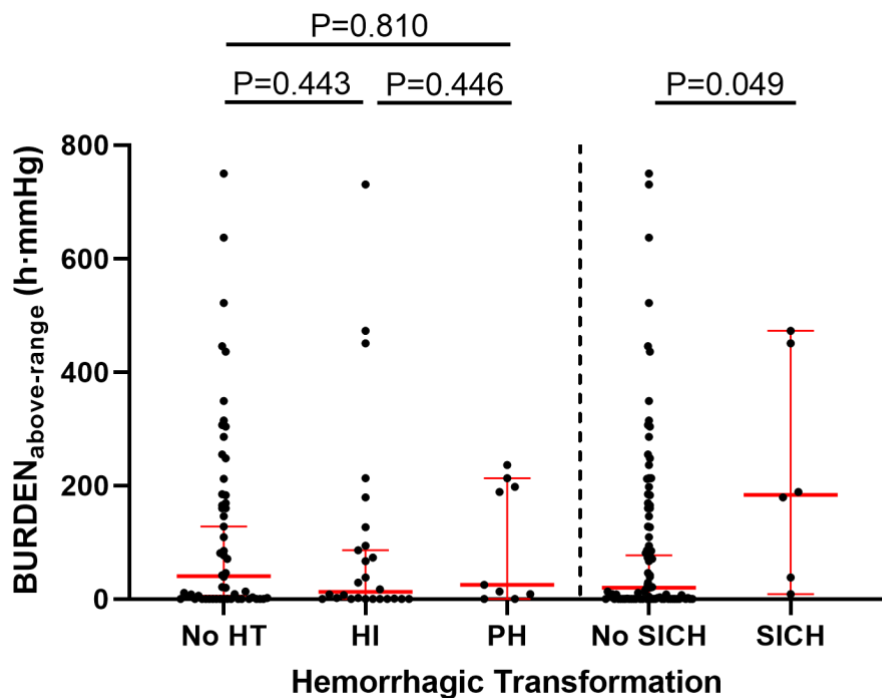
C.



D.



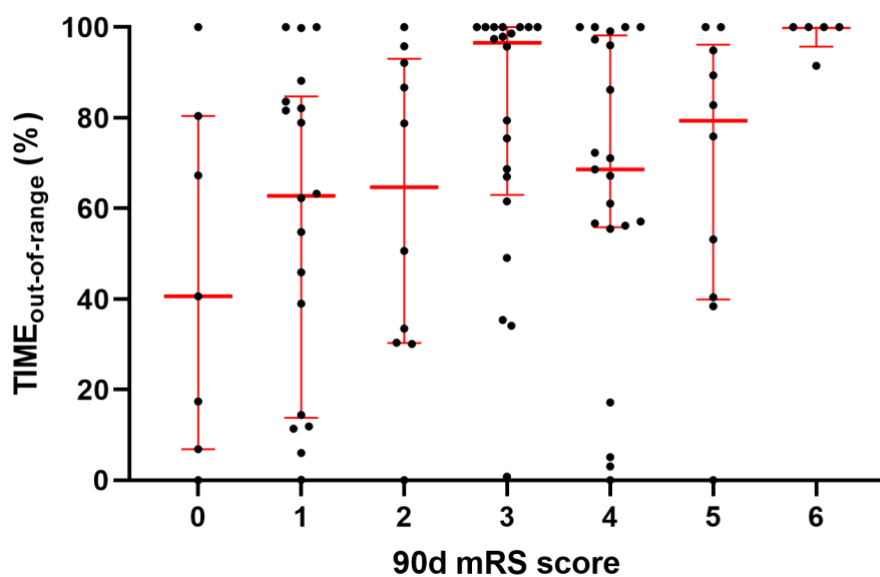
E.



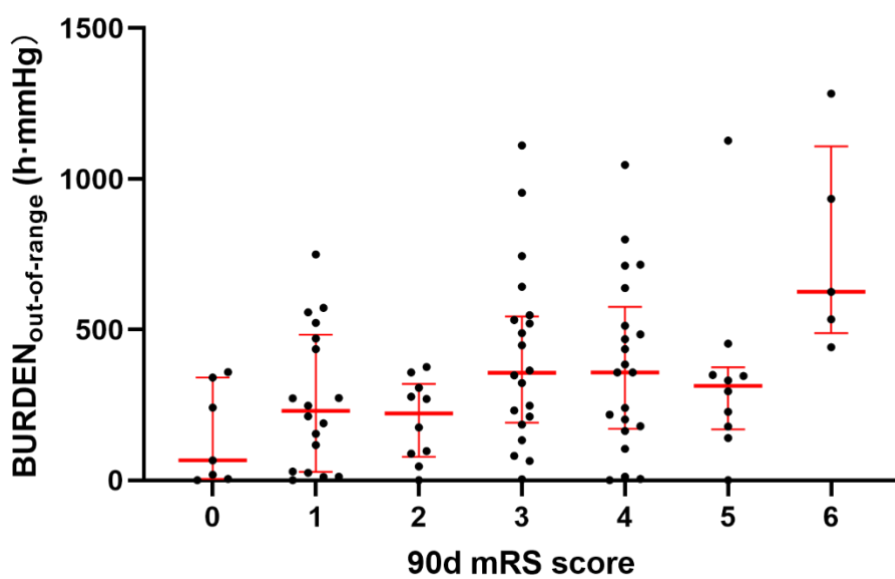
F.

Fig. 2 (A, B) Both the TIME_{out-of-range} and the BURDEN_{out-of-range} were associated with Δ NIHSS (=NIHSS scores at 7 days – NIHSS at admission). **(C, D)** The BURDEN_{below-range} was associated with infarct growth within 7 days, while the correlation between TIME_{below-range} and infarct growth was statistically insignificant. **(E, F)** Patients with sICH had a higher TIME_{above-range} and BURDEN_{above-range} but the differences were of marginal significance.

HI indicates hemorrhagic infarction; HT, hemorrhagic transformation; NIHSS, National Institute of Health Stroke Scale; PH, parenchymal hematoma; sICH, symptomatic intracranial hemorrhage.



A.



B.

Fig. 3 (A, B) Both the TIME_{out-of-range} and the BURDEN_{out-of-range} demonstrated an increasing trend with higher 90-day mRS score. mRS indicates modified Rankin Scale.