

This module is specific for Spheroidization



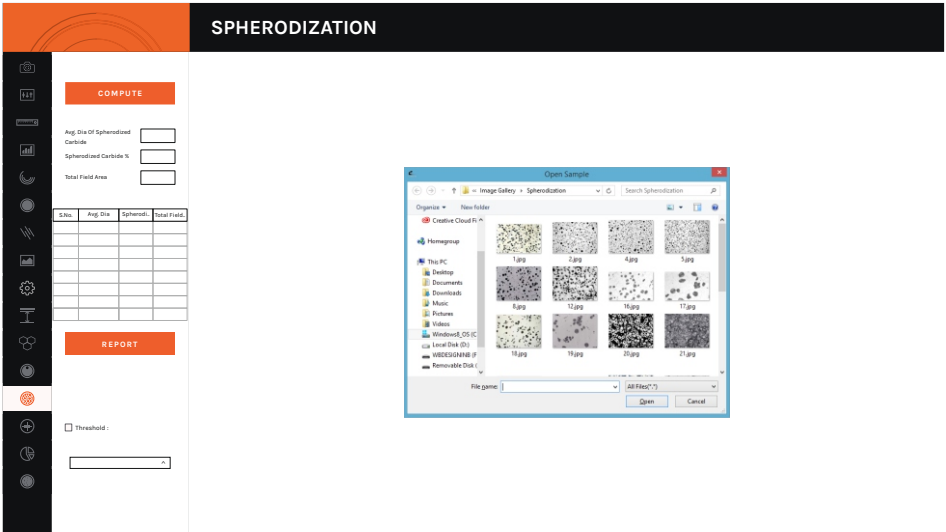
SPHEROIDIZATION

ABOUT THE SPHEROIDIZATION

This module is designed to analyze spheroidal graphite (nodules). The nodules are separated from non-nodules on predefined spheroidicity. Nodules acquire blue color and non-nodule get red color. Nodules from (designated by Roman numbers from I to VI) and size (designated by Arabic numbers 1 to 8) are reported along with the calculated nodules/sq mm.

1st Step

Fig-81



Click two times on an image to load appropriate image to be analyzed.

2nd Step

Select the appropriate saved calibration to perform analysis on the image.

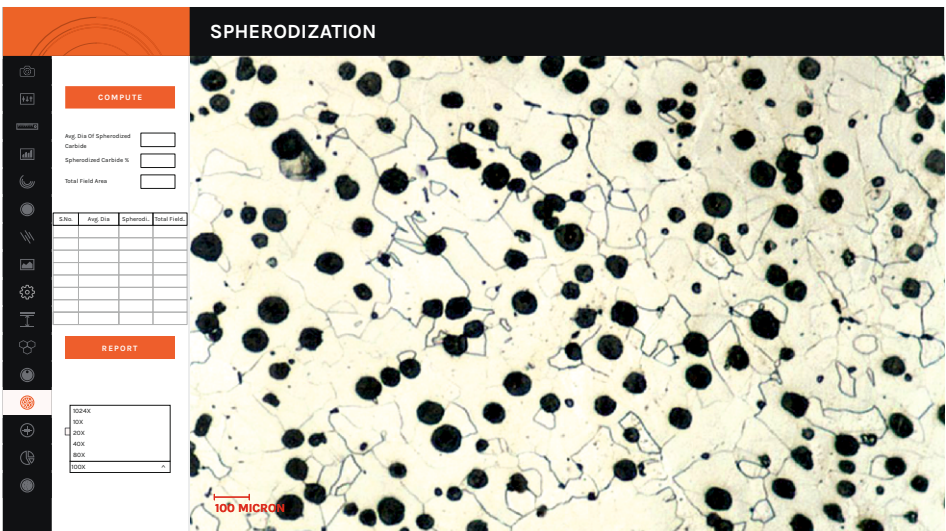


Fig-82

3rd Step

Fig-83



Move scrollbar till all particles are selected.

4th Step

Click on **COMPUTE** to analyze the field 1. Click on **REPORT** to transfer results in excel.

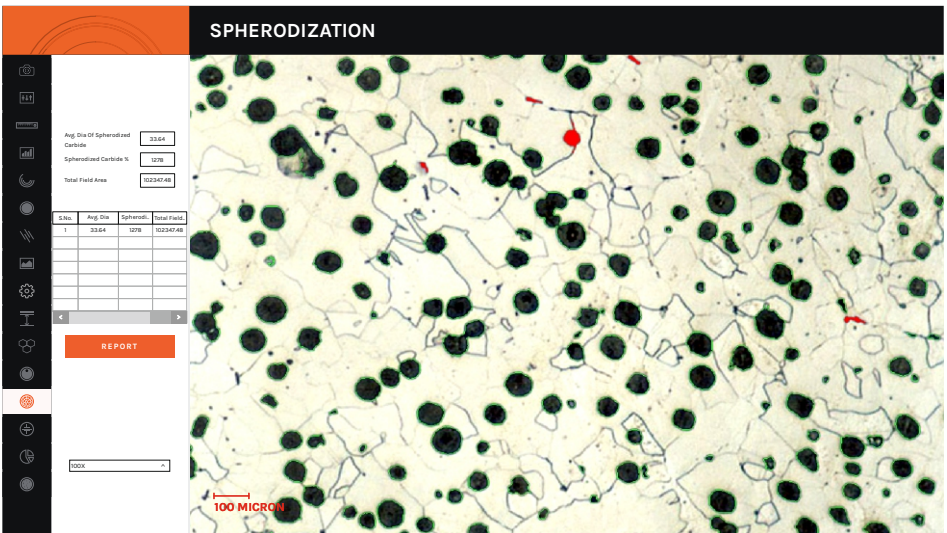


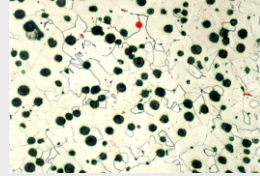
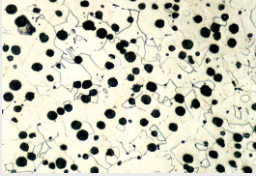
Fig-84

RESULT ARE AVAILABLE IN EXCEL IN A-4 SIZE

SPHERODIZATION REPORT

CUSTOMER NAME :	Dewinter Optical Inc.	PART NAME:	Seamless Pipe
EVALUATION DATE :	2016-09-08-14-39-53	PART NO. :	124
REPORT NO. :	223	MATERIAL GRADE :	223
DRAWING NO.:	---	SUPPLIER HEAT QTY.:	---
SUPPLIER HEAT NO.:	---	BATCH NO.:	---
INVOICE NO./QTY.:	---	COLOR CODE :	---

SPHERODIZATION REPORT - ASTM A892



Average Dia Of Spherodized Carbide	Spherodized Carbide Percentage	Total Field Area
33.64	12.78	102347.48

Remarks
Approved By

Fig-85