

North Carolina Shell Club Oral Auction

12 November 2022



Katie B. Hines Senior Center
Carolina Beach, North Carolina

Auctioneers John & Nancy Timmerman

This is the largest offering of shells and marine specimens the Shell Club has ever made for oral auction. There are many well-known standards and unusual species offered for the first time by the club.

Our Donors

We owe a debt of gratitude to the many generous collectors, their families and shell club members who have made available the fine content of this auction. My goal is to credit each donor per lot. No record of many of the donors was recovered after the sudden death of Everett Long, who managed the club inventory. I apologize in advance for the omissions of donors.

Restricted

“Restricted” There are international trade restrictions governing several of the specimens offered. Trade in these specimens within the United States is unregulated. When you see “Restricted” as part of a listing it indicates limitations per international trade. Bidding for and owning the specimens via the auction is legal. Just be aware that taking the specimen out of USA will require export permits if it is allowed at all.

All of the restricted specimens offered were acquired years before laws were enacted limiting their trade. The Shell Club through the generous donations of estate collections has received the specimens.

For collectors hoping to add restricted species to their collections “recycled” provides an excellent opportunity to gain specimens without breaking the law. You continue the preservation of increasingly scarce species for scientific study and appreciation by future generations.

Sincerely

John Timmerman, Auction Chair



1

Great Green Turban

Turbo marmoratus Linnaeus, 1758
w/op, No data, Indo-Pacific 159mm
(tall, largest dimension)

Donated By Friends of NCSC



2

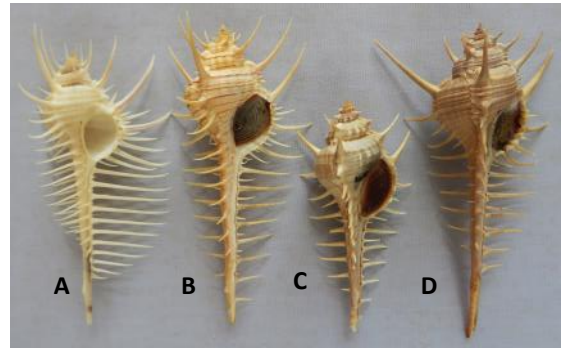
Pacific Trumpet Triton

Charonia tritonis (Linnaeus, 1758)
No data, Indo-Pacific 334mm

Donated By Friends of NCSC

Restricted

3



Murex Collection, 4 species

(A) **Venus Comb Murex**, *Murex pectin* [Lightfoot], 1786 109mm

(B) **Troschel's Murex**, *Murex trochelli* Lischke, 1868 w/op, 112mm

(C) **Woodcock Murex**, *Murex scolopax* Dillwyn, 1817 w/op, 87mm

(D) **Caltrop Murex**, *Murex tribulus* Linnaeus, 1758 w/op, 118mm

Donated By Friends of NCSC



4

Rosebranch Murex

Chicoreus palmarosae (Lamarck, 1822)
Sri Lanka, w/op, 96mm

Donated By Friends of NCSC



5

Regal Murex

Phyllonotus regius (Swainson, 1821)
No data, West Central America 142mm

Donated By Friends of NCSC



6

Staghorn Coral a nice complete specimen

Acropora cervicornis (Lamarck, 1816)
No data, 251mm (across largest spread of branches)

Donated By Friends of NCSC

Restricted



7

Chambered Nautilus, 2 shells

Nautilus pompilius Linnaeus, 1758
No data, SW Pacific 103 – 176mm
Note: the smaller shell has a crack in it

Donated By Friends of NCSC

Restricted



8

Cameo Helmet

Cassia madagascariensis Lamarck, 1822
No data, NC – Caribbean 229mm

Donated By Friends of NCSC

9



Venus Comb Murex, 2 shells, one w/op
Murex pectin [Lightfoot], 1786
128 – 140mm

Donated By Friends of NCSC

10



Triangulate Murex, 2 shells, w/op
Pterochelus triformis (Reeve, 1845)
49 – 57mm

Donated By Mique Pinkerton

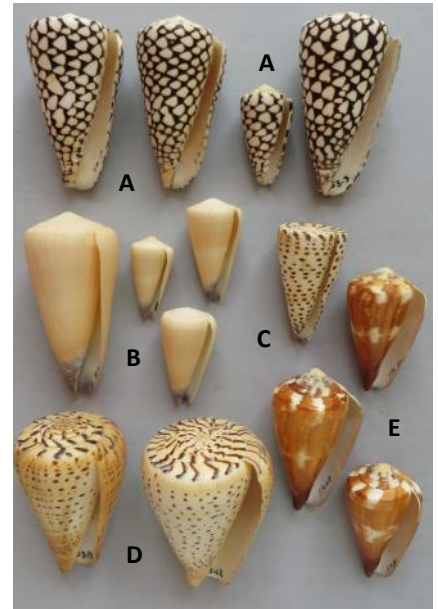
11



Princely Cone
Conus aulicus Linnaeus, 1758
127mm

Donated By Friends of NCSC

12



Cone Collection I, 5 species

(A) **Marble Cone** *Conus marmoreus* Linnaeus, 1758
4 shells 57 – 100mm

(B) **Virgin Cone** *Conus virgo* Linnaeus, 1758
4 shells, 51 – 108mm

(C) **Lettered Cone** *Conus litteratus* Linnaeus, 1758
70mm

(D) **Beech Cone** *Conus betulinus* Linnaeus, 1758
2 shells, 105 – 110mm

(E) **Flag Cone** *Conus vexillum* Gmelin, 1791
3 shells, 77 – 94mm

Donated By Friends of NCSC



13

Elongate Giant Clam
Tridacna maxima (Röding, 1789)
87mm

Donated By Friends of NCSC

Restricted



14

Lion's Paw, 2 pairs
Nodipecten fragosus (Conrad, 1849)
No data, SE USA 85 – 88mm

Donated By Friends of NCSC



15

Bear Paw Clam, 1 large single, 1 small pair
Hippopus hippopus (Linnaeus, 1758)
No data, SW Pacific, 97 & 226mm

Donated By Friends of NCSC

Restricted

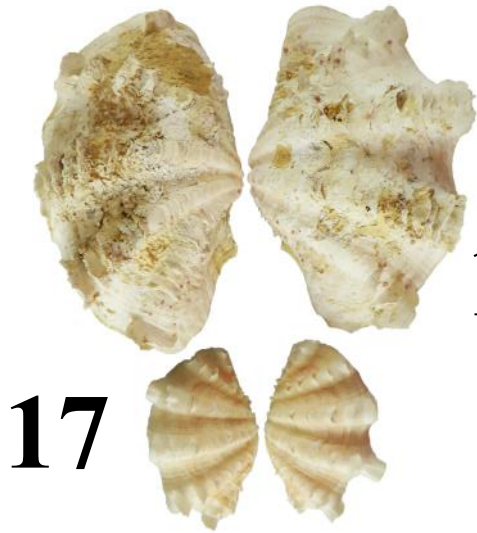
16



Bear Paw Clam, large
Hippopus hippopus (Linnaeus, 1758)
No data, SW Pacific, 212mm

Donated By Friends of NCSC

Restricted



17

Fluted Giant Clam, 2 pairs
Tridacna squamosa Lamarck, 1819
No data, Indo-Pacific 116 – 229mm

Donated By Friends of NCSC

Restricted

18

Crocus Giant Clam
Tridacna crocea Lamarck, 1819
No data, SW Pacific, 125mm

Donated By Friends of NCSC

Restricted



19

Austral Scallop
Mimachlamys australis (Lamarck, 1819)
No data Australia 95mm

Donated By Friends of NCSC



20

Noble Scallop, 3 pairs
Mimachlamys crassicostata (G.B. Sowerby II, 1842)
69 – 90mm

Donated By Friends of NCSC

21



Sozon's Cone, 31 shells
Conasprella dellesertii (Récluz, 1843)
Some w/op, 38 – 77mm

Donated By Friends of NCSC

23



Cone Collection III, 13 species

- (A) **Austral Cone** *Conus australis* Holton, 1802 65mm
- (B) **Striate Cone** *Conus striatus* Linnaeus, 1758 71mm
- (C) **Sand Dusted Cone** *Conus arenatus* Hwass, 1792 35mm
- (D) **Marriage Cone** *Conus sponsalis* Hwass, 1792 2 shells, 16 – 20mm
- (E) **Terebra Cone** *Conus terebra* Born, 1778 68mm
- (F) **Flea-bite Cone** *Conus pulicarius* Hwass, 1792 3 shells, 24 – 45mm
- (G) No popular name found, *Conus coelinae* Crosse, 1858 45mm
- (H) **Voluminalis Cone** *Conus voluminalis* Reeve, 1843 37mm
- (I) **Yellow Pacific Cone** *Conus flavidus* Lamarck, 1810 3 shells 34 – 42mm
- (K) **Dark Cone** *Conus furvus* Reeve, 1843 2 shells, 43- 45mm
- (L) **Livid Cone** *Conus lividus* (Hwass in Bruguière, 1792) 4 shells, 32 – 41mm
- (M) **Mouse Cone** *Conus mus* Hwass, 1792 2 shells, 21 – 25mm
- (N) **Lightning Cone** *Conus fulgetrum* G.B. Sowerby I, 1834 3 shells, 11 – 22mm

Donated By Friends of NCSC



22

Cone Collection II, 5 species

- (A) **Bough Cone** *Conus thallisacharius*
G.B.Sowerby I, 1834 5 shells, 44 – 76mm
- (B) **Flag Cone** *Conus vexillum* Gmelin, 1791
1 shell, 112mm
- (C) **Weasel Cone** *Conus mustelinus*
Hwass, 1792 2 shells, 47 – 51mm
- (D) **Lettered Cone** *Conus litteratus* Linnaeus,
1758 3 shells, 83 – 98mm
- (E) **Distant Cone** *Conus distans* Hwass, 1792
2 shells, 82 – 119mm

Donated By Friends of NCSC

24



Crown Cone, 2 shells
Conus regius Gmelin, 1791
one w/op, 33 – 40mm

Donated By Friends of NCSC

25



Conus behelekensis Lauer, 1989
63mm

Donated By Friends of NCSC

26



Grand Cone, 2 shells
Conus pergrandis (Iredale, 1937)
85 – 118mm



27

Cone Collection IV, 3 species

(A) **Hebrew Cone** *Conus ebrareus* Linnaeus, 1758 2 shells, 26 – 32mm

(B) **Checked Cone** *Conus tessellatus* Born, 1778 3 shells, 42 – 50mm

(C) **Soldier Cone** *Conus miles* Linnaeus, 1758 66mm

Donated By Friends of NCSC



28

Threaded Abalone, 5 shells
Haliotis kamtschatkama Jonas, 1845
86 – 124mm

Donated By Friends of NCSC

29



Red Abalone
Haliotis rufescens Swainson, 1822
No data, Baja to Oregon, 215mm

Donated By Friends of NCSC

30

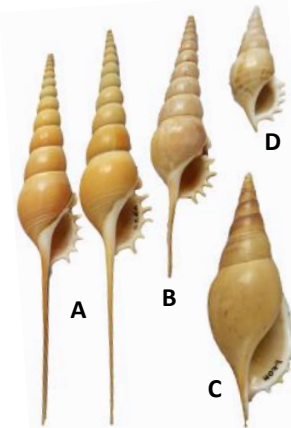


Pink Conch
Aliger gigas (Linnaeus, 1758)
w/op, 245mm

Donated By Friends of NCSC

Restricted

31



Tibia Collection, 4 species

(A) **Shinbone Tibia** *Tibia fusus* (Linnaeus, 1758) 2 shells, 179 – 180mm

(B) **Dark-mouthed Tibia** *Tibia melanocheilus* (A. Adams, 1855) 110mm

(C) **Martin's Tibia** *Rostellaria martini* (Marrat, 1877) 100mm

(D) **Delicate Tibia** *Rostellaria delicatula* (G. Nevill, 1881) 50mm

Donated By Friends of NCSC

32

Shell Lamp
Filled with Scotch Bonnets
Made and Donated by Harold Brown
Picture Coming



33

Imperial Thorny Oyster, 2 shells naturally cemented together
Spondylus imperialis Chenu, 1843
104mm both specimens together including spines

Donated By Friends of NCSC



34

Regal Thorny Oyster, 2 shells
Spondylus regius Linnaeus, 1758
No data, SW Pacific 107 – 140mm includes spines

Donated By Friends of NCSC



35

Nicobar Thorny Oyster
Spondylus nicobaricus Scheibers, 1793
53mm

Donated By Friends of NCSC



36

American Thorny Oyster
Spondylus americanus Hermann, 1781
83mm (not including the stones)

Donated By Friends of NCSC



37

American Thorny Oyster
Spondylus americanus Hermann, 1781
67mm (not including the stone)

Donated By Friends of NCSC



38

Thorny Oyster Species, 2 shells
Spondylus species
No data 55 – 83mm

Donated By Friends of NCSC



39

Thorny Oyster Collection, 6 shells
(A) American Thorny Oyster *Spondylus americanus* Hermann, 1781
(B) Giant Rock Scallop *Hinnites gigantea* (Gray, 1928)
(C) (+ Unidentified species) 48 – 78mm

Donated By Karlynn Morgan

40



European Thorny Oyster
Spondylus gaederopus Linnaeus, 1758
No data, 84mm

Donated By Friends of NCSC



41 **American Thorny Oyster**, 4 shells
Spondylus americanus Hermann, 1781
67 – 80mm

Donated By Karlynn Morgan

44



Spectacular Scallop, 2 shells
Excellichlamys spectabilis (Reeve, 1853)
23 – 25mm

Donated By Friends of NCSC



42 **Bald Scallop**, 3 shells
Flexopecten glaber (Linnaeus, 1758)
33 – 51mm

Donated By Friends of NCSC



45

Spectacular Scallop, 5 shells
Excellichlamys spectabilis (Reeve, 1853)
23 – 25mm

Donated By Friends of NCSC



47

Horned Helmet
Cassia cornuta (Linnaeus, 1758)
304mm

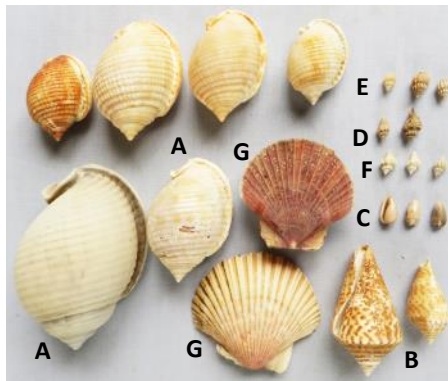
Donated By Jeannie Boyd

Restricted



43 **Tinted Scallop**, 6 shells
Talochlamys tinctus (Poli, 1795)
21 – 26mm

Donated By Mique Pinkerton



North Carolina Collection, 8 species

- (A) **Scotch Bonnet** *Semicassis granulata* (Born, 1778) 6 shells, 37 – 76mm
- (B) **Sozon's Cone** *Conasprella delessertii* (Récluz, 1843) 2 shells 33 – 53mm
- (C) **Jersey Marginella** *Prunum roscidum* Redfield, 1860 17 shells 11mm av.
- (D) **Lightweight Murex** *Favartia levicula* (Dall, 1889) 8 shells, 10mm av.
- (E) **Mansfield's Coralsnail** *Babelomurex mansfieldi* (McGinty, 1940) 9 shells, 12mm av.
- (F) **White Nassa** *Phrontis alba* (Say, 1826) 11 shells, 9mm av.
- (G) **Ravenel's Scallop** *Euvola raveneli* (Dall, 1898) 2 shells 45 – 50mm

48

Donated By Doug Wolfe



46

Display Case
Glass with mirrored floor
13.5" long x 8" wide x 9.5" tall
Made for a football but will hold shells

Donated By Friends of NCSC



49

Shell Lady
Shell Craft with display dome

Art made and donated by Irmgard Cate

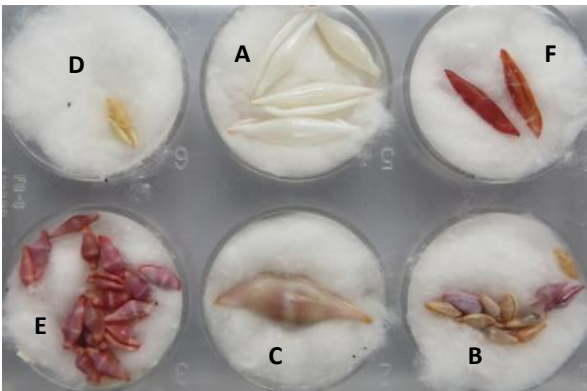


Olive Collection

50

- (A) Tented Olive, *Oliva porphyria* (Linnaeus, 1758) 106mm
- Amethyst Olive, *Oliva annulata* (Gmelin, 1791) 37mm
- Reticulate Olive, *Oliva reticularis* Lamarck, 1811 38mm
- Veined Olive, *Oliva spicata* (Röding, 1788) 2 shells, 40 - 51mm
- Common Olive, *Oliva oliva* (Linnaeus, 1758) 33mm
- Gibbous Olive, *Oliva gibbosa* (Born, 1778) 30mm
- Amethyst Olive, *Oliva amethystina* (Röding, 1798) 30mm
- Inflated Olive, *Oliva bulbosa* (Röding, 1798) 9 shells, 28 - 41mm
- Concave Olive, *Oliva concavospira* G.B. Sowerby III, 1914 26mm
- Purple-mouth Olive, *Oliva caerulea* (Röding, 1798) 23mm
- Flame Olive, *Oliva flammulata* Lamarck, 1811 20mm
- Orange-mouth Olive, *Oliva sericea* (Röding, 1798) 64mm
- Lettered Olive, *Oliva sayana* Ravenel, 1834 68mm
- Tricolor Olive, *Oliva tricolor* Lamarck, 1811 30mm
- Cinnamin Olive, *Ancilla cinnamomea* Lamarck, 1801 3 shells 34 - 50mm
- Keene's Olive, *Oliva keeni* Marrat, 1870 ~25mm
- Oliva multiplicata* Reeve, 1850 ~25mm
- Rufula Olive, *Oliva rufula* Duclos, 1840 ~22mm
- Hirase's Olive, *Oliva hirasei* Kuroda & Habe 1952 ~20mm
- Elegant Olive, *Oliva elegans* Lamarck, 1811 ~26mm
- Mammal Olive, *Amalda mammillata* (Hinds, 1844) ~26mm
- Red-mouth Olive, *Oliva miniacea* (Röding, 1789) 71mm
- Angled Olive, *Oliva incrassata* ([Lightfoot], 1786) 66mm
- Tiger Olive, *Oliva tigrina* Lamarck, 1811 ~25mm

Donated By Friends of NCSC



51

Ovulid Collection

- (A) *Phenacovolva rosea* (A. Adams, 1855)
4 shells, 22mm av.
- (B) *Volva striata* (Lamarck, 1810) 12
shells, 8mm av.
- (C) *Phenacovolva brevirostris*
(Schumacher, 1817) 1 shell, 30mm
- (D) *Prosimnia semperi* (Weinkauff, 1881) 2
shells, 9mm av.
- (E) *Crenavolva rosewateri* Cate, 1973 18
shells, 10mm av.
- (F) *Phenacovolva lanceolata* Sowerby,
1848 2 shells, 17mm av.

Donated By Mique Pinkerton



52

- Melapium lineatum* (Lamarck, 1822)
2 shells
26 - 28mm

Donated By Friends of NCSC



53

Land Snail Collection, 4 species

- (A) Cuvier's Tropid Snail, *Trophidopora cuvieriana* (Petit, 1841) 46mm (Extinct)
- (B) Golden Mouth Papuina, *Papustyla xanthochila* (Pheiffer, 1861) 46mm
- (C) Dyed Amphidromus, *Amphidromus entobaptus* (Dohrn, 1889 1899 2 shells, ~43mm)
- (D) Golden Calocochlia, *Calocochlia chrsochelia* (Sommerby, 1841) 40mm

Donated By Friends of NCSC



54

"Beach Backgammon"

Made and Donated by Paul Zimmerman



55

Florida *Orthalicus* (Tree Snail)
Orthalicus floridensis (Pilsbry, 1891) 7 shells,
37 – 59mm

Donated By Friends of NCSC



56



Florida *Liguus* Tree Snails

2 Bulk Packs

Liguus fasciata (Müller, 1774)

~ 85 shells 29 – 46mm

Liguus fasciatus f. castaneus Simpson, 1920 5 shells, 29 – 46mm

Liguus fasciatus f. vacaensis Simpson, 1920 5 shells, 30 – 42mm

Donated By Friends of NCSC



Elkhorn Coral

Acropora palmata (Lamarck, 1816)

~ 435mm largest span of branches

(soda can is for scale, it is not included in the lot)

Donated By Donnamarie Emmert

Restricted

57

58



Mouse Cowrie

Muracypraea mus (bicornis) (Lamarck, 1816)
47mm

Donated By Mique Pinkerton



59

Golden Cowrie

Callistocypraea aurantium (Gmelin, 1791)
No data, SW Pacific 87mm

Donated By Friends of NCSC

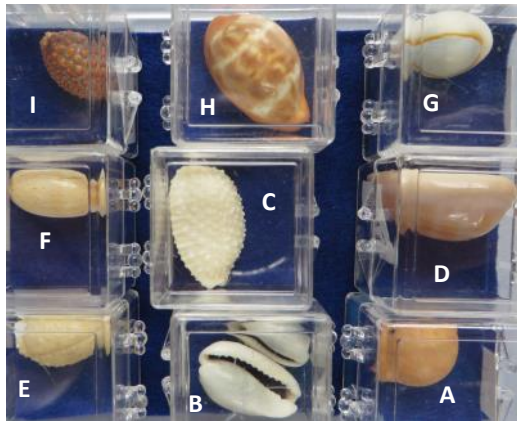


61

Brain Coral

Colpophyllia natans (Houttuyn, 1772)
118mm largest dimension

Donated By Will & Karen Alison
Restricted



60

Cowrie Collection, 9 species

- (A) **Chickpea Cowrie**, *Pustularia bistrinotata* M. Schilder & F. A. Schilder, 1937 20mm
- (B) **Wandering Cowrie**, *Erronea erronea* (Linnaeus, 1758) 2 shells, 19 – 23mm
- (C) **Granulate Cowrie**, *Nucleolaria granulata* (Pease, 1863) 27mm
- (D) **Carnelian Cowrie**, *Lyncina carneola* (Linnaeus, 1758) 28mm
- (E) **Nuclear Cowrie**, *Nuclearia nucleus* (Linnaeus, 1758) 23mm
- (F) **Isabelle's Cowrie**, *Luria isabellamexicana* (Sterns, 1893) 20mm
- (G) **Gold Ring Cowrie**, *Monetaria annulus* (Linnaeus, 1758) 18mm
- (H) **Fig Cowrie**, *Zonaria pyrum* (Gmelin, 1791) 28mm
- (I) **Jenner's Cowrie**, *Jenneria pustulata* ([Lightfoot], 1786) 20mm

Donated By Friends of NCSC



62

Red Pipe Organ Coral

Tubipora musica Linnaeus, 1758
186mm largest dimension

Donated By Friends of NCSC
Restricted



63

Mushroom Coral, 2 specimens
Lobactis scutaria (Lamarck, 1801)
103mm & 188mm

Donated By Friends of NCSC
Restricted



64

Birds Nest Coral

Seriatopora hystrix Dana, 1846
~ 140mm largest span

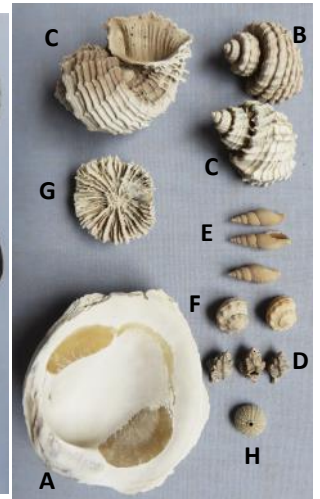
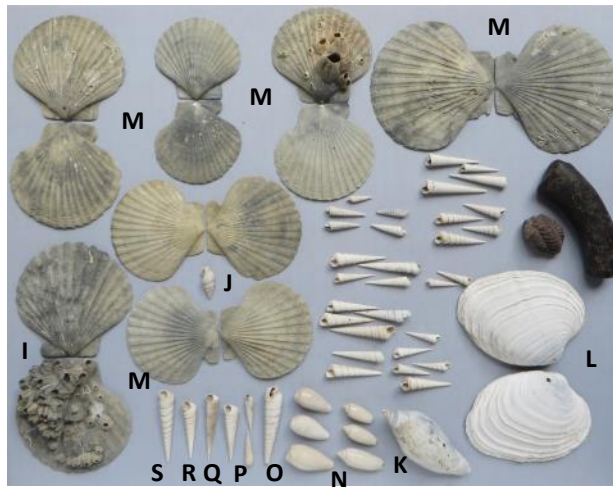
Donated By Friends of NCSC
Restricted



65

Florida Horse Conch, 2 shells
Triplofusus giganteus (Kiener, 1840)
No data, SE USA – Mexico
270mm (17.5”) & 444mm

Donated By Mark Johnson

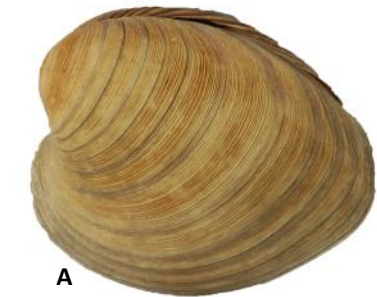


Fossil Collection

66

- (A) *Chama macerophylla* Gmelin, 1791 57mm
- (B) *Trigonostoma tenera* 27mm
- (C) *Trigonostoma druidi* A.A. Olsson & R. E. Petit, 1964 2 shells, 30 – 44mm
- (D) *Murex cellulosus* Conrad, 1846 3 shells, 12mm av.
- (E) *Tritonoharpa lanceolata* (Menke, 1828) 3 shells, 15mm av.
- (F) *Modulus woodringi* Mansfield, 1930 3 shells, 4 – 10mm
- (G) *Wilcoxi desmophyllum* H.S. Gane, 1895 30mm (coral)
- (H) *Punctata arabica* (J.B. Lamarck, 1816) 9mm (sea urchin)
- (I) *Chesapecten nefrens* Ward & Blackwater, 1975 122mm
- (J) *Cymatosyrinx aclinica* Tucker & Wilson, 1933 33mm
- (K) *Volutifusus typus* Conrad, 1863 113mm
- (L) *Mercenaria tridacnoides* Lamarck, 1818 132mm
- (M) *Carolinapecten ebores* Conrad, 1833 6 shells, 86 – 127mm
- (N) *Marginella onchidella* 6 shells 35 – 50mm
- (not shown) *Petalococonchus sculpturatus* Lea, 1846 64mm
- (not shown) *Americoliva carolinensis* Conrad, 1862 3 shells, 35 – 50mm
- (O) *Terebra aclinica* Olsson, 1967 87mm
- (P) *Terebra dislocata* Say, 1822 7 shells, 36 – 39mm
- (Q) *Turritella cookei* Mansfield, 1930 61mm
Turritella cookei clarksvillensis 9 shells 37 - 72mm
Turritella cookei harveyensis Mansfield, 1931 4 shells, 43 – 65mm
- (R) *Turritella alumensis* Mansfield, 1930 7 shells, 55 - 68mm
- (S) *Eichwaldiella magnasulcus* Petuch, 1991 77mm
- (not shown) *Apicula gladensis* Mansfield, 1931 4 shells, 40 – 52mm

Donated By Friends of NCSC



67



- (A) **Southern Quahog**, 2 shells
Mercenaria campechiensis (Gmelin, 1791)
126 – 132mm
- (B) **Ice Age Quahog**
Mercenaria corrugata (Lamarck, 1818)
134mm

Donated By Friends of NCSC



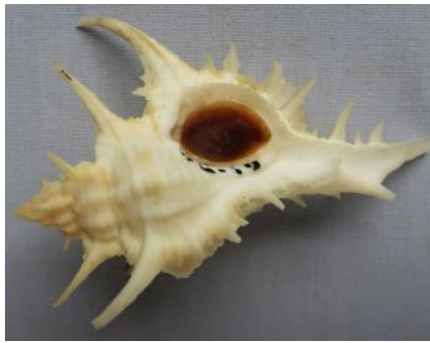
68

- Megalodon Shark Tooth**, 2 teeth
Carcharocles megalodon (Agassiz, 1843)
The complete tooth =
5” tall; 5 3/8” slant height; 4” wide; 11.5oz. weight

Donated By Friends of NCSC



69 **Alabaster Murex**, 3 shells
Siratus alabaster (Reeve, 1845)
119 – 144mm
Donated By Friends of NCSC



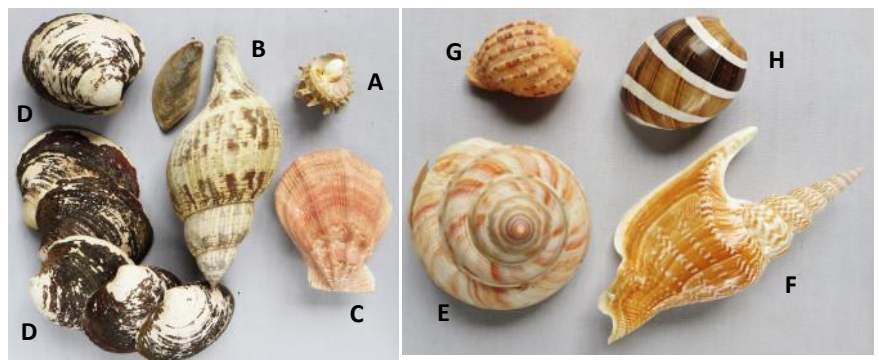
70
Thin-bladed Murex
Siratus tenuivaricosus
(Dautzenbeg, 1927)
w/op, 69mm



71
Lazarus Jewel Box, 4 shells
Chama lazarus Linnaeus, 1758
41 – 69mm
Donated By Friends of NCSC



72 **Diana's Scallop**
Semipallium diana (Crandall, 1979)
30mm
Donated By Friends of NCSC



73 **Shell Collection I**, 8 species
(A) **Girgyllus Star Shell**, *Bolma girgyllus* (Reeve, 1861) w/op, 53mm
(B) **True Tulip**, *Fasciolaria tulipa* (Linnaeus, 1758) w/op, 161mm
(C) **Swift's Scallop**, *Swiftopecten swifti* (Bernardi, 1858) 92mm
(D) **Ocean Quahog**, *Arctica islandica* (Linnaeus, 1758) 1 pair, 76mm
(E) **Emperor's Slit Snail**, *Mikadotrochus hirasei* (Pilsbry, 1903) 70mm
(F) **Lister's Conch**, *Mirabilistrombus listeri* (Gray, 1852) 110mm
(G) **Harp Shell**, *Harpa kajiyana* Habe, 1970 46mm
(H) **Bubble Snail**, *Hydatina albocincta* (van der Hoeven, 1839) 46mm
Donated By Friends of NCSC



74 **Lion's Paw**, 4 shells
Nodipecten fragosus (Conrad, 1849)
Orange – 111mm; brown – 110mm;
*1 mismatched set
Donated By Friends of NCSC



Lion's Paw, 2 shells
Nodipecten fragosus
(Conrad, 1849)
Orange – 86mm;
Red – 92mm
Donated By Friends of NCSC

75

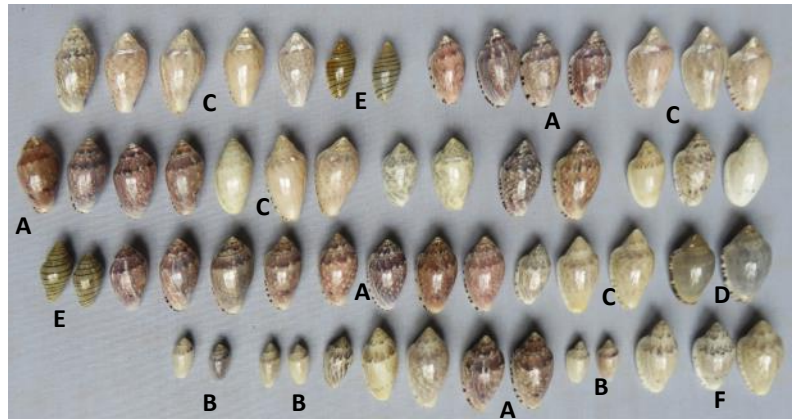
76



Lion's Paw, 3 shells
Nodipecten fragosus (Conrad, 1849)
38 – 56mm
Very knobby “babies”

Donated By Friends of NCSC

77

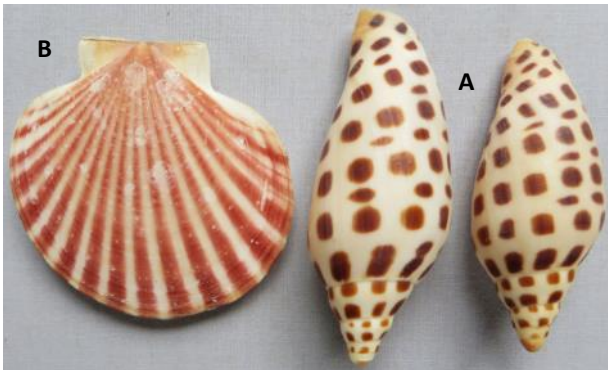


Marginella Collection, 6 species

- (A) **Rosy Marginella**, *Marginella rosea* Lamarck, 1822 20 shells, 23mm av.
- (B) **Peppered Marginella**, *Marginella piperata* Hinds, 1844 7 shells, 15mm av.
- (C) **Woolly Marginella**, *Marginella floccata* G.B. Sowerby III, 1889 21 shells, 25mm av.
- (D) **Ornate Marginella**, *Marginella ornata* Redfield, 1870 2 shells, 21mm
- (E) **Music Marginella**, *Marginella musica* Hinds, 1844 4 shells, 17mm av.
- (F) *Marginella speciesnovae?* 2 shells, 19mm

Donated By Mique Pinkerton

78



Gulf of Mexico Shells

- (A) **Junonia**, *Scaphella junonia* (Lamarck, 1804) 2 shells, 69 – 78mm
- (B) **Tryon's Scallop**, *Aequipecten glyptus* (A.E. Verrill, 1822) 63mm

Donated By Friends of NCSC

80



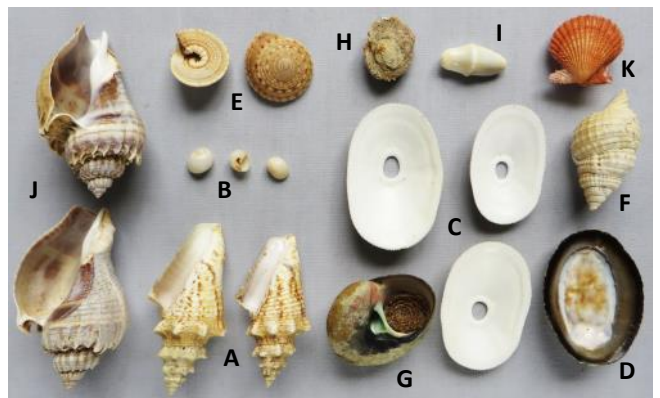
Ammonite Fossils 4 specimens
28 – 49mm

Donated By Friends of NCSC

Shell Collection II, 10 species

- (A) **Pink Conch**, *Aliger gigas* (Linnaeus, 1758) 2 shells, 64 – 73mm
- (B) **White Moonsnail**, *Polinices uberinus* (d'Orbigny, 1842) 3 shells, 10 – 12mm
- (C) **Giant keyhole Limpet**, *Megathura crenulata* (G.B. Sowerby I, 1825) 3 shells, 49 – 60mm
- (D) **Owl Limpet**, *Lottia gigantea* Gray in G.B. Sowerby I, 1834 56mm
- (E) **Nobile Sundial**, *Architectonica nobilis* Röding, 1798 w/op, 2 shells, 27 – 29mm
- (F) **Atlantic Distorsio**, *Distorsio clathrata* (Lamarck, 1816) 53mm
- (G) **Norris Shell**, *Norrisia norrisia* (G.B. Sowerby I, 1838) w/op, 47mm
- (H) **Little Corrugate Jewelbox**, *Chama congregata* Conrad, 1833 26mm
- (I) **Flamingo Tongue**, *Cyphoma gibbosum* (Linnaeus, 1758) 27mm
- (J) **Crown Conch**, *Melongena corona* (Gmelin, 1791) 2 shells, 71 – 74mm
- (K) **Rough Scallop** *Aequipecten muscosus* (W. Wood, 1828) 28mm

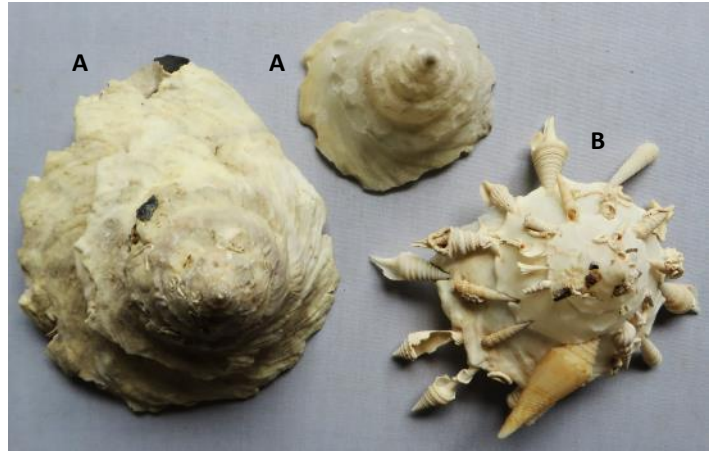
Donated By Doug Wolfe



79



81 Angel Wing
Cyrtopleura costata (Linnaeus, 1758)
 173mm
 A Huge, monster specimen!
 Donated By Friends of NCSC



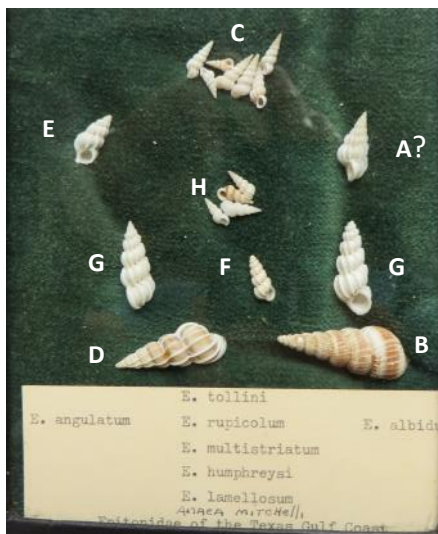
82
 Carrier-shell, 2 species
 (A) Longley's Carrier-shell, *Onustus longleyi* (Bartsch, 1931)
 2 shells, 66 – 120mm
 (B) Pallid Carrier-shell, *Xenophora pallidula* (Reeve, 1842)
 120mm (including attachments)
 Donated By Friends of NCSC



83 (Cuban) Painted Polymita, 6 shells
Polymita picta (Born, 1778)
 26 – 33mm
 Donated By Calvert Marine Museum (via Dora Zimmerman)
 Restricted

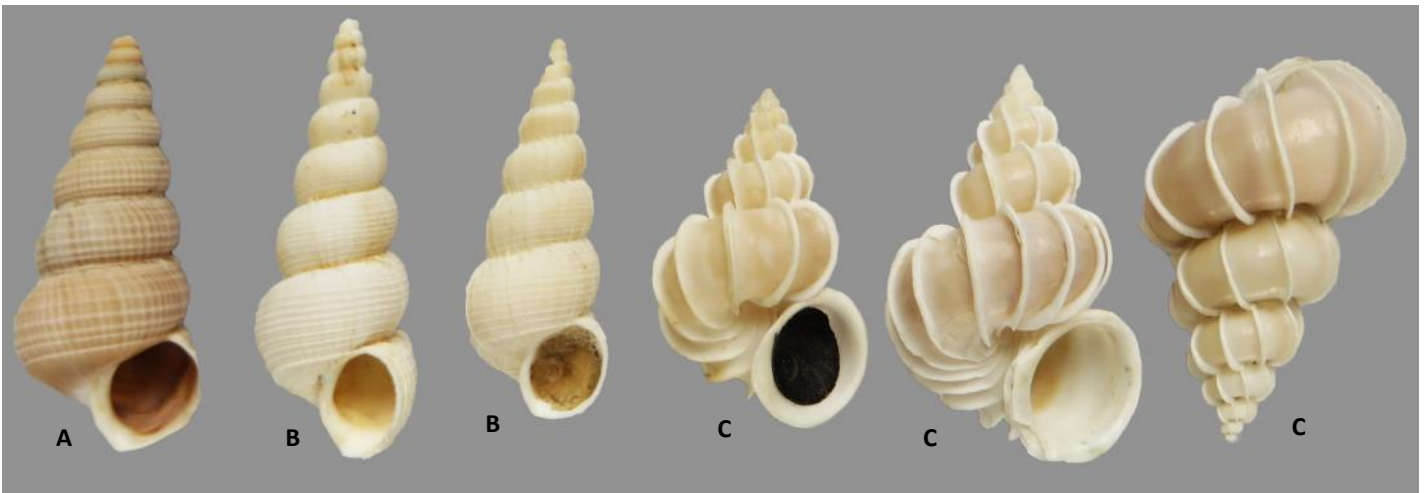


84 Florida Horse Conch
Triplofusus giganteus (Kiener, 1840)
 w/op, 253mm
 Donated By Friends of NCSC



85

Texas Wentletrap Collection, 8 species
 (A) Toll's Wentletrap, *Epitonium tollini* Bartsch, 1938
 (B) Brown-banded Wentletrap, *Gyroscalia rupicola* (Kurtz, 1860)
 (C) Many-ribbed Wentletrap, *Epitonium multistriatum* (Say, 1826)
 (D) Humphrey's Wentletrap, *Epitonium humphreysi* (Kiener, 1838)
 (E) Lamellose Wentletrap, *Gyroscalia lamellosa* (Lamarck, 1822)
 (F) White Wentletrap, *Epitonium albidum* (d'Orbigny, 1842)
 (G) Angulate Wentletrap, *Epitonium angulatum* (Say, 1831)
 (H) Mitchell's Wentletrap, *Amea mitchelli* (Dall, 1896)
 Donated By Friends of NCSC



86

Wentletrap Worldwide Collection, 14 species
(not all shown in the photograph)

- Pyramidal Wentletrap**, *Epitonium pyramidale* (G.B. Sowerby II, 1844) 21mm
- Zelebor Wentletrap**, *Cirostrema zelebori* (R.W. Dunker in Dunker & R. W. Zelebor, 1866) 2 shells, 20mm
- (A) Ferminia Wentletrap**, *Amaea ferminiana* (W.H. Dall, 1908) 60mm
- (B) Magnificent Wentletrap**, *Amaea magnifica* (G.B. Sowerby II, 1844) 3 shells, 40 – 63mm (pictured)
- (C) Precious Wentletrap**, *Epitonium scalarae* (Linnaeus, 1758) one w/op, 4 shells 47 – 57mm (pictured)
- Greenland Wentletrap**, *Boreoscala greenlandica* (G. Perry, 1811) 37mm
- Dall’s Wentletrap**, *Cirostrema dalli* (H.A. Rehder, 1945) 2 shells, w/op, 17 - 28mm
- Lamellose Wentletrap**, *Gyroscala lamellosa* (J.B.P.A. Lamarck, 1822) 2 shells, 27 - 30mm
- Mitchell’s Wentletrap**, *Amaea mitchelli* (W.H. Dall, 1896) 3 shells, 23 – 40mm
- Rugose Wentletrap**, *Epitonium rugosum* (P.F. Röding, 1798) 30mm
- Imperial Wentletrap**, *Epitonium irregulare* (G.B. Sowerby I, 1844) 3 shells, 30 - 36mm
- Angulate Wentletrap**, *Epitonium angulatum* (T. Say, 1831) some w/op, 20 shells, 7 – 27mm
- (D) Edgar’s Wentletrap**, *Cirostrema edgari* (deBoury, 1912) 43mm (pictured)
- Many-ribbed Wentletrap**, *Epitonium multistratum* (Say, 1826) some w/op, 6 shells, 11 – 17mm



Donated By Friends of NCSC



87

Saul’s Murex, 9 shells
Chicoreus saulii (G.B. Sowerby II, 1841)
38 – 75mm

Donated By Friends of NCSC



88

Rossiter’s Murex, 2 shells
Chicoreus rossitei (Crosse, 1872)
One w/op, 50 – 54mm

Donated By Friends of NCSC



89

Three-winged Murex
Pteropurpura trialata (G.B. Sowerby II, 1834)
w/op, 73mm

Donated By Friends of NCSC



90

Giant Tun
Tonna galea (Linnaeus, 1758)
Philippines, 165mm

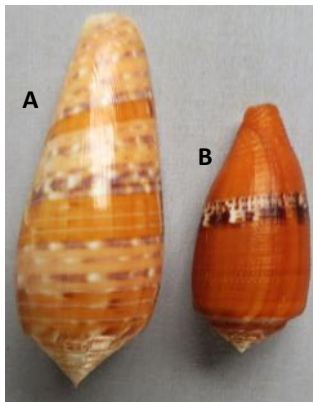
Donated By Friends of NCSC



91

Princely Volute, 2 shells
Cymbiola aulica (G.B. Sowerby I, 1825)
104 – 123

Donated By Friends of NCSC



92

Two Formerly Rare Cones
(A) Du Savel's Cone, *Conus dusaveli* (H. Adams, 1872) 69mm
(B) Scarlet Cone, *Conus coccineus*
Gmelin, 1791 46mm

Donated By Friends of NCSC



93

Scaly-ridged Venus
Circomphalus foliaceolamellosus
(Dillwyn, 1817)
62mm

Donated By Friends of NCSC



94

American Thorny Oyster, 2 shells
Spondylus americanus Hermann, 1781
75 – 88mm

Donated By Friends of NCSC



95

Axicornis Murex
Chicoreus axicornis (Lamarck, 1822)
w/op, 90mm

Donated By Friends of NCSC



96

Orchid Murex, 21 shells
Chicoreus orchidiflorus
(Skikama, 1973)
24 – 32mm

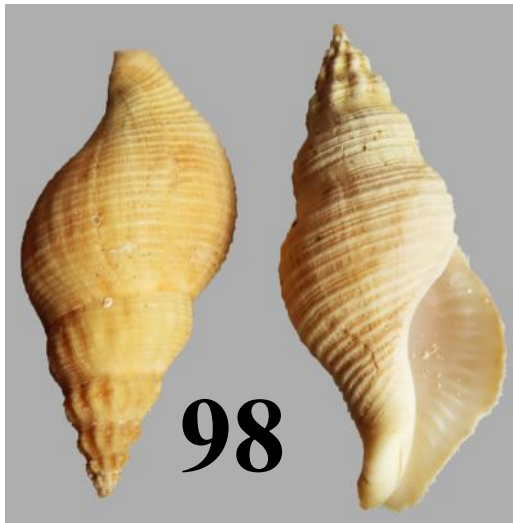
Donated By Friends of NCSC



97

Australian Horse Conch
Australaria australasia (Perry, 1811)
w/op, 132mm

Donated By Friends of NCSC



98

Drab Horse Conch, 2 shells
Lugubrilaria lugubris (A. Adams & Reeve, 1847)
37 – 41mm

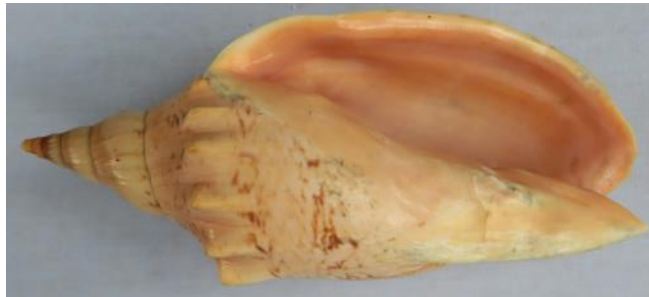
Donated By Friends of NCSC



99

Cameo Helmet
Cassis madagascariensis Lamarck, 1822
w/op, 255mm

Donated By Friends of NCSC



100 **Arabian Volute**
Alcithoe arabica (Gmelin, 1791)
182mm giant

Donated By Friends of NCSC



101 **Hill's Music Volute**
Voluta hilli (Petuch, 1987)
60mm

Donated By Friends of NCSC



102 **Hebrew Volute**
Voluta ebraea Linnaeus, 1758
w/op, 118mm

Donated By Friends of NCSC



103 **Maiderservant Volute**
Adelomelon ancilla ([Lightfoot], 1786)
172mm

Donated By Friends of NCSC



104 **Car License Tag**
Everett's North Carolina Shell Club #1

Donated by Nancy Long

105



Imperial Volute, 2 shells
Cymbiola imperialis ([Lightfoot], 1786)
145 - 170mm

Donated By Friends of NCSC



106

Madagascar Volute

Lyria tulearensis Cosel & Blöcher, 1977
w/op, 60mm

Donated By Friends of NCSC



107

Magnificent Volute

Cymbiola magnifica (Gerbauer, 1802)
180mm

Donated By Friends of NCSC



108

De Marco's Music Volute, 2 shells

Voluta demarcoi Olsson, 1965
62 – 71mm

Donated By Friends of NCSC



109

Gross's Volute

Volutoconus grossi (Iredale, 1927)
67mm

Donated By Friends of NCSC



110

Crowned Baler, 2 shells

Melo broderipi (Gray, 1833)
88 – 196mm

Donated By Friends of NCSC



A



A



B

112

(A) Princely Volute, 2 shells

Cymbiola aulica (G.B. Sowerby I, 1825)
94 – 131mm

(B) Bat Volute

Cymbiola vestpertilio (Linnaeus, 1758)
83mm

Donated By Friends of NCSC

111

Crowned Baler, 2 shells

Melo broderipi (Gray, 1833)
133 – 150mm

Donated By Friends of NCSC



113

Music Volute, 2 shells

Voluta polypleura Crosse, 1876
54 – 55mm

Donated By Friends of NCSC



114 **Silklime Volute**
Ericusa sericata Thornley, 1951
 132mm
 Donated By Friends of NCSC



115 **Olla Volute**
Cymbium olla (Linnaeus, 1758)
 92mm
 Donated By Friends of NCSC



116 **Victor Dan's Volute**
Lyria mallicki Ladd, 1975
 58mm
 Donated By Friends of NCSC



117 **Heavy Baler**
Melo umbilicatus Broderip, 1826
 293mm
 Donated By Mark Johnson



118

Shell Collection III, 11+ species

- (A) **Crown Conch**, *Melongena corona* (Gmelin, 1791) 67mm
- (B) **Feathered Cone**, *Conus pennaceus* Born, 1778 53mm
- (C) **Magus Cone**, *Conus magus* Linnaeus, 1758 2 shells, 42 – 65mm
- (D) **Miraculous Scallop**, *Mirapecten mirificus* (Reeve, 1835) 26mm
- (E) **Linda's Cone**, *Conaspira lindopowersae* (Petuch & Berschauer, 2017) 2 shells, 118mm
- (F) **Glorious Scallop**, *Mimachlamys sanguinea* (Linnaeus, 1758) 67mm
- (G) **Scarlet Cone**, *Conus coccineus* Gmelin, 1791 2 shells, 35 – 37mm
- (H) **West Central American Bonnet**, *Semicassis centriquadrata* (Valenciennes, 1832) 49mm
- (I) **Faurot's Bonnet**, *Semicassis faurotis* (Jousseume, 1888) 2 shells, 41 – 41mm
- (J) **Thrush Cowrie**, *Naria Turdus* (Lamarck, 1810) 33mm
- (K) **Babelomurex yumimaruma** Kosuge, 1985 2 shells, 18 – 20mm
- (L) **Mixed shells** 19 unidentified species

Donated By Friends of NCSC



119 **Baler Shell**
Melo amphora ([Lightfoot, 1786])
 365mm (~14.5")
 Donated By Mark Johnson



Page 2 Lot # 4



Page 16 Lot # 89



Page 7 Lot # 47



Page 3 Lot # 14



Page 8 Lot # 60



Page 3 Lot # 16



Page 14 Lot # 82



Page 17 Lot # 100



Page 11 Lot # 68



Page 4 Lot # 17