

PROTECTED WILDLIFE SPECIES OF NORTH CAROLINA



American alligator - threatened



Eastern hellbender - state special concern



Yellow lance - state endangered



N.C. Wildlife Resources Commission
www.ncwildlife.org
October 2017



The species listed in this document have been recognized as needing additional conservation by the North Carolina Wildlife Resources Commission under the State Endangered Species Act (G.S. 113-331 to 113-337) and by the U.S. Fish and Wildlife Service, under the Federal Endangered Species Act (16 U.S.C. 1531 to 1543). The N.C. General Statute refers to this list as the Protected Animal List.

This publication was produced by the N.C. Wildlife Resources Commission for informational purposes only. It reflects the most current information available in the **NCAC 101.0100 Endangered and Threatened Species** listings.

State-listed species are separated into three categories: North Carolina Endangered; North Carolina Threatened; and North Carolina Special Concern. State designations and their definitions are listed below:

North Carolina Endangered. Any native or once-native species of wild animal whose continued existence as a viable component of the State's fauna is determined by the Wildlife Resources Commission to be in jeopardy or any wild animal determined to be an "endangered species" pursuant to the Federal Endangered Species Act.

North Carolina Threatened. Any native or once-native species of wild animal that is likely to become an endangered species within the foreseeable future throughout all or a significant portion of its range or one that is designated as a threatened species pursuant to the Federal Endangered Species Act.

North Carolina Special Concern. Any species of wild animal native or once native to North Carolina that is determined by the Wildlife Resources Commission to require monitoring but that may be taken under regulations adopted under the provisions of Article 25.

Following each species state listing in this document are the species federal listing, as designated by the U.S. Fish and Wildlife Service, (if applicable). Federal designations and their definitions are listed below.

Federal Listing Designation Definitions

FE - Federally Listed as Endangered. Any native or once native species of wild animal whose continued existence as a viable component of the state's fauna is determined by the U.S. Fish and Wildlife Service to be in jeopardy or any wild animal determined to be an "endangered animal" pursuant to the Endangered Species Act.

FT - Federally Listed as Threatened. Any native or once native species of wild animal that is likely to become an endangered species within the foreseeable future throughout all, or significant, portions of its range, or one that is designated "threatened" pursuant to the Endangered Species Act.

To learn more about federally listed species in North Carolina, visit http://www.fws.gov/raleigh/es_tes.html

To learn more about the U.S. Fish and Wildlife Service's Endangered Species Program, visit <http://www.fws.gov/endangered/>

Produced by the N.C. Wildlife Resources Commission

Updated: October 2017

North Carolina Endangered Species

FE - Federally Listed as Endangered

Amphibians (3)

- Gopher frog (*Rana [=Lithobates] capito*)
- Ornate chorus frog (*Pseudacris ornata*)
- River frog (*Rana [=Lithobates] heckscheri*)

Birds (11)

- American peregrine falcon (*Falco peregrinus anatum*)
- Bachman's warbler (*Vermivora bachmanii*) FE
- Bewick's wren (*Thryomanes bewickii*)
- Common Tern (*Sterna hirundo*)
- Henslow's sparrow (*Ammodramus henslowii*)
- Ivory-billed woodpecker (*Campephilus principalis*) FE
- Kirtland's warbler (*Setophaga kirtlandii*) FE
- Piping plover (*Charadrius melodus circumcinctus*) FE
- Red cockaded woodpecker (*Picoides borealis*) FE
- Roseate tern (*Sterna dougallii dougallii*) FE
- Wayne's black-throated green warbler (*Setophaga virens waynei*)

Crustacea (1)

- Bennett's Mill cave water slater (*Caecidotea carolinensis*)

Fish (13)

- Atlantic Sturgeon (*Acipenser oxyrinchus oxyrinchus*) - when found in inland waters FE
- Blotchside logperch (*Percina burtoni*)
- Bridle shiner (*Notropis bifrenatus*)
- Cape Fear shiner (*Notropis mekistocholas*) FE
- Dusky darter (*Percina sciera*)
- Orangefin madtom (*Noturus gilberti*)
- Paddlefish (*Polyodon spathula*)
- Roanoke logperch (*Percina rex*) FE
- Robust redhorse (*Moxostoma robustum*)
- Rustyside sucker (*Thoburnia hamiltoni*)
- Sharpnose darter (*Percina oxyrhynchus*)
- Shortnose sturgeon (*Acipenser brevirostrum*) - when found in inland waters FE
- Stonecat (*Noturus flavus*)

Mammals (6)

- Carolina northern flying squirrel (*Glaucomys sabrinus coloratus*) FE



Gopher frog (Jeff Hall)



Carolina northern flying squirrel (Clifton Avery)



Henslow's Sparrow (John Caprenter)



Roanoke logperch (Chris Wood)



Gray bat (Katherine Caldwell)

North Carolina Endangered Species (continued)

FE - Federally Listed as Endangered

Eastern cougar (*Puma concolor*) FE
Gray bat (*Myotis grisescens*) FE
Indiana bat (*Myotis sodalis*) FE
Manatee (*Trichechus manatus*) - when found in inland waters FE
Virginia big-eared bat (*Corynorhinus townsendii virginianus*) FE

Mollusks (25)

Appalachian elktoe (*Alasmidonta raveneliana*) FE
Atlantic pigtoe (*Fusconaia masoni*)
Barrel floater (*Anodonta couperiana*)
Brook floater (*Alasmidonta varicosa*)
Carolina creekshell (*Villosa vaughaniana*)
Carolina heelsplitter (*Lasmigona decorata*) FE
Dwarf wedgemussel (*Alasmidonta heterodon*) FE
Fragile glyph (*Glyphyalinia clingmani*)
Green floater (*Lasmigona subviridis*)
Greenfield rams-horn (*Helisoma eucoosmium*)
James spinymussel (*Parvaspina collina*) FE
Knotty elimia (*Elimia christyi*)
Littlewing pearlymussel (*Pegias fabula*) FE
Longsolid (*Fusconaia subrotunda*)
Magnificent rams-horn (*Planorbella magnifica*)
Purple wartyback (*Cyclonaias tuberculata*)
Savannah lilliput (*Toxolasma pullus*)
Slippershell mussel (*Alasmidonta viridis*)
Tan riffleshell (*Epioblasma florentina walkeri*) FE
Tar River spinymussel (*Parvaspina steinstansana*) FE
Tennessee clubshell (*Pleurobema oviforme*)
Tennessee heelsplitter (*Lasmigona holstonia*)
Tennessee pigtoe (*Fusconaia barnesiana*)
Yellow lampmussel (*Lampsilis cariosa*)
Yellow lance (*Elliptio lanceolata*)

Reptiles (5)

Atlantic hawksbill sea turtle (*Eretmochelys imbricata imbricata*) FE
Eastern coral snake (*Micrurus fulvius fulvius*)
Eastern diamondback rattlesnake (*Crotalus adamanteus*)
Kemp's ridley sea turtle (*Lepidochelys kempii*) FE
Leatherback sea turtle (*Dermochelys coriacea*) FE



Longsolid (Dick Biggins/USFWS)



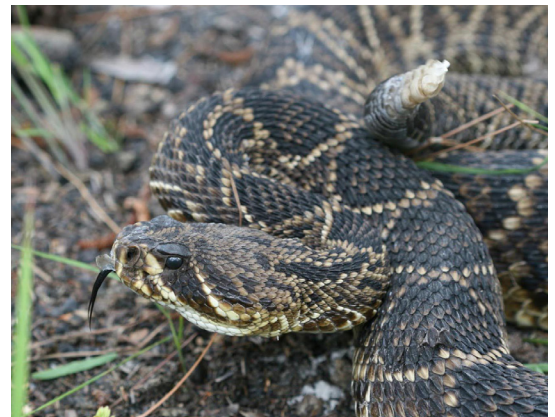
Virginia big-eared bat (USFWS)



Magnificent rams-horn (Andy Wood)



Coral snake (Jeff Hall)



Eastern diamondback rattlesnake (Jeff Hall)

North Carolina Threatened Species

FT - Federally Listed as Threatened

Amphibians (5)

- Green salamander (*Aneides aeneus*)
- Eastern tiger salamander (*Ambystoma tigrinum tigrinum*)
- Mabee's salamander (*Ambystoma mabeei*)
- Junaluska salamander (*Eurycea junaluska*)
- Wehrle's salamander (*Plethodon wehrlei*)

Birds (6)

- Bald eagle (*Haliaeetus leucocephalus*)
- Caspian tern (*Hydroprogne caspia*)
- Gull-billed tern (*Gelochelidon nilotica aranea*)
- Northern saw-whet owl (*Aegolius acadicus*)
- Red knot (*Calidris canutus rufa*) FT
- Piping plover (*Charadrius melodus melodus*) FT
- Wood stork (*Mycteria americana*) FT



Wood stork & chicks (Annika Anderssen)

Fish (14)

- Bigeye jumprock (*Moxostoma ariommum*)
- Carolina madtom (*Noturus furiosus*)
- Carolina pygmy sunfish (*Elassoma boehlkei*)
- Carolina redhorse (*Moxostoma* sp.)
- Least brook lamprey (*Lampetra aepyptera*)
- Logperch (*Percina caprodes*)
- Mimic shiner (*Notropis volucellus*)
- Rosyface chub (*Hybopsis rubrifrons*)
- Sharphead darter (*Etheostoma acuticeps*)
- Sicklefin redhorse (*Moxostoma* sp., Hiwassee River and Little Tennessee River and their tributaries)
- Spotfin chub (*Erimonax monachus*) FT
- Turquoise darter (*Etheostoma inscriptum*)
- Waccamaw darter (*Etheostoma perlongum*)
- Waccamaw silverside (*Menidia extensa*) FT



Tiger salamander (Jeff Hall)

Mammals (2)

- Eastern woodrat (*Neotoma floridana floridana*)
- Northern long-eared bat (*Myotis septentrionalis*) FT
- Rafinesque's big-eared bat (*Corynorhinus rafinesquii rafinesquii*)
- Red wolf (*Canis rufus*)



Sicklefin redhorse (NCWRC)

Mollusks (18)

- Alewife floater (*Anodonta implicata*)
- Big-tooth covert (*Fumonelix jonesiana*)
- Cape Fear threetooth (*Triodopsis soelneri*)



Green salamander (Lori Williams)

North Carolina Threatened Species (continued)

FT - Federally Listed as Threatened

Carolina fatmucket (*Lampsilis radiata conspicua*)
Creeper (*Strophitus undulatus*)
Eastern lampmussel (*Lampsilis radiata radiata*)
Eastern pondmussel (*Ligumia nasuta*)
Engraved covert (*Fumonelix orestes*)
Mountain creekshell (*Villosa vanuxemensis*)
Noonday globe (*Patera clarki nantahala*) FT
Notched rainbow (*Villosa constricta*)
Rainbow (*Villosa iris*)
Roan supercoil (*Paravitrea varidens*)
Sculpted supercoil (*Paravitrea ternaria*)
Smoky Mountain covert (*Inflectarius ferrissi*)
Tidewater mucket (*Leptodea ochracea*)
Triangle floater (*Alasmidonta undulata*)
Waccamaw ambersnail (*Catinella waccamawensis*)
Waccamaw fatmucket (*Lampsilis fullerkati*)
Waccamaw spike (*Elliptio waccamawensis*)



Rainbow (NCWRC)



American alligator (Jeff Hall)

Reptiles (6)

Bog turtle (*Glyptemys muhlenbergii*) FT
American alligator (*Alligator mississippiensis*) FT
Green sea turtle (*Chelonia mydas*) FT
Loggerhead sea turtle (*Caretta caretta*) FT
Northern pine snake (*Pituophis melanoleucus melanoleucus*)
Southern hognose snake (*Heterodon simus*)

North Carolina Special Concern Species

Amphibians (13)

Crevice salamander (*Plethodon longicrus*)
Dwarf black-bellied salamander (*Desmognathus folkertsi*)
Dwarf salamander (*Eurycea quadridigitata*)
Eastern hellbender (*Cryptobranchus alleganiensis alleganiensis*)
Four-toed salamander (*Hemidactylium scutatum*)
Gray treefrog (*Hyla versicolor*)
Longtail salamander (*Eurycea longicauda longicauda*)
Mole salamander (*Ambystoma talpoideum*)
Mountain chorus frog (*Pseudacris brachyphona*)
Mudpuppy (*Necturus maculosus*)
Neuse River waterdog (*Necturus lewisi*)



Gray treefrog (Jeff Hall)

North Carolina Special Concern Species (continued)

Southern zigzag salamander (*Plethodon ventralis*)
Weller's salamander (*Plethodon welleri*)

Birds (20)

American oystercatcher (*Haematopus palliatus*)
Bachman's sparrow (*Peucaea aestivalis*)
Barn Owl (*Tyto alba*)
Black-capped chickadee (*Poecile atricapillus*)
Black rail (*Laterallus jamaicensis*)
Black skimmer (*Rynchops niger*)
Brown creeper (*Certhia americana nigrescens*)
Cerulean warbler (*Setophaga cerulea*)
Glossy ibis (*Plegadis falcinellus*)
Golden-winged warbler (*Vermivora chrysoptera*)
Least bittern (*Ixobrychus exilis*)
Least tern (*Sternula antillarum*)
Little blue heron (*Egretta caerulea*)
Loggerhead shrike (*Lanius ludovicianus*)
Painted bunting (*Passerina ciris*)
Red crossbill (*Loxia curvirostra*)
Snowy egret (*Egretta thula*)
Tricolored heron (*Egretta tricolor*)
Vesper sparrow (*Pooecetes gramineus*)
Wilson's plover (*Charadrius wilsonia*)



Cerulean warbler (John Carpenter)



Loggerhead shrike (John Carpenter)

Crustacea (11)

Broad River spiny crayfish (*Cambarus spicatus*)
Carolina skistodiaptomus (*Skistodiaptomus carolinensis*)
Carolina well diacyclops (*Diacyclops jeannelli putei*)
Chowanoke crayfish (*Orconectes virginianensis*)
Graceful clam shrimp (*Lynceus gracilicornis*)
Greensboro burrowing crayfish (*Cambarus catagius*)
Hiwassee headwaters crayfish (*Cambarus parrishi*)
Little Tennessee River crayfish (*Cambarus georgiae*)
North Carolina spiny crayfish (*Orconectes carolinensis*)
Oconee stream crayfish (*Cambarus chaugaensis*)
Waccamaw crayfish (*Procambarus braswelli*)



Chowanoke crayfish (Tyler Black)



Barn owl (NCWRC)

Fish (30)

American brook lamprey (*Lethenteron appendix*)
Atlantic Highfin Carpsucker (*Carpoides* sp., Cape Fear River and its tributaries)
Banded sculpin (*Cottus carolinae*)
Blackbanded darter (*Percina nigrofasciata*)

North Carolina Special Concern Species (continued)

Bluefin killifish (*Lucania goodei*)
Blue Ridge sculpin (*Cottus caeruleomentum*)
Blueside darter (*Etheostoma jessiae*)
Broadtail madtom (*Noturus* sp., Lumber River and Cape Fear River and their tributaries)
Carolina darter (*Etheostoma collis*)
Cutlip minnow (*Exoglossum maxillingua*)
Freshwater drum (*Aplodinotus grunniens*, French Broad River)
Kanawha minnow (*Phenacobius teretulus*)
Lake sturgeon (*Acipenser fulvescens*)
Least killifish (*Heterandria formosa*)
Longhead darter (*Percina macrocephala*)
Mooneye (*Hiodon tergisus*)
Mountain madtom (*Noturus eleutherus*)
Ohio lamprey (*Ichthyomyzon bdellium*)
Olive darter (*Percina squamata*)
Pinewoods darter (*Etheostoma mariae*)
River carpsucker (*Carpionodes carpio*)
Sandhills chub (*Semotilus lumbee*)
Smoky dace (*Clinostomus* sp., Little Tennessee River and tributaries)
Striped shiner (*Luxilus chrysocephalus*)
Tennessee snubnose darter (*Etheostoma simoterum*)
Thinlip chub (*Cyprinella* sp., Lumber River and Cape Fear River and their tributaries)
Waccamaw killifish (*Fundulus waccamensis*)
Wounded darter (*Etheostoma vulneratum*)
Yellowfin shiner (*Notropis lutipinnis*, Savannah River and its tributaries)



Broadtail madtom (NCWRC)

Mammals (11)

Allegheny woodrat (*Neotoma magister*)
Buxton Woods white-footed mouse (*Peromyscus leucopus buxtoni*)
Coleman's oldfield mouse (*Peromyscus polionotus colemani*)
Eastern big-eared bat (*Corynorhinus rafinesquii macrotis*)
Eastern small-footed bat (*Myotis leibii leibii*)
Florida yellow bat (*Lasiurus intermedius floridanus*)
Pungo white-footed mouse (*Peromyscus leucopus easti*)
Southeastern bat (*Myotis austroriparius*)
Southern rock vole (*Microtus chrotorrhinus carolinensis*)
Star-nosed mole (*Condylura cristata parva*)



Eastern small-footed bat (Melissa McGaw)

Mollusks (32)

Appalachian gloss (*Zonitoides patuloides*)
Bidentate dome (*Ventridens coelaxis*)
Black mantleslug (*Pallifera hemphilli*)

North Carolina Special Concern Species (continued)

Blackwater ancyliid (*Ferrissia hendersoni*)
Blue-foot lancetooth (*Haplotrema kendeighi*)
Cape Fear spike (*Elliptio marsupiobesa*)
Clingman covert (*Fumonelix wheatleyi clingmanicus*)
Dark glyph (*Glyphyalinia junaluskana*)
Dwarf proud globe (*Patera clarki clarki*)
Dwarf threetooth (*Triodopsis fulciden*)
Fringed coil (*Helicodiscus fimbriatus*)
Glossy supercoil (*Paravitrea placentula*)
Great Smoky slitmouth (*Stenotrema depilatum*)
High mountain supercoil (*Paravitrea andrewsae*)
Honey glyph (*Glyphyalinia vanattai*)
Lamellate supercoil (*Paravitrea lamellidens*)
Mirey Ridge supercoil (*Paravitrea clappi*)
Open supercoil (*Paravitrea umbilicaris*)
Pink glyph (*Glyphyalinia pentadelphia*)
Pod lance (*Elliptio folliculata*)
Queen crater (*Appalachina chilhoweensis*)
Ramp Cove supercoil (*Paravitrea lacteodens*)
Ridged lioplax (*Lioplax subcarinata*)
Roanoke slabshell (*Elliptio roanokensis*)
Saw-tooth disc (*Discus bryanti*)
Seep mudalia (*Leptoxis dilatata*)
Spike (*Elliptio dilatata*)
Spiral coil (*Helicodiscus bonamicus*)
Velvet covert (*Inflectarius subpalliatius*)
Waccamaw amnicola (*Amnicola* sp.)
Waccamaw siltsnail (*Cincinnatia* sp.)
Wavy-rayed lampmussel (*Lampsilis fasciola*)

Reptiles (12)

Carolina pigmy rattlesnake (*Sistrurus miliarius miliarius*)
Carolina swamp snake (*Seminatrix pygaea paludis*)
Carolina watersnake (*Nerodia sipedon williamengelsi*)
Cumberland slider (*Trachemys scripta troostii*)
Eastern chicken turtle (*Deirochelys reticularia reticularia*)
Diamondback terrapin (*Malaclemys terrapin*)
Eastern smooth green snake (*Opheodrys vernalis vernalis*)
Eastern spiny softshell (*Apalone spinifera spinifera*)
Mimic glass lizard (*Ophisaurus mimicus*)
Outer Banks kingsnake (*Lampropeltis getula sticticeps*)
Stripeneck musk turtle (*Sternotherus minor peltifer*)
Timber rattlesnake (*Crotalus horridus*)



Cumberland slider (Gabrielle Graeter)



Carolina swamp snake (Jeff Hall)



Wavy-rayed lampmussel (NCWRC)



Timber rattlesnake (Jeff Hall)



Diamondback terrapin (Andrew Grosse)