



# Exotic *Caulerpa*: how to spot it and report it



**SEE WEED, CHUCK IT  
STRAIGHT BACK**



A Mana Whenua & Biosecurity New Zealand Partnership

## What is exotic *Caulerpa*?

- It is a non-native, fast-growing seaweed that can break into pieces and spread rapidly in favourable conditions.
- It has potential to form vast, dense beds that create a risk to the ecosystem, commercial and recreational fishing, diving and other leisure and cultural activities on the sea.

## Where is it?

It has been found in Aotea Great Barrier Island and Ahuahu Great Mercury Island. Let's all do what we can to stop it spreading further.

**Check your anchors, chains and fishing or diving gear.**

**Some simple actions by boaties, divers and fishers are crucial to keeping *Caulerpa* where it is.**

- Anchors and chains pose the greatest risk.
- If you are on the water and you see weed on your gear, anchor or chain, chuck it straight back.
- If you use an electric winch – walk forward and check in the anchor well, before you move on.
- If you find something later when you're in a new location, don't put it in the sea. Put it in a plastic bag or bucket and put it in the rubbish back on land.

*Low density exotic Caulerpa.*



*High density exotic Caulerpa.*



**Tell us if you think you spot *Caulerpa* somewhere new**

- Take a photo or video close up (about 1 metre away).
- Take note of the location.
- Do not touch it or move it.
- Call the Pests and disease hotline on 0800 80 99 66.

## How to identify exotic *Caulerpa*

Exotic *Caulerpa* has fronds or leaves up to 10cm long that rise from long runners or roots known as stolons.

It is found growing from the tideline to 35 metres deep, on both hard surfaces (reefs) and in sandy/muddy sediment. After stormy weather it can wash up on the beach.



For more information:  
[www.biosecurity.govt.nz/caulerpa](http://www.biosecurity.govt.nz/caulerpa)





*Exotic Caulerpa.*



*Exotic Caulerpa washed up on the beach.*

## **Native *Caulerpa***

There are two kinds of native *Caulerpa* that are not invasive. We want them in New Zealand. They have fern-like leaves and they look very different to exotic *Caulerpa*. They are pictured below.

*Caulerpa articulata*

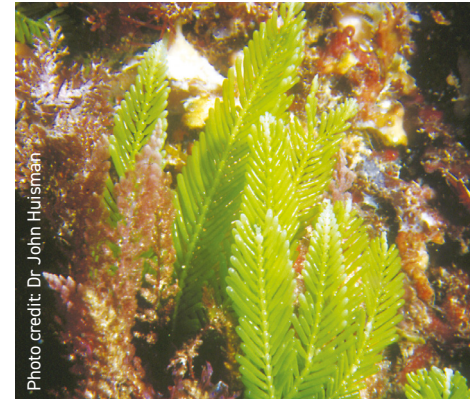


Photo credit: Dr. John Huisman

*Caulerpa brownii* or *Sea Rimu*



## **Controlled Area Notices**

Anchoring and fishing restrictions are in place on three harbours in Aotea and one harbour in Ahuahu. Find out more about this below, and check overleaf to see detailed maps of the controlled areas.

### **Current restrictions – Aotea**

- Only hand line or rod and line fishing from the beach or wharf/jetty are permitted in Okupu Blind Bay, Whangaparapara Harbour and Tryphena Harbour.
- Anchoring is not permitted in any of the Controlled Areas except under a permit issued only in exceptional circumstances – for example, for residents relying on a vessel for access.

### **Current restrictions – Ahuahu**

- No fishing is allowed in the Controlled Area from Maunganui Point to Ahikopua Point.
- Anchoring is permitted in this area but boaties are asked to check their anchor and chain for any seaweed and put it back in the same waters before moving on.



**ZONE A**  
**Controlled Area Tryphena Harbour, Great Barrier Island**

- Controlled Area Extent Point
- Outer Boundary
- Controlled Area



Date: 13/08/2021  
Produced by: Spatial Intelligence  
Reference: r210181  
Coordinate System: WGS 1984 Mercator 41

Point	Latitude	Longitude
A	36.3316 °S	175.4743 °E
B	36.3096 °S	175.4327 °E

Data Attribution:  
This map uses data sourced from LINZ under CC-BY.

Disclaimer: This map and all information accompanying it (the "Map") is intended to be used as a guide only, in conjunction with other data sources and methods, and should only be used for the purpose for which it was developed. The information shown in this Map is based on a summary of data obtained from various sources. While all reasonable measures have been taken to ensure the accuracy of the Map, MPI, (a) gives no warranty or representation in relation to the accuracy, completeness, reliability or fitness for purpose of the Map; and (b) accepts no liability whatsoever in relation to any loss, damage or other costs relating to any person's use of the Map, including but not limited to any complications, derivative works or modifications of the Map. Crown copyright ©. This map is subject to Crown copyright administered by Ministry for Primary Industries (MPI).



**ZONE B**  
**Controlled Area Blind Bay, Great Barrier Island**

- Controlled Area Extent Point
- Outer Boundary
- Controlled Area



Date: 13/08/2021  
Produced by: Spatial Intelligence  
Reference: r210181  
Coordinate System: WGS 1984 Mercator 41

Point	Latitude	Longitude
A	36.2681 °S	175.4009 °E
B	36.3096 °S	175.4327 °E

Data Attribution:  
This map uses data sourced from LINZ under CC-BY.

Disclaimer: This map and all information accompanying it (the "Map") is intended to be used as a guide only, in conjunction with other data sources and methods, and should only be used for the purpose for which it was developed. The information shown in this Map is based on a summary of data obtained from various sources. While all reasonable measures have been taken to ensure the accuracy of the Map, MPI, (a) gives no warranty or representation in relation to the accuracy, completeness, reliability or fitness for purpose of the Map; and (b) accepts no liability whatsoever in relation to any loss, damage or other costs relating to any person's use of the Map, including but not limited to any complications, derivative works or modifications of the Map. Crown copyright ©. This map is subject to Crown copyright administered by Ministry for Primary Industries (MPI).



Point	Latitude	Longitude
A	36.2550 °S	175.3863 °E
B	36.2606 °S	175.3978 °E

### Proposed Controlled Area, Whangaparapara Harbour, Great Barrier Island

Date: 13/08/2021  
Produced by: Spatial Intelligence  
Reference: r210181  
Coordinate System: WGS 1984 Mercator 41

- Controlled Area Extent Point
- Outer Boundary
- Controlled Area



Data Attribution:  
This map uses data sourced from LINZ under CC-BY.



### Controlled Area Ahuahu Great Mercury Island

Produced by: Spatial Intelligence  
Reference: r220013  
Coordinate System: NZTM

- Controlled Area
- Outer Boundary
- Controlled Area Extent Point



Point	Latitude	Longitude
A	36° 36.183' S	175° 45.579' E
B	36° 38.013' S	175° 46.494' E

Data Attribution:  
This map uses data sourced from LINZ under CC-BY and Esri.

Disclaimer: This map and all information accompanying it (the "Map") is intended to be used as a guide only, in conjunction with other data sources and methods, and should only be used for the purposes for which it was developed. The information shown in this Map is based on a summary of data obtained from various sources. While all reasonable measures have been taken to ensure the accuracy, reliability, and timeliness of the information shown in the Map, and (b) accepts no liability whatsoever in relation to any loss, damage or other consequences resulting from any person's use of the Map, including but not limited to any compilers, derivatives, or modifications of the Map. Crown copyright administered by Ministry for Primary Industries (MPI). This map is subject to Crown copyright administered by Ministry for Primary Industries (MPI).

Disclaimer: This map and all information accompanying it (the "Map") is intended to be used as a guide only, in conjunction with other data sources and methods, and should only be used for the purposes for which it was developed. The information shown in this Map is based on a summary of data obtained from various sources. While all reasonable measures have been taken to ensure the accuracy, reliability, and timeliness of the information shown in the Map, and (b) accepts no liability whatsoever in relation to any loss, damage or other consequences resulting from any person's use of the Map, including but not limited to any compilers, derivatives, or modifications of the Map. Crown copyright administered by Ministry for Primary Industries (MPI). This map is subject to Crown copyright administered by Ministry for Primary Industries (MPI).