



Nikon's advanced technology makes taking great pictures easy

In-Camera features that make your pictures look great!

Nikon In-Camera Red-Eye Fix™:

This in-camera feature automatically fixes most typical occurrences of red-eye. You may never see red-eye again.



Nikon D-Lighting:

In playback mode, D-Lighting will compensate for underexposed areas or insufficient flash without affecting properly exposed areas.



In-Camera Cropping:

This feature allows you to crop out the part of the image you don't want and just keep the part you like.



Date and Time Imprinting:

Documenting the exact date and or time a photo is taken is as easy as a push of a button.



Voice Memo Function:

Records up to 20 seconds of sound that can then be attached to an image.

Framing Guides

display framing guides on the LCD monitor in order to achieve an ideal composition



Best Shot Selector

Camera takes a series of photos and automatically selects the one with sharpest focus



Saturation Mode

Control color saturation



Noise Reduction Mode

Minimize digital artifacts in long exposures



White Balance Bracketing

Ensure proper color balance



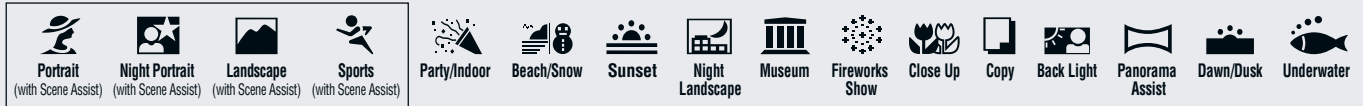
Blur Warning

Warns when image is blurry



Useful automatic features do all the thinking for you

Versatile 16 Scene Modes



These COOLPIX digital cameras features 16 specially programmed modes to automatically handle focus, exposure, white balance and other adjustments that help you take great pictures at the press of a button. The **Underwater Scene Mode** is the newest and allows you to shoot underwater with the (optional) WP-CP4 underwater housing. Another great new function to be used in the Portrait Mode is **Face Priority AF** which automatically finds the subject's face and focuses on it. 4 of the 16 scene modes come with **Scene Assist** which offer a selection of easy framing assist options, to help you compose your pictures with the assistance of framing guides displayed in the monitor. Here is how it works:

1

Select mode on Mode Dial

2

Scroll up or down to choose a composition type and set

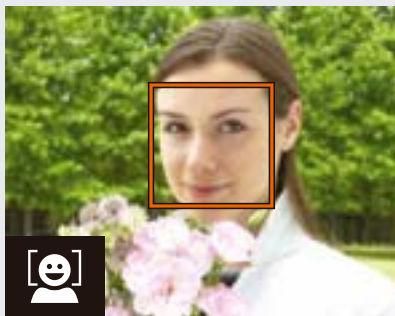
3

Position subject in framing guide and shoot

NEW!

Face Priority AF:

All New Face Priority AF (in Portrait Scene) mode will automatically find the subjects face and focus on that. This ensures a great portrait every time.



NEW!



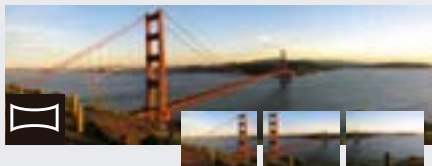
Underwater
Produces more attractive results when shooting scenes underwater with optional WP-CP4 underwater housing.



Close Up
Shoot as close as 1.6" from your subject.



Landscape
Emphasizing depth-of-field, this mode captures distant scenes sharply and clearly, for postcard-like landscape pictures.



Panorama Assist
Allows you to take several side-by-side images, all at the same exposure and white balance setting, then combine them later using the "Panorama Maker™" photo editing software (supplied) to create spectacular wide-vista photos.

Autofocus/Metering Options:

Choose the **autofocus option** you want to use.

Focus virtually anywhere within frame with these autofocusing options:

- 99 Point Autofocus
- 5-Area Autofocus
- Center Autofocus



99 Point Autofocus

Pick the **metering option** that is right for your shot.



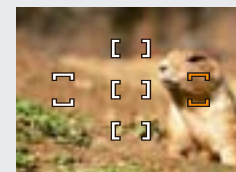
Matrix Metering
optimal exposure is measured by comparing 256 areas of the frame.



Spot metering
optimal exposure is measured by using 1/32 from the center of frame.



Center Weighted Metering
optimal exposure is measured by using 1/4 from the center of frame.

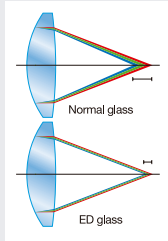


Spot AF Area
exposure is linked to active focus area.

High quality lenses deliver high quality pictures

3x Optical Zoom-Nikkor Lens with your pro-quality ED glass optics:

The 3x Zoom Nikkor Lens gives you the power of a **38-114mm** (35mm equiv.) lens, while Macro capability lets you get as close as 1.6 in. This combination is supported by Nikon's world-renowned optical technology, with pro-quality **ED glass** delivering crisp, clear images while minimizing chromatic aberration — all of which helps realize the full potential of our high resolution 5 and 7 megapixel CCD's.



The COOLPIX 5900 and 7900's exclusive image processing technology takes true-to-life images a step closer to reality. A **256-segment Matrix Metering** system enables optimal exposures in even the most challenging lighting situations.



3x Optical Zoom-Nikkor lens
plus 4x digital zoom equals 12x zoom range

Shoot longer and more often

NEW!

Longer Battery Life and more Internal Memory:



Now, shoot up to
270 photos
with the same battery

These new Nikon Coolpix Digital cameras have been designed so you can shoot longer and more often by increasing battery life and adding more internal memory. **13.5 MB of internal memory** lets you shoot even more without an SD card (sold separately). Nikon has made these cameras more efficient than ever giving you **longer battery life**. On one charge of the included rechargeable lithium-ion battery EN-EL5 you can shoot up to 220 shots with the 7900 and up to 270 shots with the 5900.

Big, Bright 2.0" LCD makes shooting and sharing images easier

NEW!

Big 2.0" LCD screen and newly designed interface with Help Function:

With the new **oversized 2" LCD screen** you won't miss much but Nikon did not stop there when designing these cameras. A **new interface** has been designed that can be viewed as icons or as a list. If you get confused just hit the **Help Button**. It will explain the function in the main menu.

View menu as a list



or as icons



If you have any questions
just hit the Help Button



Your choice of shooting modes

Shoot a Quicktime™ movie:



Shoot a movie with sound:

In Movie Mode you can shoot a Quicktime Movie with sound at 30 frames per second.

5 Color Shooting Options:

Creative Shooting Color Options allow you to select from standard color, vivid color, black & white, sepia and cool modes



Standard Color

Vivid Color

Black & White

Sepia

Cool

Share your photos with the world

Print directly to your printer, show on your TV or upload to the web:

Print directly from your camera

You can send images directly to print, without the need of a PC, when using PictBridge and USB Direct Print compatible printers.

Hook directly to your TV

Show friends and family the results on a grand scale

One Touch Upload to your computer

Just touch the TRANSFER button once to upload images to your computer using the supplied PictureProject software



Go even further with your Coolpix 5900,7900

Great Accessories:



WP-CP4
Underwater housing



Leather Case and
EN-EL5 rechargeable battery kit



Leather Case



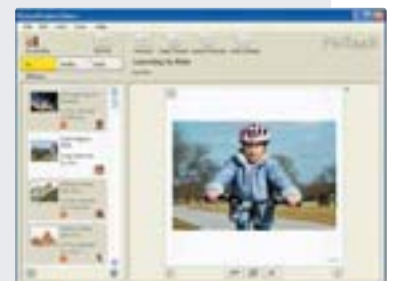
AC Adapter

PictureProject In Touch: Photo Sharing Made Easy

PictureProject In Touch software, included with PictureProject, lets you share your photos with friends and family quickly and easily—without going to a website or attaching them to e-mails:

- Send and receive photo albums to anyone with an Internet connection.
- Enjoy full-screen slide shows—with just one mouse click.
- Automatically receive albums from trusted senders.
- Add a message to the photos you send.

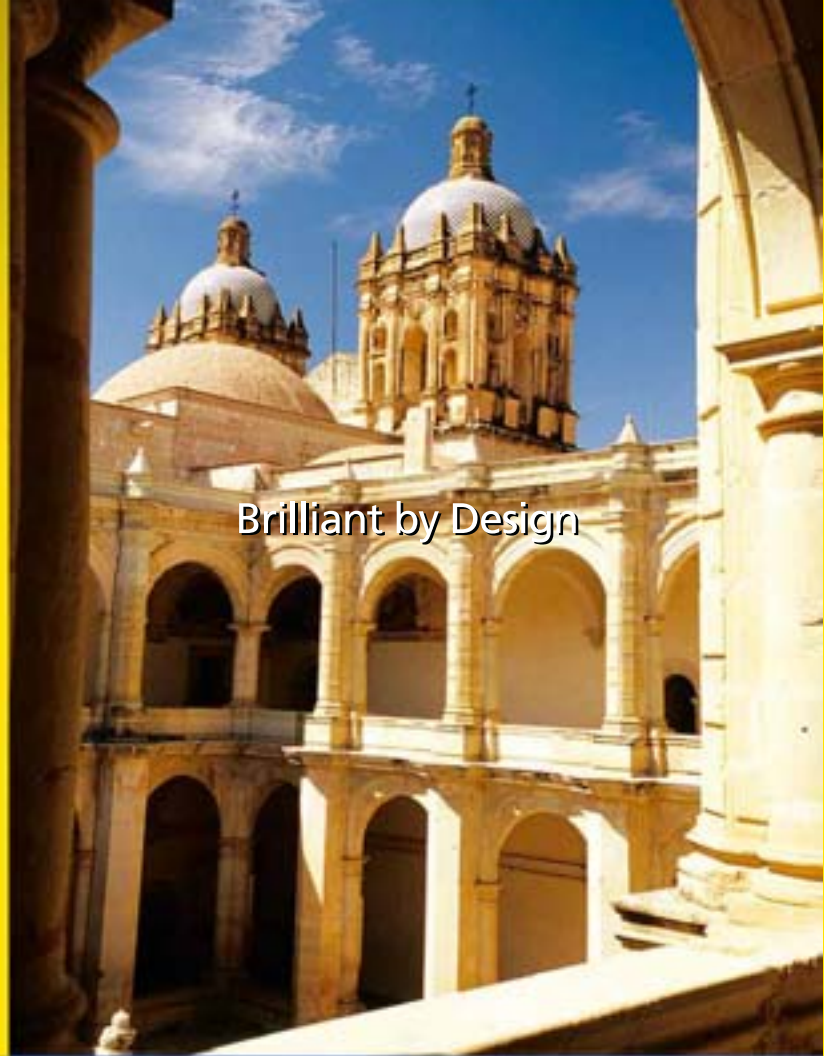
The people you send photos to can download the PictureProject In Touch software—it's free. Then they'll be able to enjoy your photos just by looking in the application's in-box. PictureProject In Touch is simple to use, even for inexperienced computer users, and it's compatible with both Windows and Mac OS X operating systems (see PictureProject requirements).



COOLPIX 5900



5.1 Effective Megapixel Digital Camera

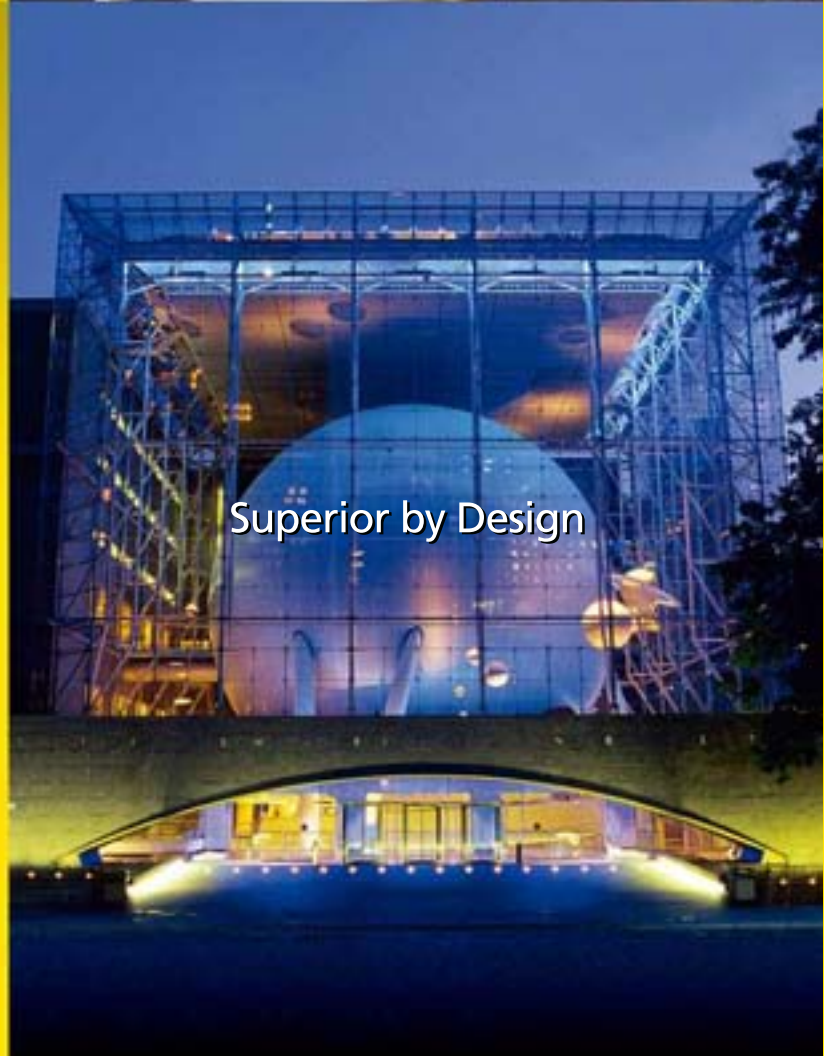


Brilliant by Design

COOLPIX 7900



7.1 Effective Megapixel Digital Camera

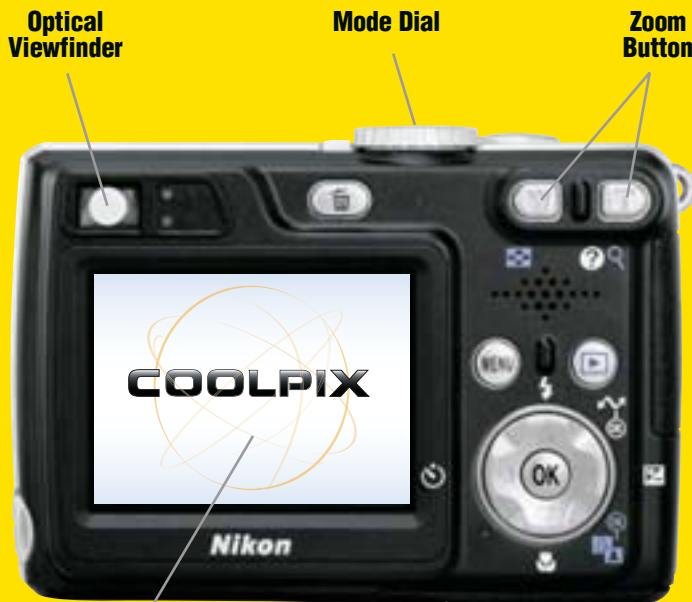


Superior by Design

The compact digital cameras that have thought of everything.



Actual size
3.5"W x 2.4"H x 1.4"D (only 5.3 oz.)



Big, Bright 2" LCD Monitor for high visibility in daylight

13.5 MB of internal memory makes it possible to take pictures even without an SD memory card. The Coolpix 5900 & 7900 also makes it easy to copy recorded shots between media as you like.



(SD card sold separately)

Key Features and Benefits

- **Coolpix 5900/5.1 Effective Megapixels, Coolpix 7900/7.1 Effective Megapixels** for stunning prints up to 16 x 20 inches and beyond
- **High Quality 3x Optical Zoom-Nikkor ED Glass Lens 38-114mm** (35mm equivalent) for incredibly sharp, clear images plus a 4x digital zoom for a total zoom of 12x
- **NEW! Big, Bright 2.0 inch LCD** for easy viewing and playback of pictures
- **Compact Aluminum Body** is small enough to take anywhere
- **NEW! Exclusive Face Priority AF** makes taking incredible portraits easy
- **Exclusive Nikon In-Camera Red-Eye Fix™** automatically fixes most typical instances of red-eye in the camera. You may never see red-eyes again!
- **Nikon's D-Lighting** automatically brightens dark images in playback mode
- **Long Battery Life** lets you shoot up to 220 shots with the 7900 and up to 270 shots with the 5900 on a single charge with the included rechargeable Lithium-ion battery
- **16 Scene Modes** (Portrait, Panorama Assist, Landscape, etc), 4 with Scene Assist to guide you in taking better pictures, automatically. **NEW! Underwater Mode** (for use with optional WP-CP4 underwater housing)
- **NEW! Help Button** instantly displays an explanation for all functions on the main menu
- **Shoot close-ups 1.6 inches** from your subject
- **Movie Mode at 30 fps with sound takes**, the length is only limited by the capacity of your SD card
- **13.5 MB of Internal Memory** take pictures immediately
- **Print directly to a printer** by connecting the Coolpix 5900, 7900 to a PictBridge-compatible printer

Everything you need to get started:

- Wrist Strap • USB Cable • Audio Video Cable
- EN-EL5 Li-ion Rechargeable Battery
- MH-53 Battery Charger
- PictureProject CD-ROM



Nikon Coolpix® 5900 & 7900

Digital Camera Specifications

Type of camera	Digital camera E7900/E5900
Effective pixels	7.1million (E7900)/ 5.1million (E5900)
CCD	1/1.8-inch type
Image size (pixels)	E7900: 7M (3072x2304), 5M (2592x1944), 3M (2048x1536), 2M (1600x1200), PC (1024x768), TV (640x480) / E5900: 5M (2592x1944), 3M (2048x1536), 2M (1600x1200), PC (1024x768), TV (640x480)
Lens	3x Zoom-Nikkor; 7.8-23.4mm [35mm (135) format equivalent to 38-114mm]; f/2.8-4.9; 7 elements in 6 groups, Digital zoom: up to 4x
Autofocus	Contrast-detect TTL AF
Focus range	12 in. (30cm) to infinity (∞), 1.6 in. (4cm) to infinity (∞) in Macro Mode
Focus area	Auto (five-area selection), Manual (99-area selection) and Center-focus area selection available
LCD monitor	2.0-inch type, 115,000-dot Amorphous silicon TFT LCD monitor with brightness adjustment; frame coverage: approx. 100%
Storage media	SD memory card (optional), Internal memory equipped
Shooting modes	Auto, Scene Assist (Portrait, Landscape, Sports, Night portrait), Scene (Party/Indoor, Beach/Snow, Sunset, Dusk/Dawn, Night landscape, Close up, Museum, Fireworks show, Copy, Back light, Panorama assist, Underwater), BSS (Best Shot Selector), Image adjustment, Image sharpening, Saturation control, Auto exposure bracketing, White Balance (Auto, Preset and 7 manual modes), WB bracketing, Digital zoom (max.4x), Noise reduction, Self-timer (3 sec., 10 sec)
Movies with sound	TV movie (640x480) at 15fps or 30fps, Small size (320x240) at 30fps, Smaller size (160x120) at 30fps, Electronic VR (Vibration Reduction) available (E7900 only)
Capture modes	1) Single, 2) Continuous (E7900 : 1.7fps / E5900 : 2.0fps), 3) 5-shot buffer, 4) Multi-shot 16 (available only at 5M image size)
Number of frames	E7900 (7M): (w/ Internal memory): Fine approx. 4, Normal approx. 7, Basic approx. 15 E5900 (5M): (w/ Internal memory): Fine approx. 5, Normal approx. 10, Basic approx. 21
Shutter speed	4-1/2,000 s
Aperture range	Two-step (f/2.8 and f/4.9 [wide], f/8.2 and f/4.9 [telephoto])

Built-in Speedlight	Range: 1-14.8 ft./ 0.3-4.5m (W), 1-11.5 ft./ 0.3-3.5m (T); Flash modes: Auto, Red-eye Reduction Auto (In-Camera Red-Eye Fix), Anytime Flash, Flash Cancel and Slow sync.
Interface	USB, Audio Video output (NTSC/PAL)
Supported languages	German/English/Spanish/French/Italian/Dutch/Swedish/Japanese/Simplified Chinese/Traditional Chinese/Korean selectable in menu display
Power requirements	One Rechargeable lithium-ion EN-EL5 (supplied), one CP1 lithium battery (optional), AC adapter EH-62A (optional)
Dimensions (W x H x D)	Approx. 3.5 x 2.4 x 1.4 in. (88 x 60 x 36.5mm)
Weight	Approx. 150g (5.3 oz.) (without battery and memory card)
Supplied Accessories*	Strap, USB cable, Audio Video cable, Rechargeable Li-ion Battery EN-EL5, Battery charger MH-61, PictureProject CD-ROM <i>*Supplied accessories may differ by country or area.</i>
Optional Accessories	AC adapter EH-62A, Soft case, Waterproof Case WP-CP4** and SD memory card <i>** Not available in some countries or areas.</i>
PictureProject System requirements for Windows	<i>OS:</i> Windows® XP Home Edition / Professional, Windows® 2000 Professional, Windows® Me, Windows® 98SE pre-installed models <i>RAM:</i> 64MB (128MB with RAW images) or more recommended <i>Hard disk:</i> 60MB required for installation <i>Display:</i> 800 x 600 with 16-bit color (full color recommended) <i>Others:</i> CD-ROM drive required for installation
PictureProject System requirements for Macintosh	<i>OS:</i> Mac® OS X (10.1.5 or later) <i>RAM:</i> 64MB (128MB with RAW images) or more recommended <i>Hard disk:</i> 60MB required for installation <i>Display:</i> 800 x 600 with 16-bit color (full color recommended) <i>Others:</i> CD-ROM drive required for installation
Product Number:	<i>5900:</i> 25526 UPC code: 018208255269 <i>7900:</i> 25527 UPC code: 018208255276



All products indicated by trademark symbols are trademarked and/or registered by their respective companies. Specifications and equipment are subject to change without any notice or obligation on the part of the manufacturer. 2/05

©2005 NIKON INC.

