



NPFC



NPFC VME taxa identification guide
Western North Pacific Ocean

NPFC. VME taxa identification guide: Western North Pacific Ocean. Tokyo, NPFC. 2020. 88 pages.

For feedback, questions and requests for use of photos contact:

NPFC Secretariat secretariat@npfc.int

The guide may be copied, downloaded and printed for private study, research and teaching process, or for use in non-commercial products or services, provided that appropriate acknowledgement of NPFC as the source and copyright holder is given.

©NPFC 2020

INTRODUCTION

This is a pictorial identification guide for corals found on the Emperor Seamounts in the western North Pacific. It was written for at-sea identification by fishery observers, fishers, scientific technicians and others who may not be familiar with corals. The guide is comprised of four major groups of corals: *Alcyonacea*, *Gorgonacea*, *Antipatharia* and *Scleractinia*. This is a first edition and it will be improved on the basis of feedback from observers and also as more information on corals becomes available.

GUIDE STRUCTURE

There are separate sheets for each of the main taxonomic groups. They include key morphological features and other information to allow identification:

- Heading with taxonomic category
- Scientific name
- A brief information about physical description, size, habitat and depth
- Pictures of specimens with scales and color range
- Codes from ITIS TSN: <http://www.itis.gov/> and WoRMS: <http://www.marinespecies.org/>

Coral Morphology Categories

Soft Corals (Alcyonacea)

Soft-bodied corals that are usually fleshy and flexible. Colonies are either erect or encrusting. Branches of arborescent species may be loose or form tight clusters.

Gorgonians (Gorgonacea)

All gorgonians are colonial, and the colonies may be bushy or uniplanar and quite large. On deck, specimens resemble small trees, fans, or bushes. Polyps are generally small, and most are retractile, with a few exceptions.

Black Corals (Antipatharia)











Large branching or whip-like corals with firm small polyps. Skeleton, once exposed, is black or brown and may be covered in thorns.

Hard Corals (Scleractinia)

Solitary or colonial corals with a hard, calcareous skeleton. Solitary forms may resemble a cup, while colonial species may form a hard, branching network.

Table of Contents

Alcyonacea

	Page		Page
	Clavuria 1		Anthomastus 6
	Pachyclavularia 2		Unidentified Nephtheidae ... 7
	Pseudocladochonus 3		Nidalia 8
	Telesto 4		Chironephthya 9
	Eleutherobia 5		Unidentified Paralcyoniidae · 10

Gorgonacea



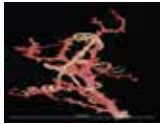
Anthothela 11



Paragorgia(A) 12



Paragorgia(B) 13



Hemicorallium abyssale 14



Hemicorallium laauense 15



Hemicorallium sulcatum 16



Hemicorallium cf. regale 17



Hemicorallium 18



Pleurocorallium cf. pusillum 19



Keroeides 20



Acanthogorgia 21



Acalycigorgia 22



Astrogorgia 23



Bebryce 24



Calicogorgia 25



Euplexaura 26



Echinomuricea 27



Lepidomuricea 28



Paracis 29



Muriceides 30



Paramuricea 31



Placogorgia 32



Villogorgia 33



Leptogorgia 34



Chrysogorgia 35



Metallogorgia 36



Iridogorgia 37



Primnoa 38



Callogorgia 39



Thouarella 40



Calyptrophora 41



Arthrogorgia 42



Narella 43



Candidella 44



Fanellia 45



Fannyella 46



Parastenella 47



Keratoisis 48



Acanella 49



Isidella 50



Lepidisis 51



Dendrobathypathes 55

Antipatharia



Lillipathes 56



Antipathes densa 52



Stauropathes 57



Stichopathes 53



Taxipathes 58



Bathypathes 54



Leiopathes 59

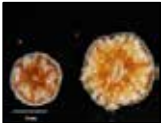


Cladopathes 60



Trissopathes 61

Scleractinia



Letepsammia formosissima · 62



Stephanophyllia fungulus ··· 63



Fungiacyathus 64



Premocyathus dentiformis · 65



Paracyathus 66



Bourneotrochus stellulatus · 67



Trochocyathus cepulla ····· 68



Trochocyathus gardineri ···· 69



Desmophyllum dianthus ··· 74



Aulocyathus recidivus ······ 70



Thrypticotrochus petterdi ·· 75



Deltocyathus ·········· 71



Flabellum ············ 76



Solenosmilia variabilis ······ 72



Placotrochides scaphula ···· 77



Desmophyllum pertusum ··· 73



Truncatoflabellum phoenix · 78



Javania 79



Polymyces wellsi 80



Balanophyllia 81



Balanophyllia cornu 82



Balanophyllia gigas 83



Eguchipsammia japonica ··· 84



Eguchipsammia 85



Enallopsammia rostrata ···· 86
(thick type)



Enallopsammia rostrata ···· 87
(thin type)



Madrepora oculata 88

Clavularia

ITIS TSN:52058 • WoRMS AphiaID:125286



Physical Description :

- Polyps can retract entirely, especially at night. Normally, polyps unfold entirely during the day. Extremely robust. Irritating to the skin or even toxic to humans.

- Colour: Iridescent green, chestnut, purple, beige or white

Size Information :

- 1 - 2 cm

Habitat information :

- Koko Seamount : 435 - 448 m

Pachyclavularia

WoRMS AphiaID:1343032



Physical Description :

- Have 8 thin, smooth tentacles that form a star shape surrounding the polyp centre opening.
- Colour: Brown, green, yellow, beige, purple or red

Size Information :

- Up to 0.5 cm in diameter

Habitat Information:

- South bank of Suiko Seamount : 974 - 1005 m
- Yomei Seamount : 981 - 1027 m
- Nintoku Seamount : 950 m

Pseudocladochonus

WoRMS AphiaID: 267771



Physical Description :

- Body walls thin, rigid in texture, forming delicate tubes with anastomosing sclerites, overgrown by athecate hydroids.
- Colour: Yellowish orange or pale yellow

Size Information:

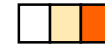
- 1.5 - 15.0 cm height

Habitat Information:

- Koko Seamount : 434 - 675 m
- Colahan Seamount : 640 m
- C-H Seamount : 339 - 371 m

Telesto

WoRMS AphiaID: 177688



Physical Description :

- Each polyp is an individual animal and bears eight feeding tentacles. The stem of the colony is supported by a skeleton of calcareous sclerites partially fused into a network of tubes.

- Colour: Cream, white or orange

Size Information :

- Up to 1.3 cm in diameter

Habitat Information :

- Koko Seamount : 335 - 588 m

- Colahan Seamount : 500 m

Eleutherobia

WoRMS AphiaID:203986



Physical Description :

- Growth form: cylindrical, erect, digitate and unbranched. Sclerites: 8 radiates and capstans. Polyps: spindles.
- Colour: Colony is pink; Surface sclerites are red; Polyp sclerites are in introvert yellow; Points and crowns are colourless

Size Information :

- 1.0 - 10.0 cm

Habitat Information :

- Koko Seamount : 255 - 1292 m
- Kammu Seamount : 437 m
- Colahan Seamount : 329 m
- C-H Seamount : 339 - 487 m



Anthomastus

ITIS TSN:52030 • WoRMS AphiaID:125285



Physical Description :

- Soft, mushroom shaped with cap and (usually) stalk, round to flat; large tentacles (if present) attached to cap; dot-like smaller polyps scattered between larger polyps.

- Colour: Light to dark red

Size Information :

- Up to 10 cm diameter, but typically 5 cm or less

Habitat Information :

- Koko Seamount : 255 - 1290 m
- Kammu Seamount : 437 m
- Colahan Seamount : 330 m
- C-H Seamount : 343 - 487 m

Unidentified Nephtheidae

ITIS TSN:52034 • WoRMS AphiaID:146762



Physical Description:

- Soft or firmer, branching with polyps variable but may resemble clusters of grapes, stem smooth to touch.
- Colour: White or tan to dark

Size Information:

- Typically less than 25 cm

Habitat Information:

- Koko Seamount : 435 - 450 m
- Yuryaku Seamount : 420 m
- Colahan Seamount : 316 m



Nidalia

ITIS TSN:52055 • WoRMS AphiaID: 267631

Physical Description :



- Unbranched, occasionally weakly subdivided colonies. Consisting of a bare stalk and a hemispherical dome-shaped, digitiform, or compressed lobate polyparium. Polyps retractile in calyces.

- Colour: The colony is creamy white at the stalk and light orange at the capitulum and anthocodial armature.

Size Information :

- 5 - 7 mm in maximum diameter

Habitat Information :

- Koko Seamount : 411 - 448 m



Chironephthya

WoRMS AphiaID: 203986



Physical Description:

- Growth form: arborescent, branched and firm.
- Sclerites: spindles on stem and branches.
- Polyps: shelf-like calyces, collaret and points.

- Colour: Colony is orange;
- Sclerites are light yellow or colourless

Size Information:

- 5 cm

Habitat Information:

- Colahan Seamount : 256 - 682 m
- C-H Seamount : 340 m



Unidentified Paralcioniidae

ITIS TSN:361021 • WoRMS AphiaID: 125282



Physical Description :

- Lobed to arborescent upper portions and able to retract this region into the lower stalk. Rigidly reinforced with large sclerites.
- Colour: Greenish brown or golden brown

Size Information :

- 0.5 - 1.5 cm height

Habitat Information :

- Koko Seamount : 336 - 435 m
- Colahan Seamount : 273 m



Anthothela

ITIS TSN:52095 • WoRMS AphiaID: 125324



Physical Description :

- Soft, encrusting or mat-like, with long polyps in loose clusters. Sometimes upright, irregular branches developed from mat.

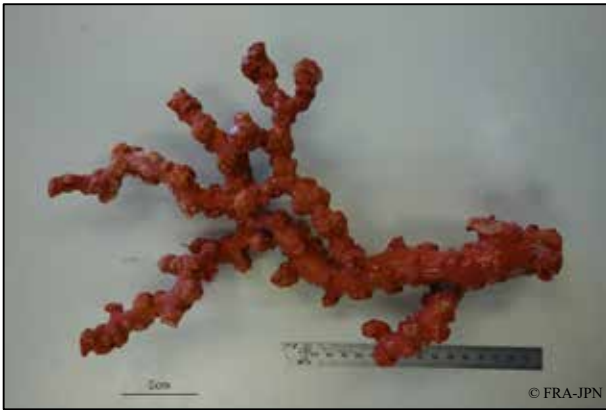
- Colour: pink

Size Information :

- 10 - 30 cm height

Habitat Information :

- Koko Seamount : 483 - 675 m
- Colahan Seamount : 745 m
- C-H Seamount : 554 m



Paragorgia (A)

ITIS TSN: 52108 • WoRMS AphiaID: 1254181

Physical Description :



- Branches thicker with tips greater than 5mm; association with basket stars is common.
- Colour: Polyps are white to tan, orange, pink, red or dark purple

Size Information :

- Up to 30 cm, typically broken pieces collected

Habitat Information :

- South bank of Suiko Seamount : 945 - 1080 m
- Yomei Seamount : 1120 m
- Nintoku Seamount : 950 - 1030 m
- Jingu Seamount : 841 - 1340 m
- Northern Koko Seamount : 557 - 1010 m
- Koko Seamount : 300 - 1000 m
- Kammu Seamount : 376 - 1280 m
- Yuryaku Seamount : 690 m
- Kinmei Seamount : 922 m

Paragorgia (B)

ITIS TSN: 52107 • WoRMS AphiaID: 125419



Physical Description :

- Branches thinner with tips 2–4 mm
- Colour: Polyps are white to tan, orange, pink or red

Size Information :

- Up to 30 cm, typically broken pieces collected

Habitat Information :

- South bank of Suiko Seamount : 945 - 1080 m
- Yomei Seamount : 1120 m
- Nintoku Seamount : 950 - 1030 m
- Jingu Seamount : 841 - 1340 m
- Northern Koko Seamount : 557 - 1010 m
- Koko Seamount : 300 - 1000 m
- Kammu Seamount : 376 - 1280 m
- Yuryaku Seamount : 690 m
- Kinmei Seamount : 575 m

Hemicorallium abyssale

WoRMS AphiaID: 1311238



Physical Description :

- Autozooids very widely separated and few, essentially biserial although an occasional individual out of line. Axis solid, round and smooth
- Colour: Pale pink with center somewhat darker

Size Information :

- 10 cm

Habitat Information :

- Hawaii : 1830 - 2400 m

Hemicorallium laauense

WoRMS AphiaID: 1311253



Physical Description :

- Coenenchyme longitudinally costate, bearing small, conical papillae. Autozooids distributed on two sides and one face of the branches, forming cylindrical. Longitudinally grooved verrucae about 1mm tall. Axis is practically rounded, with broad, longitudinal grooves in the largest parts preserved.

- Colour: White or faintly pink

Size Information :

- 10 cm

Habitat Information :

- Hawaii : 365 - 584 m

Hemicorallium sulcatum

WoRMS AphiaID: 1311261



Physical Description :

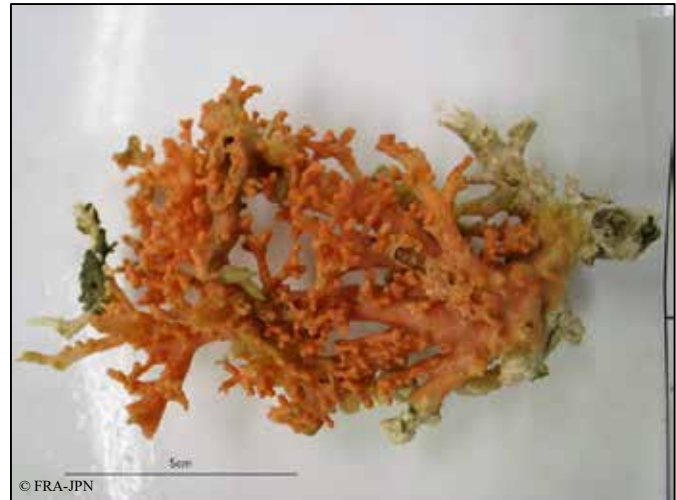
- Small spines distributed in longitudinal rows on the Coenenchyma. Verrucae of autozooids are cylindrical, with eight conspicuous grooves, on one surface of colony, numerous on terminal twigs, fewer on stem. Axis smooth, rounded in section.
- Colour: Light red; Twigs yellow and lighter or darker pinkish

Size Information :

- 15 cm

Habitat Information :

- Japan : 180-550 m



Hemicorallium cf. regale

WoRMS AphiaID: 1311260



Physical Description :

- Surface is not papillate. Axis is solid and rounded in section, surface is smooth. Siphonozooids have small pores, sometimes in small, wart-like protuberances, some distributed on bases of autozooids and some dispersed on the coenenchyme.
- Colour: Pink, pale pink or red.

Size Information :

- 3 - 7 cm

Habitat Information :

- Hawaii : 365 - 723 m

Hemicorallium

WoRMS AphiaID:718773



Physical Description :

- Polyps are dimorphic and have sclerites. Siphonozooids are fertile, usually inconspicuous and distributed near the base of autozooids.

- Colour: Orange, red or white

Size Information :

- 10 cm

Habitat Information :

- North Atlantic, Indian Ocean : 100 – 2000 m

Pleurocorallium cf. pusillum

WoRMS AphiaID: 1311287



Physical Description :

- Colony is dichotomously branched in one plane. Coenenchyme is thick and firm, granulated on the surface. Surface is rough with fine grooves.
- Colour: White and partly pink.

Size Information :

- 5 - 25cm

Habitat Information :

- Japan





Keroeides

ITIS TSN: 719051 • WoRMS AphiaID: 267529

Physical Description :



- Colony is erect. Axis is rigid, consisting of a central cord and cortical layer composed of smooth spicules conglomerated together by a horny matrix.

- Colour: White or bright red

Size Information :

- 5 - 10cm

Habitat Information :

- Koko Seamount : 372 - 590 m

- Kammu Seamount : 455 m

- Colahan Seamount : 284 - 500 m

- C-H Seamount : 340 - 370 m

Acanthogorgia

ITIS TSN: 52117 • WoRMS AphiaID: 125293

Physical Description :



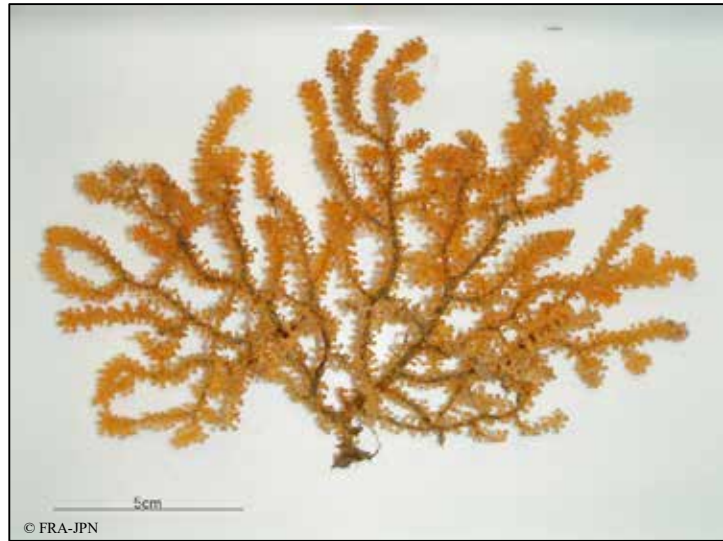
- Growth form: fan-like, in one plane.
Sclerites: warted spindles.
- Colour: Colony is cream with black axis;
Sclerites are colourless.

Size Information :

- Up to 10 cm

Habitat Information :

- Northern Koko Seamount : 460 - 605 m
- Koko Seamount : 280 - 825 m
- Kammu Seamount : 330 - 691 m
- Yuryaku Seamount : 370 - 715 m
- Kinmei Seamount : 860 m
- Colahan Seamount : 285 - 685 m
- C-H Seamount : 340 - 555 m



Acalycigorgia

WoRMS AphiaID: 293247



Physical Description :

- Surface is not papillate. Axis is solid and rounded in section, surface is smooth. Siphonozooids have small pores, sometimes in small, wart-like protuberances, some distributed on bases of autozooids and some dispersed on the coenenchyme.

- Colour : Pink or pale pink

Size Information :

- 10 - 20 cm height

Habitat Information :

- Koko Seamount : 325 - 400 m
- Kammu Seamount : 500 m
- Yuryaku Seamount : 420 - 485 m



Astrogorgia

WoRMS AphiaID: 267242



Physical Description :

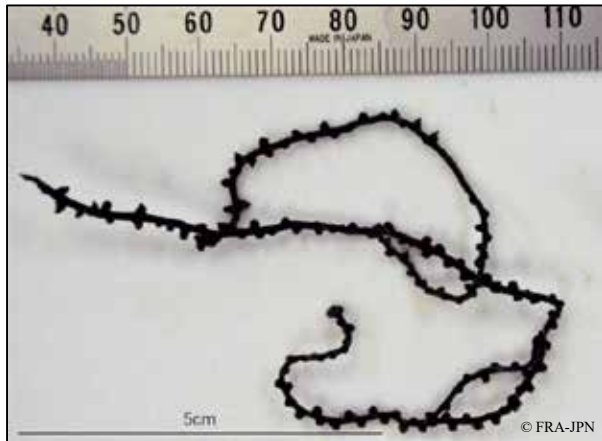
- Growth form: fan in one plane. Sclerites: warty, large spindles on surface. Smaller spindles in the calyces longitudinally arranged. Polyps: short spindles.
- Colour: Colony is pink with red polyps and brown axis; Surface spindles are light purple; Polyp sclerites are red or colourless.

Size Information :

- 15 cm height

Habitat Information :

- Koko Seamount : 335 - 470 m
- Yuryaku Seamount : 460 m
- Colahan Seamount : 285 - 320 m



Bebryce

ITIS TSN: 52137 • WoRMS AphiaID: 125308



Physical Description :

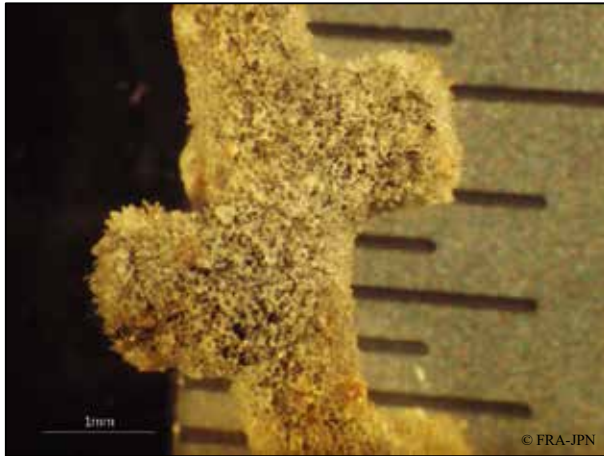
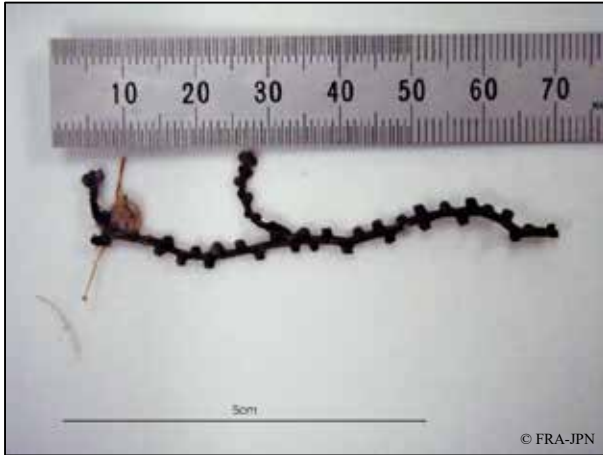
- Growth form: bushy, velvety surface. Sclerites: rosettes, spiny clubs, crosses. Polyp sclerites: curved and bow-shaped spindles.
- Colour: Colony is grey; Sclerites are colourless.

Size Information :

- 10 cm height

Habitat Information :

- Northern Koko Seamount : 577 m
- Koko Seamount : 275 - 500 m
- Kammu Seamount : 500 m
- Yuryaku Seamount : 460 - 485 m
- Colahan Seamount : 285 - 503 m
- C-H Seamount : 340 - 480 m



Calicogorgia

ITIS TSN: • WoRMS AphiaID: 267284

Physical Description :



- Cálices are prominent; coenenchymal spindles are less than 1.5 mm in length.

- Colour: Brown or black

Size Information :

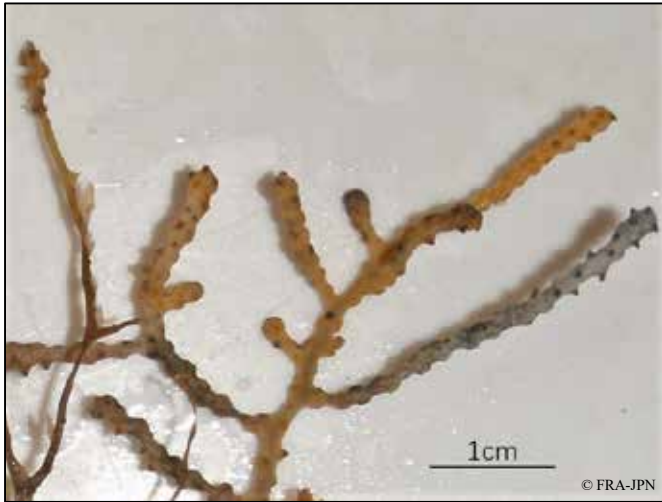
- 5 - 15 cm height

Habitat Information :

- Northern Koko Seamount : 598 m
- Koko Seamount : 358 - 440 m
- Kammu Seamount : 370 - 503 m
- Yuryaku Seamount : 420 m
- Colahan Seamount : 290 - 320 m
- C-H Seamount : 554 m

Euplexaura

ITIS TSN: 719035 • WoRMS AphiaID: 160312



Physical Description :

- Growth form: fan in one plane, smooth surface;
Sclerites: spindles;
Oval and subspheroidal sclerites.
- Colour: Colony is brown; Sclerites are colourless.

Size Information :

- 10 cm height

Habitat Information :

- Koko Seamount : 336 m

Echinomuricea

ITIS TSN: 52160 • WoRMS AphiaID: 177740

Physical Description :

- Growth form: whip-like colonies attached to shells. Sclerites: thornscales with a single long spine and distinct warty base.
- Colour: Colony is brick red; Sclerites are colourless; Thornscales are red; Polyp sclerites are bright red.



Size Information :

- Up to 10 cm height

Habitat Information :

- Yomei Seamount : 980 m
- Jingu Seamount : 877 m
- Koko Seamount : 280-645 m
- Kammu Seamount : 340-562 m
- Yuryaku Seamount : 426-478 m
- Kinmei Seamount : 850-980 m
- Colahan Seamount : 340-1125 m
- C-H Seamount : 414 m



Lepidomuricea

WoRMS AphiaID: 267547



Physical Description :

- Coenenchymal sclerites are scalelike, with complicated margins and short but stout conical spike at or near middle of outer surface. Scales at calicular margin with spine obliquely directed at distal edge.
- Colour: White, gray and black

Size Information :

- 5 - 15 cm height

Habitat Information :

- Koko Seamount : 275 - 590 m
- Yuryaku Seamount : 461 m
- Colahan Seamount : 280 - 655 m
- C-H Seamount : 339 m



Paracis

ITIS TSN: 719053 • WoRMS AphiaID: 267673



Physical Description :

- Growth form: fan in one plane. Sclerites: flattened spindles and thornscales. Polyp sclerites: bow and hockey-stick shaped spindles.
- Colour: Colony is dark brick red; Sclerites are colourless.

Size Information :

- Up to 5 cm height

Habitat Information :

- Koko Seamount : 275 - 750 m
- Kammu Seamount : 340 - 1090 m
- Colahan Seamount : 310 - 855 m
- C-H Seamount : 335 - 555 m

Muriceides

ITIS TSN: 52170 • WoRMS AphiaID:125310



Physical Description :

- Colonies are large and robust. Coenenchyma is thick. Anthocodes with approximately 8 - 10 sclerite neck rings.

- Colour: Creamy white or pale yellow

Size Information :

- 5 - 10 cm height

Habitat Information :

- Koko Seamount : 330 - 675 m

Paramuricea

ITIS TSN: 52124 • WoRMS AphiaID: 125311



Physical Description :

- The stem and branches are stiffened by gorgonin, a complex protein that produces a horny skeleton. Coenenchyme, a thin living layer of cells, covers the skeleton, and the polyps protrude from this.

- Colour: Red and partly yellow

Size Information :

- Up to 10 cm height

Habitat Information :

- Koko Seamount : 350 - 980 m
- Yuryaku Seamount : 461 - 515 m
- Colahan Seamount : 285 - 1125 m
- C-H Seamount : 340 - 740 m

Placogorgia

ITIS TSN: 52141 • WoRMS AphiaID: 125312



Physical Description :

- Large, rude spindles with strong external spines rarely flat scales with a central projecting process or boss, and small, rather blunt calicular thornscales.
- Colour: Red and partly yellow or dark blue

Size Information :

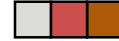
- Up to 10 cm height

Habitat Information :

- Koko Seamount : 335 - 500 m

Villogorgia

ITIS TSN: 52135 • WoRMS AphiaID: 125316



Physical Description :

- Growth form: fan in one plane. Sclerites: triangular with broad, flat bases and short, spiny-leafy projections (calicular thornscales) and thornspindles. Polyp sclerites: bow and hockey-stick shaped spindles.

- Colour: Colony is brick red and grey with brown axis; Sclerites are colourless.

Size Information :

- 10 cm height

Habitat Information :

- Koko Seamount : 335- 1020 m
- Kammu Seamount : 1353 m
- Kinmei Seamount : 965 m
- Colahan Seamount : 300 - 320 m
- C-H Seamount : 340 - 855 m



Leptogorgia

ITIS TSN: 52238 • WoRMS AphiaID: 125302

Physical Description :

- Colonies may be found with a holdfast attaching them to hard substrates, or just lying on the substrate. Polyps are fully retractile into the coenenchyme, which may be slightly raised, mound-like, around the apertures.

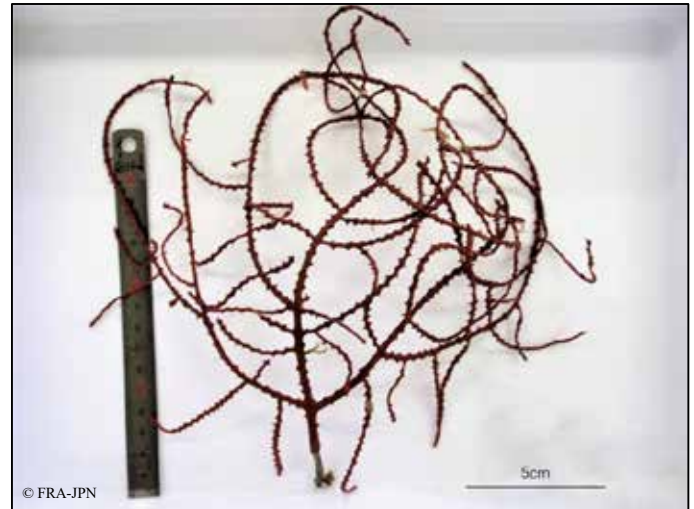
- Colour: White, yellow, orange, red, violet, brownish or bicoloured dark red and black

Size Information :

- 20 - 30 cm height

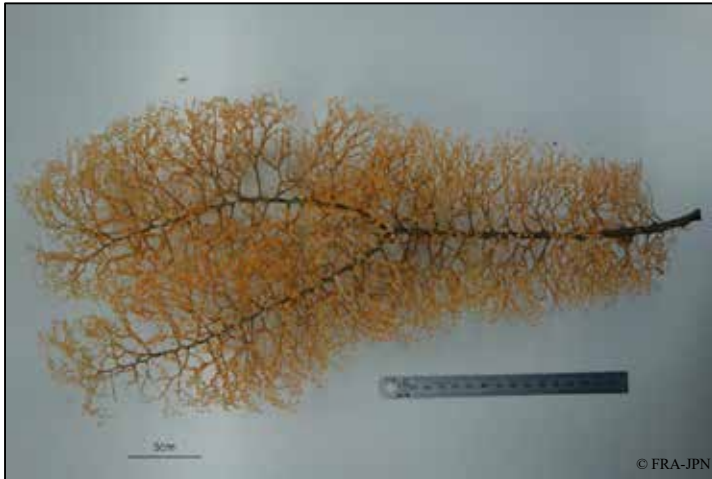
Habitat Information :

- Northern Koko Seamount : 445 - 620 m
- Koko Seamount : 275 - 572 m
- Kammu Seamount : 340 - 480 m
- C-H Seamount : 364 m



Chrysogorgia

ITIS TSN: 52299 • WoRMS AphiaID: 125294



Physical Description :

- Colonies are sympodial, branches subdividing dichotomously, originating in a regular spiral around the main axis, or forming 2 parallel fans at the top of a short trunk. Axis are strongly calcified, with brilliant metallic luster.

- Colour: Golden or yellow

Size Information :

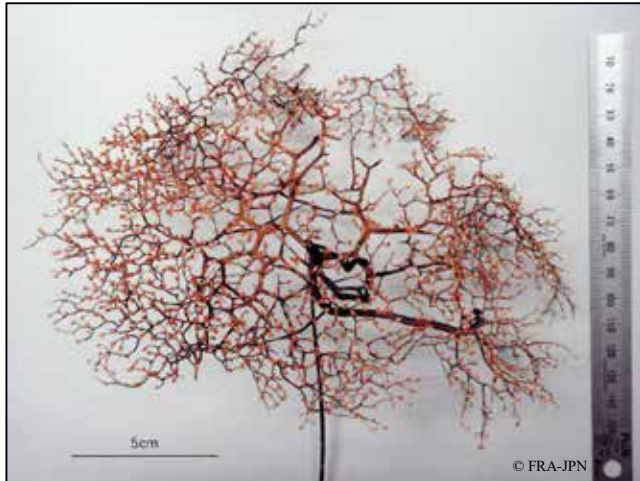
- 20 - 70 cm height

Habitat Information :

- Northern Koko Seamount : 450 - 1120 m
- Koko Seamount : 430 - 1130 m
- Kammu Seamount : 330 - 615 m
- Yuryaku Seamount : 882 m
- Colahan Seamount : 660 - 957 m

Metallogorgia

ITIS TSN:719052 • WoRMS AphiaID: 125296



Physical Description :

- Colonies are monopodial, dichotomously subdivided branches arising from the top of a tall, upright main stem. Axis are strongly calcified, with metallic luster most conspicuous on the secondary branches, the main trunk glossy.
- Colour: Golden or yellow and black

Size Information :

- 40 - 45cm height

Habitat Information :

- Northern Koko Seamount : 765 m
- Koko Seamount : 1300 m
- Kammu Seamount : 1353 m
- Colahan Seamount : 1070 m
- C-H Seamount : 940 - 1125 m



Iridogorgia

ITIS TSN: 52303 • WoRMS AphiaID: 125295



Physical Description :

- Terminal branches are simple, arising around the outside of the spirally coiled main stem; colonies are not flabellate.
- Colour: Normally orange, yellow or white.

Size Information :

- 10 cm

Habitat Information :

- Northern Koko Seamount : 1110 m
- Kammu Seamount : 1275 m
- C-H Seamount : 940 m



Primnoa

ITIS TSN: 52305 • WoRMS AphiaID: 125321



Physical Description :

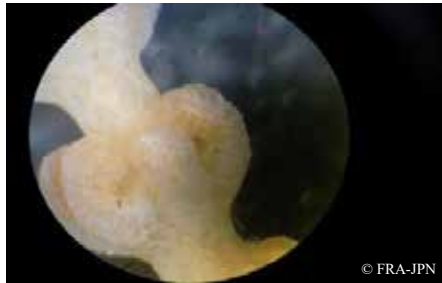
- Often uniplanar but occasionally bushy. Large fleshy polyps are heavily scaled, closely spaced, and typically face downwards.
- Colour: Axial skeleton is golden, dark brown to black, dark to light orange or very rarely white.

Size Information :

- Up to 25 cm

Habitat Information :

- South bank of Suiko Seamount : 940 - 1080 m
- Yomei Seamount : 965 - 1160 m
- Northern Koko Seamount : 1085 - 1445 m
- Koko Seamount : 350 - 885 m
- Kammu Seamount : 580 - 745 m
- Yuryaku Seamount : 775 - 1010 m
- Kinmei Seamount : 853 m
- Colahan Seamount : 500 - 640 m



Callogorgia

ITIS TSN: 52313 • WoRMS AphiaID: 125317



Physical Description :

- Colonies usually pinnately branched in an alternating manner, dichotomously branched in one plane, or, rarely, opposite pinnately branched. Outer surface of body wall scales smooth, granular, or covered with prominent radiating or reticulate ridges.

- Colour: Iridescent or pink

Size Information :

- 15 - 85 cm

Habitat Information :

- Northern Koko Seamount : 577 m
- Koko Seamount : 275 - 1295 m
- Kammu Seamount : 310 - 1355 m
- Yuryaku Seamount : 420 - 715 m
- Colahan Seamount : 440 - 1070 m
- C-H Seamount : 340 - 1121 m



Thouarella

ITIS TSN: 52326 • WoRMS AphiaID: 125323



Physical Description :

- Colonies of most species branch in a bottlebrush fashion, two species have pinnate branching. Outer and inner faces of body wall scales radially ridged distally. Coenenchymal scales in two layers: outer layer composed of irregularly shaped scales with granular outer surface; inner layer composed of small spheroids.

- Colour: Bright yellow

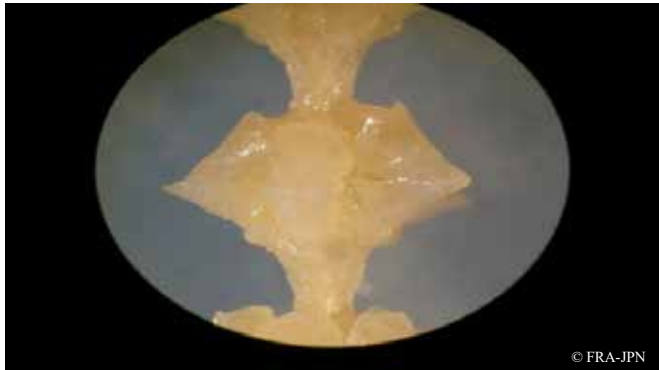
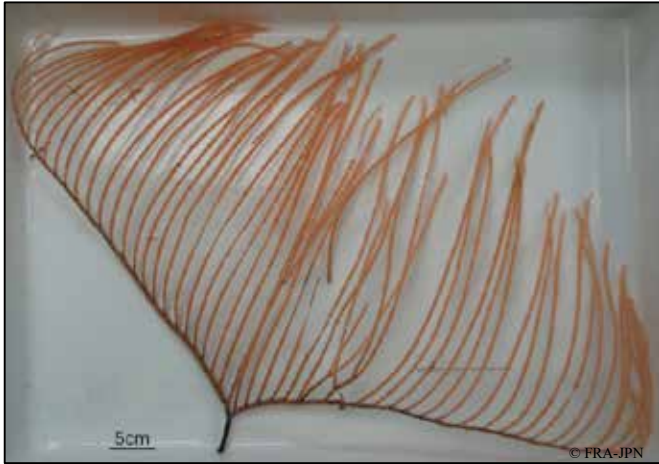
Size Information :

- 20 - 100 cm

Habitat Information :

- Northern Koko Seamount : 450 - 465 m
- Koko Seamount : 270 - 750 m
- Kammu Seamount : 300 - 830 m
- Yuryaku Seamount : 390 - 950 m
- Colahan Seamount : 270 - 665 m
- C-H Seamount : 340 - 345 m





Calyptrophora

ITIS TSN: 719023 • WoRMS AphiaID: 177833



Physical Description :

- Colonies dichotomously branched, the type species being uniplanar dichotomous, or unbranched. Polyps protected by two pairs of crescent-shaped sclerites, each pair formed by the inseparable fusion of two sclerites both ab- and adaxially.

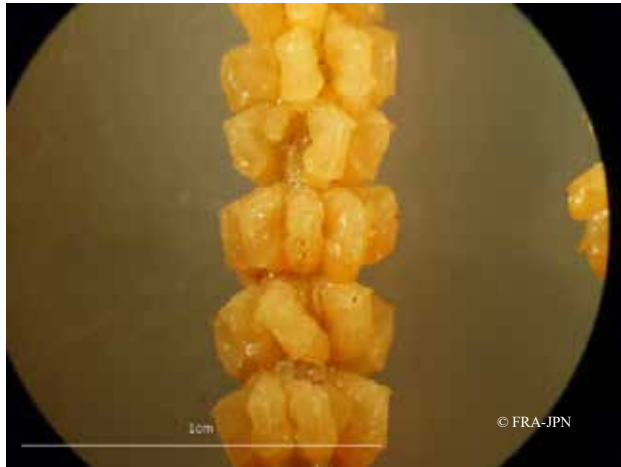
- Colour: Whitish gold, dark-gold or yellow

Size Information :

- 16 - 65 cm

Habitat Information :

- Northern Koko Seamount : 452 - 577 m
- Koko Seamount : 280 - 820 m
- Kammu Seamount : 363 m
- Kinmei Seamount : 934 m
- Colahan Seamount : 270 - 500 m
- C-H Seamount : 335 - 390 m



Arthroorgia



ITIS TSN: 719023 • WoRMS AphiaID: 267238

Physical Description :

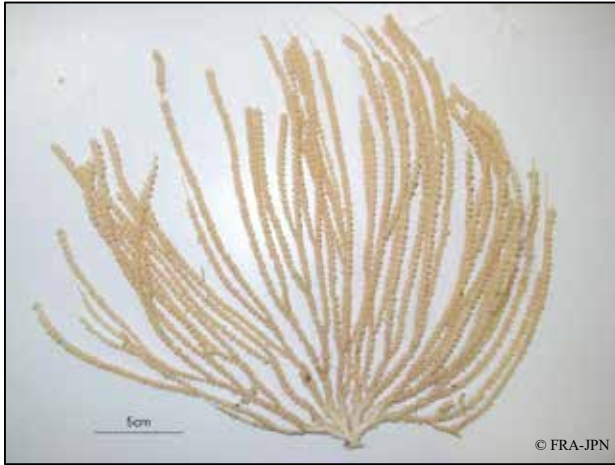
- Polyps point downward and occur in close-spaced whorls with prominent spines. Uniplanar with dichotomous or pinnate branching.
- Colour: Light orange to white; Axial skeleton is brown and woody.

Size Information :

- Upright colonies up to 50 cm

Habitat Information :

- Northern Koko Seamount : 435 - 765 m
- Koko Seamount : 280 - 685 m
- Kammu Seamount : 345 - 645 m
- Yuryaku Seamount : 385 - 940 m
- Kinmei Seamount : 870 - 1075 m
- Colahan Seamount : 270 - 590 m



Narella

ITIS TSN: 52320 • WoRMS AphiaID: 125319

Physical Description :



- Colonies dichotomously branched in one or more planes, pinnate, or unbranched. Polyps protected by three or, rarely, four pairs of large abaxial body wall scales. Coenenchymal scales arranged in one layer; outer surface often elaborately ridged or keeled.

- Colour: White to light orange

Size Information :

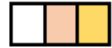
- 15 - 50 cm

Habitat Information :

- Koko Seamount : 275 - 675 m
- Kammu Seamount : 350 - 640 m
- Yuryaku Seamount : 485 m
- Colahan Seamount : 503 m
- C-H Seamount : 972 m

Candidella

ITIS TSN: 719047 • WoRMS AphiaID: 125318



Physical Description :

- Colonies dichotomously branching or unbranched. Polyps arranged in whorls, individual polyps standing perpendicular to branch. Each polyp with four large marginal scales, forming a distinct cowl around operculum. Opercular scales have a prominent keel. Coenenchymal scales elliptical, with concave outer surface.

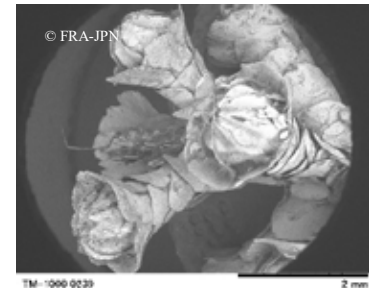
- Colour: Light orange to white

Size Information :

- 15 - 50 cm

Habitat Information :

- Koko Seamount : 335 - 675 m
- Kammu Seamount : 460 m
- Yuryaku Seamount : 505 m



Fanellia

ITIS TSN: 719024 • WoRMS AphiaID:267434



Physical Description :

• Polys point upward and occur in close-spaced whorls on surfaces, uniplanar with dichotomous or pinnate branching.). Coenenchymal scales in two layers, including an inner layer of tuberculate spheroids that separates the stem canals; coenenchymal scales polygonal and quite thick.

- Colour: Brown to bronze or orange

Size Information :

- Up to 1 m

Habitat and Abundance :

- Northern Koko Seamount : 680 m
- Koko Seamount : 275 - 540 m
- Kammu Seamount : 405 - 645 m
- Yuryaku Seamount : 420 - 710 m
- Colahan Seamount : 270 - 940 m
- C-H Seamount : 335 - 390 m



Fannyella

WoRMS AphiaID: 267435



Physical Description :



- Colonies uniplanar and dichotomously branching (often lyrate). Body wall scales distinctively shaped, the outer surface with a dentate or smooth transverse crest that divides the scale into a distal, more or less concave or oblique cup-shaped part, and a proximal, tuberculate base, these chalice-like sclerites termed ascus scales.

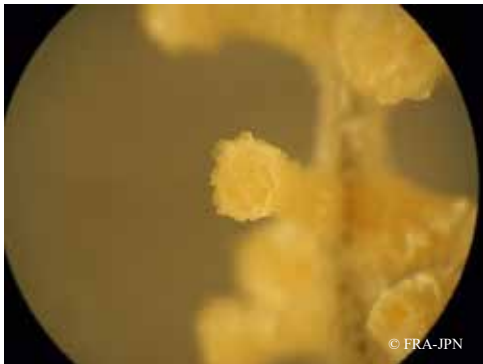
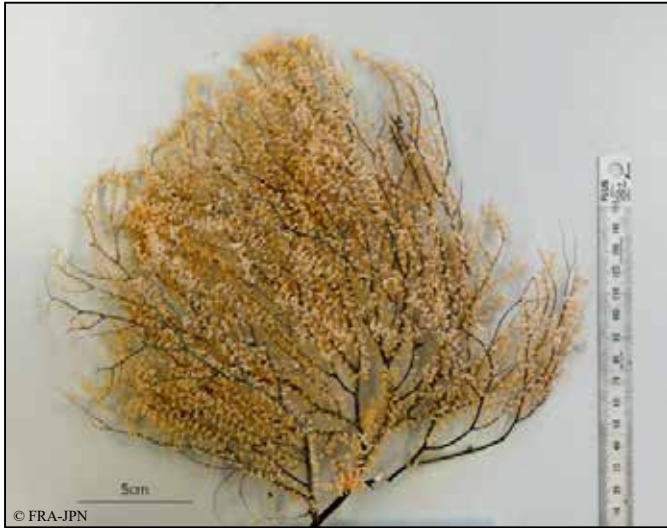
- Colour: Light orange to white

Size Information :

- 15-30 cm height

Habitat and Abundance :

- Koko Seamount : 675 m
- C-H Seamount : 335 - 480 m



Parastenella

WoRMS AphiaID: 267700



Physical Description :

- Dichotomous or irregular branching. Delicate polyps arranged as whorls, pairs, or individuals. Colonies of most species planar dichotomous, occasionally slightly bushy.
- Colour: Axial skeleton is usually dark brown or light orange to white

Size Information :

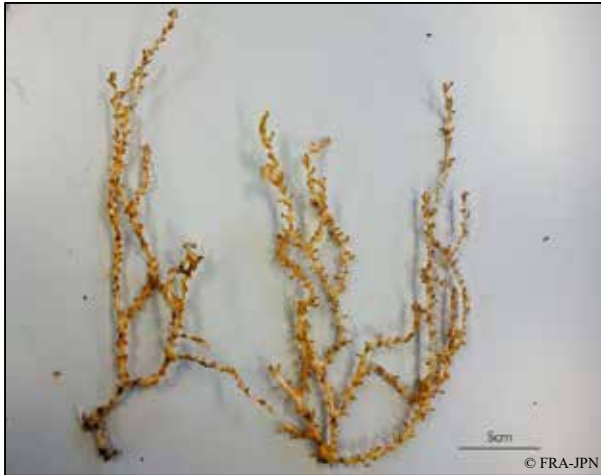
- Up to 30 cm

Habitat and Abundance :

- Jingu Seamount : 877 m
- Northern Koko Seamount : 550 - 1445 m
- Koko Seamount : 570 - 980 m
- Kinmei Seamount : 850 - 1225 m

Keratoisis

ITIS TSN: 52330 • WoRMS AphiaID: 125306



Physical Description :

- Tree-like; hard and rigid; long, slender, sparse branches.
- Colour: Polyps are pale pink to orange (may phosphoresce); Skeleton is white with golden brown joints.

Size Information :

- Up to 100 cm

Habitat Information:

- South bank of Suiko Seamount : 982 m
- Northern Koko Seamount : 570 - 1001 m
- Koko Seamount : 295 - 560 m
- Kammu Seamount : 300 - 540 m
- Kinmei Seamount : 1225 m

Acanella

ITIS TSN: 52337 • WoRMS AphiaID: 125303



Physical Description :

- Bush-like; skeleton stiff but delicate, segmented; branching base (sometimes missing).
- Colour: Polyps are pale to dark orange; Skeleton is white with darker bands

Size Information :

- Less than 30 cm

Habitat Information :

- South bank of Suiko Seamount : 972 m
- Yomei Seamount : 1145 m
- Northern Koko Seamount : 479 m
- Koko Seamount : 275 - 675 m
- Kammu Seamount : 360 - 1050 m
- Yuryaku Seamount : 480 - 510 m
- Colahan Seamount : 640 m
- C-H Seamount : 340 - 420 m

Isidella

ITIS TSN: 719033 • WoRMS AphiaID: 125305



Physical Description :

- Colonies flat and spreading, branching not in whorls. Polyps non-retractile, cylindrical, armed with needles longitudinally placed in body wall at base of tentacles; prickly rods in wall of tentacles and pharynx.

- Colour: Orange-red

Size Information :

- 40 - 100 cm

Habitat Information :

- South bank of Suiko Seamount : 960 - 1080 m
- Yomei Seamount : 1000 - 1130 m
- Nintoku Seamount : 1085 - 1445 m
- Northern Koko Seamount : 452 m
- Koko Seamount : 295 - 435 m
- Kammu Seamount : 335 - 640 m
- Yuryaku Seamount : 420 m
- Daikakuji Seamount : 1488 m

Lepidisis

ITIS TSN: 52346 • WoRMS AphiaID: 125307



Physical Description :

- Colony simple or branched. Branches when present arise from horny nodes. Axis consists of long, solid or tubular calcareous internodes and short, horny nodes. Polyps large.
- Colour: Dark brown or light orange to white

Size Information :

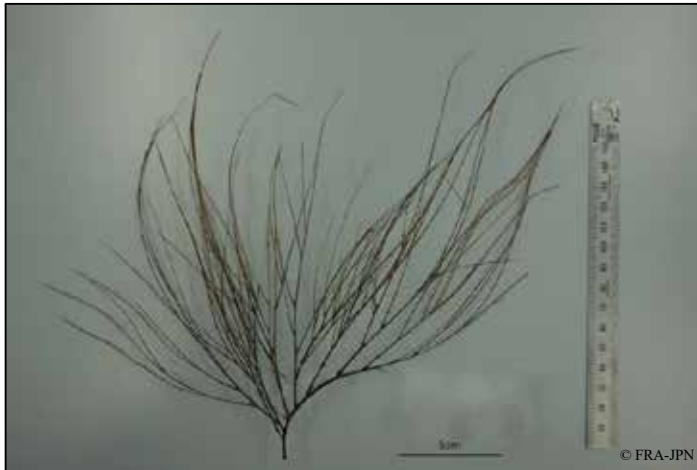
- 70 - 300 cm

Habitat Information :

- Yomei Seamount : 1012 m
- Koko Seamount : 285 - 1012 m
- Kammu Seamount : 1353 m

Antipathes densa

WoRMS AphiaID: 283894



Physical Description :

- The zygote develops into a planktonic planula larva. Metamorphosis begins with early morphogenesis of tentacles, septa and pharynx before larval settlement on the aboral end.

- Colour: Brown, gray or light olive green

Size Information :

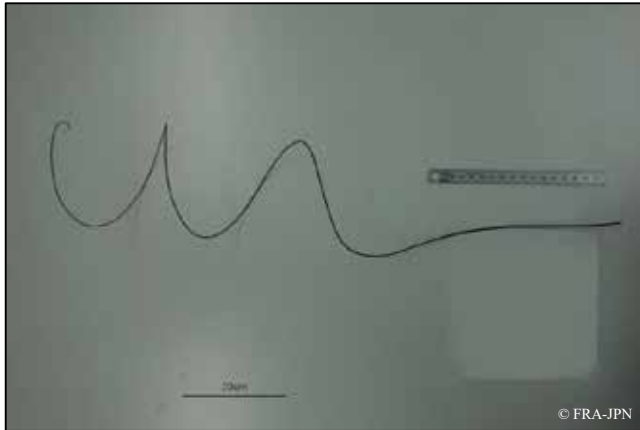
- 15 cm

Habitat Information :

- Koko Seamount : 275 - 1002 m
- Kammu Seamount : 340 - 535 m
- Yuryaku Seamount : 475 - 530 m
- Colahan Seamount : 654 m
- C-H Seamount : 1121 m

Stichopathes

ITIS TSN: 51963 • WoRMS AphiaID: 103308



Physical Description :

- Elongate and whip-like; spiraled.
- Colour: polyps are orange which can be peeled to reveal a black skeleton

Size Information :

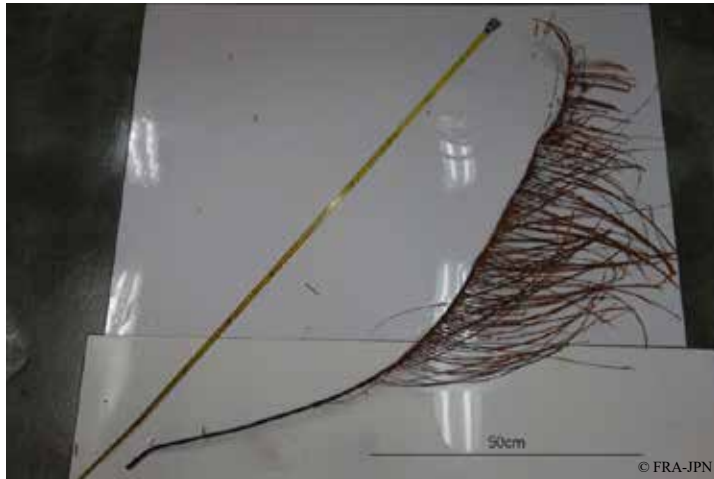
- Up to 80 cm

Habitat Information :

- Koko Seamount : 255-660 m
- Kammu Seamount : 358-535 m
- Yuryaku Seamount : 420 m
- Colahan Seamount : 304 m
- C-H Seamount : 568 m

Bathypathes

ITIS TSN: 51978 • WoRMS AphiaID: 103304



Physical Description :

- Corallum monopodial and pinnulate; attached to hard substrates by an adhesive basal plate. Pinnules simple.
- Colour: orange, red or yellow

Size Information :

- Generally less than 0.5 m; sometimes several metres tall.

Habitat Information :

- Yomei Seamount : 1120 m
- Koko Seamount : 275-500 m
- Kammu Seamount : 345-525 m
- Yuryaku Seamount : 534 m

Dendrobathypathes

WoRMS AphiaID: 267372



Physical Description :

- Corallum monopodial to extensively branched, and pinnulate. Stem, branches and primary pinnules generally in one plane.
- Colour: Orange or brown

Size Information :

- Up to 1 m

Habitat Information :

- South bank of Suiko Seamount : 960 - 1025 m
- Yomei Seamount : 1010 - 1120 m
- Nintoku Seamount : 957 - 1020 m
- Northern Koko Seamount : 1245 m
- Koko Seamount : 645 - 820 m



Lillipathes

WoRMS AphiaID: 267553



Physical Description :

- Corallum branched sparsely, mostly to the second and third order; stem and branches pinnulate. Pinnules simple, arranged bilaterally.
- Colour : Polyps are orange, skeleton is black

Size Information :

- Up to several metres tall.

Habitat Information :

- Northern Koko Seamount : 949 m
- Kammu Seamount : 379 m
- Kinmei Seamount : 1014 m

Stauropathes

ITIS TSN: 719057 • WoRMS AphiaID: 267854



Physical Description :

- Bush-like, densely branched on one plane causing flat appearance; two rows of small, unbranched pinnules (needles) on branches, often crossed and fusing with other branches/pinnules.
- Colour: Polyps are orange, skeleton is black

Size Information :

- Up to 80 cm

Habitat Information :

- South bank of Suiko Seamount : 963 m
- Yomei Seamount : 895 - 1070 m
- Nintoku Seamount : 990 - 1030 m
- Koko Seamount : 409 - 685 m
- Colahan Seamount : 949 m

Taxipathes

ITIS TSN: 51982 • WoRMS AphiaID: 267890



Physical Description :

- Corallum branched, stem and branches pinnulate. The pinnular spines are simple, smooth, acute, and conical and hooked upward.

- Colour: Polyps are orange, skeleton is black

Size Information :

- 25 - 30 cm tall

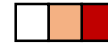
Habitat Information :

- Northern Koko Seamount : 450 - 600 m
- Koko Seamount : 285 - 445 m
- Kammu Seamount : 335 - 475 m



Leiopathes

ITIS TSN: 51973 • WoRMS AphiaID: 103305



Physical Description :

- Grows in a sympodial manner; the original axis stops growing after a while, with one or more side branches forking out randomly, only to stop growing as other branches take over. The skeleton is composed of a spiny keratin-like material, laid down in concentric layers.

- Colour: Orange, red or white

Size Information :

- Up to 2 m

Habitat Information :

- Northern Koko Seamount : 590 - 620 m

- Koko Seamount : 285 - 740 m

- Kammu Seamount : 325 - 445 m

- Yuryaku Seamount : 488 m

Cladopathes



WoRMS AphiaID: 267323



Physical Description :

- Primary pinnules arranged irregularly in rows. Subpinnules occurring mostly on anterior primary pinnules and not regularly arranged. Tertiary pinnules present.

- Colour: Colony axis is brown and polyps are white

Size Information :

- 30 - 100 cm

Habitat Information :

- Northern Koko Seamount : 497 m
- Koko Seamount : 275 - 990 m
- Kammu Seamount : 400 - 500 m
- Kinmei Seamount : 860 m
- Colahan Seamount : 765 m

Trissopathes

ITIS TSN: 719058 • WoRMS AphiaID: 267926



Physical Description :

- Primary pinnules arranged in four regular rows. Lateral/posterolateral primary pinnules usually without subpinnules; anterior primaries simple or with up to six or more subpinnules. Subpinnules commonly arranged in subopposite pairs (rarely alternating).
- Colour: Yellow, brown or black

Size Information :

- 15 - 25cm

Habitat Information :

- Koko Seamount : 300 - 525 m
- Kammu Seamount : 460 m



Letepsammia formosissima

ITIS TSN: 53175 • WoRMS AphiaID: 290286



Physical Description :

- Corallum fragile. Base flat to slightly convex, with slightly upturned peripheral edges. Costae thin ridges.

- Colour: Ivory-white

Size Information :

- Up to 51 mm in diameter

Habitat Information :

- Koko Seamount : 290 - 590 m
- Kammu Seamount : 453 m
- Yuryaku Seamount : 460 - 485 m

Stephanophyllia fungulus

WoRMS AphiaID: 291125



Physical Description :

- Base variable in shape, ranging from flat to slightly concave or convex, but the peripheral edges are always slightly upturned. Septa arranged in typical micrabaciid fashion.

- Colour: Ivory-white

Size Information :

- Up to 16 mm in calicular diameter

Habitat Information :

- Koko Seamount : 410 - 630 m

- Kammu Seamount : 561 m

Fungiacyathus

ITIS TSN: 53109 • WoRMS AphiaID: 135119



Physical Description :

- Exclusively azooxanthellate and exclusively solitary in growth form. Solitary, free, discoidal coralla, usually with a flat or slightly concave base that bears ridged costae or granules.
- Colour: White or yellow

Size Information :

- Up to 62 mm in calicular diameter

Habitat Information :

- Koko Seamount : 300 - 590 m
- Kammu Seamount : 450 - 905 m
- Yuryaku Seamount : 461 m

Premocyathus dentiformis

ITIS TSN: 572410 • WoRMS AphiaID: 286850



Physical Description :

- Having compressed coralla with carinate (but not spinose) convex thecal edge. Base invariably an open scar.
- Colour: White

Size Information :

- 1 – 2 cm

Habitat Information :

- Koko Seamount : 490 - 1100 m

Paracyathus

ITIS TSN: 53560 • WoRMS AphiaID: 135096



Physical Description :

- Corallum ceratoid and firmly attached through a thick pedicel and polycyclic base. Costae equal, rounded, and slightly granular, lower theca encrusted.

- Colour: Light brown

Size Information :

- 6 mm in calicular diameter and 10 mm tall

Habitat Information :

- Koko Seamount : 255 - 455 m

- Kammu Seamount : 360 - 400 m

Bourneotrochus stellulatus

ITIS TSN: 53674 • WoRMS AphiaID: 289532



Physical Description :

- The zygote develops into a planktonic planula larva. Metamorphosis begins with early morphogenesis of tentacles, septa and pharynx before larval settlement on the aboral end
- Colour: Ivory-white or yellow

Size Information :

- 0.5 cm in diameter

Habitat Information :

- Koko Seamount : 300 - 435 m

Trochocyathus cepulla

ITIS TSN: 53109 • WoRMS AphiaID: 286875



Physical Description :

- Mature gametes are shed into the coelenteron and spawned through the mouth. Metamorphosis begins with early morphogenesis of tentacles, septa and pharynx before larval settlement on the aboral end.

- Colour: Ivory-white or light orange

Size Information :

- 0.5 - 0.8 cm

Habitat Information :

- Koko Seamount : 415 - 455 m

- C-H Seamount : 370 m

Trochocyathus gardineri

ITIS TSN: 572539 • WoRMS AphiaID: 286882



Physical Description :

- Mature gametes are shed into the coelenteron and spawned through the mouth. Metamorphosis begins with early morphogenesis of tentacles, septa and pharynx before larval settlement on the aboral end.

- Colour: Ivory-white, light orange, dark red or brown

Size Information :

- 1 - 2 cm

Habitat Information :

- Koko Seamount : 415 - 455 m

Aulocyathus recidivus

ITIS TSN: 53676 • WoRMS AphiaID: 286722



Physical Description :

- Corallum ceratoid, straight with round calice. Theca glossy, granular, sometimes marked by shallow striae. Costal granulation often indistinct and irregular.
- Colour: Ivory-white, light orange or dark red

Size Information :

- The maximum diameter is about 9 mm

Habitat Information :

- Koko Seamount : 490 - 630 m
- Kammu Seamount : 622 m

Deltocyathus

ITIS TSN: 53574 • WoRMS AphiaID: 135092



Physical Description :

- Corallum solitary, discoidal to patellate, free in adult stage. Costae well developed, and pali present before all but last septal cycle, but paliform lobes may also be present before the fourth cycle.

- Colour: Light gray, orange or dark red

Size Information :

- 1.0 - 1.5 cm in diameter

Habitat Information :

- Koko Seamount : 335 - 440 m

Solenosmilia variabilis

ITIS TSN: 53698 • WoRMS AphiaID: 135168



Physical Description :

- The colony is attached by an encrusting base.
- Colour: White; glossy, and light gray or orange

Size Information :

- Up to 20 mm in calice size; reef-forming species

Habitat Information :

- Koko Seamount : 588 m
- Kammu Seamount : 684 m
- Colahan Seamount : 650 - 1240 m

Desmophyllum pertusum

ITIS TSN: 53706 • WoRMS AphiaID: 1245747



Physical Description :

- Corallum forming large bushy colonies. Corallite skeleton connected to the parental one at least in the early growth stage.
- Colour: White, glossy, light gray or orange

Size Information :

- Up to 2 cm in maximum calicular diameter

Habitat Information :

- Koko Seamount : 470 - 640 m
- C-H Seamount : 554 m

Desmophyllum dianthus

ITIS TSN: 572071 • WoRMS AphiaID: 135159



Physical Description :

- Corallum of solitary species greatly variable in shape, trochoid with subcylindrical pedicel or cylindrical, ceratoid, scolecoïd. Colonial corallum bushy in shape, often with anastomosing branches.

- Colour: White or orange

Size Information :

- Up to 20 cm

Habitat Information :

- Koko Seamount : 480 - 1015 m
- Kammu Seamount : 550 - 745 m
- Colahan Seamount : 650 - 780 m
- C-H Seamount : 425 - 568 m

Thrypticotrochus petterdi

ITIS TSN: 572525 • WoRMS AphiaID: 291221



Physical Description :

- Corallum ceratoid, circular in cross section, and with a pointed base, base often irregularly shaped due to asexual fragmentation; theca imperforate; costae serrate, originating by trifurcation.

- Colour: Ivory-white or orange

Size Information :

- 0.5 - 1.0 cm

Habitat Information :

- Koko Seamount : 490 - 650 m

Flabellum

ITIS TSN: 53713 • WoRMS AphiaID: 135114



Physical Description :

- With a short, thick peduncle and a long elliptical, slightly curved calyx. The costae are indistinct, simple and flat.

- Colour: Ivory-white, orange or brick red

Size Information :

- 1 - 5 cm

Habitat Information :

- Koko Seamount : 295 - 340 m

- Kammu Seamount : 365 - 436 m

- Colahan Seamount : 270 - 330 m

Placotrochides scaphula

ITIS TSN: 572362 • WoRMS AphiaID: 287042



Physical Description :

- With a short, thick peduncle and a long elliptical, slightly curved calyx. The costae are indistinct, simple and flat.
- Colour: Ivory-white, orange or brick red

Size Information :

- Up to 27 mm

Habitat Information :

- Koko Seamount : 490 - 500 m
- Colahan Seamount : 280 - 320 m

Truncatoflabellum phoenix

ITIS TSN: 572578 • WoRMS AphiaID: 287063



Physical Description :

- The zygote develops into a planktonic planula larva. Metamorphosis begins with early morphogenesis of tentacles, septa and pharynx before larval settlement on the aboral end.

- Colour: Ivory-white, orange or dark red

Size Information :

- Up to 18 mm

Habitat Information :

- Colahan Seamount : 255 - 330 m

Javania

ITIS TSN: 53739 • WoRMS AphiaID: 135115



Physical Description :

- Corallum trochoid, straight, firmly attached through a thick pedicel, and having a slightly flared calicular edge.
- Colour: Ivory-white, gray or brick red

Size Information :

- 0.7 - 1.2 cm

Habitat Information :

- C-H Seamount : 370 - 545 m

Polymyces wellsii

ITIS TSN: 53756 • WoRMS AphiaID: 290839



Physical Description :

- The base is cylindrical, the surface of the coral body is smooth, and some individuals have ridged edges. Coral hole enlargement, nearly oval, flared or conical.
- Colour: Ivory-white or brick red

Size Information :

- Up to 45 mm

Habitat Information :

- Koko Seamount : 603 m
- Kammu Seamount : 560 - 670 m
- Colahan Seamount : 665 m
- C-H Seamount : 568 m



Balanophyllia

ITIS TSN: 53773 • WoRMS AphiaID: 135108



Physical Description :

- The base is cylindrical, the surface of the coral body is smooth, and some individuals have ridged edges. Coral hole enlargement, nearly oval, flared or conical.
- Colour: Bright orange or yellow

Size Information :

- Up to 38 mm

Habitat Information :

- Koko Seamount : 290 - 675 m
- Kammu Seamount : 455 - 550 m

Balanophyllia cornu

ITIS TSN: 571856 • WoRMS AphiaID: 286910



Physical Description :

- The calcareous exoskeleton is broad and low
- Colour: Golden yellow, yellow, orange or scarlet

Size Information :

- 1.0 - 1.2 cm

Habitat Information :

- Koko Seamount : 290 - 445 m

© FRA-JPN

Balanophyllia gigas

ITIS TSN: 571873 • WoRMS AphiaID: 286927



Physical Description :

- The zygote develops into a planktonic planula larva. Metamorphosis begins with early morphogenesis of tentacles, septa and pharynx before larval settlement on the aboral end.
- Colour: Ivory-white, golden yellow, yellow or brown

Size Information :

- 1.5 - 10.0 cm

Habitat Information :

- Koko Seamount : 300 - 415 m
- Kammu Seamount : 503 m

Eguchipsammia japonica

ITIS TSN: 572104 • WoRMS AphiaID: 286984



Physical Description :

- Coral surface is rough, covered with tiny holes and scattered irregular protrusions; coral holes are approximately circular.
- Colour: Ivory-white, yellow, orange or brown

Size Information :

- 8 - 150 mm

Habitat Information :

- Koko Seamount : 330 - 440 m
- Colahan Seamount : 329 m

Eguchipsammia

ITIS TSN: 571722 • WoRMS AphiaID: 135111



Physical Description :

- Corallum colonial, recumbant, having irregular, extratentacular budding from an axial corallite; theca costate and hispid.
- Colour: Ivory-white, yellow, orange or brown

Size Information :

- 1.5 - 12.0 cm

Habitat Information :

- Koko Seamount : 255 - 675 m
- Kammu Seamount : 365 - 610 m
- Yuryaku Seamount : 461 m
- Colahan Seamount : 440 m
- C-H Seamount : 335 - 445 m

Enallopsammia rostrata (thick type)

ITIS TSN: 53843 • WoRMS AphiaID: 135190



Physical Description :

- Colony flabellate, dendroid; extra tentacular branching occurring at every or every second or third corallite.
- Colour: White, ivory-white, yellow or orange

Size Information :

- Base up to 30 mm in diameter; reef-forming species

Habitat Information :

- Nintoku Seamount : 984 m
- Jingu Seamount : 850 - 930 m
- Northern Koko Seamount : 1110 - 1245 m
- Koko Seamount : 430 - 1165 m
- Kammu Seamount : 365 - 1045 m
- Yuryaku Seamount : 770 - 938 m
- Kinmei Seamount : 959 m
- Colahan Seamount : 325 - 1270 m
- C-H Seamount : 410 - 980 m



Enallopsammia rostrata (thin type)

ITIS TSN: 53843 • WoRMS AphiaID: 135190



Physical Description :

- Colony flabellate, dendroid; extra tentacular branching occurring at every or every second or third corallite.
- Colour: White, ivory-white, yellow or orange

Size Information :

- Base up to 30 mm in diameter; reef-forming species

Habitat Information :

- Koko Seamount : 300 - 675 m
- Kammu Seamount : 600 - 630 m
- Yuryaku Seamount : 461 m
- Colahan Seamount : 500 - 650 m
- C-H Seamount : 410 - 740 m

Madrepora oculata

ITIS TSN: 53402 • WoRMS AphiaID: 135209



Physical Description :

- Skeletal structure is fragile, unable to maintain large erect colonies. Parts of its thickened chitinous skeleton growing in lamellar structures.

- Colour: Ivory-white

Size Information :

- 30 - 50 cm; reef-forming species

Habitat Information :

- Jingu Seamount : 844 m
- Koko Seamount : 590 - 875 m
- Kammu Seamount : 684 m
- Colahan Seamount : 440 - 1240 m

