

National Parks and Wildlife Service

Conservation Objectives Series

Valencia Harbour/Portmagee Channel SAC
002262



An Roinn
Ealaíon, Oidhreachta agus Gaeltachta

Department of
Arts, Heritage and the Gaeltacht



**National Parks and Wildlife Service,
Department of Arts, Heritage and the Gaeltacht,
7 Ely Place, Dublin 2, Ireland.**

**Web: www.npws.ie
E-mail: nature.conservation@ahg.gov.ie**

Citation:

NPWS (2012) Conservation Objectives: Valencia Harbour/Portmagee Channel SAC 002262. Version 1.0.
National Parks and Wildlife Service, Department of Arts, Heritage and the Gaeltacht.

**Series Editors: Rebecca Jeffrey & Naomi Kingston
ISSN 2009-4086**

Introduction

The overall aim of the Habitats Directive is to maintain or restore the favourable conservation status of habitats and species of community interest. These habitats and species are listed in the Habitats and Birds Directives and Special Areas of Conservation and Special Protection Areas are designated to afford protection to the most vulnerable of them. These two designations are collectively known as the Natura 2000 network.

European and national legislation places a collective obligation on Ireland and its citizens to maintain habitats and species in the Natura 2000 network at favourable conservation condition. The Government and its agencies are responsible for the implementation and enforcement of regulations that will ensure the ecological integrity of these sites.

A site-specific conservation objective aims to define favourable conservation condition for a particular habitat or species at that site.

The maintenance of habitats and species within Natura 2000 sites at favourable conservation condition will contribute to the overall maintenance of favourable conservation status of those habitats and species at a national level.

Favourable conservation status of a habitat is achieved when:

- its natural range, and area it covers within that range, are stable or increasing, and
- the specific structure and functions which are necessary for its long-term maintenance exist and are likely to continue to exist for the foreseeable future, and
- the conservation status of its typical species is favourable.

The favourable conservation status of a species is achieved when:

- population dynamics data on the species concerned indicate that it is maintaining itself on a long-term basis as a viable component of its natural habitats, and
- the natural range of the species is neither being reduced nor is likely to be reduced for the foreseeable future, and
- there is, and will probably continue to be, a sufficiently large habitat to maintain its populations on a long-term basis.

Notes/Guidelines:

1. The targets given in these conservation objectives are based on best available information at the time of writing. As more information becomes available, targets for attributes may change. These will be updated periodically, as necessary.
2. An appropriate assessment based on these conservation objectives will remain valid even if the targets are subsequently updated, providing they were the most recent objectives available when the assessment was carried out. It is essential that the date and version are included when objectives are cited.
3. Assessments cannot consider an attribute in isolation from the others listed for that habitat or species, or for other habitats and species listed for that site. A plan or project with an apparently small impact on one attribute may have a significant impact on another.
4. Please note that the maps included in this document do not necessarily show the entire extent of the habitats and species for which the site is listed. This should be borne in mind when appropriate assessments are being carried out.
5. When using these objectives, it is essential that the relevant backing/supporting documents are consulted, particularly where instructed in the targets or notes for a particular attribute.

Qualifying Interests

** indicates a priority habitat under the Habitats Directive*

002262	Valencia Harbour/Portmagee Channel SAC
1140	Mudflats and sandflats not covered by seawater at low tide
1160	Large shallow inlets and bays
1170	Reefs

Please note that this SAC overlaps with Iveragh Peninsula SPA (004154). See Map 2. The conservation objectives for this site should be used in conjunction with those for the overlapping site as appropriate.

Supporting documents, relevant reports & publications (listed by date)

Supporting documents, NPWS reports and publications are available for download from: www.npws.ie/Publications

Title: Valencia Harbour/Portmagee Channel & Kilkieran Bay and Islands intertidal biotope survey

Year: 2011

Author: APEM

Series: APEM Scientific Report 411251 & 411341

Title: Subtidal Benthic Investigations in Valentia Harbour/Portmagee Channel cSAC (Site Code: IE002262) Co. Kerry

Year: 2011

Author: Aquafact

Series: Unpublished Report to NPWS & MI

Title: Reef Investigations in Valentia Harbour/Portmagee Channel cSAC (Site Code: IE002262), Co. Kerry

Year: 2011

Author: Aquafact

Series: Unpublished Report to NPWS & MI

Title: Surveys of sensitive subtidal benthic communities

Year: 2007

Author: MERC

Series: Unpublished Report

Title: Survey of the distribution of the anemone *Edwardsia delapiae* (Carlgren and Stephenson, 1928) in Valentia Harbour and Portmagee Channel SAC, Co Kerry

Year: 2007

Author: MERC

Series: Unpublished Report

Title: Broadscale mapping of Valentia Harbour and the Portmagee Channel (cSAC Site code 2262)

Year: 2003

Author: Aquafact

Series: Unpublished Report to NPWS & MI

Title: A survey of intertidal sediment biotopes in estuaries in Ireland

Year: 1997

Author: Falvey, J.P.; Costello, M.J.; Dempsey, S.

Series: Unpublished Report

Title: The BioMar biotope viewer: a guide to marine habitats, fauna and flora in Britain and Ireland

Year: 1997

Author: Picton, B.E.; Costello, M.J.

Series: Trinity College Dublin

Spatial data sources

Year:	Interpolated 2012
Title:	1995 BioMar Survey; 2002 broadscale mapping survey; 2007, 2010 subtidal surveys, 2010 intertidal survey
GIS operations:	Polygon feature classes from marine community types base data sub-divided based on interpolation of marine survey data. Expert opinion used as necessary to resolve any issues arising
Used for:	Marine community types, 1140, 1170 (maps 3, 5 and 6)
Year:	2005
Title:	OSi Discovery series vector data
GIS operations:	High Water Mark (HWM) polyline feature class converted into polygon feature class; clipped to SAC boundary. EPA WFD transitional waterbody data erased from extent. Expert opinion used as necessary to resolve any issues arising
Used for:	1160 (map 4)
Year:	2005
Title:	OSi Discovery series vector data
GIS operations:	High water mark (HWM) and low water mark (LWM) polyline feature classes converted into polygon feature classes and combined; EU Annex I Saltmarsh and Coastal data erased out if present
Used for:	Marine community types base data (map 6)

1140 Mudflats and sandflats not covered by seawater at low tide

To maintain the favourable conservation condition of Mudflats and sandflats not covered by seawater at low tide in Valencia Harbour/Portmagee Channel SAC, which is defined by the following list of attributes and targets:

Attribute	Measure	Target	Notes
Habitat area	Hectares	The permanent habitat area is stable or increasing, subject to natural processes. See map 3	Habitat area was estimated as 123ha using OSi data
Community distribution	Hectares	Conserve the following community types in a natural condition: Intertidal sand with nematodes and polychaetes community complex; and Medium to fine sand with <i>Nephtys cirrosa</i> and <i>Spiophanes bombyx</i> community complex. See map 6	Habitat structure was elucidated from intertidal survey undertaken in 2010 (APEM, 2011). See marine supporting document for further details

1160 Large shallow inlets and bays

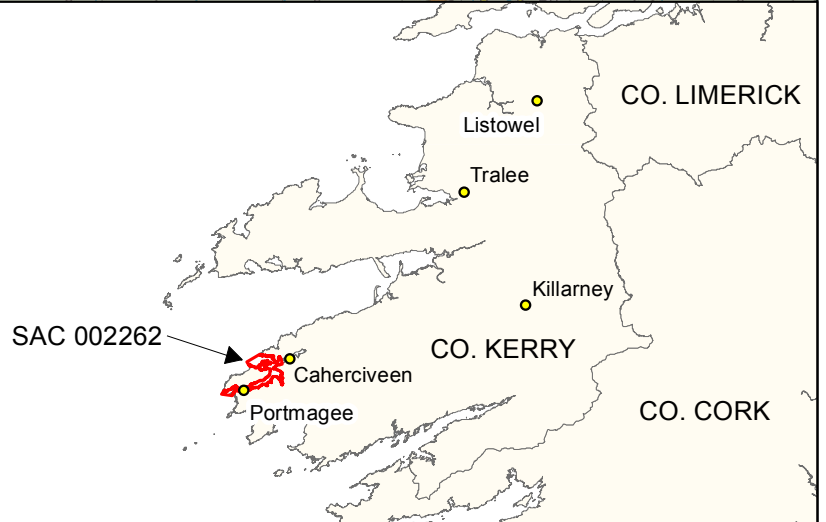
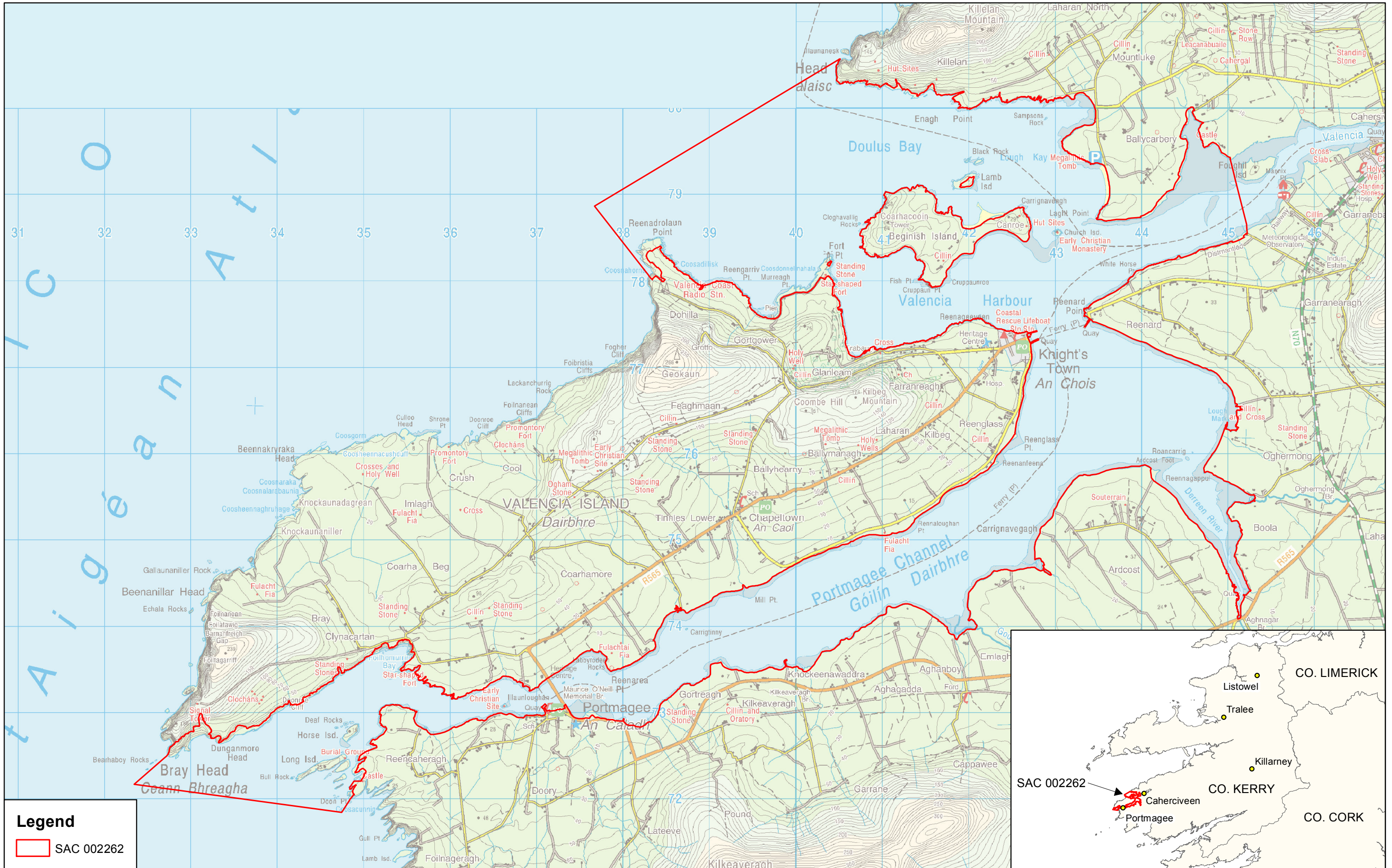
To maintain the favourable conservation condition of Large shallow inlets and bays in Valencia Harbour/Portmagee Channel SAC, which is defined by the following list of attributes and targets:


Attribute	Measure	Target	Notes
Habitat area	Hectares	The permanent habitat area is stable or increasing, subject to natural processes. See map 4	Habitat area was estimated as 2629ha using OSi data and the Transitional Water Body area as defined under the Water Framework Directive
Community extent	Hectares	Maintain the extent of the maërl- and <i>Zostera</i> -dominated communities and the <i>Edwardsia delapiae</i> associated community, subject to natural processes. See map 6	The likely extents of the maërl- and <i>Zostera</i> -dominated communities were derived from surveys undertaken in 2002 (Aquafact, 2003) and 2007 (MERC, 2007a; 2007b). The extent of the <i>Edwardsia delapiae</i> associated community is based on the 1995 BioMar survey (Picton and Costello, 1997) and the 2002 and 2007 surveys. See marine supporting document for further details
Community structure	Biological composition	Conserve the high quality of the maërl-dominated community, subject to natural processes	Area established from an acoustic mapping survey in 2002 (Aquafact, 2003) and a 2007 dive survey and underwater viewer observations (MERC, 2007b). See marine supporting document for further details
Community structure: <i>Zostera</i> density	Shoots per m ²	Conserve the high quality of the <i>Zostera</i> -dominated community, subject to natural processes	Described from 2007 dive survey and underwater viewer observations (MERC, 2007b). See marine supporting document for further details
Community structure	Biological composition	Conserve the high quality of the <i>Edwardsia delapiae</i> associated community, subject to natural processes	Derived from the 1995 BioMar survey (Picton and Costello, 1997) and 2002 (Aquafact, 2003) and 2007 (MERC, 2007a) surveys. See marine supporting document for further details
Community distribution	Hectares	Conserve the following community types in a natural condition: Intertidal sand with nematodes and polychaetes community complex; Medium to fine sand with <i>Nephtys cirrosa</i> and <i>Spiophanes bombyx</i> community complex; Coarse sediment with <i>Pisone remota</i> community complex; Sandy mud to mixed sediment with <i>Melinna palmata</i> community complex; Mixed sediment with <i>Chaetozone gibber</i> community complex; <i>Fucus</i> -dominated intertidal reef community complex; <i>Laminaria</i> -dominated community; and Echinoderm-dominated reef community complex. See map 6	The likely area of sediment communities was derived from acoustic mapping survey in 2002 (Aquafact, 2003) and intertidal and subtidal surveys in 2010 (APEM, 2010; Aquafact, 2011a, 2011b). See marine supporting document for further details

1170 Reefs

To maintain the favourable conservation condition of Reefs in Valencia Harbour/Portmagee Channel SAC, which is defined by the following list of attributes and targets:

Attribute	Measure	Target	Notes
Distribution	Occurrence	The distribution of reefs is stable or increasing, subject to natural processes. See map 5	Likely distribution was established by the 1995 BioMar Survey (Picton and Costello, 1997); broadscale mapping survey in 2002 (Aquafact, 2003); subtidal reef survey in 2010 (Aquafact, 2011b) and intertidal field observations
Habitat area	Hectares	The permanent area is stable or increasing, subject to natural processes	Likely area was established as 953ha by the 1995 BioMar Survey (Picton and Costello, 1997); broadscale mapping survey in 2002 (Aquafact, 2003); subtidal reef survey in 2010 (Aquafact, 2011b) and intertidal field observations
Community distribution	Biological composition	Conserve the following community types in a natural condition: <i>Fucus</i> -dominated intertidal reef community complex; <i>Laminaria</i> -dominated community; and Echinoderm-dominated reef community complex. See map 6	Based on the 1995 BioMar Survey (Picton and Costello, 1997); broadscale mapping survey in 2002 (Aquafact, 2003); subtidal reef survey in 2010 (Aquafact, 2011b) and intertidal field observations. See marine supporting document for further details



Legend
 SAC 002262

An Roinn Ealaíon, Oidhreachta agus Gaeltachta
 Department of Arts, Heritage and the Gaeltacht

**MAP 1:
 VALENCIA HARBOUR /
 PORTMAGEE CHANNEL SAC
 CONSERVATION OBJECTIVES
 SAC DESIGNATION**
 Map to be read in conjunction with the NPWS Conservation Objectives Document.

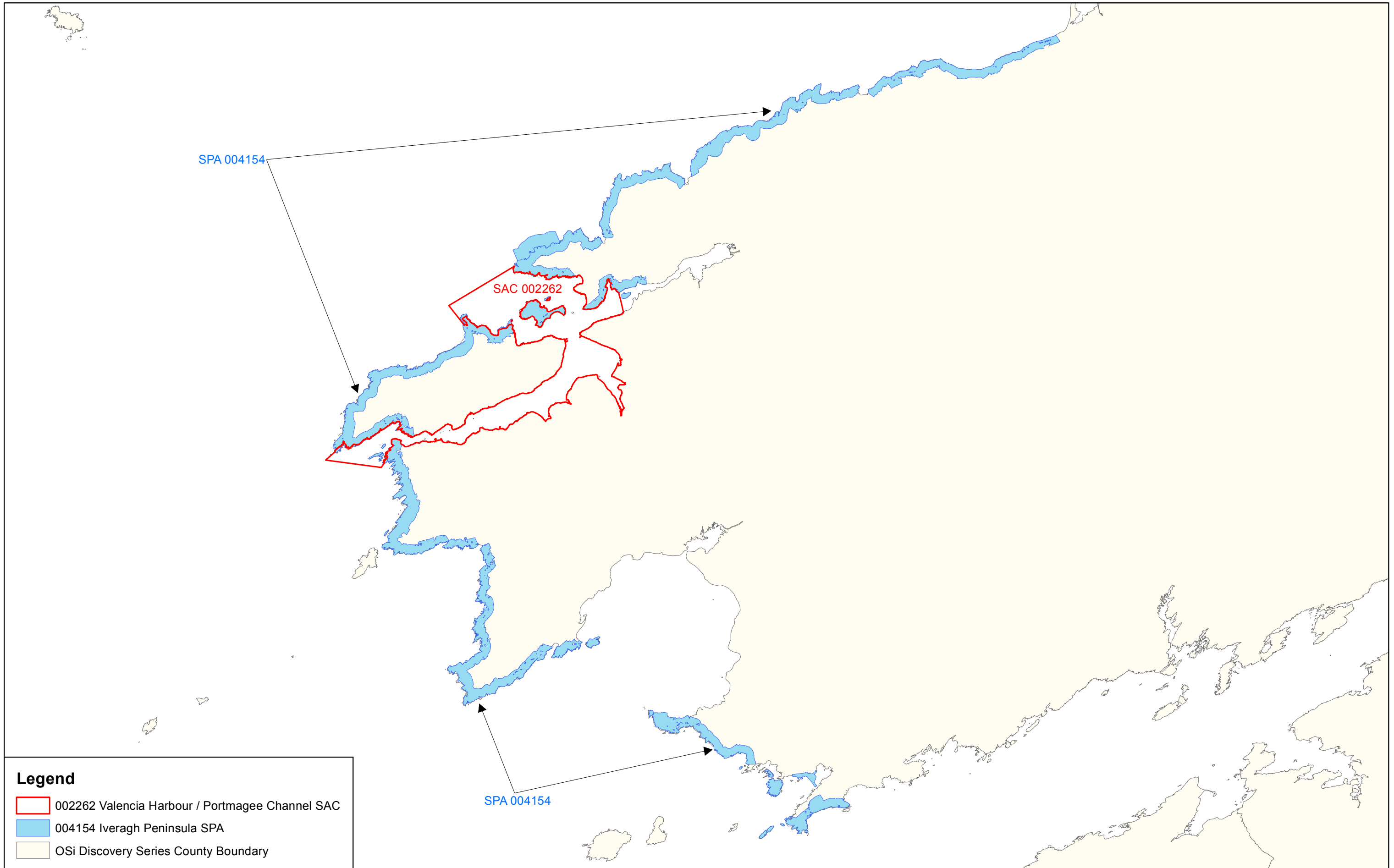
**SITE CODE:
 SAC 002262 CO. KERRY; version 1.01**

0 0.5 1 1.5 2 km

The mapped boundaries are of an indicative and general nature only. Boundaries of designated areas are subject to revision. Reproduced from Ordnance Survey material by permission of the Government (Permit number EN 0059208).

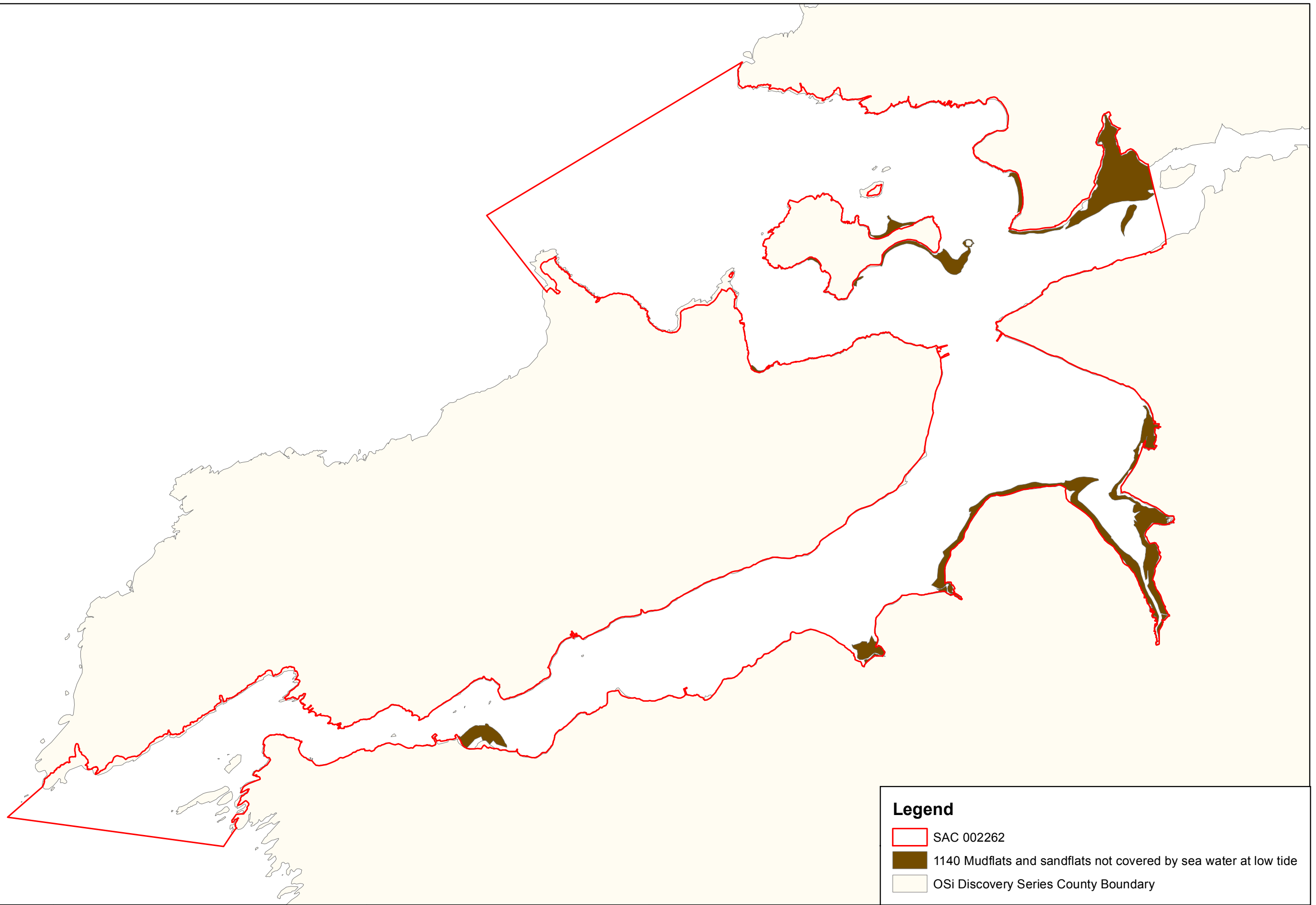
Níl sna teorainneacha ar na léarscáilleana ach nod garshuíomhach ginearálta. Féadfar athbheithnithe a déanamh ar theorainneacha na gceantar comharthaite. Macasamhail d'ábhar na Suirbhéarachta Ordoínáis le chead ón Rialtas (Ceadúnas Uimh. EN 0059208)

**Map Version 1
 Date: Sept 2012**



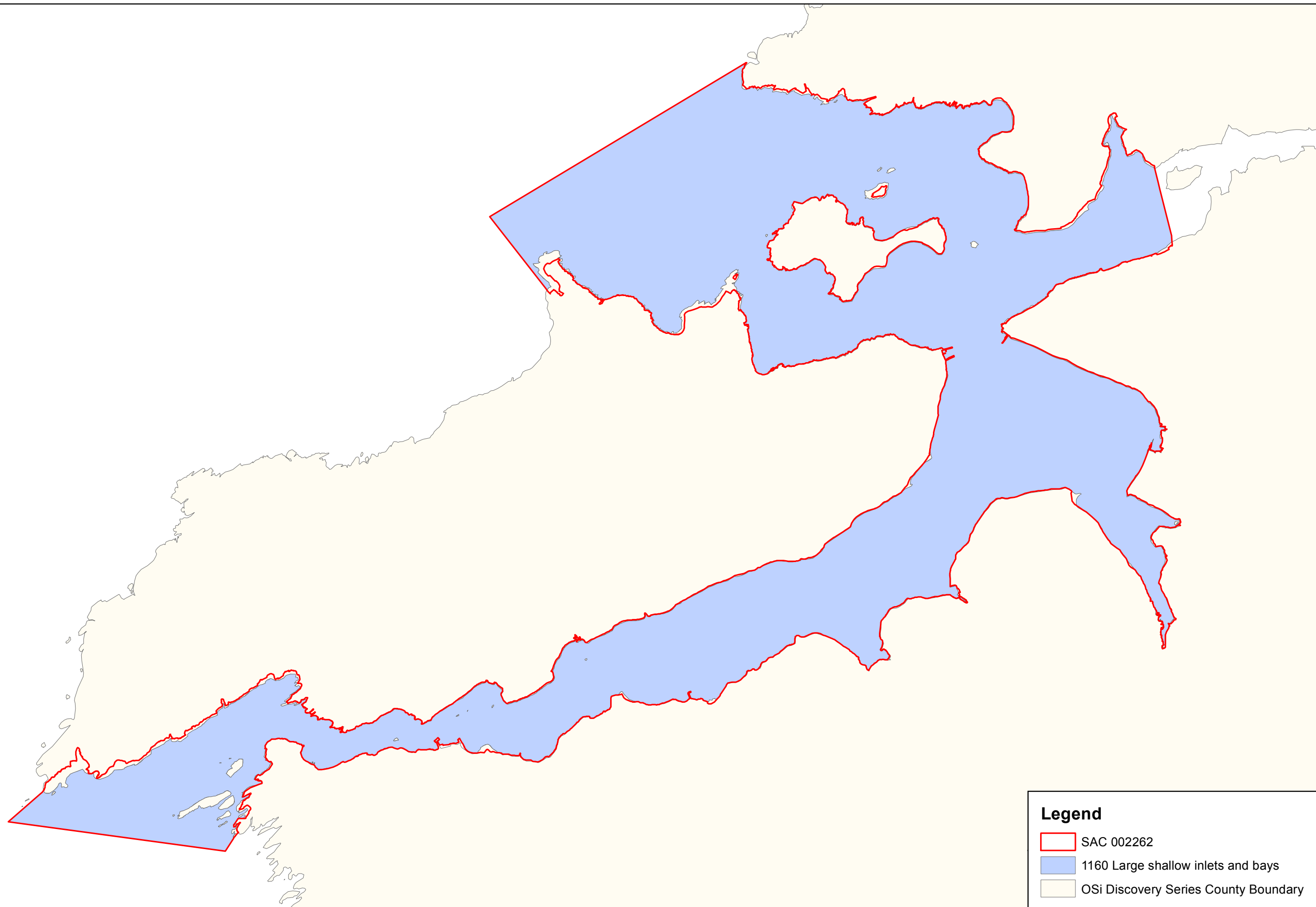
Legend

- 002262 Valencia Harbour / Portmagee Channel SAC
- 004154 Iveragh Peninsula SPA
- OSi Discovery Series County Boundary



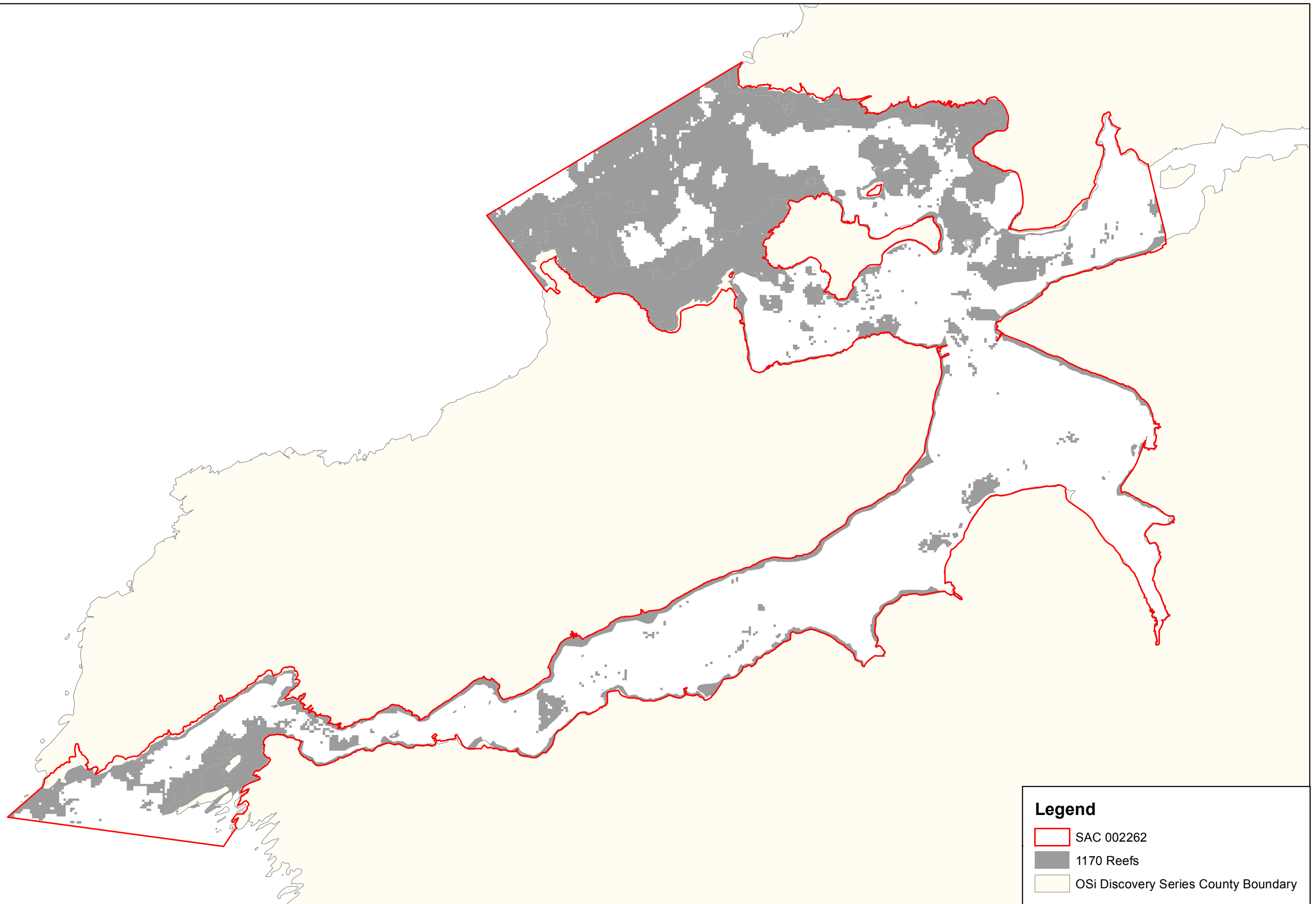
Legend

- SAC 002262
- 1140 Mudflats and sandflats not covered by sea water at low tide
- OSi Discovery Series County Boundary



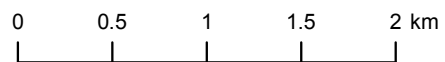
Legend

- SAC 002262
- 1160 Large shallow inlets and bays
- OSi Discovery Series County Boundary



Legend

- SAC 002262
- 1170 Reefs
- OSi Discovery Series County Boundary




Legend

 SAC 002262

 OSi Discovery Series County Boundary


Marine Community Types


 Coarse sediment with *Pisone remota* community complex


 Echinoderm-dominated reef community complex

 *Edwardsia delapiae* associated community

 *Fucus*-dominated intertidal reef community complex

 Intertidal sand with nematodes and polychaetes community complex

 *Laminaria*-dominated community


 Maerl-dominated community

 Maerl-dominated community / *Zostera*-dominated community

 Medium to fine sand with *Nephtys cirrosa* and *Spiophanes bombyx* community complex

 Mixed sediment with *Chaetozone gibber* community complex

 Sandy mud to mixed sediment with *Melinna palmata* community complex

 *Zostera*-dominated community

