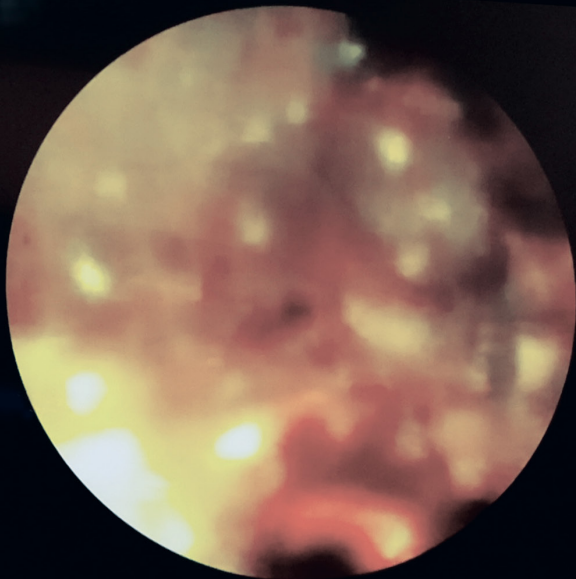




Northgate Technologies, Inc.



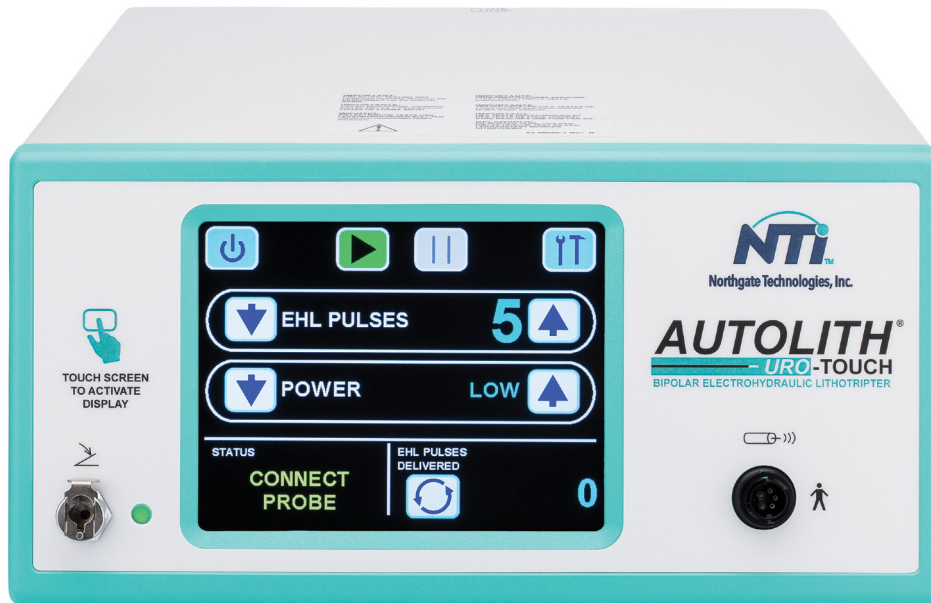
AUTOLITH[®] Uro-Touch

A Safe, Simple, Powerful Device
for Stone Management.



Introducing the AUTOLITH® Uro-Touch

The AUTOLITH® Uro-Touch System is an easy-to-use and effective renal calculi fragmentation device.



Key benefits of the AUTOLITH® Uro-Touch System

The AUTOLITH® Uro-Touch System delivers bipolar electrohydraulic lithotripsy (EHL) through flexible probes that are fully compatible with urologic endoscopic access systems for the kidney, ureter and urinary bladder.

The system offers two disposable probe designs (1.9 Fr and 9 Fr probe) developed to address minimally invasive urologic procedures. The AUTOLITH® Uro-Touch System touchscreen allows users to modify power levels and pulse settings with ease, and its software provides real-time usage statistics and probe replacement prompts.

- ✓ **Time-tested**
Legacy of cost-effective, safe, innovative lithotripsy devices
- ✓ **Portable**
Set up on mobile carts for plug-and-go versatility
- ✓ **Durable**
Reinforced 9 Fr probe tips to prevent degradation and help control unwanted lateral energy forces while fragmenting bladder stones
- ✓ **Physician controlled**
Foot pedal for power and pulse output
- ✓ **Effective**
Designed to fragment large and difficult renal calculi

Electrohydraulic Lithotripsy (EHL) Technology



EHL is a safe, effective and time-tested lithotripsy modality used by urologists for the endoscopic fragmentation of renal calculi including ureteral, kidney and bladder stones.

How it works

EHL Probe The physician threads the probe through a ureteroscope or cystoscope. The impacted stones are located in a **0.9 normal saline** filled endoscopic field and the probe is placed **1-2 mm away from the stone**.

Power Envelope The probe exposes the stone to micro-shockwaves (pulses) that deliver tiny, powerful bursts of energy. This isolated area of activity just beyond the probe tip is referred to as the power envelope.

Stone Fragmentation Using a foot pedal to control the number of pulses delivered, a physician can gradually and effectively break the stone into smaller pieces for easy removal.

EHL works for all urological stones



**Calcium Oxalate
Monohydrate Stone**
(Ureteral Stones)



Uric Acid Stone
(Bladder Stones)



EHL Probes

The probes used with the AUTOLITH® Uro-Touch System are disposable probes and available in two sizes. The probes provide the following benefits:

- Help control unwanted lateral energy forces
- Prevent burn back, a common problem with laser fibers
- Impede binding when passing through the delicate, flexible scope channels

AUTOLITH® Uro-Touch System

PRODUCT	DESCRIPTION	QTY.	PRODUCT NO.
AUTOLITH® Uro-Touch Lithotripter 100-240 VAC, 50/60 Hz	For Urologic Stone Fragmentation	1	9-203-00
EHL Probes Sterile, disposable bipolar probes	Ureteral Probe 1.9 Fr / 0.6 mm (Size) 120 cm (Length)	3 / box Sterile	9-203-1203
	Urinary Bladder Probe 9 Fr / 3.0 mm (Size) 54 cm (Length)	3 / box Sterile	9-203-0543
Pneumatic Foot Pedal			9-001-00
Hospital Grade Power Cord for U.S.			9-003-00
Extender Cable			9-004-00

For more information on Northgate Technologies, Inc.:

Call **1-800-348-0424** inside U.S.A. | 01-847-608-8900 Fax: 01-847-608-9405 outside of the U.S.A
Visit [ntisurgical.com/products/lithotripsy](https://www.ntisurgical.com/products/lithotripsy) | Email: customerservice@ntisurgical.com

Northgate® Technologies, Inc. is a U.S.-based company, ™/® trademarks are registered trademarks of, or are used under license by NORTHGATE® Technologies, Inc.

© 2018 Northgate Technologies, Inc. All Rights Reserved.

82-00039-1 REV. C



Northgate Technologies, Inc.