

OREGON EAST CASCADES ECOREGION

G1 and G2 Species Habitat Management Guidelines



INTRODUCTION

The Sustainable Forestry Initiative® (SFI) [2022 Standards](#) include requirements that promote and conserve Forests with Exceptional Conservation Value (FECV), which includes critically imperiled (G1) and imperiled (G2) species. This fact sheet summarizes the analysis of FECV habitat within this ecoregion and provides habitat management recommendations that would benefit species potentially found here.

HABITAT TYPES

- Forest Edge
- Meadows
- Mixed Conifer Forest
- River/Riparian

FOREST EDGE AND MEADOW MANAGEMENT

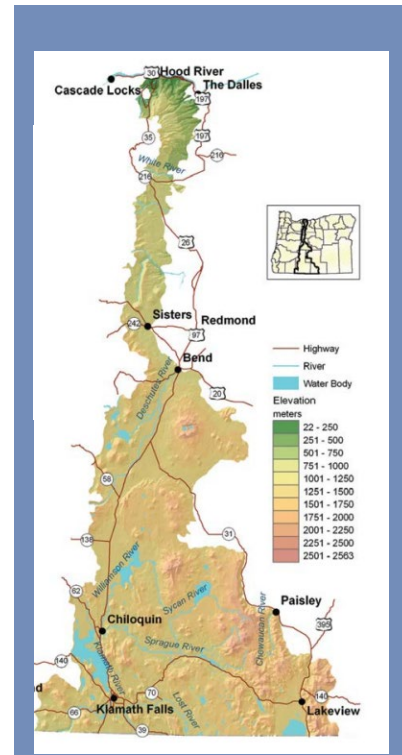
- Protect known locations
- Buffer special sites

MIXED CONIFER FOREST MANAGEMENT

- Protect known locations
- Retain legacy trees, stumps, and logs
- Retain large diameter trees with cavities or broken tops
- Leave skips and gaps with dense shrub component
- Retain large slash into piles

RIVER/RIPARIAN MANAGEMENT

- Protect known locations
- Maintain well vegetated riparian buffers
- Plant a diversity of both hardwood and conifer trees in the riparian zone
- Retain large diameter trees near streams and rivers
- Buffer wetlands, springs, and headwater areas



East Cascades Ecoregion



Oregon spotted frog

All management recommendations assume that operators and land managers are following all applicable BMPs, laws, and regulations.

OREGON EAST CASCADES ECOREGION

G1 and G2 Species Habitat Management Guidelines



SCIENTIFIC NAME	COMMON NAME	HABITAT	Status
<i>Ranunculus tritermatus</i>	Dalles Mt. buttercup	Forest Edge	G2
<i>Castilleja collegiorum</i>	Collegial paintbrush	Meadows	G1
<i>Vertigo dalliana</i>	Horseshoe vertigo (snail)	Mixed Conifer Forest	G1
<i>Ribes erythrocarpum</i>	Crater Lake Currant	Mixed Conifer Forest	G2
<i>Vespericola depressus</i>	Columbia Gorge hesperian (snail)	Mixed Conifer Forest	G2Q
<i>Prophysaon sp. 1</i>	Klamath tail-dropper (slug)	Mixed Conifer Forest	G2Q
<i>Juga hemphilli</i>	Barren juga	River/Riparian	G1
<i>Juga sp. 2</i>	Blue Mountains juga (snail)	River/Riparian	G1
<i>Planorbella oregonensis</i>	Borax Lake ramshorn (snail)	River/Riparian	G1
<i>Fluminicola sp. 2</i>	Casebeer pebblesnail	River/Riparian	G1
<i>Fluminicola sp. 3</i>	Diminutive pebblesnail	River/Riparian	G1
<i>Fluminicola sp. 4</i>	Fall Creek pebblesnail	River/Riparian	G1
<i>Fluminicola fremonti</i>	Fremont Pebblesnail	River/Riparian	G1
<i>Helisoma newberryi</i>	Great Basin ramshorn	River/Riparian	G1
<i>Colligyrus depressus</i>	Harney Basin duskysnail	River/Riparian	G1
<i>Pyrgulopsis sp. 9</i>	Klamath Lake springsnail	River/Riparian	G1
<i>Fluminicola sp. 8</i>	Lost River pebblesnail	River/Riparian	G1
<i>Pyrgulopsis sp. 7</i>	Lost River springsnail	River/Riparian	G1
<i>Fluminicola sp. 10</i>	Metolius pebblesnail	River/Riparian	G1
<i>Fluminicola sp. 11</i>	Nerite pebblesnail	River/Riparian	G1
<i>Fluminicola sp. 12</i>	Odessa pebblesnail	River/Riparian	G1
<i>Fluminicola sp. 13</i>	Ouxy Spring pebblesnail	River/Riparian	G1
<i>Hesperoleucus mitrulus</i>	Pit roach	River/Riparian	G1
<i>Fluminicola klamathensis</i>	Tall pebblesnail	River/Riparian	G1
<i>Fluminicola sp. 15</i>	Tiger lily pebblesnail	River/Riparian	G1
<i>Fluminicola sp. 16</i>	Toothed pebblesnail	River/Riparian	G1
<i>Catostomus warnerensis</i>	Warner sucker	River/Riparian	G1
<i>Fluminicola sp. 18</i>	Wood River pebblesnail	River/Riparian	G1
<i>Grylloblatta newberryensis</i>	Newberry ice crawler	River/Riparian	G1
<i>Pyrgulopsis archimedis</i>	Archimedis springsnail	River/Riparian	G1G2
<i>Fluminicola fresti</i>	Frest's pebblesnail	River/Riparian	G1G2
<i>Vorticifex klamathensis</i>	Ramshorn (snail)	River/Riparian	G1Q
<i>Juga sp. 7</i>	Three-band juga (snail)	River/Riparian	G1Q
<i>Fluminicola fuscus</i>	Columbia pebblesnail	River/Riparian	G2
<i>Fluminicola sp. 20</i>	Crooked Creek pebblesnail	River/Riparian	G2
<i>Fluminicola sp. 5</i>	Klamath pebblesnail	River/Riparian	G2
<i>Rana pretiosa</i>	Oregon spotted frog	River/Riparian	G2
<i>Cryptomastix devia</i>	Puget oregonian (snail)	River/Riparian	G2
<i>Fluminicola multifarius</i>	Shasta pebblesnail	River/Riparian	G2
<i>Meconella oregana</i>	White meconella	River/Riparian	G2
<i>Deltistes luxatus</i>	Lost River sucker	River/Riparian	G2
<i>Juga sp. 1</i>	Basalt juga (snail)	River/Riparian	G2Q
<i>Cryptomastix hendersoni</i>	Columbia Gorge oregonian (snail)	River/Riparian	G2Q
<i>Juga acutifilosa</i>	Scalloped juga (snail)	River/Riparian	G2Q
<i>Perideridia erythrorhiza</i>	Red-root yampah	River/Riparian	G2

*Species links provided when available

All management recommendations assume that operators and land managers are following all applicable BMPs, laws, and regulations.