

ARAB INSTITUTE
FOR TRAINING & RESEARCH IN STATISTICS



المعهد العربي
للتدريب والبحوث الإحصائية

الهيكل التنظيمية للأجهزة الإحصائية في الدول العربية

ARAB INSTITUTE
FOR TRAINING & RESEARCH IN STATISTICS



المعهد العربي
للتدريب والبحوث الإحصائية

الهيكل التنظيمية للأجهزة الإحصائية في الدول العربية

2008 1429 ©

.2008

11185 851104 . . .

(962) 6 582 3405 :

diwan@aitrs.org :

(962) 6 582 0327 :

<http://www.aitrs.org> :

-	
1	-
4-1	-
7-5	-
12-7) (-
15-12	-
16-15	-
17-16	-
23-17	-
24	-
39-24	-
45-40	-
54-46	-
65-54	-
68-66	-
72-69	-
88-74	-
95-90	-
96	-

2008

2007 2006

"

"

-

-

-

-

-

-

: -
1

2007

2007 13-12

.2008 ()
2

: -
3

4

5

1939
1959

(1)

2

(1)

	1966 24 -1		1950 24					1
	1966 106 -2							
	-		1974 9					2
	5 1977 11							
	9 1983	1977 7						
	2002 38 1984	1977 7						3
	2004 3 2003 9							
			1999 32					4
	1994 1 -1							
	1995 159 -2		1982 484					5
	-		1379 212					6
	2003	1970	1970 -					7
		2004						
	1968 87		1960 35					8
	1983 97		1972 21					9
			2001 29					10

	5	1950	24	-1	31	1947	31	11
		1994	995	2000				
	1982	9		-1		1980	12	12
		2007	25	-2				
		1976	63	-1	23			
	1299			-2	1963	1963	27	13
		1995		1995				
		1980	2728	-1		1979	1793	14
		1992	49	-2				
		1994	4		16			
					1963	1963	16	15
		1960	87	-1	35			
	2086	743	1960	1345		1960	35	16
		1964	238	1963				
				1964				
				2915				
	397					1942	1539	17
				2002				
		-				2005	17	18
		-				1995	28	19

-

6

7

8

9

()

10

11

6

12

-
:
-
13

14

()

2006

(2)

*(2)

5	. (2002)	10	. (2002)	(10)	(2004)	10	.
			.(2006)	./ (2006)		.(2002)	
				.(2007)	. (2005)	10	.
				.(2007)	10	. (2001)	10
	. (2000)	. (1999)	10	. (2004)	10	.	
	.(1999)	5	. (1998)	5	. (1999)	5	
	.(2003)	. (1978)	. (1964)	(1993)	10	.	
(2006)	. (2007)	. (2004)	10	. (2004)	10	.	
			. (2004)	.	.	.	
	. (2006)	. (2001)	10	. (1997)	10	.	
	.(2006)	. (2006)	. (2007)	. (2004)	.	.	
(2006)	3	. (2006)	. (2004)	4	. (1997)	10	.
					.(2006)	.	
5 (2004)	10	.	
				.(2007)	.	.	
	.(2005)	. (2000)	. (1970)	(2005)	10	.	
		.(2004)	. (2004)	. (2004)	. (1998)	.	
10	. (2003)	10	. (2001)	10	. (2006)	10	.
		.(2006)	10	. (2001)	10	. (2003)	
	.(2005)	. (2001/2000)	5	(2006)	10	.	
	. (2007-2008)	. (1996)	10	. (2004)	10	.	
					.(2006)	10	
5	. (1997)	5	. (2003)	5	. (2004)	10	.
					.(2006)	.	

.2007

/

*

:

:

:(...)

(3)

...

.

(3)

(1)

10	-3 1998	10	-2 2005	-1						1
	-6 2007/2	-5 2006	/	-4 2006						
				2006						
				-2 2007						2
										3
2003	3	- 3		-2						4
										5
2005	3	-3 2006	- 2 2006	3						6
-2005		-2 2006-2005	5							
	1/6 - 31/3		-4 2005							7
			30/5 -1/4							
- 4 2006	-	-3 2006		-2 2006						
-	- 7 2003	3	-	- 5 2006						8
2007	-11 2006	-	-10 2006	-	-9 2006	-	-8 2006			
				2005	-13 2005		-12			
	2004	-3 2005	-2 2006	5			-1			9
-	-	-	-)			-2			10
							-3 (
										11
	-4 2004	-3 2003	-2 2004	" "			-1			12
							2007			
		-3 2005		-2 2006			-1			13
							2005			
		-2 2001/2000	10				-1			
	-4 .2006						-3 2007/2006			14
	-6 . 2007						-5 2007			
1990	-3 2004	1997	PAPFAM	-2 1999	1992		-1			
-7 2006	1990	-6 2006	1990	-5 2006	1990		-4 2006			15
							2006 1990			

-12

(1)

.2007

2007/11/13

-
1/ 17

2007

(%57)

-
2/17

2006
(731)

(968)

(320)

2007
(75)

18

-
19

20-15

1/19

2/19

2003

2006

2005

.2006

21

"

" (Paris 21)

21

2007 /

3/19

:

"

21

"

"

"

:

" "

•

:

.1

... ..

.2

.3

.4

.5

.6

:

... ..
"

•

:

"

{

.1

.2

(%87) (1)

-
20

21

22

-
23

24

25

26

:

-
27

28

29

...

30

(1)

31

(8366)

2006

(%45)

/

(1)

/2007/11/13-12

2008

(1)

%75

(2007 2006)

(2007·2006)

%54 %53

%65

%75

(4)

2007 2006

(4)

%	2007				2006				
	%				%				
14.6	84.73	642	98	544	73.91	598	156	442	
5.2	87.75	49	6	43	83.38	31	5	26	
0.6	95.83	48	2	46	95.23	42	2	40	
-4.0	65.07	524	183	341	67.81	466	150	316	
-	76.03	434	104	330					
1.6	54.15	759	348	411	53.25	738	345	393	
	75.70	317	77	240	75.70	321	78	243	
-6.8	77.30	119	27	92	82.90	117	20	97	
-13.2	80.61	98	19	79	92.85	84	6	78	
	75.33	8249	2035	6214	75.39	8523	2097	6426	
-2.3	87.98	741	89	652	90.63	705	66	639	
% 0.3	75.05	11980	2988	8992	74.83	11625	2925	8700	

/2007 2006

(1)

.2008

%6.59 %5.88

2007 2006
% 62.95 %63.42

%6.5

%3.4

%2.0

%15

(5)

.2007 2006

(5)

2007 2006

2007	2006	2007	2006	2007	2006	2007	2006	2007	2006	2007	2006	2007	2006	2007	2006	
642	598	110	74	47	91	20	35	61	68	65	60	163	120	176	150	
43	31	7	5	5	4	1	-	-	5	5	2	13	9	12	7	
48	-	24	-	5	-	-	-	-	-	-	-	7	-	12	-	
524	466	230	195	58	57	1	1	13	13	22	21	100	99	100	80	
759	738	179	175	33	32	20	20	93	93	30	30	168	164	236	224	
240	243	71	72	22	22	13	14	13	14	23	23	81	81	17	16	
119	117	33	30	1	1	-	-	9	9	11	11	31	32	34	34	
85	84	19	19	4	4	2	2	2	2	5	5	45	44	8	8	
8249	8523	766	813	534	584	140	140	138	183	173	176	6385	6560	68	68	
652	639	287	287	40	40	17	17	6	6	57	57	159	146	86	86	
11361	11439	1726	1670	749	835	214	229	335	393	391	385	7152	7255	749	673	
%100	%100	15.19	14.59	6.59	6.54	1.88	2.00	2.94	3.43	3.44	3.36	62.95	63.42	6.59	5.88	

2007 2006

%3.0 - %2.6

%50

%31

.2007·2006

%15

(6)

.2007 2006

2007	2006	2007	2006	2007	2006	2007	2006	2007	2006	2007	2006	2007	2006	
642	598	78	71	154	148	374	347	8	8	23	21	3	3	
43	31	5	5	2	2	26	19	4	1	3	3	3	2	
48	-	18	-	8	-	12	-	2	-	4	-	4	-	*
524	466	265	230	63	62	187	166	-	-	8	7	1	1	
759	738	358	353	78	78	299	286	4	4	17	15	3	2	
240	243	38	32	47	46	137	139	6	6	21	20	1	-	
119	117	11	7	33	33	69	71	3	3	2	2	1	1	
85	84	40	40	8	8	34	33	1	1	2	2	-	-	
8249	8523	674	721	3045	3139	4362	4493	104	105	57	55	7	10	
652	639	287	284	93	93	239	226	13	13	16	16	4	4	
11361	11439	1774	1743	3531	3609	5739	5780	145	141	153	141	27	23	
%100		% 15.0		% 31.0		% 50.5		% 3.0 - % 2.6						

2007 2006 1120 862
309 295

.2007 2006

(7)

.2007 2006

	2007	2006	2007	2006	2007	2006	
	-	-	320	-	75	-	
	3	2	23	18	17	3	
	4	1	26	20	-	-	
	19	15	350	364	170	150	
	20	20	420	404	417	272	
(*)	78	72	-	-	*144	*165	
	4	5	13	11	42	8	
	8	8	15	10	65	52	
	173	172	-	-	12	18	
	-	-	-	-	178	194	
	309	295	1167	827	1120	862	

:

-

-

32

(15)

(%79)

(1)

(%87)

2007

33

...

34

/

(1)

/ 2007/11/13-12

1/35

2/35

(PDA)

3/35

(15)

(%67) 2007

(%97)

(%47)

(%57)

:

:

:

-

-

-

:

-

:

:

-

:

:

-

-

:

-

:

-

-

(1)

: 2/36

/

:

(2)

: 3/36

:

:

(3)

: 4/36

:

(4)



: 5/36

: -

: -

-

-

-

-

(5)

: 6/36

:

: -

-

(6)

: 7/36

:

:

: -

:	:	-
.	:	-
:	(7)	
:	:	8/36
:	:	-
:	:	•
.	:	•
.	:	•
:	:	•
:	:	•
:	:	-
:	:	•
:	:	•
:	:	•
.	:	-
.	:	
.	:	

(8)

:
:
-
.
.
.
.
:
-
.
.
.
.
:
-
.
.
.
.
:
-
.
.
.
.
:
-
.
.
.
.

(9)

: 10/36

:

:

:

{

•
•
•

-

:

.

-

-

•

•

•

-

:

{

•
•
•

-

:

:

{

•
•

-

:

{

•
•

-

:

.

-

•

-

•

(10)

:

11/36

:

:



-
-
-
-
-
-
-

(11)

12/36

-
-
-
-
-

(12)

13/36



: -
•

•

•

•

: -
•

•

•

•

•

: -
•

•

•

•

-

-

•

•

•

•

(13)

:

14/36

:

:

-

-

-

-

-

(14)

:

:

:

:

:

:

:

:

:

•

•

•

•

•

•

•

•

•

•

•

•

•

•

•

•

•

•

•

•

•

•

•

•

•

-
-
-

(15)

37

:
:

1/37

" 1999 32

-

"

" -

"

" -

:

"

/

-

/

-

/

-

/

-

:

2/37

-

/

-

/

-

024-2006

:

3/37

-

-

-

-

-

-

-

-

(1) () : 4/37
(2001 /29)

:

•

■

■

■

•

■

■

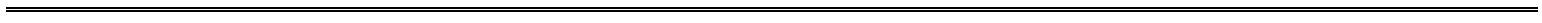
■

•

■

■

■



■

●

-

-

(9)

-

:

●

●

●

●

●

(16)

:

-
1/38
-
1997

(440)

(33)

-
-
-
-
-
•
•
•

(CSO)

.1

1972

.(FBS)

1981

:

.2

-

-

-

-

-

-

-

-

-

(FBS)

.3

:

:

()

•

•

•

•

•

•

:

()

•

•

•

(2)

... (Computer linked Areas)

(3)

15

(General Phase)

-

15

(Specialization Phase)

-

:Central Statistical Organization (CSO)

:

(1)

(2)

National Industrial)

... (Classification

(3)

:Department of Statistics, Malaysia(DOSM)

4 /38

(DOSM)

(BNN)

:

:

-

-
-
-
-

:

:

14

:

2007

(1)

:

-

39

Australian Bureau of Statistics (ABS)

1/39

1974

:

(ABS)

-

(Groups)

-



:	:	•	■
:	:	✓	
:	:	✓	
:	:	✓	
:	:	✓	
:	:	✓	
:	:	✓	
:	:		■
:	:	•	
:	:	✓	
:	:	✓	
:	:	✓	
:	:	✓	
:	:	✓	
:	:		■
:	:	•	
:	:	✓	
:	:	✓	
:	:	•	
:	:	✓	
:	:	✓	
:	:	✓	
:	:	✓	
:	:	•	
:	:	✓	
:	:	✓	
:	:	✓	
:	:	✓	



:

•

✓

✓

✓

:

•

✓

✓

✓

✓

.

(2)

:Italian National Institute of Statistics

2/39

.

:

:

-

:

▪

.

•

•

•

:

▪

•

•

•

:

▪

•

•

•

:

-

▪

▪

▪

:

-

-
-
-
-
-
-

:

-
-

(3)

:Statistics Denmark's Organization

3/39

.()

-

(24)

-

-

:

:

▪

-
-
-
-
-
-
-
-
-
-

:

▪

-
-
-

-
-
-
-
-
-
-
-
-
-
-
-
-
-
-

:

■

:

■

-

(Stat Bank Denmark)

-

(4)

Statistics Sweden Organization

4/39

:

-

■

■



■

■

■

■

■

:

-

■

■

■

■

■

(ICO)

■

:

-

■

■

■

■

■

■

2002

()

:

(5)

:U.S Census Bureau

5/39

1995 104 (13)

:

•
•
•

:

-

-

:

:

■

•
•
•

:

■

•
•
•

:

■

•
•

:

:

:

2010

:

12

:

/

:

/

•

•

•

■

•

•

•

•

•

•

•

•

■

•

•

•

■

•

•

•

■

•

•

•

•

■

•

•

•

•

-
- -
 -
 -

(6)

-

1/40

2/40

3/40

4/40

:

-

-

-

-

-

-

-

-

-

...

-

-

-

-

:

: (1)

.

.

()

.

()

()

()

()

: (2)

.

.

.

: (3)

17

-



-

-

: (4)

-

()

3 -

5 -

: (5)

6 -

10

3

3 -

() 3 -

: (6)

10

-

-

-

: (7)

-

-

-

(8)

(8)

	()	()	()	
-1	.() 1 . () 1 1	440 33	19	6
-2	.() 24 1 .() 1 ()	() () () ()	1 1 1	7 6
-3		5	4	
-4	() () 1 2 ()	()) ()	1 1 () 2 ()	17 () ()
-5				

	()	()	()	
-6	5	3	9	.4
-7		1	9 ()	
-8	() 3 2 ()	() 3 () 1 ()	6 10 3	.5
	5	() 2 1 () 1	8 10	.6
	5	() 3 () 1	18 ()	.7

(9)

(9)

(*)

()										
								24 1950		
								9 1974		
								7 1977		
-								1999 32		
-								1982 484		
								212 1379		
-								1970		

2 2								35 1960		
-								21 1972		
								29 2001		
-								31 1947		
								12 1980 2000 5		
								27 1963		
								1793 1979		
								h 16 1963		

-								35 1960		
								2002 1639		
-		لا تتوفر معلومات	لا تتوفر معلومات					24 2006		
-								1995 28		
()										
-								1997 16		
								1972		
								1981		
								1953	-	
									-	

()										
								/		
								-		
								104/13 1995		

(1) (*)

(2)

(3)

:

-

:

:

(1)

(2)

(3)

(4)

(5)

(6)

(7)

(8)

(9)

(10)

(11)

:

-

-

-

-

-

-

-

-



-

-

-

-

-

-

-

-

-

" "

-

:

(1)2007

-

(1)

:

•

•

•

•

•

:

}

-

-

-

-

(1)

/ 2007/11/13-12

(2)

(3)

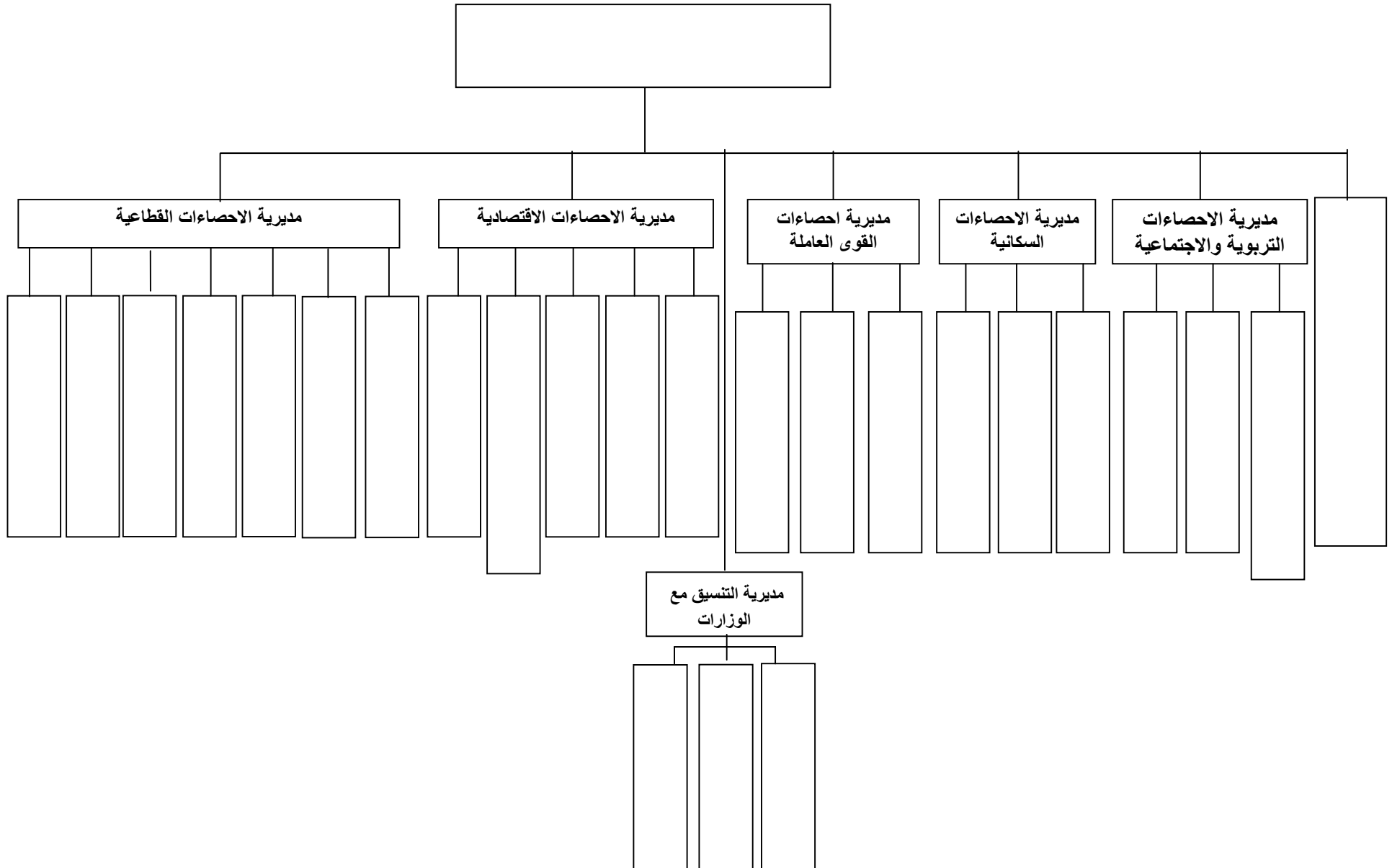
(4)

(5)

(1)

.()

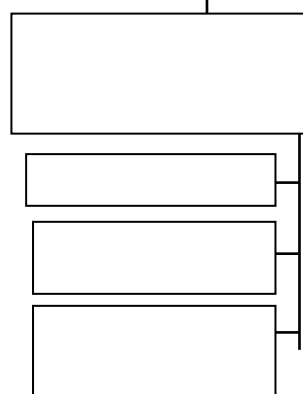
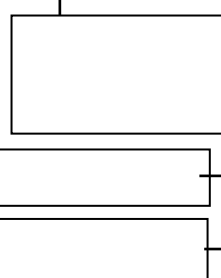
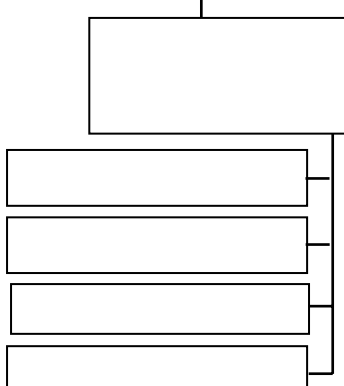
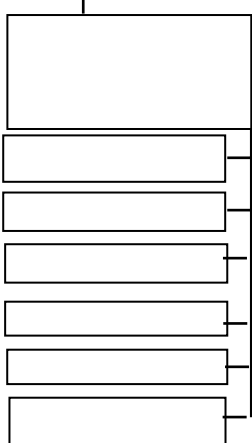
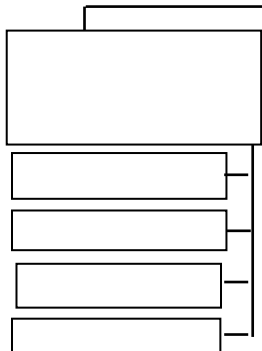
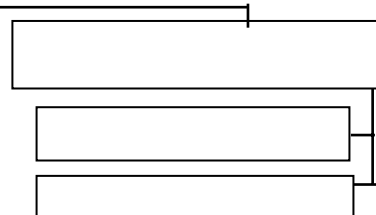
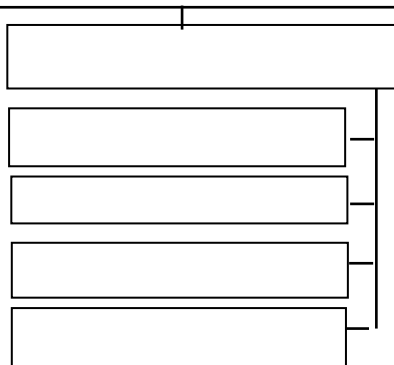
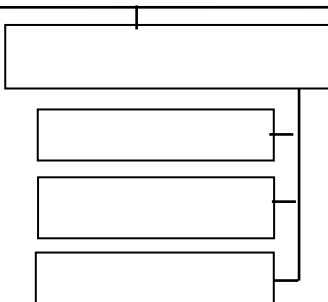
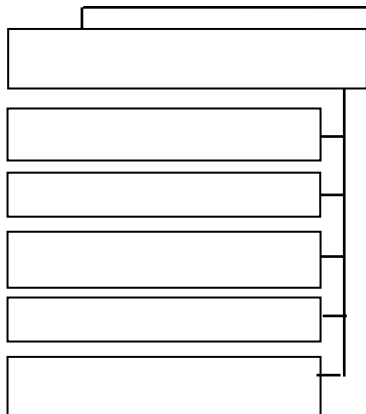
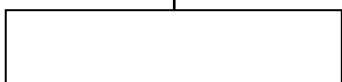
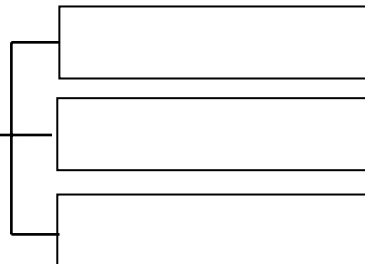
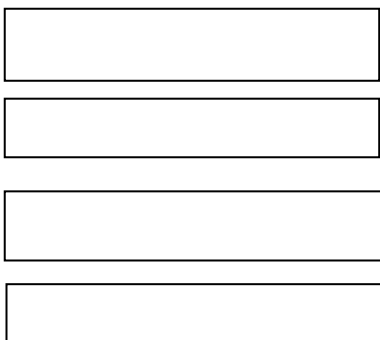
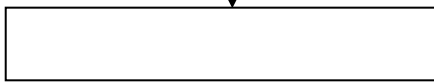
(2)



74		1
75		2
76		3
77		4
78		5
79		6
80		7
81		8
82		9
83		10
84		11
85		12
86		13
87		14
88		15

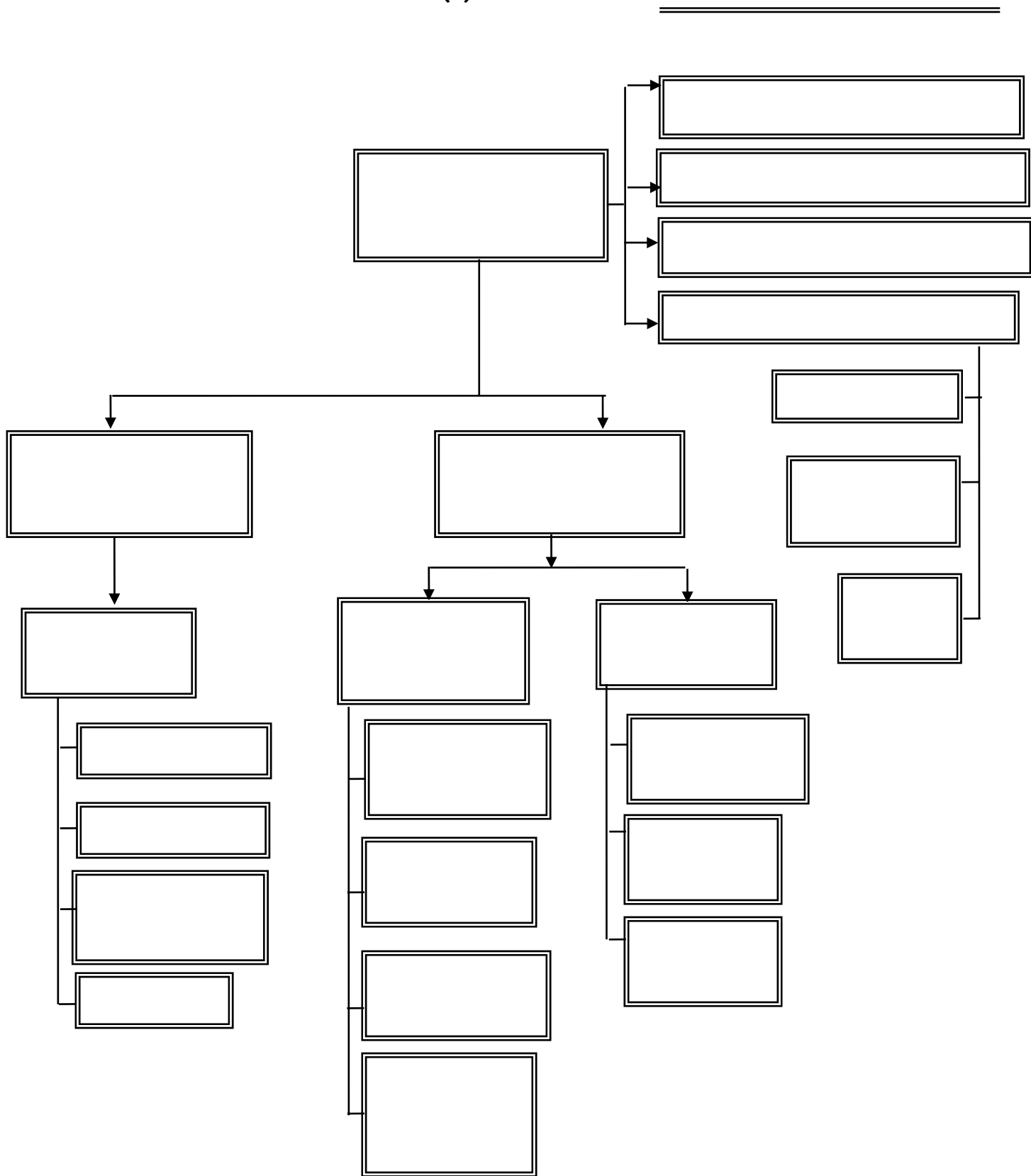
(1)

(*)

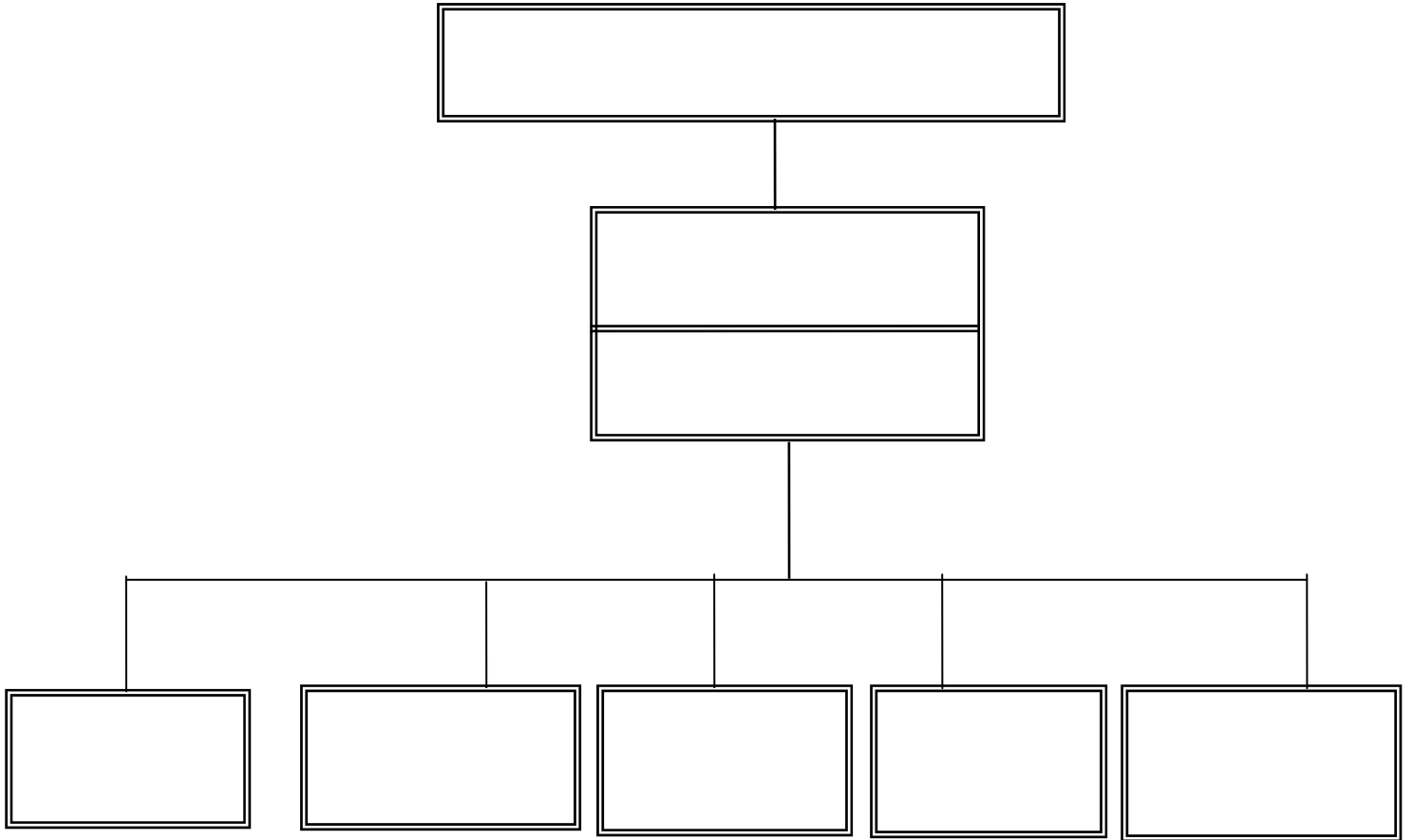


(*)

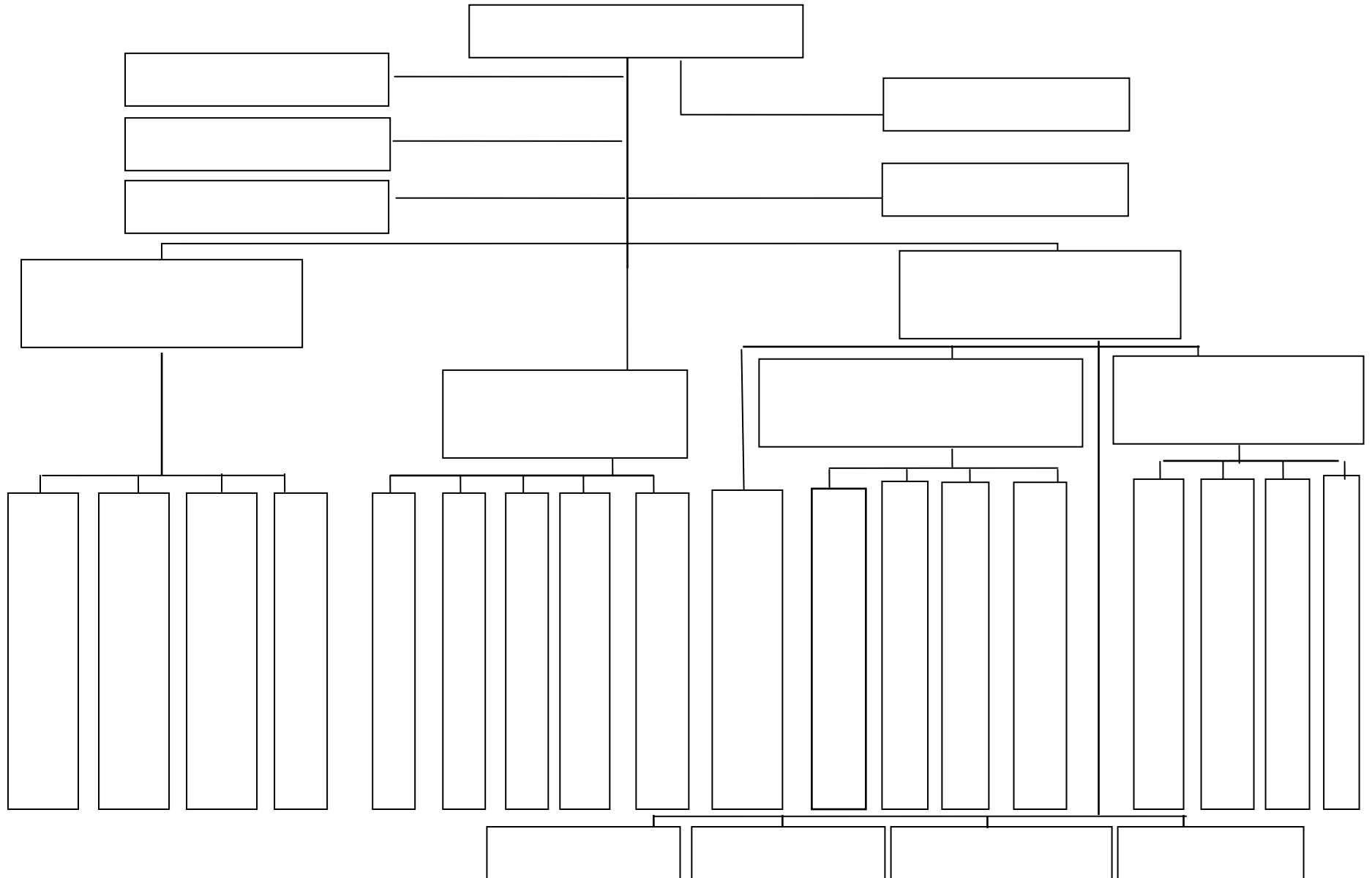
(2)



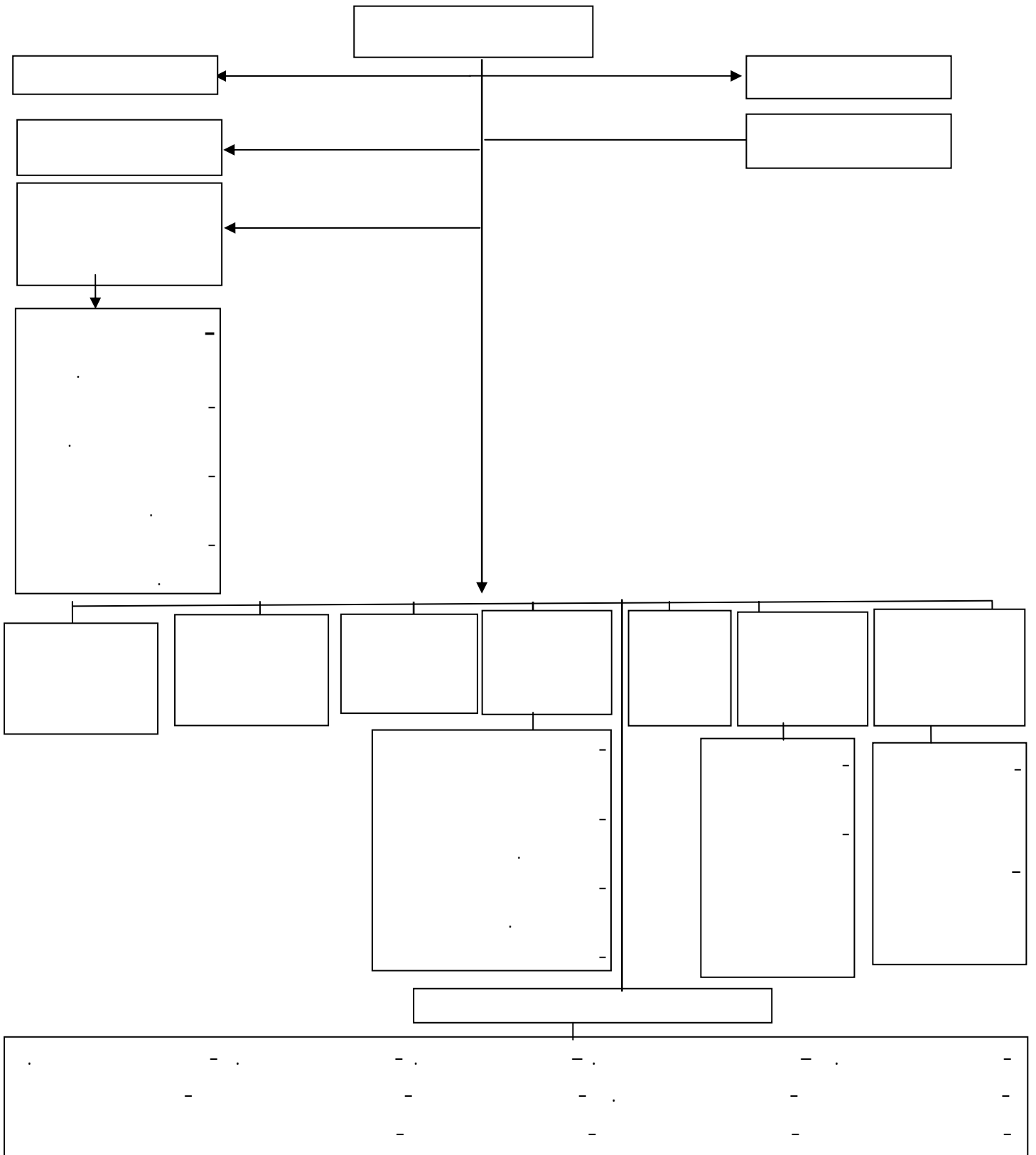
(3)



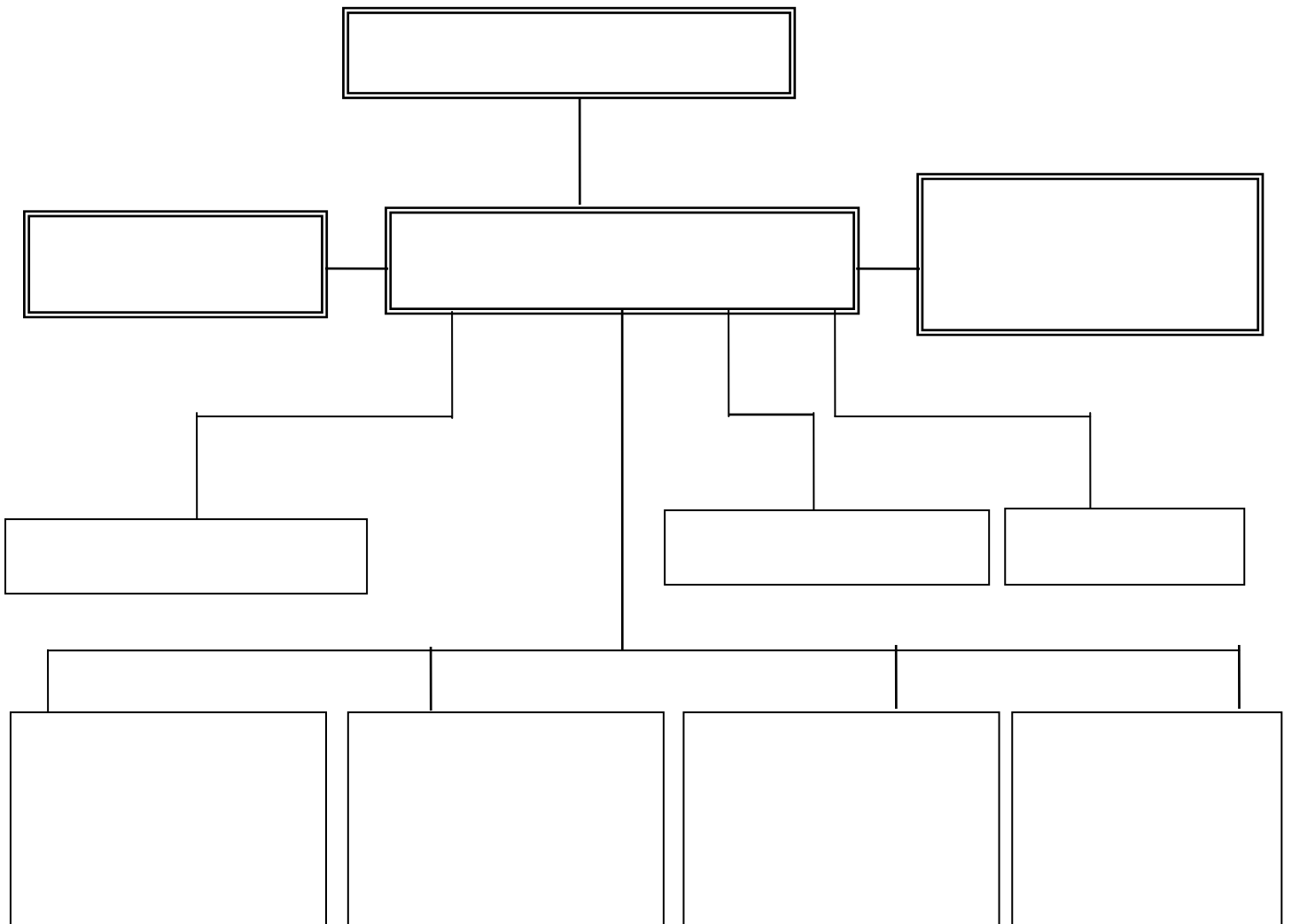
(4)



(5)

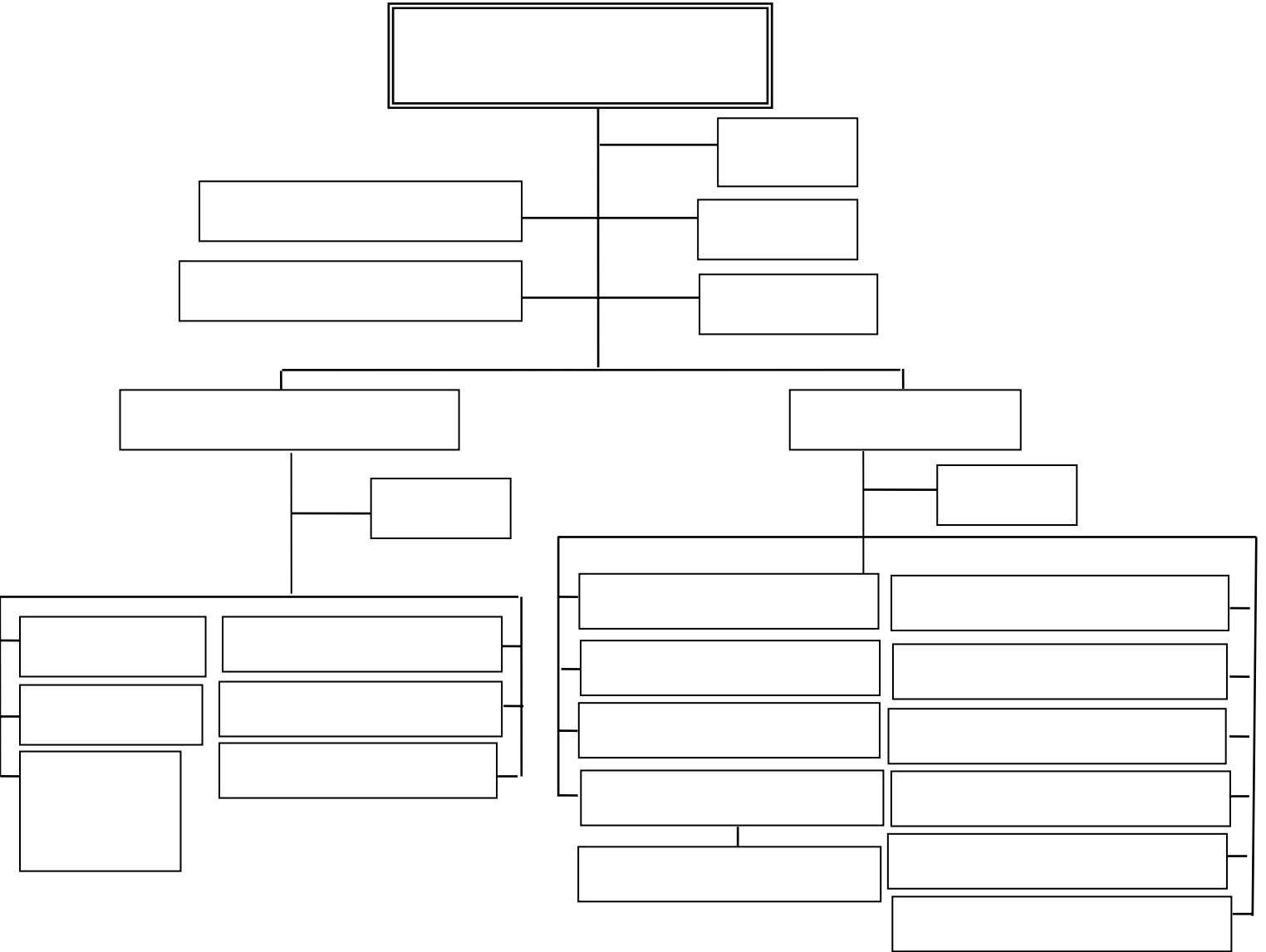


(6)

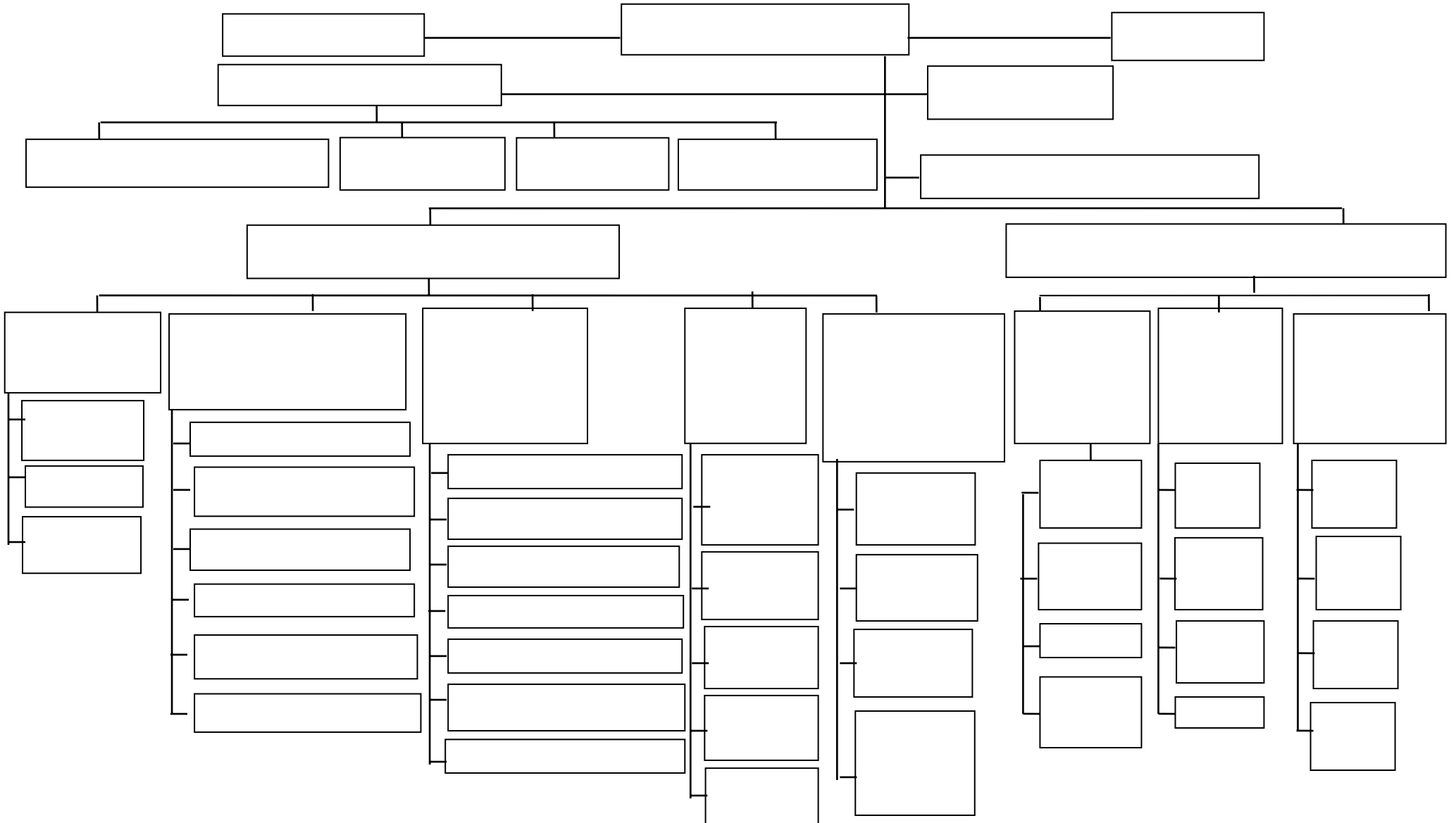


(7)

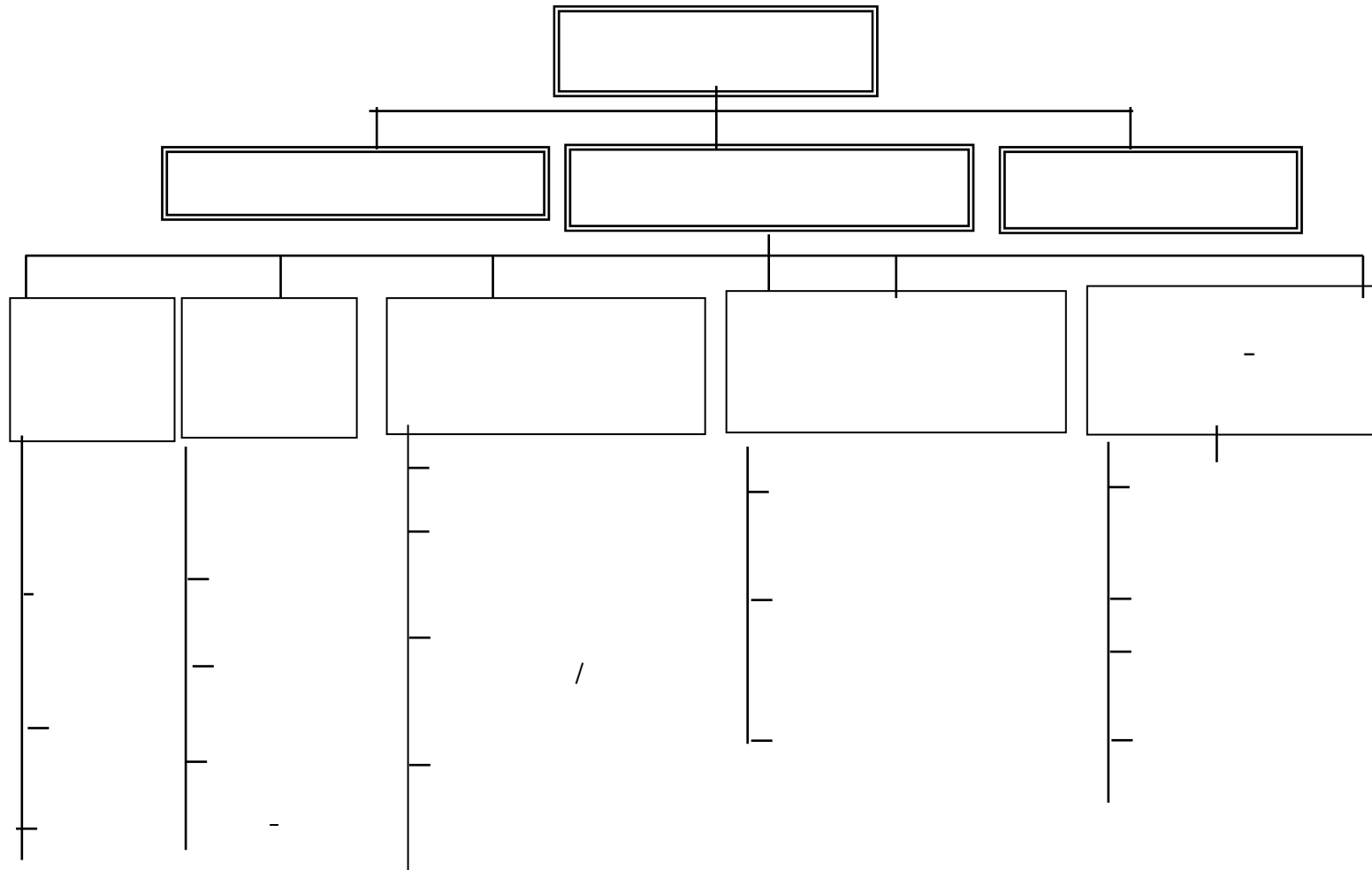
=====



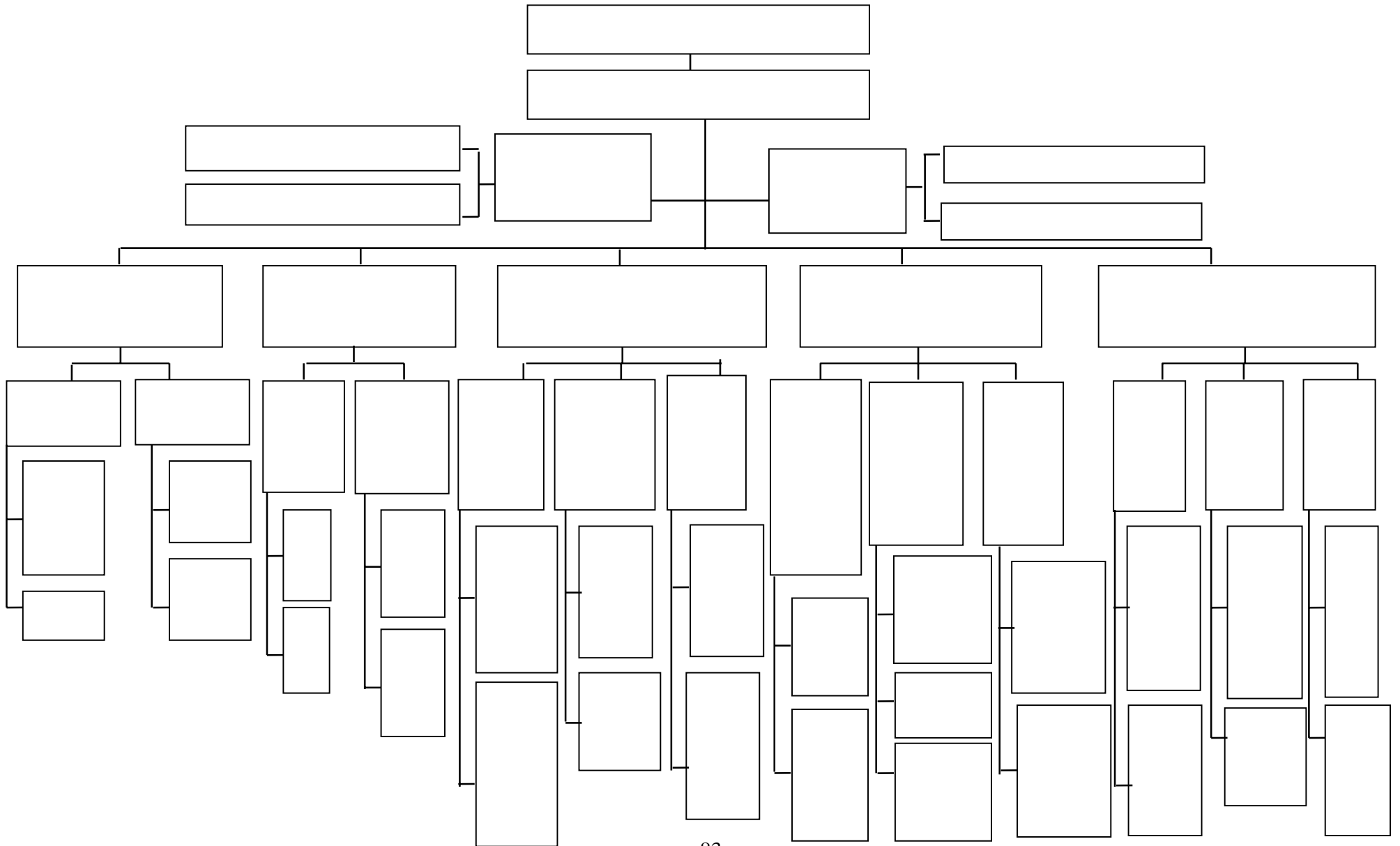
(8)



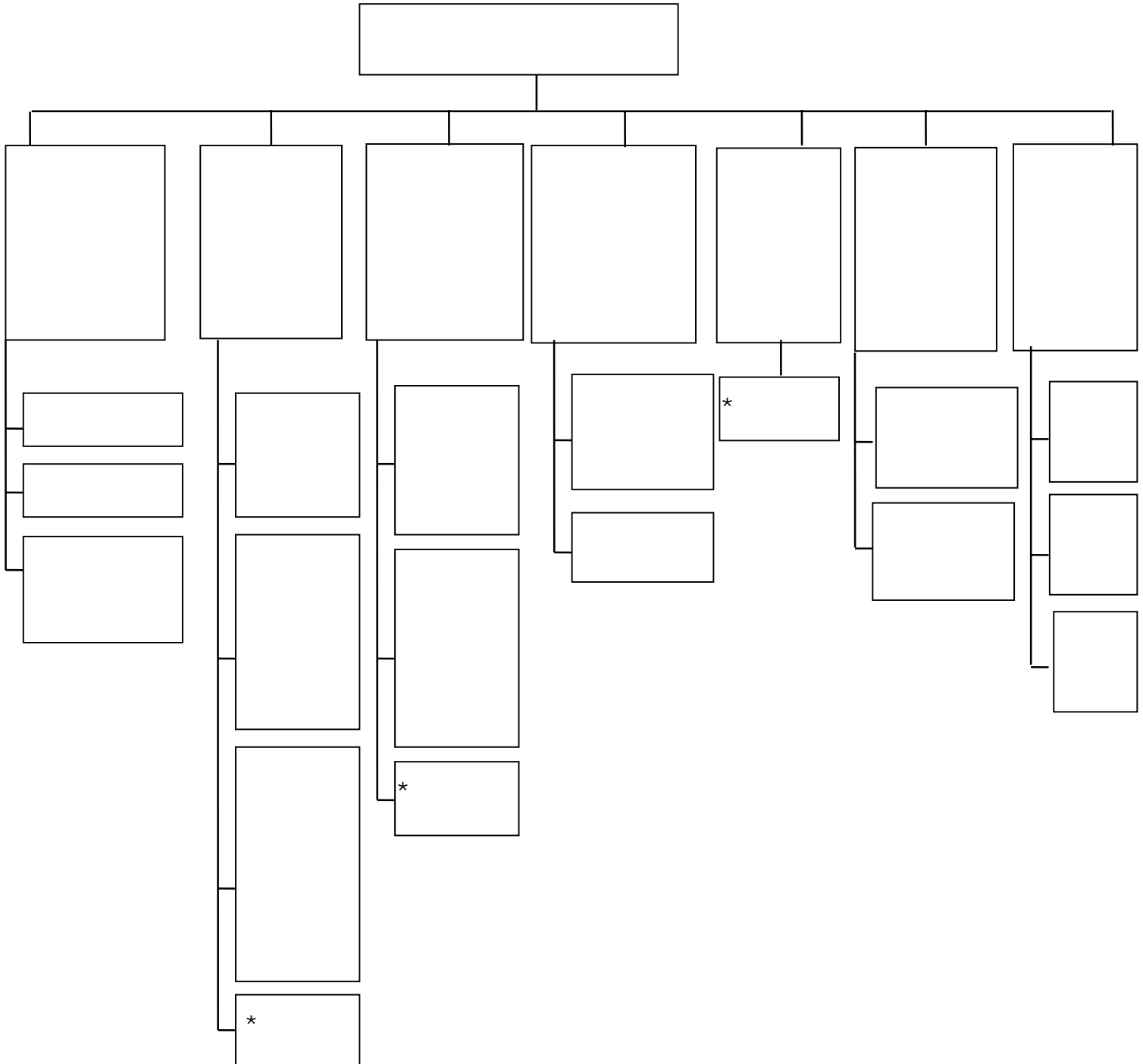
(9)



(10)

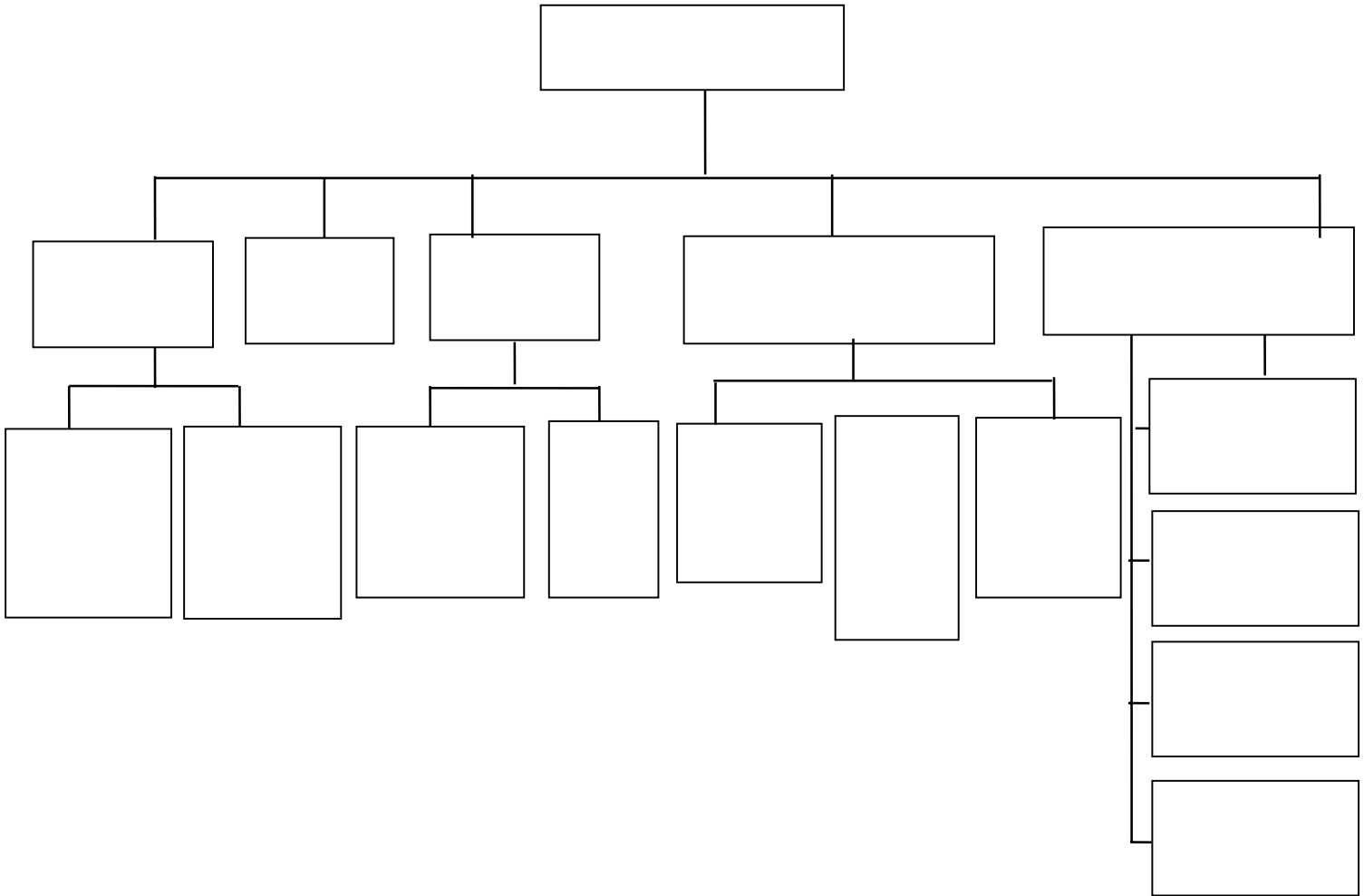


(11)

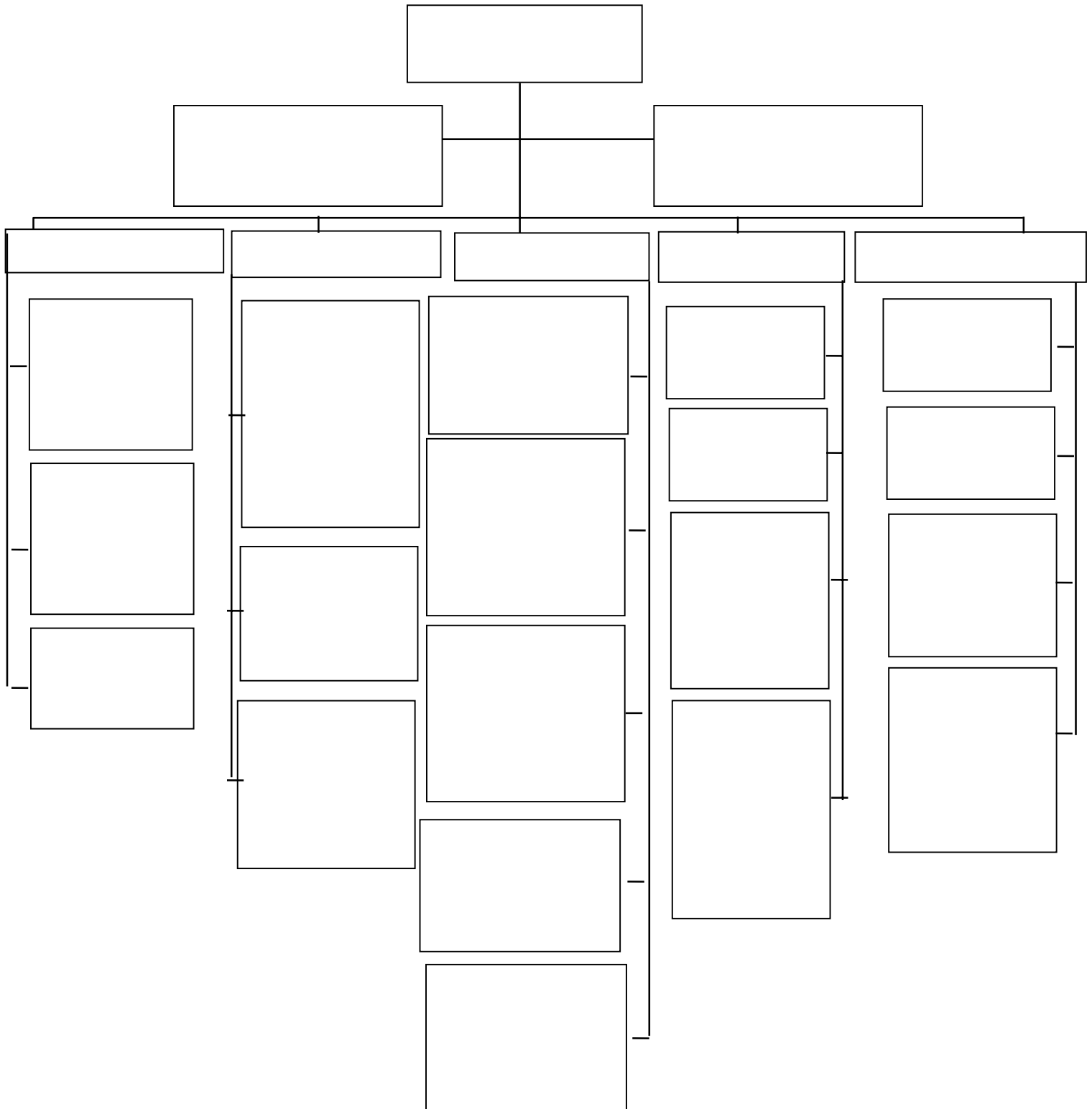


*

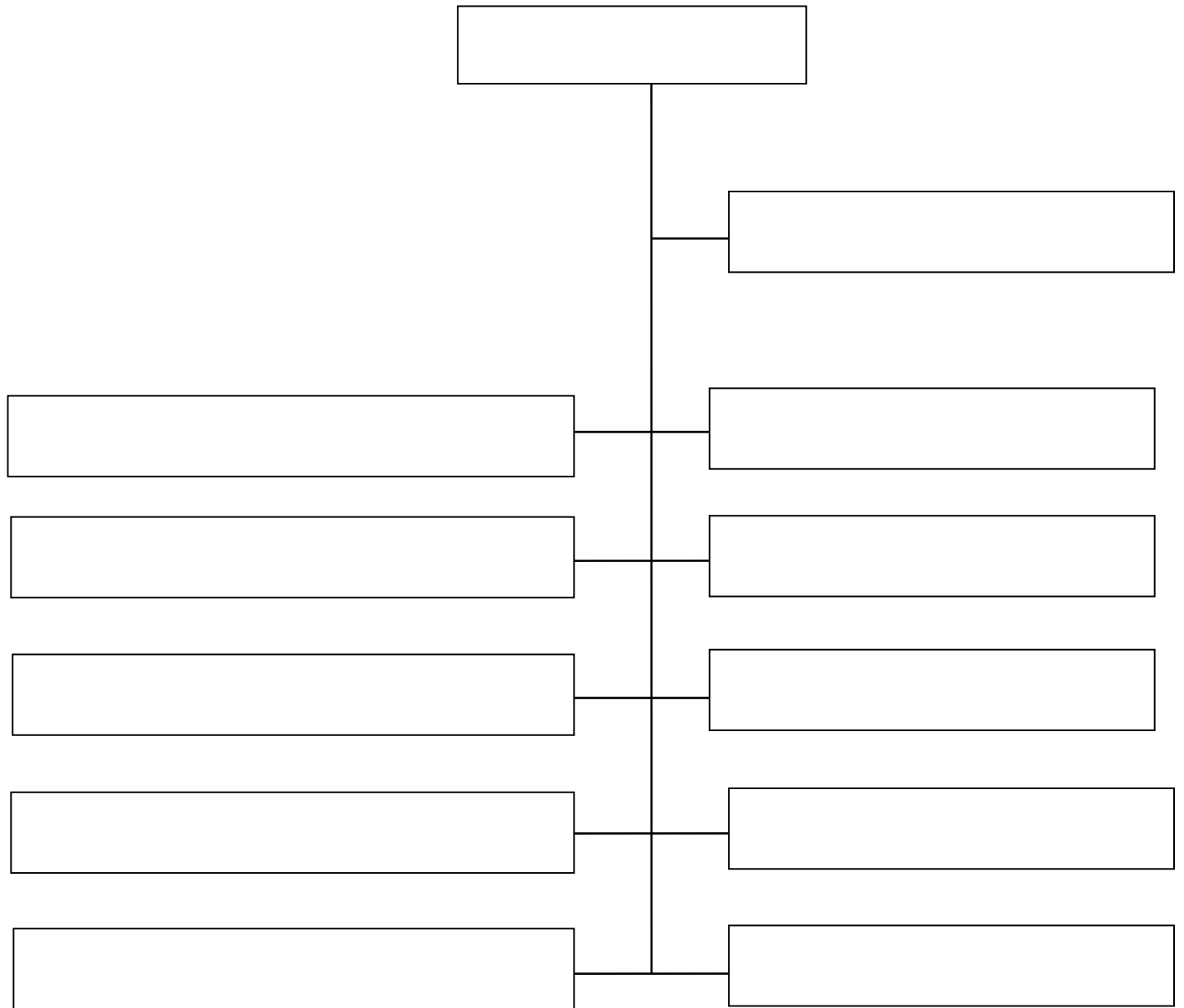
(12)



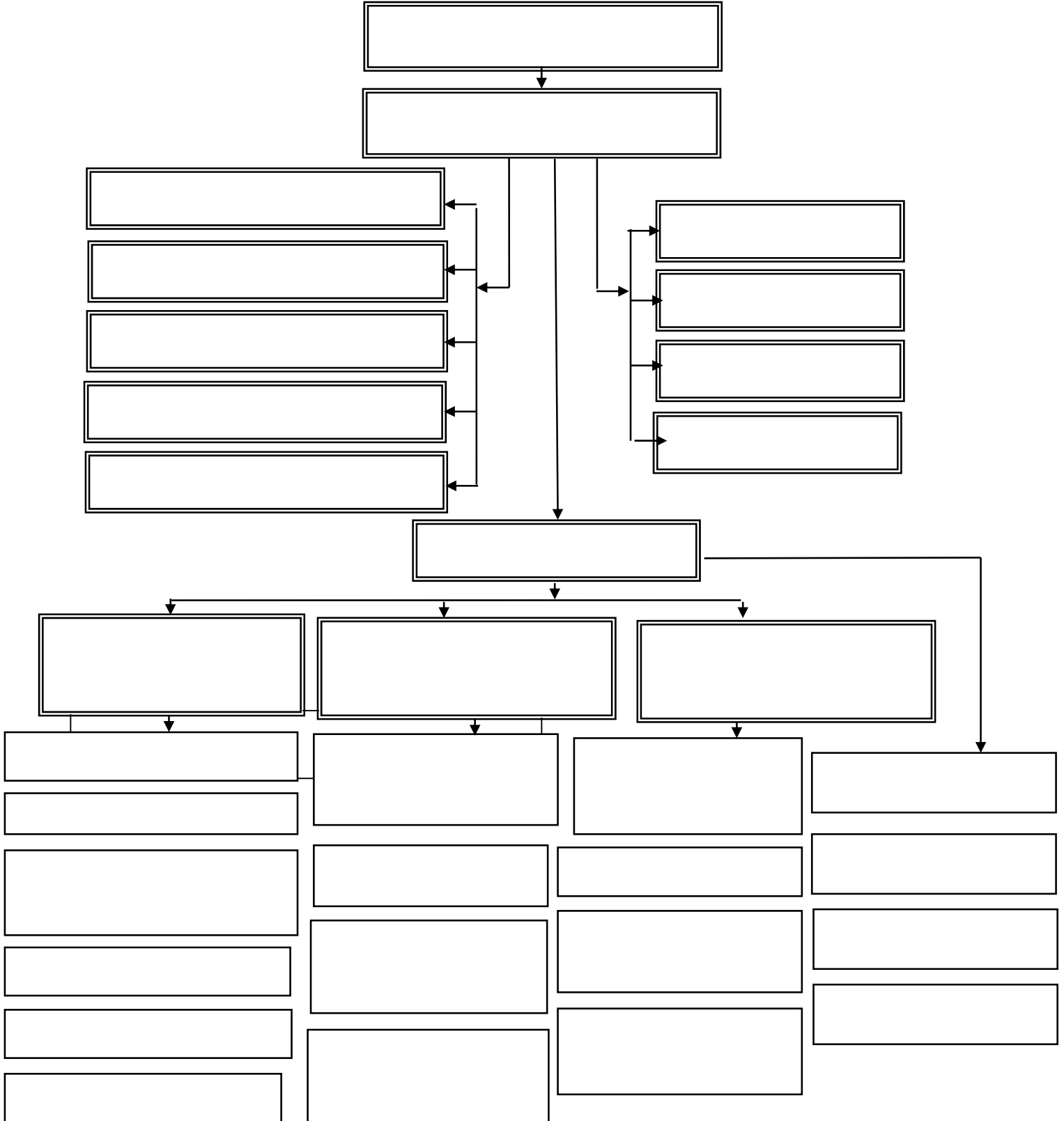
(13)



(14)

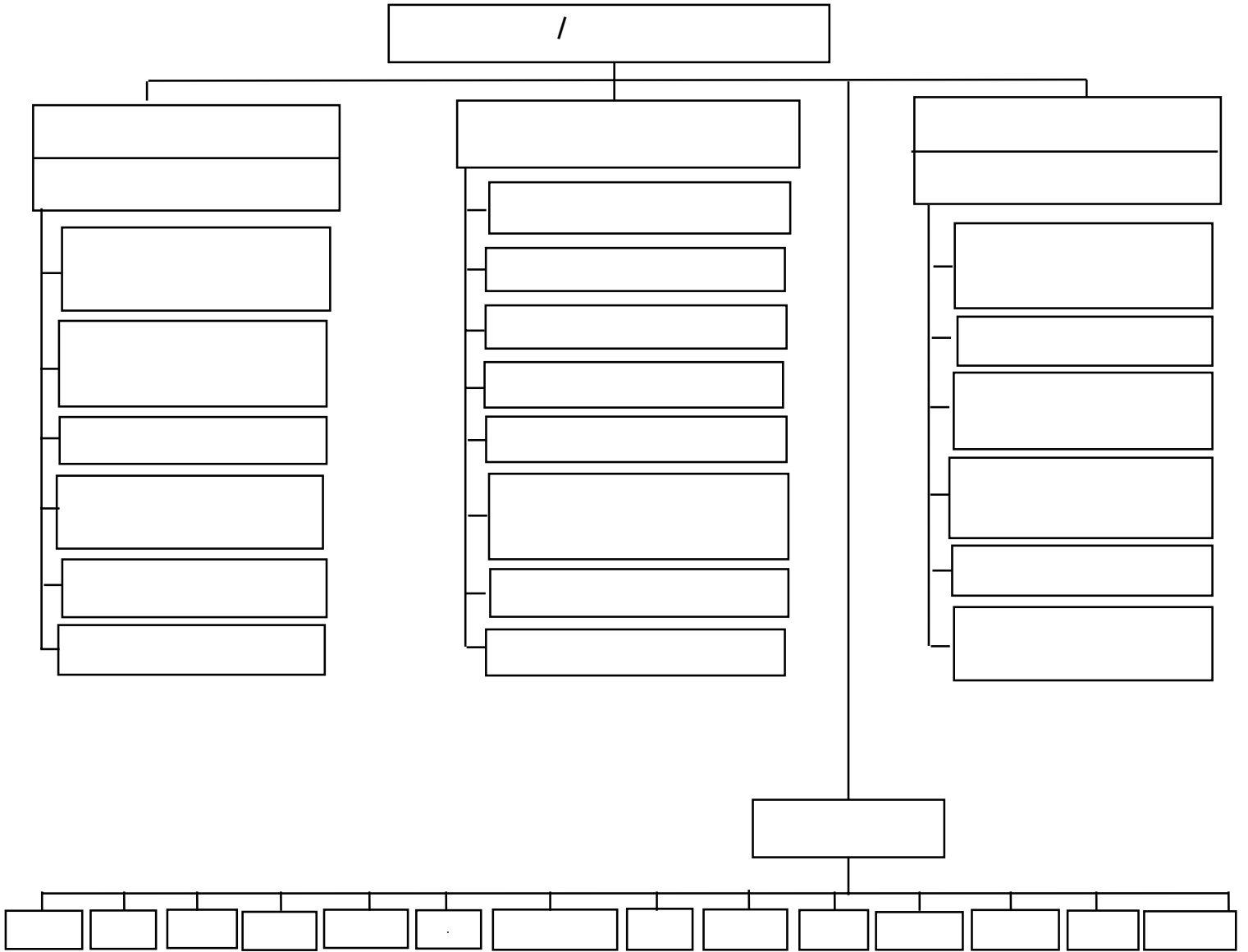


(15)

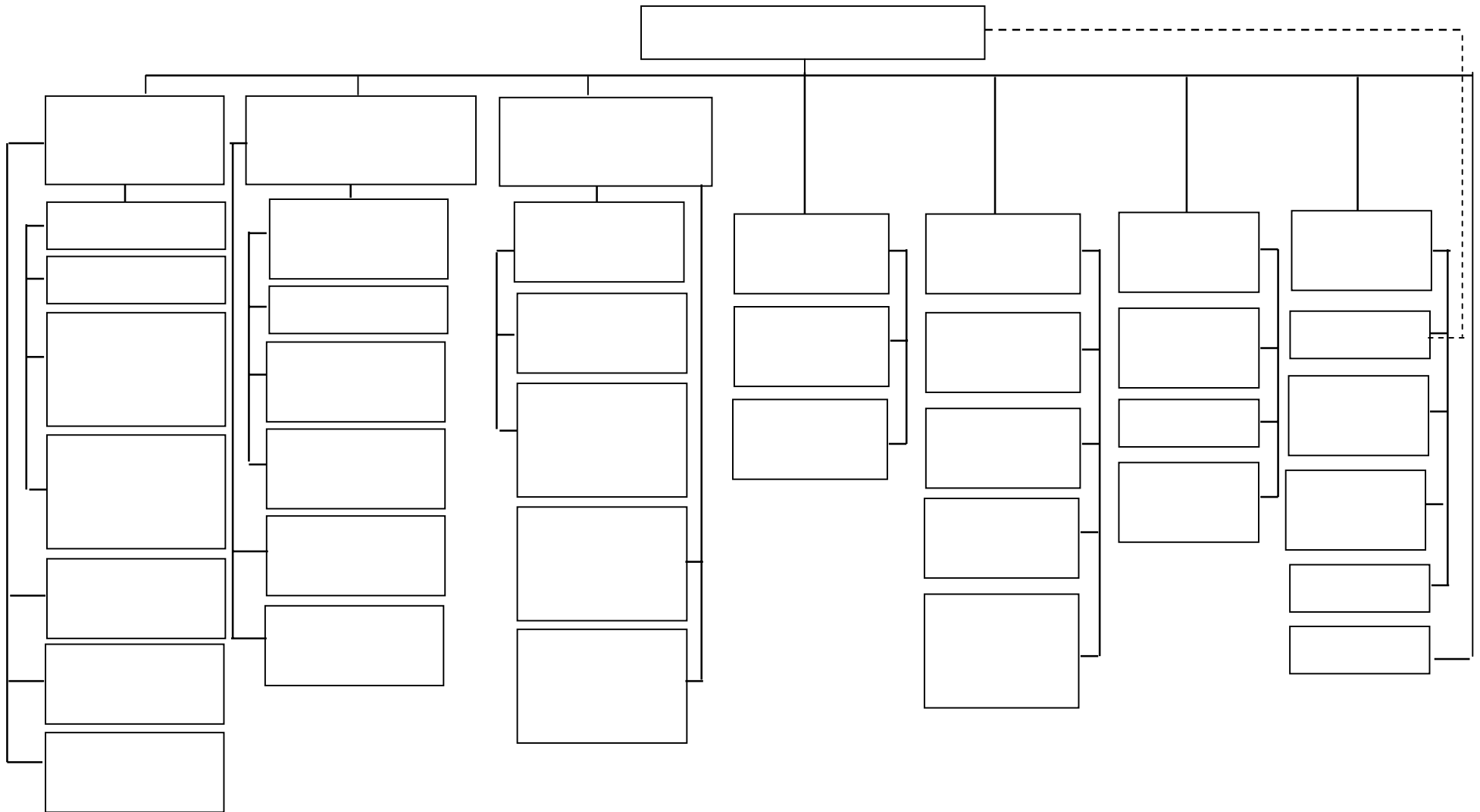


90		1
91		2
92		3
93		4
94		5
95		6

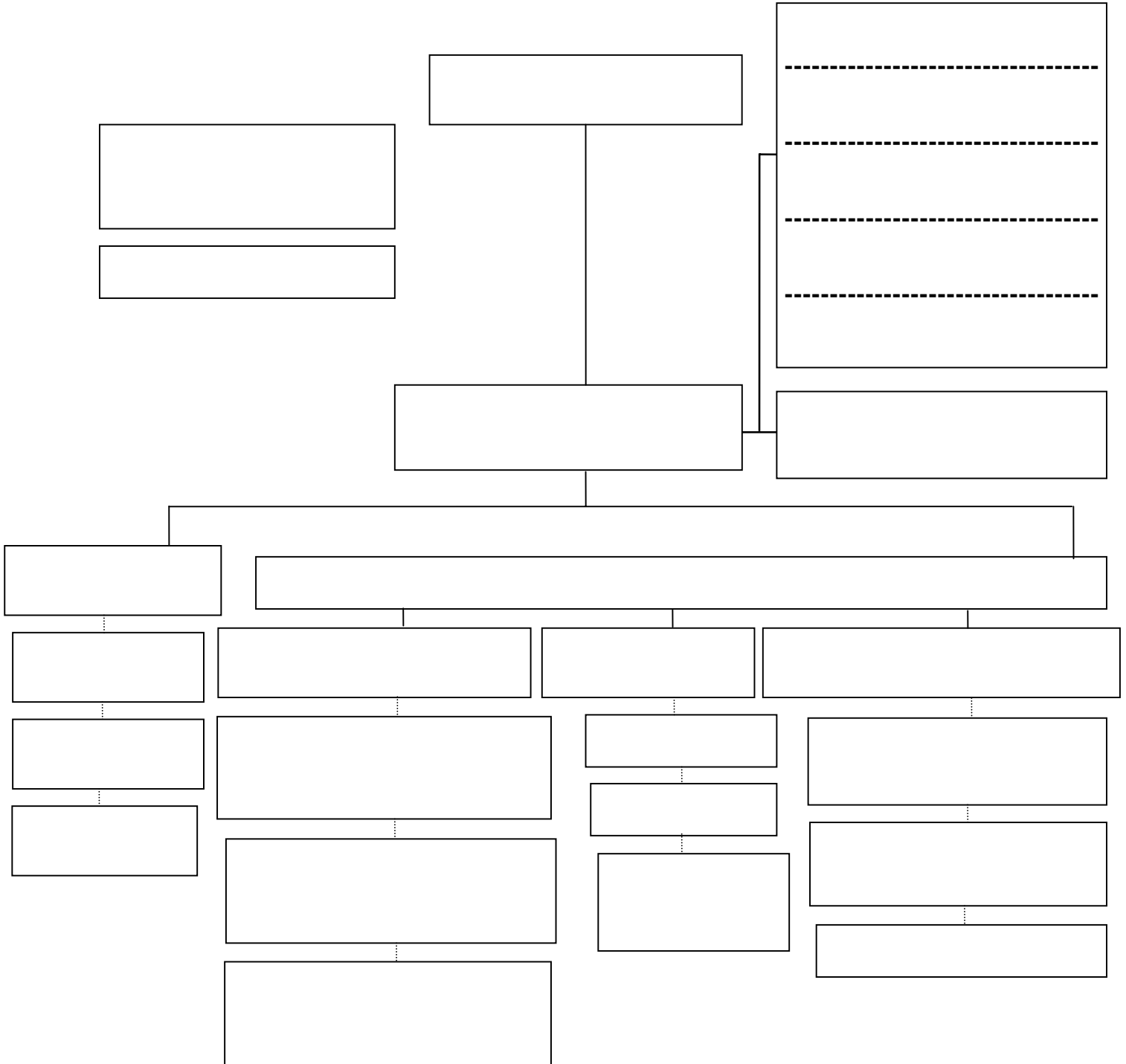
(1)



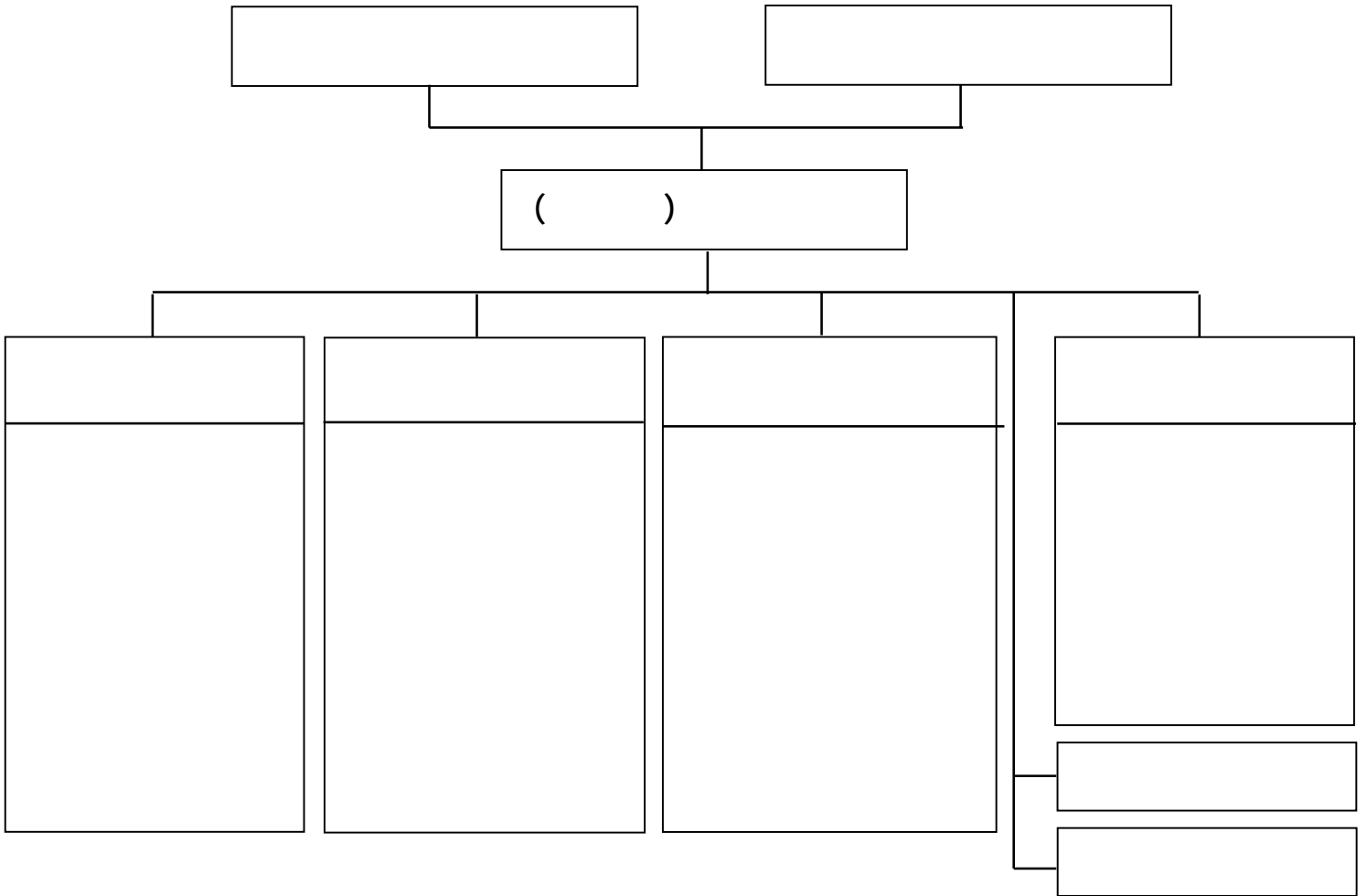
(2)



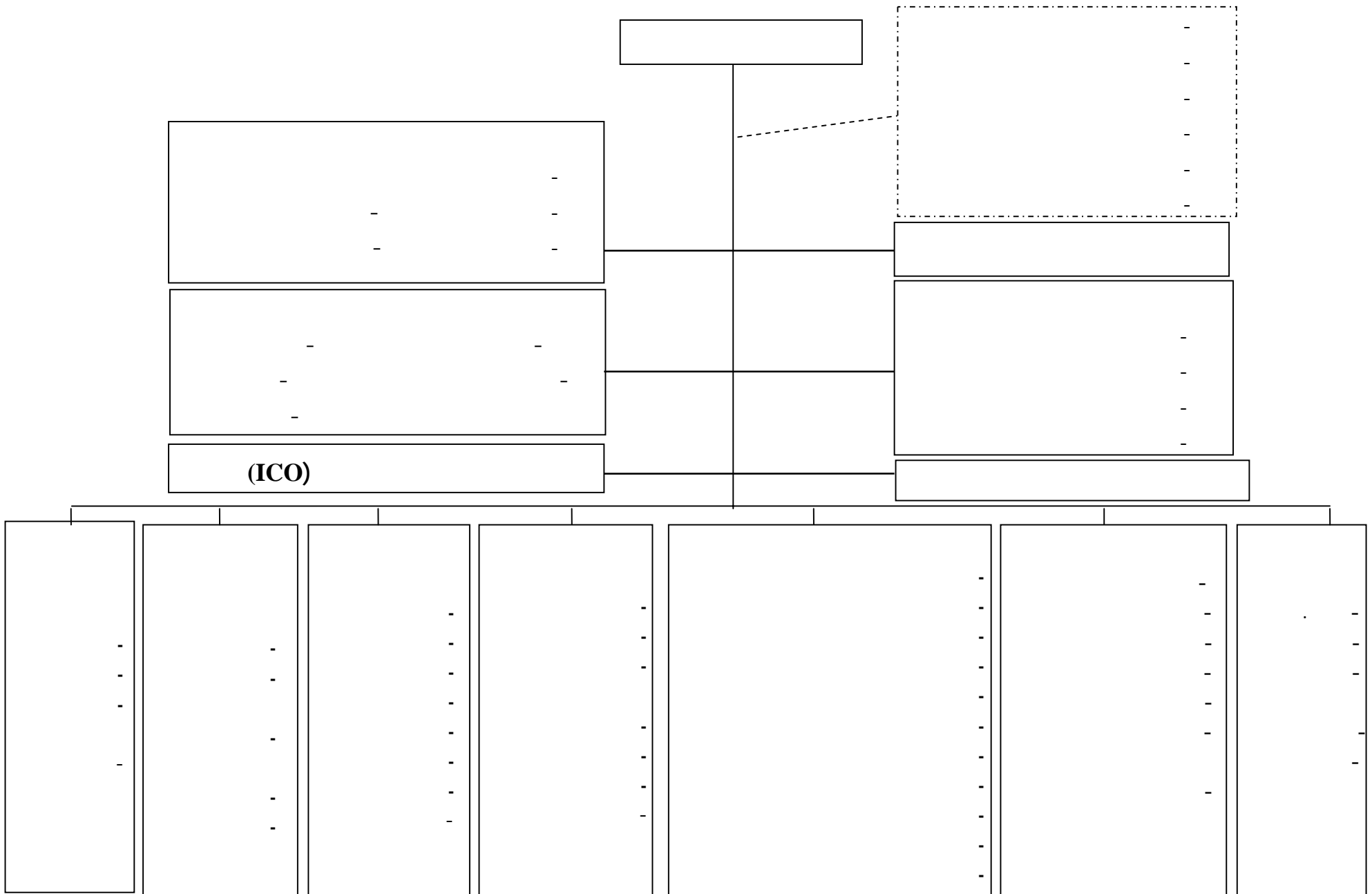
(3)

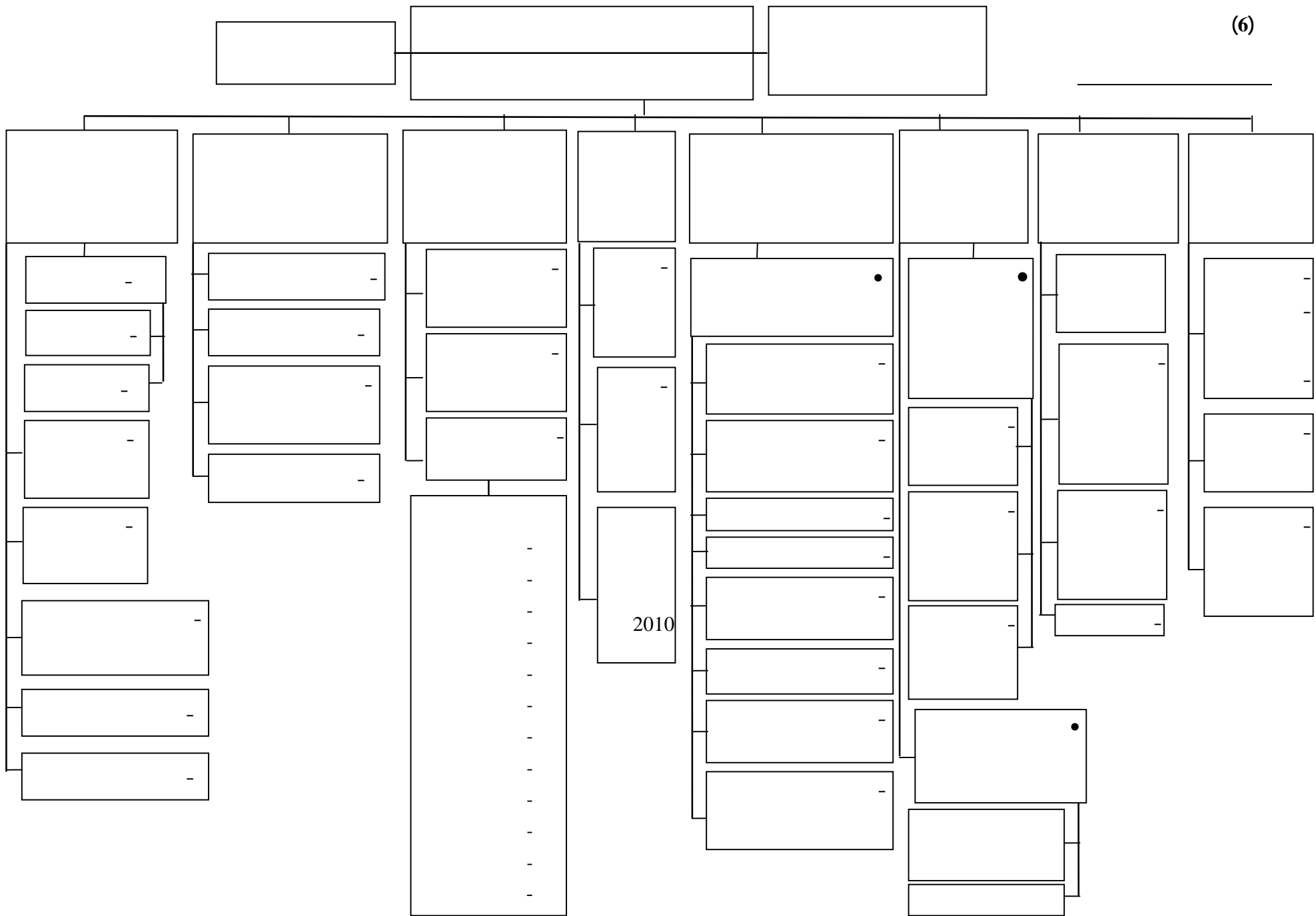


(4)



(5)





.2007	13-12	-	/	-1
				-2
				.2008
				-3
				..
.2007			()	-4
			()	-5
		.2007		
				-6
		.2004		-7
.2007			()	-8
		2006	()	-9
				-10
				:2007
.21				▪
				▪
				▪
		.2005		-11
			()	-12

- 13- The Australian Statistical System, Evaluation and Challenges.
- 14- Trewin, Dennis,(Feb.2007), The evaluation of National Statistical systems: Trends and implications.
- 15- Mohammad, Aziz, Implications for the Future, Organizational transformation of the Department of Statistics, Malaysia, 11th Meeting of the Heads of National Statistical Offices 6-8 Nov.2006, Tokyo, Japan.
- 16- Edmunds, Roger, Models of Statistical system, October, 2005, Paris 21.
Heriawan, Rusman, Statistical System in Indonesia Challenges and Prospects, 11th Meeting of the Heads of National Statistical Offices of East Asian Countries, 6-8 Nov.2006, Tokyo, Japan.
- 17- Statistics Denmark, Time for Numbers, a brochure is an introduction to statistics Denmark, May 2005.
- 18-Austin, Paul, The IMF's Data Quality Program, Arab Institute for Training and research in Statistics Data Quality workshop, Amman, Jordan, Oct.2007
- 19-Council for official statistics of Sweden, Annual Report 2006.
- 20- U.S. Census Bureau, Censes Product catalog, Facts about the Census.
- 21- U.S. Title 13- Census, law 104, 1995.
- 22- Education Counts, Benchmarking Progress in 19 WEI Countries, World Education Indicators-2007, UNESCO Institute for Statistics, 2007.