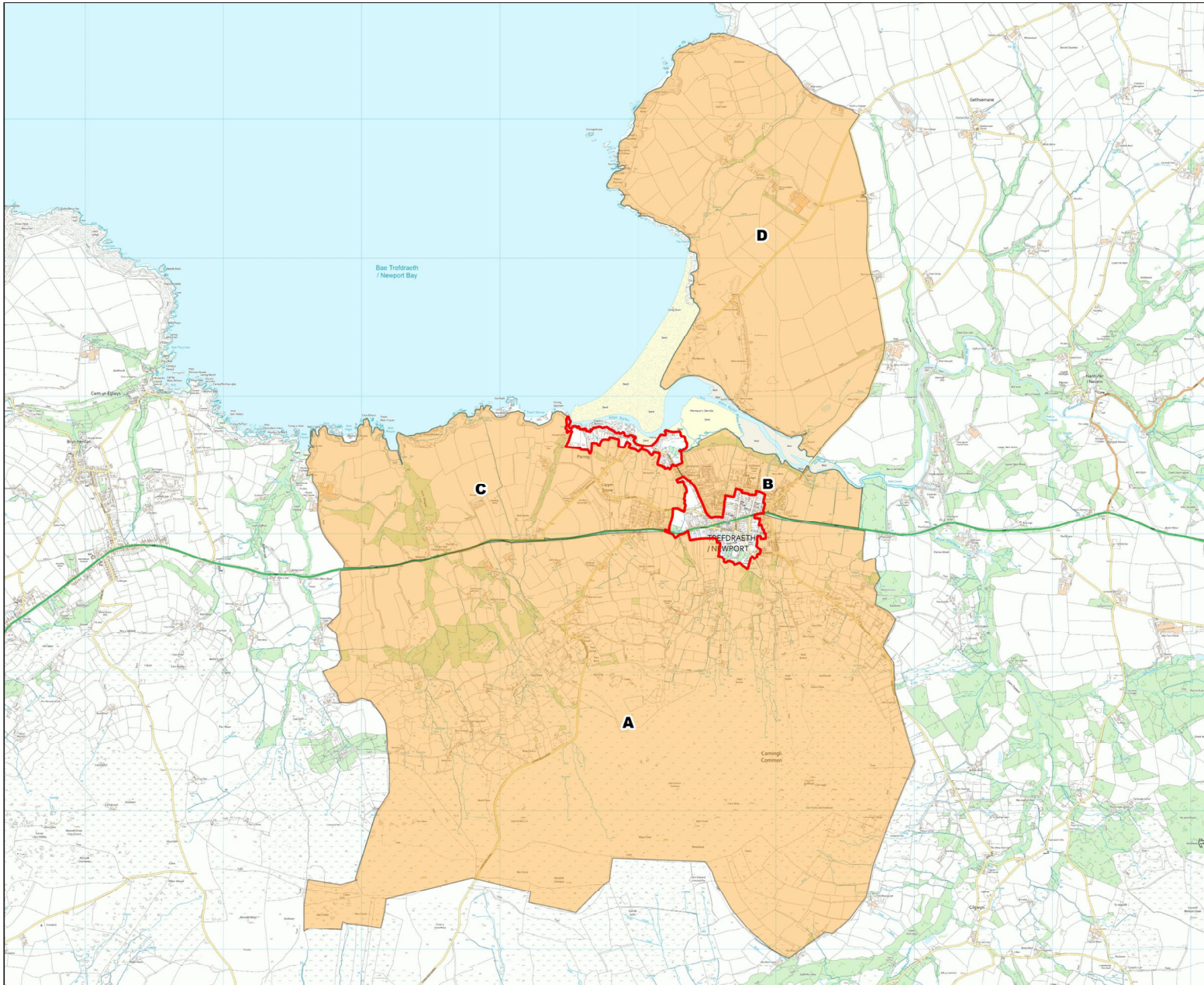


# Newport and Newport Parrog

Outlying areas important to the setting and character of the Conservation Area



## Newport and Newport Parrog Conservation Area Designated 1999 MAP 6

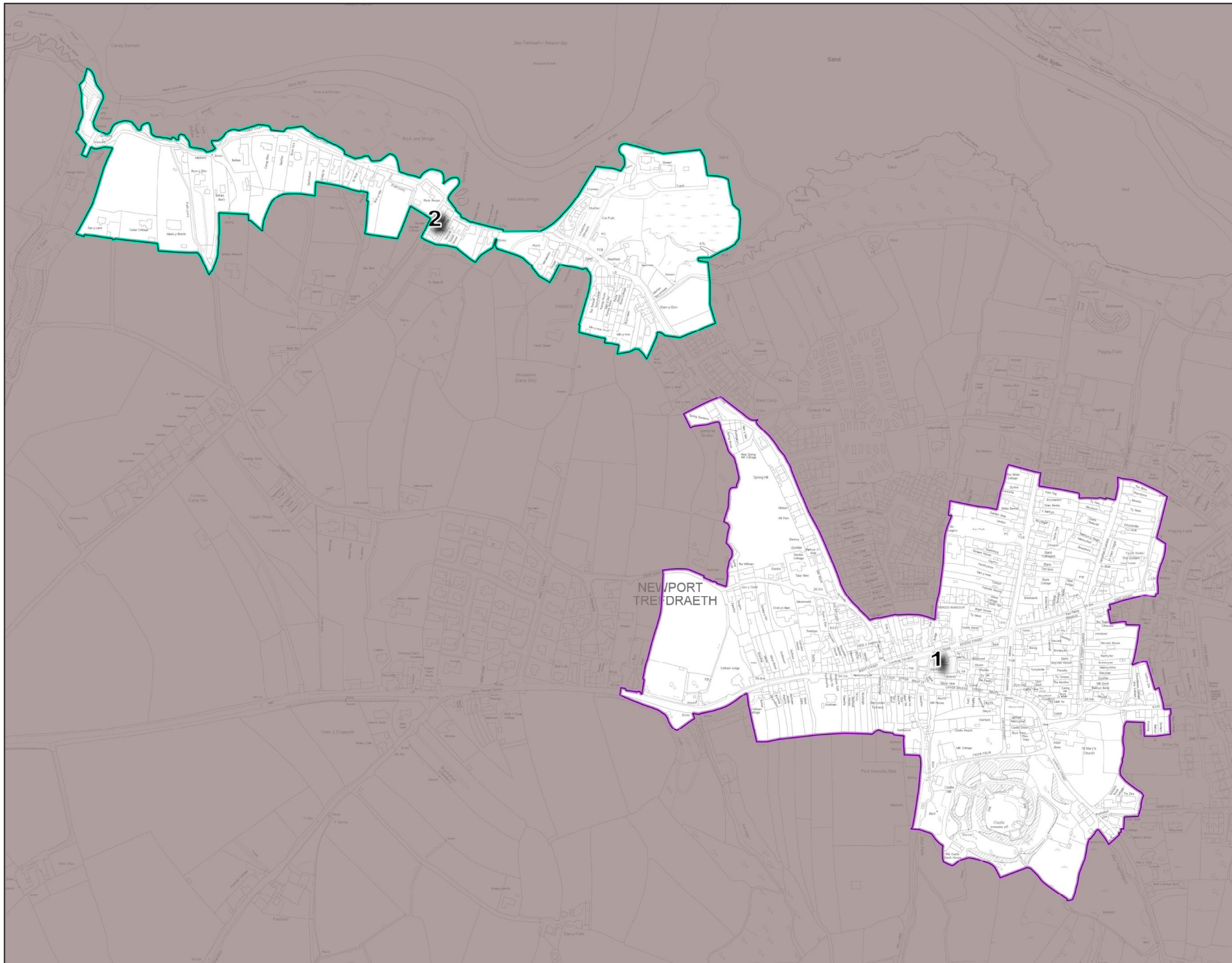
- A. Carn Ingli and northern slopes of immense archaeological, historic, landscape and architectural importance including prehistoric hut circles, enclosures, earthworks, settlements, drystone walled enclosures. Overlying this are early field systems surviving from early cultivation of open moor and smallholdings dating from early C19 encroachment including characteristic cottages & outbuildings.
- B. Area immediately north-east of Newport Conservation Area of high archaeological importance (Coetan Arthur Burial Chamber & Old Castle Site)
- C. Area immediately north-west of Conservation Areas including Cerrig y gof burial chamber and standing stones of high archaeological importance.
- D. Morfa Head and north side of Nevern Estuary

**Newport**  
**Conservation Area**  
**Designated 1999**  
**Article 4 Directions**  
**MAP 3**

**NEWPORT / TREFDRAETH**



**Newport**  
Conservation Area  
Designated 1999  
Character Areas  
MAP 4



# Newport Conservation Area Designated 1999 MAP 1

## Key

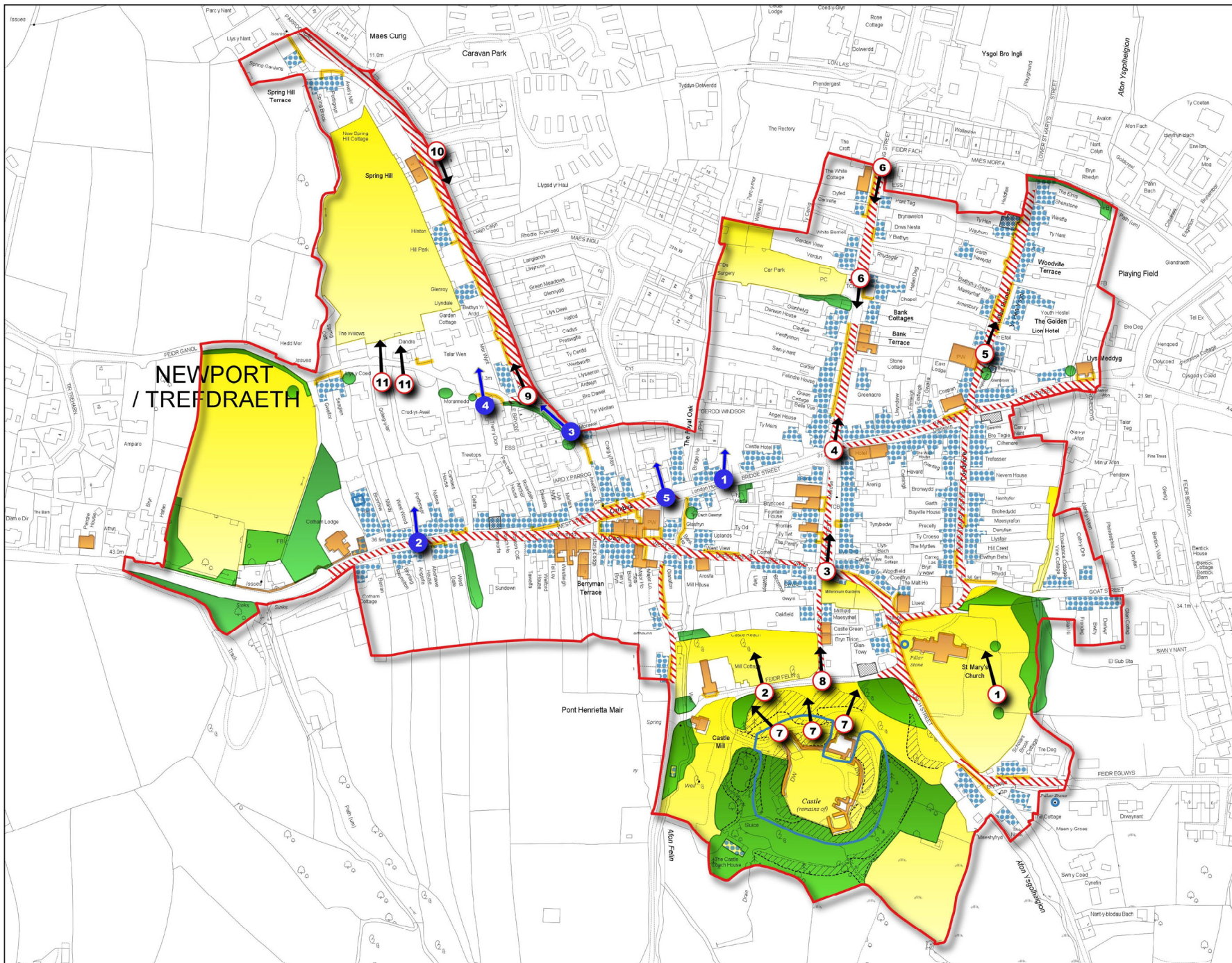
- Conservation Area / Character Areas
- Listed Buildings
- Tree Preservation Order/ Trees important to setting
- Scheduled Ancient Monuments
- Site of Special Scientific Interest
- Special Area of Conservation
- Landmark Buildings
- Positive Buildings
- Key curtilages/frontages
- Essential Open Areas
- Opportunity for improvement of forecourt/curtilage/shop fronts
- Opportunity for enhancement of area
- Opportunity for public realm/features enhancement

## Key views

1. View of townscape from cemetery; distant views of estuary
2. Views over rooftops towards estuary from Feidr Felin
3. Views fronted by street of distant landscape
4. Views down Long Street with distant rural views
5. Views down lower St Marys Street terminated by trees
6. Views up Long Street towards castle
7. Panoramic views over townscape and Parrog from castle
8. View from head of Castle Street fronted by cottages towards distant landscape
9. Fine views of Parrog and coast from Parrog Road
10. View of castle, trees and Carn Ingli from Spring Hill
11. Coastal views from Feidr-ganol across fields

## Glances to an object/landmark/point of interest

1. Glimpse of sea from Castle Hotel
2. Sea glimpse from West Street
3. Sea glimpse from Craig y nos
4. Sea glimpse from Feidr Ganol
5. Glimpse to distant fields



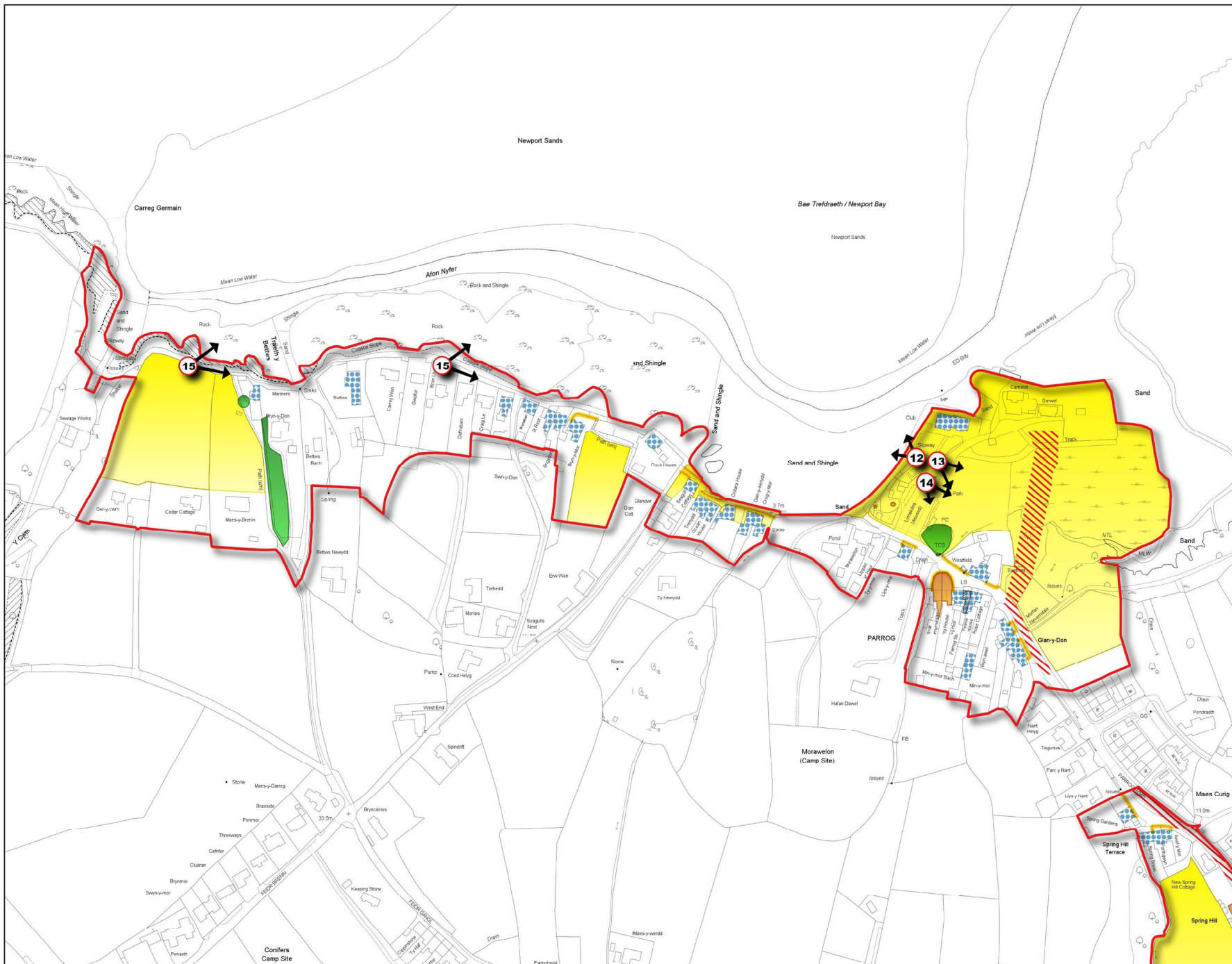
# Newport Parrog Conservation Area Designated 1999

## MAP 2

### Key

- Conservation Area / Character Areas
- Listed Buildings
- Tree Preservation Order/ Trees important to setting
- Scheduled Ancient Monuments
- Site of Special Scientific Interest
- Special Area of Conservation
- Landmark Buildings
- Positive Buildings
- Key curtilages/frontages
- Essential Open Areas
- Opportunity for improvement of forecourt/curtilage/shop fronts
- Opportunity for enhancement of area
- Opportunity for public realm/features enhancement
- ➔ Key views

12. Fine panoramic sea views from Parrog
13. Views towards the Nevern Valley and distant fields
14. Fine views of townscape set against Carn Ingli from Parrog
15. Views from coast path across estuary and up Nevern Valley across the Parrog
16. View from Car Park towards castle



# Newport

## Prominent views into Conservation Area



Parc Cenedlaethol  
Arfordir Penfro  
Pembrokeshire Coast  
National Park



### Newport Conservation Area Designated 1999 MAP 5

1. Western approach to Newport Conservation Area (A487), the boundary marked by a substantial group of trees at Cotham Lodge with the built-up streetscape of West Street beyond.
2. Eastern approach to Newport Conservation Area (A487), the townscape dominated by Ebeneser Chapel with Llys Meddyg marking the entry into the Conservation Area.
3. Southern approach (Cilgwyn Road & King St) with panoramic views including, the church tower rising above the trees, the Parrog, along with the Nevern estuary beyond.
4. Northern approach from the Moylegrove road showing a fine vista of the town pivoting on the castle and church, set against the backdrop of Carn Ingli.
5. Northern approach from the Moylegrove road showing a fine vista of the town pivoting on the castle and church, set against the backdrop of Carn Ingli.
6. Fine views of Conservation Areas from Newport Golf Club across Nevern Estuary showing the town and Parrog set against the slopes of Carn Ingli.
7. Views of Parrog Conservation Area from Parrog Road, showing rooftops with the sea beyond.
8. Views over Conservation Area from Carn Ingli showing town clustered among trees, the church tower, Parrog and headlands beyond.
9. View from old castle.
10. View from estuary path.
11. View from sea and estuary.
12. View from east side of estuary.