

# Portfield Excavations – Summer 2022

Sam Walsh & Rick Peterson



# Portfield Camp

Iron Age Hillfort just outside Whalley

Neolithic occupation

Middle Bronze Age hoard

Badly damaged in the mid 20<sup>th</sup> century

2015 geophysics as part of the Pendle Hill Landscape Partnership Community Archaeology programme



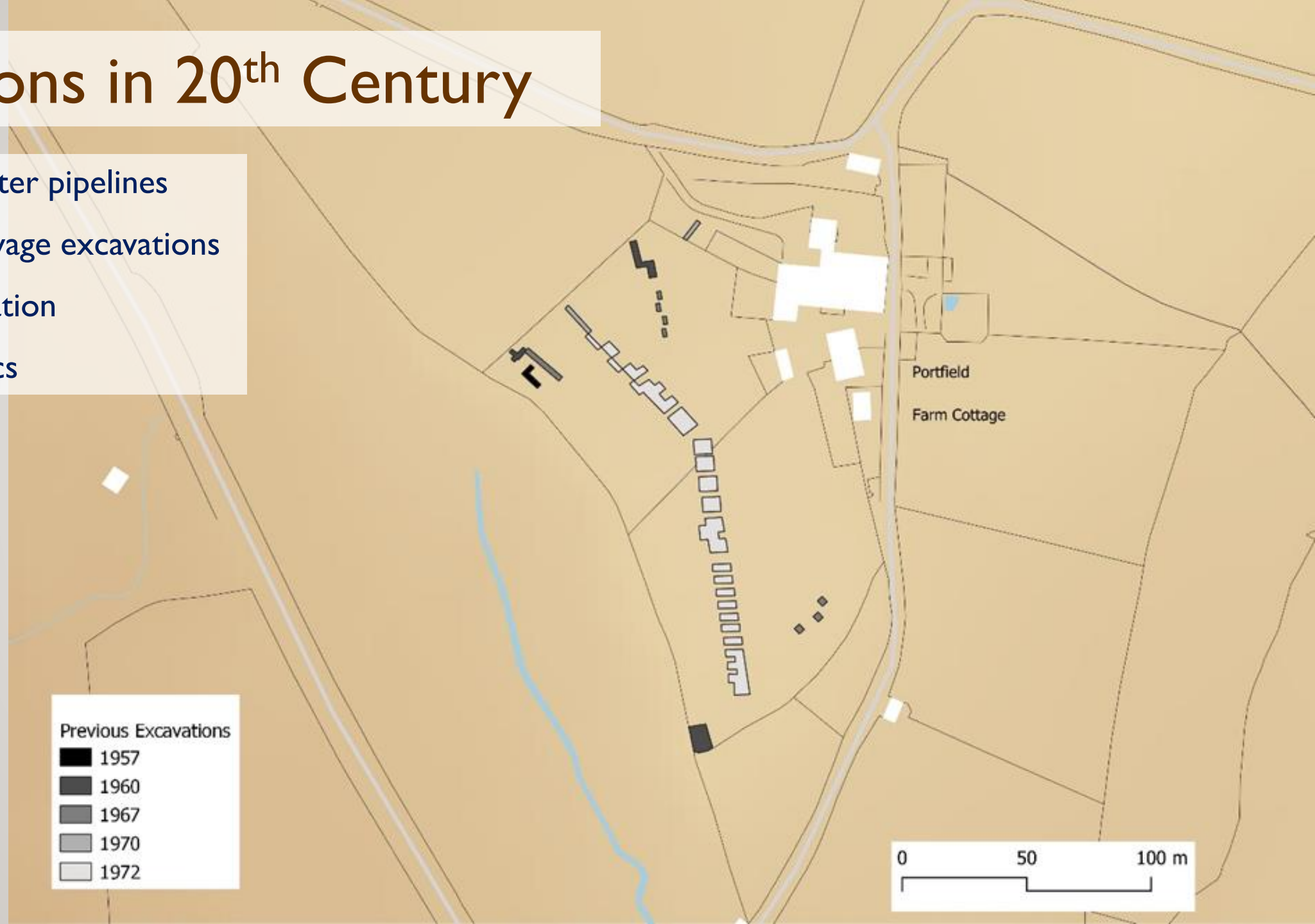
# Excavations in 20<sup>th</sup> Century

Threats from water pipelines

Local society salvage excavations

Neolithic occupation

Pottery and lithics



Previous Excavations

- 1957
- 1960
- 1967
- 1970
- 1972

0 50 100 m

# Portfield Hoard

Discovered in water pipeline trench

Now in the British Museum

Middle Bronze Age

Gold lock-ring and bracelet

Socketed axe, chisel, bit of sword

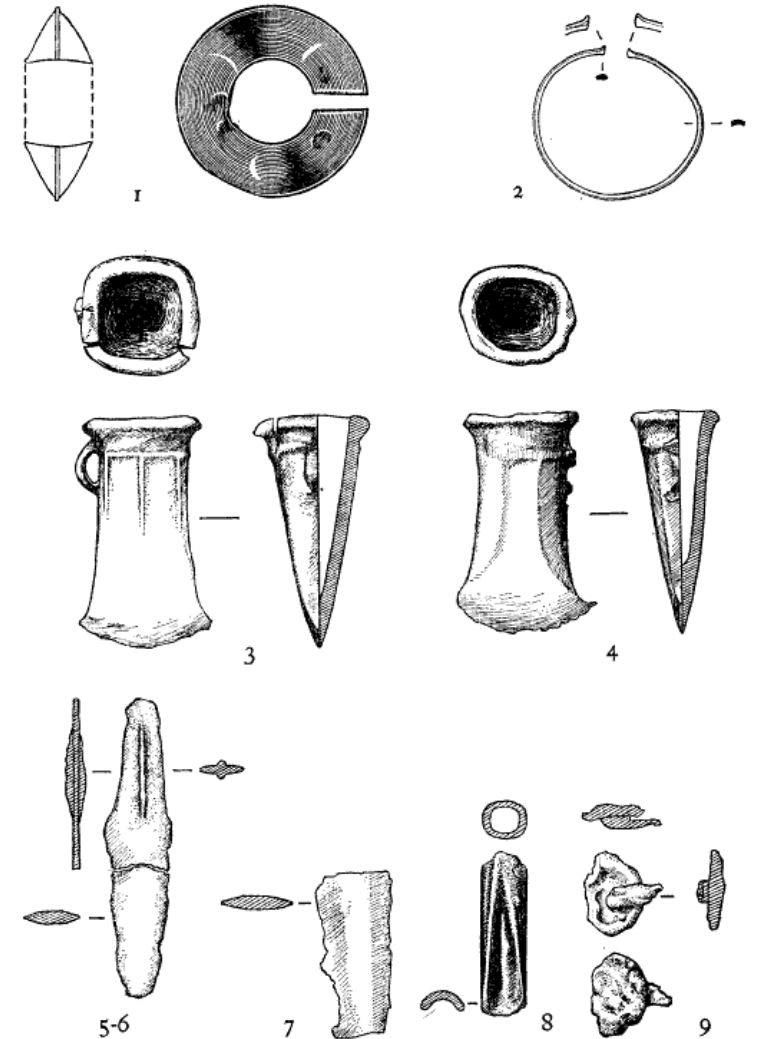


FIG. 2. The Portfield Hoard: 1-2 gold; 3-9 bronze (drawn by Mr. P. C. Compton). All half actual size except no. 1 which is actual size.



# Geophysical Survey

Community project

2015 – led by Mike Woods

Lots of pipeline disturbance

Probable ring ditch

Early Bronze Age  
ritual/funerary monument





# Aims and Objectives

Aim: Evaluate the geophysical anomaly

- 1 Expose archaeological features
- 2 Identify & Record
- 3 10% sample of all features
- 4 Bulk samples for CPR (floatation)

Three weeks fieldwork

One week to complete analysis to assessment level

'Strip, map and sample' methodology



Evaluation 01

A map of a site with a tan background. It shows several white rectangular areas representing buildings or structures. A dashed rectangular box labeled 'Evaluation 01' is located in the middle-left area. The map also shows various lines representing boundaries or features.

Portfield

Farm Cottage



# Community Events





# Results





# Ditch





Ditch





# Circular Pit – Lime Kiln





# Circular Pit – Lime Kiln





# Circular Pit – Lime Kiln

PFC 22  
(024)  
Modern  
Pottery



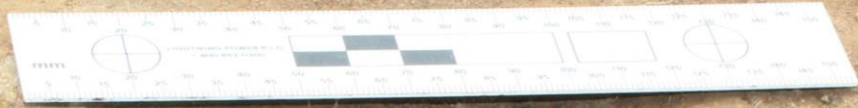


# Postholes





# Postholes





# Artefacts

2 (018)

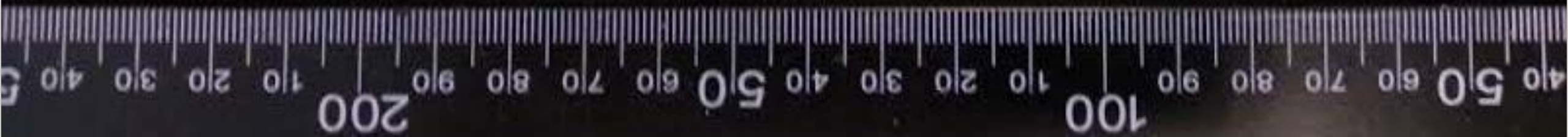
ery





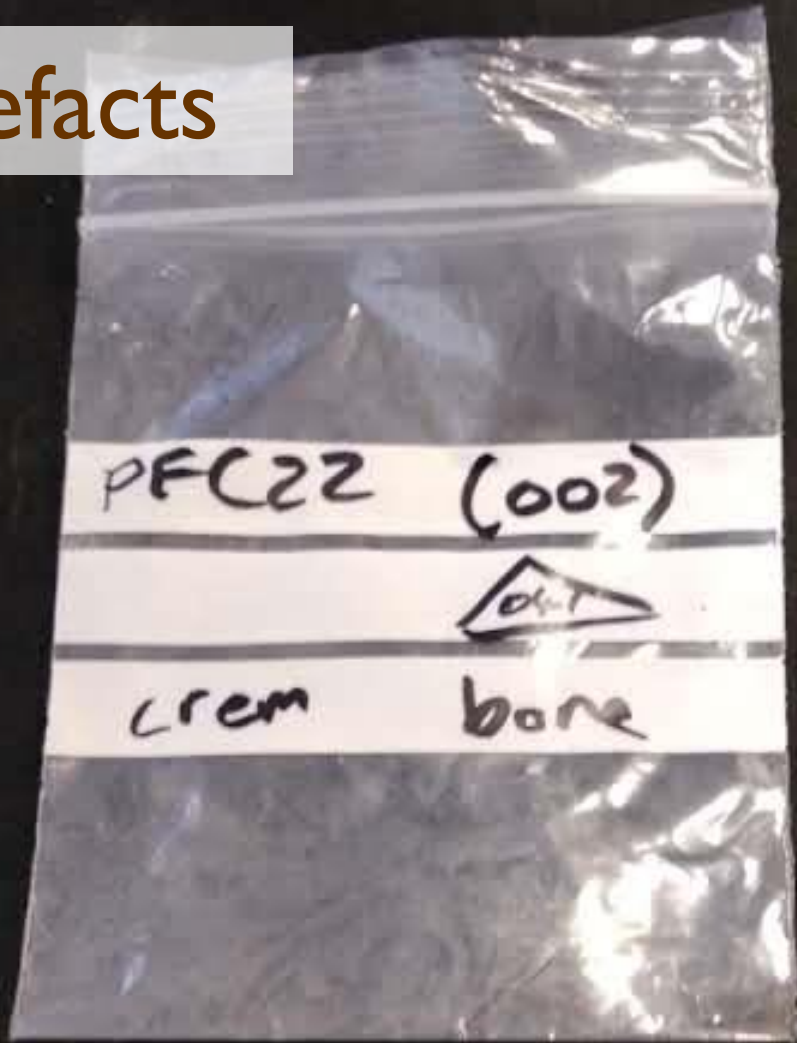
# Artefacts

2002) Purll  
Debitage





# Artefacts





# Artefacts





# Portfield Camp

Post Medieval lime burning/ditch

Prehistoric Postholes

Possibly Bronze Age bone and lithics

Possible Bronze Age whetstone

Probable Iron Age VCP pottery





# Acknowledgements

An aerial photograph of a rural landscape. In the center, a cluster of several houses with dark roofs is situated on a slight rise. To the left, a dense forest of trees with varying shades of green and brown occupies the lower-left quadrant. To the right, a large, open green field stretches towards the top right, with a small blue rectangular object on the ground. A road or path curves around the houses and fields. The overall scene is bright and clear, suggesting a sunny day.

Peter and Dorina Jackson

Andrew Davison (Historic England)

Mike Woods (MMU)

Jess Wight and Cathy Hopley (PHLP)