



Pherobank catalogue

The world's largest collection of top quality pheromones!

Catalogue

Available pheromone lures

Article	Latin name	English name	lure type ¹	recommended trap type ²	remarks ³
50445	<i>Acleris comariana</i>	Strawberry tortrix	nr	dtw, ft, wt	
50001	<i>Acleris rhombana</i>	Fruitree tortrix	nr	dtw, ft, wt	
50319	<i>Acrobasis vaccinii</i>	Cranberry fruitworm	nr	dtw, ft, wt	
50002	<i>Acrolepiopsis assectella</i>	Leek moth	nr	dtw, ft, wt	MT possible
50403	<i>Actebia fennica</i>	Black army cutworm	nr	dtw, ft, wt	
50003	<i>Adoxophyes orana</i>	Summerfruit tortrix	nr	dtw, ft, wt	
50337	<i>Agrius species</i>	jewel beetles, i.a. Emerald Ash Borer	sx	ppt	Experimental
50241	<i>Agriotes gallicus</i>	Click beetle (wireworm)	pv	ft (gr/gr/tr)	
50004	<i>Agriotes lineatus</i>	Lined click beetle (wireworm)	pv	ft (gr/gr/tr)	MT possible
50005	<i>Agriotes obscurus</i>	Click beetle (wireworm)	pv	ft (gr/gr/tr)	MT possible
50447	<i>Agriotes rufipalpis</i>	Click beetle (wireworm)	pv	ft (gr/gr/tr)	MT possible
50012	<i>Agriotes sordidus</i>	Click beetle (wireworm)	pv	ft (gr/gr/tr)	MT possible
50240	<i>Agriotes species combilure</i>	Click beetle (wireworm)	pv	ft (gr/gr/tr)	attractive to <i>Agriotes</i> spp. 4
50006	<i>Agriotes sputator</i>	Common click beetle (wireworm)	pv	ft (gr/gr/tr)	MT possible
50013	<i>Agriotes ustulatus</i>	Click beetle (wireworm)	pv	ft (gr/gr/tr)	MT possible
50451	<i>Agrius convolvuli</i>	Convolvulus hawk moth	nr	dtw, ft, wt	
50007	<i>Agrotis andina</i>	Quinoa cutworm	nr	dtw, ft, wt	
50008	<i>Agrotis exclamationis</i>	Heart and dart moth	nr	dtw, ft, wt	MT possible
50009	<i>Agrotis ipsilon</i>	Black cutworm	nr	dtw, ft, wt	
50010	<i>Agrotis orthogonia</i>	Pale western cutworm	nr	dtw, ft, wt	
50011	<i>Agrotis segetum</i>	Turnip moth	nr	dtw, ft, wt	
50014	<i>Anarsia lineatella</i>	Peach twig borer	nr	dtw, ht	
50377	<i>Anatrachyntis simplex</i>	False pink bollworm	nr	dtw, ft	
50242	<i>Anomala dubia</i>	Dune chafer	ol	ft (gr/gr/tr)	
50322	<i>Anomala rufocuprea</i>	Soybean beetle	nr	ftbc (gr/tr/tr/tr)	
50305	<i>Anthonomus grandis</i>	Cotton Boll Weevil	nr	special	Please inquire
50362	<i>Anthrenus verbasci</i>	Varied carpet beetle	nr	special	Please inquire
50015	<i>Aonidiella aurantii</i>	California red scale	nr	dtw	
50261	<i>Apamea oblonga</i>	Crescent Striped	nr	dtw, ft, wt	
50016	<i>Apomyelois ceratoniae</i>	Carob moth	nr	dtw, ft, wt	
50017	<i>Archips argyrospila</i>	Fruitree leafroller	nr	dtw, ft, wt	
50018	<i>Archips cerasivorana</i>	Uglynest caterpillar	nr	dtw, ft, wt	
50019	<i>Archips crataegana</i>	Brown Oak Tortrix	nr	dtw, ft, wt	
50021	<i>Archips podana</i>	Fruitree tortrix	pv	dtw, ft, wt	
50022	<i>Archips rosana</i>	Rose tortrix	nr	dtw, ft, wt	
50020	<i>Archips xylosteana</i>	Variegated golden tortrix	nr	dtw, ft, wt	
50023	<i>Argyresthia conjugella</i>	Apple fruit moth	nr	dtw, ft, wt	
50406	<i>Argyresthia goedartella</i>	Bronze alder moth	nr	dtw, ft, wt	
50024	<i>Argyresthia pruniella</i>	Cherry fruit moth	nr	dtw, ft, wt	
50025	<i>Argyresthia thuiella</i>	Arborvitae leafminer	nr	dtw, ft, wt	
50026	<i>Argyresthia trifasciata</i>	Juniperus leafminer	nr	dtw, ft, wt	

1 nr = natural rubber, nrl = natural rubber large, pv = plastic vial, wp = wax plug, pp = Pasteur pipette, kl = kairomone lure, sp = solid plug, ol = Omnilure™, sx = special (see page 10 for a visual representation of the different types of lures.)

2 See a description of the traps and accessories on page 11 for dtw/dwt, page 12 for jt/ygb/bgb/rwst, page 13 & page 14 for ft/ftbc, page 16 for McP/dst/fft, page 17 for wt, page 18 for ppt/rft, page 19 for mft/cvt, page 20 for zt/rt.

3 To obtain the most reliable result, it is advised to change the lure every 4-8 weeks depending on the environmental situation. High temperatures, direct sunlight and wind will decrease the lifespan of a lure. When mentioned 'MT possible' we have received information from our customers that mass trapping is an option. Mass trapping may be subjected to local regulations, please consult your local regulations to ensure compliance.

4 Also attractive to *A. lineatus*, *A. obscurus*, *A. sordidus* and *A. sputator*.

Catalogue

Available pheromone lures

Article	Latin name	English name	lure type ¹	recommended trap type ²	remarks ³
50027	<i>Argyrotaenia citrana</i>	Orange tortrix	nr	dtw, ft, wt	
50028	<i>Argyrotaenia pulchellana</i>	Eulia	nr	dtw, ft, wt	
50396	<i>Argyrotaenia spheropera</i>		nr	dtw, ft, wt	
50029	<i>Argyrotaenia velutinana</i>	Redbanded leafroller	nr	dtw, ft, wt	
50030	<i>Autographa californica</i>	Alfalfa looper	nr	dtw, ft, wt	MT possible
50031	<i>Autographa gamma</i>	Silver Y moth	nr	dtw, ft, wt	MT possible
50401	<i>Bactrocera cucurbitae (combi)</i>	Fruit fly + others	wp	McP, fft	Cuelure + methyl eugenol
50032	<i>Bactrocera cucurbitae (Dacus)</i>	Melon fruit fly + other <i>Bactrocera</i> spp.	wp	McP, fft	
50033	<i>Bactrocera dorsalis (Dacus)</i>	Oriental fruit fly	wp	McP, fft	
50453	<i>Bactrocera invadens</i>	Fruit fly	wp	McP, fft	
50346	<i>Bactrocera kandiensis</i>	Fruit fly	wp	McP, fft	
50034	<i>Bactrocera oleae (Dacus)</i>	Olive fruit fly	pv	McP, fft	5
50035	<i>Bactrocera zonata (Dacus)</i>	Peach fruit fly	wp	McP, fft	
50295	<i>Bactrocera zonata 2 grams lure</i>	Peach fruit fly	wp	McP, fft	
50349	<i>Bark beetle Repellent</i>	Bark beetles	sx		
50296	<i>Batrachedra amydraula</i>	Lesser date moth	pv	dtw	
50407	<i>Bembecia chalciformis</i>		nr	dtw, ft	
50426	<i>Bembecia fokidensis</i>		nr	dtw, ft	
50036	<i>Bembecia ichneumoniformis</i>	Six-belted clearwing moth	nr	dtw, ft	
50433	<i>Bembecia scopigera</i>	Six-belted clearwing moth	nr	dtw, ft	
50037	<i>Bonagota cranaodes</i>	Brazilian apple leafroller	nr	dtw, ft	
50465	<i>Byturus tomentosus</i>	Raspberry beetle	ol	rwst	
50038	<i>Busseola fusca</i>	Maize stem borer	nr	dtw, ft, wt	
50039	<i>Cacoecimorpha pronubana</i>	Carnation tortrix	nr	dtw, ft	
50040	<i>Cactoblastis cactorum</i>	Cactus moth	nr	dtw, ft	
	<i>Caliroa cerasi</i>	Pear slug, Cherry slug		rwst	Only trap needed (page 12)
50041	<i>Cadra cautella</i>	Almond moth	nr	dtw, ft	See <i>Plodia</i> (50253)
50042	<i>Cameraria ohridella</i>	Horse chestnut leaf-miner	nr	ft	
50043	<i>Campylomma verbasci</i>	Mullein bug	pv	dtw, ft	
50379	<i>Carmenta foraseminis</i>	Cocoa fruit borer	nr	dtw, ft	
50326	<i>Carposina sasakii</i>	Peach fruit moth	nr	dtw, ft, wt	
50411	<i>Celypha striana</i>	Dandelion tortrix	nr	dtw, ft	
50044	<i>Ceratitis capitata</i>	Mediterranean fruit fly	wp	McP, fft, jt, ysp	
50238	<i>Ceratitis capitata (2 grams lure)</i>	Mediterranean fruit fly	wp	McP, fft, jt, ysp	
50045	<i>Ceratitis capitata (male and female)</i>	Mediterranean fruit fly	sx	McP, fft, jt, ysp	
50328	<i>Ceratitis cosyra</i>	Marula fruit fly	ol	McP, fft, jt, ysp	
50359	<i>Ceratitis quilicii</i>	Cape fruit fly	pp	McP, fft, jt, ysp	
50338	<i>Ceratitis rosa</i>	Natal fruit fly	wp	McP, fft, jt, ysp	
50425	<i>Chamaesphecia anatolica</i>	Nepeta clearwing	nr	dtw, ft	
50311	<i>Chamaesphecia empiformis</i>	Cypress spurge clearwing	nr	dtw, ft	
50324	<i>Chamaesphecia tenthrediniformis</i>	Spurge clearwing	nr	dtw, ft	
50366	<i>Chilo auricilius</i>	Sugarcane stalk borer	nr	dtw, ft	
50046	<i>Chilo infuscatellus</i>	Sugarcane shoot borer	nr	dtw, ft, wt	
50047	<i>Chilo partellus</i>	Spotted stalk borer	nr	dtw, ft, wt	

5 The pheromone lure for *Bactrocera oleae* contains 20 mg pheromone impregnated in a polyethylene lure. The liquid pheromone may not be visible in the vial. This will not negatively affect efficacy of the lure.

Catalogue

Available pheromone lures

Article	Latin name	English name	lure type ¹	recommended trap type ²	remarks ³
50048	<i>Chilo sacchariphagus indicus</i>	Sugarcane stem borer	nr	dtw, ft, wt	
50049	<i>Chilo suppressalis</i>	Asiatic rice borer	nr	dtw, ft, wt	
50050	<i>Choristoneura fumiferana</i>	Eastern spruce budworm	nr	dtw, ft	
50051	<i>Choristoneura hebenstreitella</i>	Mountain-ash tortricid	nr	dtw, ft	
50052	<i>Choristoneura rosaceana</i>	Obliquebanded leafroller	nr	dtw, ft	
50053	<i>Chrysodeixis chalcites</i>	Tomato looper	pv	dtw	
50054	<i>Chrysoteuchia topiaria</i>	Cranberry girdler	nr	dtw, ft	
50055	<i>Clepsis spectrana</i>	Cabbage leafroller	pv	dtw	
50058	<i>Cnaphalocrocis medinalis (Indian blend)</i>	Rice leaffolder moth	nr	dtw, ft	
50059	<i>Cnaphalocrocis medinalis (Japanese blend)</i>	Rice leaffolder moth	nr	dtw, ft	
50056	<i>Cnephasia pumicana</i>	Cereal tortrix	pv	dtw	
50356	<i>Coleophora hemerobiella</i>	Rice leaffolder moth	nr	dtw	
50357	<i>Coleophora laricella</i>	Western larch case-bearer	nr	dtw, ft	
50344	<i>Conopomorpha cramerella</i>	Cocoa pod borer	nr	dtw, ft, wt	
50390	<i>Contarinia nasturtii</i>	Swede midge	nr	dtw	
50060	<i>Copitarsia decolora</i>	Mexican copitarsia	nr	dtw, ft, wt	
50302	<i>Copitarsia incommoda</i>	Quinoa copitarsia	nr	dtw, ft, wt	
50061	<i>Cosmopolites sordidus (45 days)</i>	Black banana weevil	sx	special	Please inquire
50339	<i>Cosmopolites sordidus (90 days)</i>	Black banana weevil	sx	special	Please inquire
50062	<i>Cossus cossus</i>	European goat moth	nr	dtw, ft	
50384	<i>Crocidolomia binotalis</i>	Large cabbage-heart caterpillar, Cabbage Webworm Moth	nr	dtw, ft	
50244	<i>Cryptoblabes gnidiella</i>	Asiatic rice borer, Striped stemborer	nr	dtw, ft, wt	
50063	<i>Cryptophlebia ombrodelta</i>	Macadamia nut borer	nr	dtw, ft, wt	
50413	<i>Cucullia chamomillae</i>	Chamomile shark	nr	dtw, ft	
50093	<i>Cydalima perspectalis</i>	Box tree pyralid	pv	ft	
50064	<i>Cydia caryana</i>	Hickory shuckworm	nr	dtw, ft, wt	
50065	<i>Cydia fagiglandana</i>	Beech Moth	nr	dtw, ft, wt	
50067	<i>Cydia funebrana (Grapholita)</i>	Plum fruit moth	nr	dtw, ft, wt	
50436	<i>Cydia illutana</i>		nr	dtw, ft	
50408	<i>Cydia indivisa</i>		nr	dtw, ft	
50412	<i>Cydia medicaginis</i>	Alfalfa Moth	nr	dtw, ft	
50068	<i>Cydia nigricana (Laspeyresia)</i>	Pea moth	nr	dtw, ft, wt	
50409	<i>Cydia pactolana</i>	Spruce bark tortrix	nr	dtw, ft	
50069	<i>Cydia pomonella</i>	Codling moth	nr	dtw, ft, wt	
50294	<i>Cydia pomonella (10mg CM + 3mg DA)</i>	Codling moth	nr	dtw, ft, wt	
50070	<i>Cydia pomonella (superlure, 12 mg)</i>	Codling moth	nrl	dtw, ft, wt	
50297	<i>Cydia pomonella combi</i>	Codling moth combi	pv	dtw, ft, wt	
50262	<i>Cydia pomonella females!</i>	Codling moth female	pv	dtw, ft, wt	
50071	<i>Cydia pyrivora</i>	Pear tortrix	nr	dtw, ft, wt	
50416	<i>Cydia servillana</i>	Sallow-shoot Piercer	nr	dtw, ft	
50072	<i>Cydia splendana (Northern Europe)</i>	Chestnut tortrix	nr	dtw, ft, wt	
50376	<i>Cydia splendana (Southern Europe)</i>	Chestnut tortrix	nr	dtw, ft, wt	
50323	<i>Cydia strobilella</i>	Spruce cone moth	nr	dtw, ft	
50410	<i>Cydia zebeana</i>	Larch bark moth	nr	dtw, ft	
50066	<i>Cylas formicarius elegantulus</i>	Sweetpotato weevil	nr	wt	
50373	<i>Cylas puncticollis</i>	Sweetpotato weevil	nr	ft	

Catalogue

Available pheromone lures

Article	Latin name	English name	lure type ¹	recommended trap type ²	remarks ³
50394	<i>Dacus frontalis</i>	Pumpkin fly	wp	McP, fft	
50335	<i>Deilephila elpenor</i>	Elephant Hawk Moth	nr	dttd/dtw, ft	
50073	<i>Dendrolimus pini</i>	Pine moth	nr	dttd/dtw, ft	
50352	<i>Dendrolimus sibiricus</i>	Siberian moth	nr	dttd/dtw, ft	
50076	<i>Diabrotica virgifera</i>	Western corn rootworm	nr	special	Please inquire
50074	<i>Diatraea grandiosella</i>	Southwestern corn borer	nr	dttd/dtw	
50075	<i>Diatraea saccharalis</i>	Sugarcane borer	nr	dttd/dtw	
50077	<i>Dioryctria abietella</i>	Fir coneworm	nr	dttd/dtw, ysp	
50398	<i>Dioryctria mendacella</i>	Cone moth	nr	dttd/dtw, ft	
50078	<i>Drosophila melanogaster</i>	Common fruit fly			6
50079	<i>Duponchelia fovealis</i>	European pepper moth	nr	dttd/dtw, ft, wt	MT possible
50080	<i>Earias insulana</i>	Spiny bollworm	nr	dttd/dtw, ft	
50081	<i>Earias vittella</i>	Spotted bollworm	nr	dttd/dtw, ft	
50330	<i>Ecdytolopha aurantiana</i>	Citrus fruit borer	nr	dttd/dtw, ft	
50351	<i>Ecdytolopha torticornis</i>	Macadamia nutborer	nr	dttd/dtw, ft	
50082	<i>Elasmopalpus lignosellus</i>	Lesser cornstalk borer	nr	dttd/dtw, ft	
50374	<i>Elater ferrugineus</i>	Rusty click beetle	nr	ft	
50083	<i>Enarmonia formosana</i>	Cherrybark tortrix moth	nr	dttd/dtw, ft	
50084	<i>Endopiza viteana (Paralobesia)</i>	Grape berry moth	nr	dttd/dtw, ft	
50343	<i>Endothenia quadrimaculana</i>	Blotched Marble	nr	dttd/dtw, ft	
50441	<i>Eoreuma loftini</i>	Mexican rice borer	nr	dttd/dtw, ft	
50085	<i>Ephestia elutella</i>	Tobacco moth, Warehouse moth	nr		See <i>Plodia</i> (50253)
50086	<i>Ephestia kuehniella</i>	Mediterranean flour moth	nr		See <i>Plodia</i> (50253)
50258	<i>Epichoristodes acerbella</i>	South-African carnation tortrix	nr	dttd/dtw, ft	
50439	<i>Epinotia aporema</i>	Bean shoot moth, Soybean bud borer	nr	dttd, ft	
50414	<i>Epinotia nanana</i>	European spruce needleminer	nr	dttd/dtw, ft	
50087	<i>Epiphyas postvittana</i>	Light brown apple moth	nr	dttd/dtw	
50256	<i>Epiphyas postvittana (10 mg)</i>	Lightbrown apple moth (LBAM)	nr	dttd/dtw	
50331	<i>Etiella zinckenella</i>	Limabean Pod Borer	nr	dttd/dtw, ft	
50088	<i>Eupoecilia ambiguella</i>	European grape berry moth	nr	dttd/dtw, ft	
50375	<i>Euproctis chrysorrhoea</i>	Brown-tailed moth	nr	dttd/dtw, ft	
50381	<i>Euproctis pseudoconspersa</i>	Tea tussock moth	nr	dttd/dtw, ft	
50353	<i>Eurysacca quinoae</i>	Quinoa moth	nr	dttd/dtw, ft, wt	
50415	<i>Euxoa ochrogaster</i>	Redbacked cutworm	nr	dttd/dtw, ft	
50303	<i>Euzophera bigella</i>	Quince moth	nr	dttd/dtw, ft	
50249	<i>Euzophera pinguis</i>	Tabby Knot-horn	nr	dttd/dtw, ft	
50089	<i>Euzophera punicaella</i>	Pyalidae moth	nr	dttd/dtw, ft	
50306	<i>Euzophera semifuneralis</i>	American plum borer	nr	dttd/dtw, ft	
50090	<i>Evergestis forficalis</i>	Garden pebble moth	nr	dttd/dtw, ft	
50291	<i>Felderiola candescens</i>	Rooibos clearwing	nr	dttd/dtw, ft (gr/gr/gr)	
50092	<i>Fumibotys fumalis</i>	Mint root borer	nr	dttd/dtw	
50438	General male/female moth lure Gen. A				7
50462	General male/female moth lure Gen. B				7
50094	<i>Gortyna xanthenes</i>	Artichoke moth	nr	dttd/dtw, ft	
50332	<i>Grapholita dimorpha</i>	Hawthorn leafroller	nr	dttd/dtw, ft	

6 For *Drosophila melanogaster* we can supply the pheromone compound 'cis-vaccenyl acetate'.
 7 Pherobank is developing several types of kairomone lures. Please inquire.

Catalogue

Available pheromone lures

Article	Latin name	English name	lure type ¹	recommended trap type ²	remarks ³
50268	<i>Grapholita inopinata</i>	Manchurian fruit moth	nr	dtw	
50095	<i>Grapholita janthinana (Cydia)</i>	Hawthorn-berry moth	nr	dtw, ft	
50096	<i>Grapholita lobarzewskii</i>	Appleseed moth	nr	dtw, ft	
50097	<i>Grapholita molesta (Cydia)</i>	Oriental fruit moth	nr	dtw, ft	
50098	<i>Grapholita molesta (superlure, 10 mg)</i>	Oriental fruit moth	nr	dtw, ft	
50307	<i>Grapholita packardii</i>	Cherry fruitworm	nr	dtw, ft	
50099	<i>Grapholita prunivora</i>	Lesser apple worm	nr	dtw, ft	
50100	<i>Gypsonoma aceriana</i>	Poplar shoot borer	nr	dtw	
50334	<i>Halyomorpha halys</i>	Brown marmorated stink bug	pv	ysp	
50101	<i>Hedya nubiferana (H. dimidioalba)</i>	Green budmoth	nr	dtw	
50102	<i>Helicoverpa armigera</i>	Cotton bollworm	nr	dtw, ft, wt, ht	MT possible
50103	<i>Helicoverpa assulta</i>	Oriental tobacco budworm	nr	dtw, ft, wt, ht	MT possible
50424	<i>Helicoverpa gelotopoeon</i>	South American bollworm moth	pv	dtw, ft, wt, ht	
50104	<i>Helicoverpa punctigera (Heliothis)</i>	Native budworm	nr	dtw, ft, wt, ht	
50251	<i>Helicoverpa quinoa</i>	Quinoa bollworm	nr	dtw, ft, wt, ht	MT possible
50391	<i>Helicoverpa subflexa</i>	Oriental tobacco budworm	nr	dtw, ft, wt, ht	
50367	<i>Heliothis peltigera</i>	Bordered straw	nr	dtw, ft, wt, ht	
50105	<i>Heliothis virescens</i>	Tobacco budworm	nr	dtw, ft, wt, ht	
50405	<i>Heliothis viriplaca</i>	Marbled clover	nr	dtw, ft, wt, ht	
50106	<i>Heliothis zea</i>	Corn earworm	nr	dtw, ft, wt, ht	
50107	<i>Hellula undalis</i>	Cabbage webworm	nr	dtw, ft, wt	MT possible
50108	<i>Hemileuca maia</i>	(Eastern) Buckmoth	nr	dtw	
50109	<i>Homoeosoma electellum</i>	Sunflower moth	nr	dtw	
	<i>Hoplocampa testudinea</i>	Apple sawfly	nr	rwst	Only trap needed (page 12)
50112	<i>Ichneumenoptera cf. xanthosoma</i>	Cinnamon clearwing moth	nr	dtw, ft, wt	
50111	<i>Ichneumenoptera chrysophanes</i>	Clearwing persimmon borer	nr	dtw, ft, wt	
50298	<i>Ips acuminatus (Omnilure)</i>	Engraver beetle special	ol	mft	Min. 100 lures/order
50301	<i>Ips cembrae (Omnilure)</i>	Large larch bark beetle special	ol	mft	Min. 100 lures/order
50299	<i>Ips sexdentatus (Omnilure)</i>	Six-spined engraver beetle special	ol	mft	Min. 100 lures/order
50456	<i>Ips typographus (Omnilure)</i>	European spruce bark beetle	ol	mft	
50113	<i>Keiferia lycopersicella</i>	Tomato pinworm	nr	dtw, ft, wt	
50237	<i>Kermania pistaciella</i>	Pistachio twig borer	nr	dtw, ft	
50114	<i>Lacanobia oleracea (Mamestra)</i>	Bright-line brown-eye moth	nr	dtw, ft	
50312	<i>Lampronia capitella</i>	Currant shoot borer	nr	dtw, ft	
50115	<i>Lasioderma serricorne</i>	Cigarette beetle	pv	dtw	
50315	<i>Leguminivora glycinivorella</i>	Soybean pod borer	nr	dtw, ft	
50431	<i>Leucinodes cordalis</i>	Eggfruit caterpillar	nr	dtw	
50116	<i>Leucinodes orbonalis</i>	Eggplant borer	nr	dtw, ft	
50117	<i>Leucoptera scitella (L. malifoliella)</i>	Apple circular leaf miner	nr	dtw	
50118	<i>Lobesia botrana</i>	Grapevine moth	nr	dtw, ft	
50119	<i>Loxagrotis albicosta</i>	Western bean cutworm	nr	dtw, ft	
50120	<i>Lymantria dispar</i>	Gypsy moth	nr	dtw, ft	
50239	<i>Lymantria monacha</i>	Nun moth	nr	dtw, ft	
50121	<i>Lyonetia clerkella</i>	Apple leaf miner	nr	dtw, ft	
50454	<i>Malacosoma americanum</i>	Eastern tent caterpillar	nr	dtw, ft	MT possible
50395	<i>Malacosoma neustria</i>	Common lackey	nr	dtw, ft	

Article	Latin name	English name	lure type ¹	recommended trap type ²	remarks ³
50350	<i>Maladera insanabilis</i>		sx	ftbc (gr/ye/gr/tr)	
50293	<i>Maliarpha separatella</i>	African white stemborer	nr	dttd/dtw, ft	
50122	<i>Mamestra brassicae</i>	Cabbage moth	nr	dttd/dtw, ft	
50123	<i>Mamestra configurata</i>	Bertha armyworm	nr	dttd/dtw, ft, wt	
50372	<i>Margarodes prieskaensis</i>	Ground pearl	nr	Special	Please inquire
50124	<i>Maruca vitrata</i>	Legume pod borer	nr	dttd/dtw, ft	
50125	<i>Melissopus latiferreanus</i>	Filbertworm	nr	dttd/dtw, ft	
50126	<i>Melittia cucurbitae</i>	Squash vine borer	nr	dttd/dtw, ft	
50316	<i>Melolontha combilure</i>	Cockchafer	pp	ftbc	
50127	<i>Melolontha melolontha</i>	Cockchafer	pp	ftbc	
50128	<i>Mnesampela privata</i>	Autumn gum moth	nr	dttd/dtw, ft	
50250	<i>Monochamus galloprovincialis</i>	Black pine sawyer beetle	sx	mft	
50129	<i>Musca domestica</i>	House fly	nr	UV-light trap	
50236	<i>Mythimna loreyi</i>	Lorey leafworm	nr	dttd/dtw, ft	
50382	<i>Mythimna separata</i>	Oriental armyworm	pv	dttd/dtw, ft	
50130	<i>Mythimna unipuncta</i>	True armyworm	nr	dttd/dtw, ft, wt	
50370	<i>Nemapogon granella</i>	European grain moth	nr	dttd/dtw, ft	
50417	<i>Nemapogon inconditella</i>		nr	dttd/dtw, ft	
50131	<i>Neoleucinodes elegantalis</i>	Tomato fruit borer	nr	dttd/dtw, ft, wt	
50329	<i>Oidaematophorus espeletiae</i>		nr	dttd/dtw, ft	
50132	<i>Operophtera brumata</i>	Winter moth	nr	dttd/dtw, ft	
50133	<i>Opogona sacchari</i>	Banana moth	pv	dttd/dtw, ft, wt	MT possible
50135	<i>Orgyia antiqua</i>	Vapourer moth, Rusty tussock moth	nr	dttd/dtw, ft	
50136	<i>Orgyia pseudotsugata</i>	Douglas-fir tussock moth	nr	dttd/dtw, ft	
50137	<i>Orthosia cerasi (O. stabilis)</i>	Powered quaker moth	nr	dttd/dtw, ft	
50138	<i>Orthosia gothica</i>	Hebrew character	nr	dttd/dtw, ft	
50260	<i>Orthosia gracilis</i>	Powdered quaker moth	nr	dttd/dtw, ft	
50139	<i>Orthosia hibisci</i>	Speckled green	nr	dttd/dtw, ft	
50140	<i>Orthosia incerta</i>	Clouded drab moth	nr	dttd/dtw, ft	
50317	<i>Oryctes rhinoceros</i>	Coconut rhinoceros beetle	pv	mft, rpt	
50141	<i>Ostrinia furnacalis</i>	Asian corn borer	nr	dttd/dtw, ft	
50145 ⁸	<i>Ostrinia nubilalis (ES-strain)</i>	European corn borer (Spain)	nr	ht, dttd/dtw, ft	
50142 ⁶	<i>Ostrinia nubilalis (E-strain)</i>	European corn borer	nr	ht, dttd/dtw, ft	
50144 ⁶	<i>Ostrinia nubilalis (EZ-strain)</i>	European corn borer	nr	ht, dttd/dtw, ft	
50143 ⁶	<i>Ostrinia nubilalis (Z-strain)</i>	European corn borer	nr	ht, dttd/dtw, ft	
50388	<i>Otiorhynchus sulcatus</i>	Black vine weevil	ol	rt	
50248	<i>Palpita unionalis</i>	Jasmine moth	nr	dttd/dtw, ft	
50146	<i>Pammene argyrana</i>	Early fruit moth	nr	dttd/dtw	
50147	<i>Pammene fasciana</i>	Chestnut leafroller	nr	dttd/dtw	
50148	<i>Pammene rhediella</i>	Fruitlet mining tortrix	nr	dttd/dtw	
50418	<i>Pammene suspectana</i>	Ash-bark Piercer	nr	dttd/dtw	
50149	<i>Pandemis cerasana</i>	Barred fruit tree tortrix	nr	dttd/dtw	
50150	<i>Pandemis heparana</i>	Dark oblique-barred twist	nr	dttd/dtw	
50151	<i>Pandemis limitata</i>	Threelined leafroller	nr	dttd/dtw	
50152	<i>Panolis flammea</i>	Pine beauty moth	nr	ft	

8 The Heliothis trap (ht) is a special trap for *Ostrinia* and *Heliothis* species. For *Ostrinia* the trap is much more efficient in comparison with other traps. Please inquire about availability

Catalogue

Available pheromone lures

Article	Latin name	English name	lure type ¹	recommended trap type ²	remarks ³
50369	<i>Paranthrene insolita</i>		nr	dtw, ft	
50255	<i>Paranthrene robiniae</i>	Western poplar clearwing	nr	dtw, ft	
50153	<i>Paranthrene tabaniformis</i>	Poplar twig borer	nr	dtw, ft, wt	MT possible
50154	<i>Parapediasia teterella</i>	Bluegrass webworm	nr	dtw	
50155	<i>Pectinophora gossypiella</i>	Pink bollworm	nr	dtw, ft, wt	
50257	<i>Pectinophora malvella</i>	Hollyhock seed moth	nr	dtw, ft	
50385	<i>Pennisetia bohémica</i>	Bohemian clearwing	nr	dtw, ft	
50156	<i>Pennisetia hylaeiformis</i>	Raspberry clearwing moth	nr	dtw, ft	
50157	<i>Peridroma saucia</i>	Variegated cutworm	nr	dtw, ft, wt	
50158	<i>Phthorimaea operculella</i>	Potato tuberworm moth	nr	dtw, ft, wt	MT possible
50159	<i>Phyllocnistis citrella</i>	Citrus leafminer	nr	dtw	
50160	<i>Phyllonorycter blancardella</i>	Spotted tentiform leafminer	pv	dtw, ft	
50161	<i>Phyllonorycter corylifoliella</i> (<i>Lithocolletis</i>)	Upper leaf surface mining moth	nr	dtw, ft	
50162	<i>Phyllopertha horticola</i>	Garden chafer	pp	ftbc (gr/ye/gr/tr)	
50397	<i>Piezodorus hybneri</i>	Red-banded shield bug	pv	special	Please inquire
50371	<i>Pityophthorus juglandis</i>	Walnut twig beetle	ol	mft, ftbc	
50163	<i>Planococcus citri</i>	Citrus mealy bug	nr	dtw, ft, wt	MT possible
50164	<i>Planococcus ficus</i>	Vine mealy bug	nr	dtw, ft	
50165	<i>Platynota flavedana</i>	Variegated leafroller	nr	dtw, ft	
50166	<i>Platynota idaeusalis</i>	Tufted apple bud moth	nr	dtw, ft	
50167	<i>Platynota stultana</i>	Omnivorous leafroller	nr	dtw, ft	
50168	<i>Platyptilia carduidactyla</i>	Artichoke plume moth	nr	dtw, ft, wt	
50457	<i>Platypus cylindrus</i> (<i>Omnilure</i>)	Oak pinhole borer	ol	mft	
50333	<i>Plautia stali</i>	Brown-winged green bug	pv	ftbc	
50169	<i>Plodia interpunctella</i>	Indian meal moth	nr	dtw, ft	See <i>Plodia</i> (50253)
50253	<i>Plodia/Ephestia/Cadra</i>	Different stored product moths	nr	dtw, ft	
50170	<i>Plutella xylostella</i>	Diamondback moth	nr	dtw, ft, wt	
50361	<i>Plutella xylostella</i> (<i>Peru/Chile</i>)	Diamondback moth	nr	dtw, ft, wt	
50368	<i>Plutella xylostella</i> <i>Bolivia</i>	Diamondback moth	nr	dtw, ft, wt	
50171	<i>Podosecia syringae</i>	Ash borer	nr	dtw, ft	
50313	<i>Popillia japonica</i>	Japanese beetle	pp	ftbc (gr/ye/gr/tr)	
50172	<i>Prays citri</i>	Citrus flower moth	nr	dtw, ft	
50173	<i>Prays oleae</i>	Olive moth	nr	dtw, ft	
50308	<i>Proeulia auraria</i>	Chilean fruit leafroller	nr	dtw, ft	
50458	<i>Pseudaulacaspis pentagona</i>	White peach scale, Mulberry scale	nr	dtw, ysp	Experimental
50400	<i>Pseudococcus comstocki</i>	Comstock mealybug	nr	dtw	
50389	<i>Pseudococcus longispinus</i>	Long-tailed mealybug	nr	dtw	
50402	<i>Pseudococcus viburni</i>	Californian mealybug	nr	dtw	
50174	<i>Ptycholoma lecheana</i>	Leche's twist moth	nr	dtw	
50420	<i>Pyropteron affinis</i>		nr	dtw, ft	
50434	<i>Pyropteron chrysidiforme</i>	Fiery clearwing	nr	dtw, ft	
50435	<i>Pyropteron muscaeformis</i>	Thrift Clearwing	nr	dtw, ft	
50245	<i>Quadraspidotus perniciosus</i>	San José scale	nr	ysp, dtw	
50419	<i>Recurvaria nanella</i>	Lesser budmoth	nr	dtw, ft	
50461	<i>Resseliella theobaldi</i>	Raspberry cane midge	nr	dtw, ysp	Experimental
50437	<i>Retinia perangustana</i>		nr	dtw, ft	

Catalogue

Available pheromone lures

Article	Latin name	English name	lure type ¹	recommended trap type ²	remarks ³
50175	<i>Rhagoletis cerasi</i>	European cherry fruit fly	sp	ysp, McP	
50364	<i>Rhagoletis completa</i>	Walnut husk fly	sp	ysp, McP	
50336	<i>Rhagoletis fausta</i>	Black cherry fruit fly	sp	ysp, McP	
50358	<i>Rhagoletis pomonella</i>	Apple Maggot Fly	sp	ysp, McP	
50176	<i>Rhopobota naevana</i>	Blackheaded fireworm	nr	dtw	
50177	<i>Rhyacionia buoliana</i>	European pine shoot moth	nr	dtw	
50178	<i>Rhynchophorus ferrugineus</i>	Red palm weevil	ol	rpt	MT possible
50314	<i>Rhynchophorus palmarum</i>	South American palm weevil	sx	rpt	
50179	<i>Rhyzopertha dominica</i>	Lesser grain borer	nr	special	Pitfall trap
50180	<i>Riptortus clavatus</i>	Bean bug	pv	ft	
50246	<i>Saturnia pavonia</i>	Small emperor moth	nr	dtw, ft	
50345	<i>Scirpophaga incertulas</i>	Rice stem borer, Yellow stem borer	nr	ft	
50181	<i>Scirpophaga nivella</i>	Sugarcane top borer	nr	ft (tr/tr/tr)	
50464	<i>Scolytus amygdali</i>		ol	mft	Experimental
50393	<i>Scotinophara lurida</i>	Black rice stink bug	pv		
50182	<i>Scrobipalpa ocellatella</i>	Beet moth	nr	dtw	
50184	<i>Sesamia calamistis</i>	Pink maize borer	nr	dtw, ft	
50304	<i>Sesamia cretica</i>	Durra stem borer	nr	ft	
50185	<i>Sesamia inferens</i>	Purple stem borer	nr	dtw, ft	
50186	<i>Sesamia nonagrioides</i>	Pink stalk borer	nr	dtw, ft	
50183	<i>Sesia apiformis</i>	Hornet moth	nr	dtw, ft	
50427	<i>Sesia bembeciformis</i>	Lunar hornet moth	pv	dtw, ft	
50187	<i>Setora nitens</i>	Coconut nettle caterpillar	nr	dtw, ft	
50188	<i>Setothosea asigna</i>	Nettle caterpillar	nr	dtw, ft	
50189	<i>Sitodiplosis mosellana</i>	Orange wheat blossom midge	nr	dtw, ft	
50446	<i>Sitona lineatus</i>	Pea leaf weevil	nr	special	Pitfall trap
50190	<i>Sitotroga cerealella</i>	Angoumois grain moth	nr	dtw	
50191	<i>Sparganothis pilleriana</i>	Grape-berry moth	nr	dtw	
50192	<i>Sparganothis sulfureana</i>	Sparganothis fruitworm	nr	dtw	
50342	<i>Spilonota laricana</i>	Larch bud moth	nr	dtw, ft, wt	
50193	<i>Spilonota ocellana</i>	Eye-spotted budmoth	nr	dtw, ft, wt	
50387	<i>Spodoptera dolichos</i>	Larger cotton cutworm	nr	dtw, ft, wt	
50194	<i>Spodoptera eridania</i>	Southern armyworm	nr	dtw, ft, wt	
50195	<i>Spodoptera exempta</i>	Nutgrass armyworm	nr	dtw, ft, wt	
50196	<i>Spodoptera exigua</i>	Beet armyworm	nr	dtw, ft, wt	
50197	<i>Spodoptera frugiperda</i>	Fall armyworm	nr	dtw, ft, wt	
50198	<i>Spodoptera littoralis</i>	Egyptian cotton leafworm	nr	dtw, ft, wt	
50199	<i>Spodoptera litura</i>	Tobacco cutworm	nr	dtw, ft, wt	
50452	<i>Spodoptera ochrea</i>		nr	dtw, ft, wt	
50200	<i>Spodoptera praefica</i>	Western yellowstriped armyworm	nr	dtw, ft, wt	
50325	<i>Stenoma catenifer</i>	Avocado seed moth	nr	dtw, ft	
50341	<i>Strauzia longipennis</i>	Peacock fly	sp	ysp, McP	
50201	<i>Symmetrischema tangolias</i>	Andean Potato Tuber Moth	nr	dtw, ft, wt	MT possible
50243	<i>Synanthedon andrenaeformis</i>	Orange-tailed clearwing	nr	dtw, ft	
50202	<i>Synanthedon bibionipennis</i>	Strawberry crown moth	nr	dtw, ft	
50355	<i>Synanthedon codeti</i>		nr	dtw, ft	

Catalogue

Available pheromone lures

Article	Latin name	English name	lure type ¹	recommended trap type ²	remarks ³
50203	<i>Synanthedon conopiformis</i>	Dale's Oak Clearwing	nr	dtw, ft	
50204	<i>Synanthedon culiciformis</i>	Large red-banded clearwing moth	nr	dtw, ft	
50205	<i>Synanthedon exitiosa</i>	Peachtree borer	nr	dtw, ft	
50206	<i>Synanthedon flaviventris</i>	Sallow Clearwing	pv	dtw, ft	
50207	<i>Synanthedon formicaeformis</i>	Red-tipped clearwing moth	nr	dtw, ft	
50290	<i>Synanthedon loranthi</i>		nr	dtw, ft	
50266	<i>Synanthedon mesiaeformis</i>		nr	dtw, ft	
50208	<i>Synanthedon myopaeformis</i>	Apple clearwing moth	pv	dtw, ft	
50209	<i>Synanthedon pictipes</i>	Lesser peachtree borer	pv	dtw, ft	
50210	<i>Synanthedon polaris</i>	Polar clearwing moth	nr	dtw, ft	
50211	<i>Synanthedon scitula</i>	Dogwood borer	nr	dtw, ft	
50212	<i>Synanthedon scoliaeformis</i>	Welsh clearwing moth	nr	dtw, ft	
50213	<i>Synanthedon sequoiae</i>	Sequoia pitch moth	nr	dtw, ft	
50214	<i>Synanthedon soffneri</i>	Honeysuckle clearwing moth	pv	dtw, ft	
50264	<i>Synanthedon spheciformis</i>	White-barred Clearwing	nr	dtw, ft	
50263	<i>Synanthedon spuleri</i>		nr	dtw, ft	
50215	<i>Synanthedon tipuliformis</i>	Currant clearwing moth	nr	dtw, ft	
50216	<i>Synanthedon vespiformis</i>	Yellowlegged clearwing moth	pv	dtw, ft	
50217	<i>Syndemis musculana</i>	Autumn leafroller	nr	dtw, ft	
50421	<i>Syngrapha ain</i>		nr	dtw, ft	
50218	<i>Tecia solanivora (Scrobipalopsis)</i>	Guatemalan potato moth	nr	dtw, ft, wt	MT possible
50442	<i>Tetranychus urticae</i>	Red spider mite	ol	ysp	
50219	<i>Thaumatotibia leucotreta</i>	False codling moth	nr	dtw, ft	
50404	<i>Thaumatotibia leucotreta (Middle East/Asia)</i>	False codling moth	nr	dtw, ft	
50378	<i>Thaumatotibia leucotreta superlure</i>	False codling moth	pv	dtw, ft	
50220	<i>Thaumetopoea pityocampa</i>	Pine procession moth	nr	ft	
50221	<i>Thaumetopoea pityocampa (long life, 10 mg)</i>	Pine procession moth	pv	ft	9
50222	<i>Thaumetopoea processionea</i>	Oak processionary moth	nr	ft	
50429	<i>Thrips species (Omnilure)</i>	Thrips species	ol	ysp	10
50440	<i>Thysanoplusia orichalcea</i>	Slender burnished-brass moth	nr	dtw, ft, wt	
50224	<i>Tineola bisselliella</i>	Webbing clothes moth	pv	dtw	
50225	<i>Tortrix viridana</i>	European oak leafroller	nr	dtw	
50226	<i>Trichoplusia ni</i>	Cabbage looper	nr	dtw, ft, wt	
50432	<i>Trichopteryx polyommata</i>	Barred tooth striped moth	nr	dtw	
50227	<i>Trigonotylus caelestialium</i>	Rice leaf bug	pv	wsp	
50267	<i>Trogoderma granarium</i>	Khapra Beetle	nr	dtw	
50235	<i>Tuta absoluta (0.5 mg)</i>	Tomato leafminer	nr	dtw, wt	MT possible
50228	<i>Tuta absoluta (0.8 mg)</i>	Tomato leafminer	nr	dtw, wt	MT possible
50265	<i>Tuta absoluta long life</i>	Tomato leafminer	pv	dtw, wt	MT possible
50229	<i>Vitacea polistiformis</i>	Grape root borer	nr	dtw	
50230	<i>Xylomyges curialis</i>	Citrus cutworm	nr	dtw, wt	
50231	<i>Yponomeuta evonymella</i>	Bird-cherry ermine moth	nr	dtw	
50232	<i>Yponomeuta malinellus</i>	Apple ermine moth	nr	dtw	
50233	<i>Yponomeuta padella</i>	Orchard ermine moth	nr	dtw	11

9 The long-life lure for *Thaumetopoea pityocampa* will remain attractive for 180-200 days.

10 Attractive to *Frankliniella occidentalis*, *Thrips tabaci*, *Thrips major* and possible other *Thrips* species

11 In Dutch apple orchards *Yponomeuta padella* is the principal species, not *Yponomeuta malinellus*!

Catalogue

Available pheromone lures

Article	Latin name	English name	lure type ¹	recommended trap type ²	remarks ³
50259	<i>Zeiraphera diniana</i>	Larch budmoth	nr	dttdtw	
50234	<i>Zeuzera pyrina</i>	Leopard moth	pv	ft, zt	
50422	<i>Zygaena viciae</i>	New Forest burnet	nr	dttdtw	

For non-listed species please inquire at info@pherobank.com



Omnilure™ (ol) (left: closed, right: activated)



plastic vial type lures (pv)
(left: normal, right: high loading)



Natural rubber type lures (left nrl, middle: nr, right: nr in green) (colours: green, blue, white, black and violet. inquire for possibilities)



Solid plug lure (sp)



Different types of wax plug lures (wx)



Customized sachets for packaging.



Pasteur pipette lures (pp)



Deilephila elpenor



Saturnia pavonia

Delta traps (dtt and dtw)

Pherobank offers two different types of delta traps: a budget-priced transparent delta trap (dtt) and a stronger, larger white delta trap (dtw) (different colours available, please inquire for the possibilities). The transparent delta trap is unattractive to insects and is therefore the least discriminating trap available. The transparent delta trap is supplied with a metal wire and is available in a set of 10 or 50 traps. The transparent delta trap sticky inserts, which are available separately in boxes of 20, are used to complete the trap. These inserts are composed of PVC and a single side is coated with a thin, high-quality, non-drying glue.



Transparent delta trap with a lure suspended above the sticky insert.

Pherobank also offers a larger, more robust white polypropylene delta trap. This trap has a larger sticky surface and is therefore better suited to trapping larger insects. This trap is sold in sets of 10 including one sticky insert and a hanger per trap. Additional sets of sticky inserts for this trap can be ordered separately. The white delta trap comes standard with the Pherobank name and logo printed on it, but we will be happy to provide non-printed traps as well as traps with your logo printed on them; please inquire for more information.



White delta trap with Pherobank logo.



Box of 20 sticky inserts for transparent delta trap.



Set of 10 sticky inserts for white delta trap.

Delta traps and accessories

Article	Description	Dimensions per trap (assembled)	Weight per trap
33204	Transparent delta trap (set of 10)	21 cm x 10 cm x 8.5 cm (l x w x h)	30 grams
33205	Sticky inserts for transparent delta trap (box of 20)	10 cm x 17 cm (l x w)	10 grams
33211	White delta trap with Pherobank logo (set of 10)	27 cm x 17 cm x 10.5 cm (l x w x h)	124 grams
33213	White delta trap without logo (set of 10)	27 cm x 17 cm x 10.5 cm (l x w x h)	124 grams
33214	Sticky inserts for white delta trap (set of 10)	18 cm x 18 cm (l x w)	22 grams
33215	White delta trap with custom logo (set of 10)	27 cm x 17 cm x 10.5 cm (l x w x h)	124 grams
33216	Transparent delta trap (set of 50)	21 cm x 10 cm x 8.5 cm (l x w x h)	30 grams

Jackson trap (jt)

The Jackson trap is an easy to use and low cost trap. It is made of water resistant plasticised white cardboard. The Sticky insert has a black grid printed on it for easier counting. The wire hanger makes for easy hanging to natural or artificial support. The lure clip is used to suspend a lure in the middle of the trap and for easy replacement of the lure without replacing the sticky insert. The side of the trap has a control sheet printed to record its location, date of placement and revision dates.



(left) Assembled Jackson trap with wire hanger,
(right top) Folded sticky insert for Jackson trap.
(right bottom) Unassembled Jackson trap.

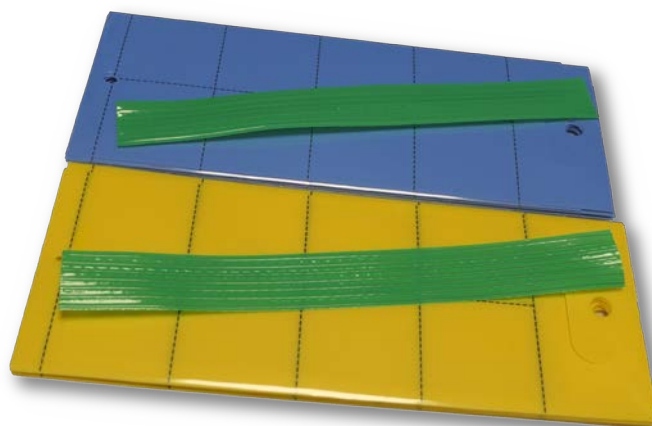


Rebell® white cross-vane trap in raspberry bushes

Yellow & Blue glue board (ysp & bsp)

The yellow and blue glue boards are simple and cheap traps to determine if pests are present. The colour of the glue board attracts certain pests without the need for pheromones and/or attractants. The glue board has a black grid printed on it for easier counting. The traps are supplied with a wire for easy hanging to a natural or artificial support. The glue board also features several holes to suspend the trap above a plant on a wire.

The yellow and blue glue boards are available in sets of 10.



Yellow and blue glue boards.

Rebell® white cross-vane trap (rwst)

The Rebell® trap is a white sticky cross-vane trap can be used for monitoring apple sawfly, plum sawfly and raspberry beetle. The plastic has an integrated UV-filter to protect the colour to ensure the specific shade of white does not fade over time.

The Rebell® white cross-vane trap (set of 8) is available at Pherobank.

Jackson trap, Jackson accessories and glue boards

Article	Description	Dimensions per trap (assembled)	Weight per trap
30262	Trece Glue board for the Jackson Trap (set of 100)		8.8 grams
30265	Trece Jackson Trap (trap body only)	19 cm x 9 cm x 19 cm (l x w x h)	41 grams
30268	Wire hanger for Trece Jackson Trap		1 gram
30269	Lure clip for Trece Jackson Trap		1 gram
33217	Blue glue board (set of 10)	25 cm x 10 cm (l x w)	22 grams
33218	Yellow glue board (set of 10)	25 cm x 10 cm (l x w)	124 grams
33230	Rebell® white cross-vane trap (set of 8)	18 cm x 10 cm (d x h)	27 grams



30201

30202

30203

30207

Funnel trap for monitoring and mass-trapping of moths and beetles, available in the colours green, yellow and transparent (no colour influence).

Funnel trap (ft)

The funnel trap includes a lid, funnel, and bucket, plus a cage, cap and a tie and -if requested- a barrier cross. The funnel trap is available in several colour combinations. Each assembly component is available in green (gr), yellow (ye), and transparent (tr), except for the bucket, which is not available in yellow. Most customers choose one of the following colour combinations (lid/funnel/bucket): gr/gr/tr, gr/ye/tr, or gr/gr/gr. If the barrier cross is used, the most common colour combination (lid/funnel/bucket/barrier) is gr/gr/tr/gr. Funnel trap include a cage with a cap to hold the pheromone lure and a green tie to be used to suspend the funnel trap.

The click beetle (*Agriotis species*) trap is a standard gr/gr/tr or gr/gr/gr funnel trap that must be buried partially in the ground. To avoid the need to dig up the bucket, this trap can be equipped with a transparent sieve (30217) for conveniently emptying the trap.

This sieve can be used with all of our funnel traps. To prevent accidentally trapping mice, a mouse protection assembly (33209) can be placed in the funnel of the trap.



The click beetle (*Agriotis species*) funnel trap in use.

Funnel trap (includes green tie)

Article	Description	Dimensions per trap (assembled) (d x h)	Weight per trap
30201	green lid / green funnel / transparent bucket	17 cm x 23 cm	232 grams
30202	green lid / green funnel / green bucket	17 cm x 23 cm	232 grams
30203	yellow lid / yellow funnel / transparent bucket	17 cm x 23 cm	232 grams
30204	green lid / yellow funnel / transparent bucket	17 cm x 23 cm	232 grams
30206	yellow lid / green funnel / transparent bucket	17 cm x 23 cm	232 grams
30207	transparent lid / transparent funnel / transparent bucket	17 cm x 23 cm	232 grams
30209	green lid / yellow funnel / green bucket	17 cm x 23 cm	232 grams
30210	green lid / transparent funnel / transparent bucket	17 cm x 23 cm	232 grams

Funnel trap with barrier cross (ftbc)



30251



30253



30255

Funnel trap with barrier cross for monitoring and mass-trapping of large moths and beetles, available in the colours green, yellow and transparent (no colour influence).

Funnel trap barrier cross (includes green tie)

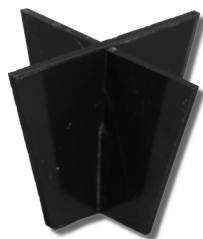
Article	Description	Dimensions per trap (assembled) (d x h)	Weight per trap
30251	green lid / green funnel / transparent bucket / green barrier cross	17 cm x 31 cm	290 grams
30252	green lid / green funnel / green bucket / green barrier cross	17 cm x 31 cm	290 grams
30253	yellow lid / yellow funnel / transparent bucket / yellow barrier cross	17 cm x 31 cm	290 grams
30254	green lid / yellow funnel / transparent bucket / yellow barrier cross	17 cm x 31 cm	290 grams
30255	transparent lid / transparent funnel / transparent bucket / transparent barrier cross	17 cm x 31 cm	290 grams
30256	green lid / green funnel / transparent bucket / yellow barrier cross	17 cm x 31 cm	290 grams
30257	green lid / green funnel / transparent bucket / white barrier cross	17 cm x 31 cm	290 grams
30258	green lid / transparent funnel / transparent bucket / green barrier cross	17 cm x 31 cm	290 grams
30259	green lid / green funnel / green bucket / white barrier cross	17 cm x 31 cm	290 grams
30260	yellow lid / yellow funnel / transparent bucket / green barrier cross	17 cm x 31 cm	290 grams



Funnel trap accessories



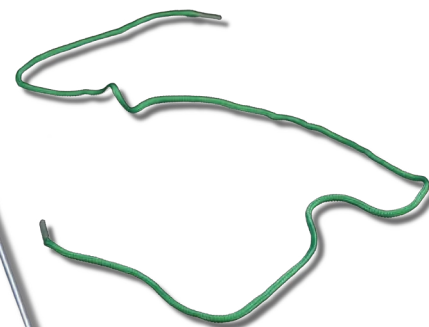
Sieve for funnel trap



Mouse protection for funnel trap



Steel bar for elevated trap placement (galvanized)



Green tie

Funnel trap accessories

Article	Description	Dimensions per accessory	Weight
30217	Sieve for funnel trap	15.5 cm x 11.5 cm (d x h)	75 grams
30219	Green tie	85 cm (l)	1 gram
33209	Mouse protection for funnel trap	5.5 cm x 5.5 cm x 4 cm (l x w x h)	9 grams
33210	Steel bar for elevated trap placement	0.6 cm x 120 cm (d x h)	320 grams
32251	Green barrier cross	17 cm x 8 cm (d x h)	58 grams
32252	Yellow barrier cross	17 cm x 8 cm (d x h)	58 grams
32253	Transparent barrier cross	17 cm x 8 cm (d x h)	58 grams
32254	White barrier cross	17 cm x 8 cm (d x h)	58 grams





Mediterranean fruit fly trap, very well suited for mass-trapping.

An optional galvanized steel bar (33210) is also available to elevate traps in an open area.

Mediterranean fruit fly trap (fft)

This trap is used to trap fruit flies, including *Ceratitis* and *Bactrocera* species. This trap is particularly well-suited for mass trapping programs and has an inverse funnel on the underside as well as three transparent entries.

McPhail trap (McP)

The McPhail trap is an inverse funnel trap that is specifically designed to capture insects that prefer to enter from underneath. Once under the trap, the insect will fly towards the light, where it will then be trapped. Because the insect will not fly back down, it will be unable to escape the trap. This trap is designed to be used with water and detergent as the killing agent; if liquid bait is used, detergent does not need to be added to the trap. The trap should be cleaned regularly to obtain the best results. The included green tie can be used to suspend the McPhail trap. The green cage is included with the McPhail trap.



Drosophila trap, specially designed to trap Drosophila flies

Drosophila trap (dst)

The *Drosophila* trap has been designed especially to trap a number of *Drosophila* flies. The small diameter of the openings prevent that larger insects like bees and larger flies will enter this trap.



McPhail trap (McP)

Various fruit fly traps

Article	Description	Dimensions per trap (assembled) (d x h)	Weight per trap
30218	Drosophila trap	14 cm x 17 cm	91 grams
33202	McPhail trap (includes green tie)	17 cm x 19 cm	216 grams
33212	Mediterranean fruit fly trap	14 cm x 17 cm	150 grams

Water trap (wt)

Pherobank offers a high-capacity water trap that is designed to effectively trap large numbers of insects. This trap is available in several versions, each of which can be adapted to meet your specific needs. The basic trap configuration consists of a water reservoir, a two-part pillar, and a mounting plate. This trap is more efficient by adding detergent to the water.



Water trap standing version with optional sieve and lid.



Water trap basic version.



Water trap hanging version with optional lid.

This basic configuration can be expanded by the addition of the following extensions:

- **sieve**
The sieve allows you to conveniently remove trapped insects without needing to replace the water.
- **protective lid**
This green lid is height-adjustable to customize the trap to your target insects. The lid protects the lure from direct sunlight and harsh outdoor conditions and decreases evaporation.
- **hanger**
The hanger can be used to suspend the water trap and can support a filled water trap weighing up to 4 kg.



Optional sieve for the water trap.

Water trap and accessories

Article	Description	Dimensions per trap (assembled) (d x h)	Weight per trap
30301	Water trap basic version	35 cm x 17 cm	353 grams
30303	Water trap hanging version	40 cm x 50 cm	402 grams
32301	Water trap sieve	33 cm x 6 cm	215 grams
32302	Water trap lid	38 cm x 4 cm	220 grams
32303	Water trap hanger	5 cm x 50 cm	50 grams

Purple prism trap (*Agrilus species*) (ppt)

The emerald ash borer (*Agrilus planipennis*) is a green buprestid or jewel beetle. It is native to north-eastern Asia and feeds on ash (*Fraxinus spp.*). In 2002 it was found in North America and the beetle has quickly spread to at least 15 US States and Canadian Provinces. In about 10 years, it is estimated that the beetle has killed over 30 million forest and ornamental trees, causing significant economic damage as well as serious concern for the survival of several ash species and related biodiversity and ecosystems. In 2007, it was officially reported from the region of Moscow, Russia. From there it could invade the whole of Europe.

Pherobank offers an attractant dispenser and a special *Agrilus spp.* trap, which can be used to monitor and control this pest insect.



Purple prism trap



Rhynchophorus trap.

Rhynchophorus trap (rft)

The Red Palm Weevil (*Rhynchophorus ferrugineus*) originated in the tropical regions of Asia and Polynesia but has spread throughout other subtropical and temperate regions, colonizing various species of palm trees and causing one of the largest infestations in the palms trees of Asia, the Middle East, and North Africa. This weevil is also now a major problem in South Europe, where it is devastating large numbers of palm trees.

Pherobank offers a pheromone dispenser and a special Rhynchophorus trap, which can be used to monitor and control this pest insect. In North Africa, 2-4 traps per hectare have been shown to be sufficient to provide a controlling effect. The minimum area to achieve a controlling effect is 10 hectares.

Article	Description	Dimensions per trap (assembled)(d x h)	Weight per trap
30264	Purple prism trap (sold per pair)	43 cm x 60 cm	517 grams
33210	Rhynchophorus trap	35 cm x 27 cm	480 grams



Agrilus planipennis



Purple prism trap in a tree



Rhynchophorus ferrugineus



Multi funnel trap (12 funnels)



Multi funnel trap (6 funnels)



Wet cup for multi-funnel trap

Dry cup for multi-funnel trap



Cross-vane trap



Multi funnel trap (mft)

The multi funnel trap is designed based of the original Lindgren trap. It is used primarily to catch bark beetles (*Ips spp.*) and longhorn beetles e.g. pine sawyer beetle (*Monochamus galloprovincialis*).

Pherobank offers several versions of multi-funnel trap, i.e. 6 or 12 funnels with a wet or dry cup. Order the funnels and the cups separately.

Cross-vane trap (cvt)

The cross-vane trap is, like the multi-funnel trap, design to trap large wood-boring beetles, wood wasps, and bark and timber beetles. The trap is fitted with a collection cup with both wet and dry capabilities. The cut-out in the cross-vane allows for the placement of dispensers. The cut-out also allows the odour to disperse in all directions.

The cross-vane trap with black panels is now available at Pherobank.

Bark beetle and longhorn beetle traps (*Ips spp.* and e.g. *Monochamus galloprovincialis*)

Article	Description	Dimensions per trap (assembled)(d x h)	Weight per trap
32310	Funnels for multi-funnel trap (6 funnels)	22 cm x 83 cm (incl. cup)	500 grams
32311	Funnels for multi-funnel trap (12 funnels)	22 cm x 146 cm (incl. cup)	938 grams
32312	Dry cup for multi-funnel trap	8 cm x 13 cm	37 grams
32313	Wet (closed) cup for multi-funnel trap	8 cm x 13 cm	37 grams
32302	Cross-vane trap	38 cm x 128 cm	930 grams

Zeuzera trap (zt)

The Zeuzera trap is designed to trap *Zeuzera pyrina*. It can be placed in the canopy of trees. Due to its large open sides the moths can easily fly into the trap. Once above the cone the moth will hit plastic bars which will result in the moth collapsing its wings and falling down into the trap. The corrugated plastic wall is too slippery for the moth to crawl on.



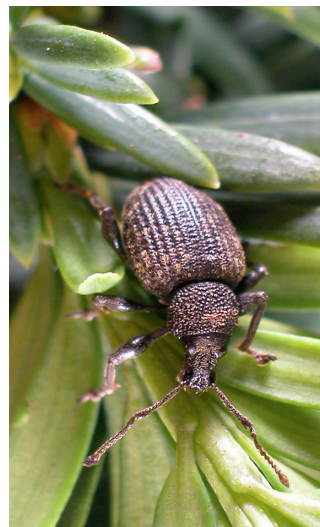
Zeuzera trap



Ruffle trap

Ruffle trap (rt)

Ruffle trap is a flexible refuge trap. The ruffle trap can be wrapped around trees; placed on the soil within ground covers; or with one end attached to a bar to hang vertically. The flexible shape maximises contact with weevils compared to other trap designs. Addition of linseed oil to the trap will increase mortality of the trapped weevils.

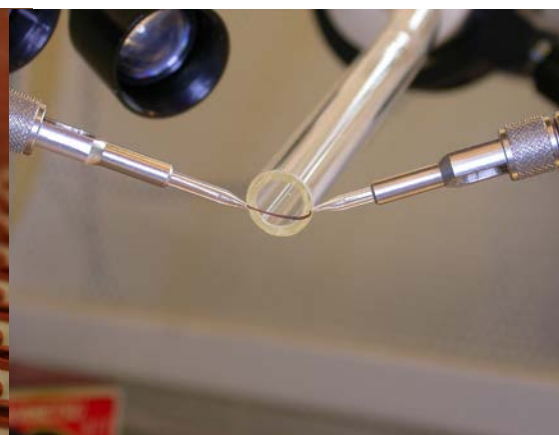
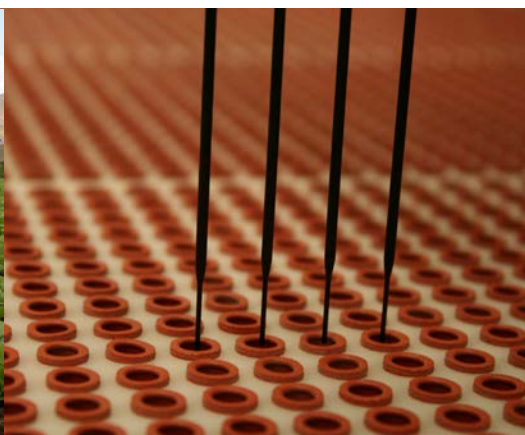


Otiorynchus sulcatus



A ruffle trap applied to Rhododendron

Article	Description	Dimensions per trap (assembled)(d x h)	Weight per trap
30266	Zeuzera trap	39 cm x 112 cm	550 grams
30270	Ruffle trap	4 cm x 45 cm	26 grams



General terms and conditions Pherobank BV

Article 1. Definitions

Pherobank: the private limited company with limited liability Pherobank B.V., with its registered office at Molenvliet 1c, 3961 MT Wijk bij Duurstede, the Netherlands, telephone: +31 (0)6-46262681, fax +31 (0)84-8704440, e-mail:

info@pherobank.com, website: www.pherobank.com, registered with the Dutch Chamber of Commerce [Kamer van Koophandel] under number 54287154.

Client: every person or legal entity to whom Pherobank offers and/or sells products.

Product: pheromone dispensers, Pherobank accessories, reference substances and technical pheromones.

Quotation: an offer to supply products drawn up specifically for a client at the price and under the terms and conditions set out by Pherobank.

Article 2. Scope of application

- 2.1 These general terms and conditions will apply to all quotations, orders and agreements made between Pherobank and a client, in as far as Pherobank has declared them to apply.
- 2.2 These general terms and conditions will also apply to agreements made with Pherobank but implemented by a third party on behalf of Pherobank.
- 2.3 Deviation from these general terms and conditions must be agreed by both parties in writing.
- 2.4 In the event that one or more of the provisions of these general terms and conditions are wholly or partially quashed or declared null and void, the other provisions of these terms and conditions will remain fully in effect. Parties will consult with each other to agree new provisions to replace the quashed or void ones. In doing so, the purpose and meaning of the original provisions will be taken into account as far as possible.
- 2.5 Should there be any confusion about the interpretation of one of more conditions contained in these general terms and conditions, the provision should be interpreted 'in the spirit' of these general terms and conditions.

Article 3. Formation

- 3.1 All quotations given by Pherobank are free from obligation, unless the quotation states a period for acceptance. Where no acceptance period is shown, Pherobank is entitled to change the prices on quotations without prior notice.
- 3.2 Pherobank cannot be made to abide by a quotation if the client can reasonably be expected to understand that it includes a mistake or a clerical error.
- 3.3 An agreement will only be formed once Pherobank has accepted an order from a client in writing. Pherobank has the right to reject an order or require extra conditions to be added to an agreement. Clients will be informed in writing within eight days if an order is rejected.

Article 4. Prices

- 4.1 The prices for the products are shown in euros, exclusive of Dutch VAT [BTW], exclusive of taxes, dispatch costs or any other levies, unless otherwise stated or agreed in writing.
- 4.2 For orders solely comprising pheromone dispensers the actual costs will be charged, with a minimum of EUR 35. No dispatch costs will be charged for these orders from within European Union of above EUR 2,000, excluding VAT and surcharges.
- 4.3 Dispatch costs for orders including, or solely consisting of accessories must be paid for in full by the client.
- 4.4 All other necessary costs paid by Pherobank on behalf of the client, including import and customs costs and duties, will be charged to the client.
- 4.5 For orders with a total value of less than EUR 130, excluding VAT and shipment costs, a surcharge of EUR 20 will be added.

Article 5. Payment

- 5.1 Payments must be made to our Dutch bank account within the payment term as stated on our invoice. Payment in part will not be accepted and will be deemed not to have been made.
- 5.2 A client that exceeds the payment period will be in default by operation of law. The client will be legally obliged to pay interest. Pherobank is entitled to charge a client that defaults on payment for the reasonable costs of securing payment of the invoice.
- 5.3 Objections to the amount stated on the invoice do not suspend the client's obligation to pay.

Article 6. Dispatch and delivery

- 6.1 The delivery times stated in the brochure and on the website are an indication. Exceeding the delivery time does not give the client a right to compensation.
- 6.2 Goods will be dispatched by registered post or by courier.
- 6.3 Orders will be at the client's risk from the moment of delivery.
- 6.4 Clients are responsible for obtaining the licences and documentation (including for customs) needed to dispatch the order.

Article 7. Reservation of title

- 7.1 All products supplied by Pherobank under the terms of the agreement will continue to be property of Pherobank until the client complies fully with all the obligations contained in the agreement made with Pherobank.
- 7.2 Products supplied by Pherobank and subject to reservation of title, may not be sold on and may not be used as an instrument of payment. The client is not authorised to pledge or in any way encumber goods that are subject to reservation of title.

- 7.3 If third parties impound products supplied subject to reservation of title, or intend to establish or claim rights to such products, the client is obliged to inform Pherobank immediately.

Article 8. Intellectual and industrial property

- 8.1 Pherobank reserves the rights and authority accorded on the grounds of the Copyright Act [Auteurswet] and all other laws and regulations covering intellectual property. Pherobank has the right to use knowledge obtained during the course of implementing an agreement for other purposes, as long as no confidential information about or originating from the client is made known to third parties.

Article 9. Guarantee and advertising

- 9.1 Products supplied by Pherobank will comply with the customary standards and requirements that can reasonably be made of them at the time of delivery.
- 9.2 The guarantee specified in paragraph 1 of this Article will apply for a period of 2 months after delivery, unless the nature of the product supplied provides other wise or parties have made other agreements. If the guarantee provided by Pherobank concerns a product produced by a third party, the stipulations given by the producer of the product will apply to the guarantee, unless otherwise stated.
- 9.3 All forms of guarantee will cease to apply if a fault occurs as the result of or ensuing from improper use of the product, use after the expiry date or incorrect storage by the client and/or a third party. Neither will the client be entitled to invoke the guarantee if a fault occurs because of, or as the result of, circumstances on which Pherobank has no influence, including weather conditions et cetera.
- 9.4 The client undertakes to check that the quality and/or quantity of the product supplied complies with the terms stated in the agreement, and that the product satisfies the requirements agreed by both parties in said agreement, as soon as the goods are made available. The client must report any faults or defects to Pherobank in writing within fourteen (14) days of delivery.
- 9.5 If it can be proved that a product does not comply with the terms of the agreement, Pherobank will replace said product on return, and if no replacement is available, will refund the costs shown on the invoice.

Article 10. Liability

- 10.1 In cases where Pherobank is liable, liability will be restricted to the conditions of this provision.
- 10.2 Pherobank is not liable for damage of whatever kind incurred when Pherobank acts on incorrect or incomplete information given by or on behalf of the client.
- 10.3 In cases where Pherobank is liable for damages of any kind, liability will be restricted to a maximum of the amount of the invoice for the products ordered, or at least for that part of the order to which liability applies.
- 10.4 In all cases, Pherobank's liability will be restricted to the amount paid out by the insurer in the case concerned.
- 10.5 Pherobank can only be held liable for direct damages. Direct damages should be taken to mean the reasonable costs of ascertaining the cause and scope of the damage, reasonable costs incurred to hold Pherobank accountable for its defective performance in relation to the agreement in as far as Pherobank can be held responsible, and reasonable costs made to prevent or limit the damage.
- 10.6 Pherobank can never be held liable for indirect damage, including resulting damage, loss of profit, lost savings and loss due to business interruption.

Article 11. Termination

- 11.1 Pherobank is authorised to terminate the agreement between the parties if:
 - a. it is unable to comply with the obligations ensuing from the agreement due to circumstances beyond its control. For the purposes of these terms and conditions, in addition to the stipulations contained in the relevant legislation and legal precedents, circumstances beyond its control includes all external causes, foreseen or unforeseen, on which Pherobank has no influence.
 - b. after having made the agreement, Pherobank is informed of circumstances giving well-founded fear that the client will be unable to comply with the obligations contained in the agreement.
 - c. the client is asked to provide security under the terms of the agreement, but is unable to provide sufficient security.
- 11.2 The client is not authorised to terminate the agreement.
- 11.3 The agreement must be terminated by registered letter or by e-mail.

Article 12. Location and amendment of conditions

- 12.1 These terms can be downloaded from the website (www.pherobank.com) of Pherobank BV.
- 12.2 The version applying at the time of formulating the agreement between Pherobank and the client will apply.
- 12.3 When interpreting these general terms and conditions, the Dutch text will prevail.

Article 13. Applicable law and court with jurisdiction

- 13.1 All agreements and disputes ensuing from these general terms and conditions will be subject to Dutch law.
- 13.2 Disputes between parties may only be heard by the court with jurisdiction at the Arnhem District Court.



More information:
Pherobank BV
www.pherobank.com
info@pherobank.com

Molenvliet 1c
3961MT Wijk bij Duurstede
The Netherlands
Telephone: +31 (0)6-83046132
Fax: +31 (0)84-8704440

Graphic design: Koen van der Horst

Superior quality sex pheromones

- pheromone identification
- custom pheromone synthesis
- pheromone lures
- insect traps