

Port Botany Post Construction Environmental Monitoring

Saltmarsh
Summary Report
April 2016

EL1112046



Prepared for Port Authority of
New South Wales
11 August 2016

Document Information

Prepared for Port Authority of New South Wales
Project Name Saltmarsh Summary Report April 2016
File Reference EL1112046 Port Botany - Saltmarsh Summary Report April 2016.docx
Job Reference EL1112046
Date 29 April 2016

Contact Information

Cardno (NSW/ACT) Pty Ltd
Trading as Cardno Ecology Lab

Level 9, The Forum
203 Pacific Highway
St. Leonards NSW 2065

Telephone: 02 9496 7700
Facsimile: 02 9499 3902
International: +612 9496 7700

theecologylab@cardno.com.au
www.cardno.com.au

Document Control

| Version | Date | Author | Author Initials | Reviewer | Reviewer Initials |
|---------|-----------|----------------|-----------------|--------------------------------|-------------------|
| 1 | 29/4/2016 | Isabel Jimenez | IJ | Kate Reeds | KR |
| 2 | 11.08.16 | Isabel Jimenez | IJ | Belinda Crichton Kate Reeds | BC KR |

© Cardno 2016. Copyright in the whole and every part of this document belongs to Cardno and may not be used, sold, transferred, copied or reproduced in whole or in part in any manner or form or in or on any media to any person other than by agreement with Cardno.

This document is produced by Cardno solely for the benefit and use by the client in accordance with the terms of the engagement. Cardno does not and shall not assume any responsibility or liability whatsoever to any third party arising out of any use or reliance by any third party on the content of this document.

Table of Contents

| | | |
|----------|-------------------------------|-----------|
| 1 | Introduction | 1 |
| 1.1 | Background | 1 |
| 1.2 | Purpose of this report | 1 |
| 2 | Monitoring Methodology | 2 |
| 2.1 | Sampling Design | 2 |
| 2.2 | Field Procedures | 8 |
| 2.3 | Quality Control Procedures | 9 |
| 3 | Monitoring Works | 10 |
| 4 | Preliminary Findings | 11 |
| 5 | References | 12 |

Tables

| | | |
|---------|--|----|
| Table 1 | Indicators and sampling methods for saltmarsh monitoring. | 8 |
| Table 2 | Percentage cover data recorded along the length of each transect and within the quadrats, for saltmarsh species and bare ground. | 11 |

Figures

| | | |
|----------|--|---|
| Figure 1 | Penrhyn Estuary Saltmarsh sites and 2013 vegetation boundary | 3 |
| Figure 2 | Quilbray Bay Reference Sites. | 4 |
| Figure 3 | Woolooware Bay Reference Sites | 5 |
| Figure 4 | Sans Souci Treated Reference Sites | 6 |
| Figure 5 | Salt Pan Creek Treated Reference Sites | 7 |

Appendices

Appendix A Field data

1 Introduction

1.1 Background

As part of the Port Botany Expansion Project, Sydney Ports Corporation (now Ports Authority of NSW) has rehabilitated Penrhyn Estuary, located in Botany Bay adjacent to the port expansion. Penrhyn Estuary is a small waterway of approximately 30 ha located to the west of Brotherson Dock, which was artificially created during the reclamation of the Botany foreshore between 1975 and 1978. Since its creation, it has been utilised by a diverse group of migratory birds. The purpose of the rehabilitation works was to enhance the existing intertidal habitat and to expand the estuary as a long term habitat for migratory shorebirds. This involved the removal of mangroves, weeds and introduced species, the enhancement of existing saltmarsh and the creation of new saltmarsh habitat. An extensive area of fore dune was also levelled to create an intertidal feeding and roosting habitat for key species of migratory shorebird that currently use the estuary and to potentially attract a greater number of shorebirds upon completion.

The design, methodology and ongoing maintenance for the estuary are outlined within the Penrhyn Estuary Habitat Enhancement Plan (PEHEP). The key objectives of the PEHEP are to expand the existing shorebird habitat, to continue to attract migratory shorebirds, to create seagrass habitat and to expand the area of saltmarsh habitat.

The aim of the saltmarsh monitoring program is:

- > To monitor changes in existing saltmarsh habitats that were retained, in terms of the impacts of port construction and operation; and
- > To assess the success of created saltmarsh habitat, including its ecological function.

The saltmarsh monitoring plan aims to provide data to test the prediction that appropriate, ecologically functional saltmarsh habitat has been created and that the habitats are sustainable under the conditions of port operation. The plan is linked to the goal of improving numbers of migratory shorebirds by providing quality saltmarsh habitat used by the shorebirds for roosting and (to a lesser extent) feeding.

1.2 Purpose of this report

This report provides a summary of the data collected for Survey 4 carried out in March 2016 as part of the saltmarsh monitoring program. This report documents the current progress of the monitoring works and identifies any important observations during field work and preliminary inspection of the raw data. A more detailed discussion of results will be provided in the annual report.

2 Monitoring Methodology

Penrhyn Estuary has undergone extensive modification as part of the Port Botany Expansion. Saltmarsh communities within the estuary have undergone various levels of disturbance during the port expansion works: new saltmarsh areas were created by new planting, areas of existing saltmarsh received saltmarsh plants transplanted from other areas within the estuary, areas of existing saltmarsh were left undisturbed and other areas of existing saltmarsh had weeds and mangroves removed.

2.1 Sampling Design

In the Penrhyn Estuary, four saltmarsh treatments were surveyed as part of the post monitoring program (see **Figure 1**):

1. **New Saltmarsh Habitat:** 12 sites with the prefix "N" were located in Penrhyn Estuary; a large rectangular area along the northern estuary boundary (N1-1 to N1-6) and fringing the southern shore, extending along the base of the new arm of the port (N2-9 to N2-13 and N2-21). New saltmarsh was also created fringing the kidney-shaped bird roost and two circular roost areas, however the latter two habitats will not be sampled to minimise disturbance of roosting birds.
2. **Transplanted Saltmarsh Habitat:** three sites with prefix "TR" are located along the northern bank of Springvale Creek (TR-8, TR-17 and TR-18). These areas received saltmarsh that was previously located along the western bank of Floodvale Creek. Transplantation was done prior to removing weed and dune habitats and levelling to create the New Saltmarsh habitats mentioned above.
3. **Retained, Undisturbed Saltmarsh Habitat:** four sites with prefix "R"; located along the eastern bank of Floodvale Creek (R1-7 and R1-14) and south-eastern bank of Springvale Creek (R2-20 and R2-22). These areas were saltmarsh habitats prior to and during the habitat enhancement, and were undisturbed during construction and rehabilitation processes.
4. **Altered Saltmarsh Habitat:** three sites with prefix "A" located fringing the southern shore adjacent to Springvale Creek (A2-15, A2-16 and A2-19). These areas had weeds and mangroves (trees and pneumatophores) removed as part of habitat rehabilitation.

Two reference locations with undisturbed saltmarsh habitats were sampled at Quilbray Bay and Woolooware Bay, located on the southern side of Botany Bay (**Figures 2 and 3**). These sites were surveyed as part of the baseline monitoring. Two treated reference locations with newly planted or replanted saltmarsh habitats were sampled at Scotts Park(Sans Souci) and Salt Pan Creek (Padstow) (**Figures 4 and 5**).



Figure 1 Penrhyn Estuary Saltmarsh sites and 2016 vegetation boundary

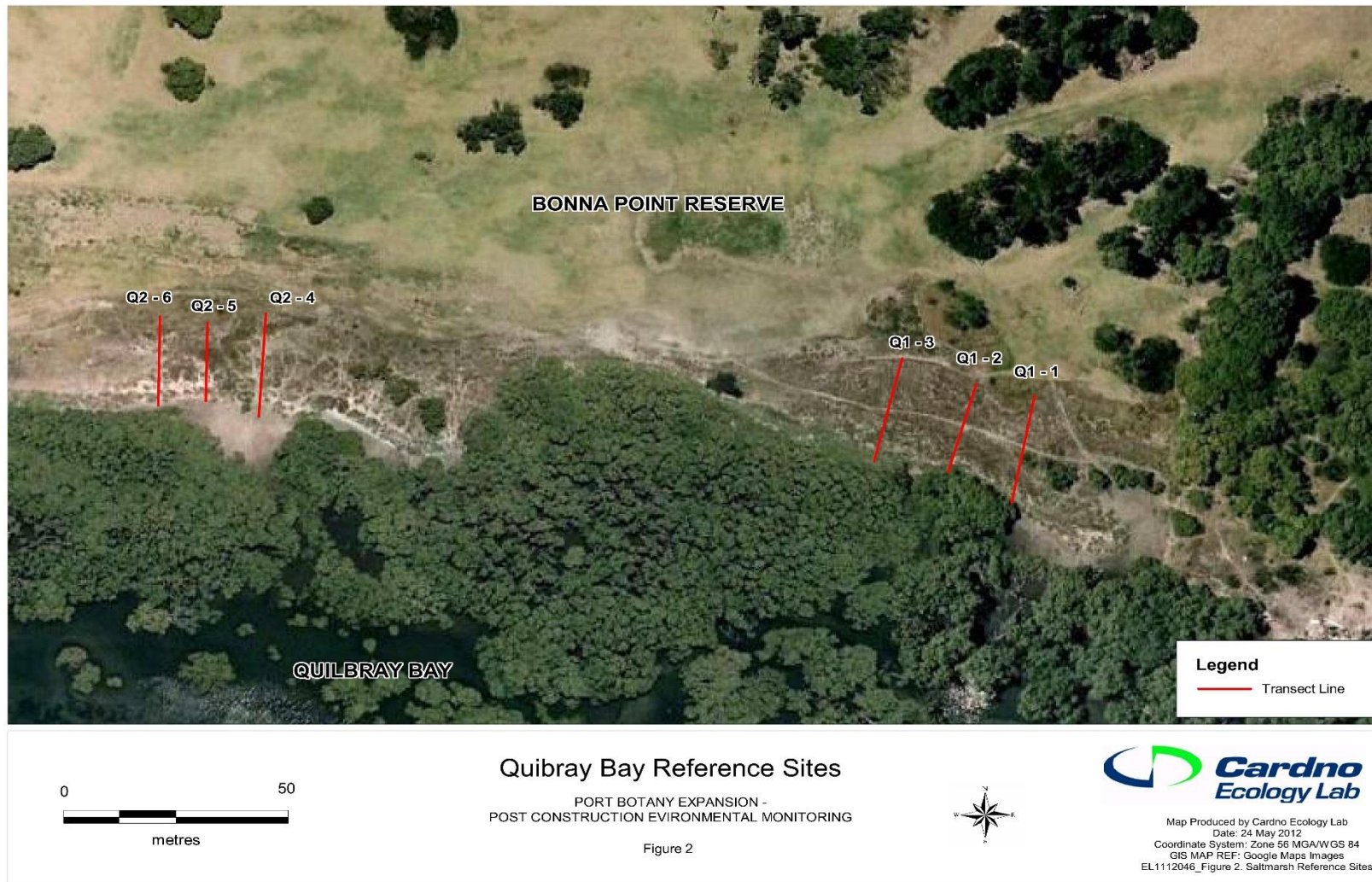


Figure 2 Quilbray Bay Reference Sites



Figure 3 Woolooware Bay Reference Sites



Figure 4 Sans Souci Treated Reference Sites



Figure 5 Salt Pan Creek Treated Reference Sites

2.2 Field Procedures

The sampling methodology was consistent with previous surveys as outlined in the Monitoring Services Management Plan (Cardno, 2013) and summarised in Table 1 below.

The lengths from the shoreline of each transect were different for every site – with the width of saltmarsh habitat determining the length of each transect. Indicators such as percentage cover were standardised to the length of each transect. Four replicate quadrats (1 x 1 m in dimension) were sampled at random points along the length of each transect. Photographs were taken at the landward end of each transect.

Table 1 Indicators and sampling methods for saltmarsh monitoring.

| Indicator | Parameter | Sampling Methodology |
|-------------------------------------|---|---|
| Saltmarsh Distribution | Area | The area of saltmarsh habitats was derived from interpretation of aerial photos. |
| Growth (success of transplantation) | Percentage Cover (%) | The cover of each species of saltmarsh was recorded along a single transect within each site and expressed as a percentage of the total transect length. |
| Species Diversity | Number of Species | The number of species was recorded in quadrats along each transect. |
| Species Abundance | Number of Individuals | The number of individual saltmarsh plants (except grasses) was recorded in quadrats along each transect. |
| Overall Condition | Plant Morphology | The condition of each plant within each 1m ² quadrat was categorised on the following scale: <ul style="list-style-type: none"> • Good condition – >50 % of the plant with living green bases; • Poor condition - < 50 % of the plant with living green bases; and • Dead/near dead – no living green bases on plant. |
| Growth | Height (cm) | The height of the tallest plant was recorded in quadrats along each transect |
| Ecological Function | Epifaunal Invertebrates | The abundance of epifaunal invertebrates associated with saltmarsh habitat (including crabs, gastropod molluscs, etc.) was recorded in quadrats along each transect. Crab holes were used as an index of crab abundance. |
| Encroachment by Mangroves | Number of sprouting mangrove trunks, pneumatophores, and seedlings. | The number of mangrove trunks, pneumatophores, seeds and seedlings was recorded in quadrats along each transect. |

2.3 Quality Control Procedures

Prior to fieldwork, all staff were familiarised with sampling techniques and species identifications. All GPS waypoints and maps were checked against 2014 entries to ensure consistency between surveys. Field data were entered and checked for errors using a two person checklist.

3 Monitoring Works

The fourth post construction monitoring survey of saltmarsh occurred between 16 and 18 March 2016. All sampling of the saltmarsh sites was successfully completed in the Reference Sites (Quibray Bay and Woolooware Bay) on 16 March, in Penrhyn Estuary on 17 March and in the Treated Reference Sites (Sans Souci and Salt Pan Creek) on 18 March.

Weather conditions were overcast on the 16 March, predominantly fine on the 17 March and with showers throughout the day on the 18 March. During the field works no HSE incidents or near misses were recorded for the saltmarsh monitoring works, while no non-compliance reports (NCR) required issuing for corrective actions.

4 Preliminary Findings

The location of field sampling transect sites are shown in Figures 1 – 5. The raw data from the field sampling are shown in Appendix A, with quadrat data presented as means and standard errors for the four random quadrats sampled within each transect.

Habitat mapping based on aerial imagery indicated that saltmarsh habitat in Penrhyn Estuary covered an area of 36,660 m² in 2016. This represents a decrease of approximately 3,717 m² or 9% from the 40,377 m² reported in 2014. Field observations and preliminary investigations indicate that the change in habitat area since 2014 is due in part to an area of approximately 380 m² in the south-eastern corner of the Estuary which was mapped in 2014 but excluded from 2016 mapping results as it comprised extremely sparse, poor condition saltmarsh. In other parts of the Estuary, preliminary findings indicated some new growth and increases in density (at the western end of the Estuary), as well as changes in the seaward boundary of the new saltmarsh habitat in the southern end of the Estuary.

Saltmarsh coverage within Penrhyn Estuary, the two reference and two treated reference locations was dominated by three species of saltmarsh (*Sarcocornia quinqueflora*, *Sporobolus virginicus* and *Suaeda australis*) and bare ground. The mean percentage cover data, recorded along the length of each transect and within the quadrats, for these three species and bare ground, are shown in **Table 2**.

Table 2 Percentage cover data recorded along the length of each transect and within the quadrats, for saltmarsh species and bare ground.

| Plant species or habitat | Percentage cover along length of transect | Percentage cover within quadrats |
|---------------------------------------|---|----------------------------------|
| Bare ground | 26.7 | 37.8 |
| <i>Sarcocornia quinqueflora</i> | 37.0 | 30.1 |
| <i>Sporobolus virginicus</i> | 17.8 | 18.2 |
| <i>Suaeda australis</i> | 10.4 | 7.9 |
| Total cover for above species/habitat | 91.9 | 94.0 |

The most common epifauna invertebrate species were gastropods (*Ophicardelus ornatus* and *Littorina scabra*) and crab holes. These two species and crab holes combined made up 94.3% of the recorded invertebrate taxa.

Sarcocornia quinqueflora was the dominant species of saltmarsh recorded throughout the study area. It was recorded in good condition throughout, with the exception of New Saltmarsh site N1-3, Retained Saltmarsh site R2-22 and Reference site W2-6 at Woollooware Bay, where some poor condition *S. quinqueflora* was recorded (1.0 ± 1.0 %, 3.75 ± 3.75 % and 2.5 ± 2.5 % cover, respectively).

No mangrove seedlings were recorded within the transects / quadrats at any of the treatment locations within Penrhyn Estuary.

5 References

Cardno (2013). *Port Botany Expansion Environmental Enhancement Works – Post Construction Environmental Monitoring. Monitoring Services Management Plan*. EL1112046 Prepared for Sydney Ports Corporation . November 2013.

Cardno (2014). *Port Botany Post Construction Environmental Monitoring – Saltmarsh Summary Report March 2014. Monitoring Services Management Plan*. Prepared for Sydney Ports Corporation. March 2014.

Saltmarsh Summary
Report April 2016

APPENDIX A
FIELD DATA

Appendix A: Field Data

A-1: Percent cover of each species of saltmarsh recorded along the length of transects at each site

A-2: Mean percent cover for saltmarsh species recorded within four quadrats along each transect

A-3: Mean abundance of saltmarsh, mangrove and epifaunal invertebrate species recorded within four random quadrats along transects at each site

A-4: Mean height of the tallest plant species recorded within four random quadrats along transects at each site.

Table A-1: Percent cover of each species of saltmarsh recorded along the length of transects at each site.

| Species Name | Common Name | Treatment | New Saltmarsh 1 | | | | | | New Saltmarsh 2 | | | | | |
|--|-----------------------|---------------------|-----------------|------|------|------|------|------|-----------------|-------|-------|-------|-------|-------|
| | | Transect Length (m) | N1-1 | N1-2 | N1-3 | N1-4 | N1-5 | N1-6 | N2-9 | N2-10 | N2-11 | N2-12 | N2-13 | N2-21 |
| | | 49.2 | 36.2 | 46.2 | 40.3 | 36.7 | 19.9 | 23.4 | 28.2 | 33.5 | 35.7 | 11 | 39.9 | |
| Bare | Bare ground | 20.7 | 11.6 | 40.5 | 42.9 | 22.3 | 39.7 | 18.4 | 16.0 | 13.4 | 56.6 | 2.7 | 3.3 | |
| <i>Aegiceras corniculatum</i> | River Mangrove | 0.0 | 0.0 | 0.0 | 0.0 | 0.0 | 0.0 | 0.0 | 0.0 | 0.0 | 0.0 | 0.0 | 0.0 | |
| <i>Atriplex australasica</i> | Green Saltbush | 0.0 | 0.0 | 0.0 | 0.0 | 0.0 | 0.0 | 0.0 | 0.0 | 0.0 | 0.0 | 0.0 | 0.0 | |
| <i>Avicennia marina</i> | Grey Mangrove | 0.0 | 0.0 | 0.0 | 0.0 | 0.0 | 0.0 | 0.0 | 0.0 | 0.0 | 0.0 | 0.0 | 0.0 | |
| <i>Carpobrotus sp.</i> | Pigface | 2.2 | 4.4 | 0.0 | 0.0 | 0.0 | 0.0 | 0.0 | 0.0 | 0.0 | 0.0 | 0.0 | 0.0 | |
| <i>Carpobrotus sp. (Dead)</i> | Dead Pigface | 0.6 | 0.0 | 0.0 | 0.0 | 0.0 | 0.0 | 0.0 | 0.0 | 0.0 | 0.0 | 0.0 | 0.0 | |
| <i>Hydrocotyle sp.</i> | Pennywort | 0.0 | 0.0 | 0.0 | 0.0 | 0.0 | 0.0 | 0.0 | 0.0 | 0.0 | 0.0 | 0.0 | 0.0 | |
| <i>Isolepis nodosa</i> | Knobby Club-rush | 0.0 | 0.0 | 0.0 | 0.0 | 0.0 | 0.0 | 0.0 | 0.0 | 3.6 | 0.0 | 0.0 | 0.0 | |
| <i>Juncus kraussii</i> | Sea Rush | 0.0 | 0.0 | 0.9 | 0.0 | 0.0 | 0.0 | 0.0 | 0.0 | 9.3 | 0.0 | 0.0 | 0.0 | |
| <i>Samolus repens</i> | Creeping Brookweed | 0.0 | 0.0 | 0.0 | 0.0 | 0.0 | 0.0 | 0.0 | 0.0 | 0.0 | 0.0 | 0.0 | 0.0 | |
| <i>Sarcocornia quinqueflora</i> | Beaded Glasswort | 49.5 | 47.1 | 35.5 | 40.0 | 57.1 | 27.4 | 81.6 | 75.7 | 47.2 | 27.7 | 65.5 | 42.7 | |
| <i>Sarcocornia quinqueflora (Dead)</i> | Dead Beaded Glasswort | 0.0 | 0.0 | 0.0 | 0.0 | 0.0 | 0.0 | 0.0 | 0.0 | 0.0 | 0.0 | 0.0 | 0.0 | |
| <i>Spinifex sericeus</i> | Hairy Spinifex grass | 8.5 | 0.0 | 0.0 | 0.0 | 0.0 | 1.0 | 0.0 | 0.0 | 0.0 | 0.0 | 0.0 | 0.0 | |
| <i>Sporobolus virginicus</i> | Salt Couch | 18.4 | 36.9 | 23.2 | 16.9 | 20.6 | 31.9 | 0.0 | 8.3 | 26.6 | 15.7 | 31.8 | 53.3 | |
| <i>Sporobolus virginicus (Dead)</i> | Dead Salt Couch | 0.0 | 0.0 | 0.0 | 0.0 | 0.0 | 0.0 | 0.0 | 0.0 | 0.0 | 0.0 | 0.0 | 0.0 | |
| <i>Suaeda australis</i> | Seablite | 0.0 | 0.0 | 0.0 | 0.2 | 0.0 | 0.0 | 0.0 | 0.0 | 0.0 | 0.0 | 0.0 | 0.8 | |
| <i>Suaeda australis (Dead)</i> | Dead Seablite | 0.0 | 0.0 | 0.0 | 0.0 | 0.0 | 0.0 | 0.0 | 0.0 | 0.0 | 0.0 | 0.0 | 0.0 | |
| <i>Tetragonia tetragonioides</i> | New Zealand Spinach | 0.0 | 0.0 | 0.0 | 0.0 | 0.0 | 0.0 | 0.0 | 0.0 | 0.0 | 0.0 | 0.0 | 0.0 | |
| <i>Triglochin striata</i> | Streaked Arrowgrass | 0.0 | 0.0 | 0.0 | 0.0 | 0.0 | 0.0 | 0.0 | 0.0 | 0.0 | 0.0 | 0.0 | 0.0 | |
| <i>Unidentified grass</i> | Unidentified grass | 0.0 | 0.0 | 0.0 | 0.0 | 0.0 | 0.0 | 0.0 | 0.0 | 0.0 | 0.0 | 0.0 | 0.0 | |

continued...

Table A-1: continued

| Species Name | Common Name | Treatment | Transplanted Saltmarsh | | | Retained Saltmarsh 1 | | Retained Saltmarsh 2 | | Altered Saltmarsh 2 | | |
|--|-----------------------|---------------------|------------------------|-------|-------|----------------------|-------|----------------------|-------|---------------------|-------|-------|
| | | Transect | TR-8 | TR-17 | TR-18 | R1-7 | R1-14 | R2-20 | R2-22 | A2-15 | A2-16 | A2-19 |
| | | Transect Length (m) | 34.4 | 12.1 | 17.4 | 8.2 | 4.8 | 32.9 | 25 | 38.7 | 3.3 | 6.4 |
| Bare | Bare ground | | 15.7 | 49.6 | 17.2 | 40.2 | 79.2 | 18.5 | 10.8 | 61.0 | 60.6 | 14.1 |
| <i>Aegiceras corniculatum</i> | River Mangrove | | 0.0 | 0.0 | 0.0 | 0.0 | 0.0 | 0.0 | 0.0 | 0.0 | 0.0 | 0.0 |
| <i>Atriplex australasica</i> | Green Saltbush | | 0.0 | 0.0 | 0.0 | 0.0 | 0.0 | 0.0 | 0.0 | 0.0 | 0.0 | 0.0 |
| <i>Avicennia marina</i> | Grey Mangrove | | 0.0 | 0.0 | 0.0 | 0.0 | 0.0 | 0.0 | 0.0 | 0.0 | 0.0 | 0.0 |
| <i>Carpobrotus sp.</i> | Pigface | | 0.0 | 0.0 | 0.6 | 0.0 | 0.0 | 0.0 | 0.0 | 0.0 | 0.0 | 0.0 |
| <i>Carpobrotus sp. (Dead)</i> | Dead Pigface | | 0.0 | 0.0 | 0.0 | 0.0 | 0.0 | 0.0 | 0.0 | 0.0 | 0.0 | 0.0 |
| <i>Hydrocotyle sp.</i> | Pennywort | | 0.0 | 0.0 | 0.0 | 0.0 | 0.0 | 0.0 | 0.0 | 0.0 | 0.0 | 0.0 |
| <i>Isolepis nodosa</i> | Knobby Club-rush | | 0.0 | 0.0 | 0.0 | 0.0 | 0.0 | 0.0 | 0.0 | 0.0 | 0.0 | 0.0 |
| <i>Juncus kraussii</i> | Sea Rush | | 39.1 | 0.0 | 0.0 | 0.0 | 0.0 | 8.5 | 6.8 | 0.0 | 0.0 | 0.0 |
| <i>Samolus repens</i> | Creeping Brookweed | | 0.0 | 0.0 | 0.0 | 0.0 | 0.0 | 0.0 | 0.0 | 0.0 | 0.0 | 0.0 |
| <i>Sarcocornia quinqueflora</i> | Beaded Glasswort | | 0.0 | 0.0 | 1.7 | 37.8 | 16.7 | 20.2 | 26.0 | 0.8 | 0.0 | 0.0 |
| <i>Sarcocornia quinqueflora (Dead)</i> | Dead Beaded Glasswort | | 0.0 | 0.0 | 0.0 | 0.0 | 0.0 | 0.0 | 0.0 | 0.0 | 0.0 | 0.0 |
| <i>Spinifex sericeus</i> | Hairy Spinifex grass | | 0.0 | 0.0 | 0.0 | 1.2 | 0.0 | 0.0 | 0.0 | 0.0 | 0.0 | 0.0 |
| <i>Sporobolus virginicus</i> | Salt Couch | | 33.4 | 32.2 | 69.5 | 0.0 | 4.2 | 16.6 | 28.8 | 8.8 | 0.0 | 70.3 |
| <i>Sporobolus virginicus (Dead)</i> | Dead Salt Couch | | 0.0 | 0.0 | 0.0 | 0.0 | 0.0 | 0.0 | 0.0 | 0.0 | 0.0 | 0.0 |
| <i>Suaeda australis</i> | Seablite | | 11.8 | 18.2 | 0.0 | 20.7 | 0.0 | 34.2 | 27.6 | 29.5 | 0.0 | 15.6 |
| <i>Suaeda australis (Dead)</i> | Dead Seablite | | 0.0 | 0.0 | 0.0 | 0.0 | 0.0 | 0.0 | 0.0 | 0.0 | 0.0 | 0.0 |
| <i>Tetragonia tetragonioides</i> | New Zealand Spinach | | 0.0 | 0.0 | 0.0 | 0.0 | 0.0 | 2.0 | 0.0 | 0.0 | 0.0 | 0.0 |
| <i>Triglochin striata</i> | Streaked Arrowgrass | | 0.0 | 0.0 | 0.0 | 0.0 | 0.0 | 0.0 | 0.0 | 0.0 | 0.0 | 0.0 |
| <i>Unidentified grass</i> | Unidentified grass | | 0.0 | 0.0 | 10.9 | 0.0 | 0.0 | 0.0 | 0.0 | 0.0 | 39.4 | 0.0 |

continued...

Table A-1: continued

| Species Name | Common Name | Treatment Transect Length (m) | Reference Quibray Bay 1 | | | Reference Quibray Bay 2 | | | Reference Woolooware Bay 1 | | | Reference Woolooware Bay 2 | | |
|--|--------------------------|--|-------------------------|------|------|-------------------------|------|------|----------------------------|------|------|----------------------------|------|------|
| | | | Q1-1 | Q1-2 | Q1-3 | Q2-4 | Q2-5 | Q2-6 | W1-1 | W1-2 | W1-3 | W2-4 | W2-5 | W2-6 |
| Bare | Bare ground | | 18.0 | 14.0 | 12.4 | 24.7 | 29.1 | 15.9 | 16.5 | 10.5 | 7.0 | 11.5 | 30.7 | 18.4 |
| <i>Aegiceras corniculatum</i> | River Mangrove | | 0.0 | 0.0 | 0.0 | 0.0 | 0.0 | 0.0 | 0.0 | 0.0 | 0.0 | 0.0 | 0.0 | 0.0 |
| <i>Atriplex australasica</i> | Green Saltbush | | 0.0 | 0.0 | 0.0 | 0.0 | 0.0 | 0.0 | 0.0 | 0.0 | 0.0 | 0.0 | 0.0 | 0.0 |
| <i>Avicennia marina</i> | Grey Mangrove | | 0.0 | 0.0 | 0.0 | 0.0 | 0.0 | 12.7 | 0.0 | 0.0 | 0.0 | 0.0 | 1.5 | 0.0 |
| <i>Carpobrotus sp.</i> | Pigface | | 0.0 | 0.0 | 0.0 | 0.0 | 0.0 | 0.0 | 0.0 | 0.0 | 0.0 | 0.0 | 0.0 | 0.0 |
| <i>Carpobrotus sp. (Dead)</i> | Dead pigface | | 0.0 | 0.0 | 0.0 | 0.0 | 0.0 | 0.0 | 0.0 | 0.0 | 0.0 | 0.0 | 0.0 | 0.0 |
| <i>Hydrocotyle sp.</i> | Pennywort | | 5.3 | 11.9 | 0.0 | 0.0 | 0.0 | 0.0 | 0.0 | 0.0 | 0.0 | 0.0 | 0.0 | 0.0 |
| <i>Isolepis nodosa</i> | Knobby Club-rush | | 0.0 | 0.0 | 0.0 | 0.0 | 0.0 | 0.0 | 0.0 | 0.0 | 0.0 | 0.0 | 0.0 | 0.0 |
| <i>Juncus kraussii</i> | Sea Rush | | 0.0 | 0.0 | 0.0 | 0.0 | 0.0 | 0.0 | 1.2 | 0.9 | 0.0 | 0.0 | 0.0 | 0.0 |
| <i>Samolus repens</i> | Creeping Brookweed | | 0.0 | 0.0 | 0.0 | 0.0 | 0.0 | 0.0 | 0.0 | 0.0 | 0.0 | 0.0 | 0.0 | 0.0 |
| <i>Sarcocornia quinqueflora</i> | Beaded Glasswort | | 28.3 | 46.6 | 60.2 | 29.7 | 45.5 | 20.7 | 24.2 | 61.7 | 56.1 | 52.9 | 40.2 | 57.8 |
| <i>Sarcocornia quinqueflora (Dead)</i> | Dead Beaded Glasswort | | 0.0 | 0.0 | 0.0 | 0.0 | 0.0 | 0.0 | 12.3 | 0.0 | 0.0 | 0.0 | 0.0 | 0.8 |
| <i>Spinifex sericeus</i> | Hairy Spinifex grass | | 0.0 | 0.0 | 0.0 | 0.0 | 0.0 | 0.0 | 0.0 | 0.0 | 0.0 | 0.0 | 0.0 | 0.0 |
| <i>Sporobolus virginicus</i> | Salt Couch | | 31.8 | 19.6 | 16.0 | 31.1 | 18.6 | 38.0 | 20.7 | 1.3 | 8.6 | 6.5 | 0.0 | 4.1 |
| <i>Sporobolus virginicus (Dead)</i> | Dead Salt Couch | | 0.0 | 0.0 | 0.0 | 0.0 | 0.0 | 0.0 | 0.0 | 0.0 | 2.5 | 0.0 | 0.0 | 0.0 |
| <i>Suaeda australis</i> | Seablite | | 16.8 | 7.9 | 11.3 | 12.6 | 3.2 | 12.7 | 22.7 | 25.2 | 23.3 | 14.9 | 26.1 | 18.9 |
| <i>Suaeda australis (Dead)</i> | Dead Seablite | | 0.0 | 0.0 | 0.0 | 0.0 | 0.0 | 0.0 | 0.0 | 0.3 | 2.5 | 14.1 | 1.5 | 0.0 |
| <i>Tetragonia tetragonioides</i> | New Zealand Spinach | | 0.0 | 0.0 | 0.0 | 0.0 | 0.0 | 0.0 | 1.2 | 0.0 | 0.0 | 0.0 | 0.0 | 0.0 |
| <i>Triglochin striata</i> | Streaked Arrowgrass | | 0.0 | 0.0 | 0.0 | 1.8 | 0.0 | 0.0 | 0.0 | 0.0 | 0.0 | 0.0 | 0.0 | 0.0 |
| <i>Unidentified grass</i> | Unidentified grass | | 0.0 | 0.0 | 0.0 | 0.0 | 3.6 | 0.0 | 1.2 | 0.0 | 0.0 | 0.0 | 0.0 | 0.0 |

continued...

Table A-1: continued

| Species Name | Common Name | Treatment | Treated Reference Sans Souci | | | Treated Reference Salt Pan Creek | | |
|--|-----------------------|------------------------------------|------------------------------|-------|-------|----------------------------------|--------|--------|
| | | Transect Transect Length (m) | SS1-1 | SS1-2 | SS1-3 | SPC1-1 | SPC1-2 | SPC1-3 |
| | | | 25.2 | 22.1 | 20 | 30 | 13.4 | 24 |
| Bare | Bare ground | | 48.8 | 56.1 | 53.5 | 100.0 | 5.2 | 17.9 |
| <i>Aegiceras corniculatum</i> | River Mangrove | | 0.0 | 0.0 | 0.0 | 0.0 | 3.0 | 0.0 |
| <i>Atriplex australasica</i> | Green Saltbush | | 0.0 | 0.0 | 0.0 | 0.0 | 26.7 | 31.3 |
| <i>Avicennia marina</i> | Grey Mangrove | | 0.0 | 0.0 | 0.0 | 0.0 | 0.0 | 0.4 |
| <i>Carpobrotus sp.</i> | Pigface | | 0.0 | 0.0 | 0.0 | 0.0 | 0.0 | 0.0 |
| <i>Carpobrotus sp. (Dead)</i> | Dead pigface | | 0.0 | 0.0 | 0.0 | 0.0 | 0.0 | 0.0 |
| <i>Hydrocotyle sp.</i> | Pennywort | | 0.0 | 0.0 | 0.0 | 0.0 | 0.0 | 0.0 |
| <i>Isolepis nodosa</i> | Knobby Club-rush | | 0.0 | 0.0 | 0.0 | 0.0 | 0.0 | 0.0 |
| <i>Juncus kraussii</i> | Sea Rush | | 19.8 | 4.5 | 12.5 | 0.0 | 3.2 | 0.0 |
| <i>Samolus repens</i> | Creeping Brookweed | | 0.0 | 0.0 | 0.0 | 0.0 | 0.0 | 48.8 |
| <i>Sarcocornia quinqueflora</i> | Beaded Glasswort | | 31.3 | 39.4 | 34.0 | 0.0 | 0.0 | 0.0 |
| <i>Sarcocornia quinqueflora (Dead)</i> | Dead Beaded Glasswort | | 0.0 | 0.0 | 0.0 | 0.0 | 0.0 | 0.0 |
| <i>Spinifex sericeus</i> | Hairy Spinifex grass | | 0.0 | 0.0 | 0.0 | 0.0 | 0.0 | 0.0 |
| <i>Sporobolus virginicus</i> | Salt Couch | | 0.0 | 0.0 | 0.0 | 0.0 | 0.0 | 0.0 |
| <i>Sporobolus virginicus (Dead)</i> | Dead Salt Couch | | 0.0 | 0.0 | 0.0 | 0.0 | 0.0 | 0.0 |
| <i>Suaeda australis</i> | Seablite | | 0.0 | 0.0 | 0.0 | 0.0 | 61.8 | 1.7 |
| <i>Suaeda australis (Dead)</i> | Dead Seablite | | 0.0 | 0.0 | 0.0 | 0.0 | 0.0 | 0.0 |
| <i>Tetragonia tetragonioides</i> | New Zealand Spinach | | 0.0 | 0.0 | 0.0 | 0.0 | 0.0 | 0.0 |
| <i>Triglochin striata</i> | Streaked Arrowgrass | | 0.0 | 0.0 | 0.0 | 0.0 | 0.0 | 0.0 |
| <i>Unidentified grass</i> | Unidentified grass | | 0.0 | 0.0 | 0.0 | 0.0 | 0.0 | 0.0 |

Table A-2: Mean percent cover for saltmarsh species recorded within four random quadrats along each transect.

| Species Name | Treatment Transect Common Name | New Saltmarsh 1 | | | | | | | | | | | |
|--|--------------------------------------|-----------------|------|------|------|------|------|------|------|------|------|------|------|
| | | N1-1 | | N1-2 | | N1-3 | | N1-4 | | N1-5 | | N1-6 | |
| | | MEAN | SE | MEAN | SE | MEAN | SE | MEAN | SE | MEAN | SE | MEAN | SE |
| Bare | Bare ground | 35.0 | 11.9 | 23.8 | 9.7 | 51.8 | 18.6 | 38.5 | 11.2 | 27.3 | 10.6 | 51.3 | 18.5 |
| <i>Acacia sp.</i> | Unidentified Wattle | 0.0 | 0.0 | 0.0 | 0.0 | 0.0 | 0.0 | 0.0 | 0.0 | 0.0 | 0.0 | 0.0 | 0.0 |
| <i>Aegiceras corniculatum</i> | River Mangrove | 0.0 | 0.0 | 0.0 | 0.0 | 0.0 | 0.0 | 0.0 | 0.0 | 0.0 | 0.0 | 0.0 | 0.0 |
| <i>Atriplex australasica</i> | Green Saltbush | 0.0 | 0.0 | 0.0 | 0.0 | 0.0 | 0.0 | 0.0 | 0.0 | 0.0 | 0.0 | 0.0 | 0.0 |
| <i>Avicennia marina</i> | Grey Mangrove tree | 0.0 | 0.0 | 0.0 | 0.0 | 0.0 | 0.0 | 0.0 | 0.0 | 0.0 | 0.0 | 0.0 | 0.0 |
| <i>Avicennia marina</i> | Grey Mangrove seedling | 0.0 | 0.0 | 0.0 | 0.0 | 0.0 | 0.0 | 0.0 | 0.0 | 0.0 | 0.0 | 0.0 | 0.0 |
| <i>Avicennia marina</i> | Grey Mangrove pneumatophores | 0.0 | 0.0 | 0.0 | 0.0 | 0.0 | 0.0 | 0.0 | 0.0 | 0.0 | 0.0 | 0.0 | 0.0 |
| <i>Bidens pilosa</i> | Farmers Friend | 0.0 | 0.0 | 0.0 | 0.0 | 0.0 | 0.0 | 0.0 | 0.0 | 0.0 | 0.0 | 0.0 | 0.0 |
| <i>Carpobrotus sp.</i> | Pigface | 0.0 | 0.0 | 18.8 | 18.8 | 1.0 | 1.0 | 0.0 | 0.0 | 0.0 | 0.0 | 0.0 | 0.0 |
| <i>Cynodon dactylon</i> | Common Couch | 0.0 | 0.0 | 0.0 | 0.0 | 0.0 | 0.0 | 0.0 | 0.0 | 0.0 | 0.0 | 0.0 | 0.0 |
| <i>Hydrocotyle sp.</i> | Pennywort | 0.0 | 0.0 | 0.0 | 0.0 | 0.0 | 0.0 | 0.0 | 0.0 | 0.0 | 0.0 | 0.0 | 0.0 |
| <i>Isolepis nodosa</i> | Knobby Club-rush | 0.0 | 0.0 | 1.3 | 1.3 | 0.0 | 0.0 | 0.0 | 0.0 | 0.0 | 0.0 | 0.0 | 0.0 |
| <i>Juncus kraussii</i> | Sea Rush | 0.0 | 0.0 | 0.0 | 0.0 | 2.5 | 2.5 | 0.0 | 0.0 | 0.0 | 0.0 | 0.0 | 0.0 |
| <i>Plantago coronopus</i> | Plantain | 0.0 | 0.0 | 0.0 | 0.0 | 0.0 | 0.0 | 0.0 | 0.0 | 0.0 | 0.0 | 0.0 | 0.0 |
| <i>Samolus repens</i> | Creeping Brookweed | 0.0 | 0.0 | 0.0 | 0.0 | 0.0 | 0.0 | 0.0 | 0.0 | 0.0 | 0.0 | 0.0 | 0.0 |
| <i>Sarcocornia quinqueflora</i> | Beaded Glasswort | 28.0 | 15.7 | 30.0 | 17.4 | 15.0 | 11.9 | 43.3 | 17.0 | 50.0 | 19.3 | 28.8 | 13.9 |
| <i>Sarcocornia quinqueflora (Dead)</i> | Dead Beaded Glasswort | 0.0 | 0.0 | 0.0 | 0.0 | 0.0 | 0.0 | 0.0 | 0.0 | 0.0 | 0.0 | 0.0 | 0.0 |
| <i>Sarcocornia quinqueflora (Poor)</i> | Poor Condition Beaded Glasswort | 0.0 | 0.0 | 0.0 | 0.0 | 1.0 | 1.0 | 0.0 | 0.0 | 0.0 | 0.0 | 0.0 | 0.0 |
| <i>Spinifex sericeus</i> | Hairy Spinifex Grass | 12.5 | 12.5 | 0.0 | 0.0 | 0.0 | 0.0 | 0.0 | 0.0 | 0.0 | 0.0 | 0.0 | 0.0 |
| <i>Spinifex sericeus (Dead)</i> | Dead Hairy Spinifex grass | 0.0 | 0.0 | 0.0 | 0.0 | 0.0 | 0.0 | 0.0 | 0.0 | 0.0 | 0.0 | 0.0 | 0.0 |
| <i>Sporobolus virginicus</i> | Salt Couch | 24.5 | 24.5 | 26.3 | 23.0 | 28.8 | 20.0 | 17.5 | 17.5 | 22.5 | 19.3 | 20.0 | 20.0 |
| <i>Sporobolus virginicus (Dead)</i> | Dead Salt Couch | 0.0 | 0.0 | 0.0 | 0.0 | 0.0 | 0.0 | 0.0 | 0.0 | 0.0 | 0.0 | 0.0 | 0.0 |
| <i>Sporobolus virginicus (Poor)</i> | Poor Condition Salt Couch | 0.0 | 0.0 | 0.0 | 0.0 | 0.0 | 0.0 | 0.0 | 0.0 | 0.0 | 0.0 | 0.0 | 0.0 |
| <i>Stenotaphrum secundatum</i> | Buffalo Grass | 0.0 | 0.0 | 0.0 | 0.0 | 0.0 | 0.0 | 0.0 | 0.0 | 0.0 | 0.0 | 0.0 | 0.0 |
| <i>Suaeda australis</i> | Seablite | 0.0 | 0.0 | 0.0 | 0.0 | 0.0 | 0.0 | 0.8 | 0.5 | 0.3 | 0.3 | 0.0 | 0.0 |
| <i>Suaeda australis (Dead)</i> | Dead Seablite | 0.0 | 0.0 | 0.0 | 0.0 | 0.0 | 0.0 | 0.0 | 0.0 | 0.0 | 0.0 | 0.0 | 0.0 |
| <i>Tetragonia tetragonioides</i> | New Zealand Spinach | 0.0 | 0.0 | 0.0 | 0.0 | 0.0 | 0.0 | 0.0 | 0.0 | 0.0 | 0.0 | 0.0 | 0.0 |
| unidentified green moss | unidentified green moss | 0.0 | 0.0 | 0.0 | 0.0 | 0.0 | 0.0 | 0.0 | 0.0 | 0.0 | 0.0 | 0.0 | 0.0 |
| unidentified rush | unidentified rush | 0.0 | 0.0 | 0.0 | 0.0 | 0.0 | 0.0 | 0.0 | 0.0 | 0.0 | 0.0 | 0.0 | 0.0 |
| unidentified rush (Dead) | Dead unidentified rush | 0.0 | 0.0 | 0.0 | 0.0 | 0.0 | 0.0 | 0.0 | 0.0 | 0.0 | 0.0 | 0.0 | 0.0 |
| unidentified herb | unidentified herb | 0.0 | 0.0 | 0.0 | 0.0 | 0.0 | 0.0 | 0.0 | 0.0 | 0.0 | 0.0 | 0.0 | 0.0 |
| unidentified plant | unidentified plant | 0.0 | 0.0 | 0.0 | 0.0 | 0.0 | 0.0 | 0.0 | 0.0 | 0.0 | 0.0 | 0.0 | 0.0 |

continued...

Table A-2: continued

| Species Name | Treatment Transect Common Name | New Saltmarsh 2 | | | | | | | | | | | |
|--|--------------------------------------|-----------------|------|-------|------|-------|------|-------|------|-------|------|-------|------|
| | | N2-9 | | N2-10 | | N2-11 | | N2-12 | | N2-13 | | N2-21 | |
| | | MEAN | SE | MEAN | SE | MEAN | SE | MEAN | SE | MEAN | SE | MEAN | SE |
| Bare | Bare ground | 34.3 | 20.5 | 29.5 | 16.3 | 32.8 | 12.8 | 56.3 | 18.9 | 8.8 | 4.3 | 25.0 | 9.6 |
| <i>Acacia sp.</i> | Unidentified Wattle | 0.0 | 0.0 | 0.0 | 0.0 | 0.0 | 0.0 | 0.0 | 0.0 | 0.0 | 0.0 | 0.0 | 0.0 |
| <i>Aegiceras corniculatum</i> | River Mangrove | 0.0 | 0.0 | 0.0 | 0.0 | 0.0 | 0.0 | 0.0 | 0.0 | 0.0 | 0.0 | 0.0 | 0.0 |
| <i>Atriplex australasica</i> | Green Saltbush | 0.0 | 0.0 | 0.0 | 0.0 | 0.0 | 0.0 | 0.0 | 0.0 | 0.0 | 0.0 | 0.0 | 0.0 |
| <i>Avicennia marina</i> | Grey Mangrove tree | 0.0 | 0.0 | 0.0 | 0.0 | 0.0 | 0.0 | 0.0 | 0.0 | 0.0 | 0.0 | 0.0 | 0.0 |
| <i>Avicennia marina</i> | Grey Mangrove seedling | 0.0 | 0.0 | 0.0 | 0.0 | 0.0 | 0.0 | 0.0 | 0.0 | 0.0 | 0.0 | 0.0 | 0.0 |
| <i>Avicennia marina</i> | Grey Mangrove pneumatophores | 0.0 | 0.0 | 0.0 | 0.0 | 0.0 | 0.0 | 0.0 | 0.0 | 0.0 | 0.0 | 0.0 | 0.0 |
| <i>Bidens pilosa</i> | Farmers Friend | 0.0 | 0.0 | 0.0 | 0.0 | 0.0 | 0.0 | 0.0 | 0.0 | 0.0 | 0.0 | 0.0 | 0.0 |
| <i>Carpobrotus sp.</i> | Pigface | 0.0 | 0.0 | 0.0 | 0.0 | 0.0 | 0.0 | 0.0 | 0.0 | 0.0 | 0.0 | 0.0 | 0.0 |
| <i>Cynodon dactylon</i> | Common Couch | 0.0 | 0.0 | 0.0 | 0.0 | 0.0 | 0.0 | 0.0 | 0.0 | 0.0 | 0.0 | 0.0 | 0.0 |
| <i>Hydrocotyle sp.</i> | Pennywort | 0.0 | 0.0 | 0.0 | 0.0 | 0.0 | 0.0 | 0.0 | 0.0 | 0.0 | 0.0 | 0.0 | 0.0 |
| <i>Isolepis nodosa</i> | Knobby Club-rush | 0.0 | 0.0 | 0.0 | 0.0 | 0.0 | 0.0 | 0.0 | 0.0 | 0.0 | 0.0 | 0.0 | 0.0 |
| <i>Juncus kraussii</i> | Sea Rush | 0.0 | 0.0 | 0.0 | 0.0 | 18.0 | 11.9 | 0.0 | 0.0 | 0.0 | 0.0 | 0.0 | 0.0 |
| <i>Plantago coronopus</i> | Plantain | 0.0 | 0.0 | 0.0 | 0.0 | 0.0 | 0.0 | 0.0 | 0.0 | 0.0 | 0.0 | 0.0 | 0.0 |
| <i>Samolus repens</i> | Creeping Brookweed | 0.0 | 0.0 | 0.0 | 0.0 | 0.0 | 0.0 | 0.0 | 0.0 | 0.0 | 0.0 | 0.0 | 0.0 |
| <i>Sarcocornia quinqueflora</i> | Beaded Glasswort | 65.8 | 20.5 | 57.5 | 16.5 | 28.0 | 17.6 | 18.8 | 8.3 | 66.8 | 21.8 | 15.0 | 15.0 |
| <i>Sarcocornia quinqueflora (Dead)</i> | Dead Beaded Glasswort | 0.0 | 0.0 | 0.0 | 0.0 | 0.0 | 0.0 | 0.0 | 0.0 | 0.0 | 0.0 | 0.0 | 0.0 |
| <i>Sarcocornia quinqueflora (Poor)</i> | Poor Condition Beaded Glasswort | 0.0 | 0.0 | 0.0 | 0.0 | 0.0 | 0.0 | 0.0 | 0.0 | 0.0 | 0.0 | 2.5 | 2.5 |
| <i>Spinifex sericeus</i> | Hairy Spinifex grass | 0.0 | 0.0 | 0.0 | 0.0 | 0.0 | 0.0 | 0.0 | 0.0 | 0.0 | 0.0 | 0.0 | 0.0 |
| <i>Spinifex sericeus (Dead)</i> | Dead Hairy Spinifex grass | 0.0 | 0.0 | 0.0 | 0.0 | 0.0 | 0.0 | 0.0 | 0.0 | 0.0 | 0.0 | 0.0 | 0.0 |
| <i>Sporobolus virginicus</i> | Salt Couch | 0.0 | 0.0 | 12.5 | 12.5 | 21.3 | 19.6 | 24.5 | 24.5 | 24.5 | 24.5 | 57.5 | 21.7 |
| <i>Sporobolus virginicus (Dead)</i> | Dead Salt Couch | 0.0 | 0.0 | 0.0 | 0.0 | 0.0 | 0.0 | 0.0 | 0.0 | 0.0 | 0.0 | 0.0 | 0.0 |
| <i>Sporobolus virginicus (Poor)</i> | Poor Condition Salt Couch | 0.0 | 0.0 | 0.0 | 0.0 | 0.0 | 0.0 | 0.0 | 0.0 | 0.0 | 0.0 | 0.0 | 0.0 |
| <i>Stenotaphrum secundatum</i> | Buffalo Grass | 0.0 | 0.0 | 0.0 | 0.0 | 0.0 | 0.0 | 0.0 | 0.0 | 0.0 | 0.0 | 0.0 | 0.0 |
| <i>Suaeda australis</i> | Seablite | 0.0 | 0.0 | 0.5 | 0.5 | 0.0 | 0.0 | 0.5 | 0.3 | 0.0 | 0.0 | 0.0 | 0.0 |
| <i>Suaeda australis (Dead)</i> | Dead Seablite | 0.0 | 0.0 | 0.0 | 0.0 | 0.0 | 0.0 | 0.0 | 0.0 | 0.0 | 0.0 | 0.0 | 0.0 |
| <i>Tetragonia tetragonioides</i> | New Zealand Spinach | 0.0 | 0.0 | 0.0 | 0.0 | 0.0 | 0.0 | 0.0 | 0.0 | 0.0 | 0.0 | 0.0 | 0.0 |
| unidentified green moss | unidentified green moss | 0.0 | 0.0 | 0.0 | 0.0 | 0.0 | 0.0 | 0.0 | 0.0 | 0.0 | 0.0 | 0.0 | 0.0 |
| unidentified rush | unidentified rush | 0.0 | 0.0 | 0.0 | 0.0 | 0.0 | 0.0 | 0.0 | 0.0 | 0.0 | 0.0 | 0.0 | 0.0 |
| unidentified rush (Dead) | Dead unidentified rush | 0.0 | 0.0 | 0.0 | 0.0 | 0.0 | 0.0 | 0.0 | 0.0 | 0.0 | 0.0 | 0.0 | 0.0 |
| unidentified herb | unidentified herb | 0.0 | 0.0 | 0.0 | 0.0 | 0.0 | 0.0 | 0.0 | 0.0 | 0.0 | 0.0 | 0.0 | 0.0 |
| unidentified plant | unidentified plant | 0.0 | 0.0 | 0.0 | 0.0 | 0.0 | 0.0 | 0.0 | 0.0 | 0.0 | 0.0 | 0.0 | 0.0 |

continued...

Table A-2: continued

| Species Name | Treatment Transect | Transplanted Saltmarsh | | | | | | Retained Saltmarsh 1 | | | |
|--|---------------------------------|------------------------|------|-------|------|-------|------|----------------------|------|-------|-----|
| | Common Name | TR-8 | | TR-17 | | TR-18 | | R1-7 | | R1-14 | |
| | | MEAN | SE | MEAN | SE | MEAN | SE | MEAN | SE | MEAN | SE |
| Bare | Bare ground | 28.8 | 17.7 | 56.8 | 24.4 | 26.3 | 23.0 | 44.3 | 8.8 | 87.8 | 5.2 |
| <i>Acacia sp.</i> | Unidentified Wattle | 0.0 | 0.0 | 0.0 | 0.0 | 0.0 | 0.0 | 0.0 | 0.0 | 0.0 | 0.0 |
| <i>Aegiceras corniculatum</i> | River Mangrove | 0.0 | 0.0 | 0.0 | 0.0 | 0.0 | 0.0 | 0.0 | 0.0 | 0.0 | 0.0 |
| <i>Atriplex australasica</i> | Green Saltbush | 0.0 | 0.0 | 0.0 | 0.0 | 0.0 | 0.0 | 0.0 | 0.0 | 0.0 | 0.0 |
| <i>Avicennia marina</i> | Grey Mangrove tree | 0.0 | 0.0 | 0.0 | 0.0 | 0.0 | 0.0 | 0.0 | 0.0 | 0.0 | 0.0 |
| <i>Avicennia marina</i> | Grey Mangrove seedling | 0.0 | 0.0 | 0.0 | 0.0 | 0.0 | 0.0 | 0.0 | 0.0 | 0.0 | 0.0 |
| <i>Avicennia marina</i> | Grey Mangrove pneumatophores | 0.0 | 0.0 | 0.0 | 0.0 | 0.0 | 0.0 | 0.0 | 0.0 | 0.0 | 0.0 |
| <i>Bidens pilosa</i> | Farmers Friend | 0.0 | 0.0 | 1.3 | 1.3 | 0.0 | 0.0 | 0.0 | 0.0 | 0.0 | 0.0 |
| <i>Carpobrotus sp.</i> | Pigface | 0.0 | 0.0 | 0.0 | 0.0 | 0.0 | 0.0 | 0.0 | 0.0 | 0.0 | 0.0 |
| <i>Cynodon dactylon</i> | Common Couch | 0.0 | 0.0 | 0.0 | 0.0 | 0.0 | 0.0 | 0.0 | 0.0 | 0.0 | 0.0 |
| <i>Hydrocotyle sp.</i> | Pennywort | 0.0 | 0.0 | 0.0 | 0.0 | 0.0 | 0.0 | 0.0 | 0.0 | 0.0 | 0.0 |
| <i>Isolepis nodosa</i> | Knobby Club-rush | 0.0 | 0.0 | 0.0 | 0.0 | 0.0 | 0.0 | 0.0 | 0.0 | 0.0 | 0.0 |
| <i>Juncus kraussii</i> | Sea Rush | 10.0 | 10.0 | 0.0 | 0.0 | 0.0 | 0.0 | 0.0 | 0.0 | 0.0 | 0.0 |
| <i>Plantago coronopus</i> | Plantain | 0.0 | 0.0 | 0.0 | 0.0 | 0.0 | 0.0 | 0.0 | 0.0 | 0.0 | 0.0 |
| <i>Samolus repens</i> | Creeping Brookweed | 0.0 | 0.0 | 0.0 | 0.0 | 0.0 | 0.0 | 0.0 | 0.0 | 0.0 | 0.0 |
| <i>Sarcocornia quinqueflora</i> | Beaded Glasswort | 0.0 | 0.0 | 0.0 | 0.0 | 0.0 | 0.0 | 32.8 | 16.9 | 8.3 | 5.7 |
| <i>Sarcocornia quinqueflora (Dead)</i> | Dead Beaded Glasswort | 0.0 | 0.0 | 0.0 | 0.0 | 0.0 | 0.0 | 0.0 | 0.0 | 0.0 | 0.0 |
| <i>Sarcocornia quinqueflora (Poor)</i> | Poor Condition Beaded Glasswort | 0.0 | 0.0 | 0.0 | 0.0 | 0.0 | 0.0 | 0.0 | 0.0 | 0.0 | 0.0 |
| <i>Spinifex sericeus</i> | Hairy Spinifex grass | 0.0 | 0.0 | 0.0 | 0.0 | 0.0 | 0.0 | 1.3 | 1.3 | 4.0 | 4.0 |
| <i>Spinifex sericeus (Dead)</i> | Dead Hairy Spinifex grass | 0.0 | 0.0 | 0.0 | 0.0 | 0.0 | 0.0 | 0.0 | 0.0 | 0.0 | 0.0 |
| <i>Sporobolus virginicus</i> | Salt Couch | 47.5 | 27.4 | 38.8 | 23.5 | 48.8 | 26.8 | 0.0 | 0.0 | 0.0 | 0.0 |
| <i>Sporobolus virginicus (Dead)</i> | Dead Salt Couch | 0.0 | 0.0 | 0.0 | 0.0 | 0.0 | 0.0 | 0.0 | 0.0 | 0.0 | 0.0 |
| <i>Sporobolus virginicus (Poor)</i> | Poor Condition Salt Couch | 0.0 | 0.0 | 0.0 | 0.0 | 25.0 | 25.0 | 0.0 | 0.0 | 0.0 | 0.0 |
| <i>Stenotaphrum secundatum</i> | Buffalo Grass | 0.0 | 0.0 | 0.0 | 0.0 | 0.0 | 0.0 | 0.0 | 0.0 | 0.0 | 0.0 |
| <i>Suaeda australis</i> | Seablite | 13.8 | 8.5 | 3.3 | 2.0 | 0.0 | 0.0 | 21.8 | 14.0 | 0.0 | 0.0 |
| <i>Suaeda australis (Dead)</i> | Dead Seablite | 0.0 | 0.0 | 0.0 | 0.0 | 0.0 | 0.0 | 0.0 | 0.0 | 0.0 | 0.0 |
| <i>Tetragonia tetragonioides</i> | New Zealand Spinach | 0.0 | 0.0 | 0.0 | 0.0 | 0.0 | 0.0 | 0.0 | 0.0 | 0.0 | 0.0 |
| unidentified green moss | unidentified green moss | 0.0 | 0.0 | 0.0 | 0.0 | 0.0 | 0.0 | 0.0 | 0.0 | 0.0 | 0.0 |
| unidentified rush | unidentified rush | 0.0 | 0.0 | 0.0 | 0.0 | 0.0 | 0.0 | 0.0 | 0.0 | 0.0 | 0.0 |
| unidentified rush (Dead) | Dead unidentified rush | 0.0 | 0.0 | 0.0 | 0.0 | 0.0 | 0.0 | 0.0 | 0.0 | 0.0 | 0.0 |
| unidentified herb | unidentified herb | 0.0 | 0.0 | 0.0 | 0.0 | 0.0 | 0.0 | 0.0 | 0.0 | 0.0 | 0.0 |
| unidentified plant | unidentified plant | 0.0 | 0.0 | 0.0 | 0.0 | 0.0 | 0.0 | 0.0 | 0.0 | 0.0 | 0.0 |

continued...

Table A-2: continued

| Species Name | Treatment Transect Common Name | Retained Saltmarsh 2 | | | | Altered Saltmarsh 2 | | | | | |
|--|--------------------------------------|----------------------|------|-------|------|---------------------|------|-------|-----|-------|-----|
| | | R2-20 | | R2-22 | | A2-15 | | A2-16 | | A2-19 | |
| | | MEAN | SE | MEAN | SE | MEAN | SE | MEAN | SE | MEAN | SE |
| Bare | Bare ground | 20.5 | 4.6 | 24.0 | 12.6 | 71.3 | 22.6 | 91.3 | 4.3 | 18.8 | 7.2 |
| <i>Acacia sp.</i> | Unidentified Wattle | 0.0 | 0.0 | 0.0 | 0.0 | 0.0 | 0.0 | 0.0 | 0.0 | 0.0 | 0.0 |
| <i>Aegiceras corniculatum</i> | River Mangrove | 0.0 | 0.0 | 0.0 | 0.0 | 0.0 | 0.0 | 0.0 | 0.0 | 0.0 | 0.0 |
| <i>Atriplex australasica</i> | Green Saltbush | 0.0 | 0.0 | 0.0 | 0.0 | 0.0 | 0.0 | 0.0 | 0.0 | 0.0 | 0.0 |
| <i>Avicennia marina</i> | Grey Mangrove tree | 0.0 | 0.0 | 0.0 | 0.0 | 0.0 | 0.0 | 0.0 | 0.0 | 0.0 | 0.0 |
| <i>Avicennia marina</i> | Grey Mangrove seedling | 0.0 | 0.0 | 0.0 | 0.0 | 0.0 | 0.0 | 0.0 | 0.0 | 0.0 | 0.0 |
| <i>Avicennia marina</i> | Grey Mangrove pneumatophores | 0.0 | 0.0 | 0.0 | 0.0 | 0.0 | 0.0 | 0.0 | 0.0 | 0.0 | 0.0 |
| <i>Bidens pilosa</i> | Farmers Friend | 0.0 | 0.0 | 0.0 | 0.0 | 0.0 | 0.0 | 0.0 | 0.0 | 0.0 | 0.0 |
| <i>Carpobrotus sp.</i> | Pigface | 0.0 | 0.0 | 0.0 | 0.0 | 0.0 | 0.0 | 0.0 | 0.0 | 0.0 | 0.0 |
| <i>Cynodon dactylon</i> | Common Couch | 0.0 | 0.0 | 0.0 | 0.0 | 0.0 | 0.0 | 0.0 | 0.0 | 0.0 | 0.0 |
| <i>Hydrocotyle sp.</i> | Pennywort | 0.0 | 0.0 | 0.0 | 0.0 | 0.0 | 0.0 | 0.0 | 0.0 | 0.0 | 0.0 |
| <i>Isolepis nodosa</i> | Knobby Club-rush | 0.0 | 0.0 | 0.0 | 0.0 | 0.0 | 0.0 | 0.0 | 0.0 | 0.0 | 0.0 |
| <i>Juncus kraussii</i> | Sea Rush | 2.5 | 2.5 | 0.0 | 0.0 | 0.0 | 0.0 | 0.0 | 0.0 | 0.0 | 0.0 |
| <i>Plantago coronopus</i> | Plantain | 0.0 | 0.0 | 0.0 | 0.0 | 0.0 | 0.0 | 0.0 | 0.0 | 0.0 | 0.0 |
| <i>Samolus repens</i> | Creeping Brookweed | 0.0 | 0.0 | 0.0 | 0.0 | 0.0 | 0.0 | 0.0 | 0.0 | 0.0 | 0.0 |
| <i>Sarcocornia quinqueflora</i> | Beaded Glasswort | 17.5 | 17.5 | 21.3 | 21.3 | 0.0 | 0.0 | 0.0 | 0.0 | 0.0 | 0.0 |
| <i>Sarcocornia quinqueflora (Dead)</i> | Dead Beaded Glasswort | 0.0 | 0.0 | 0.0 | 0.0 | 0.0 | 0.0 | 0.0 | 0.0 | 0.0 | 0.0 |
| <i>Sarcocornia quinqueflora (Poor)</i> | Poor Condition Beaded Glasswort | 0.0 | 0.0 | 4.8 | 3.5 | 0.0 | 0.0 | 0.0 | 0.0 | 0.0 | 0.0 |
| <i>Spinifex sericeus</i> | Hairy Spinifex grass | 0.0 | 0.0 | 0.0 | 0.0 | 0.0 | 0.0 | 0.0 | 0.0 | 0.0 | 0.0 |
| <i>Spinifex sericeus (Dead)</i> | Dead Hairy Spinifex grass | 0.0 | 0.0 | 0.0 | 0.0 | 0.0 | 0.0 | 0.0 | 0.0 | 0.0 | 0.0 |
| <i>Sporobolus virginicus</i> | Salt Couch | 0.0 | 0.0 | 41.3 | 23.8 | 21.3 | 21.3 | 0.0 | 0.0 | 76.3 | 6.9 |
| <i>Sporobolus virginicus (Dead)</i> | Dead Salt Couch | 0.0 | 0.0 | 0.0 | 0.0 | 0.0 | 0.0 | 0.0 | 0.0 | 0.0 | 0.0 |
| <i>Sporobolus virginicus (Poor)</i> | Poor Condition Salt Couch | 0.0 | 0.0 | 0.0 | 0.0 | 0.0 | 0.0 | 0.0 | 0.0 | 0.0 | 0.0 |
| <i>Stenotaphrum secundatum</i> | Buffalo Grass | 0.0 | 0.0 | 0.0 | 0.0 | 0.0 | 0.0 | 0.0 | 0.0 | 0.0 | 0.0 |
| <i>Suaeda australis</i> | Seablite | 59.0 | 19.8 | 8.8 | 8.8 | 7.5 | 4.8 | 0.0 | 0.0 | 5.0 | 5.0 |
| <i>Suaeda australis (Dead)</i> | Dead Seablite | 0.0 | 0.0 | 0.0 | 0.0 | 0.0 | 0.0 | 0.0 | 0.0 | 0.0 | 0.0 |
| <i>Tetragonia tetragonioides</i> | New Zealand Spinach | 0.5 | 0.5 | 0.0 | 0.0 | 0.0 | 0.0 | 0.0 | 0.0 | 0.0 | 0.0 |
| unidentified green moss | unidentified green moss | 0.0 | 0.0 | 0.0 | 0.0 | 0.0 | 0.0 | 0.0 | 0.0 | 0.0 | 0.0 |
| unidentified rush | unidentified rush | 0.0 | 0.0 | 0.0 | 0.0 | 0.0 | 0.0 | 8.8 | 4.3 | 0.0 | 0.0 |
| unidentified rush (Dead) | Dead unidentified rush | 0.0 | 0.0 | 0.0 | 0.0 | 0.0 | 0.0 | 0.0 | 0.0 | 0.0 | 0.0 |
| unidentified herb | unidentified herb | 0.0 | 0.0 | 0.0 | 0.0 | 0.0 | 0.0 | 0.0 | 0.0 | 0.0 | 0.0 |
| unidentified plant | unidentified plant | 0.0 | 0.0 | 0.0 | 0.0 | 0.0 | 0.0 | 0.0 | 0.0 | 0.0 | 0.0 |

continued...

Table A-2: continued

| Species Name | Treatment Transect Common Name | Reference Quibray Bay 1 | | | | | | Reference Quibray Bay 2 | | | | | |
|--|--------------------------------------|-------------------------|------|------|------|------|------|-------------------------|------|------|------|------|------|
| | | Q1-1 | | Q1-2 | | Q1-3 | | Q2-4 | | Q2-5 | | Q2-6 | |
| | | MEAN | SE | MEAN | SE | MEAN | SE | MEAN | SE | MEAN | SE | MEAN | SE |
| Bare | Bare ground | 36.3 | 22.1 | 12.0 | 9.4 | 25.8 | 9.2 | 29.0 | 15.6 | 5.0 | 2.0 | 18.8 | 8.3 |
| <i>Acacia sp.</i> | Unidentified Wattle | 0.0 | 0.0 | 0.0 | 0.0 | 0.0 | 0.0 | 0.0 | 0.0 | 0.0 | 0.0 | 0.0 | 0.0 |
| <i>Aegiceras corniculatum</i> | River Mangrove | 0.0 | 0.0 | 0.0 | 0.0 | 0.0 | 0.0 | 0.0 | 0.0 | 0.0 | 0.0 | 0.0 | 0.0 |
| <i>Atriplex australasica</i> | Green Saltbush | 0.0 | 0.0 | 0.0 | 0.0 | 0.0 | 0.0 | 0.0 | 0.0 | 0.0 | 0.0 | 0.0 | 0.0 |
| <i>Avicennia marina</i> | Grey Mangrove tree | 0.0 | 0.0 | 0.0 | 0.0 | 0.0 | 0.0 | 0.0 | 0.0 | 0.0 | 0.0 | 0.0 | 0.0 |
| <i>Avicennia marina</i> | Grey Mangrove seedling | 0.0 | 0.0 | 0.0 | 0.0 | 0.0 | 0.0 | 6.3 | 6.3 | 0.0 | 0.0 | 0.0 | 0.0 |
| <i>Avicennia marina</i> | Grey Mangrove pneumatophores | 0.0 | 0.0 | 0.0 | 0.0 | 0.0 | 0.0 | 1.3 | 1.3 | 0.0 | 0.0 | 0.0 | 0.0 |
| <i>Bidens pilosa</i> | Farmers Friend | 0.0 | 0.0 | 0.0 | 0.0 | 0.0 | 0.0 | 0.0 | 0.0 | 0.0 | 0.0 | 0.0 | 0.0 |
| <i>Carpobrotus sp.</i> | Pigface | 0.0 | 0.0 | 0.0 | 0.0 | 0.0 | 0.0 | 0.0 | 0.0 | 0.0 | 0.0 | 0.0 | 0.0 |
| <i>Cynodon dactylon</i> | Common Couch | 0.0 | 0.0 | 0.0 | 0.0 | 0.0 | 0.0 | 0.0 | 0.0 | 0.0 | 0.0 | 0.0 | 0.0 |
| <i>Hydrocotyle sp.</i> | Pennywort | 5.0 | 5.0 | 14.0 | 9.5 | 0.0 | 0.0 | 0.0 | 0.0 | 0.0 | 0.0 | 0.0 | 0.0 |
| <i>Isolepis nodosa</i> | Knobby Club-rush | 0.0 | 0.0 | 0.0 | 0.0 | 0.0 | 0.0 | 0.0 | 0.0 | 0.0 | 0.0 | 0.0 | 0.0 |
| <i>Juncus kraussii</i> | Sea Rush | 0.0 | 0.0 | 0.0 | 0.0 | 0.0 | 0.0 | 0.0 | 0.0 | 0.0 | 0.0 | 0.0 | 0.0 |
| <i>Plantago coronopus</i> | Plantain | 0.0 | 0.0 | 0.0 | 0.0 | 0.0 | 0.0 | 0.0 | 0.0 | 0.0 | 0.0 | 0.0 | 0.0 |
| <i>Samolus repens</i> | Creeping Brookweed | 0.0 | 0.0 | 0.0 | 0.0 | 0.0 | 0.0 | 0.0 | 0.0 | 0.0 | 0.0 | 0.0 | 0.0 |
| <i>Sarcocornia quinqueflora</i> | Beaded Glasswort | 42.3 | 22.0 | 43.8 | 21.2 | 45.5 | 21.4 | 33.5 | 19.6 | 58.8 | 23.2 | 40.8 | 22.8 |
| <i>Sarcocornia quinqueflora (Dead)</i> | Dead Beaded Glasswort | 0.0 | 0.0 | 0.0 | 0.0 | 0.0 | 0.0 | 0.0 | 0.0 | 0.0 | 0.0 | 0.0 | 0.0 |
| <i>Sarcocornia quinqueflora (Poor)</i> | Poor Condition Beaded Glasswort | 0.0 | 0.0 | 0.0 | 0.0 | 0.0 | 0.0 | 0.0 | 0.0 | 0.0 | 0.0 | 0.0 | 0.0 |
| <i>Spinifex sericeus</i> | Hairy Spinifex grass | 0.0 | 0.0 | 0.0 | 0.0 | 0.0 | 0.0 | 0.0 | 0.0 | 0.0 | 0.0 | 0.0 | 0.0 |
| <i>Spinifex sericeus (Dead)</i> | Dead Hairy Spinifex grass | 0.0 | 0.0 | 0.0 | 0.0 | 0.0 | 0.0 | 0.0 | 0.0 | 0.0 | 0.0 | 0.0 | 0.0 |
| <i>Sporobolus virginicus</i> | Salt Couch | 10.0 | 10.0 | 30.3 | 19.4 | 0.0 | 0.0 | 21.3 | 19.6 | 36.3 | 22.1 | 40.5 | 23.2 |
| <i>Sporobolus virginicus (Dead)</i> | Dead Salt Couch | 0.0 | 0.0 | 0.0 | 0.0 | 0.0 | 0.0 | 0.0 | 0.0 | 0.0 | 0.0 | 0.0 | 0.0 |
| <i>Sporobolus virginicus (Poor)</i> | Poor Condition Salt Couch | 0.0 | 0.0 | 0.0 | 0.0 | 0.0 | 0.0 | 0.0 | 0.0 | 0.0 | 0.0 | 0.0 | 0.0 |
| <i>Stenotaphrum secundatum</i> | Buffalo Grass | 0.0 | 0.0 | 0.0 | 0.0 | 0.0 | 0.0 | 0.0 | 0.0 | 0.0 | 0.0 | 0.0 | 0.0 |
| <i>Suaeda australis</i> | Seablite | 6.5 | 6.2 | 0.0 | 0.0 | 28.8 | 17.4 | 8.8 | 8.8 | 0.0 | 0.0 | 0.0 | 0.0 |
| <i>Suaeda australis (Dead)</i> | Dead Seablite | 0.0 | 0.0 | 0.0 | 0.0 | 0.0 | 0.0 | 0.0 | 0.0 | 0.0 | 0.0 | 0.0 | 0.0 |
| <i>Tetragonia tetragonioides</i> | New Zealand Spinach | 0.0 | 0.0 | 0.0 | 0.0 | 0.0 | 0.0 | 0.0 | 0.0 | 0.0 | 0.0 | 0.0 | 0.0 |
| unidentified green moss | unidentified green moss | 0.0 | 0.0 | 0.0 | 0.0 | 0.0 | 0.0 | 0.0 | 0.0 | 0.0 | 0.0 | 0.0 | 0.0 |
| unidentified rush | unidentified rush | 0.0 | 0.0 | 0.0 | 0.0 | 0.0 | 0.0 | 0.0 | 0.0 | 0.0 | 0.0 | 0.0 | 0.0 |
| unidentified rush (Dead) | Dead unidentified rush | 0.0 | 0.0 | 0.0 | 0.0 | 0.0 | 0.0 | 0.0 | 0.0 | 0.0 | 0.0 | 0.0 | 0.0 |
| unidentified herb | unidentified herb | 0.0 | 0.0 | 0.0 | 0.0 | 0.0 | 0.0 | 0.0 | 0.0 | 0.0 | 0.0 | 0.0 | 0.0 |
| unidentified plant | unidentified plant | 0.0 | 0.0 | 0.0 | 0.0 | 0.0 | 0.0 | 0.0 | 0.0 | 0.0 | 0.0 | 0.0 | 0.0 |

continued...

Table A-2: continued

| Species Name | Treatment Transect Common Name | Reference Woolooware Bay 1 | | | | | | Reference Woolooware Bay 2 | | | | | |
|--|--------------------------------------|----------------------------|------|------|-----|------|------|----------------------------|------|------|------|------|------|
| | | W1-1 | | W1-2 | | W1-3 | | W2-4 | | W2-5 | | W2-6 | |
| | | MEAN | SE | MEAN | SE | MEAN | SE | MEAN | SE | MEAN | SE | MEAN | SE |
| Bare | Bare ground | 27.8 | 14.8 | 8.8 | 4.3 | 31.8 | 6.9 | 18.8 | 3.8 | 35.3 | 17.7 | 17.8 | 5.3 |
| <i>Acacia sp.</i> | Unidentified Wattle | 0.0 | 0.0 | 0.0 | 0.0 | 0.0 | 0.0 | 0.0 | 0.0 | 0.0 | 0.0 | 0.0 | 0.0 |
| <i>Aegiceras corniculatum</i> | River Mangrove | 0.0 | 0.0 | 0.0 | 0.0 | 0.0 | 0.0 | 0.0 | 0.0 | 0.0 | 0.0 | 0.0 | 0.0 |
| <i>Atriplex australasica</i> | Green Saltbush | 0.0 | 0.0 | 0.0 | 0.0 | 0.0 | 0.0 | 0.0 | 0.0 | 0.0 | 0.0 | 0.0 | 0.0 |
| <i>Avicennia marina</i> | Grey Mangrove tree | 0.0 | 0.0 | 0.0 | 0.0 | 0.0 | 0.0 | 0.0 | 0.0 | 0.0 | 0.0 | 0.0 | 0.0 |
| <i>Avicennia marina</i> | Grey Mangrove seedling | 0.0 | 0.0 | 0.0 | 0.0 | 0.0 | 0.0 | 0.0 | 0.0 | 0.0 | 0.0 | 0.0 | 0.0 |
| <i>Avicennia marina</i> | Grey Mangrove pneumatophores | 0.0 | 0.0 | 0.0 | 0.0 | 0.0 | 0.0 | 0.0 | 0.0 | 0.0 | 0.0 | 0.0 | 0.0 |
| <i>Bidens pilosa</i> | Farmers Friend | 0.0 | 0.0 | 0.0 | 0.0 | 0.0 | 0.0 | 0.0 | 0.0 | 0.0 | 0.0 | 0.0 | 0.0 |
| <i>Carpobrotus sp.</i> | Pigface | 0.0 | 0.0 | 0.0 | 0.0 | 0.0 | 0.0 | 0.0 | 0.0 | 0.0 | 0.0 | 0.0 | 0.0 |
| <i>Cynodon dactylon</i> | Common Couch | 0.0 | 0.0 | 0.0 | 0.0 | 0.0 | 0.0 | 0.0 | 0.0 | 0.0 | 0.0 | 0.0 | 0.0 |
| <i>Hydrocotyle sp.</i> | Pennywort | 0.0 | 0.0 | 0.0 | 0.0 | 0.0 | 0.0 | 0.0 | 0.0 | 0.0 | 0.0 | 0.0 | 0.0 |
| <i>Isolepis nodosa</i> | Knobby Club-rush | 0.0 | 0.0 | 0.0 | 0.0 | 0.0 | 0.0 | 0.0 | 0.0 | 0.0 | 0.0 | 0.0 | 0.0 |
| <i>Juncus kraussii</i> | Sea Rush | 0.0 | 0.0 | 0.0 | 0.0 | 0.0 | 0.0 | 0.0 | 0.0 | 0.0 | 0.0 | 0.0 | 0.0 |
| <i>Plantago coronopus</i> | Plantain | 0.0 | 0.0 | 0.0 | 0.0 | 0.0 | 0.0 | 0.0 | 0.0 | 0.0 | 0.0 | 0.0 | 0.0 |
| <i>Samolus repens</i> | Creeping Brookweed | 0.0 | 0.0 | 0.0 | 0.0 | 0.0 | 0.0 | 0.0 | 0.0 | 0.0 | 0.0 | 0.0 | 0.0 |
| <i>Sarcocornia quinqueflora</i> | Beaded Glasswort | 38.8 | 22.6 | 83.8 | 5.5 | 0.8 | 0.8 | 61.3 | 20.7 | 51.0 | 15.8 | 60.0 | 20.1 |
| <i>Sarcocornia quinqueflora (Dead)</i> | Dead Beaded Glasswort | 0.0 | 0.0 | 0.0 | 0.0 | 0.0 | 0.0 | 0.0 | 0.0 | 0.0 | 0.0 | 0.0 | 0.0 |
| <i>Sarcocornia quinqueflora (Poor)</i> | Poor Condition Beaded Glasswort | 1.0 | 1.0 | 0.0 | 0.0 | 48.8 | 17.8 | 0.0 | 0.0 | 0.0 | 0.0 | 2.5 | 2.5 |
| <i>Spinifex sericeus</i> | Hairy Spinifex grass | 0.0 | 0.0 | 0.0 | 0.0 | 0.0 | 0.0 | 0.0 | 0.0 | 0.0 | 0.0 | 0.0 | 0.0 |
| <i>Spinifex sericeus (Dead)</i> | Dead Hairy Spinifex grass | 0.0 | 0.0 | 0.0 | 0.0 | 0.0 | 0.0 | 0.0 | 0.0 | 0.0 | 0.0 | 0.0 | 0.0 |
| <i>Sporobolus virginicus</i> | Salt Couch | 6.3 | 6.3 | 0.0 | 0.0 | 3.8 | 3.8 | 1.3 | 1.3 | 0.0 | 0.0 | 1.0 | 1.0 |
| <i>Sporobolus virginicus (Dead)</i> | Dead Salt Couch | 0.0 | 0.0 | 0.0 | 0.0 | 0.0 | 0.0 | 0.0 | 0.0 | 0.0 | 0.0 | 0.0 | 0.0 |
| <i>Sporobolus virginicus (Poor)</i> | Poor Condition Salt Couch | 0.0 | 0.0 | 0.0 | 0.0 | 0.0 | 0.0 | 0.0 | 0.0 | 0.0 | 0.0 | 0.0 | 0.0 |
| <i>Stenotaphrum secundatum</i> | Buffalo Grass | 0.0 | 0.0 | 0.0 | 0.0 | 0.0 | 0.0 | 0.0 | 0.0 | 0.0 | 0.0 | 0.0 | 0.0 |
| <i>Suaeda australis</i> | Seablite | 26.3 | 18.9 | 7.5 | 7.5 | 15.0 | 11.9 | 18.8 | 18.8 | 13.8 | 3.8 | 18.8 | 14.2 |
| <i>Suaeda australis (Dead)</i> | Dead Seablite | 0.0 | 0.0 | 0.0 | 0.0 | 0.0 | 0.0 | 0.0 | 0.0 | 0.0 | 0.0 | 0.0 | 0.0 |
| <i>Tetragonia tetragonioides</i> | New Zealand Spinach | 0.0 | 0.0 | 0.0 | 0.0 | 0.0 | 0.0 | 0.0 | 0.0 | 0.0 | 0.0 | 0.0 | 0.0 |
| unidentified green moss | unidentified green moss | 0.0 | 0.0 | 0.0 | 0.0 | 0.0 | 0.0 | 0.0 | 0.0 | 0.0 | 0.0 | 0.0 | 0.0 |
| unidentified rush | unidentified rush | 0.0 | 0.0 | 0.0 | 0.0 | 0.0 | 0.0 | 0.0 | 0.0 | 0.0 | 0.0 | 0.0 | 0.0 |
| unidentified rush (Dead) | Dead unidentified rush | 0.0 | 0.0 | 0.0 | 0.0 | 0.0 | 0.0 | 0.0 | 0.0 | 0.0 | 0.0 | 0.0 | 0.0 |
| unidentified herb | unidentified herb | 0.0 | 0.0 | 0.0 | 0.0 | 0.0 | 0.0 | 0.0 | 0.0 | 0.0 | 0.0 | 0.0 | 0.0 |
| unidentified plant | unidentified plant | 0.0 | 0.0 | 0.0 | 0.0 | 0.0 | 0.0 | 0.0 | 0.0 | 0.0 | 0.0 | 0.0 | 0.0 |

continued...

Table A-2: continued

| Species Name | Treatment Transect Common Name | Treated Reference Sans Souci | | | | | | Treated Reference Salt Pan Creek | | | | | |
|--|--------------------------------------|------------------------------|------|-------|------|-------|------|----------------------------------|-----|--------|------|--------|------|
| | | SS1-1 | | SS1-2 | | SS1-3 | | SPC1-1 | | SPC1-2 | | SPC1-3 | |
| | | MEAN | SE | MEAN | SE | MEAN | SE | MEAN | SE | MEAN | SE | MEAN | SE |
| Bare | Bare ground | 53.5 | 20.4 | 81.8 | 10.5 | 75.5 | 8.3 | 100.0 | 0.0 | 30.5 | 11.2 | 19.3 | 13.0 |
| <i>Acacia sp.</i> | Unidentified Wattle | 0.0 | 0.0 | 0.0 | 0.0 | 0.0 | 0.0 | 0.0 | 0.0 | 0.0 | 0.0 | 0.0 | 0.0 |
| <i>Aegiceras corniculatum</i> | River Mangrove | 0.0 | 0.0 | 0.0 | 0.0 | 0.0 | 0.0 | 0.0 | 0.0 | 0.8 | 0.8 | 0.0 | 0.0 |
| <i>Atriplex australasica</i> | Green Saltbush | 0.0 | 0.0 | 0.0 | 0.0 | 0.0 | 0.0 | 0.0 | 0.0 | 16.3 | 9.0 | 38.0 | 21.5 |
| <i>Avicennia marina</i> | Grey Mangrove tree | 0.0 | 0.0 | 0.0 | 0.0 | 0.0 | 0.0 | 0.0 | 0.0 | 0.0 | 0.0 | 0.0 | 0.0 |
| <i>Avicennia marina</i> | Grey Mangrove seedling | 0.0 | 0.0 | 0.0 | 0.0 | 0.0 | 0.0 | 0.0 | 0.0 | 0.0 | 0.0 | 0.0 | 0.0 |
| <i>Avicennia marina</i> | Grey Mangrove pneumatophores | 0.0 | 0.0 | 0.0 | 0.0 | 0.0 | 0.0 | 0.0 | 0.0 | 0.0 | 0.0 | 0.0 | 0.0 |
| <i>Bidens pilosa</i> | Farmers Friend | 0.0 | 0.0 | 0.0 | 0.0 | 0.0 | 0.0 | 0.0 | 0.0 | 0.0 | 0.0 | 0.0 | 0.0 |
| <i>Carpobrotus sp.</i> | Pigface | 0.0 | 0.0 | 0.0 | 0.0 | 0.0 | 0.0 | 0.0 | 0.0 | 0.0 | 0.0 | 0.0 | 0.0 |
| <i>Cynodon dactylon</i> | Common Couch | 0.0 | 0.0 | 0.0 | 0.0 | 0.0 | 0.0 | 0.0 | 0.0 | 0.0 | 0.0 | 0.0 | 0.0 |
| <i>Hydrocotyle sp.</i> | Pennywort | 0.0 | 0.0 | 0.0 | 0.0 | 0.0 | 0.0 | 0.0 | 0.0 | 0.0 | 0.0 | 0.0 | 0.0 |
| <i>Isolepis nodosa</i> | Knobby Club-rush | 0.0 | 0.0 | 0.0 | 0.0 | 0.0 | 0.0 | 0.0 | 0.0 | 0.0 | 0.0 | 0.0 | 0.0 |
| <i>Juncus kraussii</i> | Sea Rush | 26.3 | 24.6 | 0.3 | 0.3 | 5.0 | 5.0 | 0.0 | 0.0 | 0.0 | 0.0 | 0.0 | 0.0 |
| <i>Plantago coronopus</i> | Plantain | 0.0 | 0.0 | 0.0 | 0.0 | 0.0 | 0.0 | 0.0 | 0.0 | 0.0 | 0.0 | 0.0 | 0.0 |
| <i>Samolus repens</i> | Creeping Brookweed | 0.0 | 0.0 | 0.0 | 0.0 | 0.0 | 0.0 | 0.0 | 0.0 | 2.5 | 2.5 | 42.5 | 20.1 |
| <i>Sarcocornia quinqueflora</i> | Beaded Glasswort | 11.5 | 11.2 | 18.0 | 10.6 | 17.5 | 10.1 | 0.0 | 0.0 | 0.0 | 0.0 | 0.0 | 0.0 |
| <i>Sarcocornia quinqueflora (Dead)</i> | Dead Beaded Glasswort | 0.0 | 0.0 | 0.0 | 0.0 | 0.0 | 0.0 | 0.0 | 0.0 | 0.0 | 0.0 | 0.0 | 0.0 |
| <i>Sarcocornia quinqueflora (Poor)</i> | Poor Condition Beaded Glasswort | 8.8 | 8.8 | 0.0 | 0.0 | 2.0 | 2.0 | 0.0 | 0.0 | 0.0 | 0.0 | 0.0 | 0.0 |
| <i>Spinifex sericeus</i> | Hairy Spinifex grass | 0.0 | 0.0 | 0.0 | 0.0 | 0.0 | 0.0 | 0.0 | 0.0 | 0.0 | 0.0 | 0.0 | 0.0 |
| <i>Spinifex sericeus (Dead)</i> | Dead Hairy Spinifex grass | 0.0 | 0.0 | 0.0 | 0.0 | 0.0 | 0.0 | 0.0 | 0.0 | 0.0 | 0.0 | 0.0 | 0.0 |
| <i>Sporobolus virginicus</i> | Salt Couch | 0.0 | 0.0 | 0.0 | 0.0 | 0.0 | 0.0 | 0.0 | 0.0 | 0.0 | 0.0 | 0.0 | 0.0 |
| <i>Sporobolus virginicus (Dead)</i> | Dead Salt Couch | 0.0 | 0.0 | 0.0 | 0.0 | 0.0 | 0.0 | 0.0 | 0.0 | 0.0 | 0.0 | 0.0 | 0.0 |
| <i>Sporobolus virginicus (Poor)</i> | Poor Condition Salt Couch | 0.0 | 0.0 | 0.0 | 0.0 | 0.0 | 0.0 | 0.0 | 0.0 | 0.0 | 0.0 | 0.0 | 0.0 |
| <i>Stenotaphrum secundatum</i> | Buffalo Grass | 0.0 | 0.0 | 0.0 | 0.0 | 0.0 | 0.0 | 0.0 | 0.0 | 0.0 | 0.0 | 0.0 | 0.0 |
| <i>Suaeda australis</i> | Seablite | 0.0 | 0.0 | 0.0 | 0.0 | 0.0 | 0.0 | 0.0 | 0.0 | 50.0 | 16.8 | 0.0 | 0.0 |
| <i>Suaeda australis (Dead)</i> | Dead Seablite | 0.0 | 0.0 | 0.0 | 0.0 | 0.0 | 0.0 | 0.0 | 0.0 | 0.0 | 0.0 | 0.0 | 0.0 |
| <i>Tetragonia tetragonioides</i> | New Zealand Spinach | 0.0 | 0.0 | 0.0 | 0.0 | 0.0 | 0.0 | 0.0 | 0.0 | 0.0 | 0.0 | 0.0 | 0.0 |
| unidentified green moss | unidentified green moss | 0.0 | 0.0 | 0.0 | 0.0 | 0.0 | 0.0 | 0.0 | 0.0 | 0.0 | 0.0 | 0.0 | 0.0 |
| unidentified rush | unidentified rush | 0.0 | 0.0 | 0.0 | 0.0 | 0.0 | 0.0 | 0.0 | 0.0 | 0.0 | 0.0 | 0.0 | 0.0 |
| unidentified rush (Dead) | Dead unidentified rush | 0.0 | 0.0 | 0.0 | 0.0 | 0.0 | 0.0 | 0.0 | 0.0 | 0.0 | 0.0 | 0.0 | 0.0 |
| unidentified herb | unidentified herb | 0.0 | 0.0 | 0.0 | 0.0 | 0.0 | 0.0 | 0.0 | 0.0 | 0.0 | 0.0 | 0.0 | 0.0 |
| unidentified plant | unidentified plant | 0.0 | 0.0 | 0.0 | 0.0 | 0.0 | 0.0 | 0.0 | 0.0 | 0.0 | 0.0 | 0.3 | 0.3 |

Table A-3: Mean abundance of saltmarsh, mangrove and epifaunal invertebrate species recorded within four random quadrats along each transect.

| Species Name | Treatment Transect Common Name | New Saltmarsh 1 | | | | | | | | | | | |
|--|--------------------------------------|-----------------|-----|------|-----|------|-----|------|-----|------|-----|------|-----|
| | | N1-1 | | N1-2 | | N1-3 | | N1-4 | | N1-5 | | N1-6 | |
| | | MEAN | SE | MEAN | SE | MEAN | SE | MEAN | SE | MEAN | SE | MEAN | SE |
| <i>Acacia</i> sp. | unidentified Wattle | 0.0 | 0.0 | 0.0 | 0.0 | 0.0 | 0.0 | 0.0 | 0.0 | 0.0 | 0.0 | 0.0 | 0.0 |
| <i>Aegiceras corniculatum</i> | River Mangrove | 0.0 | 0.0 | 0.0 | 0.0 | 0.0 | 0.0 | 0.0 | 0.0 | 0.0 | 0.0 | 0.0 | 0.0 |
| <i>Atriplex australasica</i> | Green Saltbush | 0.0 | 0.0 | 0.0 | 0.0 | 0.0 | 0.0 | 0.0 | 0.0 | 0.0 | 0.0 | 0.0 | 0.0 |
| <i>Avicennia marina</i> | Grey Mangrove tree | 0.0 | 0.0 | 0.0 | 0.0 | 0.0 | 0.0 | 0.0 | 0.0 | 0.0 | 0.0 | 0.0 | 0.0 |
| <i>Avicennia marina</i> | Grey Mangrove seedling | 0.0 | 0.0 | 0.0 | 0.0 | 0.0 | 0.0 | 0.0 | 0.0 | 0.0 | 0.0 | 0.0 | 0.0 |
| <i>Avicennia marina</i> | Grey Mangrove pneumatophores | 0.0 | 0.0 | 0.0 | 0.0 | 0.0 | 0.0 | 0.0 | 0.0 | 0.0 | 0.0 | 0.0 | 0.0 |
| <i>Bidens pilosa</i> | Farmers Friend | 0.0 | 0.0 | 0.0 | 0.0 | 0.0 | 0.0 | 0.0 | 0.0 | 0.0 | 0.0 | 0.0 | 0.0 |
| <i>Carpobrotus</i> sp. | Pigface | 0.0 | 0.0 | 0.0 | 0.0 | 0.3 | 0.3 | 0.0 | 0.0 | 0.0 | 0.0 | 0.0 | 0.0 |
| <i>Hydrocotyle</i> sp. | Pennywort | 0.0 | 0.0 | 0.0 | 0.0 | 0.0 | 0.0 | 0.0 | 0.0 | 0.0 | 0.0 | 0.0 | 0.0 |
| <i>Isolepis nodosa</i> | Knobby Club-rush | 0.0 | 0.0 | 0.8 | 0.8 | 0.0 | 0.0 | 0.0 | 0.0 | 0.0 | 0.0 | 0.0 | 0.0 |
| <i>Juncus kraussii</i> | Sea Rush | 0.0 | 0.0 | 0.0 | 0.0 | 0.5 | 0.5 | 0.0 | 0.0 | 0.0 | 0.0 | 0.0 | 0.0 |
| <i>Plantago coronopus</i> | Plantain | 0.0 | 0.0 | 0.0 | 0.0 | 0.0 | 0.0 | 0.0 | 0.0 | 0.0 | 0.0 | 0.0 | 0.0 |
| <i>Samolus repens</i> | Creeping Brookweed | 0.0 | 0.0 | 0.0 | 0.0 | 0.0 | 0.0 | 0.0 | 0.0 | 0.0 | 0.0 | 0.0 | 0.0 |
| <i>Sarcocornia quinqueflora</i> | Beaded Glasswort | 9.3 | 4.0 | 5.0 | 2.9 | 3.5 | 2.0 | 7.5 | 1.8 | 9.5 | 3.6 | 7.5 | 4.8 |
| <i>Sarcocornia quinqueflora</i> (Dead) | Dead Beaded Glasswort | 0.0 | 0.0 | 0.0 | 0.0 | 0.0 | 0.0 | 0.0 | 0.0 | 0.0 | 0.0 | 0.0 | 0.0 |
| <i>Sarcocornia quinqueflora</i> (Poor) | Poor Condition Beaded Glasswort | 0.0 | 0.0 | 0.0 | 0.0 | 1.5 | 1.5 | 0.0 | 0.0 | 0.0 | 0.0 | 0.0 | 0.0 |
| <i>Spinifex sericeus</i> | Hairy Spinifex grass | 2.5 | 2.5 | 0.0 | 0.0 | 0.0 | 0.0 | 0.0 | 0.0 | 0.0 | 0.0 | 0.0 | 0.0 |
| <i>Suaeda australis</i> | Seablite | 0.0 | 0.0 | 0.0 | 0.0 | 0.0 | 0.0 | 0.8 | 0.5 | 0.3 | 0.3 | 0.0 | 0.0 |
| <i>Suaeda australis</i> (Dead) | Dead Seablite | 0.0 | 0.0 | 0.0 | 0.0 | 0.0 | 0.0 | 0.0 | 0.0 | 0.0 | 0.0 | 0.0 | 0.0 |
| <i>Tetragonia tetragonioides</i> | New Zealand Spinach | 0.0 | 0.0 | 0.0 | 0.0 | 0.0 | 0.0 | 0.0 | 0.0 | 0.0 | 0.0 | 0.0 | 0.0 |
| unidentified plant | unidentified plant | 0.0 | 0.0 | 0.0 | 0.0 | 0.0 | 0.0 | 0.0 | 0.0 | 0.0 | 0.0 | 0.0 | 0.0 |
| Grapsidae crab | unidentified grapsid crab | 0.0 | 0.0 | 0.0 | 0.0 | 0.0 | 0.0 | 0.0 | 0.0 | 0.0 | 0.0 | 0.3 | 0.3 |
| crab hole | crab hole | 2.3 | 2.3 | 1.8 | 1.8 | 4.5 | 3.9 | 4.0 | 4.0 | 0.3 | 0.3 | 1.0 | 0.7 |
| Amphipoda | unidentified amphipod | 0.0 | 0.0 | 0.0 | 0.0 | 0.0 | 0.0 | 0.0 | 0.0 | 0.0 | 0.0 | 0.0 | 0.0 |
| <i>Onchidium damelli</i> | Air breathing sea slug | 0.0 | 0.0 | 0.0 | 0.0 | 0.0 | 0.0 | 0.0 | 0.0 | 0.0 | 0.0 | 0.0 | 0.0 |
| unidentified gastropod | Unidentified gastropod | 0.0 | 0.0 | 0.0 | 0.0 | 0.0 | 0.0 | 0.0 | 0.0 | 0.0 | 0.0 | 0.0 | 0.0 |
| <i>Bembicium auratum</i> | Estuarine periwinkle | 0.0 | 0.0 | 0.0 | 0.0 | 0.0 | 0.0 | 0.0 | 0.0 | 0.0 | 0.0 | 0.0 | 0.0 |
| <i>Bembicium</i> sp. | Unidentified periwinkle | 0.0 | 0.0 | 0.0 | 0.0 | 0.0 | 0.0 | 0.0 | 0.0 | 0.0 | 0.0 | 0.0 | 0.0 |
| <i>Littorina scabra</i> | Rough periwinkle | 0.0 | 0.0 | 0.0 | 0.0 | 0.0 | 0.0 | 0.0 | 0.0 | 0.0 | 0.0 | 1.5 | 1.0 |
| <i>Littorina</i> sp. | unidentified periwinkle | 0.0 | 0.0 | 0.0 | 0.0 | 0.0 | 0.0 | 0.0 | 0.0 | 0.0 | 0.0 | 0.0 | 0.0 |
| <i>Ophicardelus ornatus</i> | Mangrove air-breather | 0.0 | 0.0 | 0.0 | 0.0 | 0.0 | 0.0 | 0.0 | 0.0 | 0.0 | 0.0 | 0.0 | 0.0 |
| <i>Salinator fragilis</i> | Fragile air-breather | 0.0 | 0.0 | 0.0 | 0.0 | 0.0 | 0.0 | 0.0 | 0.0 | 0.0 | 0.0 | 0.0 | 0.0 |
| <i>Calthotia fragum</i> | Top shell | 0.0 | 0.0 | 0.0 | 0.0 | 0.0 | 0.0 | 0.0 | 0.0 | 0.0 | 0.0 | 0.0 | 0.0 |
| Batillariidae | unidentified whelk | 0.0 | 0.0 | 0.0 | 0.0 | 0.0 | 0.0 | 0.0 | 0.0 | 0.0 | 0.0 | 0.0 | 0.0 |
| Mytilidae | unidentified mussel | 0.0 | 0.0 | 0.0 | 0.0 | 0.0 | 0.0 | 0.0 | 0.0 | 0.0 | 0.0 | 0.0 | 0.0 |

continued...

Table A-3: continued

| Species Name | Transect Common Name | N2-9 | | N2-10 | | N2-11 | | N2-12 | | N2-13 | | N2-21 | |
|--|---------------------------------|------|-----|-------|-----|-------|-----|-------|-----|-------|-----|-------|-----|
| | | MEAN | SE | MEAN | SE | MEAN | SE | MEAN | SE | MEAN | SE | MEAN | SE |
| <i>Acacia</i> sp. | unidentified Wattle | 0.0 | 0.0 | 0.0 | 0.0 | 0.0 | 0.0 | 0.0 | 0.0 | 0.0 | 0.0 | 0.0 | 0.0 |
| <i>Aegiceras corniculatum</i> | River Mangrove | 0.0 | 0.0 | 0.0 | 0.0 | 0.0 | 0.0 | 0.0 | 0.0 | 0.0 | 0.0 | 0.0 | 0.0 |
| <i>Atriplex australasica</i> | Green Saltbush | 0.0 | 0.0 | 0.0 | 0.0 | 0.0 | 0.0 | 0.0 | 0.0 | 0.0 | 0.0 | 0.0 | 0.0 |
| <i>Avicennia marina</i> | Grey Mangrove tree | 0.0 | 0.0 | 0.0 | 0.0 | 0.0 | 0.0 | 0.0 | 0.0 | 0.0 | 0.0 | 0.0 | 0.0 |
| <i>Avicennia marina</i> | Grey Mangrove seedling | 0.0 | 0.0 | 0.0 | 0.0 | 0.0 | 0.0 | 0.0 | 0.0 | 0.0 | 0.0 | 0.0 | 0.0 |
| <i>Avicennia marina</i> | Grey Mangrove pneumatophores | 0.0 | 0.0 | 0.0 | 0.0 | 0.0 | 0.0 | 0.0 | 0.0 | 0.0 | 0.0 | 0.0 | 0.0 |
| <i>Bidens pilosa</i> | Farmers Friend | 0.0 | 0.0 | 0.0 | 0.0 | 0.0 | 0.0 | 0.0 | 0.0 | 0.0 | 0.0 | 0.0 | 0.0 |
| <i>Carpobrotus</i> sp. | Pigface | 0.0 | 0.0 | 0.0 | 0.0 | 0.0 | 0.0 | 0.0 | 0.0 | 0.0 | 0.0 | 0.0 | 0.0 |
| <i>Hydrocotyle</i> sp. | Pennywort | 0.0 | 0.0 | 0.0 | 0.0 | 0.0 | 0.0 | 0.0 | 0.0 | 0.0 | 0.0 | 0.0 | 0.0 |
| <i>Isolepis nodosa</i> | Knobby Club-rush | 0.0 | 0.0 | 0.0 | 0.0 | 0.0 | 0.0 | 0.0 | 0.0 | 0.0 | 0.0 | 0.0 | 0.0 |
| <i>Juncus kraussii</i> | Sea Rush | 0.0 | 0.0 | 0.0 | 0.0 | 1.8 | 1.0 | 0.0 | 0.0 | 0.0 | 0.0 | 0.0 | 0.0 |
| <i>Plantago coronopus</i> | Plantain | 0.0 | 0.0 | 0.0 | 0.0 | 0.0 | 0.0 | 0.0 | 0.0 | 0.0 | 0.0 | 0.0 | 0.0 |
| <i>Samolus repens</i> | Creeping Brookweed | 0.0 | 0.0 | 0.0 | 0.0 | 0.0 | 0.0 | 0.0 | 0.0 | 0.0 | 0.0 | 0.0 | 0.0 |
| <i>Sarcocornia quinqueflora</i> | Beaded Glasswort | 17.3 | 7.4 | 15.5 | 5.5 | 7.3 | 2.3 | 8.5 | 3.0 | 22.5 | 6.0 | 1.5 | 1.5 |
| <i>Sarcocornia quinqueflora</i> (Dead) | Dead Beaded Glasswort | 0.0 | 0.0 | 0.0 | 0.0 | 0.0 | 0.0 | 0.0 | 0.0 | 0.0 | 0.0 | 0.0 | 0.0 |
| <i>Sarcocornia quinqueflora</i> (Poor) | Poor Condition Beaded Glasswort | 0.0 | 0.0 | 0.0 | 0.0 | 0.0 | 0.0 | 0.0 | 0.0 | 0.0 | 0.0 | 1.0 | 1.0 |
| <i>Spinifex sericeus</i> | Hairy Spinifex grass | 0.0 | 0.0 | 0.0 | 0.0 | 0.0 | 0.0 | 0.0 | 0.0 | 0.0 | 0.0 | 0.0 | 0.0 |
| <i>Suaeda australis</i> | Seablite | 0.0 | 0.0 | 0.3 | 0.3 | 0.0 | 0.0 | 0.5 | 0.3 | 0.0 | 0.0 | 0.0 | 0.0 |
| <i>Suaeda australis</i> (Dead) | Dead Seablite | 0.0 | 0.0 | 0.0 | 0.0 | 0.0 | 0.0 | 0.0 | 0.0 | 0.0 | 0.0 | 0.0 | 0.0 |
| <i>Tetragonia tetragonioides</i> | New Zealand Spinach | 0.0 | 0.0 | 0.0 | 0.0 | 0.0 | 0.0 | 0.0 | 0.0 | 0.0 | 0.0 | 0.0 | 0.0 |
| unidentified plant | unidentified plant | 0.0 | 0.0 | 0.0 | 0.0 | 0.0 | 0.0 | 0.0 | 0.0 | 0.0 | 0.0 | 0.0 | 0.0 |
| Grapsidae crab | unidentified grapsid crab | 0.0 | 0.0 | 0.0 | 0.0 | 0.0 | 0.0 | 0.0 | 0.0 | 0.8 | 0.5 | 0.0 | 0.0 |
| crab hole | crab hole | 2.3 | 2.3 | 2.3 | 1.4 | 3.0 | 3.0 | 1.3 | 1.3 | 4.5 | 1.8 | 0.0 | 0.0 |
| <i>Amphipoda</i> | unidentified amphipod | 0.0 | 0.0 | 0.0 | 0.0 | 0.0 | 0.0 | 0.0 | 0.0 | 0.0 | 0.0 | 0.0 | 0.0 |
| <i>Onchidium damelli</i> | Air breathing sea slug | 0.0 | 0.0 | 0.0 | 0.0 | 0.0 | 0.0 | 1.3 | 1.3 | 0.0 | 0.0 | 0.0 | 0.0 |
| unidentified gastropod | Unidentified gastropod | 0.0 | 0.0 | 0.0 | 0.0 | 0.0 | 0.0 | 0.0 | 0.0 | 0.0 | 0.0 | 0.0 | 0.0 |
| <i>Bembicium auratum</i> | Estuarine periwinkle | 0.0 | 0.0 | 0.0 | 0.0 | 0.0 | 0.0 | 0.0 | 0.0 | 3.3 | 1.9 | 0.0 | 0.0 |
| <i>Bembicium</i> sp | Unidentified periwinkle | 0.0 | 0.0 | 0.0 | 0.0 | 0.0 | 0.0 | 0.0 | 0.0 | 0.0 | 0.0 | 0.0 | 0.0 |
| <i>Littorina scabra</i> | Rough periwinkle | 0.0 | 0.0 | 0.0 | 0.0 | 0.0 | 0.0 | 8.3 | 5.4 | 6.8 | 3.9 | 0.0 | 0.0 |
| <i>Littorina</i> sp. | unidentified periwinkle | 0.0 | 0.0 | 0.0 | 0.0 | 0.0 | 0.0 | 0.0 | 0.0 | 0.0 | 0.0 | 0.0 | 0.0 |
| <i>Ophicardelus ornatus</i> | Mangrove air-breather | 0.0 | 0.0 | 0.0 | 0.0 | 0.0 | 0.0 | 0.0 | 0.0 | 9.8 | 4.1 | 0.0 | 0.0 |
| <i>Salinator fragilis</i> | Fragile air-breather | 0.0 | 0.0 | 0.0 | 0.0 | 0.0 | 0.0 | 0.0 | 0.0 | 0.0 | 0.0 | 0.0 | 0.0 |
| <i>Calthotia fragum</i> | Top shell | 0.0 | 0.0 | 0.0 | 0.0 | 0.0 | 0.0 | 0.0 | 0.0 | 0.0 | 0.0 | 0.0 | 0.0 |
| <i>Batillariidae</i> | unidentified whelk | 0.0 | 0.0 | 0.0 | 0.0 | 0.0 | 0.0 | 0.0 | 0.0 | 0.0 | 0.0 | 0.0 | 0.0 |
| <i>Mytilidae</i> | unidentified mussel | 0.0 | 0.0 | 0.0 | 0.0 | 0.0 | 0.0 | 0.0 | 0.0 | 0.0 | 0.0 | 0.0 | 0.0 |

continued...

Table A-3: continued

| Species Name | Treatment Transect Common Name | Transplanted Saltmarsh | | | | | | Retained Saltmarsh 1 | | | |
|--|--------------------------------------|------------------------|-----|-------|-----|-------|-----|----------------------|-----|-------|-----|
| | | TR-8 | | TR-17 | | TR-18 | | R1-7 | | R1-14 | |
| | | MEAN | SE | MEAN | SE | MEAN | SE | MEAN | SE | MEAN | SE |
| <i>Acacia</i> sp. | unidentified Wattle | 0.0 | 0.0 | 0.0 | 0.0 | 0.0 | 0.0 | 0.0 | 0.0 | 0.0 | 0.0 |
| <i>Aegiceras corniculatum</i> | River Mangrove | 0.0 | 0.0 | 0.0 | 0.0 | 0.0 | 0.0 | 0.0 | 0.0 | 0.0 | 0.0 |
| <i>Atriplex australasica</i> | Green Saltbush | 0.0 | 0.0 | 0.0 | 0.0 | 0.0 | 0.0 | 0.0 | 0.0 | 0.0 | 0.0 |
| <i>Avicennia marina</i> | Grey Mangrove tree | 0.0 | 0.0 | 0.0 | 0.0 | 0.0 | 0.0 | 0.0 | 0.0 | 0.0 | 0.0 |
| <i>Avicennia marina</i> | Grey Mangrove seedling | 0.0 | 0.0 | 0.0 | 0.0 | 0.0 | 0.0 | 0.0 | 0.0 | 0.0 | 0.0 |
| <i>Avicennia marina</i> | Grey Mangrove pneumatophores | 0.0 | 0.0 | 0.0 | 0.0 | 0.0 | 0.0 | 0.0 | 0.0 | 0.0 | 0.0 |
| <i>Bidens pilosa</i> | Farmers Friend | 0.0 | 0.0 | 0.5 | 0.5 | 0.0 | 0.0 | 0.0 | 0.0 | 0.0 | 0.0 |
| <i>Carpobrotus</i> sp. | Pigface | 0.0 | 0.0 | 0.0 | 0.0 | 0.0 | 0.0 | 0.0 | 0.0 | 0.0 | 0.0 |
| <i>Hydrocotyle</i> sp. | Pennywort | 0.0 | 0.0 | 0.0 | 0.0 | 0.0 | 0.0 | 0.0 | 0.0 | 0.0 | 0.0 |
| <i>Isolepis nodosa</i> | Knobby Club-rush | 0.0 | 0.0 | 0.0 | 0.0 | 0.0 | 0.0 | 0.0 | 0.0 | 0.0 | 0.0 |
| <i>Juncus kraussii</i> | Sea Rush | 0.8 | 0.8 | 0.0 | 0.0 | 0.0 | 0.0 | 0.0 | 0.0 | 0.0 | 0.0 |
| <i>Plantago coronopus</i> | Plantain | 0.0 | 0.0 | 0.0 | 0.0 | 0.0 | 0.0 | 0.0 | 0.0 | 0.0 | 0.0 |
| <i>Samolus repens</i> | Creeping Brookweed | 0.0 | 0.0 | 0.0 | 0.0 | 0.0 | 0.0 | 0.0 | 0.0 | 0.0 | 0.0 |
| <i>Sarcocornia quinqueflora</i> | Beaded Glasswort | 0.0 | 0.0 | 0.0 | 0.0 | 0.0 | 0.0 | 7.3 | 4.3 | 2.5 | 0.9 |
| <i>Sarcocornia quinqueflora</i> (Dead) | Dead Beaded Glasswort | 0.0 | 0.0 | 0.0 | 0.0 | 0.0 | 0.0 | 0.0 | 0.0 | 0.0 | 0.0 |
| <i>Sarcocornia quinqueflora</i> (Poor) | Poor Condition Beaded Glasswort | 0.0 | 0.0 | 0.0 | 0.0 | 0.0 | 0.0 | 0.0 | 0.0 | 0.0 | 0.0 |
| <i>Spinifex sericeus</i> | Hairy Spinifex grass | 0.0 | 0.0 | 0.0 | 0.0 | 0.0 | 0.0 | 0.3 | 0.3 | 1.0 | 1.0 |
| <i>Suaeda australis</i> | Seablite | 1.0 | 0.6 | 1.0 | 0.7 | 0.0 | 0.0 | 1.5 | 0.5 | 0.0 | 0.0 |
| <i>Suaeda australis</i> (Dead) | Dead Seablite | 0.0 | 0.0 | 0.0 | 0.0 | 0.0 | 0.0 | 0.0 | 0.0 | 0.0 | 0.0 |
| <i>Tetragonia tetragonioides</i> | New Zealand Spinach | 0.0 | 0.0 | 0.0 | 0.0 | 0.0 | 0.0 | 0.0 | 0.0 | 0.0 | 0.0 |
| unidentified plant | unidentified plant | 0.0 | 0.0 | 0.0 | 0.0 | 0.0 | 0.0 | 0.0 | 0.0 | 0.0 | 0.0 |
| Grapsidae crab | unidentified grapsid crab | 0.0 | 0.0 | 0.0 | 0.0 | 0.0 | 0.0 | 0.0 | 0.0 | 0.0 | 0.0 |
| crab hole | crab hole | 5.8 | 0.6 | 2.5 | 1.5 | 4.3 | 2.1 | 0.5 | 0.5 | 0.0 | 0.0 |
| Amphipoda | unidentified amphipod | 0.0 | 0.0 | 0.0 | 0.0 | 0.0 | 0.0 | 0.0 | 0.0 | 0.0 | 0.0 |
| <i>Onchidium damelli</i> | Air breathing sea slug | 0.0 | 0.0 | 0.0 | 0.0 | 0.0 | 0.0 | 0.0 | 0.0 | 0.0 | 0.0 |
| unidentified gastropod | Unidentified gastropod | 0.0 | 0.0 | 0.0 | 0.0 | 0.0 | 0.0 | 0.0 | 0.0 | 0.0 | 0.0 |
| <i>Bembicium auratum</i> | Estuarine periwinkle | 0.0 | 0.0 | 0.0 | 0.0 | 0.0 | 0.0 | 0.0 | 0.0 | 0.0 | 0.0 |
| <i>Bembicium</i> sp. | Unidentified periwinkle | 0.0 | 0.0 | 0.0 | 0.0 | 0.0 | 0.0 | 0.0 | 0.0 | 0.0 | 0.0 |
| <i>Littorina scabra</i> | Rough periwinkle | 9.0 | 8.7 | 0.0 | 0.0 | 0.0 | 0.0 | 0.0 | 0.0 | 0.0 | 0.0 |
| <i>Littorina</i> sp. | unidentified periwinkle | 0.0 | 0.0 | 0.0 | 0.0 | 0.0 | 0.0 | 0.0 | 0.0 | 0.0 | 0.0 |
| <i>Ophicardelus ornatus</i> | Mangrove air-breather | 2.0 | 2.0 | 0.0 | 0.0 | 0.0 | 0.0 | 0.0 | 0.0 | 0.0 | 0.0 |
| <i>Salinator fragilis</i> | Fragile air-breather | 0.0 | 0.0 | 0.0 | 0.0 | 0.0 | 0.0 | 0.0 | 0.0 | 0.0 | 0.0 |
| <i>Calthotia fragum</i> | Top shell | 0.0 | 0.0 | 0.0 | 0.0 | 0.0 | 0.0 | 0.0 | 0.0 | 0.0 | 0.0 |
| Batillariidae | unidentified whelk | 0.0 | 0.0 | 0.0 | 0.0 | 0.0 | 0.0 | 0.0 | 0.0 | 0.0 | 0.0 |
| Mytilidae | unidentified mussel | 0.0 | 0.0 | 0.0 | 0.0 | 0.0 | 0.0 | 0.0 | 0.0 | 0.0 | 0.0 |

continued...

Table A-3: continued

| Species Name | Transect Common Name | R2-20 | | R2-22 | | A2-15 | | A2-16 | | A2-19 | |
|--|---------------------------------|-------|------|-------|-----|-------|-----|-------|-----|-------|-----|
| | | MEAN | SE | MEAN | SE | MEAN | SE | MEAN | SE | MEAN | SE |
| <i>Acacia</i> sp. | unidentified Wattle | 0.0 | 0.0 | 0.0 | 0.0 | 0.0 | 0.0 | 0.0 | 0.0 | 0.0 | 0.0 |
| <i>Aegiceras corniculatum</i> | River Mangrove | 0.0 | 0.0 | 0.0 | 0.0 | 0.0 | 0.0 | 0.0 | 0.0 | 0.0 | 0.0 |
| <i>Atriplex australasica</i> | Green Saltbush | 0.0 | 0.0 | 0.0 | 0.0 | 0.0 | 0.0 | 0.0 | 0.0 | 0.0 | 0.0 |
| <i>Avicennia marina</i> | Grey Mangrove tree | 0.0 | 0.0 | 0.0 | 0.0 | 0.0 | 0.0 | 0.0 | 0.0 | 0.0 | 0.0 |
| <i>Avicennia marina</i> | Grey Mangrove seedling | 0.0 | 0.0 | 0.0 | 0.0 | 0.0 | 0.0 | 0.0 | 0.0 | 0.0 | 0.0 |
| <i>Avicennia marina</i> | Grey Mangrove pneumatophores | 0.0 | 0.0 | 0.0 | 0.0 | 0.0 | 0.0 | 0.0 | 0.0 | 0.0 | 0.0 |
| <i>Bidens pilosa</i> | Farmers Friend | 0.0 | 0.0 | 0.0 | 0.0 | 0.0 | 0.0 | 0.0 | 0.0 | 0.0 | 0.0 |
| <i>Carpobrotus</i> sp. | Pigface | 0.0 | 0.0 | 0.0 | 0.0 | 0.0 | 0.0 | 0.0 | 0.0 | 0.0 | 0.0 |
| <i>Hydrocotyle</i> sp. | Pennywort | 0.0 | 0.0 | 0.0 | 0.0 | 0.0 | 0.0 | 0.0 | 0.0 | 0.0 | 0.0 |
| <i>Isolepis nodosa</i> | Knobby Club-rush | 0.0 | 0.0 | 0.0 | 0.0 | 0.0 | 0.0 | 0.0 | 0.0 | 0.0 | 0.0 |
| <i>Juncus kraussii</i> | Sea Rush | 0.3 | 0.3 | 0.0 | 0.0 | 0.0 | 0.0 | 0.0 | 0.0 | 0.0 | 0.0 |
| <i>Plantago coronopus</i> | Plantain | 0.0 | 0.0 | 0.0 | 0.0 | 0.0 | 0.0 | 0.0 | 0.0 | 0.0 | 0.0 |
| <i>Samolus repens</i> | Creeping Brookweed | 0.0 | 0.0 | 0.0 | 0.0 | 0.0 | 0.0 | 0.0 | 0.0 | 0.0 | 0.0 |
| <i>Sarcocornia quinqueflora</i> | Beaded Glasswort | 3.0 | 3.0 | 3.8 | 3.8 | 0.0 | 0.0 | 0.0 | 0.0 | 0.0 | 0.0 |
| <i>Sarcocornia quinqueflora</i> (Dead) | Dead Beaded Glasswort | 0.0 | 0.0 | 0.0 | 0.0 | 0.0 | 0.0 | 0.0 | 0.0 | 0.0 | 0.0 |
| <i>Sarcocornia quinqueflora</i> (Poor) | Poor Condition Beaded Glasswort | 0.0 | 0.0 | 1.0 | 0.7 | 0.0 | 0.0 | 0.0 | 0.0 | 0.0 | 0.0 |
| <i>Spinifex sericeus</i> | Hairy Spinifex grass | 0.0 | 0.0 | 0.0 | 0.0 | 0.0 | 0.0 | 0.0 | 0.0 | 0.0 | 0.0 |
| <i>Suaeda australis</i> | Seablite | 2.5 | 0.6 | 0.3 | 0.3 | 1.0 | 0.6 | 0.0 | 0.0 | 1.0 | 1.0 |
| <i>Suaeda australis</i> (Dead) | Dead Seablite | 0.0 | 0.0 | 0.0 | 0.0 | 0.0 | 0.0 | 0.0 | 0.0 | 0.0 | 0.0 |
| <i>Tetragonia tetragonioides</i> | New Zealand Spinach | 0.8 | 0.8 | 0.0 | 0.0 | 0.0 | 0.0 | 0.0 | 0.0 | 0.0 | 0.0 |
| unidentified plant | unidentified plant | 0.0 | 0.0 | 0.0 | 0.0 | 0.0 | 0.0 | 2.5 | 1.0 | 0.0 | 0.0 |
| Grapsidae crab | unidentified grapsid crab | 0.3 | 0.3 | 0.0 | 0.0 | 0.3 | 0.3 | 0.0 | 0.0 | 2.3 | 1.9 |
| crab hole | crab hole | 5.0 | 2.0 | 11.3 | 2.0 | 6.8 | 2.8 | 0.0 | 0.0 | 6.3 | 3.8 |
| <i>Amphipoda</i> | unidentified amphipod | 0.0 | 0.0 | 0.0 | 0.0 | 0.0 | 0.0 | 0.0 | 0.0 | 0.0 | 0.0 |
| <i>Onchidium damelli</i> | Air breathing sea slug | 0.0 | 0.0 | 0.0 | 0.0 | 0.0 | 0.0 | 0.0 | 0.0 | 0.0 | 0.0 |
| unidentified gastropod | Unidentified gastropod | 0.0 | 0.0 | 0.0 | 0.0 | 0.0 | 0.0 | 0.0 | 0.0 | 0.0 | 0.0 |
| <i>Bembicium auratum</i> | Estuarine periwinkle | 0.0 | 0.0 | 0.0 | 0.0 | 0.0 | 0.0 | 0.0 | 0.0 | 1.3 | 0.8 |
| <i>Bembicium</i> sp | Unidentified periwinkle | 0.0 | 0.0 | 0.0 | 0.0 | 0.0 | 0.0 | 0.0 | 0.0 | 0.0 | 0.0 |
| <i>Littorina scabra</i> | Rough periwinkle | 15.0 | 15.0 | 0.0 | 0.0 | 0.0 | 0.0 | 0.0 | 0.0 | 6.0 | 3.8 |
| <i>Littorina</i> sp. | unidentified periwinkle | 0.0 | 0.0 | 0.0 | 0.0 | 0.0 | 0.0 | 0.0 | 0.0 | 0.0 | 0.0 |
| <i>Ophicardelus ornatus</i> | Mangrove air-breather | 1.5 | 1.5 | 0.0 | 0.0 | 0.0 | 0.0 | 0.0 | 0.0 | 1.8 | 1.2 |
| <i>Salinator fragilis</i> | Fragile air-breather | 0.0 | 0.0 | 0.0 | 0.0 | 0.0 | 0.0 | 0.0 | 0.0 | 0.0 | 0.0 |
| <i>Calthotia fragum</i> | Top shell | 0.0 | 0.0 | 0.0 | 0.0 | 0.0 | 0.0 | 0.0 | 0.0 | 0.0 | 0.0 |
| <i>Batillariidae</i> | unidentified whelk | 0.0 | 0.0 | 0.0 | 0.0 | 0.0 | 0.0 | 0.0 | 0.0 | 0.0 | 0.0 |
| <i>Mytilidae</i> | unidentified mussel | 0.0 | 0.0 | 0.0 | 0.0 | 0.0 | 0.0 | 0.0 | 0.0 | 0.0 | 0.0 |

continued...

Table A-3: continued

| Species Name | Treatment Transect Common Name | Reference Quibray Bay 1 | | | | | | Reference Quibray Bay 2 | | | | | |
|--|--------------------------------------|-------------------------|------|------|------|------|-----|-------------------------|------|------|------|------|-----|
| | | Q1-1 | | Q1-2 | | Q1-3 | | Q2-4 | | Q2-5 | | Q2-6 | |
| | | MEAN | SE | MEAN | SE | MEAN | SE | MEAN | SE | MEAN | SE | MEAN | SE |
| <i>Acacia</i> sp. | unidentified Wattle | 0.0 | 0.0 | 0.0 | 0.0 | 0.0 | 0.0 | 0.0 | 0.0 | 0.0 | 0.0 | 0.0 | 0.0 |
| <i>Aegiceras corniculatum</i> | River Mangrove | 0.0 | 0.0 | 0.0 | 0.0 | 0.0 | 0.0 | 0.0 | 0.0 | 0.0 | 0.0 | 0.0 | 0.0 |
| <i>Atriplex australasica</i> | Green Saltbush | 0.0 | 0.0 | 0.0 | 0.0 | 0.0 | 0.0 | 0.0 | 0.0 | 0.0 | 0.0 | 0.0 | 0.0 |
| <i>Avicennia marina</i> | Grey Mangrove tree | 0.0 | 0.0 | 0.0 | 0.0 | 0.0 | 0.0 | 0.0 | 0.0 | 0.0 | 0.0 | 0.0 | 0.0 |
| <i>Avicennia marina</i> | Grey Mangrove seedling | 0.0 | 0.0 | 0.0 | 0.0 | 0.0 | 0.0 | 9.5 | 9.5 | 0.0 | 0.0 | 0.0 | 0.0 |
| <i>Avicennia marina</i> | Grey Mangrove pneumatophores | 0.0 | 0.0 | 0.0 | 0.0 | 0.0 | 0.0 | 4.3 | 4.3 | 0.0 | 0.0 | 0.0 | 0.0 |
| <i>Bidens pilosa</i> | Farmers Friend | 0.0 | 0.0 | 0.0 | 0.0 | 0.0 | 0.0 | 0.0 | 0.0 | 0.0 | 0.0 | 0.0 | 0.0 |
| <i>Carpobrotus</i> sp. | Pigface | 0.0 | 0.0 | 0.0 | 0.0 | 0.0 | 0.0 | 0.0 | 0.0 | 0.0 | 0.0 | 0.0 | 0.0 |
| <i>Hydrocotyle</i> sp. | Pennywort | 20.0 | 20.0 | 28.5 | 18.9 | 0.0 | 0.0 | 0.0 | 0.0 | 0.0 | 0.0 | 0.0 | 0.0 |
| <i>Isolepis nodosa</i> | Knobby Club-rush | 0.0 | 0.0 | 0.0 | 0.0 | 0.0 | 0.0 | 0.0 | 0.0 | 0.0 | 0.0 | 0.0 | 0.0 |
| <i>Juncus kraussii</i> | Sea Rush | 0.0 | 0.0 | 0.0 | 0.0 | 0.0 | 0.0 | 0.0 | 0.0 | 0.0 | 0.0 | 0.0 | 0.0 |
| <i>Plantago coronopus</i> | Plantain | 0.0 | 0.0 | 0.0 | 0.0 | 0.0 | 0.0 | 0.0 | 0.0 | 0.0 | 0.0 | 0.0 | 0.0 |
| <i>Samolus repens</i> | Creeping Brookweed | 0.0 | 0.0 | 0.0 | 0.0 | 0.0 | 0.0 | 0.0 | 0.0 | 0.0 | 0.0 | 0.0 | 0.0 |
| <i>Sarcocornia quinqueflora</i> | Beaded Glasswort | 19.5 | 7.1 | 17.5 | 10.2 | 16.3 | 6.6 | 17.5 | 10.7 | 30.3 | 11.3 | 16.0 | 9.1 |
| <i>Sarcocornia quinqueflora</i> (Dead) | Dead Beaded Glasswort | 0.0 | 0.0 | 0.0 | 0.0 | 0.0 | 0.0 | 0.0 | 0.0 | 0.0 | 0.0 | 0.0 | 0.0 |
| <i>Sarcocornia quinqueflora</i> (Poor) | Poor Condition Beaded Glasswort | 0.0 | 0.0 | 0.0 | 0.0 | 0.0 | 0.0 | 0.0 | 0.0 | 0.0 | 0.0 | 0.0 | 0.0 |
| <i>Spinifex sericeus</i> | Hairy Spinifex grass | 0.0 | 0.0 | 0.0 | 0.0 | 0.0 | 0.0 | 0.0 | 0.0 | 0.0 | 0.0 | 0.0 | 0.0 |
| <i>Suaeda australis</i> | Seablite | 1.3 | 0.9 | 0.0 | 0.0 | 2.5 | 1.4 | 0.5 | 0.5 | 0.0 | 0.0 | 0.0 | 0.0 |
| <i>Suaeda australis</i> (Dead) | Dead Seablite | 0.0 | 0.0 | 0.0 | 0.0 | 0.0 | 0.0 | 0.0 | 0.0 | 0.0 | 0.0 | 0.0 | 0.0 |
| <i>Tetragonia tetragonioides</i> | New Zealand Spinach | 0.0 | 0.0 | 0.0 | 0.0 | 0.0 | 0.0 | 0.0 | 0.0 | 0.0 | 0.0 | 0.0 | 0.0 |
| unidentified plant | unidentified plant | 0.0 | 0.0 | 0.0 | 0.0 | 0.0 | 0.0 | 0.0 | 0.0 | 0.0 | 0.0 | 0.0 | 0.0 |
| Grapsidae crab | unidentified grapsid crab | 0.3 | 0.3 | 0.3 | 0.3 | 0.0 | 0.0 | 0.0 | 0.0 | 0.0 | 0.0 | 0.0 | 0.0 |
| crab hole | crab hole | 10.5 | 7.1 | 9.3 | 6.4 | 5.0 | 2.5 | 1.0 | 0.6 | 6.0 | 3.5 | 0.8 | 0.8 |
| <i>Amphipoda</i> | unidentified amphipod | 0.0 | 0.0 | 0.0 | 0.0 | 0.0 | 0.0 | 0.0 | 0.0 | 0.0 | 0.0 | 0.0 | 0.0 |
| <i>Onchidium damelli</i> | Air breathing sea slug | 0.0 | 0.0 | 0.0 | 0.0 | 0.0 | 0.0 | 0.0 | 0.0 | 0.0 | 0.0 | 0.0 | 0.0 |
| unidentified gastropod | Unidentified gastropod | 1.0 | 1.0 | 0.0 | 0.0 | 0.0 | 0.0 | 0.0 | 0.0 | 0.0 | 0.0 | 0.0 | 0.0 |
| <i>Bembicium auratum</i> | Estuarine periwinkle | 3.0 | 1.2 | 0.3 | 0.3 | 0.0 | 0.0 | 1.5 | 1.5 | 0.0 | 0.0 | 0.0 | 0.0 |
| <i>Bembicium</i> sp | Unidentified periwinkle | 0.5 | 0.5 | 0.0 | 0.0 | 0.0 | 0.0 | 0.0 | 0.0 | 0.0 | 0.0 | 0.0 | 0.0 |
| <i>Littorina scabra</i> | Rough periwinkle | 3.8 | 2.4 | 1.0 | 1.0 | 0.5 | 0.5 | 0.0 | 0.0 | 0.0 | 0.0 | 0.0 | 0.0 |
| <i>Littorina</i> sp. | unidentified periwinkle | 0.0 | 0.0 | 0.0 | 0.0 | 0.0 | 0.0 | 0.0 | 0.0 | 0.0 | 0.0 | 0.0 | 0.0 |
| <i>Ophicardelus ornatus</i> | Mangrove air-breather | 11.3 | 6.6 | 3.0 | 1.9 | 5.0 | 2.5 | 0.0 | 0.0 | 0.3 | 0.3 | 0.0 | 0.0 |
| <i>Salinator fragilis</i> | Fragile air-breather | 0.0 | 0.0 | 0.0 | 0.0 | 0.0 | 0.0 | 0.0 | 0.0 | 0.0 | 0.0 | 0.0 | 0.0 |
| <i>Caltholotia fragum</i> | Top shell | 0.0 | 0.0 | 0.0 | 0.0 | 0.0 | 0.0 | 0.0 | 0.0 | 0.0 | 0.0 | 0.0 | 0.0 |
| <i>Batillariidae</i> | unidentified whelk | 0.0 | 0.0 | 0.0 | 0.0 | 0.0 | 0.0 | 0.0 | 0.0 | 0.0 | 0.0 | 0.0 | 0.0 |
| <i>Mytilidae</i> | unidentified mussel | 0.0 | 0.0 | 0.0 | 0.0 | 0.0 | 0.0 | 0.0 | 0.0 | 0.0 | 0.0 | 0.0 | 0.0 |

continued...

Table A-3: continued

| Species Name | Treatment Transect Common Name | Reference Woolooware Bay 1 | | | | | | Reference Woolooware Bay 2 | | | | | |
|--|--------------------------------------|----------------------------|------|------|-----|------|-----|----------------------------|-----|------|-----|------|-----|
| | | W1-1 | | W1-2 | | W1-3 | | W2-4 | | W2-5 | | W2-6 | |
| | | MEAN | SE | MEAN | SE | MEAN | SE | MEAN | SE | MEAN | SE | MEAN | SE |
| <i>Acacia</i> sp. | unidentified Wattle | 0.0 | 0.0 | 0.0 | 0.0 | 0.0 | 0.0 | 0.0 | 0.0 | 0.0 | 0.0 | 0.0 | 0.0 |
| <i>Aegiceras corniculatum</i> | River Mangrove | 0.0 | 0.0 | 0.0 | 0.0 | 0.0 | 0.0 | 0.0 | 0.0 | 0.0 | 0.0 | 0.0 | 0.0 |
| <i>Atriplex australasica</i> | Green Saltbush | 0.0 | 0.0 | 0.0 | 0.0 | 0.0 | 0.0 | 0.0 | 0.0 | 0.0 | 0.0 | 0.0 | 0.0 |
| <i>Avicennia marina</i> | Grey Mangrove tree | 0.0 | 0.0 | 0.0 | 0.0 | 0.0 | 0.0 | 0.0 | 0.0 | 0.0 | 0.0 | 0.0 | 0.0 |
| <i>Avicennia marina</i> | Grey Mangrove seedling | 0.0 | 0.0 | 0.0 | 0.0 | 0.0 | 0.0 | 0.0 | 0.0 | 0.0 | 0.0 | 0.0 | 0.0 |
| <i>Avicennia marina</i> | Grey Mangrove pneumatophores | 0.0 | 0.0 | 0.0 | 0.0 | 1.8 | 1.8 | 0.0 | 0.0 | 0.8 | 0.8 | 0.0 | 0.0 |
| <i>Bidens pilosa</i> | Farmers Friend | 0.0 | 0.0 | 0.0 | 0.0 | 0.0 | 0.0 | 0.0 | 0.0 | 0.0 | 0.0 | 0.0 | 0.0 |
| <i>Carpobrotus</i> sp. | Pigface | 0.0 | 0.0 | 0.0 | 0.0 | 0.0 | 0.0 | 0.0 | 0.0 | 0.0 | 0.0 | 0.0 | 0.0 |
| <i>Hydrocotyle</i> sp. | Pennywort | 0.0 | 0.0 | 0.0 | 0.0 | 0.0 | 0.0 | 0.0 | 0.0 | 0.0 | 0.0 | 0.0 | 0.0 |
| <i>Isolepis nodosa</i> | Knobby Club-rush | 0.0 | 0.0 | 0.0 | 0.0 | 0.0 | 0.0 | 0.0 | 0.0 | 0.0 | 0.0 | 0.0 | 0.0 |
| <i>Juncus kraussii</i> | Sea Rush | 0.0 | 0.0 | 0.0 | 0.0 | 0.0 | 0.0 | 0.0 | 0.0 | 0.0 | 0.0 | 0.0 | 0.0 |
| <i>Plantago coronopus</i> | Plantain | 0.0 | 0.0 | 0.0 | 0.0 | 0.0 | 0.0 | 0.0 | 0.0 | 0.0 | 0.0 | 0.0 | 0.0 |
| <i>Samolus repens</i> | Creeping Brookweed | 0.0 | 0.0 | 0.0 | 0.0 | 0.0 | 0.0 | 0.0 | 0.0 | 0.0 | 0.0 | 0.0 | 0.0 |
| <i>Sarcocornia quinqueflora</i> | Beaded Glasswort | 11.8 | 6.3 | 23.8 | 2.4 | 0.0 | 0.0 | 17.5 | 6.3 | 15.0 | 4.7 | 12.5 | 4.3 |
| <i>Sarcocornia quinqueflora</i> (Dead) | Dead Beaded Glasswort | 0.0 | 0.0 | 0.0 | 0.0 | 0.0 | 0.0 | 0.0 | 0.0 | 0.0 | 0.0 | 0.0 | 0.0 |
| <i>Sarcocornia quinqueflora</i> (Poor) | Poor Condition Beaded Glasswort | 0.0 | 0.0 | 0.0 | 0.0 | 10.0 | 4.1 | 0.0 | 0.0 | 0.0 | 0.0 | 1.0 | 1.0 |
| <i>Spinifex sericeus</i> | Hairy Spinifex grass | 0.0 | 0.0 | 0.0 | 0.0 | 0.0 | 0.0 | 0.0 | 0.0 | 0.0 | 0.0 | 0.0 | 0.0 |
| <i>Sporobolus virginicus</i> | Salt Couch | 0.0 | 0.0 | 0.0 | 0.0 | 0.0 | 0.0 | 1.3 | 1.3 | 0.0 | 0.0 | 0.0 | 0.0 |
| <i>Suaeda australis</i> | Seablite | 3.0 | 1.9 | 0.8 | 0.8 | 1.8 | 0.9 | 0.8 | 0.8 | 2.5 | 0.3 | 1.8 | 1.0 |
| <i>Suaeda australis</i> (Dead) | Dead Seablite | 0.0 | 0.0 | 0.0 | 0.0 | 0.0 | 0.0 | 0.0 | 0.0 | 0.0 | 0.0 | 0.0 | 0.0 |
| <i>Tetragonia tetragonioides</i> | New Zealand Spinach | 0.0 | 0.0 | 0.0 | 0.0 | 0.0 | 0.0 | 0.0 | 0.0 | 0.0 | 0.0 | 0.0 | 0.0 |
| unidentified plant | unidentified plant | 0.0 | 0.0 | 0.0 | 0.0 | 0.0 | 0.0 | 0.0 | 0.0 | 0.0 | 0.0 | 0.0 | 0.0 |
| Grapsidae crab | unidentified grapsid crab | 0.5 | 0.3 | 0.8 | 0.5 | 0.5 | 0.3 | 0.5 | 0.3 | 0.5 | 0.3 | 0.3 | 0.3 |
| crab hole | crab hole | 8.3 | 1.2 | 5.0 | 3.1 | 8.3 | 2.3 | 11.0 | 2.5 | 5.0 | 3.1 | 6.5 | 3.5 |
| Amphipoda | unidentified amphipod | 0.0 | 0.0 | 0.0 | 0.0 | 0.0 | 0.0 | 0.0 | 0.0 | 0.0 | 0.0 | 0.0 | 0.0 |
| <i>Onchidium damelli</i> | Air breathing sea slug | 0.0 | 0.0 | 0.0 | 0.0 | 0.0 | 0.0 | 0.0 | 0.0 | 0.0 | 0.0 | 0.0 | 0.0 |
| unidentified gastropod | Unidentified gastropod | 0.0 | 0.0 | 0.0 | 0.0 | 0.0 | 0.0 | 0.0 | 0.0 | 0.0 | 0.0 | 0.0 | 0.0 |
| <i>Bembicium auratum</i> | Estuarine periwinkle | 0.0 | 0.0 | 0.0 | 0.0 | 0.0 | 0.0 | 0.0 | 0.0 | 0.0 | 0.0 | 0.0 | 0.0 |
| <i>Bembicium</i> sp | Unidentified periwinkle | 0.0 | 0.0 | 0.0 | 0.0 | 0.0 | 0.0 | 0.0 | 0.0 | 0.0 | 0.0 | 0.0 | 0.0 |
| <i>Littorina scabra</i> | Rough periwinkle | 1.0 | 0.6 | 2.8 | 1.5 | 0.0 | 0.0 | 0.3 | 0.3 | 1.3 | 1.3 | 0.8 | 0.5 |
| <i>Littorina</i> sp. | unidentified periwinkle | 0.0 | 0.0 | 0.0 | 0.0 | 0.0 | 0.0 | 0.0 | 0.0 | 0.0 | 0.0 | 0.0 | 0.0 |
| <i>Ophicardelus ornatus</i> | Mangrove air-breather | 20.0 | 20.0 | 8.5 | 5.1 | 5.0 | 0.9 | 3.8 | 2.5 | 5.5 | 4.0 | 5.0 | 2.0 |
| <i>Salinator fragilis</i> | Fragile air-breather | 0.0 | 0.0 | 0.0 | 0.0 | 0.0 | 0.0 | 0.0 | 0.0 | 0.0 | 0.0 | 0.0 | 0.0 |
| <i>Calthalotia fragum</i> | Top shell | 0.0 | 0.0 | 0.0 | 0.0 | 0.0 | 0.0 | 0.0 | 0.0 | 0.0 | 0.0 | 0.0 | 0.0 |
| Batillariidae | unidentified whelk | 0.0 | 0.0 | 0.0 | 0.0 | 0.0 | 0.0 | 0.0 | 0.0 | 0.0 | 0.0 | 0.0 | 0.0 |
| Mytilidae | unidentified mussel | 0.0 | 0.0 | 0.0 | 0.0 | 0.0 | 0.0 | 0.0 | 0.0 | 0.0 | 0.0 | 0.0 | 0.0 |

continued...

Table A-3: continued

| Species Name | Treatment Transect Common Name | Treated Reference Sans Souci | | | | | | Treated Reference Salt Pan Creek | | | | | |
|--|--------------------------------------|------------------------------|------|-------|-----|-------|-----|----------------------------------|------|--------|-----|--------|------|
| | | SS1-1 | | SS1-2 | | SS1-3 | | SPC1-1 | | SPC1-2 | | SPC1-3 | |
| | | MEAN | SE | MEAN | SE | MEAN | SE | MEAN | SE | MEAN | SE | MEAN | SE |
| <i>Acacia</i> sp. | unidentified Wattle | 0.0 | 0.0 | 0.0 | 0.0 | 0.0 | 0.0 | 0.0 | 0.0 | 0.0 | 0.0 | 0.0 | 0.0 |
| <i>Aegiceras corniculatum</i> | River Mangrove | 0.0 | 0.0 | 0.0 | 0.0 | 0.0 | 0.0 | 0.0 | 0.0 | 1.0 | 1.0 | 0.0 | 0.0 |
| <i>Atriplex australasica</i> | Green Saltbush | 0.0 | 0.0 | 0.0 | 0.0 | 0.0 | 0.0 | 0.0 | 0.0 | 1.3 | 0.5 | 3.3 | 1.8 |
| <i>Avicennia marina</i> | Grey Mangrove tree | 0.0 | 0.0 | 0.0 | 0.0 | 0.0 | 0.0 | 0.0 | 0.0 | 0.0 | 0.0 | 0.0 | 0.0 |
| <i>Avicennia marina</i> | Grey Mangrove seedling | 0.0 | 0.0 | 0.0 | 0.0 | 0.0 | 0.0 | 0.5 | 0.3 | 0.0 | 0.0 | 0.0 | 0.0 |
| <i>Avicennia marina</i> | Grey Mangrove pneumatophores | 0.0 | 0.0 | 0.0 | 0.0 | 0.0 | 0.0 | 61.8 | 41.5 | 12.8 | 9.8 | 15.0 | 14.3 |
| <i>Bidens pilosa</i> | Farmers Friend | 0.0 | 0.0 | 0.0 | 0.0 | 0.0 | 0.0 | 0.0 | 0.0 | 0.0 | 0.0 | 0.0 | 0.0 |
| <i>Carpobrotus</i> sp. | Pigface | 0.0 | 0.0 | 0.0 | 0.0 | 0.0 | 0.0 | 0.0 | 0.0 | 0.0 | 0.0 | 0.0 | 0.0 |
| <i>Hydrocotyle</i> sp. | Pennywort | 0.0 | 0.0 | 0.0 | 0.0 | 0.0 | 0.0 | 0.0 | 0.0 | 0.0 | 0.0 | 0.0 | 0.0 |
| <i>Isolepis nodosa</i> | Knobby Club-rush | 0.0 | 0.0 | 0.0 | 0.0 | 0.0 | 0.0 | 0.0 | 0.0 | 0.0 | 0.0 | 0.0 | 0.0 |
| <i>Juncus kraussii</i> | Sea Rush | 5.3 | 4.9 | 0.3 | 0.3 | 0.3 | 0.3 | 0.0 | 0.0 | 0.0 | 0.0 | 0.0 | 0.0 |
| <i>Plantago coronopus</i> | Plantain | 0.0 | 0.0 | 0.0 | 0.0 | 0.0 | 0.0 | 0.0 | 0.0 | 0.0 | 0.0 | 0.0 | 0.0 |
| <i>Samolus repens</i> | Creeping Brookweed | 0.0 | 0.0 | 0.0 | 0.0 | 0.0 | 0.0 | 0.0 | 0.0 | 0.3 | 0.3 | 0.5 | 0.3 |
| <i>Sarcocornia quinqueflora</i> | Beaded Glasswort | 5.0 | 4.4 | 10.5 | 5.9 | 7.3 | 4.2 | 0.0 | 0.0 | 0.0 | 0.0 | 0.0 | 0.0 |
| <i>Sarcocornia quinqueflora</i> (Dead) | Dead Beaded Glasswort | 0.0 | 0.0 | 0.0 | 0.0 | 0.0 | 0.0 | 0.0 | 0.0 | 0.0 | 0.0 | 0.0 | 0.0 |
| <i>Sarcocornia quinqueflora</i> (Poor) | Poor Condition Beaded Glasswort | 2.5 | 2.5 | 0.0 | 0.0 | 1.0 | 1.0 | 0.0 | 0.0 | 0.0 | 0.0 | 0.0 | 0.0 |
| <i>Spinifex sericeus</i> | Hairy Spinifex grass | 0.0 | 0.0 | 0.0 | 0.0 | 0.0 | 0.0 | 0.0 | 0.0 | 0.0 | 0.0 | 0.0 | 0.0 |
| <i>Suaeda australis</i> | Seablite | 0.0 | 0.0 | 0.0 | 0.0 | 0.0 | 0.0 | 0.0 | 0.0 | 5.0 | 1.7 | 0.0 | 0.0 |
| <i>Suaeda australis</i> (Dead) | Dead Seablite | 0.0 | 0.0 | 0.0 | 0.0 | 0.0 | 0.0 | 0.0 | 0.0 | 0.0 | 0.0 | 0.0 | 0.0 |
| <i>Tetragonia tetragonioides</i> | New Zealand Spinach | 0.0 | 0.0 | 0.0 | 0.0 | 0.0 | 0.0 | 0.0 | 0.0 | 0.0 | 0.0 | 0.0 | 0.0 |
| unidentified plant | unidentified plant | 0.0 | 0.0 | 0.0 | 0.0 | 0.0 | 0.0 | 0.0 | 0.0 | 0.0 | 0.0 | 1.0 | 1.0 |
| Grapsidae crab | unidentified grapsid crab | 0.0 | 0.0 | 0.0 | 0.0 | 0.0 | 0.0 | 0.0 | 0.0 | 0.0 | 0.0 | 0.0 | 0.0 |
| crab hole | crab hole | 2.3 | 1.3 | 2.3 | 1.7 | 0.5 | 0.5 | 1.0 | 0.7 | 0.0 | 0.0 | 1.0 | 0.7 |
| <i>Amphipoda</i> | unidentified amphipod | 0.0 | 0.0 | 0.0 | 0.0 | 0.0 | 0.0 | 0.0 | 0.0 | 0.0 | 0.0 | 0.0 | 0.0 |
| <i>Onchidium damelli</i> | Air breathing sea slug | 0.0 | 0.0 | 0.0 | 0.0 | 0.0 | 0.0 | 0.0 | 0.0 | 0.0 | 0.0 | 0.0 | 0.0 |
| unidentified gastropod | Unidentified gastropod | 0.3 | 0.3 | 0.5 | 0.5 | 0.3 | 0.3 | 0.0 | 0.0 | 0.0 | 0.0 | 0.0 | 0.0 |
| <i>Bembicium auratum</i> | Estuarine periwinkle | 1.0 | 1.0 | 2.8 | 1.6 | 1.0 | 1.0 | 0.0 | 0.0 | 0.0 | 0.0 | 0.0 | 0.0 |
| <i>Bembicium</i> sp | Unidentified periwinkle | 0.0 | 0.0 | 0.0 | 0.0 | 0.0 | 0.0 | 0.0 | 0.0 | 0.0 | 0.0 | 0.0 | 0.0 |
| <i>Littorina scabra</i> | Rough periwinkle | 25.5 | 21.7 | 7.8 | 6.2 | 18.3 | 9.4 | 13.8 | 2.7 | 9.0 | 1.9 | 18.3 | 9.1 |
| <i>Littorina</i> sp. | unidentified periwinkle | 0.0 | 0.0 | 0.0 | 0.0 | 0.0 | 0.0 | 0.0 | 0.0 | 0.0 | 0.0 | 0.0 | 0.0 |
| <i>Ophicardelus ornatus</i> | Mangrove air-breather | 0.0 | 0.0 | 1.8 | 1.4 | 0.0 | 0.0 | 0.0 | 0.0 | 0.0 | 0.0 | 0.5 | 0.3 |
| <i>Salinator fragilis</i> | Fragile air-breather | 0.0 | 0.0 | 0.0 | 0.0 | 0.0 | 0.0 | 0.0 | 0.0 | 0.0 | 0.0 | 0.0 | 0.0 |
| <i>Calthalotia fragum</i> | Top shell | 0.0 | 0.0 | 0.0 | 0.0 | 0.0 | 0.0 | 0.0 | 0.0 | 0.0 | 0.0 | 0.0 | 0.0 |
| <i>Batillariidae</i> | unidentified whelk | 0.0 | 0.0 | 0.0 | 0.0 | 0.0 | 0.0 | 0.0 | 0.0 | 0.0 | 0.0 | 0.0 | 0.0 |
| <i>Mytilidae</i> | unidentified mussel | 0.0 | 0.0 | 0.0 | 0.0 | 0.0 | 0.0 | 0.0 | 0.0 | 0.0 | 0.0 | 0.0 | 0.0 |

Table A-4: Mean height of the tallest plant species recorded within four random quadrats along each transect.

| Species Name | Treatment | New Saltmarsh 1 | | | | | | | | | | | |
|---------------------------------|----------------------|-----------------|-----|------|-----|------|-----|------|-----|------|-----|------|-----|
| | Transect | N1-1 | | N1-2 | | N1-3 | | N1-4 | | N1-5 | | N1-6 | |
| | Common Name | MEAN | SE | MEAN | SE | MEAN | SE | MEAN | SE | MEAN | SE | MEAN | SE |
| <i>Acacia</i> sp. | unidentified Wattle | 0.0 | 0.0 | 0.0 | 0.0 | 0.0 | 0.0 | 0.0 | 0.0 | 0.0 | 0.0 | 0.0 | 0.0 |
| <i>Aegiceras corniculatum</i> | River Mangrove | 0.0 | 0.0 | 0.0 | 0.0 | 0.0 | 0.0 | 0.0 | 0.0 | 0.0 | 0.0 | 0.0 | 0.0 |
| <i>Avicennia marina</i> | Grey Mangrove | 0.0 | 0.0 | 0.0 | 0.0 | 0.0 | 0.0 | 0.0 | 0.0 | 0.0 | 0.0 | 0.0 | 0.0 |
| <i>Atriplex australasica</i> | Green Saltbush | 0.0 | 0.0 | 0.0 | 0.0 | 0.0 | 0.0 | 0.0 | 0.0 | 0.0 | 0.0 | 0.0 | 0.0 |
| <i>Bidens pilosa</i> | Farmers Friend | 0.0 | 0.0 | 0.0 | 0.0 | 0.0 | 0.0 | 0.0 | 0.0 | 0.0 | 0.0 | 0.0 | 0.0 |
| <i>Hydrocotyle</i> sp. | Pennywort | 0.0 | 0.0 | 0.0 | 0.0 | 0.0 | 0.0 | 0.0 | 0.0 | 0.0 | 0.0 | 0.0 | 0.0 |
| <i>Isolepis nodosa</i> | Knobby Club-rush | 0.0 | 0.0 | 50.0 | 0.0 | 0.0 | 0.0 | 0.0 | 0.0 | 0.0 | 0.0 | 0.0 | 0.0 |
| <i>Juncus kraussii</i> | Sea Rush | 0.0 | 0.0 | 0.0 | 0.0 | 45.0 | 0.0 | 0.0 | 0.0 | 0.0 | 0.0 | 0.0 | 0.0 |
| <i>Samolus repens</i> | Creeping Brookweed | 0.0 | 0.0 | 0.0 | 0.0 | 0.0 | 0.0 | 0.0 | 0.0 | 0.0 | 0.0 | 0.0 | 0.0 |
| <i>Sarcocornia quinqueflora</i> | Beaded Glasswort | 24.0 | 2.8 | 22.0 | 0.0 | 22.0 | 1.4 | 27.0 | 1.0 | 25.0 | 0.0 | 19.0 | 0.7 |
| <i>Spinifex sericeus</i> | Hairy Spinifex grass | 30.0 | 0.0 | 0.0 | 0.0 | 0.0 | 0.0 | 0.0 | 0.0 | 0.0 | 0.0 | 0.0 | 0.0 |
| <i>Sporobolus virginicus</i> | Salt Couch | 28.0 | 0.0 | 40.0 | 0.0 | 40.0 | 0.0 | 30.0 | 0.0 | 32.0 | 1.4 | 25.0 | 0.0 |
| <i>Suaeda australis</i> | Seablite | 0.0 | 0.0 | 0.0 | 0.0 | 0.0 | 0.0 | 0.0 | 0.0 | 0.0 | 0.0 | 0.0 | 0.0 |
| unidentified rush | unidentified rush | 0.0 | 0.0 | 0.0 | 0.0 | 0.0 | 0.0 | 0.0 | 0.0 | 0.0 | 0.0 | 0.0 | 0.0 |
| unidentified herb | unidentified herb | 0.0 | 0.0 | 0.0 | 0.0 | 0.0 | 0.0 | 0.0 | 0.0 | 0.0 | 0.0 | 0.0 | 0.0 |
| unidentified plant | unidentified plant | 0.0 | 0.0 | 0.0 | 0.0 | 0.0 | 0.0 | 0.0 | 0.0 | 0.0 | 0.0 | 0.0 | 0.0 |

continued...

Table A-4: continued

| Species Name | Treatment | New Saltmarsh 2 | | | | | | | | | | | |
|---------------------------------|----------------------|-----------------|-----|-------|-----|-------|-----|-------|-----|-------|-----|-------|-----|
| | Transect | N2-9 | | N2-10 | | N2-11 | | N2-12 | | N2-13 | | N2-21 | |
| | Common Name | MEAN | SE | MEAN | SE | MEAN | SE | MEAN | SE | MEAN | SE | MEAN | SE |
| <i>Acacia</i> sp. | unidentified Wattle | 0.0 | 0.0 | 0.0 | 0.0 | 0.0 | 0.0 | 0.0 | 0.0 | 0.0 | 0.0 | 0.0 | 0.0 |
| <i>Aegiceras corniculatum</i> | River Mangrove | 0.0 | 0.0 | 0.0 | 0.0 | 0.0 | 0.0 | 0.0 | 0.0 | 0.0 | 0.0 | 0.0 | 0.0 |
| <i>Avicennia marina</i> | Grey Mangrove | 0.0 | 0.0 | 0.0 | 0.0 | 0.0 | 0.0 | 0.0 | 0.0 | 0.0 | 0.0 | 0.0 | 0.0 |
| <i>Atriplex australasica</i> | Green Saltbush | 0.0 | 0.0 | 0.0 | 0.0 | 0.0 | 0.0 | 0.0 | 0.0 | 0.0 | 0.0 | 0.0 | 0.0 |
| <i>Bidens pilosa</i> | Farmers Friend | 0.0 | 0.0 | 0.0 | 0.0 | 0.0 | 0.0 | 0.0 | 0.0 | 0.0 | 0.0 | 0.0 | 0.0 |
| <i>Hydrocotyle</i> sp. | Pennywort | 0.0 | 0.0 | 0.0 | 0.0 | 0.0 | 0.0 | 0.0 | 0.0 | 0.0 | 0.0 | 0.0 | 0.0 |
| <i>Isolepis nodosa</i> | Knobby Club-rush | 0.0 | 0.0 | 0.0 | 0.0 | 0.0 | 0.0 | 0.0 | 0.0 | 0.0 | 0.0 | 0.0 | 0.0 |
| <i>Juncus kraussii</i> | Sea Rush | 0.0 | 0.0 | 0.0 | 0.0 | 90.0 | 7.1 | 0.0 | 0.0 | 0.0 | 0.0 | 0.0 | 0.0 |
| <i>Samolus repens</i> | Creeping Brookweed | 0.0 | 0.0 | 0.0 | 0.0 | 0.0 | 0.0 | 0.0 | 0.0 | 0.0 | 0.0 | 0.0 | 0.0 |
| <i>Sarcocornia quinqueflora</i> | Beaded Glasswort | 25.8 | 2.3 | 25.7 | 2.0 | 35.0 | 0.0 | 25.0 | 0.0 | 16.7 | 2.9 | 27.0 | 0.0 |
| <i>Spinifex sericeus</i> | Hairy Spinifex grass | 0.0 | 0.0 | 0.0 | 0.0 | 0.0 | 0.0 | 0.0 | 0.0 | 0.0 | 0.0 | 0.0 | 0.0 |
| <i>Sporobolus virginicus</i> | Salt Couch | 0.0 | 0.0 | 40.0 | 0.0 | 30.0 | 0.0 | 45.0 | 0.0 | 40.0 | 0.0 | 37.7 | 4.4 |
| <i>Suaeda australis</i> | Seablite | 0.0 | 0.0 | 0.0 | 0.0 | 0.0 | 0.0 | 0.0 | 0.0 | 0.0 | 0.0 | 0.0 | 0.0 |
| unidentified rush | unidentified rush | 0.0 | 0.0 | 0.0 | 0.0 | 0.0 | 0.0 | 0.0 | 0.0 | 0.0 | 0.0 | 0.0 | 0.0 |
| unidentified herb | unidentified herb | 0.0 | 0.0 | 0.0 | 0.0 | 0.0 | 0.0 | 0.0 | 0.0 | 0.0 | 0.0 | 0.0 | 0.0 |
| unidentified plant | unidentified plant | 0.0 | 0.0 | 0.0 | 0.0 | 0.0 | 0.0 | 0.0 | 0.0 | 0.0 | 0.0 | 0.0 | 0.0 |

continued...

Table A-4: continued

| Species Name | Treatment | Transplanted Saltmarsh | | | | | | Retained Saltmarsh 1 | | | |
|---------------------------------|----------------------|------------------------|-----|-------|-----|-------|-----|----------------------|-----|-------|-----|
| | Transect | TR-8 | | TR-17 | | TR-18 | | R1-7 | | R1-14 | |
| | Common Name | MEAN | SE | MEAN | SE | MEAN | SE | MEAN | SE | MEAN | SE |
| <i>Acacia</i> sp. | unidentified Wattle | 0.0 | 0.0 | 0.0 | 0.0 | 0.0 | 0.0 | 0.0 | 0.0 | 0.0 | 0.0 |
| <i>Aegiceras corniculatum</i> | River Mangrove | 0.0 | 0.0 | 0.0 | 0.0 | 0.0 | 0.0 | 0.0 | 0.0 | 0.0 | 0.0 |
| <i>Avicennia marina</i> | Grey Mangrove | 0.0 | 0.0 | 0.0 | 0.0 | 0.0 | 0.0 | 0.0 | 0.0 | 0.0 | 0.0 |
| <i>Atriplex australasica</i> | Green Saltbush | 0.0 | 0.0 | 0.0 | 0.0 | 0.0 | 0.0 | 0.0 | 0.0 | 0.0 | 0.0 |
| <i>Bidens pilosa</i> | Farmers Friend | 0.0 | 0.0 | 28.0 | 0.0 | 0.0 | 0.0 | 0.0 | 0.0 | 0.0 | 0.0 |
| <i>Hydrocotyle</i> sp. | Pennywort | 0.0 | 0.0 | 0.0 | 0.0 | 0.0 | 0.0 | 0.0 | 0.0 | 0.0 | 0.0 |
| <i>Isolepis nodosa</i> | Knobby Club-rush | 0.0 | 0.0 | 0.0 | 0.0 | 0.0 | 0.0 | 0.0 | 0.0 | 0.0 | 0.0 |
| <i>Juncus kraussii</i> | Sea Rush | 100.0 | 0.0 | 0.0 | 0.0 | 0.0 | 0.0 | 0.0 | 0.0 | 0.0 | 0.0 |
| <i>Samolus repens</i> | Creeping Brookweed | 0.0 | 0.0 | 0.0 | 0.0 | 0.0 | 0.0 | 0.0 | 0.0 | 0.0 | 0.0 |
| <i>Sarcocornia quinqueflora</i> | Beaded Glasswort | 0.0 | 0.0 | 0.0 | 0.0 | 0.0 | 0.0 | 21.5 | 2.5 | 16.3 | 5.5 |
| <i>Spinifex sericeus</i> | Hairy Spinifex grass | 0.0 | 0.0 | 0.0 | 0.0 | 0.0 | 0.0 | 0.0 | 0.0 | 40.0 | 0.0 |
| <i>Sporobolus virginicus</i> | Salt Couch | 35.0 | 0.0 | 40.0 | 0.0 | 30.8 | 5.3 | 0.0 | 0.0 | 0.0 | 0.0 |
| <i>Suaeda australis</i> | Seablite | 35.0 | 0.0 | 25.0 | 0.0 | 0.0 | 0.0 | 49.0 | 0.7 | 0.0 | 0.0 |
| unidentified rush | unidentified rush | 0.0 | 0.0 | 0.0 | 0.0 | 0.0 | 0.0 | 0.0 | 0.0 | 0.0 | 0.0 |
| unidentified herb | unidentified herb | 0.0 | 0.0 | 0.0 | 0.0 | 0.0 | 0.0 | 0.0 | 0.0 | 0.0 | 0.0 |
| unidentified plant | unidentified plant | 0.0 | 0.0 | 0.0 | 0.0 | 0.0 | 0.0 | 0.0 | 0.0 | 0.0 | 0.0 |

continued...

Table A-4: continued

| Species Name | Treatment Transect Common Name | Retained Saltmarsh 2 | | | | | | Altered Saltmarsh 2 | | | |
|---------------------------------|--------------------------------------|----------------------|-----|-------|-----|-------|-----|---------------------|-----|-------|-----|
| | | R2-20 | | R2-22 | | A2-15 | | A2-16 | | A2-19 | |
| | | MEAN | SE | MEAN | SE | MEAN | SE | MEAN | SE | MEAN | SE |
| <i>Acacia</i> sp. | unidentified Wattle | 0.0 | 0.0 | 0.0 | 0.0 | 0.0 | 0.0 | 0.0 | 0.0 | 0.0 | 0.0 |
| <i>Aegiceras corniculatum</i> | River Mangrove | 0.0 | 0.0 | 0.0 | 0.0 | 0.0 | 0.0 | 0.0 | 0.0 | 0.0 | 0.0 |
| <i>Avicennia marina</i> | Grey Mangrove | 0.0 | 0.0 | 0.0 | 0.0 | 0.0 | 0.0 | 0.0 | 0.0 | 0.0 | 0.0 |
| <i>Atriplex australasica</i> | Green Saltbush | 0.0 | 0.0 | 0.0 | 0.0 | 0.0 | 0.0 | 0.0 | 0.0 | 0.0 | 0.0 |
| <i>Bidens pilosa</i> | Farmers Friend | 0.0 | 0.0 | 0.0 | 0.0 | 0.0 | 0.0 | 0.0 | 0.0 | 0.0 | 0.0 |
| <i>Hydrocotyle</i> sp. | Pennywort | 0.0 | 0.0 | 0.0 | 0.0 | 0.0 | 0.0 | 0.0 | 0.0 | 0.0 | 0.0 |
| <i>Isolepis nodosa</i> | Knobby Club-rush | 0.0 | 0.0 | 0.0 | 0.0 | 0.0 | 0.0 | 0.0 | 0.0 | 0.0 | 0.0 |
| <i>Juncus kraussii</i> | Sea Rush | 100.0 | 0.0 | 0.0 | 0.0 | 0.0 | 0.0 | 0.0 | 0.0 | 0.0 | 0.0 |
| <i>Samolus repens</i> | Creeping Brookweed | 0.0 | 0.0 | 0.0 | 0.0 | 0.0 | 0.0 | 0.0 | 0.0 | 0.0 | 0.0 |
| <i>Sarcocornia quinqueflora</i> | Beaded Glasswort | 25.0 | 0.0 | 28.0 | 0.0 | 0.0 | 0.0 | 0.0 | 0.0 | 0.0 | 0.0 |
| <i>Spinifex sericeus</i> | Hairy Spinifex grass | 0.0 | 0.0 | 0.0 | 0.0 | 0.0 | 0.0 | 0.0 | 0.0 | 0.0 | 0.0 |
| <i>Sporobolus virginicus</i> | Salt Couch | 0.0 | 0.0 | 26.5 | 1.1 | 0.0 | 0.0 | 0.0 | 0.0 | 47.5 | 1.4 |
| <i>Suaeda australis</i> | Seablite | 60.0 | 7.1 | 40.0 | 0.0 | 50.0 | 0.0 | 0.0 | 0.0 | 0.0 | 0.0 |
| unidentified rush | unidentified rush | 0.0 | 0.0 | 0.0 | 0.0 | 0.0 | 0.0 | 100.0 | 0.0 | 0.0 | 0.0 |
| unidentified herb | unidentified herb | 0.0 | 0.0 | 0.0 | 0.0 | 0.0 | 0.0 | 0.0 | 0.0 | 0.0 | 0.0 |
| unidentified plant | unidentified plant | 0.0 | 0.0 | 0.0 | 0.0 | 0.0 | 0.0 | 0.0 | 0.0 | 0.0 | 0.0 |

continued...

Table A-4: continued

| Species Name | Treatment | Reference Quibray Bay 1 | | | | | | Reference Quibray Bay 2 | | | | | |
|---------------------------------|----------------------|-------------------------|-----|------|-----|------|-----|-------------------------|-----|------|-----|------|------|
| | Transect | Q1-1 | | Q1-2 | | Q1-3 | | Q2-4 | | Q2-5 | | Q2-6 | |
| Common Name | | MEAN | SE | MEAN | SE | MEAN | SE | MEAN | SE | MEAN | SE | MEAN | SE |
| <i>Acacia</i> sp. | unidentified Wattle | 0.0 | 0.0 | 0.0 | 0.0 | 0.0 | 0.0 | 0.0 | 0.0 | 0.0 | 0.0 | 0.0 | 0.0 |
| <i>Aegiceras corniculatum</i> | River Mangrove | 0.0 | 0.0 | 0.0 | 0.0 | 0.0 | 0.0 | 0.0 | 0.0 | 0.0 | 0.0 | 0.0 | 0.0 |
| <i>Avicennia marina</i> | Grey Mangrove | 0.0 | 0.0 | 0.0 | 0.0 | 0.0 | 0.0 | 26.0 | 0.0 | 0.0 | 0.0 | 0.0 | 0.0 |
| <i>Atriplex australasica</i> | Green Saltbush | 0.0 | 0.0 | 0.0 | 0.0 | 0.0 | 0.0 | 0.0 | 0.0 | 0.0 | 0.0 | 0.0 | 0.0 |
| <i>Bidens pilosa</i> | Farmers Friend | 0.0 | 0.0 | 0.0 | 0.0 | 0.0 | 0.0 | 0.0 | 0.0 | 0.0 | 0.0 | 0.0 | 0.0 |
| <i>Hydrocotyle</i> sp. | Pennywort | 0.0 | 0.0 | 17.0 | 0.0 | 0.0 | 0.0 | 0.0 | 0.0 | 0.0 | 0.0 | 0.0 | 0.0 |
| <i>Isolepis nodosa</i> | Knobby Club-rush | 0.0 | 0.0 | 0.0 | 0.0 | 0.0 | 0.0 | 0.0 | 0.0 | 0.0 | 0.0 | 0.0 | 0.0 |
| <i>Juncus kraussii</i> | Sea Rush | 0.0 | 0.0 | 0.0 | 0.0 | 0.0 | 0.0 | 0.0 | 0.0 | 0.0 | 0.0 | 0.0 | 0.0 |
| <i>Samolus repens</i> | Creeping Brookweed | 0.0 | 0.0 | 0.0 | 0.0 | 0.0 | 0.0 | 0.0 | 0.0 | 0.0 | 0.0 | 0.0 | 0.0 |
| <i>Sarcocornia quinqueflora</i> | Beaded Glasswort | 27.0 | 2.1 | 23.0 | 2.8 | 19.0 | 2.8 | 25.5 | 0.4 | 18.7 | 1.8 | 49.0 | 21.9 |
| <i>Spinifex sericeus</i> | Hairy Spinifex grass | 0.0 | 0.0 | 0.0 | 0.0 | 0.0 | 0.0 | 0.0 | 0.0 | 0.0 | 0.0 | 0.0 | 0.0 |
| <i>Sporobolus virginicus</i> | Salt Couch | 0.0 | 0.0 | 28.0 | 0.0 | 0.0 | 0.0 | 0.0 | 0.0 | 25.0 | 0.0 | 25.0 | 3.5 |
| <i>Suaeda australis</i> | Seablite | 34.0 | 0.0 | 0.0 | 0.0 | 32.5 | 1.8 | 35.0 | 0.0 | 0.0 | 0.0 | 0.0 | 0.0 |
| unidentified rush | unidentified rush | 0.0 | 0.0 | 0.0 | 0.0 | 0.0 | 0.0 | 0.0 | 0.0 | 0.0 | 0.0 | 0.0 | 0.0 |
| unidentified herb | unidentified herb | 0.0 | 0.0 | 0.0 | 0.0 | 0.0 | 0.0 | 0.0 | 0.0 | 0.0 | 0.0 | 0.0 | 0.0 |
| unidentified plant | unidentified plant | 0.0 | 0.0 | 0.0 | 0.0 | 0.0 | 0.0 | 0.0 | 0.0 | 0.0 | 0.0 | 0.0 | 0.0 |

continued...

Table A-4: continued

| Species Name | Treatment Transect Common Name | Reference Woollooware Bay 1 | | | | | | Reference Woollooware Bay 2 | | | | | |
|---------------------------------|--------------------------------------|-----------------------------|-----|------|-----|------|-----|-----------------------------|-----|------|-----|------|-----|
| | | W1-1 | | W1-2 | | W1-3 | | W2-4 | | W2-5 | | W2-6 | |
| | | MEAN | SE | MEAN | SE | MEAN | SE | MEAN | SE | MEAN | SE | MEAN | SE |
| <i>Acacia</i> sp. | unidentified Wattle | 0.0 | 0.0 | 0.0 | 0.0 | 0.0 | 0.0 | 0.0 | 0.0 | 0.0 | 0.0 | 0.0 | 0.0 |
| <i>Aegiceras corniculatum</i> | River Mangrove | 0.0 | 0.0 | 0.0 | 0.0 | 0.0 | 0.0 | 0.0 | 0.0 | 0.0 | 0.0 | 0.0 | 0.0 |
| <i>Avicennia marina</i> | Grey Mangrove | 0.0 | 0.0 | 0.0 | 0.0 | 0.0 | 0.0 | 0.0 | 0.0 | 0.0 | 0.0 | 0.0 | 0.0 |
| <i>Atriplex australasica</i> | Green Saltbush | 0.0 | 0.0 | 0.0 | 0.0 | 0.0 | 0.0 | 0.0 | 0.0 | 0.0 | 0.0 | 0.0 | 0.0 |
| <i>Bidens pilosa</i> | Farmers Friend | 0.0 | 0.0 | 0.0 | 0.0 | 0.0 | 0.0 | 0.0 | 0.0 | 0.0 | 0.0 | 0.0 | 0.0 |
| <i>Hydrocotyle</i> sp. | Pennywort | 0.0 | 0.0 | 0.0 | 0.0 | 0.0 | 0.0 | 0.0 | 0.0 | 0.0 | 0.0 | 0.0 | 0.0 |
| <i>Isolepis nodosa</i> | Knobby Club-rush | 0.0 | 0.0 | 0.0 | 0.0 | 0.0 | 0.0 | 0.0 | 0.0 | 0.0 | 0.0 | 0.0 | 0.0 |
| <i>Juncus kraussii</i> | Sea Rush | 0.0 | 0.0 | 0.0 | 0.0 | 0.0 | 0.0 | 0.0 | 0.0 | 0.0 | 0.0 | 0.0 | 0.0 |
| <i>Samolus repens</i> | Creeping Brookweed | 0.0 | 0.0 | 0.0 | 0.0 | 0.0 | 0.0 | 0.0 | 0.0 | 0.0 | 0.0 | 0.0 | 0.0 |
| <i>Sarcocornia quinqueflora</i> | Beaded Glasswort | 30.0 | 0.0 | 18.3 | 1.4 | 26.0 | 3.5 | 24.0 | 0.7 | 0.0 | 0.0 | 20.0 | 0.0 |
| <i>Spinifex sericeus</i> | Hairy Spinifex grass | 0.0 | 0.0 | 0.0 | 0.0 | 0.0 | 0.0 | 0.0 | 0.0 | 0.0 | 0.0 | 0.0 | 0.0 |
| <i>Sporobolus virginicus</i> | Salt Couch | 18.0 | 0.0 | 0.0 | 0.0 | 0.0 | 0.0 | 30.0 | 0.0 | 0.0 | 0.0 | 25.0 | 0.0 |
| <i>Suaeda australis</i> | Seablite | 40.0 | 0.0 | 25.0 | 0.0 | 30.0 | 0.0 | 45.0 | 0.0 | 33.3 | 1.2 | 40.0 | 7.1 |
| unidentified rush | unidentified rush | 0.0 | 0.0 | 0.0 | 0.0 | 0.0 | 0.0 | 0.0 | 0.0 | 0.0 | 0.0 | 0.0 | 0.0 |
| unidentified herb | unidentified herb | 0.0 | 0.0 | 0.0 | 0.0 | 0.0 | 0.0 | 0.0 | 0.0 | 0.0 | 0.0 | 0.0 | 0.0 |
| unidentified plant | unidentified plant | 0.0 | 0.0 | 0.0 | 0.0 | 0.0 | 0.0 | 0.0 | 0.0 | 0.0 | 0.0 | 0.0 | 0.0 |

continued..

Table A-4: continued

| Species Name | Treatment | Treated Reference Sans Souci | | | | | | Treated Reference Salt Pan Creek | | | | | |
|---------------------------------|----------------------|------------------------------|------|-------|-----|-------|-----|----------------------------------|-----|--------|-----|--------|------|
| | Transect | SS1-1 | | SS1-2 | | SS1-3 | | SPC1-1 | | SPC1-2 | | SPC1-3 | |
| Common Name | | MEAN | SE | MEAN | SE | MEAN | SE | MEAN | SE | MEAN | SE | MEAN | SE |
| <i>Acacia</i> sp. | unidentified Wattle | 0.0 | 0.0 | 0.0 | 0.0 | 0.0 | 0.0 | 0.0 | 0.0 | 0.0 | 0.0 | 0.0 | 0.0 |
| <i>Aegiceras corniculatum</i> | River Mangrove | 0.0 | 0.0 | 0.0 | 0.0 | 0.0 | 0.0 | 0.0 | 0.0 | 0.0 | 0.0 | 0.0 | 0.0 |
| <i>Avicennia marina</i> | Grey Mangrove | 0.0 | 0.0 | 0.0 | 0.0 | 0.0 | 0.0 | 0.0 | 0.0 | 0.0 | 0.0 | 0.0 | 0.0 |
| <i>Atriplex australasica</i> | Green Saltbush | 0.0 | 0.0 | 0.0 | 0.0 | 0.0 | 0.0 | 0.0 | 0.0 | 30.0 | 0.0 | 47.5 | 15.9 |
| <i>Bidens pilosa</i> | Farmers Friend | 0.0 | 0.0 | 0.0 | 0.0 | 0.0 | 0.0 | 0.0 | 0.0 | 0.0 | 0.0 | 0.0 | 0.0 |
| <i>Hydrocotyle</i> sp. | Pennywort | 0.0 | 0.0 | 0.0 | 0.0 | 0.0 | 0.0 | 0.0 | 0.0 | 0.0 | 0.0 | 0.0 | 0.0 |
| <i>Isolepis nodosa</i> | Knobby Club-rush | 0.0 | 0.0 | 0.0 | 0.0 | 0.0 | 0.0 | 0.0 | 0.0 | 0.0 | 0.0 | 0.0 | 0.0 |
| <i>Juncus kraussii</i> | Sea Rush | 75.0 | 17.7 | 0.0 | 0.0 | 110.0 | 0.0 | 0.0 | 0.0 | 0.0 | 0.0 | 0.0 | 0.0 |
| <i>Samolus repens</i> | Creeping Brookweed | 0.0 | 0.0 | 0.0 | 0.0 | 0.0 | 0.0 | 0.0 | 0.0 | 0.0 | 0.0 | 35.0 | 0.0 |
| <i>Sarcocornia quinqueflora</i> | Beaded Glasswort | 20.0 | 3.5 | 21.0 | 1.8 | 23.0 | 3.5 | 0.0 | 0.0 | 0.0 | 0.0 | 0.0 | 0.0 |
| <i>Spinifex sericeus</i> | Hairy Spinifex grass | 0.0 | 0.0 | 0.0 | 0.0 | 0.0 | 0.0 | 0.0 | 0.0 | 0.0 | 0.0 | 0.0 | 0.0 |
| <i>Sporobolus virginicus</i> | Salt Couch | 0.0 | 0.0 | 0.0 | 0.0 | 0.0 | 0.0 | 0.0 | 0.0 | 0.0 | 0.0 | 0.0 | 0.0 |
| <i>Suaeda australis</i> | Seablite | 0.0 | 0.0 | 0.0 | 0.0 | 0.0 | 0.0 | 0.0 | 0.0 | 58.3 | 3.8 | 0.0 | 0.0 |
| unidentified rush | unidentified rush | 0.0 | 0.0 | 0.0 | 0.0 | 0.0 | 0.0 | 0.0 | 0.0 | 0.0 | 0.0 | 0.0 | 0.0 |
| unidentified herb | unidentified herb | 0.0 | 0.0 | 0.0 | 0.0 | 0.0 | 0.0 | 0.0 | 0.0 | 0.0 | 0.0 | 0.0 | 0.0 |
| unidentified plant | unidentified plant | 0.0 | 0.0 | 0.0 | 0.0 | 0.0 | 0.0 | 0.0 | 0.0 | 0.0 | 0.0 | 0.0 | 0.0 |