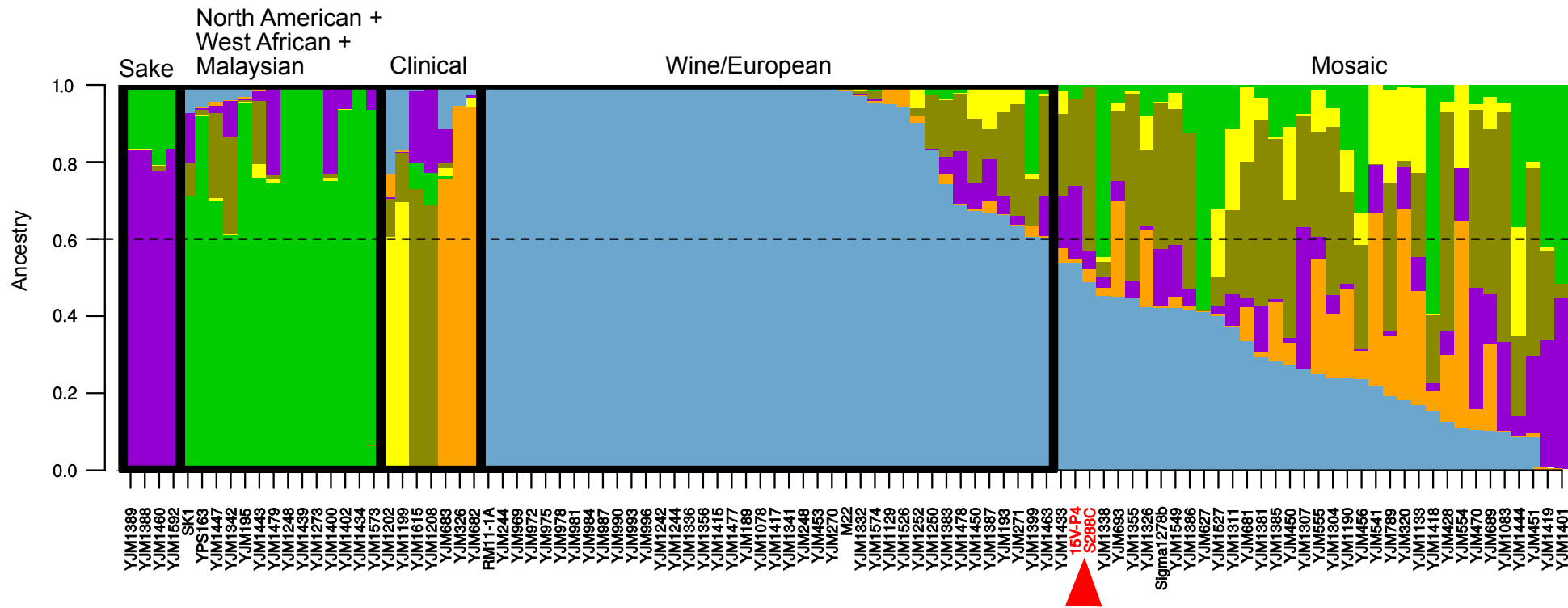


A



S2 Fig

### Phylogenetic relation of 15V-P4 to other *S. cerevisiae* strains.

(A) Population structure of 101 strains including 15V-P4 assessed with three sets of 1210 variable positions with roughly uniform minor allele frequency distribution. Populations or groups of similar populations are framed. 15V-P4 and S288C are highlighted in red.

(B) Neighbor joining phylogenetic tree of 97 strains including 15V-P4, RedStar and YS9 inferred from alignment of conservative chromosome regions. Bakery strains (RedStar and YS9) are highlighted in violet, 15V-P4 and S288C are highlighted in red.

B

