

# A new perspective into the discovery of diversity of sea cucumbers (Echinodermata: Holothuroidea)

Luciana Martins (✉ [martinsluciana@gmail.com](mailto:martinsluciana@gmail.com))

Instituto Oceanográfico, Universidade de São Paulo, Brazil. <https://orcid.org/0000-0002-8107-3265>

Karen Costa

Instituto Oceanográfico, Universidade de São Paulo, Brazil. <https://orcid.org/0000-0002-4757-0524>

Felipe Toledo

Instituto Oceanográfico, Universidade de São Paulo, Brazil. <https://orcid.org/0000-0001-6959-2065>

---

## Short Report

**Keywords:** Holocene, Holothuroids, marine sediments, Campos Basin, Brazil, Southwest Atlantic

**Posted Date:** April 20th, 2023

**DOI:** <https://doi.org/10.21203/rs.3.rs-2837886/v1>

**License:** © ⓘ This work is licensed under a Creative Commons Attribution 4.0 International License.

[Read Full License](#)

---

# Abstract

The study of disarticulated ossicles of recent sea cucumbers from Campos Basin, Rio de Janeiro, Brazil, from various Holocene strata, obtained by micropaleontological methods, resulted in the identification of at least eight holothurian taxa, belonging to the four of the seven orders of Holothuroidea: Apodida (Synaptidae, Chiridotidae), Dendrochirotida (Psolidae and Cucumariidae), Holothuriida (*Holothuria*) and Molpadiida (Molpadiidae, Eupyrgidae). Our paper endorses the importance of studies of recent fauna based on isolated ossicles for taxonomy, biostratigraphy, and ecology. This study represents the first effort at the study of recent fauna of sea cucumbers based on the analysis of preserved ossicles in marine sediments.

## Introduction

Of all echinoderm classes, the Holothuroidea (sea cucumbers, sea pigs) stand out by their worm-like body shape devoid of spines. Therefore, the holothuroid skeleton is composed of microscopic ossicles, composed mostly of  $\text{CaCO}_3$  embedded in the body tissues and a small, ring-like plated structure, called calcareous ring, which protects and supports organs in the anterior region of the body (Hyman, 1955).

The reduced skeletonization provided numerous ecological opportunities to holothuroids and they often are the most abundant echinoderms in various marine ecosystems (Gilliland, 1993). Although some species live epifaunally, most species burrow in soft substrates, and they can be found from the littoral zone to the deep sea (Gallo et al., 2015).

Our knowledge of the holothuroid extant (~ 1700) and fossil (~ 1000) records is extremely poor (Reich, 2013; WoRMS, 2023). South American fossil record is composed of only ~ 10 holothuroid species, most from the Devonian and Cretaceous of Argentina and Chile (Bertels (1965); Haude (1995a, b); Haude (1997); Caramés et al. (2019)). In Brazil, there is only one species described to date—*Calcancora beurleni* Tinoco, 1963 from the Paleocene of northeast of Brazil, and the modern fauna of Holothuroidea is represented by ~ 50 species.

Traditionally, the taxonomy of living species of Holothuroidea is based on the analysis of the complete specimen (Martins and Souto 2020). However, the study of isolated diagnostic ossicles among marine sediments can reveal a great hidden diversity. In addition, it can provide relevant palaeoecological and paleoenvironmental information.

The present contribution represents the first effort to report holothurian ossicles recovered from marine deposits of the Holocene from Campos Basin, Rio de Janeiro, Brazil.

## Material And Methods

### Marine Sediment Core

The material studied comes from the investigation of a sediment piston core (GL-824) recovery of 2015 cm from the continental slope of the Campos Basin, Rio de Janeiro, Brazil (23°29'17,87" S;41°08'02,99" W), at 532 m depth (Fig. 1). The sediment core GL-824 was collected during an expedition with the Fugro Explorer Vessel.

A total of 10 samples were randomly selected and analyzed. The age of the sediments was previously established by Toledo et al. (2016) based on <sup>14</sup>C analysis measured in *Globogerinoides ruber* (d'Orbigny, 1839), and it indicates that the core comprises the last 25.31 k.a.

Modern holothurian ossicles were obtained after sediment washing (sieve sizes: 0.063 mm and 150 μm) and include around 1420 isolated holothurian ossicles. The ossicles were examined by means of optical and electron microscopy, and posteriorly they were identified to the lowest possible taxonomic rank.

## Results

### *Marine Sediment composition*

The Core GL-854 was composed at the first 1,500 cm of olive-gray carbonate rich mud (18–30% CaCO<sub>3</sub>), and from 1,550 to 2015 cm, the sediment is composed of dark gray carbonate-poor mud (5–18% CaCO<sub>3</sub>) (Pedrão et al., 2022).

A total of about 1420 isolated ossicles were analyzed and identified into seven families and two genera. Almost all higher-level groups of holothuroids were found: Apodida (two families and three species); Holothuriida (one family and species); Molpadida (two families and two species) and Dendrochirotida (two families and two species). The orders Elasipodida, Synalactida, and Persiculida were not found. *Synaptidae* sp.1, *Synaptidae* sp.2 and *Eupyrgus* sp.1 represent at least a new record to the Southwestern Atlantic coast. Anchors, anchor plates, and tables (*Eupyrgus*) were the most abundant ossicles. Also, several non-diagnostic ossicles were found (e.g., plates, rods, endplates, and four-pillared tables).

### Taxonomy

#### **Class Holothuroidea de Blainville, 1834**

#### **Order Apodida Brandt, 1835**

#### **Family Chiridotidae Östergren, 1898**

Chiridotidae sp.

#### **Family Synaptidae Burmeister, 1837**

Synaptidae sp.1

Synaptidae sp.2

## Order Dendrochirotida Grube, 1840

### Family Psolidae Burmeister, 1837

Psolidae sp.

### Family Cucumariidae Ludwig, 1894

Cucumariidae sp.

## Order Holothuriida Miller, Kerr, Paulay, Reich, Wilson, Carvajal & Rouse, 2017

### Family Holothuriidae Burmeister, 1837

Holothuriidae sp.

## Order Molpadiida Haeckel, 1896

### Family Eupyrgidae Semper, 1867

*Eupyrgus* sp.

### Family Molpadiidae J. Müller, 1850

*Molpadia* sp.

### Family Chiridotidae

Chiridotidae sp.

Figure 2a, b

**Description.** Wheels (60–100 µm; Figure 2a, b) stacked in warts, with six spokes, inner margin of rim with denticles, outer margin smooth.

**Remarks.** The family Chiridotidae is composed of two subfamilies: Chiridotinae Östergren, 1898 and Taeniogyrinae Smirnov, 1998. Both possess wheels in the body wall. However, the presence of sigmoid hooks and radial plates of the calcareous ring without perforation differs Taeniogyrinae from Chiridotinae. Therefore, the described wheel ossicle belongs to Chiridotidae.

### Family Synaptidae

**Remarks.** To date, seven Synaptidae occurs at the South Atlantic, *Epitomapta roseola* (Verrill, 1874), *Euapta lappa* (Müller, 1850), *Protankyra benedeni* (Ludwig, 1881), *Protankyra ramiurna* Heding, 1928, *Synaptula hydriformis* (Lesueur, 1824), *Synaptula secreta* Ancona-Lopez, 1957 and *Yemoja brasiliensis* (Freire and Grohmann, 1989).

## Synaptidae sp.1

Figure 2c, d

**Description.** Body wall anchors with smooth arms, vertex and stock (100–150 µm; Figure 2c). Anchor plates oval (130–200 µm long, 110–150 µm wide; Figure 2d), margins smooth and undulating, anterior region broad with seven denticulated holes, bridge denticulate and well developed, posterior region narrow, with two large and three small marginal holes.

## Synaptidae sp.2

Figure 2e, f

Body wall anchors with serrate arms. Stock and vertex smooth (200–300 µm; Figure 2e, f).

### Remarks.

The species Synaptidae sp. 1 differs from the species of the *Protankyra* by the morphology of anchors plates (multiperforated in *Protankyra* vs. seven-holed), differs from *Y. brasiliensis* and *E. lappa* by the anchor morphology (stock branched in *Y. brasiliensis* and *E. lappa* vs. unbranched), differs from *E. roseola* by the anchor morphology (arms and stock toothed vs. untoothed). Finally, it differs from *S. hydriformis* by the anchor stock and vertex toothed vs. untoothed and differs from *S. secreta* by the anchor plate morphology (smooth holes in *S. secreta* vs. denticulated holes). Due to the absence of characters from internal morphology, it is not possible to designate the genus or species. However, it is a new occurrence of Synaptidae to the Brazilian coast.

The species Synaptidae sp. 2 differs from *Protankyra benedeni* and *Protankyra ramiurna* by having stock with inconspicuous knobs (vs. stock with conspicuous knobs in *P. benedeni* and stock smooth *P. ramiurna*). In addition, it differs by the number of teeth per arm (7–10 in *P. benedeni* and up to 6 in Synaptidae sp. 2) and (arm smooth *P. ramiurna* vs. arms toothed in Synaptidae sp. 2).

It differs from *Y. brasiliensis* and *E. lappa* by the anchor morphology unbranched (vs. stock branched in *Y. brasiliensis* and *E. lappa*). Synaptidae sp. 2 differs from *E. roseola* by the anchor morphology (stock with minute teeth vs. stock with conspicuous teeth). It differs from *S. hydriformis* by the presence of knobs at the vertex, absent in Synaptidae sp 2 and it differs from by the absence of teeth at the arms, present in Synaptidae sp 2. Finally, it differs from *S. secreta* by the anchor morphology (smooth arms and stock in *S. secreta* vs. toothed arms and stock).

Due to the absence of characters from internal morphology, it is not possible to designate the genus or species. However, Synaptidae sp1 and Synaptidae sp 2 represent at least two new occurrences of Synaptidae to the Brazilian coast.

## Order Dendrochirotida

## Family Psolidae

Psolidae sp.

Figure 2g

**Description.** Knobbed, perforated plate, irregular in outline, undulating margins (140–200 µm long; Fig. 2g) and rounded holes up to 20 µm in diameter.

**Remarks.** Knobbed perforated plates are found typically at the sole of Psolidae, except *Ceto* Gistel, 1848.

## Family Cucumariidae

Cucumariidae sp

Figure 2h

**Description.** Flat perforated rod; without expanded ends. Margins smooth and undulate (800–1000 µm long; Fig. 2h)

**Remarks.** Flattened rods are uncommon among Holothuroidea. However, this specific type of rod is present among several Cucumariidae species Gilliland (1993)

## Order Holothuriida

### Family Holothuriidae

Holothuriidae sp

Figure 2i

**Description.** Regular smooth button, margin undulate. Three pair of holes (250–300 µm long; Fig. 2i).

**Remarks.** The button described belongs to the clade *Holothuria* + *Labidodemas* (Holothuriidae: Holothuriida) (Samyn et al., 2005; Miller et al., 2017) due to the typical “holothuriid cross”. Although these buttons are like the Dendrochirotida buttons, they vary in shape (oval to elongated) with smooth outline (Gilliland, 1993)

## Order Molpadiida

### Eupyrgidae

*Eupyrgus* sp.

Figure 2j,k

**Description.** Body wall tables with a high and spiny spire placed near the edge of the disc and three pillars connected by crossbeams ending in a tooth. The first type (80–100  $\mu\text{m}$ ; Figure 2j) is smaller and the holes are bigger; the second type (200–400  $\mu\text{m}$ ; Figure 2k) is bigger and the holes are smaller.

**Remarks.** The presence of three-pillared tables with multiperforated and irregular disc indicates that the species belong to the monogeneric family Eupyrgidae, genus *Eupyrgus* (Gilliland, 1993; Smirnov, 2012).

## Family Molpadiidae

*Molpadia* sp.

### Figure 2l

**Description.** Tables from body wall triradiate, disc with three large holes. Spire of three fused pillars (80–100  $\mu\text{m}$ ; Figure 2l).

**Remarks.** The presence of three pillared tables with large oval holes is a diagnostic character that indicates that the species belong to the family Molpadidae (Gilliland, 1993; Smirnov, 2012).

### Other Holothuroid ossicles:

Figure 3 a-h

### Endplate

Figure 3a

**Description.** Endplate circular with large holes around margin, smaller ones medially.

**Remarks.** Tube feet endplates occur in the Actinopoda clade (Miller et al. 2017), except Molpadida that lack tube feet, showing a marked homoplasy. The genus *Laetmogone* (Elasipodida) possesses a stellate endplate. In the other Actinopodans, however, the end plates have a similar morphology.

### Four-pillared Table

Figure 3b-d

**Description.** Four pillared tables with multiperforated and circular disk one large central hole; margin undulate; spire fused ending in a crown of spines (80–200  $\mu\text{m}$ ; Fig.3 b,c); Four pillared tables with multiperforated and circular disk four central holes; margin undulate (120–150  $\mu\text{m}$ ; Fig.3d);

**Remarks.** Although three pillared tables are an excellent character diagnostic, four-pillared tables are widespread among Holothuroidea, occurring in the Actinopoda clade (Miller et al. 2017), except in Elasipodida, and like endplates, it shows a remarkable homoplasy.

### Rods

## Figure 3e

Virtually every order of Holothuroidea has rods. Except in Dendrochirotida which has a flattened rod, the remaining orders show fusiform rods with a high degree of morphological variation. Like the four-pillared table, rods also show a marked homoplasy.

## Plate

### Figure 3 f-h

**Description.** Circular plates; multiperforated. Holes of same size; undulate margins (200–400 µm long, Fig3 f-h)

**Remarks.** Perforated plates are found in all families of Dendrochirotida and in the orders Elasipodia and in a few Holothuriida. These plates are usually flat, and they can be thin (most common), thickened and they can have trabecula or eventually more than one layer. Gilliland (1993).

## Discussion

The ossicles described herein consist of numerous anchors, anchor plates, wheels, buttons, endplates, plates, tables, and rods. These ossicles were identified into almost all orders of Holothuroidea.

The previous record of holothuroids from Campos Basin (entire individuals) pointed out to the occurrence of 16 species (Moura, 2016). However, eight of the occurrences were found between 938-2057m, beyond our scope (up to 500m). In the other hand, the species *Holothuria (Cystipus) pseudofossor* Deichmann (1930), *Holothuria (Vaneyothuria) lentiginosa brasiliensis* Tommasi & de Oliveira, 1976 *Molpadia parva* (Théel, 1886), *Psolus thandari* Martins & Tavares (2019) and *Psolidium nanoplax* Martins & Tavares (2020), that occurs under 500m were not found (table 1). The present paper shows the occurrence at least of eight species. Surprisingly, the calcareous ring, a robust structure was not found in the analyzed samples as well as noted by Gilliland (1992) regarding to the fossil records.

[Please insert Table 1 here.]

## Isolated Holothurian Ossicles As A Taxonomic And Paleoenvironmental Indicator

Traditionally, the taxonomy of recent Holothuroidea is performed beyond a morphological and-or molecular analysis of full specimens. However, samples of disarticulate ossicles can be used for species identifications. Of course, often it is only possible to recognize the occurrence of large taxonomic groups, without the possibility of specifying the taxa. Even so, there is a significant of taxonomic information to be extracted.



From a paleoenvironmental perspective, sea cucumbers are very useful because there is a diverse and widely distributed extant fauna upon which to infer distributions in the past. Also, the information about its depth, ecological and habitat preference provides a powerful local information.

## Declarations

### Acknowledgements

The authors wish to express their thanks to R. Kowsman (CENPES/Petrobras) and the Petrobras Core Repository staff (Macaé/Petrobras) for providing the sediment core used in this research. We are grateful to Guilherme Pedrão who edited the map.

### Funding

LM thanks to pos-doctoral grant #2021/06442-1, São Paulo Research Foundation (FAPESP). LM thanks to Paleontological Society, Sepkoski Grants

### Author contributions

Conceptualization (LM); Methodology (LM, FT); Formal analysis (LM, FT); Investigation (LM); Writing original draft (LM); Writing, review and editing (LM, KC, FT); Resources (LM, KC, FT); Funding acquisition (LM, KC, FT).

### ORCID iDs

Luciana Martins: 0000-0002-8107-3265.

Karen Costa: 0000-0002-4757-0524

Felipe Toledo: 0000-0001-6959-2065

### Declaration of conflicting interests

The authors report no competing interests as defined by The Holocene, or other interests that might be perceived to influence the interpretation of the article. The authors have no non-financial competing interests, or other interests that might be perceived to influence the interpretation of the article.

## References

1. Ancona-Lopez AA (1957) Sobre holotúrias do litoral sul brasileiro Boletim da Faculdade de Filosofia, Ciências e Letras, Universidade de São Paulo. *Zoologia* 21:5–54.
2. Bertels A (1965) Noticia sobre el hallazgo de restos d equinodermos em el Paleoceno de General Roca (Pcia. Rio Negro). *Ameghiniana* 4:84–99.

3. Brandt JF (1835) Prodrömus descriptionis animalium ab H. Mertensio. Mertensio in orbis terrarum circumnavigatione observatorum. Petropoli: Sumptibus Academiae.
4. Burmeister H (1837) Handbuch der Naturgeschichte. Zum Gebrauch bei Vorlesungen. Vol. 2, Zoologie. Berlin: Verlag von Theodor Christian Friedrich Enslin
5. Caramés A, Martínez M, Concheyro A, et al. (2019) Holothuroidea: new records from the Lower Cretaceous of the Agrio Formation, Neuquén Basin, Argentina. An integrated study with foraminifers and calcareous nannofossils, Alcheringa. *Alcheringa* 43:580–596.
6. Deichmann E (1930) The Holothurians of the Western Part of the Atlantic Ocean. Bull. *Bulletin of the Museum of Comparative Zoology* 71: 43–236.
7. Freire CAO, Grohmann PA (1989) *Leptosynapta brasiliensis*: a new species of synaptid holothurian (Echinodermata) from a sandy beach in southeastern Brazil. *Revista Brasileira de Zoologia* 6:719–723.
8. Frizzell DL and Exline H (1955) Monograph of Fossil Holothurian Sclerites. *Bulletin. University of Missouri, School of Mines and Metallurgy (Technical Series)* 89:1–204.
9. Gallo, N.D., Cameron, J., Hardy, K., Fryer, P., Bartlett, D.H., Levin, L.A., 2015. Submersible- and lander-observed community patterns in the Mariana and New Britain trenches: influence of productivity and depth on epibenthic and scavenging communities. *Deep Sea Research* 1 99: 119–133.
10. Gilliland PM (1992) Holothurians in the Blue Lias of southern Britain. *Palaeontology* 35: 159–210.
11. Gilliland PM (1993) The skeletal morphology, systematics and evolutionary history of holothurians. *Special Papers in Palaeontology* 47:1–147.
12. Haeckel E (1896) Systematische Phylogenie der Echinodermen. pp. 348–504. In: Systematische Phylogenie der Wirbellosen Thiere (Invertebrata): Zweiter Teil des Entwurfs einer systematischen Stammengeschichte. Reimer, Berlin. 720 pp.
13. Haude R (1995a) Echinodermen aus dem Unter-Devon der argentinischen Preakordillere. *Neues Jahrbuch für Geologie und Paläontologie* 197:37–86.
14. Haude R (1995b) Die Holothurien-Konstruktion: Evolutionsmodell und ältester Fossilbericht. In W-E Reif (ed), Festschrift, Herrn Professor Adolf Seilacher zur Vollendung des 70. Lebensjahres am 24. Februar 1995 gewidmet. *Neues Jahrbuch für Geologie und Paläontologie* 195:181–198.
15. Haude R (1997) Nudicorona, eine devonische Holothurie. *Fossilien* 14:50–57.
16. Heding SG (1928) Papers from Dr. Th. Mortensen's Pacific Expedition 1914–16. XLVI. Synaptidae. *Videnskabelige Meddelelser fra Dansk Naturhistorisk Forening Kjøbenhavn* 85:105–323.
17. Hyman LH (1955) *The invertebrates: Echinodermata*. McGraw-Hill Book Co., Inc.; New York, The coelome Bilateria.
18. Lesueur CA (1824) Descriptions of several new species of Holothurians. *Journal of the Academy of Natural Sciences of Philadelphia* 4:155–163.
19. Ludwig H (1881) Über eine lebediggebärende Synaptide und zwei andere Holothurienarten der Brasilianischen Küste [On a living Synaptide and two other Holothurian species of the Brazilian

- coast]. *Archives de Biologie* 2:41–58.
20. Martins L, Tavares M (2019) Two new species of *Psolus* Oken from Brazil (Holothuroidea: Psolidae), with neotype designation and redescription of *Psolus vitoriae* Tommasi, 1971, and a key to the southwestern Atlantic and Magellanic species. *Zootaxa* 4563:531–546.
  21. Martins L and Souto C (2020) Taxonomy of the Brazilian Apodida (Holothuroidea), with the description of two new genera. *Marine Biology Research* 16: 219–255.
  22. Martins L, Tavares M. (2020) First Record of Psolid Sea Cucumber *Psolidium* (Holothuroidea: Dendrochirotida: Psolidae) from the Brazilian Coast, with the Description of Two New Species. *Zoological Studies* 59:1–11.
  23. Miller AK, Kerr AM, Paulay G et al. (2017) Molecular phylogeny of extant Holothuroidea (Echinodermata). *Molecular Phylogenetics and Evolution* 111: 110–131.
  24. Moura RB (2016) Taxonomia e distribuição de holoturias (Echinodermata, Holothuroidea) do mar profundo brasileiro. Tese de doutorado. Universidade Federal de Pernambuco, UFPE, Brasil. 220p.
  25. Moura R.B, Campos, L.S. In: Lavrado, H.P.; Brasil, A.C.S. (Orgs.) *Biodiversidade da região oceânica profunda da Bacia de Campos: megafauna e ictiofauna demersal*. Rio de Janeiro: SAG Serv. pp. 276–277.
  26. Moura R.B, Campos LS, Esteves A.M (2015) Hooked from the deep: a rare new species of *Taeniogyrus* (Holothuroidea, Chiridotidae) from the continental slope of Brazil, southwestern Atlantic. *Zootaxa* 3972:535–548.
  27. Müller J (1850) Anatomische Studien über die Echinodermen [Anatomical studies on the echinoderms]. *Archive für Anatomie, Physiologie und Wissenschaftliche Medicin*. 129–155.
  28. Orbigny A. D. d' (1839). *Foraminifères, in de la Sagra R*. Histoire physique, politique et naturelle de l'île de Cuba. A. Bertrand. 1–224.
  29. Östergren HJ (1898) Das system der Synaptiden (Vorläufige Mitteilung). Öfversigt af Kongliga Vetenskaps- Akademiens Förhandlingar 55:111–120.
  30. Pawson DL, Vance DJ, Ahearn C (2001) Western Atlantic sea cucumbers of the order Molpadiida (Echinodermata: Holothuroidea). *Bulletin Biological Society, Washington* 10: 311–327.
  31. Pedrão GA, Hiram MV, Tomazella MO, Albuquerque ALS, Chiessi CM, Costa KB and Toledo FAL (2022) Marine Paleoproductivity From the Last Glacial Maximum to the Holocene in the Southwestern Atlantic: A Coccolithophore Assemblage and Geochemical Proxy Perspective. *Frontiers in Earth Science* 10: 846245.
  32. Reich M (2013) How many species of fossil holothurians are there? In: C Johnson (ed), *Echinoderms in a Changing World*. Boca Raton/London, CRC Press, Taylor & Francis Group. 23–51.
  33. Samyn, Y, Appeltans W, Kerr A.M (2005) Phylogeny of *Labidodemas* and the *Holothuriidae* (Holothuroidea: Aspidochirotida) as inferred from morphology. *Zoological Journal of the Linnean Society* 144: 103–120.

34. Semper C (1867–1868) Holothurien. In Semper C (ed.), *Reisen im Archipel der Philippinen*. Zweiter Theil. Wissenschaftliche Resultate, vol. 1. Leipzig: W. Engelmann. [1867: 1–100, pls. 1–25; 1867/1868: 101–176, pls. 26–38; 1868: 177–280, pls. 39–40].
35. Soodan KS (1991) Holothurian sclerites from the Western Indian Shelf sediments, Arabian Sea. *Geoscience Journal* 12: 1–11.
36. Soodan KS (1977) Holothurian sclerites from the Recent sediments. *Proceedings of the Indian Colloquium on Micropalaeontology and Stratigraphy* 4: 104–109.
37. Tinoco IM (1963) Fragmentos de equinodermas do Paleoceno de Pernambuco. Universidade do Recife. *Archivos de Geologia* 4: 49–63.
38. Tommasi L.R, Oliveira E (1976) Equinodermes do Brasil. V. Sobre algumas espécies coletadas durante viagens do N/Oc. “Prof. Besnard”. *Boletim do Instituto Oceanográfico da Universidade de São Paulo* 25: 77–100.
39. Tommasi LR (1971) Equinodermes do Brasil. I. Sobre algumas espécies novas e outras pouco conhecidas para o Brasil. *Boletim Instituto Oceanográfico, São Paulo* 20: 1–23.
40. Verrill AE (1874) Report upon the invertebrate animals of Vineyard Sound and the adjacent waters, with an account of the physical characters of the region. *Reports of the United States Commission of Fisheries* 295–778.
41. WoRMS (2023) Holothuroidea. Accessed Through: World Register of Marine Species at <<http://www.marinespecies.org/aphia.php?p=taxdetails&id=1036233> on 2023-02-22

## Tables

Table 1 is available in the Supplementary Files section.

## Figures

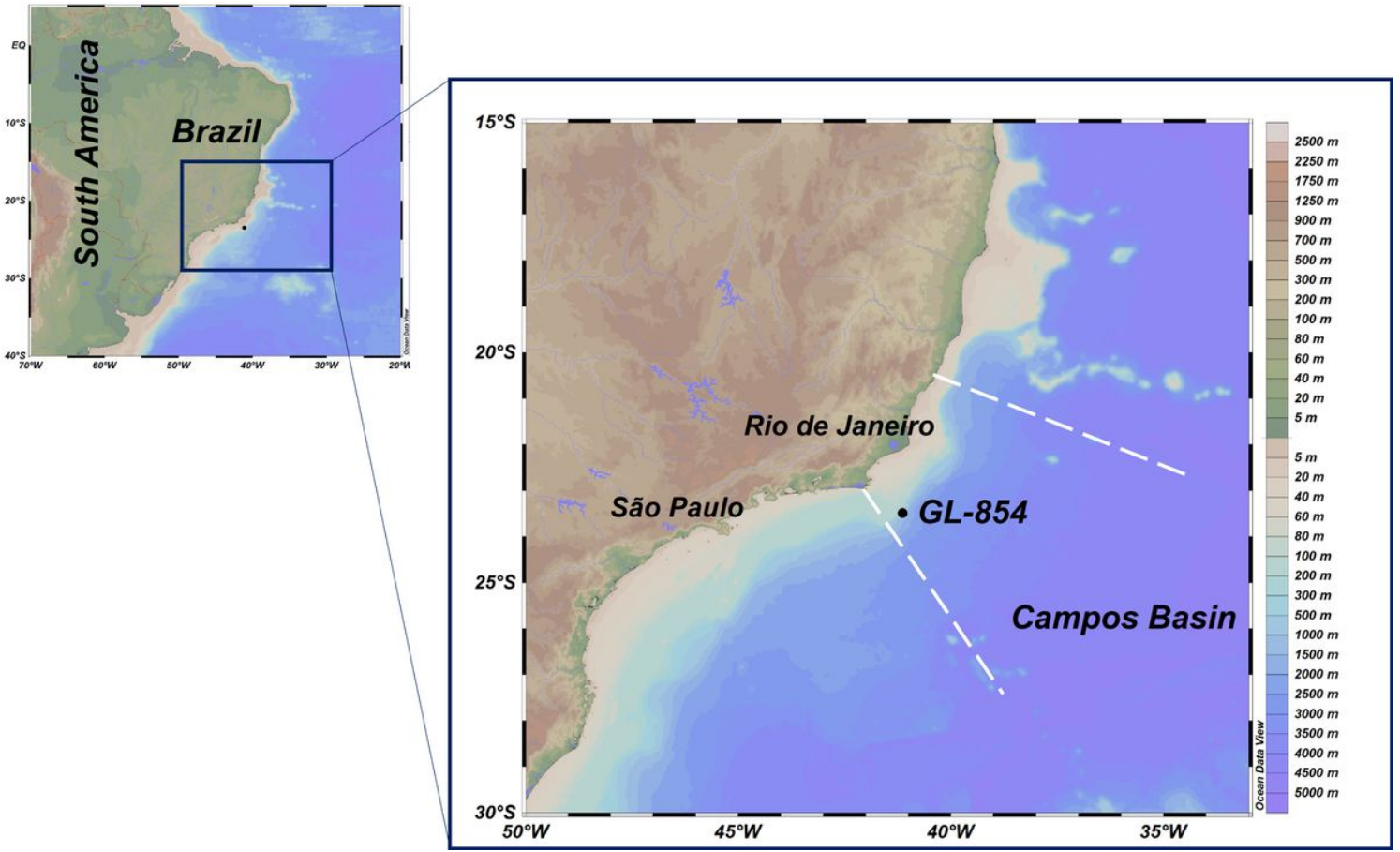
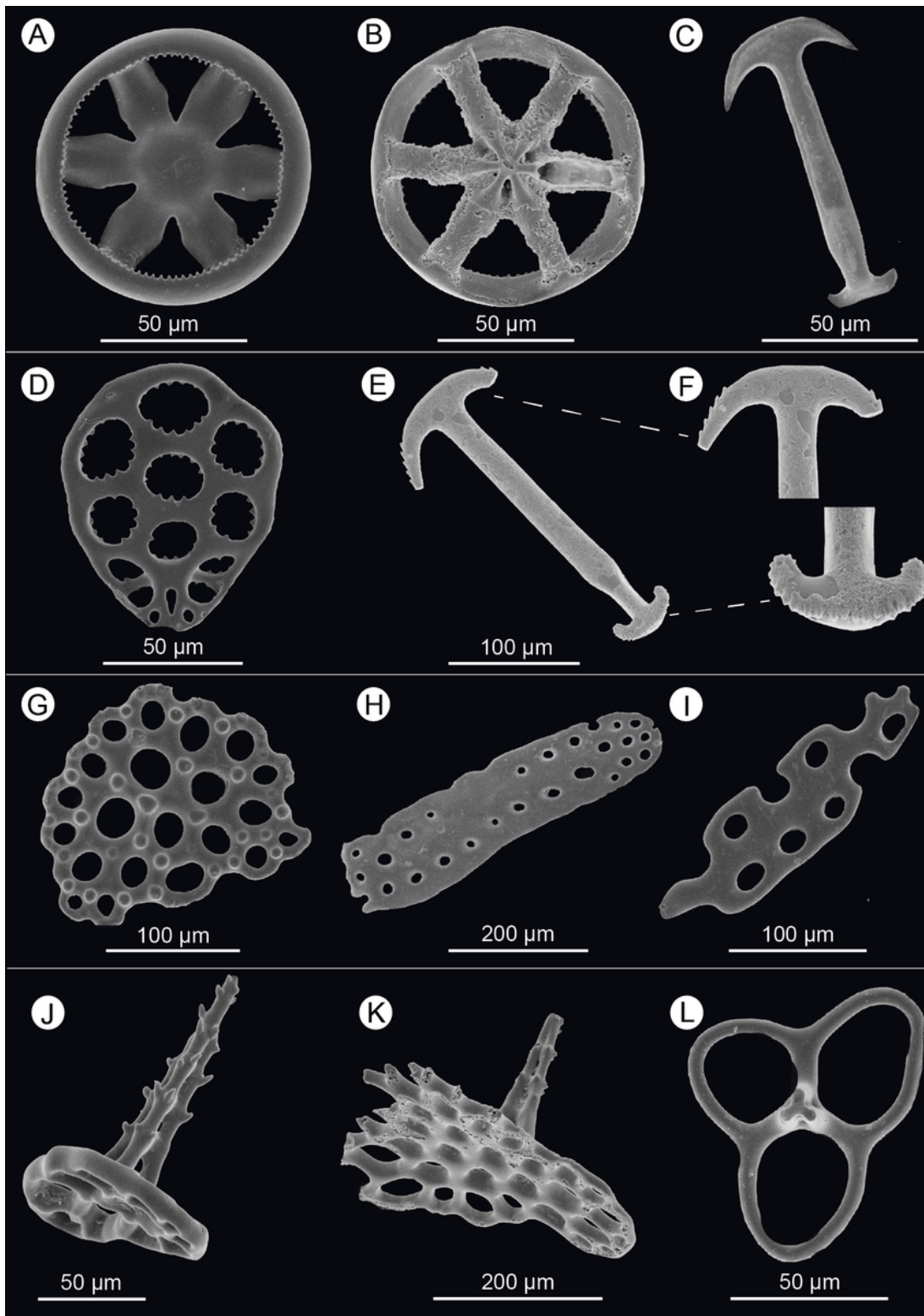


Figure 1

GL-854 Core location. Dashed lines delimit the Campos Basin.



**Figure 2**

Holothuroidea ossicles recovered from core GL 854. (a-b) Wheels from Chiridotidae; (c-d) anchor and anchor plate from *Symaptidae* sp.1; (e) anchor and (e) detail of anchor arms (above) and stock (below) from *Symaptidae* sp.2; (g) knobbed plate from *Psolidae*; (h) flattened rod from *Cucumariidae*; (i) *Hoolothuriidae* button; (j-k) three pillared table from *Eupyrgus* sp. and (l) three pillared table from *Molpadia* sp.

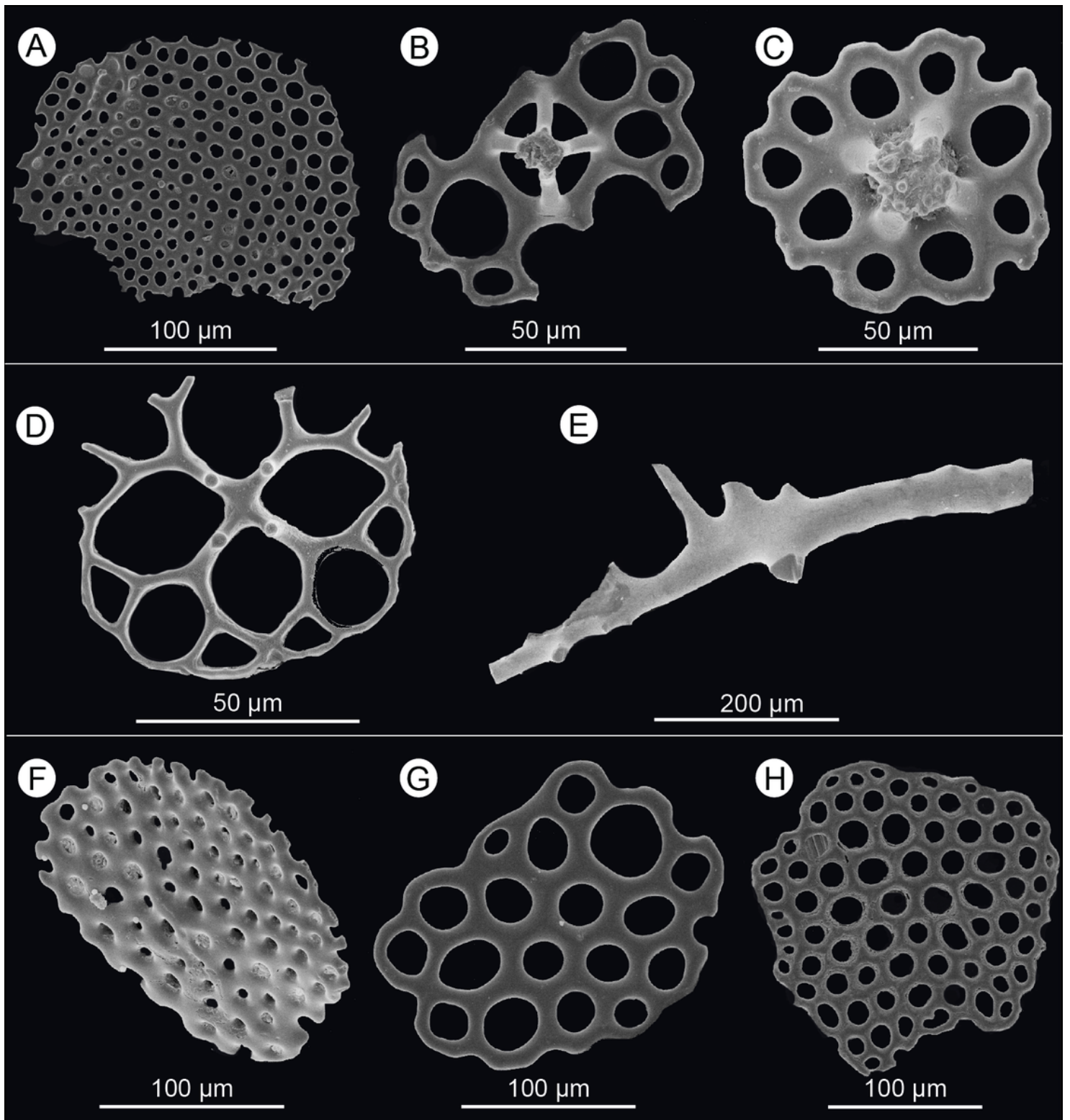


Figure 3

Other Holothuroidea ossicles recovered from core GL 854. (a) end-plate; (b-d) four pillared table; (e) rod; (f-h) plates.

## Supplementary Files

This is a list of supplementary files associated with this preprint. Click to download.

- [Table1..xlsx](#)