

SCAMIT Voucher Sheet

Species: *Nuculana* sp B SCAMIT 2013

Group: Nuculanidae

Vol. 30 No. 5&6

Date examined: January 3, 2013

Vouchered by: P. Valentich-Scott & K. Barwick

Material Examined: 1 spm: LACSD Bight 2003 Sta. 4378, 271 m, 18AUG2003
1 spm. CSD Bight 2008 St. 7045, 261 m, 18JUL2008
2 spm. CLA,EMD SMB, Sta 7428, 400 m, 15JUL2008
3 spm. CSD Bight 2003, Sta. 5034, 394 m, 4AUG03, K. Barwick Cat. #1862.1
1 spm. OCSD Sta, ?, 300 m JUL2004, OCSD Voucher #1573

Synonyms: *Nuculana leonina* of authors SCB not (Dall, 1896)
Nuculana navisa of OCSD not (Dall, 1916)
Nuculana sp B SCAMIT 2010 *fide* SCAMIT, 2012 (see Comments below)

Description: Shell compressed with an elongated narrow rostrum. Rostrum slightly recurved (in largest specimens); truncated posteriorly. Sculpture of evenly spaced raised commarginal ridges ending abruptly at postero-dorsal slope. Prodisoconchs large, smooth and intact. Adherent periostracum silky; gray-tan in color (Fig. 1). Prominent narrow escutcheon. Shallow, narrow lunule. Length to 15 mm.

Related Species: It most closely resembles *Nuculana navisa* (Dall 1916). Coan, et al. (2000) describe *N. navisa* as, "Large specimens inflated; small specimen compressed." All specimens of *N. sp B* are compressed and have a less recurved rostrum. *Nuculana leonina* (Dall, 1896) is less elongated with a more rounded rostrum. It has much wider spaced commarginal sculpturing which is often eroded in larger specimens. The dehiscent preiostracum is darker (Fig. 2) than *Nuculana* sp B.

Distribution: Point Loma to Santa Monica Bay, California; 261 – 400 m.

Comments: *Nuculana* sp B was first proposed at a SCAMIT meeting on October 19, 2009. The minutes from this meeting were actually published in 2010 (SCAMIT, 2009), which included the first publication of the images in figure 1, herein. This is a date change only.

Literature: **Coan, Eugene V., Paul Valentich-Scott and Frank R. Bernard. 2000.** Bivalve Seashells of Western North America: Marine Bivalve Mollusks from Arctic Alaska to Baja California. Santa Barbara Museum of Natural History, Santa Barbara, California. 764 pp.

SCAMIT. 2009. SCAMIT Newsletter, 19 October 2009. Vol. 28, No. 3&4, pg. 4-6. (2010).

SCAMIT. 2012. A Taxonomic Listing of Benthic Macro- and Megainvertebrates from Infaunal & Epibenthic Monitoring Programs in the Southern California Bight, Edition 7. 137 pp. (July 1, 2012).

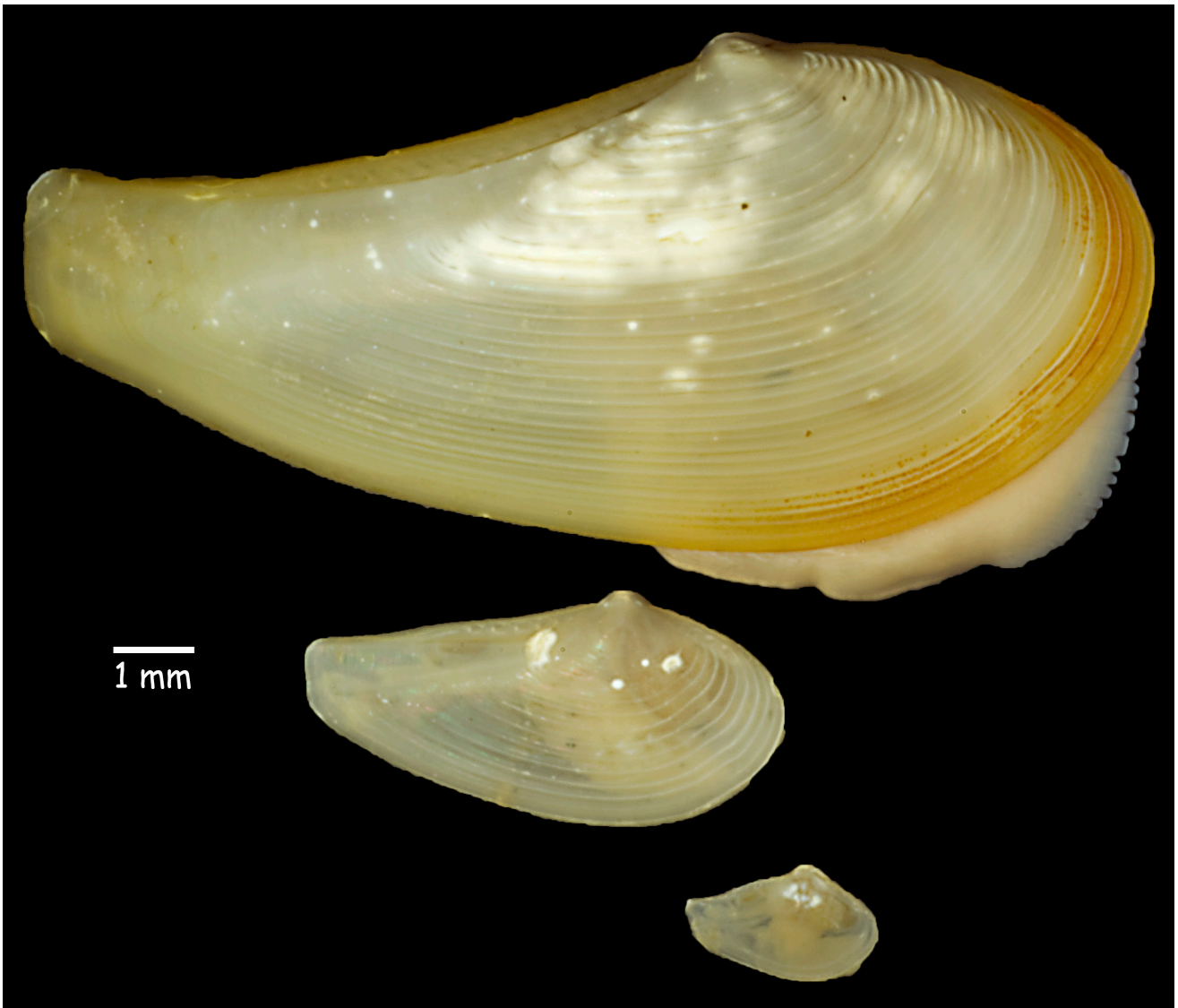


Fig. 1—*Nuculana* sp B, CSD Bight 2003 Sta. 5034, 394 m, 4AUG03, K. Barwick Cat. #1862.1 (from SCAMIT, 2009)



Fig. 2 – *Nuculana leonina*, Cascadia Slope, EBS-64, 950 m, K. Barwick personal collections (from SCAMIT 2009)