



Two new species of ectinosomatid copepods (Harpacticoida: Ectinosomatidae) from the Caribbean coast of Colombia

Dos especies nuevas de copépodos ectinosomátidos (Harpacticoida: Ectinosomatidae) de la costa caribeña de Colombia

Eduardo Suárez-Morales^{a,*} and Juan M. Fuentes-Reinés^b

^a El Colegio de la Frontera Sur, Apartado postal 424, 77014 Chetumal, Quintana Roo, Mexico

^b Universidad del Magdalena, Grupo de Investigación en Limnología Neotropical. A.A 731 Santa Marta, Magdalena, Colombia

Received 21 April 2014; accepted 8 September 2014

Abstract

Biological samples from the lagoonal system Laguna Navío Quebrado, Caribbean Colombian coast, yielded 2 undescribed species of harpacticoid copepods of the family Ectinosomatidae. The first species, *Halectinosoma arangureni* sp. nov., is most closely related to *H. langi* Wells, 1967, *H. curticorne* (Boeck, 1873) and *H. abyssicola* (Bodin, 1968), but diverges from these congeners in: 1) the length-width ratio of the maxillipedal basis; 2) the outer caudal seta(II)/caudal ramus length ratio; 3) details of the mandible palp and blade; 4) the length of the inner exopodal seta of P5; 5) the accessory seta on the male P5 exopod, and 6) a T-shaped incision on the male third urosomite. The second species, *Pseudobradya gascae* sp. nov. closely resembles *P. robusta* Sars, 1910 and *P. barroisi* (Richard, 1893), but diverges from these species by: 1) the number of antennular segments in the female; 2) the absence of a seta on the antennary EXP2; 3) proportions of the maxilliped; 4) the relative length of P1EXP; 5) caudal seta III/caudal ramus length ratio, and 6) the unusually long middle seta of P5EXP. Both genera are recorded for the first time in Colombia.

All Rights Reserved © 2015 Universidad Nacional Autónoma de México, Instituto de Biología. This is an open access item distributed under the Creative Commons CC License BY-NC-ND 4.0.

Keywords: *Halectinosoma*; *Pseudobradya*; Harpacticoids; Benthic copepods; Navío Quebrado Lagoon

Resumen

A partir de muestras biológicas del sistema Laguna Navío Quebrado en la costa colombiana del Caribe, se encontraron 2 especies no descritas de copépodos harpacticoides de la familia Ectinosomatidae. La primera, *Halectinosoma arangureni* sp. nov., está más cercanamente relacionada con *H. langi* Wells, 1967, *H. curticorne* (Boeck, 1873) y *H. abyssicola* (Bodin, 1968), pero difiere de estos congéneres en: 1) la proporción largo/ancho del basis del maxilípido; 2) la longitud relativa de la seta caudal externa (II) respecto a la rama caudal; 3) detalles del palpo mandibular y del borde gnatal; 4) la longitud de la seta exopodal interna de la P5 de la hembra; 5) la seta superficial del EXP de la P5 del macho, y 6) incisión en forma de T en el tercer urosomita del macho. La segunda especie, *Pseudobradya gascae* sp. nov., se asemeja a *P. robusta* Sars, 1910 y *P. barroisi* (Richard, 1893), pero difiere de estas especies por: 1) el número de segmentos antenulares en la hembra; 2) la ausencia de una seta en el EXP2 de la antena; 3) la proporción largo/ancho del maxilípido; 4) la longitud relativa del P1EXP; 5) la longitud de la seta caudal III con respecto a la rama caudal, y 6) la inusual seta medial larga del EXP de la P5 de la hembra. Ambos géneros se registran por primera vez en Colombia.

Derechos Reservados © 2015 Universidad Nacional Autónoma de México, Instituto de Biología. Este es un artículo de acceso abierto distribuido bajo los términos de la Licencia Creative Commons CC BY-NC-ND 4.0.

Palabras clave: *Halectinosoma*; *Pseudobradya*; Harpacticoides; Copépodos bentónicos; Laguna Navío Quebrado

* Corresponding author.

E-mail address: esuarez@ecosur.mx (E. Suárez-Morales).

Introduction

The harpacticoid copepod family Ectinosomidae was established by Sars (1904), and the name was corrected as Ectinosomatidae by Moore (1978). Most ectinosomatids inhabit sublittoral marine sediments ranging from coarse sands to flocculent muds (Clément & Moore, 2000). The family originated from marine environments where radiation and diversification were successful (Kihara & Huys, 2009), but several ectinosomatid genera (i. e., *Rangabradya* Karanovic & Pesce, 2001; *Ectinosoma* Boeck, 1864; *Microsetella* Brady & Robertson, 1873; *Pseudobradya* G. O. Sars, 1904; *Pseudectinosoma* Kunz, 1935; *Halectinosoma* Vervoort, 1962; *Arenosetella* Wilson, 1932) can also be recorded from brackish and freshwater systems (Defaye & Dussart, 2011).

Currently, there are 21 valid genera within the Ectinosomatidae, and *Halectinosoma* and *Pseudobradya* are among the most diverse, each containing 65 and 43 nominal species, respectively (Clément & Moore, 2007). The name of the former genus was proposed by Lang (1944) and made available by Vervoort (1962) (Huys, 2009). Both genera are in urgent need of revision (Defaye & Dussart, 2011; Kihara & Huys, 2009) and taxonomic conflicts are still extant involving these groups. Some species of *Pseudobradya* resemble those currently attributed to *Ectinosoma* and *Halectinosoma* and it is probable that several nominal species have been assigned to the wrong genus (Wells, 2007). The lack of complete, detailed descriptions and the absence of types of many species have greatly contributed to the taxonomic confusion and the species-level taxonomy of these genera is still in a state of flux (Clément & Moore, 2007; Huys, Gee, Moore, & Hamond, 1996).

In the Americas, most records of *Halectinosoma* and *Pseudobradya* are from the United States, Puerto Rico, the U.S. Virgin Islands, and Brazil (Jakobi, 1954; Lang, 1965; Reid, 1998; Rouch, 1962; Suárez-Morales, De Troch, & Fiers, 2006). In Colombia, the knowledge on the composition of this harpacticoid family is still lagging; up to now, there are no previous records of species of *Halectinosoma* or *Pseudobradya*. A recent biological survey of the aquatic fauna of a protected coastal lagoon system of northern Colombia yielded several specimens of ectinosomatid harpacticoid copepods. These specimens represent 2 undescribed species, one of each of these 2 genera; both herein described, illustrated, and compared with their congeners.

Materials and methods

Biological samples of benthos and plankton were taken from the Navío Quebrado Lagoon, Colombia (11°25' N, 73°05' W) from April to December 2012, mainly in shallow littoral areas with vegetation (macrophytes and mangrove) but also from open water in areas close to oyster banks. Water salinity was measured with a WTW 3111 conductivity meter. Water samples were collected using a 25 L bucket at both vegetation areas and open water. Samples were filtered with a standard zooplankton net with a 45 µm mesh and fixed and preserved in 70%

ethanol. Dissected specimens and appendages were mounted in glycerine. Drawings of the appendages were prepared at 1000X magnifications with a camera lucida mounted on a standard Olympus CX31 compound microscope. Some specimens were prepared for scanning electron microscopy, which included dehydration through graded ethanol solutions (80, 96, 100%), drying, and coating following standard methods. Observations were performed using a JEOL LV-5900 microscope at El Colegio de la Frontera Sur in Tapachula, Mexico. The specimens were measured in lateral position, from the anterior end of the rostral area to the posterior margin of the caudal rami. Morphological nomenclature follows Huys and Boxshall (1991). The following abbreviations are used in the descriptions: P1-P6, first to sixth swimming legs; EXP, exopod; ENP, endopod. The type specimens were deposited in the collections held at the Museo de Colecciones Biológicas de la Universidad del Atlántico (UARC), Barranquilla, Colombia. Additional specimens are deposited in the Collection of Zooplankton at El Colegio de la Frontera Sur, Chetumal, Mexico (ECO-CHZ).

Descriptions

Order Harpacticoida Sars, 1903

Family Ectinosomatidae Sars, 1903

Halectinosoma Vervoort, 1962

Halectinosoma arangureni sp. nov. (Figs. 1-5)

Type material

Adult female holotype (UARC385M), male allotype (UARC386M), partially dissected, slides, Laguna Navío Quebrado, La Guajira, Colombia, coll. J. Fuentes-Reinés, April-December 2012. Paratypes: 3 females (UARC387M) and 2 males (UARC387M) from same locality, and collector. Two adult females, 2 adult males from same locality, date, and collector, specimens dissected, semi-permanent slides (ECO-CHZ-09265). *Additional material examined.* Ten adult females, 8 adult males in authors' (JF-R) personal collection.

Type locality

Navío Quebrado Lagoon, La Guajira, Colombia (11°25' N, 73°05' W).

Description of female

Habitus as in figure 1A. Body fusiform in dorsal view, prosome gradually tapering anteriorly. Pedigerous somites with subacute lateral pleural projections, weakest in fifth pedigerous somite (Figs. 1C, D). Prosome representing 32-34% of total body length. Total body length measured from tip of rostrum to posterior margin of caudal rami ranging from 448 to 518 µm (average= 499 µm, $n= 15$; holotype: 462 µm). Rostrum articulated at base with cephalosome (Fig. 1C), blunt in lateral view, truncate in ventral view (Fig. 1B). Labrum represented by anteriorly directed spinous projection. Cephalosome and

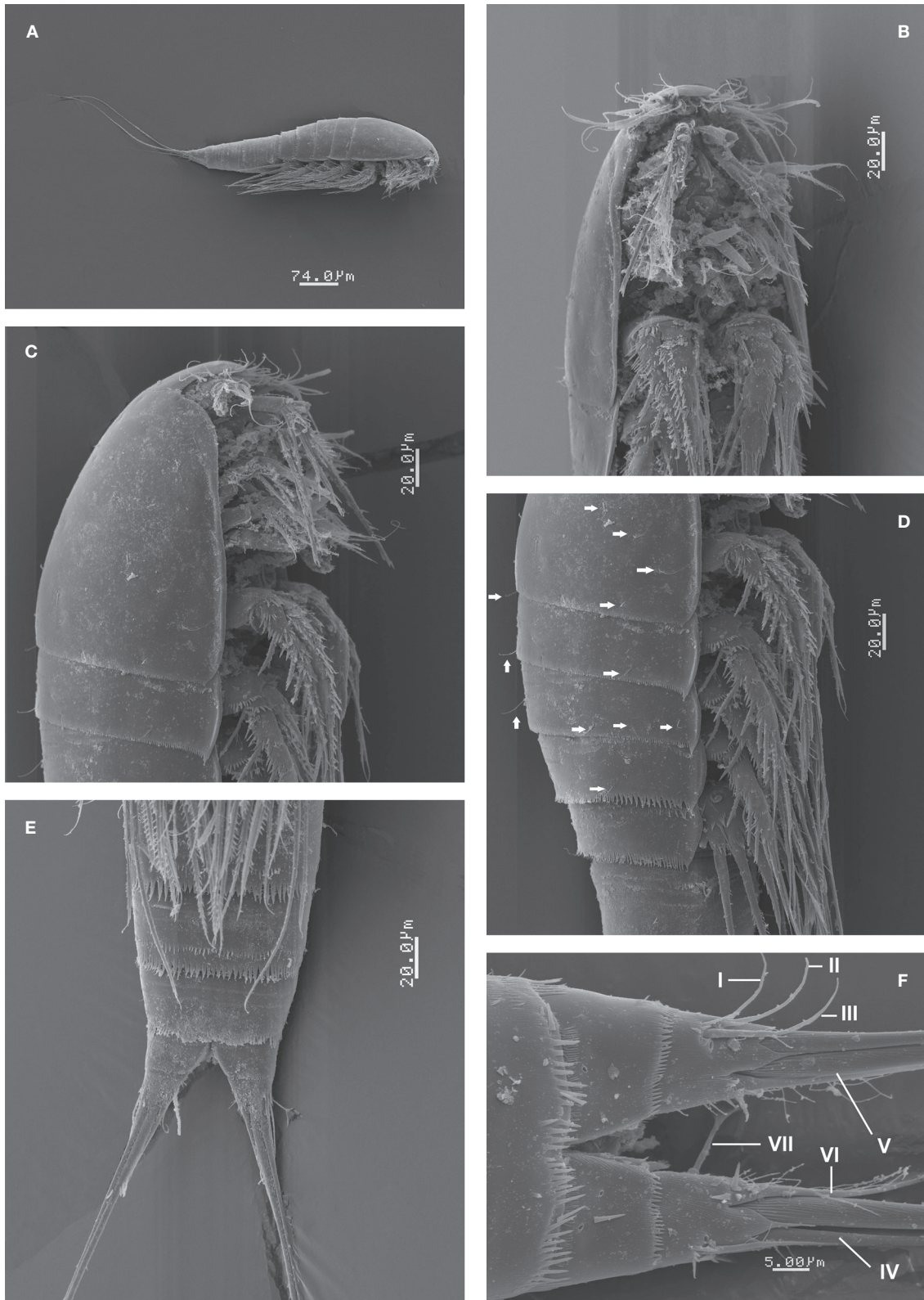


Figure 1. *Halectinosoma arangureni* sp. nov., adult female from Colombia, SEM-prepared specimen: A, habitus, lateral view; B, cephalosome and first thoracic somites, ventral view; C, same, lateral view; D, cephalosome and thoracic somites showing sensillae (arrowed); E, urosomites and caudal rami, ventral view; F, detail of caudal rami showing caudal setae I-VII, ventral view.

pedigerous somites with sparsely distributed sensillae (arrowed in Fig. 1D), U-pores not observed. Posterior margin of pedigerous somites 1-3 with finely spinulated hyaline frill; somites 4 and 5 with coarser hyaline frill and with adjacent transverse rows of spinules (Fig. 1D). Genital double-somite with transverse rows of minute spinules in ventral, lateral and dorsal surfaces plus posterior coarse subulate hyaline frill (Fig. 4D). Posterior margin of first postgenital urosomite with subulate hyaline frill plus 2 rows of slender, minute spinules along ventral surface, and row of spinules (Figs. 1E, 4D). Preanal somite

with 2 rows of minute spinules on ventral surface and hyaline frill. Anal somite with posterior row of fine spinules.

Caudal rami subquadrate, about as long as wide, length/width ratio= 1.0 (Fig. 1F), with distal acute processes arising from insertion of caudal setae. Inner distal margin of rami with a few setules. Setae I-III slender, subequal in length and width; outer caudal seta III 1.9 times as long as caudal ramus. Innermost seta IV thin, lightly setulated, inner terminal seta (V) about 1.3 times as long as outer one (seta IV), slenderer, setae IV and V spinulated distally from midlength and proxi-



Figure 2. *Halectinosoma arangureni* sp. nov., adult female from Colombia: A, antennule; B, antenna; C, mandible palp; D, gnathal blade; E, maxillule; F, maxilla; G, maxilliped; H, caudal ramus, ventral view showing caudal setae I-VII. Scale bars: A-H= 20 μ m.

mal 1/3, respectively. Dorsal seta (VII) about twice as long as caudal ramus (Fig. 2H). Oviparous females bearing 1 sac with 8 eggs.

Antennule

Short, robust, with 6 segments (Fig. 2A).

Armature as follows, s= setae, ae= aesthetascs: 1(1s), 2 (7s), 3(3s (1+ ae)), 4(2s), 5(5s), 6(6s, 1ae).

Antenna

Coxa and basis fused, segment as long as ENP1, with abexopodal seta. ENP 2-segmented; first segment smooth except for subdistal row of spinules; ENP2 with lateral and subdistal rows of strong spinules; with 1 lateral pinnate seta and 5 apical and 1 subapical elements. EXP 3-segmented; first and second segments together about as long as third; proximal exopodal segment EXP1 with short smooth seta, EXP2 with long spinulose seta; EXP3 with 2 apical, unequally long spinulose setae (Fig. 2B). *Mandible*. Basis with 2 slender unequally long setae inserted at distal inner corner. ENP oval, 1-segmented, with 9 setae. EXP represented by small segment bearing 2 subequally long lightly spinulose setae (Fig. 2C). Gnathal blade with 5 acute teeth plus uniserially pinnate dorsal seta (Fig. 2D).

Maxillule

Praecoxal arthrite broad, with proximal row of spinules, distally with 3 spines (2 of them strong) and subdistal seta. Basis with 5 slender setae inserted along inner margin. EXP represented by small subtriangular segment with 2 plumose setae. ENP 1-segmented, with 2 setae (Fig. 2E).

Maxilla

Not strongly geniculate, syncoxa with 3 endites and a spiniform seta. Proximal endite with 4 setal elements, second endite with a strong pinnate seta, third endite with 3 pinnate setae. Basis broader than syncoxa, with medial protuberant endite bearing 3 setal elements, 2 short, stout setae plus 1 slender seta. ENP 3-segmented; ENP1 and ENP2 each with 1 long slender seta; distal segment represented by broad base with 3 setal elements (Fig. 2F).

Maxilliped

Syncoxa short, subquadrate, about 0.3 times as long as basis, with 1 plumose seta reaching beyond distal end of ENP. Basis

elongated, length/width ratio about 3.3; with slender outer setules, inner margin spinulose; ENP 1-segmented, short, with 3 elements (2 strong spinulose setae and 1 slender element) (Fig. 2G).

P1 coxa with rows of minute spinules on anterior surface. Basis with short, stout inner basipodal spine almost as long as ENP1 and slender outer basipodal seta. Basis with transverse rows of spinules on anterior surface and along distal margin, row of stronger spinules at insertion of endopodal ramus. ENP 3-segmented, with inner margin of segments spinulose, outer margin of segments ENP1 and ENP2 setulose, ENP1 without inner seta, ENP2 with single seta. EXP 3-segmented, shorter than ENP; EXP1 and EXP2 without inner seta; EXP1-3 with outer margin spinulose and 5 setal elements (Fig. 3A).

P2-P4 coxae with rows of minute spinules on anterior surface. Basis with spinules distally and with slender outer basipodal seta reaching beyond the distal margin of EXP1. ENP 3-segmented, longer than EXP; ENP1 and ENP2 with inner seta; ENP3 with 5 setal elements. EXP 3-segmented, EXP1 and EXP2 with inner seta; EXP3 with 6 elements (Figs. 3B-D). Setal formula for P1-P4 is presented in Table 1.

Variability

The left P1EXP 2 of one female lacks a seta. P5 with subquadrate EXP separated from baseoendopod by suture on posterior surface; with 5-6 small spinules along suture; with 3 clearly defined naked distal lobes, each with 1 spinulose seta (innermost seta shortest, medial seta longest about 2.4 times as long as innermost seta); with slender, short, surface seta barely reaching beyond distal margin of EXP (Fig. 3E). Inner expansion of baseoendopod reaching halfway of length of inner exopodal margin, with row of inner spinules plus row of spinules at insertion of 2 spinulose setae (innermost endopodal seta slightly longer than outer seta); outer expansion of baseoendopod with long, slender basal seta (Fig. 3E).

Description of male

Body fusiform, with pleural projections of pedigerous somites less pronounced than in female; rostrum rounded; prosome representing 38-43% of total body length. Body length 298-350 μm (average=325 μm , n= 5, allotype = 329 μm).

Antennule short, robust, with 7 segments, thick at base with lobes with long setae (Fig. 4A); armature formula as follows: 1(1s), 2(2s), 3(2s), 4(2s), 5(1s+ae), 6(0), 7(4s). Last segment with distal branched seta (arrowed in Fig. 4A). A2, Mx1, Mx and Mxp (not shown) as in female. Md as in female except for wider teeth on mandibular blade (Fig. 4B).

Second and third urosomites with transverse row of minute spinules on medial ventral surface plus subdistal row of middle-sized spinules and distal subulate hyaline frill on ventral and dorsal surfaces (Figs. 4C, E, 5B). Third urosomite with T-shaped ventral incision (Fig 4C). Preanal somite with proximal row of minute spinules plus distal row of medium-sized spinules. Anal somite as long as preceding somite, with distal row

Table 1
Setal formula of the female of *Halectinosoma arangureni* sp. nov.

	exopod	endopod
P1	I-0; I-1; II,2,1	0-1; 0-1; I,2,2
P2	I-1; I-1; II,2,2	0-1; 0-1; 0,I,2,2
P3	I-1; I-1; II,2,2	0-1; 0-1; I,II,2
P4	I-1; I-1; II,2,2	0-1; 0-1; I,II,2

of minute spinules at insertion of caudal rami. Caudal rami as in female. P1-P4 as in female, with spinulose segments and setae (Fig. 5A). P5. With rows of minute spinules along insertion line proximally. Inner expansion of baseoendopod with 2 subequally long robust smooth setae. Exopod partially fused to baseoendopod, seemingly without suture; exopod with 3 setal elements (innermost seta shortest, middle seta longest); surface of exopod with accessory seta located near insertion of middle exopodal seta (Figs. 3F, 4C).

P6 consisting of a flat spinulose plate with 2 setae, inner seta about 3 times as long as outer seta (arrowed in Fig. 4C).

Etymology

The species is named after the Colombian researcher Dr. Nelson Aranguren, for his extensive work on the zooplankton from aquatic systems of Colombia and for his legacy and leadership of new generations of planktologists.

Remarks

The specimens from Colombia were identified as belonging to the genus *Halectinosoma* by the characters selected by Huys

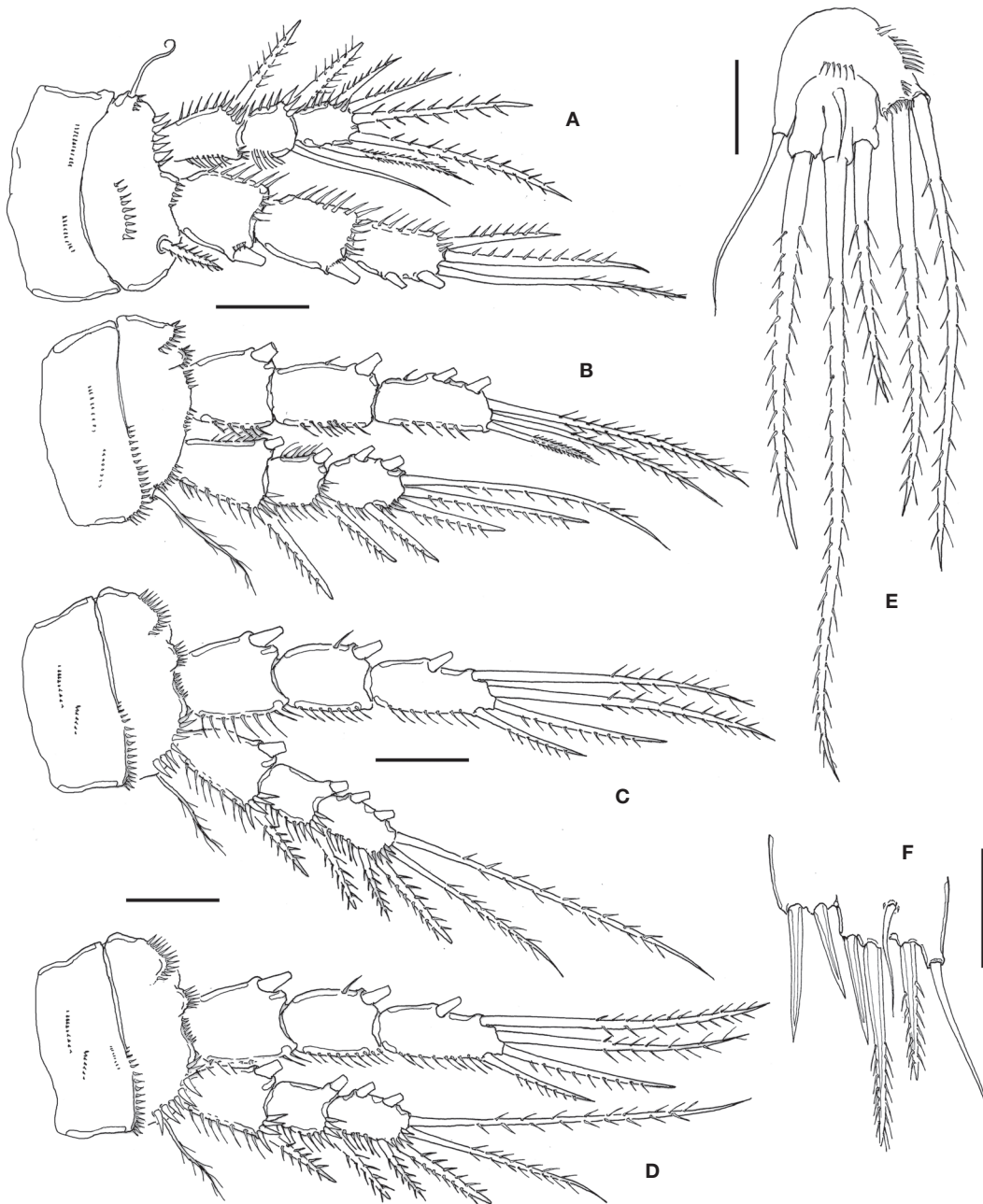


Figure 3. *Halectinosoma arangureni* sp. nov., adult female from Colombia: A, leg 1; B, leg 2; C, leg 3; D, leg 4; E, leg 5; adult male, F, leg 5. Scale bars: A-F= 20 μ m.

et al. (1996) and Wells (2007): 1) the 5-7 segmented antennule, 2) antennary exopod 3-segmented, 3) mandible basis with 3 setae, 4) maxilla not strongly geniculate, 5) slender maxilliped with long basipod and endopod bearing 3 setae, 6) female P5 with 3 setae and surface seta arising from middle of exopodal segment. Following Well's (2007) key to the genera and species of Ectinosomatidae, our specimens key down to a group of species of *Halectinosoma* sharing a combination of several

characters including: 1) P1-4 with 5,6,6,6 setal elements on the third exopodal segment; 2) P1-P4 with 5 setae on the third endopodal segment; 3) inner seta on the first exopodal segment absent only on P1; 4) length/width ratio of the maxilliped basis between 2 and 4, and 5) the inner endopodal seta of P5 is longer than the outer one (Wells, 2007). This group of species includes *H. abyssicola* (Bodin, 1968), *H. langi* Wells 1967, and *H. curti-corne* (Boeck, 1873).

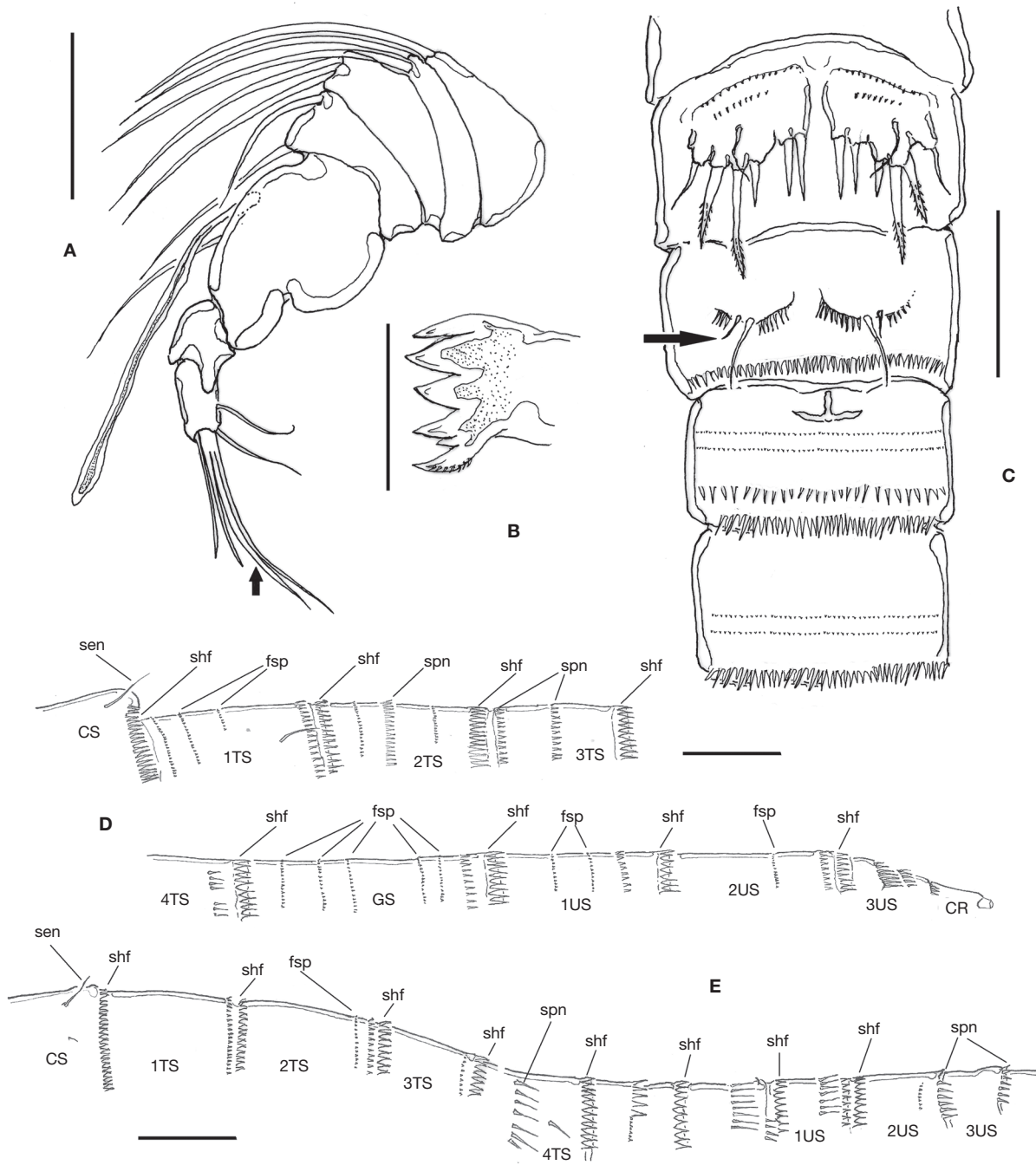


Figure 4. *Halectinosoma arangureni* sp. nov., adult male from Colombia: A, antennule; B, gnathal blade; C, urosomites showing P5 and P6, ventral view, outer seta of leg 6 arrowed; D, cuticular ornamentation of the female, lateral view showing subulate hyaline frills (shf), spinules (spn), sensillae (sen), fine spinules (fsp) in body somites: cephalic somite (CS), thoracic somites 1-4 (1-4TS), genital double-somite (GS), and urosomites 1-3 (US1-3); E, same, male. Scale bars: A = 25 μ m; B = 100 μ m; C = 20 μ m; D, E = 20 μ m.



Figure 5. *Halectinosoma arangureni* sp. nov., adult male from Colombia, SEM-prepared specimen: A, pedigerous somites and P1-P4, ventral view; B, another specimen showing ornamentation of urosomites, ventral view.

The new species *H. arangureni* sp. nov. can be separated from these 3 species by: *a*) the length/width ratio of the basipodal segment of the maxilliped (length/width ratio about 4.0 in both *H. langi* (Wells, 1967) and *H. abyssicola* (Bodin, 1968) and 2.0 in *H. curticorne* (Poppe, 1885, Taf. VI, Fig. 10), but 3.3 in *H. arangureni* sp. nov. (Fig. 2G)); *b*) the armature of the exopodite of the mandibular palp (with 3 setae in *H. langi* (Wells, 1967, Fig. 21E) and *H. curticorne* (Poppe, 1885, Taf. VI, Fig. 7), but with 2 setae in *H. arangureni* sp. nov. and *H. abyssicola* (Bodin, 1968 pl. II)). According to Wells (2007), *H. abyssicola* is easily distinguishable from these other species by having an extremely long outer seta of the inner expansion of the P5 ENP, about 4 times as long as the inner seta. Also, *H. curticorne* has a distinctive pigmentary spot on the first antennary segment, this spot is absent in the other species compared here.

The first exopodal segment of the antenna is unarmed in *H. langi* (Wells, 1967, Fig. 21D), *H. abyssicola* (Bodin, 1968, pl. IX) and *H. curticorne* (Poppe, 1885, Taf. VI, Fig. 6) whereas a single slender seta is present in the new species, *H. arangureni* (Fig. 2B). The length/width ratio of the caudal rami is about 1.0 (as long as wide) in both *H. langi* (Wells, 1967, Fig. 21A) and *H. arangureni*, and reaches 1.2 in *H. abyssicola* (Bodin, 1968, pl. XI) and 2.0 in *H. curticorne* (Poppe, 1885, Taf. VI, Fig. 1). Also, the caudal seta III/caudal ramus length ratio is about 1.0 in *H. langi* (Wells, 1967, Fig. 21A), 0.6 in *H. curticorne* (Poppe, 1885, Taf. VI, Fig. 1), 0.7 in *H. abyssicola*

(Bodin, 1968, pl. XI), but 1.9 in *H. arangureni*, the species with the longest such seta among these species ($n=10$). The relative length of the outer endopodal setae of the female P5 with respect to the adjacent innermost exopodal seta is different in these species. In *H. langi* the innermost exopodal seta reaches the distal end of the outer endopodal seta (Wells, 1967, Fig. 21J), in *H. curticorne* (Poppe, 1885, Taf. VI, Fig. 12; Chislenko, 1967, Fig. 9) the outer endopodal seta reaches about halflength of the innermost exopodal seta, and in *H. arangureni* the endopodal seta reaches about $\frac{3}{4}$ the length of the exopodal seta (Fig. 3E). Furthermore, the P5 accessory seta is shorter in the female of both the new species (Fig. 3E) and *H. curticorne* (Poppe, 1885, Taf. VI, Fig. 12) than in *H. langi* (Wells, 1967, Fig. 21J).

The male of *H. arangureni* sp. nov. differs from the males of the other 2 species in having a T-shaped incision in the third urosomite (Fig. 4C) which is differently shaped and in the second urosomite in *H. langi* (Wells, 1967, Fig. 22H) and *H. curticorne* (Chislenko, 1967, Fig. 9). The accessory seta of the male P5EXP is absent in *H. langi* (Wells, 1967, Fig. 22E), but present in the new species (Fig. 3F) and in *H. curticorne* (Chislenko, 1967, Fig. 9). The exopod of the male P5 is distinct from the baseopod in *H. curticorne*, but fused in the new species (Fig. 3F). The male P6 has a single seta in *H. langi* (Wells, 1967, Fig. 22F), but 2 in the new species (Fig. 4C). The male of *H. abyssicola* remains unknown and cannot be compared with the male of *H. arangureni* sp. nov.

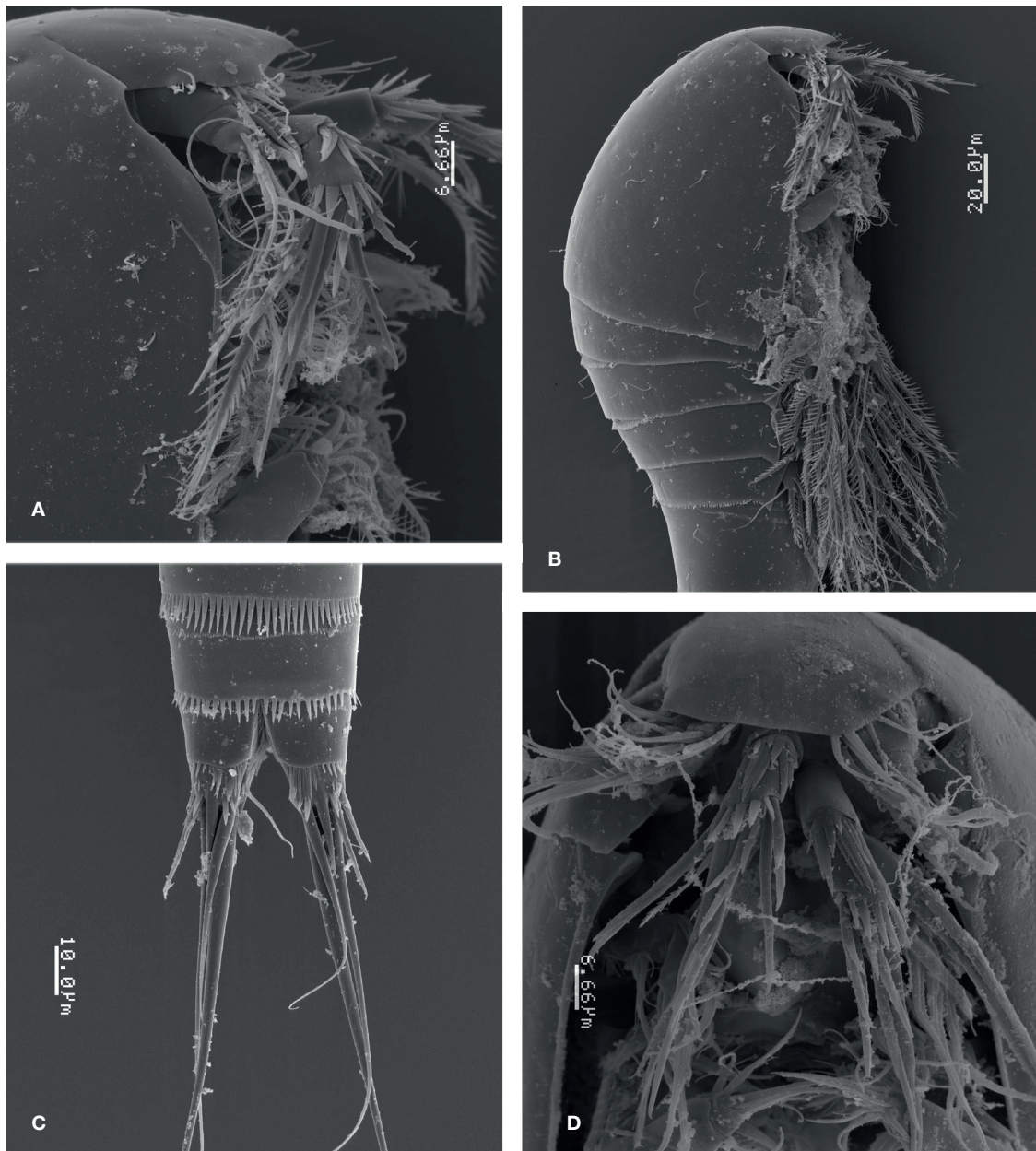


Figure 6. *Pseudobradya gascae* sp. nov., adult female from Colombia, SEM-prepared specimen. A, rostral area showing articulation of rostrum, lateral view; B, prosome, lateral view; C, last urosomites and caudal rami, ventral view; D, cephalosome showing rostral area, ventral view.

Pseudobradya Sars, 1904

Pseudobradya gascae sp. nov. (Figs. 6-9)

Type material

Adult female holotype from Laguna Navío Quebrado, La Guajira, Colombia, coll. J. Fuentes-Reinés, April-December 2012, undissected, ethanol-preserved (UARC388M). Paratypes: 1 female plus 2 females (UARC389M), partially dissected, semi-permanent slides. Additional material: 10 adult females in first author's (JF-R) personal collection. Three adult females from same locality and dates, dissected, semi-permanent slides (ECO-CHZ-09266).

Type locality

Navío Quebrado Lagoon, La Guajira, Colombia (11°25' N, 73°05' W).

Description of female

Body fusiform in dorsal view, tapering posteriorly. Total body length measured from tip of rostrum to posterior margin of caudal rami ranging from 308-350 μm (average 319.6 μm , $n=11$; holotype: 308 μm). Prosome representing 35% of total body length, gradually attenuating anteriorly, cephalosome robust in lateral view (Fig. 6B). Pedigerous somites with weak subacute

pleural extensions (Fig. 6B). Rostrum wide, truncate, articulated at base with cephalothorax by sharp suture (Figs. 6A, B). Cephalosome with scattered sensillae on dorsal and lateral surfaces (Fig. 7B), posterior margin of cephalosome smooth. Hyaline frill present along dorsal margin of pedigerous somites 2-4, but lateral margins unornamented. Fifth pedigerous somite with row of small spinules stretching to lateral margin and subulate hyaline frill along posterior margin (Fig. 8H). Genital double-somite and succeeding 3 urosomites each with subulate hyaline frills (Fig. 8H), but with weak ornamentation otherwise. Anal somite with row of long (inner half) and short (outer half) spinules at insertion of caudal rami (Figs. 6C, 8H).

Caudal rami slightly broader than long, furnished with 7 setae: seta I small, stout, setae II and III about 5 times as long as seta I. Terminal setae IV and V well-developed, seta V about

1.3 times as long as seta IV, spinulose along inner margin. Seta VI 1.2 times as long as ramus. Posterior edge of rami dorsally and ventrally terminating with acuminate lappet and with adjacent distal short spinous processes (Figs. 6C, 7A, 8G).

Antennule

Short, robust, with 5 segments. Third segment longest. Armature of antennular segments as follows: 1(1s), 2(5s), 3(10s+(1+ae)), 4(2s), 5(5s+(2+ae)) (Fig. 8A).

Antenna

Basis short, subquadrate. ENP 2-segmented; ENP1 smooth, ENP2 with curved row of spinules proximally, lateral margin

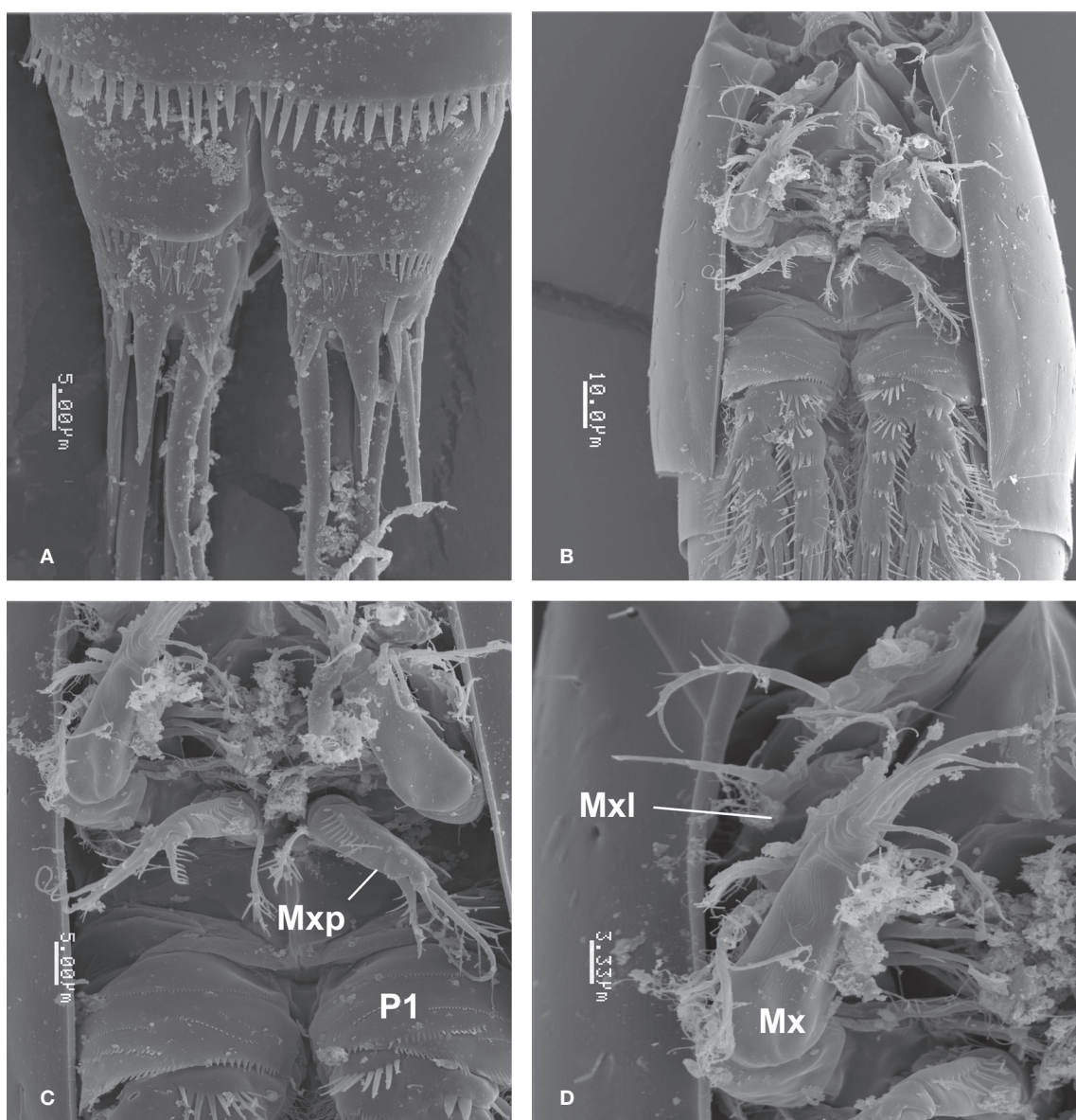


Figure 7. *Pseudobradya gascae* sp. nov., adult female from Colombia, SEM-prepared specimen: A, detail of caudal rami, ventral view; B, cephalosome, ventral view; C, cephalosome showing maxilliped (Mxp) and coxa and basis of P1 (P1), ventral view; D, same, showing maxilla (Mx) and exopodal segment of maxillule (Mxl), ventral view.

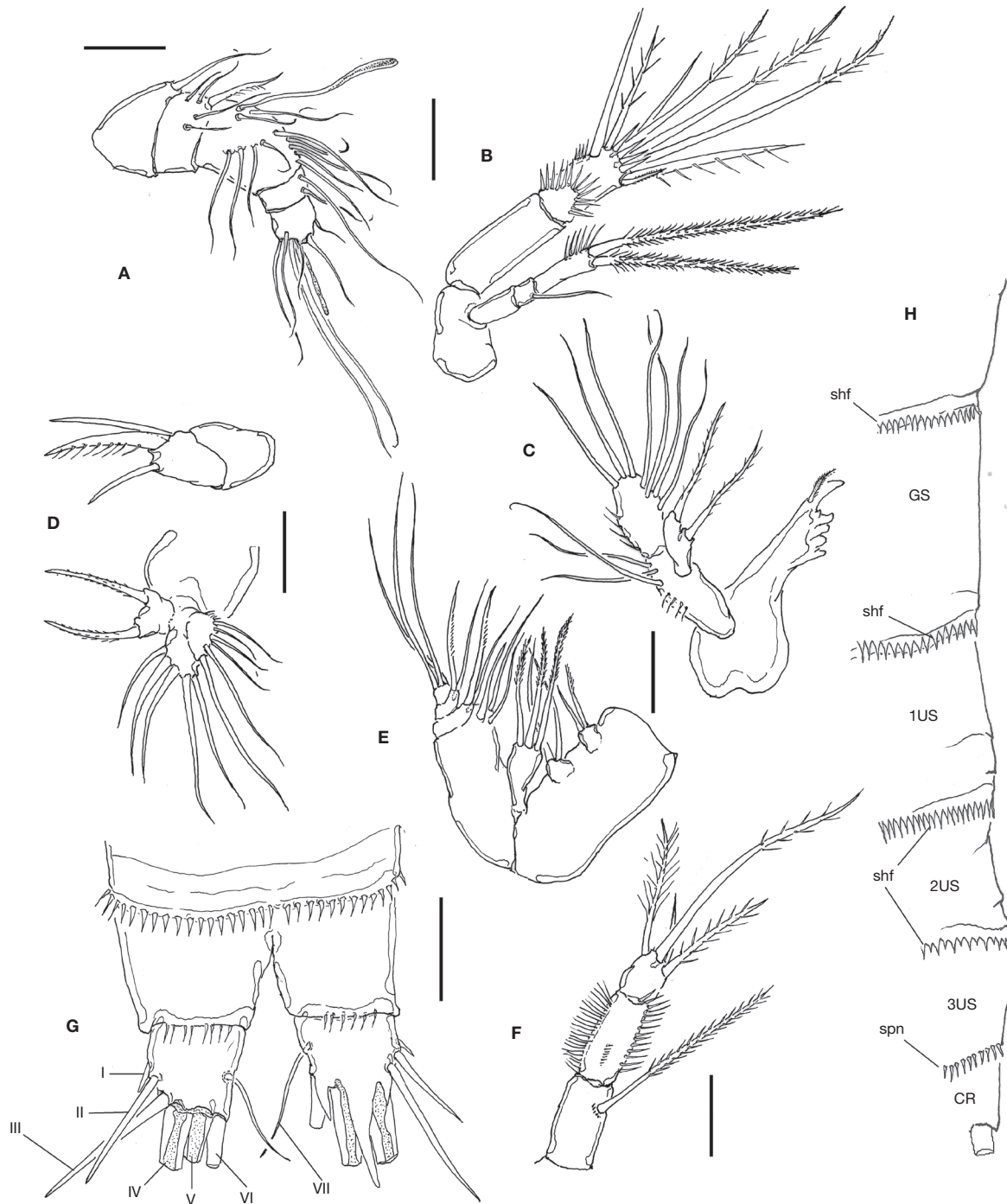


Figure 8. *Pseudobradya gascae* sp. nov., adult female from Colombia: A, antennule; B, antenna; C, mandible; D, maxillule; E, maxilla; F, maxilliped; G, anal somite and caudal ramus, ventral view showing setae I-VII, spinous processes omitted on left ramus; H, cuticular ornamentation of the female, lateral view showing subulate hyaline frills (shf) and spinules (spn), in genital double-somite (GS), urosomites 1-3 (US1-3) and caudal rami (CR). Scale bars: A-F= 10 µm; G, H= 20 µm.

with subdistal row of spinules and 2 stout setae, segment with apical row of strong spinules and with 5 apical elements including 3 long spinulate setae, 1 short spine and 1 naked seta. EXP 3-segmented; EXP1 unadorned, unarmed, EXP2 short, with 1 seta; EXP3 as long as preceding 2 segments combined, with inner row of spinules and with 2 subequally long apiculate setae (Fig. 8B).

Mandible

Gnathobase well developed, with 4 small teeth and 1 long tooth on gnathal blade, plus slender dorsal seta. Basis with row of spinules and with 3 subequal setae. ENP represented by oblong segment bearing outer row of spinules plus 3 apical and 4 inner setae. EXP 1-segmented, with 2 spinulose setae (Fig. 8C).

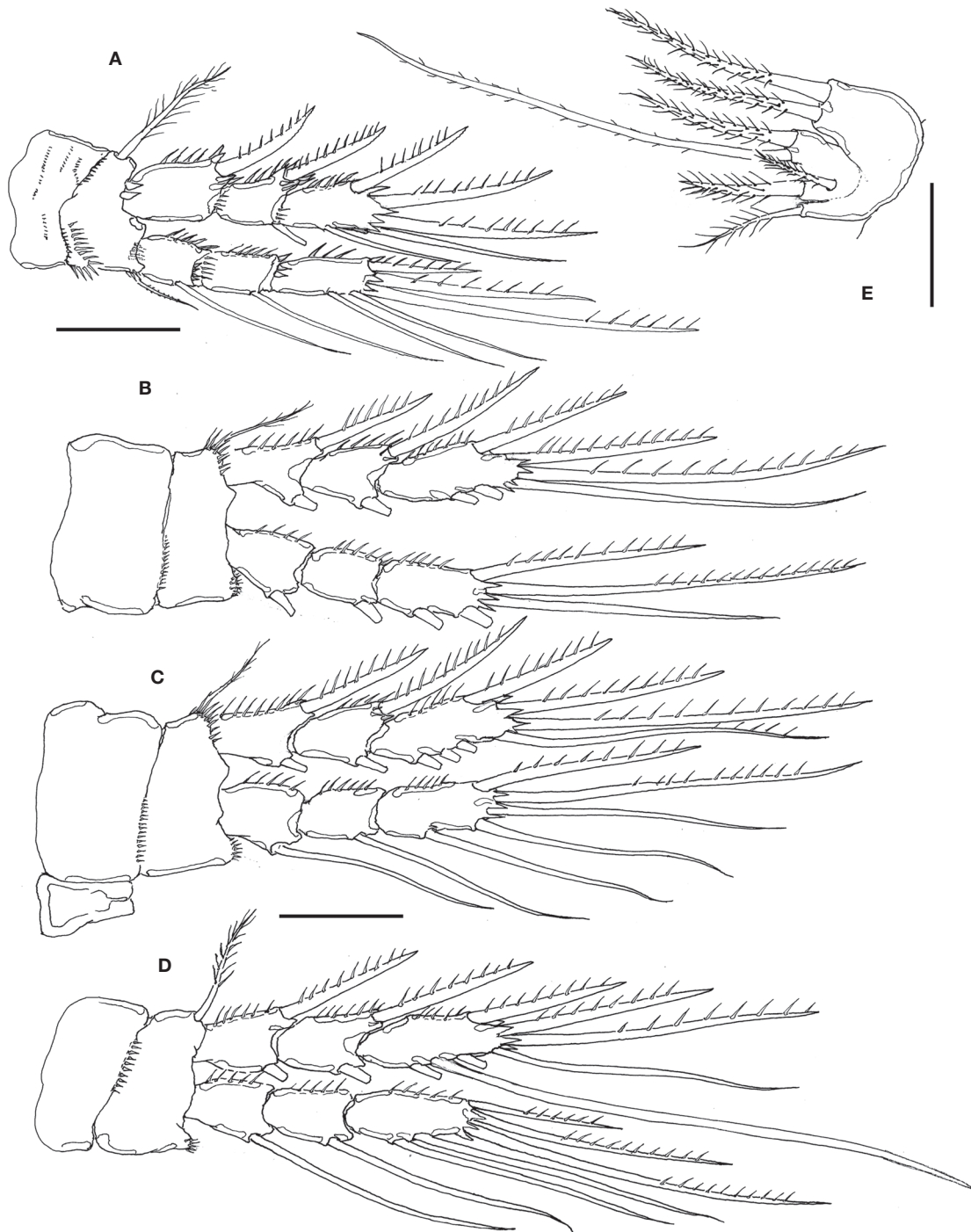


Figure 9. *Pseudobradya gascae* sp. nov., adult female from Colombia: A, leg 1; B, leg 2; C, leg 3; D, leg 4; E, leg 5. Scales bars: A-E= 20 μ m.

Maxillule

Praecoaxal arthrite robust, short, with 3 distal spiniform elements. Coxa short, as long as arthrite, unarmed. Basis bearing 5 setae. EXP represented by small segment with 2 stout lightly spinulated setae. ENP 1-segmented, with 6 setae (Fig. 8D).

Maxilla

Geniculate, robust; syncoxa with 3 endites; proximal and middle endites with 2 setae each; distal endite largest, with 3 setae. Allobasis with 3 setae. ENP 3-segmented, proximal segment with 2, medial segment with 2, distal segment with 3 elements (Figs. 7D, 8E).

Maxilliped

Syncoxa cylindrical, with long spinulose seta. Basis as long as syncoxa, robust, with slender setules along outer margin, row of long spinules along opposite margin, and row of minute spinules on medial surface of segment. ENP represented by single short segment, about half the length of basis, with 4 spinulose setae (Figs. 7C, 8F).

P1-P4

ENP and EXP 3-segmented; coxa of P1 with transverse rows of spinules on anterior surface and posterior margin, basis with semicircular row of spinules on inner proximal half, stronger spines at insertion of exopod (Figs. 7B, C). Coxae of P2-P4 with weaker ornamentation, row of small spinules along half of distal margin. Basis of P2-P4 with distal rows of spinules near insertion of EXP and ENP (Figs. 9A-D). Distal segments of EXP of P1-4 with distal spinous processes. Setal formula is presented in Table 2.

P5

ENP lobe almost reaching distal end of EXP, with 2 strong pinnate setae (inner seta shorter than outer seta). EXP with 4 setal elements, 3 terminal setae plus short accessory seta. Inner and outer exopodal setae pinnate, medial terminal one sparsely spinulated, noticeably long, 2.5 times as long as adjacent inner exopodal seta (Fig. 9E).

P6

Represented by a small plate with a single seta.

Male

Unknown.

Etymology

The species is named after Dr. Rebeca Gasca, researcher at El Colegio de la Frontera Sur-Chetumal, Mexico, for her contributions to the study of marine zooplankton of Mexico.

Remarks

These specimens were identified as belonging to the genus *Pseudobradya* by their possession of a combination of diagnostic characters including: 1) short antennule; 2) antennary exo-

pod with 2-3 segments; 3) mandible basis with 2 setae, exopod with less than 5 setae; 4) geniculate, robust maxilla; 5) short maxilliped, with robust basipod; 6) legs 1-4 with 2 outer spines; 7) P5 exopod with 3 setae (Huys et al., 1996; Kihara & Huys, 2009).

We followed Wells' (2007) key as a guide to identify a group of morphologically similar species among which we can compare our specimens from Colombia. According to our observations, the setal formula of the third exopodal segment of legs 1-4 (5:6:7:7) of our specimens is shared only with *P. barroisi* (Richard, 1893) (see Wells, 2007). We compared additional characters with species having a similar formula (6:7:7:7), such as the presence of one seta on the second endopodal segment of P1-P4, a robust maxilliped with one syncoxal seta, and an unarmed first antennary exopodal segment. Considering these characters the new species also resembles *P. robusta* Sars, 1910. The new species differs from *P. robusta* in having 5 instead of 6 antennary segments (Sars, 1903), in the absence of a seta on the second exopodal segment of the antenna, and the presence of 2 exopodal setae on the mandibular palp (3 in *P. robusta* [Sars, 1903, pl. 5]). Also, these species differ in the length of the syncoxal seta of the maxilliped; it is extremely long in *P. robusta*, reaching well beyond the distal margin of the appendage (Sars, 1903, pl. 5) vs. a shorter element in the new species, barely reaching the distal margin of the maxilliped. Also, *P. robusta* has only 3 distal elements on the maxilliped vs. 4 in the new species, although the fourth seta may be inconspicuous (Huys et al., 1996). The accessory seta on the P5 is long, naked in *P. robusta* (Sars, 1903, pl. 5) vs. a short, robust pinnate seta in the new species (Fig. 9E). In the new species the accessory seta arises from the exopodal surface whereas in *P. robusta* it is inserted more proximally, at the suture with the baseoendopod (Sars, 1903, pl. 5). In *P. robusta* the inner endopodal seta is clearly longer than the outer one (1.5 times) vs. a figure of 1.1 in *P. gascae*.

Pseudobradya gascae sp. nov. resembles also *P. barroisi* as redescribed by Por (1968), in the presence of 5 setal elements on P1 EXP3 (Por, 1968, Fig. 10). On the other hand, *P. barroisi* diverges in several characters including the presence, in *P. barroisi*, of a dark pigmentary spot on each of the first 2 antennary segments (Por, 1968, Fig. 1). Such spots are absent in *P. gascae* sp. nov. They also differ in other important characters including the number of segments of the female antennule (7 in *P. barroisi*, but 5 in *P. gascae*), the antennary exopod (2-segmented in *P. barroisi*, but 3-segmented in *P. gascae* sp. nov. (see footnote in Wells, 2007), the A2 EXP2 of the antenna [with strong spinules in *P. gascae* sp. nov. (Fig. 8B), but without ornamentation in *P. barroisi* (Por, 1968, Fig. 6)]. Also, the maxilliped basis is nearly as long as the syncoxa (Fig. 8F) in the new species, but about 1.5 times as long as the syncoxa in *P. barroisi* (Por, 1968, Fig. 9), the ornamentation of the distal margin of the P1 basis (it has a row of 2-3 strong spinules in the new species (Figs. 7B, 8A), but it has a short row of minute spinules in *P. barroisi* (Por, 1968, Fig. 10)), in the caudal seta III/caudal ramus length ratio (about 1.2 in *P. barroisi* (Por, 1968, Fig. 3), but 2.2. in *P. gascae* sp. nov.), in the relative length of the P1EXP (reaching the distal margin of the P1ENP2 in *P. bar-*

Table 2
Setal formula of the female of *Pseudobradya gascae* sp. nov.

	exopod	endopod
P1	I-0;I-1; II,II,1	0-1; 0-1; I,II,2
P2	I-1;I-1; II,II,2	0-1; 0-1; I,II,2
P3	I-1;I-1; II,II,3	0-1; 0-1; I,II,2
P4	I-1;I-1; II,II,3	0-1; 0-1; I,II,2

roisi, but of the same length in *P. gascae* sp. nov.), in the length of the P5EXP middle seta [2.5 times as long as adjacent inner seta in *P. gascae*, but noticeably shorter in *P. barroisi* (Por, 1968, Fig. 12)]. This character appears to be distinctive of this species, other congeners with a relatively long middle seta include *P. digitata* Sars, 1920 (2.2), *P. pygmaea* Sars, 1920 (2.0), and *P. attenuata* Sars, 1920 (1.8).

Distribution and ecology

Both new species, *Halectinosoma arangureni* and *P. gascae* are currently known only from the protected coastal system Navío Quebrado Lagoon, on the Caribbean coast of Colombia. This large (surface area of 10.7 km²) lagoon system is a shallow water body (depth 0.3-1.1 m), whose temperature ranges seasonally from 28 to 31 °C; pH values during the sampling period ranged from 7.8 to 8.3; salinity was 28 PSU at the time of sampling. This is the type of habitat in which these ectinosomatid genera can be recorded (Boxshall & Defaye, 2008). These species were recorded in both the limnetic region and the vegetation zones, being more frequent in the former. *Pseudobradya gascae* sp. nov. was particularly abundant in the surveyed area. There are only a few records of species of *Halectinosoma* and *Pseudobradya* in the Caribbean (Coull, 1970, 1971; Suárez-Morales et al., 2006). These include *Halectinosoma dimorphum* Coull, 1970 from Barbados, U.S. Virgin Islands, *H. gothiceps* (Giesbrecht, 1881) from the U.S. Virgin Island, *Pseudobradya pulchra* Sars, 1920 (Barbados, U.S. Virgin Islands) and *Pseudobradya* spec. Coull, 1971 (U.S. Virgin Islands). Both genera are recorded for the first time in Colombian waters. A total of 15 species of Harpacticoida have been recorded previously in this coastal system (Fuentes-Reinés & Suárez-Morales, 2014a, b), a figure which has increased to 17 with the addition of these 2 new species.

Acknowledgements

We are very grateful to Dr. Rony Huys (Natural History Museum, London) and Samuel Gómez (Universidad Nacional Autónoma de México, Instituto de Ciencias del Mar y Limnología, Mexico) for kindly supplying valuable taxonomic literature. Guadalupe Nieto, Laboratorio Institucional de Microscopía Electrónica at ECOSUR-Tapachula, Mexico, kindly and efficiently performed the processing of specimens for SEM analysis. Constructive comments and suggestions from two anonymous reviewers are greatly appreciated.

References

- Boxshall, G. A., & Defaye, D. (2008). Global diversity of copepods (Crustacea: Copepoda) in freshwater. *Hydrobiologia*, 595, 195–207.
- Chislenko, L. L. (1967). Copepoda Harpacticoida of the Karelian coast of the White Sea. *Proc. White Sea Biological Station of the Zoological Institute*, 7, 48–196.
- Clément, M., & Moore, C. G. (2000). A revision of the genus *Halectinosoma* (Copepoda: Harpacticoida: Ectinosomatidae): the *H. herdmani* (Scott & Scott) group of species. *Zoological Journal of the Linnean Society*, 128, 237–267.
- Clément, M., & Moore, C. G. (2007). Towards a revision of the genus *Halectinosoma* (Copepoda, Harpacticoida, Ectinosomatidae): new species from the North Atlantic and Arctic regions. *Zoological Journal of the Linnean Society*, 149, 453–475.
- Coull, B. C. (1970). Harpacticoid copepods from Barbados and Jamaica, W.I., with descriptions of two new species. *Caribbean Journal of Science*, 10, 129–135.
- Coull, B. C. (1971). Meiobenthic Harpacticoida (Crustacea, Copepoda) from St. Thomas, U.S. Virgin Islands. *Transactions of the American Microscopical Society*, 90, 207–218.
- Defaye, D., & Dussart, B. H. (2011). World directory of the Crustacea Copepoda of inland waters. III-Harpacticoida. IV-Gelyelloida. Germany: Backhuys Publ., Margraf Pub. Weikersheim.
- Fuentes-Reinés, J., & Suárez-Morales, E. (2014a). A new subspecies of *Nitokra affinis* Gurney, 1927 (Copepoda, Harpacticoida) from the Caribbean coast of Colombia. *ZooKeys*, 378, 1–15.
- Fuentes-Reinés, J., & Suárez-Morales, E. (2014b). Annotated checklist and new records of Harpacticoida (Copepoda) from a coastal system of northern Colombia, South America. *Crustaceana*, 87, 212–255.
- Huys, R. (2009). Unresolved cases of type fixation, synonymy and homonymy in harpacticoid copepod nomenclature (Crustacea: Copepoda). *Zootaxa*, 2183, 1–99.
- Huys, R., Gee, J. M., Moore, C. G., & Hamond, R. (1996). Marine and brackish water Harpacticoid copepods. Part 1: keys and notes for identification of the species. In R. S. K. Barnes & J. H. Crothers (Eds.), *Synopses of the British fauna* (pp. 1–352). Shrewsbury, U.K.: Field Studies Council (New Series, 51).
- Jakobi, H. (1954). Harpacticoida (Cop. Crust.) da microfauna do substrato areno-lodoso do “Mar de Dentro” (Ilha do Mel - Baía de Paranaguá - Brasil). *Dusenya*, 5, 209–232.
- Kihara, T. C., & Huys, R. (2009). A new genus of Ectinosomatidae (Copepoda, Harpacticoida) from sublittoral sediments in Ubatuba, Sao Paulo State (Brazil), an updated key to genera and notes on *Noodtiella* Wells, 1965. *ZooKeys*, 17, 57–88.
- Lang, K. (1944). Monographie der Harpacticiden (Vorläufige Mitteilung). Uppsala: Almqvist & Wiksells Bøkrtryckeri Ab.
- Lang, K. (1965). Copepoda Harpacticoida from the Californian Pacific coast. *Kungliga Svenska Vetenskapsakademiens Handlingar, Fjärde Serien*, 10, 5–560.
- Moore, C. G. (1978). An emendation of the family name Ectinosomidae Sars to Ectinosomatidae (Copepoda, Harpacticoida). *Crustaceana*, 34, 111.
- Poppe, S. A. (1885). Die freilebenden Copepoden des Jadebusens I. *Abhandlungen des Naturwissenschaftlichen Vereins zu Bremen*, 9, 167–206.
- Por, F. D. (1968). The benthic Copepoda of Lake Tiberias and of some inflowing springs. *Israel Journal of Zoology*, 17, 31–50.
- Reid J. W. (1998). Maxillopoda - Copepoda. Harpacticoida. In P. S. Young (Ed.), *Catalogue of Crustacea of Brazil* (pp. 75–127), Série Livros n. 6. Rio de Janeiro: Museu Nacional.
- Rouch, R. (1962). Harpacticoides (crustacés copépodes) d'Amérique du Sud. *Biologie de l'Amérique Australe*, 1, 237–280.
- Sars, G. O. (1903). *An account of the Crustacea of Norway. Copepoda Harpacticoida*. (Vol. V). Parts I and II. Misophriidae, Longipedidae, Cerviniidae, Ectinosomidae (part). Bergen: Bergen Museum.
- Sars, G. O. (1904). *An account of the Crustacea of Norway. Copepoda Harpacticoida*. (Vol. V). Parts III-VI. Bergen: Bergen Museum.
- Sars, G.O. (1920). *An account of the Crustacea of Norway. VII. Copepoda Supplement*. Parts IV-VIII. Bergen: Bergen Museum.
- Suárez-Morales, E., De Troch, M., & Fiers, F. (2006). A checklist of the marine Harpacticoida (Copepoda) of the Caribbean Sea. *Zootaxa*, 1285, 1–19.
- Vervoort, W. (1962). Report on some Copepoda collected during the Melanesia Expedition of the Osaka Museum of Natural History. *Publications of the Seto Marine Biological Laboratory*, 10, 393–470.
- Wells, J. B. J. (1967). The littoral Copepoda (Crustacea) of Inhaca Island, Mozambique. *Transactions of the Royal Society of Edinburgh*, 67, 189–358.
- Wells, J. B. J. (2007). An annotated checklist and keys to the species of Copepoda Harpacticoida (Crustacea). *Zootaxa*, 1568, 1–872.