

# An Introduction to OS Maps

# Tackling maps

- Begin with local area
- Walk the ground
- Explore aerial photography in SM
- Fade photo to map using fade tool
- Contrast photo and map
- Use 'Swipe & Spotlight'
- Define what a map is

# Map Definition

A map is a scaled down drawing of  
the landscape

# Key terms

- Representation

- Scaled down:

Class task: *'Draw a map of the classroom'*

- Landscape:

Physical landscape

Cultural Landscape

# Aim of Local study

- Develop the concept of a map
- Skills to practice:

Measuring

Direction

Legend

Location – simple grid from SM

# Local Studies examples

- Check the scale of the map
- Weathering examples
- Land use
- Vegetation types

# Discovery Series Maps

Topographical Maps

# How do Discovery Maps Represent the Landscape





Balline

Holy Well

Castle

Ballinvreena

28

Mitchelstowndown

Graveyard

Crawford's Cross Rds

Moated Site

Lower Cush Cross Rds

Ballinvreena Cross Rds

Glenlary

Knocklary

Cush

27

Graveyard

Cush Cross Rds

Holy Well

Standing Stone

Holy Well

Graveyard

ows

26

Glenbrohane Sch

Upper Cush Cross Rds

Standing Stones

Carrignacaubeen

Ballingarry

Kilmurry Br

Turbuli

Slieve Reagh

Cairn 465

Church

Moorestown

25

The Pinnacle

Carrignacaubeen River

362

# Representation on maps

- Colour  
water, land, height,
- Lines  
roads, railways, coast, contours, powerelines  
boundaries
- Numbers  
heights, roads
- Writing  
placenames, antiquities, services
- Symbols  
youth hostel, camping site etc.

# Legend

New legend used in state  
examexaminations from 2016

Circular 0050/2013

# Legend Test

**A**



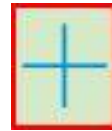
**B**



**C**



**D**



**E**



Contrast old and new legends

Legend

Eochair

**Coilíní Turasóiríochta**  
Tourist Information

- Láithreán caráin (dóitear)  
Caravan site (pitch)
- Tuarann Náisiúnaí  
Nature Reserve
- Gairdíníocht, maicéire gairf  
Golf Course or Links
- Dó de chuid An Gige  
Youth Hostel (An Gige)
- Ionad páirceála  
Parking
- Láithreán píonóir  
Plane site
- Teilefón Páblí  
Public Telephone
- Ionad solais turasóiríochta  
(ar oscailt) nó Ionad na hEireann  
Tourist Information Centre  
(regular opening)
- Ionad solais turasóiríochta  
(ar oscailt) le hionann  
faoi mhéadú coimeád  
(restricted opening)
- Dó seoin Neamhspleách  
Independent Holiday Hostel
- Ionad seartha  
Keypad
- An Tástair  
National Test

**Dóitíre Róadaí**

- Stáisiúnhealach  
Junction Number
- Róadaí Réigiúnach  
Regional Road
- Róadaí chéim  
NIA Road  
Third Class Road
- Róadaí príomha náisiúnaí  
National Primary Road
- Róadaí ábhaite náisiúnaí  
National Secondary Road
- Carriagheach dubhaile  
Dual Carriageway
- Róadaí eile  
Other Roads
- Seaside  
Track
- Róadaí príomha ábhaiteach  
náisiúnaí beartaíoch  
Proposed Nat. Primary /  
Secondary Road

**Gnáthé ginearálta**  
General features

- Fálghráb le hata a chéim  
Mud up Area
- Garda Síochána  
Police
- Cúla  
Cave
- Tréamh clárach  
Electricity Intersection
- Aerfort  
Airport
- Aeráid  
Aerodrom
- Oifig pósta  
Post office
- Stáisiún cumhachta (aer)  
Power Station (Aer)
- Stáisiún cumhachta  
(aer) ábhaiteach  
Power Station (Aer)
- Líne tréamha leictreacha  
Electricity Transmission Line
- Eaglais nó cill  
Church or Chapel
- Ardéaglais  
Cathedral
- Cúlaí inléimneacha  
Inauguration Pillar
- Stáisiúnhealach le comharthaí  
gairdeacha  
Waymarked Walks: Unmarked
- Féráil (Veihicil)  
Ferry (Vehicle)
- Féráil (Páisir)  
Ferry (Passenger)

**Teorainneacha**  
Boundaries

- Teorainn idirnáisiúnaí  
International Boundary
- Teorainn chontae  
County Boundary
- Páir Náisiúnaí  
National Park
- Páir Fionnua  
Forest Park
- Scíth de chuid an Aire Chosanta  
Sept. of Defence Property
- Forasáil mhéarleach  
Confused Plantation
- Coill náisiúnaí  
Natural Woodland
- Forasáil mhéaracha  
Woodland

**Sáidheamhartha**  
Antiquities

- Sáidheamhartha  
Náisiúnaí  
National Antiquities
- Dóil, muil, ábhaite náisiúnaí  
Dolmen, e.g. Ringfort
- Láthair Chosanta (le ábhaite)  
Scheduled Monument

**Raille**  
Railway

- Céim líne comhartha  
10m  
10m Contour Interval
- Céim líne comhartha  
50m  
50m Contour Interval
- Spáir ábhaite  
Spot Height

**Gnáthé uisce**  
Water features

- Locha  
Lake
- Canál, canál (dóitear)  
Canal, Canal (pitch)
- Abhainn nó scábla  
River or Stream
- Teach solais le cábla / sa léid  
Lightship in use / disuse
- Stáisiún Scáil  
Scáil activities  
Line ábhaite náisiúnaí  
High Water Mark
- Líne íg náisiúnaí  
Low Water Mark
- Táir  
Mark

**Iarnróid**  
Railways

- Iarnróid  
Railways
- Iarnróid ábhaiteach  
Industrial Line
- Droichead comhartha  
Level Crossing
- Stáisiún Iarnróid  
Railway Station
- Tuillín  
Tunnel

**IRISH NATIONAL GRID**



Donnchlaonáil náisiúnaí  
Irish National Grid  
Donnchlaonáil náisiúnaí  
Irish National Grid  
Donnchlaonáil náisiúnaí  
Irish National Grid

**SAMPLE GRID REFERENCE ONLY**


NOTE: THESE GRID REFERENCES ARE SAMPLE REFERENCES ONLY AND THE PLACES NAMED ARE NOT FOUND ON THIS MAP EXTRACT.

- 0000
  - DISCOVERY SERIES JANET 2  
SANDHILLAN C 00 275
  - DISCOVERY SERIES JANET 2  
JACOBS BRIDGE C 04 520
- Comharthaí agus foilsíodh le Ordnance Survey Ireland,  
Phoenix Park, Dubhán 8, Éireann.  
Mapa náisiúnaí agus foilsíodh le Suirbhéireacht Orlánda Éireann, Páir na  
Fionnuaí, Bala Ána Clár 8, Éire.



# New Style Discovery Series Legend

Ordnance Survey Ireland has slightly changed the style of their Discovery Series Maps. The small number of style changes to the legend is listed below.

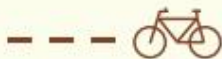
1. The background colour of the legend is now light cream, not green as before.
2. The legend's symbols are not now organised under headings.
3. Five new symbols have been included.
4. Seven symbols have been redesigned.
5. The Public Telephone symbol  is no longer in use.
6. The information about the Irish Transverse Mercator (ITM) Projection is for information only and **not** for examination.

## 5 New Symbols

### Mountain Rescue Base



### Cycle Route approved by the National Trails Office



### Wind Farm

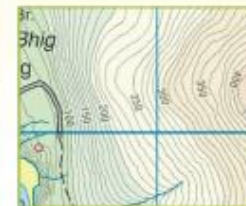
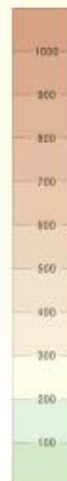


### Summit Information classifies summits for hillwalkers

- Above 600m
  - 599m - 400m
  - Below 400m
- NOTE Over 600m summits must have a prominence of 15m  
Between 400m and 599m a prominence of 30m and from 150 to 399m a prominence of 150m



### Elevation



Exemplars





## 7 Redesigned Symbols

	Waymarked Walks	Golf Course or Links	National Park	Coniferous Plantation	Deciduous Woodland previously called Natural Woodland	Mixed Woodland	Department of Defence Property
Old							
Redesigned							
Exemplars							









### 3. PRACTICAL SKILLS FOR GEOGRAPHY AT JUNIOR CYCLE

THE SKILL	ORDINARY LEVEL	HIGHER LEVEL
<p><b>MAP INTERPRETATION</b></p> <p>(Being able to work with small scale and Ordnance Survey maps)</p>	<ul style="list-style-type: none"> <li>- Extract information from maps</li> <li>- Recognise symbols</li> <li>- Read heights at (and between) contours</li> <li>- Measure straight and winding distances</li> <li>- Use grid references</li> <li>- Identify simple geographical relationships</li> <li>- Relate maps to photographs and other sources of information</li> <li>- Orientation in the field</li> </ul>	<p>As at Ordinary level <u>plus</u></p> <ul style="list-style-type: none"> <li>- Calculate map area</li> <li>- Identify concave and convex slopes</li> <li>- Form generalisations from map data</li> <li>- Recognise the comparative limitations of maps for different purposes</li> </ul>
<p><b>FIGURE INTERPRETATION</b></p> <p>(Being able to comprehend and analyse information provided in the form of figures)</p>	<ul style="list-style-type: none"> <li>- Understand information provided in the form of figures such as line graphs, bar graphs, pie-charts, simple diagrams and pictorial models</li> </ul>	<p>As at Ordinary level <u>plus</u></p> <ul style="list-style-type: none"> <li>- analyse information provided in this form</li> <li>- Evaluate the effectiveness of a figure as a mode of presentation</li> </ul>
<p><b>PHOTOGRAPH ANALYSIS</b></p> <p>(Being able to interpret photographs including aerial (vertical &amp; oblique) and satellite photographs)</p>	<ul style="list-style-type: none"> <li>- Identify and interpret major features and simple geographical relationships and patterns depicted in these photographs</li> <li>- Describe such features, relationships and patterns in simple and accurate language</li> <li>- Compare what is observed in a photograph with what is observed in a map of the same area</li> </ul>	<p>As at Ordinary level <u>plus</u></p> <ul style="list-style-type: none"> <li>- Recognise the limitations concerning the use of certain kinds of photographs</li> </ul>
<p><b>NUMERICAL SKILLS AND CALCULATION</b></p> <p>(Being able to understand information in numerical form and carry out simple calculations based on such information)</p>	<ul style="list-style-type: none"> <li>- Read statistics and other numerical data</li> <li>- Recognise simple patterns and trends as indicated by these data</li> <li>- Compare and relate two or more sets of data</li> <li>- Carry out simple calculations based on given data</li> </ul>	<p>As at Ordinary Level <u>plus</u></p> <ul style="list-style-type: none"> <li>- Carry out more complex calculations on given data</li> <li>- Make extrapolations, forecasts and projections based on recognised patterns and trends</li> </ul>