



FlexScan LCD Monitors





If your first priority is quality, your first choice is EIZO.

At EIZO, our mission is clear: satisfying the most demanding users.

If your monitor is an important part of your working day, you are one of those users. Whether you're in brokerage, graphic design, finance, IT or a business field, your monitor greatly affects how effectively and how comfortably you work. We have specialized in creating the world's best monitors for over 20 years, with a total commitment to providing unrivaled quality and complete satisfaction.

Why do we have such confidence in our products? While others outsource, we continue to do our own R&D, manufacturing and quality control. Our longstanding commitment to this "do it ourselves" approach guarantees the highest quality, craftsmanship and reliability, while enabling us to develop and market innovative products and features at a faster pace.

This centralized approach results in a number of other advantages as well. EIZO monitors give you greater control over how things look



onscreen. Whether you're fine-tuning the color or setting the best viewing mode for your application, EIZO's leading-edge circuitry provides unmatched capabilities. Our ASIC (application specific integrated circuit) for example, incorporates ten years of improvements and enhancements, and now offers benefits like 10-bit gamma control and picture-in-picture.

EIZO monitors set the standard for ergonomics and flexibility, with features like ultra-slim bezels, easy positioning and a wide range of

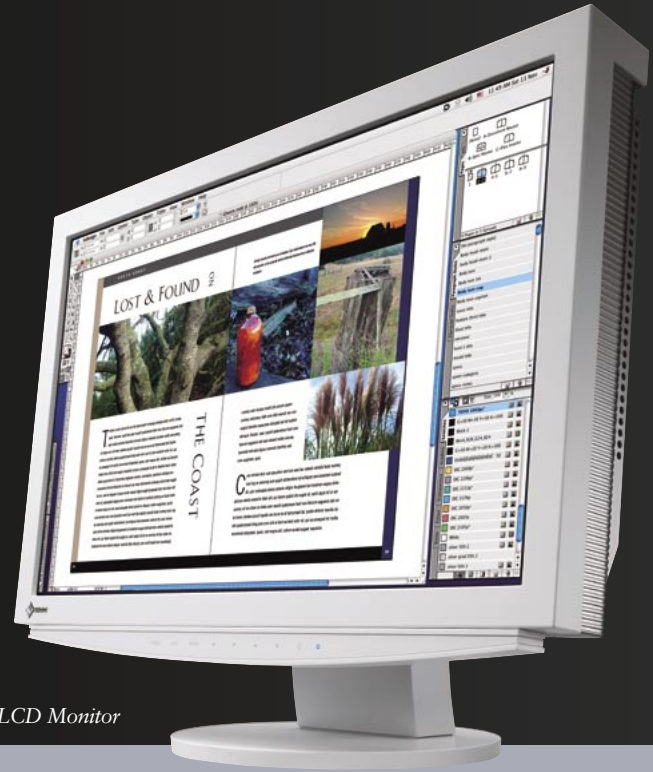
mounting solutions.

All of our monitors comply with leading international safety and environmental standards, as well as with our own strict standard: EIZO Eco Products.

Finally, we offer the first and only five-year warranty in the industry, backed by a deep commitment to service and support.

If you appreciate quality, and insist on it above all else, EIZO monitors are your first choice.

The FlexScan S2410W and S2110W have 24.1" and 21.1" screens respectively and a 16:10 aspect ratio, providing the widescreen view you want for movies and games, as well as for 3-D CAD and graphic design applications. Featuring fast response time, high contrast ratio and outstanding brightness, they do a superb job of reproducing both still and moving images. Both include the ArcSwing 2 stand for easy, flexible positioning.



S2110W 21.1" Color LCD Monitor

FEATURES

Widescreen Format

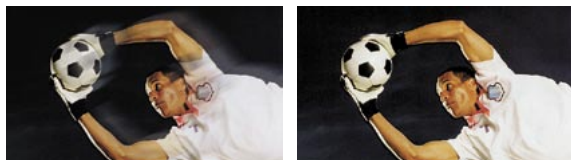
Both monitors employ a 16:10 aspect ratio as opposed to the 5:4 and 4:3 ratios of conventional screens. The increased horizontal space this affords means you can keep tool palettes open without covering the window you're working on. You can also view two windows or two applications with no overlap. And because the 16:10 aspect ratio is almost the same as the 16:9 used by DVDs, you can enjoy movies with minimal black borders at the top and bottom of the screen.



Comparative active display area between S2110W and 19" and 17" LCD monitors.

Fast Response Time

To ensure that movies and other moving images look clean and sharp, both monitors feature a fast response time. An overdrive circuit smooths image flow by adjusting the voltage input for each frame based on image data from the three previous frames. Com-



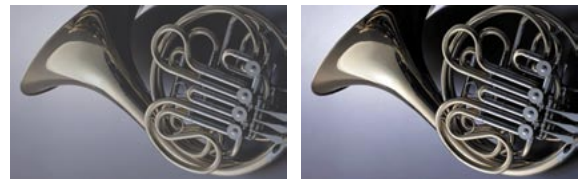
Without overdrive circuit

With overdrive circuit

monly used in LCD TVs, overdrive improves midtone response time — the time required to transmit gray levels — to 8 ms for both monitors.

1000:1 Contrast Ratio

This outstanding contrast performance makes images on dark backgrounds appear more vivid, brings out the subtle differences in similar shades of color, and ensures that colors retain their richness even in brightly lit rooms.



500:1

1000:1

450 cd/m² Brightness

With high brightness of 450 cd/m², the same as high quality LCD TVs, these monitors present a clear view even in bright environments.

Dual DVI-I Inputs

DVI-I ports allow direct digital connection for maximum image clarity and also support analog input. Both can be used for simultaneous connection to two PCs, with easy switching between them via a button on the front panel.

14-Bit Processing for Accurate Color

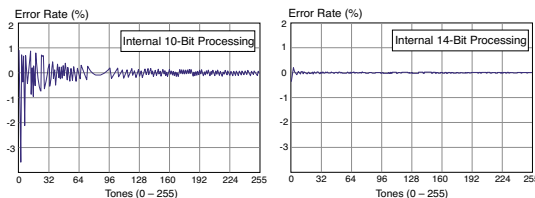
These widescreen monitors incorporate a powerful new EIZO-developed ASIC (Application Specific



S2410W **24.1"** Color LCD Monitor

Integrated Circuit) with 14-bit color processing capability. This allows a larger number of grayscale increments, for smooth grayscale rendering. The result is a much greater degree of color detail, especially in dark areas and shadows.

10-bit v. 14-bit processing



With 10-bit processing, the error rate is high in low tonal areas during calculation. With 14-bit processing, accuracy is significantly improved resulting in fewer conversion errors.

Fine Contrast Mode Selection

Choose from among five Fine Contrast image modes — Text, Picture, Movie, Custom and sRGB — to best suit the application you're using.

Detailed Color Control

Gamma, saturation, hue, gain, and color temperature from 4,000 K to 10,000 K can all be adjusted in the OSD menu for accurate, natural display of color. For fine-tuning of even a single color, the hue and saturation settings for red, green, blue, cyan, magenta, and yellow can be adjusted independently.



ArcSwing 2 Stand

This stand offers a large arc-shaped range of movement. You

can position it at eye level or at a low angle akin to reading a book, for best viewing no matter how and where you are using the monitor. In addition, It features a sturdy base and a cable holder for cable management.

Touch Sensitive Switches



You have quick access to a variety of functions via highly sensitive electrostatic "touch" switches on the front panel. Presenting a sophisticated appearance, they are also easier to engage than the small buttons of most LCD monitors.

USB 2.0 Hub

Both monitors provide a high speed (480 Mb/s) USB 2.0 hub with two downstream ports which are conveniently located on the side of the monitor for quick connection of peripherals.



Choice of Colors



Both models are available in black and also with a white/silver cabinet that complements the Power Mac G5 and Mac mini.

Customer Assurance



These three monitors provide a wide range of EIZO's most sophisticated image and color control functions, making them ideal for CAD/CAM and graphics/image processing applications. Also welcome in call centers and offices, their thin bezel design saves valuable workspace. In terms of both performance and ergonomics, these models are well ahead of the competition.



L997 21.3" Color LCD Monitor

FEATURES

Fine Contrast Mode Selection

Choose from among six different Fine Contrast modes — Text, Picture, Movie, External, Custom and sRGB — for the one that best suits the kind of application you're using. (External mode not included with L887.)

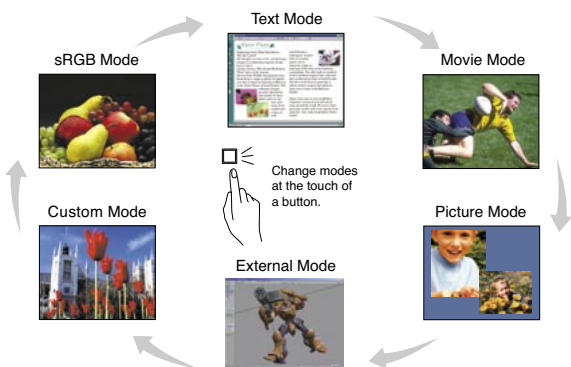


Image Mode Assignment

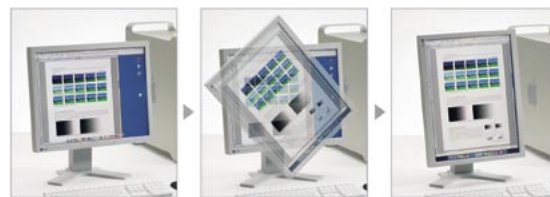
Part of the ScreenManager Pro for LCD utility software, this function lets you assign a Fine Contrast mode to a specific application. Whenever you use the application, the screen automatically changes to the assigned mode. It also provides a Window Movie mode, which darkens the surrounding background so the video window appears clearer and brighter.



ActiveRotation II Portrait Mode Support

The FlexScan L997 introduces ActiveRotation II, an EIZO-exclusive function that provides built-in support

for portrait mode. The monitor includes a gravity sensor, so it "knows" when it is being rotated and changes between portrait and landscape modes accordingly. Because it is hardware-based, ActiveRotation II does not absorb CPU power or compromise graphics performance. It supports Windows 2000/XP and Mac OS 9/X platforms.



Graphics board support for ActiveRotation II varies by manufacturer and model. With some graphics boards, it may be necessary to change the resolution on the PC side or restart the computer after rotating the screen. For details on graphics board support, please see www.eizo.com/support/compatibility/

ActiveShot Picture-in-Picture Display

ActiveShot improves work efficiency by letting you use two computers simultaneously from a single monitor. Two picture-in-picture modes are available: Standard, which shows the entire screen from the second source, and Clip, which allows selection of any screen segment for viewing. You can assign main and sub-computers, select the size and position of the sub-window, and make the sub-window appear and disappear at the touch of a button. (FlexScan L997 only.)



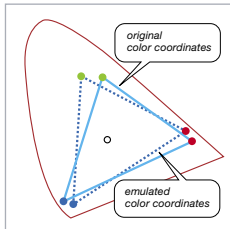
L887 20.1" Color LCD Monitor



L797 19" Color LCD Monitor

Color Space Emulation

Included in EIZO's ScreenManager Pro for LCD utility software, Color Space Emulation enables you to match your monitor to the color characteristics of other CRT or LCD monitors, or to other color spaces. (FlexScan L997 and L797 only. Software is compliant with Windows 98SE/ME/2000/XP only.)



Independent 6-Color Control

Easily accessible via the front panel buttons, you can use this function to independently adjust hue and saturation for each primary (red, green, blue) and secondary (cyan, magenta, yellow) color for precise adjustment of even a single color in an image.



Versatile Positioning

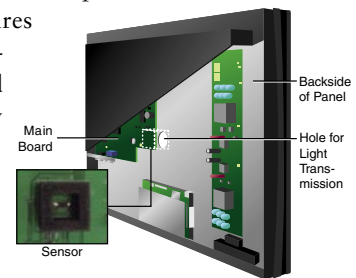
All EIZO monitors are designed so they can be positioned or mounted to suit any kind of work space. Supplied stands let you easily adjust the screen to the most comfortable viewing position: over a wide range up or down, 40° tilt, 70° swivel and



90° pivot for portrait mode. Monitors comply with VESA mounting standards, so they can be removed from the stand and mounted on a movable arm or wall bracket. Since the power supply is built in, there is no need for a separate power brick or cord, making installation clean and simple.

Brightness Stabilization

Constant, non-fluctuating brightness is necessary for the proper display of color. An EIZO-patented drift correction function quickly stabilizes the brightness level upon startup or wakeup. In addition, a sensor measures the backlight brightness of the LCD and compensates for any brightness fluctuations caused by the ambient temperature or the passage of time.



Detailed Image Control

This function offers independent control of hue, saturation, and gain, and adjustment of color temperature in 500 K increments from 4,000 to 10,000 K (including 9,300 K) for accurate, natural display of color.

Customer Assurance



This 19" monitor uses an overdrive circuit to smooth the flow of moving images, so movies and games are much more enjoyable. Its high resolution, Fine Contrast control and extremely thin bezels for dual-monitor use also make it ideal for 3-D CAD/CAM applications. A 100 mm height-adjustable stand is standard; if greater range of motion is desired, the FlexScan S1910-AS with ArcSwing 2 stand is also available.

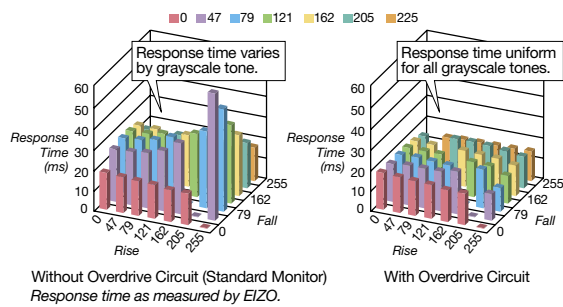


S1910-AS 19" Color LCD Monitor

FEATURES

Overdrive Circuit

The overdrive circuit smooths the flow of moving images by adjusting the voltage input for each frame based on image data from the previous three frames. Commonly used in LCD TVs, the circuit improves midtone response time — the time required to transit between gray levels — to 12 ms, greatly reducing blurring in moving color images.

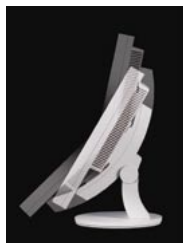


SlimEdge Design

The thin bezels of 15 mm across the top and bottom and just under 13 mm on the sides saves space and provides near-seamless viewing in a multi-panel configuration.

ArcSwing 2 Stand

For additional placement flexibility, an ArcSwing stand variation is available, providing 104 mm height adjustment, 60° tilt and 172° swivel. The screen can even



be lowered to an angle you would use for reading a book.

1000:1 Contrast Ratio

Makes images on a dark background appear more vivid and ensures that colors retain their richness even in a brightly lit room.

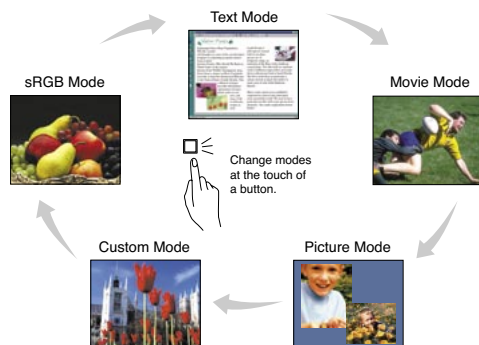


500:1

1000:1

Fine Contrast Mode Selection

Choose from among five Fine Contrast modes — Text, Picture, Movie, Custom and sRGB — to best suit the application you're using.





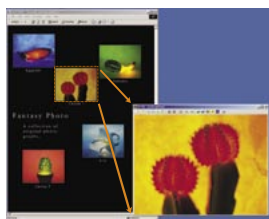
S1910 19" Color LCD Monitor

Image Mode Assignment

This feature lets you assign any Fine Contrast mode to a specific application. When you open the application, the screen automatically changes to that mode.

DesktopViewer

With this bundled software, select an image or capture any part of the screen for display in a bright overlay window — convenient for zooming in on a select area for closer examination. You can also use it to enlarge or reduce the displayed image and freely alter its brightness, contrast, chroma, hue and gamma values.



Digital and Analog Inputs

With both DVI-D and D-Sub mini 15-pin inputs, you can use a computer that has either a digital or an analog graphics board (or both if connected to two computers), and quickly switch between the inputs via a front panel button.



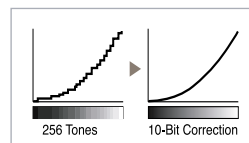
Brightness Stabilization

At startup or upon wakeup, an EIZO-patented drift correction function quickly stabilizes the brightness

level. In addition, a sensor measures the backlight brightness and compensates for brightness fluctuations caused by the ambient temperature and the passage of time.

10-Bit Gamma Correction

Automatically takes 8-bit input signals (256 tones for each primary color) from the graphics board and uses a 10-bit look-up table (1,021 tones) to produce smoother, more accurate gradations of color. Gamma values are also user-adjustable from 1.4 to 3.0 in 0.2 increments.



Detailed Image Control

This function offers independent control of hue, saturation, and gain, and adjustment of color temperature in 500 K increments from 4,000 to 10,000 K (including 9,300 K) for accurate, natural display of color.

Auto Adjustment

Pressing a button on the front panel automatically adjusts four basic monitor parameters: clock pulse, phase, screen position and resolution.

Customer Assurance



The FlexScan L788 is designed to meet the special requirements of financial and trading room environments, while the L768 and L568 are ideally suited for corporate applications. All three offer sophisticated image and color control functions and have thin bezels to facilitate multi-panel use. The FlexScan L768-AS and L568-AS variations come with an ArcSwing 2 stand that adjusts through a large arc-shaped range of movement.



L788 19" Color LCD Monitor

FEATURES

Versatile Positioning

Position the screen wherever you like with 100 mm height adjustment, 40° tilt, 70° swivel, and 90° pivot for portrait mode. Compliance with VESA standards allows for mounting on a movable arm or wall bracket.



SlimEdge Design

The L788's and L768's bezels are 15 mm top and bottom and just under 13 mm on the sides, while the L568's are only 13 mm and 11 mm, respectively. This saves space and provides near-seamless multi-panel configurations.

ArcSwing 2 Stand

For placement flexibility, ArcSwing stand variations (FlexScan L768-AS and L568-AS) are available, providing 104 mm height adjustment, 60° tilt and 172° swivel. The screen can even be lowered to an angle you would use for reading a book.

1000:1 Contrast Ratio

This exceptional contrast ratio makes images on a dark background appear more vivid and ensures

that colors retain their richness even in a brightly lit room.



500:1



1000:1

Fine Contrast Mode Selection

Choose from among five Fine Contrast modes — Text, Picture, Movie, Custom and sRGB — to best suit the application you're using. (FlexScan L768 and L568 only.)

Image Mode Assignment

This feature lets you assign any Fine Contrast mode to a specific application. When you open the application, the screen automatically changes to that mode. (FlexScan L768 and L568 only.)

High Speed USB Hub

A built-in one-upstream, two-downstream 480 Mb/s USB hub provides easy connection of keyboard, camera and other peripherals directly through the monitor. (FlexScan L788 only.)



L768 19" Color LCD Monitor



L568-AS 17" Color LCD Monitor

Digital and Analog Support

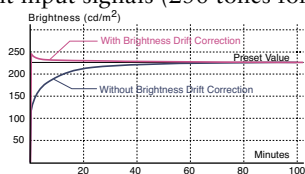
All three models accept digital and analog signals; the L788 with dual DVI-I ports and the L768 and L568 with one DVI-D and one D-sub port.

Brightness Stabilization

At startup or upon wakeup, an EIZO-patented drift correction function quickly stabilizes the brightness level. In addition, a sensor measures the backlight brightness and compensates for brightness fluctuations caused by the ambient temperature and the passage of time.

10-Bit Gamma Correction

Automatically takes 8-bit input signals (256 tones for each primary color) from the graphics board and uses a 10-bit look-up table (1,021 tones) to produce smoother, more accurate gradations of color. Gamma values are also user-adjustable from 1.4 to 3.0 in 0.2 increments.



Detailed Image Control

This function offers independent control of hue, saturation, and gain, and adjustment of color temperature in 500 K increments from 4,000 K (including 9,300 K) for accurate, natural display of color.

Auto Adjustment

Pressing a button on the front panel automatically adjusts four basic monitor parameters: clock pulse, phase, screen position and resolution.

3 Sync Formats

Supports separate sync, composite sync, and sync-on-green analog signals for compatibility with workstations and standard PCs. (FlexScan L788 only.)

Customer Assurance



The 19" FlexScan L778 and 17" FlexScan L578 bring an exciting new dimension to the sights and sounds of movies, games and other multimedia sources. Movie action will be smoother and sharper, and games will sound punchier and more dynamic. The slim LCD screen fits anywhere, and EIZO even provides an extra-flexible stand, so you can sit in any position and have a perfect view. Choose your preferred size and get ready for real multimedia excitement.

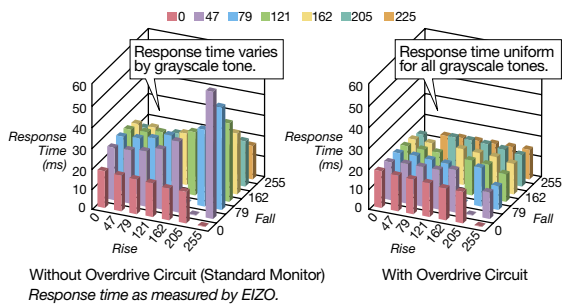


L578 **17"** Color LCD Monitor

L778 **19"** Color LCD Monitor

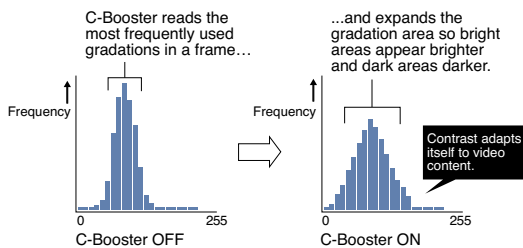
Overdrive Circuit

The overdrive circuit smooths the flow of moving images by adjusting the voltage input for each frame based on image data from the previous three frames. Commonly used in LCD TVs, overdrive improves midtone response time — the time required to transit between gray levels — to 12 ms for both monitors, greatly reducing blurring in moving color images.



C-Booster

C-Booster technology provides sharper and more vivid moving and still pictures by raising contrast levels and enhancing colors. It monitors the gradation ranges and boosts the contrast of the most frequently used range, so bright colors in bright scenes and dark colors in dark scenes stand out in sharper detail. It also computes a running average over a series of frames so that contrast boost is applied smoothly during dark-bright transitions.

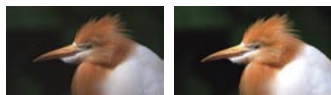


Fine Contrast

For optimum viewing of all types of content, the Fine Contrast function allows the selection of five imaging modes: Text, Picture, Movie, Custom, and sRGB. Each mode has its own settings for image parameters such as color temperature, gamma, and brightness. You can navigate between the modes simply by pressing a button on the front panel. For further convenience, a Fine Contrast mode can be assigned to any application with the bundled ScreenManager® Pro for LCD utility software. When the application is opened, the screen automatically changes to its assigned mode.

1000:1 Contrast Ratio

This outstanding contrast performance makes images on dark backgrounds appear more vivid and ensures that colors retain their richness even in brightly lit rooms.



500:1

1000:1

SRS WOW Technology

Both monitors employ SRS WOW technology that provides a panoramic three-dimensional sound field, greatly increasing the enjoyment of movies and games from compact speakers. This technology consists of three functions. SRS restores imaging information lost in the recording process, so the sound is fuller and more dimensional. TruBass boosts bass performance through small speakers by imaging low frequency tones. FOCUS elevates the sound field to produce a higher and wider listening area with better clarity in the high frequencies.



ArcSwing 2 Stand



A true ergonomic advance, the ArcSwing 2 stand adjusts through a large arc-shaped range of movement. You can position it at eye level or at a low angle akin to reading a book, for best viewing no matter how and where you are using it.

BrightRegulator

This function keeps the monitor at the ideal brightness level under all lighting conditions. A sensor on the front bezel takes readings of the ambient brightness and signals the backlight to adjust the screen brightness accordingly. In a brightly lit room, BrightRegulator increases the screen's brightness level, whereas in a dimly lit room it decreases the brightness, thereby reducing eye fatigue.

USB Hub

Both monitors provide a high speed (480 Mb/s) USB hub with one upstream and two downstream ports. The downstream ports are conveniently located on the side of the monitor for quick connection of peripherals.



Digital and Analog Input Terminals

DVI-D and D-Sub mini 15-pin input terminals allow the monitors to accept both digital and analog inputs. If both types are connected, you can switch between them via a front panel button.

Three Color Options

The cabinet comes in a choice of three colors: off-white, silver, and black.



Customer Assurance



Superb image quality makes these monitors ideal for everything from back office and administrative uses to graphics applications. The ergonomic design features a three-tier front panel arranged for intuitive operation, as well as extremely thin bezels. Fine Contrast and other advanced image control features are included.



L367 15" Color LCD Monitor
(M1700 17" model not shown.)

FEATURES

Fine Contrast Mode Selection

Choose from among five Fine Contrast modes — Text, Picture, Movie, Custom and sRGB — to best suit the application you're using.

Image Mode Assignment

This feature lets you assign any Fine Contrast mode to a specific application. When you open the application, the screen automatically changes to that mode. (FlexScan L367 only.)

Ergonomic Design, Built-in Speakers

With ultra-slim side bezels, these monitors are remarkably space-efficient. Control buttons arranged in a cross pattern on the three-tier front panel are simple and intuitive to use. The desktop stand lets you adjust the monitor height over a range of 50 mm. The monitors comply with VESA mounting standards to allow mounting on a wall or adjustable arm.

Digital and Analog Inputs



DVI-D 24-pin D-Sub 15-pin

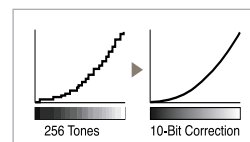
With both DVI-D and D-Sub mini 15-pin inputs, you can use a computer that has either a digital or an analog graphics board (or both if connected to two computers), and quickly switch between the inputs via a front panel button.

Brightness Stabilization

At startup or upon wakeup, an EIZO-patented drift correction function quickly stabilizes the brightness level. In addition, a sensor measures the backlight brightness and compensates for brightness fluctuations caused by the ambient temperature and the passage of time.

10-Bit Gamma Correction

Automatically takes 8-bit input signals (256 tones for each primary color) from the graphics board



and uses a 10-bit look-up table (1,021 tones)

to produce smoother, more accurate gradations of color. Gamma values are also user-adjustable from 1.4 to 3.0 in 0.2 increments. (FlexScan L367 only.)

Detailed Image Control

This function offers independent control of hue, saturation, and gain, and adjustment of color temperature in 500 K increments from 4,000 to 10,000 K (including 9,300 K) for accurate, natural display of color.

Customer Assurance



M1700



M1700



L367



M1700

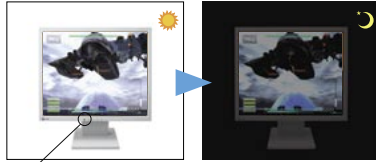


L367

FEATURES

BrightRegulator

This function keeps the screen at the ideal brightness level under all lightning conditions. A sensor on the front panel takes readings of the ambient brightness and signals the backlight to adjust the screen brightness accordingly.



BrightRegulator sensor

Auto Setup

When the monitor detects an analog signal, it automatically adjusts basic screen settings, including clock, phase, position, and size. You don't have to make manual adjustments out of the box — just connect the monitor to the computer and you are assured of optimal screen settings right after startup.

Flexible Mounting

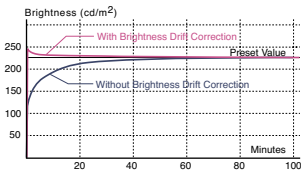
With its slim body and thin bezel design, the FlexScan P1700 occupies a minimum amount of space on the desktop. The monitor complies with VESA mounting standards, so it can be removed from the stand and mounted on a movable arm or wall bracket.



sRGB Mode

Sets the monitor to the international sRGB color space, for color matching with applications and peripherals like scanners, printers and digital cameras.

Brightness Stabilization



At startup or upon wakeup, an EIZO-patented drift correction function quickly stabilizes the brightness

level. In addition, a sensor measures the back-light brightness and compensates for brightness fluctuations caused by the ambient temperature and the passage of time.

Product Information Display

The model name, serial number, and total usage time are all accessible in the OSD menu.

Customer Assurance



The FlexScan P1700 offers a number of thoughtful functions for both corporate and home users. Auto Setup eliminates the need to make manual adjustments, and a light sensor reads the surrounding light conditions and continually adjusts panel brightness for optimum viewing comfort. The supplied stand has a small footprint, and to further save space, the monitor can be mounted on a movable arm or wall bracket.



P1700 17" Color LCD Monitor

The convenience of touch panel monitors makes them a practical choice for places like hospitals, factories, reception areas and retail shops. EIZO touch panel monitors offer superior color and clarity, and feature slim bezels on the top and sides to save space on the desk or counter. Finger touch is standard, with pen touch available when using the optional TP1 dedicated touch pen. EIZO offers a wide range of models to meet your specific requirements.



19" L760T-C
Touch Panel Color LCD Monitor

FEATURES

Analog Capacitive Screen

An analog capacitive panel provides fast touch response, extremely long touch life (minimum 225 million touches), and high optical clarity for performance and longevity.

Communications Protocol

The L760T-C, L362T, and L352T-C offer a touch interface through an RS-232 serial port, and the L560T-C, L363T-C, and L353T-C through a USB port.

High Image Quality

These high performance touch panels feature excellent contrast ratio and brightness, displaying vivid colors and sharp, clear images. Their viewing angles are wide (178° for the L760T-C and L560T-C), with minimal color shift when viewed from the side. An anti-bacterial treatment on the touch panel surface prevents annoying screen reflections.

Brightness Stabilization

At startup or upon wakeup, an EIZO-patented drift correction function quickly stabilizes the brightness level. In addition, a sensor measures the backlight brightness and compensates for brightness fluctua-

tions caused by the ambient temperature and the passage of time.

Digital and Analog Inputs

With both DVI-D and D-Sub mini 15-pin inputs, you can use a computer that has either a digital or an analog graphics board (or both if connected to two computers), and quickly switch between the inputs via a front panel button.

Auto Adjustment

Pressing a button on the front panel automatically adjusts four basic monitor parameters: clock pulse, phase, screen position and resolution.

sRGB Mode

Sets the monitor to the international sRGB color space, for color matching with applications and peripherals like scanners, printers and digital cameras.

Versatile Positioning

Position the screen wherever you like with 82 mm height adjustment, 40° tilt, 70° swivel, and 90° pivot

17" L560T-C
Touch Panel Color LCD Monitor

15" L363TC
Touch Panel Color LCD Monitors

(L362T, L353T-C & L352T-C 15" models not shown)

for portrait mode (FlexScan L760T-C and L560T-C only). The power supply is built in, so there is no separate power brick or cord. All models comply with VESA mounting standards so the panel can be removed from the stand and placed on a movable arm or wall bracket.

Detailed Image Control

This function offers independent control of hue, saturation, and gain, and adjustment of color temperature in 500 K increments from 4,000 to 10,000 K (including 9,300 K) for accurate, natural display of color.

Touch Panel Pointer

For factories or other environments where gloves are required, the dedicated TP1 touch pen is available.



Product Information Display

The model name, serial number, and total usage time are all accessible in the OSD menu.

Customer Assurance

The monitors meet the strictest medical, safety and EMC emission standards, including TÜV/GM, CE and UL2601-1. They also conform to EIZO's own strict Eco Products 2004 and 2002 environmental criteria for design, manufacture, packaging and usage, including the introduction of lead-free solder and chrome-free steel plates.



L363T-C
L353T-C

L760T-C
L560T-C
L362T
L352T-C



FlexScan S2410W



FlexScan S2110W



Model Variations		-	-	
Panel	Size and Type	61 cm (24.1") TFT color LCD panel	53 cm (21.1") TFT color LCD panel	
	Viewing Angles (H, V)	178°, 178° (at contrast ratio of 10:1)	178°, 178° (at contrast ratio of 10:1)	
	Brightness / Contrast	450 cd/m ² / 1000:1	450 cd/m ² / 1000:1	
	Response Time	16 ms (typical)	16 ms (typical)	
	Midtone Response Time	8 ms ¹	8 ms ¹	
	Native Resolution	1920 × 1200	1680 × 1050	
	Active Display Size (H × V)	518.4 × 324.0 mm	453.6 × 283.5 mm	
	Viewable Image Size	Diagonal: 611 mm	Diagonal: 534mm	
	Pixel Pitch	0.270 × 0.270 mm	0.270 × 0.270 mm	
Display Colors	16.77 million from a palette of 1.06 billion	16.77 million from a palette of 1.06 billion		
Available Cabinet Colors		White, Black	White, Black	
Dot Clock		Analog: 202.5 MHz, Digital: 162 MHz	Analog: 150 MHz, Digital: 120 MHz	
Scanning Frequency (H, V)	Analog	24 – 94 kHz, 49 – 86 Hz	24 – 82 kHz, 49 – 86 Hz	
	Digital	31 – 76 kHz, 59 – 61 Hz (VGA Text: 69 – 71 Hz)	31 – 65 kHz, 59 – 61 Hz (VGA Text: 69 – 71 Hz)	
Input Signals		Analog: RGB Analog, Digital: DVI Standard 1.0	Analog: RGB Analog, Digital: DVI Standard 1.0	
Input Terminals		DVI-I 29 pin × 2 (switchable)	DVI-I 29 pin × 2 (switchable)	
USB Ports / Standard		1 upstream, 2 downstream / USB Standard Rev. 2.0	1 upstream, 2 downstream / USB Standard Rev. 2.0	
Plug & Play		VESA DDC 2B	VESA DDC 2B	
Power	Power Requirements	AC 100 – 120 V, 200 – 240 V: 50 / 60 Hz	AC 100 – 120 V, 200 – 240 V: 50 / 60 Hz	
	Power Consumption	110 W (maximum)	80 W (maximum)	
	Power Save Mode	Less than 2 W	Less than 2 W	
Physical Specifications	Height Adjustment Range	95 mm	95 mm	
	Tilt / Swivel / Pivot	60° Up, 5° Down / 172° Right, 172° Left / –	60° Up, 5° Down / 172° Right, 172° Left / –	
	Dimensions (W × H × D)	With Stand: 566 × 358.7 – 480 × 230 mm Without Stand: 566 × 396 × 85 mm	With Stand: 501 × 341.1 – 459.5 × 230 mm Without Stand: 501 × 355 × 85 mm	
	Net Weight	With Stand: 10.2 kg, Without Stand: 7.8 kg	With Stand: 8.2 kg, Without Stand: 5.8 kg	
Auto Brightness Functions		Auto Brightness Stabilization	Auto Brightness Stabilization	
Auto Adjustment Functions		Auto Adjustment, Range Adjustment	Auto Adjustment, Range Adjustment	
Display Mode Options		Fine Contrast (Text, Picture, Movie, sRGB, Custom, WindowMovie ²), Auto Fine Contrast ³	Fine Contrast (Text, Picture, Movie, sRGB, Custom, WindowMovie ²), Auto Fine Contrast ³	
Hardware Portrait Display Function		–	–	
Picture in Picture Function		–	–	
ScreenManager OSD Adjustment Functions	Screen Adjustment	Clock, Phase, Position, Resolution, Brightness, Signal Filter, Screen Size (full screen, enlarge, normal), Smoothing (5 stages), Border Intensity	Clock, Phase, Position, Resolution, Brightness, Signal Filter, Screen Size (full screen, enlarge, normal), Smoothing (5 stages), Border Intensity	
	Color Adjustment	Range Adjustment (RGB), Independent 6-Color Control ² , Gamma, Temperature (14 stages: in 500 K increments from 4,000 K – 10,000 K including 9,300 K), Saturation, Hue, Gain, Reset	Range Adjustment (RGB), Independent 6-Color Control ² , Gamma, Temperature (14 stages: in 500 K increments from 4,000 K – 10,000 K including 9,300 K), Saturation, Hue, Gain, Reset	
	Power Save Settings	Analog	PowerManager (VESA DPMS), Off Timer	PowerManager (VESA DPMS), Off Timer
		Digital	PowerManager (DVI DMPM), Off Timer	PowerManager (DVI DMPM), Off Timer
Other Settings	Signal Settings, Input Priority, Product Information (product name, serial number, resolution, operating time), OSD Menu Settings, Adjustment Lock, Languages (English, French, German, Italian, Japanese, Spanish, Swedish), Reset	Signal Settings, Input Priority, Product Information (product name, serial number, resolution, operating time), OSD Menu Settings, Adjustment Lock, Languages (English, French, German, Italian, Japanese, Spanish, Swedish), Reset		
Certifications and Standards		TCO'03 (white), TCO'99 (black) TÜV/Ergonomics (including ISO 13406-2), TÜV/GS, c-Tick, CE, CB, UL (cTÜVus), CSA (cTÜVus), FCC-B, Canadian ICES-003-B, TÜV/S, VCCI-B, EPA ENERGY STAR [®] , EIZO Eco Products 2004	TCO'03 (white), TCO'99 (black) TÜV/Ergonomics (including ISO 13406-2), TÜV/GS, c-Tick, CE, CB, UL (cTÜVus), CSA (cTÜVus), FCC-B, Canadian ICES-003-B, TÜV/S, VCCI-B, EPA ENERGY STAR [®] , EIZO Eco Products 2004	
Warranty		Five Years	Five Years	

¹ Average response time measured between each grayscale level of 31, 63, 95, 127, 159, 191, and 223. ² WindowMovie mode is selectable only when Auto Fine Contrast is active. ³ Bundled ScreenManager Pro for LCD is necessary to activate Auto Fine Contrast and Independent 6-Color Control. Support for this function varies with the graphics board used. ScreenManager Pro for LCD is compatible with the Microsoft[®] Windows[®] 98SE/Me/2000/XP operating systems only. ⁴ ActiveRotation and ActiveShot cannot be used simultaneously.

With current LCD technology, a panel may contain a limited number of missing or flickering pixels.



FlexScan L997

FlexScan L887

FlexScan L797

–	–	–
54 cm (21.3") TFT color LCD panel	51 cm (20.1") TFT color LCD panel	48 cm (19") TFT color LCD panel
170°, 170° (at contrast ratio of 10:1)	176°, 176° (at contrast ratio of 10:1)	170°, 170° (at contrast ratio of 10:1)
250 cd/m ² / 550:1	250 cd/m ² / 500:1	280 cd/m ² / 450:1
30 ms (typical)	20 ms (typical)	20 ms (typical)
–	–	–
1600 × 1200	1600 × 1200	1280 × 1024
432 × 324 mm	408 × 306 mm	376 × 301 mm
Diagonal: 540 mm	Diagonal: 510 mm	Diagonal: 481 mm
0.270 × 0.270 mm	0.255 × 0.255 mm	0.294 × 0.294 mm
16.77 million from a palette of 1.06 billion	16.77 million from a palette of 1.06 billion	16.77 million from a palette of 1.06 billion
Gray, Black	Gray, Black	Gray, Black
Analog: 202.5 MHz, Digital: 162 MHz	Analog: 202.5 MHz, Digital: 162 MHz	Analog: 135 MHz, Digital: 108 MHz
24 – 100 kHz, 49 – 86 Hz	24 – 94 kHz, 49 – 86 Hz	30 – 82 kHz, 49 – 86 Hz
31 – 100 kHz, 59 – 61 Hz (VGA Text: 69 – 71 Hz)	31 – 76 kHz, 59 – 61 Hz (VGA Text: 69 – 71 Hz)	30 – 65 kHz, 59 – 61 Hz (VGA Text: 69 – 71 Hz)
Analog: RGB Analog, Digital: DVI Standard 1.0	Analog: RGB Analog, Digital: DVI Standard 1.0	Analog: RGB Analog, Digital: DVI Standard 1.0
DVI-I 29 pin × 2 (switchable)	D-Sub mini 15 pin, DVI-I 29 pin (switchable)	DVI-I 29 pin × 2 (switchable)
1 upstream, 2 downstream / USB Standard Rev. 2.0	1 upstream / USB Standard Rev. 2.0	1 upstream, 2 downstream / USB Standard Rev. 2.0
VESA DDC 2B	VESA DDC 2B	VESA DDC 2B
AC 100 – 120 V, 200 – 240 V: 50 / 60 Hz	AC 100 – 120 V, 200 – 240 V: 50 / 60 Hz	AC 100 – 120 V, 200 – 240 V: 50 / 60 Hz
75 W (maximum)	55 W (maximum)	60 W (maximum)
Less than 2 W	Less than 2 W	Less than 3 W
82 mm	82 mm	100 mm
40° Up, 0° Down / 35° Right, 35° Left / 90°	40° Up, 0° Down / 35° Right, 35° Left / 90°	40° Up, 1° Down / 35° Right, 35° Left / 90°
With Stand: 472 × 459 – 541 × 208.5 mm Without Stand: 472 × 373 × 69 mm	With Stand: 443 × 446 – 528 × 208.5 mm Without Stand: 443 × 347 × 69 mm	With Stand: 414 × 409.5 – 509.5 × 202.7 mm Without Stand: 414 × 340 × 62 mm
With Stand: 10.2 kg, Without Stand: 7.0 kg	With Stand: 9.2 kg, Without Stand: 6.2 kg	With Stand: 8.1 kg, Without Stand: 5.8 kg
Auto Brightness Stabilization	Auto Brightness Stabilization	Auto Brightness Stabilization
Auto Adjustment, Range Adjustment	Auto Adjustment, Range Adjustment	Auto Adjustment, Range Adjustment
Fine Contrast (Text, Picture, Movie, sRGB, Custom, External, WindowMovie ²), Auto Fine Contrast ³	Fine Contrast (Text, Picture, Movie, sRGB, Custom, WindowMovie ²), Auto Fine Contrast ³	Fine Contrast (Text, Picture, Movie, sRGB, Custom, External, WindowMovie ²), Auto Fine Contrast ³
ActiveRotation II ⁴	–	–
ActiveShot ⁴	–	–
Clock, Phase, Position, Resolution, Brightness/Contrast, Signal Filter, Screen Size (full screen, enlarge, normal), Smoothing (5 stages), Border Intensity, Picture in Picture (sub window size, position, contrast)	Clock, Phase, Position, Resolution, Brightness, Signal Filter, Screen Size (full screen, enlarge, normal), Smoothing (5 stages), Border Intensity	Clock, Phase, Position, Resolution, Brightness, Contrast, Signal Filter, Screen Size (full screen, enlarge, normal), Smoothing (5 stages), Border Intensity
Range Adjustment (RGB), Emulation ² , Independent 6-Color Control, Gamma, Temperature (14 stages: in 500 K increments from 4,000 K – 10,000 K including 9,300 K), Saturation, Hue, Gain, Reset	Range Adjustment (RGB), Independent 6-Color Control, Gamma, Temperature (14 stages: in 500 K increments from 4,000 K – 10,000 K including 9,300 K), Saturation, Hue, Gain, Reset	Range Adjustment (RGB), Emulation ² , Independent 6-Color Control, Gamma, Temperature (14 stages: in 500 K increments from 4,000 K – 10,000 K including 9,300 K), Saturation, Hue, Gain, Reset
PowerManager (VESA DPMS), Off Timer	PowerManager (VESA DPMS), Off Timer	PowerManager (VESA DPMS), Off Timer
PowerManager (DVI DMPM), Off Timer	PowerManager (DVI DMPM), Off Timer	PowerManager (DVI DMPM), Off Timer
Signal Settings, Input Priority, Product Information (product name, serial number, resolution, operating time), OSD Menu Settings, Adjustment Lock, Languages (English, French, German, Italian, Japanese, Spanish, Swedish), Reset	Signal Settings, Input Priority, Product Information (product name, serial number, resolution, operating time), OSD Menu Settings, Adjustment Lock, Languages (English, French, German, Italian, Japanese, Spanish, Swedish), Reset	Signal Settings, Input Priority, Product Information (product name, serial number, resolution, operating time), OSD Menu Settings, Adjustment Lock, Languages (English, French, German, Italian, Japanese, Spanish, Swedish), Reset
TCO'03 (gray), TCO'99 (black) TÜV/Ergonomics (including ISO 13406-2), TÜV/GS, c-Tick, CE, CB, UL (cTÜVus), CSA (cTÜVus), FCC-B, Canadian ICES-003-B, TÜV/S, VCCI-B, EPA ENERGY STAR®, CCC, EIZO Eco Products 2004	TCO'03 (gray), TCO'99 (black), TÜV/Ergonomics (including ISO 13406-2), TÜV/GS, c-Tick CE, CB, UL (cTÜVus), CSA (cTÜVus), FCC-B, Canadian ICES-003-B, TÜV/S, VCCI-B, EPA ENERGY STAR®, CCC, EIZO Eco Products 2004	TCO'03 (gray), TCO'99 (black) TÜV/Ergonomics (including ISO 13406-2), TÜV/GS, c-Tick, CE, CB, UL (cTÜVus), CSA (cTÜVus), FCC-B, Canadian ICES-003-B, TÜV/S, VCCI-B, EPA ENERGY STAR®, CCC, EIZO Eco Products 2002
Five Years	Five Years	Five Years



FlexScan S1910



FlexScan L788



Model Variations		S1910 (height adjustable stand), S1910-AS (ArcSwing stand)	L788 (height adjustable stand), L788-F (panel only)	
Panel	Size and Type	48 cm (19") TFT color LCD panel	48 cm (19") TFT color LCD panel	
	Viewing Angles (H, V)	178°, 178° (at contrast ratio of 10:1)	178°, 178° (at contrast ratio of 10:1)	
	Brightness / Contrast	250 cd/m ² / 1000:1	250 cd/m ² / 1000:1	
	Response Time	16 ms (typical)	25 ms (typical)	
	Midtone Response Time	12 ms ¹	–	
	Native Resolution	1280 × 1024	1280 × 1024	
	Active Display Size (H × V)	376 × 301 mm	376 × 301 mm	
	Viewable Image Size	Diagonal: 481 mm	Diagonal: 481 mm	
	Pixel Pitch	0.294 × 0.294 mm	0.294 × 0.294 mm	
Display Colors	16.77 million from a palette of 1.06 billion	16.77 million from a palette of 1.06 billion		
Available Cabinet Colors		Gray, Black	Gray, Black	
Dot Clock		Analog: 135 MHz, Digital: 108 MHz	Analog: 135 MHz, Digital: 108 MHz	
Scanning Frequency (H, V)	Analog	24.8 – 80 kHz, 50 – 75 Hz	30 – 82 kHz, 49 – 86 Hz	
	Digital	31 – 64 kHz, 59 – 61 Hz (VGA Text: 69 – 71 Hz)	30 – 65 kHz, 59 – 61 Hz (VGA Text: 69 – 71 Hz)	
Input Signals		Analog: RGB Analog, Digital: DVI Standard 1.0	Analog: RGB Analog, Digital: DVI Standard 1.0	
Input Terminals		D-Sub mini 15 pin, DVI-D 24 pin (switchable)	DVI-I 29 pin × 2 (switchable)	
USB Ports / Standard		1 upstream / USB Standard Rev. 2.0	1 upstream, 2 downstream / USB Standard Rev. 2.0	
Plug & Play		VESA DDC 2B	VESA DDC 2B	
Power	Power Requirements	AC 100 – 120 V, 200 – 240 V: 50 / 60 Hz	AC 100 – 120 V, 200 – 240 V: 50 / 60 Hz	
	Power Consumption	50 W (maximum)	50 W (maximum)	
	Power Save Mode	Less than 2 W	Less than 2 W	
Physical Specifications	Height Adjustment Range	S1910: 100 mm, S1910-AS: 104 mm	100 mm	
	Tilt / Swivel / Pivot	S1910: 30° Up, 0° Down / 35° Right, 35° Left / 90° S1910-AS: 60° Up, 5° Down / 172° Right, 172° Left / –	30° Up, 0° Down / 35° Right, 35° Left / 90°	
	Dimensions (W × H × D)	With Stand (S1910): 404 × 406 – 506 × 205 mm With Stand (S1910-AS): 404 × 288 – 423 × 200 mm Without Stand: 404 × 333 × 60 mm	With Stand: 404 × 406 – 506 × 205 mm Without Stand: 404 × 333 × 60 mm	
	Net Weight	With Stand (S1910): 6.9 kg, With Stand (S1910-AS): 6.7 kg, Without Stand: 4.9 kg	With Stand: 6.8 kg, Without Stand: 4.8 kg	
Auto Brightness Functions		Auto Brightness Stabilization	Auto Brightness Stabilization	
Auto Adjustment Functions		Auto Adjustment, Range Adjustment	Auto Adjustment, Range Adjustment	
Display Mode Options		Fine Contrast (Text, Picture, Movie, sRGB, Custom, WindowMovie ² , Viewer), Auto Fine Contrast ³ , DesktopViewer ³ (Normal, Nature, Portrait, Macro, P.I.M. / Exif Print)	sRGB, Custom	
Hardware Portrait Display Function		–	–	
Picture in Picture Function		–	–	
ScreenManager OSD Adjustment Functions	Screen Adjustment	Clock, Phase, Position, Brightness, Smoothing (5 stages)	Clock, Phase, Position, Resolution, Brightness, Contrast, Signal Filter, Screen Size (full screen, enlarge, normal), Smoothing (5 stages), Border Intensity	
	Color Adjustment	Range Adjustment (RGB), Gamma, Temperature (14 stages: in 500 K increments from 4,000 K – 10,000 K including 9,300 K), Saturation, Hue, Gain, Reset	sRGB Adjustment, Temperature (14 stages: in 500 K increments from 4,000 K – 10,000 K including 9,300 K), Saturation, Hue, Gain, Reset	
	Power Save Settings	Analog	PowerManager (VESA DPMS), Off Timer	PowerManager (VESA DPMS, EIZO MPMS), Off Timer
		Digital	PowerManager (DVI DMPM), Off Timer	PowerManager (DVI DMPM), Off Timer
Other Settings	Signal Settings, VGA selection, Input Priority, Product Information (product name, serial number, resolution, operating time), OSD Menu Settings, Adjustment Lock, Languages (English, French, German, Italian, Japanese, Spanish, Swedish), Reset	Signal Settings, Input Priority, Product Information (product name, serial number, resolution, operating time), OSD Menu Settings, Adjustment Lock, Languages (English, French, German, Italian, Japanese, Spanish, Swedish), Reset		
Certifications and Standards		TCO'03 (gray), TCO'99 (black), TÜV/Ergonomics (including ISO 13406-2), TÜV/GS, c-Tick, CE, CB, UL (cTÜVus), CSA (cTÜVus), FCC-B, Canadian ICES-003-B, TÜV/S, VCCI-B, EPA ENERGY STAR [®] , EIZO Eco Products 2004	TCO'03 (gray), TCO'99 (black) TÜV/Ergonomics (including ISO 13406-2), TÜV/GS, c-Tick, CE, CB, UL (cTÜVus), CSA (cTÜVus), FCC-B, Canadian ICES-003-B, TÜV/S, VCCI-B, EPA ENERGY STAR [®] , CCC, EIZO Eco Products 2004	
Warranty		Five Years	Five Years	

¹ Average response time measured between each grayscale level of 31, 63, 95, 127, 159, 191, and 223. ² WindowMovie mode is selectable only when Auto Fine Contrast is active. ³ Bundled ScreenManager Pro for LCD is necessary to activate Auto Fine Contrast and Independent 6-Color Control. Support for this function varies with the graphics board used. ScreenManager Pro for LCD is compatible with the Microsoft[®] Windows[®] 98SE/Me/2000/XP operating systems only. With current LCD technology, a panel may contain a limited number of missing or flickering pixels.



FlexScan L768

FlexScan L568

L768 (height adjustable stand),
L768-AS (ArcSwing stand), L768-F (panel only)

L568 (height adjustable stand),
L568-AS (ArcSwing stand), L568-F (panel only)

48 cm (19") TFT color LCD panel

43 cm (17") TFT color LCD panel

178°, 178° (at contrast ratio of 10:1)

178°, 178° (at contrast ratio of 10:1)

250 cd/m² / 1000:1

250 cd/m² / 1000:1

25 ms (typical)

25 ms (typical)

–

–

1280 × 1024

1280 × 1024

376 × 301 mm

338 × 270 mm

Diagonal: 481 mm

Diagonal: 432 mm

0.294 × 0.294 mm

0.264 × 0.264 mm

16.77 million from a palette of 1.06 billion

16.77 million from a palette of 1.06 billion

Gray, Black

Gray, Black

Analog: 135 MHz, Digital: 108 MHz

Analog: 135 MHz, Digital: 108 MHz

24.8 – 80 kHz, 50 – 75 Hz

24.8 – 80 kHz, 50 – 75 Hz

31 – 64 kHz, 59 – 61 Hz (VGA Text: 69 – 71 Hz)

31 – 64 kHz, 59 – 61 Hz (VGA Text: 69 – 71 Hz)

Analog: RGB Analog, Digital: DVI Standard 1.0

Analog: RGB Analog, Digital: DVI Standard 1.0

D-Sub mini 15 pin, DVI-D 24 pin (switchable)

D-Sub mini 15 pin, DVI-D 24 pin (switchable)

1 upstream / USB Standard Rev. 2.0

1 upstream / USB Standard Rev. 2.0

VESA DDC 2B

VESA DDC 2B

AC 100 – 120 V, 200 – 240 V: 50 / 60 Hz

AC 100 – 120 V, 200 – 240 V: 50 / 60 Hz

40 W (maximum)

40 W (maximum)

Less than 2 W

Less than 2 W

L768: 100 mm, L768-AS: 104 mm

L568: 100 mm, L568-AS: 104 mm

L768: 30° Up, 0° Down / 35° Right, 35° Left / 90°
L768-AS: 60° Up, 5° Down / 172° Right, 172° Left / –

L568: 30° Up, 0° Down / 35° Right, 35° Left / 90°
L568-AS: 60° Up, 5° Down / 172° Right, 172° Left / –

With Stand (L768): 404 × 406 – 506 × 205 mm
With Stand (L768-AS): 404 × 288 – 423 × 200 mm
Without Stand: 404 × 333 × 60 mm

With Stand (L568): 362 × 389 – 489 × 205 mm
With Stand (L568-AS): 362 × 280 – 406 × 200 mm
Without Stand: 362 × 299 × 55 mm

With Stand (L768): 6.8 kg
With Stand (L768-AS): 6.6 kg, Without Stand: 4.8 kg

With Stand (L568): 5.8 kg
With Stand (L568-AS): 5.6 kg, Without Stand: 3.7 kg

Auto Brightness Stabilization

Auto Brightness Stabilization

Auto Adjustment, Range Adjustment

Auto Adjustment, Range Adjustment

Fine Contrast (Text, Picture, Movie, sRGB, Custom, WindowMovie², Viewer³), Auto Fine Contrast³, DesktopViewer² (Normal, Nature, Portrait, Macro, P.I.M. / Exif Print)

Fine Contrast (Text, Picture, Movie, sRGB, Custom, WindowMovie², Viewer³), Auto Fine Contrast³, DesktopViewer² (Normal, Nature, Portrait, Macro, P.I.M. / Exif Print)

–

–

–

–

Clock, Phase, Position, Resolution, Brightness, Signal Filter, Smoothing (5 stages)

Clock, Phase, Position, Resolution, Brightness, Signal Filter, Smoothing (5 stages)

Range Adjustment (RGB), Gamma, Temperature (14 stages: in 500 K increments from 4,000 K – 10,000 K including 9,300 K), Saturation, Hue, Gain, Reset

Range Adjustment (RGB), Gamma, Temperature (14 stages: in 500 K increments from 4,000 K – 10,000 K including 9,300 K), Saturation, Hue, Gain, Reset

PowerManager (VESA DPMS), Off Timer

PowerManager (VESA DPMS), Off Timer

PowerManager (DVI DMPM), Off Timer

PowerManager (DVI DMPM), Off Timer

Signal Settings, VGA selection, Input Priority, Product Information (product name, serial number, resolution, operating time), OSD Menu Settings, Adjustment Lock, Languages (English, French, German, Italian, Japanese, Spanish, Swedish), Reset

Signal Settings, VGA selection, Input Priority, Product Information (product name, serial number, resolution, operating time), OSD Menu Settings, Adjustment Lock, Languages (English, French, German, Italian, Japanese, Spanish, Swedish), Reset

TCO'03 (gray), TCO'99 (black) TÜV/Ergonomics (including ISO 13406-2), TÜV/GS, c-Tick, CE, CB, UL (cTÜVus), CSA (cTÜVus), FCC-B, Canadian ICES-003-B, TÜV/S, VCCI-B, EPA ENERGY STAR[®], CCC, EIZO Eco Products 2004

TCO'03 (gray), TCO'99 (black) TÜV/Ergonomics (including ISO 13406-2), TÜV/GS, c-Tick, CE, CB, UL (cTÜVus), CSA (cTÜVus), FCC-B, Canadian ICES-003-B, TÜV/S, VCCI-B, EPA ENERGY STAR[®], CCC, EIZO Eco Products 2004

Five Years

Five Years



FlexScan L778



FlexScan L578



Model Variations		-	-	
Panel	Size and Type	48 cm (19") TFT color LCD panel	43 cm (17") TFT color LCD panel	
	Viewing Angles (H, V)	178°, 178° (at contrast ratio of 10:1)	178°, 178° (at contrast ratio of 10:1)	
	Brightness / Contrast	250 cd/m ² / 1000:1	250 cd/m ² / 1000:1	
	Response Time	16 ms (typical)	16 ms (typical)	
	Midtone Response Time	12 ms ¹ (typical)	12 ms ¹ (typical)	
	Native Resolution	1280 × 1024	1280 × 1024	
	Active Display Size (H × V)	376 × 301 mm	338 × 270 mm	
	Viewable Image Size	Diagonal: 481 mm	Diagonal: 432 mm	
	Pixel Pitch	0.294 × 0.294 mm	0.264 × 0.264 mm	
Display Colors	16.77 million from a palette of 1.06 billion	16.77 million from a palette of 1.06 billion		
Available Cabinet Colors		Off-White, Black, Silver	Off-White, Black, Silver	
Dot Clock		Analog: 135 MHz, Digital: 108 MHz	Analog: 135 MHz, Digital: 108 MHz	
Scanning Frequency (H, V)	Analog	24.8 – 80 kHz, 50 – 75 Hz	24.8 – 80 kHz, 50 – 75 Hz	
	Digital	31 – 64 kHz, 59 – 61 Hz (VGA Text: 69 – 71 Hz)	31 – 64 kHz, 59 – 61 Hz (VGA Text: 69 – 71 Hz)	
Input Signals		Analog: RGB Analog, Digital: DVI Standard 1.0	Analog: RGB Analog, Digital: DVI Standard 1.0	
Input Terminals		D-Sub mini 15 pin, DVI-D 24 pin (switchable)	D-Sub mini 15 pin, DVI-D 24 pin (switchable)	
USB Ports / Standard		1 upstream, 2 downstream / USB Standard Rev. 2.0	1 upstream, 2 downstream / USB Standard Rev. 2.0	
Plug & Play		VESA DDC 2B	VESA DDC 2B	
Power	Power Requirements	AC 100 – 120 V, 200 – 240 V: 50 / 60 Hz	AC 100 – 120 V, 200 – 240 V: 50 / 60 Hz	
	Power Consumption	55 W (maximum)	50 W (maximum)	
	Power Save Mode	Less than 2 W	Less than 2 W	
Physical Specifications	Height Adjustment Range	104 mm	104 mm	
	Tilt / Swivel / Pivot	60° Up, 5° Down / 172° Right, 172° Left / –	60° Up, 5° Down / 172° Right, 172° Left / –	
	Dimensions (W × H × D)	With Stand: 483 × 288 – 441 × 200 mm Without Stand: 483 × 370 × 60 mm	With Stand: 441 × 274.5 – 423.5 × 200 mm Without Stand: 441 × 335 × 55 mm	
	Net Weight	With Stand: 7.1 kg, Without Stand: 5.3 kg	With Stand: 5.6 kg, Without Stand: 3.7 kg	
Auto Brightness Functions		Auto Brightness Stabilization, BrightRegulator	Auto Brightness Stabilization, BrightRegulator	
Auto Adjustment Functions		Auto Adjustment	Auto Adjustment	
Display Mode Options		Fine Contrast (Text, Picture, Movie, sRGB, Custom, WindowMovie ²), Auto Fine Contrast ³	Fine Contrast (Text, Picture, Movie, sRGB, Custom, WindowMovie ²), Auto Fine Contrast ³	
ScreenManager OSD Adjustment Functions	Screen Adjustment	Clock, Phase, Position, Brightness, Smoothing (5 stages)	Clock, Phase, Position, Brightness, Smoothing (5 stages)	
	Color Adjustment	Range Adjustment (RGB), Gamma, Temperature (14 stages: in 500 K increments from 4,000 K – 10,000 K including 9,300 K), Saturation, Hue, Gain, C-Booster, Reset	Range Adjustment (RGB), Gamma, Temperature (14 stages: in 500 K increments from 4,000 K – 10,000 K including 9,300 K), Saturation, Hue, Gain, C-Booster, Reset	
	Power Save Settings	Analog	VESA DPMS (Auto), Off Timer	VESA DPMS (Auto), Off Timer
		Digital	DVI DMPM (Auto), Off Timer	DVI DMPM (Auto), Off Timer
	Audio	Volume, Mute, Surround, Tone (treble, bass), Balance, Power Save, Reset	Volume, Mute, Surround, Tone (treble, bass), Balance, Power Save, Reset	
Other Settings	Signal Settings, Product Information (product name, serial number, usage time), OSD Menu Settings, Adjustment Lock, Languages (English, French, German, Italian, Japanese, Spanish, Swedish), Reset	Signal Settings, Product Information (product name, serial number, usage time), OSD Menu Settings, Adjustment Lock, Languages (English, French, German, Italian, Japanese, Spanish, Swedish), Reset		
Audio		Dual 2 W built-in speakers, dual input /headphone jacks	Dual 2 W built-in speakers, dual inputs /headphone jacks	
Certifications and Standards		TCO'03 (off-white), TCO'99 (black, silver), TÜV/Ergonomics (including ISO 13406-2), TÜV/GS, c-Tick, CE, CB, UL (cTÜVus), CSA (cTÜVus), FCC-B, Canadian ICES-003-B, TÜV/S, VCCI-B, EPA ENERGY STAR®, CCC, EIZO Eco Products 2004	TCO'03 (off-white), TCO'99 (black, silver), TÜV/Ergonomics (including ISO 13406-2), TÜV/GS, c-Tick, CE, CB, UL (cTÜVus), CSA (cTÜVus), FCC-B, Canadian ICES-003-B, TÜV/S, VCCI-B, EPA ENERGY STAR®, CCC, EIZO Eco Products 2004	
Warranty		Five Years	Five Years	

¹ Average response time measured between each grayscale level of 31, 63, 95, 127, 159, 191, and 223. ² WindowMovie mode is selectable only when Auto Fine Contrast is active. ³ Bundled ScreenManager Pro for LCD is necessary to activate Auto Fine Contrast and Independent 6-Color Control. Support for this function varies with the graphics board used. ScreenManager Pro for LCD is compatible with the Microsoft® Windows® 98SE/Me/2000/XP operating systems only. With current LCD technology, a panel may contain a limited number of missing or flickering pixels.



FlexScan M1700



FlexScan L367



FlexScan P1700



M1700 (height adjustable stand), M1700-F (panel only)	L367 (height adjustable stand), L367-F (panel only)	–
43 cm (17") TFT color LCD panel	38 cm (15") TFT color LCD panel	43 cm (17") TFT color LCD panel
170°, 155° (at contrast ratio of 5:1)	160°, 150° (at contrast ratio of 10:1)	170°, 155° (at contrast ratio of 5:1)
300 cd/m ² / 700:1	250 cd/m ² / 450:1	300 cd/m ² / 700:1
8 ms (typical)	25 ms (typical)	8 ms (typical)
–	–	–
1280 × 1024	1024 × 768	1280 × 1024
337.9 × 270.3 mm	304 × 228 mm	337.9 × 270.3 mm
Diagonal: 432 mm	Diagonal: 380 mm	Diagonal: 432 mm
0.264 × 0.264 mm	0.297 × 0.297 mm	0.264 × 0.264 mm
16.19 million (maximum)	16.77 million from a palette of 1.06 billion	16.19 million (maximum)
Gray, Black	Gray, Black	Gray, Black
Analog: 135 MHz, Digital: 108 MHz	Analog: 80 MHz, Digital: 65 MHz	135 MHz
24.8 – 80 kHz, 50 – 75 Hz	24.8 – 61 kHz, 55 – 75 Hz	24.8 – 80 kHz, 50 – 75.1 Hz
31 – 64 kHz, 59 – 61 Hz (VGA Text: 69 – 71 Hz)	31 – 49 kHz, 59 – 61 Hz (VGA Text: 69 – 71 Hz)	–
Analog: RGB Analog, Digital: DVI Standard 1.0	Analog: RGB Analog, Digital: DVI Standard 1.0	Analog: RGB Analog
D-Sub mini 15 pin, DVI-D 24 pin (switchable)	D-Sub mini 15 pin, DVI-D 24 pin (switchable)	D-Sub mini 15 pin
–	1 upstream / USB Standard Rev. 1.1	–
VESA DDC 2B	VESA DDC 2B	VESA DDC 2B
AC 100 – 120 V, 200 – 240 V: 50 / 60 Hz	AC 100 – 120 V, 200 – 240 V: 50 / 60 Hz	AC 100 – 120 V, 200 – 240 V: 50 / 60 Hz
45 W (maximum)	28 W (maximum)	35 W (maximum)
Less than 2 W	Less than 3 W	Less than 1 W
50 mm	50 mm	–
30° Up, 5° Down	30° Up, 5° Down / – / –	30° Up, 5° Down / – / –
With Stand: 368 × 375 – 425 × 198 mm Without Stand: 368 × 343 × 52 mm	With Stand: 326 × 329.5 – 379.5 × 173 mm	With Stand: 369 × 385.2 × 192 mm Without Stand: 369 × 307 × 59.5 mm
With Stand: 5.5 kg Without Stand: 4.1 kg	With Stand: 3.7 kg, Without Stand: 2.5 kg	With Stand: 4.2 kg Without Stand: 3.4 kg
Auto Brightness Stabilization	Auto Brightness Stabilization	Auto Brightness Stabilization, BrightRegulator
Auto Adjustment, Range Adjustment	Auto Adjustment, Range Adjustment	Auto Setup, Range Adjustment
Fine Contrast (Text, Picture, Movie, sRGB, Custom)	Fine Contrast (Text, Picture, Movie, sRGB, Custom, WindowMovie ¹ , Viewer ²), Auto Fine Contrast ³ , DesktopViewer ³ (Normal, Nature, Portrait, Macro, P.I.M. / Exif Print)	sRGB, Custom
Clock, Phase, Position, Brightness, Smoothing (5 stages)	Clock, Phase, Position, Resolution, Brightness, Signal Filter, Smoothing (5 stages)	Clock, Phase, Position
Range Adjustment (RGB), Gamma, Temperature (14 stages: in 500 K increments from 4,000 K – 10,000 K including 9,300 K), Saturation, Hue, Gain, Reset	Range Adjustment (RGB), Gamma, Temperature (14 stages: in 500 K increments from 4,000 K – 10,000 K including 9,300 K), Saturation, Hue, Gain, Reset	Gain, Temperature (off, 6,500 K, 9,300 K)
PowerManager (VESA DPMS), Off Timer	PowerManager (VESA DPMS), Off Timer	VESA DPMS (Auto), Off Timer
PowerManager (DVI DMPM), Off Timer	PowerManager (DVI DMPM), Off Timer	–
Volume, Mute	–	–
Signal Settings, VGA Selection, Signal Switching, Product Information (product name, serial number, operating time), OSD Menu Settings, Adjustment Lock, Languages (English, French, German, Italian, Japanese, Spanish, Swedish), Reset	Signal Settings, VGA Selection, Signal Switching, Product Information (product name, serial number, operating time), OSD Menu Settings, Adjustment Lock, Languages (English, French, German, Italian, Japanese, Spanish, Swedish), Sound (volume, mute), Reset	Product Information (product name, serial number, operating time), Adjustment Lock, Languages (English, French, German, Italian, Japanese, Spanish, Swedish), Reset
Dual 1 W built-in speakers, input/headphone jacks	Dual 1 W built-in speakers, input/headphone jacks	–
TCO'03 (gray), TCO'99 (black), TÜV/Ergonomics (including ISO 13406-2), TÜV/GS, c-Tick, CE, CB, UL (cTÜVus), CSA (cTÜVus), FCC-B, Canadian ICES-003-B, TÜV/S, VCCI-B, EPA ENERGY STAR®, EIZO Eco Products 2004	TCO'03 (gray), TCO'99 (black) TÜV/Ergonomics (including ISO 13406-2), TÜV/GS, c-Tick, CE, CB, UL (cTÜVus), CSA (cTÜVus), FCC-B, Canadian ICES-003-B, TÜV/S, VCCI-B, EPA ENERGY STAR®, CCC, EIZO Eco Products 2002	TCO'03 (gray), TCO'99 (black), TÜV/Ergonomics (including ISO 13406-2), TÜV/GS, c-Tick, CE, CB, UL (cTÜVus), CSA (cTÜVus), FCC-B, Canadian ICES-003-B, TÜV/S, VCCI-B, EPA ENERGY STAR®, EIZO Eco Products 2004
Five Years	Three Years	Five Years

¹ WindowMovie mode is selectable only when Auto Fine Contrast is active. ² Viewer mode is selectable only when DesktopViewer is active. ³ Bundled ScreenManager Pro for LCD is necessary to activate Auto Fine Contrast and Independent 6-Color Control. Support for this function varies with the graphics board used. ScreenManager Pro for LCD is compatible with the Microsoft® Windows® 98SE/Me/2000/XP operating systems only. With current LCD technology, a panel may contain a limited number of missing or flickering pixels.

SPECIFICATIONS



FlexScan L760T-C

FlexScan L560T-C

Panel	Size and Type		48 cm (19") TFT color LCD panel	43 cm (17") TFT color LCD panel
	Viewing Angles (H, V)		178°, 178° (at contrast ratio of 10:1)	178°, 178° (at contrast ratio of 10:1)
	Brightness / Contrast		180 cd/m ² / 1000:1	180 cd/m ² / 1000:1
	Response Time		20 ms (typical)	25 ms (typical)
	Native Resolution		1280 × 1024	1280 × 1024
	Active Display Size (H × V)		376 × 301 mm	338 × 270 mm
	Viewable Image Size		Diagonal: 481 mm	Diagonal: 432 mm
	Pixel Pitch		0.294 × 0.294 mm	0.264 × 0.264 mm
	Display Colors		16.77 million from a palette of 1.06 billion	16.77 million from a palette of 1.06 billion
Available Cabinet Colors			Gray, Black	Gray, Black
Dot Clock			Analog: 135 MHz, Digital: 109 MHz	Analog: 135 MHz, Digital: 109 MHz
Scanning Frequency (H, V)		Analog	30 – 81 kHz, 49.5 – 75.5 Hz	30 – 81 kHz, 49.5 – 75.5 Hz
		Digital	30 – 65 kHz, 59 – 61 Hz (VGA Text: 70 Hz)	30 – 65 kHz, 59 – 61 Hz (VGA Text: 70 Hz)
Input Signals			Analog: RGB Analog, Digital: DVI Standard 1.0	Analog: RGB Analog, Digital: DVI Standard 1.0
Input Terminals			D-Sub mini 15 pin, DVI-D 24 pin (switchable)	D-Sub mini 15 pin, DVI-D 24 pin (switchable)
Plug & Play			VESA DDC 2B	VESA DDC 2B
Power	Power Requirements		AC 100 – 120 V, 200 – 240 V: 50 / 60 Hz	AC 100 – 120 V, 200 – 240 V: 50 / 60 Hz
	Power Consumption		40 W (maximum)	35 W (maximum)
	Power Save Mode		–	–
Physical Specifications	Height Adjustment Range		82 mm	82 mm
	Tilt / Swivel / Pivot		40° Up, 0° Down / 35° Right, 35° Left / 90°	40° Up, 0° Down / 35° Right, 35° Left / 90°
	Dimensions (W × H × D)		With Stand: 414 × 442.5 – 524.5 × 208.5 mm Without Stand: 414 × 340 × 64 mm	With Stand: 380 × 432.5 – 514.5 × 178 mm Without Stand: 380 × 353 × 58 mm
	Net Weight		With Stand: 9.0 kg, Without Stand: 6.0 kg	With Stand: 8.2 kg, Without Stand: 5.2 kg
Auto Brightness Functions			Auto Brightness Stabilization	Auto Brightness Stabilization
Auto Adjustment Functions			Auto Adjustment, Range Adjustment	Auto Adjustment, Range Adjustment
Display Mode Options			sRGB, Custom	sRGB, Custom
ScreenManager OSD Adjustment Functions	Screen Adjustment		Clock, Phase, Position, Brightness, Smoothing (5 stages)	Clock, Phase, Position, Brightness, Smoothing (5 stages)
	Color Adjustment		Range Adjustment (RGB), Gamma, Temperature (14 stages: in 500 K increments from 4,000 K – 10,000 K including 9,300 K), Saturation, Hue, Gain, Reset	Range Adjustment (RGB), Gamma, Temperature (14 stages: in 500 K increments from 4,000 K – 10,000 K including 9,300 K), Saturation, Hue, Gain, Reset
	Power Save Settings	Analog	Off Timer	Off Timer
		Digital	Off Timer	Off Timer
Other Settings		Signal Settings, VGA Selection, Product Information (product name, serial number, resolution, operating time), OSD Menu Settings, Adjustment Lock, Languages (English, French, German, Italian, Japanese, Spanish, Swedish), Reset	Signal Settings, VGA Selection, Product Information (product name, serial number, resolution, operating time), OSD Menu Settings, Adjustment Lock, Languages (English, French, German, Italian, Japanese, Spanish, Swedish), Reset	
Audio			–	Dual 1 W built-in speakers, input/headphone jacks
Certifications and Standards			TÜV/GM (EN60601-1), CE Medical Device Directive, CB (IEC60601-1, IEC60950), cTUVus (UL2601-1, CSA C22.2 No. 601-1), FCC-B, Canadian ICES-003-B, VCCI-B, CCC, EIZO Eco Products 2002	TÜV/GM (EN60601-1), CE Medical Device Directive, CB (IEC60601-1, IEC60950), cTUVus (UL2601-1, CSA C22.2 No. 601-1), FCC-B, Canadian ICES-003-B, VCCI-B, CCC, EIZO Eco Products 2002
Warranty			Three Years	Three Years
Touch Panel	Touch Panel Type		Analog Capacitive (finger touch)	Analog Capacitive (finger touch)
	Optical Clarity		91.5%	91.5%
	Touch Life		225 million touches (minimum)	225 million touches (minimum)
	Compatible OS		Windows 2000 / XP	Windows 2000 / XP
	Communications Protocol		RS-232C	USB

With current LCD technology, a panel may contain a limited number of missing or flickering pixels.

FlexScan L363T-C
FlexScan L362T



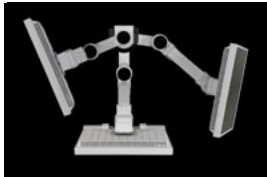
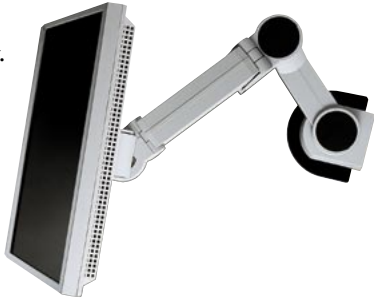
FlexScan L353T-C
FlexScan L352T-C



38 cm (15") TFT color LCD panel	38 cm (15") TFT color LCD panel
170°, 170° (at contrast ratio of 10:1)	160°, 150° (at contrast ratio of 5:1)
180 cd/m ² / 400:1	180 cd/m ² / 450:1
55 ms (typical)	25 ms (typical)
1024 × 768	1024 × 768
304 × 228 mm	304 × 228 mm
Diagonal: 380 mm	Diagonal: 380 mm
0.297 × 0.297 mm	0.297 × 0.297 mm
16.77 million	16.77 million
Gray, Black	Gray, Black
Analog: 79 MHz, Digital: 66 MHz	Analog: 79 MHz, Digital: 66 MHz
24 – 61 kHz, 55 – 75 Hz	24 – 61 kHz, 55 – 75 Hz
31 – 49 kHz, 59 – 61 Hz (VGA Text: 70 Hz)	31 – 49 kHz, 59 – 61 Hz (VGA Text: 70 Hz)
Analog: RGB Analog, Digital: DVI Standard 1.0	Analog: RGB Analog, Digital: DVI Standard 1.0
D-Sub mini 15 pin, DVI-D 24 pin (switchable)	D-Sub mini 15 pin, DVI-D 24 pin (switchable)
VESA DDC 2B	VESA DDC 2B
AC 100 – 120 V, 200 – 240 V: 50 / 60 Hz	AC 100 – 120 V, 200 – 240 V: 50 / 60 Hz
40 W (maximum)	35 W (maximum)
Less than 3 W	Less than 3 W
–	–
30° Up, 3° Down / –	30° Up, 3° Down / –
With Stand: 346 × 369 × 157 mm Without Stand: 346 × 301 × 54.5 mm	With Stand: 346 × 369 × 157 mm Without Stand: 346 × 301 × 54.5 mm
With Stand: 5.0 kg, Without Stand: 4.1 kg	With Stand: 5.0 kg, Without Stand: 4.1 kg
Auto Brightness Stabilization	Auto Brightness Stabilization
Auto Adjustment, Range Adjustment	Auto Adjustment, Range Adjustment
sRGB, Custom	sRGB, Custom
Clock, Phase, Position, Brightness, Smoothing (5 stages)	Clock, Phase, Position, Brightness, Smoothing (5 stages)
Range Adjustment (RGB), Gamma, Temperature (14 stages: in 500 K increments from 4,000 K – 10,000 K including 9,300 K), Saturation, Hue, Gain, Reset	Range Adjustment (RGB), Gamma, Temperature (14 stages: in 500 K increments from 4,000 K – 10,000 K including 9,300 K), Saturation, Hue, Gain, Reset
VESA DPMS, Off Timer	VESA DPMS, Off Timer
DVI DMPM, Off Timer	DVI DMPM, Off Timer
Signal Settings, VGA Selection, Signal Switching, Product Information (product name, serial number, operating time), OSD Menu Settings, Adjustment Lock, Languages (English, French, German, Italian, Japanese, Spanish, Swedish)	Signal Settings, VGA Selection, Signal Switching, Product Information (product name, serial number, operating time), OSD Menu Settings, Adjustment Lock, Languages (English, French, German, Italian, Japanese, Spanish, Swedish)
Dual 1 W built-in speakers, input/headphone jacks	Dual 1 W built-in speakers, input/headphone jacks
TÜV/GM (EN60601-1), c-Tick, CE Medical Device Directive, CB (IEC60601-1), cTUVus (UL2601-1, CSA C22.2 No. 601-1), FCC-B, Canadian ICES-003-B, VCCI-B, EPA ENERGY STAR®, CCC, EIZO Eco Products 2002 (L362T), EIZO Eco Products 2004 (L363T-C)	TÜV/GM (EN60601-1), c-Tick, CE Medical Device Directive, CB (IEC60601-1), cTUVus (UL2601-1, CSA C22.2 No. 601-1), FCC-B, Canadian ICES-003-B, VCCI-B, EPA ENERGY STAR®, CCC, EIZO Eco Products 2002 (L352T-C), EIZO Eco Products 2004 (L353T-C)
Three Years	Three Years
Analog Capacitive (finger touch)	Analog Capacitive (finger touch)
84%	84%
225 million touches (minimum)	225 million touches (minimum)
Windows 2000 / XP	Windows 2000 / XP
L362T: RS-232C, L363T-C: USB	L352T: RS-232C, L353T-C: USB

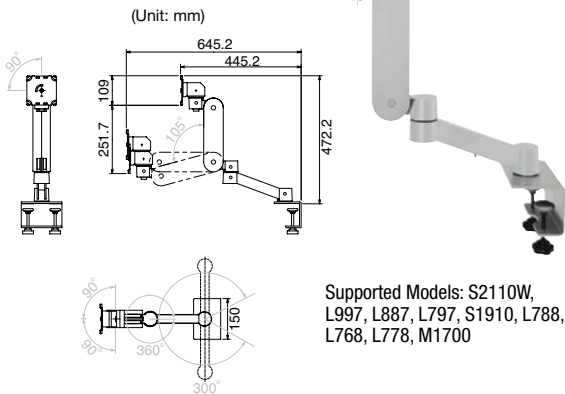
Flexible Arms

Adjust tilt, swivel, and height for best visibility when you're seated or standing, and when you won't be using the monitor for a while move it completely out of the way. The LA-131-D and LA-130-D feature three axes of movement and the LA-120-D two axes. Available in gray or black.

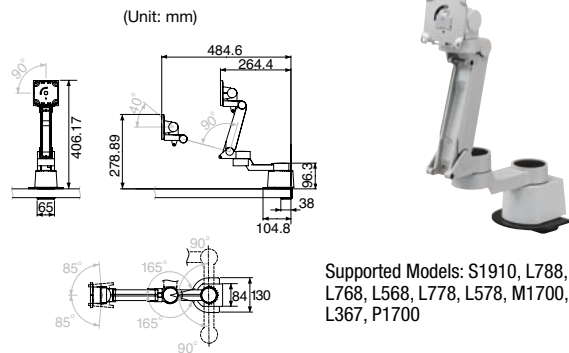


Move your monitor across the desktop to show those seated around you

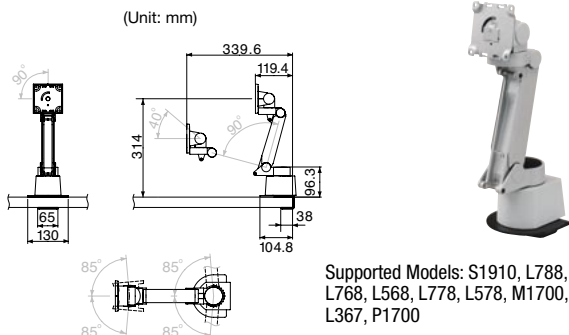
LA-131-D



LA-130-D



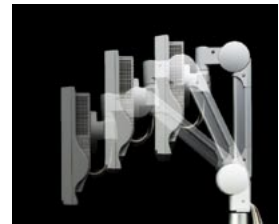
LA-120-D



Flexible Arms

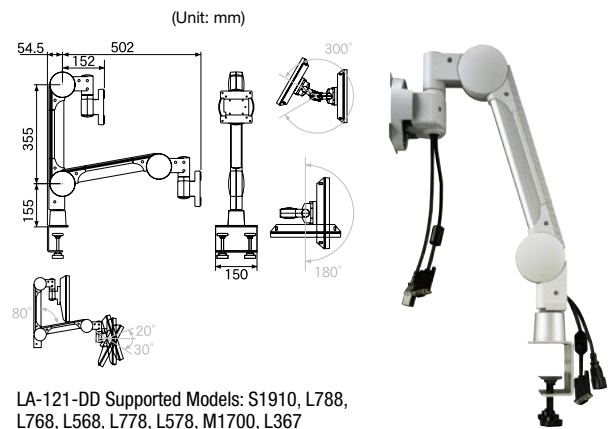
Internal cable housing and tilt, swivel, and height adjustment capabilities provide wide-ranging placement flexibility while contributing to a clutter-free desktop. The LA-121-DD includes a built-in DVI-D (digital) cable, and the LA-121-DA has a D-Sub (analog) cable.

Available in gray or black.



Wide movement range for optimal positioning

LA-121-DD LA-121-DA



Wall Mount Arms

Mount your monitor on a wall and adjust the screen's position as necessary. The LA-030-W includes three axes of movement allowing it to be extended more

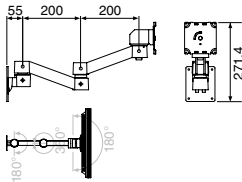


than 500 mm away from or placed against the wall when not in use. The LA-010-W and LA-011-W are available in black and the LA-030-W in gray or black.



LA-030-W

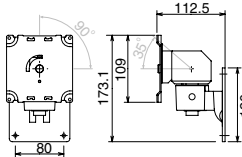
(Unit: mm)



Supported Models: S2110W, L997, L887, L797, S1910, L788, L768, L778, M1700

LA-011-W

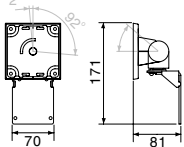
(Unit: mm)



Supported Models: S2110W, L997, L887, L797, S1910, L788, L768, L778, M1700

LA-010-W

(Unit: mm)



Supported Models: S1910, L788, L768, L568, L778, L578, M1700, L367, P1700

Dual Height Adjustable Stands

Mount two panels in either portrait or landscape orientation. Height is adjustable in six stages and cable housing in the back of the stand contributes to a clutter-free desktop. Available in gray or black.

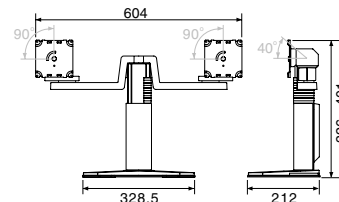


Height adjustable in 6 stages



LS-HM1-D

(Unit: mm)

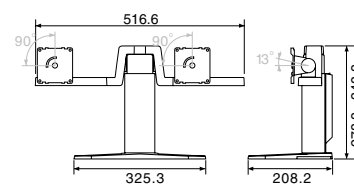


Supported Models: L997, L887, L797, S1910, L788, L768, L568, L578, M1700



LS-HM0-D

(Unit: mm)



Supported Models: L568, M1700, L367, P1700

Height Adjustable Stands



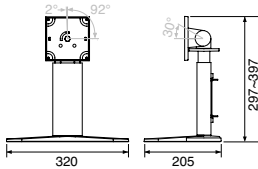
These stands feature 100 mm adjustment along with 41° tilt and 70° swivel. Most models also pivot 90° viewing in portrait mode. A cable holder in the back prevents desktop clutter. Available in gray or black.



100 mm free height adjustment

LS-H71-D

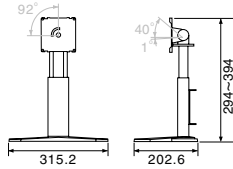
(Unit: mm)



Supported Models: S1910, L788, L768

LS-H63-D

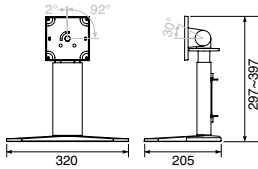
(Unit: mm)



Supported Models: S2110W, L797, L778

LS-H52-D

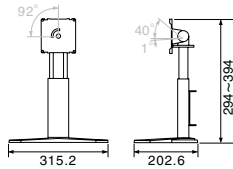
(Unit: mm)



Supported Models: L568, L578

LS-H51-D

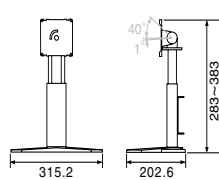
(Unit: mm)



Supported Model: M1700

LS-H32-D

(Unit: mm)



Supported Model: L367



Height Adjustable Stands

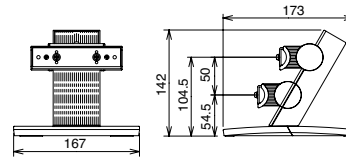
Increase your viewing comfort with the 50 mm height and 35° tilt adjustment offered by this stand. Available in gray or black.



50 mm height adjustment, 35° tilt

LS-H33-D

(Unit: mm)



Supported Model: L367



ArcSwing Stands

These stands provide extremely flexible positioning, with 60° tilt, 172° swivel and 104 mm height adjustment. You

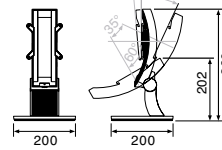
can also easily change the screen angle, even lowering it to a position akin to reading a book. Available in gray or black.



104 mm height adjustment, 60° tilt

LS-A70-D

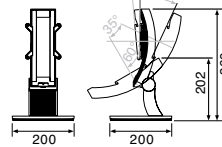
(Unit: mm)



Supported Models: S1910, L788, L768

LS-A50-D

(Unit: mm)



Supported Models: L568, L578



LCD Panel Protectors

Available for all FlexScan models, these sheets are easy to place over the screen surface, allow 87% light transmission (90% for the FP-2400W, FP-2100W, FP-702, and FP-505), and provide protection against dust and scratches. The non-glare coating reduces light reflection and resulting eye-fatigue. (FP-2400W, FP-2100W, FP-702, and FP-505 include both non-glare and glossy sides.)



Models	Supported Models
FP-2400W	S2410W
FP-2100W	S2110W
FP-901	L997
FP-801	L887
FP-702	L797, S1910, L788, L768, L778
FP-505	L568, L578, M1700, P1700
FP-301	L367

Touch Panel Pointer



Dedicated touch pen for applications where the use of gloves is required.

TP1

Supported Models: L760T-C, L560T-C, L363T-C, L362T, L353T-C, L352T-C

Client Management Software

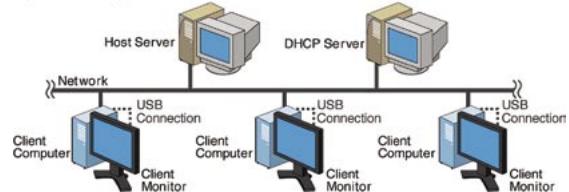
Designed for large-scale networks, Screen Administrator™ enables system administrators to perform key set-up and management tasks from a single host server on Windows®-based client PCs and select EIZO monitors.



Primary benefits:

- Configuration and management tasks of each client PC directly from the server such as assigning an IP address and enabling connection to DNS and/or WINS servers.
- Verification of model name, serial number, usage time, resolution and other information for each client monitor.
- Remote installation of Screen Administrator 2 on all client PCs.
- Support for Microsoft Management Console (MMC).
- Utilizes Microsoft Windows Management Instrumentation (WMI) protocol for system administration.
- Asset Management of client monitors with IBM Tivoli Configuration Manager.
- Protects system security by configuring the monitors to work only on your network.

System Configuration Example











Screen Administrator™

		Server Software	Client Software
SYSTEM REQUIREMENTS	CPU	Intel Pentium (or compatible) 300 MHz minimum	Intel Pentium (or compatible) 300 MHz minimum
	Memory	128 MB or larger	128 MB or larger
	HDD	10 MB of free space minimum	10 MB of free space minimum
	OS	Microsoft® Windows® 2000 Server Microsoft Windows 2000 Professional Microsoft Windows Server 2003 Microsoft Windows XP Professional	Microsoft Windows 2000 Professional Microsoft Windows XP Professional
	Network	TCP/IP protocol	TCP/IP protocol
	Supported Models	S2410W, S2110W, L997, L887, L797, S1910, L788, L768, L568, L367	

A USB port is required on the host server for connecting the supplied USB hardware key to use Screen Administrator. A USB port is required on the client PC side to connect the client PC and client monitor.

ACCESSORIES REFERENCE

		Model Names																						
		Model Names	S2410W	S2110W	L997	L887	L797	S1910	L788	L768	L568	L778	L578	M1700	L367	P1700	L760T-C	L560T-C	L363T-C	L362T	L353T-C	L352T-C		
Flexible Arms		LA-131-D		•	•	•	•	•	•	•		•		•										
		LA-130-D							•	•	•	•	•	•	•	•	•							
		LA-120-D							•	•	•	•	•	•	•	•	•	•						
		LA-121-DA							•	•	•	•	•	•	•	•	•	•						
		LA-121-DD							•	•	•	•	•	•	•	•	•							
Wall Mount Arms		LA-030-W		•	•	•	•	•	•	•		•		•										
		LA-011-W		•	•	•	•	•	•	•			•		•									
		LA-010-W							•	•	•	•	•	•	•	•	•	•						
Dual Height Adjustable Stands		LS-HM1-D			•	•	•	•	•	•	•		•	•										
		LS-HM0-D										•			•	•	•							
Height Adjustable Stands		LS-H71-D						•	•	•														
		LS-H63-D		•			•						•											
		LS-H52-D									•			•										
		LS-H51-D													•									
		LS-H32-D																•						
		LS-H33-D																•						
		LS-A70-D							•	•	•													
LS-A50-D										•		•												
Panel Protectors		FP-2400W	•																					
		FP-2100W		•																				
		FP-901			•																			
		FP-801				•																		
		FP-702						•	•	•	•		•											
		FP-505										•		•	•			•						
		FP-301															•							
Touch Panel Pointer		TP1															•	•	•	•	•	•		
Client Management Software		Screen Administrator	•	•	•	•	•	•	•	•	•				•									

EIZO Eco Products — Meeting and Exceeding the World’s Highest Standards



Products carrying the EIZO Eco Products 2002 or 2004 labels fulfill an internally established set of eco-friendly guidelines concerning all facets of the product lifecycle. This label is a Type II environmental label compliant with the internationally recognized ISO 14021 standard. Products marked with this label satisfy the environmental requirements of several of the world’s leading third party standards: TCO’03/TCO’99, EPA Energy Star Program, PC Green Label, and the Eco Mark, along with the following additional criteria set by EIZO:

- 1) Power consumption less than 1 watt when turned off.
- 2) Partial use of lead-free solder.
- 3) Partial use of chrome-free steel plates.
- 4) User’s manual made with chlorine-free, recycled paper.
- 5) Subject to an internal product environmental assessment.

EIZO Eco Products 2004 satisfies further criteria:

- 6) Partial use of recycled plastic.
- 7) Power consumption less than two watts in power save mode.
- 8) External (supplied) cables contain lead-free wires.
- 9) Partial use of soy ink with supplied printed materials.

Products meeting the above criteria are distinguished by this label, which appears on the product brochure, web site, packaging, and user’s manual.

The EIZO Eco Products 2002 and 2004 labels encompass the environmental requirements of the following international standards.



TCO’03/’99

Established by the Swedish Confederation of Professional Employees, TCO’03/’99 set standards for office equipment in such areas as safety, visual ergonomics, energy consumption, electric and magnetic field emissions, and recycling.



EPA Energy Star

A program developed by the American Environmental Protection Agency to promote a voluntary partnership with manufacturers of office equipment to save energy and protect the environment.



PC Green Label

A label issued by the Japan Electronics and Information Technology Industries Association indicating adherence to environmental issues such as the 3R’s — Reduce, Reuse, and Recycle, from the corporate structure to product design and manufacture.



Eco Mark

The Japan Environmental Association’s label for household and office goods. This was the first environmental standard in Japan to cover information processing devices (personal computers).

RoHS and WEEE — Directives for More Environmentally Friendly Products

The need to reduce hazardous materials and increase recycling in electrical and electronic equipment to protect human health and the environment has prompted the European Union to issue two directives.

The first directive is the restriction of the use of certain hazardous substances in electrical and electronic equipment (RoHS). The six restricted substances are lead, mercury, cadmium, hexavalent chromium, PBDE (polybrominated diphenylethers), and PBB (polybrominated biphenyls). RoHS is scheduled to take effect from July 2006 and will apply to most electrical and electronic equipment manufactured and imported into the EU. Beginning in September 2005, EIZO is phasing in compliance with RoHS in its manufacturing. By March 2006, all monitors and accessories in this brochure are scheduled for RoHS compliance, three months ahead of the EU’s required date.

The second directive is Waste Electrical and Electronic Equipment (WEEE). This directive requires producers of such equipment to provide for free collection and achieve recovery and reuse and recycling targets of 75% and 65% respectively. WEEE went into effect in August 2005. All products in this brochure manufactured since June 2005 comply with WEEE.

Industry-Leading Five-Year Warranty



EIZO stands behind the craftsmanship of its products with the industry’s only manufacturer-side five-year warranty. This warranty is offered by EIZO and its authorized distributors for all monitors in this brochure 17" and over (excluding touch panel monitors).

The warranty period of the LCD panel and backlight is limited to three years and the total usage time to 30,000 hours from the date of purchase. For other FlexScan LCD monitors, EIZO and its authorized distributors offer a three-year warranty.

© 2005 Eizo Nanao Corporation.

All product names and logos are trademarks or registered trademarks of their respective companies. PowerManager, Screen Administrator, SlimEdge, MultiEdge, and PrimEdge are trademarks, and ScreenManager, FlexScan, and EIZO are registered trademarks of Eizo Nanao Corporation.

Specifications are subject to change without notice.

Published on chlorine-free paper.

(040906d) Printed in Japan, 9, 2005, 3K

EIZO NANAO CORPORATION

153 Shimokashiwano, Hakusan, Ishikawa 924-8566 Japan

Phone +81-76-277-6792 Fax: +81-76-277-6793

www.eizo.com

