

## Accepted Manuscript

Phylogeny of Tetillidae (Porifera, Demospongiae, Spirophorida) based on three molecular markers

Amir Szitenberg, Leontine E. Becking, Sergio Vargas, Júlio C.C. Fernandez, Nadiezhda Santodomingo, Gert Wörheide, Micha Ilan, Michelle Kelly, Dorothée Huchon

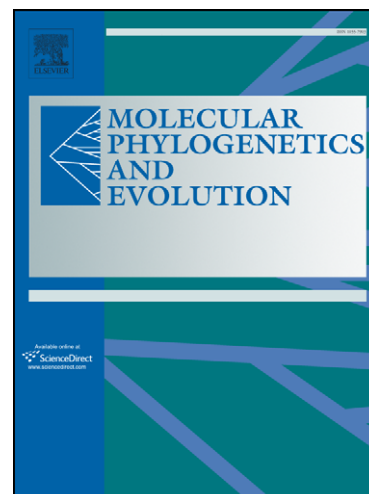
PII: S1055-7903(13)00075-4  
DOI: <http://dx.doi.org/10.1016/j.ympev.2013.02.018>  
Reference: YMPEV 4517

To appear in: *Molecular Phylogenetics and Evolution*

Received Date: 21 June 2012  
Revised Date: 29 December 2012  
Accepted Date: 15 February 2013

Please cite this article as: Szitenberg, A., Becking, L.E., Vargas, S., Fernandez, J.C.C., Santodomingo, N., Wörheide, G., Ilan, M., Kelly, M., Huchon, D., Phylogeny of Tetillidae (Porifera, Demospongiae, Spirophorida) based on three molecular markers, *Molecular Phylogenetics and Evolution* (2013), doi: <http://dx.doi.org/10.1016/j.ympev.2013.02.018>

This is a PDF file of an unedited manuscript that has been accepted for publication. As a service to our customers we are providing this early version of the manuscript. The manuscript will undergo copyediting, typesetting, and review of the resulting proof before it is published in its final form. Please note that during the production process errors may be discovered which could affect the content, and all legal disclaimers that apply to the journal pertain.



# Phylogeny of Tetillidae (Porifera, Demospongiae, Spirophorida) based on three molecular markers

Amir Szitenberg<sup>a</sup>, Leontine E. Becking<sup>b</sup>, Sergio Vargas<sup>c</sup>, Júlio C. C. Fernandez<sup>d</sup>, Nadiezhda Santodomingo<sup>b,e</sup>, Gert Wörheide<sup>c,f</sup>, Micha Ilan<sup>a</sup>, Michelle Kelly<sup>g</sup>, Dorothee Huchon<sup>a\*</sup>

<sup>a</sup> Department of Zoology, George S. Wise Faculty of Life Sciences, Tel-Aviv University, Tel-Aviv 69978, Israel.

<sup>b</sup> Netherlands Centre for Biodiversity Naturalis, P.O. Box 9517, 2300 RA Leiden, The Netherlands.

<sup>c</sup> Department of Earth- and Environmental Sciences & GeoBio-Center<sup>LMU</sup>, Ludwig-Maximilians-Universität München, Richard-Wagner Str. 10, D-80333 München, Germany.

<sup>d</sup> Departamento de Invertebrates, Museu Nacional, Universidade Federal do Rio de Janeiro – Quinta da Boa Vista, s/n, 20940-040, Rio de Janeiro/RJ, Brazil.

<sup>e</sup> Department of Earth Sciences. Natural History Museum. Cromwell Road. SW7 5BD, London, United Kingdom.

<sup>f</sup> Bavarian State Collections of Palaeontology and Geology, Richard-Wagner Str. 10, D-80333 München, Germany.

<sup>g</sup> National Institute of Water & Atmospheric Research Ltd, Private Bag 99940, Auckland 1149, New Zealand.

\* Corresponding author. Fax: +972 3 640 9817.

E-mail address: huchond@post.tau.ac.il (D. Huchon).

**Abstract:**

Tetillidae are spherical to elliptical cosmopolitan demosponges. The family comprises eight genera: namely, *Acanthotetilla* Burton, 1959, *Amphitethya* Lendenfeld, 1907, *Cinachyra* Sollas, 1886, *Cinachyrella* Wilson, 1925, *Craniella* Schmidt, 1870, *Fangophilina* Schmidt, 1880, *Paratetilla* Dendy, 1905, and *Tetilla* Schmidt, 1868. These genera are characterized by few conflicting morphological characters, resulting in an ambiguity of phylogenetic relationships. The phylogeny of tetillid genera was investigated using the *cox1*, 18S rRNA and 28S rRNA (C1-D2 domains) genes in 88 specimens (8 genera, 28 species). Five clades were identified: (i) *Cinachyrella*, *Paratetilla* and *Amphitethya* species, (ii) *Cinachyrella levantinensis*, (iii) *Tetilla*, (iv) *Craniella*, *Cinachyra* and *Fangophilina* and (v) *Acanthotetilla*. Consequently, the phylogenetic analysis supports the monophyly of *Tetilla*, a genus lacking any known morphological synapomorphy. *Acanthotetilla* is also recovered. In contrast, within the first clade, species of the genera *Paratetilla* and *Amphitethya* were nested within *Cinachyrella*. Similarly, within the fourth clade, species of the genera *Cinachyra* and *Fangophilina* were nested within *Craniella*. As previously postulated by taxonomists, the loss of ectodermal specialization (i.e., a cortex) has occurred several times independently. Nevertheless, the presence or absence of a cortex and its features carry a phylogenetic signal. Surprisingly, the common view that assumes close relationships among sponges with porocalices (i.e., surface depressions) is refuted.

**Key words:** *cox1*; 18S rRNA; 28S rRNA; Tetillidae; morphology; phylogenetics; taxonomy.

## 1. Introduction

Tetillidae is a family of mostly spherical to elliptical spirophorid demosponges. Due to their spherical shape and the circular depressions that often appear on their surface (porocalices) they are frequently referred to as "golf ball sponges" and "moon sponges". Tetillidae are distributed worldwide and across a wide range of depths (van Soest et al., 2012; van Soest and Rützler, 2002). They have been found to be a source of secondary metabolites with potential medical applications (Aiello et al., 1991; Atta et al., 1986; Cardellina et al., 1983; McClintock and Gauthier, 1992).

Tetillid sponges are characterized by a spherical, spiraling growth form, the presence of specialized pits called porocalices that contain the inhalant ostia and occasionally exhalant orifices, and the possession of unique contorted and microspined sigmaspires. Sigmaspires are a synapomorphy of the order Spirophorida that contains Tetillidae. However, not all members of the family possess these diagnostic tetillid characteristics. For instance, the genus *Tetilla*, after which the family is named, does not possess porocalices, and *T. euplocamos* Schmidt, 1868, the type species of the genus, also lacks sigmaspires (Rützler, 1987).

Tetillid taxonomy fluctuated greatly both prior to and following the establishment of Tetillidae by Sollas (1886). Stability was achieved by Rützler (1987), who revealed the ambiguity of certain diagnostic characters and defined more reliable ones (Table 1).

Today, Tetillidae comprise eight genera: *Acanthotetilla* Burton, 1959, *Amphitethya* Lendenfeld, 1907, *Cinachyra* Sollas, 1886, *Cinachyrella* Wilson, 1925, *Craniella* Schmidt, 1870, *Fangophilina* Schmidt, 1880, *Paratetilla* Dendy, 1905, and *Tetilla* Schmidt, 1868 (van Soest and Rützler, 2002). The family is perceived as having few

diagnostic taxonomic characters that can be applied in order to clearly differentiate genera. In addition, some characters are difficult to recognize consistently. The first character used for identification is the presence or absence of porocalices, although several porocalyx morphologies exist. Another important character used is the presence or absence of a protein cortex reinforced by special cortical spicule types. Finally, the presence or absence of specific megasclere types (i.e., acanthoxea, amphiclads and calthrops-like triaenes) is also used (Table 1) (van Soest and Rützler, 2002).

Rützler (1987) argued that the presence of a protein cortex in tetillids is an inappropriate taxonomic character, since it can be easily overlooked. Instead, he considered the spicular reinforcement of the cortex as the true stable marker. Species identified or revisited, considering Rützler's guidelines, have remained stable regarding their generic affiliation. The morphological characteristics of each of the eight genera are described in Table 1 and in Supplementary file 1 as stated in van Soest and Rützler (2002).

Insert Inline Supplementary file 1 here

It should be noted that the presence of porocalices and the presence of a spiculated cortex would conflict in a phylogenetic analysis. Indeed, the presence of a cortex spiculated with minute oxeads is a characteristic shared by *Craniella* and *Cinachyra* while porocalices are found in *Acanthotetilla*, *Cinachyra*, *Cinachyrella*, *Paratetilla* and *Fangophilina*, but not in *Craniella*. In terms of phylogeny, the presence of porocalices is viewed as a more informative character than the presence of a spiculated cortex (van

Soest and Rützler, 2002). Consequently, *Acanthotetilla*, *Cinachyrella*, *Paratetilla*, *Cinachyra* and *Fangophilina* are considered to be closely related genera, although shape differences have been noted between porocalices of different genera (e.g., flask-shape versus hemispherical). Based on the shared presence of porocalices, it has been suggested that *Fangophilina* might be a junior synonym of *Cinachyrella* (Supplementary file 1; van Soest and Rützler, 2002). The only molecular study that includes more than ten different tetillid species suggests that some tetillid genera need to be revised (Szitenberg et al., 2010). Specifically, a *Paratetilla* species was found to be nested among *Cinachyrella* representatives.

The goals of this study were thus two fold: 1) to determine the phylogenetic relationships among tetillid genera; and 2) to evaluate the importance of the porocalices and spiculated cortex as phylogenetic markers. We employed three molecular markers (the *cox1*, 18S rRNA and the 28S rRNA genes) and representatives of 28 species in order to reconstruct a reliable phylogeny of Tetillidae (Table 2, Table S1).

## 2. Material and Methods

### 2.1. Taxon sampling, DNA extraction, amplification and sequencing

A total of 88 tetillid specimens were included in this study, comprising two *Acanthotetilla* species, one *Amphitethya*, two *Cinachyra*, nine *Cinachyrella*, eight *Craniella*, one *Fangophilina*, one *Paratetilla* and four *Tetilla* species (Table 2). Genomic DNA was extracted from ethanol-preserved tissue samples following the procedure of Fulton et al. (1995). In many cases, the DNA obtained was found to be degraded and therefore PCR products were difficult to obtain. The *cox1* gene was the first marker we

attempted to amplify since it is used as a DNA barcoding and phylogenetic marker in sponges (e.g., Cárdenas et al., 2009; Erpenbeck et al., 2007; Erpenbeck et al., 2006; Morrow et al., 2012; Poeppe et al., 2010; Redmond et al., 2010; Solé-Cava and Wörheide, 2007) and previous work on Tetillidae had been done using this marker (Szitenberg et al., 2010). The *cox1* gene was sequenced for 56 specimens. For 28 degraded samples only a small fragment of the *cox1* gene, smaller than 600 bp, could be obtained (Table 2). Twenty-three primer pairs were used to amplify between one to five overlapping fragments of varying lengths of the *cox1* gene for each species (Table S2). The fragments were obtained after several reamplifications, conducting nested or semi-nested PCRs. Up to three reamplifications were performed to obtain each fragment. The sequencing of the *cox1* gene yielded contigs of 462 to 1215 bp in length (Table 2).

Preliminary results showed that the 18S rRNA gene was less informative than the *cox1* gene, at both the species and genus level (see Results section). Given the great difficulty in amplifying most of the museum samples we received, the 18S rRNA gene was sequenced for only 28 samples representative of five tetillid genera. The 18S rRNA gene was first amplified using the 18S1 forward primer (Borchiellini et al., 2004) and the 18S2 - mod reverse (modified from Borchiellini et al., 2004; Table S2). Each PCR product then was reamplified once or twice using diverse nested primers (Table S2). The length of the amplicons ranged from 800 to 1722 bp (Table 2).

In order to complement the phylogenetic signal obtained with the *cox1* and the 18S rRNA genes, the variable C1-D2 region of the 28S rRNA gene was amplified for 41 samples which had reasonable DNA quality (Table 2). Semi-nested PCRs were also conducted to amplify the C1-D2 fragment of the 28S rRNA gene, using the C'1 - mod

forward primer (modified from Chombard et al., 1998; Table S2) and the D2 reverse primer (Chombard et al., 1998) in the first reaction, and the ITS4F forward primer (modified from Chombard et al., 1998; Table S2) and the D2 reverse primer in the first reamplification. A second reamplification of the PCR product was often required, in which the SN47F - mod forward primer (modified from Kober and Nichols, 2007; Table S2) and the D2 reverse primer were used. This procedure yielded 760 to 820 bp long fragments. In cases in which this approach failed, the amplification of a shorter fragment was attempted. In this case the first amplification was conducted using the C'1 - mod forward primer and the 28S-tetR1 reverse primer (Table S2). The first nested reamplification was conducted with ITS4F forward primer and 28S-tetR2 reverse primer (Table S2). Finally the second nested reamplification was conducted with SN47F - mod forward primer and 28S-tetR2 reverse primer. This procedure yielded 450 to 670 bp long fragments (Table 2).

Most PCR products were directly sequenced using Big Dye Terminator v1.1 (Applied Biosystems) on an ABI 310 sequencer. In a few cases, sequencing revealed more than one sequence. In such cases PCR products were ligated into the pSC-A vector. Ligation products were then transformed into StrataClone™ SoloPack® competent cells (Stratagene). At least three clones per species were sequenced. Both strands of all genes were sequenced. The 125 newly obtained sequences were submitted to GenBank under accession numbers JX177863 to JX177987 (Table 2).



## 2.2 Phylogenetic analyses

### 2.2.1 Datasets

Phylogenetic trees were reconstructed from four datasets, one for each marker separately and a combined dataset. In each analysis, Astrophorida species were used as outgroup since this family has been established to be the sister clade of Spirophorida (e.g., Borchiellini et al., 2004; Nichols, 2005). The *cox1* gene dataset comprises 81 tetillid sequences and six astrophorid sequences. The 28S rRNA gene dataset comprises 41 tetillid sequences and four astrophorid sequences. The 18S rRNA gene dataset comprises 28 tetillid sequences and two astrophorid sequences. The combined dataset comprises 53 specimens, for which the *cox1* gene and at least one of the two rRNA genes were sequenced (Table 2). The datasets are available in Supplementary file 2 and in the Dryad repository database doi: 10.5061/dryad.10gh5.

### 2.2.2 Multiple alignments

The *cox1* gene dataset was aligned twice, once with the L-ins-i algorithm implemented in Mafft 6 (Katoh et al., 2005; Katoh and Toh, 2008) and once with the online version of MUSCLE (Edgar, 2004a, b) with default options (we verified manually that no frame shift was introduced in the alignment). The two alignments were compared with SOAP 1.2a4 (Loytynoja and Milinkovitch, 2001). All positions were found to be identically aligned in the two alignments. Following Szitenberg et al. (2010), in order to exclude potential co-conversion tracts which originated from the insertion of self-splicing introns (some tetillid species possess group I introns in their *cox1* sequence), the 18 nucleotides located downstream to each known intron insertion site were removed from

the alignment. In addition, positions with a proportion of missing data higher than 0.4 were also removed.

The two rRNA genes datasets were aligned according to the consensus secondary structures derived from Voigt et al. (2008) and from Morrow et al. (2012) for the 18S rRNA gene and the 28S rRNA gene, respectively. Specifically, preliminary 18S rRNA and 28S rRNA alignments were performed including the tetillid sequences and sequences from the datasets of Voigt et al. (2008) and of Morrow et al. (2012). The sequence of *Tetilla japonica* (GenBank accession number D15067) was used to align the 18S rRNA dataset with the consensus structure scheme. Since there are no tetractinellid sequences in the Morrow et al. (2012) dataset, the sequence of *Axinella damicornis* (GenBank accession number HQ379198, one of the most complete G4 sequences) was used to align the 28S rRNA dataset with the consensus structure scheme. For both genes the tetillid alignments fitted the structure scheme without any need for manual correction (i.e., the tetillid sequences did not include additional stems or loops). Positions with a proportion of missing data higher than 0.4 were also excluded from the rRNA genes datasets, unless participating in a stem structure.

### 2.2.3 Phylogenetic reconstruction

For all datasets, phylogenetic reconstructions were performed using the maximum likelihood (ML) criterion and the Bayesian framework. ML analyses were all performed with RAxML 7.2.6 (Stamatakis, 2006) while Bayesian analyses were either conducted with MrBayes 3.2 (Ronquist and Huelsenbeck, 2003) for the *cox1* gene dataset, or with

PHASE 2 ([www.bioinf.manchester.ac.uk/resources/phase/index.html](http://www.bioinf.manchester.ac.uk/resources/phase/index.html)) for the combined dataset and the rRNA datasets.

To facilitate comparison between analyses, the same substitution models were chosen in the Bayesian and in the ML analyses. The *coxI* gene was partitioned according to codon positions. The rRNA genes were partitioned into stem and loop partitions. For the *coxI* partitions and the loop partitions of the rRNA genes, tree searches were conducted under the GTR+ $\Gamma$  model as recommended in the RAxML manual. For the stem partitions of the 18S rRNA and 28S rRNA genes, the best fitting secondary structure constrained substitution models were selected with the program Optimizer of the PHASE 2 package ([www.bioinf.manchester.ac.uk/resources/phase/index.html](http://www.bioinf.manchester.ac.uk/resources/phase/index.html)) following Tsagkogeorga et al. (2009). For the stem partitions of both rRNA genes, the RNA6D doublet-substitution matrix was identified as best-fitting. Since RAxML allows only a single stem partition per analysis, in the combined ML analysis the stem partitions of the two rRNA datasets were considered as a single partition evolving under the RNA6D+ $\Gamma$  model. In the Bayesian analysis of the combined dataset the two stem partitions were analyzed separately (each one under the RNA6D+ $\Gamma$  model).

RAxML tree reconstructions were carried out using 100 random starting trees. Branch support was computed based on 1,000 bootstrap replications. In the MrBayes analysis (*coxI* bayesian analysis), two runs with eight chains each were conducted, with default temperatures and prior distributions. The chains were sampled every 100 generations. Model parameters were allowed to be optimized independently for each codon position partition. Convergence was achieved at 600,000 generations when standard deviation of split frequencies reached 0.009. After convergence, the sampling

continued until the analysis reached 3,000,000 generations. The first 600,000 generations, amounting to 20% of the total number of generations, were discarded as burnin. In PHASE (combined and rRNA analysis), 15,000,000 iterations were conducted, out of which every 100<sup>th</sup> tree was sampled. Convergence of the parameters was assessed with the program Tracer v1.4 ([www.http://tree.bio.ed.ac.uk/software/tracer/](http://tree.bio.ed.ac.uk/software/tracer/)). The first 20% of the trees were discarded as burnin. To further confirm convergence, computations were run twice, specifying a different random seed in each MCMC run. In all cases, similar results were obtained for the two independent runs (only the results of the first run are presented).

### 2.2.3 Testing alternative tree hypotheses

An AU (Approximate Unbiased) test was performed to compare the *cox1* and combined RAxML trees to seven or five alternative topologies respectively, each presenting the monophyly of one lineage that was not recovered in the unconstrained phylogenetic reconstructions (i.e., 1- the genus *Cinachyrella* monophyly, 2- the genus *Craniella* monophyly, 3- *Paratetilla bacca* monophyly, 4- *Cinachyrella australiensis* monophyly, 5- *Cinachyrella kuekenthali* monophyly, 6- *Cinachyrella alloclada* monophyly, 7- *Cinachyrella antarctica* monophyly). The alternative topologies were reconstructed using constrained ML searches. Specifically, for each lineage tested an ML tree, which constrained the monophyly of the corresponding lineage, was built using RAxML 7.2.6 (Stamatakis, 2006), under the models and parameters indicated above. A separate set of constrained trees was built from each of the *cox1* and combined datasets. The resulting constrained trees were compared with the unconstrained ML tree using

CONSEL V0.1i (Shimodaira and Hasegawa, 2001) with 100,000 bootstrap replicates and RELL optimization. Other parameters were set to default values. The null hypothesis in the AU test is that the enforced relationships are as likely as the observed ones.

### 2.3 Evolution of morphological characters

The ancestral states of four morphological characters were reconstructed by calculating their proportional likelihoods ( $P_L$ ). The characters were the presence or absence of: 1- porocalices; 2- proteinous subectosomal layer; 3- subectodermal smooth minute oxeas; 4- acanthose monoaxonic megascleres; 5- calthrops-like short shafted triaenes (Table S3). The presence of amphiclad spicules, which is a character found exclusively in *Amphitethya*, could not be included in our analysis since this genus was represented by a single specimen. Following Cárdenas et al. (2011), the  $P_L$  of each ancestral character state was computed with Mesquite (Maddison and Maddison, 2006; Maddison and Maddison, 2011) using the phylogenetic relationships of the *cox1* tree (in this analysis each species was represented by a single terminal taxon) and the default Mk1 evolutionary model for categorical characters (Lewis, 2001).

## 3. Results

### 3.1. Molecular phylogeny

#### 3.1.1 Comparison of molecular markers

In this study, we sequenced three different markers, the *cox1*, 18S rRNA and 28S rRNA genes, in order to resolve tetillid phylogeny. The performance of the three markers varied considerably. The 18S rRNA gene marker provided little phylogenetic signal (Fig.

S1), which resulted in lower resolution, shorter branch lengths and lower node supports than those obtained with the *cox1* (Fig. 2) and 28S rRNA (Fig. S2) genes. A quick visual comparison of Figures S1, 2 and S2 is sufficient to make these differences evident. However, it is worth noting that the addition of the 18S rRNA gene in the combined dataset considerably improved the support of several nodes (Fig. 1). In agreement with Cárdenas et al. (2010), we noticed that the C1-D2 region of the 28S rRNA gene evolves faster than the *cox1* gene (Fig. S3). However, the *cox1* gene provides a better phylogenetic signal for several nodes. For example, the relationships between *P. bacca* and *C. schulzei* are better resolved with the *cox1* gene. The two most informative analyses are thus those of the combined dataset (Fig. 1) and of the *cox1* gene (Fig. 2). The combined analysis resolves the relationships among the major tetillid clades with high support, while the large taxonomic sampling of the *cox1* analysis allows evaluation of the monophyly of several species. We here only discuss the results of these two analyses.

### 3.1.2 Major tetillid clades

In the combined tree (Fig. 1), five well supported clades emerge. Clade I comprises *Cinachyrella* species, *Paratetilla* and *Amphitethya* (Posterior Probability, PP = 1; Bootstrap Percentage, BP = 100). *Paratetilla bacca* was paraphyletic as it contained *C. schulzei* (PP = 1, BP = 100). Clade II comprises *Cinachyrella levantinensis* (PP = 1, BP = 100) and it is sister to clade I (PP = 1, BP = 92). Clade III comprises the three *Tetilla* species (PP = 1; BP = 100). Clade IV encompasses all species from the genera *Craniella*, *Cinachyra* and *Fangophilina* (PP = 1; BP = 100). This clade comprises two distant sister subclades. The first subclade includes *Craniella zetlandica*, *Craniella cranium* and

*Craniella* sp. 3318 (PP = 1; BP = 100). The second subclade includes all other *Craniella*, *Cinachyra* and *Fangophilina* species considered (PP = 1; BP = 100). Within this subclade, *Cinachyra* species cluster together (PP = 1; BP = 100). Clade IV is sister to Clade III (*Tetilla*) with high support (PP = 1; BP = 98). Clade V is the first to diverge among the tetillid clades (PP = 0.97; BP = 72) and includes the *Acanthotetilla* species (PP = 1; BP = 100). The five clades that emerge in the combined analysis are also recovered by the analysis of the *cox1* dataset, but with lower support (Fig. 2).

### 3.1.3 Phylogenetic hypotheses testing

The large species sampling of the *cox1* gene allowed us to test the monophyly of lineages that are recovered as paraphyletic (Table 3). At the genus level the AU test rejected the monophyly of *Cinachyrella* and *Craniella* ( $p$ -value < 0.001 for both nodes in both the *cox1* and combined analyses). At the species level, the AU test could not reject the monophyly of *Cinachyrella kuekenthali*, *Cinachyrella alloclada*, *Cinachyra antarctica* and *Paratetilla bacca* which appear paraphyletic in the ML *cox1* and combined trees ( $p$ -value > 0.05 for all four nodes in both the *cox1* and combined analyses). However, the monophyly of *Cinachyrella australiensis* was clearly rejected ( $p$ -value < 0.001 in both analyses). *C. australiensis* is polyphyletic and is represented by five distinct lineages. Interestingly, the different clades do not correspond to different geographical areas. All other species were found to be monophyletic.

### 3.2. The evolution of morphological characters

#### 3.2.1 Porocalices

Both the presence and absence of porocalices were equally likely in the ancestor of Tetillidae ( $P_L = 0.6$  for presence, and thus  $P_L = 0.4$  for absence). Therefore, the analysis does not allow us to determine whether porocalices are symplesiomorphic in tetillids. The presence of porocalices was found to be slightly more likely than their absence in the ancestor of all *Cinachyrella* species (clades I + II,  $P_L = 0.8$  for presence), and an almost certain presence in the common ancestors of clades V (*Acanthotetilla*;  $P_L = 0.99$ ), I and II ( $P_L = 0.98$  and  $P_L = 1$  respectively). In the ancestors of clades III and IV, the absence of porocalices was found to be the most likely ( $P_L = 0.97$ , for absence in both clades), suggesting that the porocalices found in clade IV (in *Cinachyra* and *Fangophilina*) evolved independently from those found in clade I (in *Cinachyrella* and *Paratetilla*), clade II (*Cinachyrella levantinensis*) and clade V (*Acanthotetilla*).

#### 3.2.2 Subectodermal smooth minute oxeas

Out of the five emerging clades, the presence of a distinct size-class of subdermal smooth oxeas was only found to be likely in the common ancestor of clade IV ( $P_L = 0.72$ ). In the two subclades of clade IV the  $P_L$  was even higher ( $P_L = 0.99$  and  $P_L = 0.87$ ). Accordingly, in the tetillid ancestor the presence of such spicules was found to be unlikely ( $P_L = 0.03$ ). Therefore, the subectodermal smooth minute oxeas are probably a synapomorphy of clade IV.



### 3.2.3 Proteinous subectosomal layer

The presence of a collagenous subdermal layer was inferred to be unlikely in the ancestor of clades V ( $P_L = 0.05$ ) and II (comprising a single species). For all other clades, the presence or absence of this character was equivocal ( $0.39 < P_L$  for presence  $< 0.51$ ). This result reflects the fact that several unrelated lineages possess this character (i.e., *Cinachyrella paterifera* + *C. apion*, *C. alloclada*, *C. kuekenthali*, *P. bacca* + *C. schulzei*, all *Cinachyra* species and all *Craniella* species).

### 3.2.4 Acanthose monoaxons

The presence or absence of acanthose monoaxons in the ancestral tetillid has remained undetermined ( $P_L = 0.49$  for presence and  $P_L = 0.51$  for absence). Consequently, we cannot determine whether acanthose monoaxons are homoplastic or plesiomorphic in Tetillidae. Within Tetillidae, only the ancestors of *Acanthotetilla* (Clade V; megacanthoxea;  $P_L = 0.97$ ) and *Cinachyrella levantinensis* (clade II;  $P_L = 1$ ) were likely to have possessed such spicules. In clade I, the presence of acanthose monoaxons was somewhat unlikely ( $P_L = 0.3$ ) since this clade contains six unrelated lineages possessing acanthose monoaxons. The ancestors of clade III and IV are likely to have lacked this character ( $P_L = 0.03$ ) as do all their known descendants.

### 3.2.5 Calthrops-like triaenes

Calthrops-like triaenes are only found in *Paratetilla* which is represented in our tree by *P. bacca*. The current *cox1* topology suggests that the common ancestor of *P.*

*bacca* and *C. schulzei* was highly likely to possess calthrope-like triaenes ( $P_L = 0.98$ ), although the *C. schulzei* specimens do not seem to possess them.

## 4. Discussion

### 4.1. The evolution of morphological characters

#### 4.1.1 Porocalices

The presence of porocalices is considered to be a phylogenetically informative trait by taxonomists (van Soest and Rützler, 2002). However, in the past, Wilson (1925) assumed a polyphyletic relationship between porocalices bearing Tetillidae, when he allocated *Cinachyrella* to be a subgenus of *Tetilla*, considering the lack of a cortex in both groups as more informative than the presence of porocalices in only one of them. Our analyses show that genera possessing porocalices (i.e., *Acanthotetilla*, *Cinachyrella*, *Cinachyra*, *Fangophilina* and *Paratetilla*) are indeed polyphyletic (Figs. 1 and 2), refuting the current view of this character. Although the proportional likelihood values are inconclusive concerning the presence of porocalices in the tetillid ancestor, it is more likely that the porocalices of *Cinachyra* and *Fangophilina* evolved independently from those of *Cinachyrella* and *Acanthotetilla* than that they were lost independently in several lineages. The fact that different porocalyx shapes have been described (e.g., flask-shaped, hemispherical) supports this view.

It is possible to conceive a scenario in which some underlying developmental mechanism controlling the formation of porocalices is shared among all tetillids. However, the porocalices themselves can neither be considered a synapomorphy of the family nor an indicator of close relationships among genera. Our results suggest that

further studies should investigate, with a larger sampling, whether or not porocalyx shapes are taxonomically informative. For instance, flask-shaped porocalices only occur in *Cinachyra* (clade IV) and hemispherical porocalices occur only in some *Cinachyrella* and *Paratetilla* (clade I) (Table 1). In addition, the deep and narrow porocalices of *Fangophilina* (clade IV) are more similar to the flask-shaped porocalices of *Cinachyra* (also clade IV) than to the hemispherical porocalices of *Cinachyrella* and *Paratetilla* (clade I) (AS personal observation).

#### 4.1.2 Subectodermal smooth minute oxeas

Another morphological character used as a taxonomic marker is the presence of a cortex, composed of a distinct size-class of smooth oxeas (Rützler, 1987). The ancestor of clade IV may have possessed these subdermal small oxeas, as do most of its descendants, since clade IV groups the genera *Craniella* and *Cinachyra* together for the first time. The only clade IV species lacking this character belongs to *Fangophilina*. Since most species included in clade IV (potentially 49 out of 56 according to the WPD) have such spicules, small cortical oxeas can be considered a synapomorphy of clade IV that *Fangophilina* secondarily lost.

#### 4.1.3 Proteinous subectosomal layer

The presence of a proteinous subectosomal layer does not appear to be a phylogenetically informative character. Our analyses confirm the common view that species of *Cinachyrella* possessing a prominent subectodermal collagen layer are not closely related. As stated by Rützler (1987), in addition to being homoplastic, this

character can also be inadvertently overlooked, which complicates its use as a taxonomic marker.

Rützler (1987) reassigned some former *Cinachyra* species to *Cinachyrella* (i.e., *C. alloclada*, *C. apion*, and *C. kuekenthali*). His decision was based on the absence of cortical spicules, disregarding the presence of a proteinous subdermal layer. In agreement with Rützler (1987), these species cluster together with other *Cinachyrella* rather than with *Cinachyra* representatives.

#### 4.1.4 *Acanthose monoaxons*

The earliest diverging tetillid group is *Acanthotetilla*, based on our phylogenetic analysis (Figs. 1 and 2). Sponges of this genus possess megacanthoxeas, which are spined monoaxons. Seven lineages of *Cinachyrella* (i.e., *C. levantinensis*, *C. kuekenthali* and five polyphyletic lineages of *C. australiensis*) also possess spined monoaxons, but of a different size than the megacanthoxeas. *C. levantinensis* is the earliest species to diverge in clade I+II and it is therefore possible that *C. levantinensis* shares this feature with *Acanthotetilla* as a result of the presence of spined monoaxons in the tetillid common ancestor. However, the remaining mentioned lineages are distantly related to *C.*

*levantinensis* and the origin of spined monoaxons in the latter species is less clear.

Unfortunately, the ancestral character states analysis is inconclusive and does not allow us to differentiate homoplasy from plesiomorphy in this case.

#### 4.1.4 *Calthrops-like triaenes*

*Paratetilla* is distinguished from *Cinachyrella* by the presence of a unique spicule among tetillids, called a calthrops-like triaene. Since *P. bacca* was found to be nested within *Cinachyrella*, the presence of calthrops-like triaenes does not appear to justify a distinct genus for the species possessing them. In addition, *P. bacca* form a paraphyletic clade containing *C. schulzei* (Figs. 1 and 2). This suggests that calthrops-like triaenes were lost in the lineage of *C. schulzei*, or that they are rare in our *C. schulzei* specimens and are easily overlooked, thus exemplifying a claim made by Rützler and Smith (1992), saying that perhaps calthrops-like triaenes should not be valued above the species level. However, since the AU test did not reject the monophyly of *P. bacca*, more data are necessary in order to confirm this result. Still, the close relationship among our *C. schulzei* specimens and *P. bacca* is supported by the presence of a different type of spicule, the smooth microxeas, in both of them. This spicule type is not reported to occur in other species included in clade I (LEB and NS pers. obs., Cárdenas et al., 2009).

#### 4.2. *Phylogeny and taxonomy of tetillid genera*

The phylogenetic analysis presented here confirms that several tetillid genera are not valid in their current concept or rank, as suggested by Szitenberg et al. (2010). Phylogenetic definitions of the emerging clades and their implications for tetillid taxonomy are summarized in Supplementary file 3.

#### 4.2.1 Clade I, *Amphitethya*, *Cinachyrella* and *Paratetilla*

Clade I contains all *Amphitethya*, *Cinachyrella* and *Paratetilla* species except *C. levantinensis*. *Amphitethya*, and *Paratetilla* specimens appear nested among *Cinachyrella* species. Based on the Principle of Priority, species of this clade should be synonymized under *Paratetilla*. As a consequence, *Paratetilla* loses its prevalent concept associating it with the presence of calthrope-like triaenes. However, no morphological character could be identified which characterized all members of this proposed *Paratetilla* clade.

Alternatively, a subgeneric structure should be formed within clade I, with the clade of *P. bacca* and *C. schulzei* as a candidate for one subgenus that is characterized by smooth microxeas. Additional sampling from diverse geographic ranges is needed to answer the question of whether or not other subclades of clade I can be justified as constituting subgenera based on geographic distribution or morphology.

Within clade I, the phylogenetic results also conflict with the current taxonomic classification in the case of *C. australiensis*, which is represented by five unrelated lineages. Our results indicate that several cryptic *C. australiensis* exist in sympatry.

#### 4.2.2 Clade II, *Cinachyrella levantinensis*

*Cinachyrella levantinensis* was found to deeply diverge from all the other *Cinachyrella* species examined. In addition, *C. levantinensis* is the only tetillid species known to exist in the Levantine basin of the Mediterranean Sea. Clade II is therefore a candidate to be a new genus.

#### 4.2.3 Clade III, *Tetilla*

Unlike clade I, clade III supports the validity of an existing tetillid genus, *Tetilla*. So far, the justification for this genus has relied on the intuition of taxonomists since no synapomorphy has been identified, except the absence of common tetillid characteristics (van Soest and Rützler, 2002). Indeed, tetillids lacking porocalices, cortex, cortical spicules or auxiliary megascleres, were affiliated to *Tetilla*. The molecular analysis thus supports this intuition, and provides the first positive evidence for the validity of *Tetilla*. However, unrepresented *Tetilla* species may still cluster within other genera.

#### 4.2.4 Clade IV, *Craniella*, *Cinachyra* and *Fangophilina*

Clade IV contains all *Fangophilina*, *Cinachyra* and *Craniella* species. The genus *Fangophilina* Schmidt, 1880, which possesses porocalices, has been considered to be of "dubious nature" (Supplementary file 1) and has been suggested to be a junior synonym of *Cinachyrella* (Rützler, 1987; van Soest and Rützler, 2002). Since *Cinachyrella* species cluster in clades I and II, the position of the *Fangophilina* species within clade IV indicates that this is not the case.

Within clade IV, two well supported subclades emerge. The first subclade includes *Craniella zetlandica*, *C. cranium*, *Craniella* sp. 3318 and *Craniella* sp. Bioice 3659. The second clade includes the remaining *Craniella* species as well as *Fangophilina* and *Cinachyra* which appear to be nested within *Craniella*. *Fangophilina* and *Cinachyra* should therefore be synonymized under *Craniella* either as junior synonyms or as subgenera of *Craniella*. Consequently, the current concept of *Craniella*, which is characterized by the absence of porocalices, is rejected since both *Fangophilina* and

*Cinachyra* possess porocalices. Since most of the species in this clade possess a distinct class of small oxeas reinforcing their subdermal region, this character can be considered to be a synapomorphy of the newly conceptualized *Craniella*.

As for clade I, it would seem that a subgeneric classification will properly reflect the diversity within clade IV and will express the current taxonomic knowledge. A larger species sampling is needed to establish subgenera within the two subclades. Within the second subclade, *Cinachyra* nonetheless appears to be monophyletic and is a candidate to form a subgenus, since it possesses both a characteristic Antarctic geographic range as well as an established synapomorphy, the flask-shaped porocalices.

Most clade III and clade IV species (e.g., *Tetilla* spp., Fernandez et al., 2011; and *C. barbata* as described in van Soest and Rützler, 2002) possess a root system unlike those observed in other clades. What differentiates it from root systems of other groups is the existence of a unique spicule class within the root. Future work should evaluate whether or not this character is a synapomorphy of the clade III + IV. Unfortunately, the literature is not always clear regarding the presence or absence of a root system (e.g., the presence or absence of a root system is not mentioned for *C. barbata* as described in Campos et al., 2007; and *C. zetlandica*, Carter, 1872), and we could not examine this character in most of our specimens, having only a small tissue fragment from each. An assessment of this character should include a thorough morphological revision of several species.



#### 4.2.5 Clade V, *Acanthotetilla*

The earliest tetillid lineage to diverge comprises solely *Acanthotetilla* species, thus supporting the genus validity, and that of its synapomorphy, the megacanthoxea megascleres. This is the only genus containing encrusting (e.g., *A. walteri*; Peixinho et al., 2007), semiglobular (e.g., *A. celebensis*; de Voogd and Van Soest, 2007) as well as irregular species (*A. gorgonosclera*; van Soest, 1977).

## 5. Conclusions

In this study we present the first comprehensive molecular phylogeny of Tetillidae. Tetillidae was considered to be a relatively simple case in sponge taxonomy since it contains a small number of species (only 158 valid species; van Soest et al., 2012) and clear synapomorphies (e.g., porocalices). However, as in many other molecular phylogeny studies of sponges (reviewed in Wörheide et al., 2012), our findings confirm that morphological characters are affected by rampant convergence and are not always good predictors of phylogenetic relationships in sponges. This has been well accepted for the spicule characters within Tetractinellida (Cárdenas et al., 2011). However, our study shows that this is also the case for less common features, such as the porocalices. We divide Tetillidae into five well-supported clades, out of which three lack clear morphological synapomorphies. We believe that the phylogenetic model presented here will provide important information for consideration in taxonomic revision of the family.

## Acknowledgments

This article is dedicated to the memory of Solange Peixinho (died 11 Nov 2010), whose work contributed to the understanding of sponge taxonomy and of Tetillidae in particular. Revital Ben-David-Zaslow and Sigal Shefer provided invaluable help with the collections of the Zoological Museum at Tel Aviv University. We thank the Israeli Ministry of Science Culture & Sport for supporting the National Collections of Natural History at Tel-Aviv University. We would like to thank the following people: Paco Cárdenas, Hans Tore Rapp, John Hooper, Eduardo Hajdu, Thierry Laperousaz, Shirley Sorokin, Jean Vacelet, Nicole de Voogd and Sumait Putchakarn for providing tissue samples of tetillid sponges; Naomi Paz for editing the text, and Tamar Feldstein for her advice at the bench; Christine Morrow and Dirk Erpenbeck for their help with the analysis of the rRNA secondary structures. LEB acknowledges funding by the Netherlands Organisation for Scientific Research (NWO), division Earth and Life Sciences (ALW IPJ-07002; # 817.01.008). SV and GW acknowledge funding by the Alfred P. Sloan Foundation through the Marine Barcode of Life Initiative, as well as John N. A. Hooper and Kathryn Hall, which supported subsampling of the Queensland Museum sponge collection. NIWA specimens were supplied by the NIWA Invertebrate Collection (NIC); we are grateful to Sadie Mills and Kareen Schnabel for their diligent assistance with loans. These specimens were collected as part of the NIWA research programme *Seamounts, their importance to fisheries and marine ecosystems*, funded by the New Zealand Foundation for Research, Science, and Technology (FRST) Technology Contracts CO1X0028, CO1X0204, CO1X0508, *Deep sea vulnerable communities* Contract CO1X0906, and the Oceans 2020 programme (Land Information and New Zealand, Ministry of Fisheries)

Project ZBD2008–50. Collection and identification of NIWA samples was primarily supported by the New Zealand Foundation for Research, Science & Technology Contracts C01X0219 (Biodiversity and Biosecurity) to NIWA. This research was primarily supported by the Israel Science Foundation (grant No.600/06 to D.H). Last but not least, we would like to thanks two anonymous reviewers for their comments.

## References

- Aiello, A., Fattorusso, E., Magno, S., Menna, M., Pansini, M., 1991. Steroids of the marine sponge *Cinachyra tarentina* - isolation of cholest-4-ene-3,6-dione and (24r)-24-ethylcholest-4-ene-3,6-dione. *J. Nat. Prod.* 54, 281-285.
- Atta, A.M., Sousaatta, M.L.B., Barralneto, M., Peixinho, S., 1986. Isolation and characterization of a mitogenic lectin from the sponge *Cinachyra alloclada*. *Braz. J. Med. Biol. Res.* 19, A638.
- Borchiellini, C., Chombard, C., Manuel, M., Alivon, E., Vacelet, J., Boury-Esnault, N., 2004. Molecular phylogeny of Demospongiae: implications for classification and scenarios of character evolution. *Mol. Phylogenet. Evol.* 32, 823-837.
- Campos, M., Mothes, B., Mendes, I.L.V., 2007. Antarctic sponges (Porifera, demospongiae) of the South Shetland Islands and vicinity. Part I. Spirophorida, Astrophorida, Hadromerida, Halichondrida and Haplosclerida. *Rev. Bras. Zool.* 24, 687-708.

- Cardellina, J.H., Graden, C.J., Greer, B.J., Kern, J.R., 1983. 17z-tetracosenyl 1-glycerol ether from the sponges *Cinachyra alloclada* and *Ulosa ruetzleri*. *Lipids* 18, 107-110.
- Cárdenas, P., Menegola, C., Rapp, H.T., Diaz, M.C., 2009. Morphological description and DNA barcodes of shallow-water Tetractinellida (Porifera: Demospongiae) from Bocas del Toro, Panama, with description of a new species. *Zootaxa* 2276, 1-39.
- Cárdenas, P., Rapp, H.T., Schander, C., Tendal, O.S., 2010. Molecular taxonomy and phylogeny of the Geodiidae (Porifera, Demospongiae, Astrophorida) - combining phylogenetic and Linnaean classification. *Zool. Scr.* 39, 89-106.
- Cárdenas, P., Xavier, J.R., Reveillaud, J., Schander, C., Rapp, H.T., 2011. Molecular phylogeny of the Astrophorida (Porifera, Demospongiae<sup>P</sup>) reveals an unexpected high level of spicule homoplasy. *PLoS One* 6, e18318.
- Carter, H.J., 1872. On two new sponges from the Antarctic Sea, and on a new species of *Tethya* from Shetland; together with on the reproduction of sponges commencing from zygosis of the sponge animal. *Ann. Mag. Nat. Hist.* 54, 409-435.
- Chombard, C., Boury-Esnault, N., Tillier, S., 1998. Reassessment of homology of morphological characters in tetractinellid sponges based on molecular data. *Syst. Biol.* 47, 351-366.

- de Voogd, N.J., Van Soest, R.W.M., 2007. *Acanthotetilla celebensis* sp nov., a new species from North Sulawesi, Indonesia (Porifera : Demospongiae : Spirophorida : Tetillidae). *Zootaxa* 1397, 25-28.
- Edgar, R.C., 2004a. MUSCLE: a multiple sequence alignment method with reduced time and space complexity. *BMC Bioinformatics* 5, 1-19.
- Edgar, R.C., 2004b. MUSCLE: multiple sequence alignment with high accuracy and high throughput. *Nucleic Acids Res.* 32, 1792-1797.
- Erpenbeck, D., Duran, S., Rutzler, K., Paul, V., Hooper, J.N.A., Wörheide, G., 2007. Towards a DNA taxonomy of Caribbean demosponges: a gene tree reconstructed from partial mitochondrial CO1 gene sequences supports previous rDNA phylogenies and provides a new perspective on the systematics of Demospongiae. *J. Mar. Biol. Assoc. U.K.* 87, 1563-1570.
- Erpenbeck, D., Hooper, J.N.A., Woeheide, G., 2006. CO1 phylogenies in diploblasts and the 'Barcoding of Life' - are we sequencing a suboptimal partition? *Mol. Ecol. Notes* 6, 550-553.
- Fernandez, J.C.C., Peixinho, S., Pinheiro, U.S., Menegola, C., 2011. Three new species of *Tetilla* Schmidt, 1868 (Tetillidae, Spirophorida, Demospongiae) from Bahia, northeastern Brazil. *Zootaxa*, 2978, 2951-2967.
- Fulton, T., Chunwongse, J., Tanksley, S., 1995. Microprep protocol for extraction of DNA from tomato and other herbaceous plants. *Plant Mol. Biol. Rep.* 13, 207-209.

- Katoh, K., Kuma, K., Toh, H., Miyata, T., 2005. MAFFT version 5: improvement in accuracy of multiple sequence alignment. *Nucleic Acids Res.* 33, 511-518.
- Katoh, K., Toh, H., 2008. Recent developments in the MAFFT multiple sequence alignment program. *Brief. Bioinform.* 9, 286-298.
- Kober, K.M., Nichols, S.A., 2007. On the phylogenetic relationships of hadromerid and poecilosclerid sponges. *J. Mar. Biol. Assoc. U.K.* 87, 1585-1598.
- Lewis, P.O., 2001. A likelihood approach to estimating phylogeny from discrete morphological character data. *Syst. Biol.* 50, 913-925.
- Loytynoja, A., Milinkovitch, M.C., 2001. SOAP, cleaning multiple alignments from unstable blocks. *Bioinformatics* 17, 573-574.
- Maddison, W.P., Maddison, D.R., 2006. StochChar: A package of Mesquite modules for stochastic models of character evolution. Version 1.1.
- Maddison, W.P., Maddison, D.R., 2011. Mesquite: a modular system for evolutionary analysis. Version 2.75
- McClintock, J.B., Gauthier, J.J., 1992. Antimicrobial activities of antarctic sponges. *Antarct. Sci.* 4, 179-183.
- Morrow, C.C., Picton, B.E., Erpenbeck, D., Boury-Esnault, N., Maggs, C.A., Allcock, A.L., 2012. Congruence between nuclear and mitochondrial genes in Demospongiae: a new hypothesis for relationships within the G4 clade (Porifera: Demospongiae). *Mol. Phylogenet. Evol.* 62, 174-190.

- Nichols, S.A., 2005. An evaluation of support for order-level monophyly and interrelationships within the class Demospongiae using partial data from the large subunit rDNA and cytochrome oxidase subunit I. *Mol. Phylogenet. Evol.* 34, 81-96.
- Peixinho, S., Fernandez, J., Oliveira, M.V., Caires, S., Hajdu, E., 2007. Description of two new species of *Acanthotetilla* Burton, 1959 from NE Brazil, Southwestern Atlantic (Tetillidae, Spirophorida, Demospongiae). In: Custodio, M.R., Lobo Hajdu, G., Hajdu, E., Muricy, G. (Eds.), *Porifera Research - Biodiversity, Innovation and Sustainability*, pp. 509-515.
- Poeppe, J., Sutcliffe, P., Hooper, J.N.A., Wörheide, G., Erpenbeck, D., 2010. COI barcoding reveals new clades and radiation patterns of Indo-Pacific sponges of the family Irciniidae (Demospongiae: Dictyoceratida). *PLoS One* 5, e9950.
- Redmond, N.E., Collins, A.G., Diaz, M.C., Thacker, R.W., 2010. Resolving species identities in the Porifera tree of life: a comparison of mitochondrial and nuclear barcodes. *Integr. Comp. Biol.* 50, E144-E144.
- Ronquist, F., Huelsenbeck, J.P., 2003. MrBayes 3: Bayesian phylogenetic inference under mixed models. *Bioinformatics* 19, 1572-1574.
- Rützler, K., 1987. Tetillidae (Spirophorida, Porifera): a taxonomic reevaluation. In: Vacelet, J., Boury-Esnault, N. (Eds.), *Taxonomy of Porifera*. Springer-Verlag, Berlin Heidelberg.

- Rützler, K., Smith, K.P., 1992. Guide to Western Atlantic species of *Cinachyrella* (Porifera; Tetillidae). Proc. Biol. Soc. Wash. 105, 148-164.
- Shimodaira, H., Hasegawa, M., 2001. CONSEL: for assessing the confidence of phylogenetic tree selection. Bioinformatics 17, 1246-1247.
- Solé-Cava, A.M., Wörheide, G., 2007. The perils and merits (or the good, the bad and the ugly) of DNA barcoding of sponges - a controversial discussion. In: Custodio, M.R., Lobo-Hajdu, G., Hajdu, E., Muricy, G. (Eds.), Porifera research: biodiversity, innovation and sustainability. Série Livros 28, Museu Nacional, Rio de Janeiro, pp. 603-612.
- Sollas, W.J., 1886. Preliminary account of the Tetractinellid sponges dredged by H.M.S. 'Challenger' 1872-76. Part I. The Choristida. Sci. Proc. R. Dublin Soc. (new series) 5, 177-199.
- Stamatakis, A., 2006. RAxML-VI-HPC: Maximum likelihood-based phylogenetic analyses with thousands of taxa and mixed models. Bioinformatics 22, 2688-2690.
- Szitenberg, A., Rot, C., Ilan, M., Huchon, D., 2010. Diversity of sponge mitochondrial introns revealed by *cox 1* sequences of Tetillidae. BMC Evol. Biol. 10, 288.
- Tsagkogeorga, G., Turon, X., Hopcroft, R.R., Tilak, M.-K., Feldstein, T., Shenkar, N., Loya, Y., Huchon, D., Douzery, E.J.P., Delsuc, F., 2009. An updated 18S rRNA phylogeny of tunicates based on mixture and secondary structure models. BMC Evol. Biol. 9, 1-16.



- van Soest, R.W.M., 1977. A revision of the megacanthoxea-bearing tetillids (Porifera, Spirophorida), with a description of a new species. In: Hummelinck, P.W., van der Steen, L.J. (Eds.), *Uitgaven van de Natuurwetenschappelijke Studiekring voor Suriname en de Nederlandse Antillen*. No. 89. *Studies on the Fauna of Curaçao and other Caribbean Islands* pp. 1-14.
- van Soest, R.W.M., Boury-Esnault, N., Hooper, J.N.A., Rützler, K., de Voogd, N.J., Alvarez de Glasby, B., Hajdu, E., Pisera, A.B., Manconi, R., Schoenberg, C., Janussen, D., Tabachnick, K.R., Klautau, M., Picton, B., Kelly, M.W., 2012. World Porifera database. Available online at <<http://www.marinespecies.org/porifera>>
- van Soest, R.W.M., Rützler, K., 2002. Family Tetillidae Sollas, 1886. In: Hooper, J.N.A., van Soest, R.W.M. (Eds.), *Systema Porifera: a guide to the classification of sponges*. Kluwer, Plenum, New York, pp. 85-98.
- Voigt, O., Erpenbeck, D., Wörheide, G., 2008. Molecular evolution of rDNA in early diverging Metazoa: first comparative analysis and phylogenetic application of complete SSU rRNA secondary structures in Porifera. *BMC Evol. Biol.* 8, 1-16.
- Wilson, H.V., 1925. Silicious and horny sponges collected by the U.S. Fisheries Steamer 'Albatross' during the Philippine Expedition, 1907-10. *Contributions to the Biology of the Philippine Archipelago and Adjacent Regions*. Bulletin of the United States National Museum, 100(2, part 4).

Wörheide, G., Dohrmann, M., Erpenbeck, D., Larroux, C., Maldonado, M., Voigt, O., Borchellini, C., Lavrov, D.V., 2012. Deep phylogeny and evolution of sponges (Phylum Porifera). *Adv. Mar. Biol.* 61, 1-78.

## Tables

**Table 1.** Morphological characters with taxonomic importance in tetillids. Modified from Rützler (1987) and van Soest and Rützler (2002). + = presence, - = absence.

<b>Genus</b>	<b>Cortex (reinforced by)</b>	<b>Porocalices (shape)</b>	<b>Accessory spicule (type)</b>
<i>Acanthotetilla</i>	+ (megacanthoxeas)	+ (narrow)	+ (megacanthoxeas)
<i>Amphitethya</i>	+ (amphiclads)	-	+ (amphiclads)
<i>Cinachyra</i>	+ (minute smooth oxeads)	+ (flask)	-
<i>Cinachyrella</i>	-	+ (hemi-spherical or narrow)	-
<i>Craniella</i>	+ (minute smooth oxeads)	-	-
<i>Fangophilina</i>	-	+ (narrow)	-
<i>Paratetilla</i>	-	+ (hemi-spherical or narrow)	+ (calthrops-like triaenes)
<i>Tetilla</i>	-	-	-

**Table 2.** Sequences used in the phylogenetic analyses. Accession - GenBank accession numbers. Length: bp length of the analyzed (total) fragment, *coxI* sequence lengths are given excluding the length of mitochondrial introns when present. Specimens included in the combined analysis are shaded. Acronyms: RMNH - Rijksmuseum van Natuurlijke Historie, Leiden, Nederland; UFBA - Universidade Federal da Bahia, Brazil; MNRJ - Museu Nacional do Rio de Janeiro, Brazil; Bioice - The inter-Nordic BIOICE project; VM - Museum of Natural History and Archaeology, a part of the University of Science and Technology, Trondheim, Norway; ZMBN - Zoologisk Museum Bergen Norge; NIWA - National Institute of Water and Atmospheric Research, New Zealand; TAU - Steinhardt National Collection of Natural History, Zoological Museum at Tel Aviv University, Israel; SAM - South Australia Museum; QM - Queensland Museum, Australia; MHNM - Muséum d'histoire naturelle Palais Longchamp, Marseille, France; DH, LB, MI - Lab collections of the authors. Sequences taken from GenBank are marked with an asterisk.

Taxonomy	Tissue number	<i>CoxI</i>		28S rRNA		18S rRNA	
		Accession	Length	Accession	Length	Accession	Length
<b><i>Acanthotetilla</i></b>							
<i>A. celebensis</i>	RMNH POR 2877 (H)	JX177909	622 (746)	JX177921	654 (655)		
<i>A. walteri</i>	UFBA 1897 POR (P)	JX177908	462 (462)				
<i>A. walteri</i>	UFBA 2021 POR (P)	JX177907	622 (771)	JX177922	765 (789)		
<i>A. walteri</i>	UFBA 2028 POR (P)	JX177911	400 (436)				
<b><i>Tetilla</i></b>							
<i>T. radiata</i>	MNRJ 576 (P)	*HM032742	622 (1215)	JX177958	774 (820)		
<i>T. japonica</i>	TAU 25619	JX177901	622 (766)	JX177957	673 (709)	JX177913	615 (654)
<i>T. japonica</i>						*D15067	1598 (1716)
<i>T. pentatriaena</i>	UFBA 3646 POR	JX177899	499 (607)				
<i>T. muricyi</i>	UFBA 2568 POR (H)	JX177898	592 (628)	JX177959	553 (563)		
<b><i>Craniella</i></b>							
<i>Craniella</i> sp.	Bioice 3659	*HM032750	622 (1134)				

<i>C. zetlandica</i>	VM 14754	*HM032751	622 (1110)	JX177961	663 (583)	JX177986	1515 (1516)
<i>C. cranium</i>	ZMBN 85239	*HM592669	622 (658)	JX177960	693 (725)	JX177987	1042 (1108)
<i>Craniella</i> sp 3318	QM G 318758	*HM032752	622 (822)			JX177985	818 (820)
<i>Craniella</i> sp 3878	QM G 316342	*HM032747	622 (984)	JX177956	777 (816)	JX177983	1611 (1718)
<i>Craniella</i> sp 3878	QM G 316372	*HM032748	622 (984)			*HE591469	1602 (1701)
<i>Craniella</i> cf. <i>leptoderma</i>	NIWA 27816			JX177948	518 (520)		
<i>Craniella</i> cf. <i>leptoderma</i>	NIWA 52077	JX177917	622 (1178)	JX177949	658 (669)		
<i>Craniella</i> cf. <i>leptoderma</i>	NIWA 28524	JX177895	616 (729)	JX177946	758 (763)	JX177976	1540 (1541)
<i>Craniella</i> cf. <i>leptoderma</i>	NIWA 28496	JX177897	622 (701)	JX177947	769 (780)		
<i>Craniella</i> cf. <i>leptoderma</i>	NIWA 28507	JX177896	622 (1120)	JX177944	759 (764)	JX177975	1577 (1541)
<i>Craniella</i> cf. <i>leptoderma</i>	QM G 315031	*HM032749	622 (1134)	JX177943	778 (816)	JX177974	1314 (1359)
<i>Craniella</i> cf. <i>leptoderma</i>	NIWA 28910	JX177865	551 (551)			JX177982	1526 (1527)
<i>Craniella</i> cf. <i>leptoderma</i>	NIWA 36097	JX177866	585 (661)	JX177945	770 (780)		
<i>C. sagitta</i>	NIWA 25206	JX177918	622 (727)			JX177981	1520 (1520)
<i>C. sagitta</i>	NIWA 28491	JX177916	618 (776)				
<i>C. sagitta</i>	NIWA 28929	JX177863	586 (612)	JX177952	770 (780)		
<i>C. neocaledoniae</i>	NIWA 28591					JX177984	1540 (1542)
<b><i>Cinachyra</i></b>							
<i>C. antarctica</i>	QM G 311149	JX177915	622 (765)				
<i>C. antarctica</i>	NIWA 28957	JX177867	622 (651)	JX177950	770 (780)		
<i>C. antarctica</i>	NIWA 28951	JX177868	622 (636)				
<i>C. barbata</i>	NIWA 28877	JX177864	584 (611)	JX177951	774 (785)	JX177977	1540 (1542)
<b><i>Fangophilina</i></b>							
<i>Fangophilina</i> sp.	NIWA 28586	JX177920	622 (1190)	JX177954	769 (780)	JX177978	1540 (1541)
<i>Fangophilina</i> sp.	NIWA 28601	JX177919	621 (1190)	JX177955	644 (647)	JX177979	1540 (1541)
<i>Fangophilina</i> sp.	NIWA 28614			JX177953	749 (760)		
<i>Fangophilina</i> sp.	NIWA 28617	JX177912	622 (1192)			JX177980	1540 (1541)
<b><i>Cinachyrella</i></b>							
<i>C. apion</i>	Flatts Inlet	*AJ843895	622 (654)				
<i>C. apion</i>	B25	*EF519601	582 (584)				
<i>C. apion</i>	ZMBN 81785	*FJ711645	622 (673)				
<i>C. apion</i>	ZMBN 1789	*HM592667	622 (658)				
<i>C. kuekenthali</i>	B79	*EF519602	582 (584)				
<i>C. kuekenthali</i>	K75	*EF519603	582 (584)				
<i>C. kuekenthali</i>	ZMBN 81787	*FJ711646	622 (673)				
<i>C. kuekenthali</i>		*NC_010198	622 (1221)				
<i>C. levantinensis</i>	TAU 25456	*AM076987	622 (1206)			*HM629802	1575 (1762)
<i>C. levantinensis</i>	MHNM 16194	JX177905	622 (1180)	JX177942	777 (799)	*HM629803	1574 (1716)
<i>C. levantinensis</i>	MHNM 16194	JX177903	622 (1180)	JX177939	777 (797)		

<i>C. levantinensis</i>	TAU 25568	JX177904	622 (1183)	JX177941	513 (525)	JX177969	1574 (1716)
<i>C. levantinensis</i>	TAU 25529	JX177906	622 (1182)	JX177940	777 (797)	JX177970	1573 (1713)
<i>C. australiensis</i>	QM G 320216	JX177902	622 (752)			JX177966	1554 (1630)
<i>C. australiensis</i>	QM G 321405			JX177931	451 (480)	JX177968	1563 (1657)
<i>C. australiensis</i>	QM G 320656					JX177967	1575 (1716)
<i>C. australiensis</i>	LB 637	JX177869	533 (533)				
<i>C. australiensis</i>	LB 436	JX177883	500 (500)				
<i>C. australiensis</i>	LB 645	JX177878	483 (483)				
<i>C. australiensis</i>	LB 664	JX177873	483 (483)	JX177929	621 (624)		
<i>C. australiensis</i>	LB 662	JX177872	533 (533)				
<i>C. australiensis</i>	LB 424	JX177876	500 (500)				
<i>C. australiensis</i>	LB 91	JX177875	500 (500)				
<i>C. australiensis</i>	LB 425	JX177877	500 (500)				
<i>C. australiensis</i>	LB 80	JX177874	500 (500)				
<i>C. australiensis</i>	LB 647	JX177879	483 (483)	JX177938	509 (515)		
<i>C. australiensis</i>	LB 1223	JX177882	483 (483)				
<i>C. australiensis</i>	LB 817	JX177881	483 (483)	X177933	776 (808)		
<i>C. australiensis</i>	LB 815	JX177880	461 (461)				
<i>C. australiensis</i>	LB 1232	JX177871	533 (533)				
<i>Cinachyrella</i> sp.	TAU 25621	*HM032740	622 (1213)			JX177964	1499 (1499)
<i>Cinachyrella</i> sp.	TAU 25622	*HM032739	622 (1213)			JX177962	1497 (1497)
<i>Cinachyrella</i> sp. 3474	QM G 320270	*HM032741	600 (1076)	X177932	777 (808)	JX177963	1563 (1590)
<i>C. alloclada</i>	TAU 25623	*HM032738	622 (1215)				
<i>C. alloclada</i>	TAU 25617	JX177914	622 (1105)	JX177936	776 (801)	JX177965	1488 (1488)
<i>C. anomala</i>	LB 913	JX177888	483 (483)				
<i>C. anomala</i>	LB 1756	JX177886	500 (500)	JX177934	765 (776)		
<i>C. anomala</i>	LB 1750	JX177887	500 (500)				
<i>C. anomala</i>	LB 45	JX177884	484 (484)	JX177935	513 (514)		
<i>C. anomala</i>	LB 1757	JX177885	500 (500)				
<i>C. schulzei</i>	QM G 320636	*HM032745	(1194)			JX177971	1575 (1719)
<i>C. schulzei</i>	QM G 320143	*HM032746	622 (1185)	JX177923	772 (810)	JX177973	804 (805)
<i>C. paterifera</i>	LB 112	JX177889	440 (440)				
<i>C. paterifera</i>	LB 113	JX177890	622 (440)	JX177937	662 (667)		
<b><i>Amphitethya</i></b>							
<i>Amphitethya</i> cf. <i>microsigma</i>	SAM S1189	JX177910	622 (767)	JX177930	778 (804)		
<b><i>Paratetilla</i></b>							
<i>P. bacca</i>	RMNH POR 3206	JX177892	564 (896)	JX177926	776 (813)		
<i>P. bacca</i>	RMNH POR 3100	JX177891	534 (872)				
<i>P. bacca</i>	TAU 25620	JX177900	622 (964)	JX177927	419 (419)		
<i>P. bacca</i>	QM G 314224	*HM032744	622 (1116)	JX177925	428 (485)		
<i>P. bacca</i>	QM G 306342			JX177928	664 (669)		
<i>P. bacca</i>	LB 622	JX177894	600 (844)				
<i>P. bacca</i>	LB 671	JX177893	597 (840)		653 (672)	JX177972	1553 (1601)

<i>P. bacca</i>	LB 1231	JX177870	536 (536)		
<i>Geodia neptuni</i>		*AY320032	622 (1221)		*AY737635 1617 (1763)
<i>Pachymatisma johnstonia</i>		*EF564339	622 (673)	*HM592832	760 (778)
<i>Geodia barretti</i>		*EU442194	622 (658)		
<i>Calthropella geodioides</i>		*HM592705	622 (658)	*HM592826	770 (813)
<i>Thenia levis</i>		*HM592717	622 (658)	*HM592765	772 (813)
<i>Theonella swinhoei</i>		*HM592745	622 (658)	*HM592820	769 (806)
<i>Geodia cydonium</i>					*AY348878 1606 (1722)

ACCEPTED MANUSCRIPT

**Table 3.** AU test results. The constraint imposed on each topology is specified in the column "Monophyly imposed". The log likelihood of each alternative topology and the corresponding  $p$ -value of the AU test are given for the analysis based on the *cox1* dataset and the combined dataset. NA: The node was represented by one or no specimen in the combined analysis and could not be tested. Clades rejected by the AU test are shaded in gray.

Monophyly imposed	lnL		$\Delta$ lnL		$p$ -value	
	<i>cox1</i>	combined	<i>cox1</i>	combined	<i>cox1</i>	combined
<i>C. antarctica</i>	4112.340603	NA	0	NA	0.822	NA
<i>P. bacca</i>	4114.045420	11462.548849	1.7	4	0.462	0.23
<i>C. alloclada</i>	4114.626566	11462.619122	2.3	4.1	0.203	0.222
<i>C. kuekenthali</i>	4118.711379	NA	6.4	NA	0.136	NA
<i>Craniella</i>	4147.701820	11621.097304	35.4	162.5	0.0001	$2 \times 10^{-68}$
<i>Cinachyrella</i>	4237.370700	11719.729177	125	261.2	$8 \times 10^{-61}$	$10^{-11}$
<i>C. australiensis</i>	4237.721009	11630.388854	125.4	171.8	$10^{-8}$	$6 \times 10^{-6}$

### Figure captions

**Fig. 1.** Bayesian phylogenetic tree reconstructed from a combined dataset of the *cox1* gene and the 18S and 28S rRNA sequences. Circles represent node supports. Solid circles: PP = 1, BP = 100. Dark gray circles:  $0.9 < PP < 1$ ,  $80 < BP < 100$ . Light gray circles:  $0.8 < PP < 0.9$ ,  $60 < BP < 80$ . White circles: a support of either  $PP > 0.9$  or of  $BP > 80$ .

**Fig. 2.** Bayesian phylogenetic tree reconstructed from the *cox1* gene. Circles represent node supports. Black circles: PP = 1, BP = 100. Dark gray circles:  $0.9 < PP < 1$ ,  $80 < BP < 100$ . Light gray circles:  $0.8 < PP < 0.9$ ,  $60 < BP < 80$ . White circles: a support of either  $PP > 0.9$  or of  $BP > 80$ . Species shaded in light gray are paraphyletic. Species shaded in dark gray are polyphyletic. The presence of diagnostic features found to be likely (proportional likelihood  $P_L > 0.85$ ) in the ancestors of major clades is indicated within gray dashed frames at the base of nodes as follows: Circles: porocalices, Diamonds: spined monoaxons, Rectangles: minute ectosomal oxeas, Hexagons: calthrops-like triaenes.



## Supplementary material

**Supplementary file 1.** Tetillidae genera, characteristics and comments.

**Supplementary file 2.** Datasets used in this study, in Nexus format.

**Supplementary file 3.** Phylocode definitions of Tetillidae clades and resulting Linnean taxonomy recommendations.

**Table S1.** The identity and origin of the studied specimens.

**Table S2.** Primers used in this study.

**Table S3.** Morphological matrix used for the ancestral character states analysis.

**Figure S1.** Phylogenetic tree of Tetillidae based on 18S rRNA gene sequences. Posterior probabilities/ Bootstrap values are denoted for each node.

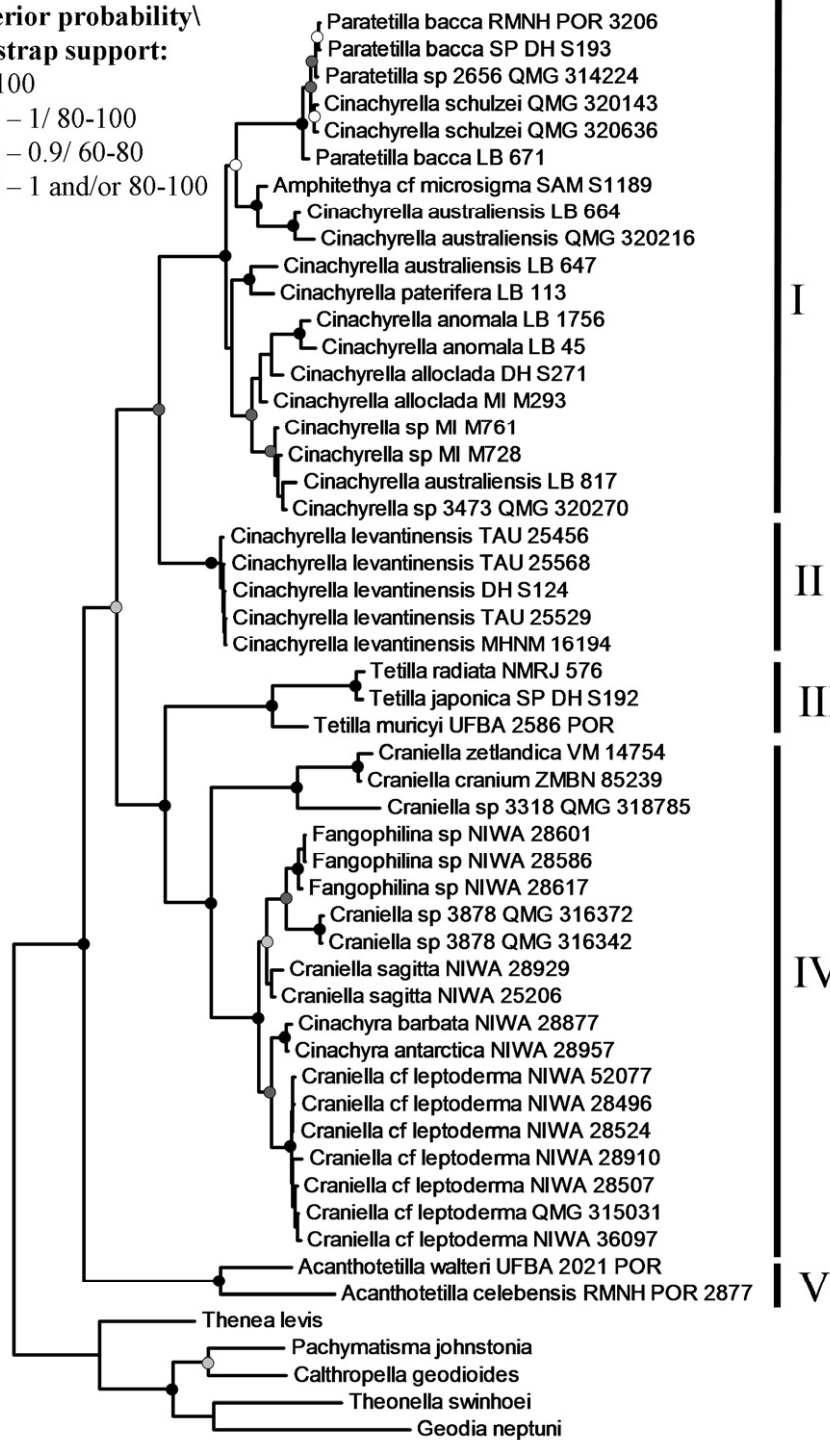
**Figure S2.** Phylogenetic tree of Tetillidae based on 28S rRNA gene sequences. Posterior probabilities/ Bootstrap values are denoted for each node.

**Figure S3.** Correlation plot of pairwise p-distances between *cox1* gene sequences and pairwise p-distances between 28S rRNA gene sequences.

Posterior probability\

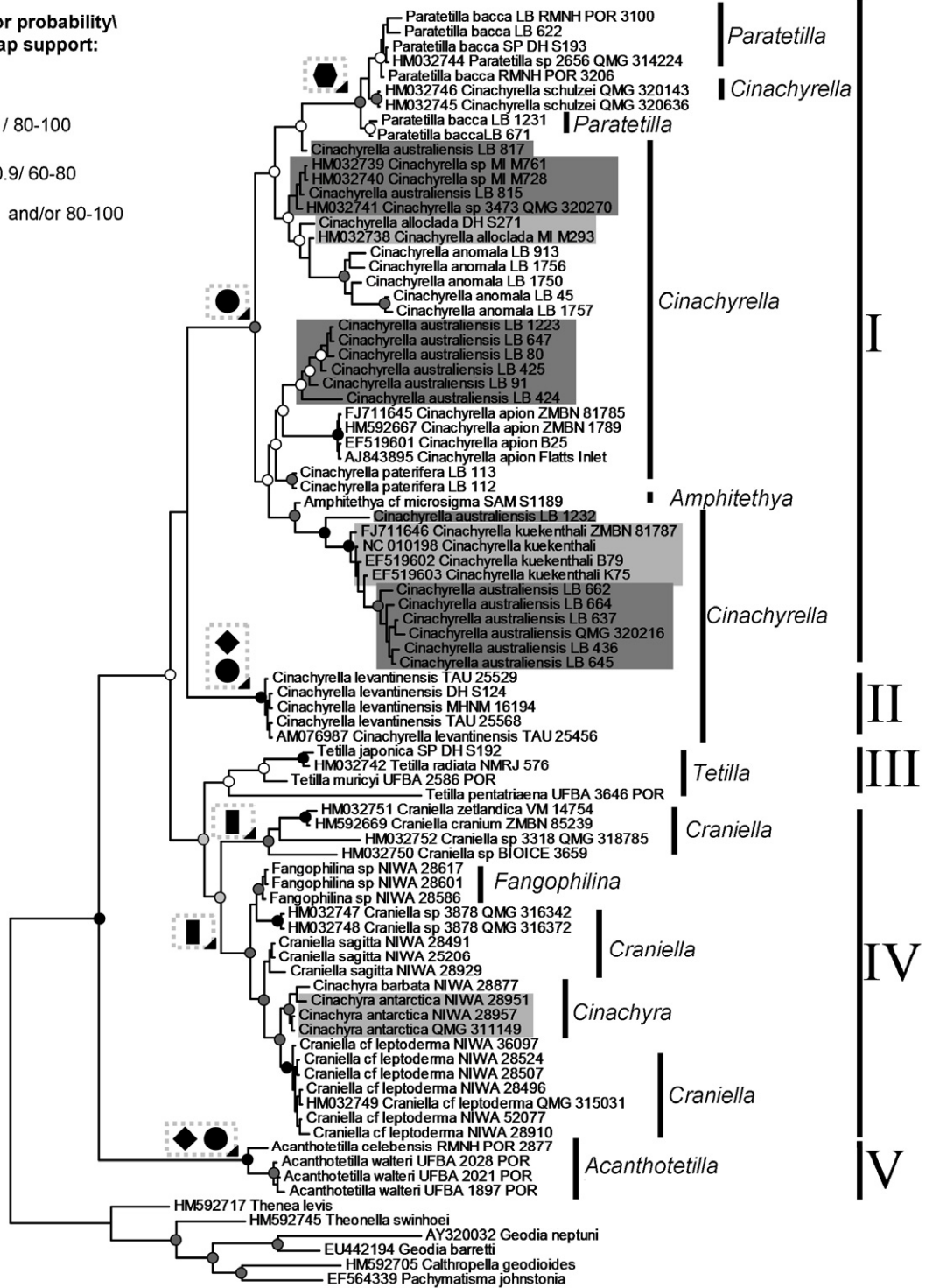
Bootstrap support:

- 1/ 100
- 0.9 – 1/ 80-100
- 0.8 – 0.9/ 60-80
- 0.9 – 1 and/or 80-100



Posterior probability/  
Bootstrap support:

- 1/ 100
- 0.9 – 1/ 80-100
- 0.8 – 0.9/ 60-80
- 0.9 – 1 and/or 80-100



AC

Graphical abstract



- The phylogeny of tetillid genera was investigated using the *cox1*, 18S rRNA and 28S rRNA genes. Five clades were identified.
- *Tetilla*, *Acanthotetilla* and *Cinachyrella levantinensis* formed three monophyletic clades.
- Species of the genera *Paratetilla* and *Amphitethya* were nested within *Cinachyrella*.
- Species of the genera *Cinachyra* and *Fangophilina* were nested within *Craniella*.
- Most diagnostic morphological characters were found to be homoplasious.