

Notes
 The ZTV is calculated to turbine tip height from a viewing height of 2m above ground level. The terrain model assumes bare ground and is derived from OS Terrain 50 height data (obtained from Ordnance Survey in July 2017). The ZTV extents for the wind farms are based on the 'Planning Guidance for Wind Turbine Development (Heads of the Valleys)' guidance. Earth curvature and atmospheric refraction have been taken into account. The ZTV was calculated using ArcMap 10.4.1 software.

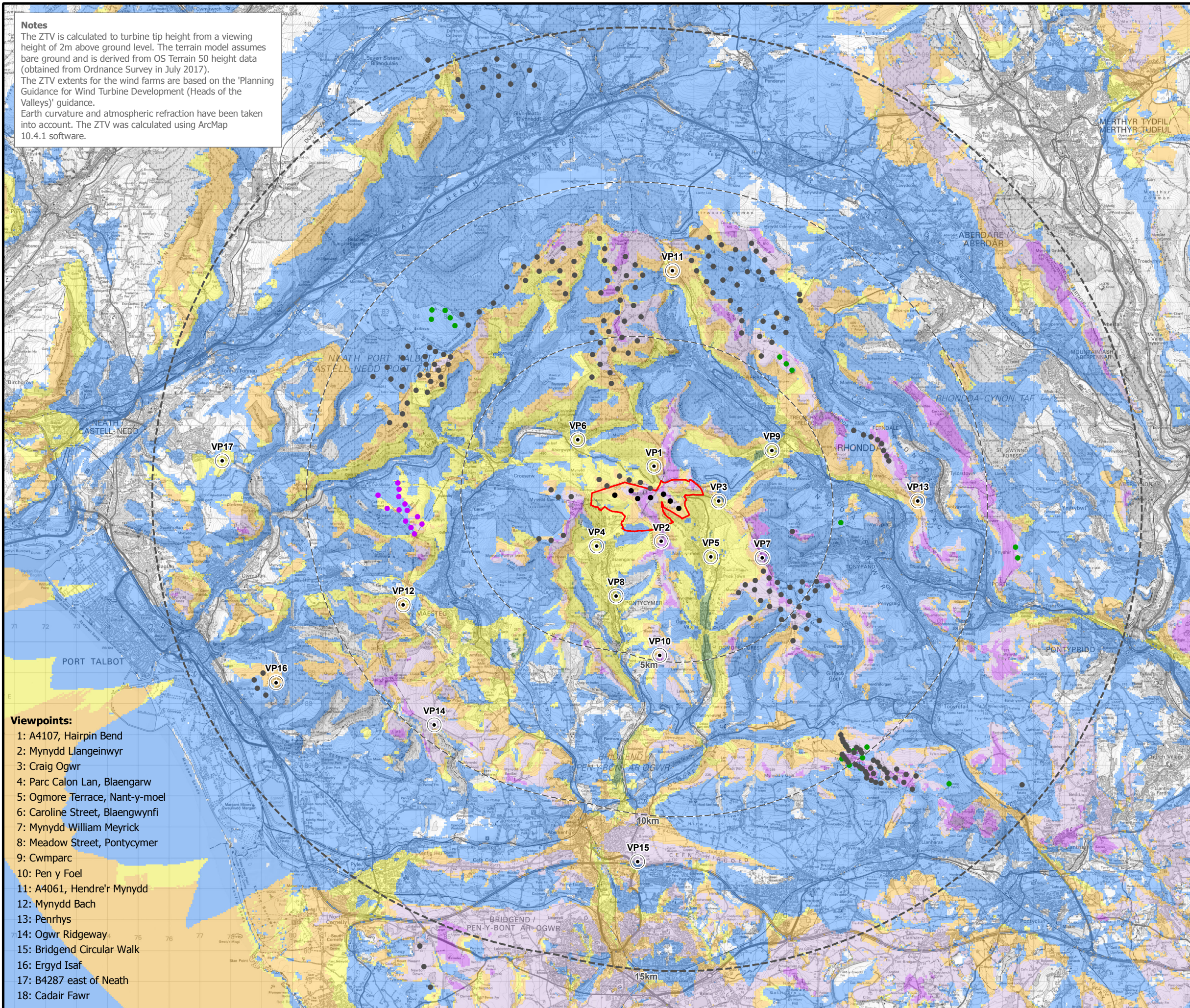


UPPER OGMORE WIND FARM

FIGURE 5.11

Cumulative ZTV to Blade Tip

© CROWN COPYRIGHT, ALL RIGHTS RESERVED. 2018 LICENCE NUMBER 0100031673.



- Viewpoints:**
- 1: A4107, Hairpin Bend
 - 2: Mynydd Llangeinwyr
 - 3: Craig Ogwr
 - 4: Parc Calon Lan, Blaengarw
 - 5: Ogmore Terrace, Nant-y-moel
 - 6: Caroline Street, Blaengwynfi
 - 7: Mynydd William Meyrick
 - 8: Meadow Street, Pontycymer
 - 9: Cwmparc
 - 10: Pen y Foel
 - 11: A4061, Hendre'r Mynydd
 - 12: Mynydd Bach
 - 13: Penrhys
 - 14: Ogwr Ridgeway
 - 15: Bridgend Circular Walk
 - 16: Ergyd Isaf
 - 17: B4287 east of Neath
 - 18: Cadair Fawr

- Site boundary
 - Upper Ogmore turbine location
 - 5km intervals from outermost turbines
 - 15km from outermost turbines
- Wind farms (by status)**
- Application submitted
 - Consented
 - Operational
 - Viewpoint location

- Theoretical wind farm visibility**
- Only other wind farms are visible
 - Only Upper Ogmore is visible
 - Upper Ogmore and 1-5 other wind farms are visible
 - Upper Ogmore and 6-10 other wind farms are visible
 - Upper Ogmore and 11-15 other wind farms are visible
 - Upper Ogmore and 16-20 other wind farms are visible
 - Upper Ogmore and 21-25 other wind farms are visible

Source: RES, LUC



LAYOUT DWG: 6822-5.11 T-LAYOUT NO.: PWALuog033

DRAWING NUMBER: FIG5-11_6822_r1_cZTV_OpUnConConApp_A3L
 CB:EL EB:lendak_e 24/09/2018



SCALE - 1:120,000 @ A3

LANDSCAPE AND VISUAL IMPACT ASSESSMENT

THIS DRAWING IS THE PROPERTY OF RENEWABLE ENERGY SYSTEMS LTD. AND NO REPRODUCTION MAY BE MADE IN WHOLE OR IN PART WITHOUT PERMISSION