

Weymouth Harbour

Guide
2018



HAMBLE • LYMINGTON
PORTLAND & N.IRELAND



NEW

WHYBOATS IN PORTLAND A GREAT BROKERAGE



WHYBOATS.COM have arrived in Portland Marina bringing with us our exceptional brokerage service & two fantastic brands in Elan Yachts & Ocqueteau Motorboats.

elan



OCQUETEAU

Why not pop in, we'd love to welcome you aboard.

whyboats.com +44 (0)2382 120000

UNIT 14B, Portland Marina, Osprey Quay, Portland, Dorset, DT5 1DX

Contents

To aid navigation of this guide, please refer to the colour-coded bars to the right of each page and match with the coloured sections shown to the right.



Published for and on behalf of Weymouth & Portland Borough Council by:

RESORT
MARKETING

Resort Marketing Ltd

St Nicholas House, 3 St Nicholas Street,
Weymouth, Dorset DT4 8AD
Tel: 01305 770111 | Fax: 01305 770444
Email: info@resortmarketing.uk
www.resortmarketing.uk

Tidal stream data and tide tables on pages 35-45 reproduced by permission of the Controller of Her Majesty's Stationery Office and the UK Hydrographic Office (www.ukho.gov.uk). © Crown Copyright.

No liability can be accepted by Weymouth & Portland Borough Council or the publisher for the consequences of any inaccuracies. The master of any vessel is solely responsible for its safe navigation. All artwork and editorial is copyright and may not be reproduced without prior permission.

© Resort Marketing Ltd, December 2017.



Dorset Councils Partnership

Welcome	4
Navigation, Berthing & Facilities	5
Harbour Team	5
Marina Berths	6
Visitor Berths	7
Harbour Facilities	8
Harbour Dues	9
Entering & Leaving the Harbour	10
Outer Harbour Berthing Chart	11
Weymouth Watersports Access Zones	12
PWC and Slipway Launching Fees	13
Weymouth	14
Things to See & Do	14
Local Festivals and Events 2018	16
Pommery Dorset Seafood Festival	17
Town Map	18
Time to Shop	20
Time to Eat	21
Dunkirk	22
Weymouth's Spirited Past	24
Fishing in Weymouth	25
Explore Dorset	26
Portland Bill & Portland Races	26
The Jurassic Coast	28
Heading West	30
Heading East	31
Safety	32
RNLI	32
Lulworth Ranges	33
Tidal Stream Data	35
Tidal Streams and Tide Tables	35
Bon Voyage	46
Offers	47
Yacht Clubs of Weymouth	48
Useful Information & Contacts	49
Marine Services	50
Marine Services & Sales	50
Business Listings	52

WELCOME

TO WEYMOUTH HARBOUR

“Once again, welcome to Weymouth Harbour. This year though we can say “as featured in the Warner Bros. film Dunkirk”, who recognised the charm of our harbour to select us. Hopefully you will enjoy your stay here as well.

Weymouth Harbour is planning to evolve for the future now that the decision has been taken to develop the peninsula area around the Pavilion Theatre and to end ferry services. We hope to be one of the prime leisure and fishing harbours on the South Coast, but there are a few challenges ahead as well. If you do enjoy your stay here, are working successfully in the harbour, or are a local berth-holder, please pass on the message about our harbour, of which we are very proud.

The team in the Harbour Office is here to help you. Please do not hesitate to contact us for information, advice and support. Your feedback is also very welcome, so please let us have your suggestions, comments and complaints as we will use them to guide us in shaping the harbour for the future.

Happy boating for 2018 and ensure it is a safe year.”

Keith Howarth

Weymouth Harbour Office

13 Custom House Quay, Weymouth,
Dorset DT4 8BG

Tel: +44(0)1305 838423.

Email: weymouthharbour@dorset.gov.uk

www.weymouth-harbour.co.uk



Photography Credits:

Resort Marketing Ltd, Geoff Moore, Nigel Lord, Guy Edwardes, FEAST Weymouth - Lara Jane Thorpe, Dorset Media Services, Weymouth and Portland Borough Council, West Dorset District Council., Paul Flowers, Rob Davis Photography, Jim Perkins; Photography My Way, Ian Carlile, David Potter Ed Coleman - www.edcolemanphotography.com

Harbour TEAM

Weymouth Harbour team has a passion for exceptional service

The team carries out a diverse workload day to day, ranging from berthing, boat storage, bridge lifts and budgets, to maintenance works, moorings, marketing and more! So whatever your enquiry, your friendly harbour team is happy to assist you wherever we can.

Within the busy (and hopefully sunny!) summer months, we also have our seasonal staff members who join the team. They are on hand to enable us to maintain customer focus during our busier periods and continue our great customer service.

If you would like to contact a member of the team, you can do so via our website www.weymouth-harbour.co.uk, call us on +44 (0)1305 838423 or via email:

- moorings@dorset.gov.uk - Annual/Temporary Moorings
- weymouthharbour@dorset.gov.uk - Visitor Moorings, Rallies/Group Bookings
- HarbourNews@dorset.gov.uk - E-Newsletter, Social Media, Marketing

To keep up to date with the latest news, tall ship visits and more, follow our Facebook page.



Weymouth Harbour (@WeymouthHarbourDorset)



Weymouth Harbour Berthing

MOOR FOR LESS

As the saying goes, it's all about "location, location, location!". At the heart of the Jurassic Coast, sheltered beyond the Georgian quayside, berths are a mere 5 minutes' walk to the town centre, historic outer harbour or beautiful golden sands and safe bathing waters of Weymouth's Blue Flag beach - a truly unique location offering excellent value for money!

Annual berth holders enjoy free use of the grid and slipway, berth holders' secure parking (minimal charges apply) and a 50% discount on town centre car park permits.

Our attractive and easy payment options mean that if you need to leave part way through the year (we hope that you don't!) there are no annual tie-ins and no hidden charges for paying by instalments, giving you the most flexible berthing package.

Short term, temporary use of berths and winter berthing are also available, as well as berthing for PWCs!

If you need any information, please contact us: we look forward to welcoming you as a customer.

Moorings Officers (Claire and Becky) +44(0)1305 838422
moorings@dorset.gov.uk

Berths available for up to 20m LOA

"Stunning location, very clean; a must place to visit, friendly locals and a memory maker."

"Family and friends had a fantastic time out on the boat today. Everyone at the Weymouth Harbour Office was really friendly and informative. Fantastic place!!"

Visitor BERTHS

Join the bustling atmosphere
in our vibrant harbour

Local, international, first time here or returning customer; a warm welcome is extended to one and all with sincere hopes for a pleasant stay, so much so that we hope you'll return for many years to come.

Most of our visitor berths are alongside floating pontoons, creating a vibrant and friendly community atmosphere. Visitor berths are located both on the south and north side of the harbour, with facilities accessible 24hrs daily on both sides, as shown on the chart on page 11.

- Vessels up to 10 metres should berth on the south side of the harbour (the Cove).

- Vessels over 10 metres should berth on the north side, either opposite the Lifeboat Station, adjacent to Weymouth Pavilion or outside the Harbour Office.
- Vessels over 18 metres; where possible advance notice of your arrival should give us an opportunity to try and make a suitable space.

Rallies and Events

As a popular destination for visiting rallies, Weymouth welcomes the opportunity to host your event. We aim to ensure your event gains maximum enjoyment both on and off the water, and to create an opportunity for you to enjoy a relaxed sociable atmosphere in the heart of the town. Please contact the Berthing Office on 01305 838423 to discuss your requirements and to book.



Harbour FACILITIES

Reception/Harbour Office is open 7 days a week from 0730 until the last bridge lifts (high season until 2100). You can also contact a member of the team on VHF Channel 12.

Showers are located on the ground floor of the Harbour Office and at North Quay (see chart on page 11). 24-hour access is available; a code to the door will be given to you on arrival.

Power and Water 240v electricity is available at visitor berths, and most marina berths benefit from metered electricity. If you require electricity during your stay, there is a plug-in fee payable and extension leads are available to borrow. Water is available at all visitor and marina berths.

Laundry facilities are located on the ground floor of the Harbour Office. The machines are token operated; tokens can be purchased from the harbour team.

Weather forecasts are posted daily on the noticeboards outside the Harbour Office.



Waste and Recycling Please recycle cans, bottles and paper by using the facilities opposite the Harbour Office. Household waste can be bagged and disposed of by using the wheeled bins adjacent to the Harbour Office. Batteries and oil can be collected and disposed of by a member of the team. Please do not place either in or by the wheeled bins as they become a magnet for vandals. If you see either beside the bins, please inform a member of the team and they will remove it. Likewise, if the bins become full, please contact us and we will arrange an appropriate alternative for you.

Notices to Mariners are displayed on the noticeboards outside the Harbour Office and on the pontoons, and are also available to view on our website www.weymouth-harbour.co.uk. Any increased activity in the harbour not requiring a notice to mariners can also be found on our website and Facebook page.

Fuel Diesel fuel is available from the jetty in the harbour and from mobile mini road tankers. Please check directory pages for local suppliers. The nearest petrol station is on King Street (see map on page 18).

Supermarket and cashpoints In the town centre there is a Marks and Spencer, Spar and Tesco and a selection of delis. A 10-minute walk will take you to an Asda superstore. Cashpoints are located at both Tesco and Asda and other locations within the town centre.

Book Swap Lose yourself in a book while you wait for your laundry, swap one of your finished reads for one in our stock or simply take a book for your journey when you depart from Weymouth. Donations of books also gratefully received.

Wifi is available for some visitor berths opposite the Harbour Office, please ask a member of the team for the code.

Keep in Touch

Facebook [@WeymouthHarbourDorset](https://www.facebook.com/WeymouthHarbourDorset)

Sign up to E-News harbournews@dorset.gov.uk

Price LIST 2018

A full list of charges is available on the website

Annual Mooring Fees

Marina Berths (per metre or part metre unless otherwise stated):

Marina single pontoon berth £349.13

Chain and sinker fees (*residents only)

Tenders up to 3m £18.24

Vessels over 3m. Max 6.5m £73.32

Temporary Mooring Inner Harbour:

1 April – 30 September (per metre, or part per week)

(min. below, max 13 weeks, min. 2 weeks between periods) (2 weeks' notice)

Up to 5 weeks (min. 2 weeks) £11.64

5 - 9 weeks (min. 5 weeks) £9.30

9 - 13 weeks (min. 9 weeks) £7.02

Winter Storage Afloat:

Pre-booked and paid for in advance 1 October – 31 March

(pro-rata minimum 2 months)

Outer harbour – without electric £75.60

10% surcharge for use of vessel at any time during the period of winter storage afloat.

Extended stay where available

1st – 30th April and 1st – 30th September £2.50

Winter Storage Electricity Meter Charges:

Meter refundable deposit £25.00

Standing charge £15.00

Rate per unit (subject to change if supply price changes) £0.17

Visiting Leisure Craft

Visitor Berths

Apr – Sept | Oct – Mar

Over 4 hours - up to 24 hours: £2.85: £2.20

Short stay (up to 4 hours, touch and go for drop-off or pick-up free)

Vessels up to 6m (LOA) £6.50

Vessels 6 – 12m (LOA) £8.50

Vessels over 12m (LOA) £10.50

Electricity – plug in charge where available per 24hrs:

16 amp supply £2.50

32 amp supply £5.00

63 amp supply £10.00

Boat On Trailer Storage:

Boat on trailer storage in the Commercial Area (per week or part of, per metre or part of) £2.40

(Prices correct at time of going to print)

See page 47 for offers and keep visiting our website www.weymouth-harbour.co.uk to find out about our latest offers; or sign up to our e-newsletter by emailing harbournews@dorset.gov.uk

Entering & Leaving THE HARBOUR

Harbour Entrance

The harbour entrance lies between two piers. The main channel is indicated by red transit lights at night and diamond shapes by day on the South Quay bearing 239° 38'. The leading lights at the approaches to Weymouth Harbour are high intensity units with a range of 7.5 miles.

A conspicuous addition to the skyline of Weymouth Bay, which provides a useful aid to navigation, is the Jurassic Skyline. This white chimney-like structure is 55 metres high and has a people pod which can be seen ascending and descending from time to time. At night it is marked by flashing red hazard lights. It lies 200 metres west of the Weymouth Harbour entrance.

Traffic signals are displayed in a vertical line from a mast on the South Pier. When passage in or out of the harbour is restricted the signals will be operational and the lights must be observed.

Please see Reeds Nautical Almanac 9.1.28 for full details.

DEAD SLOW SPEED IN THE HARBOUR

The speed restriction requires that operators of craft are to proceed at a speed whereby their wash does not cause annoyance to other harbour users.

Town Bridge

Mariners requiring bridge lifts should be within sight of the Town Bridge operator (on approach, the starboard side of the bridge) before the scheduled time listed, and listen on VHF channel 12 for Town Bridge information approximately 5 minutes before the scheduled lifting time.

Before entering the harbour, visiting vessels should contact Weymouth Harbour for berthing advice.

**Call sign "Weymouth Harbour"
on VHF channel 12**

Traffic Signals



indicates flashing light



Entry to harbour is clear with caution.



A vessel is LEAVING or is about to leave the pierheads area. No other vessel may approach the pierheads in such a way as to obstruct the pierheads area.



All vessels await instructions.



A vessel is APPROACHING the pierheads area from seawards. No vessel may leave that part of the harbour which lies west of the pierheads area.



Port Closed.
Entrance foul.
No vessel may enter the pierheads area.



A vessel may proceed only when it has received orders to do so.

The waiting pontoon on the port (south) side is available for inbound visitors. A fee may be charged if the next scheduled bridge is not used. Bookings for bridge lifts can be arranged by calling Weymouth Harbour on VHF channel 12 or by telephoning +44(0)1305 838423 (answer phone when not manned). Bookings in advance are required during the winter. Mariners are reminded that the traffic lights at the Town Bridge are to be obeyed by all vessels, regardless of size.

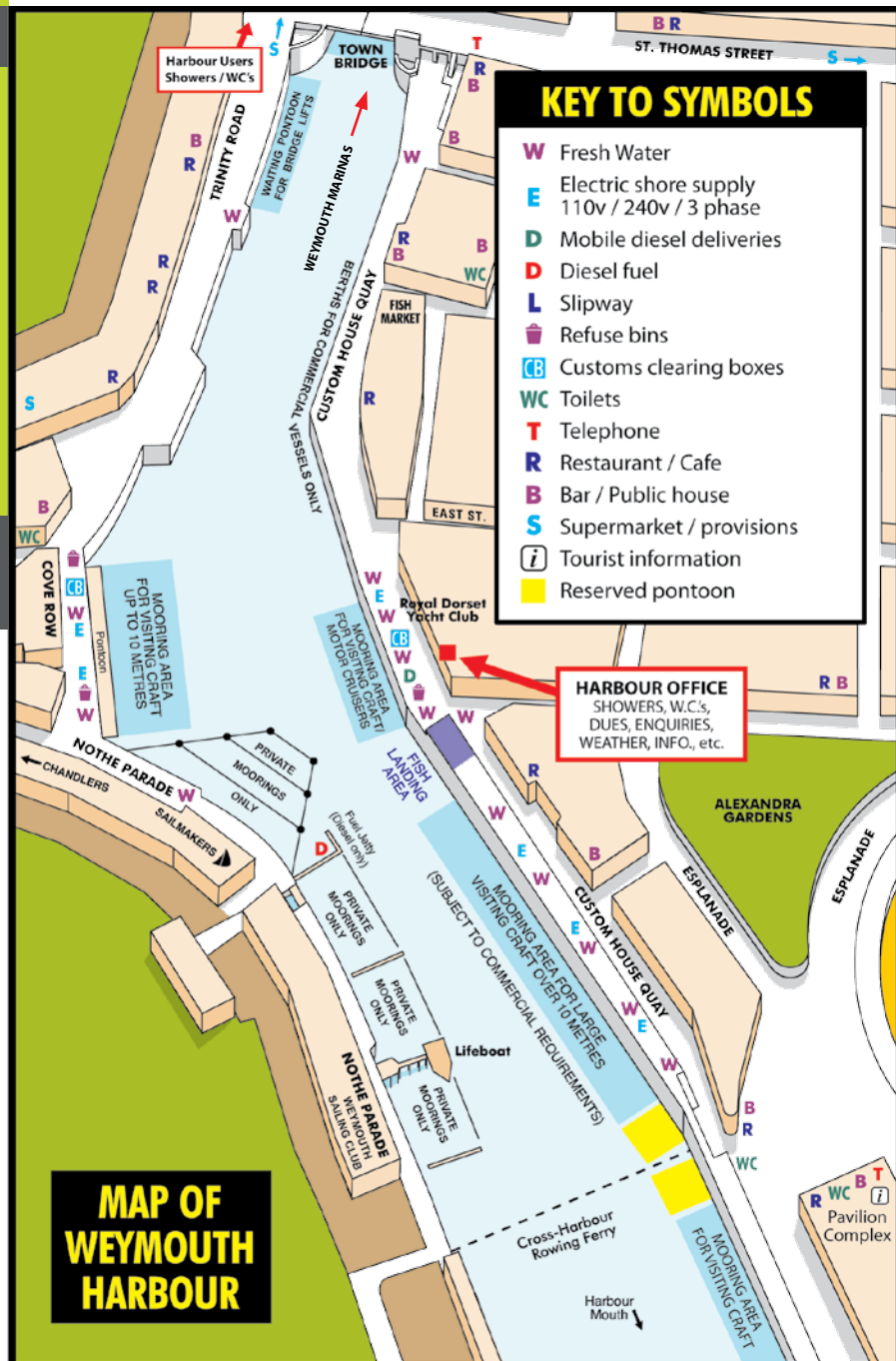
Bridge Lifting Times

15 April – 15 Sept inclusive:
Every two hours from 0800 to 2000. In June, July & August there's an additional lift at 2100.

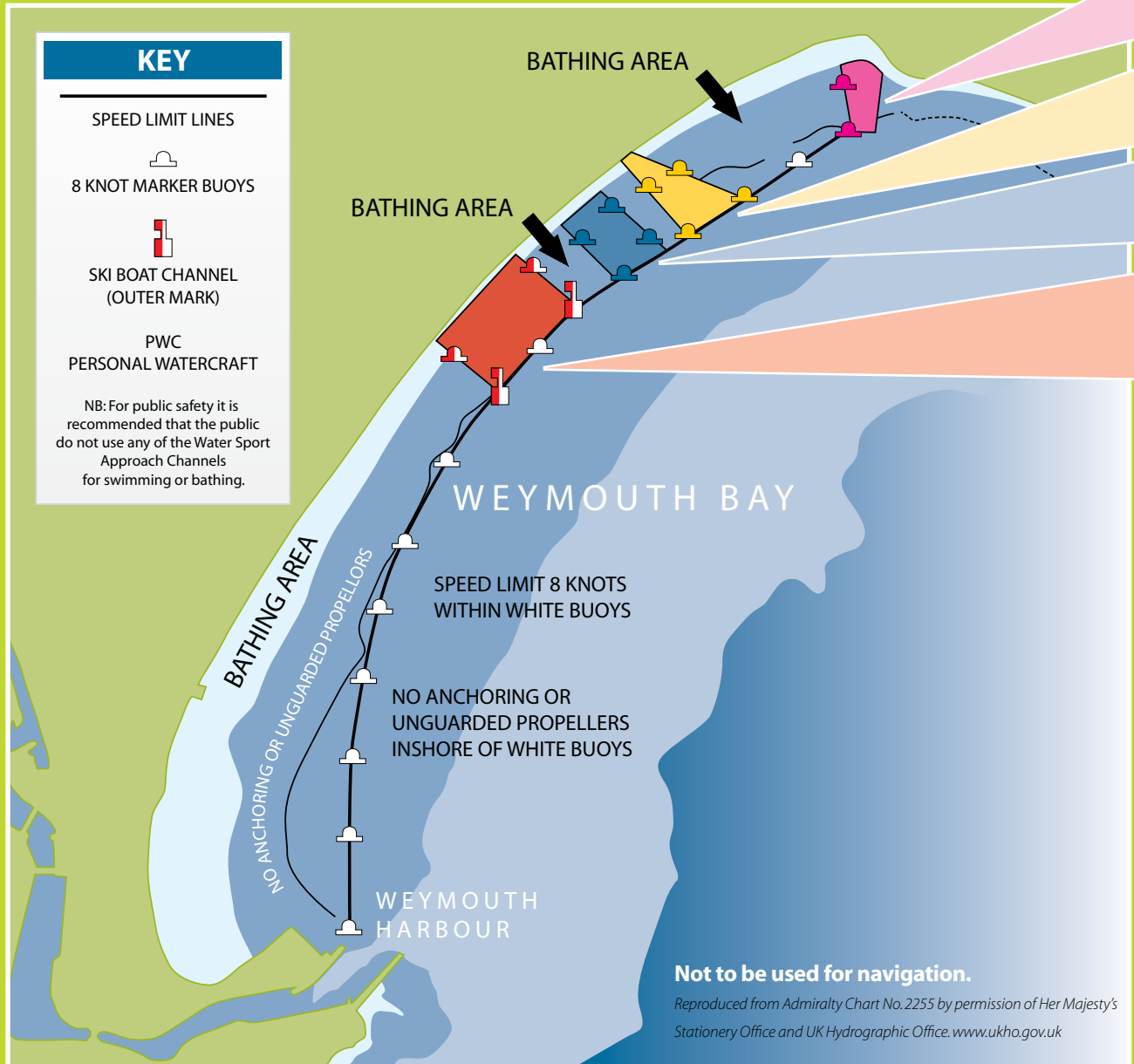
16 Sept – 14 April inclusive:
Every two hours from 0800 to 1800. A minimum of one hour's notice is required for lifts during this period.

Outer Harbour Berthing Chart

1. Before entering the harbour, please contact us on VHF12 for berthing advice. Call sign "Weymouth Harbour."
2. Vessels visiting during 'silent' hours should proceed to a suitable berth as shown on the Harbour map opposite. If a vacant berth is not available please berth alongside a vessel of similar length and type.
3. Fairway Position: Lat. 50° 36.72' N. Long. 02° 26' W
Charts: 2172, 2255, 2268
Prevailing Winds:
West/South-westerly
4. Dead Slow Speed in the Harbour – if in doubt about your speed, look behind you, you may be surprised at the effect your wash is having!



Weymouth Watersports Access Zones



PWC Lane

Entry / exit lane ONLY, designated for PWC. Please note that there is a 5mph limit at the shore end of the zone.

Sailboard Approach

This channel is for sailboards only. No other vessels should enter this lane at any time.

Anchoring Zone

This zone is designated for anchoring vessels. When proceeding to this zone, please keep to the **8 knot limit**.

Ski Boat Approach

This channel is only for vessels to gain access to the beach to pick up water skiers. Water skiing activities should be kept seaward side of the white 8 knot buoys.

Weymouth Bay Safety Instructions

- All craft should mainly keep to seaward of the white buoys across Weymouth Bay.
- Do not enter and/or attempt to anchor in the bathing areas shown on the map. Propellers and anchors could seriously injure bathers, therefore, common sense and good seamanship dictate that navigation and mooring in bathing areas should always be avoided.
- The water-skiing channel, marked by red and white buoys, is only suitable for water-ski craft to gain access to the beach. Once passengers and water skiers have been collected from the beach all water ski activities should take place seaward of the white buoys.
- Harbour byelaws require water ski boats to have at least two people in the boat whilst engaged in skiing, thus allowing one person to act as lookout astern.
- The jet ski channel (marked by red buoys) must only be used to gain access to the beach. After launching, all jet ski activities should take place seaward of the white buoys.

Water Sports Permits

A permit is required for any powered aquaplaning activity in Weymouth Bay, including personal water crafting (jet-skiing), water skiing, wakeboarding and the towing of donuts etc.

Permit Fees

Per Day	£9.50
2 Day (must be consecutive days)	£15.00
Per Week	£30.00
Annual (from Harbour Office only)	£100.00*

*RYA PWC certified £75.00

- Berthing available in the marina, please call for details; PWC berth holders require RYA and PWC certificate.

Permit application forms are available from the Harbour Office and should be returned there when completed. For details of launch sites for PWCs (jet-skis) please contact the Harbour Office. Please note: Portland Harbour is subject to regulations set by Portland Harbour Authority – contact +44(0)1305 824044 for details.

Boat Launching Facilities

(contact the Harbour Office for more details)

- Weymouth Inner Harbour
- Bowleaze Cove, Weymouth
- Overcombe Corner, Weymouth (windsurfing and kayaks only)
- Castletown, Portland
- Ferrybridge, Portland Road

Weymouth Inner Harbour Slipway Fees

Launch and Recover per Day	£10.50
Annual Permit (launch only)	£145.00
Trailer Park per Day	£7.00

(Prices correct at time of going to print)

Things to SEE & DO

The harbour is perfectly situated in the centre of Weymouth and is just a stone's throw away from all that the town has to offer.

Whether it's visiting the labyrinth of underground passageways at the historic Nothe Fort, taking in the fantastic views of the Isle of Portland from the peaceful Nothe Gardens, or just enjoying an ice-cream on the golden, sandy beaches that flank the town, Weymouth has a wide range of attractions to suit all.

Whether you explore by foot or on two wheels, there is a variety of walking routes to discover on our website www.weymouth-harbour.co.uk/thingstodo/ as well as the new Visit Dorset interactive map.



The Rodwell Trail, once a railway line linking Portland to Weymouth, is ideal for walkers and cyclists. It leads to Ferrybridge and on to the stunning 17-mile-long Chesil beach. Behind the beach is the Fleet Lagoon, the largest saline lagoon in the UK and rich in marine species. With a number of cafes and bars en-route, this area is a must-see for the views alone.

If you climb the island of Portland you will see evidence of the quarrying of the famous Portland stone. Visitors can explore the now disused Tout Quarry, where sculptors from around the world have carved images in stone amongst the many paths.

No visit to Portland would be complete without visiting Portland Bill. During the summer months, guided tours of the lighthouse are available at certain times, when it is also possible to climb the 153 steps.

Back in Weymouth itself, nature enthusiasts can enjoy some peace and tranquillity and see several species of duck and sedge warblers at the nearby RSPB reserve at Radipole Lake; and strolling further along the Esplanade you'll find Lodmoor RSPB reserve.

From April, those with a head for heights can enjoy the fabulous views seen from the 'Jurassic Skyline' soaring 53 metres above the ground. Its slowly revolving observation deck offers a panoramic vista of the beautiful West Dorset countryside and is open throughout the summer months.

You don't have to be a military enthusiast to enjoy the Nothe Fort; it's a great day out for all the family with lots to see and explore. Located at the entrance to Weymouth Harbour, the Nothe Fort is a labyrinth of underground passageways and outdoor areas with stunning views of the Jurassic Coast. Constructed on three levels, the Fort is filled with displays, mammoth guns and cinema areas that chart the history of this large and magnificent Victorian structure.

Weymouth offers a wide range of attractions for all the family. The Sealife Park and Pirate Adventure Golf can be found at Lodmoor; whilst the Pavilion Theatre, situated just off the harbourside, presents a year-round programme of shows. There's also tenpin bowling; Weymouth Swimming Pool and Gym; and a 9-screen cinema to keep you entertained if the weather turns grey.



YOUR CHANCE TO WIN UP TO
£20,000
EVERY DAY AT GALA BINGO

FREE MEMBERSHIP & ADMISSION

You'll love the buzz x





**Weymouth Club, 18 Crescent St,
Weymouth, Dorset DT4 7BX.**
Tel: (01305) 785180

Terms and Conditions apply, please ask in club for details. Enjoy the game, please play responsibly.
www.gambleaware.co.uk. Need help?
Call GamCare free on 0808 802 0133.

Great Local Festivals & EVENTS 2018

From family festivals, sporting challenges to art and craft, below are some of the great highlights from over 200 events taking place throughout Weymouth and Portland in 2018.

For the latest event news visit – www.visitweymouth.co.uk

25 March	The BIG Weymouth Walkies
26 – 27 May	Fayre in the Square
1 – 3 June	Wessex Folk Festival
23 – 24 June	Weymouth & Portland Armed Forces Day Celebrations
14 – 15 July	Pommery Dorset Seafood Festival
27 – 29 July	Weymouth Beach Volleyball Classic
14 – 15 August	Weymouth Carnival
8 – 9 September	Weymouth Yacht Regatta
23 September	Ironman 70.3 Weymouth
25 December	Christmas Day Harbour Swim

All Events can be subject to change/cancellation due to weather/operational constraints and conditions. Please confirm event details on www.visitweymouth.co.uk before travelling.

Pommery Dorset SEAFOOD FESTIVAL

A highlight of Weymouth and Portland's event calendar, and a weekend not to be missed, is the award-winning Pommery Dorset Seafood Festival. A wonderful free-to-attend event that attracts over 50,000 visitors each year, be sure to catch the 2018 Festival taking place around the harbour on 14th & 15th July.

With approximately 100 stalls, you can spend a leisurely two days meandering around the Festival, feasting your eyes and bellies on an enticing array of delicious seafood and amazing champagne, whilst getting the culinary know-how from celebrity chefs.

This award-winning Festival scooped the joint Gold award for 'Tourism Event of the Year' at the Dorset Tourism Awards 2017. And to top the celebrations, 2017 also saw them raise £10,000 for their charity partner, The Fishermen's Mission.

For more information visit www.dorsetseafood.co.uk



TOWN MAP















To: Dorchester, Bristol, London

To: Preston, Dorchester

To: Portland, Bridport, Jurassic Coast (COASTLIX53)



KEY

-  Supermarket
-  Parking
-  Toilets
-  Disabled Toilets
-  Tourist Information
-  Main Bus Stop
-  Pedestrianised
-  Main Shopping Areas
-  Harbour Walk
-  RSPB Nature Walks
-  Rodwell Trail
-  Slipway



Time to SHOP



CAR & COMMERCIAL SELF-DRIVE HIRE

Book on-line for a discount

www.dorsetvehiclerentals.co.uk

or call Central Reservations free on **08000 51 52 53**

**UPWEY SERVICE STATION 727 DORCHESTER
ROAD, UPWEY, WEYMOUTH DT3 5LF**

Branches Also At Bridport, Dorchester, Gillingham, Yeovil & Wincanton

Delicious™
QUALITY FOOD. LOCALLY SOURCED.

WINE
MERCHANT

HAMPERS

PRIVATE
HOSTING

FRESHLY CUT
CHEESE

WINE
TASTING

GIFTS

DORSET
PRODUCE



t : 01305 789033
e : hello@deliciousweymouth.co.uk
w : www.deliciousweymouth.co.uk



Whether you need to stock up on holiday essentials or are looking for that distinctive gift, Weymouth has a large selection of retailers to suit your taste. And with the harbour being perfectly situated at the heart of Weymouth, all of this is within a short stroll from your boat.

Alongside the harbour you will find the local fish market, an angling shop, art galleries, gift shops and, of course, ships' chandlers.

St Thomas, St Mary and Bond Street are the trendiest places to be with high street fashion such as Marks and Spencer, Debenhams and Monsoon, quality jewellers and individual stores to delight in. While side streets such as St Alban Street offer individual boutiques and local shops supplying everything you would need for a day on the beach.

There are also plenty of coffee houses, cafes and bakeries, so why not take the weight off your feet and enjoy a fresh cream tea while you recharge in preparation for the next round of shopping!

Time to EAT

Weymouth offers an outstanding assortment of dining experiences: from traditional Dorset cream teas to fine dining, there are eateries to take you through the whole day, from breakfast to dinner and to suit any palate. All of these are just a stone's throw from your mooring or a short stroll into the town.

As you would expect from an historic harbour there are plenty of pubs alongside, and with most offering good food throughout the day, visitors are spoilt for choice. Between October and November many of the local restaurants offer special set menus as part of the annual FEAST Weymouth, an 8-week event celebrating Weymouth's great independent restaurants, pubs and cafés.

Fish features highly on many menus and with some of it landed right on the doorstep it couldn't be fresher. Look out for hand-dived scallops or local lobster, and oysters grown at the Fleet, just a mile or so away, are another must-try.

The continental feel along the harbour continues into Hope Square, with outside seating providing alfresco dining under open sun parasols, while hanging baskets brim with stunning flowers.

Amble along the side roads off the harbour and you'll find Weymouth's popular Italian, Indian and Chinese restaurants, as well as a host of coffee shops, fast food outlets, Thai restaurants and small cafes serving traditional British fare.

Relax on deck and enjoy the town's atmosphere whilst you sample traditional fish and chips from one of the nearby takeaways, then sit back and watch the surroundings as the scene transforms on and off the water.

Across Dorset there is a fantastic variety of locally produced food and drink, a portion of which is produced, stocked or served in Weymouth.

www.dorsetaonb.org.uk/food-and-drink



Photo: FEAST
Weymouth
Lara Jane Thorpe

MARLBORO
LICENSED
RESTAURANT
& Take-away

Established
1974

10% OFF
All restaurant & take-away meals
on production of this guide

Open All Day 7 Days a Week
Visit the Marlboro for the very
best in take-away food and Fish
and Chips, or take a seat in our
popular and friendly restaurant.

• marlborofood@aol.com
• www.marlbororestaurant.co.uk

46 St Thomas Street, Weymouth (Near Town Bridge) Tel: (01305) 785700



Dunkirk

A film scout for Warner Bros. walked in to the Harbour Office in early 2016, explained that another harbour had let them down and thus started the journey to stardom for Weymouth. The harbour was accepted by Christopher Nolan, the film's producer, to be the setting for some of the scenes in a block-busting feature film about Dunkirk.

There were weeks and weeks of preparation as it was decided how to transform the area for period scenes. Which items would be removed and what props to be added? There was considerable consultation with the harbour users and local community to minimise the impact of closing the area. Weymouth Sailing Club, for example, entered the Dunkirk spirit by agreeing to move all the vessels on their moorings so that there was a clear harbour. Locals were recruited as extras.

As the filming dates approached the number in the production team increased daily, especially when the catering and support vehicles all arrived from a previous filming location. The former Ferry Terminal and the Pavilion Ocean

Room became their base. Some interesting vessels were chartered to add to the scenery, which also included some local boats.

Day and night filming for a week in July 2016 essentially took place between the Harbour Master's Office and the Pavilion Theatre, closing Custom House Quay for the period. The insides of two houses were also transformed and used, one as a newsagent/post office and the other as a kitchen. There was considerable interest from the general public, with a lot of speculation about which stars were performing in the film and whether they had been seen locally.

After the filming had taken place the area had to be restored to its former condition. 60 tons of dirt to be swept up, lamp-posts to be replaced, paint to be peeled off and many more tasks before the film team could leave.

The film was released in July 2017 and Weymouth can be proud of its contribution.



weymouth
marina



*A haven of tranquility beyond the bridge
Visitor, monthly and annual berths*

01305 767576

weymouthmarina.co.uk

Weymouth's SPIRITED PAST

Looking around modern Weymouth it is easy to see the physical evidence of its rich and varied history. Weymouth boasts the Victorian-era Nothe Fort, an immaculately preserved Tudor house on Trinity Street, and a 16th-century house with Civil War cannon shot still visible on its gable.

Today, while Weymouth appears to have left its history behind whilst striving forwards to become a popular modern tourist resort, local tales would have us believe that some of the town's previous residents continue to walk the streets on dark nights!

The most ancient of these spirits is said to be a ghostly legion of Roman soldiers, who walk the old Roman road from Weymouth to Dorchester along what is known locally as the Ridgeway. Weymouth's proximity to the Celtic stronghold of Maiden Castle at Dorchester resulted in a large military presence, as the Roman army sought to control the area following their invasion of the British Isles.

A second ghostly army has been heard rather than seen. On 9th of February, the anniversary of the 1645 Battle of Weymouth in the English Civil War, locals tell tales of hearing the sounds of battle drifting around Franchise Street in Chapelhay. The battle, fought mainly across a drawbridge crossing the harbour near to the site of the current bridge, is said to have been so bloody that it isn't difficult to believe that some of those who perished still manage to make their presence felt.



The Boot Inn, also located in Chapelhay, is said to be Weymouth's most haunted pub, with noises and apparitions seen by many down the years, including a previous owner who declared to having seen an old seaman dressed in maritime attire. Perhaps the seaman was in fact not a ghost but one of our very own fishermen looking to quench his thirst before taking the next bridge lift out to check his lobster pots in the bay!

Weymouth's military hauntings continue, unsurprisingly, at the Nothe Fort, built in the Victorian times to protect the developing naval base at Portland. An unfortunate soldier known as the 'Whistling Gunner' is said to still occupy his old post, whistling in death as he did in life.

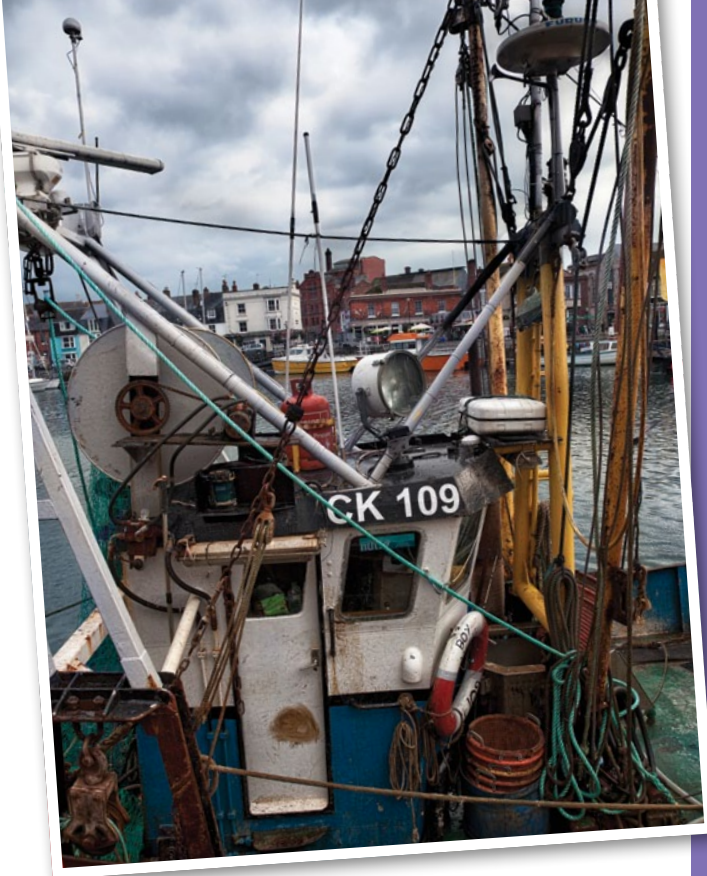
If all these spirits elude you there are always others to be found in any of Weymouth's excellent selection of pubs and bars, of which there are over fifty.

Fishing in WEYMOUTH

Not only is Weymouth an idyllic yachting destination, but it is also a lively, commercially important working harbour. Despite its modest size, the port boasts an impressive fishing fleet consisting of both commercial and private charter vessels. They range in size and shape from the small whelking vessels to the substantial trawlers. The fish landing quay is situated just outside the Harbour Master's office on the north side of the harbour, and on most evenings visitors can watch the local fishermen land their catches onto the quayside.

A wide range of both finfish and shellfish are caught in the bay and the local coastal waters. The rocky shelves around Portland Bill are especially rich in shellfish, including brown crabs and the European lobster, as they provide an ideal habitat for these crustaceans. Much of the catch is sold to local restaurants and fishmongers, enabling them to serve the freshest fish possible on a daily basis. However, a significant portion is exported to European markets, which is why Weymouth Harbour is an internationally significant fishing port. For example, there is great demand in Europe for British edible brown crab, and over 500 tonnes of crab are landed in Weymouth annually. These crabs are mainly caught using traditional pots, which is generally viewed as less disturbing to the natural habitats than other methods, such as trawling.

There is a large number of private fishing vessels available to charter. They operate all year round, catching flatfish in the spring and summer months and huge bass and channel whiting in the colder winter months. And, except perhaps for the early start, they provide enjoyable and memorable days out for many groups.



During early July, Weymouth Harbour is the setting for the annual Dorset Seafood Festival, which showcases the locally-caught fish and shellfish landed in Weymouth and is a fantastic opportunity for visitors to taste the local catch, which is prepared and cooked in a variety of styles out on the quayside. Due to the growing popularity of this event, the Festival grows year upon year, and several celebrity chefs also show their respect for the quality of the produce by giving cooking demonstrations and sharing their top tips. Thanks to continued scientific research and the knowledge and experience of the local fishermen, catches in Weymouth continue to increase year upon year, supporting not only a hungry European market, but also the close and tight-knit Weymouth fishing community. For those whose boats operate out of Weymouth Harbour, fishing is not just a job - it's a lifelong passion!



Portland Bill & PORTLAND RACES

When sailing west from Weymouth Harbour, it is suggested that craft are at Portland Bill 4 hours after high water Portland in order to gain the best use of the surrounding tides. Portland Bill is approximately 7 miles by sea from Weymouth Harbour entrance and due allowance must be made when planning departure time from here.

Portland Race can be a treacherous place and should always be avoided, particularly during spring tides, but with sensible passage planning the bonus of the tidal effects when running to the west can be considerable.

Tidal streams and tide tables are found on page 35.

Approximate distances in nautical miles from Weymouth Harbour to places to visit:

LULWORTH COVE	7
WORBARROW BAY	10
PORTLAND HARBOUR	3
CHAPMAN'S POOL	15
RINGSTEAD BAY	3



portland
marina

**Complete yard services
for boats to 22m**

01305 866190

portlandboatcare.co.uk





The Jurassic COAST

Stretching from Orcombe Point, East Devon to Old Harry Rocks, East Dorset, the Jurassic Coast provides 95 miles and 185 million years of Earth history. The stunning coastline spans the Triassic, Jurassic and Cretaceous periods and its entire length of this Natural World Heritage site can be walked on the South West Coast Path.

To the east of Weymouth there are interesting walks and beaches where you can see the fascinating changes in the rocks, from erosion and fossilised burrows to ancient marine animals, which you don't have to be a geologist to enjoy! Children can imagine the tropical seas and dinosaur-infested swamps that once covered the land; trace fossils around Osmington Mills and, if you're lucky, see dinosaur footprints and trackways in Purbeck.

The famous arch of Durdle Door is one of the Jurassic Coast's well-known landmarks, and at Lulworth Cove an extraordinary Fossil Forest can be seen on the cliff edge to the east. The 'doughnut-shaped' structures were made from trees that once grew and were then submerged in swamps.

Above the Fossil Forest lie the Purbeck Beds, a series of rocks that formed when conditions were harsh and hot and where dinosaurs once roamed. Chesil Beach, with the Fleet behind it, is one of the finest barrier beaches in the world and there are still debates over its formation today. The shingle banks link the

mainland to Portland, where old quarries provide a glimpse of the historical Portland stone workings.

An ambitious project on the Isle of Portland which aims to make use of these quarries, is a joint venture between what was going to be 'Jurassica': a geological park and Memo: a biodiversity project. Joining forces, they will create a £15.8m visitor attraction, housed within an impressive underground network of mine tunnels on the island, with the aim to inspire wonder in the natural world and tell stories of the evolution of life on earth. Once built, 'The Journey' as the project will be known, will be a unique, world-class international tourist attraction. Watch this space for more info: www.memoproject.org or www.jurassica.org

Looking west, the beaches around Lyme Regis and nearby Charmouth are world famous for fossils, whilst one of the most dramatic sights along the Jurassic Coast is the stacks at Ladram Bay, East Devon. Formed from caves that over time were hollowed out by the sea, they then became arches which eventually collapsed, forming the stacks we see today. The red colour of both the stacks and the cliffs is due to iron minerals that have weathered over time, telling us that the land was once a hot desert area.

For more information on this significant coastline go to www.jurassiccoast.com



Situated in the heart of the Jurassic Coast, England's first natural World Heritage site, Weymouth is the perfect base from which to explore this spectacular coastline.

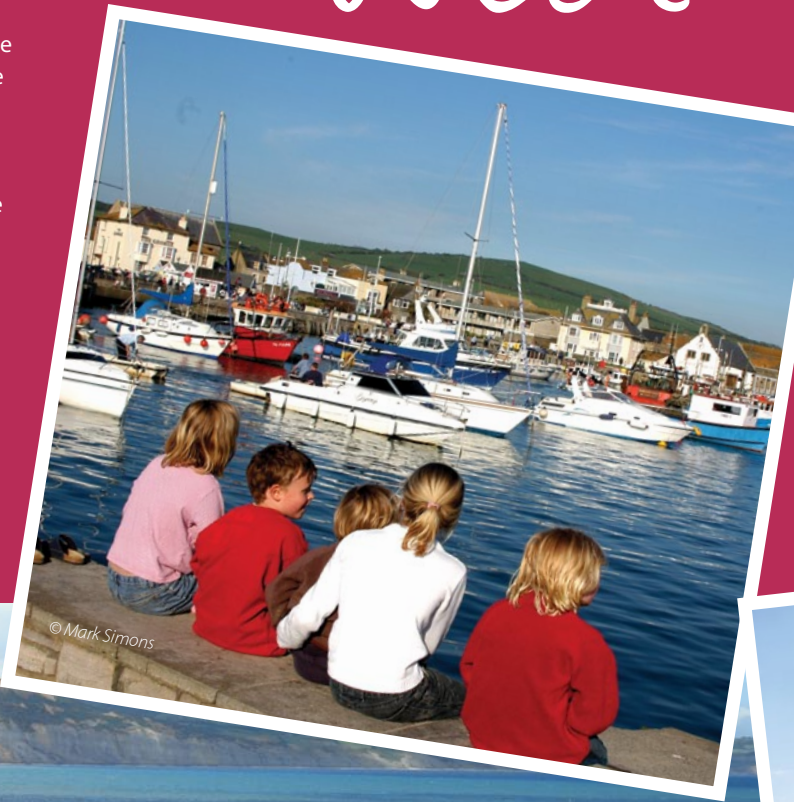
A short cycle ride westwards around the Nothe Fort and headland leads to the eastern end of the magnificent Chesil Beach. This shingle bank is one of the finest barrier beaches in the world, linking the Isle of Portland to the mainland and forming a shallow, tidal lagoon known as the Fleet. Exploring the Fleet leads to the swannery at Abbotsbury, the only place in the world where you can walk amongst nesting swans.

Further afield are the picturesque harbours of West Bay and Lyme Regis. The Victorian village at West Bay is perfect for those visiting with families, with plenty to do such as crab fishing in the harbour.

Renowned for its fossils, its literary links and instantly recognisable harbour wall known as 'The Cobb', it is clear to see why the charming town of Lyme Regis is known as the "Pearl of Dorset".

Visitors' moorings are available at both West Bay and Lyme Regis harbours; their contact details can be found on page 49.

HEADING West



HEADING East

To the east lies the famous arch of Durdle Door and the picturesque Lulworth Cove. Formed around 140 million years ago by the erosion of softer rock behind the hard Portland limestone, Durdle Door is perhaps the most iconic landmark on the Jurassic Coast. At the foot of the arch lies a sweeping beach that has been used extensively in film and television.

A short hop eastwards leads to the beautiful Lulworth Cove. Its calm, sheltered water is in contrast to the wild surrounding coastline; it's here you will find the world-famous Fossil Forest. The rugged cliffs offer rewarding walks with breathtaking views of Weymouth and Portland back across the Lulworth Banks.



safety

General

All vessels should hold appropriate third party insurance cover of £2,000,000 minimum.

Large vessels occasionally operate within the harbour. Their powerful thruster units and feathering propellers often cause turbulence that can be hazardous for smaller craft – please keep clear at all times.

It is illegal and dangerous to proceed against traffic signals, which are often used during the manoeuvring of large vessels. Small rowing ferries operate across the harbour in summer (see chart on page 11) please give way to them, giving them a wide berth at a slow speed.

Please store all petrol aboard in metal containers and place adequate fire fighting equipment in position to deal with engine and cooking appliance fires.

Weather

Always check weather conditions before leaving the harbour. A noticeboard indicating the latest inshore waters forecast is displayed outside the Harbour Office (see chart on page 11). An initial announcement for full information broadcasts at 0730 and 1930 are made on VHF CH16 (and MF 2182 KHZ) indicating which VHF channel and MF frequency to listen to. There is then a local information broadcast providing weather messages, gale or strong wind warnings and shipping forecasts for Portland (Selsey Bill – Lyme Regis, Lyme Bay channel VHF 86 and South & East channel VHF 84) every three hours:

0730 1030 1330 1630 **1930** 2230 (UTC)

Pre-planning

For long voyages, please notify the Maritime & Coastguard Agency. For all shorter trips it is advisable to let a friend or relative know what you are doing and when you expect to return.

Coastwatch Portland Bill

The Portland Bill Surveillance Station was opened by the National Coastwatch Institution in 1997. Some 40 volunteers maintain watches over Portland Bill, the Portland Race, Weymouth Bay and Lyme Bay from 0700 – 1900 every day of the year. The station relies entirely on voluntary contributions and is there for your safety. More information is available at the Harbour Office.

RNLI ADVICE ONBOARD

Every year the lifeboats respond to an increasing number of incidents, many of which could have been prevented with simple safety precautions.

Make your boat as safe as possible by booking a free RNLI Advice Onboard check.

What is Advice Onboard?

This free, friendly and confidential service looks at the safety aspects of your boat. Conducted by a highly trained volunteer, Advice Onboard is a personal, face-to-face safety advice service that takes place onboard your craft. Visits are tailored to your vessel and the type of boating you do and include:

- a free, independent discussion on boat safety equipment
- an opportunity to discuss safety matters, tapping into a wealth of knowledge and experience
- a sticker showing your support for the scheme
- a copy of the completed form, which is a written summary of the main points discussed.

The whole Advice Onboard service is free. The service is available in all parts of the UK and the RoI, at your convenience and to anyone who goes to sea in almost any type of leisure craft.

For more information or to book a session visit [rnli.org/safety/choose-your-activity/yacht-sailing-and-motorboating/advice-onboard](https://www.rnli.org/safety/choose-your-activity/yacht-sailing-and-motorboating/advice-onboard)

www.rnliweymouth.org.uk



Lulworth Ranges

Danger Area

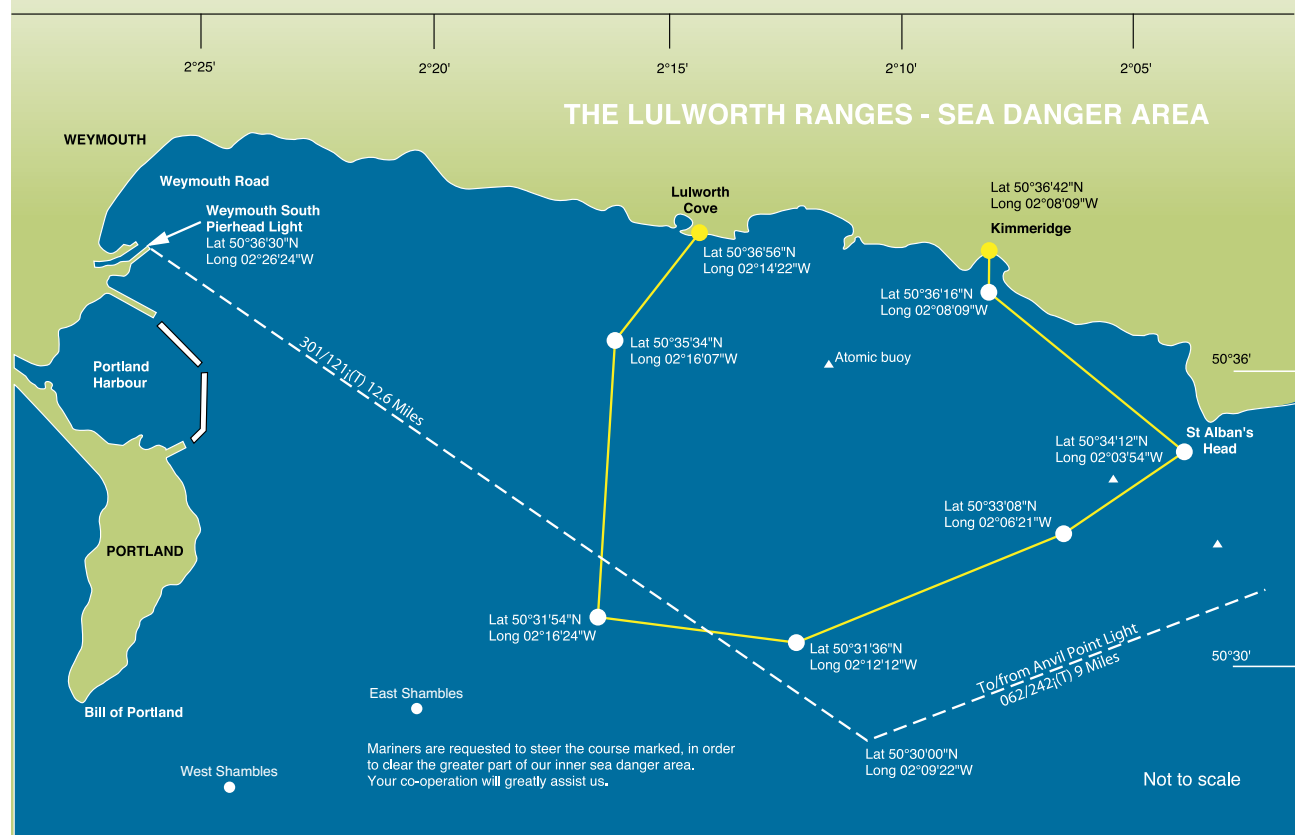
HM Forces train on the Lulworth Ranges and much of this training involves the firing of weapons. During firing times avoid the danger area identified on the chart below.

Normal firing times are:

- Monday-Thursday: 09.30 – 17.00
- Friday: 09.30 – 12.30

Exact details of the firing programmes, including weekend and night firing times, are displayed in the Harbour Office. The Lulworth Range Control listens on VHF Channel 8 but also, during firing, range safety boats are on station and listen on VHF Channels 8 and 16. When approaching the area, call range safety craft on VHF Channel 8 to get advice on safe direction and clearance.

For further information and weekend firing times, please contact Range Control on +44(0)1929 404712 during working hours and +44(0)1929 404819 outside of those hours.



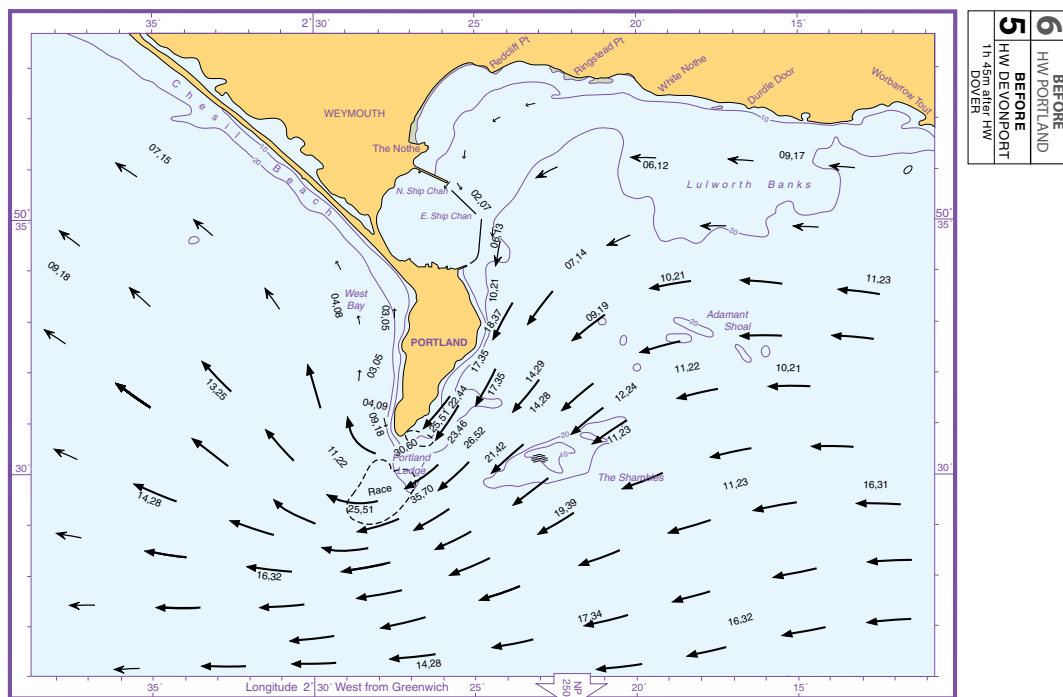


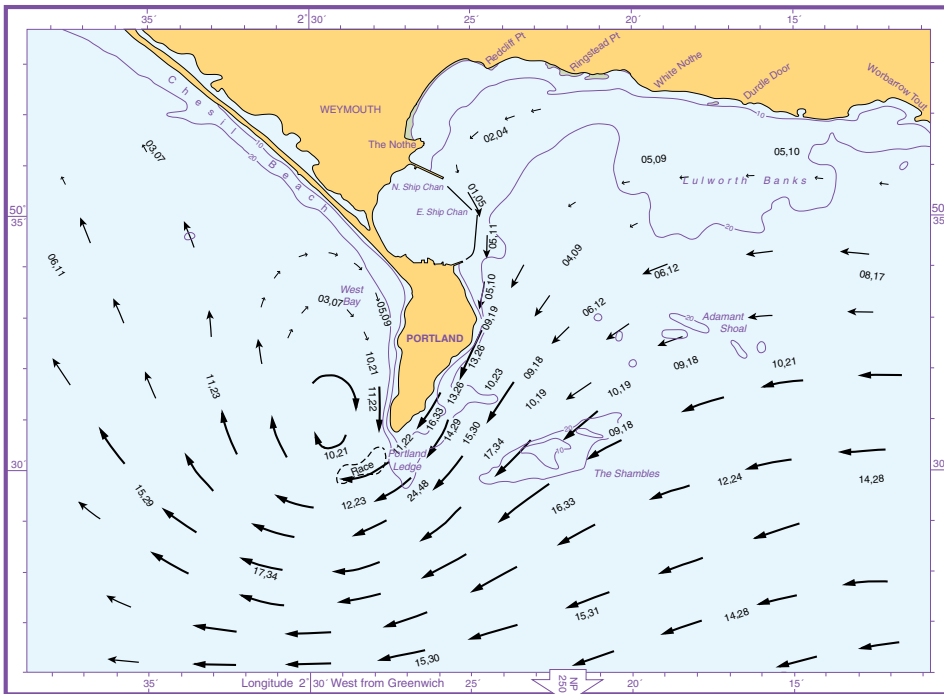
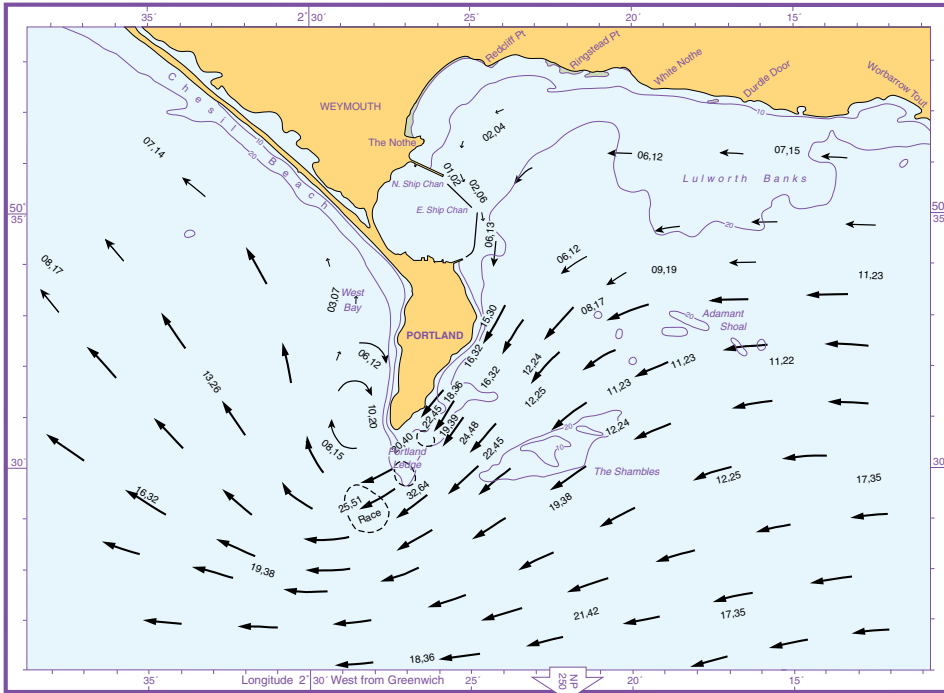
Tidal Streams

PORTLAND

The Tidal Stream Atlases show the rate and set of tidal streams in the local area. They are based on the time of High Water at Devonport, Plymouth and show the predicted tidal stream at hourly intervals. High Water Devonport is 1 hour before High Water Portland. The tide times for Portland

are given at page 42. The set is shown by arrows graded in weight and, where possible, in length to indicate the rate. The figures, against the arrows, give the mean rates in tenths of a knot for Neaps and Springs tides. Inshore eddies are rarely shown in detail due to the limitations of scale.





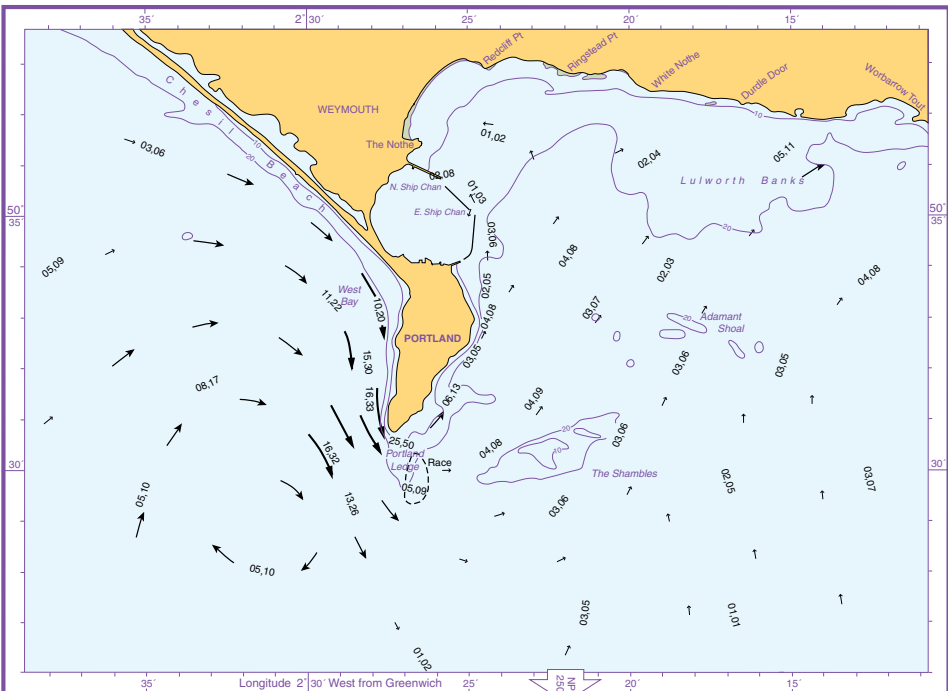
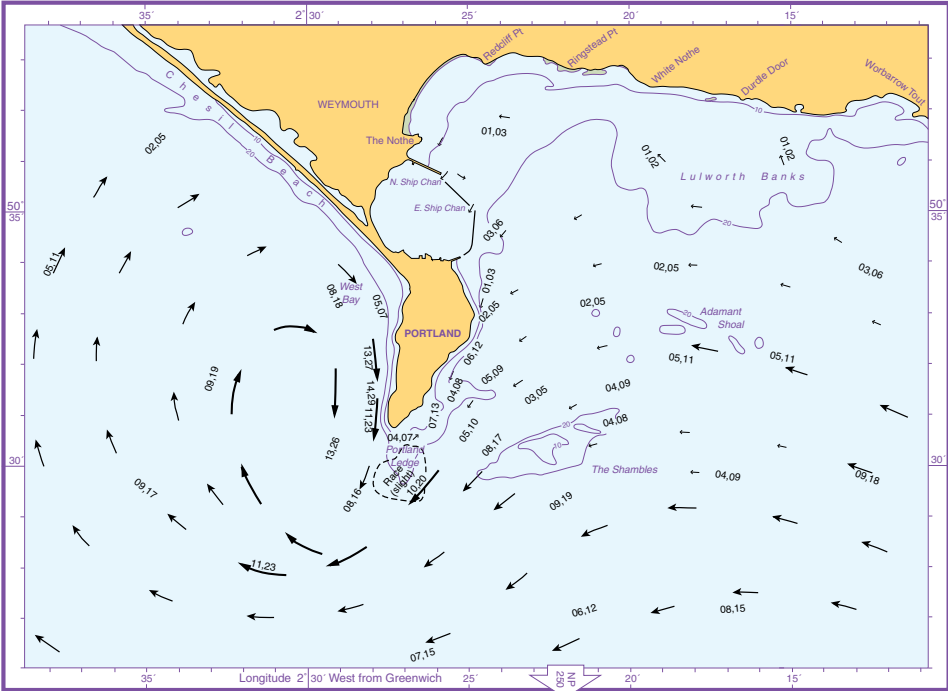
© Crown Copyright and/or database rights. Reproduced by permission of the Controller of Her Majesty's Stationery Office and the UK Hydrographic Office (www.ukhgov.uk).

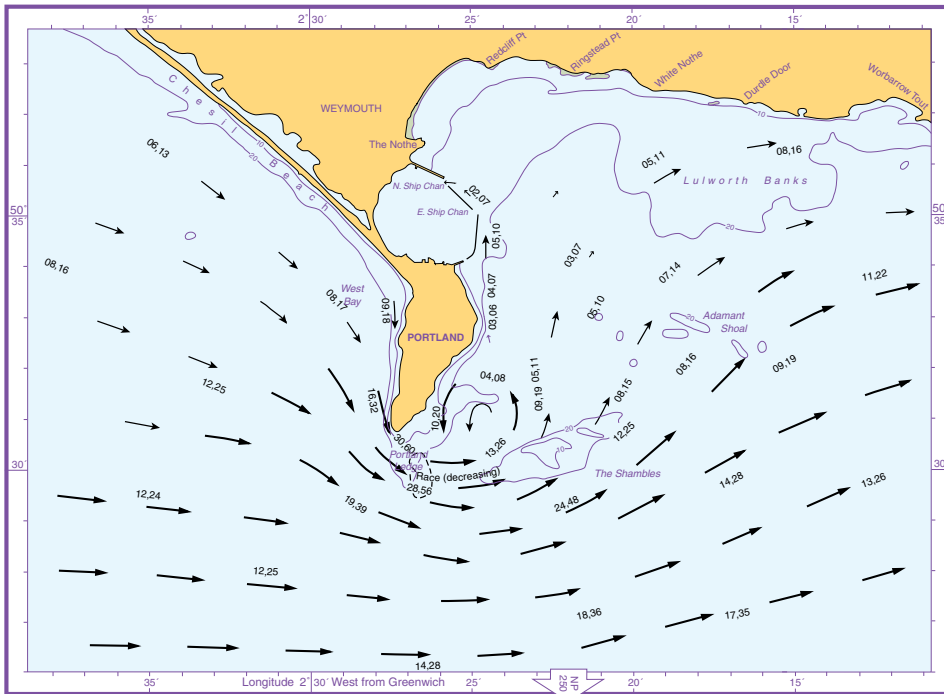
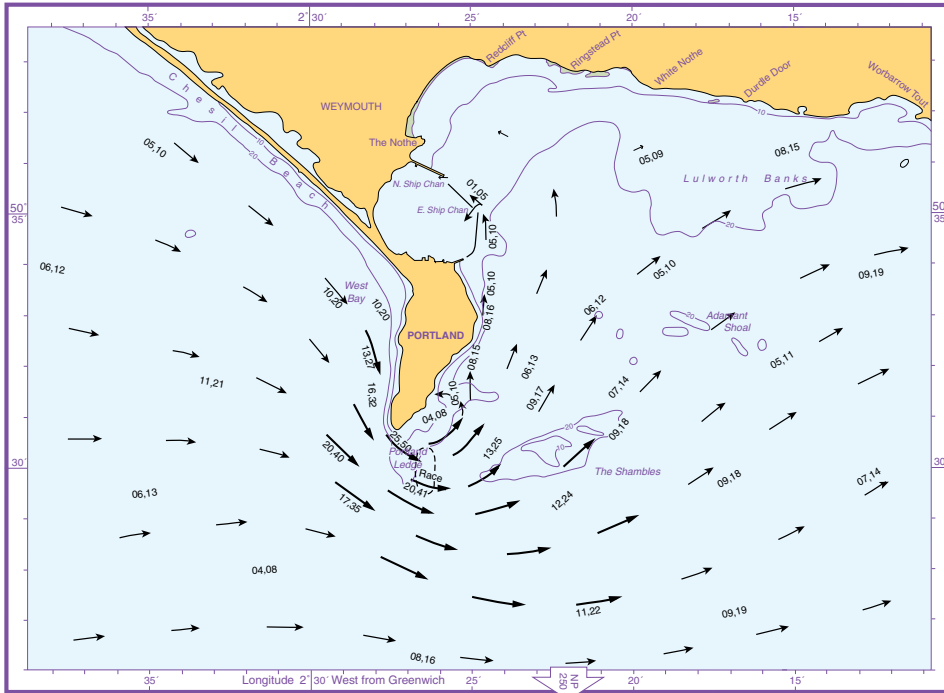
© Crown Copyright and/or database rights. Reproduced by permission of the Controller of Her Majesty's Stationery Office and the UK Hydrographic Office (www.ukhgo.gov.uk).

Chart No. 2826, 2827, 2828, 2829, 2830, 2831, 2832, 2833, 2834, 2835, 2836, 2837, 2838, 2839, 2840, 2841, 2842, 2843, 2844, 2845, 2846, 2847, 2848, 2849, 2850, 2851, 2852, 2853, 2854, 2855, 2856, 2857, 2858, 2859, 2860, 2861, 2862, 2863, 2864, 2865, 2866, 2867, 2868, 2869, 2870, 2871, 2872, 2873, 2874, 2875, 2876, 2877, 2878, 2879, 2880, 2881, 2882, 2883, 2884, 2885, 2886, 2887, 2888, 2889, 2890, 2891, 2892, 2893, 2894, 2895, 2896, 2897, 2898, 2899, 2900, 2901, 2902, 2903, 2904, 2905, 2906, 2907, 2908, 2909, 2910, 2911, 2912, 2913, 2914, 2915, 2916, 2917, 2918, 2919, 2920, 2921, 2922, 2923, 2924, 2925, 2926, 2927, 2928, 2929, 2930, 2931, 2932, 2933, 2934, 2935, 2936, 2937, 2938, 2939, 2940, 2941, 2942, 2943, 2944, 2945, 2946, 2947, 2948, 2949, 2950, 2951, 2952, 2953, 2954, 2955, 2956, 2957, 2958, 2959, 2960, 2961, 2962, 2963, 2964, 2965, 2966, 2967, 2968, 2969, 2970, 2971, 2972, 2973, 2974, 2975, 2976, 2977, 2978, 2979, 2980, 2981, 2982, 2983, 2984, 2985, 2986, 2987, 2988, 2989, 2990, 2991, 2992, 2993, 2994, 2995, 2996, 2997, 2998, 2999, 3000

3	BEFORE HW PORTLAND
2	BEFORE HW DEVONPORT 4h 45m after HW DOVER

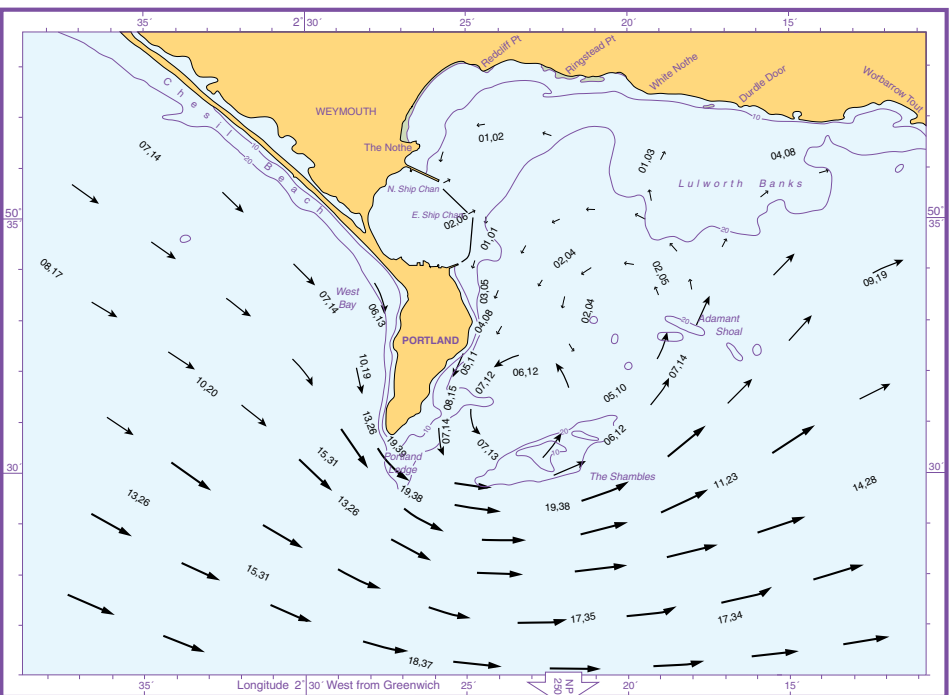
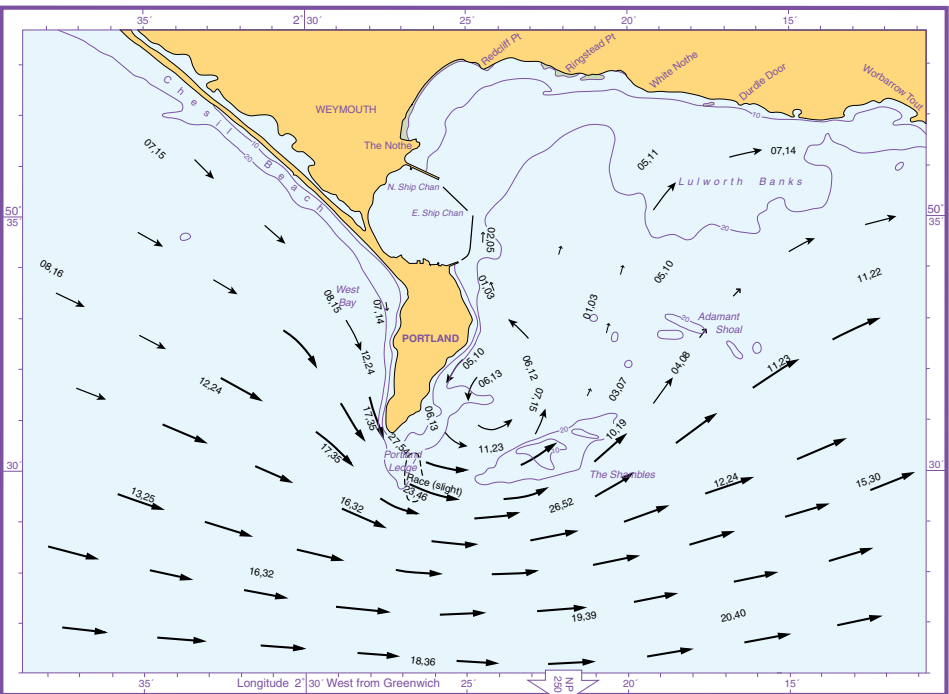
2	BEFORE HW PORTLAND
1	BEFORE HW DEVONPORT 5h 45m after HW DOVER

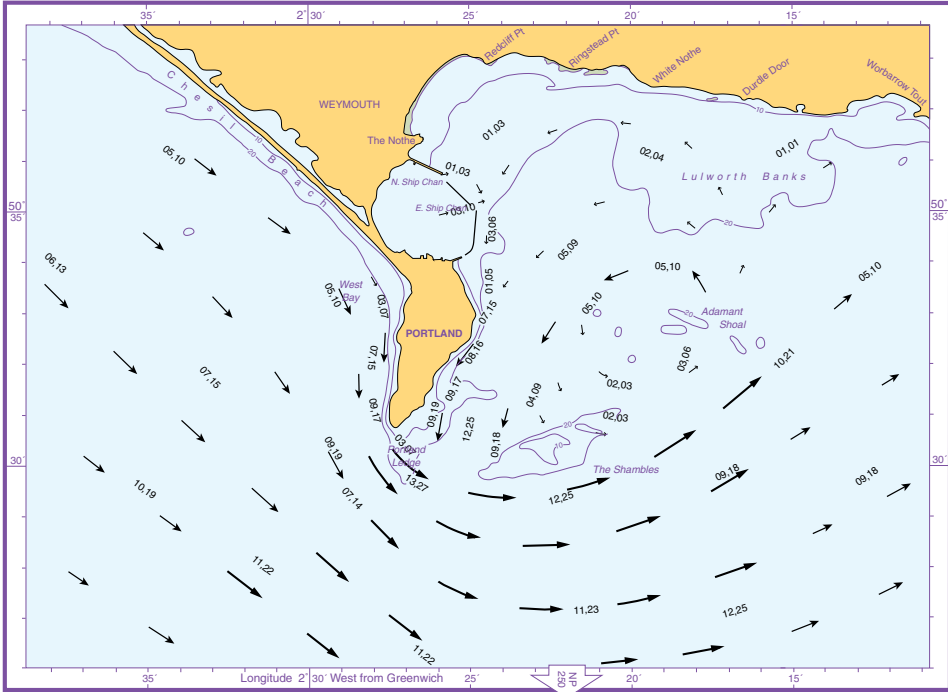




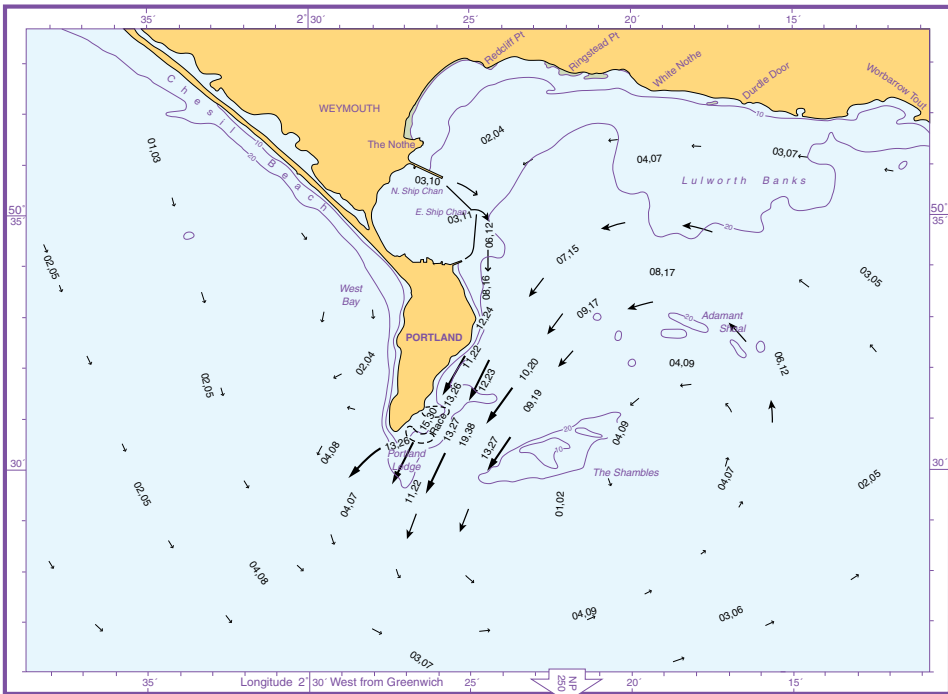
© Crown Copyright and/or database rights. Reproduced by permission of the Controller of Her Majesty's Stationery Office and the UK Hydrographic Office (www.ukhgov.uk).

© Crown Copyright and/or database rights. Reproduced by permission of the Controller of Her Majesty's Stationery Office and the UK Hydrographic Office (www.ukhgo.gov.uk).





3	AFTER HW PORTLAND
4	AFTER HW DEVONPORT 1h 40m before HW DOVER



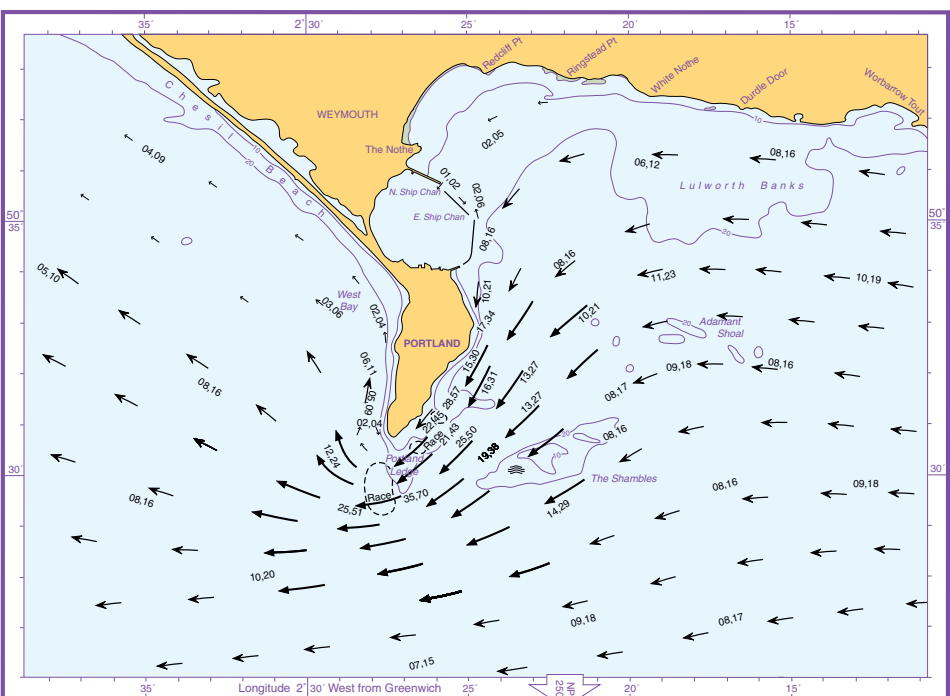
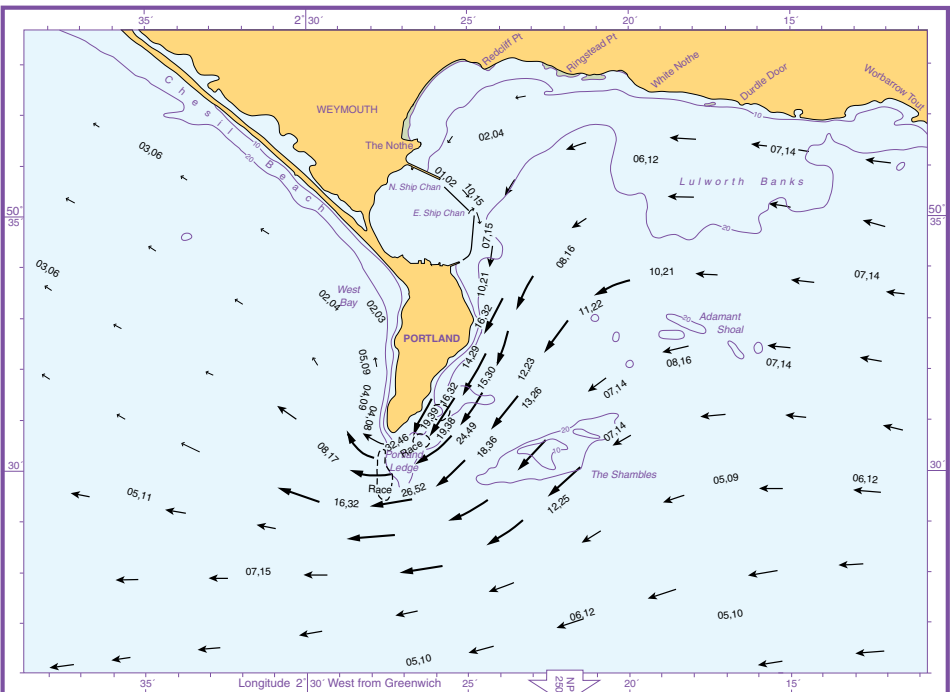
4	AFTER HW PORTLAND
5	AFTER HW DEVONPORT 0h 40m before HW DOVER

© Crown Copyright and/or database rights. Reproduced by permission of the Controller of Her Majesty's Stationery Office and the UK Hydrographic Office (www.ukhgov.uk).

© Crown Copyright and/or database rights. Reproduced by permission of the Controller of Her Majesty's Stationery Office and the UK Hydrographic Office (www.ukhgov.uk).

5	AFTER
6	AFTER
HW PORTLAND	
HW DEVONPORT	
0h 20m after HW	
DOVER	

6	AFTER
6	BEFORE
HW PORTLAND	
HW DEVONPORT	
0h 45m after HW	
DOVER	



Tide Tables - PORTLAND

LAT 50°34'N LONG 2°26'W
Time zone UT(GMT)

January

Time	m	Time	m
1 M	0532 2.1 1038 0.5 1805 2.0 2304 0.3	16 TU	0613 2.0 1109 0.5 1837 1.8 2323 0.4
2 TU O	0622 2.3 1131 0.4 1900 2.1 2353 0.2	17 W ●	0652 2.1 1152 0.4 1915 1.9
3 W	0712 2.4 1219 0.3 1957 2.2	18 TH	0001 0.4 0729 2.1 1229 0.4 1951 1.9
4 TH	0038 0.2 0802 2.4 1305 0.2 2053 2.2	19 F	0035 0.4 0805 2.1 1301 0.3 2024 1.8
5 F	0122 0.2 0853 2.4 1350 0.2 2137 2.1	20 SA	0107 0.4 0837 2.0 1333 0.3 2053 1.8
6 SA	0205 0.3 0939 2.2 1435 0.3 2216 2.0	21 SU	0140 0.4 0903 1.9 1406 0.3 2120 1.7
7 SU	0248 0.5 1021 2.1 1521 0.4 2255 1.8	22 M	0213 0.4 0930 1.8 1443 0.3 2149 1.7
8 M (0333 0.6 1101 1.9 1610 0.5 2338 1.6	23 TU	0248 0.4 1003 1.7 1523 0.4 2228 1.6
9 TU	0421 0.7 1147 1.7 1703 0.6	24 W)	0327 0.5 1046 1.6 1610 0.4 2317 1.5
10 W	0036 1.5 0520 0.9 1246 1.5 1804 0.7	25 TH	0419 0.6 1141 1.5 1708 0.5
11 TH	0155 1.4 0630 0.9 1409 1.4 1907 0.7	26 F	0022 1.4 0529 0.7 1258 1.4 1815 0.6
12 F	0303 1.5 0738 0.9 1520 1.4 2006 0.7	27 SA	0153 1.5 0645 0.7 1431 1.5 1933 0.6
13 SA	0400 1.6 0836 0.8 1620 1.5 2059 0.6	28 SU	0310 1.6 0812 0.7 1545 1.6 2056 0.5
14 SU	0449 1.8 0929 0.7 1711 1.6 2150 0.6	29 M	0415 1.8 0932 0.6 1653 1.7 2200 0.4
15 M	0533 1.9 1021 0.6 1756 1.7 2239 0.5	30 TU	0514 2.0 1031 0.4 1755 1.9 2253 0.3

31
W
○

February

Time	m	Time	m
1 TH	0702 2.3 1209 0.2 1957 2.2	16 F	0714 2.1 1213 0.3 1940 1.9
2 F	0026 0.1 0754 2.4 1252 0.1 2046 2.2	17 SA	0020 0.3 0753 2.1 1245 0.2 2016 1.9
3 SA	0107 0.1 0843 2.4 1333 0.1 2122 2.2	18 SU	0053 0.2 0827 2.1 1317 0.2 2043 1.9
4 SU	0147 0.2 0925 2.3 1414 0.1 2154 2.0	19 M	0126 0.2 0851 2.0 1350 0.2 2103 1.8
5 M	0225 0.3 0959 2.1 1453 0.3 2223 1.9	20 TU	0200 0.2 0913 1.9 1425 0.2 2129 1.8
6 TU	0302 0.4 1030 1.9 1532 0.4 2251 1.7	21 W	0234 0.2 0944 1.8 1502 0.2 2203 1.7
7 W (0338 0.6 1102 1.7 1610 0.6 2323 1.5	22 TH	0308 0.3 1024 1.7 1543 0.3 2247 1.6
8 TH	0414 0.7 1140 1.5 1650 0.7	23 F)	0349 0.4 1115 1.5 1634 0.5 2344 1.5
9 F	0007 1.4 0503 0.9 1233 1.3 1816 0.8	24 SA	0451 0.6 1227 1.4 1742 0.6
10 SA	0130 1.3 0706 0.9 1419 1.2 1934 0.8	25 SU	0115 1.4 0616 0.7 1418 1.3 1913 0.7
11 SU	0321 1.4 0812 0.8 1548 1.3 2033 0.7	26 M	0252 1.5 1130 0.6 1536 1.5 2055 0.6
12 M	0420 1.5 0907 0.7 1646 1.4 2126 0.6	27 TU	0401 1.7 0940 0.5 1644 1.6 2152 0.4
13 TU	0507 1.7 1000 0.6 1734 1.6 2217 0.5	28 W	0502 1.9 1026 0.4 1747 1.8 2242 0.3
14 W	0550 1.9 1049 0.4 1818 1.7 2304 0.4	29 TH	0632 2.0 1134 0.3 1900 1.8 2345 0.3

March

Time	m	Time	m
1 TH	0557 2.1 1112 0.2 1846 2.0 2328 0.1	16 F	0608 1.9 1109 0.3 1837 1.9 2321 0.3
2 F O	0650 2.3 1155 0.1 1939 2.2	17 SA ●	0652 2.0 1148 0.2 1920 2.0 2359 0.2
3 SA	0010 0.0 0741 2.4 1234 0.0 2024 2.2	18 SU	0010 0.0 0741 2.4 1222 0.1 2000 2.0
4 SU	0049 0.0 0827 2.4 1312 0.0 2059 2.2	19 M	0033 0.1 0812 2.1 1255 0.1 2030 2.0
5 M	0125 0.0 0903 2.3 1348 0.1 2128 2.1	20 TU	0108 0.1 0835 2.1 1329 0.1 2045 2.0
6 TU	0159 0.1 0931 2.1 1421 0.2 2149 1.9	21 W	0142 0.1 0855 2.0 1405 0.1 2110 1.9
7 W	0231 0.3 0957 1.9 1452 0.4 2211 1.7	22 TH	0217 0.2 0928 1.9 1441 0.2 2145 1.8
8 TH	0300 0.5 1025 1.7 1518 0.5 2239 1.5	23 F	0252 0.3 1010 1.7 1521 0.3 2228 1.7
9 F (0326 0.6 1059 1.4 1540 0.6 2315 1.4	24 SA)	0333 0.4 1102 1.5 1610 0.5 2323 1.5
10 SA	0358 0.7 1142 1.3 1617 0.7	25 SU	0433 0.6 1218 1.3 1720 0.7
11 SU	0003 1.3 0643 0.9 1247 1.2 1904 0.8	26 M	0054 1.4 0606 0.7 1414 1.3 1916 0.7
12 M	0140 1.3 0750 0.8 1500 1.2 2007 0.8	27 TU	0239 1.5 1117 0.5 1528 1.4 2043 0.6
13 TU	0339 1.4 0844 0.6 1616 1.3 2101 0.6	28 W	0348 1.6 0931 0.5 1632 1.6 2136 0.5
14 W	0435 1.6 0935 0.5 1707 1.5 2152 0.5	29 TH	0448 1.9 1011 0.3 1730 1.9 2224 0.3
15 TH	0522 1.8 1024 0.4 1753 1.7 2239 0.4	30 F	0542 2.1 1055 0.2 1823 2.0 2310 0.2

31
SA
○

April

Time	m	Time	m
1 SU	0721 2.3 1213 0.0 1954 2.2	16 M ●	0708 2.1 1155 0.1 1934 2.1
2 M	0026 0.0 0803 2.3 1246 0.0 2031 2.2	17 TU	0009 0.1 0748 2.2 1230 0.1 2008 2.1
3 TU	0100 0.1 0835 2.2 1318 0.1 2056 2.1	18 W	0046 0.1 0813 2.1 1307 0.1 2027 2.1
4 W	0132 0.1 0859 2.0 1349 0.2 2115 1.9	19 TH	0123 0.1 0839 2.1 1345 0.1 2055 2.0
5 TH	0202 0.3 0925 1.8 1417 0.4 2139 1.8	20 F	0201 0.2 0917 1.9 1424 0.2 2134 1.9
6 F	0230 0.4 0955 1.6 1439 0.5 2208 1.6	21 SA	0241 0.3 1003 1.7 1507 0.4 2221 1.8
7 SA	0254 0.5 1030 1.5 1501 0.6 2242 1.5	22 SU)	0328 0.4 1100 1.5 1600 0.6 2317 1.6
8 SU (0326 0.7 1112 1.3 1539 0.7 2326 1.4	23 M	0433 0.6 1228 1.4 1712 0.7
9 M	0422 0.8 1208 1.2 1644 0.8	24 TU	0047 1.5 0611 0.7 1404 1.4 1849 0.8
10 TU	0031 1.3 0726 0.8 1352 1.2 1938 0.8	25 W	0223 1.5 1059 0.5 1513 1.5 2013 0.7
11 W	0232 1.3 0819 0.6 1529 1.3 2032 0.7	26 TH	0329 1.7 0903 0.5 1612 1.7 2110 0.5
12 TH	0349 1.5 0907 0.5 1629 1.5 2122 0.6	27 F	0427 1.8 0946 0.3 1705 1.9 2200 0.4
13 F	0445 1.7 0954 0.4 1719 1.7 2208 0.4	28 SA	0521 2.0 1029 0.2 1755 2.0 2245 0.3
14 SA	0536 1.9 1038 0.3 1807 1.9 2252 0.3	29 SU	0610 2.1 1109 0.1 1841 2.1 2326 0.2
15 SU	0624 2.0 1118 0.2 1853 2.0 2332 0.2	30 M ○	0656 2.2 1145 0.1 1924 2.2

Shaded areas are British Summer Time - please add one hour to time shown.

LOW WATERS - Important note. Double low waters occur at Portland. The predictions are for the first low water. The second low water occurs from 3 to 4 hours later and may, at springs, on occasions be lower than the first.

May

Time	m	Time	m
1 TU	0000 0.2 0735 2.1 1217 0.1 1959 2.2	16 W	0715 2.1 1206 0.1 1938 2.2
2 W	0034 0.2 0804 2.1 1250 0.2 2024 2.1	17 TH	0025 0.2 0751 2.1 1247 0.1 2010 2.2
3 TH	0106 0.2 0830 1.9 1321 0.3 2048 1.9	18 F	0107 0.1 0829 2.1 1329 0.2 2048 2.2
4 F	0138 0.3 0859 1.8 1348 0.4 2116 1.8	19 SA	0150 0.2 0915 2.0 1412 0.3 2132 2.0
5 SA	0206 0.4 0931 1.6 1410 0.5 2146 1.7	20 SU	0235 0.3 1006 1.8 1459 0.4 2221 1.9
6 SU	0231 0.5 1007 1.5 1435 0.6 2220 1.5	21 M	0328 0.4 1105 1.6 1554 0.6 2316 1.7
7 M	0306 0.6 1048 1.4 1514 0.7 2301 1.4	22 TU	0431 0.6 1222 1.5 1658 0.7
8 TU	0359 0.7 1140 1.3 1617 0.8 2357 1.4	23 W	0030 1.6 0545 0.6 1342 1.5 1810 0.8
9 W	0658 0.7 1258 1.2 1733 0.8	24 TH	0156 1.6 0707 0.6 1448 1.5 1925 0.8
10 TH	0124 1.4 0750 0.6 1436 1.3 1952 0.8	25 F	0302 1.6 0819 0.5 1544 1.7 2031 0.7
11 F	0256 1.5 0836 0.5 1544 1.5 2043 0.6	26 SA	0400 1.7 0909 0.4 1637 1.8 2126 0.6
12 SA	0400 1.6 0919 0.4 1639 1.7 2130 0.5	27 SU	0453 1.8 0954 0.4 1726 2.0 2214 0.4
13 SU	0457 1.8 1001 0.3 1731 1.9 2216 0.4	28 M	0543 1.9 1036 0.3 1811 2.1 2256 0.4
14 M	0548 2.0 1043 0.2 1818 2.0 2300 0.3	29 TU	0628 2.0 1114 0.2 1853 2.1 2335 0.3
15 TU	0634 2.1 1125 0.1 1901 2.2 2344 0.2	30 W	0706 2.0 1150 0.2 1927 2.1
		31 TH	0011 0.3 0737 1.9 1225 0.3 1957 2.1

June

Time	m	Time	m
1 F	0047 0.3 0807 1.9 1258 0.3 2027 2.0	16 SA	0056 0.2 0831 2.1 1317 0.2 2046 2.3
2 SA	0120 0.4 0839 1.8 1327 0.4 2058 1.8	17 SU	0143 0.2 0925 2.0 1402 0.2 2133 2.2
3 SU	0150 0.4 0913 1.6 1353 0.5 2131 1.7	18 M	0230 0.3 1013 1.9 1449 0.4 2220 2.1
4 M	0219 0.5 0949 1.5 1422 0.5 2203 1.6	19 TU	0321 0.3 1102 1.7 1540 0.5 2308 1.9
5 TU	0254 0.5 1027 1.4 1500 0.6 2240 1.5	20 W	0415 0.5 1158 1.6 1634 0.6
6 W	0342 0.6 1113 1.3 1555 0.7 2327 1.5	21 TH	0003 1.7 0513 0.5 1306 1.5 1734 0.7
7 TH	0442 0.6 1212 1.3 1702 0.7	22 F	0113 1.6 0615 0.6 1413 1.5 1838 0.8
8 F	0028 1.4 0551 0.6 1335 1.4 1813 0.7	23 SA	0224 1.5 0720 0.6 1512 1.6 1945 0.8
9 SA	0150 1.5 0711 0.5 1453 1.5 1930 0.7	24 SU	0326 1.6 0820 0.6 1606 1.7 2045 0.7
10 SU	0305 1.6 0825 0.4 1553 1.7 2041 0.6	25 M	0423 1.6 0912 0.5 1657 1.8 2138 0.6
11 M	0408 1.7 0918 0.3 1648 1.8 2138 0.5	26 TU	0515 1.7 1000 0.4 1743 1.9 2228 0.5
12 TU	0505 1.9 1009 0.3 1739 2.0 2231 0.4	27 W	0601 1.8 1045 0.4 1825 2.0 2314 0.4
13 W	0558 2.0 1059 0.2 1826 2.2 2323 0.3	28 TH	0642 1.8 1128 0.3 1902 2.1 2356 0.4
14 TH	0648 2.1 1146 0.1 1912 2.3	29 F	0717 1.8 1207 0.3 1937 2.1
15 F	0010 0.2 0738 2.1 1232 0.1 1958 2.3	30 SA	0034 0.3 0751 1.8 1242 0.3 2011 2.0

July

Time	m	Time	m
1 SU	0109 0.4 0825 1.8 1314 0.4 2045 1.9	16 M	0133 0.1 0926 2.1 1349 0.2 2127 2.3
2 M	0140 0.4 0859 1.7 1343 0.4 2117 1.8	17 TU	0218 0.2 1006 2.0 1433 0.3 2209 2.2
3 TU	0210 0.4 0931 1.6 1414 0.5 2147 1.7	18 W	0303 0.2 1044 1.9 1518 0.4 2249 2.0
4 W	0243 0.4 1004 1.5 1450 0.5 2217 1.6	19 TH	0349 0.4 1125 1.7 1604 0.5 2331 1.8
5 TH	0324 0.4 1043 1.5 1534 0.6 2257 1.6	20 F	0438 0.5 1216 1.5 1655 0.7
6 F	0414 0.5 1132 1.4 1631 0.6 2349 1.5	21 SA	0020 1.6 0533 0.6 1325 1.4 1758 0.8
7 SA	0512 0.5 1237 1.4 1735 0.7	22 SU	0133 1.4 0636 0.7 1436 1.4 1907 0.8
8 SU	0055 1.5 0617 0.5 1357 1.5 1844 0.7	23 M	0250 1.4 0740 0.7 1537 1.5 2012 0.8
9 M	0215 1.5 0727 0.5 1508 1.6 1957 0.6	24 TU	0356 1.4 0838 0.6 1630 1.7 2110 0.7
10 TU	0328 1.6 0840 0.4 1610 1.8 2109 0.5	25 W	0451 1.5 0931 0.6 1718 1.8 2204 0.6
11 W	0434 1.7 0943 0.3 1708 2.0 2213 0.4	26 TH	0539 1.7 1021 0.5 1801 1.9 2256 0.5
12 TH	0536 1.9 1040 0.3 1802 2.1 2309 0.3	27 F	0622 1.7 1108 0.4 1841 2.0 2342 0.4
13 F	0633 2.0 1132 0.2 1853 2.3	28 SA	0702 1.8 1151 0.3 1919 2.1
14 SA	0000 0.2 0731 2.1 1219 0.1 1946 2.3	29 SU	0022 0.3 0739 1.8 1227 0.3 1957 2.1
15 SU	0047 0.1 0836 2.1 1305 0.1 2039 2.4	30 M	0057 0.3 0813 1.8 1300 0.3 2032 2.0
		31 TU	0126 0.3 0845 1.8 1331 0.3 2103 1.9

August

Time	m	Time	m
1 W	0155 0.3 0913 1.7 1403 0.3 2127 1.8	16 TH	0238 0.2 1017 2.0 1450 0.3 2222 2.0
2 TH	0227 0.3 0939 1.6 1436 0.4 2152 1.7	17 F	0316 0.3 1046 1.8 1529 0.5 2253 1.8
3 F	0302 0.3 1011 1.6 1512 0.4 2227 1.6	18 SA	0355 0.5 1116 1.6 1610 0.7 2328 1.5
4 SA	0344 0.4 1054 1.5 1557 0.5 2314 1.5	19 SU	0438 0.7 1158 1.4 1708 0.8
5 SU	0436 0.4 1151 1.4 1659 0.6	20 M	0016 1.3 0546 0.8 1334 1.3 1839 0.9
6 M	0016 1.5 0540 0.5 1309 1.4 1810 0.7	21 TU	0204 1.2 0709 0.8 1511 1.4 1949 0.8
7 TU	0142 1.4 0652 0.6 1438 1.5 1930 0.7	22 W	0334 1.3 0812 0.8 1608 1.6 2048 0.7
8 W	0309 1.5 0819 0.5 1547 1.7 2102 0.6	23 TH	0432 1.4 0906 0.7 1655 1.7 2141 0.6
9 TH	0420 1.6 0932 0.4 1649 1.9 2208 0.5	24 F	0519 1.6 0958 0.5 1738 1.9 2233 0.4
10 F	0524 1.8 1029 0.3 1746 2.1 2302 0.3	25 SA	0602 1.7 1047 0.4 1819 2.0 2320 0.3
11 SA	0624 2.0 1120 0.2 1839 2.3 2350 0.2	26 SU	0643 1.9 1131 0.3 1859 2.1
12 SU	0725 2.1 1206 0.1 1932 2.4	27 M	0002 0.2 0722 1.9 1209 0.3 1940 2.1
13 M	0034 0.1 0828 2.2 1250 0.1 2025 2.4	28 TU	0037 0.2 0759 2.0 1242 0.2 2016 2.1
14 TU	0117 0.0 0911 2.0 1331 0.1 2111 2.4	29 W	0106 0.2 0829 1.9 1313 0.3 2046 2.0
15 W	0158 0.1 0945 2.1 1411 0.2 2149 2.2	30 TH	0134 0.2 0851 1.9 1344 0.3 2104 1.9
		31 F	0205 0.2 0911 1.8 1416 0.3 2126 1.8

LOW WATERS - Important note. Double low waters occur at Portland. The predictions are for the first low water. The second low water occurs from 3 to 4 hours later and may, at springs, on occasions be lower than the first.

September

Time	m	Time	m
1 SA	0238 0.3 0941 1.7 1449 0.4 2201 1.7	16 SU	0307 0.6 1027 1.6 1524 0.7 2248 1.5
2 SU	0313 0.4 1022 1.6 1526 0.5 2247 1.6	17 M	0328 0.7 1104 1.5 1559 0.8 2330 1.3
3 M C	0359 0.5 1115 1.5 1623 0.6 2348 1.4	18 TU	0353 0.9 1153 1.3 1822 0.9
4 TU	0505 0.6 1230 1.4 1743 0.7	19 W	0334 1.2 0643 1.0 1428 1.3 1928 0.9
5 W	0132 1.3 0628 0.7 1421 1.5 2233 0.7	20 TH	0320 1.2 0747 0.9 1546 1.5 2024 0.7
6 TH	0305 1.4 0824 0.7 1534 1.7 2117 0.6	21 F	0415 1.4 0841 0.8 1630 1.7 2115 0.6
7 F	0415 1.6 0925 0.5 1636 1.9 2204 0.4	22 SA	0457 1.6 0932 0.6 1711 1.8 2205 0.4
8 SA	0516 1.8 1017 0.4 1732 2.1 2251 0.3	23 SU	0537 1.8 1020 0.5 1753 2.0 2252 0.3
9 SU ●	0614 2.0 1105 0.2 1825 2.3 2335 0.1	24 M	0618 1.9 1105 0.4 1835 2.1 2334 0.2
10 M	0708 2.2 1150 0.1 1916 2.4	25 TU ○	0658 2.0 1144 0.3 1916 2.2
11 TU	0017 0.0 0759 2.3 1231 0.1 2005 2.4	26 W	0009 0.2 0737 2.1 1218 0.3 1955 2.2
12 W	0056 0.0 0841 2.3 1309 0.1 2047 2.4	27 TH	0039 0.2 0807 2.1 1250 0.2 2023 2.1
13 TH	0132 0.1 0915 2.2 1345 0.2 2121 2.2	28 F	0109 0.2 0824 2.0 1323 0.2 2038 2.0
14 F	0206 0.2 0940 2.0 1419 0.3 2147 2.0	29 SA	0141 0.3 0845 2.0 1356 0.3 2104 1.9
15 SA	0238 0.4 1000 1.8 1452 0.5 2214 1.7	30 SU	0214 0.3 0917 1.9 1429 0.4 2142 1.7

October

Time	m	Time	m
1 M	0248 0.4 0959 1.7 1507 0.5 2231 1.6	16 TU D	0241 0.8 1029 1.5 1517 0.8 2300 1.4
2 TU C	0330 0.6 1052 1.6 1603 0.7 2337 1.4	17 W	0305 0.9 1115 1.4 1803 0.9 2357 1.2
3 W	0440 0.8 1208 1.5 2037 0.8	18 TH	0404 1.0 1224 1.3 1904 0.9
4 TH	0139 1.3 0620 0.9 1409 1.5 2221 0.7	19 F	0145 1.2 0720 1.0 1437 1.4 1957 0.7
5 F	0303 1.5 0820 0.8 1522 1.7 2110 0.6	20 SA	0343 1.4 0814 0.9 1547 1.6 2047 0.6
6 SA	0407 1.7 0912 0.6 1622 1.9 2149 0.4	21 SU	0422 1.6 0903 0.7 1635 1.8 2134 0.5
7 SU	0503 1.9 1000 0.4 1716 2.1 2232 0.3	22 M	0504 1.8 0949 0.6 1720 1.9 2219 0.4
8 M	0555 2.1 1047 0.3 1808 2.3 2315 0.1	23 TU	0546 2.0 1034 0.5 1805 2.1 2301 0.3
9 TU ●	0643 2.3 1130 0.2 1855 2.4 2355 0.1	24 W ○	0628 2.1 1113 0.4 1848 2.1 2336 0.3
10 W	0728 2.3 1209 0.1 1939 2.4	25 TH	0707 2.2 1150 0.3 1927 2.2
11 TH	0030 0.1 0808 2.3 1243 0.2 2017 2.3	26 F	0009 0.2 0737 2.2 1225 0.3 1954 2.2
12 F	0102 0.2 0838 2.2 1317 0.2 2046 2.1	27 SA	0044 0.2 0756 2.2 1301 0.3 2016 2.1
13 SA	0133 0.3 0859 2.1 1349 0.4 2112 1.9	28 SU	0119 0.3 0824 2.1 1338 0.3 2049 2.0
14 SU	0202 0.5 0922 1.9 1420 0.5 2142 1.7	29 M	0155 0.4 0902 2.0 1416 0.4 2133 1.8
15 M	0226 0.6 0953 1.7 1449 0.7 2217 1.5	30 TU	0234 0.5 0948 1.9 1502 0.5 2227 1.6
31 W C	0322 0.7 1044 1.7 1604 0.7 2340 1.4		

November

Time	m	Time	m
1 TH	0432 0.9 1200 1.5 2027 0.8	16 F	0334 1.0 1142 1.4 1837 0.8
2 F	0133 1.4 0607 0.9 1352 1.6 2222 0.7	17 SA	0040 1.3 0500 1.0 1310 1.4 1929 0.7
3 SA	0249 1.6 0750 0.9 1504 1.7 2040 0.6	18 SU	0221 1.4 0741 1.0 1443 1.5 2017 0.6
4 SU	0349 1.8 0848 0.7 1602 1.9 2123 0.5	19 M	0330 1.6 0829 0.8 1546 1.7 2101 0.5
5 M	0441 2.0 0937 0.6 1655 2.0 2207 0.3	20 TU	0421 1.8 0913 0.7 1639 1.8 2142 0.4
6 TU	0530 2.1 1024 0.4 1746 2.2 2249 0.3	21 W	0509 2.0 0955 0.6 1730 2.0 2222 0.4
7 W ●	0615 2.3 1106 0.3 1832 2.2 2327 0.2	22 TH	0553 2.1 1038 0.5 1815 2.1 2302 0.3
8 TH	0658 2.3 1143 0.3 1913 2.2	23 F ○	0632 2.2 1120 0.4 1855 2.1 2342 0.3
9 F	0000 0.2 0734 2.3 1217 0.3 1947 2.2	24 SA	0705 2.3 1202 0.3 1928 2.2
10 SA	0032 0.3 0802 2.2 1251 0.3 2015 2.0	25 SU	0022 0.3 0736 2.3 1243 0.3 2003 2.1
11 SU	0104 0.4 0827 2.1 1325 0.4 2045 1.9	26 M	0103 0.3 0813 2.2 1326 0.3 2044 2.0
12 M	0134 0.5 0856 1.9 1357 0.5 2118 1.7	27 TU	0145 0.4 0856 2.1 1411 0.4 2134 1.9
13 TU	0157 0.6 0929 1.8 1426 0.7 2154 1.6	28 W	0229 0.5 0946 2.0 1502 0.5 2230 1.7
14 W	0215 0.7 1005 1.6 1455 0.8 2236 1.4	29 TH	0320 0.7 1042 1.8 1602 0.6 2339 1.6
15 TH D	0243 0.8 1047 1.5 1542 0.9 2326 1.3	30 F C	0423 0.8 1149 1.7 1712 0.7

December

Time	m	Time	m
1 SA	0107 1.5 0535 0.9 1320 1.6 1830 0.7	16 SU	0422 0.9 1201 1.4 1722 0.7
2 SU	0220 1.6 0654 0.9 1433 1.7 1952 0.6	17 M	0101 1.4 0537 0.9 1324 1.4 1839 0.7
3 M	0319 1.7 0810 0.8 1533 1.8 2047 0.6	18 TU	0226 1.5 0656 0.9 1445 1.5 2005 0.6
4 TU	0412 1.9 0907 0.7 1628 1.9 2134 0.5	19 W	0329 1.7 0814 0.8 1548 1.7 2054 0.5
5 W	0502 2.0 0955 0.6 1721 1.9 2216 0.4	20 TH	0423 1.8 0912 0.7 1646 1.8 2143 0.4
6 TH	0548 2.1 1039 0.5 1808 2.0 2256 0.4	21 F	0513 2.0 1005 0.6 1740 1.9 2232 0.4
7 F ●	0630 2.2 1118 0.5 1849 2.0 2333 0.4	22 SA ○	0558 2.2 1057 0.5 1828 2.0 2321 0.3
8 SA	0706 2.2 1155 0.4 1924 2.0	23 SU	0641 2.3 1146 0.4 1914 2.1
9 SU	0009 0.4 0738 2.2 1232 0.4 1955 2.0	24 M	0008 0.3 0725 2.3 1233 0.3 2002 2.1
10 M	0043 0.4 0808 2.1 1308 0.5 2027 1.9	25 TU	0053 0.3 0809 2.3 1319 0.3 2051 2.1
11 TU	0115 0.5 0840 2.0 1342 0.5 2101 1.7	26 W	0138 0.3 0857 2.3 1407 0.3 2141 2.0
12 W	0142 0.6 0914 1.8 1414 0.6 2136 1.6	27 TH	0223 0.4 0947 2.2 1456 0.4 2229 1.9
13 TH	0205 0.7 0948 1.7 1443 0.6 2213 1.5	28 F	0311 0.5 1037 2.0 1547 0.4 2321 1.7
14 F	0235 0.7 1023 1.6 1523 0.7 2254 1.4	29 SA C	0402 0.7 1130 1.8 1642 0.5
15 SA D	0318 0.8 1105 1.5 1617 0.7 2346 1.4	30 SU	0024 1.6 0500 0.8 1236 1.7 1742 0.6
31 M			0136 1.5 0605 0.9 1351 1.6 1849 0.7

LOW WATERS - Important note. Double low waters occur at Portland. The predictions are for the first low water. The second low water occurs from 3 to 4 hours later and may, at springs, on occasions be lower than the first.

January 2019			February 2019			March 2019			April 2019						
Time	m	Time	m	Time	m	Time	m	Time	m	Time	m				
1 TU	0242 1.6 0718 0.8 1458 1.6 1956 0.7	16 W	0106 1.4 0603 0.8 1335 1.4 1847 0.6	1 F	0408 1.6 0856 0.8 1634 1.5 2114 0.7	15 F	0138 1.4 0639 0.7 1431 1.4 1928 0.6	1 F	0232 1.3 0727 0.9 1510 1.2 1948 0.8	16 SA	0059 1.4 0615 0.7 1420 1.3 1913 0.7	1 M	0413 1.5 0855 0.6 1643 1.5 2111 0.6	16 TU	0344 1.7 0926 0.4 1630 1.7 2134 0.4
2 W	0340 1.7 0827 0.8 1559 1.6 2053 0.6	17 TH	0232 1.5 0717 0.7 1500 1.5 2002 0.6	2 SA	0500 1.7 0951 0.7 1727 1.6 2206 0.6	16 SA	0309 1.5 0820 0.7 1551 1.5 2102 0.5	2 SA	0346 1.4 0831 0.8 1616 1.3 2047 0.7	17 SU	0251 1.5 1114 0.6 1540 1.4 2056 0.6	2 TU	0458 1.7 0945 0.4 1726 1.6 2201 0.5	17 W	0444 1.9 1008 0.2 1728 1.9 2222 0.3
3 TH	0433 1.8 0923 0.7 1656 1.7 2143 0.6	18 F	0339 1.7 0835 0.7 1610 1.6 2114 0.5	3 SU	0546 1.9 1041 0.5 1813 1.7 2255 0.5	17 SU	0417 1.7 0941 0.5 1659 1.7 2205 0.4	3 SU	0440 1.6 0925 0.6 1708 1.5 2141 0.6	18 M	0401 1.7 0939 0.5 1647 1.6 2153 0.4	3 W	0539 1.8 1033 0.3 1807 1.8 2249 0.4	18 TH	0540 2.1 1051 0.1 1821 2.1 2308 0.1
4 F	0523 1.9 1013 0.6 1746 1.8 2229 0.5	19 SA	0440 1.9 0944 0.6 1714 1.8 2214 0.4	4 M	0628 2.0 1126 0.4 1854 1.8 2338 0.4	18 M	0517 2.0 1037 0.4 1802 1.9 2257 0.3	4 M	0525 1.8 1015 0.5 1753 1.7 2231 0.4	19 TU	0502 1.9 1026 0.3 1749 1.9 2242 0.2	4 TH	0621 2.0 1117 0.2 1847 1.9 2330 0.3	19 F	0631 2.2 1133 0.0 1910 2.2 2350 0.1
5 SA	0606 2.0 1059 0.5 1830 1.9 2313 0.4	20 SU	0535 2.1 1044 0.5 1812 1.9 2308 0.3	5 TU	0707 2.1 1208 0.3 1932 1.9	19 TU	0612 2.2 1127 0.2 1902 2.0 2345 0.1	5 TU	0608 1.9 1103 0.3 1835 1.8 2317 0.3	20 W	0558 2.1 1112 0.1 1846 2.1 2329 0.1	5 F	0702 2.0 1155 0.2 1926 2.0	20 SA	0720 2.3 1212 0.0 1954 2.3
6 SU	0646 2.1 1141 0.4 1909 1.9 2353 0.4	21 M	0625 2.2 1137 0.3 1908 2.0 2358 0.2	6 W	0016 0.3 0744 2.1 1244 0.3 2006 1.9	20 W	0705 2.3 1213 0.1 2003 2.2	6 W	0648 2.0 1146 0.2 1914 1.9 2357 0.2	21 TH	0651 2.3 1155 0.0 1940 2.2	6 SA	0005 0.2 0741 2.1 1226 0.1 2001 2.0	21 SU	0027 0.0 0804 2.3 1246 0.0 2032 2.2
7 M	0721 2.1 1221 0.4 1943 1.9	22 TU	0715 2.3 1225 0.2 2005 2.1	7 TH	0050 0.3 0819 2.0 1316 0.3 2037 1.9	21 TH	0029 0.0 0758 2.4 1255 0.0 2050 2.3	7 TH	0727 2.1 1224 0.2 1950 2.0	22 F	0011 0.0 0743 2.4 1235 -0.1 2024 2.3	7 SU	0036 0.2 0813 2.0 1254 0.1 2026 2.0	22 M	0102 0.1 0838 2.2 1320 0.1 2100 2.1
8 TU	0030 0.4 0755 2.1 1258 0.4 2016 1.9	23 W	0043 0.2 0807 2.4 1310 0.1 2059 2.2	8 F	0120 0.3 0850 2.0 1344 0.3 2104 1.8	22 F	0111 0.0 0848 2.4 1337 0.0 2125 2.2	8 F	0031 0.2 0803 2.1 1254 0.2 2022 1.9	23 SA	0051 0.0 0829 2.4 1313 -0.1 2101 2.3	8 M	0106 0.2 0831 2.0 1324 0.2 2038 1.9	23 TU	0135 0.2 0905 2.0 1352 0.3 2122 1.9
9 W	0103 0.4 0829 2.0 1332 0.4 2049 1.8	24 TH	0127 0.1 0857 2.4 1355 0.1 2140 2.1	9 SA	0148 0.3 0916 1.8 1411 0.3 2127 1.7	23 SA	0151 0.0 0929 2.3 1416 0.1 2157 2.1	9 SA	0100 0.2 0835 2.0 1321 0.2 2047 1.9	24 SU	0127 0.0 0907 2.3 1349 0.0 2131 2.1	9 TU	0137 0.2 0849 1.9 1356 0.2 2101 1.9	24 W	0209 0.3 0934 1.8 1423 0.4 2149 1.8
10 TH	0133 0.5 0903 1.9 1401 0.4 2121 1.7	25 F	0210 0.2 0943 2.3 1439 0.2 2217 2.0	10 SU	0216 0.3 0936 1.7 1441 0.3 2149 1.6	24 SU	0229 0.2 1004 2.1 1455 0.2 2226 1.9	10 SU	0128 0.2 0856 1.9 1348 0.2 2102 1.8	25 M	0202 0.1 0936 2.1 1423 0.2 2153 1.9	10 W	0208 0.2 0921 1.8 1430 0.3 2136 1.8	25 TH	0242 0.5 1008 1.6 1450 0.6 2222 1.6
11 F	0200 0.5 0933 1.8 1430 0.5 2150 1.6	26 SA	0253 0.3 1024 2.1 1524 0.3 2255 1.8	11 M	0245 0.4 1002 1.7 1516 0.3 2222 1.6	25 M	0305 0.3 1035 1.9 1532 0.4 2253 1.7	11 M	0157 0.2 0911 1.8 1418 0.2 2122 1.7	26 TU	0235 0.3 1002 1.8 1455 0.4 2215 1.7	11 TH	0242 0.3 1004 1.6 1507 0.4 2221 1.6	26 F	0316 0.7 1049 1.4 1512 0.7 2303 1.4
12 SA	0229 0.5 1000 1.7 1503 0.5 2221 1.5	27 SU	0336 0.5 1105 1.9 1610 0.4 2338 1.6	12 TU	0318 0.4 1041 1.6 1559 0.4 2308 1.5	26 TU	0342 0.5 1108 1.6 1610 0.6 2326 1.5	12 TU	0226 0.3 0938 1.7 1450 0.3 2154 1.7	27 W	0308 0.5 1034 1.6 1524 0.6 2247 1.5	12 F	0324 0.4 1059 1.4 1600 0.6 2320 1.5	27 SA	0359 0.8 1139 1.2 1552 0.9 2356 1.3
13 SU	0303 0.6 1031 1.6 1545 0.5 2259 1.5	28 M	0422 0.6 1151 1.7 1659 0.6	13 W	0406 0.5 1134 1.4 1656 0.5	27 W	0422 0.7 1150 1.4 1655 0.7	13 W	0255 0.3 1017 1.6 1526 0.4 2238 1.6	28 TH	0341 0.7 1113 1.4 1549 0.7 2328 1.4	13 SA	0434 0.6 1216 1.3 1719 0.7	28 SU	0630 0.8 1257 1.1 1843 0.9
14 M	0348 0.6 1115 1.5 1637 0.5 2352 1.4	29 TU	0036 1.5 0518 0.8 1257 1.5 1759 0.7	14 TH	0008 1.4 0520 0.6 1245 1.4 1806 0.6	28 TH	0016 1.3 0543 0.9 1318 1.2 1831 0.8	14 TH	0334 0.4 1109 1.4 1619 0.5 2335 1.4	29 F	0428 0.8 1207 1.2 1625 0.9	14 SU	0045 1.4 0610 0.7 1414 1.3 1909 0.7	29 M	0131 1.3 0730 0.7 1514 1.3 1945 0.8
15 TU	0452 0.7 1215 1.4 1738 0.6	30 W	0155 1.4 0633 0.9 1421 1.4 1911 0.8	15 TH	0307 1.5 0752 0.9 1532 1.4 2018 0.7			15 F	0443 0.6 1220 1.3 1734 0.6	30 SA	0031 1.2 0701 0.8 1445 1.1 1918 0.9	15 M	0235 1.5 1053 0.5 1529 1.5 2039 0.6	30 TU	0320 1.4 0823 0.6 1603 1.4 2039 0.7



Bon VOYAGE

We hope that you have enjoyed your stay, and discovering all that Weymouth has to offer.

We would be pleased to hear about your stay with us and welcome all feedback on your experience or suggestions on how we could try to improve. Comment cards are available in the harbour reception and shower area, or feel free to have a chat with a member of the team.

Have a safe onward journey; we look forward to welcoming you again.

Weymouth Harbour Team

Approximate distances in nautical miles from Weymouth Harbour:

ALDERNEY	54
CHERBOURG	66
COWES	45
DARTMOUTH	50
FALMOUTH	104
GUERNSEY	71
JERSEY	90
LYMINGTON	41
THE NEEDLES	34
POOLE	26
PORTSMOUTH	57
SOUTHAMPTON	53
ST MALO	125
SWANAGE	22
YARMOUTH	39



Weymouth

HARBOUR OFFERS

SPECIAL OFFER

Our popular *free night berthing offer continues, with customers able to carry over stamps collected previously.

SPECIAL OFFER

5 nights for 4 – Any vessel staying for four nights will receive the fifth night free of charge (excludes July - August)

* T&C apply, especially in July and August.



SPECIAL OFFER

Annual Marina berthholders (North Quay or Westwey Road) are entitled to a 50% discount when applying for a WPBC annual car park permit

*Terms and conditions apply.



Check www.weymouth-harbour.co.uk regularly for the latest new offers and follow us on Facebook.

Thank you FOR VISITING

Weymouth Harbour

To show our appreciation, have a night on us. Stay 4 nights and get your 5th completely FREE. Just collect your stamps below*

1st
Night

2nd
Night

3rd
Night

4th
Night

free
Night

*Terms and conditions apply

yacht Clubs OF WEYMOUTH

YCW is the umbrella organisation for: -

- Royal Dorset Yacht Club
- Royal Naval Sailing Association (Portland)
- Castle Cove Sailing Club
- Weymouth and Portland Cruising Association
- Weymouth Sailing Club

It co-ordinates the activities of these clubs and organises larger events that are outside the scope of an individual club, especially the Weymouth Regatta and major championships.

Royal Dorset Yacht Club

Situated on Custom House Quay, near the Harbour Master's Office, the club welcomes visiting yachtsmen and women to its first-floor clubhouse, which has stunning views over Weymouth Harbour. There's excellent food and a well-stocked bar featuring local real ales. Open daily throughout the summer.

T: +44(0)1305 786258

E: info@royal-dorset.com

W: www.royal-dorset.com

Address: 11, Custom House Quay, Weymouth DT4 8BG

Castle Cove Sailing Club

Castle Cove Sailing Club is a thriving, long established, family club, based in Portland Harbour and run by members for members. The club is situated at the end of Old Castle Road, Weymouth and visiting yachtsmen and women are always welcome. During the summer, on race nights, the bar and galley are open and, with notice, both can be made available at other times. For information please contact the club:

T: +44(0)1305 783708

W: www.csc.org.uk

Weymouth Sailing Club

With excellent food and a very good bar, not to mention the view of the harbour, the Club is open to all visiting yachtsmen and women, please check opening times.

T: +44(0)1305 785481

E: mail@wsc.org.uk

W: www.wsc.org.uk

Address: Nothe Parade, Weymouth DT4 8TX

Weymouth and Portland Cruising Association (WPCA)

The Weymouth and Portland Cruising Association was formed in 1984 to meet the needs of sailing and motor boat owners who wanted to cruise in company and meet like-minded seafarers. We meet every Tuesday evening at Castle Cove Sailing Club for a social get-together or visiting speaker's talk. Visiting yachtsmen are made very welcome. We have a number of swinging moorings in Portland Harbour available for members. For more details contact Michael Gregory:

T: +44(0)1305 889165

E: info.wpcruising.org@gmail.com

W: www.wpcruising.org.uk



useful Information and contacts

When dialling from outside of the United Kingdom, please use the international dialling code +44.

Non-Emergencies

Doctors	01305 774466
Dentist NHS.....	111
Dorset Police.....	01305 222222
Weymouth Hospital.....	01305 760022

Port & Customs

Port Health Authority	01305 838432
HM Customs Advice Line.....	0845 0109000
HM Customs Yacht Arrivals & Departures.....	0845 7231110
Portland Port.....	01305 824044

Nautical

Weymouth Harbour Office	01305 838423
Castle Cove Sailing Club	01305 783708
Dean & Reddyhoff, Weymouth Marina	01305 767576
Royal Dorset Yacht Club.....	01305 786258
Weymouth Sailing Club	01305 785481
Coastwatch Portland Bill	01305 860178 / VHF Channel 65
Weymouth & Portland Cruising Association	01305 889165
Quayside Fuel.....	07747 182181
Fuel Pontoon	01305 783677

Taxis

Bee Cars	01305 775151
Fleetline	01305 777333
Weyline	01305 777777

Cycle Hire

Weymouth Bike Hire.....	07548 254634
-------------------------	--------------

Public Transport

First.....	0870 0106022
National Rail Enquiries	08457 484950
South West Coaches	01305 823039
Traveline	0871 2002233

Buses to Portland leave from a bus stop at the King's Statue. Services to Dorchester, Abbotsbury and Bridport depart from bus stops on the Esplanade (see map on page 18) A regular double-decker bus service (COASTLINX53) travels the Jurassic Coastline, allowing passengers to hop on and off at any of the stops along its route between Poole & Exeter.

The railway station is situated in King Street. Trains depart for London twice hourly (via Dorchester, Bournemouth & Southampton) and for Bristol (via Dorchester and Yeovil Pen Mill) several times each day.

Small ferries leave Weymouth Harbour for Portland Castle, Marina and Weymouth & Portland National Sailing Academy. Please call 01305 785000 or visit www.coastlinecruises.com for details.

West Bay Harbour

Telephone no.	01308 423222
Mobile.	07870240636
VHF Marine Channels 16 & 11 (Listen & Work)	

Lyme Regis Harbour

Telephone no.	01297 442137
Mobile.	07870 240645
VHF Marine Channels 16 & 14 (Listen & Work)	

Solent Coastguard

Telephone no.	02392 552100
VHF Marine Channel 67 (Listen & Work)	


Useful Websites

www.weymouth-harbour.co.uk
www.dorsetforyou.com/weymouthandportland
www.visitweymouth.co.uk
www.jurassiccoast.org
www.dorsetseafood.co.uk
www.visit-dorset.com/food-and-drink
<http://rnli.org/Pages/default.aspx>

LIFERAFT HIRE • LIFERAFT & DINGHY SERVICING

"You have got to admit, Premium really look after their customers"

Send for our FREE info pack and depot list



0800 243673
 info@liferrafts.com
 www.liferrafts.com

All kinds of safety equipment available at competitive prices.

Liferaft House, Burnham-on-Crouch, Essex. CMO 8TE

LeeSan sales@leesan.com
 Marine • Welfare • Leisure
T: 01295 770000

MARINE ONE STOP PUMP SHOP

Website Discount Code "WH"

Toilet, Tanks, Hoses, Clips, Gauges, Deck Fittings, Vent Filters and everything you need plus Advice & Guidance



PUMP A Pump Technology Ltd Group Company



Lake Marine Products

LAKE ENGINEERING (Poole) Ltd
 Suppliers & Manufacturers of Sterngear & Propellers
GORI PROPELLERS
RADICE PROPELLERS • PSS SHAFT SEALS

Tel: 01202 621631 • sales@lakesterngear.co.uk
 www.lakesterngear.co.uk
PART OF THE SILLETTE GROUP

QUALITY CRUISING & RACING SAILS
 • DODGERS & SPRAYHOODS • MADE IN BRITAIN



Kemp Sails

SAILMAKING CENTRE | Sail servicing and valeting – local collections & returns by arrangement.
 Wareham, Dorset

T. +44 (0)1929 554308 | T. +44 (0)2392 808717
 Email: info@kempsails.com | www.kempsails.com

Marine Services

The marine service industry has always had a strong presence in the borough of Weymouth and Portland, and an increasing number of businesses are available to cater for all your chandlery needs.

Following the departure of the Royal Navy from Portland in 1995, the waters around Weymouth & Portland became a magnet for sport divers, windsurfers and leisure craft owners as space was created to build on the existing water sports activities. Interest has continued to grow in this thriving sector of the local economy.

Osprey Quay is home to a number of large marine industry employers, and companies such as Sunseeker have invested heavily in the area; for example, their luxurious motor yacht 'Predator 108' - as featured in the Bond movie 'Casino Royale' - was built at Osprey Quay in Portland after the company developed new manufacturing facilities there.

The 600 berths provided by Osprey Quay, in addition to the 800 or so berths in Weymouth, no doubt provide a sizable source of trade for those in the marine leisure sector.

The South West Regional Development Agency investment in the regeneration of the former Royal Naval Air Station at Portland, which included the development at Osprey Quay, a low carbon housing project and a training centre for the Royal Yachting Association, are just a few of the schemes that continue to create jobs and add momentum to the rapidly expanding local marine industry.

These pages offer a selection of businesses able to assist readers with everything from chandlery, sail making and engineering to yacht brokerage.

A.D. GORDON

MODERN & TRADITIONAL YACHT RIGGING (PORTLAND)

Authorised Seldén dealer • Z Spar sparring partner

Hand splicing in Wire and Rope

N.D.T. Rigging Terminal Testing • Commercial Rigging

Talurit Splicing • Roll Swaging

MARLOW ROPES

Tel/Fax: 01305 821569 Mobile: 07774 633419 Email: adgrigging@talktalk.net

Clark's

BOATWORKS LTD

CROWN WHARF, 1 - 5 CASTLETOWN, PORTLAND DT5 1BD

- Boat storage with facilities • Emergency boat lifts
- Commercial & leisure boat repairs
- Traditional wooden boat restoration specialists
- Complete refitting & refurbishments undertaken
- Building of all types of boats & yachts
- Osmosis Centre • Routine maintenance work



LONGEST ESTABLISHED LOCAL BOAT BUILDER
A FAMILY RUN BUSINESS WITH THE PERSONAL TOUCH

Tel: 01305 860 265 • Tim: 07836 314 025 • Jerry 07879 894 688 • Ryan 07887 875 691

www.clarksboatworks.co.uk



moatt sails

TEL: 01305 824254
MOB: 07833 383 221

not just a sailmaker

EMAIL: SKMOATT@BTCONNECT.COM
WWW.MOATTSAILS.CO.UK



- NEW SAILS AND REPAIRS
- WINTER OVERHAULS
- LAUNDRY
- COVERS, CANOPIES AND SUN SHADES
- STORAGE

INNOVATION, PROBLEM SOLVING & QUALITY PRODUCTS

UNIT 23 NAVIGATOR BUSINESS PARK, OSPREY QUAY, PORTLAND, DT5 1PY

Sail Maker

DAN STUTTLE MARINE SERVICES

Marine engine service, repair, spares
and sales / new installations

Leisure and commercial vessels

BETA MARINE
SALES & SERVICE

31 Hope St, Weymouth, Dorset DT4 8TT
(Based right on the quayside just next door to Bussells Chandlers)

Mobile 24h : 07973 325180

dan.stuttle@gmail.com



MECHANICAL
SERVICES

Marine, Hydraulic & Industrial Engineers

VOLVO
PENTA

01305 779 379

Info@mechanicalservicesltd.co.uk

Nineteen, Mereside, Portland, Dorset, DT5 1PY



- Service/Sales/ Maintenance
- Repair/Refit & Insurance work
- Mobile & Workshop Service

Keep your engine fully protected with genuine
Volvo Penta parts, all fitted by a trained and
certified Volvo Penta engineer.

Go to our website to find out more:
www.mechanicalservicesltd.co.uk

APPROVED
VOLVO PENTA SERVICE

"Integrating Engineering Solutions"

BHmarine

RYA Training, Own Boat Tuition,
Yacht Service Management, Boat Deliveries

07515 663799

WWW.BHMARINE.CO.UK



BUSINESS LISTINGS

A.D. GORDON

 DT5 2AN

Weymouth and Portland's very own complete rigging service, offering the supply and repair of mast spars and reefing systems, running and standing rigging, NDT testing, winch servicing.

 01305 821569/07774 633419

 adgrigging@talktalk.net

ALDERNEY VISITOR INFORMATION CENTRE

Just a stone's throw from the south coast of England lies the treasured island of Alderney, a hidden gem to be discovered.

 01481 822333  tourism@alderney.gov.gg

 www.visitalderney.com

BH MARINE

Specialising in RYA and own-boat training, we also offer yacht service management, yacht deliveries & charters, and international boat deliveries.

 07515 663799  ben@bhmarine.co.uk

 www.bhmarine.co.uk

CLARK'S BOATWORKS LTD

 DT5 1BD

Longest established local boat builder/storage situated on Castletown Pier, Portland. Repairs, complete fitting and refurbishment of commercial and leisure boats, traditional wooden boat specialists and osmosis centre.

 01305 860265  clarksboatworks@hotmail.co.uk

 www.clarksboatworks.co.uk

DAN STUTTLE MARINE SERVICES

 DT4 8TT

Marine engineer based right on Weymouth harbourside available to assist with any servicing, spares and breakdowns. Full workshop facilities, 24hr cover.

 07973325180  dan.stuttle@gmail.com

DELICIOUS WEYMOUTH

 DT4 8BZ

Enjoy quality coffee in this charming independent deli while discovering hand-cut cheeses, a superior selection of wines and many more glorious Dorset flavours.

 01305 789033  hello@deliciousweymouth.co.uk

 www.deliciousweymouth.co.uk

DORSET VEHICLE RENTALS  **DT3 5LF**

We are an independent, locally-owned company established in 1995. We have a large range of cars, (including automatics) seating 4 to 7 people; also, commercial vehicles available with tow bars. Book on-line for a discount.

 **08000 515253**  **reception@dvr.uk.net**

 **www.dorsetvehiclerentals.co.uk**

KEMP SAILS  **BH20 4DY**

Established and built in Britain for sailors by sailors, using modern technologies, materials and a knowledge of what works best!

 **01929 554308**  **info@kempsails.com**

 **www.kempsails.com**

LAKE MARINE PRODUCTS  **BH16 5BW**

Lake Marine Products is a long-established company that strives to cater for all the propulsion needs in the sailing community.

 **01202 621631**  **sales@lakesterngear.co.uk**

 **www.lakesterngear.co.uk**

LEE SANITATION LTD

25 years' experience in the sanitation business, a reputation for fast, efficient and friendly service; experience in design, manufacturing, technical support and maintenance.

 **01295 770000**  **Info@Leesan.com**

 **www.leesan.com**

MARLBORO RESTAURANT LTD  **DT4 8AW**

A family-run business established in 1974. Visit the Marlboro Restaurant and Takeaway for the very best fish and chips.

 **01305 785700**  **marlborofood@aol.com**

 **www.marlbororestaurant.co.uk**

MECHANICAL SERVICES LTD  **DT5 1PY**

Technicians, trained in marine diagnostic equipment, providing a wide range of service products; preventative maintenance contracts to breakdown call-outs.

 **01305 779379**  **Info@mechanicalservicesltd.co.uk**

 **www.mechanicalservicesltd.co.uk**

MOATT SAILS  **DT5 1PY**

Based on Portland, we make high-performing sails, covers and canopies etc. and also offer sail repairs. Winter overhauls and storage available.

 **01305 824254**  **skmoatt@btconnect.com**

 **www.moattsails.co.uk**

PORTLAND MARINA  **DT5 1DX**

Modern marina, boatyard and drystack with on-water petrol/diesel sales, chandlery and more. Full Boat Care services for repairs, engineering and installation.

 **01305 866190**  **berths@portlandmarina.co.uk**

 **www.portlandmarina.co.uk**



Space
to explore

Special Offer
for 2018
3 nights for
the price of 2
on a visitors mooring
in Braye Harbour

Discover an island like no other.

Truly invigorating sailing, a secure mooring in the harbour and time to explore the island. Enjoy VAT-free goods and duty-free diesel. visitalderney.com/visit/sailing

Alderney. So Close. So Different.
+44 (0) 1481 822333 info@visitalderney.com
www.visitalderney.com

Alderney
THE CHANNEL ISLAND

PREMIUM LIFERAFT SERVICES

CM0 8TE

Leading liferaft hire company providing hire rafts for the leisure, charter and fully commercial sector. Liferaft and life jacket servicing also available.

0800 243673 info@liferafts.com

www.liferafts.com

THE YEALM – NEWTON FERRERS

PL8 1BL

The Yealm is one of the most significant boutique developments along the southern coast, providing luxury riverside and woodland homes in Devon.

01752 873311 newtonferrers@marchandpetit.co.uk

www.theyealm.co.uk

WEYMOUTH MARINA

DT4 8NA

A tranquil marina perfect for long holidays and annual berthing, located under the lifting bridge at the head of the harbour.

01305 767576 berths@weymouthmarina.co.uk

www.weymouthmarina.co.uk

WHY BOATS

SO31 8AZ

Why Boats is one of the UK's largest brokerage firms, with 150+ boats for sale. From our new offices at Portland Marina, we also offer new Elan Yachts and Ocqueteau fishing/leisure boats.

02382 120000 info@whyboats.com

www.whyboats.com

The Yealm is one of the most significant boutique developments along the southern coast. Overlooking the serene natural harbour of the twin villages of Newton Ferrers and Noss Mayo, Devon, a delightful and popular yachting destination, this truly is a once in a lifetime opportunity.

Red Earth is restoring this elegant building back to its former glory with 6 spacious lateral apartments, 8 other contemporary apartments and 1 stunning house. All situated in spacious wooded grounds, with direct estuary views and private parking. Show flat launch autumn 2018. Completion spring 2019.

www.theyealm.co.uk



THE YEALM

LUXURY RIVERSIDE &
WOODLAND HOMES

NEWTON FERRERS
DEVON



For more information or to register your interest in The Yealm, please contact Marchand Petit's Newton Ferrers office on:
01752 873311 or email newtonferrers@marchandpetit.co.uk

Marchand Petit
www.marchandpetit.co.uk

Set sail for Poole

with your pride & joy



PERMANENT BERTHS

Whatever you love to do, you will enjoy our permanent berth marina. It's in a private position magnificent views and gorgeous sunsets,

VISITOR MARINA

Use your boat to explore the stunning Jurassic Coast. Enjoy all the attractions of Poole, Bournemouth and beautiful Dorset.

SWINGING MOORINGS

Relax with a glass of wine, on your own swinging mooring in Poole Harbour overlooking Brownsea Island, Offering you ultimate privacy, peace and tranquillity.

JET SKI OR RIBS

Keeping your craft on a Jet Ski or RIB Dock has the advantage of 'out-of-water' storage but still offers the convenience of marina berthing and more time for leisure.

**WINTER LETS ALSO
AVAILABLE FROM 2018-2019**



POOLE QUAY
Boat Haven
PORT OF POOLE
Marina

Poole Town Quay, Poole, Dorset BH15 1HJ • t: 01202 649488

www.poolequayboathaven.co.uk

VHF Channel 80 call sign "Poole Quay Boat Haven"



HOME OF THE
**POOLE HARBOUR
BOAT SHOW**



DISCOVER DORSET FROM ABOVE

Experience uninterrupted 360° views of the Jurassic Coast, Portland and Weymouth Harbour on this unique observation tower.

JurassicSkyline.com