



This work is licensed under a Creative Commons Attribution 3.0 License.

## Monograph

[urn:lsid:zoobank.org:pub:C1E8E726-9AB3-456A-97B2-A925A682DB52](http://urn:lsid:zoobank.org:pub:C1E8E726-9AB3-456A-97B2-A925A682DB52)

# Second annotated list of type specimens of molluscs deposited in the Museu de Zoologia da Universidade de São Paulo, Brazil

Daniel C. CAVALLARI<sup>1,\*</sup>, Ana Paula S. DORNELLAS<sup>2</sup> & Luiz Ricardo L. SIMONE<sup>3</sup>

<sup>1,2,3</sup> Museu de Zoologia da Universidade de São Paulo, Cx. Postal 42494, 04218-970 São Paulo, SP, Brazil.

\* Corresponding author: [dccavallari@gmail.com](mailto:dccavallari@gmail.com)

<sup>2</sup> Email: [dornellas.anapaula@gmail.com](mailto:dornellas.anapaula@gmail.com)

<sup>3</sup> Email: [lrsimone@usp.br](mailto:lrsimone@usp.br)

<sup>1</sup> [urn:lsid:zoobank.org:author:D0D70348-AF5B-417F-91BC-43DF9951D895](http://urn:lsid:zoobank.org:author:D0D70348-AF5B-417F-91BC-43DF9951D895)

<sup>2</sup> [urn:lsid:zoobank.org:author:B4162AEE-63BF-43D5-AABE-455AC51678BA](http://urn:lsid:zoobank.org:author:B4162AEE-63BF-43D5-AABE-455AC51678BA)

<sup>3</sup> [urn:lsid:zoobank.org:author:E66B5424-8F32-4710-B332-F35B9C8B84B0](http://urn:lsid:zoobank.org:author:E66B5424-8F32-4710-B332-F35B9C8B84B0)

**Abstract.** An alphabetical list of 352 type lots of molluscs housed in the Museu de Zoologia da Universidade de São Paulo is presented following the standards of the previous list by Dornellas & Simone (2011), with a few adjustments. Important items listed herein include types of species described after the previous compilation, as well as recently acquired paratypes of Asian Pomatiopsidae and Diplommatinidae (Gastropoda) taxa described by Rolf A.M. Brandt (1960s), P. Temcharoen (1970s) and W.J.M. Maassen (2000s), all of which belonged to the private collection of Jens Hemmen, Wiesbaden, Germany. Relevant items also include types of recently described species coming from the French-Brazilian Marion Dufresne MD55 expedition, and other types deposited by researchers from Brazil and the world. A list of authors and photographs of specimens are also provided.

**Keywords.** Catalogue, Diplommatinidae, Pomatiopsidae, primary types, secondary types.

Cavallari D.C., Dornellas A.P.S. & Simone L.R.L. 2016. Second annotated list of type specimens of molluscs deposited in the Museu de Zoologia da Universidade de São Paulo, Brazil. *European Journal of Taxonomy* 213: 1–59. <http://dx.doi.org/10.5852/ejt.2016.213>

## Introduction

The malacological collection of the Museu de Zoologia da Universidade de São Paulo (MZSP), Brazil, is probably the largest in Latin America. Built through the continuous efforts of several researchers along the past centuries, it harbors over 122 000 lots and over 1.2 million specimens of molluscs, including shells, soft parts and fossils.

Of the nearly 30 000 lots incorporated into the MZSP collection after the previous compilation of type specimens (Dornellas & Simone 2011), 352 are types. Some of the most important recently acquired items include numerous paratypes of Asian pomatiopsid taxa described by Rolf A.M. Brandt and P. Temcharoen in the late 1960s and early 1970s, as well as many diplommatinids described by W.J.M.

Maassen during the past decade. These specimens belonged to the private collection of Jens Hemmen (1944–2012), Wiesbaden, Germany. Interested in malacology since his early student life in the 1960s, Hemmen became a well-known shell collector, dealer, and researcher. Along with his wife Christa, he built a large assemblage during his active years, having travelled and collected molluscs in several countries worldwide. He donated or sold specimens to numerous institutions, including more than 22 000 specimens to the Academy of Natural Sciences of Philadelphia, USA, over 11 000 specimens to the Wiesbaden Museum, and a few specimens to the Senckenberg Museum, Germany (Kittel *et al.* 2012). Still, a considerable part of his collection was sold to private collectors and dealers, and some of the specimens were subsequently acquired by the MZSP.

A large portion of the items listed herein was collected during the cruise of the R/V *Marion Dufresne* (MD55), *Terres Australes et Antarctiques Françaises*, a joint project of the Muséum national d'Histoire naturelle (MNHN, Paris, France) and the Universidade Santa Úrsula (USU, Rio de Janeiro, Brazil). This expedition took place during May and June 1987 and recovered a vast quantity of deep-water Mollusca off southeastern Brazil (Tavares 1999). Part of the MD55 specimens, which includes the items listed below, were kindly donated to the MZSP for study. Other than that, most of the new types stem from the efforts of Brazilian malacologists aimed at describing the local fauna, as well as donations from researchers worldwide.

In the continuous effort to publish the types of the MZSP's malacological collection, we provide here a second annotated list including all the items incorporated after the previous compilation (types from the previous list are not included in this work). A few items that were subsequently confirmed as types or inadvertently left out of the previous list are also discussed herein. We list primary and secondary types, possible paratypes, as well as any relevant topotypes. We provide colour photographs of older or non-illustrated taxa, references to the original descriptions, information on preservation, as well as any other relevant data on the specimens. We also take the opportunity to present a brief corrigendum to the previous list.

## Material and methods

The list presented below follows the standards of Dornellas & Simone (2011), with some modifications. The taxa are arranged in alphabetical order of specific epithets. After the specific epithet, the genus and author are given, followed by the year of description. The second line contains a citation to the original description, including a full range of pages and indications of the original figures when applicable. The remaining information is displayed according to the following template (modified after Dornellas & Simone 2011):

Class, Family

*Holotype*: MZSP Number (Figure reference)

*Paratype*<sup>1</sup> (*number of spc*): MZSP Number (Figure reference, when applicable)

*Paratype*<sup>2</sup> (*number of spc*): MZSP Number (Figure reference, when applicable)

*Locality*: Type locality; 1) Locality of paratype<sup>1</sup> (when applicable); 2) Locality of paratype<sup>2</sup> (when applicable).

*Collector*: Collector of holotype; 1) Collector of paratype<sup>1</sup> (when applicable); 2) Collector of paratype<sup>2</sup> (when applicable).

*Preservation*: Holotype preservation method; 1) paratype<sup>1</sup> preservation method (when applicable); 2) paratype<sup>2</sup> preservation method (when applicable).

*Remarks*: Additional information on origin, previous collections, donations and taxonomy.

It should be noted that the superscripts for paratypes and topotypes do not correspond to any designation by the original author. Such information is mentioned among the remarks when applicable. Unless

otherwise stated, paratype lots contain a single specimen and are organized in numerical order of catalogue numbers. Localities are given only after the list of type lots for each species, and individual localities for each lot are arranged in numerical order corresponding to their respective superscripts (e.g., 1) Brazil, Alagoas state; 2) Argentina, Buenos Aires; etc.). The systematic arrangement follows the World Register of Marine Species (WoRMS 2015) database for marine groups, and Bouchet *et al.* (2005) for the remaining taxa, with some modifications after Simone (2011).

### **Institutional abbreviations**

INPA = Instituto Nacional de Pesquisas da Amazônia, Brazil  
MNHN = Muséum national d'Histoire naturelle, France  
MZSP = Museu de Zoologia da Universidade de São Paulo, Brazil  
RMNH = Rijksmuseum van Natuurlijke Historie, Netherlands (currently Naturalis Biodiversity Center)  
SEATO = South East Asian Treaty Organisation, Thailand  
SMRL = SEATO Medical Research Laboratory, Thailand  
UNIRIO = Universidade Federal do Estado do Rio de Janeiro, Brazil  
USU = Universidade Santa Úrsula, Brazil

### **Research project abbreviations**

PADCT = “Importância e Caracterização da Quebra de Plataforma Continental para Recursos Vivos e Não Vivos”, Brazil.  
REVIZEE = “Programa de Avaliação do Potencial Sustentável de Recursos Vivos da Zona Econômica Exclusiva”, Brazil.

## **Results**

### ***Annotated list of type specimens***

#### ***abundans*, *Diplommatina* Maassen, 2002**

*Diplommatina abundans* Maassen, 2002: 165 (figs 1–2).

Gastropoda, Diplommatinidae

*Probable paratype*: MZSP 95465 (Fig. 1E–F).

*Locality*: Indonesia, West Sumatra, SE of Bukit Tingi, 3 km N of Lintau Village, near the entrance of Gua Pangian (type locality), 1996.

*Preservation*: Dry.

*Remarks*: Former Jens Hemmen Collection. Data on specimen's label compare fittingly with a 100-specimen paratype series originally deposited in Maassen's reference collection.

#### ***adami*, *Paraprososthenia* Brandt, 1970**

*Paraprososthenia adami* Brandt, 1970: 189–190 (pl. 13, fig. 7 + text fig. 7).

Gastropoda, Pomatiopsidae

*Probable paratype*: MZSP 95923.

*Locality*: Cambodia, Mekong River at Sambor (type locality), N of Kratie, 6 Apr. 1969.

*Preservation*: Dry.

*Remarks*: Former Jens Hemmen Collection. Measurements and data on the specimen's label correspond to the 70-specimen paratype lot originally catalogued as SMRL 16302.

***ahiparana*, *Turritella* Powell, 1927**

*Turritella* (*Zeacolpus*) *ahiparana* Powell, 1927: 297 (pl. 34, fig. 4).

Gastropoda, Turritellidae

*Probable paratype*: MZSP 101757 (Fig. 5C–D).

*Locality*: New Zealand, Northland, Ahipara, ~42 m depth.

*Preservation*: Dry.

*Remarks*: The holotype, as well as several paratypes of *Z. ahiparana*, were deposited in Powell's private collection, and only the former was figured and measured. The probable paratype listed above belonged to the private shell collector Ralph Humes, who had a large private assemblage in the late 1950s. His collection contained 850 lots, including types. The Ralph Humes Collection label bears a handwritten paratype status annotation. This species was recombined as *Stiracolpus ahiparanus* by Beu (2011).

***akangus*, *Dolichupis* Simone & Cunha, 2012**

*Dolichupis akangus* Simone & Cunha, 2012: 754–756 (fig. 4A–D).

Gastropoda, Triviidae

*Paratypes* (2 *spc*): MZSP 104027.

*Paratypes*<sup>1</sup> (2 *spc*): MZSP 104028.

*Paratypes*<sup>2</sup> (4 *spc*): MZSP 104029.

*Localities*: Brazil, Espírito Santo, off Regência, 19°40' S, 37°48' W, MD55 sta. CB77, 790–940 m depth, 27 May 1987; 1) off Itaúnas, Abrolhos Slope, 18°56' S, 37°52' W, MD55 sta. DC82, 85–105 m, 28 May 1987; 2) off Itaúnas, 18°59'S, 37°48' W, 607–620 m, 27 May 1987.

*Collectors*: P. Bouchet, J.H. Leal and B. Métivier.

*Preservation*: Dry.

*Remarks*: Former MNHN, Paris.

***alagoensis*, *Terebra* Lima, Tenório & Barros, 2007**

*Terebra alagoensis* Lima, Tenório & Barros, 2007: 66 (figs 13–17).

Gastropoda, Terebridae

*Holotype*: MZSP 84238.

*Locality*: Brazil, off Alagoas, continental slope, 10°05'57" S, 35°46'24" W, D-29, 720 m depth, 28 Oct. 2000.

*Collector*: R/V *Natureza*.

*Preservation*: Dry.

***alaris*, *Cranopsis* Simone & Cunha, 2014**

*Cranopsis alaris* Simone & Cunha, 2014: 448–449 (figs 66–75).

Gastropoda, Fissurellidae

*Paratypes* (2 *spc*): MZSP 105512.

*Locality*: Brazil, Espírito Santo, Abrolhos Slope, off Itaúnas, 18°59' S, 37°50' W, 295 m depth, MD55 sta. DC75 (type locality), 27 May 1987.

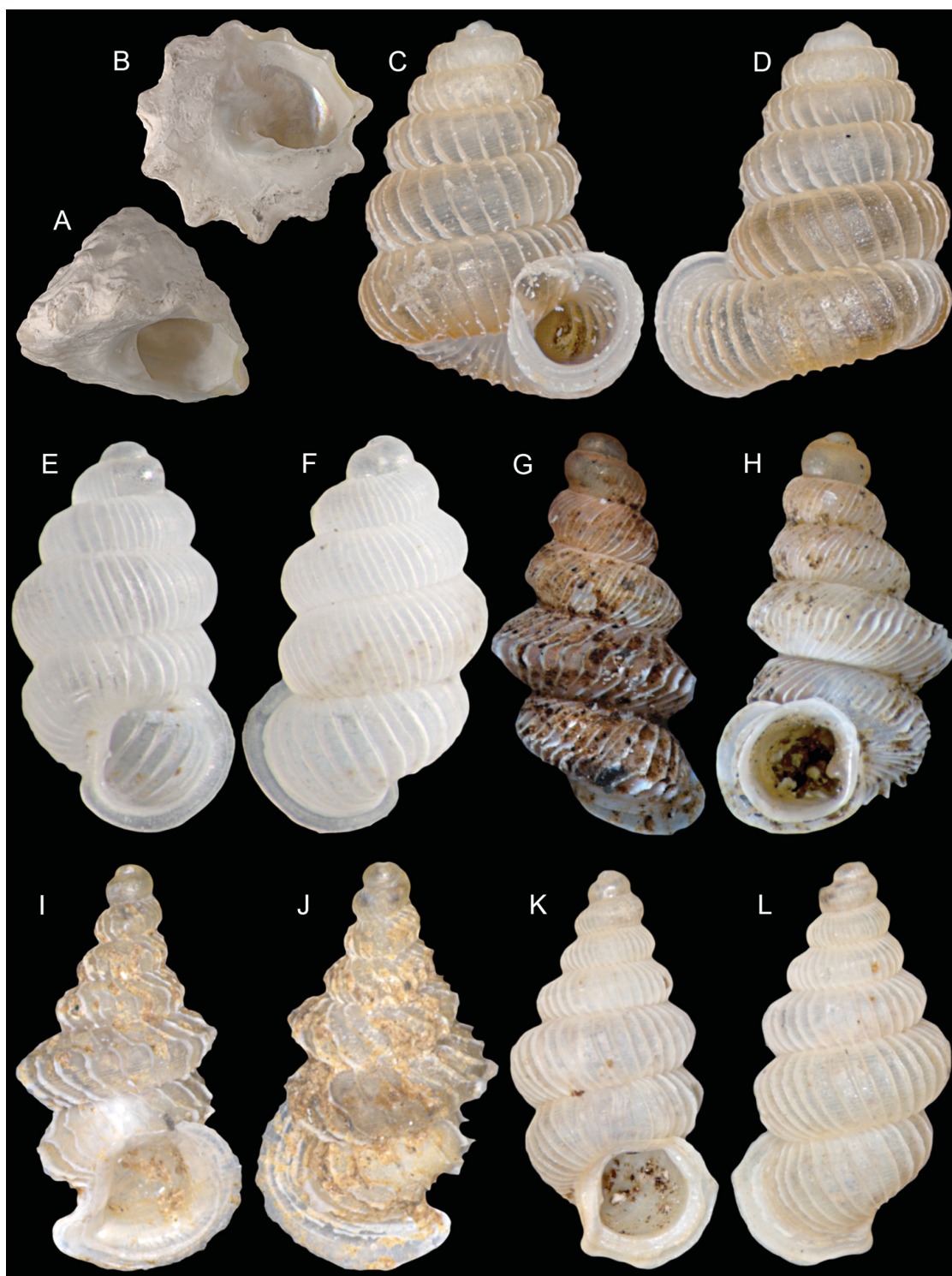
*Collectors*: P. Bouchet, J.H. Leal and B. Métivier.

*Preservation*: Dry.

*Remarks*: Former MNHN, Paris.

***alvesi*, *Gardiella* Lima, Barros & Petit, 2007**

*Gardiella alvesi* Lima, Barros & Petit, 2007: 100–102 (figs 1–14).



**Fig. 1.** A–B. *Astraea danieli* Alf & Kreipl, 2006, paratype MZSP 95919, L = 11.5 mm, W = 14.5 mm. C–D. *Arinia panhai* Maassen, 2001, paratype MZSP 95493, L = 2.58 mm, W = 2 mm. E–F. *Diplommatina abundans* Maassen, 2002, paratype MZSP 95465, L = 1.34 mm, W = 0.7 mm. G–H. *Diplommatina carinaspinosa* Maassen, 2002, paratype MZSP 95941, L = 1.83 mm, W = 0.83 mm. I–J. *Diplommatina supralamellata* Maassen, 2007, probable paratype MZSP 95498, L = 3.37 mm, W = 1.75 mm. K–L. *Diplommatina wilhelminae* Maassen, 2002, probable paratype MZSP 95462, L = 2.87 mm, W = 1.37 mm.

Gastropoda, Cancellariidae

*Holotype*: MZSP 78932.

*Paratypes* (4 spc): MZSP 78933.

*Locality*: Northeastern Brazil, off Pernambuco, muddy bottom, 08°46.5' S, 34°44.5' W, 690 m depth (type locality), 18 Nov. 2000.

*Preservation*: Dry.

*Remarks*: The holotype and one of the four MZSP paratypes were figured in the original description (Lima *et al.* 2007a: respectively figs 1–5 and figs 12–13).

***amandus*, *Megalobulimus* Simone, 2012**

*Megalobulimus amandus* Simone, 2012b: 436–438 (figs 22–26).

Gastropoda, Strophocheilidae

*Holotype*: MZSP 103917.

*Paratypes* (10 spc): MZSP 103918.

*Paratypes* (3 spc): MZSP 103919.

*Locality*: Brazil, Bahia, Santa Maria da Vitória, ~13°24' S, 44°12' W, ~460 m altitude (type locality), Jan. 2012.

*Collector*: J. Coltro.

*Preservation*: Dry.

***amphissa*, *Turricostellaria* Simone & Cunha, 2012**

*Turricostellaria amphissa* Simone & Cunha, 2012: 758–759 (fig. 5A–D).

Gastropoda, Costellariidae

*Paratypes* (2 spc): MZSP 102691.

*Locality*: Brazil, Espírito Santo, off Itaúnas, Abrolhos Slope, 18°59' S, 37°50' W, MD55 sta. DC75, 295 m depth, 27 May 1987.

*Collectors*: P. Bouchet, J.H. Leal and B. Métivier.

*Preservation*: Dry.

*Remarks*: Former MNHN, Paris.

***analuciae*, *Bullata* Souza & Covert, 2001**

*Bullata analuciae* de Souza & Covert, 2001: 5–6 (figs 2, 8, 11).

Gastropoda, Marginellidae

*Paratype*: MZSP 28243 (Fig. 5G–H).

*Locality*: Brazil, Espírito Santo, Vitória, 20°20' S, 40°00' W, 60–70 m depth (type locality), Apr. 1996.

*Collector*: Shrimp fishing boat.

*Preservation*: Dry.

***angrensis*, *Eurytellina* Marques & Simone, 2014**

*Eurytellina angrensis* Marques & Simone, 2014: 40–46 (figs 1–35).

Bivalvia, Tellinidae

*Holotype*: MZSP 21720.

*Paratype*<sup>1</sup>: MZSP 41519.

*Paratype*<sup>2</sup>: MZSP 58933.

*Paratype*<sup>3</sup>: MZSP 84044.

*Paratype*<sup>4</sup>: MZSP 108179.

*Paratype*<sup>5</sup>: MZSP 108182.

*Localities*: Brazil, Rio de Janeiro, Ilha Grande Bay, along the coast of Angra dos Reis, 23°06'S, 44°36'W; 1) São Paulo, Pedras Miúdas Beach, 23°49'49.2" S, 45°23'13.6" W; 2) São Sebastião, Araçá Beach; 3) Ilhabela, Barreiro Beach, 23°48'57.65" S, 45°22'19.34" W; 4) Santa Catarina, Porto Belo; 5) Rio de Janeiro state, Angra dos Reis, Enseada das Palmas, Ilha Grande City.

*Preservation*: holotype 70% ethanol; paratypes are preserved dry.

***aninga, Cornisepta* Simone & Cunha, 2014**

*Cornisepta aninga* Simone & Cunha, 2014: 441–442 (figs 17–27).

Gastropoda, Fissurellidae

*Paratypes* (10 *spc*): MZSP 102942.

*Locality*: Brazil, Espírito Santo, Abrolhos Slope, off Itaúnas, 18°59' S, 37°50' W, 295 m depth, MD55 sta. DC75 (type locality), 27 May 1987.

*Collectors*: P. Bouchet, J.H. Leal and B. Métivier.

*Preservation*: Dry.

*Remarks*: Former MNHN, Paris.

***angularis, Corinnaeturris* Figueira & Absalão, 2010**

*Corinnaeturris angularis* Figueira & Absalão, 2010a: 739 (fig. 2G–J).

Gastropoda, Clathurellidae

*Paratype*: MZSP 95878.

*Locality*: Brazil, Rio de Janeiro, Campos Basin, 22°04'32" S, 39°54'11" W, sta. OPII#49, 722 m, 30 Jun. 2003.

*Collector*: R/V *Astro Garoupa*.

*Preservation*: Dry.

***aperta, Lithoglyphopsis* Temcharoen, 1971**

*Lithoglyphopsis aperta* Temcharoen, 1971: 103–104 (pl. 7, fig. 14 + text fig. 12).

Gastropoda, Pomatiopsidae

*Probable paratype*: MZSP 95942 (Fig. 5A–B).

*Locality*: Laos, Mekong River, Khong Island, near Wat, 28 Feb. 1969.

*Preservation*: Dry.

*Remarks*: Former Jens Hemmen Collection. Measurements and data on the specimen's label correspond to a 30-specimen paratype lot originally catalogued as SMRL 16336. This species was recombined as *Neotricula aperta* by Davis *et al.* (1986).

***apiculus, Microlinices* Simone, 2014**

*Microlinices apiculus* Simone, 2014: 580 (fig. 8C–G).

Gastropoda, Naticidae

*Paratypes* (6 *spc*): MZSP 105146.

*Locality*: Brazil, Espírito Santo, off Conceição da Barra, Abrolhos Slope, 18°59' S, 37°50' W, MD55 sta. CB76, 637 m (type locality), 27 May 1987.

*Collectors*: P. Bouchet, J.H. Leal and B. Métivier.

*Preservation*: Dry.

*Remarks*: Former MNHN, Paris.

***apostrema*, *Cranopsis* Simone & Cunha, 2014**

*Cranopsis apostrema* Simone & Cunha, 2014: 448 (figs 56–65).

Gastropoda, Fissurellidae

*Paratypes* (10 *spc*): MZSP 105509.

*Locality*: Brazil, Espírito Santo, off Itaúnas, Abrolhos Slope, 18°59' S, 37°50' W, 295 m (type locality), 27 May 1987.

*Collectors*: P. Bouchet, J.H. Leal and B. Métivier.

*Preservation*: Dry.

***apyrahi*, *Turricostellaria* Simone & Cunha, 2012**

*Turricostellaria apyrahi* Simone & Cunha, 2012: 759 (fig. 5L–R).

Gastropoda, Costellariidae

*Paratype*: MZSP 102862.

*Paratype*: MZSP 102863.

*Locality*: Brazil, Espírito Santo, off Itaúnas, Abrolhos Slope, 19°01' S, 37°47' W, MD55 sta. CB79, 1500–1575 m depth, 28 May 1987.

*Collectors*: P. Bouchet, J.H. Leal and B. Métivier.

*Preservation*: Dry.

*Remarks*: Former MNHN, Paris.

***aquitanus*, *Onustus* Simone & Cunha, 2012**

*Onustus aquitanus* Simone & Cunha, 2012: 750–751 (fig. 2).

Gastropoda, Xenophoridae

*Paratype*: MZSP 104032.

*Locality*: Brazil, Espírito Santo, off Conceição da Barra, Abrolhos Slope, 18°59' S, 37°50' W, MD55 sta. DC73, 637 m depth, 27 May 1987.

*Collectors*: P. Bouchet, J.H. Leal and B. Métivier.

*Preservation*: Dry.

*Remarks*: Former MNHN, Paris.

***arariboia*, *Yoldiella* Benaim & Absalão, 2011**

*Yoldiella arariboia* Benaim & Absalão, 2011: 521–523 (fig. 6).

Bivalvia, Yoldiidae

*Paratypes* (6 *spc*): MZSP 93358.

*Locality*: Brazil, Rio de Janeiro, Campos Basin, sta. 84, 22°26'28" S, 39°58'53.3" W, 1050 m depth, 2003.

*Collector*: R/V *Astro Garoupa*.

*Preservation*: Dry.

***arawak*, *Jaspidiconus* Petuch & Myers, 2014**

*Jaspidiconus arawak* Petuch & Myers, 2014a: 40–41 (fig. 2J–K).

Gastropoda, Conidae

*Holotype*: MZSP 116149.

*Locality*: Lesser Antilles Archipelago, Grenadines (Dependency of Grenada), Petit Martinique Island, 3 m depth.

*Preservation*: Dry.

*Remarks*: This species was recombined as *Conasprella arawak* by Puillandre *et al.* (2015).



***arrepinata*, *Cornisepta* Simone & Cunha, 2014**

*Cornisepta arrepinata* Simone & Cunha, 2014: 441 (figs 6–16).

Gastropoda, Fissurellidae

*Paratypes* (9 *spc*): MZSP 102943.

*Paratype*<sup>1</sup>: MZSP 102944.

*Paratype*<sup>2</sup>: MZSP 102945.

*Localities*: Brazil, Espírito Santo, Abrolhos Slope, off Itaúnas, 18°59' S, 37°50' W, 295 m depth, MD55 sta. DC75 (type locality); 1) off Regência, 19°40' S, 37°48' W, 790–940 m, MD55 sta. CB77; 2) off Itaúnas, 18°59' S, 37°48' W, 607–620 m, MD55 sta. DC73; all collected on 27 May 1987.

*Collectors*: P. Bouchet, J.H. Leal and B. Métivier.

*Preservation*: Dry.

***assu*, *Terebra* Simone & Cunha, 2012**

*Terebra assu* Simone & Cunha, 2012: 772–774 (figs 10A–E).

Gastropoda, Terebridae

*Paratype*: MZSP 102598.

*Locality*: Brazil, Espírito Santo, off Conceição da Barra, Abrolhos Slope, 18°59' S, 37°50' W, MD55 sta. DC75, 295 m depth, 27 May 1987.

*Collectors*: P. Bouchet, J.H. Leal and B. Métivier.

*Preservation*: Dry.

*Remarks*: Former MNHN, Paris.

***astirakiensis*, *Orculella* Gittenberger & Hausdorf, 2004**

*Orculella astirakiensis* Gittenberger & Hausdorf, 2004: 104–105 (figs 21, 46).

Gastropoda, Orculidae

*Paratype*: MZSP 95489 (Fig. 7C–D).

*Locality*: Greece, Crete, km 18 of old road Iraklio, 28 Oct. 1990.

*Preservation*: Dry.

*Remarks*: Former Jens Hemmen Collection. The specimen listed above is a remainder of a 17-specimen paratype lot deposited in Hemmen's collection by Gittenberger & Hausdorf (2004).

***asymmetrica*, *Ervilia* Marques & Simone, 2011**

*Ervilia asymmetrica* Marques & Simone, 2011: 652–653 (figs 1–7).

Bivalvia, Semelidae

*Holotype* (left valve): MZSP 96885.

*Paratype* (right valve): MZSP 96886.

*Paratype* (right valve): MZSP 96887.

*Paratype* (left valve): MZSP 96888.

*Locality*: Brazil, Pará, Amazon River mouth, 85 km off Ilha Mexiana, 0°27'23.28" N, 48°13'56.84" W, PIATAM Oceano (type locality), 10 Mar. 2009.

*Collector*: F.N. Santos.

*Preservation*: Dry.

***atiaia*, *Manganeosepta* Simone & Cunha, 2014**

*Manganeosepta atiaia* Simone & Cunha, 2014: 456–457 (figs 103–108).

Gastropoda, Fissurellidae

*Paratypes* (2 *spc*): MZSP 102941.

*Paratype*<sup>1</sup>: MZSP 102946.

*Localities*: Brazil, Espírito Santo, Abrolhos Slope, off Itaúnas, 19°00'S, 37°49'W, 950–1050 m depth, MD55 sta. DC77 (type locality); 1) off Itaúnas, 19°01' S, 37°47' W, 1500–1575 m, MD55 sta. CB79; all collected on 27 May 1987.

*Collectors*: P. Bouchet, J.H. Leal and B. Métivier.

*Preservation*: Dry.

#### ***bavayi*, *Pachydrobia* Brandt, 1970**

*Pachydrobia bavayi* Brandt, 1970: 192–193 (pl. 13, fig. 11 + text fig. 11).

Gastropoda, Pomatiopsidae

*Probable paratype*: MZSP 95911 (Fig. 2E–F).

*Locality*: Cambodia, Mekong River at Kratie (type locality), 3 Apr. 1969.

*Preservation*: Dry.

*Remarks*: Former Jens Hemmen Collection. Measurements and data on the specimen's label correspond to the lot originally registered under code SMRL 16285. The specimen listed above is a possible remainder of a 200-specimen paratype lot coming from the type locality.

#### ***benthovus*, *Microlinices* Simone, 2014**

*Microlinices benthovus* Simone, 2014: 575–578 (figs 6A–J, 7A–H, 11A–C).

Gastropoda, Naticidae

*Paratypes* (22 *spc*): MZSP 105269.

*Paratypes*<sup>1</sup> (15 *spc*): MZSP 105270.

*Paratypes*<sup>2</sup> (16 *spc*): MZSP 105271.

*Paratypes*<sup>3</sup> (7 *spc*): MZSP 105272.

*Localities*: Brazil, Espírito Santo, off Itaúnas, Abrolhos Slope, 18°59' S, 37°50' W, MD55 sta. DC73, 637 m depth, 27 May 1987; 1) 19°00' S, 37°48' W, MD55 sta. DC72, 950–1050 m, 27 May 1987; 2) off Regênciã, 19°40' S, 37°48' W, MD55 sta. CB77, 790–940 m depth, 27 May 1987; 3) off Itaúnas, Abrolhos Slope, 19°01' S, 37°47' W, MD55 sta. CB79, 1500–1575 m depth, 28 May 1987.

*Collectors*: P. Bouchet, J.H. Leal and B. Métivier.

*Preservation*: Dry.

*Remarks*: Former MNHN, Paris. The catalogue number MZSP 105250 is mentioned twice in Simone's (2014) paper, among the paratypes of *M. ibitingus* Simone, 2014 and *M. benthovus*. This duplicity was a mistake by the author: the latter is an erroneous designation and should be disregarded. The only valid paratype lots for *M. benthovus* are the ones shown above.

#### ***berschaueri*, *Jaspidiconus* Petuch & Myers, 2014**

*Jaspidiconus berschaueri* Petuch & Myers, 2014a: 41–42 (fig. 2D–F).

Gastropoda, Conidae

*Holotype*: MZSP 116150.

*Locality*: Lesser Antilles, Sint Maarten Island, Great Bay, Philipsburg, along the shore.

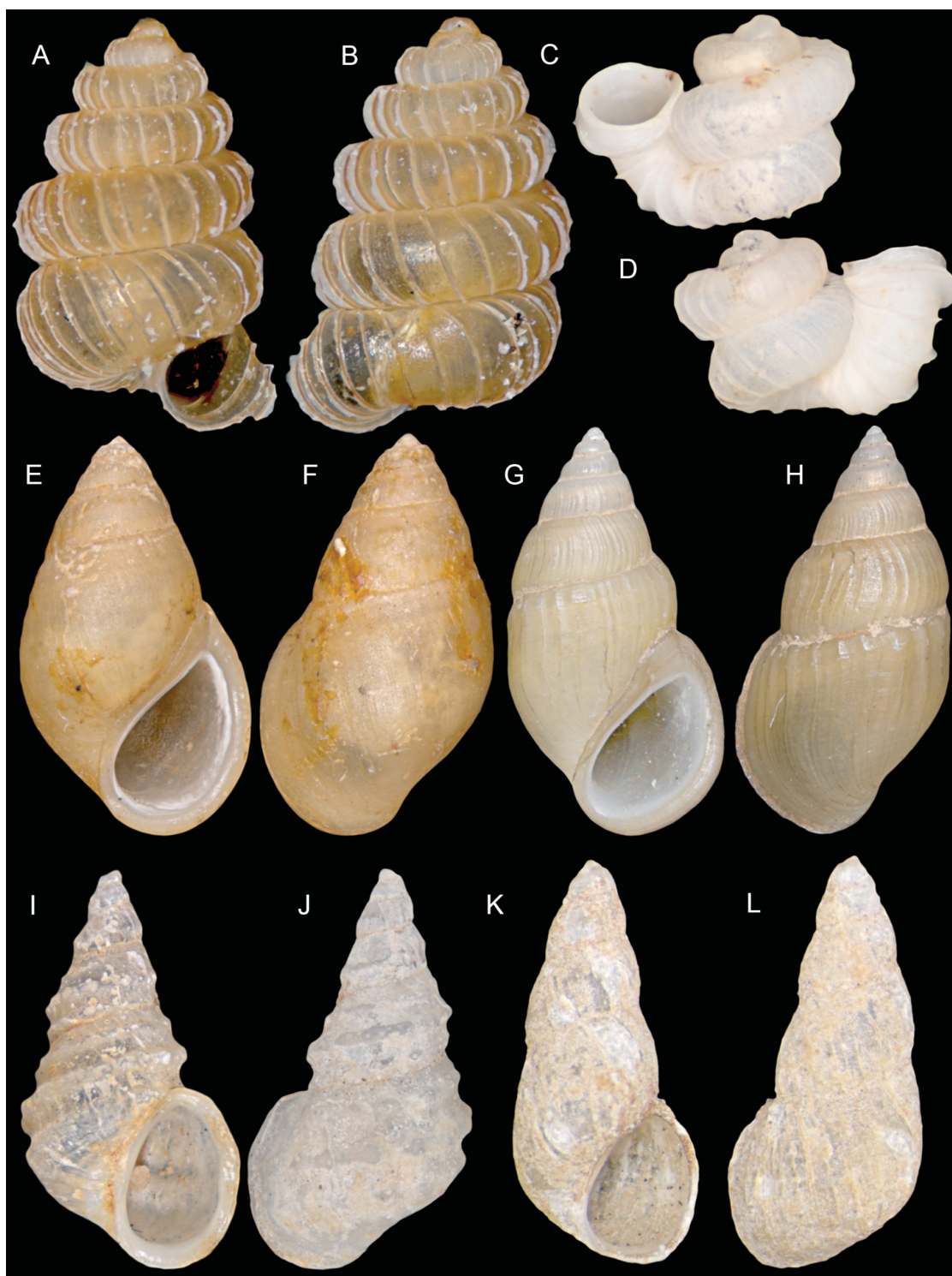
*Collector*: D. Berschauer.

*Preservation*: Dry.

*Remarks*: This species was recombined as *Conasprella berschaueri* by Puillandre *et al.* (2015).

#### ***biocellatus*, *Pustulaturus* Lyons & Snyder, 2013**

*Pustulaturus biocellatus* Lyons & Snyder, 2013: 48–49 (figs 46–51).



**Fig. 2.** A–B. *Opisthostoma christae* Maassen, 2001, paratype MZSP 95472, L = 2.55 mm, W = 1.55 mm. C–D. *Opisthostoma secretum* Maassen, 2002, probable paratype MZSP 95917, L = 0.9 mm, W = 1.28 mm. E–F. *Pachydrobia bavayi* Brandt, 1970, probable paratype MZSP 95911, L = 6.8 mm, W = 4 mm. G–H. *Pachydrobia crooki* Brandt, 1968, probable paratype MZSP 95469, L = 12.8 mm, W = 6.8 mm. I–J. *Paraprososthenia brandti* Temcharoen, 1971, probable paratype MZSP 95946, L = 5.25 mm, W = 3 mm. K–L. *Paraprososthenia fischerpiettei* Brandt, 1970, probable paratype MZSP 95496, L = 4.72 mm, W = 2.2 mm.

Gastropoda, Fasciolariidae

*Holotype*: MZSP 108767.

*Locality*: Brazil, Rio Grande do Norte, off northern Natal, on sandy bottom under rocks at 10–15 m depths.

*Collectors*: Collected by local people.

*Preservation*: Dry.

*Remarks*: Former Bill Lyons Collection, Florida, USA.

***boholensis*, *Strombus kleckhamae* Mühlhäusser, 1981**

*Strombus (Dolomena) kleckhamae boholensis* Mühlhäusser, 1981: 319 (figs 1–4).

Gastropoda, Strombidae

*Paratype*: MZSP 95952.

*Locality*: Bohol Island, Philippines.

*Preservation*: Dry.

*Remarks*: Former Jens Hemmen Collection. The specimen listed above was referred to as “Paratypus 2” in the original description, and figured on page 321 (fig. 3). This species was recombined as *Barneystrombus boholensis* by Blackwood (2009).

***brachyplax*, *Hanleya* Jardim & Simone, 2010**

*Hanleya brachyplax* Jardim & Simone, 2010b: 14.

Polyplacophora, Hanleyidae

*Holotype*: MZSP 87263.

*Paratype*<sup>1</sup>: MZSP 87264.

*Localities*: Brazil, São Paulo, off Cananéia, 25°44' S, 45°11' W, 408 m depth; 1) 25°44' S, 45°11' W, 400 m depth, 18 Apr. 2002.

*Collectors*: REVIZEE Score Sul project members.

*Preservation*: 70% ethanol; valves are preserved dry.

*Remarks*: Simone & Jardim published a description of this species in Rios (2009). Nevertheless, it did not fulfill the requirements of ICZN articles 16.1 (the species' name must be explicitly indicated as intentionally new) and 16.4 (fixation of name-bearing types must be explicit). In the following year, Jardim & Simone (2010a) published a new description with detailed figures and a holotype designation. However, since the new name was not explicitly and intentionally indicated, the requirements of ICZN article 16.1 were still not met in that paper. To correct this, the name *Hanleya brachyplax* was formally introduced in a subsequent note by Jardim & Simone (2010b), which is the only valid description.

***brandti*, *Paraprososthenia* Temcharoen, 1971**

*Paraprososthenia brandti* Temcharoen, 1971: 94 (pl. 6, fig. 3 + text fig. 3).

Gastropoda, Pomatiopsidae

*Probable paratype*: MZSP 95946 (Fig. 2I–J).

*Locality*: Laos, Sedone River at Khong Sedone, N of Pakse in Laos (type locality), 23 Feb. 1969.

*Preservation*: Dry.

*Remarks*: Former Jens Hemmen Collection. Measurements and data on the specimen's label compare fittingly with two paratype lots mentioned in the original description: SMRL 16109 and a 20-specimen lot originally deposited in the author's reference collection.

***breweri*, *Plekocheilus* Breure & Schlögl, 2010**

*Plekocheilus (Eurytus) breweri* Breure & Schlögl, 2010: 57–58 (figs 2D–2G, 3C–D, 4B–4F).

Gastropoda, Orthalicidae

*Paratypes* (2 *spc*): MZSP 92471.

*Locality*: Venezuela, Bolívar, Chimantá Massif, Curí-tepui, 05°16'44.9" N, 62°00'56.35" W, 2405 m depth (type locality), Feb. 2009.

*Collector*: J. Schögl.

*Preservation*: Dry.

***cambodiensis*, *Hydrorissoia* Brandt, 1970**

*Hydrorissoia cambodiensis* Brandt, 1970: 186 (pl. 13, fig. 3 + text fig. 3).

Gastropoda, Pomatiopsidae

*Probable paratype*: MZSP 95912 (Fig. 3A–B).

*Locality*: Mekong at Sambor (type locality), 6 Apr. 1969.

*Preservation*: Dry.

*Remarks*: Former Jens Hemmen Collection. Measurements and data on the specimen's label correspond to the lot originally catalogued as SMRL 16296. The specimen listed above is a possible remainder of a 200-specimen paratype lot coming from the type locality. This species was recombined as *Halewisia cambodiensis* by Davis (1979).

***canopa*, *Cranopsis* Simone & Cunha, 2014**

*Cranopsis canopa* Simone & Cunha, 2014: 449–450 (figs 76–83).

Gastropoda, Fissurellidae

*Holotype*: MZSP 107718.

*Paratypes* (24 *spc*): MZSP 90281.

*Paratypes* (11 *spc*): MZSP 94183.

*Locality*: Brazil, Ceará, off Fortaleza, Canopus Bank, 2°12'43" S, 38°18'52" W, 250 m depth (type locality), Aug. 2005.

*Collector*: J. Coltro.

*Preservation*: Dry.

***capivara*, *Cyclodontina* Simone & Casati, 2013**

*Cyclodontina capivara* Simone & Casati, 2013: 149–151 (figs 16–22).

Gastropoda, Odontostomidae

*Holotype*: MZSP 112448.

*Paratypes*<sup>1</sup> (19 *spc*): MZSP 111837.

*Paratypes*<sup>2</sup> (18 *spc*): MZSP 111838.

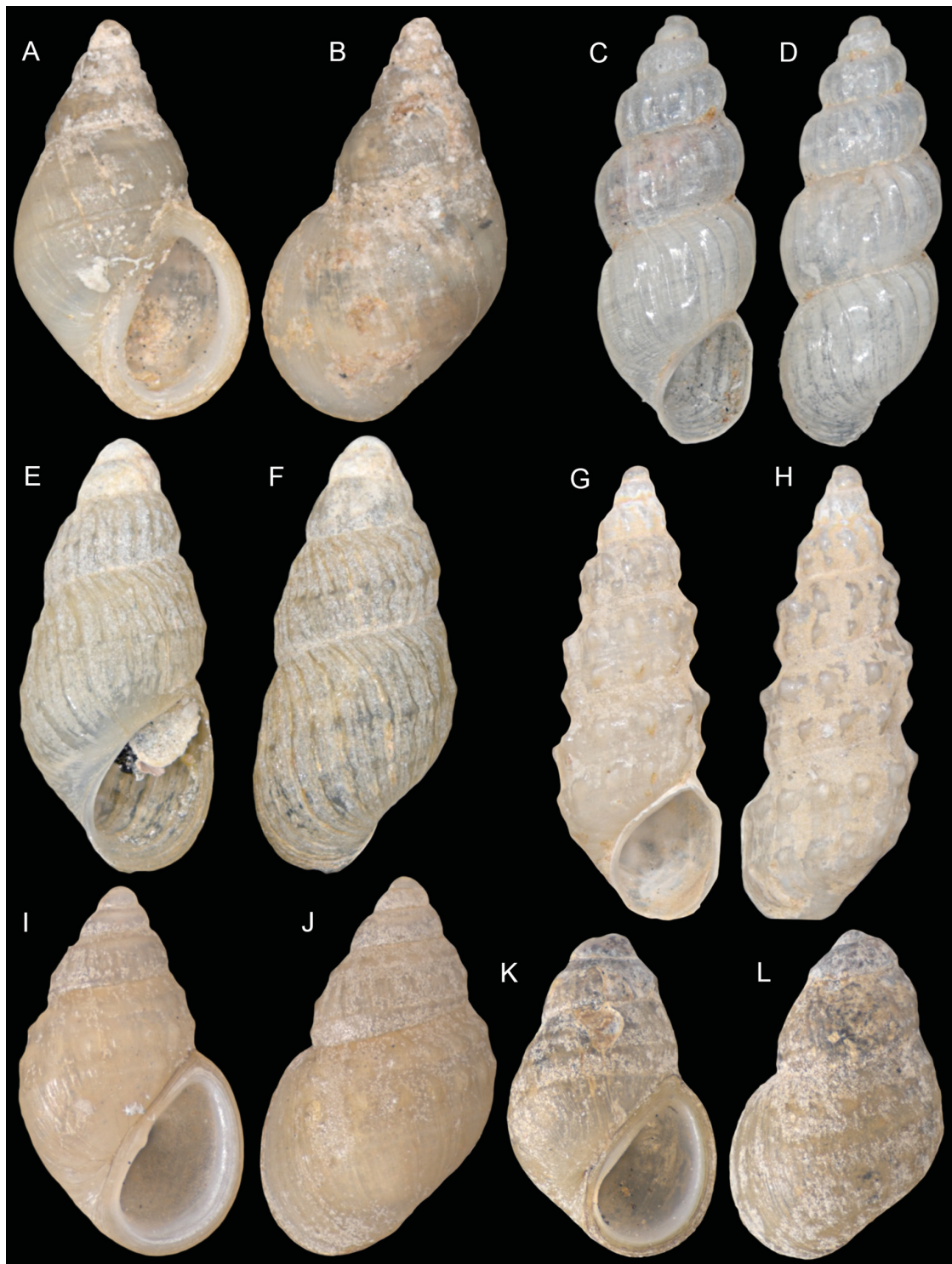
*Paratypes*<sup>3</sup> (9 *spc*): MZSP 111845.

*Localities*: Brazil, Piauí, Serra da Capivara, Coronel José Dias Municipality, close to Sítio do Mocó town, Toca de Cima dos Pilão Cave, 8°51'47.10" S, 42°33'26.96" W; 1–2) same, sta. P1; all collected in 2012; 3) from type locality.

*Collector*: R. Casati.

*Preservation*: Dry.

*Remarks*: Specimens in the lot MZSP 111835 were listed as paratypes of *Rhinus gilbertus* by Simone & Casati (2013, original description), but are in fact topotypes of *C. capivara*, which is described in the same paper. The lot MZSP 111845 contains 9 shells and not 8 as reported in the original description of *C. capivara*. Simone & Casati (2013) simultaneously reported the catalogue number MZSP 111845 among the paratypes of both *C. capivara* and *Rhinus gilbertus*. This catalogue number does not contain paratype specimens of *R. gilbertus*: this information is incorrect in the original description and should be disregarded.



**Fig. 3.** A–B. *Hydrorissoia cambodiensis* Brandt, 1970, probable paratype MZSP 95912, L = 3.9 mm, W = 2.3 mm. C–D. *Hubendickia cylindrica* Brandt, 1974, probable paratype MZSP 95944, L = 4.5 mm, W = 1.8 mm. E–F. *Hubendickia rolfbrandti* Temcharoen, 1971, probable paratype MZSP 95948, L = 4.1 mm, W = 2 mm. G–H. *Paraprososthenia schuetti* Brandt, 1968, probable paratype MZSP 95487, L = 6.2 mm, W = 2.1 mm. I–J. *Hydrorissoia hospitalis* Brandt, 1968, probable paratype MZSP 95949, L = 3.2 mm, W = 1.9 mm. K–L. *Hydrorissoia munensis* Brandt, 1968, probable paratype MZSP 95929, L = 2.76 mm, W = 1.74 mm.

***capixaba*, Anna Coltro & Dornellas, 2013**

*Anna capixaba* Coltro & Dornellas, 2013: 97–99 (figs 1–6, 9–10).

Gastropoda, Buccinidae

*Holotype*: MZSP 101385.

*Paratype*: MZSP 101386.

*Locality*: Brazil, Espírito Santo, off Conceição da Barra, 18°36' S, 39°32' W, 40–50 m depths, Dec. 2009.

*Collector*: J. Coltro.

*Preservation*: Dry.

***carinaspinosa*, Diplommatina Maassen, 2002**

*Diplommatina carinaspinosa* Maassen, 2002: 167 (figs 5–7).

Gastropoda, Diplommatinidae

*Probable paratype*: MZSP 95941 (Fig. 1G–H).

*Locality*: Indonesia, West Sumatra, SE of Bukittinggi, 3 km N of village Lintau, near entrance of Cave Gua Pangian, 00°28'19.5" S, 100°45'11.7" E (type locality), Jul. 1996.

*Collector*: W.J.M. Maassen.

*Preservation*: Dry.

*Remarks*: Former Jens Hemmen Collection. Data on the specimen's label and measurements compare fittingly with a large paratype series deposited in the authors' reference collection (Maassen 2002).

***carioca*, Oenopota Figueira & Absalão, 2010**

*Oenopota carioca* Figueira & Absalão, 2010b: 476 (fig. 1G–I).

Gastropoda, Mangeliidae

*Paratypes* (3 *spc*): MZSP 90708.

*Locality*: Brazil, Rio de Janeiro, Campos Basin, 22°27'31" S, 40°09'23" W, 750 m depth, sta. OPI#74 (type locality), 21 Nov. 2002.

*Collector*: R/V *Astro Garoupa*.

*Preservation*: Dry.

***cearensis*, Cranopsis Simone & Cunha, 2014**

*Cranopsis cearensis* Simone & Cunha, 2014: 445–446 (figs 48–55).

Gastropoda, Fissurellidae

*Holotype*: MZSP 106894.

*Paratypes* (19 *spc*): MZSP 90280.

*Paratypes* (18 *spc*): MZSP 93940.

*Paratypes* (2 *spc*): MZSP 100415.

*Locality*: Brazil, Ceará, off Fortaleza, Canopus Bank, 2°12'43" S, 38°18'52" W, 250 m depth (type locality), Aug. 2005.

*Collector*: J. Coltro.

*Preservation*: Dry.

***chichiensis*, Hemiphaedusa antuensis, Nordsieck, 2005**

*Hemiphaedusa* (*Hemizaptyx*) *antuensis chichiensis* Nordsieck, 2005a: 49–50 (pl. 3, fig. 23).

Gastropoda, Clausiliidae

*Paratype*: MZSP 95497.

*Locality*: Taiwan, Hualien Co., W of Chi Chi (ca. 40 km S of Hualien), 23°42.726' N, 121°32.596' E (type locality), 13 Apr. 2003.

*Preservation*: Dry.

*Remarks*: Former Jens Hemmen Collection. The specimen listed above is a remainder of a 10-specimen paratype lot deposited by Nordsieck in Hemmen's collection.

***chodo*, *Triplodon* Mansur & Pimpão, 2008**

*Triplodon chodo* Mansur & Pimpão, 2008: 112–115 (figs 1–6).

Bivalvia, Hyriidae

*Paratype*: MZSP 86012.

*Locality*: Brazil, Amazonas, Novo Aripuanã, River Aripuanã, between 06°00'42.3" S, 60°11'42.7" W and 06°00'21.7" S, 60°11'45.1" W, 9 Sep. 2004.

*Collector*: D.M. Pimpão and Sotero.

*Preservation*: Dry

*Remarks*: Former INPA 331a.

***christae*, *Opisthostoma* Maassen, 2001**

*Opisthostoma (Plectostoma) christae* Maassen, 2001: 52–53 (figs 3, 10–11).

Gastropoda, Diplommatinidae

*Paratype*: MZSP 95472 (Fig. 2A–B).

*Locality*: Malaysia, Kelantan, rd. #8, Gua Musang to Machang, the right side of km 24.9, 04°55.022' N, 102°06.934' E.

*Preservation*: Dry.

*Remarks*: Former Jens Hemmen Collection. Locality and measurements compare fittingly with a 20-specimen paratype lot originally deposited in Hemmen's collection (Maassen 2001).

***coltrorum*, *Conasprelloides* Petuch & Myers, 2014**

*Conasprelloides coltrorum* Petuch & Myers, 2014a: 36–37 (fig. 1A–B).

Gastropoda, Conidae

*Holotype*: MZSP 116141.

*Locality*: Brazil, Espírito Santo, off Vitória, 60 m depth.

*Collectors*: Local fishermen.

*Preservation*: Dry.

*Remarks*: This species was recombined as *Conus coltrorum* by Puillandre *et al.* (2015).

***coltrorum*, *Spixia* Simone, 2012**

*Spixia coltrorum* Simone, 2012b: 433–435 (figs 9–14).

Gastropoda, Orthalicidae

*Holotype*: MZSP 103920.

*Paratype*: MZSP 103921.

*Paratypes (2 spc)*: MZSP 103922.

*Paratypes (8 spc)*: MZSP 103923.

*Locality*: Brazil, Bahia, Santa Maria da Vitória, ~13°24' S, 44°12' W, ~460 m altitude (type locality), Jan. 2012.

*Collector*: J. Coltro.

*Preservation*: Dry.



***columbaris*, *Cranopsis* Simone & Cunha, 2014**

*Cranopsis columbaris* Simone & Cunha, 2014: 452 (figs 84–89).

Gastropoda, Fissurellidae

*Holotype*: MZSP 107719.

*Paratypes* (3 *spc*): MZSP 105520.

*Locality*: Brazil, Ceará, off Fortaleza, Canopus Bank, 2°12'43" S, 38°18'52" W, 250 m depth (type locality), Aug. 2005.

*Collectors*: J. Coltro.

*Preservation*: Dry.

***conica*, *Lacunopsis* Brandt, 1968**

*Lacunopsis conica* Brandt, 1968: 249–250 (pl. 9, fig. 36 + text fig. 27).

Gastropoda, Pomatiopsidae

*Probable paratype*: MZSP 95495 (Fig. 4E–F).

*Locality*: Laos, Mekong River, rapids 2 km S of Khone (type locality), 28 Feb. 1968.

*Preservation*: Dry.

*Remarks*: Former Jens Hemmen Collection. Data on the specimen's label correspond to the lot originally catalogued as SMRL 16216. The specimen listed above is a possible remainder of a 30-specimen paratype lot left by the author under the care of the SMRL.

***conifera*, *Chrysallida* Pimenta, 2012**

*Chrysallida conifera* Pimenta, 2012: 441–444 (figs 13–28).

Gastropoda, Pyramidellidae

*Paratype*: MZSP 99920.

*Paratype*<sup>1</sup>: MZSP 99921.

*Paratype*<sup>2</sup>: MZSP 99923.

*Paratype*<sup>3</sup>: MZSP 99924.

*Localities*: Brazil, Rio de Janeiro, 25°43.5' S, 46°2.5' W, REVIZEE Sul sta. 6653, 155 m depth; 1) 24°00.95' S, 43°55.54' W, REVIZEE Sul sta. 6662, 135 m; 2–3) 24°17.13' S, 44°12.15' W, REVIZEE Sul sta. 6666, 163 m; all collected between Nov. 1997 and Jan. 1998.

*Collector*: R/V *W. Besnard*.

*Preservation*: Dry.

***corallina*, *Kora* Simone, 2012**

*Kora corallina* Simone, 2012b: 432–433 (figs 1–8).

Gastropoda, Orthalicidae

*Holotype*: MZSP 103910.

*Paratype*: MZSP 103911.

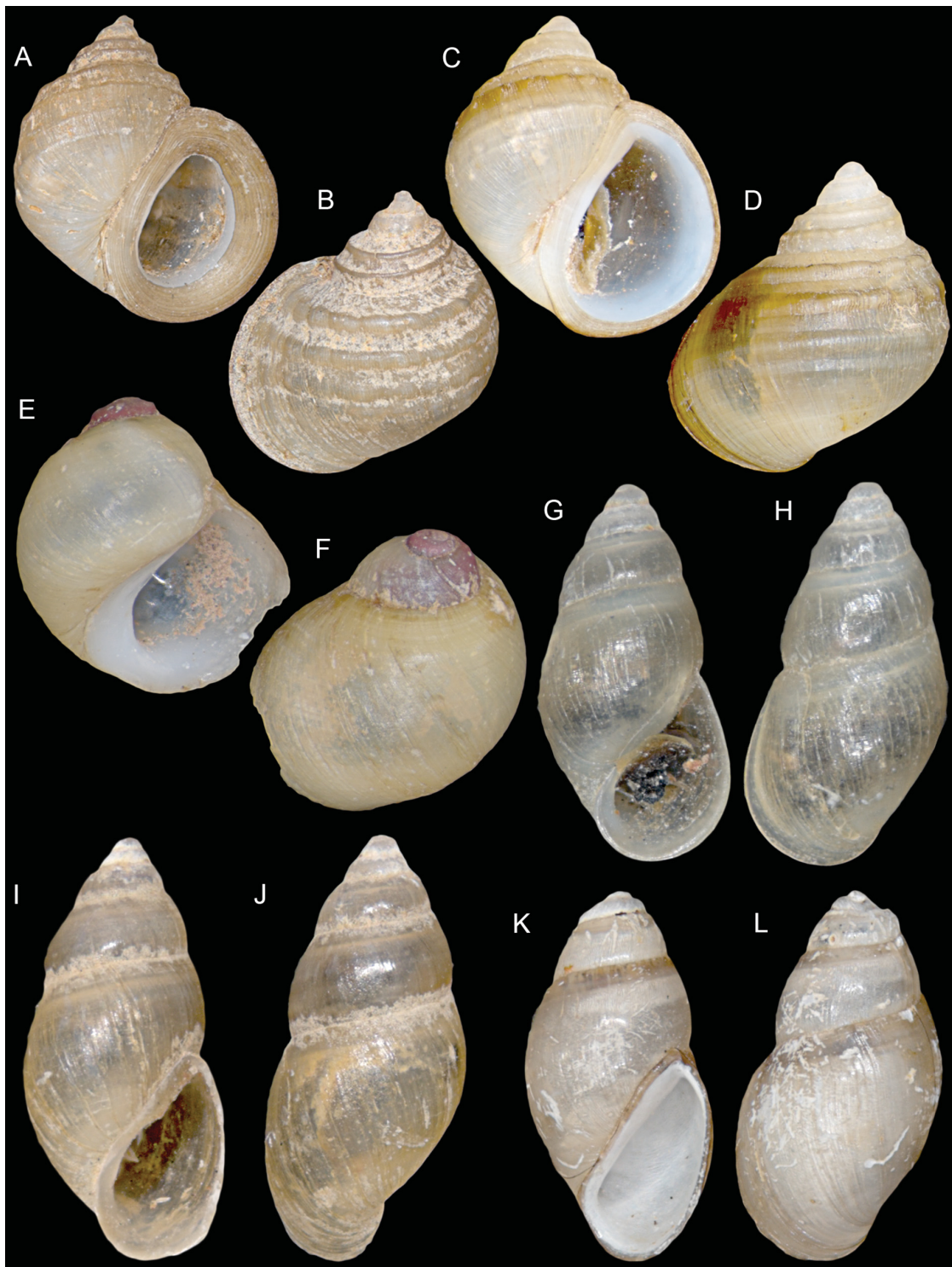
*Paratype*: MZSP 103912.

*Paratypes* (32 *spc*): MZSP 103913.

*Locality*: Brazil, Bahia, Santa Maria da Vitória, ~13°24' S, 44°12' W, ~460 m altitude (type locality), Jan. 2012.

*Collector*: J. Coltro.

*Preservation*: Dry.



**Fig. 4.** A–B. *Jullienia munensis* Brandt, 1974, probable paratopotype MZSP 95482, L = 5.9 mm, W = 5.2 mm. C–D. *Jullienia rolfbrandti* Temcharoen, 1971, probable paratype MZSP 95463, L = 7.3 mm, W = 6 mm. E–F. *Lacunopsis conica* Brandt, 1968, probable paratype MZSP 95495, L = 5.3 mm, W = 4.9 mm. G–H. *Hubendickia microsculpta* Brandt, 1968, probable paratype MZSP 95945, L = 4.35 mm, W = 1.71 mm. I–J. *Manningiella polita* Brandt, 1970, probable paratype MZSP 95475, L = 4.2 mm, W = 2 mm. K–L. *Manningiella rolfbrandti* Temcharoen, 1971, probable paratype MZSP 95924, L = 4.2 mm, W = 2.2 mm.

***corpus*, *Habeas* Simone, 2013**

*Habeas corpus* Simone, 2013b: 520 (figs 1–6, 16–18).

Gastropoda, Diplommatinidae

*Holotype*: MZSP 110000.

*Paratype*<sup>1</sup>: MZSP 106745.

*Paratype*<sup>2</sup>: MZSP 106774.

*Localities*: Brazil, Bahia, Carinhanha, Serra do Ramalho, ~400 m elevation, sta. LES2302, Gruna das Três Cobras, 13°37'07.6" S, 43°45'11.5" W, 10 Sep. 2008; 1) same, sta. LES2304, Gruna do Cesário, 13°31'06.1" S, 43°38'26.2" W, 12 Sep. 2008; 2) type locality, 10 Sep. 2008.

*Collector*: M.E. Bichuette.

*Preservation*: Dry.

***crooki*, *Pachydrobia* Brandt, 1968**

*Pachydrobia crooki* Brandt, 1968: 228–229 (pl. 8, fig. 12 + text fig. 10).

Gastropoda, Pomatiopsidae

*Probable paratype*: MZSP 95469 (Fig. 2G–H).

*Locality*: Thailand, Ubon Province, Mekong River at Bandan (type locality), 7 Mar. 1967.

*Preservation*: Dry.

*Remarks*: Former Jens Hemmen Collection. Measurements and data on the specimen's label correspond to the lot originally catalogued as SMRL 3431. The specimen listed above is a possible remainder of a 30-specimen paratype lot left by the author under the care of the SMRL.

***crooki*, *Wykoffia* Brandt, 1968**

*Wykoffia crooki* Brandt, 1968: 245–247 (pl. 9, fig. 33 + text fig. 24).

Gastropoda, Pomatiopsidae

*Probable paratype*: MZSP 95909.

*Locality*: East Thailand, Mekong River at Bandan (type locality).

*Preservation*: Dry.

*Remarks*: Former Jens Hemmen Collection. Measurements and data on the specimen's label correspond to the lot originally registered under the number SMRL 3463. The specimen listed above is a possible remainder of a 10-specimen paratype lot left by the author under the care of the SMRL. This species was recombined as *Jullienia crooki* by Davis (1979).

***curupira*, *Yoldiella* Benaim & Absalão, 2011**

*Yoldiella curupira* Benaim & Absalão, 2011: 523–525 (fig. 8A–H).

Bivalvia, Yoldiidae

*Paratypes* (2 valves): MZSP 93359.

*Locality*: Brazil, Rio de Janeiro, Campos Basin, sta. 41, 22°39'34" S, 40°08'22" W, 1200 m depth.

*Collector*: R/V *Astro-Garoupa*.

*Preservation*: Dry.

***cylindrata*, *Eulimella* Pimenta, Santos & Absalão, 2011**

*Eulimella cylindrata* Pimenta, Santos & Absalão, 2011: 30 (figs 26–31).

Gastropoda, Pyramidellidae

*Paratypes* (2 *spc*): MZSP 101568.

*Locality*: Brazil, off Espírito Santo, 21°32' S, 40°09' W, sta. CB96, 295–300m depth (type locality), 31 May 1987.

*Collectors*: P. Bouchet, J.H. Leal and B. Métivier.

*Preservation*: Dry.

*Remarks*: Former MNHN, Paris.

***cylindrica*, *Hubendickia* Brandt, 1974**

*Hubendickia cylindrica* Brandt, 1974: 96–97 (pl. 7, fig. 19).

Gastropoda, Pomatiopsidae

*Probable paratype*: MZSP 95944 (Fig. 3C–D).

*Locality*: Thailand, Ubon Province, Mekong River at Bandan (type locality), 15 Feb. 1970.

*Preservation*: Dry.

*Remarks*: Former Jens Hemmen Collection. Given its compatible measurements, the specimen listed above is a possible remainder of a 100-specimen paratype lot from the above-mentioned locality, originally catalogued as SMRL 5099. According to Brandt (1974), these specimens were left under the care of the SMRL.

***damasomonteiroi*, *Jaspidiconus* Petuch & Myers, 2014**

*Jaspidiconus damasomonteiroi* Petuch & Myers, 2014b: 35 (text fig. + fig. 3A–F).

Gastropoda, Conidae

*Holotype*: MZSP 116528.

*Paratype*: MZSP 116529.

*Locality*: Brazil, Ceará State, off Camocim, 40 m depth.

*Preservation*: Dry.

*Remarks*: This species was recombined as *Conasprella damasomonteiroi* by Puillandre *et al.* (2015).

***danieli*, *Astraea* Alf & Kreipl, 2006**

*Astraea (Astralium) danieli* Alf & Kreipl, 2006: 91 (figs 1–3).

Gastropoda, Turbinidae

*Paratype*: MZSP 95919 (Fig. 1A–B).

*Locality*: Indonesia, Bali, Tanah Lot. In shallow water on rocks with algae, collected in 1978.

*Collectors*: A. Alf and K. Kreipl.

*Preservation*: Dry.

*Remarks*: One of the five paratypes deposited in Jens Hemmen's Collection by Alf & Kreipl. This species was recombined as *Astralium danieli* by Alf & Kreipl (2011).

***data*, *Habeas* Simone, 2013**

*Habeas data* Simone, 2013b: 520–522 (figs 7–10, 16, 18).

Gastropoda, Diplommatinidae

*Holotype*: MZSP 106810.

*Paratypes*<sup>1</sup> (2 spc): MZSP 106814.

*Paratype*<sup>2</sup>: MZSP 109965.

*Paratype*<sup>3</sup>: MZSP 110159.

*Localities*: Brazil, Bahia, Carinhanha, Serra do Ramalho, ~400 m elevation, sta. LES2301, Gruna do Cesário, 13°31'06.1" S, 43°38'26.2" W, 11 Sep. 2008; 1) sta. LES2300, Gruna Vila Nova, 13°33'14.3" S, 43°52'40.7" W; 2) sta. LES2304, 12 Sep. 2008; 3) 12 Sep. 2008.

*Collector*: M.E. Bichuette.

*Preservation*: Dry.

***decrezca*, *Austromitra* Simone & Cunha, 2012**

*Austromitra decrezca* Simone & Cunha, 2012: 765–766 (fig. 7A–D).

Gastropoda, Costellariidae

*Paratype*: MZSP 102687.

*Locality*: Brazil, Espírito Santo, off Itaúnas, Abrolhos Slope, 18°56' S, 37°52' W, MD55 sta. DC82, 85–105 m depth, 28 May 1987.

*Collectors*: P. Bouchet, J.H. Leal and B. Métivier.

*Preservation*: Dry.

***denudata*, *Profundisepta* Simone & Cunha, 2014**

*Profundisepta denudata* Simone & Cunha, 2014: 457–458 (figs 109–115).

Gastropoda, Fissurellidae

*Holotype*: MZSP 105507.

*Paratype*: MZSP 105508.

*Locality*: Brazil, São Paulo, continental slope off Ubatuba, 24°12' S, 40°23' W, 3049 m depth, R/V *W. Besnard* sta. PI (type locality), 1 Jun. 1971.

*Collectors*: Researchers onboard R/V *W. Besnard*.

*Preservation*: Dry.

***diabula*, *Oenopota* Figueira & Absalão, 2010**

*Oenopota diabula* Figueira & Absalão, 2010b: 475–476 (fig. 1D–F).

Gastropoda, Mangeliidae

*Paratype*<sup>1</sup>: MZSP 90706.

*Paratypes*<sup>2</sup> (2 *spc*): MZSP 90707.

*Localities*: Brazil, Rio de Janeiro, Campos Basin; 1) sta. OPI#75, 22°31'28" S, 40°03'50" W, 1050 m depth, 19 Nov. 2002; 2) sta. OPII#84, 22°26'27" S, 39°58'51" W, 1050 m, 20 Jun. 2003.

*Collector*: R/V *Astro Garoupa*.

*Preservation*: Dry.

***domaneschii*, *Cyamiocardium* Passos & Machado, 2014**

*Cyamiocardium domaneschii* Passos & Machado, 2014: 123–126 (figs 1–5).

Bivalvia, Cyamiidae

*Paratypes*<sup>1</sup> (5 *spc*): MZSP 114207.

*Paratypes*<sup>2</sup> (8 *spc*): MZSP 114208.

*Paratypes*<sup>3</sup> (7 *spc*): MZSP 114209.

*Localities*: Brazil, off Rio de Janeiro and Espírito Santo; 1–2) sta. HAB11 A-01 R3, 22°55'7.555" S, 42°0'49.218" W; 3) sta. HAB11 D-02 R2, 22°12'53.045" S, 40°51'12.031" W.

*Collectors*: HABITATS Project researchers.

*Preservation*: Dry.

***ejuncida*, *Eulimella* Pimenta, Santos & Absalão, 2011**

*Eulimella ejuncida* Pimenta, Santos & Absalão, 2011: 32–33 (figs 40–47).

Gastropoda, Pyramidellidae

*Holotype*: MZSP 99916.

*Paratypes* (4 *spc*): MZSP 99917.

*Paratypes*<sup>1</sup> (5 *spc*): MZSP 99918.

*Paratypes*<sup>2</sup> (3 *spc*): MZSP 99919.

*Locality:* Brazil, off São Paulo, 25°46' S, 45°28.8' W, PADCT sta. 6631, 164 m depth (type locality); 1) off Paraná, 24°00.95' S, 43°55.54' W, REVIZEE sta. 6662, 135 m; 2) off Rio de Janeiro, 23°49.07' S, 42°46.81' W, PADCT sta. 6553, 225 m.

*Preservation:* Dry.

***elegantissima*, *Symptychiella* Nordsieck, 2005**

*Symptychiella* (*Divanenia*) *elegantissima* Nordsieck, 2005b: 213–214 (fig. 22).

Gastropoda, Clausiliidae

*Paratype:* MZSP 95488.

*Locality:* Peru, Dept. San Martín, path from Palestina to Cueva Huacharos de Palestina (ca. 23 km NW of Rioja), 05°56.403' S, 77°20.693' W, 26 Mar. 2005.

*Collector:* J. Hemmen.

*Preservation:* Dry.

*Remarks:* Former Jens Hemmen Collection. The specimen listed above is a remainder of a 13-specimen paratype lot deposited by Nordsieck in Hemmen's collection.

***elisabethae*, *Codringtonia* (*Codringtonia*) Subai, 2005**

*Codringtonia* (*Codringtonia*) *elisabethae* Subai, 2005: 71–74 (pl. 5, fig. 29 + text figs 2, 10, 11).

Gastropoda, Helicidae

*Probable paratype:* MZSP 95950.

*Locality:* Greece, NE Peloponnese, Argos, castle, 28 Mar. 1985.

*Collector:* J. Hemmen.

*Preservation:* Dry.

*Remarks:* Former Jens Hemmen Collection. As per measurements and label data, the specimen listed above is a possible remainder a three-specimen paratype lot collected by Hemmen. According to Subai (2005: 74), these specimens should have been sent to W.J.M. Maassen's private collection.

***elisae*, *Lucapina* Costa & Simone, 2006**

*Lucapina* *elisae* Costa & Simone, 2006: 1–4 (figs 1–18).

Gastropoda, Fissurellidae

*Paratypes* (3 spc): MZSP 53934.

*Paratypes* (9 spc): MZSP 61229.

*Paratypes* (3 spc): MZSP 67299.

*Paratype:* MZSP 78194.

*Locality:* Brazil, Ceará, off Fortaleza, Canopus Bank, 02°14'25" S, 38°22'50" W, 240–260 m depth, Nov. 2005.

*Collectors:* J. Coltro and P.M. Costa.

*Preservation:* Dry; MZSP 61229 is preserved in 70% ethanol (soft parts).

***enceladus*, *Benthomangelia* Figueira & Absalão, 2010**

*Benthomangelia* *enceladus* Figueira & Absalão, 2010a: 735–736 (fig. 1D–F).

Gastropoda, Mangeliidae

*Paratype:* MZSP 90703.

*Locality:* Brazil, Rio de Janeiro state, Campos Basin, 22°04'33" S, 39°852'04" W, 1050 m depth, sta. OPI #50, 24 Nov. 2002.

*Collector:* R/V *Astro Garoupa*.

*Preservation:* Dry.

***enigmatica*, *Cranopsis* Simone & Cunha, 2014**

*Cranopsis enigmatica* Simone & Cunha, 2014: 444–445 (figs 42–47).

Gastropoda, Fissurellidae

*Paratype*: MZSP 102941.

*Locality*: Brazil, Espírito Santo, off Regência, Abrolhos Slope, 19°40' S, 37°48' W, 790–940 m, MD55 sta. CB77 (type locality), 27 May 1987.

*Collectors*: P. Bouchet, J.H. Leal and B. Métivier.

*Preservation*: Dry.

*Remarks*: Former MNHN, Paris.

***equatorialis*, *Thylaeodus* Spotorno & Simone, 2013**

*Thylaeodus equatorialis* Spotorno & Simone, 2013: 89–91 (figs 1–18).

Gastropoda, Vermetidae

*Paratypes*<sup>1</sup> (5 *spc*): MZSP 82314.

*Paratypes*<sup>2</sup> (3 *spc*): MZSP 86531.

*Paratypes*<sup>3</sup> (85 *spc*): MZSP 86566.

*Paratypes*<sup>4</sup> (32 *spc*): MZSP 86627.

*Paratypes*<sup>5</sup> (32 *spc*): MZSP 86628.

*Paratypes*<sup>6</sup> (2 *spc*): MZSP 86676.

*Paratypes*<sup>7</sup> (3 *spc*): MZSP 87469.

*Locality*: Brazil, Pernambuco, São Pedro e São Paulo Archipelago, Belmonte Inlet, Enseada Beach, 00°55'01" N, 29°20'44" W, 3–10 m depth (type locality); 1) Mar. 2005; 2) 28 May 2007; 3) 7 Jun. 2007; 4) 7 Nov. 2007; 5) 7 Nov. 2007; 6) 9 Nov. 2007; 7) 27 Oct. 2007.

*Collectors*: L.R. Simone and C.M. Cunha.

*Preservation*: All 70% ethanol; single specimen (MZSP 86566) is preserved dry.

***ericmonnieri*, *Jaspidiconus* Petuch & Myers, 2014**

*Jaspidiconus ericmonnieri* Petuch & Myers, 2014a: 42 (fig. 2G–I).

Gastropoda, Conidae

*Holotype*: MZSP 116144.

*Locality*: Brazil, Espírito Santo State, off Vitória, 60 m depth.

*Collectors*: Local fishermen.

*Preservation*: Dry.

*Remarks*: This species was recombined as *Conasprella ericmonnieri* by Puillandre *et al.* (2015).

***exiguum*, *Eulimastoma* Pimenta, 2012**

*Eulimastoma exiguum* Pimenta, 2012: 444 (figs 19–24).

Gastropoda, Pyramidellidae

*Paratypes* (4 *spc*): MZSP 105121.

*Locality*: Brazil, Rio de Janeiro, East of Cape São Tomé, 21°35' S, 40°31' W, MD55 sta. CB98, 900 m depth, 31 May 1987.

*Collector*: P. Bouchet, J.H. Leal and B. Métivier.

*Preservation*: Dry.

*Remarks*: Former MNHN, Paris.

***fetidus*, *Leiostracus* Salvador & Cavallari, 2014**

*Leiostracus fetidus* Salvador & Cavallari, 2014: 40 (figs 2–8).

Gastropoda, Orthalicidae

*Holotype*: MZSP 112123.

*Paratypes* (13 *spc*): MZSP 107577.

*Locality*: Brazil, Bahia, Atlantic Rainforest fragment near the city of Canavieiras, 15°40' S, 39°02' W (type locality), Jun. 2012.

*Collectors*: A. Bianchi.

*Preservation*: Dry.

***fischerpiettei*, *Paraprososthenia* Brandt, 1970**

*Paraprososthenia fischerpiettei* Brandt, 1970: 187–188 (pl. 13, fig. 5 + text fig. 5).

Gastropoda, Pomatiopsidae

*Probable paratype*: MZSP 95496 (Fig. 2K–J).

*Locality*: Laos, Sedone River at Khong Sedone, 23 Feb. 1968.

*Collector*: P. Temcharoen.

*Preservation*: Dry.

*Remarks*: Former Jens Hemmen Collection. Measurements and data on the specimen's label correspond to the lot originally catalogued as SMRL 16118. The specimen listed above is a possible remainder of a 50-specimen paratype lot from the above-mentioned locality. According to Brandt (1970), these specimens were left under the care of the SMRL.

***gaiophanis*, *Microlinices* Simone, 2014**

*Microlinices gaiophanis* Simone, 2014: 580–582 (fig. 8H–K).

Gastropoda, Naticidae

*Paratype*: MZSP 105127.

*Locality*: Brazil, Rio de Janeiro, off Araruama, 23°54' S, 42°10' W, MD55 sta. CB106, 830 m depth (type locality), 2 Jun. 1987.

*Collectors*: P. Bouchet, J.H. Leal and B. Métivier.

*Preservation*: Dry.

*Remarks*: Former MNHN, Paris.

***gaucha*, *Eledone* Haimovici, 1988**

*Eledone gaucha* Haimovici, 1988: 82–84 (figs 2–14).

Cephalopoda, Octopodidae

*Paratypes* (2 *spc*): MZSP 25242 (Fig. 7E).

*Locality*: Brazil, Rio Grande do Sul, cruise 10/83, sta. 51, trawl 29, 33°43' S, 52°13' W, 74 m depth.

*Collector*: R/V *Atlântico Sul*, M. Haimovici.

*Preservation*: 70% ethanol.

***gibbosula*, *Temesa* Nordsieck, 2005**

*Temesa gibbosula* Nordsieck, 2005b: 208–209 (fig. 10).

Gastropoda, Clausiliidae

*Paratype*: MZSP 95926.

*Locality*: Peru, Junin Department, c. 2 km from Tarma to La Oroya, c. 4000 m altitude, 11°24.283' S, 75°49.048' W (type locality), 15 Oct. 2004.



*Collector*: J. Hemmen.

*Preservation*: Dry.

*Remarks*: Former Jens Hemmen Collection. The specimen listed above is a remainder of a 9-specimen paratype lot deposited by Nordsieck in Hemmen's collection. This species was recombined as *Parabalea gibbosula* by Nordsieck (2010).

***gilbertus*, *Rhinus* Simone & Casati, 2013**

*Rhinus gilbertus* Simone & Casati, 2013: 153–154 (figs 23–34).

Gastropoda, Simpulopsidae

*Holotype*: MZSP 112449.

*Paratypes*<sup>1</sup> (27 *spc*): MZSP 111827.

*Paratypes*<sup>2</sup> (50 *spc*): MZSP 111839.

*Paratypes*<sup>3</sup> (9 *spc*): MZSP 111844.

*Localities*: Brazil, Piauí, Serra da Capivara, Coronel José Dias Municipality, close to Sítio do Mocó Town, Toca de Cima dos Pilão Cave, 8°51'47.10" S, 42°33'26.96" W; 1–2) same, sta. P2; 3) same, sta. P1.

*Collector*: R. Casati.

*Preservation*: Dry.

*Remarks*: Specimens in the lot MZSP 111835 are listed as paratypes of *Rhinus gilbertus* by Simone & Casati (2013, original description), but are in fact topotypes of *C. capivara*, which is described in the same paper. Simone & Casati (2013) simultaneously reported the catalogue number MZSP 111845 among the paratypes of *Rhinus gilbertus* and *C. capivara*. This catalogue number does not contain paratypes of *R. gilbertus*; this information is incorrect in the original description and should be disregarded.

***gili*, *Pazinotus* Costa & Pimenta, 2012**

*Pazinotus gili* Costa & Pimenta, 2012: 121–123 (figs 5–6).

Gastropoda, Muricidae

*Paratypes* (2 *spc*): MZSP 70282.

*Paratypes* (3 *spc*): MZSP 70335.

*Locality*: Brazil, Ceará, southern slope of Canopus Bank, 02°14'25" S, 38°22'50" W, 240–260 m depth (type locality), Oct.–Nov. 2005.

*Collector*: J. Coltro.

*Preservation*: Dry.

***gochenouri*, *Hubendickia* Brandt, 1968**

*Hubendickia gochenouri* Brandt, 1968: 238 (pl. 8, fig. 25).

Gastropoda, Pomatiopsidae

*Probable paratype*: MZSP 95943.

*Locality*: Thailand, Mekong at Ban Kum (type locality), 5 Sep. 1967.

*Preservation*: Dry.

*Remarks*: Former Jens Hemmen Collection. Data on the specimen's label correspond to the lot originally catalogued as SMRL 3385. The specimen listed above is a possible remainder of a 10-specimen paratype lot left by the author under the care of the SMRL.

***goudi*, *Teracharopa* Maassen, 2000**

*Teracharopa goudi* Maassen, 2000: 142–144 (figs 9–10).

Gastropoda, Charopidae

*Probable paratype*: MZSP 95494 (Fig. 7A–B).

*Locality*: Indonesia, West Sumatra, SE of Bukit Tingii, 3 km E of Lintau, Cave Gua Pangian, 00°28'19.5" S, 100°45'11.7" E (type locality).

*Preservation*: Dry.

*Remarks*: Former Jens Hemmen Collection. Locality data and measurements compare fittingly with a 20-specimen paratype series originally deposited in the authors' reference collection (Maassen 2000). Label bears a paratype status annotation.

***hansrosaorum*, *Hoplodoris* Domínguez, García & Troncoso, 2006**

*Hoplodoris hansrosaorum* Domínguez, García & Troncoso, 2006: 150–152 (figs 1–14).

Gastropoda, Discodorididae

*Holotype*: MZSP 52190.

*Locality*: Brazil, Rio de Janeiro, Arraial do Cabo, Cabo Frio Island, intertidal zone (type locality), 28 Jul. 1999.

*Collectors*: J. Troncoso and García.

*Preservation*: 70% ethanol.

***hazinorum*, *Conasprelloides* Petuch & Myers, 2014**

*Conasprelloides hazinorum* Petuch & Myers, 2014b: 31 (text fig. + fig. 1A–F).

Gastropoda, Conidae

*Holotype*: MZSP 116523.

*Paratype*: MZSP 116524.

*Locality*: Brazil, Sergipe State, off Pirambu, 50 m depth.

*Preservation*: Dry.

*Remarks*: This species was recombined as *Conus hazinorum* by Puillandre *et al.* (2015).

***helenae*, *Anachis* Costa, 1983**

*Anachis helenae* Costa, 1983: 95–98 (figs 1–3).

Gastropoda, Columbelloidea

*Holotype*: MZSP 102531 (Fig. 5E–F).

*Paratype*<sup>1</sup>: MZSP 102534.

*Paratype*<sup>2</sup>: MZSP 102539.

*Localities*: Brazil, Rio de Janeiro, Niterói off Boa Viagem Island, 22°54'43" S, 43°07'32" W, 8 m depth, Aug. 1979; 1–2) Brazil off Amapá State, 56 m, 1 May 1968.

*Collectors*: P. M. Costa; 1–2) R/V *Almirante Saldanha*.

*Preservation*: Dry. All specimens including the holotype suffered the effects of Bynesian decay due to poor storage conditions prior to donation. Specimens were reconditioned according to the recommendations of Cavallari *et al.* (2014).

*Remarks*: Former USU. The holotype was formerly catalogued as USU 215; paratype<sup>1</sup> as USU 237; paratype<sup>2</sup> as USU 238. The specimens listed above were donated to the MZSP in 2011.

***henriquei*, *Coltroconus* Petuch & Myers, 2014**

*Coltroconus henriquei* Petuch & Myers, 2014a: 40 (fig. 2A–C).

Gastropoda, Conidae

*Holotype*: MZSP 116143.

*Locality*: Brazil, Bahia State, east of the Abrolhos Platform, western side of Royal Charlotte Bank, 35 m depth.



**Fig. 5.** A–B. *Lithoglyphopsis aperta* Temcharoen, 1971, Probable paratype MZSP 95942, L = 2.75 mm, W = 2 mm. C–D. *Turritella ahiparana* Powell, 1927, Probable paratype MZSP 101757, L = 12.7 mm, W = 4.2 mm. E–F. *Anachis helenae* Costa, 1983, holotype MZSP 102531, L = 10.3 mm, W = 4.5 mm. G–H. *Bullata analuciaae* Souza & Coover, 2001, paratype MZSP 28243, L = 31.8 mm, W = 19.7 mm. I–J. *Terebra intumescyra* Lima, Tenório & Barros, 2007, paratype MZSP 84237, L = 5.4 mm, W = 2 mm. K–L. *Terebra simonei* Lima, Tenório & Barros, 2007, paratype MZSP 84235, L = 5.4 mm, W = 1.4 mm. M–N. *Andiniella flammulata unicolor* Nordsieck, 2005, paratype MZSP 95490, L = 12.5 mm, W = 3.8 mm. O–P. *Boettgeria jensi* Neubert & Groh, 1998, paratype MZSP 95947, L = 11.3 mm, W = 2.8 mm.

*Preservation*: Dry.

*Remarks*: This species was recombined as *Conasprella henriquei* by Puillandre *et al.* (2015).

***hemitoma*, *Hemimarginula* Simone & Cunha, 2014**

*Hemimarginula hemitoma* Simone & Cunha, 2014: 463–464 (figs 140–151).

Gastropoda, Fissurellidae

*Paratype*: MZSP 101247.

*Paratypes*<sup>1</sup> (2 *spc*): MZSP 102947.

*Paratypes*<sup>2</sup> (3 *spc*): MZSP 102948.

*Locality*: Brazil, off Espírito Santo, Trindade Island, Andradas Beach, 20°30'50" S, 29°18'20" W, 0–1 m depth; 1) Espírito Santo, off Itaúnas, Abrolhos Slope, 18°50' S, 37°57' W, 60 m, MD55 sta. DC83 (type locality), 28 May 1987; 2) 18°56' S, 37°52' W, 85–105 m, MD55 sta. DC82, 28 May 1987.

*Collectors*: P. Bouchet, J.H. Leal & B. Métivier.

*Preservation*: Dry.

*Remarks*: Former MNHN, Paris.

***hemmeni*, *Cyclonena* Nordsieck, 2005**

*Cyclonena hemmeni* Nordsieck, 2005b: 206 (fig. 5).

Gastropoda, Clausiliidae

*Paratype*: MZSP 95477 (Fig. 6A–B).

*Locality*: Peru, Cajamar Department, c. Km 148.2 rd. Pacasmayo-Cajamarca, 2500 m altitude (type locality), 27 Oct. 2004.

*Collector*: J. Hemmen.

*Preservation*: Dry.

*Remarks*: Former Jens Hemmen Collection. The specimen listed above is a remainder of a 28-specimen paratype lot deposited by Nordsieck in Hemmen's collection.

***herndli*, *Jaspidiconus* Petuch & Myers, 2014**

*Jaspidiconus herndli* Petuch & Myers, 2014a: 42–43 (fig. 3A–C).

Gastropoda, Conidae

*Holotype*: MZSP 116151.

*Locality*: The Bahamas, western Great Bahama Bank, Bimini Chain, 3 km due east of Victory Cay, 5 m depth.

*Preservation*: Dry.

*Remarks*: This species was recombined as *Conasprella herndli* by Puillandre *et al.* (2015).

***honkerorum*, *Gradiconus* Petuch & Myers, 2014**

*Gradiconus honkerorum* Petuch & Myers, 2014a: 37 (fig. 1C–D).

Gastropoda, Conidae

*Holotype*: MZSP 116148.

*Locality*: Bahamas, Bahama Bank, Abaco Islands, Green Turtle Cay, 2 m depth.

*Collector*: P. Honker.

*Preservation*: Dry.

*Remarks*: This species was recombined as *Conus honkerorum* by Puillandre *et al.* (2015).



**Fig. 6.** A–B. *Cyclonena hemmeni* Nordsieck, 2005, paratype MZSP 95477, L = 18 mm, W = 4 mm. C–D. *Cylindronena pangamitoensis pongoensis* Nordsieck, 2005, paratype MZSP 95470, L = 13.2 mm, W = 3.6 mm. E–F. *Neniella strictecostata* Nordsieck, 2005, paratype MZSP 95947, L = 16.8 mm, W = 3.3 mm. G–H. *Steeriana nivea* Nordsieck, 2005, paratype MZSP 95479, L = 16.9 mm, W = 4.6 mm. I–K. *Cernuella selmaniana* Brandt, 1959, probable paratype MZSP 95484, L = 11.6 mm, W = 16.4 mm. L–N. *Trochoidea regimaensis* Brandt, 1959, probable paratype MZSP 95910, L = 10.2 mm, W = 12 mm.

***hospitalis*, *Hydrorissoia* Brandt, 1968**

*Hydrorissoia hospitalis* Brandt, 1968: 244–245 (pl. 9, fig. 32 + text fig. 23).

Gastropoda, Pomatiopsidae

*Probable paratype*: MZSP 95949 (Fig. 3I–J).

*Locality*: Thailand, Khong Island, Mekong at Khong Village (type locality), 22 Feb. 1968.

*Preservation*: Dry.

*Remarks*: Former Jens Hemmen Collection. Data on the specimen's label correspond to the lot originally catalogued as SMRL 3479. The specimen listed above is a possible remainder of 3 paratypes left by the author under the care of the SMRL. This species is a synonym of *Hydrorissoia gracilis* Brandt, 1968 according to Davis (1979).

***ibitingus*, *Microlinices* Simone, 2014**

*Microlinices ibitingus* Simone, 2014: 573–574 (figs 4A–G, 5A–F, 11F–G).

Gastropoda, Naticidae

*Paratypes* (3 *spc*): MZSP 105250.

*Paratypes*<sup>1</sup> (3 *spc*): MZSP 105251.

*Paratypes*<sup>2</sup> (6 *spc*): MZSP 105252.

*Localities*: Brazil, Espírito Santo, off Regência, 19°40' S, 37°48' W, MD55 sta. CB77, 790–940 m depth (type locality), 27 May 1987; 1) off Itaúnas, Abrolhos Slope, 18°59' S, 37°48' W, MD55 sta. DC73, 607–620 m, 27 May 1987; 2) off Conceição da Barra, Abrolhos Slope, 18°58' S, 37°49' W, MD55 sta. CB76, 637 m, 27 May 1987.

*Collectors*: P. Bouchet, J.H. Leal and B. Métivier.

*Preservation*: Dry.

*Remarks*: Former MNHN, Paris.

***icosisculpta*, *Emarginula* Simone & Cunha, 2014**

*Emarginula icosisculpta* Simone & Cunha, 2014: 455–456 (figs 135–139).

Gastropoda, Fissurellidae

*Paratype*: MZSP 102949.

*Localities*: Brazil, Espírito Santo, Trindade Island, Enseada dos Portugueses, 20°30'15" S, 29°18'46" W, 10–12 m depth, MD55 sta. 1 (type locality), May 1987.

*Collectors*: P. Bouchet, J.H. Leal and B. Métivier.

*Preservation*: Dry.

*Remarks*: Former MNHN, Paris.

***insolita*, *Clinispira* Simone & Casati, 2013**

*Clinispira insolita* Simone & Casati, 2013: 147–149 (figs 2–15).

Gastropoda, Odontostomidae

*Holotype*: MZSP 111847.

*Paratypes*<sup>1</sup> (84 *spc*): MZSP 111828.

*Paratypes*<sup>2</sup> (5 *spc*): MZSP 111829.

*Paratypes*<sup>3</sup> (5 *spc*): MZSP 111830.

*Paratypes*<sup>4</sup> (4 *spc*): MZSP 111831.

*Paratypes*<sup>5</sup> (5 *spc*): MZSP 111832.

*Paratype*<sup>6</sup>: MZSP 111833.

*Paratypes*<sup>7</sup> (2 *spc*): MZSP 111834.

*Paratypes*<sup>8</sup> (8 *spc*): MZSP 111846.

*Paratypes*<sup>9</sup> (3 *spc*): MZSP 112369.

*Paratype*<sup>10</sup>: MZSP 112426.

*Localities*: Brazil, Piauí, Serra da Capivara, Coronel José Dias Municipality, close to Sítio do Mocó Town, Toca de Cima dos Pilão Cave, 8°51'47.10" S, 42°33'26.96" W; 1) same, sta. P4; 2–3) same, sta. P3; 4) same, sta. P2; 5–8) same, sta. P1; all collected in 2012; 9–10) from type locality.

*Collector*: R. Casati.

*Preservation*: Dry.

***intumescyra*, *Terebra* Lima, Tenório & Barros, 2007**

*Terebra intumescyra* Lima, Tenório & Barros, 2007: 65–66 (figs 8–12).

Gastropoda, Terebridae

*Holotype*: MZSP 84236.

*Paratype*: MZSP 84237 (Fig. 5I–J).

*Locality*: Brazil, off Rio Grande do Norte, 04°51'40" S, 35°06'01" W, D-23, 384 m depth (type locality), 24 Nov. 2001.

*Collector*: R/V *Natureza*.

*Preservation*: Dry.

***irakita*, *Euglandina* Jardim, Abbate & Simone, 2013**

*Euglandina irakita* Jardim, Abbate & Simone, 2013: 327–329 (figs 1–5).

Gastropoda, Spiraxidae

*Holotype*: MZSP 97238.

*Locality*: Brazil, Pará, Tapirapé-Aquiri National Forest, 02°56'00" S, 51°52'00" W, 15 Sep. 2010.

*Collectors*: J. Jardim and D. Abbate.

*Preservation*: Dry.

***itanhura*, *Episcynia* Simone, 2012**

*Episcynia itanhura* Simone, 2012c: 81–83 (figs 16–27).

Gastropoda, Tornidae

*Holotype*: MZSP 106553.

*Paratypes* (18 *spc*): MZSP 106556.

*Locality*: Brazil, Espírito Santo, São Mateus, off Guriri, 18°47' S, 32°39' W, 3 m depth (type locality).

*Preservation*: Dry, 3 paratypes with metallic coating due to SEM examination.

***jensi*, *Arinia* Maassen, 2001**

*Arinia jensi* Maassen, 2001: 56 (figs 5, 14–15).

Gastropoda, Diplommatinidae

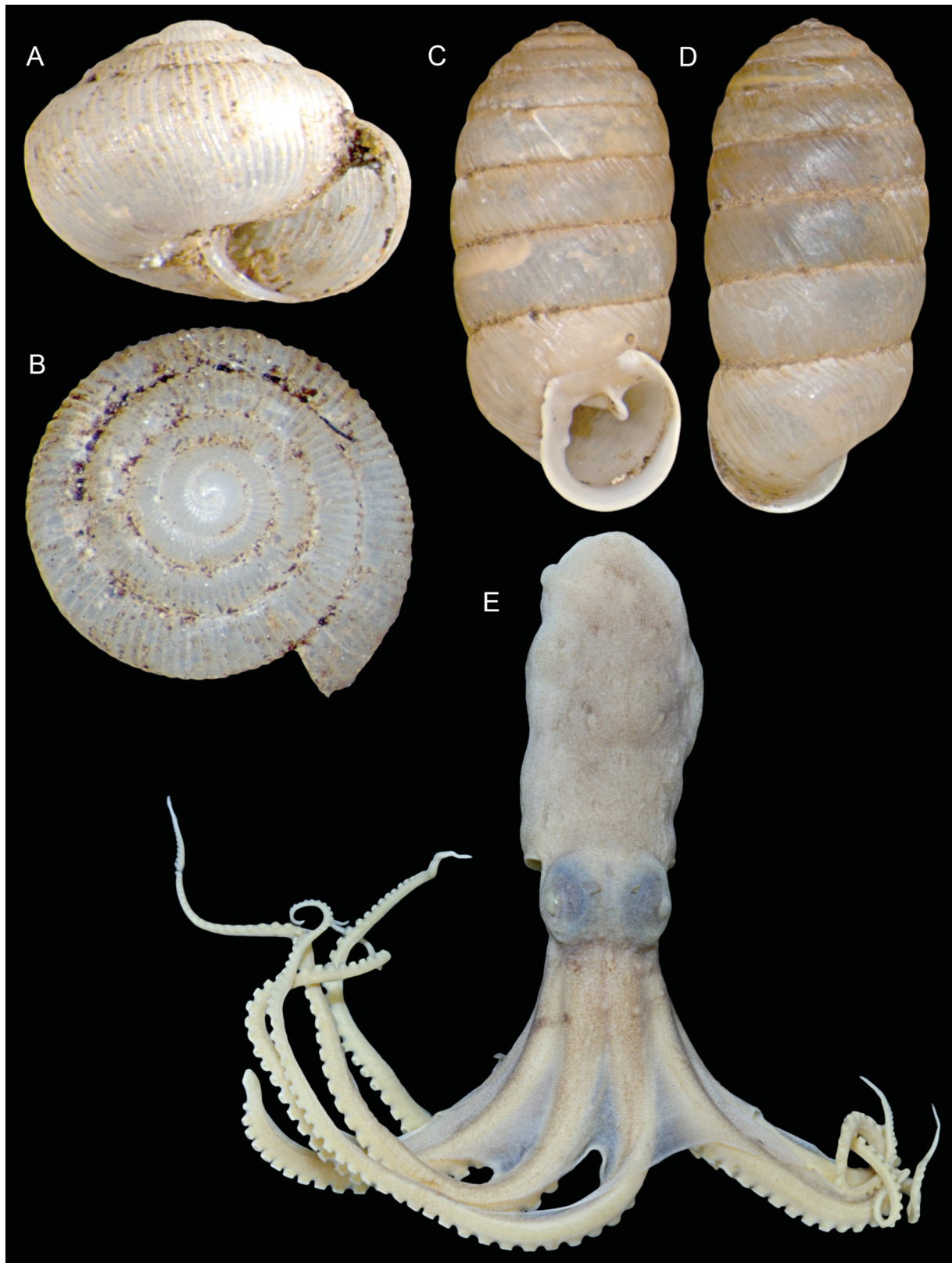
*Paratype*: MZSP 95939.

*Locality*: Peninsular Malaysia, Kelantan, along the right side of road 8 from Gua Musang to Machamg at km 24.9; 04°55'022" N, 102°06'934" E.

*Collectors*: J. and C. Hemmen.

*Preservation*: Dry.

*Remarks*: Former Jens Hemmen Collection. The specimen listed above is a remainder of a 250-specimen paratype lot deposited by the author in Hemmen's collection (Maassen 2001).



**Fig. 7.** A–B. *Teracharopa goudi* Maassen, 2000, probable paratype MZSP 95494, L = 2 mm, W = 2.7 mm. C–D. *Orculella astirakiensis* Gittenberger & Hausdorf, 2004, paratype MZSP 95489, L = 8.3 mm, W = 4 mm. E. *Eledone gaucha* Haimovici, 1988, paratype MZSP 25242, approximate mantle length = 30 mm.



***jensi*, *Boettgeria* Neubert & Groh, 1998**

*Boettgeria (Boettgeria) jensi* Neubert & Groh, 1998: 159–162 (fig. 3).

Gastropoda, Clausiliidae

*Paratype*: MZSP 95947 (Fig. 5O–P).

*Locality*: Portugal, Madeira Archipelago, Desertas Island, 29–31 Jul. 1985.

*Collectors*: J. Gerber, K. Groh and J. Hemmen.

*Preservation*: Dry.

*Remarks*: Former Jens Hemmen Collection. The specimen listed above is a remainder of a 17-specimen paratype lot deposited by Neubert & Groh in Hemmen's collection.

***joapyra*, *Subcancilla* Simone & Cunha, 2012**

*Subcancilla joapyra* Simone & Cunha, 2012: 766–768 (fig. 7A–D).

Gastropoda, Mitridae

*Paratype*: MZSP 102675.

*Locality*: Brazil, Espírito Santo, off Itaúnas, Abrolhos Slope, 18°59' S, 37°50' W, MD55 sta. DC75, 295 m depth, 27 May 1987.

*Collectors*: P. Bouchet, J.H. Leal and B. Métivier.

*Preservation*: Dry.

*Remarks*: Former MNHN, Paris.

***jukyry*, *Turricostellaria* Simone & Cunha, 2012**

*Turricostellaria jukyry* Simone & Cunha, 2012: 759–760 (fig. 5G–K).

Gastropoda, Costellariidae

*Paratypes (2 spc)*: MZSP 102858.

*Locality*: Brazil, Espírito Santo, off Regência, 19°40' S, 37°48' W, MD55 sta. CB77, 790–940 m depth, 27 May 1987.

*Collectors*: P. Bouchet, J.H. Leal and B. Métivier.

*Preservation*: Dry.

*Remarks*: Former MNHN, Paris.

***jukyriuva*, *Natica* Simone, 2014**

*Natica jukyriuva* Simone, 2014: 582 (fig. 9A–E).

Gastropoda, Naticidae

*Paratypes (2 spc)*: MZSP 105144.

*Locality*: Brazil, Espírito Santo, off Itaúnas, 18°59' S, 37°50' W, 295 m depth (type locality), 27 May 1987.

*Collectors*: P. Bouchet, J.H. Leal and B. Métivier.

*Preservation*: Dry.

*Remarks*: Former MNHN, Paris.

***lacrima*, *Pseudosimnia* Simone & Cunha, 2012**

*Pseudosimnia lacrima* Simone & Cunha, 2012: 752–754 (fig. 3M–O).

Gastropoda, Ovulidae

*Paratype*: MZSP 104319.

*Locality*: Brazil, Espírito Santo, off Regência, 19°40' S, 37°48' W, MD55 sta. CB77, 790–940 m depth, 27 May 1987.

*Collectors*: P. Bouchet, J.H. Leal and B. Métivier.

*Preservation*: Dry.

*Remarks*: Former MNHN, Paris.

***lapernoi*, *Yoldiella* Benaim & Absalão, 2011**

*Yoldiella lapernoi* Benaim & Absalão, 2011: 515–517 (fig. 2A–G, J).

Bivalvia, Yoldiidae

*Paratype* (1 valve): MZSP 93356.

*Locality*: Brazil, Rio de Janeiro, Campos Basin, sta. 41, 22°39'34.36" S, 40°08'22.27" W, 1200 m depth (type locality).

*Collector*: R/V *Astro-Garoupa*.

*Preservation*: Dry.

***latiusculus*, *Microlinices* Simone, 2014**

*Microlinices latiusculus* Simone, 2014: 567–573 (figs 1A–K, 2A–H, 3A–E, 11D–E).

Gastropoda, Naticidae

*Paratype*: MZSP 105134.

*Locality*: Brazil, Rio de Janeiro, off Arraial do Cabo, 23°41' S, 42°06' W, MD55 sta. CB 104, 43–450 m depth (type locality), 1 Jun. 1987.

*Collectors*: P. Bouchet, J.H. Leal and B. Métivier.

*Preservation*: Dry.

*Remarks*: Former MNHN, Paris.

***lepta*, *Peristichia* Pimenta, Santos & Absalão, 2008**

*Peristichia lepta* Pimenta, Santos & Absalão, 2008: 182 (fig. 5D–H).

Gastropoda, Pyramidellidae

*Holotype*: MZSP 77062.

*Paratypes*<sup>1</sup> (20 spc): MZSP 77063.

*Paratypes*<sup>2</sup> (2 spc): MZSP 77064.

*Localities*: Brazil, off Paraná; REVIZEE sta. 6656, 25°22.1' S, 46°30.35' W, 70 m depth; 1) off São Paulo, PADCT sta. 6579, 24°42.302' S, 45°18.831' W, 83 m; 2) REVIZEE sta. 6669, 24°7.42' S, 44°42.22' W, 101 m.

*Collector*: R/V *W. Besnard*.

*Preservation*: Dry.

***litosbathron*, *Triptychus* Pimenta, Santos & Absalão, 2008**

*Triptychus litosbathron* Pimenta, Santos & Absalão, 2008: 180 (fig. 4E–I).

Gastropoda, Pyramidellidae

*Holotype*: MZSP 77065.

*Paratype*<sup>1</sup>: MZSP 77066.

*Paratype*<sup>2</sup>: MZSP 86686.

*Paratypes*<sup>3</sup> (5 spc): MZSP 86688.

*Paratype*<sup>4</sup>: MZSP 86691.

*Paratype*<sup>5</sup>: MZSP 86693.

*Paratype*<sup>6</sup>: MZSP 86694.

*Paratype*<sup>7</sup>: MZSP 86695.

*Localities*: Brazil; 1) off Paraná, 25°15.76' S, 45°04.62' W, PADCT sta. 6577, 124 m depth (type locality); 2) 24°40.75' S, 44°50.82' W, REVIZEE sta. 6677, 137 m; 3) 24°00.95' S, 43°55.54' W, REVIZEE sta. 6662, 135 m; 4) off São Paulo, 24°17.13' S, 44°12.15' W, REVIZEE sta. 6666, 163 m; 5) 26°15' S, 45°53' W, PADCT sta. 6641, 130 m; 6) 26°17.134' S, 46°41.788' W, REVIZEE sta. 6695, 153 m; 7) 27°48.07' S, 47°24.04' W, PADCT sta. 6606, 175 m.

*Preservation*: Dry.

***lucianae, Flabellina engeli* Dacosta, Cunha, Simone & Schrödl, 2007**

*Flabellina engeli lucianae* Dacosta, Cunha, Simone & Schrödl, 2007: 340–343 (figs 1–10).

Gastropoda, Flabellinidae

*Holotype*: MZSP 48251.

*Locality*: Brazil, Rio de Janeiro, Paraty, Lula Beach, 23°11'38.5" S, 44°38'06.5" W, 4 m depth, 10 Dec. 2005.

*Collector*: L.R. Simone.

*Preservation*: 70% ethanol.

***macrostoma, Aclis* Barros, Lima & Francisco, 2007**

*Aclis macrostoma* Barros, Lima & Francisco, 2007: 62–63 (figs 1–6).

Gastropoda, Aclididae

*Holotype*: MZSP 77988.

*Paratype*<sup>1</sup>: MZSP 77989.

*Paratypes*<sup>2</sup> (2 *spc*): MZSP 77990.

*Localities*: Brazil, off Rio Grande do Norte, continental slope off northeastern Brazil, muddy bottom, D-26, 06°14'04" S, 34°52'33" W, 510 m depth, 26 Nov. 2001; 1) muddy bottom, D-23, 04°51'00" S, 35°06'46" W, 375 m, 24 Nov. 2001; 2) muddy bottom, D-27, 06°14'24" S, 34°52'06" W, 500 m, 26 Nov. 2001.

*Preservation*: Dry.

***maculata, Oxychona* Salvador & Cavallari, 2013**

*Oxychona maculata* Salvador & Cavallari, 2013a: 315–316 (figs 2–11).

Gastropoda, Orthalicidae

*Holotype*: MZSP 108005.

*Paratype*<sup>1</sup>: MZSP 74500.

*Localities*: Brazil, Bahia, Ilhéus Municipality, 14°47' S, 39°2' W, Dec. 1994; 1) Itapetinga Municipality, 15°15' S, 40°15' W, Jan. 2007.

*Collectors*: A. Bodart; 1) C. Lima.

*Preservation*: Dry.

***mangle, Crassostrea* Amaral & Simone, 2014**

*Crassostrea mangle* Amaral & Simone, 2014: 2–6 (figs 1–2).

Bivalvia, Ostreidae

*Holotype*: MZSP 89462.

*Paratypes*<sup>1</sup> (40 *spc*): MZSP 100495.

*Locality*: Brazil, Alagoas State, Barra de Camaragibe, Camaragibe River Estuary (type locality), 21 Oct. 2008; 1) 8 Jan. 2011.

*Collector*: M.D.S. Tavares.

*Preservation*: 70% ethanol.

***mariaodeteae*, *Poremskiconus* Petuch & Myers, 2014**

*Poremskiconus mariaodeteae* Petuch & Myers, 2014b: 33 (text fig. + fig. 2A–F).

Gastropoda, Conidae

*Holotype*: MZSP 116525.

*Paratype*: MZSP 116526.

*Locality*: Brazil, Ceará state, off Camocim, 40 m depth.

*Collector*: D. Monteiro.

*Preservation*: Dry.

*Remarks*: This species was recombined as *Conus mariaodeteae* by Puillandre *et al.* (2015).

***marinae*, *Jaspidiconus* Petuch & Myers, 2014**

*Jaspidiconus marinae* Petuch & Myers, 2014b: 35–38 (text fig. + fig. 4A–F).

Gastropoda, Conidae

*Holotype*: MZSP 116530.

*Paratype*: MZSP 116531.

*Locality*: Brazil, Bahia, Salvador, Todos os Santos Bay, northern coast of Itaparica Island, off Porto de Itaparica, 1 m depth.

*Collector*: G.S.P. Oliveira.

*Preservation*: Dry.

*Remarks*: This species was recombined as *Conasprella marinae* by Puillandre *et al.* (2015).

***metamorphosicum*, *Caecum* Lima, Santos & Absalão, 2013**

*Caecum metamorphosicum* Lima, Santos & Absalão, 2013: 769–773 (figs 3–6, table 1).

Gastropoda, Caecidae

*Paratypes* (9 *spc*): MZSP 110294.

*Paratypes*<sup>1</sup> (6 *spc*): MZSP 110299.

*Paratypes*<sup>2</sup> (8 *spc*): MZSP 110308.

*Paratypes*<sup>3</sup> (1 *spc*): MZSP 110310.

*Localities*: Brazil, Rio de Janeiro, ECCB sta. H16-G04-R2, 22°03'39.04" S, 40°06'59.81" W, 90 m depth, 6 Jul. 2009; 1) sta. H16-G04-R1, 22°03'38.66" S, 40°06'59.32" W, 89 m, 6 Jul. 2009; 2) sta. H16-D03-R3, 22°19'31.87" S, 40°37'18.97" W, 73 m, 4 Jul. 2009; 3) 23°04' S, 40°59' W, about 100 m, 17 Dec. 2004.

*Collector*: R/V Seward Johnson.

*Preservation*: Dry.

***microsculpta*, *Hubendickia* Brandt, 1968**

*Hubendickia microsculpta* Brandt, 1968: 239–240 (pl. 9, fig. 27 + text fig. 17).

Gastropoda, Pomatiopsidae

*Probable paratype*: MZSP 95945 (Fig. 4G–H).

*Locality*: East Thailand, Ubon Province, Mekong River at Bandan (type locality), 9 May 1967.

*Preservation*: Dry.

*Remarks*: Former Jens Hemmen Collection. Data on the specimen's label correspond to the lot originally catalogued as SMRL 3378. The specimen listed above is a possible remainder of a 50-specimen paratype lot left by the author under the care of the SMRL. This species was recombined as *Manningiella microsculpta* by Brandt (1974).

***minor*, *Cratena Padula*, Araújo, Matthews-Cascón & Schrödl, 2014**

*Cratena minor* Padula, Araújo, Matthews-Cascón & Schrödl, 2014: 581–582 (figs 3B, 4A, D, 5A).

Gastropoda, Facelinidae

*Paratype*: MZSP 116702.

*Locality*: Brazil, Pernambuco State, Ponta Itapessoca, 15 Mar. 2005.

*Collector*: M. Schrödl.

*Preservation*: 99% ethanol.

***mirim*, *Acteon Cunha*, 2011**

*Acteon mirim* Cunha, 2011: 230–231 (figs 2–8).

Gastropoda, Acteonidae

*Holotype*: MZSP 70344.

*Paratype*: MZSP 57091.

*Paratype*: MZSP 57092.

*Paratype*: MZSP 94212.

*Locality*: Brazil, Ceará, off Fortaleza, Canopus Bank, 02°14'25" S, 38°22'50" W, 240 m depth, dredged, Aug.–Sep. 2005.

*Collectors*: J. Coltro and P.M. Costa.

*Preservation*: Dry.

***mirim*, *Mitromorpha Simone & Cunha*, 2012**

*Mitromorpha mirim* Simone & Cunha, 2012: 771–772 (fig. 9G–K).

Gastropoda, Mitromorphidae

*Paratype*: MZSP 102674.

*Paratype*<sup>1</sup>: MZSP 102683.

*Localities*: Brazil, Espírito Santo, off Itaúnas, Abrolhos Slope, 18°56' S, 37°57' W, MD55 sta. DC82, 85–105 m depth; 1) off Itaúnas, 18°49' S, 37°57' W, MD55 sta. DC83, 60 m; all collected on 28 May 1987.

*Collectors*: P. Bouchet, J.H. Leal and B. Métivier.

*Preservation*: Dry.

*Remarks*: Former MNHN, Paris.

***mohicanus*, *Cyclostremiscus Simone*, 2012**

*Cyclostremiscus mohicanus* Simone, 2012c: 78–79 (figs 1–15).

Gastropoda, Tornidae

*Holotype*: MZSP 106551.

*Paratypes* (16 *spc*): MZSP 106552.

*Locality*: Brazil, Espírito Santo, São Mateus, off Guriri, 18°47' S, 32°39' W, 3 m depth (type locality).

*Preservation*: 70% ethanol. Paratypes are preserved dry, and a single specimen bears a metallic coating due to SEM examination.

***molaris*, *Streptartemon Simone & Casati*, 2013**

*Streptartemon molaris* Simone & Casati, 2013: 154–156 (figs 43–48).

Gastropoda, Streptaxidae

*Holotype*: MZSP 112451.

*Paratype*<sup>1</sup>: MZSP 111840.

*Paratypes*<sup>2</sup> (4 spc): MZSP 111841.

*Paratype*<sup>3</sup>: MZSP 111843.

*Paratype*<sup>4</sup>: MZSP 112366.

*Paratypes*<sup>5</sup> (2 spc): MZSP 112367.

*Paratype*<sup>6</sup>: MZSP 112371.

*Paratype*<sup>7</sup>: MZSP 112376.

*Localities*: Brazil, Piauí, Serra da Capivara, Coronel José Dias Municipality, close to Sítio do Mocó Town, Toca de Cima dos Pilão Cave, 8°51'47.10" S, 42°33'26.96" W; 1) same, sta. P2; 2) same, sta. P4; 3) same, sta. P2; all collected in 2012; 4–7) from type locality.

*Collector*: R. Casati.

*Preservation*: Dry.

#### ***munensis*, *Hydrorissoia* Brandt, 1968**

*Hydrorissoia munensis* Brandt, 1968: 243 (pl. 9, fig. 30 + text fig. 21).

Gastropoda, Pomatiopsidae

*Probable paratype*: MZSP 95929 (Fig. 3K–L).

*Locality*: East Thailand, Ubon Province, Mun River at Phibun Mangsahan (type locality), 21 Jan. 1966.

*Preservation*: Dry.

*Remarks*: Former Jens Hemmen Collection. Data on the specimen's label correspond to the lot originally catalogued as SMRL 3471. The specimen listed above is a possible remainder of a 50-specimen paratype lot left under the care of the SMRL. This species is a synonym of *Hydrorissoia gracilis* Brandt, 1968 according to Davis (1979).

#### ***munensis*, *Jullienia* Brandt, 1974**

*Jullienia munensis* Brandt, 1974: 83 (pl. 6, fig. 1).

Gastropoda, Pomatiopsidae

*Probable paratype*: MZSP 95482 (Fig. 4A–B).

*Locality*: Thailand, Mangsahan, Mun River at Phibun (type locality), 21 Jan. 1966.

*Preservation*: Dry.

*Remarks*: Former Jens Hemmen Collection. Measurements and label data compare fittingly with a 200-specimen paratype lot from the same locality, originally catalogued as SMRL 3461.

#### ***neglecta*, *Angaria* Poppe & Goto, 1993**

*Angaria neglecta* Poppe & Goto, 1993: 22 (pl. 6).

Gastropoda, Angariidae

*Paratype*: MZSP 95951.

*Locality*: Japan, Wakayama prefecture, Nada-Cho, 510 fms.

*Preservation*: Dry.

*Remarks*: Former Jens Hemmen Collection. The specimen listed above was initially designated as paratype #12 in the original description. The senior author (Poppe, pers. comm.) confirmed the type status.

#### ***nivea*, *Steeriana* Nordsieck, 2005**

*Steeriana nivea* Nordsieck, 2005b: 211 (fig. 16).

Gastropoda, Clausiliidae

*Paratype*: MZSP 95479 (Fig. 6G–H).

*Locality*: Peru, La Libertad Department, c. 25 km from Cajabamba to Huamachuco, c. 3200 m altitude (type locality), 4 Apr. 2012.

*Collector*: J. Hemmen.

*Preservation*: Dry.

*Remarks*: Former Jens Hemmen Collection. The specimen listed above is a remainder of a 21-specimen paratype lot deposited by Nordsieck in Hemmen's collection.

***notialis*, *Oscilla* Pimenta, Santos & Absalão, 2008**

*Oscilla notialis* Pimenta, Santos & Absalão, 2008: 175–176 (fig. 2A–F).

Gastropoda, Pyramidellidae

*Paratype*<sup>1</sup>: MZSP 86787.

*Paratypes*<sup>2</sup> (5 *spc*): MZSP 86788.

*Paratypes*<sup>3</sup> (2 *spc*): MZSP 86790.

*Paratypes*<sup>4</sup> (5 *spc*): MZSP 86791.

*Paratypes*<sup>5</sup> (29 *spc*): MZSP 86792.

*Paratype*<sup>6</sup>: MZSP 86793.

*Paratypes*<sup>7</sup> (14 *spc*): MZSP 86794.

*Paratypes*<sup>8</sup> (2 *spc*): MZSP 86795.

*Paratypes*<sup>9</sup> (9 *spc*): MZSP 86798.

*Paratypes*<sup>10</sup> (11 *spc*): MZSP 86799.

*Paratype*<sup>11</sup>: MZSP 86800.

*Paratype*<sup>12</sup>: MZSP 86801.

*Localities*: Brazil; 1) off São Paulo, 24°42.608' S, 44°43.419' W, PADCT sta. 6573, 155 m depth; 2) 26°15' S, 45°53' W, PADCT sta. 6541, 130 m; 3) 25°46' S, 45°28.8' W, PADCT sta. 6631, 164 m; 4) off Rio de Janeiro, 21°51.6' S, 47°42' W, PADCT sta. 6617, 327 m; 5) off São Paulo, 24°12.74' S, 44°58.98' W, PADCT sta. 6571, 79 m; 6) off Santa Catarina, 27°48.07' S, 47°24.04' W, PADCT sta. 6606, 175 m depth; 7) off São Paulo, 25°15.76' S, 45°04.62' W, PADCT sta. 6577, 124 m; 8) off Santa Catarina, 27°10.38' S, 47°27.54' W, PADCT sta. 6635, 129 m; 9) 26°23.55' S, 46°39.49' W, PADCT sta. 6595, 175 m; 10) off São Paulo, 24°00.95' S, 43°55.54' W, REVIZEE sta. 6662, 135 m; 11) 24°17.13' S, 44°12.15' W, REVIZEE sta. 666, 163 m; 12) off Santa Catarina, 26°15' S, 45°53' W, PADCT sta. 6641, 153 m.

*Collector*: R/V *W. Besnard*.

*Preservation*: Dry.

***notialis*, *Solemya* Simone, 2009**

*Solemya notialis* Simone, 2009: 423–434 (figs 39–46, 111–117).

Bivalvia, Solemyidae

*Holotype*: MZSP 88440.

*Paratype*: MZSP 20935.

*Paratypes*<sup>1</sup> (2 *spc*): MZSP 20936.

*Paratype*<sup>2</sup>: MZSP 20937.

*Paratype*<sup>3</sup>: MZSP 35257.

*Localities*: Brazil, São Paulo, off Ubatuba, sta. 12, 23°25'S, 44°43'W, 33.5 m depth (type locality), 17 Dec. 1965; 1) Rio de Janeiro, Angra dos Reis, sta 53, 31 m, 29 Jun. 1966; 2) sta. 54, 27 m, 29 Jun. 1966; 3) Cabo Frio, May 2002.

*Collectors*: R/V *Emilia*; 3) P. Gonçalves.

*Preservation*: Dry and 70% ethanol.

***nymphalis*, *Cranopsis* Simone & Cunha, 2014**

*Cranopsis nymphalis* Simone & Cunha, 2014: 443–444 (figs 31–39).

Gastropoda, Fissurellidae

*Paratypes* (14 *spc*): MZSP 102927.

*Paratypes* (19 *spc*): MZSP 107717.

*Locality*: Brazil, Espírito Santo, off Itaúnas, Abrolhos Slope, 18°59' S, 37°50' W, 295 m depth, MD55 sta. DC75 (type locality), 27 May 1987.

*Collectors*: P. Bouchet, J.H. Leal & B. Métivier.

*Preservation*: Dry.

*Remarks*: Former MNHN, Paris.

***onager*, *Bulimus* Beck, 1837**

*Bulimus* (*Bulimulus*) *onager* Beck, 1837: 64.

Gastropoda, Orthalicidae

Neotype: MZSP 29794.

*Locality*: Brazil, Bahia, Itabuna, city center coordinates 14°47'09" S, 39°16'48" W, ~54 m altitude, Aug. 1900.

*Collector*: E. Garbe.

*Preservation*: Dry.

*Remarks*: Designated by Salvador & Cavallari (2013b). For additional information, see Salvador *et al.* (2014a).

***onca*, *Isotriphora* Fernandes, Pimenta & Leal, 2013**

*Isotriphora onca* Fernandes, Pimenta & Leal, 2013: 10–11 (figs 9–10, 45–50).

Gastropoda, Triphoridae

*Paratypes* (2 *spc*): MZSP 112068.

*Locality*: Brazil, Vitória-Trindade Chain, Trindade Island, REVIZEE sta. C5-41F, 20°30' S, 29°16' W, 360 m depth (type locality).

*Collector*: REVIZEE-Central.

*Preservation*: Dry.

***ogum*, *Jaspidiconus* Petuch & Myers, 2014**

*Jaspidiconus ogum* Petuch & Myers, 2014a: 44–45 (fig. 3H–I).

Gastropoda, Conidae

*Holotype*: MZSP 116145.

*Locality*: Brazil, Bahia State, Itaparica Island, off Aratuba, 2 m depth.

*Preservation*: Dry.

*Remarks*: This species was recombined as *Conasprella ogum* by Puillandre *et al.* (2015).

***ovir*, *Turricostellaria* Simone & Cunha, 2012**

*Turricostellaria ovir* Simone & Cunha, 2012: 760–762 (fig. 6A–D).

Gastropoda, Costellariidae

*Paratypes* (2 *spc*): MZSP 102860.

*Localities*: Brazil, Espírito Santo, off Conceição da Barra, 18°59' S, 37°47' W, MD55 sta. CB70, 1540–1550 m; 26–27 May 1987.

*Collectors*: P. Bouchet, J.H. Leal and B. Métivier.



*Preservation*: Dry.

*Remarks*: Former MNHN, Paris.

***panhai*, *Arinia* Maassen, 2001**

*Arinia panhai* Maassen, 2001: 55–56 (fig. 4, 12–13).

Gastropoda, Diplommatinidae

*Paratype*: MZSP 95493 (Fig. 1C–D).

*Locality*: Thailand, Yala Province, Kransang Cave, c. 2.6 off km 45.7 rd# 410 (Yala–Betong), 4 Oct. 2000.

*Preservation*: Dry.

*Remarks*: Former Jens Hemmen Collection. The specimen's label bears a paratype status annotation. It is a remainder of a 45-specimen paratype lot originally deposited in Hemmen's collection (Maassen 2001).

***paranapuaensis*, *Yoldiella* Benaim & Absalão, 2011**

*Yoldiella paranapuaensis* Benaim & Absalão, 2011: 517–518 (fig. 3A–B, E–H).

Bivalvia, Yoldiidae

*Paratype* (1 valve): MZSP 93357.

*Locality*: Brazil, Rio de Janeiro, Campos Basin, 22°44'49" S, 40°10'06" W, sta. 66, 1323 m depth, 2003.

*Collector*: R/V *Astro-Garoupa*.

*Preservation*: Dry.

***patriceae*, *Lamniconus* Petuch & Myers, 2014**

*Lamniconus patriceae* Petuch & Myers, 2014a: 39 (fig. 1F–H).

Gastropoda, Conidae

*Holotype*: MZSP 116142.

*Locality*: Brazil, Rio de Janeiro State, Macaé, 300 m depth.

*Collectors*: Shrimp boats.

*Preservation*: Dry.

*Remarks*: This species was recombined as *Conus patriciae* by Puillandre *et al.* (2015).

***petalius*, *Ovini* Simone, 2013**

*Ovini petalius* Simone 2013a: 187–188 (figs A–J).

Gastropoda, Tornidae

*Holotype*: MZSP 107806.

*Locality*: Brazil, Espírito Santo, Guriri, 18°47' S, 32°39' W, 3 m depth.

*Preservation*: Dry, with a metallic coating (SEM).

***pingius*, *Dolichupis* Simone & Cunha, 2012**

*Dolichupis pingius* Simone & Cunha, 2012: 756–757 (fig. 4E–H).

Gastropoda, Triviidae

*Paratypes* (2 spc): MZSP 104030.

*Locality*: Brazil, Espírito Santo, off Regência, Abrolhos Slope, 19°40' S, 37°48' W, MD55 sta. CB77, 790–940 m depth, 27 May 1987.

*Collectors*: P. Bouchet, J.H. Leal and B. Métivier.

*Preservation*: Dry.

*Remarks*: Former MNHN, Paris.

***pipoca*, *Natica* Simone, 2014**

*Natica pipoca* Simone, 2014: 582–583 (fig. 9F–I).

Gastropoda, Naticidae

*Paratypes* (2 *spc*): MZSP 105144.

*Locality*: Brazil, Espírito Santo, off Itaúnas, 18°59' S, 37°50' W, 295 m depth (type locality), 27 May 1987.

*Collectors*: P. Bouchet, J.H. Leal and B. Métivier.

*Preservation*: Dry.

*Remarks*: Former MNHN, Paris.

***polita*, *Manningiella* Brandt, 1970**

*Manningiella polita* Brandt, 1970: 195–196 (pl. 13, fig. 13 + text fig. 13).

Gastropoda, Pomatiopsidae

*Probable paratype*: MZSP 95475 (Fig. 4I–J).

*Locality*: Thailand, Ubon Province, in the mouth of Mun River at Ban dan Kao, 24 Apr. 1969.

*Preservation*: Dry.

*Remarks*: Former Jens Hemmen Collection. Measurements and data on the specimen's label correspond to the lot originally catalogued as SMRL 16361. The specimen listed above is a possible remainder of a 2000-specimen paratype lot from the above-mentioned locality. According to Brandt (1970), these specimens were left under the care of the SMRL.

***pongoensis*, *Cylindronenia pangamitoensis* Nordsieck, 2005**

*Cylindronenia pangamitoensis pongoensis* Nordsieck, 2005b: 209–210 (fig. 13).

Gastropoda, Clausiliidae

*Paratype*: MZSP 95470 (Fig. 6C–D).

*Locality*: Peru, Amazonas Department, Pongo de Rentema, Bagua Chica (type locality), area with bushes near large rocky walls, Dec. 1998.

*Preservation*: Dry.

*Remarks*: Former Jens Hemmen Collection. The specimen listed above is a remainder of an 8-specimen paratype lot deposited by Nordsieck in Hemmen's collection.

***pomponeti*, *Jaspidiconus* Petuch & Myers, 2014**

*Jaspidiconus pomponeti* Petuch & Myers, 2014b: 38–39 (text fig. + fig. 4G–J).

Gastropoda, Conidae

*Holotype*: MZSP 116532.

*Paratype*: MZSP 116533.

*Locality*: Brazil, Bahia State, Salvador, Todos os Santos Bay, off Ribeira, 0.5 m depth.

*Collector*: G.S.P. Oliveira.

*Preservation*: Dry.

*Remarks*: This species was recombined as *Conasprella pomponeti* by Puillandre *et al.* (2015).

***poremskii*, *Jaspidiconus* Petuch & Myers, 2014**

*Jaspidiconus poremskii* Petuch & Myers, 2014a: 45 (fig. 3D–E).

Gastropoda, Conidae

*Holotype*: MZSP 116145.

*Locality*: Brazil, Bahia State, Corumbau, near the reef, 1 m depth.

*Collector*: A. Poremskii.

*Preservation*: Dry.

*Remarks*: This species was recombined as *Conasprella poremskii* by Puillandre *et al.* (2015).

***praia, Ostrea parasitica Ihering, 1907***

*Ostrea parasitica praia* Ihering, 1907: 426.

Bivalvia, Ostreidae

Syntype (2 *spc*): MZSP 10916.

*Locality*: Brazil, Rio Grande do Sul State, 1883.

*Collector*: H. Ihering.

*Preservation*: Dry.

*Remarks*: Detailed information on the taxonomy, as well as figures of this species, can be found in Amaral & Simone (2014).

***priscus, Habeas Simone, 2013***

*Habeas priscus* Simone, 2013b: 522 (figs 11–17).

Gastropoda, Diplommatinidae

*Holotype*: MZSP 103044.

*Locality*: Brazil, Bahia, Central, Boqueirão do Maxixe, sta. LES0317, 13°46'51.6" S, 44°02'18.7" W, 26 Jan. 2007.

*Collectors*: M.E. Bichuette and F.D. Passos.

*Preservation*: Dry.

***prolatus, Anctus Simone & Casati, 2013***

*Anctus prolatus* Simone & Casati, 2013: 151–153 (figs 35–41).

Gastropoda, Odontostomidae

*Holotype*: MZSP 112450.

*Paratypes*<sup>1</sup> (3 *spc*): MZSP 111836.

*Paratype*<sup>2</sup>: MZSP 112350.

*Paratype*<sup>3</sup> (2 *spc*): MZSP 112362.

*Paratype*<sup>4</sup> (3 *spc*): MZSP 112372.

*Localities*: Brazil, Piauí, Serra da Capivara, Coronel José Dias Municipality, close to Sítio do Mocó Town, Toca de Cima dos Pilão Cave, 8°51'47.10" S, 42°33'26.96" W; 1) sta. P6; all collected in 2012.

*Collector*: R. Casati.

*Preservation*: Dry.

***punctata, Spiripockia Simone, 2012***

*Spiripockia punctata* Simone, 2012a: 516–523 (figs 1–33).

Gastropoda, Pomatiopsidae

*Holotype*: MZSP 105000.

*Paratypes* (19 *spc*): MZSP 104435.

*Locality*: Brazil, Bahia, Serra Ramalho Karst Area, Middle São Francisco River Basin, Lapa dos Peixes Cave, 13°49'21.78" S, 43°57'24.39" W (type locality) 29 Jul. 2005.

*Collector*: M.E. Bichuette.

*Preservation*: Dry, 70% ethanol.

***pussa*, Zeidora Simone & Cunha, 2014**

*Zeidora pussa* Simone & Cunha, 2014: 460–461 (figs 125–132).

Gastropoda, Fissurellidae

*Paratypes* (2 spc): MZSP 105510.

*Paratype*<sup>1</sup>: MZSP 105511.

*Paratype*<sup>2</sup>: MZSP 107728.

*Localities*: Brazil, Espírito Santo, off Itaúnas, 18°59' S, 37°50' W, MD55 sta. DC75, 295 m depth, May 1987; 1) off Regência, 19°40' S, 37°48' W, MD55 sta. CB77, 790–940 m, May 1987; 2) off Conceição da Barra, Abrolhos Slope, 18°59' S, 37°50' W, MD55 sta. CB76, 637 m (type locality).

*Collectors*: P. Bouchet, J.H. Leal and B. Métivier.

*Preservation*: Dry.

*Remarks*: Former MNHN, Paris.

***quinni*, Solariella Barros & Pereira in Barros, Santos & Francisco 2008**

*Solariella quinni* Barros & Pereira in Barros, Santos, & Francisco, 2008: 13–14 (figs 15–21).

Gastropoda, Solariellidae

*Holotype*: MZSP 77083.

*Paratype*<sup>1</sup>: MZSP 77082.

*Paratype*<sup>2</sup>: MZSP 77084.

*Paratype*<sup>3</sup>: MZSP 77085.

*Localities*: Brazil, Pernambuco, 08°09' S, 34°34' W, gravel bottom, 69–71 m depth, 19 Dec. 2004; 1) 08°11' S, 34°34' W, 66–71 m, 18 Dec. 2004; 2) 08°11' S, 34°36' W, 69–71 m, 19 Dec. 2004; 3) 08°11' S, 34°36' W, 69–71 m, 19 Dec. 2004.

*Preservation*: Dry.

***regimaensis*, Trochoidea Brandt, 1959**

*Trochoidea (Xeroregima) regimaensis* Brandt, 1959: 99–101 (pl. 6, fig. 13 + text fig. 8).

Gastropoda, Hygromiidae

*Probable paratype*: MZSP 95910 (Fig. 6L–N).

*Locality*: Libya, Cyrenaika, Slonta (on track to Chadra), 10 Nov. 1957.

*Collector*: R. Brandt.

*Preservation*: Dry.

*Remarks*: Former Jens Hemmen Collection. Data on the specimen's label and measurements compare well with an 1140-specimen paratype lot originally catalogued as C837.

***rolfbrandti*, Hubendickia Temcharoen, 1971**

*Hubendickia rolfbrandti* Temcharoen, 1971: 96–98 (pl. 6, fig. 6 + text fig. 6).

Gastropoda, Pomatiopsidae

*Probable paratype*: MZSP 95948 (Fig. 3E–F).

*Locality*: Laos, Mekong River, Muang Khong, near Wat (type locality), 20 Mar. 1969.

*Preservation*: Dry.

*Remarks*: Former Jens Hemmen Collection. As per measurements and data on the specimens' label, this is a possible remainder of a 1000-specimen paratype lot originally catalogued as SMRL 16076. According to Temcharoen (1971), these specimens were left under the care of the SMRL.

***rolfbrandti*, *Jullienia* Temcharoen, 1971**

*Jullienia rolfbrandti* Temcharoen, 1971: 99–100 (pl. 6, fig. 9 + text fig. 9).

Gastropoda, Pomatiopsidae

*Probable paratype*: MZSP 95463 (Fig. 4C–D).

*Locality*: Laos, Mekong River at Muang Khong, near Wat (type locality), 22 Feb. 1969.

*Preservation*: Dry.

*Remarks*: Former Jens Hemmen Collection. As per measurements and data on the specimens' label, this is a possible remainder of a 100-specimen paratype lot originally catalogued as SMRL 16326. According to Temcharoen (1971), these specimens were left under the care of the SMRL.

***rolfbrandti*, *Manningiella* Temcharoen, 1971**

*Manningiella rolfbrandti* Temcharoen, 1971: 98–99 (pl. 6, fig. 8 + text fig. 7).

Gastropoda, Pomatiopsidae

*Probable paratype*: MZSP 95924 (Fig. 4K–L).

*Locality*: Laos, Mekong River, Muang Khong, near Wat (type locality), 22 Feb. 1969.

*Preservation*: Dry.

*Remarks*: Former Jens Hemmen Collection. As per measurements and data on the specimens' label, this is a possible remainder of a 100-specimen paratype lot originally catalogued as SMRL 16287. According to Temcharoen (1971), these specimens were left under the care of the SMRL.

***rudigerbieleri*, *Solatisonax* Tenório, Barros, Francisco & Silva, 2011**

*Solatisonax rudigerbieleri* Tenório, Barros, Francisco & Silva, 2011: 175–178 (figs 1A–C, E–F).

Gastropoda, Architectonicidae

*Paratype*: MZSP 85951.

*Paratype*<sup>1</sup>: MZSP 85952.

*Localities*: Brazil, off Pernambuco, 06°25.6' S, 34°43.9' W, D-01, muddy bottom, 425 m, 29 Aug. 1999; 1) 08°46.5' S, 34°44.5' W, D-11, muddy bottom, 690 m (type locality), 18 Nov. 2000.

*Preservation*: Dry.

*Remarks*: Paratypes MZSP 85951 and MZSP 85952 correspond respectively to “paratype 2, MZUSP 15642” and “paratype 6, MZUSP 15643” reported in the original description by Tenório *et al.* (2011: 177). The catalogue numbers erroneously given by the authors (MZSP 15642 and MZSP 15643) are actually non-type lots belonging to different species/mollusc groups registered in the 1980's, and must be disregarded.

***sama*, *Mitromorpha* Simone & Cunha, 2012**

*Mitromorpha sama* Simone & Cunha, 2012: 770–771 (fig. 9A–F).

Gastropoda, Mitromorphidae

*Paratypes* (2 *spc*): MZSP 102673.

*Locality*: Brazil, Espírito Santo, off Itaúnas, Abrolhos Slope, 19°00' S, 37°48' W, MD55 sta. DC73, 602–620 m depth, 27 May 1987.

*Collectors*: P. Bouchet, J.H. Leal and B. Métivier.

*Preservation*: Dry.

*Remarks*: The specimens listed above were referred to as MZSP 102973 in the original description. This was merely a typographical error. Former MNHN, Paris.

***sanpaulensis*, *Loligo* Brakoniecki, 1984**

*Loligo sanpaulensis* Brakoniecki, 1984: 441–446 (figs 3–4).

Cephalopoda, Loliginidae

*Paratype*: MZSP 18498.

*Paratype*: MZSP 18499.

*Localities*: Brazil, Rio Grande do Sul, off Chuí, 34°20' S, 174 m depth, Nov. 1974.

*Preservation*: 70% ethanol.

*Remarks*: The specimens listed above were confirmed as types after the previous compilation (Dornellas & Simone 2011). Brakoniecki (1984) attributed two catalogue numbers (MZSP 18498, MZSP 18499) for a single specimen in the original description. In a subsequent paper on the MZSP cephalopod collection, Perez & Haimovici (1991) reported another lot as a paratype (MZSP 18601). However, Brakoniecki (1984) originally listed this lot as “other material”, therefore not formally designating it as a paratype. This species was recombined as *Doryteuthis sanpaulensis* by Vecchione *et al.* (1998).

***santosi*, *Mitromorpha* Lima, Barros & Francisco, 2010**

*Mitromorpha santosi* Lima, Barros & Francisco, 2010: 600 (fig. 1A–H).

Gastropoda, Mitromorphidae

*Holotype*: MZSP 78935.

*Paratype*<sup>1</sup>: MZSP 78936.

*Localities*: Brazil, off Rio Grande do Norte, sta. 23, 04°51'40" S, 35°06'01" W, 384 m depth, 24 Nov. 2001; 1) sta. 22, 04°50'60" S, 35°06'46" W, 375 m, 24 Nov. 2001.

*Collector*: R/V *Natureza*.

*Preservation*: Dry.

***schuetti*, *Paraprososthenia* Brandt, 1968**

*Paraprososthenia schuetti* Brandt, 1968: 232 (pl. 8, fig. 17).

Gastropoda, Pomatiopsidae

*Probable paratype*: MZSP 95487 (Fig. 3G–H).

*Locality*: Thailand, Ubon Province, Mekong River at Bandan (type locality), 21 Mar. 1967.

*Preservation*: Dry.

*Remarks*: Former Jens Hemmen Collection. Measurements and data on the specimen's label correspond to the lot originally catalogued as SMRL 3382. The specimen listed above is a possible remainder of a 10-specimen paratype lot left under the care of the SMRL. This species was recombined as *Hubendickia schuetti* in Brandt (1974).

***scymnocelata*, *Boonea* Pimenta, Absalão & Miyaji, 2009**

*Boonea scymnocelata* Pimenta, Absalão & Miyaji, 2009: 48–49 (figs 15–20).

Gastropoda, Pyramidellidae

*Holotype*: MZSP 89107.

*Paratypes* (2 spc): MZSP 89108.

*Paratypes*<sup>1</sup> (6 spc): MZSP 89109.

*Paratype*<sup>2</sup>: MZSP 89110.

*Paratype*<sup>3</sup>: MZSP 89111.

*Paratype*<sup>4</sup>: MZSP 89112.

*Paratype*<sup>5</sup>: MZSP 89113.

*Paratypes*<sup>6</sup> (4 spc): MZSP 89114.

*Paratype*<sup>7</sup>: MZSP 89115.

*Paratype*<sup>8</sup>: MZSP 89116.

*Localities*: Brazil, off Paraná, 26°33.55' S, 46°39.49' W, PADCT sta. 6595, 175 m depth (type locality); 1) off São Paulo, 24°12.74' S, 44°58.98' W, PADCT sta. 6571, 79 m; 2) off Rio de Janeiro, 23°35.82' S, 41°42.42' W, PADCT sta. 6541, 143 m; 3) off São Paulo, 25°46' S, 45°28.8' W, PADCT sta. 6631, 164 m; 4) off Paraná, 27°48.07' S, 47°24.04' W, PADCT sta. 6606, 175 m; 5) off São Paulo, 24°49.3' S, 46°34' W, PADCT sta. 6642, 128 m; 6) 25°46' S, 45°28.8' W, PADCT sta. 6631, 164 m; 7) 24°17.13' S, 44°12.15' W, REVIZEE sta. 6664, 500 m; 8) 24°17.13' S, 44°12.15' W, REVIZEE sta. 6666, 163m.

*Collector*: R/V *W. Besnard*.

*Preservation*: Dry.

***secretum*, *Opisthostoma* Maassen, 2002**

*Opisthostoma secretum* Maassen, 2002: 179 (figs 45–46).

Gastropoda, Diplommatinidae

*Probable paratype*: MZSP 95917 (Fig. 2C–D).

*Locality*: Indonesia, West Sumatra, east of Payakumbuh, Kampung Desa Gadut, 00°15'35.1" S, 100°44'01.1" E, Jul. 1997.

*Collector*: W.J.M. Maassen.

*Preservation*: Dry.

*Remarks*: Former Jens Hemmen Collection. Data on the specimen's label correspond to a 20-specimen lot originally deposited in Maassen's reference collection.

***selmaniana*, *Cernuella* Brandt, 1959**

*Cernuella (Cernuella) selmaniana* Brandt, 1959: 88–89 (pl. 6, fig. 4 + text fig. 2).

Gastropoda, Hygromiidae

*Probable paratype*: MZSP 95484 (Fig. 6I–K).

*Locality*: Libya, Cyrenaica, Ain es Selmani near Benghazi (type locality), 12 Jan. 1958.

*Collector*: R. Brandt.

*Preservation*: Dry.

*Remarks*: Former Jens Hemmen Collection. Data on the label and measurements compare fittingly with a 520-specimen paratype lot originally deposited in Brandt's reference collection.

***seraphina*, *Oenopota* Figueira & Absalão, 2010**

*Oenopota seraphina* Figueira & Absalão, 2010b: 473–475 (fig. 1A–C).

Gastropoda, Mangeliidae

*Paratypes (5 spc)*: MZSP 90704.

*Paratypes (4 spc)*: MZSP 90705.

*Locality*: Brazil, Rio de Janeiro, Campos Basin, 21°52'59" S, 39°55'30" W, sta. OPI#59, 750 m depth, 12 Dec. 2002.

*Collector*: R/V *Astro Garoupa*.

*Preservation*: Dry.

***siamensis*, *Hubendickia* Brandt, 1968**

*Hubendickia siamensis* Brandt, 1968: 236–237 (pl. 8, fig. 22 + text fig. 15).

Gastropoda, Pomatiopsidae

*Paratype*: MZSP 95466.

*Locality*: Thailand, Mun River at Phibun Mangsahan (type locality), 8 May 1966.

*Preservation*: Dry.

*Remarks:* Former Jens Hemmen Collection. The specimen listed above is a possible remainder of several thousand specimens left under the care of the SMRL. This species is a junior synonym of *Hubendickia sulcata* (Bavay, 1895), according to Davis (1979).

***simonei*, *Jaspidiconus* Petuch & Myers, 2014**

*Jaspidiconus simonei* Petuch & Myers, 2014a: 47 (fig. 3F–G).

Gastropoda, Conidae

*Holotype:* MZSP 116146.

*Locality:* Brazil, Rio de Janeiro State, Arraial do Cabo.

*Preservation:* Dry.

*Remarks:* This species was recombined as *Conasprella simonei* by Puillandre *et al.* (2015).

***simonei*, *Terebra* Lima, Tenório & Barros, 2007**

*Terebra simonei* Lima, Tenório & Barros, 2007: 64–65 (figs 1–7).

Gastropoda, Terebridae

*Holotype:* MZSP 84234.

*Paratype:* MZSP 84235 (Fig. 5K–L).

*Locality:* Brazil, off Pernambuco, continental slope, 06°25'36" S, 34°43'54" W, D-1, 425 m depth (type locality), 29 Aug. 1999.

*Collector:* R/V *Natureza*.

*Preservation:* Dry.

***strictecostata*, *Neniella* Nordsieck, 2005**

*Neniella strictecostata* Nordsieck, 2005b: 207 (fig. 7).

Gastropoda, Clausiliidae

*Paratype:* MZSP 95947 (Fig. 6E–F).

*Locality:* Peru, Amazonas Department, c. 20 km from the bridge over Marañon River near Balsas to Leymebamba, 06°50.786' S, 77°57.728' W (type locality), on rocks, 2 Nov. 2004.

*Collector:* J. Hemmen.

*Preservation:* Dry.

*Remarks:* Former Jens Hemmen Collection. The specimen listed above is a remainder of an 8-specimen paratype lot deposited by Nordsieck in Hemmen's collection.

***supralamellata*, *Diplommatina* Maassen, 2007**

*Diplommatina supralamellata* Maassen, 2007: 191–194 (figs 1–3).

Gastropoda, Diplommatinidae

*Probable paratype:* MZSP 95498 (Fig. 1I–J).

*Locality:* Indonesia, S Sulawesi, Tanah Toraja, 1.5 km W of Rantepao, 02°57.18' S, 119°53.63' E, 750 m altitude, Jul. 2002.

*Preservation:* Dry.

*Remarks:* Former Jens Hemmen Collection. Data on the specimen's label correspond to a 25-specimen lot deposited in Maassen's reference collection, originally catalogued as MD 110.

***suspira*, *Emarginula* Simone & Cunha, 2014**

*Emarginula suspira* Simone & Cunha, 2014: 453–455 (figs 90–102).

Gastropoda, Fissurellidae



*Paratype*: MZSP 102921.

*Paratypes*<sup>1</sup> (5 *spc*): MZSP 102932.

*Paratypes*<sup>2</sup> (2 *spc*): MZSP 102939.

*Localities*: Brazil, Espírito Santo, off Regência, 19°40' S, 37°48' W, 790–940 m depth, MD55 sta. CB77; 1–2) off Itaúnas, Abrolhos Slope, 18°59' S, 37°50' W, MD55 sta. DC75, 295 m (type locality), 27 May 1987.

*Collectors*: P. Bouchet, J.H. Leal and B. Métivier.

*Preservation*: Dry.

*Remarks*: Former MNHN, Paris.

#### ***taludae*, *Paranadara* Francisco, Barros & Lima, 2012**

*Paranadara taludae* Francisco, Barros & Lima, 2012: 1141–1142 (figs 1–6).

Bivalvia, Arcidae

*Paratypes* (2 *spc*): MZSP 84246.

*Locality*: Brazil, off Pernambuco, ‘Natureza’ sta. D-11, 08°46' S, 34°44' W, muddy bottom, 690 m depth, 18 Nov. 2000.

*Collector*: R/V *Almirante Saldanha*.

*Preservation*: Dry.

#### ***tamandua*, *Cuspidaria* Absalão & Oliveira, 2011**

*Cuspidaria tamandua* Absalão & Oliveira, 2011: 133–136 (figs 57–63).

Bivalvia, Cuspidariidae

*Paratypes* (2 *valves*): MZSP 96912.

*Locality*: Brazil, off Rio de Janeiro, Campos Basin, 22°37'02" S, 39°56'20" W, 1950 m depth, 13 Jun. 2003.

*Collector*: R/V *Astro Garoupa*.

*Preservation*: Dry.

#### ***tanata*, *Taranis* Figueira & Absalão, 2010**

*Taranis tanata* Figueira & Absalão, 2010a: 736–737 (fig. 1G–I).

Gastropoda, Raphitomidae

*Paratype*: MZSP 90709.

*Locality*: Brazil, Rio de Janeiro, Campos Basin, 22°04'45" S, 39°41'58" W, sta. OPII#53, 1910 m depth, 27 Jun. 2003.

*Collector*: R/V *Astro Garoupa*.

*Preservation*: Dry.

#### ***tessa*, *Anostoma* Simone, 2012**

*Anostoma tessa* Simone, 2012b: 435–436 (figs 15–20).

Gastropoda, Orthalicidae

*Holotype*: MZSP 103914.

*Paratype*: MZSP 103915.

*Paratypes* (37 *spc*): MZSP 103916.

*Locality*: Brazil, Bahia, Santa Maria da Vitória, ~13°24' S, 44°12' W, ~460 m altitude (type locality), Jan. 2012.

*Collector*: J. Coltro.

*Preservation*: Dry.

***tigrina*, *Isotriphora* Fernandes, Pimenta & Leal, 2013**

*Isotriphora tigrina* Fernandes, Pimenta & Leal, 2013: 8–9 (figs 7–8, 39–44).

Gastropoda, Triphoridae

*Paratypes* (3 *spc*): MZSP 105154.

*Locality*: Brazil, Trindade Island, Vitória-Trindade Chain, 20°30' S, 29°19' W, MD55 sta. DC59, 52–60 m depth (type locality).

*Collectors*: P. Bouchet, J.H. Leal and B. Métivier.

*Preservation*: Dry.

***tonisii*, *Poremskiconus* Petuch & Myers, 2014**

*Poremskiconus tonisii* Petuch & Myers, 2014b: 33–35 (text fig. + fig. 2G–H).

Gastropoda, Conidae

*Holotype*: MZSP 116527.

*Locality*: Brazil, Bahia, off Prado, Abrolhos Platform, 25 m depth.

*Preservation*: Dry.

*Remarks*: Recombined as *Conus tonisii* by Puillandre *et al.* (2015).

***torquata*, *Eulimella* Pimenta, Santos & Absalão, 2011**

*Eulimella torquata* Pimenta, Santos & Absalão, 2011: 28–30 (figs 19–25).

Gastropoda, Pyramidellidae

*Paratypes* (2 *spc*): MZSP 101567.

*Locality*: Brazil, off Espírito Santo, 19°41' S, 37°48' W, MD 55 sta. CB77, 27 May 1987.

*Collectors*: P. Bouchet, J.H. Leal and B. Métivier.

*Preservation*: Dry.

*Remarks*: Former MNHN, Paris.

***trinidadense*, *Caecum* Lima, Santos & Absalão, 2013**

*Caecum trinidadense* Lima, Santos & Absalão, 2013: 773–776 (figs 7–10).

Gastropoda, Caecidae

*Paratype*: MZSP 110290.

*Paratypes*<sup>1</sup> (7 *spc*): MZSP 110292.

*Paratypes*<sup>2</sup> (5 *spc*): MZSP 110306.

*Localities*: Brazil, Rio de Janeiro, sta. D1, 22°48' S, 41°09' W, 69 m depth, 23 Feb. 1996; 1) ECCB sta. H16-F03-R2, 22°07'43.33" S, 40°18'48.95" W, 71 m, 6 Jul. 2009; 2) ECCB sta. H16-F03-R1, 22°07'43.44" S, 40°18'47.00" W, 72 m, 05 Jul. 2009.

*Collectors*: R/V *Antares*; 1–2) R/V *Seward Johnson*.

*Preservation*: Dry.

***trispiralis*, *Hydrorissoia* Brandt, 1968**

*Hydrorissoia trispiralis* Brandt, 1968: 243–244 (pl. 9, fig. 31 + text fig. 22).

Gastropoda, Pomatiopsidae

*Topotype*: MZSP 95936.

*Locality*: East Thailand, Ubon Province, Mekong River at Bandan (type locality), 22 Mar. 1967.

*Preservation*: Dry.

*Remarks*: Former Jens Hemmen Collection. Data on the specimen's label correspond to the lot originally catalogued as SMRL 3471. The specimen listed above is a possible remainder of a 30-specimen paratype lot left under the care of the SMRL.

***triteia*, *Seguenzia* Salvador, Cavallari & Simone, 2014**

*Seguenzia triteia* Salvador, Cavallari & Simone, 2014b: 548 (figs 25–28).

Gastropoda, Seguenziidae

*Paratypes* (3 *spc*): MZSP 116280.

*Locality*: Brazil, Espírito Santo, off São Mateus, Abrolhos Slope, 18°59' S, 37°47' W, MD55 sta. DC70, 1540–1550 m depth, 26 May 1987.

*Collectors*: P. Bouchet, J.H. Leal and B. Métivier.

*Preservation*: Dry.

*Remarks*: Former MNHN, Paris.

***tupinamba*, *Calliostoma* Dornellas, 2012**

*Calliostoma tupinamba* Dornellas, 2012: 91–101 (figs 1–9, 16–28).

Gastropoda, Calliostomatidae

*Holotype*: MZSP 105740.

*Paratypes*<sup>1</sup> (4 *spc*): MZSP 91745.

*Paratypes*<sup>2</sup> (7 *spc*): MZSP 102223.

*Paratypes*<sup>3</sup> (2 *spc*): MZSP 103766.

*Paratype*<sup>4</sup>: MZSP 105118.

*Paratypes*<sup>5</sup> (4 *spc*): MZSP 105660.

*Localities*: Brazil, off Rio de Janeiro, Angra dos Reis, Jorge Grego Island, 23°13' S, 44°08' W, 5–7 m depth, 8–9 Aug. 2009; 1) from type locality; 2) off São Paulo, Alcatrazes Archipelago, Farol Island, 24°05'44.7" S, 45°42'08.0" W, 6–9 m, 5 Oct. 2011; 3) São Sebastião, Therezinha wreck, 23°54'26" S, 45°27'57" W, 10 m, 20 Jan. 2012; 4) Ilhabela, Saco do Eustáquio, 23°50'11" S, 45°14'21" W, 12 m, 9 Jan 2012; 5) Vitória Island, Saco do Paiá, 23°44.658' S, 45°01.343' W, 6–9 m, 15 May 2012.

*Collector*: A.P.S. Dornellas.

*Preservation*: 70% ethanol.

***umberlee*, *Halystina* Salvador, Cavallari & Simone, 2014**

*Halystina umberlee* Salvador, Cavallari & Simone, 2014b: 542–544 (figs 13–18).

Gastropoda, Seguenziidae

*Paratypes* (12 *spc*): MZSP 116292.

*Locality*: Brazil, Espírito Santo, off São Mateus, Abrolhos Slope, 18°59' S, 37°47' W, 1540–1550 m depth, 26 May 1987.

*Collectors*: P. Bouchet, J.H. Leal and B. Métivier.

*Preservation*: Dry.

*Remarks*: Former MNHN, Paris.

***unicolor*, *Andiniella flammulata* Nordsieck, 2005**

*Andiniella flammulata unicolor* Nordsieck, 2005b: 212 (fig. 19).

Gastropoda, Clausiliidae

*Paratype*: MZSP 95490 (Fig. 5M–N).

*Locality*: Peru, Junin Department, end of Palca town to Tarma, left side of the road, 11°20.762' S, 75°34.482' W (type locality), on rocks and under grass, 5 Apr. 2012.

*Preservation*: Dry.

*Remarks*: Former Jens Hemmen Collection. The specimen listed above is a remainder of a 20-specimen paratype lot deposited by Nordsieck in Hemmen's collection.

***vlceki*, *Plekocheilus* Breure & Schlögl, 2010**

*Plekocheilus* (*Plekocheilus*) *vlceki* Breure & Schlögl, 2010: 52–54 (figs 2A–C, 3A, 3B, 4A).

Gastropoda, Orthalicidae

*Paratype*: MZSP 92470.

*Locality*: Venezuela, Bolivar State, Chimantá Massif, Churí-tepui, Sima Northwest, 2100 m altitude (type locality), Feb. 2009.

*Collector*: J. Schlögl.

*Preservation*: Dry.

***watsoni*, *Aclis* Barros, Lima & Francisco, 2007**

*Aclis watsoni* Barros, Lima & Francisco, 2007: 65–67 (figs 7–9).

Gastropoda, Aclididae

*Holotype*: MZSP 77991.

*Paratypes*<sup>1</sup> (3 spc): MZSP 77992.

*Paratypes*<sup>2</sup> (4 spc): MZSP 77993.

*Localities*: Brazil, off Sergipe, continental slope, 10°41.4'00" S, 36°18.7'00" W, 365 m depth; 1) muddy bottom, 10°41.4'00" S, 36°18.7'00" W, 365 m, 28 Oct. 2000; 2) muddy bottom, 11°35.5'00"S, 37°12.3'00"W, 510 m, 30 Oct. 2000.

*Preservation*: Dry.

***wilhelminae*, *Diplommatina* Maassen, 2002**

*Diplommatina wilhelminae* Maassen, 2002: 175 (figs 29–30).

Gastropoda, Diplommatinidae

*Probable paratype*: MZSP 95462 (Fig. 1K–L).

*Locality*: Indonesia, West Sumatra, SE of Bukit Tingii, 3 km E of Lintau, Cave Gua Pangian, 00°28'19.5" S, 100°45'11.7 "E (type locality).

*Preservation*: Dry.

*Remarks*: Former Jens Hemmen Collection. Data on the specimen's label correspond to several paratype lots deposited in different collections, some of them private (Kittel Wiesthal, 2 specimens and Maassen's reference collection, 10 specimens).

***willianseverii*, *Heliacus* Tenório, Barros, Francisco & Silva, 2011**

*Heliacus willianseverii* Tenório, Barros, Francisco & Silva, 2011: 186–189 (figs 5A–C, E–G).

Gastropoda, Architectonicidae

*Paratype*: MZSP 85949.

*Paratype*<sup>1</sup>: MZSP 85950.

*Localities*: Brazil, off Pernambuco, 09°07' S, 34°53' W, D-Sinuelo, bottom with calcareous melobesia algae, 104 m (type locality), 17 Sep. 1999; 1) off Sergipe, 11°58.7' S, 36°49.2' W, D-Sinuelo, muddy bottom, 100 m, 1 Nov. 2000.

*Preservation*: Dry.

*Remarks*: Paratype MZSP 85949 corresponds to paratypes 8, 9, 10, 11 and 12 from the original description by Tenório *et al.* (2011: 186). Similarly, MZSP 85950 corresponds to paratypes 13, 14, 15, 16 and 17. The authors gave incorrect MZSP catalogue numbers in the original description (from MZSP 15043 to MZSP 15052). These are actually non-type lots belonging to different species/mollusc groups registered in the 1980's, and must be disregarded. The valid numbers are the ones listed above.

## **Corrigendum to the previous list**

### ***inaequistriata*, *Helicina* Pilsbry, 1900**

*Helicina inaequistriata* Pilsbry, 1900: 394.

Gastropoda, Helicinidae

*Paralectotypes* (17 spc): MZSP 938.

*Locality*: See Dornellas & Simone (2011).

*Collector*: See Dornellas & Simone (2011).

*Preservation*: Dry.

*Remarks*: The present specimens, also listed in Dornellas & Simone (2011: 19), are actually paralectotypes. The lectotype and remaining paralectotypes are held in the Academy of Natural Sciences, Philadelphia (ANSP) collection, respectively catalogued as ANSP 78038 and ANSP 358655 (5 shells).

## **Acknowledgements**

We are thankful to Vanessa S. Amaral (MZSP), Carlo M. Cunha (ANSP), Rodrigo B. Salvador (SMNS, Stuttgart) and Guido T. Poppe for valuable information and many helpful suggestions. We especially thank Daniel Abbate (MZSP) for providing several of the type photos and José and Marcus Coltro (Femorale) for providing several of the type specimens listed in this paper.

## **References**

- Absalão R.S. & Oliveira C.D.C. 2011. The genus *Cuspidaria* (Pelecypoda: Septibranchia: Cuspidariidae) from the deep sea of Campos Basin, Brazil, with descriptions of two new species. *Malacologia* 54 (1–2): 119–138. <http://dx.doi.org/10.4002/040.054.0104>
- Alf A. & Kreipl K. 2006. A new *Astraea* from Bali, Indonesia. *Spixiana* 29 (1): 91–93.
- Alf A. & Kreipl K. 2011. The family Turbinidae. Subfamilies Turbininae Rafinesque, 1815 and Prisogasterinae Hickman & McLean, 1990. In: Poppe G.T. & Groh K. (eds) *A Conchological Iconography*. Conchbooks, Hackenheim.
- Amaral V.S. & Simone L.R.L. 2014. Revision of genus *Crassostrea* (Bivalvia: Ostreidae) of Brazil. *Journal of the Marine Biological Association of the United Kingdom* 94 (4): 811–836. <http://dx.doi.org/10.1017/S0025315414000058>
- Barros J.C.N., Lima S.F. & Francisco J.A. 2007. Two new species of *Aclis* (Mollusca: Gastropoda: Aclididae) from the continental slope of northeast Brazil. *Zootaxa* 1614: 61–68.
- Barros J.C.N., Santos P.C.P. & Francisco J.A. 2008. Comments of species of *Solariella* and *Lamellitrochus* (Trochidae, Solariellinae) from the continental slope of Northeast Brazil, with the description of a new species. *Revista Brasileira de Engenharia de Pesca* 3 (1): 6–29.
- Beck H.H. 1837. *Index molluscorum praesentis aevi Musei Princeps augustissimi Christiani Frederici. Fasciculus primus*. Copenhagen.
- Benaim N.P. & Absalão R.S. 2011. Deep sea *Yoldiella* (Pelecypoda: Protobranchia: Yoldiidae) from Campos Basin, Rio de Janeiro, Brazil. *Journal of the Marine Biological Association of the United Kingdom* 91 (2): 513–529. <http://dx.doi.org/10.1017/S0025315410001372>
- Beu A.G. 2011. Marine Mollusca of isotope stages of the last 2 million years in New Zealand. Part 3. Gastropoda (Vetigastropoda – Littorinimorpha). *Journal of the Royal Society of New Zealand* 40 (3–4): 59–180. <http://dx.doi.org/10.1080/03036758.2010.500717>

- Blackwood T.J. 2009. *Barneystrombus*, a new genus of Strombidae (Gastropoda) from the Indo-West Pacific, with discussions of included taxa and the general morphology of their shells. *Visaya* 2 (5): 11–17.
- Bouchet P., Rocroi J.P., Frýda J., Hausdorf B., Ponder W.F., Valdés A. & Warén A. 2005. Classification and nomenclator of gastropod families. *Malacologia* 47 (1–2): 1–397.
- Brakoniecki T.F. 1984. A full description of *Loligo sanpaulensis* Brakoniecki, 1984 and a redescription of *Loligo gahi* d’Orbigny, 1835, two species of squid (Cephalopoda; Myopsida) from the southwest Atlantic. *Bulletin of Marine Science* 34 (3): 435–448.
- Brandt R.A.M. 1959. Die Helicellinae der Cyrenaika. *Archiv für Molluskenkunde* 88 (4–6): 81–150.
- Brandt R.A.M. 1968. Description of new non-marine mollusks from Asia. *Archiv für Molluskenkunde* 98 (5–6): 213–289.
- Brandt R.A.M. 1970. New freshwater gastropods from Mekong. *Archiv für Molluskenkunde* 100 (3–4): 183–205.
- Brandt R.A.M. 1974. The non-marine aquatic Mollusca of Thailand. *Archiv für Molluskenkunde* 105: 1–423.
- Breure A.S.H. & Schlögl J. 2010. Additional notes on Orthalicidae from Chimantá massif, Venelzuelan Guayana, with descriptions of new species of *Plekocheilus* Guilding, 1828 (Mollusca: Gastropoda). *Zootaxa* 2416: 51–60.
- Cavallari D.C., Salvador R.B. & Cunha B.R. 2014. Dangers to malacological collections: Bynesian decay and pyrite decay. *Collection Forum* 28 (1–2): 35–46. <http://dx.doi.org/10.14351/0831-0005-28.1.35>
- Coltro J. & Dornellas A.P.S. 2013. A new species of *Anna* (Mollusca: Neogastropoda: Buccinidae) from Brazil. *Zoologia* 30 (1): 97–100. <http://dx.doi.org/10.1590/S1984-46702013000100012>
- Costa F.H.A. 1983. *Anachis helenae*, nova espécie de Columbellidae do litoral brasileiro (Mollusca: Gastropoda). *Anais da Sociedade Nordestina de Zoologia* 1 (1): 95–99.
- Costa P.M.S. & Simone L.R.L. 2006. A new species of *Lucapina* (Vetigastropoda, Fissurellidae) from Canopus Bank, N.E. Brazil. *Strombus* 13 (1): 1–5.
- Costa P.M.S. & Pimenta A.D. 2012. Revision of the genus *Pazinotus* (Gastropoda, Muricidae) from Brazil. *American Malacological Bulletin* 30 (1): 117–126. <http://dx.doi.org/10.4003/006.030.0109>
- Cunha C.M. 2011. A new species of *Acteon* (Opisthobranchia: Acteonidae) from Northeast Brazil. *Zoologia* 28 (2): 229–232. <http://dx.doi.org/10.1590/S1984-46702011000200012>
- Dacosta S., Cunha C.M., Simone L.R.L. & Schrödl M. 2007. Computer-based 3-dimensional reconstruction of major organ systems of a new aeolid nudibranch subspecies, *Flabellina engeli lucianae*, from Brazil (Gastropoda: Opisthobranchia). *Journal of Molluscan Studies* 73: 339–353. <http://dx.doi.org/10.1093/mollus/eym035>
- Davis G. 1979. *The Origin and Evolution of the Gastropod Family Pomatiopsidae, with Emphasis on the Mekong River Triculinae*. The Academy of Natural Sciences of Philadelphia, Allen Press Inc., Kansas.
- Davis G., Subba Rao N.V. & Hoagland K.E. 1986. In search of *Tricula* (Gastropoda: Prosobranchia): *Tricula* defined, and a new genus described. *Proceedings of the Academy of Natural Sciences of Philadelphia* 138 (2): 426–442.
- Domínguez M., García F.J. & Troncoso J.S. 2006. A new species of *Hoplodoris* Bergh, 1880 (Gastropoda: Opisthobranchia: Nudibranchia) from the Atlantic Ocean. *The Nautilus* 120 (4): 150–155.

- Dornellas A.P.S. 2012. Description of a new species of *Calliostoma* (Gastropoda, Calliostomatidae) from Southeastern Brazil. *ZooKeys* 224: 89–106. <http://dx.doi.org/10.3897/zookeys.224.3684>
- Dornellas A.P.S. & Simone L.R.L. 2011. Annotated list of type specimens of mollusks deposited in Museu de Zoologia da Universidade de São Paulo, Brazil. *Arquivos de Zoologia* 42 (1): 1–81. <http://dx.doi.org/10.11606/issn.2176-7793.v42i1p1-81>
- Fernandes M.R., Pimenta A.D. & Leal J.H. 2013. Taxonomic review of Triphorinae (Gastropoda: Triphoridae) from the Vitória-Trindade Seamount Chain, southeastern Brazil. *The Nautilus* 127 (1): 1–18.
- Figueira R.M.A. & Absalão R.S. 2010a. Deep-water Mangeliinae, Taraninae and Clathurellinae (Mollusca: Gastropoda: Comoidea: Turridae) from the Campos Basin, southeast Brazil. *Scientia Marina* 74 (4): 731–743. <http://dx.doi.org/10.3989/scimar.2010.74n4731>
- Figueira R.M.A. & Absalão R.S. 2010b. Deep-water Drilliinae, Cochlespirinae and Oenopotinae (Mollusca: Gastropoda: Turridae) from the Campos Basin, southeast Brazil. *Scientia Marina* 74 (3): 471–481. <http://dx.doi.org/10.3989/scimar.2010.74n3471>
- Francisco J.A.N., Barros J.C.N. & Lima S.F. 2012. Five new species of Arcidae from Brazil with description of new genus: *Paranadara* (Mollusca: Bivalvia). *Journal of the Marine Biological Association of the United Kingdom* 92 (5): 1139–1150. <http://dx.doi.org/10.1017/S0025315411000919>
- Gittenberger E. & Hausdorf B. 2004. The *Orculella* species of the South Aegean Island arc, a neglected radiation (Gastropoda, Pulmonata, Orculidae). *Basteria* 68 (4–6): 93–124.
- Haimovici M. 1988. *Eledone gaucha*, a new species of eledonid octopod (Cephalopoda: Octopodidae) from southern Brazil. *The Nautilus* 102 (2): 82–87. <http://dx.doi.org/10.5962/bhl.part.5184>
- Ihering H. 1907. Les mollusques fossiles du Tertiaire et du Crétacé Supérieur de l'Argentine. *Anales del Museo Nacional de Buenos Aires* (3) 7: 1–611.
- Jardim J.A. & Simone L.R.L. 2010a. Redescription of *Hanleya brachyplax* (Polyplacophora, Hanleyidae) from the south-southeastern Brazilian coast. *Papéis Avulsos de Zoologia* 50 (40): 623–633.
- Jardim J.A. & Simone L.R.L. 2010b. Corrigenda for the paper “Redescription of *Hanleya brachyplax* (Polyplacophora, Hanleyidae) from the south-southeastern Brazilian coast” by Jardim & Simone (2010). *Strombus* 17 (1–2): 14–15.
- Jardim J.A., Abbate D. & Simone L.R.L. 2013. A new species of *Euglandina* (Pulmonata, Spiraxidae) from Brazil. *Journal of Conchology* 41 (3): 327–330.
- Kittel K., Groh K. & Bank R.A. 2012. Nachruf auf Jens Hemmen \* 9.1.1944 – † 20.4.2012. *Mitteilungen der Deutschen Malakozoologischen Gesellschaft* 87: 51–66.
- Lima S.F.B., Barros J.C.N. & Petit R.E. 2007a. A new species of *Gardiela* (Gastropoda: Cancellariidae) from the South Atlantic Ocean off Brazil with discussion of an undescribed species. *The Nautilus* 121 (2): 99–103.
- Lima S.F.B., Tenório D.O. & Barros J.C.N. 2007b. New species of Brazilian deep-water *Terebra* (Caenogastropoda: Terebridae) with first record of *Terebra colombiensis* Simone & Gracia, 2006 from the southwestern Atlantic. *Miscellanea Malacologica* 2 (4): 63–72.
- Lima S.F.B., Barros J.C.N. & Francisco J.A. 2010. A new deep-sea species of *Mitromorpha* (Gastropoda: Conoidea: Conidae) off Brazil. *Journal of Marine Biological Association of the United Kingdom* 90 (3): 599–603. <http://dx.doi.org/10.1017/S0025315409990762>

- Lima S.F.B., Santos F.N. & Absalão R.S. 2013. New species of *Caecum* (Caenogastropoda: Rissosoidea: Caecidae) from the Atlantic Coast of South America (Brazil) with a description of the protoconch and growth stages. *Zoological Science* 30 (9): 767–778. <http://dx.doi.org/10.2108/zsj.30.767>
- Lyons W.G. & Snyder M.A. 2013. The genus *Pustulatirus* Vermeij and Snyder, 2006 (Gastropoda: Fasciolariidae: Peristerniinae) in the Western Atlantic, with descriptions of three new species. *Zootaxa* 3636 (1): 35–58. <http://dx.doi.org/10.11646/zootaxa.3636.1.2>
- Maassen W.J.M. 2000. Notes on terrestrial molluscs of Sumatra, Indonesia, with descriptions of ten new species (Gastropoda, Prosobranchia & Pulmonata). *Basteria* 64 (4–6): 137–150.
- Maassen W.J.M. 2001. Four new Diplommatinidae (Gastropoda, Prosobranchia, Diplommatinidae) from southern Thailand and northern Peninsular Malaysia. *Basteria* 65 (1–3): 51–56.
- Maassen W.J.M. 2002. Remarks on the Diplommatinidae from Sumatra, Indonesia, with descriptions of eleven new species (Gastropoda, Prosobranchia). *Basteria* 66 (4–6): 163–182.
- Maassen W.J.M. 2007. Notes on terrestrial molluscs of the island of Sulawesi. 4. The genus *Diplommatina* (Gastropoda, Caenogastropoda, Diplommatinidae). *Basteria* 71: 189–208.
- Mansur M.C.D. & Pimpão D.M. 2008. *Triplodon chodo*, a new species of pearly fresh water mussel from the Amazon Basin (Mollusca: Bivalvia: Unioidea: Hyriidae). *Revista Brasileira de Zoologia* 25 (1): 111–115. <http://dx.doi.org/10.1590/S0101-81752008000100015>
- Marques R.C. & Simone L.R.L. 2011. A new species of *Ervilia* from North Brazil (Bivalvia, Semelidae). *Journal of Conchology* 40 (6): 651–655.
- Marques R.C. & Simone L.R.L. 2014. *Eurytellina angrensis*, a new species from southeastern Brazilian coast, with anatomical details. *Archiv für Molluskenkunde* 143 (1): 39–50. <http://dx.doi.org/10.1127/arch.moll/1869-0963/143/039-050>
- Mühlhäusser H. 1981. *Strombus kleckhamae* n. subsp. *Spixiana* 4 (3): 319–324.
- Neubert E. & Groh K. 1998. Contributions to the nomenclature and phylogeny of *Boettgeria* O. Boettger, 1863, with description of *Loosjesiella* n. subgen. (Gastropoda: Pulmonata: Clausiliidae). *Basteria* 62 (3–4): 157–168.
- Nordsieck H. 2005a. New Clausiliidae from China and Taiwan. *Archiv für Molluskenkunde* 134 (1): 23–52.
- Nordsieck H. 2005b. Revision of the system of the Peruvian Neniinae, with description of new taxa. *Archiv für Molluskenkunde* 134 (2): 197–221. <http://dx.doi.org/10.1127/arch.moll/0003-9284/134/197-221>
- Nordsieck H. 2010. New taxa of the subfamilies Neniinae and Garnieriinae (Gastropoda: Stylommatophora: Clausiliidae). *Archiv für Molluskenkunde* 139 (1): 45–69. <http://dx.doi.org/10.1127/arch.moll/1869-0963/139/045-069>
- Padula V., Araújo A.K., Matthews-Cascon H. & Schrödl M. 2014. Is the Mediterranean nudibranch *Cratena peregrina* (Gmelin, 1791) present on the Brazilian coast? Integrative species delimitation and description of *Cratena minor* n. sp. *Journal of Molluscan Studies* 80: 575–584. <http://dx.doi.org/10.1093/mollus/eyu052>
- Passos F.D. & Machado F.M. 2014. A new species of *Cyamiocardium* Soot-Ryen, 1951 from shallow waters off Brazil, with a discussion on the anatomical characters of the Cyamiidae (Bivalvia: Cyamioidea). *American Malacological Bulletin* 32 (1): 122–131. <http://dx.doi.org/10.4003/006.032.0110>
- Perez J.A.A. & Haimovici M. 1991. Cephalopod collection of 'Museu de Zoologia da Universidade de Sao Paulo', Sao Paulo, Brazil. *Papéis Avulsos de Zoologia* 37 (16): 251–258.



- Petuch E.J. & Myers R.F. 2014a. New species of Conidae and Conilithidae (Gastropoda: Conoidea) from the Bahamas, Eastern Caribbean, and Brazil. *Xenophora Taxonomy* 3: 34–47.
- Petuch E.J. & Myers R.F. 2014b. Additions to the cone shell faunas (Conidae and Conilithidae) of the Cearaian and Bahian Subprovinces, Brazilian Molluscan Province. *Xenophora Taxonomy* 4: 30–43.
- Pilsbry H.A. 1900. New South American land snails. *Proceedings of the Academy of Natural Sciences of Philadelphia* 52: 385–394.
- Pimenta A.D., Santos F.N. & Absalão R.S. 2008. Review of the genera *Ividia*, *Folinella*, *Oscilla*, *Pseudoscilla*, *Tryptichus* and *Peristichia* (Gastropoda, Pyramidellidae) from Brazil, with description of four new species. *The Veliger* 50 (3): 171–184.
- Pimenta A.D., Absalão R.S. & Miyaji C. 2009. A taxonomic review of the genera *Boonea*, *Chrysallida*, *Parthenina*, *Ivara*, *Fargoa*, *Mumiola*, *Odostomella* and *Trabecula* (Gastropoda, Pyramidellidae, Odostomiinae) from Brazil. *Zootaxa* 2049: 39–66.
- Pimenta A.D., Santos F.N. & Absalão R.S. 2011. Taxonomic revision of the genus *Eulimella* (Gastropoda, Pyramidellidae) from Brazil, with description of three new species. *Zootaxa* 3063: 22–38.
- Pimenta A.D. 2012. Four new species and two new records of Odostomiinae (Gastropoda: Pyramidellidae) from Brazil. *Zoologia* 29 (5): 439–450. <http://dx.doi.org/10.1590/S1984-46702012000500007>
- Poppe G.T. & Goto Y. 1993. *Recent Angariidae*. L'Informatore Piceno, Ancona, Italy.
- Powell W.B. 1927. Mollusca from twenty-three fathoms off Ahipara, N.Z. *Transactions of the New Zealand Institute* 58: 295–300.
- Puillandre N., Duda T.F., Meyer C., Olivera B.M. & Bouchet P. 2015. One, four or 100 genera? A new classification of the cone snails. *Journal of Molluscan Studies* 81: 1–23. <http://dx.doi.org/10.1093/mollus/eyu055>
- Rios E.C. 2009. *Compendium of Brazilian Seashells*. Evangraf, Rio Grande.
- Salvador R.B. & Cavallari D.C. 2013a. A new *Oxychona* species (Gastropoda: Pulmonata: Orthalicidae) from Bahia state, Brazil. *Journal of Conchology* 41 (3): 315–318.
- Salvador R.B. & Cavallari D.C. 2013b. Taxonomic revision of *Leiostracus onager* and *Leiostracus subtuszonatus* (Gastropoda: Pulmonata: Orthalicidae). *Journal of Conchology* 41 (4): 511–518.
- Salvador R.B. & Cavallari D.C. 2014. A new species of *Leiostracus* from Bahia, Brazil (Gastropoda, Pulmonata, Orthalicidae). *Iheringia, Série Zoologia* 104 (1): 39–42.
- Salvador R.B., Cavallari D.C. & Breure A.S.H. 2014a. Corrigendum to “Taxonomic revision of *Leiostracus onager* and *Leiostracus subtuszonatus* (Gastropoda: Pulmonata: Orthalicidae)” by Salvador & Cavallari (2013). *Journal of Conchology* 41 (5): 627–628.
- Salvador R.B., Cavallari D.C. & Simone L.R.L. 2014b. Seguenziidae (Gastropoda: Vetigastropoda) from SE Brazil collected by the Marion Dufresne (MD55) expedition. *Zootaxa* 3878 (6): 536–550. <http://dx.doi.org/10.11646/zootaxa.3878.6.2>
- Simone L.R.L. 2009. Comparative morphology among representatives of main taxa of Scaphopoda and basal protobranch Bivalvia (Mollusca). *Papéis Avulsos de Zoologia* 49 (32): 405–457.
- Simone L.R.L. 2011. Phylogeny of the Caenogastropoda (Mollusca), based on comparative morphology. *Arquivos de Zoologia* 42 (4): 161–323. <http://dx.doi.org/10.11606/issn.2176-7793.v42i4p161-323>
- Simone L.R.L. 2012a. A new genus and species of cavernicolous Pomatiopsidae (Mollusca, Caenogastropoda) in Bahia, Brazil. *Papéis Avulsos de Zoologia* 52 (40): 515–524. <http://dx.doi.org/10.1590/S0031-10492012022000001>

- Simone L.R.L. 2012b. Taxonomical study on a sample of pulmonates from Santa Maria da Vitória, Bahia, Brazil, with description of a new genus and four new species (Mollusca: Orthalicidae and Megalobulimidae). *Papéis Avulsos de Zoologia* 52 (36): 431–439.
- Simone L.R.L. 2012c. Two new species of Tornidae (Caenogastropoda, Rissooidea) from Espírito Santo, Brazil. *ZooKeys* 238: 77–85. <http://dx.doi.org/10.3897/zookeys.238.3884>
- Simone L.R.L. & Cunha C.M. 2012. Taxonomic study on the molluscs collected in Marion-Dufresne expedition (MD55) to SE Brazil; Xenophoridae, Cypraeoidea, mitriforms and Terebridae (Caenogastropoda). *Zoosystema* 34 (4): 745–781. <http://dx.doi.org/10.5252/z2012n4a6>
- Simone L.R.L. 2013a. A new Brazilian tornid is possibly the flattest coiled snail. *Journal of Molluscan Studies* 79: 187–189. <http://dx.doi.org/10.1093/mollus/eyt004>
- Simone L.R.L. 2013b. *Habeas*, a new genus of Diplommatinidae from central Bahia, Brazil (Caenogastropoda), with description of three new species. *Journal of Conchology* 41 (4): 519–525.
- Simone L.R.L. & Casati R. 2013. New land mollusk fauna from Serra da Capivara, Piauí, Brazil, with a new genus and five new species (Gastropoda: Orthalicoidea, Streptaxidae, Subulinidae). *Zootaxa* 3683 (2): 145–158. <http://dx.doi.org/10.11646/zootaxa.3683.2.4>
- Simone L.R.L. 2014. Taxonomic study on the molluscs collected during the Marion-Dufresne expedition (MD55) off SE Brazil: the Naticidae (Mollusca: Caenogastropoda). *Zoosystema* 36 (3): 563–593. <http://dx.doi.org/10.5252/z2014n3a2>
- Simone L.R.L. & Cunha C.M. 2014. Taxonomical study on the mollusks collected in Marion-Dufresne (MD55) and other expeditions to SE Brazil: the Fissurellidae (Mollusca, Vetigastropoda). *Zootaxa* 3835 (4): 437–468. <http://dx.doi.org/10.11646/zootaxa.3835.4.2>
- Souza P.S. de & Coovert G.A. 2001. Revision of the recent *Bullata* Jousseaume, 1875 (Gastropoda: Marginellidae) with the description of two new species. *The Nautilus* 115 (1): 1–14. <http://dx.doi.org/10.5962/bhl.part.11263>
- Spotorno P. & Simone L.R.L. 2013. First record of *Thylaeodus* (Gastropoda: Vermetidae) from the Equatorial Atlantic Ocean, with the description of a new species. *Zoologia* 30 (1): 88–96. <http://dx.doi.org/10.1590/S1984-46702013000100011>
- Subai P. 2005. Revision der Gattung *Codringtonia* Kobelt 1898 (Gastropoda: Pulmonata: Helicidae: Helicinae). *Archiv für Molluskenkunde* 134 (1): 65–119. <http://dx.doi.org/10.1127/arch.moll/0003-9284/134/065-119>
- Tavares M. 1999. The cruise of the Marion Dufresne off the Brazilian coast: account of the scientific results and list of stations. *Zoosystema* 21 (4): 597–605.
- Temcharoen P. 1971. New aquatic molluscs from Laos. *Archiv für Molluskenkunde* 101 (1): 91–109.
- Tenório D.O., Barros J.C.N., Francisco J.A. & Silva G.F. 2011. New species of Architectonicidae (Gastropoda Heterobranchia) from northeastern Brazil. *Tropical Zoology* 24: 173–191.
- Vecchione M., Brakoniecki T.F., Natsukari Y. & Hanlon R.T. 1998. A provisional generic classification of the family Loliginidae. In: Voss N.A., Vecchione M., Toll R.B. & Sweeney M.J. (eds) *Systematics and Biogeography of Cephalopods*. Vol. 1: 215–222. Smithsonian Contributions to Zoology 586, Smithsonian Institution Press, Washington, DC.
- WoRMS. 2015. Mollusca [online]. Available from: <http://www.marinespecies.org/aphia.php?p=taxdetails&id=51> [accessed 10 Nov. 2015]

*Manuscript received: 12 June 2015*

*Manuscript accepted: 20 February 2016*

*Published on: 18 July 2016*

*Topic editor: Rudy Jocqué*

*Section editor: Kurt Jordaens*

*Desk editor: Charlotte Thionois*

Printed versions of all papers are also deposited in the libraries of the institutes that are members of the *EJT* consortium: Muséum national d'Histoire naturelle, Paris, France; Botanic Garden Meise, Belgium; Royal Museum for Central Africa, Tervuren, Belgium; Natural History Museum, London, United Kingdom; Royal Belgian Institute of Natural Sciences, Brussels, Belgium; Natural History Museum of Denmark, Copenhagen, Denmark; Naturalis Biodiversity Center, Leiden, the Netherlands.

# ZOBODAT - [www.zobodat.at](http://www.zobodat.at)

Zoologisch-Botanische Datenbank/Zoological-Botanical Database

Digitale Literatur/Digital Literature

Zeitschrift/Journal: [European Journal of Taxonomy](#)

Jahr/Year: 2016

Band/Volume: [0213](#)

Autor(en)/Author(s): Cavallari Daniel C., Dornellas Ana Paula S., Simone Luiz Ricardo L.

Artikel/Article: [Second annotated list of type specimens of molluscs deposited in the Museu de Zoologia da Universidade de São Paulo, Brazil 1-59](#)