



HARVARD UNIVERSITY
LIBRARY
OF THE
MUSEUM OF COMPARATIVE ZOOLOGY



FROM THE
WILLARD PEELE HUNNEWELL
(CLASS OF 1904)

MEMORIAL FUND

42910

The income of this fund is used for the purchase of entomological books

July 14, 1915.

The
Macrolepidoptera
of the World

== A systematic description ==
of the known Macrolepidoptera

edited with the collaboration of well-known specialists

by

Dr. Adalbert Seitz, Professor Ph. D.

I. Section 3. Volume: The Palearctic Noctuidae.

Plates.



STUTTGART

Verlag des Seitz'schen Werkes (Alfred Kern)

1914.

1.1
21 5

All rights reserved.

3. Volume

Index of Plates.

The numbers refer to the plates.

- Episteme 1
 Chelonomorpha 1
 Mimeusemia 1
 Scrobigeria 1
 Syfania 1
 Asteropetes 1
 Zalissa
 Ophthalmis 1
 Panthea 2
 Moma 2
 Canna 2
 Daseochaeta 2
 Diphtherocome 2
 Diphthera 2
 Colocasia 2
 Oxycesta 2
 Eogena 2
 Euromioia 2
 Simyra 2
 Arsilonche 2
 Leiometopon 2
 Acronicta 2, 3, 75
 Chamaepora 3
 Anacronicta 3
 Panthauma 4
 Xanthomantis 4
 Metachrostis 4
 Euxoa 5—7, 12, 15, 18
 Rhyacia 6—13, 15, 21
 Nyssoconemis 13
 Epigena 13
 Hermonassa 13, 15
 Amphitrota 15
 Perissandria 13
 Xestia 13, 15
 Aplectoides 13
 Anomogyna 13, 14, 18
 Eurois 14
 Cerastis 14
 Orthosia 14
 Mythimna 14
 Hypoxestia 14
 Naenia 14
 Epilecta 14
 Triphaena 14, 15
 Eueretagrotris 15
 Rhynchagrotis 15
 Isochlora 15
 Actinotia 15
 Anhausta 12
 Blepharita 15
 Paraxestia 15
 Barathra 15
 Discestra 15
 Craterestra 15
 Scotogramma 12, 15
 Haderonia 15
 Polia 16—18
 Harmodia 17, 18
 Aplecta 19, 20
 Pachetra 19, 20
 Hadenia 19
 Tholera 19
 Thargeia 20
 Odontelia 20
 Hypobarathra 20
 Conisania 21
 Onichestra 19
 Protonestra 20
 Epia 20, 21
 Cardepiia 21
 Trichoclea 20, 21
 Manobia 20, 21
 Lasianobia 20
 Lasiestra 20, 21
 Lasionycta 20, 21
 Hadula 20, 21
 Tiracola 21
 Hyssia 20, 21
 Eriopygodes 21
 Monostola 20, 21
 Xylomania 20, 21
 Perigrapha 21
 Monima 20—22
 Clavipalpula 22
 Brithys 20
 Cerapteryx 21
 Hyperiodes 23, 24
 Hyphilare 23, 24
 Sideridis 23—25
 Meliana 25
 Brachygalea 28
 Cucullia 26—28
 Copicucullia 29
 Cheligalea 29
 Argyromata 29
 Lophoterges 28
 Callierges 24
 Copiphana 24
 Metopoceras 24, 28
 Ammetopa 24
 Cleophana 24
 Amephana 24
 Omphalophana 24, 28, 29
 Calophasia 24, 28, 29
 Leucochlaena 28, 29
 Ulochlaena 28, 29
 Derthisa 28, 29
 Oncocnemis 28, 29
 Copitype 23
 Brachionycha 29
 Dasypolia 28, 29
 Bombycia 27, 30
 Hillia 28
 Aporophyla 28, 30
 Chloantha 30
 Euscotia 30
 Lithophane 28, 30, 31
 Xylina 31
 Dichonia 31
 Thecophora 31
 Dryobota 31
 Meganephria 31, 32
 Calotaenia 32
 Eumichtis 32
 Crino 28, 32
 Agriopsis 32
 Lamprosticta 32
 Crypsedra 32
 Dryobotodes 32, 33
 Valeria 33
 Antitype 33, 34
 Rhizotype 34
 Stenostigma 34
 Bryomima 34, 34
 Euxenistis 34
 Blepharidia 28, 34
 Dimya 34
 Dasystemum 34, 35
 Dasythorax 28, 35
 Eupsilia 35
 Epiglaea 35
 Orbona 35
 Xantholeuca 35
 Conistra 35, 36
 Omphaloscelsis 36
 Spudaea 36
 Orrhodiella 28
 Amathes 28, 36, 37
 Atethmia 28
 Cosmia 21, 28
 Telorta 28
 Perinaenia 38
 Pyrois 38
 Amphipyra 38, 39
 Gracilipalpus 42
 Stygiostola 38
 Orthogonia 38, 39
 Mania 39, 41
 Dipterygia 38
 Parastichtis 39, 40
 Oligia 40—42
 Eremobia 41
 Gerbathodes 41, 42
 Atrachea 41
 Crymodes 41, 42
 Sidemia 41, 42
 Phoebophilus 41, 42
 Heterographa 41
 Heteromma 41
 Heraema 41
 Margelana 41
 Eremopola 41
 Centropodia 41
 Pseudopseustis 41
 Pseudohadena 41—43
 Luperina 43
 Lasiplexia 43
 Pareuplexia 42
 Trachea 43
 Euplexia 43, 44
 Trigonophora 44
 Chutapha 44
 Habryntis 44
 Conservula 44
 Cobalos 44
 Oroplexia 44
 Eriopus 42, 44
 Telesilla 44
 Callogonia 44
 Plusilla 44
 Virgo 44
 Harrisimemna 44
 Aucha 44
 Polyphaeus 42, 44
 Triphaenopsis 42, 44
 Talpophila 44
 Jambia 48
 Bryoleuca 48
 Araea 48
 Chytouix 44, 48
 Stilbina 48
 Hypeuthina 42, 48
 Pseudoligia 42
 Scotocampa 48
 Matopo 48
 Delta 42
 Lithomoia 42
 Pulcheria 42
 Antha 42
 Rhabinopteryx 42
 Epimecia 42
 Fergana 42
 Stilbia 42
 Praestilbia 48
 Hypostilbia 42, 48
 Amphydriana 42
 Prodenia 42
 Spodoptera 42
 Laphygma 48
 Athetis 42, 45, 48
 Prometopus 48
 Acosmetia 45, 48
 Petilampa 45
 Dysmilichia 45
 Proxenus 45, 48
 Radinogoes 45, 48
 Haemassia 45
 Galgula 50
 Balsa 48
 Psilomonodes 45
 Condica 45
 Propsalta 18, 45
 Scioptila 47
 Perigea 47
 Hadjina 47
 Xylomoia 47
 Catamecia 47
 Namangana 47
 Gortyna 46
 Apamea 46
 Xanthoecia 46
 Hydroecia 46
 Brachyxanthia 46
 Pyrrhia 46
 Ipimorpha 46
 Meristis 46
 Dadica 46
 Strepselydna 46
 Elydna 46
 Radinacra 46
 Calymnia 47
 Pinaclopus 47
 Metopoplus 47
 Mycteroplus 47
 Dicycla 47
 Enargia 18, 47—49
 Phragmitiphila 49
 Rhizedra 49
 Arenostola 49
 Archanara 49
 Coenobia 48
 Nonagria 48
 Oria 48
 Argyrospila 48
 Sesamia 48
 Calamia 48
 Sphragifera 48
 Chasminodes 48
 Enterpia 48
 Synthymia 48
 Megalodes 48
 Paraegle 48
 Metaegle 48
 Aegle 48
 Opsyra 48

- Protoseudyra 48
 Heliocheilus 50
 Chloridea 50
 Rhodoleptra 50
 Chariclea 50
 Aedophron 50
 Melicleptra 50
 Timora 51
 Adisura 51
 Hebdomochondra 51
 Erythrophaia 51
 Cladocerotis 50
 Anartomorpha 48, 50
 Schöyenia 48, 50
 Orosagrotis 50
 Grumia 50
 Oxytrypia 50
 Auarta 50
 Panolis 50
 Emia 50
 Sympistis 50
 Hypsophyla 50
 Cteipolia 50
 Heliothis 50
 Pyrocleptra 50
 Xanthothrix 50
 Apaustis 50
 Panemeria 50
 Janthinea 50
 Stenoecia 50
 Micriantha 50
 Stemmaphora 50
 Omorphina 50
 Mesotrosta 50
 Micraeschus 51
 Penisa 51
 Polyorycta 51
 Leptosia 51, 52
 Glaphyra 51
 Eublema 51
 Calymma 51
 Coccidiphaga 51
 Thalomicro 52
 Porphyria 51, 52
 Autoba 51
 Oruza 51
 Hyposada 51
 Sophita 52
 Corgatha 51
 Stenoloba 51, 52
 Xantholeuca 52
 Phyllophila 51
 Ozarba 51, 52
 Amyma 51
 Ilattia 51, 52
 Berresa 51
 Maliattha 51, 52
 Hyperstrotia 52
 Lithacodia 52
 Micardia 22, 52
 Eustrotia 52
 Eulocastra 51, 52
- Thalerastria 52
 Naranga 51
 Metaemene 52
 Flammona 52
 Nothosterrha 52
 Erastria 52
 Tarache 52
 Hoplotarache 51, 52
 Eutelina 53
 Anuga 53
 Mimanuga 53
 Lophoptera 53
 Nycteola 53
 Sarrothripus 53
 Characoma 53
 Lamprothripa 53
 Eligma Bd. 2, Taf. 13
 Gadirtha 53
 Blenina 53
 Risola 53
 Sinna 53
 Gabala 53
 Siglophora 53
 Chionomera 53
 Tyana 53
 Earias 53
 Hylophila 53
 Hylophilina 53
 Parhylophila 60
 Cletrophora 53
 Carea 52
 Aiteta 52
 Hepatica 52
 Gelastocera 52
 Churia 52
 Kerala 52
 Macrochthonia 52
 Acontia 52
 Mormonia 54, 63
 Catocala 54—57, 63
 Ephesia 56, 57, 63
 Ulotrichopus 63
 Ecclita 58
 Entomogramma 58
 Cocytodes 58
 Agonista 58
 Nyctipao 58, 59, 75
 Patula 58
 Metopta 58
 Enmonodia 59, 60
 Speiredonia 59, 60
 Dermaleipa 60
 Artena 60
 Minucia 60, 63
 Anua 60, 61
 Pindara 61
 Ophiusa 61, 63
 Naxia 61
 Grammodes 61
 Calciope 61
 Pelomia 61
 Remigia 61
- Cauninda 61, 63
 Ercheia 61
 Anisoneura 62
 Hypoglaucitis 62, 63
 Clytie 62, 63
 Alamis 62
 Pericyma 62
 Cortyta 62, 63
 Anydrophila 62
 Cerocala 62
 Leucanitis 62
 Leucomelas 62
 Gonospileia 62
 Caloplusia 64
 Autographa 64
 Syngrapha 64
 Phytometra 64, 75
 Plusidia 65
 Chrysoptera 65
 Abrostola 65
 Cosmophila 66
 Rusicada 66
 Scoliopteryx 52
 Ophideres 66
 Adris 66
 Monas 66
 Hulodes 66
 Ericeia 66
 Sypna 66, 67, 75
 Polydesma 67
 Pandesma 67
 Belciana 67
 Batracharta 67
 Erygia 67
 Capnodes 68, 70
 Diomea 70
 Apopestes 68
 Autophila 68
 Tathorhyncus 68
 Dinumma 67
 Toxocampa 68
 Exophila 68
 Chrysorithrum 68
 Arcte 67
 Catephia 67
 Anophia 67
 Aedia 67
 Serrodes 68
 Hypaetra 68
 Lacera 68
 Oxyodes 68
 Ischyja 68
 Platyja 68
 Episparis 68
 Chrysopera 68
 Hamodes 68
 Blastorhynchus 69
 Azazia 69
 Hyospila 69
 Hypocala 69
 Calpe 69, 70
 Oraesia 69
- Deva 70
 Pasipeda 70
 Calesia 70
 Acantholipes 70
 Loxioda 70
 Dragana 70
 Brevipecten 70
 Scedopla 70
 Anumeta 70
 Aleucanitis 70
 Armada 70, 74
 Eremonoma 71
 Metopistis 71
 Marsipophora 71
 Imitator 74
 Epharmottomena 71
 Metoponrhis 74
 Aethia 71
 Laspeyria 71, 74
 Colobochyla 71, 74
 Parascotia 71, 74
 Epizeuxis 71, 74
 Prothymia 71, 74
 Raparna 71, 74
 Hingula 71
 Orectis 74
 Paragona 71
 Chara 71, 74
 Rivula 71
 Araeognatha 71, 74
 Psimada 71
 Avita 74
 Megazethes 71, 74
 Zethes 71
 Pangraptia 71, 74
 Tamba 74
 Lophomilia 71
 Lophograptia 71, 74
 Dierna 71
 Talapa 74
 Ectogonia 71, 74
 Megalocena 71, 74
 Pseudaglossa 71, 74
 Edessena 72
 Cidariplura 71, 74
 Simplicia 72
 Nodaria 72
 Zanclognatha 72, 74, 75
 Herminia 12, 72
 Pechipogo 72
 Badiza 74
 Bleptina 72, 74
 Bertula 72
 Hydrillodes 72
 Dichromia 72
 Rhynchina 72, 73, 75
 Rhynchodontodes 73
 Bomolocha 73, 75
 Hypena 73, 75
 Hypenodes 73
 Schrankia 73
 Aventiola 74

ACARISTIDAE.

III.

a



lectrix



adulatrix



beatrix

b



japona



austeni



persimilis

c



amatrix



chinensis



noctuina

d



bieti



girandeaui



oberthueri



dejeani



dubernardi

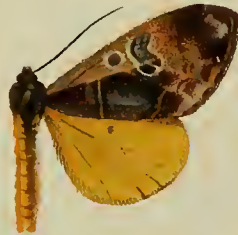
e



subflava



mandarina



flava



subalba

f



venusta

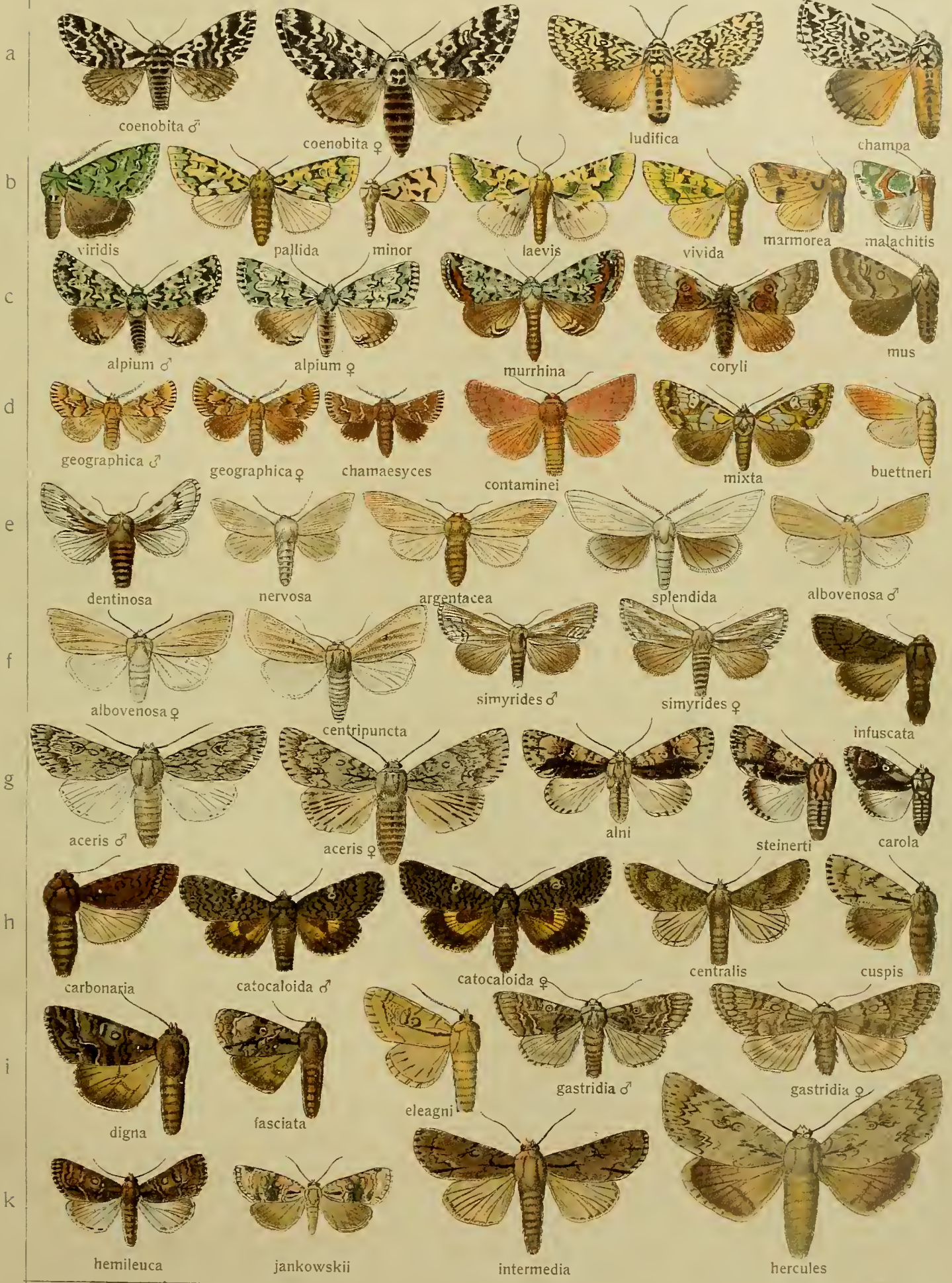


albifasciata



vithoroides

PANTHEA - ACRONICTA



Pars I. Fauna palaeartica 3.

ACRONICTA - ANACRONICTA



Pars I. Fauna palaeartica 3.

ACRONICTA - METACHROSTIS

III

4



EUXOIA



Pars I. Fauna palaeartica 3.

EUXOIA



Pars I. Fauna palaeartica 3.

EUXOIA

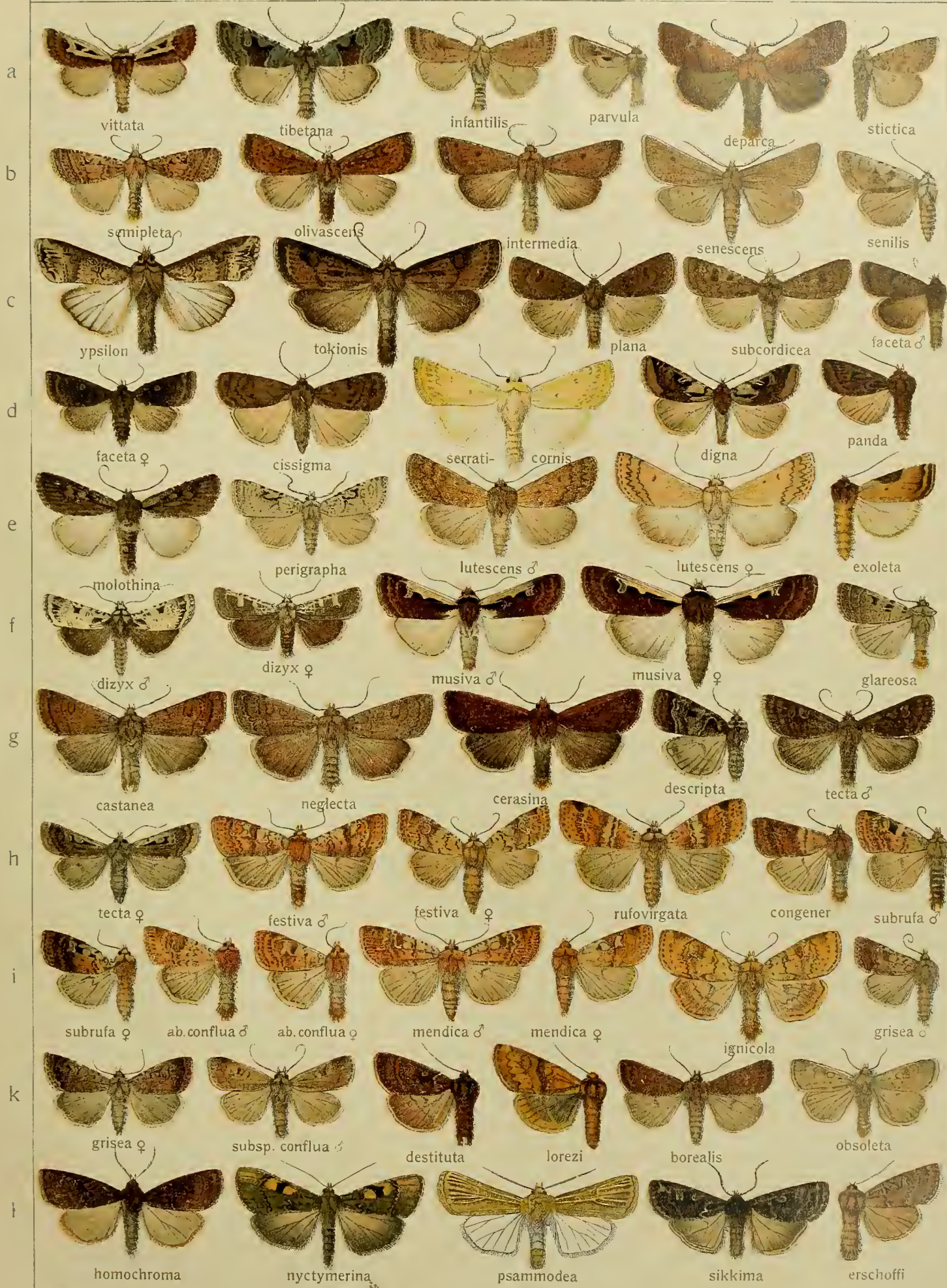


Pars I. Fauna palaeartica 3.

RHYACIA

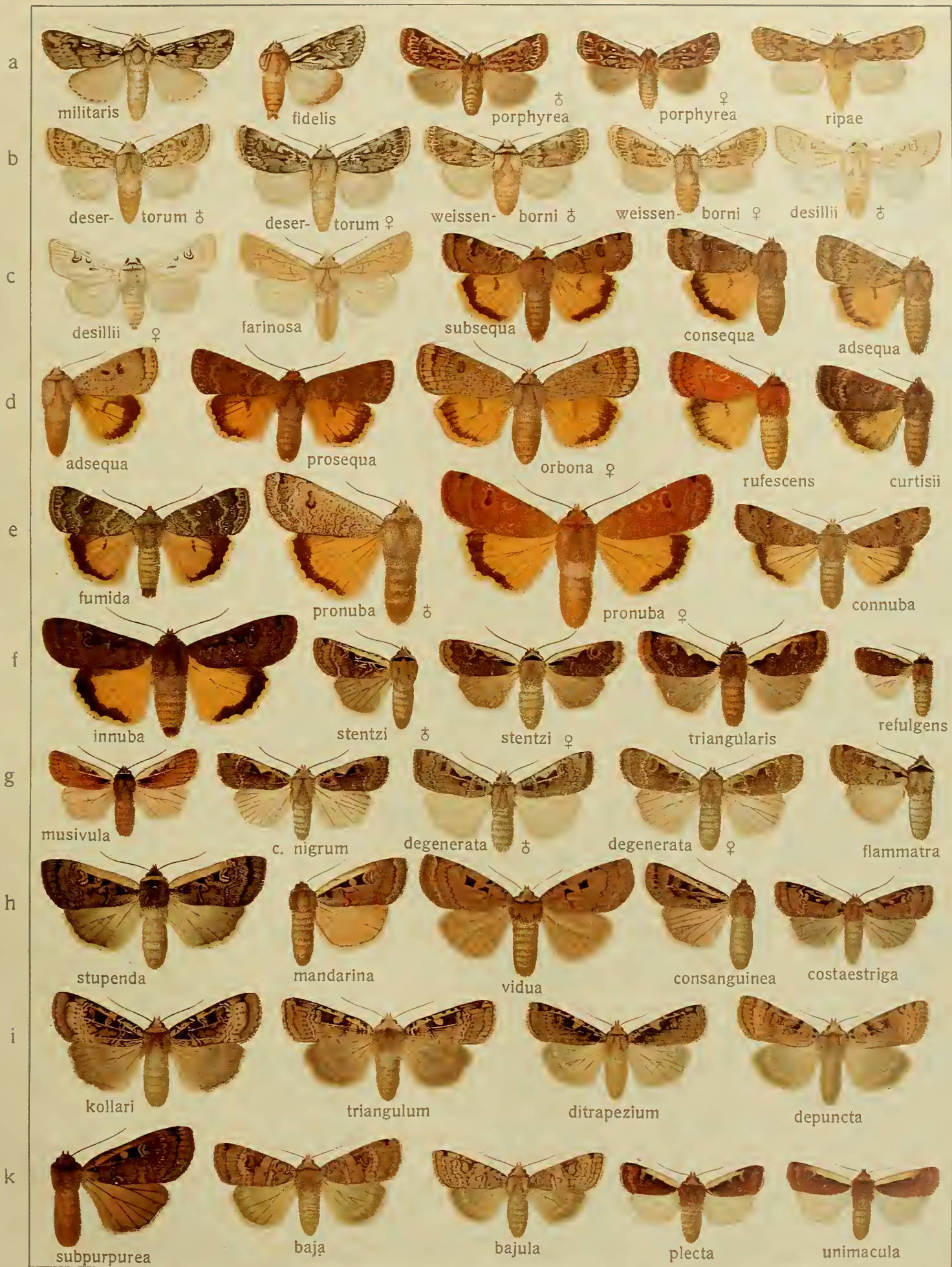
III

8



Pars I. Fauna palaeartica 3.

RHYACIA



Pars I. Fauna palaeartica 3.

RHYACIA



Pars I. Fauna palaeartica 3.

RHYACIA



Pars I. Fauna palaeartica 3.

Euxoa-Scotogramma.



Pars I. Fauna palaeartica 3.

RHYACIA-ANOMOGYNA

III.



Pars I. Fauna palaeartica 3.

ANOMOGYNA-TRIPHAENA

III.

14.

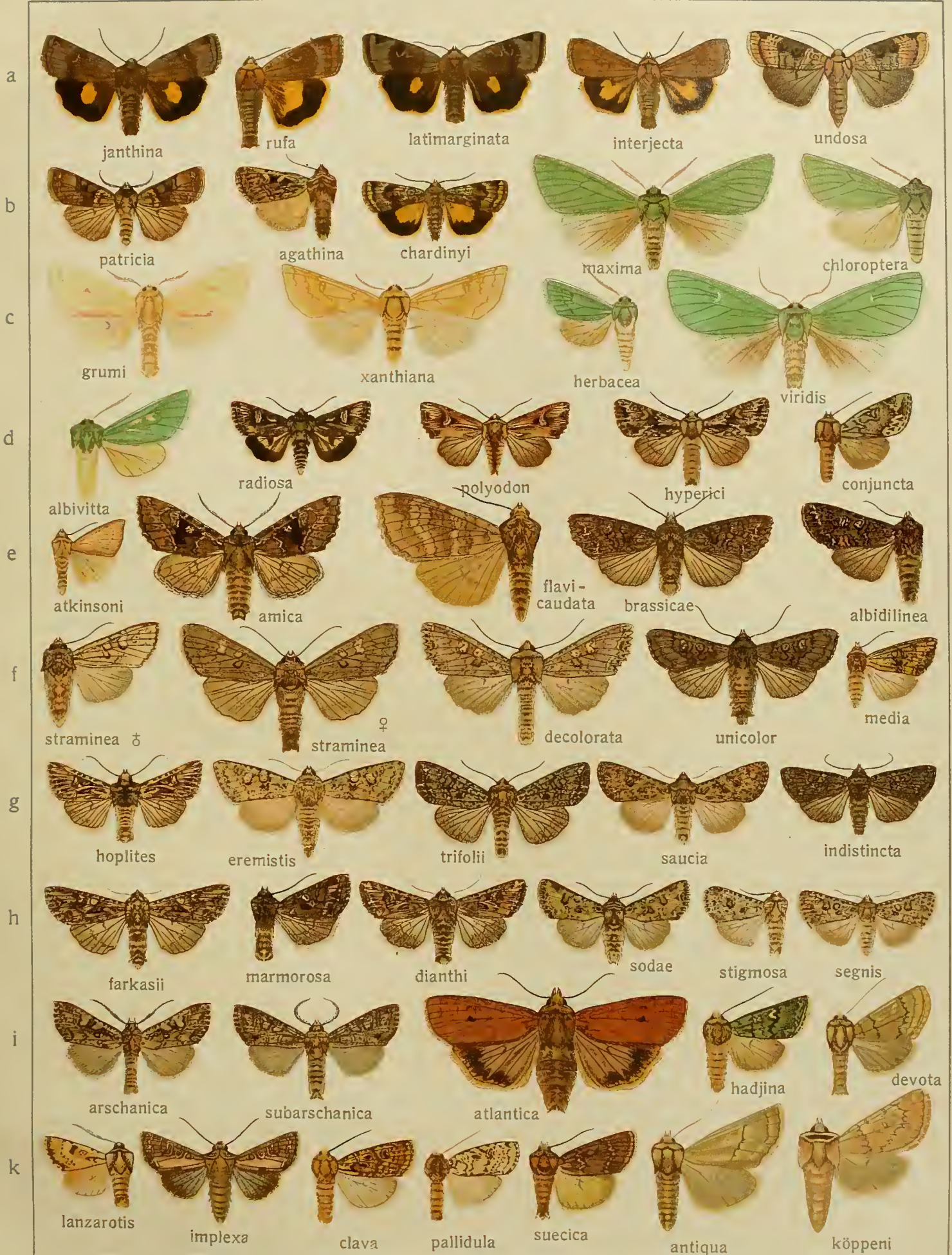


Pars I. Fauna palaeartica 3.

Thriphaena-Xestia.

III.

15.

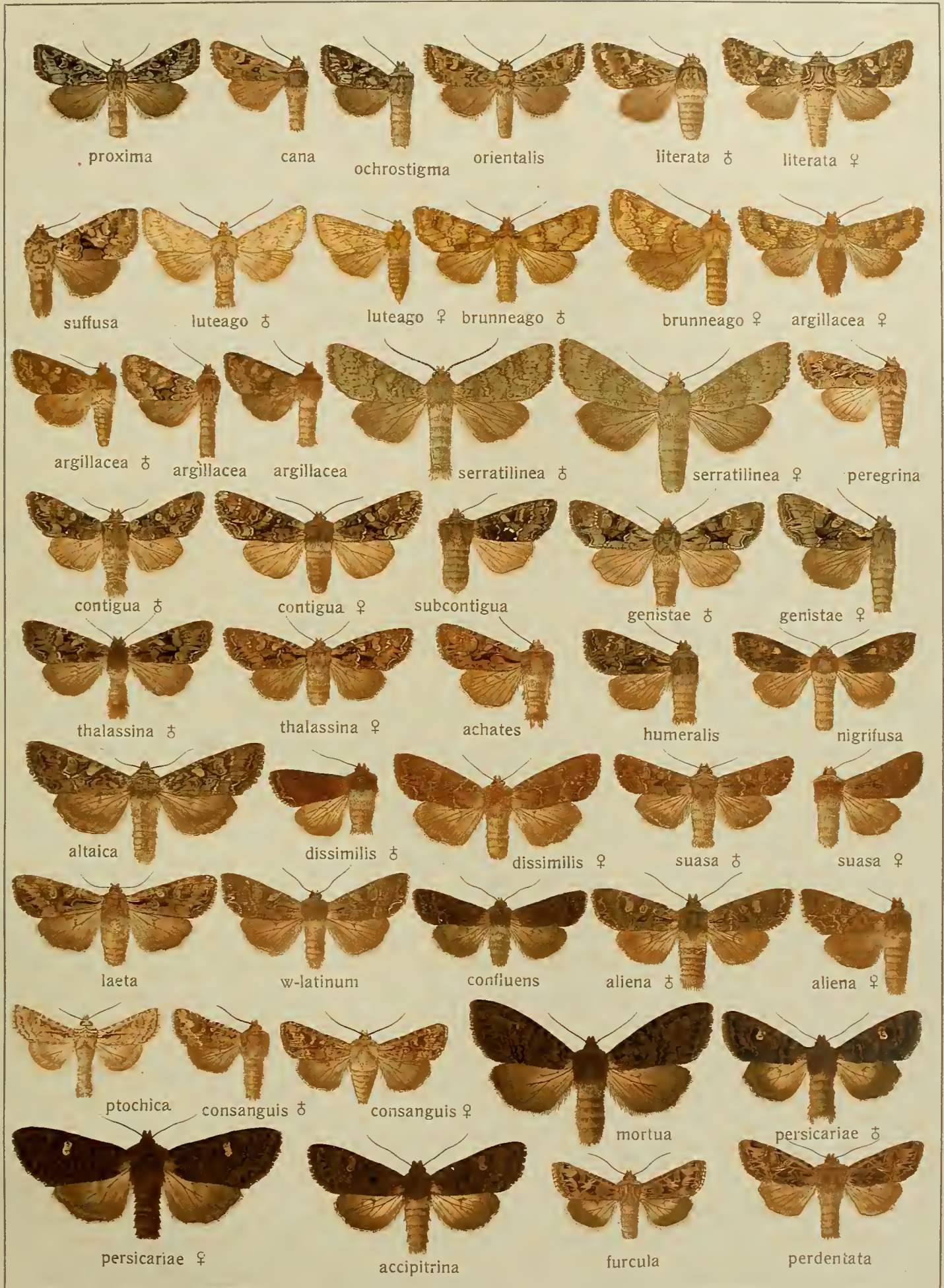


Pars I. Fauna palaeartica 3.

POLIA.

III.

16.



Pars I. Fauna palaeartica 3.

POLIA-HARMODIA.

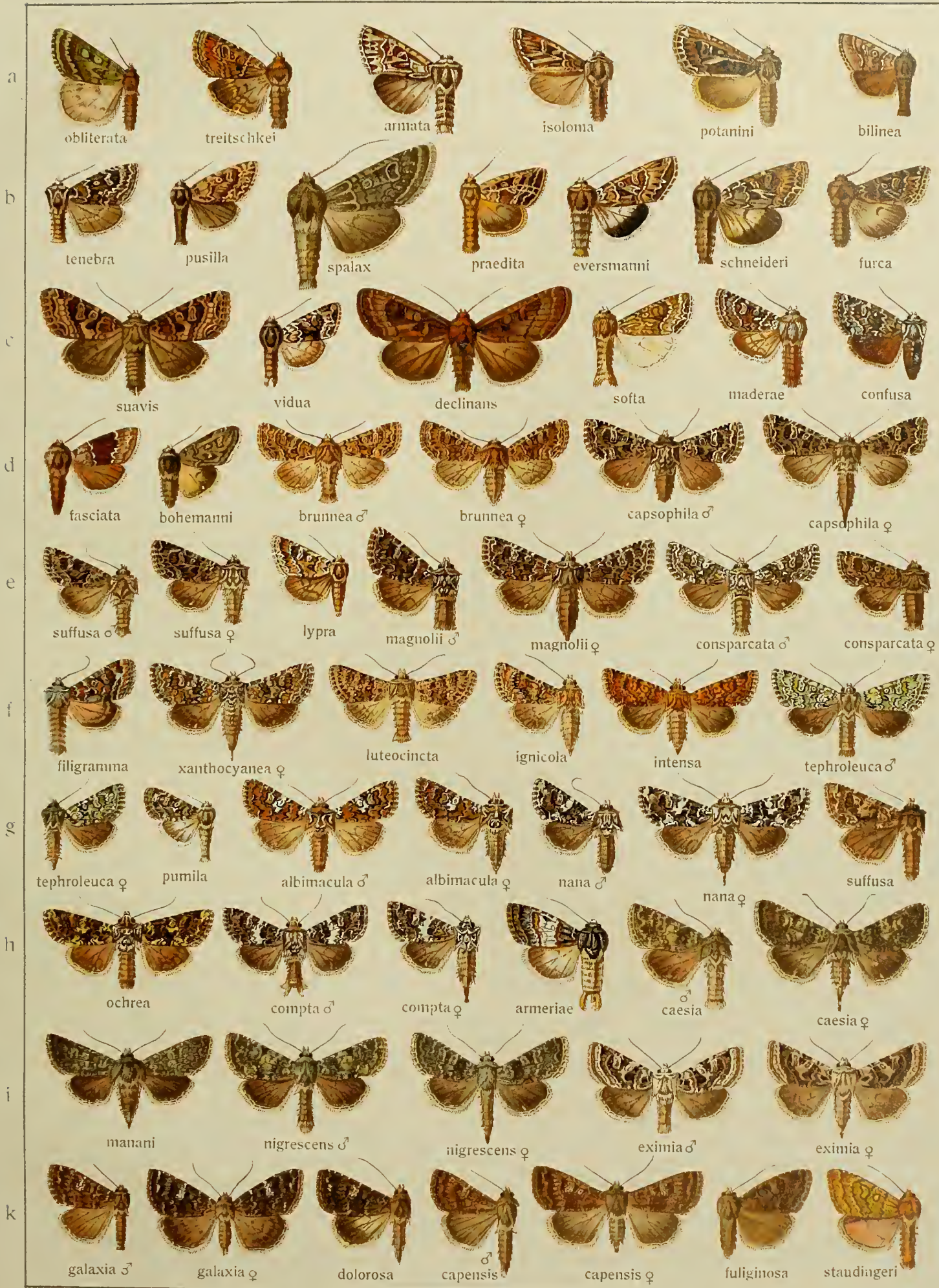
III.

17.



Pars I. Fauna palaeartica 3.

ANOMOGYNA-ENARGIA



Pars I. Fauna palaeartica 3.

APLECTA-THOLERA.

III.

19.



Pars I. Fauna palaeartica 3.

Aplecta-Cerapteryx.

III.

20.



Pars I. Fauna palaeartica 3.

CONISANIA-MONIMA.

III.

21.



Pars I. Fauna palaeartica 3.

MONIMA-CLAVIPALPULA.

III.

22.



Pars I. Fauna palaeartica 3.

ERIOPTYGA-LEUCANIA.



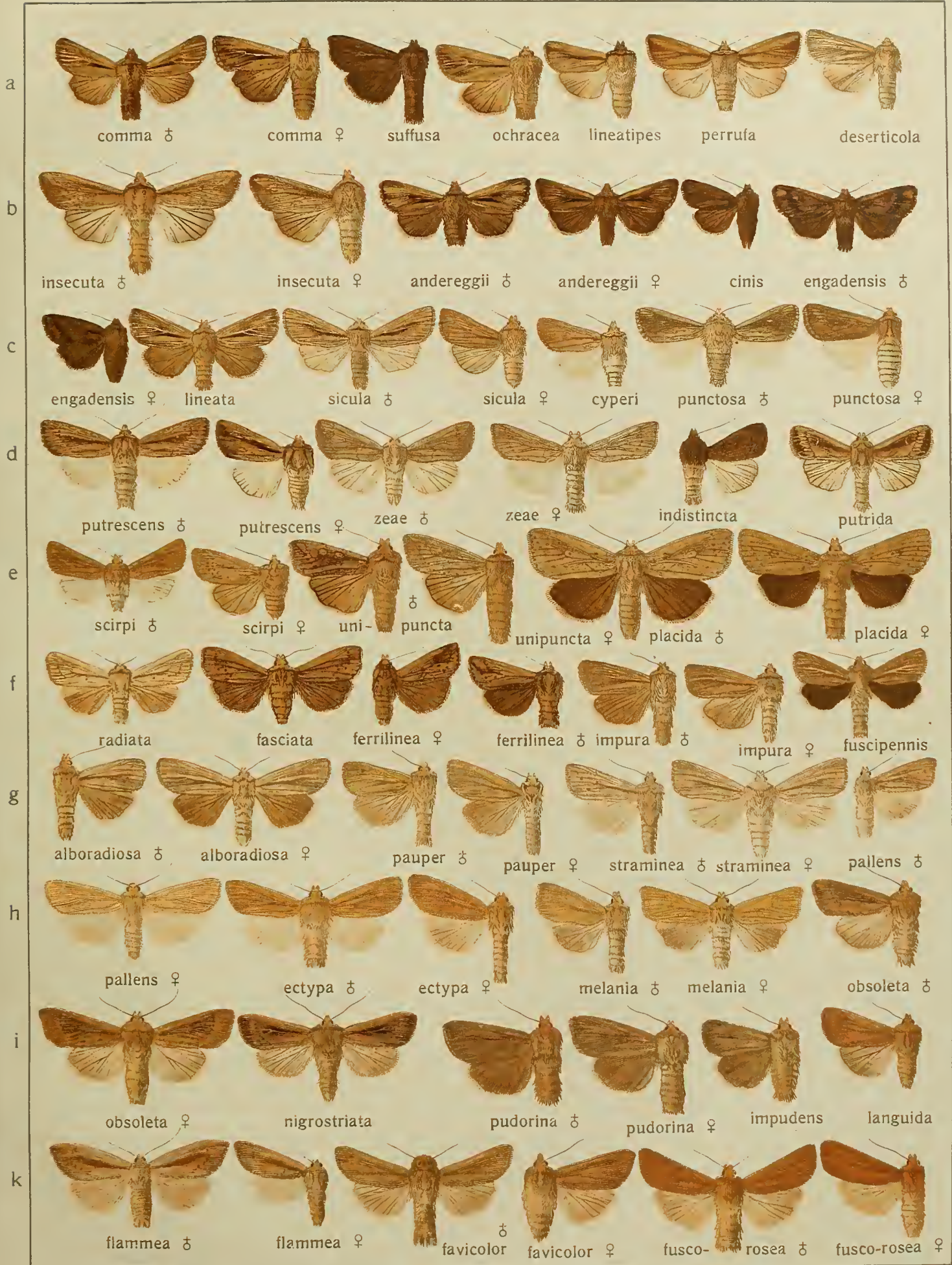
Pars I. Fauna palaeartica 3.

LEUCANIA - COSMIA



Pars I. Fauna palaeartica 3.

SIDERIDIS-MELIANA.



Part 1. Fauna palaeartica 3.

CUCULLIA.

III.

26.



Pars I. Fauna palaeartica 3.

CUCULLIA.



Pars I. Fauna palaeartica 3.

CUCULLIA - TELORTA



Pars I. Fauna palaeartica 3.

Copicucullia-Bombycia.

III.

29.



Pars I. Fauna palaeartica 3.

Bombycia-Lithophane.

III.

30.

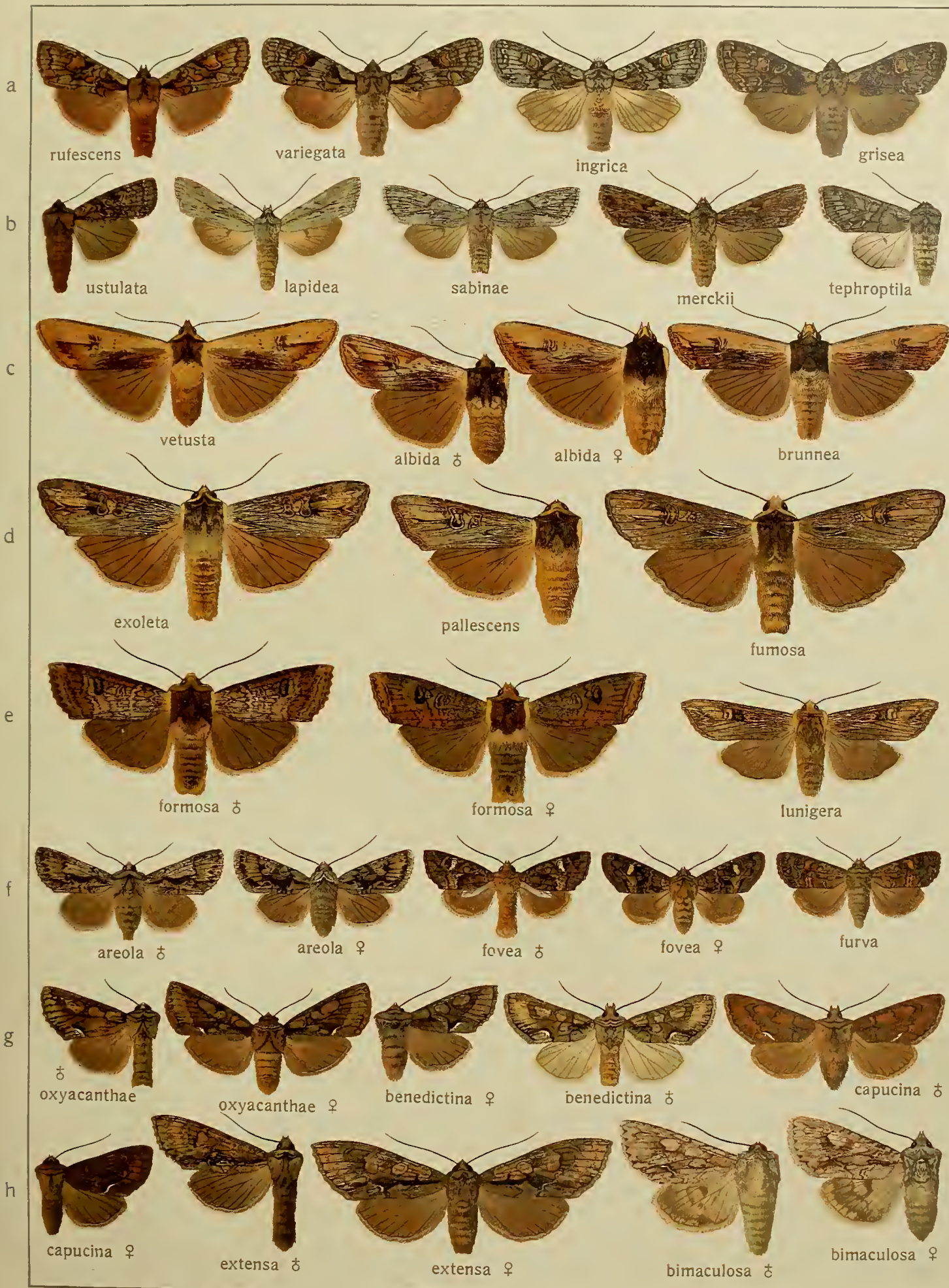


Pars I. Fauna palaeartica 3.

Lithophane-Meganephria.

III.

31.



Pars I. Fauna palaeartica 3.

Meganephria-Dryobotodes.

III.

32.



Pars I. Fauna palaeartica 3.

Dryobotodes-Antitype.

III.

33.



ANTITYPE - DASYSYTERNUM



Pars I. Fauna palaeartica 3.

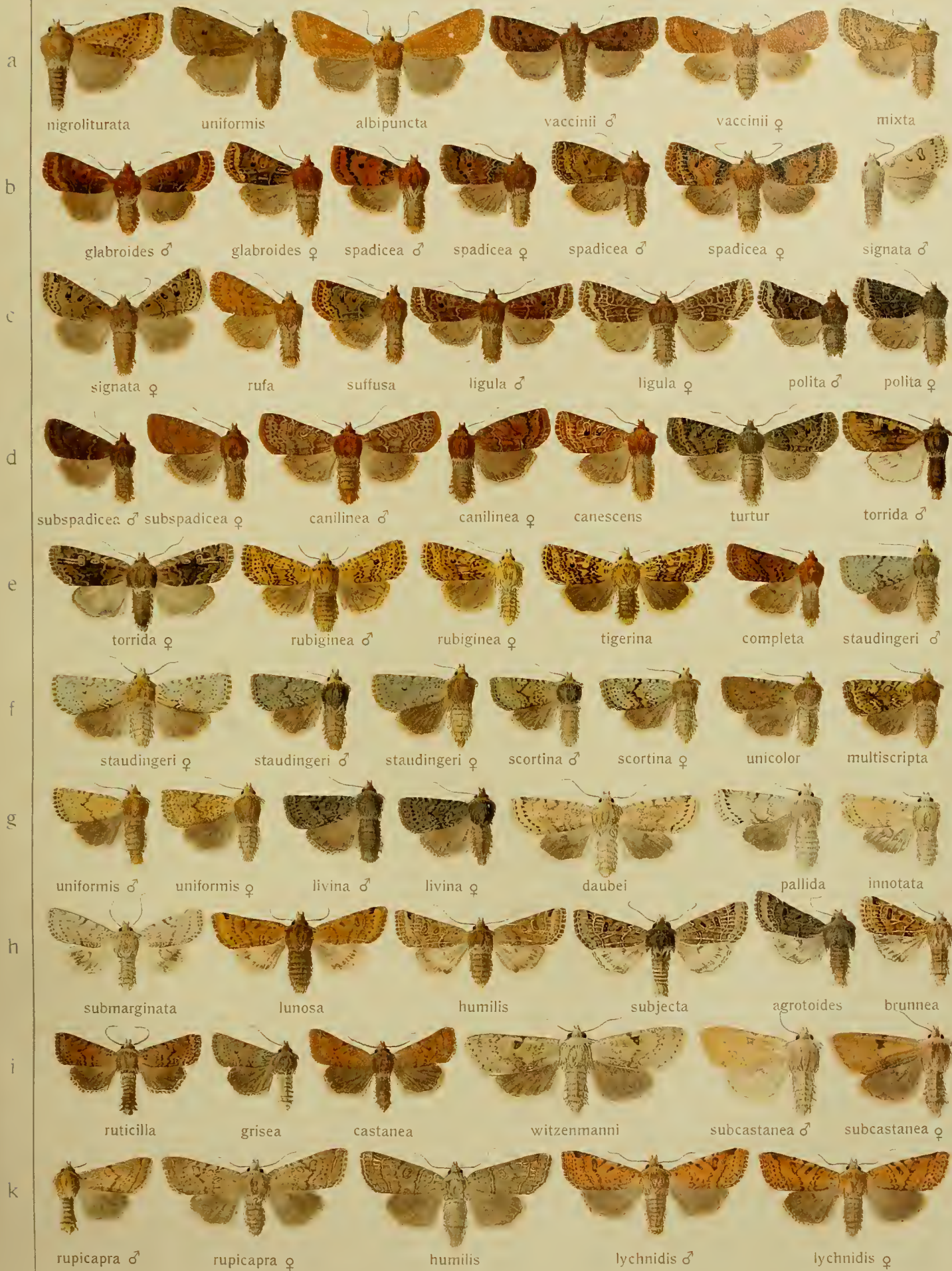
DASYSTERNUM - CONISTRA

III

35



CONISTRA - AMATHES



Pars I. Fauna palaeartica 3.

A M A T H E S

III



Pars I. Fauna palaeartica 3.

PERINAENIA - ORTHOGONIA



Pars I. Fauna palaeartica 3.

ORTHOAGONIA - PARASTICTIS



PARASTICHTIS - OLIGIA



OLIGIA - PSEUDOHADENA



GRACILIPALPUS - PSEUDOHADENA



III GRACILIPALPUS - PSEUDOHADENA



EUPLEXIA-CHYTONIX



Pars I. Fauna palaeartica 3.

ATHETIS - PROSPALTA



Plat. I. Fauna palaeartica 3.

GORTYNA-ELYDINA



Pars I. Fauna palaeartica 3.

SCIOPTILA - ENARGIA



Pars I. Fauna palaeartica 3.

JAMBIA - PROTOSEUDYRA



ENARGIA - ARCHANARA

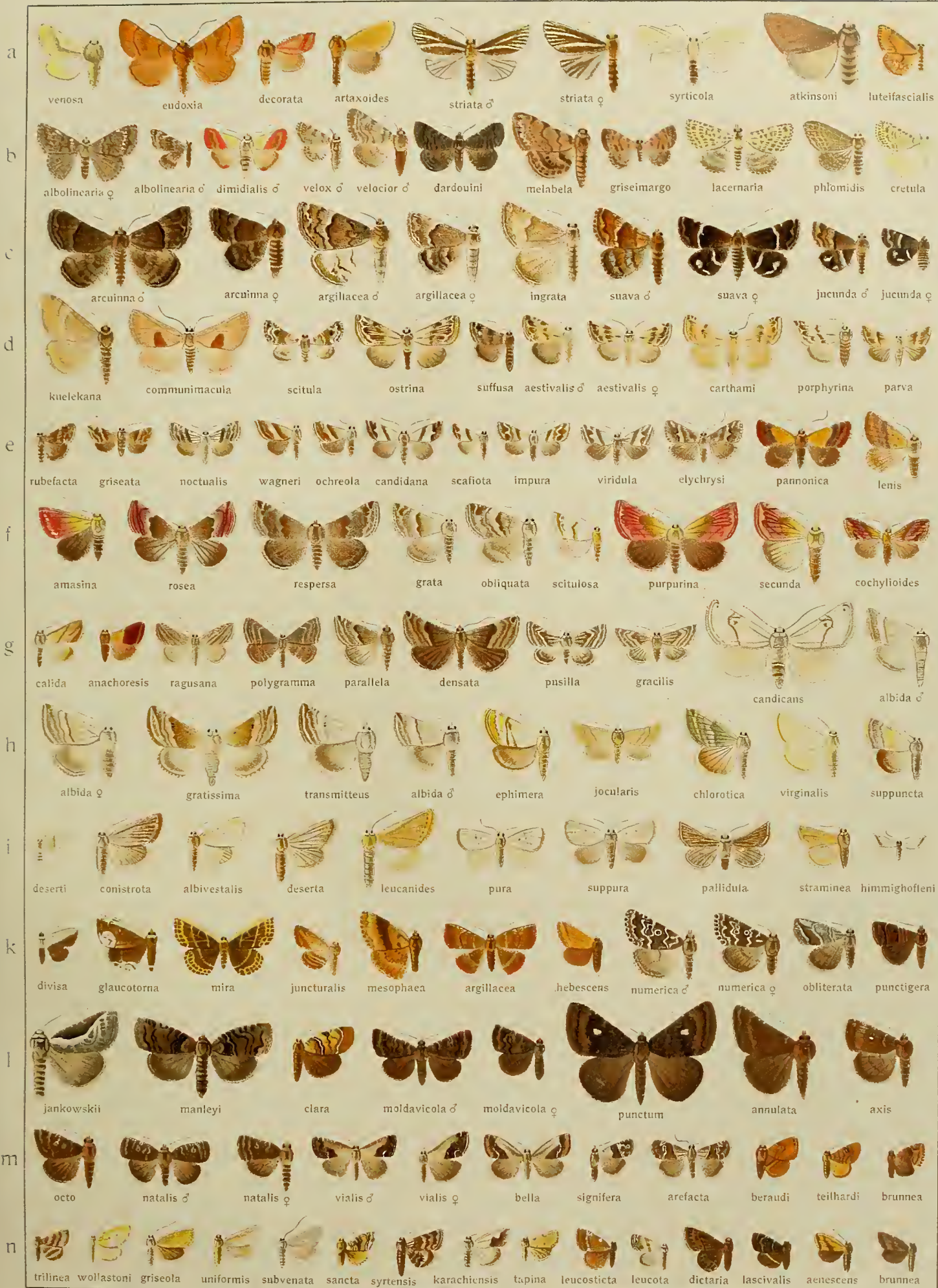


Pars I. Fauna palæarctica 3.

ANARTOMORPHA - CLADOCEROTIS



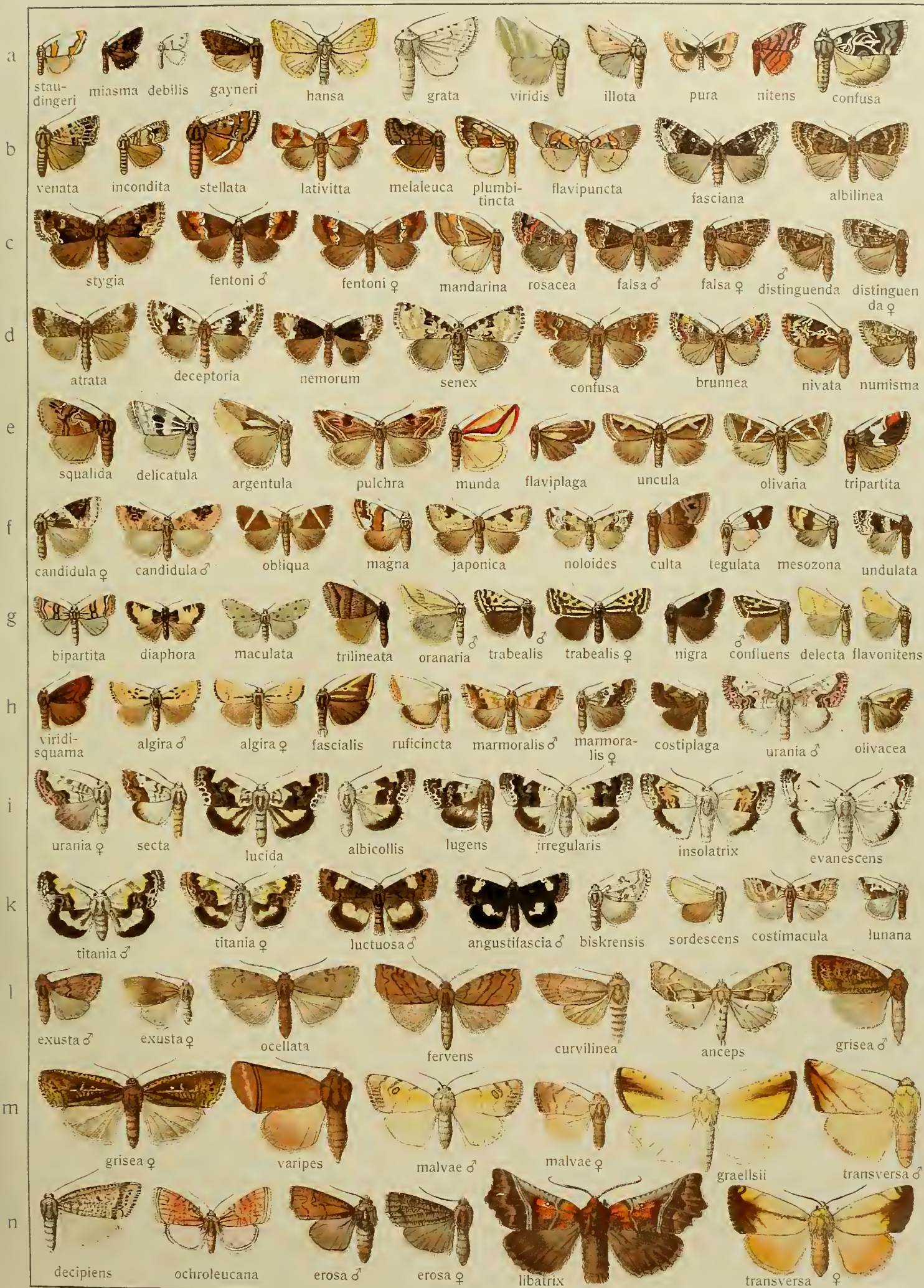
Pars I. Fauna palaeartica 3.



Pars I. Fauna palaeartica 3.

XANTHOLEUCA - ACONTIA

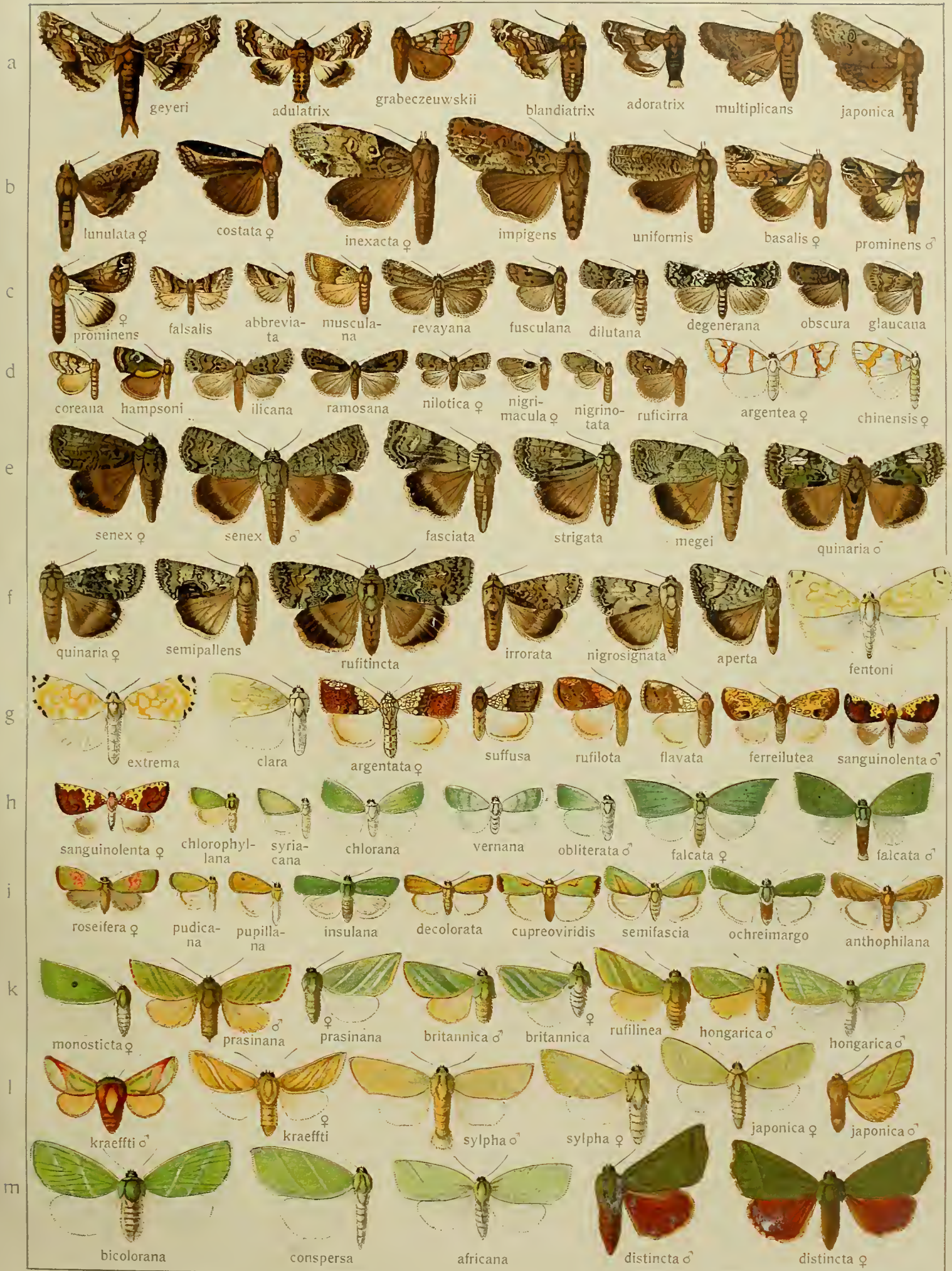
III



EUTELIA-CLETHROPHORA

iii

53



Pars I. Fauna palaeartica 3.

MORMONIA-CATOCALA



Pars I. Fauna parlaearctica 3.

CATOCALA



CATOCALA - EPHESIA



EPHESIA

III



Pars I. Fauna parlaearctica 3.

CATOCALA - PATULA



NYCTIPAO - SPEIREDONIA

III



Pars I. Fauna palaeartica 3.

SPEIREDONIA - ANUA





Pars I. Fauna palaeartica 3.

ANISONEURA - GONOSPILEIA



Pars I. Fauna palaeartica 3.

CORTYTA - PHYTOMETRA



Pars I. Fauna palaearctica 3.

CALOPLUSIA - PHYTOMETRA



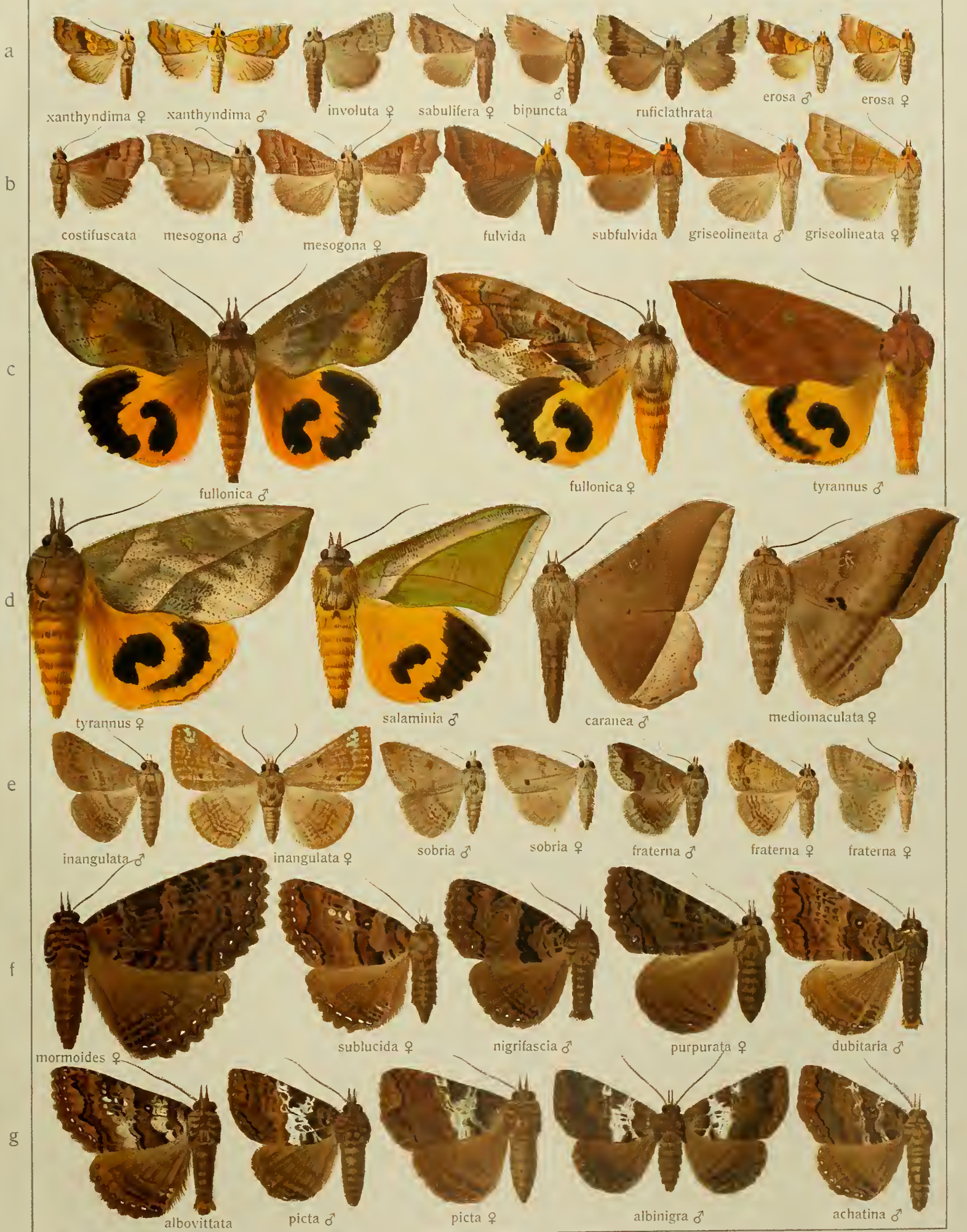
Pars I. Fauna palaeartica 3.

PHYTOMETRA - ABROSTOLA



Pars I. Fauna palaeartica 3.

COSMOPHILA-SYPNA



Pars I. Fauna palaeartica 3.



Pars I. Fauna palaeartica 3.

APOPESTES-CAPNODES

III



Pars I. Fauna palaeartica 3.

CHRYSORITHRUS - ORAESIA



Pars I. Fauna palaeartica 3.



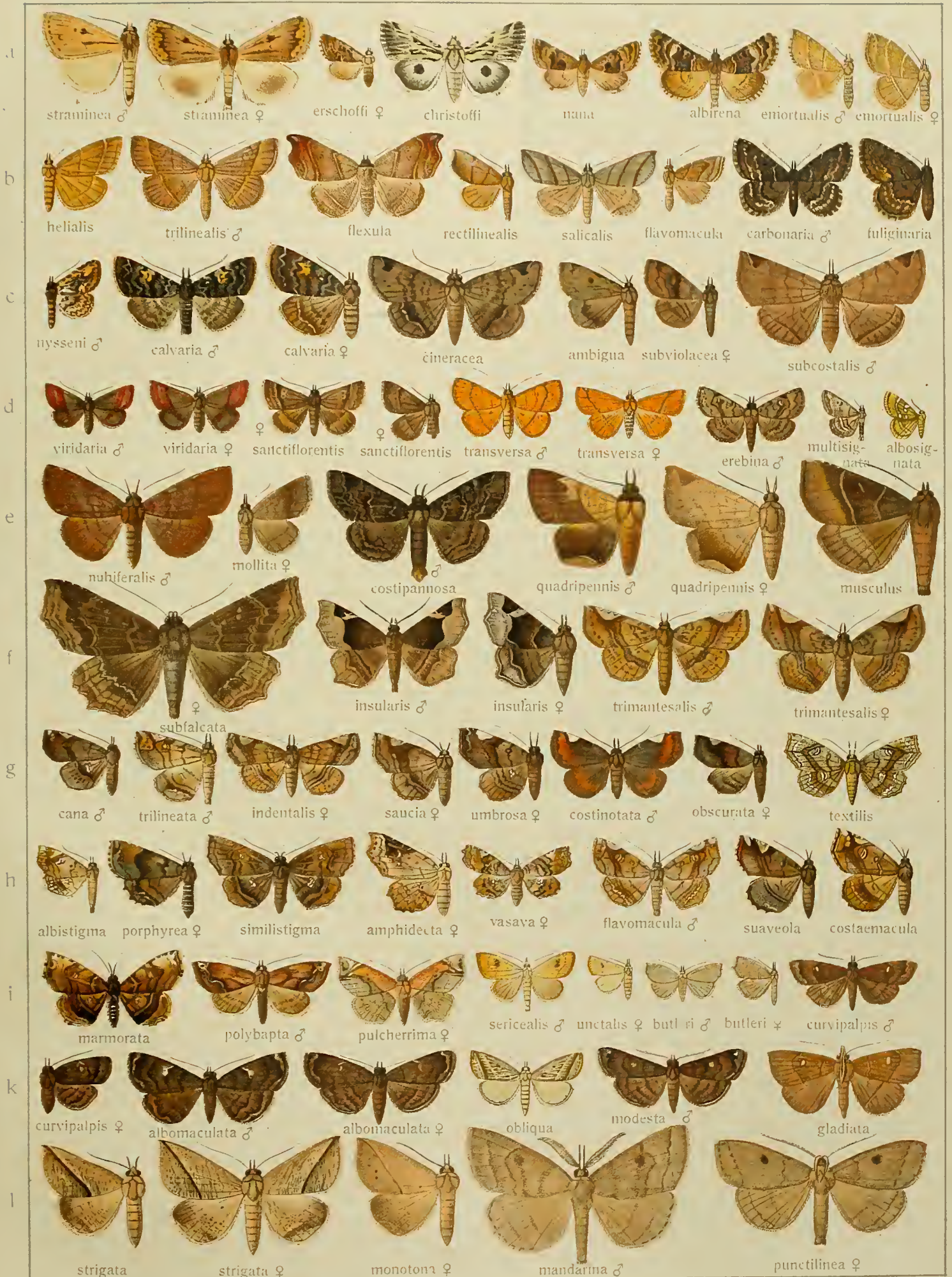
Pars I. Fauna palaearctica 3.

Wagner, J. W. Müller, Frankfurt a. M., ad. nat. re. J.

EREMONOMA - PSEUDAGLOSSA

III

71



MEGALOCTENA - RHYNCHINA



Pars I. Fauna paieaictica 3.

RHYNCHINA-HYPENA

III

3



HYPENA - BLEPTINA



BLEPTINA-ADRAPSA_Suppl.



DO NOT CIRCULATE

