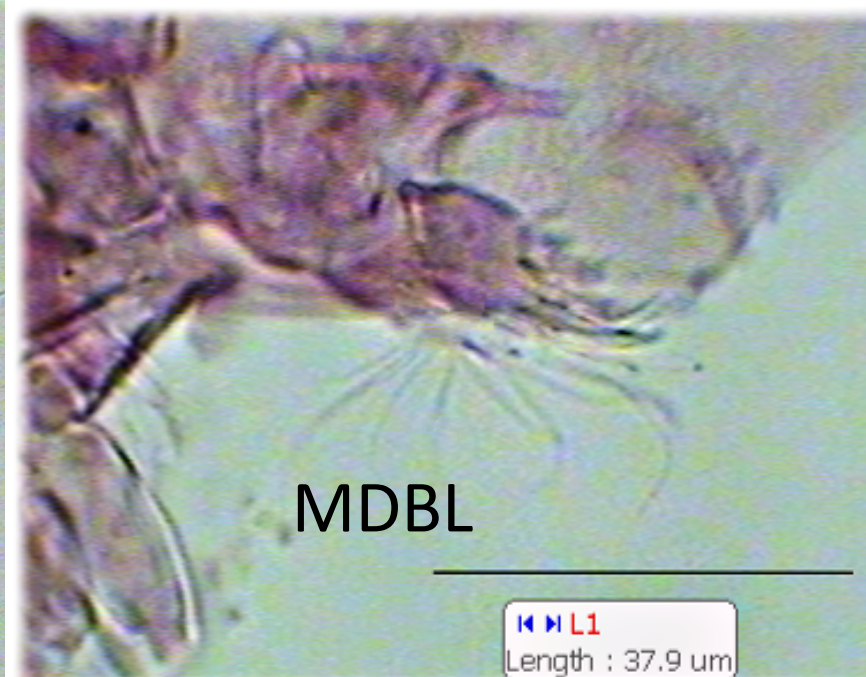
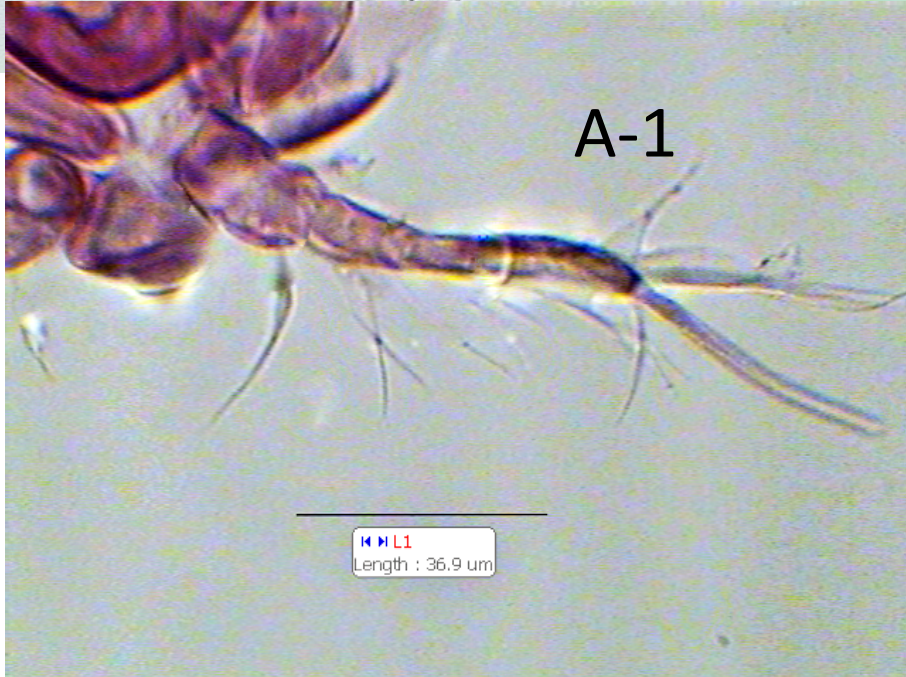
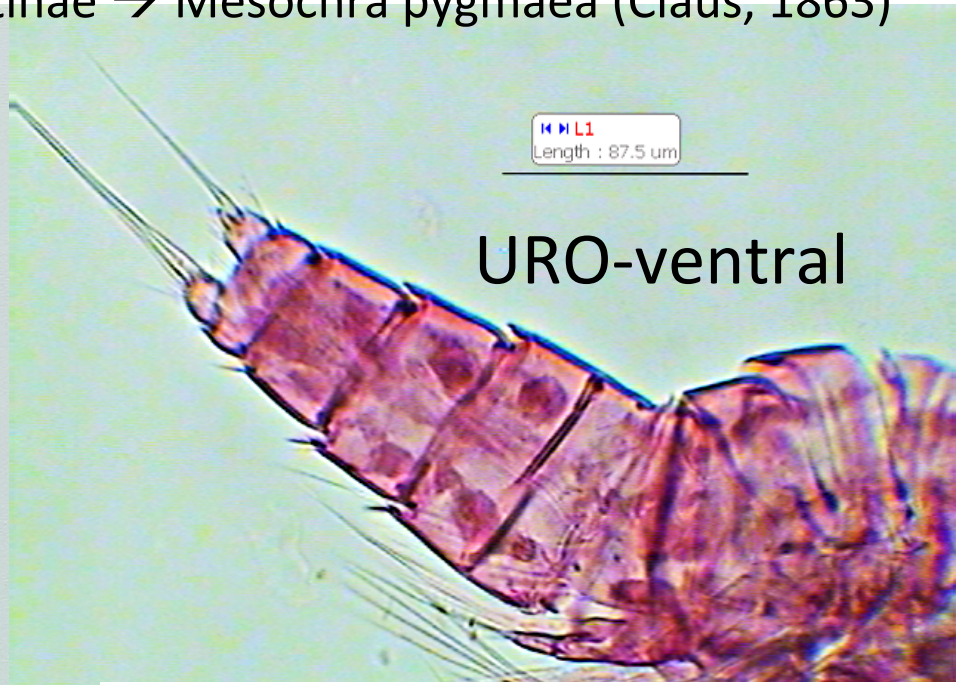
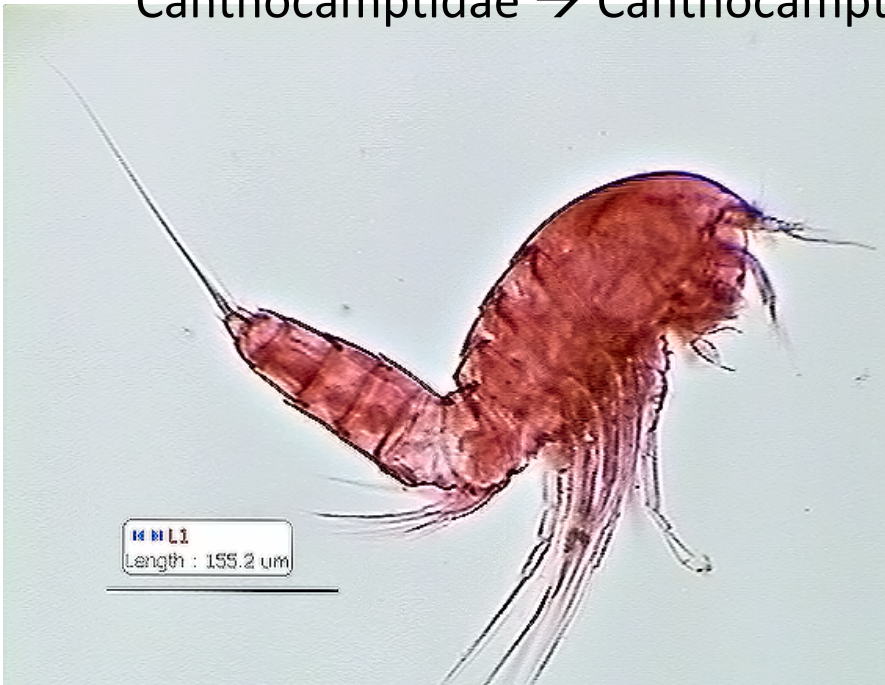


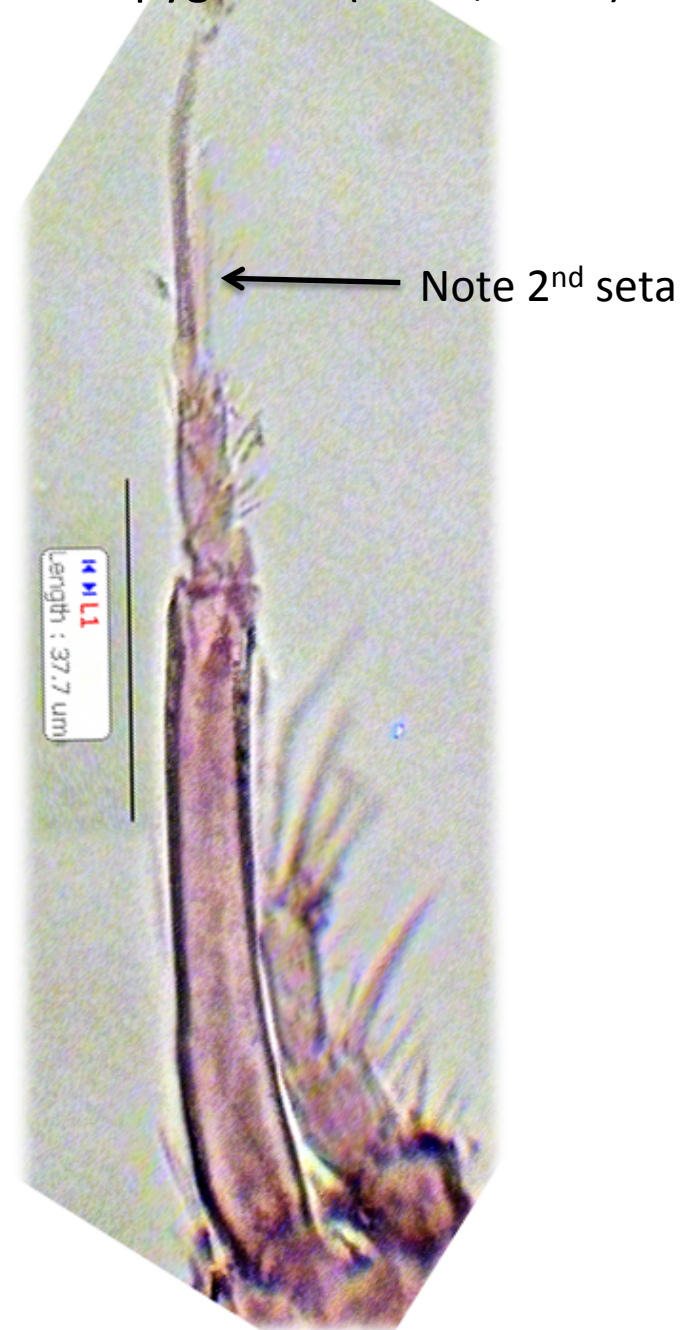
Canthocamptidae → Canthocamptinae → *Mesochra pygmaea* (Claus, 1863)



Canthocamptidae → Canthocamptinae → *Mesochra pygmaea* (Claus, 1863)

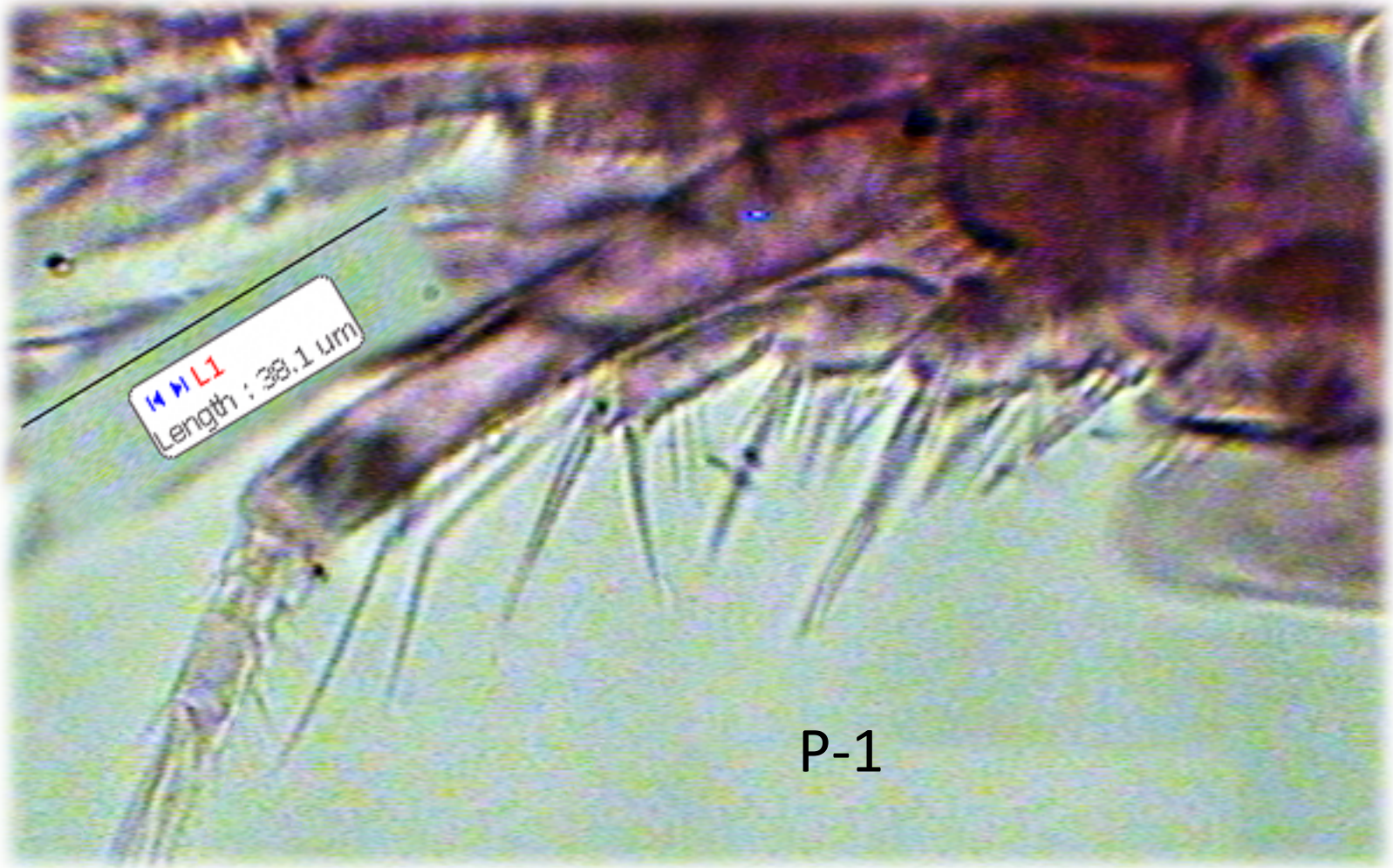


P-1



Note 2<sup>nd</sup> seta

Canthocamptidae → Canthocamptinae → *Mesochra pygmaea* (Claus, 1863)



Canthocamptidae → Canthocamptinae → *Mesochra pygmaea* (Claus, 1863)

P-2

Length : 34.2 um

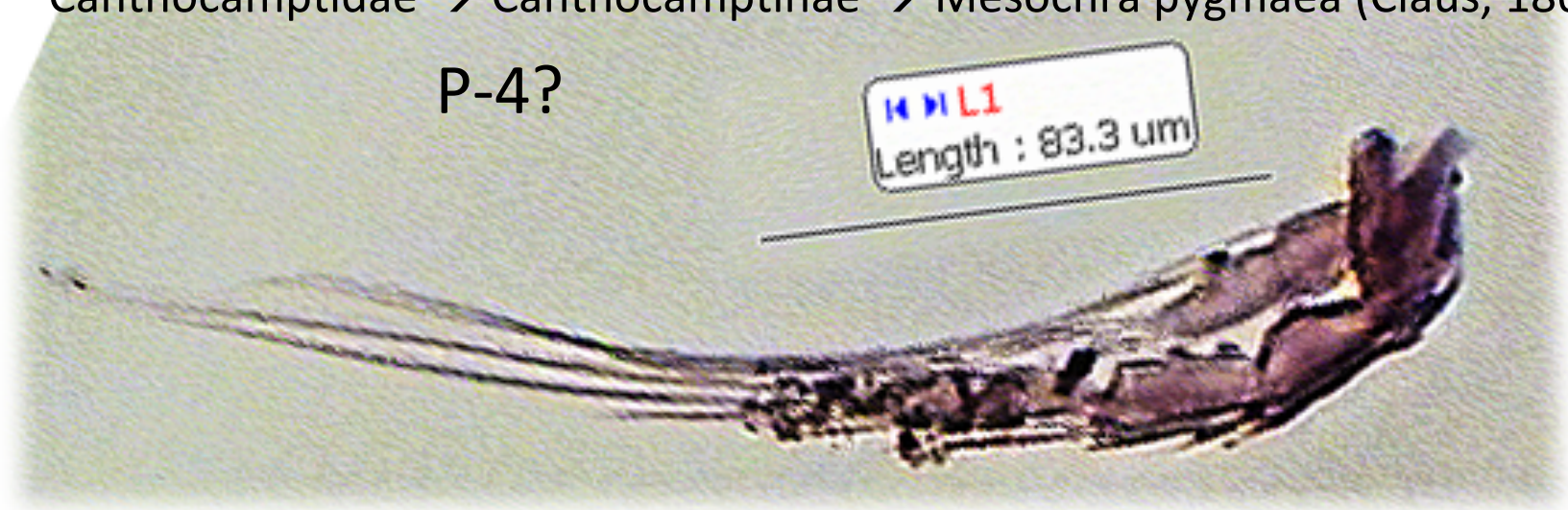
P-3

Length : 33.5 um

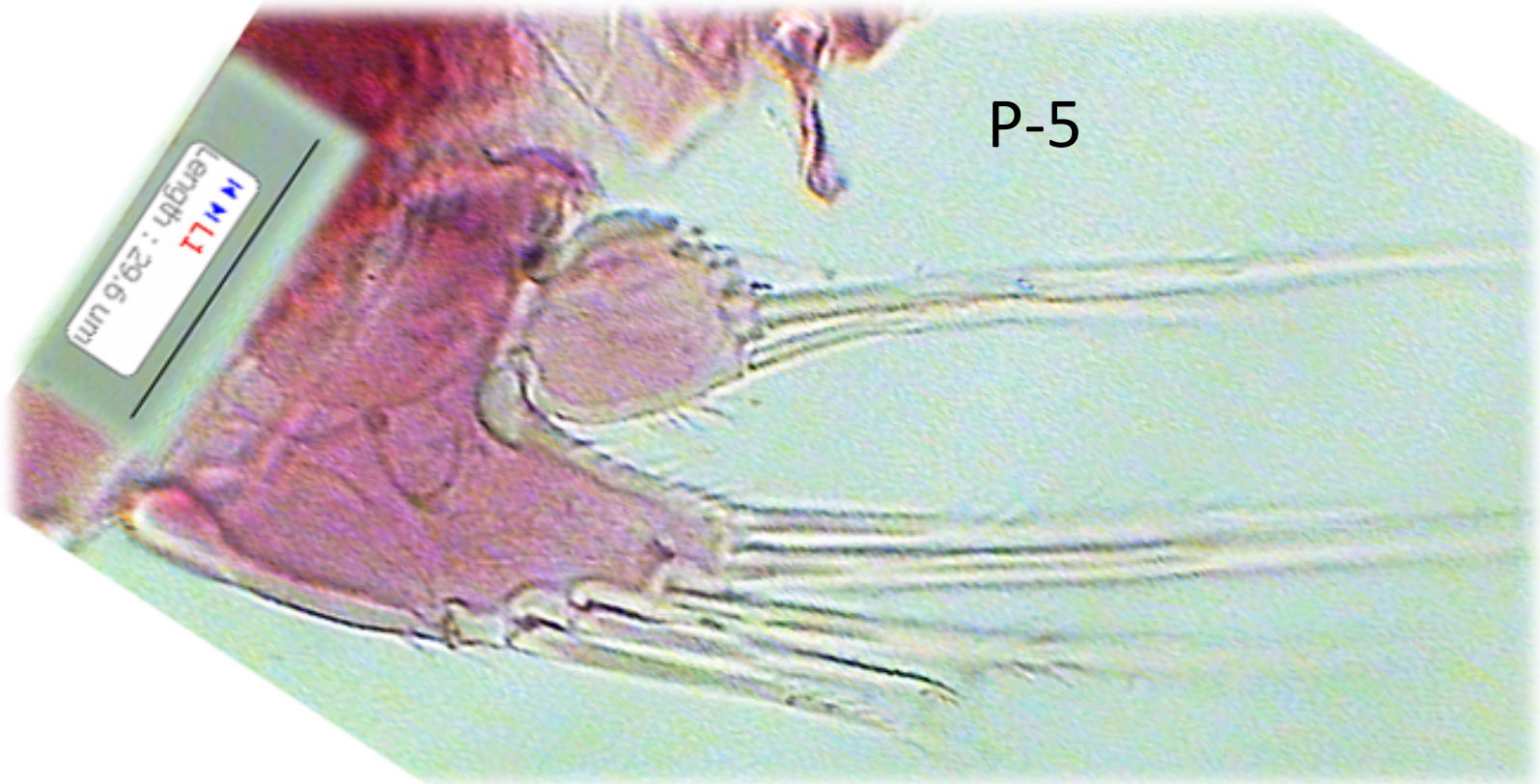


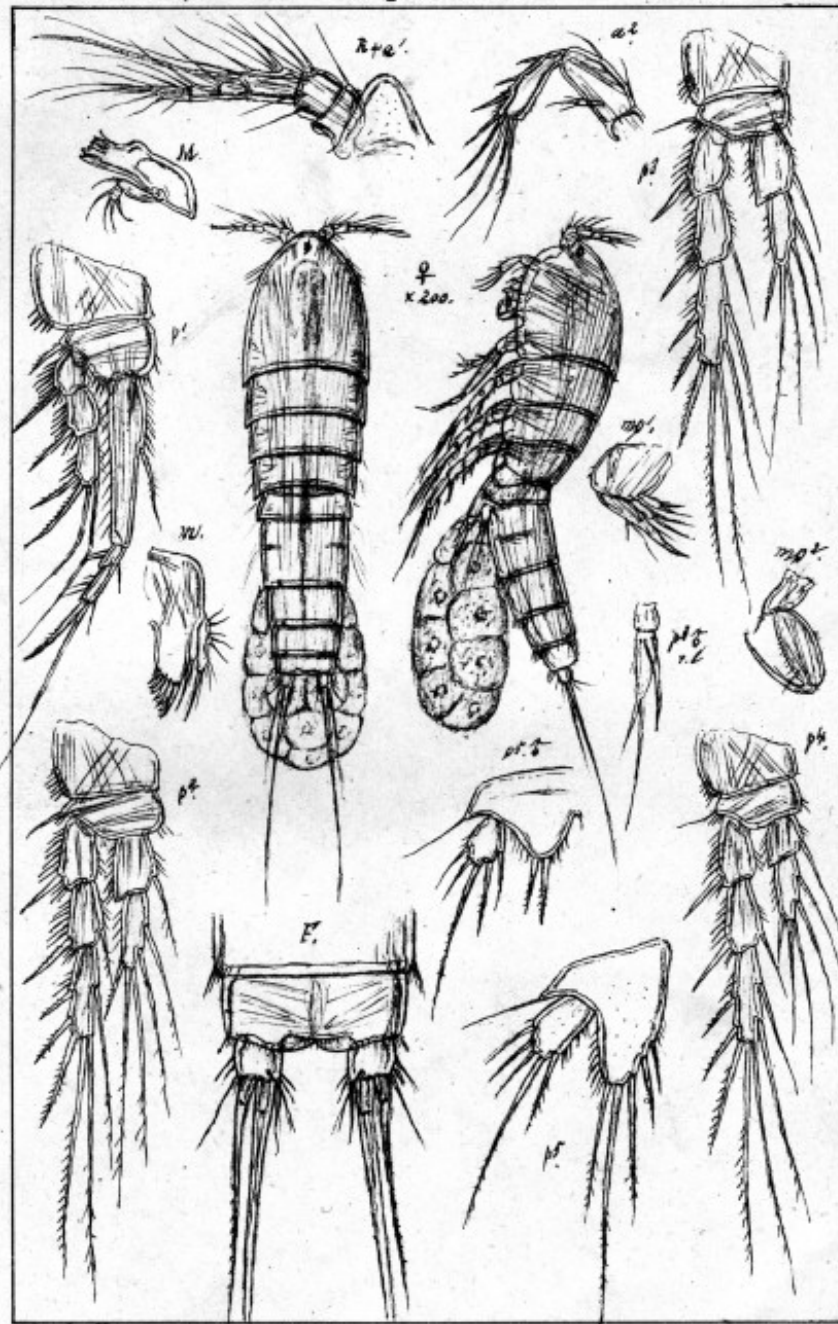
Canthocamptidae → Canthocamptinae → *Mesochra pygmaea* (Claus, 1863)

P-4?



P-5





### Comments on the species:

*M. pygmaea* is very small, probably the main reason it was found in the Zostera wash water. It also has a world-wide distribution suggesting increased tolerance to environmental variables.

Figure from Sars, 1907  
(CC-BY license)