

Evolution of single and binary stars in gravitational N-body simulations

ARI Colloquium

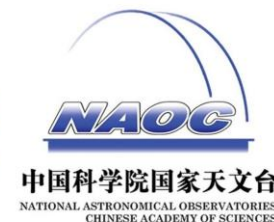
06.05.2021

Albrecht Kamlah (ARI-ZAH)

PhD candidate under the
supervision of Rainer Spurzem

Collaborators so far

- **Initialisation of star cluster simulations:** Abbas Askar, Mirek Giersz, Peter Berczik, Agostino Leveque, Rainer Spurzem, Wang Long, Shu Qi, Bhusan Kayastha
- **Direct N-body simulations and high performance computing:** Rainer Spurzem, Peter Berczik, Bhusan Kayastha, Shu Qi, Manuel Arca Sedda
- **Monte-Carlo models of star clusters:** Mirek Giersz, Arkadiusz Hypki, Abbas Askar, Agostino Leveque
- **Stellar evolution:** Jarrod Hurley, Sambaran Banerjee, Mirek Giersz, Rainer Spurzem, Diogo Belloni, Lars Kühlmichel, Peter Berczik, Manuel Arca Sedda
- **Population synthesis vs. N-body simulation:** Li Zhongmu, Bhusan Kayastha, Rainer Spurzem, Peter Berczik, Deng Yangyang
- **Observations of star clusters:** Benjamin Giesers, Stefan Dreizler, Pang Xiaoying
- **Planetary systems in star clusters:** Katja Reichert, Rainer Spurzem



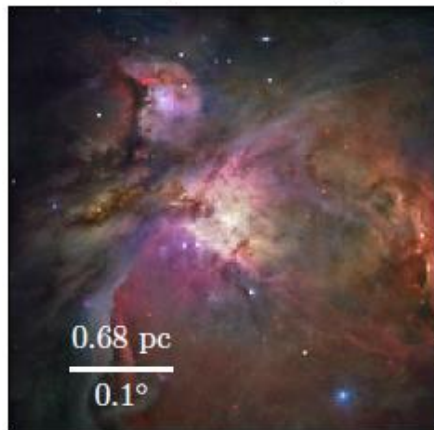
the SILK ROAD PROJECT at NAOC.
丝绸之路计划

Topics today

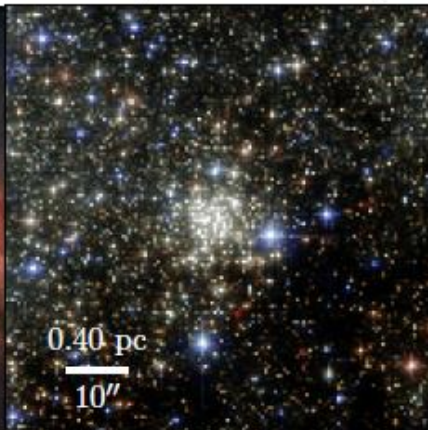
- Some general comments on star clusters
- Star cluster simulations
- Current stellar evolution in star cluster simulations
- Future additions in the stellar evolution of star cluster simulations

Star clusters

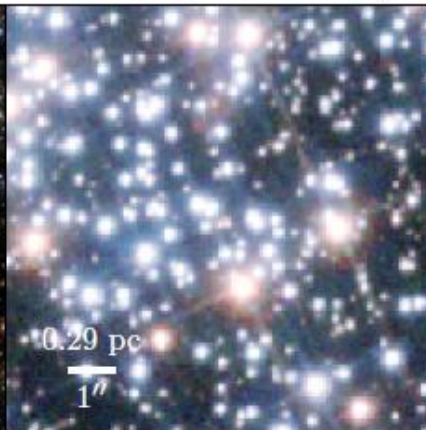
ONC, $T < 3$ Myr



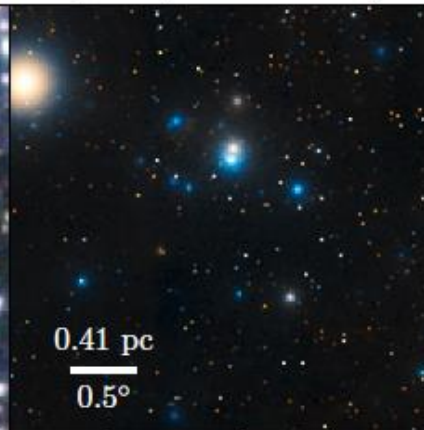
Arches, $T \approx 2 - 3$ Myr



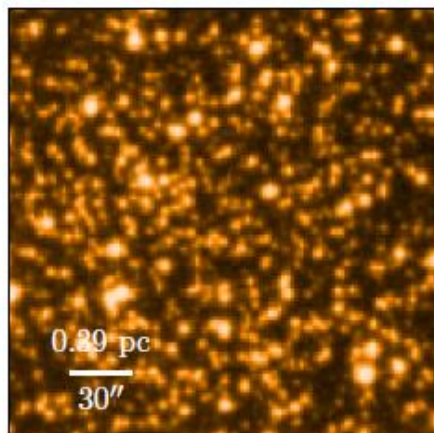
NGC 265, $T \approx 250$ Myr



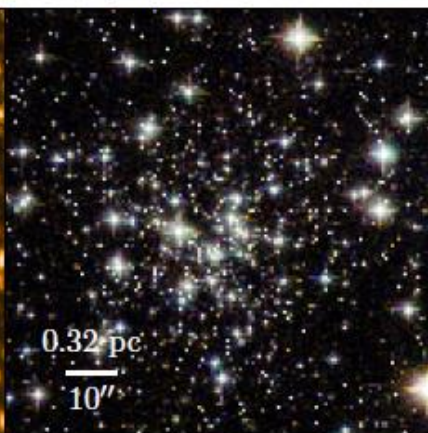
Hyades, $T \approx 625$ Myr



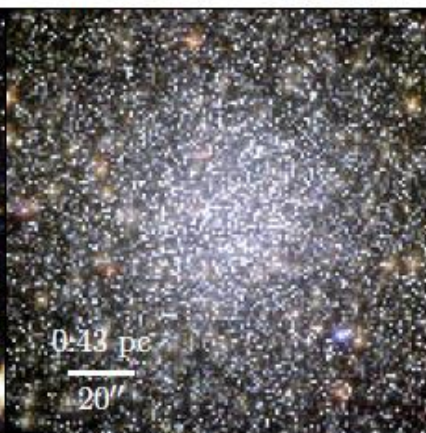
Coll 261, $T \approx 7$ Gyr



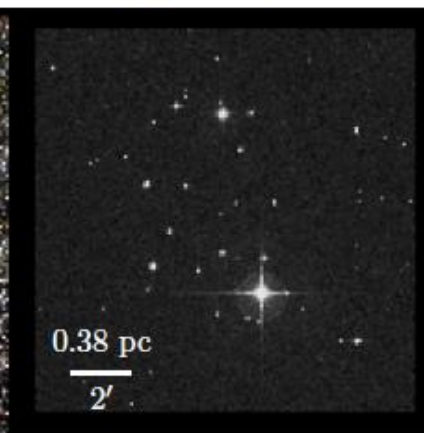
NGC 6535, $T > 10$ Gyr



47 Tuc, $T > 10$ Gyr



NGC 1252: Fake News



- Star clusters exist on a huge range of mass, size and density scale.
- Cluster formation is central to star formation; almost all stars form in groups or some kind of hierarchies.
- Gaia and massive spectroscopic survey such as MUSE → kinematics and abundance data now accurate enough to trace back field stars to their birth place → resolve structures of star formation.

Figure from Krumholz et al. 2019; see also Kruijssen 2014, Baumgardt & Hilker 2018, Bianchini et al. 2018

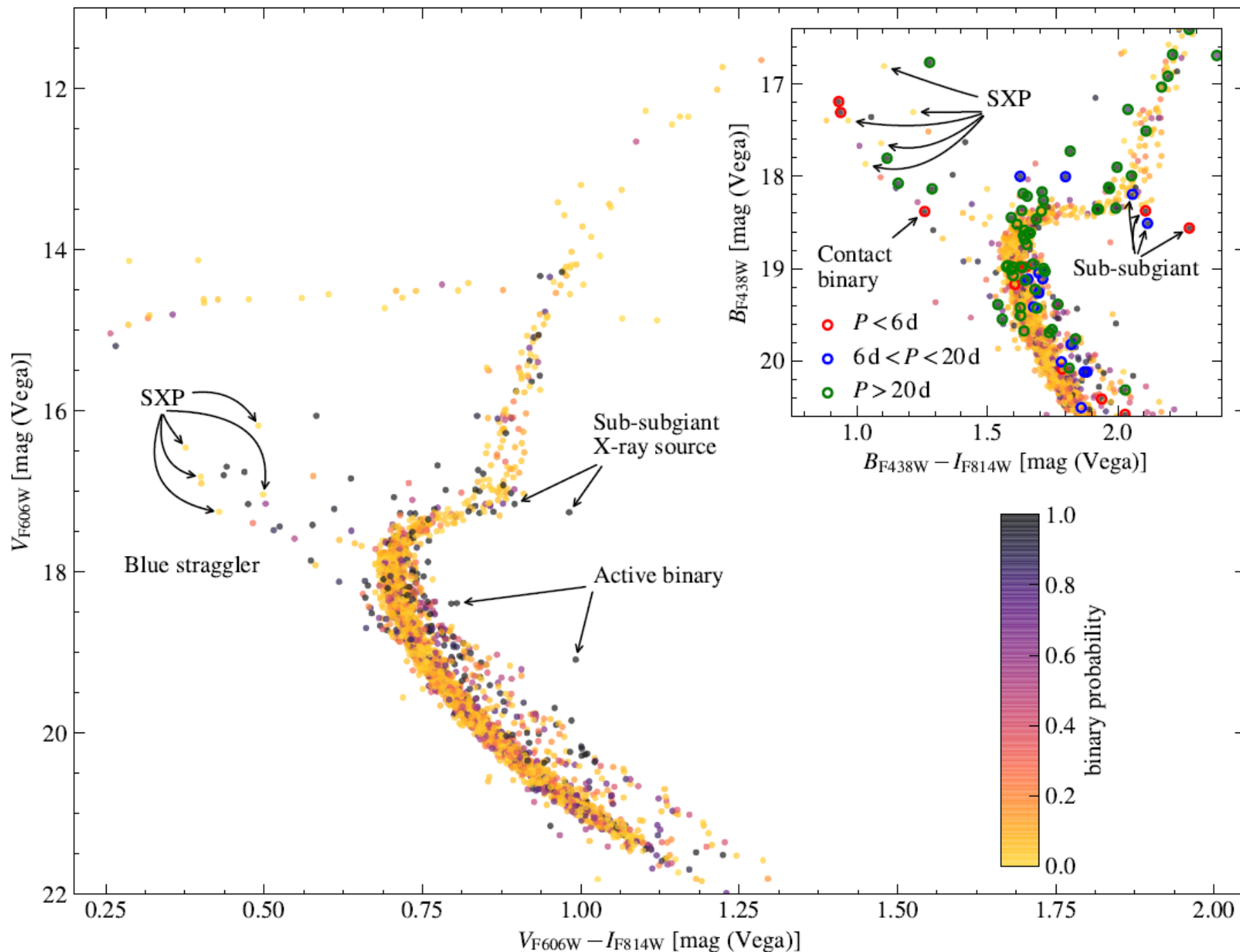
Globular clusters: NGC 3201



- Globular clusters (GCs) are extremely old → fossil remnants of early galaxy formation
- Milky Way hosts over 150 of these
- GCs are extremely dense
- Host hierarchical stellar systems, especially in their cores that act as a kind of heat source → delay core-collapse

NGC 3201 (Orion Optics UK AG12Orion telescope):
<http://www.astro-austral.cl/imagenes/starclusters/ngc%203201/info.htm>

NGC 3201



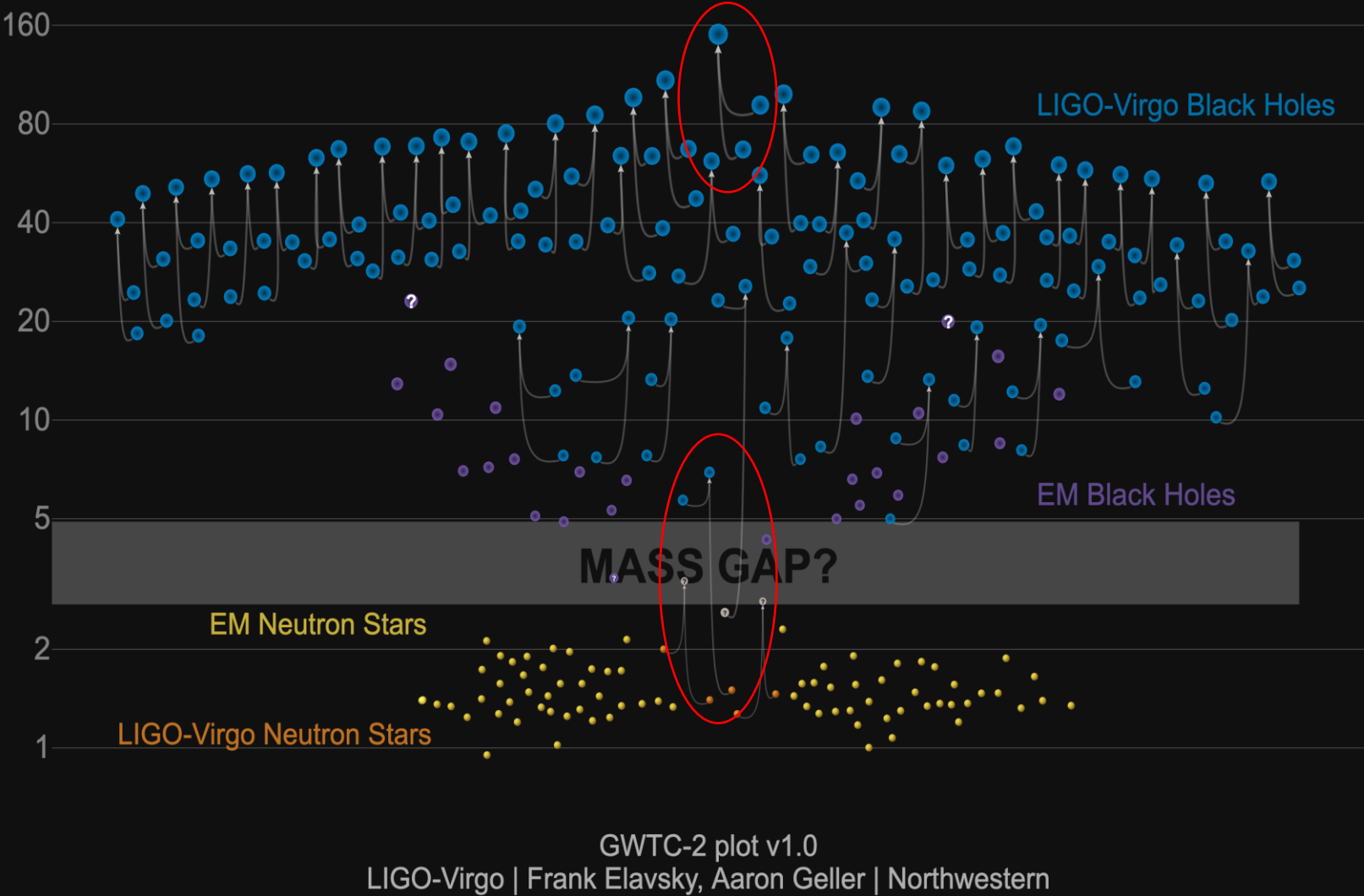
- Very old and metal-poor GC
- Mass of around $1.49 \times 10^5 M^*$
- Negligibly rotating today (Bianchini et al. 2018) \rightarrow initially rotating much faster?
- Large half mass radius of 6.20 pc \rightarrow BH subsystem / hard binary subsystem that counters core-collapse?
- Three stellar mass BH binaries found in MUSE data (Giesers et al. 2018, 2019)
- Giesers et al. Also use MOCCA models to cross-check binary fractions

\rightarrow DRAGON-II NGC 3201 simulation running!

Figure: Giesers et al. 2019; HST survey: Nardiello et al. 2018; Piotto et al. 2015; See also Askar et al. 2018; Kremer et al. 2018 Giesers et al. 2018, Price-Whelan et al. 2018

Masses in the Stellar Graveyard

in Solar Masses



Gravitational wave detections

- Dense stellar systems like globular clusters (GCs) are considered to provide conducive environments to form GW progenitors via few-body dynamical interactions (e.g. Downing et al. 2010, Tanikawa 2013, Rodriguez et al. 2016a,b, Arca Sedda & Gualandris 2018, Hong et al. 2020, Wang et al. 2021)
- Closest LIGO/VIRGO detection 40 ± 10 Mpc (NS-NS merger and first detection; Abbott et al. 2017)
- Low significance detection of elusive BH-NS merger (Abbot et al. 2015; see also Arca Sedda 2020, Chattopadhyay et al. 2020b)
- IMBH ($>100 M^*$) detection of mass $142^{+28}_{-16} M^*$ in 2020 (Abbott et al. 2020)

Star cluster simulations: modelling methods

- Two main methods that stand out today after decades of developing and testing them (e.g. Spurzem 1999)

Direct N-body methods

- Orbit integration of the orbits of many particles in a self-gravitating bound star cluster.

→ **Nbody6++GPU** (Spurzem 1999, Nitadori & Aarseth 2012, Wang et al. 2015)

- Currently still best available high accuracy direct N-body simulation code.

Monte-Carlo methods

- Fokker-Planck equation solved by Monte Carlo Markoff chain method (Hénon 1971; Stodolkiewicz 1982, 1986; Giersz 1998; Giersz et al. 2015; Askar et al. 2017; Kremer et al. 2020)

→ **MOCCA** (Fregeau et al. 2004, Hypki & Giersz 2013, Giersz et al. 2013, 2015, Askar 2017, Hong et al. 2020)

- Much faster (only days) than Nbody6++GPU **BUT** (Giersz et al. 2013b) MOCCA has some shortcomings and cannot model
 - Higher-order multiples
 - Rotation
 - Tidal shocks, complex tides

MOCCA models (MOCCA Survey Database I: Askar et al. 2017) used to find initial conditions of Nbody6++GPU simulations for realistic star clusters (Kamlah et al. 2021) → DRAGON-II of NGC3201

GPU supercomputers

- Need the world's fastest computers to run our simulations → GPU high performance computing (HPC) clusters.
- **DRAGON-II simulations (starting with NGC 3201) already running for four months on JUWELS** (using PeTar by Wang et al. 2020a, 2020b; then switch to Nbody6++GPU later; MOCCA simulations also work in progress).
- Also in use are Kepler at ARI-ZAH, binAC at Tübingen, silk nodes at NAOC-CAS, chuck in Poland,...



Some research questions that star cluster simulations are expected to answer nowadays

- What are formation channels of IMBHs and what initial conditions produce multi-generation BH growth? (Giersz et al. 2015, Arca Sedda et al. 2019, di Carlo et al. 2020, Rizzuto et al. 2021, Banerjee 2021)
- What are the formation channels and what is the long-term evolution of blue stragglers, X-ray binaries, cataclysmic variables (CVs) and other special photometric binary stars in dense star cluster environments? (Rappaport et al. 1982, Knigge 2006, Schreiber et al. 2010, Knigge 2011, Zorotovic et al. 2016, Belloni et al. 2018, Breivik et al. 2020)
- What is the effect of multiple populations and initial bulk rotation on the dynamics and stellar content of the star cluster? (theory: Einsel & Spurzem 1999, Fiestas, Spurzem & Kim 2006, Hong et al. 2013; observations: Kamann et al. 2018, 2020, Bianchini et al. 2018, Lahén et al. 2020, Ballone et al. 2021)
- Can we populate the first compact object mass gap between $(2-5)M^*$ in star cluster simulations with BH-NS or NS-NS binary mergers? (Arca Sedda 2020, Chattopadhyay et al. 2020a,b, Drozda et al. 2020)

Preceding, groundbreaking simulations with Nbody6++GPU and MOCCA

- DRAGON-I simulations of globular clusters (GC) (Wang et al. 2015, 2016, Shu et al. 2021)
- MOCCA Survey Database I of 2000 GC models (Askar et al. 2017, Morawski et al. 2018)
- Nuclear star cluster harbouring a central accreting SMBH (Panamarev et al. 2019)
- IMBH growth studies (Giersz et al. 2015, Arca Sedda et al. 2019, di Carlo et al. 2020, Rizzuto et al. 2021)

Stellar evolution largely outdated (not standard today compared with other SSE/BSE variants, e.g. CMC/COSMIC (Breivik et al. 2020), MSE (Hamers et al. 2020), MOBSE2 (Giacobbo et al. 2018),.....) in above simulations → **Need new simulations with new stellar evolution**

Current simulations (still running) with updated SSE/BSE:

- New MOCCA Survey Database II (chuck; Giersz et al.)
- DRAGON-II IMBH studies (JUWELS, binAC; Arca Sedda et al.)
- DRAGON-II of NGC 3201 (JUWELS; Spurzem et al.)

Single Stellar Evolution (SSE) & Binary Stellar Evolution (BSE)

- Among the most influential astrophysics codes ever written.
- Implemented in (for example):
 - Star cluster initialisation:
 - **McLuster** (Kuepper et al. 2011, Kamlah et al. 2021, Leveque et al. 2021)
 - Population synthesis:
 - COMPAS (Stevenson et al. 2017)
 - MOBSE2 (Giacobbo et al. 2018)
 - COSMIC2.0 (Breivik et al. 2020)
 - Monte-Carlo methods for N-body problems:
 - **MOCCA** (Fregeau et al. 2004, Hypki & Giersz 2013, Giersz et al. 2013, 2015, Askar 2017, Hong et al. 2020)
 - CMC (Joshi et al. 2000, 2001. Fregeau & Rasio 2007, Kremer et al. 2018, 2019, 2020)
 - Direct N-body simulations:
 - Nbody7 (Banerjee et al. 2019, Banerjee & Belczynski 2020, Banerjee 2021)
 - **Nbody6++GPU** (Spurzem 1999, Nitadori & Aarseth 2012, Wang et al. 2015)
 - PeTar (Wang et al. 2020a, b)

BSE & SSE

- **SSE** (Hurley et al. 2000)
Comprehensive analytical formulae of stellar mass & metallicity → give luminosity, stellar radii, core mass dependent on age, stellar mass & metallicity.
- **BSE** (Hurley et al. 2002)
Tidal interaction between stars → circularization & stellar spin synchronization → inspiral and merger of binaries. RLOF, CE evolution integrated.

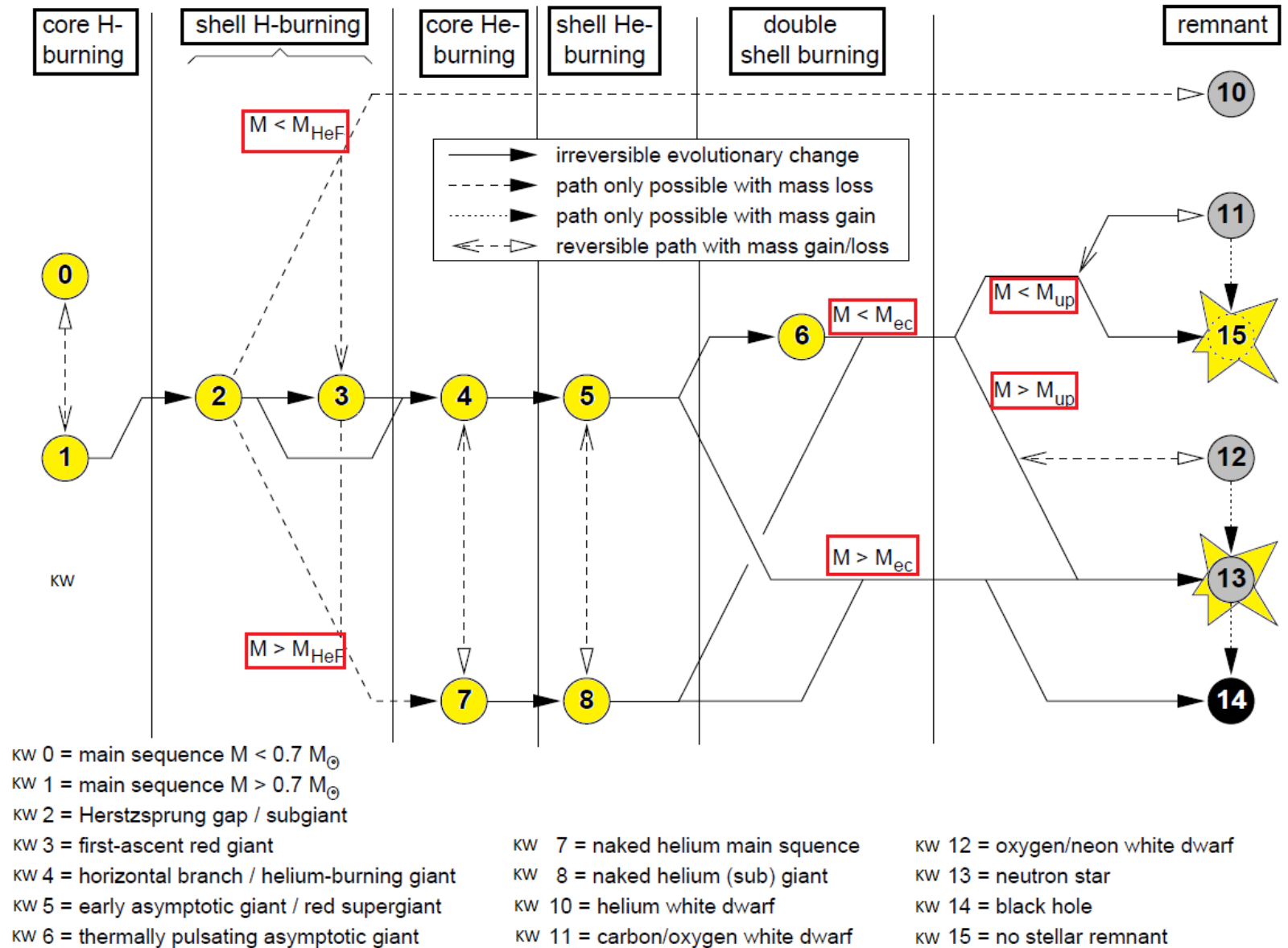


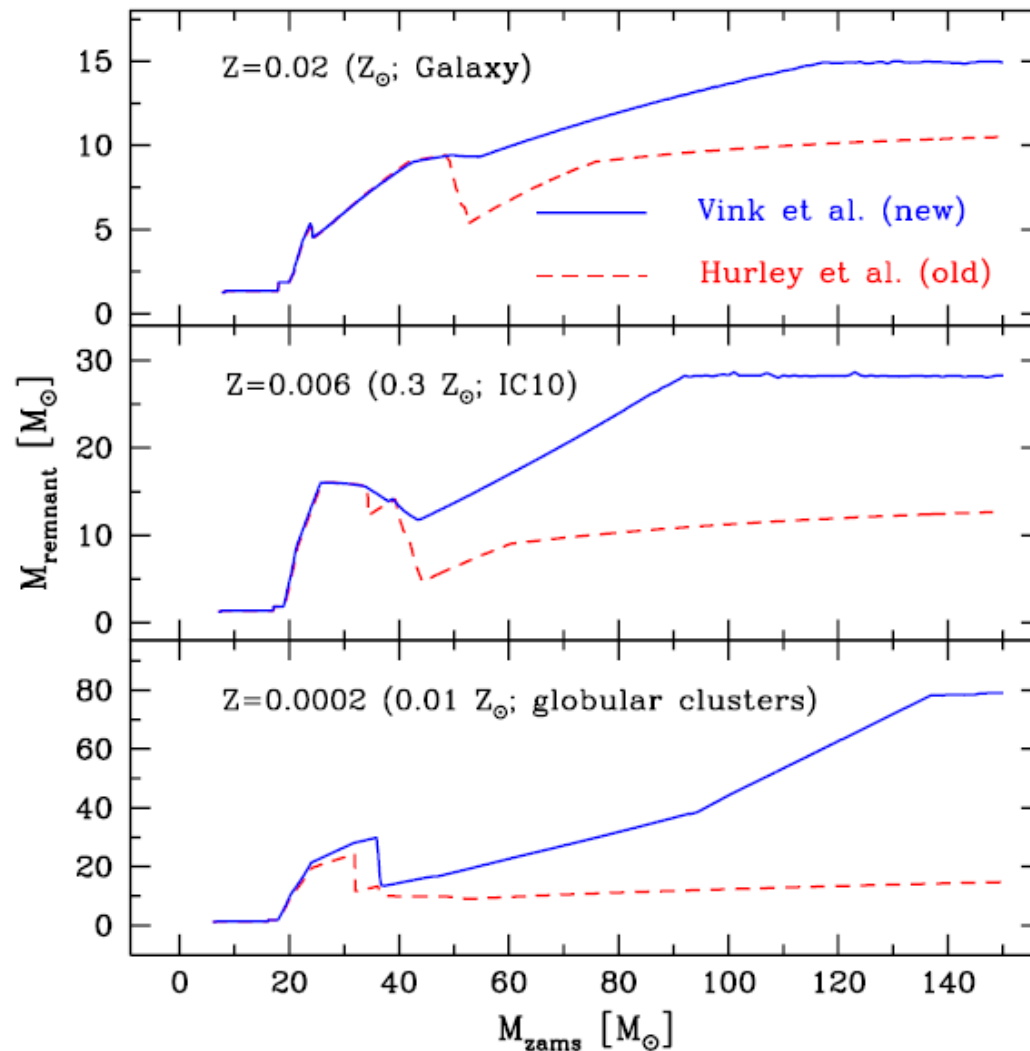
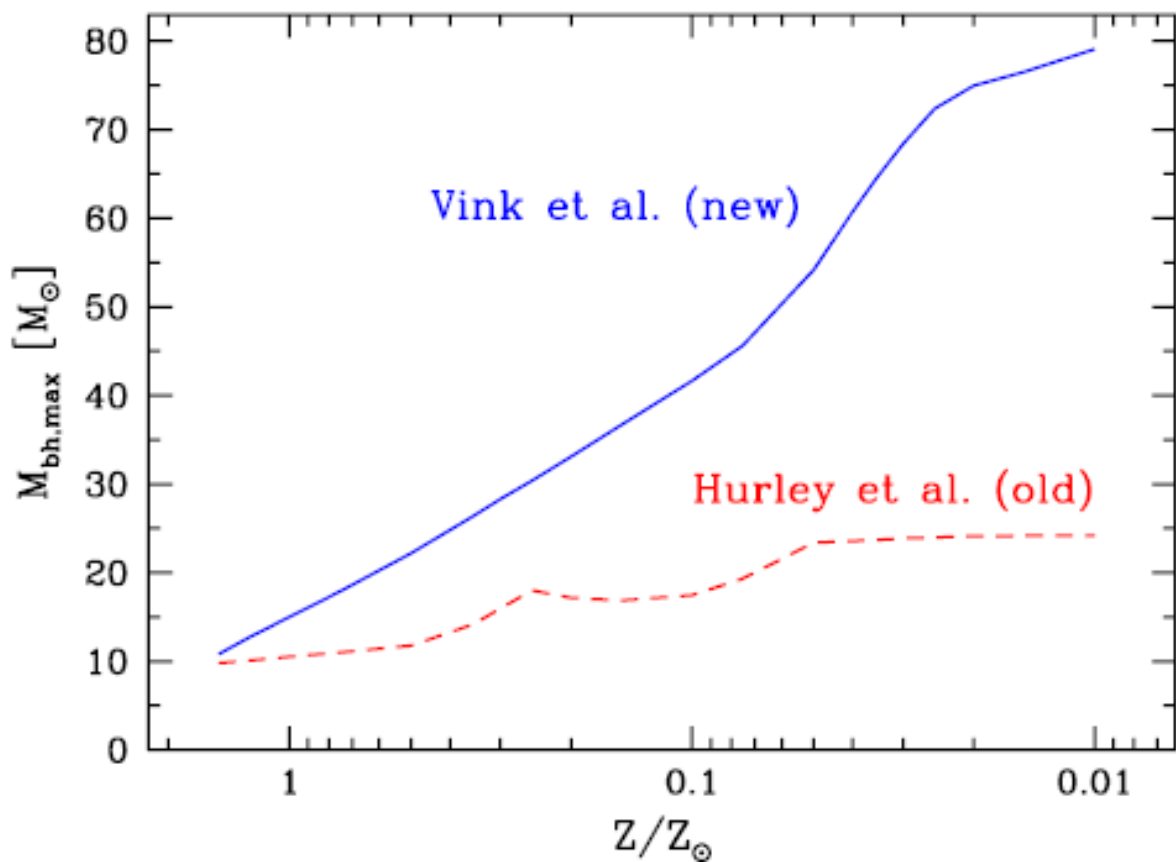
Figure from Hurley et al. (2000); Hurley et al. (2002)

Completed SSE/BSE updates

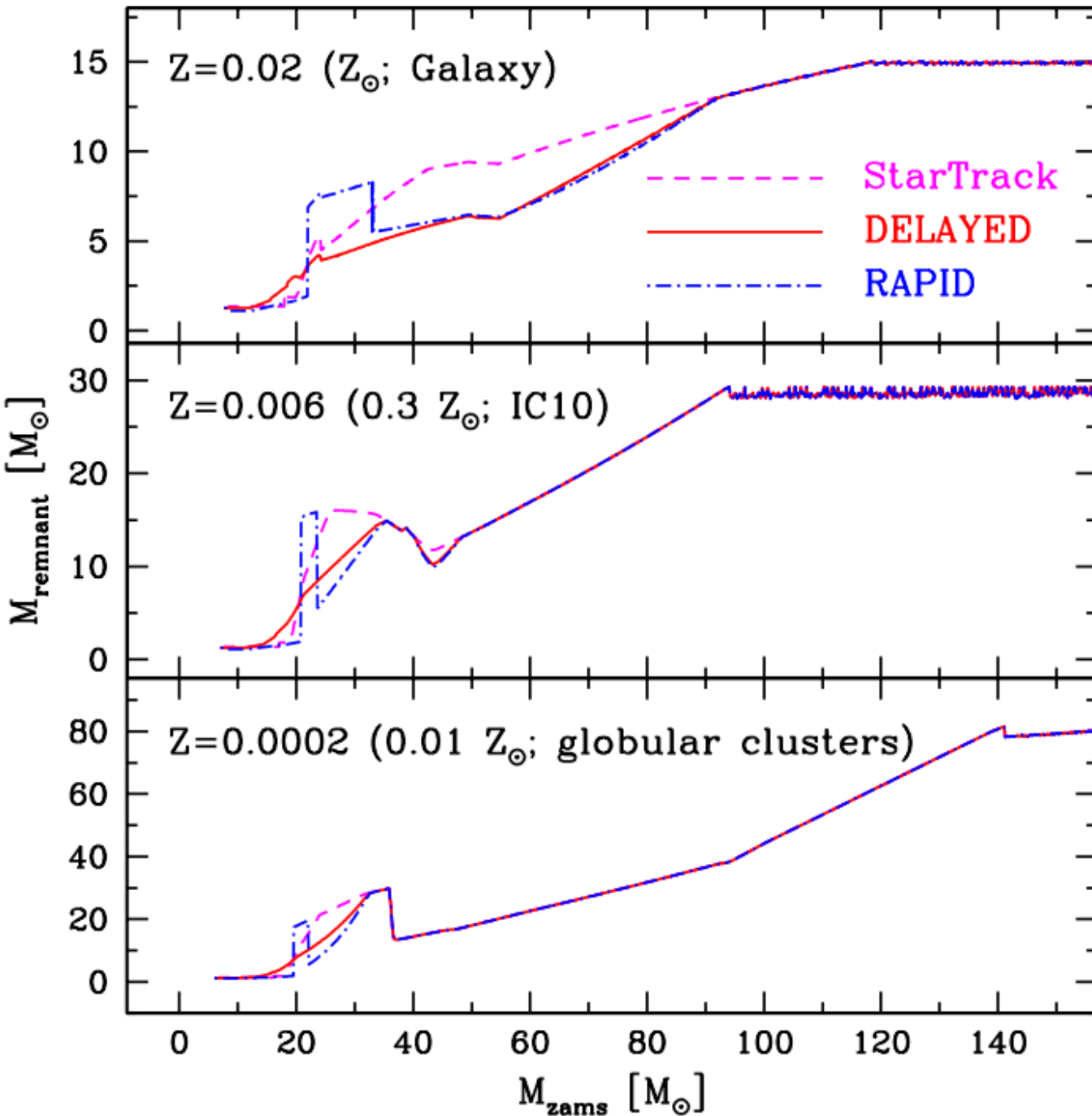
Our **current** (Level C; Kamlah et al. 2021) code versions of **Nbody6++GPU** and **MOCCA** are able to model (on top of Hurley et al. 2000, 2002):

- **Metallicity dependent stellar wind mass loss** (Vink et al. 2001, Vink & de Koter 2005, Belczynski et al. 2010)
- **Rapid and delayed core-collapse SNe** (Fryer et al. 2012)
- **ECSNe (EIC, AIC, MIC)** (Nomoto & Saio 1985, Ivanova 2008, Leung et al. 2020)
- **(P)PISNe** (Belczynski et al. 2016, Spera & Mapelli 2017, Woosley 2017, Leung et al. 2019, Banerjee et al. 2020, Kremer et al. 2020)
- **Fallback-scaled natal kicks** (Scheck et al. 2004, Fryer & Young 2007; Scheck et al. 2008, Banerjee et al. 2020, Banerjee 2021)
- **BH natal spins:**
 - **Fuller** (Fuller & Ma 2019, Banerjee 2021)
 - **Geneva** (Eggenberger et al. 2008, Ekström et al. 2012, Banerjee 2021)
 - **MESA** (Spruit 2002, Paxton et al. 2011, 2015, Fuller & Ma 2019, Banerjee 2021)

Stellar winds



Remnant masses – core-collapse SNe



- Rapid vs. Delayed SNe as extremes for the convection-enhanced neutrino-driven paradigm based on current (2012) knowledge of SNe and gamma-ray burst explosions.

- BUT Envelope stripping in binary stars \rightarrow significant reduction in BH numbers \rightarrow BH-NS, BH-BH merger rates reduced significantly

(Schneider et al. 2021; Tauris et al. 2013, 2015, 2017, Breivik et al. 2020)

Figures from Fryer et al. 2012; See also Banerjee et al. 2019, Kamlah et al. 2021

Remnant masses – electron-capture SNe (ECSNe)

- ONe(Mg) WD reaches a critical mass $M = 1.38M^*$ → electron capture is triggered on Mg^{24} and Ne^{20} → WD undergoes collapse from sudden lack of electron pressure.
- Characteristic remnant mass in N-body simulations / (B)PS → $M_{NS} = 1.26M^*$ (Belczynsky et al. 2008)
- Characteristic natal kick velocity dispersion σ_{ECSNe} uncertain:

- $\sigma_{ECSNe} = 30.0 \text{ kms}^{-1}$ (Wang et al. 2016, DRAGON-I)
- $\sigma_{ECSNe} = 20.0 \text{ kms}^{-1}$ (Askar et al. 2017, Breivik et al. 2020)
- $\sigma_{ECSNe} = 15.0 \text{ kms}^{-1}$ (Giacobbo et al. 2018)
- $\sigma_{ECSNe} = 3.0 \text{ kms}^{-1}$ (Gessner & Janka 2018) → DRAGON-II, MOCCA Survey Database II
- ...

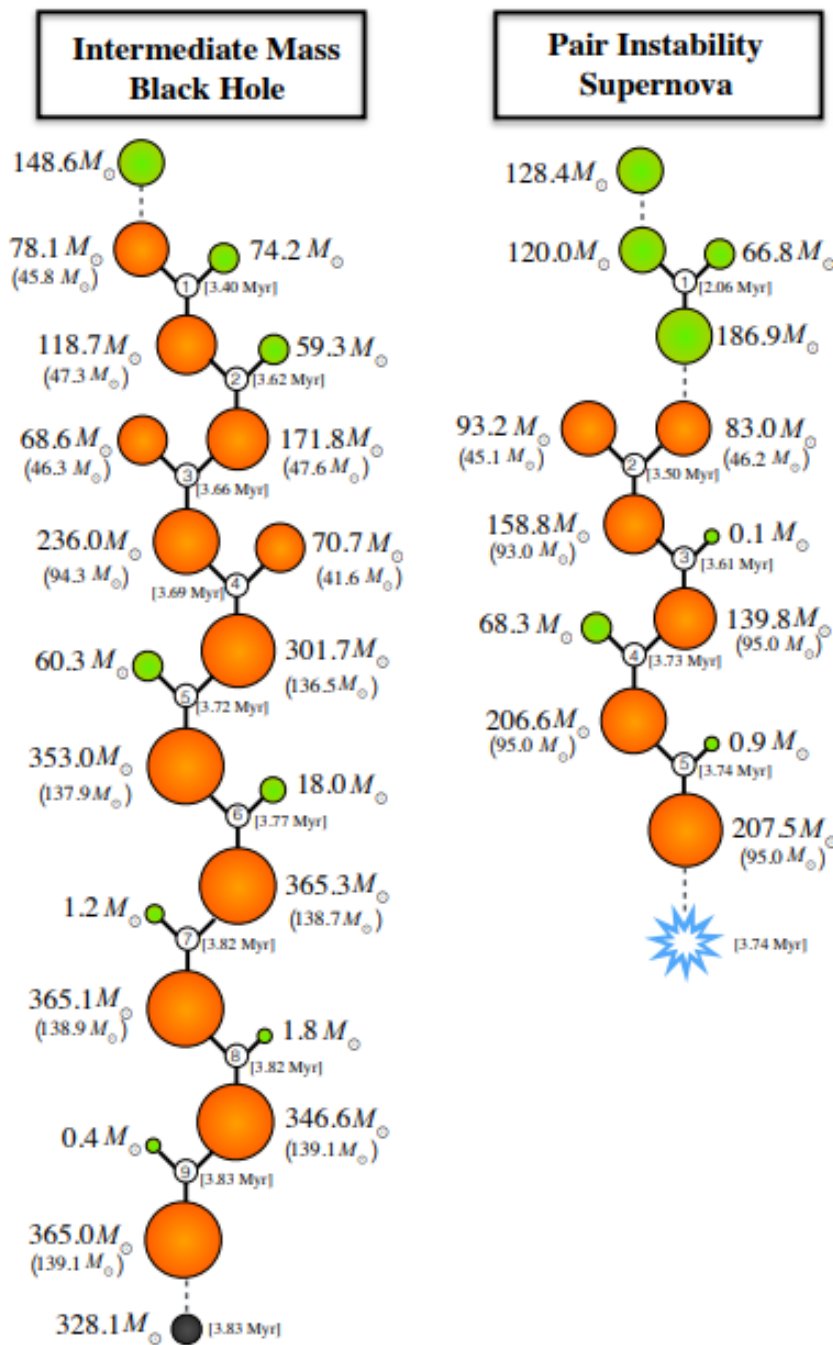
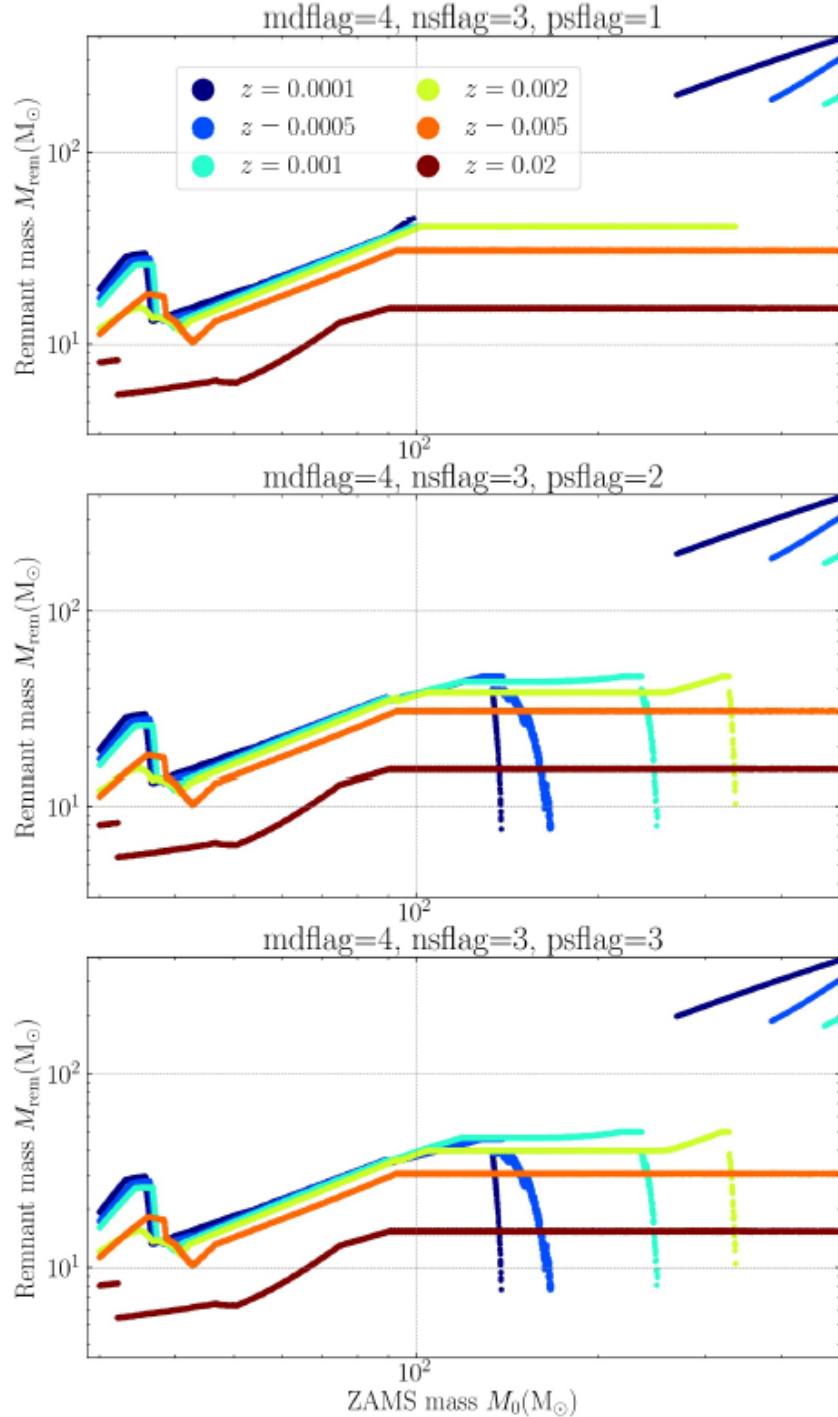
- Models typically include three possible pathways that can lead to an ECSNe (\equiv remnant masses & natal kicks modelled the same in the N-body codes) (Ivanova et al. 2008, Ye et al. 2019):

- Evolutionary-induced collapse (EIC)
- Accretion-induced collapse (AIC)
- Merger-induced collapse (MIC)

Remnant masses – EIC, AIC, MIC

- Evolutionary-induced collapse (EIC):
 - Single zero-age main-sequence (ZAMS) of mass $(6-8)M^*$ (metallicity dependent) (Nomoto 1984, 1987; Kiel et al. 2008)
 - Helium stars with masses between $(1.6-2.25)M^*$ (Hurley et al. 2000)
- Accretion-induced collapse (AIC) (Nomoto & Kondo 1991; Saio & Nomoto 2004):
 - ONe(Mg) WD accretes ONe or CO during RLOF → WD collapse if mass larger than ECSNe critical mass ($1.38M^*$) but smaller than maximum NS mass ($2.5M^*$ Wang et al. 2016).
- Merger-induced collapse (MIC) (Saio & Nomoto 1985):
 - Product of a merger or collision between two WDs (One(Mg) WDs or CO WDs)

→ All the above paths generally produce NSs in binaries, which can often lead to subsequent RLOF and the production of low-mass X-ray binaries (LMXBs; in GCs see Clark 1975) and millisecond pulsars (MSPs; in GCs see Manchester et al. 2005).



Remnant masses – (pulsational) pair instability SNe

- Theoretical modeling of massive stars predicts a gap in the black hole (BH) mass function above $\sim 40 - 50 M_{\odot}$ for BHs formed through single star evolution, arising from (pulsational) pair-instability supernovae \rightarrow in dense star clusters, dynamical channels may exist that allow construction of BHs with masses in excess of those allowed from single star evolution

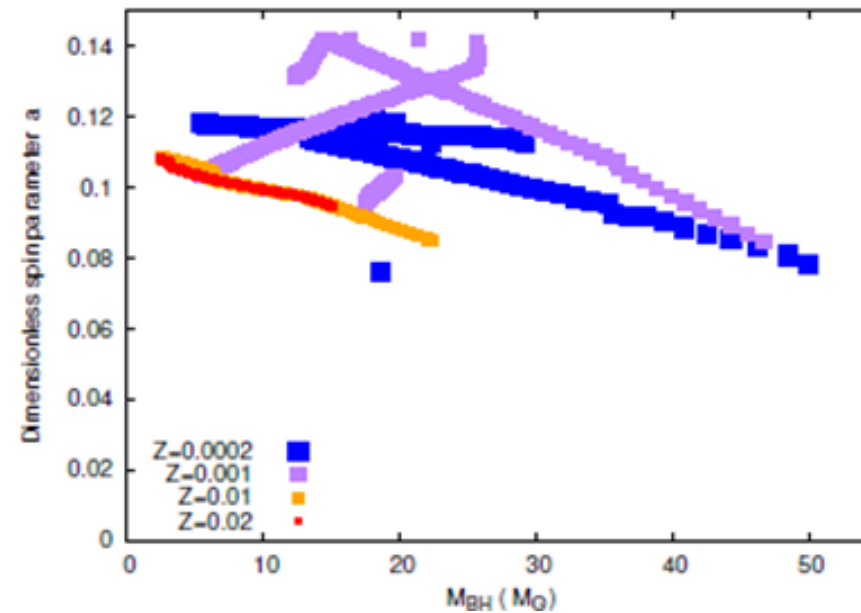
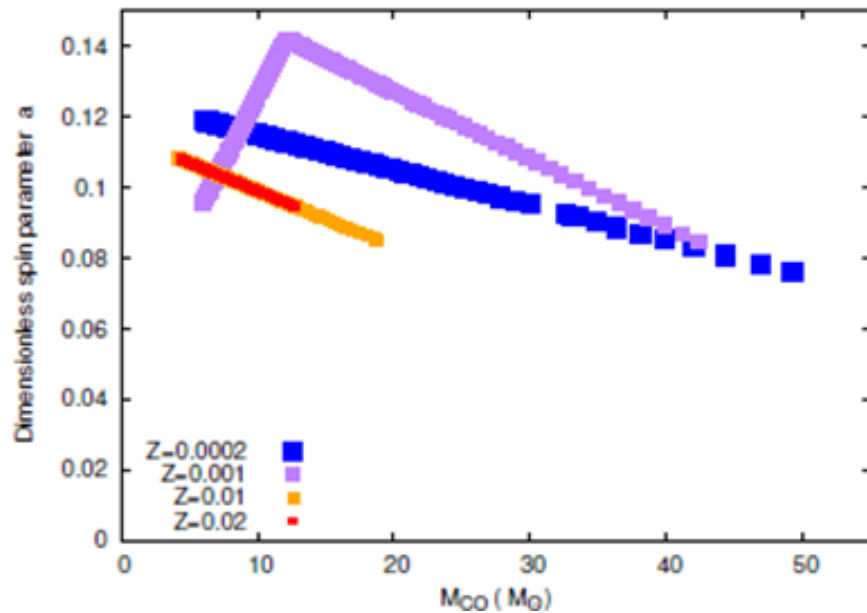
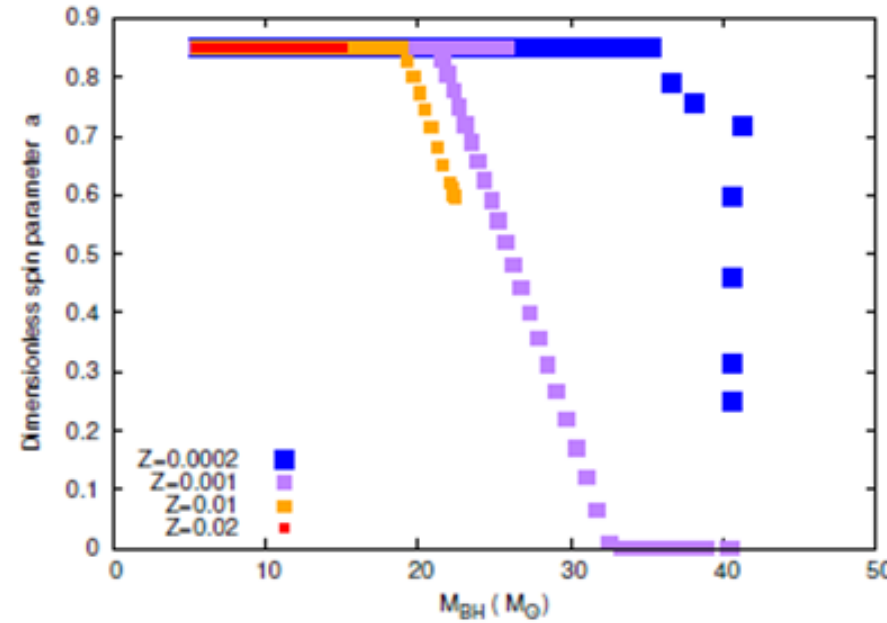
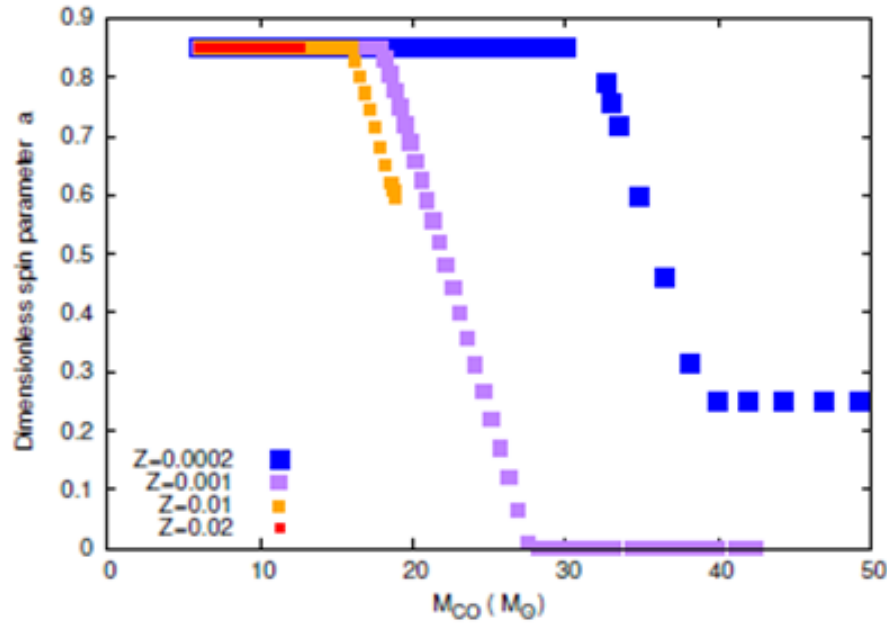
Figures: left: Kamlah et al. 2021 & right: Kremer et al. 2020; See also (Woosley 2017; Banerjee et al. 2020, Breivik et al. 2020, Wang et al. 2021).

BH natal spins

$$\vec{a} = \frac{c\vec{S}_{\text{BH}}}{GM_{\text{BH}}^2}.$$

BUT recent work claims that the Tayler-Spruit magnetic dynamo can essentially extract all of the angular momentum of the proto-remnant core, leading to nearly non-spinning BHs (Fuller et al. 2019)

Figures from Banerjee 2021; See also Belczynski & Banerjee 2020, Belczynski et al. 2020



Future additions (work in progress)

- Our **Level-D** code versions of **Nbody6++GPU** and **MOCCA** will be able to model (*later this year*):
 - Extremely metal-poor massive stars (Pop-III) up to 1280M* (Tanikawa et al. 2020, 2021, Hijikawa et al. 2021)
 - Cataclysmic variables around the orbital period gap (Rappaport et al. 1982, Ritter 2011, Belloni et al. 2018)
 - Pulsar spin evolution (Kiel et al. 2008, Kiel & Hurley 2009, Ye et al. 2019, Breivik et al. 2020)
 - General relativistic merger recoil velocities and merger product spins (e.g. Banerjee et al. 2021)
 - Wind velocity factors (Belczynski et al. 2008, Breivik et al. 2020, Belloni et al. 2021)
 - Updated magnetic braking (Rappaport et al. 1983, Belczynski et al. 2008, Belloni et al. 2018, 2019, 2020a)
 - Ultra-stripping in binary stars (Tauris et al. 2013, 2015, 2017, Breivik et al. 2020, Schneider et al. 2021)
 - Masses of merger products (Hillier et al. 2001, Barniske et al. 2008, Bestenlehner et al. 2020, Olejak et al. 2020)

Summary: Further SSE/BSE updates

(Level D in Kamlah et al. 2021)

	Nbody6++GPU	MOCCA
BSE extension to 1280 M* (Tanikawa et al. 2020, 2021, Hijikawa et al. 2021)	No	Yes
Cataclysmic variables around the orbital period gap (Ritter 2011, Schreiber et al. 2016, Zorotovic, Belloni et al. 2018)	No	Yes
Pulsar spin evolution and magnetic field burying (Kiel 2008, Kiel & Hurley 2009, Ye et al. 2019, Breivik et al. 2020, Chattopadhyay et al. 2020a,b)	No	No
General relativistic merger recoils and spins (Morawski et al. 2018, Belczynski et al. 2020, Banerjee 2021)	No	Yes
Wind velocity/accretion factors (Belczynski et al. 2008, Breivik et al. 2020, Belloni et al. 2021)	No	No
Updated Magnetic braking (Rappaport et al. 1983, Belczynski et al. 2008, Belloni et al. 2018, 2019, 2020a)	No	No
Ultra-stripping in binary stars (Tauris et al. 2013, 2015, 2017, Breivik et al. 2020, Schneider et al. 2021)	No	No

Small commercial break

- Everything discussed today (and much more) in our paper:

Preparing the next gravitational million-body simulations: Evolution of single and binary stars in Nbody6++GPU, MOCCA and McLuster

A. Kamlah^{1*}, A. Leveque⁵, R. Spurzem^{1,2,3}, M. Arca Sedda¹,
A. Askar⁶, S. Banerjee^{7,8}, P. Berczik^{1,2,4}, M. Giersz⁵
J. Hurley^{9,14}, D. Belloni^{12,13}, L. Kühmichel¹ and L. Wang^{10,11}

¹*Astronomisches Rechen-Institut, Zentrum für Astronomie, University of Heidelberg, Mönchhofstrasse 12-14, 69120, Heidelberg, Germany*

²*National Astronomical Observatories and Key Laboratory of Computational Astrophysics, Chinese Academy of Sciences,*

³*Kavli Institute for Astronomy and Astrophysics, Peking University, Yiheyuan Lu 5, Haidian Qu, 100871, Beijing, China
20A Datun Rd., Chaoyang District, 100012, Beijing, China*

⁴*Main Astronomical Observatory, National Academy of Sciences of Ukraine, 27 Akademika Zabolotnoho St., 03680, Kyiv, Ukraine*

⁵*Nicolaus Copernicus Astronomical Centre, Polish Academy of Sciences, ul. Bartycka 18, 00-716 Warsaw, Poland*

⁶*Lund Observatory, Department of Astronomy and Theoretical Physics, Lund University, Box 43, SE-221 00 Lund, Sweden*

⁷*Helmholtz-Institut für Strahlen- und Kernphysik (HISKP), Nussallee 14-16, D-53115 Bonn, Germany*

⁸*Argelander-Institut für Astronomie (AlfA), Auf dem Hügel 71, D-53121, Bonn, Germany*

⁹*Centre for Astrophysics and Supercomputing, Swinburne University of Technology, Hawthorn VIC 3122, Australia*

¹⁰*Department of Astronomy, School of Science, The University of Tokyo, 7-3-1 Hongo, Bunkyo-ku, Tokyo, 113-0033, Japan*

¹¹*RIKEN Center for Computational Science, 7-1-26 Minatojima-minami-machi, Chuo-ku, Kobe, Hyogo 650-0047, Japan*

¹²*National Institute for Space Research, Av. dos Astronautas, 1758, 12227-010, Sao Jose dos Campos, SP, Brazil*

¹³*Instituto de Física y Astronomía, Universidad de Valparaíso, Av. Gran Bretaña 1111 Valparaíso, Chile*

¹⁴*The ARC Centre of Excellence for Gravitational Wave Discovery - OzGrav-Swinburne University of Technology, VIC 3122, Australia*

Summary – SSE/BSE in N-body simulations

- Our **Level-C** code versions of **Nbody6++GPU** and **MOCCA** are able to model:
 - Metallicity dependent stellar wind mass loss (e.g. Vink et al. 2001, Vink & de Koter 2005, Belczynski et al. 2010)
 - Rapid and delayed core-collapse SNe (e.g. Fryer et al. 2012, Banerjee et al. 2019, Kamlah et al. 2021)
 - ECSNe (EIC, AIC, MIC) (e.g. Nomoto 1984, 1987, Nomoto & Saio 1985, Saio & Nomoto 2004, Ivanova 2008, Leung et al. 2020)
 - (P)PISNe (Belczynski et al. 2016, Spera & Mapelli 2017, Woosley 2017, Leung et al. 2019, Banerjee et al. 2020, Kremer et al. 2020, Kamlah et al. 2021)
 - Fallback-scaled natal kicks (e.g. Scheck et al. 2004, Fryer & Young 2007; Scheck et al. 2008, Banerjee et al. 2020, Banerjee 2021)
 - BH natal spins:
 - Fuller (e.g. Fuller & Ma 2019, Banerjee 2021)
 - Geneva (Eggenberger et al. 2008, Ekström et al. 2012, Banerjee 2021)
 - MESA (Spruit 2002, Paxton et al. 2011, 2015, Fuller & Ma 2019, Banerjee 2021)

- Our **Level-D** code versions of **Nbody6++GPU** and **MOCCA** will be able to model (*later this year*):
 - Extremely metal-poor massive stars (Pop-III) up to 1280M* (e.g. Tanikawa et al. 2020, 2021, Hijikawa et al. 2021)
 - Cataclysmic variables around the orbital period gap (e.g. Rappaport et al. 1982, Ritter 2011, Belloni et al. 2018)
 - Pulsar spin evolution (e.g. Kiel et al. 2008, Kiel & Hurley 2009, Ye et al. 2019, Breivik et al. 2020)
 - General relativistic merger recoil velocities/product spins (e.g. Rezzolla et al. 2008, Belczynski et al. 2020, Banerjee 2021)
 - Wind velocity factors (e.g. Belczynski et al. 2008, Breivik et al. 2020, Belloni et al. 2021)
 - Updated magnetic braking (e.g. Rappaport et al. 1983, Belczynski et al. 2008, Belloni et al. 2018, 2019, 2020a)
 - Ultra-stripping in binary stars (e.g. Tauris et al. 2013, 2015, 2017, Breivik et al. 2020, Schneider et al. 2021)
 - Masses of merger products (e.g. Hillier et al. 2001, Barniske et al. 2008, Bestenlehner et al. 2020, Olejak et al. 2020)

Please, if you any, send me literature on any new progress in the field of stellar winds, remnant masses, stellar mixing, stellar spins, binary evolution, ... to albrecht.kamlah@stud.uni-heidelberg.de Thank you so much in advance!

Summary

- Updates in the stellar evolution of Nbody6++GPU and MOCCA make it possible to study the evolution of LIGO/VIRGO GW source progenitor stars and sources themselves according to our best current understanding in our simulations.
- Likewise, these additions in McLuster make it possible to model accurately star cluster initial conditions with multiple stellar populations.
- The following state-of-the-art studies with the updated codes are in progress:
 - DRAGON-II of NGC 3201 (Spurzem et al.)
 - DRAGON-II IMBH growth studies (Arca Sedda et al.)
 - MOCCA Survey Database II (Giersz et al.)
- Many further and important updates are work in progress and are to be completed this year. With these updates we will also start to model 47 Tuc and Omega Cen.

Abbott B. P. et al. (LIGO Scientific Collaboration and Virgo Collaboration) (2016), *Phys. Rev. Lett.* 116, 061102

Abbott B. P. et al. (LIGO Scientific Collaboration and Virgo Collaboration) (2017), *Phys. Rev. Lett.* 119, 161101

Abbott B. P. et al. (LIGO Scientific Collaboration and Virgo Collaboration) (2018), *Living Rev. Relativ.* 21, 3

Abbott B. P. et al. (LIGO Scientific Collaboration and Virgo Collaboration) (2019), *Phys. Rev. X* 9, 031040

Abbott B. P. et al. (LIGO Scientific Collaboration and Virgo Collaboration) (2020a), *Phys. Rev. Lett.* 125, 101102

Abbott B. P. et al. (LIGO Scientific Collaboration and Virgo Collaboration) (2020b), *ApJL*, 892, L3

Askar A., Szkudlarek M., Gondek-Rosinska D. et al. (2017), *MNRAS*, 464, L36

Askar A., Arca Sedda M., Giersz M., (2018), *MNRAS*, 478, 1844

Baker J. G., Boggs W. D., Centrella J. et al. (2007), *ApJ*, 668, 1140

Baker J. G., Boggs W. D., Centrella J. et al. (2008), *ApJ*, 682, L29

Banerjee S. (2018), *MNRAS*, 473, 909

Banerjee S., Belczynski, K., Fryer C. L. et al. (2020), *A&A*, 639, A41

Banerjee S. (2021), *MNRAS*, 500, 3002

Baumgardt H. & Hilker M. (2018), *MNRAS*, 478, 1520

Belczynski K., Kalogera V. & Bulik T. (2002), *ApJ*, 572, 407

Belczynski K., Kalogera V. & Rasio F. A. (2008), *ApJSS*, 174, 223

Belczynski K., Bulik T., Fryer C. L. et al. (2010), *ApJ*, 714, 1217

Belczynski K., Heger A., Gladysz W. (2016), *A&A*, 594, A97

Belczynski K., Klencki J., Fields C. E. (2020), *A&A*, 636, A104

Belczynski K. & Banerjee S. (2020), *A&A*, 640, L20

Belloni D., Zorotovic M., Schreiber M. R. et al. (2017a), *MNRAS*, 468, 2429

Belloni D., Askar A., Giersz M. et al. (2017b), *MNRAS*, 471, 2812

Belloni D., Schreiber M. R., Zorotovic M. et al. (2018), *MNRAS*, 478, 5626

Belloni D., Giersz M., Rivera Sandoval L. E. et al. (2019), *MNRAS*, 483, 315

Belloni D., Schreiber M. R., Pala A. F. et al. (2020a), *MNRAS*, 491, 5717

Belloni D., Mikołajewska J., Iłkiewicz K. et al. (2020b), *MNRAS*, 496, 3436

Benacquista M. J. & Downing J. M. B. (2013), *Living Rev. Relativity*, 16, 4

Bestenlehner J. M., Crowther P. A., Caballero-Nieves S. M. et al. (2020), 499, 1918

Bianchini P., van der Marel R. P., del Pino A. et al. (2018), *MNRAS*, 481, 2125

Bianchini P., Ibata R. & Famaey B. (2019), *ApJL*, 887, 7

Chattopadhyay D., Stevenson S., Hurley J. R. et al. (2020a), *MNRAS*, 494, 1587

Chattopadhyay D., Stevenson S., Hurley J. R. et al. (2020b), eprint arXiv:2011.13503

Dewi J. D. M. & Tauris T. M. (2000), *A&A*, 360, 1043

Di Carlo U. N., Mapelli M., Bouffanais Y. et al. 2020, *MNRAS*, 497, 1043

Downing, J. M. B., Benacquista M. J., Giersz M. & Spurzem, R. (2010), *MNRAS*, 407, 1946

Downing, J. M. B., Benacquista M. J., Giersz M. & Spurzem, R. (2011), *MNRAS*, 416, 133

Eggenberger P., Meynet G., Maeder A. et al. (2008), *Astrophys Space Sc* 316, 43

Einsele C. & Spurzem R. (1999), *MNRAS*, 302, 81

Ekström S., Georgy C., Eggenberger P. et al. (2012), *A&A*, 537, A146, 18

Fregeau J. M., Cheung P., Zwart P. S. F. et al. (2004), *MNRAS*, 352, 1

Fryer C. & Kalogera V. (1997), *ApJ*, 489, 244

Fryer C. L. (2004), *ApJ*, 601, L175

Fryer C. L. & Kusenko A. (2006), *ApJS*, 163, 335

Fryer C. L. & Young P. A. (2007), *ApJ*, 659, 1438

Fryer C. L., Belczynski K., Wiktorowicz G. et al. (2012), *ApJ*, 749, 1

Fukushige T. & Heggie D. C. (2000), *MNRAS*, 318, 753

Fuller G. M., Kusenko A., Mocioiu I. & Pascoli S. (2003), *Phys. Rev. D*, 68, 103002

Fuller J., Piro A. L., Jermyn A. S. (2019), *MNRAS*, 485, 3661

Fuller J. & Ma L. (2019), *ApJL*, 881, L1

Gessner A. & Janka H. T. (2018), *ApJ*, 865, 20

Giacobbo N., Mappelli M., Spera M. et al. (2018), *MNRAS*, 474, 2959

Giersz M. & Spurzem R. (1994), *MNRAS* 269, 241

Giersz M. (1998), *MNRAS*, 298, 1239

Giersz M. (2001), *MNRAS*, 324, 218

Giersz M., Heggie D. & Hurley J. R. (2008), *MNRAS*, 388, 429

Giersz M. & Heggie D. (2009), *MNRAS*, 395, 1173

Giersz M., Heggie D. C., Hurley J. R. & Hypki A. (2013), *MNRAS* 431, 2184

Giersz M., Leigh N., Hypki A. et al. (2015), *MNRAS*, 454, 3150

Giersz M., Leigh N., Hypki A. et al. (2016), *MMSAI*, 87, 555

Giesers B., Dreizler S., Husser T.-O. et al. (2018), *MNRAS*, 475, L15

Giesers B., Kamann S., Dreizler S. et al. (2019), *A&A*, manuscript

Hénon M. H., (1971), *Ap&SS*, 14, 151

Hillier D. J., Davidson K., Ishibashi K. & Gull T. (2001), *ApJ*, 553, 837

Hobbs G., Lorimer D. R., Lyne A. G. et al. (2005), *MNRAS*, 360, 974

Hong J., Kim E., Lee H. M. & Spurzem R. (2013), *MNRAS*, 430, 2960

Hurley J. R., Pols O. R., & Tout C. A. (2000), *MNRAS*, 315, 543

Hurley J. R., Tout C. A., Pols O. R. et al. (2002), *MNRAS*, 329, 897

Hurley J. R. & Shara M. M. (2003), *ApJ*, 589, 179

Hurley J. R., Pols O. R., Aarseth S. J. et al. (2005), *MNRAS*, 363, 293

Hurley J. R. (2008a), *LNP*, 760, 283

Hurley J. R. (2008b), *LNP*, 760, 321

Hurley J. R., Pols O. R., Tout C. A. (2013a), *ASCL*, ascl:1303.015

Hurley J. R., Tout C. A., Pols O. R., (2013b), *ASCL*, ascl:1303.014

Husser T.-O., Kamann S., Dreizler S. & Wendt M. (2016), *A&A*, 588, A148

Hypki A., Giersz M. (2013), *MNRAS*, 429, 1221

Sources

Ivanova N., Heinke C. O., Rasio F. A. et al. (2008), *MNRAS*, 386, 553

Ivanova N., Justham S., Chen X. et al. (2013), *A&A Review*, 59

Kamann S., Husser T. O., Dreizler S. et al. (2018), *MNRAS*, 480, 1689

Kamann S., Giesers B., Bastian N. et al. (2020), *A&A*, 635, A65

Kamlah A. et al. (2021), Manuscript in preparation.

Kiel P. D. & Hurley J. R. (2006), *MNRAS*, 369, 1152

Kiel P. D., Hurley J. R., Bailes M. & Murray J. R. (2008), *MNRAS*, 388, 393

Kremer K., Ye C. S., Chatterjee S. et al. (2018), *ApJL*, 855, L15

Kremer K., Ye C. S., Rui N. Z. et al. (2019), *ApJ*, 871, 38

Kremer K., Spera M., Becker D. et al. (2019), *ApJ*, 903, 45

Kuepper A. H. W., Maschberger T., Kroupa P., Baumgardt H. (2011), *MNRAS*, 417, 2300

Lada C. J. & Lada E. A. (2003), *ARA & A*, 41, 57

Leung S. C. & Nomoto K. (2018), *Publications of the Astronomical Society of Australia*, Volume 36, id. e006

Leung S. C., Nomoto K., Blinnikov S. (2019), *ApJ*, 887, 72

Leung S. C., Blinnikov S., Ishidoshiro Koji et al. (2020), *ApJ*, 889, 75

Leveque A., Giersz M. & Paolillo, M. (2021a), eprint arXiv:2006.05887

Leveque A. (2021b), Manuscript in preparation.

Manchester R. N., Hobbs G. B., Teoh A., & Hobbs M. (2005), *AJ*, 129, 1993

Mapelli M. (2020), *Front. Astron. Space Sci.*, 7, DOI:10.3389/fspas.2020.00038

Milone A. P., Piotto G., Bedin L. R. et al. (2011), *ApJ*, 744, 22

Milone A. P., Piotto G., Bedin L. R. et al. (2012), *A&A*, 540, 16

Moe M. & Di Stefano R. (2017), *ApJS*, 230, 15

Morawski J., Giersz M., Askar A. & Belczynski K. (2018), *MNRAS*, 481, 2168

Nitadori K. & Aarseth S. J. (2012), *MNRAS*, 424, 545

Nomoto K. (1984), *ApJ*, 277, 791

Nomoto K. (1987), *ApJ*, 322, 206

Nomoto K., & Kondo Y. (1991), *ApJL*, 367, L19

Olejak A., Belczynski K., Bulik T. & Sobolewska M. (2020), *A&A*, 901, L39

Panamarev T., Just A., Spurzem R. et al. (2019), *MNRAS*, 484, 3, 3279

Peters P. C. & Mathews J. (1963), *Phys. Rev.*, 131, 435

Peters P. C. (1964), *Phys. Rev.* 136, B1224

Paxton B., Bildsten L., Dotter A. et al. (2011), *ApJS*, 192, 3, 35

Paxton B., Merchant P., Schwab J. et al. (2015), *ApJS*, 220, 15, 44

Rappaport S., Verbunt F. & Joss P. C. (1983), *ApJ*, 275, 713

Rantala A., Pihajoki P., Mannerkoski M. & Johansson P. H. (2020), *MNRAS*, 492, 4131

Rappaport S., Verbunt F. & Joss P. C. (1983), *ApJ*, 275, 713
 Rantala A., Pihajoki P., Mannerkoski M. & Johannson P. H. (2020), *MNRAS*, 492, 4131
 Reimers D. (1975), *Memoires of the Societe Royale des Sciences de Liege*, 8, 369
 Rezzolla L., Brausse E., Dorband E. N. et al. (2008), *Phys. Rev. D*, 78, 044002
 Ritter H. (1988), *A&A*, 202, 93
 Rizzuto F. P., Naab T., Spurzem R. et al. (2021), *MNRAS*, 501, 5257
 Saio H. & Nomoto K. (1985), *AA*, 150, L21
 Saio H. & Nomoto K. (2004), *ApJ*, 615, 444
 Scheck L., Plewa T., Janka H. T., Kifonidis K. & Müller E. (2004) *Phys. Rev. Lett.*, 92, 011103
 Scheck L., Janka H. T., Foglizzo T. & Kifonidis K. (2008), *A&A*, 477, 931
 Sigurdsson S. & Phinney E. S. (1993), *ApJ*, 415, 631
 Sigurdsson S. & Phinney E. S. (1995), *ApJS*, 99, 609
 Schneider F. R. N., Podsiadlowski Ph. & Müller B. (2021), *A&A*, 645, A5
 Schödel R., Feldmaier A., Kunneriath D. et al. (2014). *A&A*. 566. A47
 Schreiber M. R., Gänsicke B. T., Rebassa-Mansergas A. et al. (2010), *A&A*, 513, L7
 Schreiber M. R., Zorotovic M., Wijnen T. P. G. et al. (2016), *MNRAS*, 455, L16
 Schroeder & Cuntz (2005), *ApJ*, 630, L73
 Shu Q., Pang X., Flammini Dotti F. (2020), eprint arXiv:2011.14911
 Arca Sedda M., Askar A. & Giersz M. (2019), *MNRAS* (submitted), arXiv:1905.00902
 Arca Sedda M. (2020), *Commun. Phys.*, 3, A43
 Spruit H. C. (2002), *A&A*, 381, 923
 Spera M., Mapelli M. & Bressan A. (2015), *MNRAS*, 451, 4086
 Spera M. & Mapelli M. (2017), *MNRAS*, 470, 4730
 Spurzem R. (1999), *J. Comput. Appl. Math.*, 109, 407

Spurzem R., Berentzen I., Berczik P. et al. (2008), *Lect. Notes Phys.* 760, 377
 Stevenson S., Vigna-Gómez A., Mandel I. et al. (2017), *Nature Communications*, 8, 14906
 Stodolkiewicz J. S., 1982, *AcA*, 32, 63
 Stodolkiewicz J. S., 1986, *AcA*, 36, 19
 Tauris T. M., van den Heuvel E. P. J. & Savonije G. J. (2000), *ApJ*, 530, L93
 Tauris T. M., Langer N. & Kramer M. (2012), *MNRAS*, 425, 1601
 Tauris T. M., Langer N., Moriya T. J. et al. (2013), *ApJL*, 778, L23
 Tauris T. M., Langer N. & Podsiadlowski Ph. (2015), *MNRAS* 451, 2123
 Tauris T. M., Kramer M., Freire P. C. C. et al. (2017). *ApJ* 846. 170
 Tanikawa A., Yoshida T., Kinugawa T. et al. (2020), *MNRAS*, 495, 4170
 Tanikawa A., Susa H., Yoshida T. et al. (2021), *ApJ*, 910, 31
 van Meter J. R., Miller M. C., Baker J. G. et al. (2010), *ApJ*, 719, 1427
 Vassiliadis A. & Wood P. R. (1993), *ApJ*, 413, 641
 Vink S. J., de Koter A., Lamers H. J. G. L. M. (2001), *A&A*, 369, 574
 Vink S. J. & de Koter A. (2005), *A&A*, 442, 587
 Vink S. J., Muijres L. E., Anthonisse B. et al. (2011), *A&A*, 531, A132, 1
 Wang L., Spurzem R., Aarseth S. J. et al. (2015), *MNRAS*, 450, 4070
 Wang L., Spurzem R., Aarseth S. J. et al. (2016), *MNRAS*, 458, 1450
 Wang L., Iwasawa M., Nitadori K. & Makino J. (2020a), *ASCL*, record ascl:2007.005
 Wang L., Iwasawa M., Nitadori K. & Makino J. (2020b), *MNRAS*, 497, 536
 Weatherford N. C., Fragione G., Kremer K. et al. (2021), *ApJ*, 907, L25
 Woosley S. E. (2017), *ApJ*, 836, 244
 Ye C. S., Kremer K., Chatterjee S. et al. (2019), *ApJ*, 877, 122
 Zahn J. P. (1977) reprint (2009), *A&A* 500, 121
 Zick T. O., Weisz D. R. & Boylan-Kolchin M. (2018), *MNRAS*, 477, 480
 Zorotovic M., Schreiber M. R., Gänsicke B. T. & Nebot Gómez-Morán, A (2010), *A&A*, 520, A86
 Zorotovic M., Schreiber M. R. & Parsons S. G. (2016), *MNRAS*, 457, 3867

Below are some more sources
 That I forgot to put in the first
 iteration of the presentation...

Ballone A., Tornamenti S., Mapelli M. et al. (2021), *MNRAS* 501, 2920
 Breivik K., Coughlin S., Zevin M. et al. (2020), *ApJ*, 898, 71
 Drozda P., Belczynski K., O'Shaughnessy R. et al. 2020, eprint arXiv:2009.06655
 Einsele C. & Spurzem R. (1999), *MNRAS*, 302, 81
 Fiestas J. A., Spurzem R. & Kim E. (2006), *MNRAS*, 373, 677
 Giacobbo N., Mappelli M., Spera M. et al. (2018), *MNRAS*, 474, 2959
 Hamers A., Rantala A., Neunteufel P. et al. (2021), *MNRAS*, 502, 4479
 Hijikawa K., Tanikawa A., Kinugawa T. et al. (2021), eprint arXiv:2104.13384
 Hong J., Askar A., Giersz M. et al. (2020), *MNRAS*, 498, 4287
 Knigge (2006), *MNRAS*, 373, 484
 Knigge C., Baraffe I., Patterson J. (2011), *ApJS*, 194, 28
 Kruijssen JMD. 2014. *Classical and Quantum Gravity* 31:244006 1.1, 3.1.2
 Lahén N., Naab T., Johannson P. H. et al. (2020), *ApJ*, 904, 71
 Latour (2019), Latour M., Husser T.-O., Giesers B., Kamann S., et al., 2019, *A&A*, 631, A14
 Milone, A. P., Piotto, G., Bedin, L. R., et al. 2012, *A&A*, 540, A16
 Nardiello, D., Libralato, M., Piotto, G., et al. 2018, *MNRAS*, 481, 3382
 Olejak A., Belczynski K., Bulik T. & Sobolewska M. (2020), *A&A*, 901, L39
 Piotto, G., Milone, A. P., Bedin, L. R., et al. 2015, *AJ*, 149, 91
 Price-Whelan, A. M., Hogg, D. W., Foreman-Mackey, D., & Rix, H.-W. 2017, *ApJ*, 837, 20
 Price-Whelan, A. M., Hogg, D. W., Rix, H.-W., et al. 2018, *AJ*, 156, 18
 Ritter H. (1988), *A&A*, 202, 93
 Rodriguez C. L., Chatterjee S., Rasio F. A. (2016a), *PhRvD*, 93, 084029
 Rodriguez C. L., Haster C.-J., Chatterjee S. et al. (2016b). *ApJL*, 824, L8
 Ye C. S., Kremer K., Chatterjee S. et al. (2019), *ApJ*, 877, 122
 Wang L., Fujii M. S., Tanikawa A. (2021), *MNRAS*, Advance Access, eprint arXiv: arXiv:2101.09283